



# Full wwPDB X-ray Structure Validation Report ⓘ

Feb 1, 2016 – 04:51 AM GMT

PDB ID : 2OGI  
Title : Crystal structure of a putative metal dependent phosphohydrolase (sag1661) from streptococcus agalactiae serogroup v at 1.85 Å resolution  
Authors : Joint Center for Structural Genomics (JCSG)  
Deposited on : 2007-01-05  
Resolution : 1.85 Å(reported)

This is a Full wwPDB X-ray Structure Validation Report for a publicly released PDB entry.  
We welcome your comments at [validation@mail.wwpdb.org](mailto:validation@mail.wwpdb.org)  
A user guide is available at  
<http://wwpdb.org/validation/2016/XrayValidationReportHelp>  
with specific help available everywhere you see the ⓘ symbol.

---

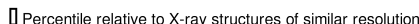
The following versions of software and data (see [references ⓘ](#)) were used in the production of this report:

MolProbity : 4.02b-467  
Mogul : 1.7 (RC4), CSD as536be (2015)  
Xtriage (Phenix) : 1.9-1692  
EDS : rb-20026688  
Percentile statistics : 20151230.v01 (using entries in the PDB archive December 30th 2015)  
Refmac : 5.8.0135  
CCP4 : 6.5.0  
Ideal geometry (proteins) : Engh & Huber (2001)  
Ideal geometry (DNA, RNA) : Parkinson et al. (1996)  
Validation Pipeline (wwPDB-VP) : trunk26865

**i**

## X-RAY DIFFRACTION

Percentile scores (ranging between 0-100) for global validation metrics of the entry are shown in the following graphic. The table shows the number of entries on which the scores are based.



Similar resolution  
(#Entries, resolution range(Å))

Quality of chain

## 2 Entry composition

There are 6 unique types of molecules in this entry. The entry contains 3472 atoms, of which 0 are hydrogens and 0 are deuteriums.

In the tables below, the ZeroOcc column contains the number of atoms modelled with zero occupancy, the AltConf column contains the number of residues with at least one atom in alternate conformation and the Trace column contains the number of residues modelled with at most 2 atoms.

- Molecule 1 is a protein called Hypothetical protein SAG1661.

Mol	Chain	Residues	Atoms					ZeroOcc	AltConf	Trace
1	A	193	Total	C	N	O	Se	0	3	0
			1557	1003	260	291	3			
1	B	195	Total	C	N	O	Se	0	2	1
			1568	1006	262	296	4			

There are 10 discrepancies between the modelled and reference sequences:

Chain	Residue	Modelled	Actual	Comment	Reference
A	0	GLY	-	LEADER SEQUENCE	UNP Q8DY32
A	1	MSE	MET	MODIFIED RESIDUE	UNP Q8DY32
A	21	MSE	MET	MODIFIED RESIDUE	UNP Q8DY32
A	22	MSE	MET	MODIFIED RESIDUE	UNP Q8DY32
A	124	MSE	MET	MODIFIED RESIDUE	UNP Q8DY32
B	0	GLY	-	LEADER SEQUENCE	UNP Q8DY32
B	1	MSE	MET	MODIFIED RESIDUE	UNP Q8DY32
B	21	MSE	MET	MODIFIED RESIDUE	UNP Q8DY32
B	22	MSE	MET	MODIFIED RESIDUE	UNP Q8DY32
B	124	MSE	MET	MODIFIED RESIDUE	UNP Q8DY32

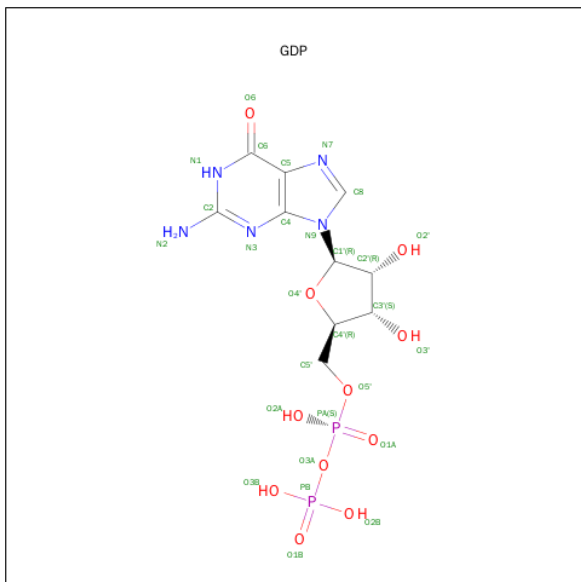
- Molecule 2 is FE (III) ION (three-letter code: FE) (formula: Fe).

Mol	Chain	Residues	Atoms		ZeroOcc	AltConf
2	B	2	Total	Fe	0	0
			2	2		
2	A	2	Total	Fe	0	0
			2	2		

- Molecule 3 is CHLORIDE ION (three-letter code: CL) (formula: Cl).

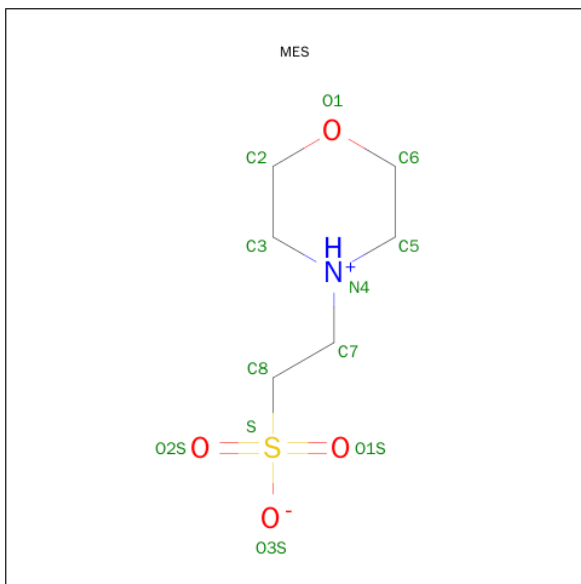
Mol	Chain	Residues	Atoms		ZeroOcc	AltConf
3	A	3	Total	Cl	0	0
			3	3		

- Molecule 4 is GUANOSINE-5'-DIPHOSPHATE (three-letter code: GDP) (formula:  $C_{10}H_{15}N_5O_{11}P_2$ ).



Mol	Chain	Residues	Atoms					ZeroOcc	AltConf
4	A	1	Total	C	N	O	P	0	0
			28	10	5	11	2		
4	B	1	Total	C	N	O	P	0	0
			28	10	5	11	2		

- Molecule 5 is 2-(N-MORPHOLINO)-ETHANESULFONIC ACID (three-letter code: MES) (formula:  $C_6H_{13}NO_4S$ ).



Mol	Chain	Residues	Atoms					ZeroOcc	AltConf
5	B	1	Total	C	N	O	S	0	0
			12	6	1	4	1		

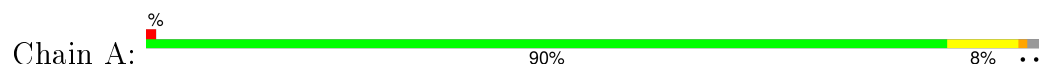
- Molecule 6 is water.

Mol	Chain	Residues	Atoms		ZeroOcc	AltConf
6	A	127	Total	O	0	0
			127	127		
6	B	145	Total	O	0	0
			145	145		

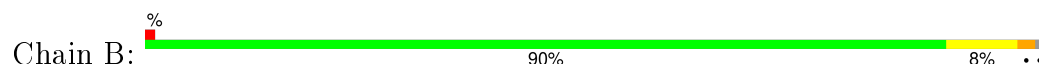
### 3 Residue-property plots [i](#)

These plots are drawn for all protein, RNA and DNA chains in the entry. The first graphic for a chain summarises the proportions of errors displayed in the second graphic. The second graphic shows the sequence view annotated by issues in geometry and electron density. Residues are color-coded according to the number of geometric quality criteria for which they contain at least one outlier: green = 0, yellow = 1, orange = 2 and red = 3 or more. A red dot above a residue indicates a poor fit to the electron density ( $\text{RSRZ} > 2$ ). Stretches of 2 or more consecutive residues without any outlier are shown as a green connector. Residues present in the sample, but not in the model, are shown in grey.

- Molecule 1: Hypothetical protein SAG1661



- Molecule 1: Hypothetical protein SAG1661



## 4 Data and refinement statistics

Property	Value	Source
Space group	P 1 21 1	Depositor
Cell constants a, b, c, $\alpha$ , $\beta$ , $\gamma$	65.84Å 52.53Å 70.02Å 90.00° 114.29° 90.00°	Depositor
Resolution (Å)	40.55 – 1.85 40.56 – 1.85	Depositor EDS
% Data completeness (in resolution range)	99.8 (40.55-1.85) 99.8 (40.56-1.85)	Depositor EDS
$R_{merge}$	0.07	Depositor
$R_{sym}$	(Not available)	Depositor
$\langle I/\sigma(I) \rangle$ <sup>1</sup>	1.79 (at 1.86Å)	Xtriage
Refinement program	REFMAC 5.2.0005	Depositor
R, $R_{free}$	0.172 , 0.229 0.180 , 0.234	Depositor DCC
$R_{free}$ test set	1865 reflections (5.25%)	DCC
Wilson B-factor (Å <sup>2</sup> )	24.9	Xtriage
Anisotropy	0.635	Xtriage
Bulk solvent $k_{sol}$ (e/Å <sup>3</sup> ), $B_{sol}$ (Å <sup>2</sup> )	0.36 , 50.7	EDS
Estimated twinning fraction	No twinning to report.	Xtriage
L-test for twinning <sup>2</sup>	$\langle  L  \rangle = 0.48$ , $\langle L^2 \rangle = 0.31$	Xtriage
Outliers	0 of 37390 reflections	Xtriage
$F_o, F_c$ correlation	0.96	EDS
Total number of atoms	3472	wwPDB-VP
Average B, all atoms (Å <sup>2</sup> )	32.0	wwPDB-VP

Xtriage's analysis on translational NCS is as follows: *The largest off-origin peak in the Patterson function is 6.79% of the height of the origin peak. No significant pseudotranslation is detected.*

<sup>1</sup>Intensities estimated from amplitudes.

<sup>2</sup>Theoretical values of  $\langle |L| \rangle$ ,  $\langle L^2 \rangle$  for acentric reflections are 0.5, 0.375 respectively for untwinned datasets, and 0.333, 0.2 for perfectly twinned datasets.

## 5 Model quality [i](#)

### 5.1 Standard geometry [i](#)

Bond lengths and bond angles in the following residue types are not validated in this section: GDP, FE, MES, CL

The Z score for a bond length (or angle) is the number of standard deviations the observed value is removed from the expected value. A bond length (or angle) with  $|Z| > 5$  is considered an outlier worth inspection. RMSZ is the root-mean-square of all Z scores of the bond lengths (or angles).

Mol	Chain	Bond lengths		Bond angles	
		RMSZ	$\# Z  > 5$	RMSZ	$\# Z  > 5$
1	A	0.76	0/1586	0.76	0/2143
1	B	0.80	1/1604 (0.1%)	0.78	1/2168 (0.0%)
All	All	0.78	1/3190 (0.0%)	0.77	1/4311 (0.0%)

All (1) bond length outliers are listed below:

Mol	Chain	Res	Type	Atoms	Z	Observed(Å)	Ideal(Å)
1	B	124	MSE	SE-CE	-5.14	1.65	1.95

All (1) bond angle outliers are listed below:

Mol	Chain	Res	Type	Atoms	Z	Observed(°)	Ideal(°)
1	B	47	ASP	CB-CG-OD1	5.08	122.87	118.30

There are no chirality outliers.

There are no planarity outliers.

### 5.2 Too-close contacts [i](#)

In the following table, the Non-H and H(model) columns list the number of non-hydrogen atoms and hydrogen atoms in the chain respectively. The H(added) column lists the number of hydrogen atoms added and optimized by MolProbity. The Clashes column lists the number of clashes within the asymmetric unit, whereas Symm-Clashes lists symmetry related clashes.

Mol	Chain	Non-H	H(model)	H(added)	Clashes	Symm-Clashes
1	A	1557	0	1529	13	0
1	B	1568	0	1548	12	0
2	A	2	0	0	0	0
2	B	2	0	0	0	0

*Continued on next page...*



*Continued from previous page...*

Mol	Chain	Non-H	H(model)	H(added)	Clashes	Symm-Clashes
3	A	3	0	0	1	0
4	A	28	0	12	1	0
4	B	28	0	12	0	0
5	B	12	0	12	1	0
6	A	127	0	0	1	0
6	B	145	0	0	3	0
All	All	3472	0	3113	25	0

The all-atom clashscore is defined as the number of clashes found per 1000 atoms (including hydrogen atoms). The all-atom clashscore for this structure is 4.

All (25) close contacts within the same asymmetric unit are listed below, sorted by their clash magnitude.

Atom-1	Atom-2	Interatomic distance (Å)	Clash overlap (Å)
1:B:22:MSE:CE	1:B:22:MSE:SE	2.20	1.39
1:A:122[B]:ALA:O	1:A:123[B]:GLN:HG2	1.85	0.75
4:A:400:GDP:O3'	6:A:515:HOH:O	2.09	0.69
1:A:26:ARG:HD3	1:A:62:LYS:HG2	1.75	0.68
1:A:7:THR:HG22	1:A:105[A]:ILE:HD11	1.84	0.60
1:A:26:ARG:CD	1:A:62:LYS:HG2	2.33	0.58
1:B:122:ALA:HB2	1:B:185[B]:GLU:HG3	1.86	0.57
1:B:49:GLU:OE1	5:B:401:MES:H82	2.05	0.56
1:B:122:ALA:HB2	1:B:185[B]:GLU:CG	2.36	0.56
1:A:184:ILE:HG13	1:B:184:ILE:HG13	1.88	0.55
1:B:33:VAL:HG12	1:B:55:ALA:HB1	1.90	0.53
1:B:91:HIS:O	1:B:95:GLY:HA3	2.11	0.50
1:A:33:VAL:HG12	1:A:55:ALA:HB1	1.92	0.50
1:B:177:GLN:HG3	6:B:497:HOH:O	2.13	0.48
1:A:71:ARG:HG3	1:A:72:LEU:N	2.30	0.47
1:A:7:THR:HG22	1:A:105[A]:ILE:CD1	2.44	0.47
1:B:171:PHE:CE2	1:B:175:LYS:HE2	2.49	0.47
1:B:181:PRO:HB2	6:B:526:HOH:O	2.14	0.46
1:B:2:THR:HG23	1:B:5:ASP:H	1.82	0.44
1:A:139:HIS:HE1	3:A:305:CL:CL	2.38	0.44
1:B:1:MSE:HB2	6:B:507:HOH:O	2.19	0.42
1:A:143:PHE:CD1	1:A:143:PHE:C	2.93	0.42
1:A:121:SER:OG	1:A:122[A]:ALA:O	2.31	0.41
1:A:26:ARG:NE	1:A:63:GLU:OE2	2.44	0.40
1:A:91:HIS:O	1:A:95:GLY:HA3	2.21	0.40

There are no symmetry-related clashes.

## 5.3 Torsion angles

### 5.3.1 Protein backbone

In the following table, the Percentiles column shows the percent Ramachandran outliers of the chain as a percentile score with respect to all X-ray entries followed by that with respect to entries of similar resolution.

The Analysed column shows the number of residues for which the backbone conformation was analysed, and the total number of residues.

Mol	Chain	Analysed	Favoured	Allowed	Outliers	Percentiles	
1	A	194/196 (99%)	187 (96%)	7 (4%)	0	100	100
1	B	195/196 (100%)	188 (96%)	7 (4%)	0	100	100
All	All	389/392 (99%)	375 (96%)	14 (4%)	0	100	100

There are no Ramachandran outliers to report.

### 5.3.2 Protein sidechains

In the following table, the Percentiles column shows the percent sidechain outliers of the chain as a percentile score with respect to all X-ray entries followed by that with respect to entries of similar resolution.

The Analysed column shows the number of residues for which the sidechain conformation was analysed, and the total number of residues.

Mol	Chain	Analysed	Rotameric	Outliers	Percentiles	
1	A	155/160 (97%)	154 (99%)	1 (1%)	90	87
1	B	160/160 (100%)	156 (98%)	4 (2%)	55	37
All	All	315/320 (98%)	310 (98%)	5 (2%)	70	57

All (5) residues with a non-rotameric sidechain are listed below:

Mol	Chain	Res	Type
1	A	71	ARG
1	B	1	MSE
1	B	2	THR
1	B	26	ARG
1	B	175	LYS

Some sidechains can be flipped to improve hydrogen bonding and reduce clashes. There are no such sidechains identified.

### 5.3.3 RNA [i](#)

There are no RNA molecules in this entry.

## 5.4 Non-standard residues in protein, DNA, RNA chains [i](#)

There are no non-standard protein/DNA/RNA residues in this entry.

## 5.5 Carbohydrates [i](#)

There are no carbohydrates in this entry.

## 5.6 Ligand geometry [i](#)

Of 10 ligands modelled in this entry, 7 are monoatomic - leaving 3 for Mogul analysis.

In the following table, the Counts columns list the number of bonds (or angles) for which Mogul statistics could be retrieved, the number of bonds (or angles) that are observed in the model and the number of bonds (or angles) that are defined in the chemical component dictionary. The Link column lists molecule types, if any, to which the group is linked. The Z score for a bond length (or angle) is the number of standard deviations the observed value is removed from the expected value. A bond length (or angle) with  $|Z| > 2$  is considered an outlier worth inspection. RMSZ is the root-mean-square of all Z scores of the bond lengths (or angles).

Mol	Type	Chain	Res	Link	Bond lengths			Bond angles		
					Counts	RMSZ	# $ Z  > 2$	Counts	RMSZ	# $ Z  > 2$
4	GDP	A	400	2	23,30,30	1.45	4 (17%)	30,47,47	2.25	10 (33%)
4	GDP	B	400	2	23,30,30	1.03	2 (8%)	30,47,47	1.81	8 (26%)
5	MES	B	401	-	11,12,12	0.76	0	14,16,16	2.44	5 (35%)

In the following table, the Chirals column lists the number of chiral outliers, the number of chiral centers analysed, the number of these observed in the model and the number defined in the chemical component dictionary. Similar counts are reported in the Torsion and Rings columns. '-' means no outliers of that kind were identified.

Mol	Type	Chain	Res	Link	Chirals	Torsions	Rings
4	GDP	A	400	2	-	0/12/32/32	0/3/3/3
4	GDP	B	400	2	-	0/12/32/32	0/3/3/3
5	MES	B	401	-	-	0/6/14/14	0/1/1/1

All (6) bond length outliers are listed below:

Mol	Chain	Res	Type	Atoms	Z	Observed(Å)	Ideal(Å)
4	B	400	GDP	O4'-C1'	2.04	1.43	1.41
4	B	400	GDP	C5-C4	2.65	1.46	1.40
4	A	400	GDP	C2-N2	2.84	1.39	1.34
4	A	400	GDP	C6-N1	2.92	1.38	1.33
4	A	400	GDP	C5-C4	3.11	1.47	1.40
4	A	400	GDP	C6-C5	3.19	1.47	1.41

All (23) bond angle outliers are listed below:

Mol	Chain	Res	Type	Atoms	Z	Observed(°)	Ideal(°)
4	B	400	GDP	C1'-N9-C4	-4.64	119.94	126.94
4	A	400	GDP	C4'-O4'-C1'	-4.17	105.13	109.72
4	A	400	GDP	N3-C2-N1	-4.08	121.23	127.44
4	A	400	GDP	C6-C5-C4	-4.03	116.08	120.90
4	A	400	GDP	C5-C6-N1	-3.97	118.17	123.59
4	A	400	GDP	C1'-N9-C4	-3.97	120.96	126.94
4	B	400	GDP	C6-C5-C4	-3.50	116.72	120.90
4	B	400	GDP	C4'-O4'-C1'	-3.10	106.31	109.72
4	B	400	GDP	N3-C2-N1	-2.77	123.23	127.44
4	B	400	GDP	C5-C6-N1	-2.68	119.93	123.59
4	A	400	GDP	C2'-C1'-N9	-2.31	110.77	114.29
4	A	400	GDP	C4-C5-N7	-2.20	107.46	109.48
4	B	400	GDP	C2'-C1'-N9	-2.04	111.18	114.29
5	B	401	MES	O1S-S-C8	2.26	108.83	106.91
5	B	401	MES	C7-N4-C3	2.48	117.61	111.27
5	B	401	MES	C7-N4-C5	2.51	117.71	111.27
4	B	400	GDP	O4'-C1'-N9	2.79	113.95	108.10
5	B	401	MES	C2-C3-N4	2.97	114.62	110.12
4	A	400	GDP	O4'-C1'-N9	2.97	114.31	108.10
4	A	400	GDP	N2-C2-N1	3.06	122.27	117.20
4	B	400	GDP	C6-N1-C2	3.31	120.53	115.94
4	A	400	GDP	C6-N1-C2	4.80	122.61	115.94
5	B	401	MES	C5-N4-C3	7.28	124.67	108.90

There are no chirality outliers.

There are no torsion outliers.

There are no ring outliers.

2 monomers are involved in 2 short contacts:

Mol	Chain	Res	Type	Clashes	Symm-Clashes
4	A	400	GDP	1	0
5	B	401	MES	1	0

## 5.7 Other polymers

There are no such residues in this entry.

## 5.8 Polymer linkage issues

There are no chain breaks in this entry.

## 6 Fit of model and data [i](#)

### 6.1 Protein, DNA and RNA chains [i](#)

In the following table, the column labelled ‘#RSRZ> 2’ contains the number (and percentage) of RSRZ outliers, followed by percent RSRZ outliers for the chain as percentile scores relative to all X-ray entries and entries of similar resolution. The OWAB column contains the minimum, median, 95<sup>th</sup> percentile and maximum values of the occupancy-weighted average B-factor per residue. The column labelled ‘Q< 0.9’ lists the number of (and percentage) of residues with an average occupancy less than 0.9.

Mol	Chain	Analysed	<RSRZ>	#RSRZ>2	OWAB(Å <sup>2</sup> )	Q<0.9
1	A	190/196 (96%)	-0.18	1 (0%) 91 91	21, 30, 43, 55	0
1	B	191/196 (97%)	-0.06	2 (1%) 84 84	22, 29, 44, 57	0
All	All	381/392 (97%)	-0.12	3 (0%) 87 87	21, 30, 44, 57	0

All (3) RSRZ outliers are listed below:

Mol	Chain	Res	Type	RSRZ
1	B	8	GLY	3.4
1	B	2	THR	2.8
1	A	12	THR	2.5

### 6.2 Non-standard residues in protein, DNA, RNA chains [i](#)

There are no non-standard protein/DNA/RNA residues in this entry.

### 6.3 Carbohydrates [i](#)

There are no carbohydrates in this entry.

### 6.4 Ligands [i](#)

In the following table, the Atoms column lists the number of modelled atoms in the group and the number defined in the chemical component dictionary. LLDF column lists the quality of electron density of the group with respect to its neighbouring residues in protein, DNA or RNA chains. The B-factors column lists the minimum, median, 95<sup>th</sup> percentile and maximum values of B factors of atoms in the group. The column labelled ‘Q< 0.9’ lists the number of atoms with occupancy less than 0.9.

Mol	Type	Chain	Res	Atoms	RSCC	RSR	LLDF	B-factors( $\text{\AA}^2$ )	Q<0.9
4	GDP	A	400	28/28	0.97	0.12	1.71	25,32,42,44	0
5	MES	B	401	12/12	0.87	0.19	1.41	54,67,90,95	0
4	GDP	B	400	28/28	0.97	0.10	0.57	26,36,46,48	0
3	CL	A	303	1/1	0.71	0.11	-1.93	58,58,58,58	0
2	FE	A	301	1/1	1.00	0.03	-3.28	24,24,24,24	0
2	FE	B	302	1/1	0.99	0.03	-6.13	23,23,23,23	0
2	FE	B	301	1/1	0.99	0.02	-7.66	21,21,21,21	0
2	FE	A	302	1/1	1.00	0.02	-8.61	22,22,22,22	0
3	CL	A	304	1/1	0.90	0.11	-	62,62,62,62	0
3	CL	A	305	1/1	0.98	0.12	-	50,50,50,50	0

## 6.5 Other polymers [i](#)

There are no such residues in this entry.