



Full wwPDB X-ray Structure Validation Report ⓘ

Feb 1, 2016 – 04:55 AM GMT

PDB ID : 2OPP
Title : Crystal Structure of HIV-1 Reverse Transcriptase in Complex with GW420867X.
Authors : Ren, J.; Nichols, C.E.; Chamberlain, P.P.; Weaver, K.L.; Chan, S.J.H.; Kleim, J.; Stammers, D.K.
Deposited on : 2007-01-30
Resolution : 2.55 Å(reported)

This is a Full wwPDB X-ray Structure Validation Report for a publicly released PDB entry.
We welcome your comments at validation@mail.wwpdb.org
A user guide is available at
<http://wwpdb.org/validation/2016/XrayValidationReportHelp>
with specific help available everywhere you see the ⓘ symbol.

The following versions of software and data (see [references ⓘ](#)) were used in the production of this report:

MolProbity : 4.02b-467
Mogul : 1.7 (RC4), CSD as536be (2015)
Xtriage (Phenix) : 1.9-1692
EDS : rb-20026688
Percentile statistics : 20151230.v01 (using entries in the PDB archive December 30th 2015)
Refmac : 5.8.0135
CCP4 : 6.5.0
Ideal geometry (proteins) : Engh & Huber (2001)
Ideal geometry (DNA, RNA) : Parkinson et al. (1996)
Validation Pipeline (wwPDB-VP) : trunk26865

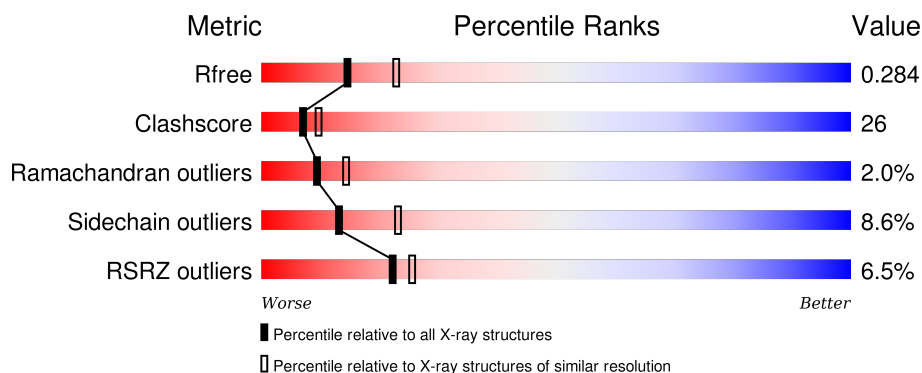
1 Overall quality at a glance

The following experimental techniques were used to determine the structure:

X-RAY DIFFRACTION

The reported resolution of this entry is 2.55 Å.

Percentile scores (ranging between 0-100) for global validation metrics of the entry are shown in the following graphic. The table shows the number of entries on which the scores are based.



Metric	Whole archive (#Entries)	Similar resolution (#Entries, resolution range(Å))
R_{free}	91344	4549 (2.58-2.50)
Clashscore	102246	5292 (2.58-2.50)
Ramachandran outliers	100387	5194 (2.58-2.50)
Sidechain outliers	100360	5196 (2.58-2.50)
RSRZ outliers	91569	4561 (2.58-2.50)

The table below summarises the geometric issues observed across the polymeric chains and their fit to the electron density. The red, orange, yellow and green segments on the lower bar indicate the fraction of residues that contain outliers for ≥ 3 , 2, 1 and 0 types of geometric quality criteria. A grey segment represents the fraction of residues that are not modelled. The numeric value for each fraction is indicated below the corresponding segment, with a dot representing fractions $\leq 5\%$. The upper red bar (where present) indicates the fraction of residues that have poor fit to the electron density. The numeric value is given above the bar.

Mol	Chain	Length	Quality of chain
1	A	542	<div> <div>4%</div> <div>47%</div> <div>42%</div> <div>6%</div> <div>• •</div> </div>
2	B	427	<div> <div>9%</div> <div>50%</div> <div>41%</div> <div>•</div> <div>6%</div> </div>

The following table lists non-polymeric compounds, carbohydrate monomers and non-standard residues in protein, DNA, RNA chains that are outliers for geometric or electron-density-fit criteria:

Mol	Type	Chain	Res	Chirality	Geometry	Clashes	Electron density
3	PO4	A	1300	-	-	-	X

2 Entry composition [i](#)

There are 6 unique types of molecules in this entry. The entry contains 7783 atoms, of which 0 are hydrogens and 0 are deuteriums.

In the tables below, the ZeroOcc column contains the number of atoms modelled with zero occupancy, the AltConf column contains the number of residues with at least one atom in alternate conformation and the Trace column contains the number of residues modelled with at most 2 atoms.

- Molecule 1 is a protein called Reverse transcriptase/ribonuclease H.

Mol	Chain	Residues	Atoms					ZeroOcc	AltConf	Trace
1	A	519	Total	C	N	O	S	0	0	0
			4261	2761	705	787	8			

There is a discrepancy between the modelled and reference sequences:

Chain	Residue	Modelled	Actual	Comment	Reference
A	280	CSD	CYS	MODIFIED RESIDUE	UNP P04585

- Molecule 2 is a protein called p51 RT.

Mol	Chain	Residues	Atoms					ZeroOcc	AltConf	Trace
2	B	403	Total	C	N	O	S	0	0	0
			3357	2191	552	608	6			

- Molecule 3 is PHOSPHATE ION (three-letter code: PO4) (formula: O₄P).

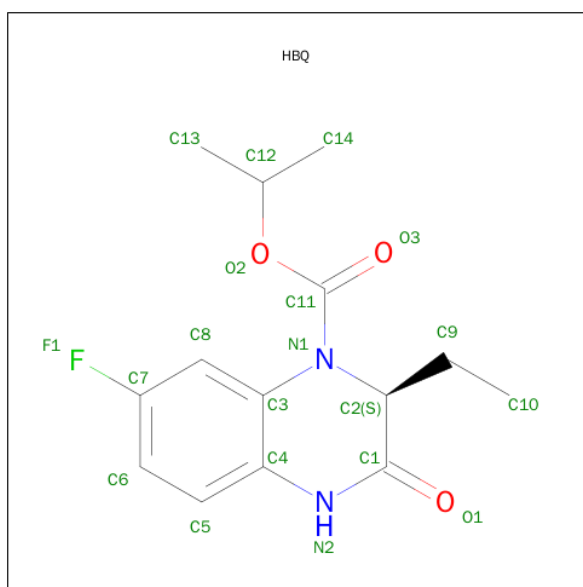


Mol	Chain	Residues	Atoms	ZeroOcc	AltConf
3	A	1	Total O P 5 4 1	0	0
3	A	1	Total O P 5 4 1	0	0
3	A	1	Total O P 5 4 1	0	0

- Molecule 4 is MAGNESIUM ION (three-letter code: MG) (formula: Mg).

Mol	Chain	Residues	Atoms	ZeroOcc	AltConf
4	A	1	Total Mg 1 1	0	0

- Molecule 5 is ISOPROPYL (2S)-2-ETHYL-7-FLUORO-3-OXO-3,4-DIHYDROQUINOXALINE-1(2H)-CARBOXYLATE (three-letter code: HBQ) (formula: C₁₄H₁₇FN₂O₃).



Mol	Chain	Residues	Atoms	ZeroOcc	AltConf
5	A	1	Total C F N O 20 14 1 2 3	0	0

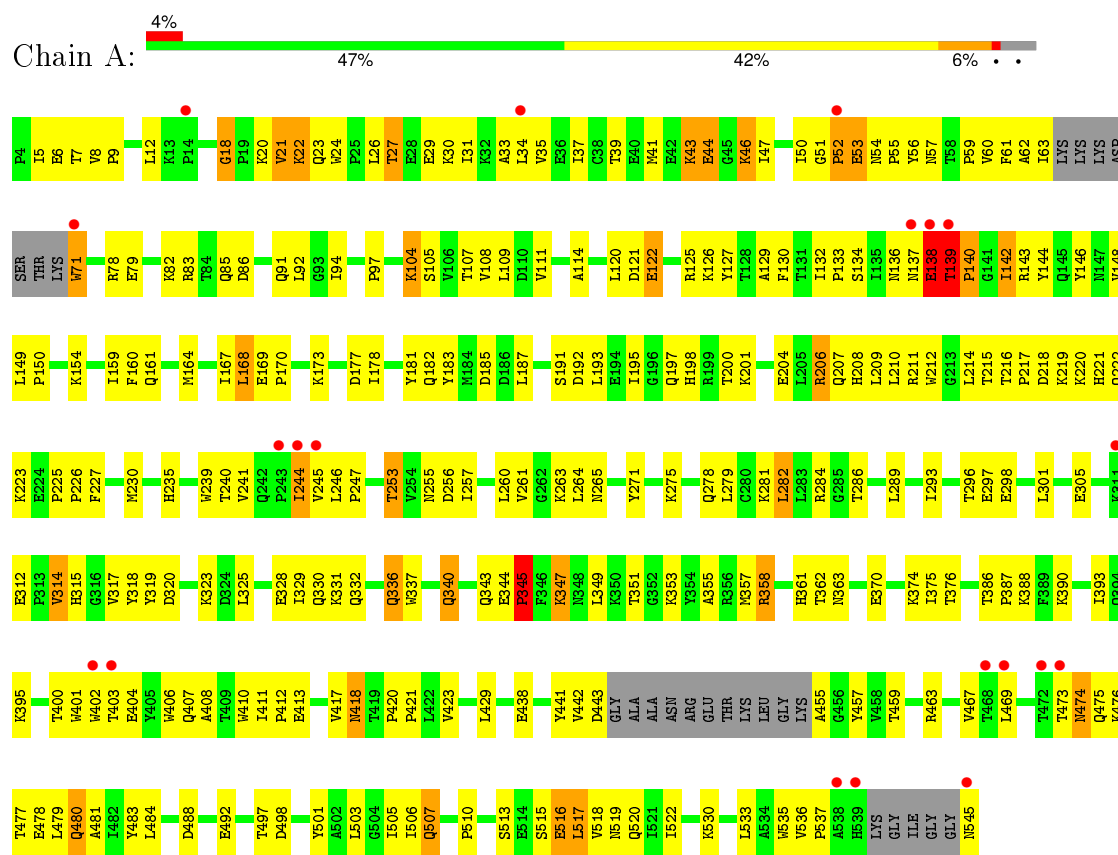
- Molecule 6 is water.

Mol	Chain	Residues	Atoms	ZeroOcc	AltConf
6	A	68	Total O 68 68	0	0
6	B	61	Total O 61 61	0	0

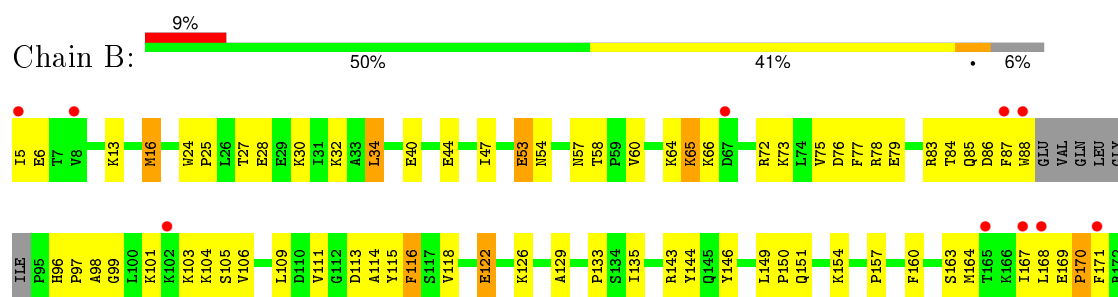
3 Residue-property plots

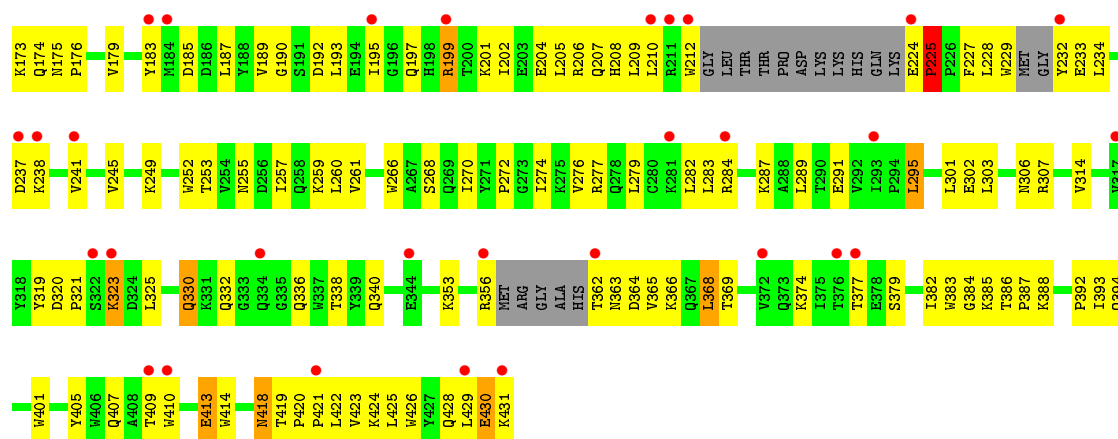
These plots are drawn for all protein, RNA and DNA chains in the entry. The first graphic for a chain summarises the proportions of errors displayed in the second graphic. The second graphic shows the sequence view annotated by issues in geometry and electron density. Residues are color-coded according to the number of geometric quality criteria for which they contain at least one outlier: green = 0, yellow = 1, orange = 2 and red = 3 or more. A red dot above a residue indicates a poor fit to the electron density ($RSRZ > 2$). Stretches of 2 or more consecutive residues without any outlier are shown as a green connector. Residues present in the sample, but not in the model, are shown in grey.

• Molecule 1: Reverse transcriptase/ribonuclease H



• Molecule 2: p51 RT





4 Data and refinement statistics

Property	Value	Source
Space group	P 21 21 21	Depositor
Cell constants a, b, c, α , β , γ	138.50 Å 115.30 Å 65.90 Å 90.00° 90.00° 90.00°	Depositor
Resolution (Å)	29.68 – 2.55 29.68 – 2.55	Depositor EDS
% Data completeness (in resolution range)	93.9 (29.68-2.55) 94.0 (29.68-2.55)	Depositor EDS
R_{merge}	0.05	Depositor
R_{sym}	(Not available)	Depositor
$\langle I/\sigma(I) \rangle$ ¹	2.28 (at 2.54 Å)	Xtriage
Refinement program	CNS 1.1	Depositor
R, R_{free}	0.205 , 0.295 0.201 , 0.284	Depositor DCC
R_{free} test set	1657 reflections (5.30%)	DCC
Wilson B-factor (Å ²)	52.9	Xtriage
Anisotropy	0.208	Xtriage
Bulk solvent k_{sol} (e/Å ³), B_{sol} (Å ²)	0.33 , 71.9	EDS
Estimated twinning fraction	No twinning to report.	Xtriage
L-test for twinning ²	$\langle L \rangle = 0.48$, $\langle L^2 \rangle = 0.31$	Xtriage
Outliers	0 of 32938 reflections	Xtriage
F_o, F_c correlation	0.94	EDS
Total number of atoms	7783	wwPDB-VP
Average B, all atoms (Å ²)	63.0	wwPDB-VP

Xtriage's analysis on translational NCS is as follows: *The largest off-origin peak in the Patterson function is 2.80% of the height of the origin peak. No significant pseudotranslation is detected.*

¹Intensities estimated from amplitudes.

²Theoretical values of $\langle |L| \rangle$, $\langle L^2 \rangle$ for acentric reflections are 0.5, 0.375 respectively for untwinned datasets, and 0.333, 0.2 for perfectly twinned datasets.

5 Model quality

5.1 Standard geometry

Bond lengths and bond angles in the following residue types are not validated in this section: CSD, PO4, HBQ, MG

The Z score for a bond length (or angle) is the number of standard deviations the observed value is removed from the expected value. A bond length (or angle) with $|Z| > 5$ is considered an outlier worth inspection. RMSZ is the root-mean-square of all Z scores of the bond lengths (or angles).

Mol	Chain	Bond lengths		Bond angles	
		RMSZ	$\# Z > 5$	RMSZ	$\# Z > 5$
1	A	0.49	0/4366	0.70	0/5937
2	B	0.50	0/3453	0.73	1/4688 (0.0%)
All	All	0.49	0/7819	0.71	1/10625 (0.0%)

There are no bond length outliers.

All (1) bond angle outliers are listed below:

Mol	Chain	Res	Type	Atoms	Z	Observed(°)	Ideal(°)
2	B	234	LEU	CA-CB-CG	5.57	128.11	115.30

There are no chirality outliers.

There are no planarity outliers.

5.2 Too-close contacts

In the following table, the Non-H and H(model) columns list the number of non-hydrogen atoms and hydrogen atoms in the chain respectively. The H(added) column lists the number of hydrogen atoms added and optimized by MolProbity. The Clashes column lists the number of clashes within the asymmetric unit, whereas Symm-Clashes lists symmetry related clashes.

Mol	Chain	Non-H	H(model)	H(added)	Clashes	Symm-Clashes
1	A	4261	0	4279	237	0
2	B	3357	0	3380	180	0
3	A	15	0	0	0	0
4	A	1	0	0	0	0
5	A	20	0	17	0	0
6	A	68	0	0	6	0
6	B	61	0	0	8	0
All	All	7783	0	7676	405	0

The all-atom clashscore is defined as the number of clashes found per 1000 atoms (including hydrogen atoms). The all-atom clashscore for this structure is 26.

All (405) close contacts within the same asymmetric unit are listed below, sorted by their clash magnitude.

Atom-1	Atom-2	Interatomic distance (Å)	Clash overlap (Å)
2:B:224:GLU:HB3	2:B:225:PRO:HD2	1.22	1.17
1:A:139:THR:HB	1:A:140:PRO:HD3	1.28	1.09
1:A:20:LYS:HE2	1:A:55:PRO:HB2	1.48	0.95
2:B:330:GLN:HE22	2:B:340:GLN:HE22	1.01	0.90
2:B:224:GLU:CB	2:B:225:PRO:HD2	2.03	0.89
2:B:428:GLN:HG3	2:B:429:LEU:H	1.36	0.89
1:A:22:LYS:HE3	1:A:22:LYS:HA	1.55	0.87
2:B:169:GLU:HB3	2:B:170:PRO:HD3	1.55	0.86
1:A:136:ASN:HD22	1:A:139:THR:HG23	1.41	0.85
2:B:65:LYS:HE3	2:B:66:LYS:H	1.43	0.84
1:A:46:LYS:H	1:A:46:LYS:HE2	1.42	0.83
1:A:139:THR:HB	1:A:140:PRO:CD	2.07	0.82
2:B:175:ASN:HD21	2:B:201:LYS:NZ	1.78	0.82
1:A:226:PRO:HG3	1:A:235:HIS:CE1	2.15	0.81
2:B:245:VAL:HG21	2:B:429:LEU:HD23	1.62	0.79
2:B:330:GLN:NE2	2:B:340:GLN:HE22	1.79	0.78
2:B:374:LYS:O	2:B:377:THR:HG22	1.82	0.78
1:A:91:GLN:HG3	1:A:92:LEU:H	1.46	0.78
1:A:114:ALA:HB1	1:A:160:PHE:CE2	2.18	0.78
2:B:224:GLU:HB3	2:B:225:PRO:CD	2.09	0.77
1:A:22:LYS:CE	1:A:23:GLN:H	1.97	0.77
1:A:39:THR:O	1:A:43:LYS:HE2	1.84	0.77
1:A:328:GLU:HG3	1:A:390:LYS:HB2	1.67	0.77
2:B:330:GLN:HE22	2:B:340:GLN:NE2	1.81	0.77
2:B:365:VAL:O	2:B:369:THR:HG23	1.86	0.76
2:B:261:VAL:HG13	2:B:276:VAL:HG11	1.66	0.76
1:A:376:THR:HG23	1:A:386:THR:HG22	1.68	0.76
1:A:474:ASN:O	1:A:477:THR:HG22	1.86	0.75
2:B:353:LYS:HZ1	2:B:429:LEU:HB2	1.52	0.74
1:A:480:GLN:HG2	1:A:517:LEU:HD11	1.69	0.74
1:A:286:THR:HG22	1:A:293:ILE:HD11	1.69	0.73
1:A:161:GLN:HA	1:A:182:GLN:HE22	1.53	0.73
2:B:422:LEU:HA	2:B:425:LEU:HD13	1.71	0.73
1:A:253:THR:HG22	1:A:256:ASP:H	1.54	0.72
1:A:22:LYS:HE2	1:A:23:GLN:H	1.53	0.72
2:B:332:GLN:HB3	2:B:428:GLN:NE2	2.03	0.72
1:A:393:ILE:HB	1:A:423:VAL:HG22	1.70	0.72

Continued on next page...

Continued from previous page...

Atom-1	Atom-2	Interatomic distance (Å)	Clash overlap (Å)
1:A:244:ILE:HD11	1:A:263:LYS:NZ	2.04	0.72
1:A:518:VAL:O	1:A:522:ILE:HG13	1.89	0.72
1:A:413:GLU:HA	6:A:1063:HOH:O	1.88	0.72
2:B:169:GLU:HG2	2:B:173:LYS:NZ	2.05	0.71
2:B:209:LEU:HD13	2:B:225:PRO:HG2	1.72	0.71
1:A:301:LEU:O	1:A:305:GLU:HG3	1.92	0.70
2:B:98:ALA:HB1	2:B:101:LYS:NZ	2.06	0.70
2:B:428:GLN:CG	2:B:429:LEU:H	2.03	0.69
2:B:237:ASP:OD1	2:B:238:LYS:HG2	1.92	0.69
1:A:91:GLN:HG3	1:A:92:LEU:N	2.07	0.69
1:A:8:VAL:CG1	2:B:53:GLU:HG3	2.22	0.69
1:A:139:THR:CB	1:A:140:PRO:HD3	2.15	0.69
2:B:66:LYS:HZ1	2:B:232:TYR:N	1.91	0.69
2:B:252:TRP:CD1	2:B:295:LEU:HD11	2.28	0.69
1:A:46:LYS:N	1:A:46:LYS:HE2	2.06	0.69
1:A:54:ASN:HD22	1:A:143:ARG:NH2	1.91	0.68
2:B:431:LYS:OXT	2:B:431:LYS:HG2	1.93	0.68
1:A:343:GLN:HG3	1:A:349:LEU:HD11	1.76	0.68
2:B:72:ARG:HE	2:B:409:THR:HG22	1.59	0.68
2:B:428:GLN:CG	2:B:429:LEU:N	2.57	0.68
1:A:104:LYS:HB2	1:A:192:ASP:HA	1.77	0.67
1:A:142:ILE:H	1:A:142:ILE:HD13	1.59	0.67
1:A:244:ILE:HG23	1:A:244:ILE:O	1.95	0.67
2:B:66:LYS:NZ	2:B:232:TYR:N	2.43	0.67
2:B:163:SER:O	2:B:167:ILE:HG13	1.94	0.67
2:B:428:GLN:HG3	2:B:429:LEU:N	2.10	0.66
1:A:136:ASN:C	1:A:138:GLU:H	1.98	0.66
1:A:181:TYR:CE1	1:A:183:TYR:HB2	2.31	0.65
2:B:353:LYS:NZ	2:B:429:LEU:HB2	2.11	0.65
1:A:197:GLN:HA	1:A:197:GLN:NE2	2.11	0.65
1:A:476:LYS:HG2	1:A:517:LEU:HD12	1.78	0.65
2:B:362:THR:HB	2:B:366:LYS:HD3	1.77	0.65
2:B:169:GLU:HG2	2:B:173:LYS:HZ2	1.59	0.65
2:B:295:LEU:HD12	2:B:295:LEU:N	2.11	0.64
2:B:224:GLU:CB	2:B:225:PRO:CD	2.73	0.64
1:A:218:ASP:HB2	1:A:221:HIS:ND1	2.13	0.64
2:B:365:VAL:HG11	2:B:401:TRP:HB2	1.80	0.64
1:A:376:THR:HG23	1:A:386:THR:CG2	2.27	0.64
2:B:103:LYS:HE3	2:B:179:VAL:CG2	2.28	0.64
2:B:5:ILE:HG23	2:B:6:GLU:H	1.62	0.64
1:A:122:GLU:HA	1:A:125:ARG:HD2	1.79	0.64

Continued on next page...

Continued from previous page...

Atom-1	Atom-2	Interatomic distance (Å)	Clash overlap (Å)
1:A:47:ILE:HD12	1:A:144:TYR:CD1	2.33	0.63
1:A:177:ASP:O	1:A:178:ILE:HD13	1.99	0.63
1:A:275:LYS:HE2	1:A:332:GLN:NE2	2.14	0.63
2:B:287:LYS:HB3	2:B:291:GLU:OE1	1.98	0.63
1:A:275:LYS:HE2	1:A:332:GLN:CD	2.19	0.62
2:B:98:ALA:HB1	2:B:101:LYS:HZ2	1.65	0.62
1:A:281:LYS:O	1:A:284:ARG:HG3	2.00	0.62
1:A:111:VAL:O	1:A:111:VAL:HG23	1.99	0.62
1:A:429:LEU:HD11	1:A:506:ILE:HG22	1.80	0.62
1:A:503:LEU:O	1:A:507:GLN:HB2	1.99	0.62
2:B:13:LYS:HB2	2:B:16:MET:HG3	1.82	0.62
1:A:393:ILE:HB	1:A:423:VAL:CG2	2.30	0.62
2:B:32:LYS:HD3	6:B:1084:HOH:O	1.99	0.61
1:A:136:ASN:O	1:A:138:GLU:N	2.34	0.61
1:A:206:ARG:HH21	1:A:217:PRO:C	2.04	0.61
1:A:177:ASP:OD2	1:A:193:LEU:HD21	2.00	0.61
2:B:255:ASN:HD21	2:B:259:LYS:HE2	1.64	0.61
2:B:199:ARG:HG2	2:B:199:ARG:HH11	1.65	0.61
1:A:27:THR:HG22	1:A:30:LYS:H	1.65	0.61
2:B:104:LYS:HB2	2:B:192:ASP:HA	1.82	0.61
2:B:332:GLN:HB3	2:B:428:GLN:HE22	1.66	0.61
2:B:146:TYR:CD2	2:B:150:PRO:HB3	2.36	0.61
1:A:206:ARG:HG2	1:A:216:THR:OG1	2.00	0.60
2:B:205:LEU:O	2:B:209:LEU:HG	2.01	0.60
1:A:455:ALA:HB3	1:A:467:VAL:O	2.02	0.60
1:A:210:LEU:HD21	1:A:215:THR:HG22	1.82	0.60
1:A:193:LEU:HD13	1:A:197:GLN:HG3	1.84	0.60
1:A:208:HIS:O	1:A:212:TRP:HD1	1.83	0.60
1:A:402:TRP:HE3	1:A:403:THR:HG1	1.47	0.60
2:B:135:ILE:N	2:B:135:ILE:HD12	2.16	0.60
1:A:545:ASN:N	1:A:545:ASN:HD22	1.99	0.59
2:B:135:ILE:H	2:B:135:ILE:HD12	1.67	0.59
1:A:139:THR:CB	1:A:140:PRO:CD	2.78	0.59
1:A:56:TYR:O	1:A:143:ARG:NH2	2.30	0.59
2:B:319:TYR:HE1	2:B:321:PRO:HG3	1.68	0.59
2:B:151:GLN:HB3	2:B:185:ASP:OD1	2.01	0.58
1:A:442:VAL:HB	1:A:481:ALA:HB1	1.84	0.58
2:B:64:LYS:HG2	2:B:65:LYS:N	2.18	0.58
1:A:296:THR:HG22	1:A:298:GLU:H	1.69	0.58
1:A:357:MET:HE3	6:A:1042:HOH:O	2.03	0.58
1:A:281:LYS:HE3	1:A:284:ARG:CZ	2.34	0.58

Continued on next page...

Continued from previous page...

Atom-1	Atom-2	Interatomic distance (Å)	Clash overlap (Å)
1:A:136:ASN:HB3	1:A:139:THR:HG23	1.85	0.58
1:A:279:LEU:HA	1:A:282:LEU:HD22	1.86	0.57
1:A:201:LYS:HA	1:A:201:LYS:HE2	1.86	0.57
1:A:125:ARG:HG2	1:A:146:TYR:O	2.03	0.57
2:B:420:PRO:O	2:B:423:VAL:HG12	2.05	0.57
1:A:136:ASN:HB3	1:A:139:THR:CG2	2.35	0.57
1:A:281:LYS:HG3	1:A:284:ARG:NE	2.20	0.57
1:A:329:ILE:HD11	1:A:375:ILE:HD12	1.86	0.57
2:B:103:LYS:HE3	2:B:179:VAL:HG23	1.85	0.56
2:B:320:ASP:OD2	2:B:320:ASP:N	2.35	0.56
2:B:72:ARG:NE	2:B:409:THR:HG22	2.19	0.56
2:B:111:VAL:HG11	2:B:187:LEU:HD22	1.87	0.56
1:A:220:LYS:NZ	1:A:220:LYS:HB2	2.21	0.56
2:B:332:GLN:HG3	2:B:338:THR:HG23	1.86	0.56
1:A:406:TRP:CH2	2:B:418:ASN:HB2	2.41	0.56
2:B:84:THR:O	2:B:154:LYS:NZ	2.29	0.56
1:A:474:ASN:O	1:A:478:GLU:HG3	2.06	0.56
2:B:53:GLU:CD	2:B:53:GLU:H	2.09	0.56
1:A:317:VAL:HG12	1:A:318:TYR:N	2.20	0.56
2:B:167:ILE:HG23	2:B:212:TRP:CE3	2.41	0.55
2:B:384:GLY:O	2:B:385:LYS:HD3	2.06	0.55
1:A:22:LYS:HE3	1:A:22:LYS:CA	2.33	0.55
2:B:174:GLN:C	2:B:176:PRO:HD3	2.27	0.55
1:A:44:GLU:HB3	1:A:46:LYS:HE3	1.87	0.55
1:A:328:GLU:HG3	1:A:390:LYS:CB	2.36	0.55
1:A:320:ASP:OD2	1:A:323:LYS:HE2	2.06	0.55
1:A:149:LEU:HD21	1:A:159:ILE:HG21	1.89	0.55
2:B:24:TRP:CG	2:B:25:PRO:HD2	2.41	0.55
2:B:270:ILE:O	2:B:272:PRO:HD3	2.06	0.55
1:A:225:PRO:HD3	1:A:227:PHE:CZ	2.41	0.55
2:B:160:PHE:CD1	2:B:160:PHE:O	2.60	0.55
1:A:22:LYS:HE3	1:A:23:GLN:H	1.70	0.55
1:A:244:ILE:HD11	1:A:263:LYS:HZ2	1.73	0.55
1:A:244:ILE:HD11	1:A:263:LYS:HZ1	1.71	0.54
1:A:441:TYR:HB3	1:A:545:ASN:ND2	2.23	0.54
1:A:34:LEU:HB3	1:A:132:ILE:HD12	1.89	0.54
1:A:473:THR:HG22	1:A:475:GLN:H	1.72	0.54
1:A:208:HIS:O	1:A:211:ARG:HG2	2.06	0.54
2:B:199:ARG:HG2	2:B:199:ARG:NH1	2.22	0.54
1:A:78:ARG:O	1:A:82:LYS:HD3	2.08	0.54
1:A:332:GLN:HG2	1:A:332:GLN:O	2.07	0.53

Continued on next page...

Continued from previous page...

Atom-1	Atom-2	Interatomic distance (Å)	Clash overlap (Å)
1:A:129:ALA:HA	1:A:144:TYR:O	2.08	0.53
2:B:353:LYS:HZ1	2:B:429:LEU:CB	2.21	0.53
1:A:136:ASN:C	1:A:138:GLU:N	2.62	0.53
1:A:402:TRP:CZ2	2:B:364:ASP:OD2	2.62	0.53
1:A:107:THR:HG22	1:A:109:LEU:HD13	1.91	0.53
1:A:261:VAL:O	1:A:265:ASN:OD1	2.27	0.53
1:A:344:GLU:HB3	1:A:347:LYS:HB2	1.91	0.53
1:A:44:GLU:HB3	1:A:46:LYS:CE	2.39	0.52
2:B:429:LEU:O	2:B:430:GLU:C	2.48	0.52
1:A:219:LYS:HA	1:A:222:GLN:CD	2.30	0.52
1:A:336:GLN:OE1	1:A:355:ALA:HB2	2.10	0.52
2:B:114:ALA:HB1	2:B:160:PHE:CZ	2.45	0.52
2:B:164:MET:O	2:B:168:LEU:HG	2.10	0.52
1:A:21:VAL:HG22	1:A:59:PRO:HG3	1.92	0.52
1:A:225:PRO:HA	1:A:226:PRO:C	2.30	0.51
1:A:136:ASN:ND2	1:A:139:THR:HG23	2.19	0.51
2:B:175:ASN:HD21	2:B:201:LYS:HZ2	1.55	0.51
2:B:115:TYR:OH	2:B:157:PRO:HG3	2.10	0.51
2:B:28:GLU:O	2:B:32:LYS:HB2	2.10	0.51
1:A:86:ASP:HA	1:A:154:LYS:NZ	2.25	0.51
1:A:206:ARG:NH2	1:A:218:ASP:OD2	2.43	0.51
2:B:424:LYS:HB2	6:B:1061:HOH:O	2.10	0.51
2:B:183:TYR:OH	2:B:386:THR:HG23	2.11	0.51
2:B:58:THR:HG23	2:B:76:ASP:O	2.11	0.51
1:A:108:VAL:HG12	1:A:227:PHE:CE1	2.45	0.50
1:A:271:TYR:CE1	1:A:314:VAL:HG22	2.47	0.50
2:B:5:ILE:HG23	2:B:6:GLU:N	2.25	0.50
1:A:402:TRP:HE3	1:A:403:THR:OG1	1.95	0.50
2:B:106:VAL:HA	2:B:189:VAL:O	2.12	0.50
1:A:312:GLU:HG3	1:A:312:GLU:O	2.12	0.50
1:A:319:TYR:HA	1:A:349:LEU:HD21	1.94	0.50
2:B:116:PHE:HZ	2:B:151:GLN:HE21	1.60	0.50
1:A:12:LEU:HD11	1:A:127:TYR:CE1	2.47	0.50
2:B:252:TRP:CZ3	2:B:260:LEU:HD22	2.47	0.50
2:B:73:LYS:NZ	2:B:146:TYR:OH	2.40	0.50
1:A:27:THR:CG2	1:A:29:GLU:H	2.25	0.50
1:A:240:THR:OG1	1:A:241:VAL:N	2.45	0.50
1:A:330:GLN:NE2	1:A:340:GLN:OE1	2.38	0.50
2:B:175:ASN:HD21	2:B:201:LYS:CE	2.24	0.49
1:A:325:LEU:HB3	1:A:387:PRO:HB3	1.93	0.49
2:B:303:LEU:O	2:B:307:ARG:HB2	2.12	0.49

Continued on next page...

Continued from previous page...

Atom-1	Atom-2	Interatomic distance (Å)	Clash overlap (Å)
2:B:295:LEU:HD12	2:B:295:LEU:H	1.78	0.49
1:A:515:SER:O	1:A:519:ASN:ND2	2.45	0.49
2:B:295:LEU:CD1	2:B:295:LEU:N	2.76	0.49
2:B:429:LEU:O	2:B:430:GLU:O	2.30	0.49
1:A:85:GLN:C	1:A:154:LYS:HZ3	2.16	0.49
2:B:193:LEU:HD21	2:B:197:GLN:HB3	1.93	0.49
2:B:97:PRO:C	2:B:99:GLY:H	2.16	0.49
1:A:216:THR:HB	1:A:217:PRO:HD2	1.95	0.49
1:A:429:LEU:HB3	6:A:1075:HOH:O	2.12	0.49
1:A:343:GLN:HG3	1:A:349:LEU:CD1	2.41	0.48
1:A:178:ILE:HD12	1:A:191:SER:HB3	1.94	0.48
2:B:241:VAL:HG21	6:B:1173:HOH:O	2.12	0.48
1:A:497:THR:O	1:A:535:TRP:HA	2.13	0.48
2:B:79:GLU:O	2:B:83:ARG:HG3	2.13	0.48
2:B:146:TYR:CG	2:B:150:PRO:HB3	2.48	0.48
2:B:274:ILE:HA	2:B:306:ASN:OD1	2.13	0.48
2:B:419:THR:HG23	2:B:423:VAL:CG1	2.44	0.48
2:B:104:LYS:HD2	2:B:192:ASP:O	2.13	0.48
1:A:535:TRP:CH2	1:A:537:PRO:HG3	2.48	0.48
1:A:39:THR:O	1:A:43:LYS:CE	2.60	0.48
2:B:302:GLU:HG3	6:B:1171:HOH:O	2.12	0.48
1:A:209:LEU:HB3	1:A:214:LEU:HB2	1.95	0.48
2:B:195:ILE:HG12	2:B:199:ARG:HE	1.78	0.48
1:A:498:ASP:HA	1:A:536:VAL:O	2.14	0.48
1:A:86:ASP:HA	1:A:154:LYS:HZ3	1.77	0.48
2:B:233:GLU:CD	2:B:233:GLU:H	2.17	0.48
1:A:278:GLN:NE2	1:A:278:GLN:HA	2.28	0.48
1:A:21:VAL:HG22	1:A:59:PRO:CG	2.44	0.48
1:A:530:LYS:HA	6:A:1073:HOH:O	2.12	0.48
1:A:197:GLN:HA	1:A:197:GLN:HE21	1.78	0.48
2:B:151:GLN:HG3	6:B:1006:HOH:O	2.13	0.48
1:A:257:ILE:HD12	1:A:282:LEU:HD23	1.96	0.48
1:A:340:GLN:HA	1:A:351:THR:HA	1.95	0.47
2:B:135:ILE:CD1	2:B:135:ILE:H	2.27	0.47
1:A:12:LEU:HD11	1:A:127:TYR:CZ	2.49	0.47
1:A:108:VAL:HG12	1:A:227:PHE:HE1	1.79	0.47
1:A:475:GLN:HB3	1:A:501:TYR:CE2	2.49	0.47
1:A:420:PRO:HA	1:A:421:PRO:C	2.34	0.47
2:B:154:LYS:O	2:B:157:PRO:HD2	2.13	0.47
1:A:21:VAL:O	1:A:57:ASN:ND2	2.48	0.47
2:B:206:ARG:O	2:B:209:LEU:HB2	2.15	0.47

Continued on next page...

Continued from previous page...

Atom-1	Atom-2	Interatomic distance (Å)	Clash overlap (Å)
1:A:211:ARG:CB	1:A:211:ARG:NH1	2.78	0.47
1:A:438:GLU:OE1	1:A:459:THR:HG21	2.15	0.47
1:A:53:GLU:O	1:A:55:PRO:HD3	2.15	0.47
1:A:23:GLN:NE2	1:A:24:TRP:CD1	2.83	0.47
1:A:193:LEU:CD1	1:A:201:LYS:HG3	2.45	0.47
1:A:406:TRP:CZ3	2:B:418:ASN:HA	2.50	0.47
1:A:545:ASN:N	1:A:545:ASN:ND2	2.63	0.47
1:A:406:TRP:CH2	2:B:418:ASN:HA	2.50	0.47
1:A:63:ILE:N	1:A:63:ILE:HD12	2.31	0.47
2:B:13:LYS:HD2	2:B:16:MET:CE	2.45	0.46
2:B:105:SER:O	2:B:190:GLY:HA2	2.15	0.46
1:A:483:TYR:CZ	1:A:520:GLN:HB3	2.51	0.46
1:A:463:ARG:NH2	1:A:488:ASP:O	2.45	0.46
2:B:295:LEU:H	2:B:295:LEU:CD1	2.28	0.46
1:A:54:ASN:HD22	1:A:143:ARG:HH22	1.61	0.46
2:B:97:PRO:C	2:B:99:GLY:N	2.69	0.46
1:A:204:GLU:O	1:A:207:GLN:N	2.48	0.46
1:A:177:ASP:C	1:A:178:ILE:HD13	2.36	0.46
1:A:211:ARG:HB2	1:A:211:ARG:NH1	2.30	0.46
2:B:195:ILE:O	2:B:199:ARG:HD2	2.16	0.46
1:A:91:GLN:CG	1:A:92:LEU:H	2.22	0.46
1:A:473:THR:O	1:A:475:GLN:N	2.49	0.46
1:A:31:ILE:O	1:A:35:VAL:HG23	2.15	0.46
1:A:111:VAL:HG22	1:A:185:ASP:O	2.15	0.46
1:A:363:ASN:ND2	1:A:401:TRP:CZ3	2.84	0.46
1:A:441:TYR:HB3	1:A:545:ASN:HD21	1.81	0.45
1:A:200:THR:O	1:A:204:GLU:HG3	2.16	0.45
2:B:279:LEU:O	2:B:282:LEU:HB2	2.16	0.45
1:A:317:VAL:HG12	1:A:318:TYR:H	1.81	0.45
2:B:118:VAL:HB	2:B:149:LEU:HG	1.97	0.45
2:B:173:LYS:O	2:B:176:PRO:HD3	2.17	0.45
1:A:54:ASN:O	1:A:143:ARG:NH2	2.47	0.45
1:A:210:LEU:C	1:A:212:TRP:H	2.20	0.45
1:A:317:VAL:HG21	1:A:347:LYS:HD3	1.99	0.45
1:A:331:LYS:HB2	1:A:337:TRP:CZ3	2.52	0.45
1:A:26:LEU:HD12	1:A:133:PRO:HD2	1.99	0.45
2:B:379:SER:HA	2:B:383:TRP:CE3	2.51	0.45
1:A:473:THR:O	1:A:476:LYS:N	2.50	0.45
1:A:347:LYS:HA	1:A:347:LYS:HE2	1.99	0.45
1:A:18:GLY:HA3	1:A:56:TYR:CE1	2.52	0.45
1:A:253:THR:HG23	1:A:255:ASN:H	1.81	0.45

Continued on next page...

Continued from previous page...

Atom-1	Atom-2	Interatomic distance (Å)	Clash overlap (Å)
1:A:105:SER:HB2	1:A:198:HIS:ND1	2.32	0.45
2:B:57:ASN:HD22	2:B:143:ARG:NH1	2.15	0.45
2:B:98:ALA:HB1	2:B:101:LYS:HZ1	1.80	0.44
2:B:75:VAL:HG11	2:B:77:PHE:CZ	2.52	0.44
1:A:46:LYS:HG3	1:A:148:VAL:HG21	1.98	0.44
1:A:315:HIS:HE1	1:A:347:LYS:NZ	2.15	0.44
1:A:164:MET:HG3	1:A:168:LEU:HD22	1.98	0.44
1:A:130:PHE:CZ	1:A:144:TYR:HB2	2.53	0.44
2:B:27:THR:OG1	2:B:30:LYS:HG2	2.18	0.44
1:A:120:LEU:O	1:A:121:ASP:C	2.54	0.44
1:A:169:GLU:HB3	1:A:170:PRO:CD	2.47	0.44
2:B:64:LYS:HG2	2:B:65:LYS:H	1.83	0.44
1:A:50:ILE:HD12	1:A:54:ASN:CB	2.48	0.44
2:B:96:HIS:HA	2:B:97:PRO:HD2	1.78	0.44
1:A:483:TYR:CE1	1:A:520:GLN:HB3	2.52	0.44
1:A:245:VAL:HG12	1:A:246:LEU:N	2.32	0.44
1:A:114:ALA:HB1	1:A:160:PHE:CZ	2.52	0.44
1:A:473:THR:O	1:A:474:ASN:C	2.56	0.44
1:A:361:HIS:CE1	1:A:513:SER:HG	2.30	0.44
1:A:408:ALA:HB1	2:B:364:ASP:HB3	2.00	0.44
1:A:253:THR:HG23	1:A:289:LEU:O	2.17	0.44
1:A:407:GLN:HG2	2:B:393:ILE:HA	2.00	0.44
2:B:228:LEU:O	2:B:229:TRP:HB2	2.18	0.43
1:A:211:ARG:HB3	1:A:211:ARG:HH11	1.83	0.43
1:A:492:GLU:OE2	1:A:530:LYS:HD2	2.18	0.43
2:B:40:GLU:HG3	2:B:44:GLU:OE2	2.18	0.43
2:B:171:PHE:CE1	2:B:205:LEU:HA	2.53	0.43
2:B:175:ASN:N	2:B:176:PRO:HD3	2.33	0.43
1:A:206:ARG:NE	1:A:217:PRO:O	2.48	0.43
1:A:344:GLU:O	1:A:345:PRO:C	2.55	0.43
2:B:208:HIS:ND1	2:B:208:HIS:O	2.51	0.43
2:B:85:GLN:HA	6:B:1097:HOH:O	2.17	0.43
1:A:79:GLU:OE2	1:A:83:ARG:NH1	2.51	0.43
2:B:202:ILE:HG21	2:B:227:PHE:HE1	1.82	0.43
1:A:62:ALA:C	1:A:63:ILE:HD12	2.38	0.43
1:A:33:ALA:O	1:A:37:ILE:HG12	2.18	0.43
2:B:122:GLU:O	2:B:122:GLU:OE1	2.37	0.43
2:B:368:LEU:HD23	2:B:368:LEU:HA	1.83	0.43
1:A:219:LYS:HD3	1:A:219:LYS:O	2.18	0.43
2:B:78:ARG:HD2	2:B:413:GLU:OE1	2.19	0.43
1:A:97:PRO:HB2	1:A:239:TRP:CD2	2.53	0.43

Continued on next page...

Continued from previous page...

Atom-1	Atom-2	Interatomic distance (Å)	Clash overlap (Å)
1:A:516:GLU:N	6:A:1071:HOH:O	2.40	0.43
1:A:51:GLY:HA2	1:A:52:PRO:HD3	1.92	0.43
1:A:417:VAL:O	1:A:417:VAL:HG13	2.19	0.43
2:B:87:PHE:C	2:B:88:TRP:HD1	2.22	0.43
1:A:154:LYS:HE3	6:A:1003:HOH:O	2.19	0.43
2:B:379:SER:HB2	2:B:387:PRO:HD3	2.01	0.43
2:B:57:ASN:HD22	2:B:143:ARG:HH12	1.65	0.43
2:B:54:ASN:ND2	2:B:126:LYS:HB2	2.34	0.43
2:B:171:PHE:HE1	2:B:204:GLU:O	2.02	0.42
1:A:218:ASP:HB2	1:A:221:HIS:CE1	2.54	0.42
1:A:149:LEU:HA	1:A:150:PRO:HD3	1.90	0.42
1:A:457:TYR:C	1:A:457:TYR:CD1	2.92	0.42
2:B:34:LEU:HD12	2:B:34:LEU:HA	1.85	0.42
2:B:206:ARG:HD2	2:B:225:PRO:O	2.19	0.42
2:B:65:LYS:CE	2:B:66:LYS:H	2.23	0.42
2:B:366:LYS:HA	2:B:405:TYR:CD1	2.54	0.42
1:A:281:LYS:HE3	1:A:284:ARG:NH2	2.34	0.42
2:B:320:ASP:OD1	2:B:323:LYS:HE2	2.19	0.42
1:A:410:TRP:CE3	2:B:363:ASN:HB2	2.54	0.42
2:B:210:LEU:HD22	2:B:224:GLU:HB2	2.01	0.42
2:B:175:ASN:ND2	2:B:201:LYS:CE	2.82	0.42
1:A:27:THR:HG23	1:A:29:GLU:H	1.82	0.42
1:A:358:ARG:HG3	1:A:370:GLU:OE2	2.19	0.42
2:B:353:LYS:NZ	2:B:428:GLN:HG3	2.34	0.42
1:A:41:MET:HB3	1:A:47:ILE:HG12	2.00	0.42
1:A:8:VAL:HG13	2:B:53:GLU:HG3	1.98	0.42
2:B:103:LYS:HE3	2:B:179:VAL:HG21	2.02	0.42
1:A:347:LYS:CE	1:A:347:LYS:HA	2.50	0.42
2:B:421:PRO:O	2:B:425:LEU:HD13	2.20	0.42
1:A:505:ILE:O	1:A:510:PRO:HD3	2.19	0.42
2:B:332:GLN:CG	2:B:338:THR:HG23	2.49	0.42
1:A:108:VAL:CG1	1:A:227:PHE:CE1	3.03	0.42
1:A:9:PRO:O	2:B:53:GLU:HG2	2.20	0.42
1:A:246:LEU:HD22	1:A:260:LEU:CD1	2.50	0.42
1:A:136:ASN:HB3	1:A:139:THR:OG1	2.19	0.42
2:B:65:LYS:NZ	2:B:227:PHE:O	2.52	0.42
2:B:129:ALA:HA	2:B:144:TYR:O	2.19	0.42
1:A:29:GLU:CD	1:A:71:TRP:HH2	2.22	0.42
1:A:220:LYS:HZ2	1:A:220:LYS:HB2	1.84	0.42
1:A:406:TRP:HH2	2:B:418:ASN:HB2	1.81	0.42
1:A:503:LEU:HD11	1:A:507:GLN:NE2	2.35	0.42

Continued on next page...

Continued from previous page...

Atom-1	Atom-2	Interatomic distance (Å)	Clash overlap (Å)
2:B:301:LEU:HB3	6:B:1170:HOH:O	2.20	0.42
1:A:91:GLN:CG	1:A:92:LEU:N	2.78	0.41
1:A:126:LYS:NZ	1:A:127:TYR:CZ	2.88	0.41
2:B:325:LEU:HD21	2:B:383:TRP:CE3	2.54	0.41
2:B:382:ILE:HG22	2:B:383:TRP:CE2	2.55	0.41
1:A:246:LEU:HD22	1:A:260:LEU:HD11	2.03	0.41
1:A:108:VAL:CG1	1:A:223:LYS:HB2	2.51	0.41
1:A:170:PRO:O	1:A:173:LYS:N	2.51	0.41
1:A:411:ILE:HG22	1:A:412:PRO:O	2.21	0.41
2:B:195:ILE:HD11	2:B:199:ARG:HH21	1.85	0.41
2:B:253:THR:O	2:B:257:ILE:HG12	2.20	0.41
1:A:296:THR:HG22	1:A:297:GLU:N	2.35	0.41
1:A:187:LEU:HA	1:A:187:LEU:HD12	1.91	0.41
2:B:111:VAL:HG12	2:B:225:PRO:HG3	2.03	0.41
2:B:169:GLU:HB3	2:B:170:PRO:CD	2.39	0.41
2:B:229:TRP:CZ2	2:B:377:THR:HG21	2.56	0.41
2:B:72:ARG:HH11	2:B:72:ARG:HG3	1.86	0.41
2:B:13:LYS:HD2	2:B:16:MET:HE2	2.02	0.41
1:A:211:ARG:CB	1:A:211:ARG:HH11	2.33	0.41
2:B:319:TYR:CE1	2:B:321:PRO:HG3	2.53	0.41
1:A:59:PRO:C	1:A:60:VAL:HG23	2.41	0.41
1:A:246:LEU:HA	1:A:247:PRO:HD3	1.78	0.41
2:B:47:ILE:HD12	2:B:144:TYR:CD1	2.56	0.41
2:B:266:TRP:CZ3	2:B:426:TRP:HB3	2.56	0.41
2:B:167:ILE:HG23	2:B:212:TRP:CD2	2.55	0.40
2:B:16:MET:HE3	2:B:83:ARG:HA	2.03	0.40
2:B:419:THR:HG23	2:B:423:VAL:HG11	2.03	0.40
2:B:24:TRP:CD1	2:B:25:PRO:HD2	2.56	0.40
1:A:469:LEU:CD1	1:A:480:GLN:HG3	2.51	0.40
2:B:307:ARG:NH1	6:B:1106:HOH:O	2.52	0.40
1:A:167:ILE:HG22	1:A:167:ILE:O	2.21	0.40
2:B:171:PHE:CZ	2:B:205:LEU:HB2	2.57	0.40
2:B:319:TYR:CD1	2:B:319:TYR:C	2.93	0.40
1:A:51:GLY:O	1:A:53:GLU:N	2.49	0.40
2:B:146:TYR:CE2	2:B:150:PRO:HB3	2.56	0.40
1:A:26:LEU:HB2	1:A:133:PRO:HG3	2.04	0.40
1:A:358:ARG:NH2	2:B:394:GLN:CG	2.84	0.40
1:A:400:THR:O	1:A:404:GLU:HG2	2.21	0.40
1:A:94:ILE:HD13	1:A:230:MET:HG3	2.02	0.40
2:B:332:GLN:HB2	2:B:336:GLN:O	2.22	0.40

There are no symmetry-related clashes.

5.3 Torsion angles [i](#)

5.3.1 Protein backbone [i](#)

In the following table, the Percentiles column shows the percent Ramachandran outliers of the chain as a percentile score with respect to all X-ray entries followed by that with respect to entries of similar resolution.

The Analysed column shows the number of residues for which the backbone conformation was analysed, and the total number of residues.

Mol	Chain	Analysed	Favoured	Allowed	Outliers	Percentiles	
1	A	511/542 (94%)	469 (92%)	31 (6%)	11 (2%)	8	12
2	B	393/427 (92%)	360 (92%)	26 (7%)	7 (2%)	11	17
All	All	904/969 (93%)	829 (92%)	57 (6%)	18 (2%)	9	14

All (18) Ramachandran outliers are listed below:

Mol	Chain	Res	Type
1	A	137	ASN
1	A	139	THR
1	A	140	PRO
2	B	225	PRO
2	B	430	GLU
1	A	138	GLU
2	B	277	ARG
1	A	195	ILE
1	A	418	ASN
1	A	474	ASN
2	B	116	PHE
1	A	244	ILE
1	A	345	PRO
2	B	170	PRO
2	B	284	ARG
1	A	52	PRO
1	A	18	GLY
2	B	392	PRO

5.3.2 Protein sidechains [i](#)

In the following table, the Percentiles column shows the percent sidechain outliers of the chain as a percentile score with respect to all X-ray entries followed by that with respect to entries of similar resolution.

The Analysed column shows the number of residues for which the sidechain conformation was analysed, and the total number of residues.

Mol	Chain	Analysed	Rotameric	Outliers	Percentiles	
1	A	467/483 (97%)	424 (91%)	43 (9%)	11	20
2	B	370/389 (95%)	341 (92%)	29 (8%)	16	28
All	All	837/872 (96%)	765 (91%)	72 (9%)	13	23

All (72) residues with a non-rotameric sidechain are listed below:

Mol	Chain	Res	Type
1	A	5	ILE
1	A	6	GLU
1	A	7	THR
1	A	21	VAL
1	A	22	LYS
1	A	27	THR
1	A	43	LYS
1	A	44	GLU
1	A	46	LYS
1	A	53	GLU
1	A	61	PHE
1	A	71	TRP
1	A	104	LYS
1	A	122	GLU
1	A	134	SER
1	A	138	GLU
1	A	139	THR
1	A	142	ILE
1	A	168	LEU
1	A	206	ARG
1	A	253	THR
1	A	264	LEU
1	A	282	LEU
1	A	314	VAL
1	A	336	GLN
1	A	340	GLN
1	A	345	PRO
1	A	347	LYS
1	A	353	LYS
1	A	358	ARG
1	A	362	THR
1	A	374	LYS
1	A	388	LYS

Continued on next page...

Continued from previous page...

Mol	Chain	Res	Type
1	A	395	LYS
1	A	418	ASN
1	A	443	ASP
1	A	479	LEU
1	A	480	GLN
1	A	484	LEU
1	A	507	GLN
1	A	516	GLU
1	A	517	LEU
1	A	533	LEU
2	B	16	MET
2	B	34	LEU
2	B	53	GLU
2	B	60	VAL
2	B	65	LYS
2	B	86	ASP
2	B	109	LEU
2	B	113	ASP
2	B	122	GLU
2	B	133	PRO
2	B	199	ARG
2	B	207	GLN
2	B	225	PRO
2	B	249	LYS
2	B	268	SER
2	B	283	LEU
2	B	289	LEU
2	B	295	LEU
2	B	314	VAL
2	B	323	LYS
2	B	330	GLN
2	B	356	ARG
2	B	368	LEU
2	B	388	LYS
2	B	407	GLN
2	B	410	TRP
2	B	413	GLU
2	B	414	TRP
2	B	418	ASN

Some sidechains can be flipped to improve hydrogen bonding and reduce clashes. All (25) such sidechains are listed below:

Mol	Chain	Res	Type
1	A	54	ASN
1	A	136	ASN
1	A	137	ASN
1	A	161	GLN
1	A	182	GLN
1	A	197	GLN
1	A	235	HIS
1	A	265	ASN
1	A	278	GLN
1	A	315	HIS
1	A	418	ASN
1	A	475	GLN
1	A	480	GLN
1	A	507	GLN
1	A	509	GLN
1	A	520	GLN
1	A	524	GLN
1	A	545	ASN
2	B	57	ASN
2	B	147	ASN
2	B	175	ASN
2	B	255	ASN
2	B	278	GLN
2	B	330	GLN
2	B	336	GLN

5.3.3 RNA ⓘ

There are no RNA molecules in this entry.

5.4 Non-standard residues in protein, DNA, RNA chains ⓘ

1 non-standard protein/DNA/RNA residue is modelled in this entry.

In the following table, the Counts columns list the number of bonds (or angles) for which Mogul statistics could be retrieved, the number of bonds (or angles) that are observed in the model and the number of bonds (or angles) that are defined in the chemical component dictionary. The Link column lists molecule types, if any, to which the group is linked. The Z score for a bond length (or angle) is the number of standard deviations the observed value is removed from the expected value. A bond length (or angle) with $|Z| > 2$ is considered an outlier worth inspection. RMSZ is the root-mean-square of all Z scores of the bond lengths (or angles).

Mol	Type	Chain	Res	Link	Bond lengths			Bond angles		
					Counts	RMSZ	# Z > 2	Counts	RMSZ	# Z > 2
1	CSD	A	280	1	3,7,8	0.51	0	3,8,10	4.79	1 (33%)

In the following table, the Chirals column lists the number of chiral outliers, the number of chiral centers analysed, the number of these observed in the model and the number defined in the chemical component dictionary. Similar counts are reported in the Torsion and Rings columns. '-' means no outliers of that kind were identified.

Mol	Type	Chain	Res	Link	Chirals	Torsions	Rings
1	CSD	A	280	1	-	1/2/6/8	0/0/0/0

There are no bond length outliers.

All (1) bond angle outliers are listed below:

Mol	Chain	Res	Type	Atoms	Z	Observed(°)	Ideal(°)
1	A	280	CSD	OD1-SG-CB	8.05	118.82	105.40

There are no chirality outliers.

All (1) torsion outliers are listed below:

Mol	Chain	Res	Type	Atoms
1	A	280	CSD	CA-CB-SG-OD1

There are no ring outliers.

No monomer is involved in short contacts.

5.5 Carbohydrates [i](#)

There are no carbohydrates in this entry.

5.6 Ligand geometry [i](#)

Of 5 ligands modelled in this entry, 1 is monoatomic - leaving 4 for Mogul analysis.

In the following table, the Counts columns list the number of bonds (or angles) for which Mogul statistics could be retrieved, the number of bonds (or angles) that are observed in the model and the number of bonds (or angles) that are defined in the chemical component dictionary. The Link column lists molecule types, if any, to which the group is linked. The Z score for a bond length (or angle) is the number of standard deviations the observed value is removed from the expected value. A bond length (or angle) with $|Z| > 2$ is considered an outlier worth inspection. RMSZ is the root-mean-square of all Z scores of the bond lengths (or angles).

Mol	Type	Chain	Res	Link	Bond lengths			Bond angles		
					Counts	RMSZ	# Z > 2	Counts	RMSZ	# Z > 2
3	PO4	A	1300	-	4,4,4	1.13	0	6,6,6	0.27	0
3	PO4	A	1301	-	4,4,4	1.16	0	6,6,6	0.27	0
3	PO4	A	1302	-	4,4,4	1.03	0	6,6,6	0.27	0
5	HBQ	A	999	-	20,21,21	1.39	3 (15%)	26,30,30	1.13	3 (11%)

In the following table, the Chirals column lists the number of chiral outliers, the number of chiral centers analysed, the number of these observed in the model and the number defined in the chemical component dictionary. Similar counts are reported in the Torsion and Rings columns. '-' means no outliers of that kind were identified.

Mol	Type	Chain	Res	Link	Chirals	Torsions	Rings
3	PO4	A	1300	-	-	0/0/0/0	0/0/0/0
3	PO4	A	1301	-	-	0/0/0/0	0/0/0/0
3	PO4	A	1302	-	-	0/0/0/0	0/0/0/0
5	HBQ	A	999	-	-	0/10/26/26	0/1/2/2

All (3) bond length outliers are listed below:

Mol	Chain	Res	Type	Atoms	Z	Observed(Å)	Ideal(Å)
5	A	999	HBQ	C4-C3	2.10	1.42	1.40
5	A	999	HBQ	C11-N1	2.82	1.41	1.37
5	A	999	HBQ	C3-N1	3.12	1.47	1.42

All (3) bond angle outliers are listed below:

Mol	Chain	Res	Type	Atoms	Z	Observed(°)	Ideal(°)
5	A	999	HBQ	O3-C11-N1	-2.27	119.70	124.13
5	A	999	HBQ	O2-C12-C13	-2.04	101.85	107.12
5	A	999	HBQ	O2-C11-N1	2.81	114.12	110.67

There are no chirality outliers.

There are no torsion outliers.

There are no ring outliers.

No monomer is involved in short contacts.

5.7 Other polymers ⓘ

There are no such residues in this entry.

5.8 Polymer linkage issues ⓘ

There are no chain breaks in this entry.

6 Fit of model and data

6.1 Protein, DNA and RNA chains

In the following table, the column labelled ‘#RSRZ> 2’ contains the number (and percentage) of RSRZ outliers, followed by percent RSRZ outliers for the chain as percentile scores relative to all X-ray entries and entries of similar resolution. The OWAB column contains the minimum, median, 95th percentile and maximum values of the occupancy-weighted average B-factor per residue. The column labelled ‘Q< 0.9’ lists the number of (and percentage) of residues with an average occupancy less than 0.9.

Mol	Chain	Analysed	<RSRZ>	#RSRZ>2		OWAB(Å ²)	Q<0.9
1	A	518/542 (95%)	-0.04	20 (3%)	43 49	29, 59, 104, 137	0
2	B	403/427 (94%)	0.25	40 (9%)	9 10	29, 58, 108, 125	0
All	All	921/969 (95%)	0.09	60 (6%)	22 25	29, 59, 105, 137	0

All (60) RSRZ outliers are listed below:

Mol	Chain	Res	Type	RSRZ
1	A	245	VAL	5.1
2	B	431	LYS	4.9
2	B	195	ILE	4.7
1	A	14	PRO	4.6
2	B	88	TRP	4.6
1	A	402	TRP	4.5
1	A	539	HIS	4.0
2	B	211	ARG	4.0
1	A	243	PRO	3.8
2	B	232	TYR	3.7
1	A	538	ALA	3.6
1	A	137	ASN	3.6
2	B	168	LEU	3.5
1	A	311	LYS	3.3
1	A	469	LEU	3.3
2	B	429	LEU	3.2
2	B	67	ASP	3.2
2	B	362	THR	3.1
2	B	167	ILE	3.0
1	A	52	PRO	3.0
1	A	71	TRP	3.0
2	B	184	MET	3.0
1	A	34	LEU	2.9
2	B	212	TRP	2.9

Continued on next page...

Continued from previous page...

Mol	Chain	Res	Type	RSRZ
2	B	87	PHE	2.8
2	B	356	ARG	2.8
1	A	468	THR	2.8
1	A	139	THR	2.7
2	B	183	TYR	2.7
2	B	376	THR	2.7
2	B	322	SER	2.7
2	B	377	THR	2.7
1	A	403	THR	2.6
2	B	317	VAL	2.6
2	B	241	VAL	2.5
2	B	171	PHE	2.5
2	B	409	THR	2.4
2	B	5	ILE	2.4
2	B	410	TRP	2.4
1	A	244	ILE	2.4
2	B	293	ILE	2.4
2	B	199	ARG	2.3
2	B	334	GLN	2.3
2	B	210	LEU	2.3
2	B	284	ARG	2.3
2	B	421	PRO	2.3
2	B	224	GLU	2.2
2	B	344	GLU	2.2
2	B	323	LYS	2.2
2	B	238	LYS	2.2
2	B	8	VAL	2.2
2	B	372	VAL	2.2
2	B	237	ASP	2.2
2	B	102	LYS	2.1
2	B	165	THR	2.1
2	B	281	LYS	2.1
1	A	472	THR	2.1
1	A	545	ASN	2.1
1	A	138	GLU	2.1
1	A	473	THR	2.0

6.2 Non-standard residues in protein, DNA, RNA chains ⓘ

In the following table, the Atoms column lists the number of modelled atoms in the group and the number defined in the chemical component dictionary. LLDF column lists the quality of electron density of the group with respect to its neighbouring residues in protein, DNA or RNA chains.

The B-factors column lists the minimum, median, 95th percentile and maximum values of B factors of atoms in the group. The column labelled 'Q< 0.9' lists the number of atoms with occupancy less than 0.9.

Mol	Type	Chain	Res	Atoms	RSCC	RSR	LLDF	B-factors(Å ²)	Q<0.9
1	CSD	A	280	8/9	0.96	0.11	-	42,56,89,100	0

6.3 Carbohydrates [i](#)

There are no carbohydrates in this entry.

6.4 Ligands [i](#)

In the following table, the Atoms column lists the number of modelled atoms in the group and the number defined in the chemical component dictionary. LLDF column lists the quality of electron density of the group with respect to its neighbouring residues in protein, DNA or RNA chains. The B-factors column lists the minimum, median, 95th percentile and maximum values of B factors of atoms in the group. The column labelled 'Q< 0.9' lists the number of atoms with occupancy less than 0.9.

Mol	Type	Chain	Res	Atoms	RSCC	RSR	LLDF	B-factors(Å ²)	Q<0.9
3	PO4	A	1300	5/5	0.90	0.17	5.13	115,118,125,138	0
4	MG	A	1303	1/1	0.96	0.20	1.06	66,66,66,66	0
3	PO4	A	1301	5/5	0.95	0.11	-0.67	91,113,117,118	0
5	HBQ	A	999	20/20	0.98	0.12	-0.70	19,35,49,52	0
3	PO4	A	1302	5/5	0.87	0.16	-	122,123,133,136	0

6.5 Other polymers [i](#)

There are no such residues in this entry.