



Full wwPDB X-ray Structure Validation Report ⓘ

Feb 1, 2016 – 11:25 AM GMT

PDB ID : 3OWX
Title : X-ray Structural study of quinone reductase II inhibition by compounds with micromolar to nanomolar range IC50 values
Authors : Pegan, S.D.; Sturdy, M.; Ferry, G.; Delagrangé, P.; Boutin, J.A.; Mesecar, A.D.
Deposited on : 2010-09-20
Resolution : 1.85 Å(reported)

This is a Full wwPDB X-ray Structure Validation Report for a publicly released PDB entry.
We welcome your comments at validation@mail.wwpdb.org
A user guide is available at
<http://wwpdb.org/validation/2016/XrayValidationReportHelp>
with specific help available everywhere you see the ⓘ symbol.

The following versions of software and data (see [references ⓘ](#)) were used in the production of this report:

MolProbity : 4.02b-467
Mogul : 1.7 (RC4), CSD as536be (2015)
Xtriage (Phenix) : 1.9-1692
EDS : rb-20026688
Percentile statistics : 20151230.v01 (using entries in the PDB archive December 30th 2015)
Refmac : 5.8.0135
CCP4 : 6.5.0
Ideal geometry (proteins) : Engh & Huber (2001)
Ideal geometry (DNA, RNA) : Parkinson et al. (1996)
Validation Pipeline (wwPDB-VP) : trunk26865

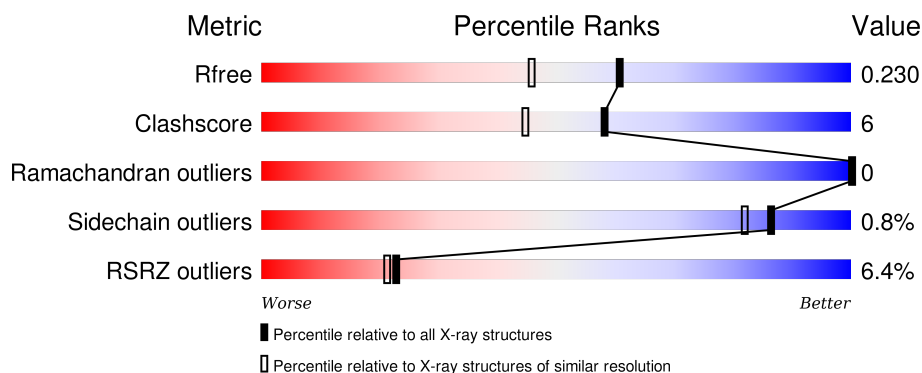
1 Overall quality at a glance

The following experimental techniques were used to determine the structure:

X-RAY DIFFRACTION


The reported resolution of this entry is 1.85 Å.

Percentile scores (ranging between 0-100) for global validation metrics of the entry are shown in the following graphic. The table shows the number of entries on which the scores are based.



Metric	Whole archive (#Entries)	Similar resolution (#Entries, resolution range(Å))
R_{free}	91344	1745 (1.86-1.86)
Clashscore	102246	1898 (1.86-1.86)
Ramachandran outliers	100387	1875 (1.86-1.86)
Sidechain outliers	100360	1875 (1.86-1.86)
RSRZ outliers	91569	1747 (1.86-1.86)

The table below summarises the geometric issues observed across the polymeric chains and their fit to the electron density. The red, orange, yellow and green segments on the lower bar indicate the fraction of residues that contain outliers for ≥ 3 , 2, 1 and 0 types of geometric quality criteria. A grey segment represents the fraction of residues that are not modelled. The numeric value for each fraction is indicated below the corresponding segment, with a dot representing fractions $\leq 5\%$. The upper red bar (where present) indicates the fraction of residues that have poor fit to the electron density. The numeric value is given above the bar.

Mol	Chain	Length	Quality of chain
1	A	231	
1	B	231	

The following table lists non-polymeric compounds, carbohydrate monomers and non-standard residues in protein, DNA, RNA chains that are outliers for geometric or electron-density-fit criteria:

Mol	Type	Chain	Res	Chirality	Geometry	Clashes	Electron density
4	XRA	A	233[A]	-	-	-	X
4	XRA	A	233[B]	-	-	-	X
4	XRA	B	233[A]	-	-	-	X
4	XRA	B	233[B]	-	-	-	X

2 Entry composition [i](#)

There are 5 unique types of molecules in this entry. The entry contains 4203 atoms, of which 0 are hydrogens and 0 are deuteriums.

In the tables below, the ZeroOcc column contains the number of atoms modelled with zero occupancy, the AltConf column contains the number of residues with at least one atom in alternate conformation and the Trace column contains the number of residues modelled with at most 2 atoms.

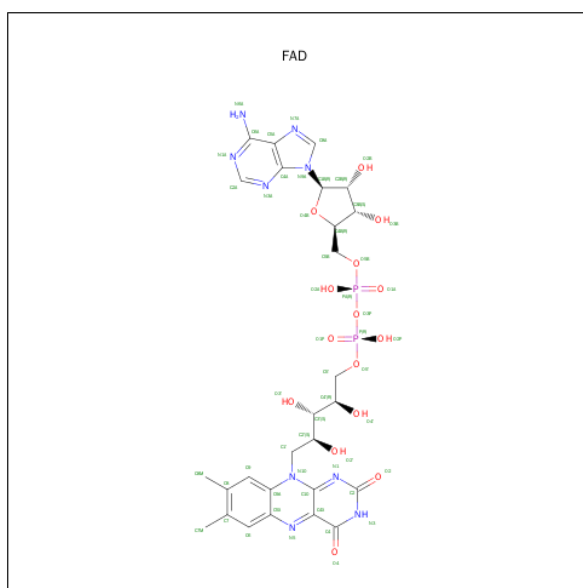
- Molecule 1 is a protein called Ribosyldihydronicotinamide dehydrogenase [quinone].

Mol	Chain	Residues	Atoms					ZeroOcc	AltConf	Trace
1	A	227	Total	C	N	O	S	0	0	0
			1805	1164	300	333	8			
1	B	228	Total	C	N	O	S	0	0	0
			1809	1166	301	334	8			

- Molecule 2 is ZINC ION (three-letter code: ZN) (formula: Zn).

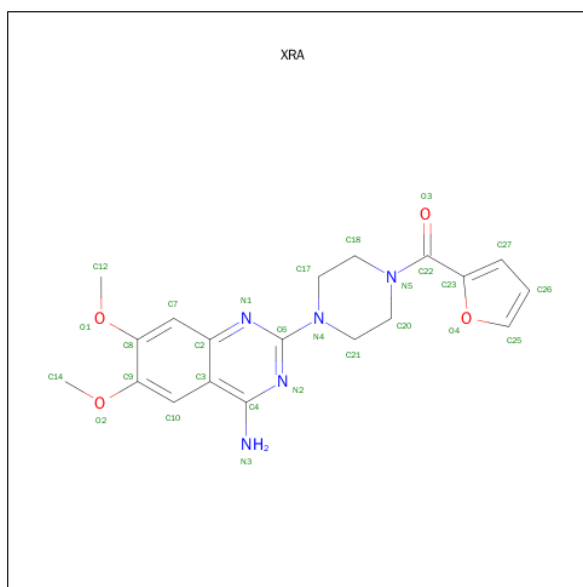
Mol	Chain	Residues	Atoms		ZeroOcc	AltConf
2	B	1	Total	Zn	0	0
			1	1		
2	A	1	Total	Zn	0	0
			1	1		

- Molecule 3 is FLAVIN-ADENINE DINUCLEOTIDE (three-letter code: FAD) (formula: C₂₇H₃₃N₉O₁₅P₂).



Mol	Chain	Residues	Atoms					ZeroOcc	AltConf
3	A	1	Total	C	N	O	P	0	0
			53	27	9	15	2		
3	B	1	Total	C	N	O	P	0	0
			53	27	9	15	2		

- Molecule 4 is 2-[4-(FURAN-2-YLCARBONYL)PIPERAZIN-1-YL]-6,7-DIMETHOXYQUINAZOLIN-4-AMINE (three-letter code: XRA) (formula: C₁₉H₂₁N₅O₄).



Mol	Chain	Residues	Atoms				ZeroOcc	AltConf
4	A	1	Total	C	N	O	0	1
			56	38	10	8		
4	B	1	Total	C	N	O	0	1
			56	38	10	8		

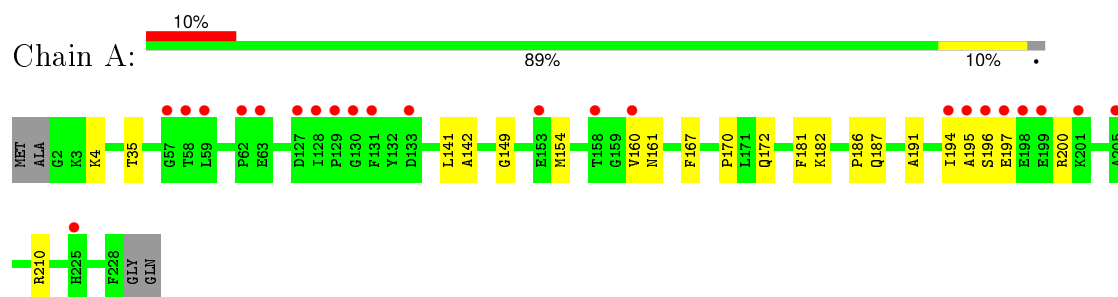
- Molecule 5 is water.

Mol	Chain	Residues	Atoms		ZeroOcc	AltConf
5	A	163	Total	O	0	0
			163	163		
5	B	206	Total	O	0	0
			206	206		

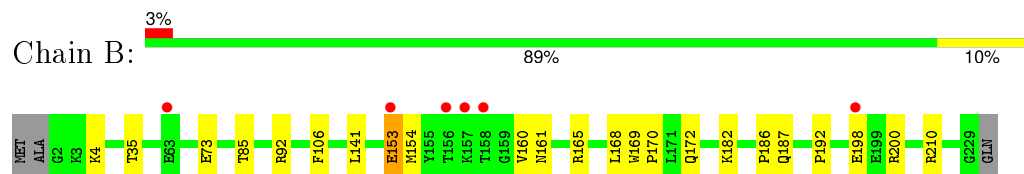
3 Residue-property plots [i](#)

These plots are drawn for all protein, RNA and DNA chains in the entry. The first graphic for a chain summarises the proportions of errors displayed in the second graphic. The second graphic shows the sequence view annotated by issues in geometry and electron density. Residues are color-coded according to the number of geometric quality criteria for which they contain at least one outlier: green = 0, yellow = 1, orange = 2 and red = 3 or more. A red dot above a residue indicates a poor fit to the electron density ($RSRZ > 2$). Stretches of 2 or more consecutive residues without any outlier are shown as a green connector. Residues present in the sample, but not in the model, are shown in grey.

- Molecule 1: Ribosyldihyronicotinamide dehydrogenase [quinone]



- Molecule 1: Ribosyldihyronicotinamide dehydrogenase [quinone]



4 Data and refinement statistics

Property	Value	Source
Space group	P 21 21 21	Depositor
Cell constants a, b, c, α , β , γ	56.51Å 83.50Å 106.80Å 90.00° 90.00° 90.00°	Depositor
Resolution (Å)	65.80 – 1.85 42.87 – 1.85	Depositor EDS
% Data completeness (in resolution range)	99.2 (65.80-1.85) 99.2 (42.87-1.85)	Depositor EDS
R_{merge}	0.08	Depositor
R_{sym}	(Not available)	Depositor
$\langle I/\sigma(I) \rangle$ ¹	2.27 (at 1.86Å)	Xtriage
Refinement program	REFMAC 5.5.0102	Depositor
R, R_{free}	0.192 , 0.230 0.194 , 0.230	Depositor DCC
R_{free} test set	2197 reflections (5.31%)	DCC
Wilson B-factor (Å ²)	19.2	Xtriage
Anisotropy	0.731	Xtriage
Bulk solvent k_{sol} (e/Å ³), B_{sol} (Å ²)	0.37 , 48.8	EDS
Estimated twinning fraction	No twinning to report.	Xtriage
L-test for twinning ²	$\langle L \rangle = 0.49$, $\langle L^2 \rangle = 0.33$	Xtriage
Outliers	0 of 43568 reflections	Xtriage
F_o, F_c correlation	0.95	EDS
Total number of atoms	4203	wwPDB-VP
Average B, all atoms (Å ²)	23.0	wwPDB-VP

Xtriage's analysis on translational NCS is as follows: *The largest off-origin peak in the Patterson function is 5.72% of the height of the origin peak. No significant pseudotranslation is detected.*

¹Intensities estimated from amplitudes.

²Theoretical values of $\langle |L| \rangle$, $\langle L^2 \rangle$ for acentric reflections are 0.5, 0.375 respectively for untwinned datasets, and 0.333, 0.2 for perfectly twinned datasets.

5 Model quality

5.1 Standard geometry

Bond lengths and bond angles in the following residue types are not validated in this section: ZN, XRA, FAD

The Z score for a bond length (or angle) is the number of standard deviations the observed value is removed from the expected value. A bond length (or angle) with $|Z| > 5$ is considered an outlier worth inspection. RMSZ is the root-mean-square of all Z scores of the bond lengths (or angles).

Mol	Chain	Bond lengths		Bond angles	
		RMSZ	# Z >5	RMSZ	# Z >5
1	A	0.53	0/1855	0.62	0/2518
1	B	0.54	0/1859	0.62	0/2523
All	All	0.53	0/3714	0.62	0/5041

There are no bond length outliers.

There are no bond angle outliers.

There are no chirality outliers.

There are no planarity outliers.

5.2 Too-close contacts

In the following table, the Non-H and H(model) columns list the number of non-hydrogen atoms and hydrogen atoms in the chain respectively. The H(added) column lists the number of hydrogen atoms added and optimized by MolProbity. The Clashes column lists the number of clashes within the asymmetric unit, whereas Symm-Clashes lists symmetry related clashes.

Mol	Chain	Non-H	H(model)	H(added)	Clashes	Symm-Clashes
1	A	1805	0	1760	20	0
1	B	1809	0	1763	17	0
2	A	1	0	0	0	0
2	B	1	0	0	0	0
3	A	53	0	31	2	0
3	B	53	0	31	1	0
4	A	56	0	42	10	0
4	B	56	0	42	8	0
5	A	163	0	0	0	0
5	B	206	0	0	6	0
All	All	4203	0	3669	44	0

The all-atom clashscore is defined as the number of clashes found per 1000 atoms (including hydrogen atoms). The all-atom clashscore for this structure is 6.

All (44) close contacts within the same asymmetric unit are listed below, sorted by their clash magnitude.

Atom-1	Atom-2	Interatomic distance (Å)	Clash overlap (Å)
1:A:195:ALA:HB1	1:A:196:SER:HA	1.33	1.09
1:A:154:MET:SD	4:A:233[B]:XRA:H21	2.05	0.96
1:A:195:ALA:HB1	1:A:196:SER:CA	2.02	0.90
1:B:85:THR:HG22	5:B:356:HOH:O	1.71	0.89
1:A:195:ALA:CB	1:A:196:SER:HA	2.05	0.85
1:A:187:GLN:HE21	1:A:210:ARG:HH11	1.36	0.73
1:B:154:MET:CE	4:B:233[B]:XRA:H27	2.20	0.70
1:A:161:ASN:HD21	4:A:233[A]:XRA:C12	2.10	0.64
1:A:187:GLN:NE2	1:A:210:ARG:HH11	1.97	0.62
4:A:233[B]:XRA:C27	4:A:233[B]:XRA:H20A	2.30	0.62
1:B:154:MET:HE2	4:B:233[B]:XRA:H27	1.82	0.61
1:B:153:GLU:HG3	5:B:331:HOH:O	2.03	0.58
1:B:169:TRP:HB3	1:B:170:PRO:HD3	1.91	0.53
4:B:233[A]:XRA:H20	5:B:351:HOH:O	2.09	0.52
1:B:187:GLN:HE21	1:B:210:ARG:HH11	1.56	0.52
1:B:154:MET:HE1	4:B:233[B]:XRA:H27	1.92	0.50
1:A:167:PHE:O	1:A:170:PRO:HD2	2.12	0.50
1:A:172:GLN:HE22	1:A:186:PRO:HD3	1.76	0.50
1:A:161:ASN:ND2	4:A:233[A]:XRA:H12	2.26	0.50
4:A:233[B]:XRA:H20A	4:A:233[B]:XRA:H27	1.94	0.49
3:A:232:FAD:O4	4:A:233[A]:XRA:H14A	2.12	0.49
3:A:232:FAD:H1'2	4:A:233[B]:XRA:H12A	1.94	0.49
1:A:197:GLU:HG2	1:A:200:ARG:HH12	1.78	0.49
1:A:161:ASN:ND2	4:A:233[A]:XRA:C12	2.76	0.48
1:B:141:LEU:HD23	1:B:182:LYS:HB2	1.95	0.48
3:B:232:FAD:O4	4:B:233[A]:XRA:H14A	2.14	0.48
1:A:197:GLU:HG2	1:A:200:ARG:NH1	2.29	0.48
1:A:191:ALA:HB1	1:A:194:ILE:HG12	1.96	0.47
1:B:165:ARG:HA	1:B:168:LEU:HD12	1.97	0.47
1:A:154:MET:SD	4:A:233[B]:XRA:H17A	2.55	0.47
1:A:195:ALA:HB1	1:A:196:SER:C	2.35	0.47
1:B:198:GLU:H	1:B:198:GLU:CD	2.19	0.46
1:B:92:ARG:HD2	5:B:437:HOH:O	2.16	0.46
1:A:141:LEU:HD23	1:A:182:LYS:HB2	1.99	0.45
1:B:172:GLN:HE22	1:B:186:PRO:HD3	1.82	0.45
1:B:73:GLU:HG2	5:B:313:HOH:O	2.15	0.45
1:B:161:ASN:OD1	4:B:233[A]:XRA:H12	2.18	0.43

Continued on next page...

Continued from previous page...

Atom-1	Atom-2	Interatomic distance (Å)	Clash overlap (Å)
1:A:142:ALA:HB2	1:A:181:PHE:CD1	2.55	0.42
1:B:192:PRO:O	1:B:200:ARG:HD3	2.19	0.41
4:B:233[A]:XRA:C20	5:B:351:HOH:O	2.66	0.41
1:B:106:PHE:HE1	4:B:233[B]:XRA:H12	1.86	0.41
1:A:4:LYS:HG2	1:A:35:THR:HB	2.03	0.40
1:A:149:GLY:HA3	4:A:233[A]:XRA:H17A	2.03	0.40
1:B:4:LYS:HG2	1:B:35:THR:HB	2.03	0.40

There are no symmetry-related clashes.

5.3 Torsion angles [i](#)

5.3.1 Protein backbone [i](#)

In the following table, the Percentiles column shows the percent Ramachandran outliers of the chain as a percentile score with respect to all X-ray entries followed by that with respect to entries of similar resolution.

The Analysed column shows the number of residues for which the backbone conformation was analysed, and the total number of residues.

Mol	Chain	Analysed	Favoured	Allowed	Outliers	Percentiles	
1	A	225/231 (97%)	217 (96%)	8 (4%)	0	100	100
1	B	226/231 (98%)	219 (97%)	7 (3%)	0	100	100
All	All	451/462 (98%)	436 (97%)	15 (3%)	0	100	100

There are no Ramachandran outliers to report.

5.3.2 Protein sidechains [i](#)

In the following table, the Percentiles column shows the percent sidechain outliers of the chain as a percentile score with respect to all X-ray entries followed by that with respect to entries of similar resolution.

The Analysed column shows the number of residues for which the sidechain conformation was analysed, and the total number of residues.

Mol	Chain	Analysed	Rotameric	Outliers	Percentiles	
1	A	193/195 (99%)	192 (100%)	1 (0%)	92	90

Continued on next page...

Continued from previous page...

Mol	Chain	Analysed	Rotameric	Outliers	Percentiles	
1	B	193/195 (99%)	191 (99%)	2 (1%)	82	76
All	All	386/390 (99%)	383 (99%)	3 (1%)	86	82

All (3) residues with a non-rotameric sidechain are listed below:

Mol	Chain	Res	Type
1	A	160	VAL
1	B	153	GLU
1	B	160	VAL

Some sidechains can be flipped to improve hydrogen bonding and reduce clashes. All (6) such sidechains are listed below:

Mol	Chain	Res	Type
1	A	172	GLN
1	A	187	GLN
1	A	212	GLN
1	B	161	ASN
1	B	172	GLN
1	B	187	GLN

5.3.3 RNA [i](#)

There are no RNA molecules in this entry.

5.4 Non-standard residues in protein, DNA, RNA chains [i](#)

There are no non-standard protein/DNA/RNA residues in this entry.

5.5 Carbohydrates [i](#)

There are no carbohydrates in this entry.

5.6 Ligand geometry [i](#)

Of 8 ligands modelled in this entry, 2 are monoatomic - leaving 6 for Mogul analysis.

In the following table, the Counts columns list the number of bonds (or angles) for which Mogul statistics could be retrieved, the number of bonds (or angles) that are observed in the model and

the number of bonds (or angles) that are defined in the chemical component dictionary. The Link column lists molecule types, if any, to which the group is linked. The Z score for a bond length (or angle) is the number of standard deviations the observed value is removed from the expected value. A bond length (or angle) with $|Z| > 2$ is considered an outlier worth inspection. RMSZ is the root-mean-square of all Z scores of the bond lengths (or angles).

Mol	Type	Chain	Res	Link	Bond lengths			Bond angles		
					Counts	RMSZ	# Z > 2	Counts	RMSZ	# Z > 2
3	FAD	A	232	-	48,58,58	1.30	7 (14%)	54,89,89	2.27	9 (16%)
4	XRA	A	233[A]	-	27,31,31	1.78	6 (22%)	36,44,44	2.23	15 (41%)
4	XRA	A	233[B]	-	27,31,31	1.70	4 (14%)	36,44,44	2.39	13 (36%)
3	FAD	B	232	-	48,58,58	1.30	5 (10%)	54,89,89	2.24	11 (20%)
4	XRA	B	233[A]	-	27,31,31	1.98	5 (18%)	36,44,44	2.49	12 (33%)
4	XRA	B	233[B]	-	27,31,31	1.77	4 (14%)	36,44,44	2.20	14 (38%)

In the following table, the Chirals column lists the number of chiral outliers, the number of chiral centers analysed, the number of these observed in the model and the number defined in the chemical component dictionary. Similar counts are reported in the Torsion and Rings columns. '-' means no outliers of that kind were identified.

Mol	Type	Chain	Res	Link	Chirals	Torsions	Rings
3	FAD	A	232	-	-	0/30/50/50	0/6/6/6
4	XRA	A	233[A]	-	-	0/12/26/26	0/3/4/4
4	XRA	A	233[B]	-	-	0/12/26/26	0/3/4/4
3	FAD	B	232	-	-	0/30/50/50	0/6/6/6
4	XRA	B	233[A]	-	-	0/12/26/26	0/3/4/4
4	XRA	B	233[B]	-	-	0/12/26/26	0/3/4/4

All (31) bond length outliers are listed below:

Mol	Chain	Res	Type	Atoms	Z	Observed(Å)	Ideal(Å)
4	A	233[A]	XRA	C7-C2	-2.01	1.38	1.41
4	A	233[A]	XRA	C10-C9	2.12	1.40	1.36
3	A	232	FAD	C10-N1	2.16	1.39	1.35
4	A	233[B]	XRA	C6-N4	2.17	1.39	1.35
3	B	232	FAD	C2A-N1A	2.25	1.38	1.33
3	A	232	FAD	C2A-N1A	2.36	1.38	1.33
3	B	232	FAD	C10-N1	2.38	1.39	1.35
4	B	233[A]	XRA	C10-C9	2.49	1.41	1.36
3	A	232	FAD	C1'-N10	2.51	1.51	1.48
3	A	232	FAD	C5X-N5	2.59	1.39	1.35
4	A	233[A]	XRA	C6-N4	2.60	1.40	1.35
4	B	233[B]	XRA	C6-N4	2.87	1.41	1.35

Continued on next page...

Continued from previous page...

Mol	Chain	Res	Type	Atoms	Z	Observed(Å)	Ideal(Å)
4	B	233[A]	XRA	C6-N4	2.96	1.41	1.35
3	A	232	FAD	C2A-N3A	3.54	1.38	1.32
3	A	232	FAD	C4-N3	3.59	1.39	1.33
3	B	232	FAD	C2A-N3A	3.62	1.38	1.32
3	A	232	FAD	C4X-N5	3.64	1.39	1.33
3	B	232	FAD	C4X-N5	3.69	1.39	1.33
4	B	233[A]	XRA	C3-C2	3.80	1.48	1.42
4	A	233[B]	XRA	C3-C2	4.05	1.48	1.42
4	A	233[A]	XRA	C3-C2	4.11	1.48	1.42
4	A	233[B]	XRA	C9-C8	4.12	1.49	1.40
3	B	232	FAD	C4-N3	4.14	1.40	1.33
4	B	233[B]	XRA	C3-C2	4.15	1.49	1.42
4	B	233[A]	XRA	C9-C8	4.25	1.49	1.40
4	B	233[B]	XRA	C9-C8	4.41	1.50	1.40
4	A	233[A]	XRA	C9-C8	4.55	1.50	1.40
4	A	233[B]	XRA	C4-C3	4.69	1.48	1.45
4	B	233[B]	XRA	C4-C3	4.78	1.48	1.45
4	A	233[A]	XRA	C4-C3	4.91	1.48	1.45
4	B	233[A]	XRA	C4-C3	6.45	1.49	1.45

All (74) bond angle outliers are listed below:

Mol	Chain	Res	Type	Atoms	Z	Observed(°)	Ideal(°)
3	A	232	FAD	N3A-C2A-N1A	-12.25	119.52	128.89
3	B	232	FAD	N3A-C2A-N1A	-11.97	119.73	128.89
4	A	233[A]	XRA	O1-C8-C7	-5.30	118.15	125.25
4	A	233[B]	XRA	C20-C21-N4	-5.16	100.40	110.63
4	A	233[B]	XRA	C18-C17-N4	-4.88	100.95	110.63
4	B	233[A]	XRA	O1-C8-C7	-4.72	118.92	125.25
4	A	233[B]	XRA	O2-C9-C10	-4.70	118.96	125.25
4	B	233[A]	XRA	C18-C17-N4	-4.34	102.03	110.63
4	A	233[B]	XRA	C3-C2-N1	-4.24	118.76	122.90
4	B	233[B]	XRA	C3-C2-N1	-4.15	118.85	122.90
4	B	233[B]	XRA	O2-C9-C10	-4.00	119.89	125.25
4	B	233[A]	XRA	C3-C2-N1	-3.79	119.20	122.90
4	B	233[A]	XRA	C17-C18-N5	-3.69	102.08	110.49
4	B	233[B]	XRA	O1-C8-C7	-3.64	120.37	125.25
4	B	233[B]	XRA	C20-C21-N4	-3.60	103.49	110.63
4	A	233[B]	XRA	O1-C8-C7	-3.58	120.46	125.25
4	A	233[A]	XRA	C18-C17-N4	-3.57	103.54	110.63
4	B	233[A]	XRA	C17-N4-C6	-3.47	116.35	121.81
4	B	233[B]	XRA	C10-C3-C4	-3.41	121.96	124.74

Continued on next page...

Continued from previous page...

Mol	Chain	Res	Type	Atoms	Z	Observed(°)	Ideal(°)
4	A	233[A]	XRA	C3-C2-N1	-3.23	119.75	122.90
3	A	232	FAD	C1B-N9A-C4A	-3.17	122.15	126.94
4	B	233[A]	XRA	N1-C6-N4	-3.09	113.60	117.08
4	B	233[B]	XRA	C18-C17-N4	-3.01	104.66	110.63
3	A	232	FAD	P-O3P-PA	-3.01	124.28	132.73
4	A	233[B]	XRA	C10-C3-C4	-2.99	122.31	124.74
3	A	232	FAD	C4X-C4-N3	-2.70	119.89	123.59
4	B	233[B]	XRA	N1-C6-N2	-2.67	121.87	126.36
3	B	232	FAD	P-O3P-PA	-2.61	125.41	132.73
3	B	232	FAD	C1B-N9A-C4A	-2.58	123.04	126.94
4	A	233[A]	XRA	N1-C6-N2	-2.53	122.10	126.36
3	A	232	FAD	C4B-O4B-C1B	-2.52	106.95	109.72
4	B	233[A]	XRA	N1-C6-N2	-2.50	122.15	126.36
4	A	233[A]	XRA	C20-C21-N4	-2.29	106.08	110.63
3	B	232	FAD	C4A-C5A-N7A	-2.29	107.37	109.48
3	B	232	FAD	C4X-C4-N3	-2.26	120.50	123.59
3	A	232	FAD	O3P-PA-O5B	-2.21	97.08	102.94
4	A	233[A]	XRA	C10-C3-C4	-2.14	123.00	124.74
4	A	233[A]	XRA	C17-C18-N5	-2.09	105.73	110.49
4	A	233[A]	XRA	O2-C9-C10	-2.01	122.55	125.25
3	B	232	FAD	C4-C4X-C10	-2.00	118.66	119.94
4	B	233[B]	XRA	C12-O1-C8	2.02	120.60	117.54
4	B	233[B]	XRA	C14-O2-C9	2.16	120.82	117.54
4	A	233[A]	XRA	O2-C9-C8	2.30	118.67	115.40
3	A	232	FAD	C4-C4X-N5	2.32	121.54	118.72
4	A	233[A]	XRA	C20-N5-C18	2.39	116.99	112.56
3	B	232	FAD	O2A-PA-O3P	2.45	116.20	105.09
4	A	233[A]	XRA	N2-C6-N4	2.58	119.97	117.08
3	B	232	FAD	C4-C4X-N5	2.63	121.91	118.72
4	B	233[B]	XRA	C21-N4-C17	2.66	117.18	111.59
4	A	233[B]	XRA	C12-O1-C8	2.72	121.67	117.54
4	A	233[B]	XRA	C4-C3-C2	2.76	117.43	115.78
4	B	233[B]	XRA	O1-C8-C9	2.90	119.53	115.40
3	B	232	FAD	C4X-N5-C5X	2.93	120.13	116.76
3	A	232	FAD	C4X-N5-C5X	2.98	120.19	116.76
4	A	233[B]	XRA	O2-C9-C8	3.07	119.78	115.40
4	B	233[B]	XRA	O2-C9-C8	3.15	119.89	115.40
4	B	233[A]	XRA	C6-N2-C4	3.15	121.22	115.75
4	A	233[B]	XRA	C21-N4-C17	3.21	118.33	111.59
3	B	232	FAD	O4B-C1B-N9A	3.25	114.90	108.10
4	A	233[B]	XRA	O1-C8-C9	3.35	120.18	115.40
4	B	233[A]	XRA	C21-N4-C17	3.58	119.10	111.59

Continued on next page...

Continued from previous page...

Mol	Chain	Res	Type	Atoms	Z	Observed(°)	Ideal(°)
4	B	233[B]	XRA	C20-N5-C18	3.68	119.38	112.56
4	A	233[B]	XRA	C6-N2-C4	3.70	122.16	115.75
4	A	233[B]	XRA	C20-N5-C18	3.71	119.44	112.56
4	B	233[A]	XRA	O1-C8-C9	3.81	120.83	115.40
4	A	233[A]	XRA	C6-N2-C4	3.82	122.37	115.75
4	A	233[A]	XRA	O1-C8-C9	3.84	120.88	115.40
4	A	233[A]	XRA	C21-N4-C17	3.89	119.77	111.59
4	B	233[B]	XRA	C6-N2-C4	3.99	122.67	115.75
4	B	233[A]	XRA	C14-O2-C9	4.30	124.07	117.54
4	A	233[A]	XRA	C14-O2-C9	5.02	125.15	117.54
3	B	232	FAD	C4-N3-C2	5.41	119.92	115.25
3	A	232	FAD	C4-N3-C2	5.88	120.33	115.25
4	B	233[A]	XRA	N2-C6-N4	6.39	124.23	117.08

There are no chirality outliers.

There are no torsion outliers.

There are no ring outliers.

6 monomers are involved in 18 short contacts:

Mol	Chain	Res	Type	Clashes	Symm-Clashes
3	A	232	FAD	2	0
4	A	233[A]	XRA	5	0
4	A	233[B]	XRA	5	0
3	B	232	FAD	1	0
4	B	233[A]	XRA	4	0
4	B	233[B]	XRA	4	0

5.7 Other polymers [i](#)

There are no such residues in this entry.

5.8 Polymer linkage issues [i](#)

There are no chain breaks in this entry.

6 Fit of model and data ⓘ

6.1 Protein, DNA and RNA chains ⓘ

In the following table, the column labelled ‘#RSRZ> 2’ contains the number (and percentage) of RSRZ outliers, followed by percent RSRZ outliers for the chain as percentile scores relative to all X-ray entries and entries of similar resolution. The OWAB column contains the minimum, median, 95th percentile and maximum values of the occupancy-weighted average B-factor per residue. The column labelled ‘Q< 0.9’ lists the number of (and percentage) of residues with an average occupancy less than 0.9.

Mol	Chain	Analysed	<RSRZ>	#RSRZ>2	OWAB(Å ²)	Q<0.9
1	A	227/231 (98%)	0.52	23 (10%) 9 8	8, 23, 43, 50	0
1	B	228/231 (98%)	-0.03	6 (2%) 59 57	8, 18, 35, 44	0
All	All	455/462 (98%)	0.24	29 (6%) 23 21	8, 20, 41, 50	0

All (29) RSRZ outliers are listed below:

Mol	Chain	Res	Type	RSRZ
1	A	195	ALA	5.3
1	A	129	PRO	4.9
1	A	198	GLU	4.3
1	B	63	GLU	4.2
1	A	57	GLY	4.0
1	A	128	ILE	3.8
1	A	197	GLU	3.8
1	A	196	SER	3.5
1	A	153	GLU	3.2
1	A	130	GLY	3.2
1	A	63	GLU	3.0
1	B	157	LYS	3.0
1	A	201	LYS	2.9
1	A	199	GLU	2.9
1	A	133	ASP	2.9
1	A	160	VAL	2.8
1	A	194	ILE	2.8
1	A	59	LEU	2.6
1	B	198	GLU	2.6
1	A	58	THR	2.6
1	A	127	ASP	2.5
1	A	158	THR	2.5
1	B	153	GLU	2.5
1	A	225	HIS	2.5

Continued on next page...

Continued from previous page...

Mol	Chain	Res	Type	RSRZ
1	A	62	PRO	2.4
1	B	158	THR	2.3
1	A	205	ALA	2.3
1	B	156	THR	2.3
1	A	131	PHE	2.1

6.2 Non-standard residues in protein, DNA, RNA chains [i](#)

There are no non-standard protein/DNA/RNA residues in this entry.

6.3 Carbohydrates [i](#)

There are no carbohydrates in this entry.

6.4 Ligands [i](#)

In the following table, the Atoms column lists the number of modelled atoms in the group and the number defined in the chemical component dictionary. LLDF column lists the quality of electron density of the group with respect to its neighbouring residues in protein, DNA or RNA chains. The B-factors column lists the minimum, median, 95th percentile and maximum values of B factors of atoms in the group. The column labelled 'Q < 0.9' lists the number of atoms with occupancy less than 0.9.

Mol	Type	Chain	Res	Atoms	RSCC	RSR	LLDF	B-factors(Å ²)	Q<0.9
4	XRA	B	233[A]	28/28	0.70	0.34	8.97	28,31,37,38	28
4	XRA	B	233[B]	28/28	0.70	0.34	4.74	37,39,43,43	28
4	XRA	A	233[B]	28/28	0.80	0.27	3.30	16,23,30,30	28
4	XRA	A	233[A]	28/28	0.80	0.27	3.14	24,28,36,36	28
3	FAD	A	232	53/53	0.93	0.13	-0.17	12,19,40,41	0
3	FAD	B	232	53/53	0.95	0.10	-0.30	13,17,32,34	0
2	ZN	A	231	1/1	0.98	0.05	-4.18	29,29,29,29	0
2	ZN	B	231	1/1	0.99	0.03	-6.73	19,19,19,19	0

6.5 Other polymers [i](#)

There are no such residues in this entry.