



wwPDB X-ray Structure Validation Summary Report ⓘ

Jan 31, 2016 – 09:27 PM GMT

PDB ID : 1P33
Title : Pteridine reductase from Leishmania tarentolae complex with NADPH and MTX
Authors : Zhao, H.; Bray, T.; Ouellette, M.; Zhao, M.; Ferre, R.A.; Matthews, D.; Whiteley, J.M.; Varughese, K.I.
Deposited on : 2003-04-16
Resolution : 2.86 Å(reported)

This is a wwPDB X-ray Structure Validation Summary Report for a publicly released PDB entry.
We welcome your comments at validation@mail.wwpdb.org
A user guide is available at
<http://wwpdb.org/validation/2016/XrayValidationReportHelp>
with specific help available everywhere you see the ⓘ symbol.

The following versions of software and data (see [references ⓘ](#)) were used in the production of this report:

MolProbity : 4.02b-467
Mogul : 1.7 (RC4), CSD as536be (2015)
Xtriage (Phenix) : 1.9-1692
EDS : rb-20026688
Percentile statistics : 20151230.v01 (using entries in the PDB archive December 30th 2015)
Refmac : 5.8.0135
CCP4 : 6.5.0
Ideal geometry (proteins) : Engh & Huber (2001)
Ideal geometry (DNA, RNA) : Parkinson et al. (1996)
Validation Pipeline (wwPDB-VP) : trunk26865

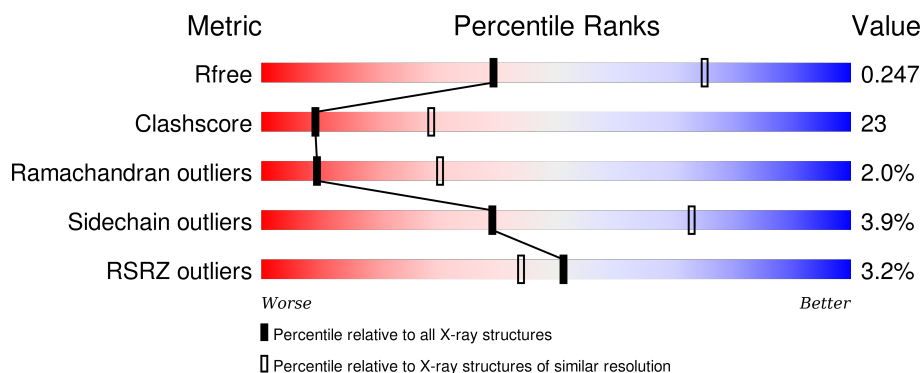
1 Overall quality at a glance

The following experimental techniques were used to determine the structure:

X-RAY DIFFRACTION

The reported resolution of this entry is 2.86 Å.

Percentile scores (ranging between 0-100) for global validation metrics of the entry are shown in the following graphic. The table shows the number of entries on which the scores are based.



Metric	Whole archive (#Entries)	Similar resolution (#Entries, resolution range(Å))
R_{free}	91344	2228 (2.90-2.82)
Clashscore	102246	2499 (2.90-2.82)
Ramachandran outliers	100387	2439 (2.90-2.82)
Sidechain outliers	100360	2442 (2.90-2.82)
RSRZ outliers	91569	2236 (2.90-2.82)

The table below summarises the geometric issues observed across the polymeric chains and their fit to the electron density. The red, orange, yellow and green segments on the lower bar indicate the fraction of residues that contain outliers for ≥ 3 , 2, 1 and 0 types of geometric quality criteria. A grey segment represents the fraction of residues that are not modelled. The numeric value for each fraction is indicated below the corresponding segment, with a dot representing fractions $\leq 5\%$. The upper red bar (where present) indicates the fraction of residues that have poor fit to the electron density. The numeric value is given above the bar.

Mol	Chain	Length	Quality of chain
1	A	289	<div> <div>8%</div> <div>54% 34% 8%</div> </div>
1	B	289	<div> <div>7%</div> <div>57% 33% 7%</div> </div>
1	C	289	<div> <div>7%</div> <div>61% 28% 7%</div> </div>
1	D	289	<div> <div>8%</div> <div>53% 38% 7%</div> </div>

The following table lists non-polymeric compounds, carbohydrate monomers and non-standard

residues in protein, DNA, RNA chains that are outliers for geometric or electron-density-fit criteria:

Mol	Type	Chain	Res	Chirality	Geometry	Clashes	Electron density
2	NDP	A	300	X	-	-	-
2	NDP	B	301	X	-	-	-
2	NDP	D	303	X	-	-	-
3	MTX	A	351	-	-	-	X
3	MTX	B	352	-	-	X	X
3	MTX	C	353	-	-	X	X
3	MTX	D	354	-	-	-	X

2 Entry composition [i](#)

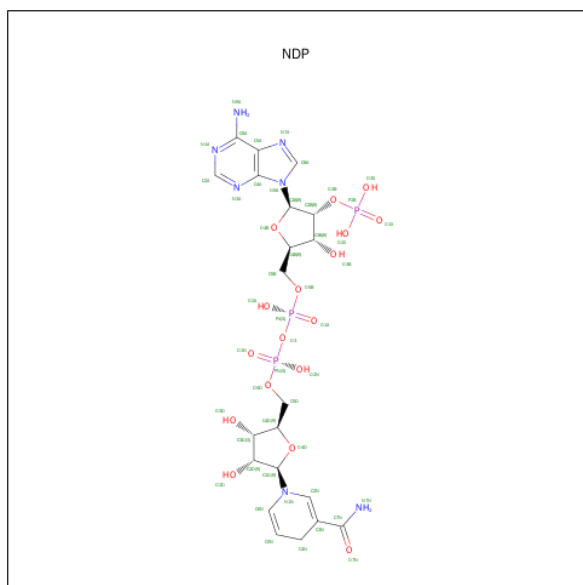
There are 4 unique types of molecules in this entry. The entry contains 8564 atoms, of which 0 are hydrogens and 0 are deuteriums.

In the tables below, the ZeroOcc column contains the number of atoms modelled with zero occupancy, the AltConf column contains the number of residues with at least one atom in alternate conformation and the Trace column contains the number of residues modelled with at most 2 atoms.

- Molecule 1 is a protein called Pteridine reductase 1.

Mol	Chain	Residues	Atoms					ZeroOcc	AltConf	Trace
1	A	267	Total	C	N	O	S	0	0	0
			2009	1260	348	389	12			
1	B	269	Total	C	N	O	S	0	0	0
			2023	1270	351	390	12			
1	C	268	Total	C	N	O	S	0	0	0
			2017	1267	350	388	12			
1	D	268	Total	C	N	O	S	0	0	0
			2018	1266	350	390	12			

- Molecule 2 is NADPH DIHYDRO-NICOTINAMIDE-ADENINE-DINUCLEOTIDE PHOSPHATE (three-letter code: NDP) (formula: $C_{21}H_{30}N_7O_{17}P_3$).



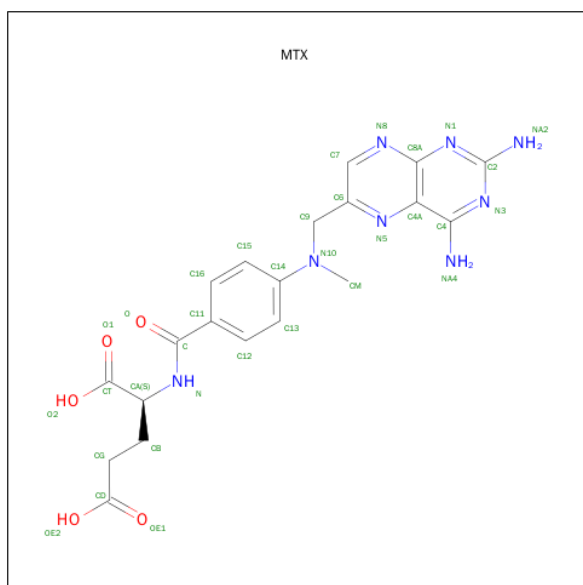
Mol	Chain	Residues	Atoms					ZeroOcc	AltConf
2	A	1	Total	C	N	O	P	0	0
			48	21	7	17	3		
2	B	1	Total	C	N	O	P	0	0
			48	21	7	17	3		

Continued on next page...

Continued from previous page...

Mol	Chain	Residues	Atoms				ZeroOcc	AltConf
2	C	1	Total	C	N	O	P	
			48	21	7	17	3	
2	D	1	Total	C	N	O	P	
			48	21	7	17	3	

- Molecule 3 is METHOTREXATE (three-letter code: MTX) (formula: C₂₀H₂₂N₈O₅).



Mol	Chain	Residues	Atoms				ZeroOcc	AltConf
3	A	1	Total	C	N	O		
			33	20	8	5		
3	B	1	Total	C	N	O		
			33	20	8	5		
3	C	1	Total	C	N	O		
			33	20	8	5		
3	D	1	Total	C	N	O		
			33	20	8	5		

- Molecule 4 is water.

Mol	Chain	Residues	Atoms		ZeroOcc	AltConf
4	A	52	Total	O		
			52	52		
4	B	53	Total	O		
			53	53		
4	C	42	Total	O		
			42	42		

Continued on next page...

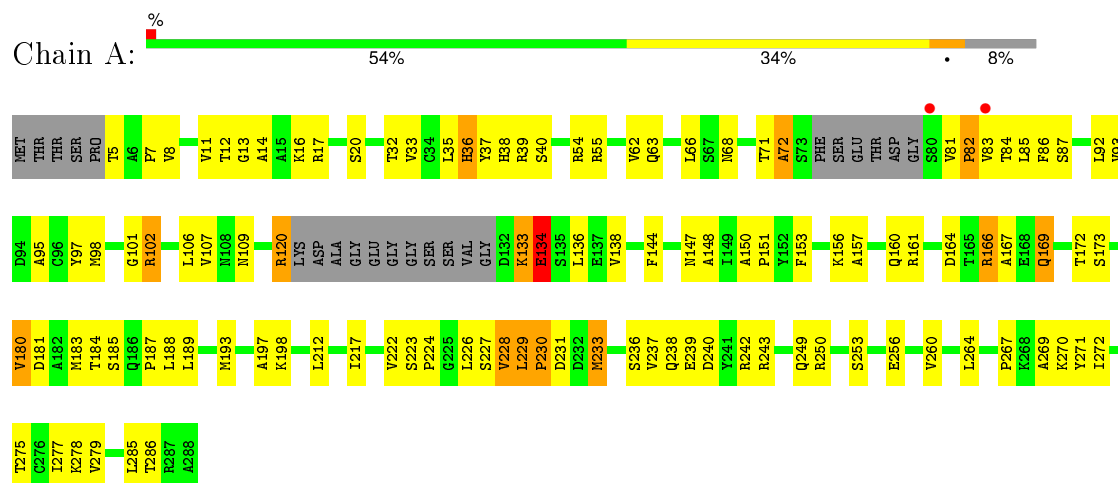
Continued from previous page...

Mol	Chain	Residues	Atoms		ZeroOcc	AltConf
4	D	26	Total	O	0	0
			26	26		

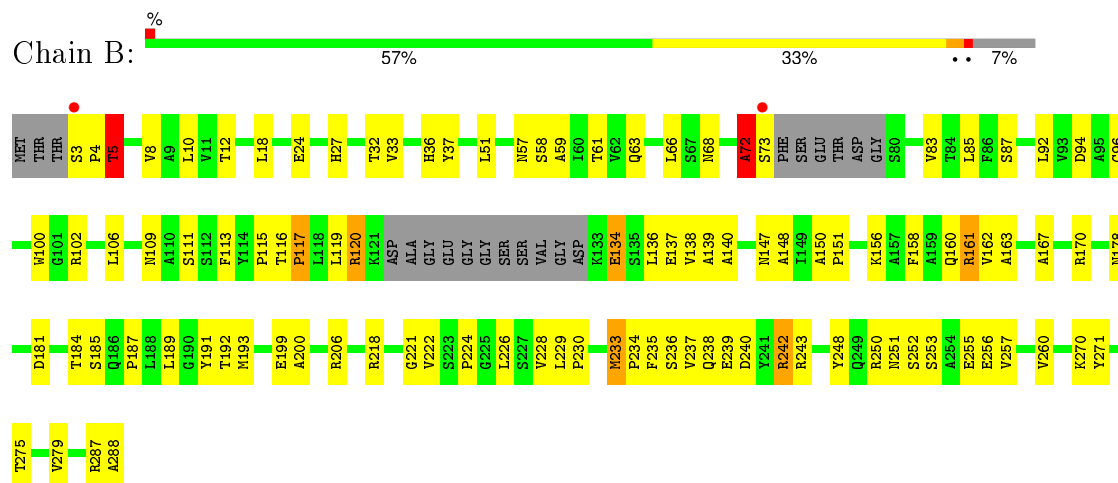
3 Residue-property plots

These plots are drawn for all protein, RNA and DNA chains in the entry. The first graphic for a chain summarises the proportions of errors displayed in the second graphic. The second graphic shows the sequence view annotated by issues in geometry and electron density. Residues are color-coded according to the number of geometric quality criteria for which they contain at least one outlier: green = 0, yellow = 1, orange = 2 and red = 3 or more. A red dot above a residue indicates a poor fit to the electron density ($RSRZ > 2$). Stretches of 2 or more consecutive residues without any outlier are shown as a green connector. Residues present in the sample, but not in the model, are shown in grey.

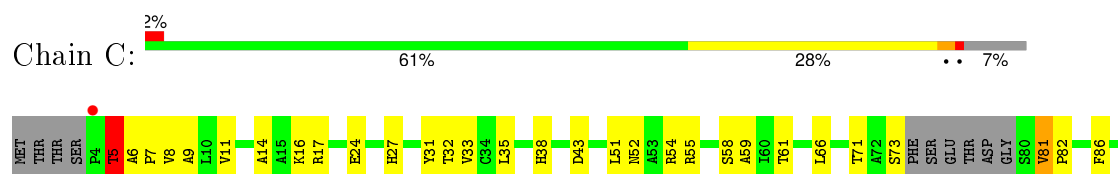
• Molecule 1: Pteridine reductase 1

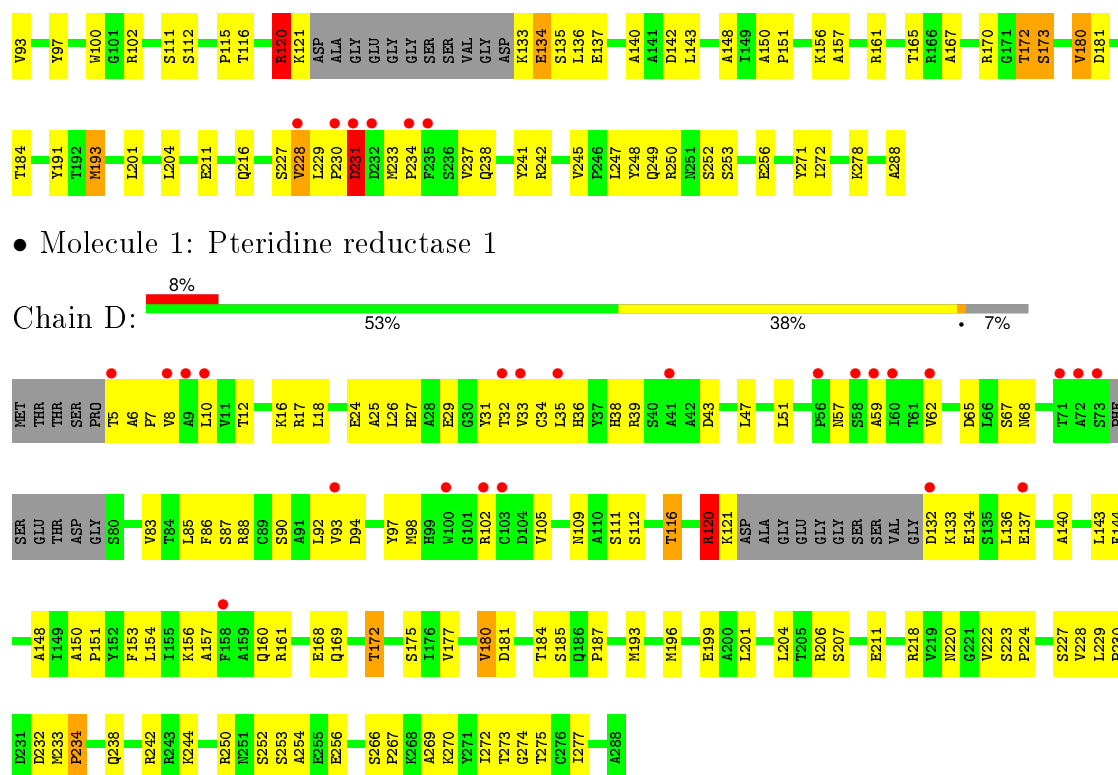


• Molecule 1: Pteridine reductase 1



• Molecule 1: Pteridine reductase 1





• Molecule 1: Pteridine reductase 1

Chain D: 8% 53% 38% 7%

4 Data and refinement statistics

Property	Value	Source
Space group	P 21 21 21	Depositor
Cell constants a, b, c, α , β , γ	91.30Å 96.10Å 195.54Å 90.00° 90.00° 90.00°	Depositor
Resolution (Å)	19.98 – 2.86 82.73 – 2.79	Depositor EDS
% Data completeness (in resolution range)	94.6 (19.98-2.86) 93.8 (82.73-2.79)	Depositor EDS
R_{merge}	0.07	Depositor
R_{sym}	(Not available)	Depositor
$\langle I/\sigma(I) \rangle$ ¹	1.29 (at 2.77Å)	Xtriage
Refinement program	CNS 1.0	Depositor
R, R_{free}	0.213 , 0.251 0.214 , 0.247	Depositor DCC
R_{free} test set	3915 reflections (11.17%)	DCC
Wilson B-factor (Å ²)	45.1	Xtriage
Anisotropy	0.723	Xtriage
Bulk solvent k_{sol} (e/Å ³), B_{sol} (Å ²)	0.34 , 45.8	EDS
Estimated twinning fraction	0.026 for k,h,-l	Xtriage
L-test for twinning ²	$\langle L \rangle = 0.47$, $\langle L^2 \rangle = 0.30$	Xtriage
Outliers	0 of 40887 reflections	Xtriage
F_o, F_c correlation	0.91	EDS
Total number of atoms	8564	wwPDB-VP
Average B, all atoms (Å ²)	46.0	wwPDB-VP

Xtriage's analysis on translational NCS is as follows: *The largest off-origin peak in the Patterson function is 3.07% of the height of the origin peak. No significant pseudotranslation is detected.*

¹Intensities estimated from amplitudes.

²Theoretical values of $\langle |L| \rangle$, $\langle L^2 \rangle$ for acentric reflections are 0.5, 0.375 respectively for untwinned datasets, and 0.333, 0.2 for perfectly twinned datasets.

5 Model quality

5.1 Standard geometry

Bond lengths and bond angles in the following residue types are not validated in this section: NDP, MTX

The Z score for a bond length (or angle) is the number of standard deviations the observed value is removed from the expected value. A bond length (or angle) with $|Z| > 5$ is considered an outlier worth inspection. RMSZ is the root-mean-square of all Z scores of the bond lengths (or angles).

Mol	Chain	Bond lengths		Bond angles	
		RMSZ	$\# Z > 5$	RMSZ	$\# Z > 5$
1	A	0.41	0/2043	0.71	4/2777 (0.1%)
1	B	0.48	1/2058 (0.0%)	0.73	3/2797 (0.1%)
1	C	0.40	0/2052	0.66	2/2788 (0.1%)
1	D	0.37	0/2052	0.64	1/2788 (0.0%)
All	All	0.42	1/8205 (0.0%)	0.69	10/11150 (0.1%)

Chiral center outliers are detected by calculating the chiral volume of a chiral center and verifying if the center is modelled as a planar moiety or with the opposite hand. A planarity outlier is detected by checking planarity of atoms in a peptide group, atoms in a mainchain group or atoms of a sidechain that are expected to be planar.

Mol	Chain	#Chirality outliers	#Planarity outliers
1	B	0	1

All (1) bond length outliers are listed below:

Mol	Chain	Res	Type	Atoms	Z	Observed(Å)	Ideal(Å)
1	B	72	ALA	C-N	-8.48	1.14	1.34

The worst 5 of 10 bond angle outliers are listed below:

Mol	Chain	Res	Type	Atoms	Z	Observed(°)	Ideal(°)
1	B	72	ALA	O-C-N	-13.81	100.60	122.70
1	A	134	GLU	N-CA-C	-8.85	87.10	111.00
1	A	72	ALA	N-CA-C	6.61	128.83	111.00
1	C	5	THR	N-CA-C	6.13	127.56	111.00
1	B	134	GLU	N-CA-C	-5.97	94.88	111.00

There are no chirality outliers.

All (1) planarity outliers are listed below:

Mol	Chain	Res	Type	Group
1	B	72	ALA	Mainchain

5.2 Too-close contacts ⓘ

In the following table, the Non-H and H(model) columns list the number of non-hydrogen atoms and hydrogen atoms in the chain respectively. The H(added) column lists the number of hydrogen atoms added and optimized by MolProbity. The Clashes column lists the number of clashes within the asymmetric unit, whereas Symm-Clashes lists symmetry related clashes.

Mol	Chain	Non-H	H(model)	H(added)	Clashes	Symm-Clashes
1	A	2009	0	2007	98	0
1	B	2023	0	2027	115	0
1	C	2017	0	2024	105	0
1	D	2018	0	2020	104	0
2	A	48	0	25	2	0
2	B	48	0	25	3	0
2	C	48	0	25	8	0
2	D	48	0	25	3	0
3	A	33	0	20	6	0
3	B	33	0	20	11	0
3	C	33	0	20	11	0
3	D	33	0	20	6	0
4	A	52	0	0	1	0
4	B	53	0	0	4	0
4	C	42	0	0	0	0
4	D	26	0	0	1	0
All	All	8564	0	8258	383	0

The all-atom clashscore is defined as the number of clashes found per 1000 atoms (including hydrogen atoms). The all-atom clashscore for this structure is 23.

The worst 5 of 383 close contacts within the same asymmetric unit are listed below, sorted by their clash magnitude.

Atom-1	Atom-2	Interatomic distance (Å)	Clash overlap (Å)
1:B:5:THR:HG22	1:B:102:ARG:HH11	1.18	1.06
1:B:239:GLU:HA	1:B:242:ARG:HG3	1.39	1.03
1:B:5:THR:HG22	1:B:102:ARG:NH1	1.77	0.99
1:B:5:THR:CG2	1:B:102:ARG:HH11	1.80	0.94
1:D:242:ARG:HB2	1:D:250:ARG:HA	1.51	0.92

There are no symmetry-related clashes.

5.3 Torsion angles [i](#)

5.3.1 Protein backbone [i](#)

In the following table, the Percentiles column shows the percent Ramachandran outliers of the chain as a percentile score with respect to all X-ray entries followed by that with respect to entries of similar resolution.

The Analysed column shows the number of residues for which the backbone conformation was analysed, and the total number of residues.

Mol	Chain	Analysed	Favoured	Allowed	Outliers	Percentiles	
1	A	261/289 (90%)	236 (90%)	17 (6%)	8 (3%)	5	18
1	B	263/289 (91%)	235 (89%)	26 (10%)	2 (1%)	24	56
1	C	262/289 (91%)	237 (90%)	18 (7%)	7 (3%)	6	22
1	D	262/289 (91%)	217 (83%)	41 (16%)	4 (2%)	13	38
All	All	1048/1156 (91%)	925 (88%)	102 (10%)	21 (2%)	9	30

5 of 21 Ramachandran outliers are listed below:

Mol	Chain	Res	Type
1	A	72	ALA
1	A	228	VAL
1	A	230	PRO
1	A	231	ASP
1	C	120	ARG

5.3.2 Protein sidechains [i](#)

In the following table, the Percentiles column shows the percent sidechain outliers of the chain as a percentile score with respect to all X-ray entries followed by that with respect to entries of similar resolution.

The Analysed column shows the number of residues for which the sidechain conformation was analysed, and the total number of residues.

Mol	Chain	Analysed	Rotameric	Outliers	Percentiles	
1	A	216/232 (93%)	202 (94%)	14 (6%)	21	49
1	B	218/232 (94%)	210 (96%)	8 (4%)	41	74
1	C	217/232 (94%)	209 (96%)	8 (4%)	41	74
1	D	217/232 (94%)	213 (98%)	4 (2%)	66	89
All	All	868/928 (94%)	834 (96%)	34 (4%)	39	73

5 of 34 residues with a non-rotameric sidechain are listed below:

Mol	Chain	Res	Type
1	B	120	ARG
1	B	240	ASP
1	D	116	THR
1	B	233	MET
1	A	134	GLU

Some sidechains can be flipped to improve hydrogen bonding and reduce clashes. 5 of 12 such sidechains are listed below:

Mol	Chain	Res	Type
1	B	169	GLN
1	B	238	GLN
1	C	186	GLN
1	B	57	ASN
1	C	57	ASN

5.3.3 RNA ⓘ

There are no RNA molecules in this entry.

5.4 Non-standard residues in protein, DNA, RNA chains ⓘ

There are no non-standard protein/DNA/RNA residues in this entry.

5.5 Carbohydrates ⓘ

There are no carbohydrates in this entry.

5.6 Ligand geometry ⓘ

8 ligands are modelled in this entry.

In the following table, the Counts columns list the number of bonds (or angles) for which Mogul statistics could be retrieved, the number of bonds (or angles) that are observed in the model and the number of bonds (or angles) that are defined in the chemical component dictionary. The Link column lists molecule types, if any, to which the group is linked. The Z score for a bond length (or angle) is the number of standard deviations the observed value is removed from the expected value. A bond length (or angle) with $|Z| > 2$ is considered an outlier worth inspection. RMSZ is the root-mean-square of all Z scores of the bond lengths (or angles).

Mol	Type	Chain	Res	Link	Bond lengths			Bond angles		
					Counts	RMSZ	# Z > 2	Counts	RMSZ	# Z > 2
2	NDP	A	300	-	42,52,52	1.67	6 (14%)	55,80,80	3.22	24 (43%)
3	MTX	A	351	-	27,35,35	4.19	16 (59%)	30,49,49	7.04	17 (56%)
2	NDP	B	301	-	42,52,52	1.65	6 (14%)	55,80,80	2.92	24 (43%)
3	MTX	B	352	-	27,35,35	4.52	19 (70%)	30,49,49	6.95	17 (56%)
2	NDP	C	302	-	42,52,52	1.75	8 (19%)	55,80,80	2.58	17 (30%)
3	MTX	C	353	-	27,35,35	4.43	17 (62%)	30,49,49	7.03	17 (56%)
2	NDP	D	303	-	42,52,52	1.64	7 (16%)	55,80,80	2.62	18 (32%)
3	MTX	D	354	-	27,35,35	4.50	19 (70%)	30,49,49	6.93	17 (56%)

In the following table, the Chirals column lists the number of chiral outliers, the number of chiral centers analysed, the number of these observed in the model and the number defined in the chemical component dictionary. Similar counts are reported in the Torsion and Rings columns. '-' means no outliers of that kind were identified.

Mol	Type	Chain	Res	Link	Chirals	Torsions	Rings
2	NDP	A	300	-	1/1/14/17	0/30/77/77	0/5/5/5
3	MTX	A	351	-	-	0/19/25/25	0/3/3/3
2	NDP	B	301	-	1/1/14/17	0/30/77/77	0/5/5/5
3	MTX	B	352	-	-	0/19/25/25	0/3/3/3
2	NDP	C	302	-	-	0/30/77/77	0/5/5/5
3	MTX	C	353	-	-	0/19/25/25	0/3/3/3
2	NDP	D	303	-	1/1/14/17	0/30/77/77	0/5/5/5
3	MTX	D	354	-	-	0/19/25/25	0/3/3/3

The worst 5 of 98 bond length outliers are listed below:

Mol	Chain	Res	Type	Atoms	Z	Observed(Å)	Ideal(Å)
2	D	303	NDP	C4N-C5N	-5.79	1.36	1.49
2	A	300	NDP	C4N-C5N	-5.68	1.36	1.49
2	C	302	NDP	C4N-C5N	-5.49	1.37	1.49
2	B	301	NDP	C4N-C5N	-5.47	1.37	1.49
2	C	302	NDP	PA-O2A	-3.74	1.39	1.54

The worst 5 of 151 bond angle outliers are listed below:

Mol	Chain	Res	Type	Atoms	Z	Observed(°)	Ideal(°)
3	B	352	MTX	CM-N10-C9	-14.36	75.34	114.23
3	D	354	MTX	CM-N10-C9	-14.07	76.13	114.23
3	C	353	MTX	CM-N10-C9	-13.46	77.78	114.23
3	A	351	MTX	CM-N10-C9	-13.22	78.44	114.23

Continued on next page...

Continued from previous page...

Mol	Chain	Res	Type	Atoms	Z	Observed(°)	Ideal(°)
3	B	352	MTX	C9-N10-C14	-12.73	92.25	119.36

All (3) chirality outliers are listed below:

Mol	Chain	Res	Type	Atom
2	B	301	NDP	C4B
2	A	300	NDP	C4B
2	D	303	NDP	C4B

There are no torsion outliers.

There are no ring outliers.

8 monomers are involved in 49 short contacts:

Mol	Chain	Res	Type	Clashes	Symm-Clashes
2	A	300	NDP	2	0
3	A	351	MTX	6	0
2	B	301	NDP	3	0
3	B	352	MTX	11	0
2	C	302	NDP	8	0
3	C	353	MTX	11	0
2	D	303	NDP	3	0
3	D	354	MTX	6	0

5.7 Other polymers [i](#)

There are no such residues in this entry.

5.8 Polymer linkage issues [i](#)

There are no chain breaks in this entry.

6 Fit of model and data [i](#)

6.1 Protein, DNA and RNA chains [i](#)

In the following table, the column labelled ‘#RSRZ> 2’ contains the number (and percentage) of RSRZ outliers, followed by percent RSRZ outliers for the chain as percentile scores relative to all X-ray entries and entries of similar resolution. The OWAB column contains the minimum, median, 95th percentile and maximum values of the occupancy-weighted average B-factor per residue. The column labelled ‘Q< 0.9’ lists the number of (and percentage) of residues with an average occupancy less than 0.9.

Mol	Chain	Analysed	<RSRZ>	#RSRZ>2	OWAB(Å ²)	Q<0.9
1	A	267/289 (92%)	-0.03	2 (0%) 89 88	25, 39, 68, 93	0
1	B	269/289 (93%)	-0.17	2 (0%) 89 88	21, 37, 66, 94	0
1	C	268/289 (92%)	0.22	7 (2%) 59 54	19, 40, 76, 95	0
1	D	268/289 (92%)	0.41	23 (8%) 13 8	28, 52, 85, 99	0
All	All	1072/1156 (92%)	0.11	34 (3%) 51 44	19, 41, 79, 99	0

The worst 5 of 34 RSRZ outliers are listed below:

Mol	Chain	Res	Type	RSRZ
1	B	3	SER	4.2
1	D	8	VAL	4.2
1	D	72	ALA	4.0
1	D	32	THR	4.0
1	D	73	SER	3.9

6.2 Non-standard residues in protein, DNA, RNA chains [i](#)

There are no non-standard protein/DNA/RNA residues in this entry.

6.3 Carbohydrates [i](#)

There are no carbohydrates in this entry.

6.4 Ligands [i](#)

In the following table, the Atoms column lists the number of modelled atoms in the group and the number defined in the chemical component dictionary. LLDF column lists the quality of electron density of the group with respect to its neighbouring residues in protein, DNA or RNA chains. The B-factors column lists the minimum, median, 95th percentile and maximum values of B factors

of atoms in the group. The column labelled 'Q< 0.9' lists the number of atoms with occupancy less than 0.9.

Mol	Type	Chain	Res	Atoms	RSCC	RSR	LLDF	B-factors(\AA^2)	Q<0.9
3	MTX	D	354	33/33	0.67	0.55	14.91	127,135,140,140	0
3	MTX	B	352	33/33	0.68	0.72	12.39	135,141,144,145	0
3	MTX	A	351	33/33	0.67	0.60	7.18	93,113,124,124	0
3	MTX	C	353	33/33	0.62	0.73	5.84	103,114,119,119	0
2	NDP	B	301	48/48	0.93	0.20	0.95	29,40,46,51	0
2	NDP	A	300	48/48	0.93	0.23	0.84	32,35,49,53	0
2	NDP	D	303	48/48	0.91	0.22	0.17	36,56,63,66	0
2	NDP	C	302	48/48	0.93	0.25	0.11	41,49,58,63	0

6.5 Other polymers [i](#)

There are no such residues in this entry.