



Full wwPDB X-ray Structure Validation Report ⓘ

Jul 20, 2016 – 07:58 PM EDT

PDB ID : 1P57
Title : Extracellular domain of human hepsin
Authors : Somoza, J.R.; Ho, J.D.; Luong, C.; Sprengeler, P.A.; Mortara, K.; Shrader, W.D.; Sperandio, D.; Chan, H.; McGrath, M.E.; Katz, B.A.
Deposited on : 2003-04-25
Resolution : 1.75 Å(reported)

This is a Full wwPDB X-ray Structure Validation Report for a publicly released PDB entry.
We welcome your comments at validation@mail.wwpdb.org
A user guide is available at
<http://wwpdb.org/validation/2016/XrayValidationReportHelp>
with specific help available everywhere you see the ⓘ symbol.

The following versions of software and data (see [references ⓘ](#)) were used in the production of this report:

MolProbity : 4.02b-467
Mogul : 1.7.1 (RC1), CSD as537be (2016)
Xtriage (Phenix) : 1.9-1692
EDS : rb-20027790
Percentile statistics : 20151230.v01 (using entries in the PDB archive December 30th 2015)
Refmac : 5.8.0135
CCP4 : 6.5.0
Ideal geometry (proteins) : Engh & Huber (2001)
Ideal geometry (DNA, RNA) : Parkinson et al. (1996)
Validation Pipeline (wwPDB-VP) : rb-20027790

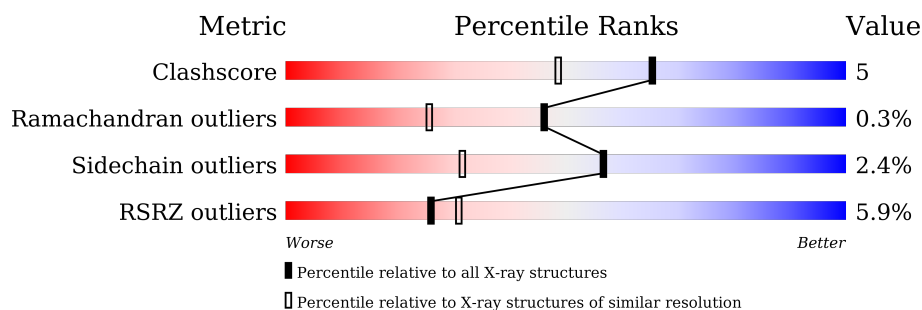
1 Overall quality at a glance

The following experimental techniques were used to determine the structure:

X-RAY DIFFRACTION

The reported resolution of this entry is 1.75 Å.

Percentile scores (ranging between 0-100) for global validation metrics of the entry are shown in the following graphic. The table shows the number of entries on which the scores are based.



Metric	Whole archive (#Entries)	Similar resolution (#Entries, resolution range(Å))
Clashscore	102246	1730 (1.76-1.76)
Ramachandran outliers	100387	1711 (1.76-1.76)
Sidechain outliers	100360	1711 (1.76-1.76)
RSRZ outliers	91569	1610 (1.76-1.76)

The table below summarises the geometric issues observed across the polymeric chains and their fit to the electron density. The red, orange, yellow and green segments on the lower bar indicate the fraction of residues that contain outliers for ≥ 3 , 2, 1 and 0 types of geometric quality criteria. A grey segment represents the fraction of residues that are not modelled. The numeric value for each fraction is indicated below the corresponding segment, with a dot representing fractions $\leq 5\%$. The upper red bar (where present) indicates the fraction of residues that have poor fit to the electron density. The numeric value is given above the bar.

Mol	Chain	Length	Quality of chain
1	A	114	
2	B	255	

2 Entry composition [i](#)

There are 4 unique types of molecules in this entry. The entry contains 6325 atoms, of which 3276 are hydrogens and 0 are deuteriums.

In the tables below, the ZeroOcc column contains the number of atoms modelled with zero occupancy, the AltConf column contains the number of residues with at least one atom in alternate conformation and the Trace column contains the number of residues modelled with at most 2 atoms.

- Molecule 1 is a protein called Serine protease hepsin.

Mol	Chain	Residues	Atoms						ZeroOcc	AltConf	Trace
			Total	C	H	N	O	S			
1	A	110	1703	527	853	158	156	9	0	3	0

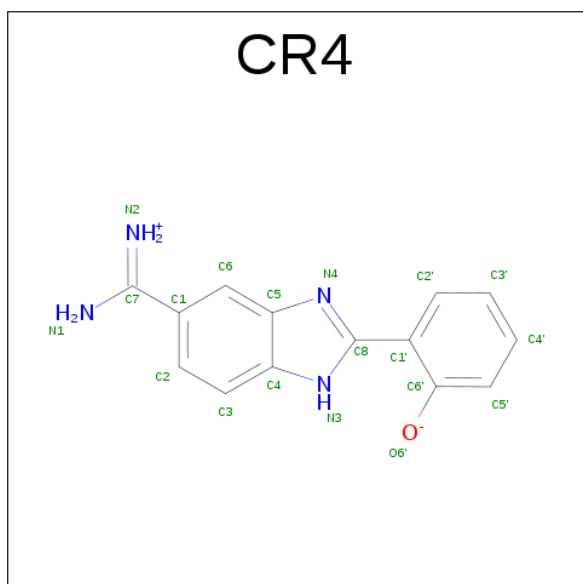
There is a discrepancy between the modelled and reference sequences:

Chain	Residue	Modelled	Actual	Comment	Reference
A	67	ALA	ASN	ENGINEERED	UNP P05981

- Molecule 2 is a protein called Serine protease hepsin.

Mol	Chain	Residues	Atoms						ZeroOcc	AltConf	Trace
			Total	C	H	N	O	S			
2	B	247	3760	1209	1857	335	347	12	0	8	0

- Molecule 3 is 2-{5-[AMINO(IMINIO)METHYL]-1H-BENZIMIDAZOL-2-YL}BENZENOLATE (three-letter code: CR4) (formula: C₁₄H₁₂N₄O).



Mol	Chain	Residues	Atoms					ZeroOcc	AltConf
3	B	1	Total	C	H	N	O	0	0
			31	14	12	4	1		

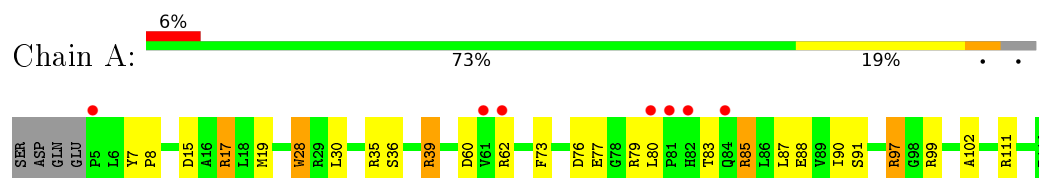
- Molecule 4 is water.

Mol	Chain	Residues	Atoms			ZeroOcc	AltConf
4	A	68	Total	H	O	0	0
			204	136	68		
4	B	209	Total	H	O	0	0
			627	418	209		

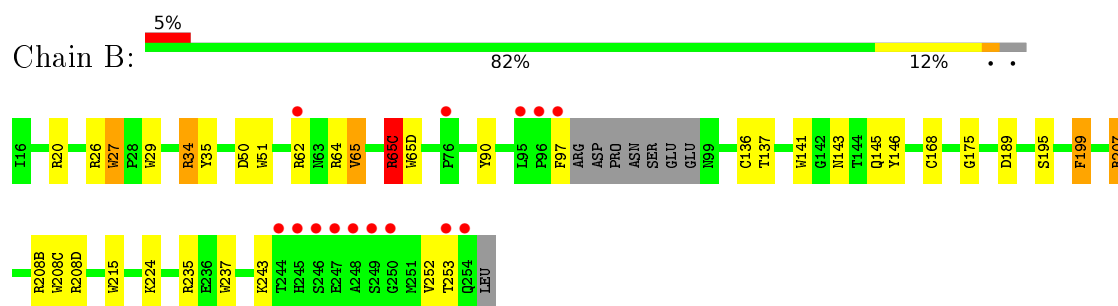
3 Residue-property plots [i](#)

These plots are drawn for all protein, RNA and DNA chains in the entry. The first graphic for a chain summarises the proportions of errors displayed in the second graphic. The second graphic shows the sequence view annotated by issues in geometry and electron density. Residues are color-coded according to the number of geometric quality criteria for which they contain at least one outlier: green = 0, yellow = 1, orange = 2 and red = 3 or more. A red dot above a residue indicates a poor fit to the electron density ($\text{RSRZ} > 2$). Stretches of 2 or more consecutive residues without any outlier are shown as a green connector. Residues present in the sample, but not in the model, are shown in grey.

- Molecule 1: Serine protease hepsin



- Molecule 2: Serine protease hepsin



4 Data and refinement statistics

Property	Value	Source
Space group	P 1 21 1	Depositor
Cell constants a, b, c, α , β , γ	58.80Å 47.80Å 63.10Å 90.00° 104.80° 90.00°	Depositor
Resolution (Å)	25.70 – 1.75 24.62 – 1.63	Depositor EDS
% Data completeness (in resolution range)	90.0 (25.70-1.75) 77.3 (24.62-1.63)	Depositor EDS
R_{merge}	0.04	Depositor
R_{sym}	(Not available)	Depositor
$\langle I/\sigma(I) \rangle$ ¹	0.52 (at 1.63Å)	Xtriage
Refinement program	CNS	Depositor
R, R_{free}	0.186 , 0.206 0.194 , (Not available)	Depositor DCC
R_{free} test set	No test flags present.	DCC
Wilson B-factor (Å ²)	22.9	Xtriage
Anisotropy	0.232	Xtriage
Bulk solvent k_{sol} (e/Å ³), B_{sol} (Å ²)	0.35 , 92.4	EDS
L-test for twinning ²	$\langle L \rangle = 0.50$, $\langle L^2 \rangle = 0.34$	Xtriage
Estimated twinning fraction	No twinning to report.	Xtriage
F_o, F_c correlation	0.97	EDS
Total number of atoms	6325	wwPDB-VP
Average B, all atoms (Å ²)	29.0	wwPDB-VP

Xtriage's analysis on translational NCS is as follows: *The largest off-origin peak in the Patterson function is 6.84% of the height of the origin peak. No significant pseudotranslation is detected.*

¹Intensities estimated from amplitudes.

²Theoretical values of $\langle |L| \rangle$, $\langle L^2 \rangle$ for acentric reflections are 0.5, 0.333 respectively for untwinned datasets, and 0.375, 0.2 for perfectly twinned datasets.

5 Model quality [i](#)

5.1 Standard geometry [i](#)

Bond lengths and bond angles in the following residue types are not validated in this section: CR4

The Z score for a bond length (or angle) is the number of standard deviations the observed value is removed from the expected value. A bond length (or angle) with $|Z| > 5$ is considered an outlier worth inspection. RMSZ is the root-mean-square of all Z scores of the bond lengths (or angles).

Mol	Chain	Bond lengths		Bond angles	
		RMSZ	$\# Z > 5$	RMSZ	$\# Z > 5$
1	A	1.34	1/876 (0.1%)	1.54	13/1179 (1.1%)
2	B	1.36	1/1986 (0.1%)	1.62	47/2703 (1.7%)
All	All	1.35	2/2862 (0.1%)	1.60	60/3882 (1.5%)

Chiral center outliers are detected by calculating the chiral volume of a chiral center and verifying if the center is modelled as a planar moiety or with the opposite hand. A planarity outlier is detected by checking planarity of atoms in a peptide group, atoms in a mainchain group or atoms of a sidechain that are expected to be planar.

Mol	Chain	#Chirality outliers	#Planarity outliers
1	A	0	6
2	B	0	6
All	All	0	12

All (2) bond length outliers are listed below:

Mol	Chain	Res	Type	Atoms	Z	Observed(Å)	Ideal(Å)
1	A	28	TRP	CG-CD2	-5.90	1.33	1.43
2	B	208(C)	TRP	CG-CD2	-5.16	1.34	1.43

All (60) bond angle outliers are listed below:

Mol	Chain	Res	Type	Atoms	Z	Observed(°)	Ideal(°)
2	B	27	TRP	CD1-NE1-CE2	10.71	118.64	109.00
2	B	29	TRP	CD1-NE1-CE2	10.08	118.07	109.00
2	B	51	TRP	CD1-NE1-CE2	9.99	117.99	109.00
2	B	29	TRP	NE1-CE2-CZ2	9.66	141.03	130.40
1	A	28	TRP	CD1-NE1-CE2	9.60	117.64	109.00
1	A	35	ARG	NE-CZ-NH2	-9.53	115.54	120.30
1	A	28	TRP	NE1-CE2-CZ2	9.42	140.76	130.40

Continued on next page...

Continued from previous page...

Mol	Chain	Res	Type	Atoms	Z	Observed(°)	Ideal(°)
2	B	215	TRP	CD1-NE1-CE2	9.32	117.39	109.00
2	B	237	TRP	CD1-NE1-CE2	9.23	117.31	109.00
2	B	65(D)	TRP	CD1-NE1-CE2	9.19	117.27	109.00
2	B	141	TRP	CD1-NE1-CE2	9.03	117.13	109.00
2	B	208(C)	TRP	CD1-NE1-CE2	8.93	117.04	109.00
2	B	27	TRP	NE1-CE2-CZ2	8.17	139.39	130.40
2	B	208(C)	TRP	NE1-CE2-CZ2	8.16	139.38	130.40
2	B	215	TRP	NE1-CE2-CZ2	7.98	139.18	130.40
2	B	237	TRP	NE1-CE2-CZ2	7.83	139.01	130.40
2	B	65(D)	TRP	CG-CD1-NE1	-7.82	102.28	110.10
2	B	51	TRP	CG-CD1-NE1	-7.74	102.36	110.10
1	A	28	TRP	CG-CD1-NE1	-7.56	102.54	110.10
2	B	27	TRP	CG-CD1-NE1	-7.40	102.70	110.10
2	B	208(C)	TRP	CG-CD1-NE1	-7.34	102.76	110.10
2	B	29	TRP	CG-CD1-NE1	-7.25	102.85	110.10
2	B	141	TRP	NE1-CE2-CZ2	7.17	138.28	130.40
1	A	28	TRP	NE1-CE2-CD2	-7.13	100.17	107.30
2	B	51	TRP	NE1-CE2-CZ2	7.10	138.21	130.40
2	B	208(D)	ARG	NE-CZ-NH2	-7.07	116.77	120.30
2	B	141	TRP	CG-CD1-NE1	-7.03	103.07	110.10
1	A	60	ASP	CB-CG-OD2	-7.02	111.98	118.30
2	B	27	TRP	NE1-CE2-CD2	-6.96	100.34	107.30
2	B	50	ASP	CB-CG-OD1	-6.95	112.05	118.30
2	B	29	TRP	NE1-CE2-CD2	-6.87	100.44	107.30
2	B	235	ARG	NE-CZ-NH2	-6.84	116.88	120.30
2	B	97	PHE	CB-CG-CD1	-6.78	116.05	120.80
1	A	97	ARG	NE-CZ-NH2	-6.62	116.99	120.30
2	B	97	PHE	CB-CG-CD2	6.62	125.43	120.80
2	B	65(D)	TRP	NE1-CE2-CZ2	6.61	137.67	130.40
2	B	237	TRP	CG-CD1-NE1	-6.57	103.53	110.10
2	B	34	ARG	NE-CZ-NH2	-6.57	117.02	120.30
1	A	99	ARG	NE-CZ-NH2	-6.36	117.12	120.30
2	B	26	ARG	NE-CZ-NH2	-6.32	117.14	120.30
2	B	199	PHE	N-CA-C	-6.28	94.04	111.00
2	B	141	TRP	NE1-CE2-CD2	-6.10	101.20	107.30
2	B	215	TRP	NE1-CE2-CD2	-6.10	101.20	107.30
2	B	208(C)	TRP	NE1-CE2-CD2	-6.06	101.24	107.30
2	B	237	TRP	NE1-CE2-CD2	-6.04	101.26	107.30
1	A	76	ASP	CB-CG-OD2	-6.00	112.90	118.30
2	B	215	TRP	CG-CD1-NE1	-5.94	104.16	110.10
2	B	208(C)	TRP	CG-CD2-CE3	-5.92	128.57	133.90
2	B	51	TRP	NE1-CE2-CD2	-5.90	101.40	107.30

Continued on next page...

Continued from previous page...

Mol	Chain	Res	Type	Atoms	Z	Observed(°)	Ideal(°)
1	A	28	TRP	CA-CB-CG	-5.88	102.53	113.70
2	B	189	ASP	CB-CG-OD2	-5.83	113.06	118.30
2	B	208(B)	ARG	NE-CZ-NH2	-5.80	117.40	120.30
2	B	65(C)	ARG	NE-CZ-NH2	-5.50	117.55	120.30
1	A	79	ARG	NE-CZ-NH2	-5.49	117.55	120.30
1	A	15	ASP	CB-CG-OD2	-5.46	113.39	118.30
2	B	65(D)	TRP	NE1-CE2-CD2	-5.46	101.84	107.30
2	B	243	LYS	CA-CB-CG	-5.29	101.75	113.40
1	A	28	TRP	CG-CD2-CE3	-5.21	129.21	133.90
2	B	65	VAL	N-CA-C	-5.09	97.26	111.00
2	B	207	ARG	NE-CZ-NH2	-5.07	117.76	120.30

There are no chirality outliers.

All (12) planarity outliers are listed below:

Mol	Chain	Res	Type	Group
1	A	111	ARG	Sidechain
1	A	17	ARG	Sidechain
1	A	39	ARG	Sidechain
1	A	62	ARG	Sidechain
1	A	85	ARG	Sidechain
1	A	97	ARG	Sidechain
2	B	20	ARG	Sidechain
2	B	207	ARG	Sidechain
2	B	34	ARG	Sidechain
2	B	62	ARG	Sidechain
2	B	64	ARG	Sidechain
2	B	65(C)	ARG	Sidechain

5.2 Too-close contacts ⓘ

In the following table, the Non-H and H(model) columns list the number of non-hydrogen atoms and hydrogen atoms in the chain respectively. The H(added) column lists the number of hydrogen atoms added and optimized by MolProbity. The Clashes column lists the number of clashes within the asymmetric unit, whereas Symm-Clashes lists symmetry related clashes.

Mol	Chain	Non-H	H(model)	H(added)	Clashes	Symm-Clashes
1	A	850	853	849	12	0
2	B	1903	1857	1835	14	0
3	B	19	12	12	4	0
4	A	68	136	0	1	0

Continued on next page...

Continued from previous page...

Mol	Chain	Non-H	H(model)	H(added)	Clashes	Symm-Clashes
4	B	209	418	0	0	0
All	All	3049	3276	2696	27	0

The all-atom clashscore is defined as the number of clashes found per 1000 atoms (including hydrogen atoms). The all-atom clashscore for this structure is 5.

All (27) close contacts within the same asymmetric unit are listed below, sorted by their clash magnitude.

Atom-1	Atom-2	Interatomic distance (Å)	Clash overlap (Å)
2:B:65:VAL:HB	2:B:65(C):ARG:HD3	1.87	0.56
2:B:90:TYR:CZ	2:B:253:THR:HG22	2.40	0.56
2:B:195:SER:OG	3:B:346:CR4:O6'	2.18	0.55
3:B:346:CR4:N3	3:B:346:CR4:O6'	2.40	0.52
1:A:87:LEU:N	1:A:87:LEU:HD12	2.25	0.51
1:A:87:LEU:H	1:A:87:LEU:HD12	1.75	0.51
2:B:90:TYR:CZ	2:B:253:THR:CG2	2.94	0.50
1:A:73:PHE:HB3	1:A:90:ILE:HG12	1.94	0.50
1:A:73:PHE:HB3	1:A:90:ILE:CG1	2.44	0.48
2:B:90:TYR:CE2	2:B:253:THR:HG22	2.49	0.47
1:A:36[B]:SER:OG	1:A:77:GLU:HG2	2.15	0.47
2:B:195:SER:HG	3:B:346:CR4:HN3	1.62	0.47
1:A:28:TRP:N	1:A:28:TRP:CD1	2.83	0.46
1:A:17:ARG:HA	1:A:102:ALA:HA	2.00	0.43
1:A:19:MET:HE1	4:A:152:HOH:O	2.18	0.43
1:A:87:LEU:H	1:A:87:LEU:CD1	2.31	0.43
2:B:136:CYS:HB2	2:B:199:PHE:CZ	2.53	0.43
2:B:27:TRP:CZ2	2:B:137:THR:HG21	2.54	0.42
2:B:65:VAL:HB	2:B:65(C):ARG:CD	2.50	0.41
2:B:35:TYR:CE1	2:B:65(C):ARG:HB2	2.56	0.41
2:B:143:ASN:HB3	2:B:145:GLN:O	2.21	0.41
1:A:85:ARG:O	1:A:88:GLU:HG2	2.21	0.41
2:B:146:TYR:C	2:B:146:TYR:CD2	2.95	0.40
1:A:7:TYR:CG	1:A:8:PRO:HD2	2.57	0.40
2:B:195:SER:OG	3:B:346:CR4:N3	2.46	0.40

There are no symmetry-related clashes.

5.3 Torsion angles [i](#)

5.3.1 Protein backbone [i](#)

In the following table, the Percentiles column shows the percent Ramachandran outliers of the chain as a percentile score with respect to all X-ray entries followed by that with respect to entries of similar resolution.

The Analysed column shows the number of residues for which the backbone conformation was analysed, and the total number of residues.

Mol	Chain	Analysed	Favoured	Allowed	Outliers	Percentiles	
1	A	111/114 (97%)	110 (99%)	1 (1%)	0	100	100
2	B	250/255 (98%)	240 (96%)	9 (4%)	1 (0%)	39	19
All	All	361/369 (98%)	350 (97%)	10 (3%)	1 (0%)	46	25

All (1) Ramachandran outliers are listed below:

Mol	Chain	Res	Type
2	B	175	GLY

5.3.2 Protein sidechains [i](#)

In the following table, the Percentiles column shows the percent sidechain outliers of the chain as a percentile score with respect to all X-ray entries followed by that with respect to entries of similar resolution.

The Analysed column shows the number of residues for which the sidechain conformation was analysed, and the total number of residues.

Mol	Chain	Analysed	Rotameric	Outliers	Percentiles	
1	A	94/95 (99%)	89 (95%)	5 (5%)	28	7
2	B	203/203 (100%)	201 (99%)	2 (1%)	82	69
All	All	297/298 (100%)	290 (98%)	7 (2%)	57	31

All (7) residues with a non-rotameric sidechain are listed below:

Mol	Chain	Res	Type
1	A	30	LEU
1	A	39	ARG
1	A	80	LEU
1	A	83	THR
1	A	91	SER

Continued on next page...

Continued from previous page...

Mol	Chain	Res	Type
2	B	168	CYS
2	B	252	VAL

Some sidechains can be flipped to improve hydrogen bonding and reduce clashes. All (2) such sidechains are listed below:

Mol	Chain	Res	Type
2	B	192	GLN
2	B	240	GLN

5.3.3 RNA [i](#)

There are no RNA molecules in this entry.

5.4 Non-standard residues in protein, DNA, RNA chains [i](#)

There are no non-standard protein/DNA/RNA residues in this entry.

5.5 Carbohydrates [i](#)

There are no carbohydrates in this entry.

5.6 Ligand geometry [i](#)

1 ligand is modelled in this entry.

In the following table, the Counts columns list the number of bonds (or angles) for which Mogul statistics could be retrieved, the number of bonds (or angles) that are observed in the model and the number of bonds (or angles) that are defined in the chemical component dictionary. The Link column lists molecule types, if any, to which the group is linked. The Z score for a bond length (or angle) is the number of standard deviations the observed value is removed from the expected value. A bond length (or angle) with $|Z| > 2$ is considered an outlier worth inspection. RMSZ is the root-mean-square of all Z scores of the bond lengths (or angles).

Mol	Type	Chain	Res	Link	Bond lengths			Bond angles		
					Counts	RMSZ	$\# Z > 2$	Counts	RMSZ	$\# Z > 2$
3	CR4	B	346	-	19,21,21	2.81	9 (47%)	22,30,30	1.80	8 (36%)

In the following table, the Chirals column lists the number of chiral outliers, the number of chiral centers analysed, the number of these observed in the model and the number defined in the chemical

component dictionary. Similar counts are reported in the Torsion and Rings columns. '-' means no outliers of that kind were identified.

Mol	Type	Chain	Res	Link	Chirals	Torsions	Rings
3	CR4	B	346	-	-	0/5/8/8	0/3/3/3

All (9) bond length outliers are listed below:

Mol	Chain	Res	Type	Atoms	Z	Observed(Å)	Ideal(Å)
3	B	346	CR4	C1-C7	-8.70	1.41	1.48
3	B	346	CR4	C8-N3	-3.02	1.31	1.35
3	B	346	CR4	C1'-C8	-2.93	1.40	1.48
3	B	346	CR4	C6-C5	-2.40	1.38	1.41
3	B	346	CR4	C3-C4	-2.10	1.36	1.40
3	B	346	CR4	C3-C2	2.28	1.41	1.36
3	B	346	CR4	O6'-C6'	2.57	1.39	1.30
3	B	346	CR4	C6-C1	2.61	1.42	1.37
3	B	346	CR4	C2-C1	3.23	1.44	1.39

All (8) bond angle outliers are listed below:

Mol	Chain	Res	Type	Atoms	Z	Observed(°)	Ideal(°)
3	B	346	CR4	C2-C3-C4	-3.12	115.41	119.47
3	B	346	CR4	N1-C7-N2	-2.84	117.29	120.26
3	B	346	CR4	O6'-C6'-C1'	-2.76	117.64	121.86
3	B	346	CR4	C8-N4-C5	-2.61	98.89	103.89
3	B	346	CR4	C6-C5-N4	-2.16	124.37	130.72
3	B	346	CR4	C1-C7-N1	2.25	121.41	119.95
3	B	346	CR4	C4-C5-N4	2.39	113.18	108.16
3	B	346	CR4	C2'-C1'-C8	2.84	123.58	118.75

There are no chirality outliers.

There are no torsion outliers.

There are no ring outliers.

1 monomer is involved in 4 short contacts:

Mol	Chain	Res	Type	Clashes	Symm-Clashes
3	B	346	CR4	4	0

5.7 Other polymers ⓘ

There are no such residues in this entry.

5.8 Polymer linkage issues ⓘ

There are no chain breaks in this entry.

6 Fit of model and data

6.1 Protein, DNA and RNA chains

In the following table, the column labelled ‘#RSRZ> 2’ contains the number (and percentage) of RSRZ outliers, followed by percent RSRZ outliers for the chain as percentile scores relative to all X-ray entries and entries of similar resolution. The OWAB column contains the minimum, median, 95th percentile and maximum values of the occupancy-weighted average B-factor per residue. The column labelled ‘Q< 0.9’ lists the number of (and percentage) of residues with an average occupancy less than 0.9.

Mol	Chain	Analysed	<RSRZ>	#RSRZ>2	OWAB(Å ²)	Q<0.9
1	A	110/114 (96%)	0.39	7 (6%) 23 28	14, 29, 47, 58	13 (11%)
2	B	247/255 (96%)	0.19	14 (5%) 27 32	11, 21, 50, 58	21 (8%)
All	All	357/369 (96%)	0.25	21 (5%) 26 31	11, 24, 50, 58	34 (9%)

All (21) RSRZ outliers are listed below:

Mol	Chain	Res	Type	RSRZ
1	A	84	GLN	4.9
2	B	95	LEU	4.8
2	B	254[A]	GLN	4.2
1	A	62	ARG	3.9
2	B	246[A]	SER	3.9
2	B	244	THR	3.8
2	B	97	PHE	3.4
1	A	61	VAL	3.4
2	B	245	HIS	2.9
2	B	253	THR	2.9
2	B	250	GLY	2.8
2	B	249	SER	2.7
2	B	247	GLU	2.6
2	B	76	PRO	2.5
1	A	81	PRO	2.4
1	A	82	HIS	2.4
1	A	80	LEU	2.3
2	B	96	PRO	2.3
1	A	5	PRO	2.2
2	B	248	ALA	2.2
2	B	62	ARG	2.1

6.2 Non-standard residues in protein, DNA, RNA chains [i](#)

There are no non-standard protein/DNA/RNA residues in this entry.

6.3 Carbohydrates [i](#)

There are no carbohydrates in this entry.

6.4 Ligands [i](#)

In the following table, the Atoms column lists the number of modelled atoms in the group and the number defined in the chemical component dictionary. LLDF column lists the quality of electron density of the group with respect to its neighbouring residues in protein, DNA or RNA chains. The B-factors column lists the minimum, median, 95th percentile and maximum values of B factors of atoms in the group. The column labelled 'Q< 0.9' lists the number of atoms with occupancy less than 0.9.

Mol	Type	Chain	Res	Atoms	RSCC	RSR	LLDF	B-factors(\AA^2)	Q<0.9
3	CR4	B	346	19/19	0.91	0.11	0.41	16,21,30,32	0

6.5 Other polymers [i](#)

There are no such residues in this entry.