



# wwPDB X-ray Structure Validation Summary Report ⓘ

Feb 1, 2016 – 11:33 AM GMT

PDB ID : 3P50  
Title : Structure of propofol bound to a pentameric ligand-gated ion channel, GLIC  
Authors : Nury, H.; Van Renterghem, C.; Weng, Y.; Tran, A.; Baaden, M.; Dufresne, V.; Changeux, J.P.; Sonner, J.M.; Delarue, M.; Corringer, P.J.  
Deposited on : 2010-10-07  
Resolution : 3.30 Å(reported)

This is a wwPDB X-ray Structure Validation Summary Report for a publicly released PDB entry.  
We welcome your comments at [validation@mail.wwpdb.org](mailto:validation@mail.wwpdb.org)  
A user guide is available at  
<http://wwpdb.org/validation/2016/XrayValidationReportHelp>  
with specific help available everywhere you see the ⓘ symbol.

---

The following versions of software and data (see [references ⓘ](#)) were used in the production of this report:

MolProbity : 4.02b-467  
Mogul : 1.7 (RC4), CSD as536be (2015)  
Xtriage (Phenix) : 1.9-1692  
EDS : rb-20026688  
Percentile statistics : 20151230.v01 (using entries in the PDB archive December 30th 2015)  
Refmac : 5.8.0135  
CCP4 : 6.5.0  
Ideal geometry (proteins) : Engh & Huber (2001)  
Ideal geometry (DNA, RNA) : Parkinson et al. (1996)  
Validation Pipeline (wwPDB-VP) : trunk26865

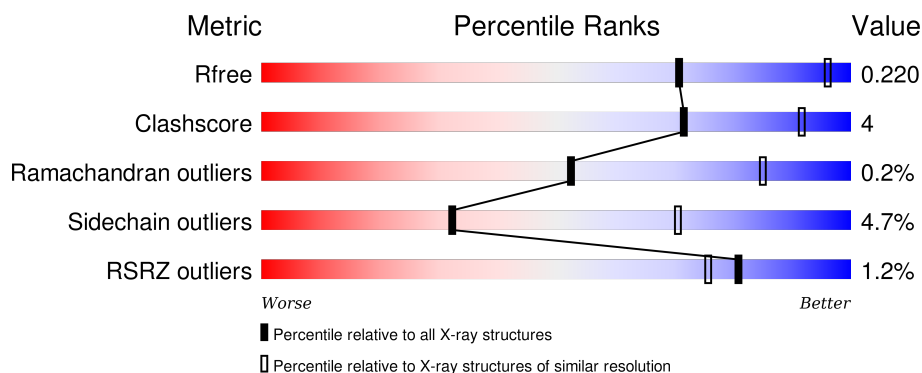
# 1 Overall quality at a glance ⓘ

The following experimental techniques were used to determine the structure:

## *X-RAY DIFFRACTION*

The reported resolution of this entry is 3.30 Å.

Percentile scores (ranging between 0-100) for global validation metrics of the entry are shown in the following graphic. The table shows the number of entries on which the scores are based.



Metric	Whole archive (#Entries)	Similar resolution (#Entries, resolution range(Å))
$R_{free}$	91344	2060 (3.40-3.20)
Clashscore	102246	1058 (3.38-3.22)
Ramachandran outliers	100387	1038 (3.38-3.22)
Sidechain outliers	100360	1037 (3.38-3.22)
RSRZ outliers	91569	2070 (3.40-3.20)

The table below summarises the geometric issues observed across the polymeric chains and their fit to the electron density. The red, orange, yellow and green segments on the lower bar indicate the fraction of residues that contain outliers for  $\geq 3$ , 2, 1 and 0 types of geometric quality criteria. A grey segment represents the fraction of residues that are not modelled. The numeric value for each fraction is indicated below the corresponding segment, with a dot representing fractions  $\leq 5\%$ . The upper red bar (where present) indicates the fraction of residues that have poor fit to the electron density. The numeric value is given above the bar.

Mol	Chain	Length	Quality of chain
1	A	318	<div> <div>2%</div> <div>83%14%..</div> </div>
1	B	318	<div> <div>86%12%.</div> </div>
1	C	318	<div> <div>2%</div> <div>83%14%.</div> </div>
1	D	318	<div> <div>%</div> <div>85%12%..</div> </div>
1	E	318	<div> <div>%</div> <div>85%13%. .</div> </div>

The following table lists non-polymeric compounds, carbohydrate monomers and non-standard residues in protein, DNA, RNA chains that are outliers for geometric or electron-density-fit criteria:

Mol	Type	Chain	Res	Chirality	Geometry	Clashes	Electron density
2	LMT	A	501	-	-	-	X
2	LMT	A	502	-	-	-	X
2	LMT	B	501	-	-	-	X
2	LMT	D	319	-	-	-	X
2	LMT	D	501	-	-	-	X
2	LMT	E	501	-	-	-	X
3	PFL	A	319	-	-	-	X
3	PFL	B	319	-	-	-	X
3	PFL	C	319	-	-	-	X
3	PFL	D	320	-	-	-	X
3	PFL	E	319	-	-	-	X
4	PLC	A	320	-	-	-	X
4	PLC	B	320	-	-	-	X
4	PLC	C	320	-	-	-	X
4	PLC	D	321	-	-	-	X
4	PLC	D	322	-	-	-	X
4	PLC	E	320	-	-	-	X

## 2 Entry composition

There are 5 unique types of molecules in this entry. The entry contains 13003 atoms, of which 0 are hydrogens and 0 are deuteriums.

In the tables below, the ZeroOcc column contains the number of atoms modelled with zero occupancy, the AltConf column contains the number of residues with at least one atom in alternate conformation and the Trace column contains the number of residues modelled with at most 2 atoms.

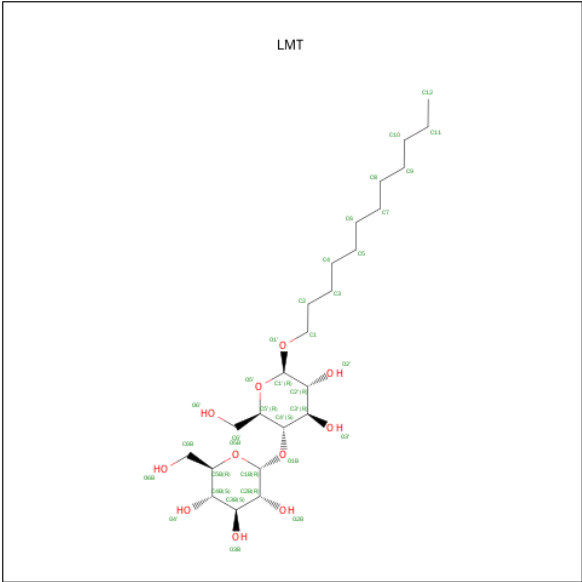
- Molecule 1 is a protein called Glr4197 protein.

Mol	Chain	Residues	Atoms					ZeroOcc	AltConf	Trace
1	A	311	Total	C	N	O	S	0	0	0
			2525	1664	404	453	4			
1	B	311	Total	C	N	O	S	0	0	0
			2525	1664	404	453	4			
1	C	311	Total	C	N	O	S	0	0	0
			2525	1664	404	453	4			
1	D	311	Total	C	N	O	S	0	0	0
			2525	1664	404	453	4			
1	E	311	Total	C	N	O	S	0	0	0
			2525	1664	404	453	4			

There are 10 discrepancies between the modelled and reference sequences:

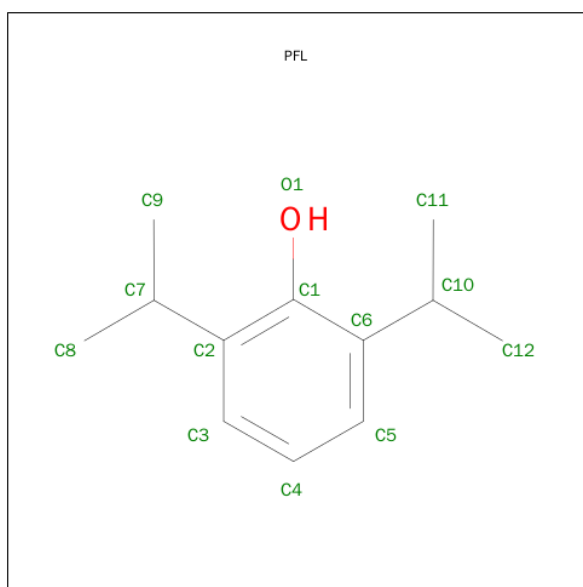
Chain	Residue	Modelled	Actual	Comment	Reference
A	1	ALA	-	EXPRESSION TAG	UNP Q7NDN8
A	318	GLY	-	EXPRESSION TAG	UNP Q7NDN8
B	1	ALA	-	EXPRESSION TAG	UNP Q7NDN8
B	318	GLY	-	EXPRESSION TAG	UNP Q7NDN8
C	1	ALA	-	EXPRESSION TAG	UNP Q7NDN8
C	318	GLY	-	EXPRESSION TAG	UNP Q7NDN8
D	1	ALA	-	EXPRESSION TAG	UNP Q7NDN8
D	318	GLY	-	EXPRESSION TAG	UNP Q7NDN8
E	1	ALA	-	EXPRESSION TAG	UNP Q7NDN8
E	318	GLY	-	EXPRESSION TAG	UNP Q7NDN8

- Molecule 2 is DODECYL-BETA-D-MALTOSE (three-letter code: LMT) (formula:  $C_{24}H_{46}O_{11}$ ).



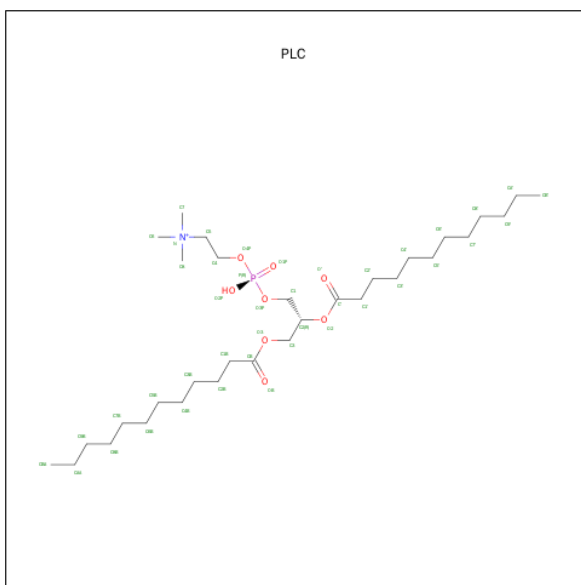
Mol	Chain	Residues	Atoms			ZeroOcc	AltConf
2	A	1	Total	C	O	0	0
			14	13	1		
2	A	1	Total	C	O	0	0
			35	24	11		
2	B	1	Total	C	O	0	0
			14	13	1		
2	D	1	Total	C	O	0	0
			14	13	1		
2	D	1	Total	C	O	0	0
			14	13	1		
2	E	1	Total	C	O	0	0
			14	13	1		

- Molecule 3 is 2,6-BIS(1-METHYLETHYL)PHENOL (three-letter code: PFL) (formula: C<sub>12</sub>H<sub>18</sub>O).



Mol	Chain	Residues	Atoms			ZeroOcc	AltConf
3	A	1	Total	C	O	0	0
			13	12	1		
3	B	1	Total	C	O	0	0
			13	12	1		
3	C	1	Total	C	O	0	0
			13	12	1		
3	D	1	Total	C	O	0	0
			13	12	1		
3	E	1	Total	C	O	0	0
			13	12	1		

- Molecule 4 is DIUNDECYL PHOSPHATIDYL CHOLINE (three-letter code: PLC) (formula:  $C_{32}H_{65}NO_8P$ ).



Mol	Chain	Residues	Atoms	ZeroOcc	AltConf
4	A	1	Total C N O P 28 18 1 8 1	0	0
4	A	1	Total C 9 9	0	0
4	B	1	Total C N O P 28 18 1 8 1	0	0
4	B	1	Total C 9 9	0	0
4	C	1	Total C N O P 28 18 1 8 1	0	0
4	C	1	Total C 9 9	0	0
4	D	1	Total C N O P 28 18 1 8 1	0	0
4	D	1	Total C 9 9	0	0
4	E	1	Total C N O P 28 18 1 8 1	0	0
4	E	1	Total C 9 9	0	0

- Molecule 5 is water.

Mol	Chain	Residues	Atoms	ZeroOcc	AltConf
5	A	4	Total O 4 4	0	0
5	B	5	Total O 5 5	0	0

*Continued on next page...*

*Continued from previous page...*

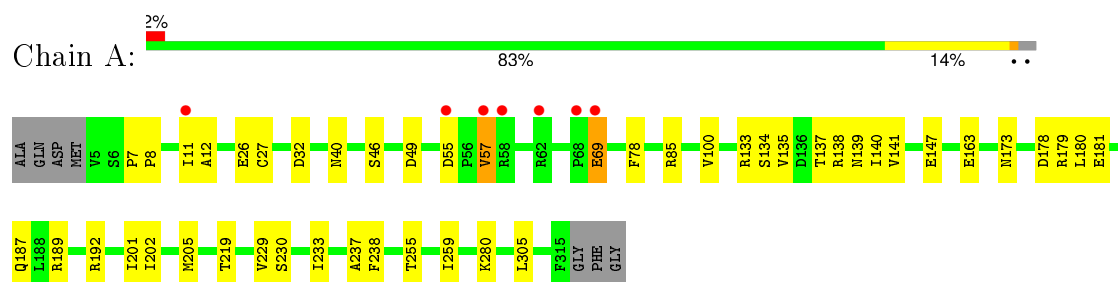
Mol	Chain	Residues	Atoms		ZeroOcc	AltConf
5	C	3	Total 3	O 3	0	0
5	D	4	Total 4	O 4	0	0
5	E	7	Total 7	O 7	0	0



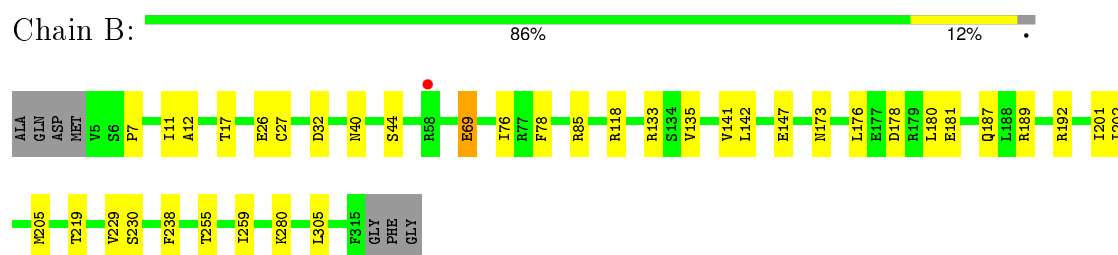
### 3 Residue-property plots [i](#)

These plots are drawn for all protein, RNA and DNA chains in the entry. The first graphic for a chain summarises the proportions of errors displayed in the second graphic. The second graphic shows the sequence view annotated by issues in geometry and electron density. Residues are color-coded according to the number of geometric quality criteria for which they contain at least one outlier: green = 0, yellow = 1, orange = 2 and red = 3 or more. A red dot above a residue indicates a poor fit to the electron density ( $RSRZ > 2$ ). Stretches of 2 or more consecutive residues without any outlier are shown as a green connector. Residues present in the sample, but not in the model, are shown in grey.

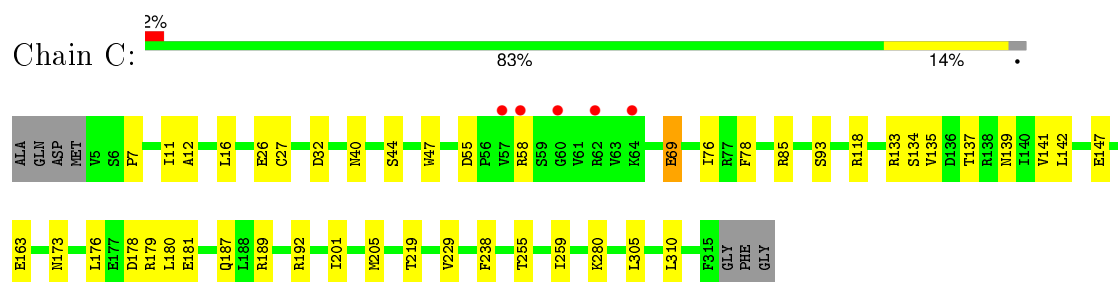
#### • Molecule 1: Glr4197 protein



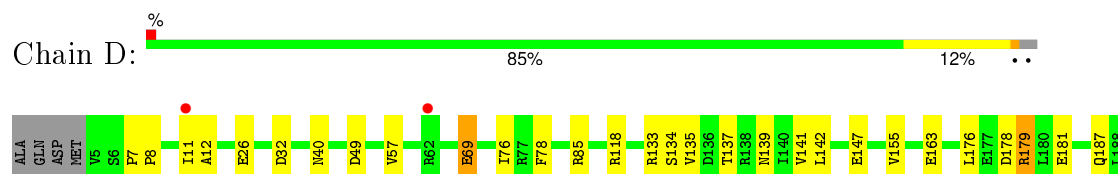
#### • Molecule 1: Glr4197 protein

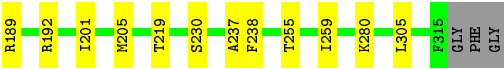


#### • Molecule 1: Glr4197 protein

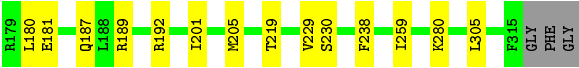
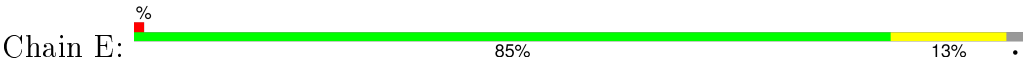


#### • Molecule 1: Glr4197 protein





● Molecule 1: Glr4197 protein



## 4 Data and refinement statistics

Property	Value	Source
Space group	C 1 2 1	Depositor
Cell constants a, b, c, $\alpha$ , $\beta$ , $\gamma$	181.13Å 132.78Å 159.97Å 90.00° 102.32° 90.00°	Depositor
Resolution (Å)	12.00 – 3.30 24.79 – 3.30	Depositor EDS
% Data completeness (in resolution range)	90.6 (12.00-3.30) 92.6 (24.79-3.30)	Depositor EDS
$R_{merge}$	0.12	Depositor
$R_{sym}$	(Not available)	Depositor
$\langle I/\sigma(I) \rangle$ <sup>1</sup>	2.58 (at 3.30Å)	Xtriage
Refinement program	BUSTER 2.9.3	Depositor
R, $R_{free}$	0.183 , 0.203 0.199 , 0.220	Depositor DCC
$R_{free}$ test set	2554 reflections (5.32%)	DCC
Wilson B-factor (Å <sup>2</sup> )	67.4	Xtriage
Anisotropy	0.303	Xtriage
Bulk solvent $k_{sol}$ (e/Å <sup>3</sup> ), $B_{sol}$ (Å <sup>2</sup> )	0.34 , 81.9	EDS
Estimated twinning fraction	No twinning to report.	Xtriage
L-test for twinning <sup>2</sup>	$\langle  L  \rangle = 0.45$ , $\langle L^2 \rangle = 0.27$	Xtriage
Outliers	0 of 51484 reflections	Xtriage
$F_o, F_c$ correlation	0.92	EDS
Total number of atoms	13003	wwPDB-VP
Average B, all atoms (Å <sup>2</sup> )	69.0	wwPDB-VP

Xtriage's analysis on translational NCS is as follows: *The largest off-origin peak in the Patterson function is 4.23% of the height of the origin peak. No significant pseudotranslation is detected.*

<sup>1</sup>Intensities estimated from amplitudes.

<sup>2</sup>Theoretical values of  $\langle |L| \rangle$ ,  $\langle L^2 \rangle$  for acentric reflections are 0.5, 0.375 respectively for untwinned datasets, and 0.333, 0.2 for perfectly twinned datasets.

## 5 Model quality [i](#)

### 5.1 Standard geometry [i](#)

Bond lengths and bond angles in the following residue types are not validated in this section: LMT, PLC, PFL

The Z score for a bond length (or angle) is the number of standard deviations the observed value is removed from the expected value. A bond length (or angle) with  $|Z| > 5$  is considered an outlier worth inspection. RMSZ is the root-mean-square of all Z scores of the bond lengths (or angles).

Mol	Chain	Bond lengths		Bond angles	
		RMSZ	# $ Z  > 5$	RMSZ	# $ Z  > 5$
1	A	0.49	0/2593	0.70	0/3545
1	B	0.49	0/2593	0.70	0/3545
1	C	0.49	0/2593	0.70	0/3545
1	D	0.49	0/2593	0.70	0/3545
1	E	0.48	0/2593	0.70	0/3545
All	All	0.49	0/12965	0.70	0/17725

There are no bond length outliers.

There are no bond angle outliers.

There are no chirality outliers.

There are no planarity outliers.

### 5.2 Too-close contacts [i](#)

In the following table, the Non-H and H(model) columns list the number of non-hydrogen atoms and hydrogen atoms in the chain respectively. The H(added) column lists the number of hydrogen atoms added and optimized by MolProbity. The Clashes column lists the number of clashes within the asymmetric unit, whereas Symm-Clashes lists symmetry related clashes.

Mol	Chain	Non-H	H(model)	H(added)	Clashes	Symm-Clashes
1	A	2525	0	2545	26	0
1	B	2525	0	2545	19	0
1	C	2525	0	2545	22	0
1	D	2525	0	2545	22	0
1	E	2525	0	2545	20	0
2	A	49	0	71	8	0
2	B	14	0	25	1	0
2	D	28	0	50	1	0

*Continued on next page...*

*Continued from previous page...*

Mol	Chain	Non-H	H(model)	H(added)	Clashes	Symm-Clashes
2	E	14	0	25	0	0
3	A	13	0	18	3	0
3	B	13	0	17	2	0
3	C	13	0	18	2	0
3	D	13	0	17	2	0
3	E	13	0	17	0	0
4	A	37	0	44	1	0
4	B	37	0	44	2	0
4	C	37	0	44	1	0
4	D	37	0	44	1	0
4	E	37	0	44	1	0
5	A	4	0	0	0	0
5	B	5	0	0	0	0
5	C	3	0	0	0	0
5	D	4	0	0	0	0
5	E	7	0	0	0	0
All	All	13003	0	13203	113	0

The all-atom clashscore is defined as the number of clashes found per 1000 atoms (including hydrogen atoms). The all-atom clashscore for this structure is 4.

The worst 5 of 113 close contacts within the same asymmetric unit are listed below, sorted by their clash magnitude.

Atom-1	Atom-2	Interatomic distance (Å)	Clash overlap (Å)
1:B:78:PHE:HE2	1:B:85:ARG:HD3	1.25	1.02
1:D:78:PHE:HE2	1:D:85:ARG:HD3	1.25	1.01
1:A:78:PHE:HE2	1:A:85:ARG:HD3	1.23	0.99
1:E:78:PHE:HE2	1:E:85:ARG:HD3	1.25	0.98
1:C:78:PHE:HE2	1:C:85:ARG:HD3	1.25	0.97

There are no symmetry-related clashes.

## 5.3 Torsion angles [i](#)

### 5.3.1 Protein backbone [i](#)

In the following table, the Percentiles column shows the percent Ramachandran outliers of the chain as a percentile score with respect to all X-ray entries followed by that with respect to entries of similar resolution.

The Analysed column shows the number of residues for which the backbone conformation was analysed, and the total number of residues.

Mol	Chain	Analysed	Favoured	Allowed	Outliers	Percentiles	
1	A	309/318 (97%)	295 (96%)	13 (4%)	1 (0%)	46	81
1	B	309/318 (97%)	296 (96%)	13 (4%)	0	100	100
1	C	309/318 (97%)	297 (96%)	12 (4%)	0	100	100
1	D	309/318 (97%)	297 (96%)	11 (4%)	1 (0%)	46	81
1	E	309/318 (97%)	294 (95%)	14 (4%)	1 (0%)	46	81
All	All	1545/1590 (97%)	1479 (96%)	63 (4%)	3 (0%)	52	85

All (3) Ramachandran outliers are listed below:

Mol	Chain	Res	Type
1	A	57	VAL
1	D	155	VAL
1	E	155	VAL

### 5.3.2 Protein sidechains ⓘ

In the following table, the Percentiles column shows the percent sidechain outliers of the chain as a percentile score with respect to all X-ray entries followed by that with respect to entries of similar resolution.

The Analysed column shows the number of residues for which the sidechain conformation was analysed, and the total number of residues.

Mol	Chain	Analysed	Rotameric	Outliers	Percentiles	
1	A	280/284 (99%)	267 (95%)	13 (5%)	33	71
1	B	280/284 (99%)	268 (96%)	12 (4%)	35	72
1	C	280/284 (99%)	265 (95%)	15 (5%)	27	66
1	D	280/284 (99%)	267 (95%)	13 (5%)	33	71
1	E	280/284 (99%)	267 (95%)	13 (5%)	33	71
All	All	1400/1420 (99%)	1334 (95%)	66 (5%)	32	70

5 of 66 residues with a non-rotameric sidechain are listed below:

Mol	Chain	Res	Type
1	C	137	THR
1	C	219	THR

*Continued on next page...*

*Continued from previous page...*

Mol	Chain	Res	Type
1	E	178	ASP
1	C	141	VAL
1	C	178	ASP

Some sidechains can be flipped to improve hydrogen bonding and reduce clashes. There are no such sidechains identified.

### 5.3.3 RNA ⓘ

There are no RNA molecules in this entry.

## 5.4 Non-standard residues in protein, DNA, RNA chains ⓘ

There are no non-standard protein/DNA/RNA residues in this entry.

## 5.5 Carbohydrates ⓘ

There are no carbohydrates in this entry.

## 5.6 Ligand geometry ⓘ

21 ligands are modelled in this entry.

In the following table, the Counts columns list the number of bonds (or angles) for which Mogul statistics could be retrieved, the number of bonds (or angles) that are observed in the model and the number of bonds (or angles) that are defined in the chemical component dictionary. The Link column lists molecule types, if any, to which the group is linked. The Z score for a bond length (or angle) is the number of standard deviations the observed value is removed from the expected value. A bond length (or angle) with  $|Z| > 2$  is considered an outlier worth inspection. RMSZ is the root-mean-square of all Z scores of the bond lengths (or angles).

Mol	Type	Chain	Res	Link	Bond lengths			Bond angles		
					Counts	RMSZ	# $ Z  > 2$	Counts	RMSZ	# $ Z  > 2$
3	PFL	A	319	-	13,13,13	3.18	8 (61%)	18,18,18	1.32	2 (11%)
4	PLC	A	320	-	27,27,41	1.47	4 (14%)	31,35,49	3.16	11 (35%)
4	PLC	A	321	-	8,8,41	0.69	0	7,7,49	0.56	0
2	LMT	A	501	-	13,13,36	0.51	0	12,12,47	0.77	0
2	LMT	A	502	-	36,36,36	1.83	7 (19%)	47,47,47	2.20	14 (29%)
3	PFL	B	319	-	13,13,13	2.64	7 (53%)	18,18,18	1.28	2 (11%)

Mol	Type	Chain	Res	Link	Bond lengths			Bond angles		
					Counts	RMSZ	# Z  > 2	Counts	RMSZ	# Z  > 2
4	PLC	B	320	-	27,27,41	1.56	4 (14%)	31,35,49	3.20	11 (35%)
4	PLC	B	321	-	8,8,41	0.66	0	7,7,49	0.54	0
2	LMT	B	501	-	13,13,36	0.50	0	12,12,47	0.95	0
3	PFL	C	319	-	13,13,13	3.06	8 (61%)	18,18,18	1.27	3 (16%)
4	PLC	C	320	-	27,27,41	1.44	5 (18%)	31,35,49	3.10	9 (29%)
4	PLC	C	321	-	8,8,41	0.62	0	7,7,49	0.69	0
2	LMT	D	319	-	13,13,36	0.48	0	12,12,47	0.59	0
3	PFL	D	320	-	13,13,13	3.25	9 (69%)	18,18,18	1.28	4 (22%)
4	PLC	D	321	-	27,27,41	1.57	5 (18%)	31,35,49	3.23	11 (35%)
4	PLC	D	322	-	8,8,41	0.50	0	7,7,49	0.70	0
2	LMT	D	501	-	13,13,36	0.37	0	12,12,47	0.99	0
3	PFL	E	319	-	13,13,13	3.07	8 (61%)	18,18,18	1.42	3 (16%)
4	PLC	E	320	-	27,27,41	1.48	4 (14%)	31,35,49	3.11	10 (32%)
4	PLC	E	321	-	8,8,41	0.56	0	7,7,49	0.54	0
2	LMT	E	501	-	13,13,36	0.64	0	12,12,47	0.72	0

In the following table, the Chirals column lists the number of chiral outliers, the number of chiral centers analysed, the number of these observed in the model and the number defined in the chemical component dictionary. Similar counts are reported in the Torsion and Rings columns. '-' means no outliers of that kind were identified.

Mol	Type	Chain	Res	Link	Chirals	Torsions	Rings
3	PFL	A	319	-	-	0/8/8/8	0/1/1/1
4	PLC	A	320	-	-	0/30/30/45	0/0/0/0
4	PLC	A	321	-	-	0/6/6/45	0/0/0/0
2	LMT	A	501	-	-	0/11/11/61	0/0/0/2
2	LMT	A	502	-	-	0/21/61/61	0/2/2/2
3	PFL	B	319	-	-	0/8/8/8	0/1/1/1
4	PLC	B	320	-	-	0/30/30/45	0/0/0/0
4	PLC	B	321	-	-	0/6/6/45	0/0/0/0
2	LMT	B	501	-	-	0/11/11/61	0/0/0/2
3	PFL	C	319	-	-	0/8/8/8	0/1/1/1
4	PLC	C	320	-	-	0/30/30/45	0/0/0/0
4	PLC	C	321	-	-	0/6/6/45	0/0/0/0
2	LMT	D	319	-	-	0/11/11/61	0/0/0/2
3	PFL	D	320	-	-	0/8/8/8	0/1/1/1
4	PLC	D	321	-	-	0/30/30/45	0/0/0/0
4	PLC	D	322	-	-	0/6/6/45	0/0/0/0
2	LMT	D	501	-	-	0/11/11/61	0/0/0/2
3	PFL	E	319	-	-	0/8/8/8	0/1/1/1
4	PLC	E	320	-	-	0/30/30/45	0/0/0/0

*Continued on next page...*



*Continued from previous page...*

Mol	Type	Chain	Res	Link	Chirals	Torsions	Rings
4	PLC	E	321	-	-	0/6/6/45	0/0/0/0
2	LMT	E	501	-	-	0/11/11/61	0/0/0/2

The worst 5 of 69 bond length outliers are listed below:

Mol	Chain	Res	Type	Atoms	Z	Observed(Å)	Ideal(Å)
4	E	320	PLC	P-O3P	2.00	1.68	1.59
4	E	320	PLC	O2-C'	2.00	1.40	1.34
4	A	320	PLC	C1'-C'	2.01	1.56	1.50
4	D	321	PLC	C3-C2	2.01	1.56	1.50
4	C	320	PLC	O2-C'	2.03	1.40	1.34

The worst 5 of 80 bond angle outliers are listed below:

Mol	Chain	Res	Type	Atoms	Z	Observed(°)	Ideal(°)
4	B	320	PLC	C7-N-C6	-6.55	92.12	108.98
4	A	320	PLC	C7-N-C6	-6.26	92.88	108.98
4	C	320	PLC	C7-N-C6	-6.07	93.37	108.98
4	E	320	PLC	C7-N-C6	-5.99	93.56	108.98
4	D	321	PLC	C7-N-C6	-5.88	93.86	108.98

There are no chirality outliers.

There are no torsion outliers.

There are no ring outliers.

15 monomers are involved in 24 short contacts:

Mol	Chain	Res	Type	Clashes	Symm-Clashes
3	A	319	PFL	3	0
4	A	320	PLC	1	0
4	A	321	PLC	1	0
2	A	501	LMT	5	0
2	A	502	LMT	7	0
3	B	319	PFL	2	0
4	B	320	PLC	2	0
4	B	321	PLC	1	0
2	B	501	LMT	1	0
3	C	319	PFL	2	0
4	C	320	PLC	1	0
2	D	319	LMT	1	0
3	D	320	PFL	2	0
4	D	321	PLC	1	0

*Continued on next page...*

*Continued from previous page...*

Mol	Chain	Res	Type	Clashes	Symm-Clashes
4	E	320	PLC	1	0

## 5.7 Other polymers [i](#)

There are no such residues in this entry.

## 5.8 Polymer linkage issues [i](#)

There are no chain breaks in this entry.

## 6 Fit of model and data ⓘ

### 6.1 Protein, DNA and RNA chains ⓘ

In the following table, the column labelled ‘#RSRZ> 2’ contains the number (and percentage) of RSRZ outliers, followed by percent RSRZ outliers for the chain as percentile scores relative to all X-ray entries and entries of similar resolution. The OWAB column contains the minimum, median, 95<sup>th</sup> percentile and maximum values of the occupancy-weighted average B-factor per residue. The column labelled ‘Q< 0.9’ lists the number of (and percentage) of residues with an average occupancy less than 0.9.

Mol	Chain	Analysed	<RSRZ>	#RSRZ>2	OWAB(Å <sup>2</sup> )	Q<0.9
1	A	311/318 (97%)	-0.47	7 (2%) 64 57	42, 66, 105, 134	0
1	B	311/318 (97%)	-0.55	1 (0%) 94 94	41, 65, 92, 105	0
1	C	311/318 (97%)	-0.52	5 (1%) 74 69	40, 62, 100, 132	0
1	D	311/318 (97%)	-0.51	2 (0%) 90 88	37, 64, 102, 131	0
1	E	311/318 (97%)	-0.50	3 (0%) 84 80	40, 64, 100, 120	0
All	All	1555/1590 (97%)	-0.51	18 (1%) 81 76	37, 64, 101, 134	0

The worst 5 of 18 RSRZ outliers are listed below:

Mol	Chain	Res	Type	RSRZ
1	A	57	VAL	3.6
1	C	58	ARG	3.4
1	A	62	ARG	3.4
1	A	58	ARG	3.2
1	A	68	PRO	2.8

### 6.2 Non-standard residues in protein, DNA, RNA chains ⓘ

There are no non-standard protein/DNA/RNA residues in this entry.

### 6.3 Carbohydrates ⓘ

There are no carbohydrates in this entry.

### 6.4 Ligands ⓘ

In the following table, the Atoms column lists the number of modelled atoms in the group and the number defined in the chemical component dictionary. LLDF column lists the quality of electron

density of the group with respect to its neighbouring residues in protein, DNA or RNA chains. The B-factors column lists the minimum, median, 95<sup>th</sup> percentile and maximum values of B factors of atoms in the group. The column labelled 'Q< 0.9' lists the number of atoms with occupancy less than 0.9.

Mol	Type	Chain	Res	Atoms	RSCC	RSR	LLDF	B-factors(Å <sup>2</sup> )	Q<0.9
4	PLC	D	322	9/42	0.51	0.95	26.69	103,103,104,105	0
4	PLC	B	320	28/42	0.70	0.47	14.57	108,112,118,119	0
2	LMT	A	501	14/35	0.48	0.55	13.45	117,122,124,124	0
2	LMT	B	501	14/35	0.54	0.50	13.09	103,108,110,111	0
4	PLC	C	320	28/42	0.78	0.43	11.45	107,111,117,118	0
3	PFL	A	319	13/13	0.82	0.33	10.08	123,131,135,137	0
2	LMT	D	501	14/35	0.63	0.45	9.60	105,110,112,112	0
2	LMT	A	502	35/35	0.80	0.31	8.79	92,97,105,106	0
4	PLC	E	320	28/42	0.73	0.45	8.78	106,110,116,117	0
3	PFL	E	319	13/13	0.78	0.35	7.59	128,134,137,138	0
4	PLC	A	320	28/42	0.72	0.55	7.51	107,111,117,118	0
2	LMT	E	501	14/35	0.58	0.48	7.40	107,112,115,115	0
4	PLC	D	321	28/42	0.80	0.35	6.71	104,108,114,115	0
3	PFL	B	319	13/13	0.93	0.22	5.97	130,135,136,136	0
2	LMT	D	319	14/35	0.73	0.40	5.72	115,119,122,122	0
3	PFL	C	319	13/13	0.88	0.27	4.72	133,137,140,142	0
3	PFL	D	320	13/13	0.81	0.30	4.61	128,132,137,137	0
4	PLC	B	321	9/42	0.76	0.65	-	74,74,76,77	0
4	PLC	E	321	9/42	0.83	0.61	-	71,71,73,74	0
4	PLC	C	321	9/42	0.87	0.72	-	68,68,70,71	0
4	PLC	A	321	9/42	0.75	0.72	-	73,73,74,75	0

## 6.5 Other polymers ⓘ

There are no such residues in this entry.