



# Full wwPDB X-ray Structure Validation Report ⓘ

Feb 1, 2016 – 05:03 AM GMT

PDB ID : 2P8S  
Title : Human dipeptidyl peptidase IV/CD26 in complex with a cyclohexalamine inhibitor  
Authors : Scapin, G.; Biftu, T.  
Deposited on : 2007-03-23  
Resolution : 2.20 Å(reported)

This is a Full wwPDB X-ray Structure Validation Report for a publicly released PDB entry.  
We welcome your comments at [validation@mail.wwpdb.org](mailto:validation@mail.wwpdb.org)  
A user guide is available at  
<http://wwpdb.org/validation/2016/XrayValidationReportHelp>  
with specific help available everywhere you see the ⓘ symbol.

---

The following versions of software and data (see [references ⓘ](#)) were used in the production of this report:

MolProbity : 4.02b-467  
Mogul : 1.7 (RC4), CSD as536be (2015)  
Xtriage (Phenix) : 1.9-1692  
EDS : rb-20026688  
Percentile statistics : 20151230.v01 (using entries in the PDB archive December 30th 2015)  
Refmac : 5.8.0135  
CCP4 : 6.5.0  
Ideal geometry (proteins) : Engh & Huber (2001)  
Ideal geometry (DNA, RNA) : Parkinson et al. (1996)  
Validation Pipeline (wwPDB-VP) : trunk26865

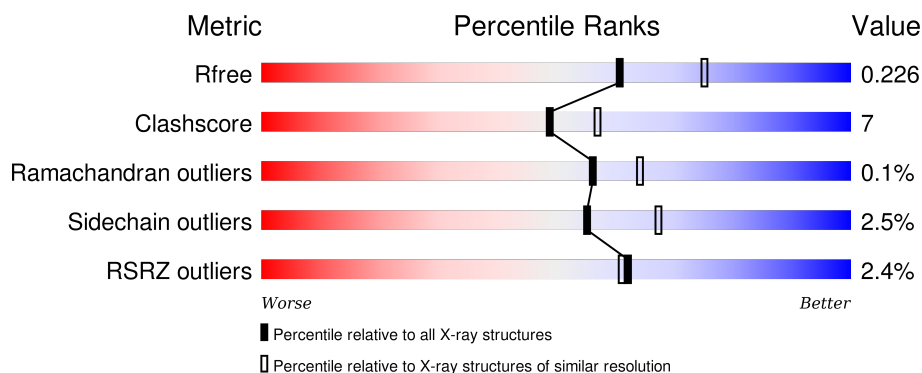
# 1 Overall quality at a glance

The following experimental techniques were used to determine the structure:

## *X-RAY DIFFRACTION*

The reported resolution of this entry is 2.20 Å.

Percentile scores (ranging between 0-100) for global validation metrics of the entry are shown in the following graphic. The table shows the number of entries on which the scores are based.



Metric	Whole archive (#Entries)	Similar resolution (#Entries, resolution range(Å))
$R_{free}$	91344	3774 (2.20-2.20)
Clashscore	102246	4477 (2.20-2.20)
Ramachandran outliers	100387	4404 (2.20-2.20)
Sidechain outliers	100360	4405 (2.20-2.20)
RSRZ outliers	91569	3781 (2.20-2.20)

The table below summarises the geometric issues observed across the polymeric chains and their fit to the electron density. The red, orange, yellow and green segments on the lower bar indicate the fraction of residues that contain outliers for  $\geq 3$ , 2, 1 and 0 types of geometric quality criteria. A grey segment represents the fraction of residues that are not modelled. The numeric value for each fraction is indicated below the corresponding segment, with a dot representing fractions  $\leq 5\%$ . The upper red bar (where present) indicates the fraction of residues that have poor fit to the electron density. The numeric value is given above the bar.

Mol	Chain	Length	Quality of chain
1	A	728	 2% 85% 14% •
1	B	728	 3% 84% 15% •

The following table lists non-polymeric compounds, carbohydrate monomers and non-standard residues in protein, DNA, RNA chains that are outliers for geometric or electron-density-fit criteria:

Mol	Type	Chain	Res	Chirality	Geometry	Clashes	Electron density
2	NAG	A	1085	-	-	-	X
2	NAG	A	1086	X	-	-	-
2	NAG	A	1150	X	-	-	-
2	NAG	A	1219	-	-	-	X
2	NAG	A	1220	-	-	-	X
2	NAG	A	1230	X	-	-	-
2	NAG	A	1321	-	-	-	X
3	NAG	B	2321	-	-	-	X
5	417	A	1001[A]	-	-	-	X
5	417	A	1001[B]	-	-	-	X
5	417	B	1002[A]	-	-	-	X
5	417	B	1002[B]	-	-	-	X

## 2 Entry composition

There are 6 unique types of molecules in this entry. The entry contains 13442 atoms, of which 0 are hydrogens and 0 are deuteriums.

In the tables below, the ZeroOcc column contains the number of atoms modelled with zero occupancy, the AltConf column contains the number of residues with at least one atom in alternate conformation and the Trace column contains the number of residues modelled with at most 2 atoms.

- Molecule 1 is a protein called DIPEPTIDYL PEPTIDASE IV SOLUBLE FORM.

Mol	Chain	Residues	Atoms					ZeroOcc	AltConf	Trace
1	A	728	Total	C	N	O	S	0	5	0
			6000	3846	990	1138	26			
1	B	728	Total	C	N	O	S	0	4	0
			5994	3844	988	1136	26			

There are 2 discrepancies between the modelled and reference sequences:

Chain	Residue	Modelled	Actual	Comment	Reference
A	39	THR	SER	CLONING ARTIFACT	UNP P27487
B	39	THR	SER	CLONING ARTIFACT	UNP P27487

- Molecule 2 is a polymer of unknown type called SUGAR (2-MER).

Mol	Chain	Residues	Atoms				ZeroOcc	AltConf
2	A	2	Total	C	N	O	0	0
			28	16	2	10		
2	A	2	Total	C	N	O	0	0
			28	16	2	10		
2	A	2	Total	C	N	O	0	0
			28	16	2	10		
2	A	2	Total	C	N	O	0	0
			28	16	2	10		
2	B	2	Total	C	N	O	0	0
			28	16	2	10		
2	B	2	Total	C	N	O	0	0
			28	16	2	10		
2	B	2	Total	C	N	O	0	0
			28	16	2	10		

- Molecule 3 is SUGAR (N-ACETYL-D-GLUCOSAMINE) (three-letter code: NAG) (formula:  $C_8H_{15}NO_6$ ).

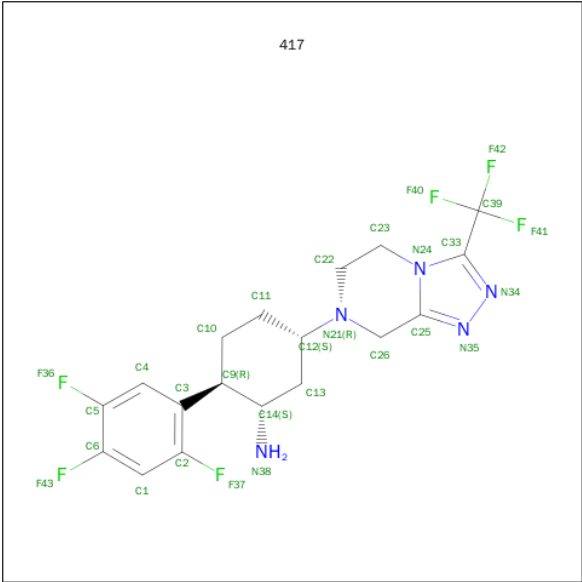


Mol	Chain	Residues	Atoms				ZeroOcc	AltConf
3	A	1	Total	C	N	O	0	0
			14	8	1	5		
3	A	1	Total	C	N	O	0	0
			14	8	1	5		
3	A	1	Total	C	N	O	0	0
			14	8	1	5		
3	B	1	Total	C	N	O	0	0
			14	8	1	5		
3	B	1	Total	C	N	O	0	0
			14	8	1	5		
3	B	1	Total	C	N	O	0	0
			14	8	1	5		

- Molecule 4 is SODIUM ION (three-letter code: NA) (formula: Na).

Mol	Chain	Residues	Atoms		ZeroOcc	AltConf
4	A	1	Total	Na	0	0
			1	1		

- Molecule 5 is (1S,2R,5S)-5-[3-(TRIFLUOROMETHYL)-5,6-DIHYDRO[1,2,4]TRIAZOL O[4,3-A]PYRAZIN-7(8H)-YL]-2-(2,4,5-TRIFLUOROPHENYL)CYCLOHEXANAMINE (three-letter code: 417) (formula:  $C_{18}H_{19}F_6N_5$ ).



Mol	Chain	Residues	Atoms				ZeroOcc	AltConf
5	A	1	Total	C	F	N	0	1
			58	36	12	10		
5	B	1	Total	C	F	N	0	1
			58	36	12	10		

- Molecule 6 is water.

Mol	Chain	Residues	Atoms		ZeroOcc	AltConf
6	A	504	Total	O	0	0
			504	504		
6	B	491	Total	O	0	0
			491	491		

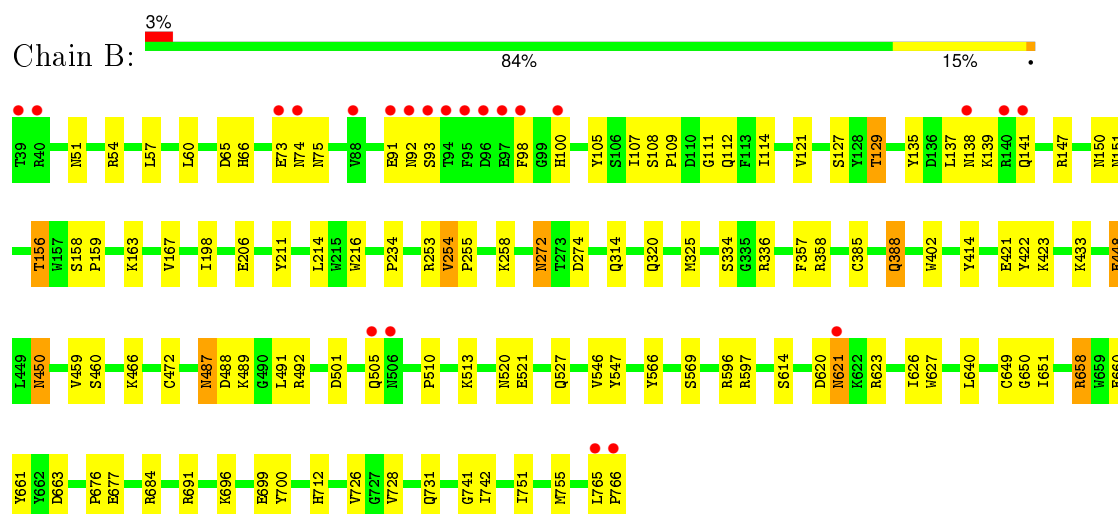
### 3 Residue-property plots

These plots are drawn for all protein, RNA and DNA chains in the entry. The first graphic for a chain summarises the proportions of errors displayed in the second graphic. The second graphic shows the sequence view annotated by issues in geometry and electron density. Residues are color-coded according to the number of geometric quality criteria for which they contain at least one outlier: green = 0, yellow = 1, orange = 2 and red = 3 or more. A red dot above a residue indicates a poor fit to the electron density ( $RSRZ > 2$ ). Stretches of 2 or more consecutive residues without any outlier are shown as a green connector. Residues present in the sample, but not in the model, are shown in grey.

#### • Molecule 1: DIPEPTIDYL PEPTIDASE IV SOLUBLE FORM



#### • Molecule 1: DIPEPTIDYL PEPTIDASE IV SOLUBLE FORM



## 4 Data and refinement statistics

Property	Value	Source
Space group	P 21 21 21	Depositor
Cell constants a, b, c, $\alpha$ , $\beta$ , $\gamma$	118.14Å 126.17Å 137.34Å 90.00° 90.00° 90.00°	Depositor
Resolution (Å)	30.00 – 2.20 46.46 – 2.20	Depositor EDS
% Data completeness (in resolution range)	98.9 (30.00-2.20) 98.8 (46.46-2.20)	Depositor EDS
$R_{merge}$	0.09	Depositor
$R_{sym}$	(Not available)	Depositor
$\langle I/\sigma(I) \rangle$ <sup>1</sup>	3.67 (at 2.20Å)	Xtriage
Refinement program	CNX	Depositor
R, $R_{free}$	0.186 , 0.227 0.185 , 0.226	Depositor DCC
$R_{free}$ test set	5220 reflections (5.32%)	DCC
Wilson B-factor (Å <sup>2</sup> )	27.2	Xtriage
Anisotropy	0.389	Xtriage
Bulk solvent $k_{sol}$ (e/Å <sup>3</sup> ), $B_{sol}$ (Å <sup>2</sup> )	0.34 , 44.6	EDS
Estimated twinning fraction	No twinning to report.	Xtriage
L-test for twinning <sup>2</sup>	$\langle  L  \rangle = 0.49$ , $\langle L^2 \rangle = 0.32$	Xtriage
Outliers	1 of 103448 reflections (0.001%)	Xtriage
$F_o, F_c$ correlation	0.95	EDS
Total number of atoms	13442	wwPDB-VP
Average B, all atoms (Å <sup>2</sup> )	28.0	wwPDB-VP

Xtriage's analysis on translational NCS is as follows: *The largest off-origin peak in the Patterson function is 2.89% of the height of the origin peak. No significant pseudotranslation is detected.*

<sup>1</sup>Intensities estimated from amplitudes.

<sup>2</sup>Theoretical values of  $\langle |L| \rangle$ ,  $\langle L^2 \rangle$  for acentric reflections are 0.5, 0.375 respectively for untwinned datasets, and 0.333, 0.2 for perfectly twinned datasets.



## 5 Model quality

### 5.1 Standard geometry

Bond lengths and bond angles in the following residue types are not validated in this section: NA, 417, NAG

The Z score for a bond length (or angle) is the number of standard deviations the observed value is removed from the expected value. A bond length (or angle) with  $|Z| > 5$  is considered an outlier worth inspection. RMSZ is the root-mean-square of all Z scores of the bond lengths (or angles).

Mol	Chain	Bond lengths		Bond angles	
		RMSZ	# Z  >5	RMSZ	# Z  >5
1	A	0.48	0/6172	0.68	2/8392 (0.0%)
1	B	0.48	0/6166	0.67	1/8386 (0.0%)
All	All	0.48	0/12338	0.67	3/16778 (0.0%)

Chiral center outliers are detected by calculating the chiral volume of a chiral center and verifying if the center is modelled as a planar moiety or with the opposite hand. A planarity outlier is detected by checking planarity of atoms in a peptide group, atoms in a mainchain group or atoms of a sidechain that are expected to be planar.

Mol	Chain	#Chirality outliers	#Planarity outliers
1	A	0	1
1	B	0	1
2	A	3	0
All	All	3	2

There are no bond length outliers.

All (3) bond angle outliers are listed below:

Mol	Chain	Res	Type	Atoms	Z	Observed(°)	Ideal(°)
1	A	319	ILE	N-CA-C	-5.78	95.41	111.00
1	B	388	GLN	N-CA-C	-5.26	96.79	111.00
1	A	300	LEU	N-CA-C	-5.01	97.48	111.00

All (3) chirality outliers are listed below:

Mol	Chain	Res	Type	Atom
2	A	1086	NAG	C1
2	A	1150	NAG	C1
2	A	1230	NAG	C1

All (2) planarity outliers are listed below:

Mol	Chain	Res	Type	Group
1	A	700	TYR	Sidechain
1	B	700	TYR	Sidechain

## 5.2 Too-close contacts

In the following table, the Non-H and H(model) columns list the number of non-hydrogen atoms and hydrogen atoms in the chain respectively. The H(added) column lists the number of hydrogen atoms added and optimized by MolProbity. The Clashes column lists the number of clashes within the asymmetric unit, whereas Symm-Clashes lists symmetry related clashes.

Mol	Chain	Non-H	H(model)	H(added)	Clashes	Symm-Clashes
1	A	6000	0	5704	73	0
1	B	5994	0	5701	90	0
2	A	140	0	125	11	0
2	B	112	0	100	5	0
3	A	42	0	39	3	0
3	B	42	0	39	7	0
4	A	1	0	0	0	0
5	A	58	0	38	0	0
5	B	58	0	38	2	0
6	A	504	0	0	5	0
6	B	491	0	0	9	0
All	All	13442	0	11784	174	0

The all-atom clashscore is defined as the number of clashes found per 1000 atoms (including hydrogen atoms). The all-atom clashscore for this structure is 7.

All (174) close contacts within the same asymmetric unit are listed below, sorted by their clash magnitude.

Atom-1	Atom-2	Interatomic distance (Å)	Clash overlap (Å)
1:B:147:ARG:HE	3:B:2150:NAG:H83	1.17	1.08
1:A:253:ARG:HH21	1:B:253:ARG:HH21	0.95	0.89
1:A:75:ASN:HD21	3:A:1092:NAG:HN2	1.16	0.88
1:A:149:PRO:HA	2:A:1150:NAG:H82	1.56	0.87
2:B:2085:NAG:H4	2:B:2086:NAG:N2	1.93	0.84
1:B:726:VAL:HG23	1:B:728:VAL:HG23	1.61	0.82
1:B:640:LEU:HD11	1:B:650:GLY:HA3	1.62	0.80
1:B:75:ASN:HD21	3:B:2092:NAG:HN2	1.30	0.80
1:A:253:ARG:NH2	1:B:253:ARG:HH21	1.80	0.76

*Continued on next page...*

*Continued from previous page...*

Atom-1	Atom-2	Interatomic distance (Å)	Clash overlap (Å)
1:B:258:LYS:HZ3	1:B:712:HIS:HD2	1.36	0.73
1:A:153:GLN:HE22	1:A:170:ASN:ND2	1.86	0.73
1:B:91:GLU:HG3	1:B:93:SER:H	1.53	0.73
1:A:676:PRO:HG2	1:A:677:GLU:OE2	1.88	0.73
1:B:272:ASN:C	1:B:272:ASN:HD22	1.93	0.72
1:A:179:ASN:H	1:A:179:ASN:HD22	1.38	0.71
1:A:581:ARG:NH1	3:A:1520:NAG:H62	2.06	0.71
1:A:581:ARG:CZ	3:A:1520:NAG:H62	2.22	0.70
1:B:258:LYS:NZ	1:B:712:HIS:HD2	1.89	0.69
1:B:272:ASN:HD21	1:B:274:ASP:HB2	1.57	0.69
1:A:596:ARG:O	1:A:597:ARG:HD3	1.94	0.68
1:B:147:ARG:NE	3:B:2150:NAG:H83	2.02	0.68
1:B:658:ARG:HG2	1:B:661:TYR:CE2	2.27	0.68
1:B:258:LYS:HZ3	1:B:712:HIS:CD2	2.12	0.67
1:B:596:ARG:O	1:B:597:ARG:HD2	1.95	0.67
2:B:2085:NAG:H61	2:B:2086:NAG:C7	2.25	0.67
1:A:77:LEU:HD23	1:A:88:VAL:HA	1.78	0.66
1:B:114:ILE:HG23	1:B:135:TYR:HB3	1.78	0.65
1:A:640:LEU:HD11	1:A:650:GLY:HA3	1.78	0.65
1:A:253:ARG:HH21	1:B:253:ARG:NH2	1.80	0.64
1:B:121:VAL:HB	1:B:129:THR:OG1	1.97	0.64
1:B:620:ASP:OD2	1:B:623:ARG:HD3	1.97	0.64
1:A:471[A]:ARG:HG3	1:A:480:TYR:CE2	2.32	0.64
1:B:75:ASN:ND2	3:B:2092:NAG:HN2	1.96	0.63
1:B:696:LYS:HG3	1:B:728:VAL:HG22	1.80	0.63
1:A:258:LYS:NZ	1:A:712:HIS:HD2	1.96	0.63
1:B:691:ARG:HD2	6:B:2363:HOH:O	1.99	0.63
1:A:139:LYS:HB3	1:A:139:LYS:NZ	2.13	0.62
1:B:272:ASN:ND2	1:B:274:ASP:H	1.97	0.62
1:A:136:ASP:HB3	1:A:139:LYS:HG2	1.81	0.62
1:A:184:ARG:HH11	1:A:187:TRP:HA	1.65	0.62
1:B:114:ILE:CG2	1:B:135:TYR:HB3	2.30	0.62
1:B:75:ASN:HD21	3:B:2092:NAG:C1	2.14	0.61
1:A:65:ASP:OD2	1:A:466:LYS:HB2	2.00	0.61
2:B:2085:NAG:H4	2:B:2086:NAG:HN2	1.64	0.61
1:A:173:TYR:CE2	1:A:184:ARG:HG2	2.36	0.60
1:A:388:GLN:HB3	1:A:391:LYS:HB2	1.83	0.60
1:A:535:ASP:OD1	1:A:538:LYS:HE2	2.02	0.60
1:A:111:GLY:O	1:A:137:LEU:HD12	2.01	0.60
1:B:272:ASN:HD22	1:B:274:ASP:H	1.52	0.58
1:A:435:GLN:NE2	1:A:441:LYS:HD2	2.19	0.58

*Continued on next page...*

*Continued from previous page...*

Atom-1	Atom-2	Interatomic distance (Å)	Clash overlap (Å)
1:A:170:ASN:N	1:A:170:ASN:HD22	2.02	0.57
1:A:179:ASN:N	1:A:179:ASN:HD22	2.02	0.57
2:A:1230:NAG:O7	2:A:1230:NAG:H3	2.04	0.57
2:A:1229:NAG:H62	2:A:1230:NAG:O5	2.05	0.56
1:B:107:ILE:HG22	1:B:108:SER:O	2.06	0.55
1:B:358:ARG:HD2	6:B:2788:HOH:O	2.07	0.55
1:A:69:LEU:HD13	1:A:107:ILE:HD12	1.89	0.54
1:A:248:TYR:CZ	1:B:234:PRO:HB2	2.41	0.54
1:B:676:PRO:HG2	1:B:677:GLU:OE2	2.07	0.53
1:A:388:GLN:CB	1:A:391:LYS:HB2	2.39	0.53
1:A:184:ARG:NH1	1:A:187:TRP:HA	2.23	0.53
1:B:51[A]:ASN:HD21	1:B:54:ARG:HG3	1.74	0.52
1:B:65:ASP:OD2	1:B:466:LYS:HB2	2.09	0.52
1:A:402:TRP:CD2	1:A:421:GLU:HB2	2.45	0.52
1:A:154:TRP:CE2	1:A:212[A]:SER:HB2	2.45	0.52
1:A:726:VAL:HG23	1:A:728:VAL:HG23	1.91	0.52
2:A:1151:NAG:O7	2:A:1151:NAG:H3	2.10	0.51
1:B:731:GLN:NE2	6:B:2470:HOH:O	2.44	0.51
1:B:60:LEU:HD12	1:B:60:LEU:C	2.31	0.51
1:B:501:ASP:O	1:B:505:GLN:HG2	2.10	0.51
1:B:520:ASN:O	1:B:521:GLU:HB2	2.10	0.50
1:A:154:TRP:CE2	1:A:212[B]:SER:HB3	2.46	0.50
2:B:2085:NAG:C4	2:B:2086:NAG:N2	2.71	0.50
2:A:1321:NAG:H61	2:A:1322:NAG:O5	2.11	0.49
1:A:622:LYS:HE2	6:A:9341:HOH:O	2.11	0.49
1:A:54:ARG:HG3	6:A:9368:HOH:O	2.11	0.49
1:B:150:ASN:O	1:B:151:ASN:HB2	2.12	0.49
1:B:487:ASN:HD22	1:B:487:ASN:C	2.14	0.49
1:B:109:PRO:HG2	1:B:158:SER:O	2.12	0.49
1:A:149:PRO:HA	2:A:1150:NAG:C8	2.36	0.49
1:B:129:THR:HB	6:B:2795:HOH:O	2.11	0.49
1:A:98:PHE:CE2	1:A:100:HIS:HB2	2.48	0.49
1:B:272:ASN:C	1:B:272:ASN:ND2	2.65	0.48
1:B:658:ARG:HG3	1:B:658:ARG:O	2.12	0.48
1:B:75:ASN:HD21	1:B:92:ASN:ND2	2.11	0.48
1:B:487:ASN:HD22	1:B:488:ASP:N	2.11	0.48
1:A:510:PRO:HD3	1:A:569:SER:HB2	1.95	0.48
1:B:487:ASN:ND2	1:B:489:LYS:H	2.11	0.48
1:B:357:PHE:CD1	5:B:1002[B]:417:H222	2.49	0.48
1:A:512:LYS:HE3	1:A:527:GLN:OE1	2.13	0.48
1:B:334:SER:O	1:B:336:ARG:HG2	2.14	0.48

*Continued on next page...*

*Continued from previous page...*

Atom-1	Atom-2	Interatomic distance (Å)	Clash overlap (Å)
1:B:614:SER:HB3	1:B:621[A]:ASN:ND2	2.29	0.48
5:B:1002[B]:417:H221	6:B:2812:HOH:O	2.13	0.48
1:B:658:ARG:HD3	1:B:660:GLU:HB2	1.95	0.47
1:A:153:GLN:HE22	1:A:170:ASN:HD21	1.60	0.47
1:B:658:ARG:HG2	1:B:661:TYR:CD2	2.50	0.47
1:A:109:PRO:HD2	1:A:161:GLY:O	2.14	0.47
1:B:159:PRO:HD3	1:B:216:TRP:CB	2.44	0.47
1:B:111:GLY:O	1:B:137:LEU:HD12	2.15	0.47
1:A:139:LYS:HZ3	1:A:139:LYS:HB3	1.78	0.47
1:A:319:ILE:HG12	6:A:9191:HOH:O	2.14	0.47
2:A:1150:NAG:O3	2:A:1151:NAG:N2	2.48	0.47
1:A:159:PRO:HD3	1:A:216:TRP:CB	2.44	0.47
1:B:510:PRO:HD3	1:B:569:SER:HB2	1.96	0.46
2:B:2219:NAG:H82	6:B:2777:HOH:O	2.15	0.46
1:A:224:ALA:HB1	1:A:268:PHE:CZ	2.50	0.46
1:B:597:ARG:HG2	6:B:2751:HOH:O	2.16	0.46
1:B:139:LYS:O	1:B:141:GLN:HG3	2.15	0.46
1:B:614:SER:HB3	1:B:621[A]:ASN:HD21	1.81	0.46
1:A:626:ILE:HG23	1:A:636:THR:HG23	1.98	0.46
1:A:310:ARG:HA	1:A:328:CYS:O	2.15	0.46
1:B:254:VAL:HA	1:B:255:PRO:HD3	1.88	0.45
1:B:147:ARG:HE	3:B:2150:NAG:C8	2.06	0.45
1:B:129:THR:CB	6:B:2795:HOH:O	2.63	0.45
1:B:272:ASN:ND2	1:B:274:ASP:N	2.64	0.45
1:A:137:LEU:O	1:A:140:ARG:HD2	2.16	0.45
1:B:448:GLU:HG3	6:B:2741:HOH:O	2.16	0.45
1:B:402:TRP:CD2	1:B:421:GLU:HB2	2.53	0.44
1:A:459:VAL:HG22	1:A:460:SER:N	2.32	0.44
1:A:143:ILE:CD1	1:A:178:PRO:HB2	2.47	0.44
1:B:459:VAL:HG22	1:B:460:SER:N	2.33	0.44
1:A:258:LYS:HZ1	1:A:712:HIS:HD2	1.62	0.44
1:A:626:ILE:O	1:A:650:GLY:HA2	2.18	0.43
2:A:1229:NAG:H62	2:A:1230:NAG:C1	2.48	0.43
1:B:167:VAL:HG21	1:B:198:ILE:HG23	1.98	0.43
1:A:196:ASN:OD1	1:A:227:GLN:HG3	2.18	0.43
2:A:1150:NAG:H4	2:A:1151:NAG:H2	1.78	0.43
1:B:60:LEU:HD12	1:B:60:LEU:O	2.17	0.43
1:A:136:ASP:CB	1:A:139:LYS:HG2	2.47	0.43
2:A:1322:NAG:O7	2:A:1322:NAG:C1	2.65	0.43
1:A:756:SER:O	1:A:760:LYS:HG3	2.18	0.43
2:A:1229:NAG:C6	2:A:1230:NAG:C1	2.97	0.43

*Continued on next page...*

*Continued from previous page...*

Atom-1	Atom-2	Interatomic distance (Å)	Clash overlap (Å)
1:B:765:LEU:HA	1:B:766:PRO:HD3	1.93	0.43
1:B:450:ASN:C	1:B:450:ASN:HD22	2.21	0.43
1:A:291:ALA:O	1:A:295:ILE:HG23	2.19	0.43
1:B:156:THR:HG21	1:B:214:LEU:HD11	2.01	0.43
1:A:415:LEU:HD23	1:A:415:LEU:C	2.39	0.43
1:B:741:GLY:O	1:B:742:ILE:C	2.57	0.43
1:A:765:LEU:HA	1:A:766:PRO:HD3	1.94	0.43
1:B:751:ILE:O	1:B:755:MET:HG3	2.19	0.43
1:A:299:TYR:CE1	1:A:665:VAL:HG22	2.54	0.43
1:A:105:TYR:HB2	1:A:114:ILE:HD11	2.02	0.42
1:B:422:TYR:CE2	1:B:423:LYS:HE2	2.54	0.42
1:A:139:LYS:HG3	1:A:141:GLN:HB2	2.00	0.42
1:A:184:ARG:HD2	1:A:187:TRP:CD2	2.55	0.42
1:B:206:GLU:OE2	1:B:663:ASP:OD2	2.37	0.42
1:A:403:GLU:OE1	1:A:585:TYR:HA	2.20	0.42
1:B:491:LEU:O	1:B:492:ARG:HB3	2.20	0.42
1:A:41:LYS:HE2	1:A:53:TYR:OH	2.20	0.42
1:A:461:PHE:CD2	1:A:468:TYR:HB3	2.55	0.42
1:A:378:GLU:HG2	6:A:9386:HOH:O	2.19	0.41
1:B:626:ILE:O	1:B:650:GLY:HA2	2.20	0.41
1:B:627:TRP:HB2	1:B:651:ILE:HB	2.02	0.41
1:A:69:LEU:CD1	1:A:107:ILE:HD12	2.50	0.41
1:A:60:LEU:HD12	1:A:60:LEU:C	2.41	0.41
1:B:73:GLU:O	1:B:74:ASN:HB2	2.20	0.41
1:B:127:SER:HB3	1:B:211:TYR:CD1	2.56	0.41
1:A:534:PHE:HZ	1:A:618:PHE:CG	2.38	0.41
1:B:54:ARG:HB2	1:B:54:ARG:HE	1.76	0.41
1:B:520:ASN:O	1:B:521:GLU:CB	2.69	0.41
1:B:546[A]:VAL:HG22	1:B:547:TYR:N	2.36	0.41
1:A:693:GLU:HB2	6:A:9265:HOH:O	2.21	0.41
1:B:105:TYR:HB2	1:B:114:ILE:HD11	2.03	0.41
1:A:677:GLU:CD	1:A:677:GLU:H	2.24	0.41
1:B:684:ARG:HA	1:B:684:ARG:HD3	1.97	0.41
1:A:669:ARG:HD2	1:A:670:TYR:CZ	2.56	0.41
1:B:112:GLN:HG2	1:B:138:ASN:HD21	1.86	0.41
1:B:513:LYS:O	1:B:527:GLN:HA	2.22	0.40
1:B:98:PHE:CD2	1:B:100:HIS:HB2	2.56	0.40
1:B:314:GLN:HG2	1:B:325:MET:HB2	2.04	0.40
1:B:649:CYS:HB3	1:B:699:GLU:HB2	2.04	0.40
1:B:158:SER:HB3	1:B:163:LYS:HB2	2.02	0.40
1:B:414:TYR:CD2	1:B:433:LYS:HE2	2.57	0.40

*Continued on next page...*

*Continued from previous page...*

Atom-1	Atom-2	Interatomic distance (Å)	Clash overlap (Å)
1:B:75:ASN:ND2	3:B:2092:NAG:C1	2.83	0.40

There are no symmetry-related clashes.

## 5.3 Torsion angles [i](#)

### 5.3.1 Protein backbone [i](#)

In the following table, the Percentiles column shows the percent Ramachandran outliers of the chain as a percentile score with respect to all X-ray entries followed by that with respect to entries of similar resolution.

The Analysed column shows the number of residues for which the backbone conformation was analysed, and the total number of residues.

Mol	Chain	Analysed	Favoured	Allowed	Outliers	Percentiles	
1	A	731/728 (100%)	709 (97%)	22 (3%)	0	100	100
1	B	730/728 (100%)	699 (96%)	30 (4%)	1 (0%)	56	64
All	All	1461/1456 (100%)	1408 (96%)	52 (4%)	1 (0%)	56	64

All (1) Ramachandran outliers are listed below:

Mol	Chain	Res	Type
1	B	320	GLN

### 5.3.2 Protein sidechains [i](#)

In the following table, the Percentiles column shows the percent sidechain outliers of the chain as a percentile score with respect to all X-ray entries followed by that with respect to entries of similar resolution.

The Analysed column shows the number of residues for which the sidechain conformation was analysed, and the total number of residues.

Mol	Chain	Analysed	Rotameric	Outliers	Percentiles	
1	A	658/653 (101%)	640 (97%)	18 (3%)	52	64
1	B	657/653 (101%)	641 (98%)	16 (2%)	57	69
All	All	1315/1306 (101%)	1281 (97%)	34 (3%)	55	66

All (34) residues with a non-rotameric sidechain are listed below:

Mol	Chain	Res	Type
1	A	39	THR
1	A	54	ARG
1	A	139	LYS
1	A	147	ARG
1	A	170	ASN
1	A	179	ASN
1	A	184	ARG
1	A	230	ASP
1	A	326	ASP
1	A	344	GLN
1	A	379	GLU
1	A	385	CYS
1	A	388	GLN
1	A	448	GLU
1	A	472	CYS
1	A	520	ASN
1	A	566	TYR
1	A	597	ARG
1	B	57	LEU
1	B	66	HIS
1	B	129	THR
1	B	156	THR
1	B	254	VAL
1	B	272	ASN
1	B	385	CYS
1	B	388	GLN
1	B	448	GLU
1	B	450	ASN
1	B	472	CYS
1	B	487	ASN
1	B	566	TYR
1	B	621[A]	ASN
1	B	621[B]	ASN
1	B	658	ARG

Some sidechains can be flipped to improve hydrogen bonding and reduce clashes. All (23) such sidechains are listed below:

Mol	Chain	Res	Type
1	A	75	ASN
1	A	123	GLN
1	A	169	ASN

*Continued on next page...*



*Continued from previous page...*

Mol	Chain	Res	Type
1	A	170	ASN
1	A	179	ASN
1	A	435	GLN
1	A	505	GLN
1	A	572	ASN
1	A	712	HIS
1	B	74	ASN
1	B	75	ASN
1	B	138	ASN
1	B	141	GLN
1	B	169	ASN
1	B	272	ASN
1	B	345	HIS
1	B	450	ASN
1	B	487	ASN
1	B	533	HIS
1	B	572	ASN
1	B	685	ASN
1	B	712	HIS
1	B	731	GLN

### 5.3.3 RNA ⓘ

There are no RNA molecules in this entry.

## 5.4 Non-standard residues in protein, DNA, RNA chains ⓘ

There are no non-standard protein/DNA/RNA residues in this entry.

## 5.5 Carbohydrates ⓘ

18 carbohydrates are modelled in this entry.

In the following table, the Counts columns list the number of bonds (or angles) for which Mogul statistics could be retrieved, the number of bonds (or angles) that are observed in the model and the number of bonds (or angles) that are defined in the chemical component dictionary. The Link column lists molecule types, if any, to which the group is linked. The Z score for a bond length (or angle) is the number of standard deviations the observed value is removed from the expected value. A bond length (or angle) with  $|Z| > 2$  is considered an outlier worth inspection. RMSZ is the root-mean-square of all Z scores of the bond lengths (or angles).

Mol	Type	Chain	Res	Link	Bond lengths			Bond angles		
					Counts	RMSZ	# Z  > 2	Counts	RMSZ	# Z  > 2
2	NAG	A	1085	1,2	14,14,15	0.91	1 (7%)	15,19,21	1.49	3 (20%)
2	NAG	A	1086	2	14,14,15	0.81	0	15,19,21	0.75	1 (6%)
2	NAG	A	1150	1,2	14,14,15	0.95	1 (7%)	15,19,21	0.82	0
2	NAG	A	1151	2	14,14,15	0.94	1 (7%)	15,19,21	0.89	0
2	NAG	A	1219	1,2	14,14,15	0.62	0	15,19,21	0.83	1 (6%)
2	NAG	A	1220	2	14,14,15	0.76	0	15,19,21	0.77	0
2	NAG	A	1229	1,2	14,14,15	0.79	0	15,19,21	0.80	1 (6%)
2	NAG	A	1230	2	14,14,15	0.83	1 (7%)	15,19,21	0.77	1 (6%)
2	NAG	A	1321	1,2	14,14,15	0.77	0	15,19,21	0.97	1 (6%)
2	NAG	A	1322	2	14,14,15	0.63	0	15,19,21	0.63	0
2	NAG	B	2085	1,2	14,14,15	0.66	0	15,19,21	0.67	0
2	NAG	B	2086	2	14,14,15	0.93	1 (7%)	15,19,21	0.65	0
2	NAG	B	2219	1,2	14,14,15	0.52	0	15,19,21	0.60	0
2	NAG	B	2220	2	14,14,15	0.67	0	15,19,21	0.65	1 (6%)
2	NAG	B	2229	1,2	14,14,15	0.63	0	15,19,21	0.75	0
2	NAG	B	2230	2	14,14,15	0.62	0	15,19,21	0.68	0
2	NAG	B	2281	1,2	14,14,15	0.48	0	15,19,21	1.04	1 (6%)
2	NAG	B	2282	2	14,14,15	0.61	0	15,19,21	0.80	1 (6%)

In the following table, the Chirals column lists the number of chiral outliers, the number of chiral centers analysed, the number of these observed in the model and the number defined in the chemical component dictionary. Similar counts are reported in the Torsion and Rings columns. '-' means no outliers of that kind were identified.

Mol	Type	Chain	Res	Link	Chirals	Torsions	Rings
2	NAG	A	1085	1,2	-	0/6/23/26	0/1/1/1
2	NAG	A	1086	2	1/1/5/7	0/6/23/26	0/1/1/1
2	NAG	A	1150	1,2	1/1/5/7	0/6/23/26	0/1/1/1
2	NAG	A	1151	2	-	0/6/23/26	0/1/1/1
2	NAG	A	1219	1,2	-	0/6/23/26	0/1/1/1
2	NAG	A	1220	2	-	0/6/23/26	0/1/1/1
2	NAG	A	1229	1,2	-	0/6/23/26	0/1/1/1
2	NAG	A	1230	2	1/1/5/7	0/6/23/26	0/1/1/1
2	NAG	A	1321	1,2	-	0/6/23/26	0/1/1/1
2	NAG	A	1322	2	-	0/6/23/26	0/1/1/1
2	NAG	B	2085	1,2	-	0/6/23/26	0/1/1/1
2	NAG	B	2086	2	-	0/6/23/26	0/1/1/1
2	NAG	B	2219	1,2	-	0/6/23/26	0/1/1/1
2	NAG	B	2220	2	-	0/6/23/26	0/1/1/1
2	NAG	B	2229	1,2	-	0/6/23/26	0/1/1/1

*Continued on next page...*

*Continued from previous page...*

Mol	Type	Chain	Res	Link	Chirals	Torsions	Rings
2	NAG	B	2230	2	-	0/6/23/26	0/1/1/1
2	NAG	B	2281	1,2	-	0/6/23/26	0/1/1/1
2	NAG	B	2282	2	-	0/6/23/26	0/1/1/1

All (5) bond length outliers are listed below:

Mol	Chain	Res	Type	Atoms	Z	Observed(Å)	Ideal(Å)
2	A	1230	NAG	C1-C2	2.26	1.55	1.52
2	A	1151	NAG	C1-C2	2.46	1.55	1.52
2	B	2086	NAG	C1-C2	2.62	1.56	1.52
2	A	1085	NAG	C1-C2	2.68	1.56	1.52
2	A	1150	NAG	C1-C2	3.02	1.56	1.52

All (11) bond angle outliers are listed below:

Mol	Chain	Res	Type	Atoms	Z	Observed(°)	Ideal(°)
2	A	1085	NAG	C4-C3-C2	-3.78	105.36	111.23
2	B	2281	NAG	C2-N2-C7	-3.18	118.95	123.04
2	A	1321	NAG	C2-N2-C7	-2.74	119.52	123.04
2	A	1219	NAG	C2-N2-C7	-2.57	119.73	123.04
2	B	2282	NAG	C2-N2-C7	-2.36	120.01	123.04
2	A	1229	NAG	C2-N2-C7	-2.11	120.33	123.04
2	A	1230	NAG	C2-N2-C7	-2.10	120.34	123.04
2	A	1085	NAG	C3-C4-C5	-2.05	106.61	110.20
2	B	2220	NAG	C2-N2-C7	-2.02	120.44	123.04
2	A	1086	NAG	C2-N2-C7	-2.01	120.45	123.04
2	A	1085	NAG	O4-C4-C3	2.21	115.31	110.34

All (3) chirality outliers are listed below:

Mol	Chain	Res	Type	Atom
2	A	1230	NAG	C1
2	A	1150	NAG	C1
2	A	1086	NAG	C1

There are no torsion outliers.

There are no ring outliers.

9 monomers are involved in 16 short contacts:

Mol	Chain	Res	Type	Clashes	Symm-Clashes
2	A	1150	NAG	4	0

*Continued on next page...*

*Continued from previous page...*

Mol	Chain	Res	Type	Clashes	Symm-Clashes
2	A	1151	NAG	3	0
2	A	1229	NAG	3	0
2	A	1230	NAG	4	0
2	A	1321	NAG	1	0
2	A	1322	NAG	2	0
2	B	2085	NAG	4	0
2	B	2086	NAG	4	0
2	B	2219	NAG	1	0

## 5.6 Ligand geometry ⓘ

Of 11 ligands modelled in this entry, 1 is monoatomic - leaving 10 for Mogul analysis.

In the following table, the Counts columns list the number of bonds (or angles) for which Mogul statistics could be retrieved, the number of bonds (or angles) that are observed in the model and the number of bonds (or angles) that are defined in the chemical component dictionary. The Link column lists molecule types, if any, to which the group is linked. The Z score for a bond length (or angle) is the number of standard deviations the observed value is removed from the expected value. A bond length (or angle) with  $|Z| > 2$  is considered an outlier worth inspection. RMSZ is the root-mean-square of all Z scores of the bond lengths (or angles).

Mol	Type	Chain	Res	Link	Bond lengths			Bond angles		
					Counts	RMSZ	# $ Z  > 2$	Counts	RMSZ	# $ Z  > 2$
5	417	A	1001[A]	-	30,32,32	1.80	6 (20%)	36,49,49	1.53	5 (13%)
5	417	A	1001[B]	-	30,32,32	1.81	5 (16%)	36,49,49	1.58	4 (11%)
3	NAG	A	1092	1	14,14,15	1.00	1 (7%)	15,19,21	0.64	0
3	NAG	A	1281	1	14,14,15	0.78	0	15,19,21	0.93	1 (6%)
3	NAG	A	1520	1	14,14,15	0.81	1 (7%)	15,19,21	0.66	0
5	417	B	1002[A]	-	30,32,32	1.93	9 (30%)	36,49,49	1.54	4 (11%)
5	417	B	1002[B]	-	30,32,32	1.97	10 (33%)	36,49,49	1.51	4 (11%)
3	NAG	B	2092	1	14,14,15	0.78	0	15,19,21	0.53	0
3	NAG	B	2150	1	14,14,15	0.71	0	15,19,21	0.83	1 (6%)
3	NAG	B	2321	1	14,14,15	0.63	0	15,19,21	1.03	1 (6%)

In the following table, the Chirals column lists the number of chiral outliers, the number of chiral centers analysed, the number of these observed in the model and the number defined in the chemical component dictionary. Similar counts are reported in the Torsion and Rings columns. '-' means no outliers of that kind were identified.

Mol	Type	Chain	Res	Link	Chirals	Torsions	Rings
5	417	A	1001[A]	-	-	0/14/36/36	0/3/4/4
5	417	A	1001[B]	-	-	0/14/36/36	0/3/4/4
3	NAG	A	1092	1	-	0/6/23/26	0/1/1/1
3	NAG	A	1281	1	-	0/6/23/26	0/1/1/1
3	NAG	A	1520	1	-	0/6/23/26	0/1/1/1
5	417	B	1002[A]	-	-	0/14/36/36	0/3/4/4
5	417	B	1002[B]	-	-	0/14/36/36	0/3/4/4
3	NAG	B	2092	1	-	0/6/23/26	0/1/1/1
3	NAG	B	2150	1	-	0/6/23/26	0/1/1/1
3	NAG	B	2321	1	-	0/6/23/26	0/1/1/1

All (32) bond length outliers are listed below:

Mol	Chain	Res	Type	Atoms	Z	Observed(Å)	Ideal(Å)
5	B	1002[A]	417	N35-N34	-6.24	1.25	1.37
5	A	1001[B]	417	N35-N34	-6.15	1.25	1.37
5	A	1001[A]	417	N35-N34	-6.06	1.25	1.37
5	B	1002[B]	417	N35-N34	-5.70	1.26	1.37
3	A	1520	NAG	C1-C2	2.01	1.55	1.52
5	B	1002[B]	417	C26-C25	2.02	1.55	1.51
5	B	1002[A]	417	C1-C6	2.04	1.41	1.37
5	B	1002[B]	417	C4-C5	2.15	1.41	1.37
5	A	1001[A]	417	C39-C33	2.19	1.53	1.51
5	B	1002[B]	417	C13-C12	2.26	1.57	1.53
5	A	1001[A]	417	C4-C3	2.26	1.43	1.39
5	B	1002[B]	417	C1-C6	2.34	1.41	1.37
5	B	1002[A]	417	C1-C2	2.44	1.41	1.37
5	A	1001[B]	417	C4-C3	2.44	1.44	1.39
5	B	1002[A]	417	C39-C33	2.45	1.53	1.51
5	A	1001[B]	417	C4-C5	2.45	1.41	1.37
5	B	1002[A]	417	C4-C3	2.48	1.44	1.39
5	B	1002[A]	417	C4-C5	2.53	1.42	1.37
5	A	1001[A]	417	C4-C5	2.57	1.42	1.37
5	B	1002[A]	417	C10-C9	2.64	1.57	1.53
5	B	1002[B]	417	C39-C33	2.73	1.54	1.51
5	B	1002[B]	417	C4-C3	2.74	1.44	1.39
5	A	1001[A]	417	C3-C2	2.74	1.42	1.38
5	B	1002[B]	417	C1-C2	2.77	1.42	1.37
5	A	1001[B]	417	C3-C2	2.90	1.43	1.38
5	B	1002[A]	417	C3-C2	2.98	1.43	1.38
3	A	1092	NAG	C1-C2	3.04	1.56	1.52
5	A	1001[B]	417	C26-N21	3.05	1.51	1.47
5	B	1002[B]	417	C3-C2	3.11	1.43	1.38

*Continued on next page...*

*Continued from previous page...*

Mol	Chain	Res	Type	Atoms	Z	Observed(Å)	Ideal(Å)
5	A	1001[A]	417	C26-N21	3.75	1.52	1.47
5	B	1002[B]	417	C26-N21	3.89	1.52	1.47
5	B	1002[A]	417	C26-N21	3.97	1.52	1.47

All (20) bond angle outliers are listed below:

Mol	Chain	Res	Type	Atoms	Z	Observed(°)	Ideal(°)
5	A	1001[B]	417	F42-C39-C33	-4.98	105.97	111.32
5	B	1002[A]	417	F42-C39-C33	-3.83	107.21	111.32
5	A	1001[A]	417	F42-C39-C33	-3.61	107.44	111.32
5	B	1002[A]	417	F41-C39-C33	-3.58	107.47	111.32
5	B	1002[B]	417	F41-C39-C33	-3.50	107.56	111.32
5	B	1002[B]	417	F42-C39-C33	-3.33	107.75	111.32
5	A	1001[A]	417	F41-C39-C33	-3.32	107.76	111.32
3	A	1281	NAG	C2-N2-C7	-2.68	119.60	123.04
3	B	2321	NAG	C2-N2-C7	-2.46	119.87	123.04
5	A	1001[B]	417	F41-C39-C33	-2.40	108.75	111.32
3	B	2150	NAG	C2-N2-C7	-2.11	120.33	123.04
5	A	1001[A]	417	C39-C33-N24	2.61	126.77	124.19
5	A	1001[A]	417	C39-C33-N34	2.85	125.13	122.36
5	A	1001[B]	417	C39-C33-N34	3.42	125.68	122.36
5	B	1002[A]	417	C39-C33-N34	3.59	125.84	122.36
5	B	1002[B]	417	C23-N24-C33	4.26	131.20	125.73
5	B	1002[B]	417	C39-C33-N34	4.26	126.49	122.36
5	B	1002[A]	417	C23-N24-C33	4.60	131.64	125.73
5	A	1001[A]	417	C23-N24-C33	4.64	131.70	125.73
5	A	1001[B]	417	C23-N24-C33	4.65	131.70	125.73

There are no chirality outliers.

There are no torsion outliers.

There are no ring outliers.

5 monomers are involved in 12 short contacts:

Mol	Chain	Res	Type	Clashes	Symm-Clashes
3	A	1092	NAG	1	0
3	A	1520	NAG	2	0
5	B	1002[B]	417	2	0
3	B	2092	NAG	4	0
3	B	2150	NAG	3	0

## 5.7 Other polymers

There are no such residues in this entry.

## 5.8 Polymer linkage issues

There are no chain breaks in this entry.

## 6 Fit of model and data ⓘ

### 6.1 Protein, DNA and RNA chains ⓘ

In the following table, the column labelled ‘#RSRZ> 2’ contains the number (and percentage) of RSRZ outliers, followed by percent RSRZ outliers for the chain as percentile scores relative to all X-ray entries and entries of similar resolution. The OWAB column contains the minimum, median, 95<sup>th</sup> percentile and maximum values of the occupancy-weighted average B-factor per residue. The column labelled ‘Q< 0.9’ lists the number of (and percentage) of residues with an average occupancy less than 0.9.

Mol	Chain	Analysed	<RSRZ>	#RSRZ>2	OWAB(Å <sup>2</sup> )	Q<0.9
1	A	728/728 (100%)	-0.21	13 (1%) 71 70	15, 25, 46, 60	0
1	B	728/728 (100%)	-0.17	22 (3%) 54 53	16, 26, 45, 59	0
All	All	1456/1456 (100%)	-0.19	35 (2%) 62 61	15, 26, 46, 60	0

All (35) RSRZ outliers are listed below:

Mol	Chain	Res	Type	RSRZ
1	A	39	THR	6.6
1	A	766	PRO	4.8
1	B	766	PRO	4.6
1	A	97	GLU	4.4
1	B	98	PHE	4.1
1	B	39	THR	4.0
1	B	96	ASP	4.0
1	A	74	ASN	3.6
1	B	91	GLU	3.6
1	A	73	GLU	3.5
1	B	74	ASN	3.2
1	B	73	GLU	3.2
1	B	138	ASN	3.1
1	A	138	ASN	3.1
1	B	92	ASN	2.9
1	B	93	SER	2.9
1	B	88	VAL	2.9
1	A	99	GLY	2.9
1	B	97	GLU	2.8
1	A	92	ASN	2.8
1	B	100	HIS	2.8
1	A	96	ASP	2.8
1	A	279	VAL	2.7
1	A	93	SER	2.7

*Continued on next page...*



*Continued from previous page...*

Mol	Chain	Res	Type	RSRZ
1	B	40	ARG	2.5
1	A	98	PHE	2.4
1	B	621[A]	ASN	2.4
1	B	505	GLN	2.4
1	B	765	LEU	2.3
1	B	95	PHE	2.3
1	B	506	ASN	2.2
1	A	40	ARG	2.1
1	B	94	THR	2.1
1	B	140	ARG	2.1
1	B	141	GLN	2.0

## 6.2 Non-standard residues in protein, DNA, RNA chains [i](#)

There are no non-standard protein/DNA/RNA residues in this entry.

## 6.3 Carbohydrates [i](#)

In the following table, the Atoms column lists the number of modelled atoms in the group and the number defined in the chemical component dictionary. LLDF column lists the quality of electron density of the group with respect to its neighbouring residues in protein, DNA or RNA chains. The B-factors column lists the minimum, median, 95<sup>th</sup> percentile and maximum values of B factors of atoms in the group. The column labelled 'Q < 0.9' lists the number of atoms with occupancy less than 0.9.

Mol	Type	Chain	Res	Atoms	RSCC	RSR	LLDF	B-factors(Å <sup>2</sup> )	Q<0.9
2	NAG	A	1321	14/15	0.74	0.27	8.59	43,48,49,53	0
2	NAG	A	1085	14/15	0.83	0.19	5.76	43,46,53,54	0
2	NAG	A	1219	14/15	0.90	0.17	3.79	40,44,47,47	0
2	NAG	A	1220	14/15	0.82	0.22	2.19	50,52,54,56	0
2	NAG	B	2219	14/15	0.94	0.11	1.57	33,39,43,43	0
2	NAG	B	2085	14/15	0.85	0.19	1.06	46,51,55,56	0
2	NAG	B	2220	14/15	0.90	0.17	0.92	44,46,49,49	0
2	NAG	B	2281	14/15	0.94	0.11	0.87	31,33,40,42	0
2	NAG	A	1229	14/15	0.93	0.13	0.79	34,37,43,47	0
2	NAG	B	2229	14/15	0.95	0.10	-0.29	29,31,37,40	0
2	NAG	B	2086	14/15	0.47	0.42	-	59,61,63,63	0
2	NAG	A	1086	14/15	0.57	0.32	-	57,59,60,60	0
2	NAG	A	1322	14/15	0.53	0.38	-	54,56,59,59	0
2	NAG	B	2282	14/15	0.75	0.20	-	46,48,50,50	0
2	NAG	B	2230	14/15	0.90	0.25	-	43,45,49,49	0

*Continued on next page...*

*Continued from previous page...*

Mol	Type	Chain	Res	Atoms	RSCC	RSR	LLDF	B-factors( $\text{\AA}^2$ )	Q<0.9
2	NAG	A	1230	14/15	0.72	0.32	-	52,55,58,58	0
2	NAG	A	1151	14/15	0.54	0.41	-	56,60,62,63	0
2	NAG	A	1150	14/15	0.77	0.38	-	52,55,56,58	0

## 6.4 Ligands

In the following table, the Atoms column lists the number of modelled atoms in the group and the number defined in the chemical component dictionary. LLDF column lists the quality of electron density of the group with respect to its neighbouring residues in protein, DNA or RNA chains. The B-factors column lists the minimum, median, 95<sup>th</sup> percentile and maximum values of B factors of atoms in the group. The column labelled 'Q< 0.9' lists the number of atoms with occupancy less than 0.9.

Mol	Type	Chain	Res	Atoms	RSCC	RSR	LLDF	B-factors( $\text{\AA}^2$ )	Q<0.9
5	417	A	1001[A]	29/29	0.90	0.25	4.83	16,20,30,31	29
5	417	A	1001[B]	29/29	0.90	0.25	4.72	21,23,33,35	29
5	417	B	1002[B]	29/29	0.89	0.26	4.10	23,25,30,31	29
5	417	B	1002[A]	29/29	0.89	0.26	3.95	18,23,32,33	29
3	NAG	B	2321	14/15	0.77	0.23	3.27	43,46,48,49	0
4	NA	A	9001	1/1	0.94	0.07	-3.68	31,31,31,31	0
3	NAG	B	2150	14/15	0.58	0.56	-	58,60,64,64	0
3	NAG	A	1281	14/15	0.78	0.18	-	44,45,47,47	0
3	NAG	A	1520	14/15	0.64	0.41	-	56,58,61,62	0
3	NAG	A	1092	14/15	0.69	0.47	-	62,64,65,66	0
3	NAG	B	2092	14/15	0.69	0.42	-	58,59,61,62	0

## 6.5 Other polymers

There are no such residues in this entry.