



# wwPDB X-ray Structure Validation Summary Report ⓘ

Feb 1, 2016 – 05:04 AM GMT

PDB ID : 2P9L  
Title : Crystal Structure of bovine Arp2/3 complex  
Authors : Nolen, B.J.; Pollard, T.D.  
Deposited on : 2007-03-26  
Resolution : 2.65 Å(reported)

This is a wwPDB X-ray Structure Validation Summary Report for a publicly released PDB entry.  
We welcome your comments at [validation@mail.wwpdb.org](mailto:validation@mail.wwpdb.org)  
A user guide is available at  
<http://wwpdb.org/validation/2016/XrayValidationReportHelp>  
with specific help available everywhere you see the ⓘ symbol.

---

The following versions of software and data (see [references ⓘ](#)) were used in the production of this report:

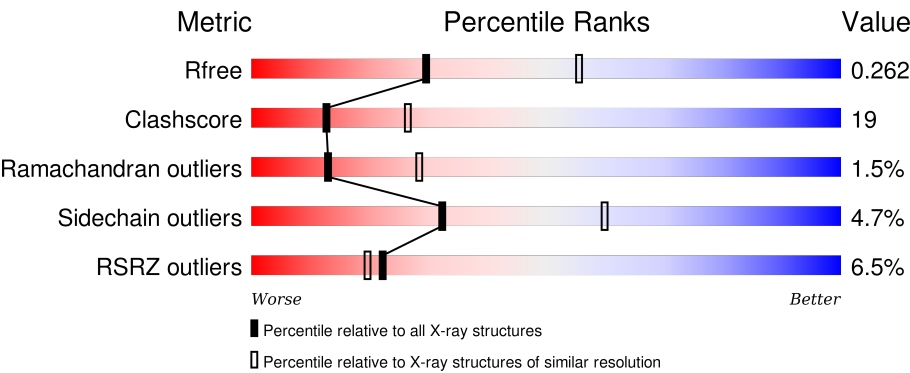
MolProbity : 4.02b-467  
Mogul : 1.7 (RC4), CSD as536be (2015)  
Xtriage (Phenix) : 1.9-1692  
EDS : rb-20026688  
Percentile statistics : 20151230.v01 (using entries in the PDB archive December 30th 2015)  
Refmac : 5.8.0135  
CCP4 : 6.5.0  
Ideal geometry (proteins) : Engh & Huber (2001)  
Ideal geometry (DNA, RNA) : Parkinson et al. (1996)  
Validation Pipeline (wwPDB-VP) : trunk26865

# 1 Overall quality at a glance i

The following experimental techniques were used to determine the structure:  
*X-RAY DIFFRACTION*

The reported resolution of this entry is 2.65 Å.

Percentile scores (ranging between 0-100) for global validation metrics of the entry are shown in the following graphic. The table shows the number of entries on which the scores are based.



Metric	Whole archive (#Entries)	Similar resolution (#Entries, resolution range(Å))
$R_{free}$	91344	3152 (2.70-2.62)
Clashscore	102246	3524 (2.70-2.62)
Ramachandran outliers	100387	3469 (2.70-2.62)
Sidechain outliers	100360	3469 (2.70-2.62)
RSRZ outliers	91569	3161 (2.70-2.62)

The table below summarises the geometric issues observed across the polymeric chains and their fit to the electron density. The red, orange, yellow and green segments on the lower bar indicate the fraction of residues that contain outliers for  $\geq 3$ , 2, 1 and 0 types of geometric quality criteria. A grey segment represents the fraction of residues that are not modelled. The numeric value for each fraction is indicated below the corresponding segment, with a dot representing fractions  $\leq 5\%$ . The upper red bar (where present) indicates the fraction of residues that have poor fit to the electron density. The numeric value is given above the bar.

Mol	Chain	Length	Quality of chain
1	A	418	<div><div>6%</div><div>64%28%5%</div></div>
2	B	394	<div><div>7%</div><div>30%16%49%</div></div>
3	C	372	<div><div>2%</div><div>63%27%8%</div></div>
4	D	300	<div><div>2%</div><div>66%24%8%</div></div>
5	E	178	<div><div>13%</div><div>48%43%5%</div></div>

Continued on next page...

Continued from previous page...

Mol	Chain	Length	Quality of chain
6	F	168	<div><div><div>%</div><div><div></div><div>68%</div><div>29%</div><div>...</div></div></div></div>
7	G	151	<div><div><div>13%</div><div><div></div><div>59%</div><div>29%</div><div>•</div><div>9%</div></div></div></div>

## 2 Entry composition

There are 8 unique types of molecules in this entry. The entry contains 13500 atoms, of which 0 are hydrogens and 0 are deuteriums.

In the tables below, the ZeroOcc column contains the number of atoms modelled with zero occupancy, the AltConf column contains the number of residues with at least one atom in alternate conformation and the Trace column contains the number of residues modelled with at most 2 atoms.

- Molecule 1 is a protein called Actin-like protein 3.

Mol	Chain	Residues	Atoms					ZeroOcc	AltConf	Trace
1	A	399	Total	C	N	O	S	0	0	0
			3179	2043	526	595	15			

- Molecule 2 is a protein called Actin-like protein 2.

Mol	Chain	Residues	Atoms					ZeroOcc	AltConf	Trace
2	B	201	Total	C	N	O	S	0	0	0
			1523	972	263	284	4			

- Molecule 3 is a protein called Actin-related protein 2/3 complex subunit 1B.

Mol	Chain	Residues	Atoms					ZeroOcc	AltConf	Trace
3	C	341	Total	C	N	O	S	0	0	0
			2648	1680	464	485	19			

There is a discrepancy between the modelled and reference sequences:

Chain	Residue	Modelled	Actual	Comment	Reference
C	58	VAL	ILE	CONFLICT	UNP Q58CQ2

- Molecule 4 is a protein called Actin-related protein 2/3 complex subunit 2.

Mol	Chain	Residues	Atoms					ZeroOcc	AltConf	Trace
4	D	277	Total	C	N	O	S	0	0	0
			2237	1422	389	418	8			

- Molecule 5 is a protein called Actin-related protein 2/3 complex subunit 3.

Mol	Chain	Residues	Atoms					ZeroOcc	AltConf	Trace
5	E	173	Total	C	N	O	S	0	0	0
			1404	900	235	260	9			

- Molecule 6 is a protein called Actin-related protein 2/3 complex subunit 4.

Mol	Chain	Residues	Atoms					ZeroOcc	AltConf	Trace
6	F	166	Total	C	N	O	S	0	0	0
			1360	869	238	244	9			

- Molecule 7 is a protein called Actin-related protein 2/3 complex subunit 5.

Mol	Chain	Residues	Atoms					ZeroOcc	AltConf	Trace
7	G	137	Total	C	N	O	S	0	0	0
			1026	644	175	204	3			

There are 2 discrepancies between the modelled and reference sequences:

Chain	Residue	Modelled	Actual	Comment	Reference
G	17	ASP	GLY	CONFLICT	UNP Q3SYX9
G	28	ASP	GLU	CONFLICT	UNP Q3SYX9

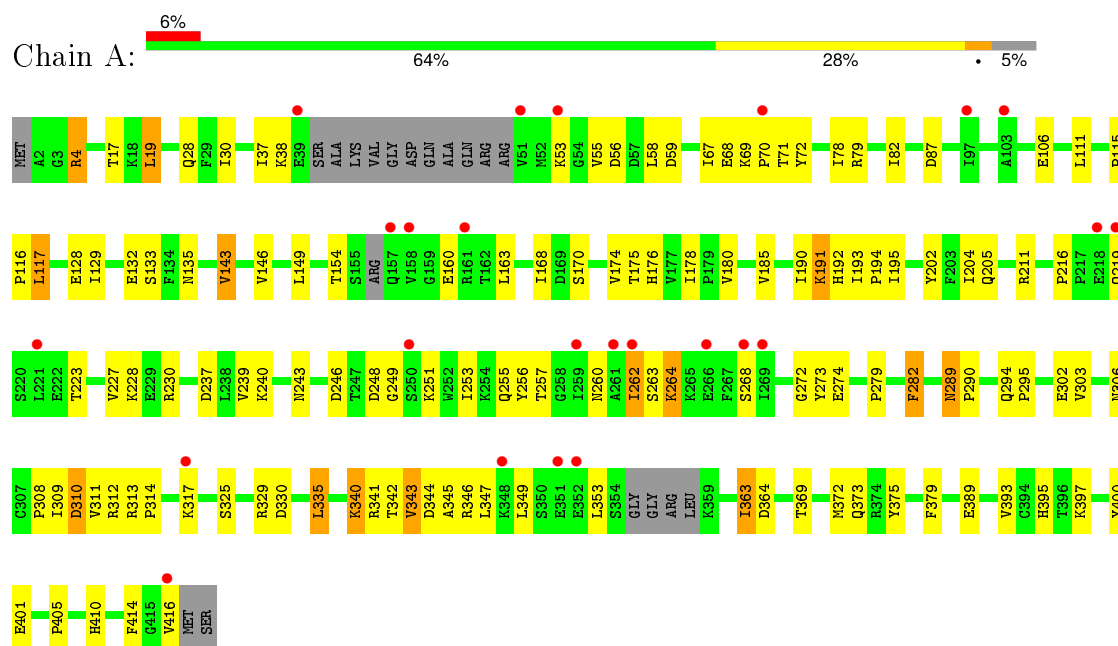
- Molecule 8 is water.

Mol	Chain	Residues	Atoms		ZeroOcc	AltConf
8	A	27	Total	O	0	0
			27	27		
8	B	6	Total	O	0	0
			6	6		
8	C	39	Total	O	0	0
			39	39		
8	D	24	Total	O	0	0
			24	24		
8	E	1	Total	O	0	0
			1	1		
8	F	25	Total	O	0	0
			25	25		
8	G	1	Total	O	0	0
			1	1		

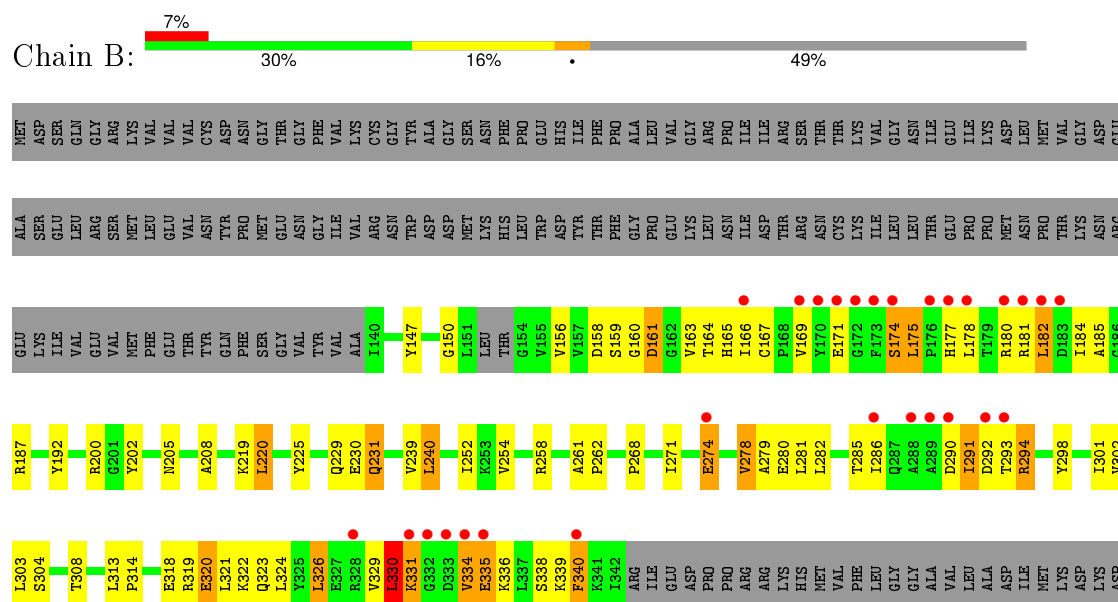
### 3 Residue-property plots

These plots are drawn for all protein, RNA and DNA chains in the entry. The first graphic for a chain summarises the proportions of errors displayed in the second graphic. The second graphic shows the sequence view annotated by issues in geometry and electron density. Residues are color-coded according to the number of geometric quality criteria for which they contain at least one outlier: green = 0, yellow = 1, orange = 2 and red = 3 or more. A red dot above a residue indicates a poor fit to the electron density ( $\text{RSRZ} > 2$ ). Stretches of 2 or more consecutive residues without any outlier are shown as a green connector. Residues present in the sample, but not in the model, are shown in grey.

#### • Molecule 1: Actin-like protein 3

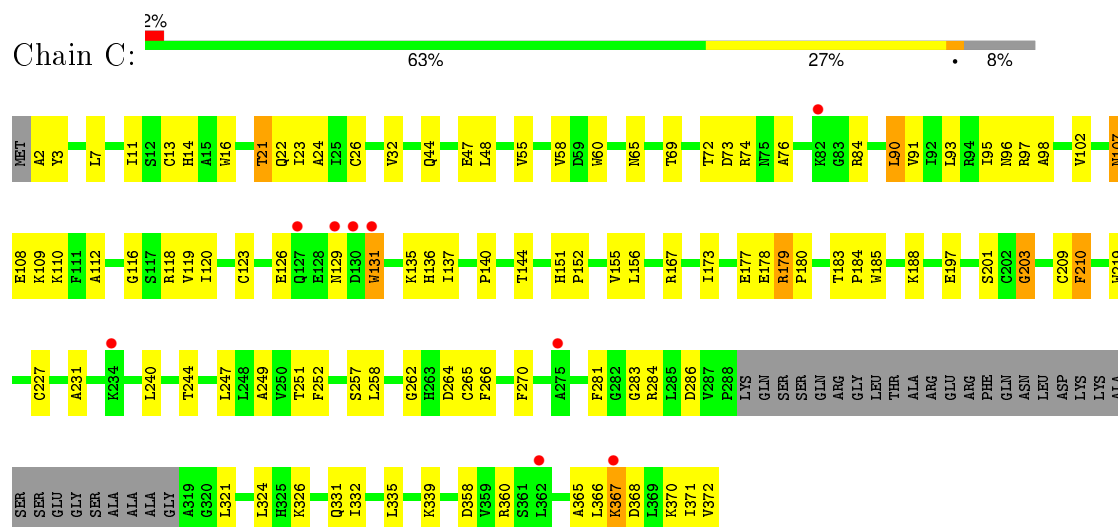


#### • Molecule 2: Actin-like protein 2

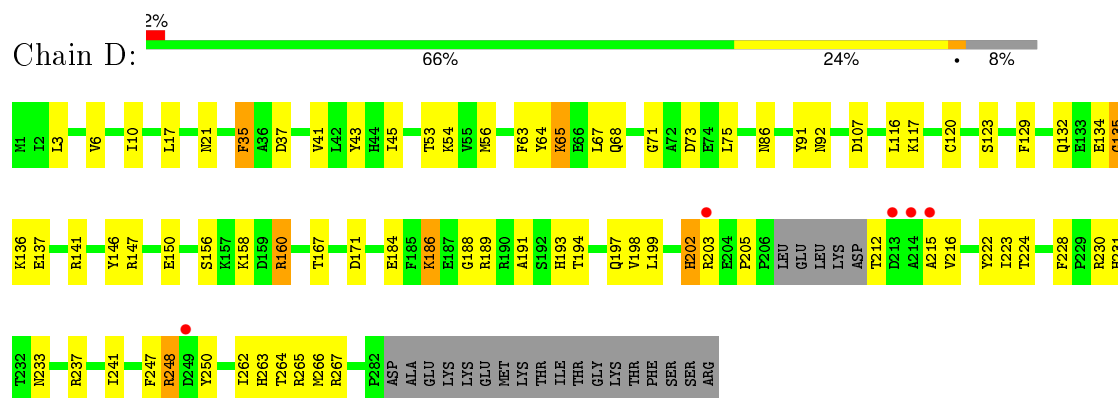


ASN  
PHE  
TRP  
MET  
THR  
ARG  
GLN  
GLU  
TYR  
GLN  
GLU  
LYS  
GLY  
VAL  
ARG  
VAL  
LEU  
LEU  
LYS  
LEU  
VAL  
THR  
VAL  
ARG

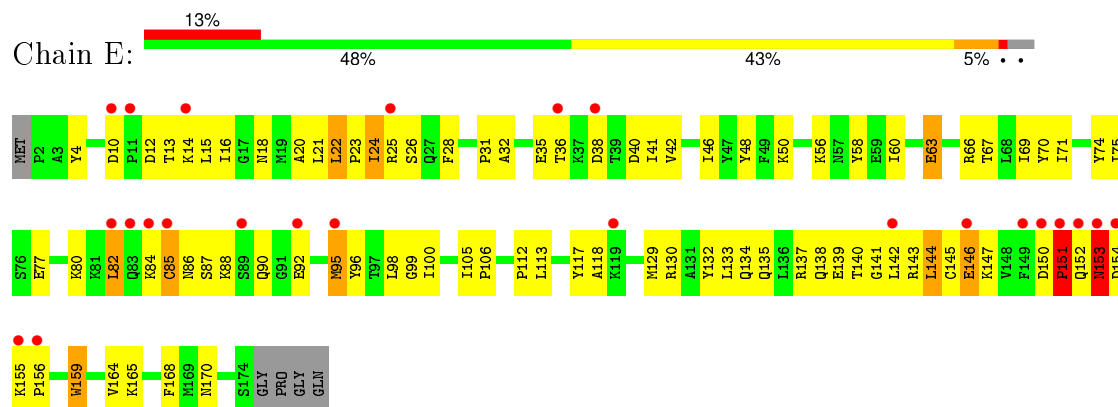
• Molecule 3: Actin-related protein 2/3 complex subunit 1B



• Molecule 4: Actin-related protein 2/3 complex subunit 2

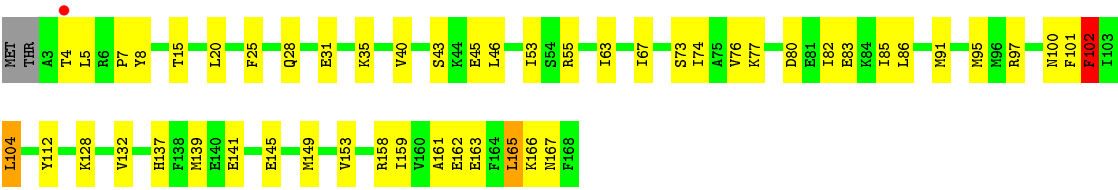


• Molecule 5: Actin-related protein 2/3 complex subunit 3

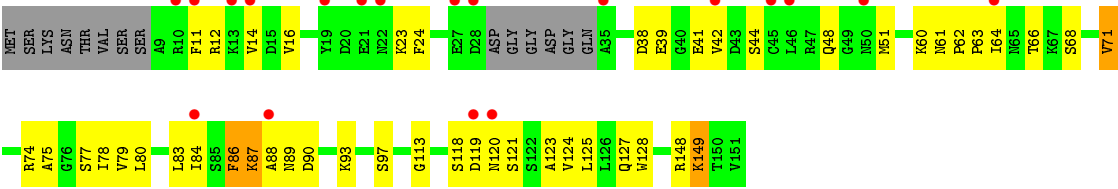


• Molecule 6: Actin-related protein 2/3 complex subunit 4





● Molecule 7: Actin-related protein 2/3 complex subunit 5





## 4 Data and refinement statistics

Property	Value	Source
Space group	P 21 21 21	Depositor
Cell constants a, b, c, $\alpha$ , $\beta$ , $\gamma$	111.06Å 128.06Å 204.17Å 90.00° 90.00° 90.00°	Depositor
Resolution (Å)	30.00 – 2.65 45.58 – 2.65	Depositor EDS
% Data completeness (in resolution range)	89.8 (30.00-2.65) 89.6 (45.58-2.65)	Depositor EDS
$R_{merge}$	0.12	Depositor
$R_{sym}$	(Not available)	Depositor
$\langle I/\sigma(I) \rangle$ <sup>1</sup>	2.60 (at 2.65Å)	Xtriage
Refinement program	CNS	Depositor
R, $R_{free}$	0.223 , 0.266 0.220 , 0.262	Depositor DCC
$R_{free}$ test set	3852 reflections (5.04%)	DCC
Wilson B-factor (Å <sup>2</sup> )	49.4	Xtriage
Anisotropy	0.430	Xtriage
Bulk solvent $k_{sol}$ (e/Å <sup>3</sup> ), $B_{sol}$ (Å <sup>2</sup> )	0.38 , 64.8	EDS
Estimated twinning fraction	No twinning to report.	Xtriage
L-test for twinning <sup>2</sup>	$\langle  L  \rangle = 0.48$ , $\langle L^2 \rangle = 0.32$	Xtriage
Outliers	0 of 81649 reflections	Xtriage
$F_o, F_c$ correlation	0.93	EDS
Total number of atoms	13500	wwPDB-VP
Average B, all atoms (Å <sup>2</sup> )	54.0	wwPDB-VP

Xtriage's analysis on translational NCS is as follows: *The largest off-origin peak in the Patterson function is 3.43% of the height of the origin peak. No significant pseudotranslation is detected.*

<sup>1</sup>Intensities estimated from amplitudes.

<sup>2</sup>Theoretical values of  $\langle |L| \rangle$ ,  $\langle L^2 \rangle$  for acentric reflections are 0.5, 0.375 respectively for untwinned datasets, and 0.333, 0.2 for perfectly twinned datasets.

## 5 Model quality [i](#)

### 5.1 Standard geometry [i](#)

The Z score for a bond length (or angle) is the number of standard deviations the observed value is removed from the expected value. A bond length (or angle) with  $|Z| > 5$  is considered an outlier worth inspection. RMSZ is the root-mean-square of all Z scores of the bond lengths (or angles).

Mol	Chain	Bond lengths		Bond angles	
		RMSZ	$\# Z  > 5$	RMSZ	$\# Z  > 5$
1	A	0.38	0/3259	0.61	0/4425
2	B	0.35	0/1548	0.62	0/2099
3	C	0.38	0/2717	0.67	1/3688 (0.0%)
4	D	0.38	0/2285	0.61	0/3084
5	E	0.34	0/1437	0.62	0/1938
6	F	0.40	0/1382	0.63	0/1853
7	G	0.32	0/1038	0.53	0/1400
All	All	0.37	0/13666	0.62	1/18487 (0.0%)

There are no bond length outliers.

All (1) bond angle outliers are listed below:

Mol	Chain	Res	Type	Atoms	Z	Observed( $^{\circ}$ )	Ideal( $^{\circ}$ )
3	C	11	ILE	N-CA-C	-6.47	93.54	111.00

There are no chirality outliers.

There are no planarity outliers.

### 5.2 Too-close contacts [i](#)

In the following table, the Non-H and H(model) columns list the number of non-hydrogen atoms and hydrogen atoms in the chain respectively. The H(added) column lists the number of hydrogen atoms added and optimized by MolProbity. The Clashes column lists the number of clashes within the asymmetric unit, whereas Symm-Clashes lists symmetry related clashes.

Mol	Chain	Non-H	H(model)	H(added)	Clashes	Symm-Clashes
1	A	3179	0	3107	113	0
2	B	1523	0	1487	76	0
3	C	2648	0	2602	90	0
4	D	2237	0	2202	68	0
5	E	1404	0	1406	100	0

*Continued on next page...*

*Continued from previous page...*

Mol	Chain	Non-H	H(model)	H(added)	Clashes	Symm-Clashes
6	F	1360	0	1399	47	0
7	G	1026	0	1019	56	0
8	A	27	0	0	0	0
8	B	6	0	0	0	0
8	C	39	0	0	2	0
8	D	24	0	0	2	0
8	E	1	0	0	0	0
8	F	25	0	0	0	0
8	G	1	0	0	0	0
All	All	13500	0	13222	512	0

The all-atom clashscore is defined as the number of clashes found per 1000 atoms (including hydrogen atoms). The all-atom clashscore for this structure is 19.

The worst 5 of 512 close contacts within the same asymmetric unit are listed below, sorted by their clash magnitude.

Atom-1	Atom-2	Interatomic distance (Å)	Clash overlap (Å)
6:F:4:THR:HG23	6:F:55:ARG:HE	1.28	0.96
5:E:25:ARG:HG3	5:E:35:GLU:HB3	1.48	0.94
3:C:284:ARG:HD3	3:C:286:ASP:O	1.67	0.94
7:G:87:LYS:H	7:G:87:LYS:HE3	1.33	0.94
2:B:291:ILE:HG22	2:B:292:ASP:H	1.34	0.93

There are no symmetry-related clashes.

## 5.3 Torsion angles [i](#)

### 5.3.1 Protein backbone [i](#)

In the following table, the Percentiles column shows the percent Ramachandran outliers of the chain as a percentile score with respect to all X-ray entries followed by that with respect to entries of similar resolution.

The Analysed column shows the number of residues for which the backbone conformation was analysed, and the total number of residues.

Mol	Chain	Analysed	Favoured	Allowed	Outliers	Percentiles
1	A	391/418 (94%)	356 (91%)	29 (7%)	6 (2%)	13 28
2	B	197/394 (50%)	159 (81%)	29 (15%)	9 (5%)	3 5

*Continued on next page...*

*Continued from previous page...*

Mol	Chain	Analysed	Favoured	Allowed	Outliers	Percentiles	
3	C	337/372 (91%)	319 (95%)	16 (5%)	2 (1%)	30	54
4	D	273/300 (91%)	253 (93%)	18 (7%)	2 (1%)	26	51
5	E	171/178 (96%)	149 (87%)	19 (11%)	3 (2%)	11	23
6	F	164/168 (98%)	156 (95%)	7 (4%)	1 (1%)	30	54
7	G	133/151 (88%)	120 (90%)	11 (8%)	2 (2%)	13	28
All	All	1666/1981 (84%)	1512 (91%)	129 (8%)	25 (2%)	13	28

5 of 25 Ramachandran outliers are listed below:

Mol	Chain	Res	Type
1	A	273	TYR
2	B	174	SER
2	B	278	VAL
2	B	291	ILE
2	B	331	LYS

### 5.3.2 Protein sidechains ⓘ

In the following table, the Percentiles column shows the percent sidechain outliers of the chain as a percentile score with respect to all X-ray entries followed by that with respect to entries of similar resolution.

The Analysed column shows the number of residues for which the sidechain conformation was analysed, and the total number of residues.

Mol	Chain	Analysed	Rotameric	Outliers	Percentiles	
1	A	346/363 (95%)	331 (96%)	15 (4%)	35	63
2	B	154/345 (45%)	139 (90%)	15 (10%)	10	21
3	C	290/313 (93%)	281 (97%)	9 (3%)	47	75
4	D	243/264 (92%)	233 (96%)	10 (4%)	37	66
5	E	155/159 (98%)	145 (94%)	10 (6%)	21	43
6	F	152/155 (98%)	149 (98%)	3 (2%)	63	86
7	G	108/124 (87%)	102 (94%)	6 (6%)	26	50
All	All	1448/1723 (84%)	1380 (95%)	68 (5%)	32	60

5 of 68 residues with a non-rotameric sidechain are listed below:

Mol	Chain	Res	Type
3	C	21	THR
3	C	370	LYS
7	G	39	GLU
3	C	90	LEU
3	C	140	PRO

Some sidechains can be flipped to improve hydrogen bonding and reduce clashes. 5 of 40 such sidechains are listed below:

Mol	Chain	Res	Type
3	C	44	GLN
4	D	21	ASN
7	G	48	GLN
3	C	107	ASN
4	D	26	ASN

### 5.3.3 RNA [i](#)

There are no RNA molecules in this entry.

## 5.4 Non-standard residues in protein, DNA, RNA chains [i](#)

There are no non-standard protein/DNA/RNA residues in this entry.

## 5.5 Carbohydrates [i](#)

There are no carbohydrates in this entry.

## 5.6 Ligand geometry [i](#)

There are no ligands in this entry.

## 5.7 Other polymers [i](#)

There are no such residues in this entry.

## 5.8 Polymer linkage issues [i](#)

There are no chain breaks in this entry.

## 6 Fit of model and data [i](#)

### 6.1 Protein, DNA and RNA chains [i](#)

In the following table, the column labelled ‘#RSRZ> 2’ contains the number (and percentage) of RSRZ outliers, followed by percent RSRZ outliers for the chain as percentile scores relative to all X-ray entries and entries of similar resolution. The OWAB column contains the minimum, median, 95<sup>th</sup> percentile and maximum values of the occupancy-weighted average B-factor per residue. The column labelled ‘Q< 0.9’ lists the number of (and percentage) of residues with an average occupancy less than 0.9.

Mol	Chain	Analysed	<RSRZ>	#RSRZ>2	OWAB(Å <sup>2</sup> )	Q<0.9
1	A	399/418 (95%)	0.30	24 (6%) 25 23	25, 50, 88, 106	0
2	B	201/394 (51%)	0.52	28 (13%) 4 2	33, 59, 95, 102	0
3	C	341/372 (91%)	0.08	9 (2%) 59 58	28, 41, 70, 97	0
4	D	277/300 (92%)	0.17	5 (1%) 71 70	26, 45, 74, 97	0
5	E	173/178 (97%)	0.65	24 (13%) 4 2	44, 69, 101, 111	0
6	F	166/168 (98%)	-0.13	1 (0%) 90 91	27, 41, 54, 77	0
7	G	137/151 (90%)	0.67	19 (13%) 4 2	35, 79, 99, 103	0
All	All	1694/1981 (85%)	0.28	110 (6%) 22 20	25, 49, 93, 111	0

The worst 5 of 110 RSRZ outliers are listed below:

Mol	Chain	Res	Type	RSRZ
2	B	178	LEU	6.3
3	C	127	GLN	6.1
5	E	154	ASP	5.6
7	G	50	ASN	5.6
2	B	289	ALA	5.1

### 6.2 Non-standard residues in protein, DNA, RNA chains [i](#)

There are no non-standard protein/DNA/RNA residues in this entry.

### 6.3 Carbohydrates [i](#)

There are no carbohydrates in this entry.

## 6.4 Ligands

There are no ligands in this entry.

## 6.5 Other polymers

There are no such residues in this entry.