



# Full wwPDB X-ray Structure Validation Report ⓘ

Feb 1, 2016 – 07:33 PM GMT

PDB ID : 4P90  
Title : Crystal structure of the kinase domain of human PAK1 in complex with compound 15  
Authors : Ferguson, A.D.  
Deposited on : 2014-04-01  
Resolution : 2.49 Å(reported)

This is a Full wwPDB X-ray Structure Validation Report for a publicly released PDB entry.  
We welcome your comments at [validation@mail.wwpdb.org](mailto:validation@mail.wwpdb.org)  
A user guide is available at  
<http://wwpdb.org/validation/2016/XrayValidationReportHelp>  
with specific help available everywhere you see the ⓘ symbol.

---

The following versions of software and data (see [references ⓘ](#)) were used in the production of this report:

MolProbity : 4.02b-467  
Mogul : 1.7 (RC4), CSD as536be (2015)  
Xtriage (Phenix) : 1.9-1692  
EDS : rb-20026688  
Percentile statistics : 20151230.v01 (using entries in the PDB archive December 30th 2015)  
Refmac : 5.8.0135  
CCP4 : 6.5.0  
Ideal geometry (proteins) : Engh & Huber (2001)  
Ideal geometry (DNA, RNA) : Parkinson et al. (1996)  
Validation Pipeline (wwPDB-VP) : trunk26865

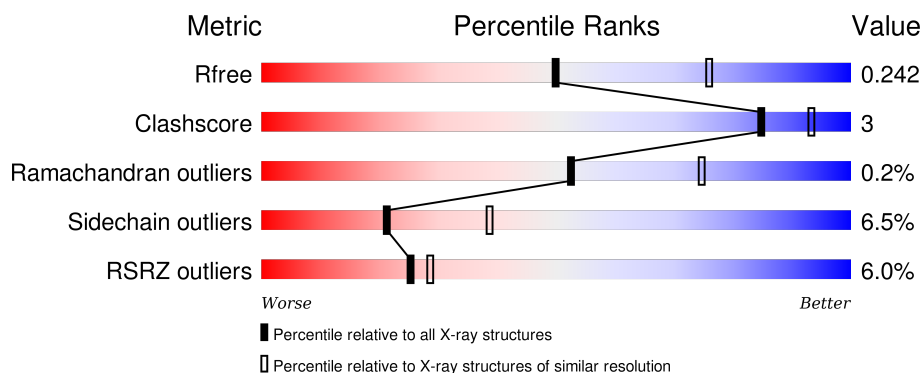
# 1 Overall quality at a glance

The following experimental techniques were used to determine the structure:

## *X-RAY DIFFRACTION*

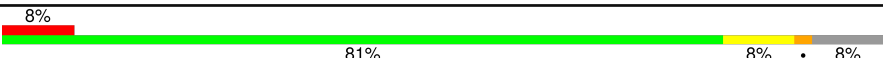

The reported resolution of this entry is 2.49 Å.

Percentile scores (ranging between 0-100) for global validation metrics of the entry are shown in the following graphic. The table shows the number of entries on which the scores are based.



Metric	Whole archive (#Entries)	Similar resolution (#Entries, resolution range(Å))
$R_{free}$	91344	3553 (2.50-2.50)
Clashscore	102246	4242 (2.50-2.50)
Ramachandran outliers	100387	4156 (2.50-2.50)
Sidechain outliers	100360	4158 (2.50-2.50)
RSRZ outliers	91569	3562 (2.50-2.50)

The table below summarises the geometric issues observed across the polymeric chains and their fit to the electron density. The red, orange, yellow and green segments on the lower bar indicate the fraction of residues that contain outliers for  $\geq 3$ , 2, 1 and 0 types of geometric quality criteria. A grey segment represents the fraction of residues that are not modelled. The numeric value for each fraction is indicated below the corresponding segment, with a dot representing fractions  $\leq 5\%$ . The upper red bar (where present) indicates the fraction of residues that have poor fit to the electron density. The numeric value is given above the bar.

Mol	Chain	Length	Quality of chain
1	A	297	
1	B	297	

## 2 Entry composition [i](#)

There are 3 unique types of molecules in this entry. The entry contains 4292 atoms, of which 0 are hydrogens and 0 are deuteriums.

In the tables below, the ZeroOcc column contains the number of atoms modelled with zero occupancy, the AltConf column contains the number of residues with at least one atom in alternate conformation and the Trace column contains the number of residues modelled with at most 2 atoms.

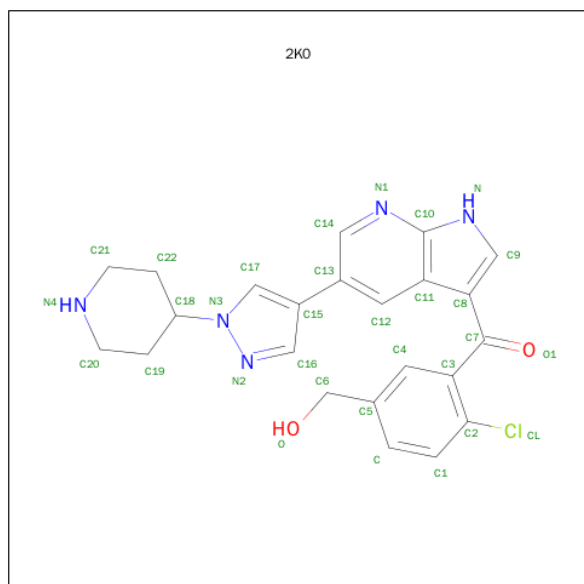
- Molecule 1 is a protein called Serine/threonine-protein kinase PAK 1.

Mol	Chain	Residues	Atoms					ZeroOcc	AltConf	Trace
1	A	272	Total	C	N	O	S	0	0	0
			2139	1363	356	404	16			
1	B	262	Total	C	N	O	S	0	0	0
			2048	1300	344	389	15			

There are 6 discrepancies between the modelled and reference sequences:

Chain	Residue	Modelled	Actual	Comment	Reference
A	389	ASN	ASP	engineered mutation	UNP Q13153
A	423	GLU	THR	engineered mutation	UNP Q13153
A	503	ASP	GLU	engineered mutation	UNP Q13153
B	389	ASN	ASP	engineered mutation	UNP Q13153
B	423	GLU	THR	engineered mutation	UNP Q13153
B	503	ASP	GLU	engineered mutation	UNP Q13153

- Molecule 2 is [2-chloro-5-(hydroxymethyl)phenyl]{5-[1-(piperidin-4-yl)-1H-pyrazol-4-yl]-1H-pyrrolo[2,3-b]pyridin-3-yl}methanone (three-letter code: 2K0) (formula: C<sub>23</sub>H<sub>22</sub>ClN<sub>5</sub>O<sub>2</sub>).



Mol	Chain	Residues	Atoms					ZeroOcc	AltConf
2	A	1	Total	C	Cl	N	O	0	0
			31	23	1	5	2		
2	B	1	Total	C	Cl	N	O	0	0
			31	23	1	5	2		

- Molecule 3 is water.

Mol	Chain	Residues	Atoms		ZeroOcc	AltConf
3	A	11	Total	O	0	0
			11	11		
3	B	32	Total	O	0	0
			32	32		



- Molecule 1: Serine/threonine-protein kinase PAK 1



## 4 Data and refinement statistics

Property	Value	Source
Space group	P 1 21 1	Depositor
Cell constants a, b, c, $\alpha$ , $\beta$ , $\gamma$	62.40Å 83.36Å 66.02Å 90.00° 105.04° 90.00°	Depositor
Resolution (Å)	50.64 – 2.49 48.84 – 2.49	Depositor EDS
% Data completeness (in resolution range)	97.0 (50.64-2.49) 97.4 (48.84-2.49)	Depositor EDS
$R_{merge}$	0.04	Depositor
$R_{sym}$	(Not available)	Depositor
$\langle I/\sigma(I) \rangle$ <sup>1</sup>	1.59 (at 2.48Å)	Xtriage
Refinement program	BUSTER 2.11.5	Depositor
R, $R_{free}$	0.208 , 0.225 0.223 , 0.242	Depositor DCC
$R_{free}$ test set	1147 reflections (5.42%)	DCC
Wilson B-factor (Å <sup>2</sup> )	59.9	Xtriage
Anisotropy	0.305	Xtriage
Bulk solvent $k_{sol}$ (e/Å <sup>3</sup> ), $B_{sol}$ (Å <sup>2</sup> )	0.28 , 49.6	EDS
Estimated twinning fraction	No twinning to report.	Xtriage
L-test for twinning <sup>2</sup>	$\langle  L  \rangle = 0.48$ , $\langle L^2 \rangle = 0.31$	Xtriage
Outliers	0 of 22308 reflections	Xtriage
$F_o, F_c$ correlation	0.95	EDS
Total number of atoms	4292	wwPDB-VP
Average B, all atoms (Å <sup>2</sup> )	87.0	wwPDB-VP

Xtriage's analysis on translational NCS is as follows: *The largest off-origin peak in the Patterson function is 5.21% of the height of the origin peak. No significant pseudotranslation is detected.*

<sup>1</sup>Intensities estimated from amplitudes.

<sup>2</sup>Theoretical values of  $\langle |L| \rangle$ ,  $\langle L^2 \rangle$  for acentric reflections are 0.5, 0.375 respectively for untwinned datasets, and 0.333, 0.2 for perfectly twinned datasets.

## 5 Model quality

### 5.1 Standard geometry

Bond lengths and bond angles in the following residue types are not validated in this section: 2K0

The Z score for a bond length (or angle) is the number of standard deviations the observed value is removed from the expected value. A bond length (or angle) with  $|Z| > 5$  is considered an outlier worth inspection. RMSZ is the root-mean-square of all Z scores of the bond lengths (or angles).

Mol	Chain	Bond lengths		Bond angles	
		RMSZ	$\# Z  > 5$	RMSZ	$\# Z  > 5$
1	A	0.49	0/2171	0.67	0/2927
1	B	0.53	0/2079	0.70	0/2809
All	All	0.51	0/4250	0.68	0/5736

There are no bond length outliers.

There are no bond angle outliers.

There are no chirality outliers.

There are no planarity outliers.

### 5.2 Too-close contacts

In the following table, the Non-H and H(model) columns list the number of non-hydrogen atoms and hydrogen atoms in the chain respectively. The H(added) column lists the number of hydrogen atoms added and optimized by MolProbity. The Clashes column lists the number of clashes within the asymmetric unit, whereas Symm-Clashes lists symmetry related clashes.

Mol	Chain	Non-H	H(model)	H(added)	Clashes	Symm-Clashes
1	A	2139	0	2181	15	0
1	B	2048	0	2087	10	0
2	A	31	0	22	1	0
2	B	31	0	22	0	0
3	A	11	0	0	0	0
3	B	32	0	0	0	0
All	All	4292	0	4312	25	0

The all-atom clashscore is defined as the number of clashes found per 1000 atoms (including hydrogen atoms). The all-atom clashscore for this structure is 3.

All (25) close contacts within the same asymmetric unit are listed below, sorted by their clash

magnitude.

Atom-1	Atom-2	Interatomic distance (Å)	Clash overlap (Å)
1:A:467:GLU:HB3	1:A:471:ARG:HG3	1.59	0.82
1:A:330:TYR:HA	1:A:344:MET:HE2	1.69	0.73
1:A:342:VAL:HG12	1:A:344:MET:HE3	1.76	0.68
1:B:320:ARG:HE	1:B:330:TYR:HE1	1.44	0.65
1:A:330:TYR:HA	1:A:344:MET:CE	2.31	0.60
1:B:264:GLY:HA3	1:B:269:LYS:HE3	1.85	0.57
1:B:458:ILE:HG12	1:B:490:LEU:CD2	2.37	0.55
1:B:427:THR:HB	1:B:469:PRO:HA	1.91	0.51
1:B:274:GLU:HB2	1:B:286:THR:HG22	1.94	0.49
1:A:309:LYS:O	1:A:312:ILE:HG22	2.13	0.48
1:A:348:ALA:HB3	1:A:399:MET:HG2	1.96	0.46
1:A:274:GLU:HB2	1:A:286:THR:HG22	1.97	0.46
1:B:356:VAL:HG11	1:B:456:GLU:HG2	1.99	0.44
1:A:347:LEU:O	2:A:601:2K0:H4	2.17	0.44
1:B:328:VAL:HG21	1:B:396:LEU:HD12	2.00	0.43
1:A:453:MET:O	1:A:456:GLU:HB2	2.18	0.43
1:A:252:GLU:H	1:A:252:GLU:HG3	1.55	0.42
1:A:284:VAL:HG22	1:A:299:LYS:HD3	2.01	0.42
1:A:428:PRO:HG2	1:A:469:PRO:HB3	2.01	0.42
1:A:257:LEU:HD13	1:A:335:LEU:HD11	2.02	0.42
1:A:333:SER:HA	1:A:341:TRP:O	2.20	0.41
1:A:468:ASN:H	1:A:471:ARG:HE	1.69	0.40
1:B:424:MET:CE	1:B:473:LEU:HG	2.51	0.40
1:B:476:ILE:O	1:B:480:GLY:HA2	2.21	0.40
1:B:436:VAL:HG13	1:B:473:LEU:HD22	2.03	0.40

There are no symmetry-related clashes.

## 5.3 Torsion angles ⓘ

### 5.3.1 Protein backbone ⓘ

In the following table, the Percentiles column shows the percent Ramachandran outliers of the chain as a percentile score with respect to all X-ray entries followed by that with respect to entries of similar resolution.

The Analysed column shows the number of residues for which the backbone conformation was analysed, and the total number of residues.



Mol	Chain	Analysed	Favoured	Allowed	Outliers	Percentiles	
1	A	262/297 (88%)	255 (97%)	6 (2%)	1 (0%)	39	61
1	B	254/297 (86%)	250 (98%)	4 (2%)	0	100	100
All	All	516/594 (87%)	505 (98%)	10 (2%)	1 (0%)	52	75

All (1) Ramachandran outliers are listed below:

Mol	Chain	Res	Type
1	A	251	GLU

### 5.3.2 Protein sidechains ⓘ

In the following table, the Percentiles column shows the percent sidechain outliers of the chain as a percentile score with respect to all X-ray entries followed by that with respect to entries of similar resolution.

The Analysed column shows the number of residues for which the sidechain conformation was analysed, and the total number of residues.

Mol	Chain	Analysed	Rotameric	Outliers	Percentiles	
1	A	236/258 (92%)	224 (95%)	12 (5%)	29	52
1	B	227/258 (88%)	209 (92%)	18 (8%)	15	28
All	All	463/516 (90%)	433 (94%)	30 (6%)	21	39

All (30) residues with a non-rotameric sidechain are listed below:

Mol	Chain	Res	Type
1	A	251	GLU
1	A	252	GLU
1	A	255	GLU
1	A	257	LEU
1	A	286	THR
1	A	288	MET
1	A	340	LEU
1	A	344	MET
1	A	371	ARG
1	A	393	ASP
1	A	468	ASN
1	A	507	GLU
1	B	257	LEU
1	B	286	THR
1	B	290	VAL

*Continued on next page...*

*Continued from previous page...*

Mol	Chain	Res	Type
1	B	302	ASN
1	B	303	LEU
1	B	313	ILE
1	B	321	GLU
1	B	329	ASN
1	B	332	ASP
1	B	335	LEU
1	B	407	ASP
1	B	427	THR
1	B	467	GLU
1	B	473	LEU
1	B	484	LEU
1	B	503	ASP
1	B	507	GLU
1	B	508	LYS

Some sidechains can be flipped to improve hydrogen bonding and reduce clashes. All (2) such sidechains are listed below:

Mol	Chain	Res	Type
1	A	389	ASN
1	B	329	ASN

### 5.3.3 RNA [i](#)

There are no RNA molecules in this entry.

## 5.4 Non-standard residues in protein, DNA, RNA chains [i](#)

There are no non-standard protein/DNA/RNA residues in this entry.

### 5.5 Carbohydrates [i](#)

There are no carbohydrates in this entry.

### 5.6 Ligand geometry [i](#)

2 ligands are modelled in this entry.

In the following table, the Counts columns list the number of bonds (or angles) for which Mogul statistics could be retrieved, the number of bonds (or angles) that are observed in the model and the number of bonds (or angles) that are defined in the chemical component dictionary. The Link column lists molecule types, if any, to which the group is linked. The Z score for a bond length (or angle) is the number of standard deviations the observed value is removed from the expected value. A bond length (or angle) with  $|Z| > 2$  is considered an outlier worth inspection. RMSZ is the root-mean-square of all Z scores of the bond lengths (or angles).

Mol	Type	Chain	Res	Link	Bond lengths			Bond angles		
					Counts	RMSZ	# $ Z  > 2$	Counts	RMSZ	# $ Z  > 2$
2	2K0	A	601	-	33,35,35	1.06	2 (6%)	38,50,50	1.74	5 (13%)
2	2K0	B	601	-	33,35,35	0.91	1 (3%)	38,50,50	1.27	3 (7%)

In the following table, the Chirals column lists the number of chiral outliers, the number of chiral centers analysed, the number of these observed in the model and the number defined in the chemical component dictionary. Similar counts are reported in the Torsion and Rings columns. '-' means no outliers of that kind were identified.

Mol	Type	Chain	Res	Link	Chirals	Torsions	Rings
2	2K0	A	601	-	-	0/10/26/26	0/5/5/5
2	2K0	B	601	-	-	0/10/26/26	0/5/5/5

All (3) bond length outliers are listed below:

Mol	Chain	Res	Type	Atoms	Z	Observed(Å)	Ideal(Å)
2	A	601	2K0	C8-C7	-3.36	1.46	1.50
2	A	601	2K0	C8-C11	3.06	1.45	1.42
2	B	601	2K0	C8-C11	3.48	1.45	1.42

All (8) bond angle outliers are listed below:

Mol	Chain	Res	Type	Atoms	Z	Observed(°)	Ideal(°)
2	A	601	2K0	C20-C19-C18	-6.38	105.37	110.41
2	B	601	2K0	C21-C22-C18	-4.76	106.65	110.41
2	A	601	2K0	C21-C22-C18	-4.68	106.71	110.41
2	B	601	2K0	C16-C15-C13	2.37	130.85	127.84
2	A	601	2K0	C16-C15-C13	3.14	131.83	127.84
2	A	601	2K0	C17-N3-C18	3.25	128.86	125.52
2	A	601	2K0	C19-C18-N3	3.48	115.79	110.80
2	B	601	2K0	C17-N3-C18	3.49	129.10	125.52

There are no chirality outliers.

There are no torsion outliers.

There are no ring outliers.

1 monomer is involved in 1 short contact:

Mol	Chain	Res	Type	Clashes	Symm-Clashes
2	A	601	2K0	1	0

## 5.7 Other polymers [i](#)

There are no such residues in this entry.

## 5.8 Polymer linkage issues [i](#)

There are no chain breaks in this entry.

## 6 Fit of model and data ⓘ

### 6.1 Protein, DNA and RNA chains ⓘ

In the following table, the column labelled ‘#RSRZ> 2’ contains the number (and percentage) of RSRZ outliers, followed by percent RSRZ outliers for the chain as percentile scores relative to all X-ray entries and entries of similar resolution. The OWAB column contains the minimum, median, 95<sup>th</sup> percentile and maximum values of the occupancy-weighted average B-factor per residue. The column labelled ‘Q< 0.9’ lists the number of (and percentage) of residues with an average occupancy less than 0.9.

Mol	Chain	Analysed	<RSRZ>	#RSRZ>2	OWAB(Å <sup>2</sup> )	Q<0.9
1	A	272/297 (91%)	0.66	25 (9%) 11 12	50, 89, 148, 194	0
1	B	262/297 (88%)	0.24	7 (2%) 58 62	46, 72, 119, 162	0
All	All	534/594 (89%)	0.45	32 (5%) 25 28	46, 80, 142, 194	0

All (32) RSRZ outliers are listed below:

Mol	Chain	Res	Type	RSRZ
1	A	253	ILE	7.7
1	A	273	PHE	6.9
1	A	250	ASP	6.5
1	A	280	ALA	5.6
1	A	340	LEU	5.5
1	A	254	LEU	5.4
1	A	474	TYR	5.2
1	B	258	ARG	4.8
1	A	257	LEU	4.7
1	B	263	VAL	4.6
1	A	276	ILE	4.2
1	A	272	ARG	3.8
1	A	283	THR	3.6
1	A	261	VAL	3.6
1	A	281	SER	3.5
1	B	473	LEU	3.4
1	A	480	GLY	3.1
1	A	288	MET	2.9
1	A	251	GLU	2.8
1	B	276	ILE	2.8
1	A	335	LEU	2.7
1	B	299	LYS	2.4
1	A	300	GLN	2.4
1	A	471	ARG	2.3

*Continued on next page...*

*Continued from previous page...*

Mol	Chain	Res	Type	RSRZ
1	A	264	GLY	2.3
1	A	275	LYS	2.3
1	A	478	THR	2.3
1	B	257	LEU	2.2
1	A	259	SER	2.2
1	A	436	VAL	2.1
1	B	284	VAL	2.1
1	A	271	THR	2.0

## 6.2 Non-standard residues in protein, DNA, RNA chains [i](#)

There are no non-standard protein/DNA/RNA residues in this entry.

## 6.3 Carbohydrates [i](#)

There are no carbohydrates in this entry.

## 6.4 Ligands [i](#)

In the following table, the Atoms column lists the number of modelled atoms in the group and the number defined in the chemical component dictionary. LLDF column lists the quality of electron density of the group with respect to its neighbouring residues in protein, DNA or RNA chains. The B-factors column lists the minimum, median, 95<sup>th</sup> percentile and maximum values of B factors of atoms in the group. The column labelled 'Q< 0.9' lists the number of atoms with occupancy less than 0.9.

Mol	Type	Chain	Res	Atoms	RSCC	RSR	LLDF	B-factors(Å <sup>2</sup> )	Q<0.9
2	2K0	A	601	31/31	0.92	0.23	0.50	72,82,101,104	0
2	2K0	B	601	31/31	0.95	0.21	0.13	58,75,86,90	0

## 6.5 Other polymers [i](#)

There are no such residues in this entry.