



Full wwPDB X-ray Structure Validation Report ⓘ

Feb 1, 2016 – 11:35 AM GMT

PDB ID : 3PCO
Title : crystal structure of E. coli phenylalanine-tRNA synthetase complexed with phenylalanine and AMP
Authors : Mermershtain, I.; Finarov, I.; Klipcan, L.; Kessler, N.; Rozenberg, H.; Safro, M.G.
Deposited on : 2010-10-21
Resolution : 3.02 Å(reported)

This is a Full wwPDB X-ray Structure Validation Report for a publicly released PDB entry.
We welcome your comments at validation@mail.wwpdb.org
A user guide is available at
<http://wwpdb.org/validation/2016/XrayValidationReportHelp>
with specific help available everywhere you see the ⓘ symbol.

The following versions of software and data (see [references ⓘ](#)) were used in the production of this report:

MolProbity : 4.02b-467
Mogul : 1.7 (RC4), CSD as536be (2015)
Xtriage (Phenix) : 1.9-1692
EDS : rb-20026688
Percentile statistics : 20151230.v01 (using entries in the PDB archive December 30th 2015)
Refmac : 5.8.0135
CCP4 : 6.5.0
Ideal geometry (proteins) : Engh & Huber (2001)
Ideal geometry (DNA, RNA) : Parkinson et al. (1996)
Validation Pipeline (wwPDB-VP) : trunk26865

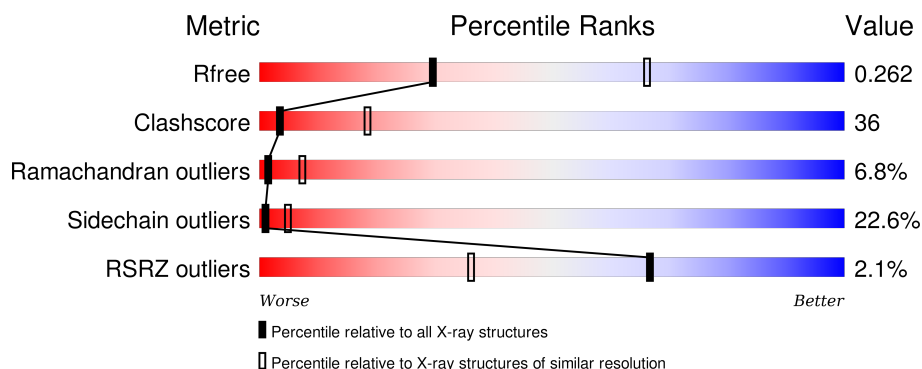
1 Overall quality at a glance ⓘ

The following experimental techniques were used to determine the structure:

X-RAY DIFFRACTION

The reported resolution of this entry is 3.02 Å.

Percentile scores (ranging between 0-100) for global validation metrics of the entry are shown in the following graphic. The table shows the number of entries on which the scores are based.



Metric	Whole archive (#Entries)	Similar resolution (#Entries, resolution range(Å))
R_{free}	91344	1773 (3.04-3.00)
Clashscore	102246	2117 (3.04-3.00)
Ramachandran outliers	100387	2050 (3.04-3.00)
Sidechain outliers	100360	2053 (3.04-3.00)
RSRZ outliers	91569	1788 (3.04-3.00)

The table below summarises the geometric issues observed across the polymeric chains and their fit to the electron density. The red, orange, yellow and green segments on the lower bar indicate the fraction of residues that contain outliers for ≥ 3 , 2, 1 and 0 types of geometric quality criteria. A grey segment represents the fraction of residues that are not modelled. The numeric value for each fraction is indicated below the corresponding segment, with a dot representing fractions $\leq 5\%$. The upper red bar (where present) indicates the fraction of residues that have poor fit to the electron density. The numeric value is given above the bar.

Mol	Chain	Length	Quality of chain
1	A	327	<div> <div>29%</div> <div>32%</div> <div>11%</div> <div>•</div> <div>26%</div> </div>
1	C	327	<div> <div>9%</div> <div>43%</div> <div>40%</div> <div>13%</div> <div>• •</div> </div>
2	B	795	<div> <div>45%</div> <div>40%</div> <div>13%</div> <div>•</div> </div>
2	D	795	<div> <div>46%</div> <div>38%</div> <div>14%</div> <div>•</div> </div>

The following table lists non-polymeric compounds, carbohydrate monomers and non-standard residues in protein, DNA, RNA chains that are outliers for geometric or electron-density-fit crite-

ria:

Mol	Type	Chain	Res	Chirality	Geometry	Clashes	Electron density
3	PHE	A	980	-	-	-	X
4	AMP	A	992	-	-	X	X
4	AMP	C	999	-	-	X	-

2 Entry composition [i](#)

There are 4 unique types of molecules in this entry. The entry contains 16724 atoms, of which 0 are hydrogens and 0 are deuteriums.

In the tables below, the ZeroOcc column contains the number of atoms modelled with zero occupancy, the AltConf column contains the number of residues with at least one atom in alternate conformation and the Trace column contains the number of residues modelled with at most 2 atoms.

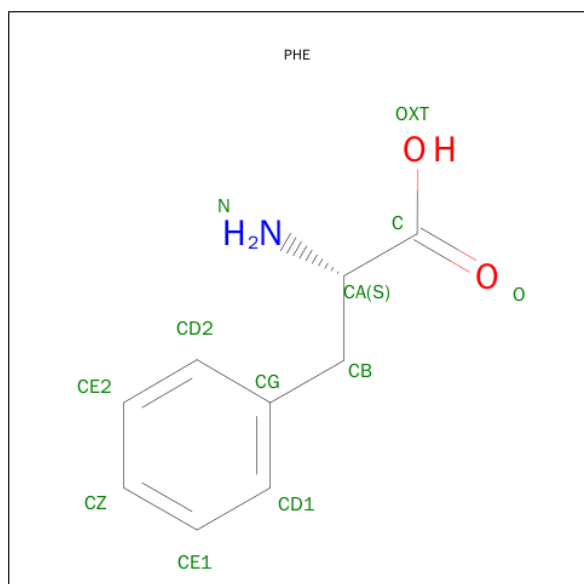
- Molecule 1 is a protein called Phenylalanyl-tRNA synthetase, alpha subunit.

Mol	Chain	Residues	Atoms					ZeroOcc	AltConf	Trace
1	A	242	Total	C	N	O	S	0	0	0
			1964	1250	347	358	9			
1	C	323	Total	C	N	O	S	0	0	0
			2462	1552	445	456	9			

- Molecule 2 is a protein called Phenylalanyl-tRNA synthetase, beta chain.

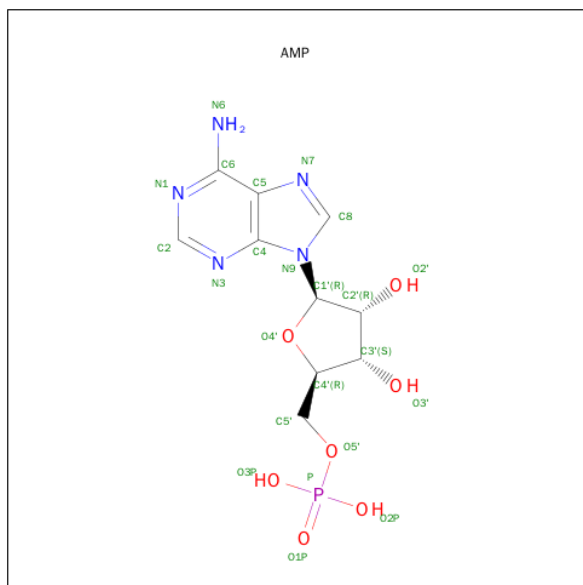
Mol	Chain	Residues	Atoms					ZeroOcc	AltConf	Trace
2	B	795	Total	C	N	O	S	0	0	0
			6111	3845	1081	1158	27			
2	D	795	Total	C	N	O	S	0	0	0
			6117	3848	1081	1161	27			

- Molecule 3 is PHENYLALANINE (three-letter code: PHE) (formula: C₉H₁₁NO₂).



Mol	Chain	Residues	Atoms				ZeroOcc	AltConf
3	A	1	Total	C	N	O	0	0
			12	9	1	2		
3	C	1	Total	C	N	O	0	0
			12	9	1	2		

- Molecule 4 is ADENOSINE MONOPHOSPHATE (three-letter code: AMP) (formula: $C_{10}H_{14}N_5O_7P$).

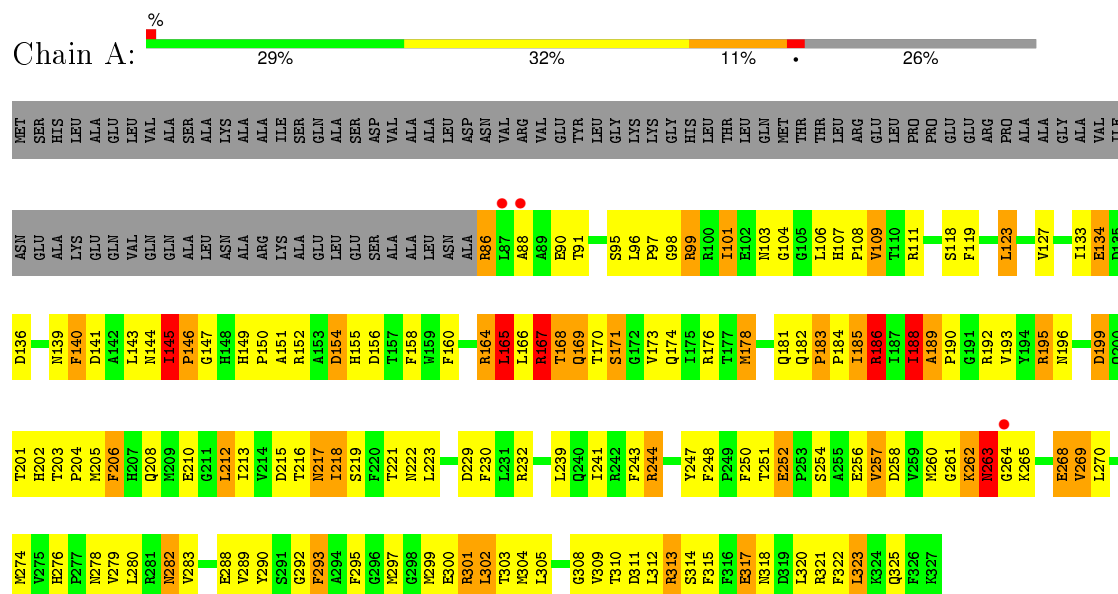


Mol	Chain	Residues	Atoms					ZeroOcc	AltConf
4	A	1	Total	C	N	O	P	0	0
			23	10	5	7	1		
4	C	1	Total	C	N	O	P	0	0
			23	10	5	7	1		

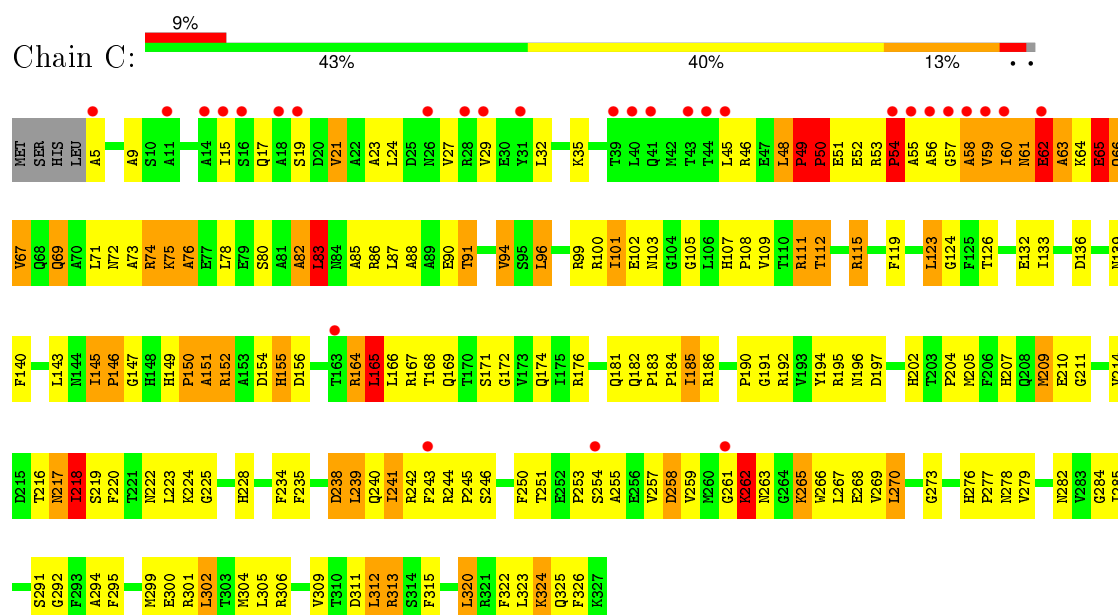
3 Residue-property plots

These plots are drawn for all protein, RNA and DNA chains in the entry. The first graphic for a chain summarises the proportions of errors displayed in the second graphic. The second graphic shows the sequence view annotated by issues in geometry and electron density. Residues are color-coded according to the number of geometric quality criteria for which they contain at least one outlier: green = 0, yellow = 1, orange = 2 and red = 3 or more. A red dot above a residue indicates a poor fit to the electron density ($RSRZ > 2$). Stretches of 2 or more consecutive residues without any outlier are shown as a green connector. Residues present in the sample, but not in the model, are shown in grey.

- Molecule 1: Phenylalanyl-tRNA synthetase, alpha subunit

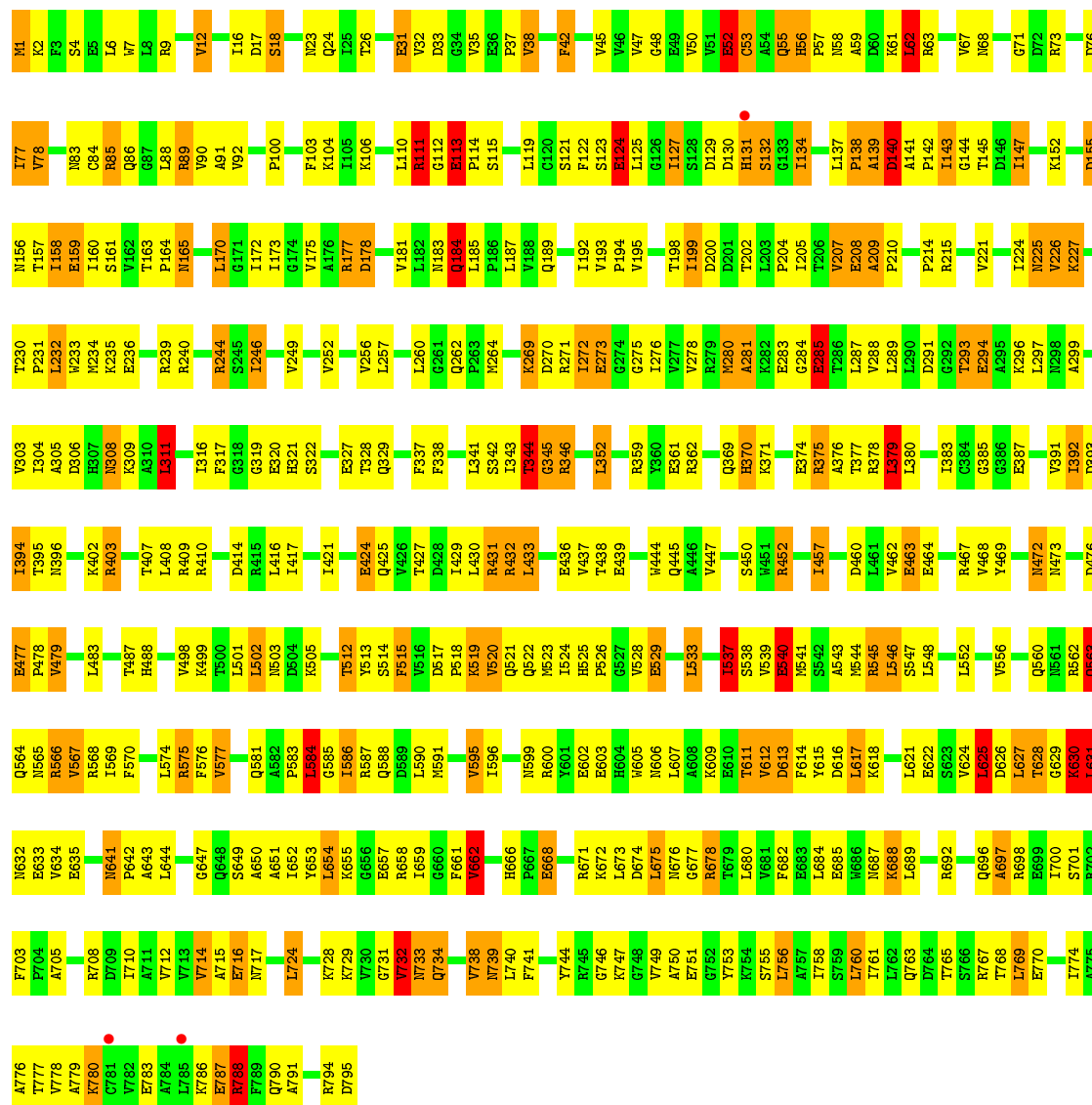


- Molecule 1: Phenylalanyl-tRNA synthetase, alpha subunit



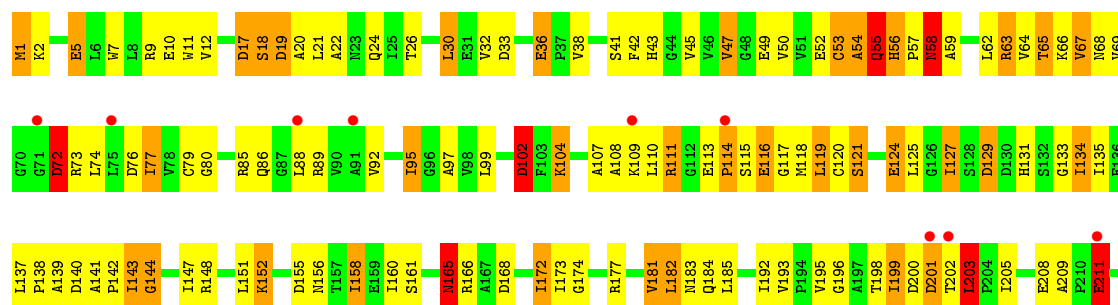
- Molecule 2: Phenylalanyl-tRNA synthetase, beta chain

Chain B: 45% 40% 13% 2%



- Molecule 2: Phenylalanyl-tRNA synthetase, beta chain

Chain D:  46% 38% 14%



E770	E771	I774	V778	A779	K780	A784	L785	K786	E787	Q790	A791	S792	L793	K794	I795	L689	A690	D691	R692	R698	E699	I700	S701	R702	F703	F704	A705	R708	D709	I710	A711	V712	V713	V714	A715	E716	N717	A721	D722	I723	L724	K729	V730	G731	N732	N733	Q734	V735	N739	L740	F741	R745	Q746	K747	K754	I758	S759	L760	L761	L762	Q763	D764	T765	S766	R767	T768	L769	S623	V624	L625	D626	L627	T628	Q629	K630	L631	E632	E633	V634	E635	E639	A640	N641	P642	A643	L644	H645	S649	Y653	L654	K655	P656	E657	R658	I659	G660	F661	V662	G663	V664	V665	H666	P667	E668	L669	E670	R671	K672	L673	D674	L675	H676	G677	R678	T679	L680	V681	F682	E683	L684	E685	H686	N687	K688	L621	E622	V479	Q480	L483	I484	M485	Q486	T487	E490	L493	V498	K499	D504	K505	G506	F507	Q508	E509	V510	I511	T512	F513	S514	F515	V516	D517	P518	K519	V520	Q521	Q522	N523	I524	V528	L531	L532	L533	P534	S535	P536	I537	S538	S542	A543	N544	R545	L546	S547	L548	W549	G551	I392	D393	I394	T395	N396	L400	P401	R402	K403	L408	S411	K412	L416	D423	V426	Q427	T427	D428	I429	L430	R431	R432	V437	T438	E439	G440	R441	D442	E443	N444	Q445	P449	S450	N451	R452	N455	E458	E459	D460	L461	V462	E463	G470	Y471	L472	N473	I474	P475	D476	I302	D303	I304	T305	N306	L307	R308	I311	A312	I316	F317	G318	G319	E320	R321	S322	D326	E327	T328	Q329	N330	C335	A336	F337	F338	L341	S342	Q345	R346	A347	R348	S357	R358	R359	Y360	E361	R362	Q369	R370	E374	R375	T377	R378	L379	L380	I381	A388	R215	T216	L217	K222	G223	T224	K227	A228	P229	T230	T234	L238	R239	R240	C241	G242	I243	S245	I246	D247	L248	T253	N254	V255	V256	L257	L258	E259	Q262	P263	N264	R269	D270	R271	I272	E273	I276	V277	V278	R279	N280	L281	K282	V288	L289	L290	D291	E294
------	------	------	------	------	------	------	------	------	------	------	------	------	------	------	------	------	------	------	------	------	------	------	------	------	------	------	------	------	------	------	------	------	------	------	------	------	------	------	------	------	------	------	------	------	------	------	------	------	------	------	------	------	------	------	------	------	------	------	------	------	------	------	------	------	------	------	------	------	------	------	------	------	------	------	------	------	------	------	------	------	------	------	------	------	------	------	------	------	------	------	------	------	------	------	------	------	------	------	------	------	------	------	------	------	------	------	------	------	------	------	------	------	------	------	------	------	------	------	------	------	------	------	------	------	------	------	------	------	------	------	------	------	------	------	------	------	------	------	------	------	------	------	------	------	------	------	------	------	------	------	------	------	------	------	------	------	------	------	------	------	------	------	------	------	------	------	------	------	------	------	------	------	------	------	------	------	------	------	------	------	------	------	------	------	------	------	------	------	------	------	------	------	------	------	------	------	------	------	------	------	------	------	------	------	------	------	------	------	------	------	------	------	------	------	------	------	------	------	------	------	------	------	------	------	------	------	------	------	------	------	------	------	------	------	------	------	------	------	------	------	------	------	------	------	------	------	------	------	------	------	------	------	------	------	------	------	------	------	------	------	------	------	------	------	------	------	------	------	------	------	------	------	------	------	------	------	------	------	------	------	------	------	------	------	------	------	------	------	------	------	------	------	------	------	------	------	------	------	------	------	------	------	------	------	------	------	------	------	------	------	------	------	------	------	------	------	------	------	------	------

4 Data and refinement statistics

Property	Value	Source
Space group	P 21 21 21	Depositor
Cell constants a, b, c, α , β , γ	65.55Å 178.94Å 254.42Å 90.00° 90.00° 90.00°	Depositor
Resolution (Å)	38.71 – 3.02 38.71 – 3.02	Depositor EDS
% Data completeness (in resolution range)	98.4 (38.71-3.02) 98.4 (38.71-3.02)	Depositor EDS
R_{merge}	0.11	Depositor
R_{sym}	(Not available)	Depositor
$\langle I/\sigma(I) \rangle$ ¹	1.67 (at 3.01Å)	Xtriage
Refinement program	REFMAC 5.5.0102	Depositor
R, R_{free}	0.232 , 0.300 0.265 , 0.262	Depositor DCC
R_{free} test set	2979 reflections (5.06%)	DCC
Wilson B-factor (Å ²)	75.4	Xtriage
Anisotropy	0.080	Xtriage
Bulk solvent k_{sol} (e/Å ³), B_{sol} (Å ²)	0.27 , 58.8	EDS
Estimated twinning fraction	No twinning to report.	Xtriage
L-test for twinning ²	$\langle L \rangle = 0.48$, $\langle L^2 \rangle = 0.31$	Xtriage
Outliers	0 of 58878 reflections	Xtriage
F_o, F_c correlation	0.90	EDS
Total number of atoms	16724	wwPDB-VP
Average B, all atoms (Å ²)	91.0	wwPDB-VP

Xtriage's analysis on translational NCS is as follows: *The largest off-origin peak in the Patterson function is 6.55% of the height of the origin peak. No significant pseudotranslation is detected.*

¹Intensities estimated from amplitudes.

²Theoretical values of $\langle |L| \rangle$, $\langle L^2 \rangle$ for acentric reflections are 0.5, 0.375 respectively for untwinned datasets, and 0.333, 0.2 for perfectly twinned datasets.

5 Model quality [i](#)

5.1 Standard geometry [i](#)

Bond lengths and bond angles in the following residue types are not validated in this section: AMP

The Z score for a bond length (or angle) is the number of standard deviations the observed value is removed from the expected value. A bond length (or angle) with $|Z| > 5$ is considered an outlier worth inspection. RMSZ is the root-mean-square of all Z scores of the bond lengths (or angles).

Mol	Chain	Bond lengths		Bond angles	
		RMSZ	# $ Z > 5$	RMSZ	# $ Z > 5$
1	A	0.76	0/2016	0.98	5/2730 (0.2%)
1	C	0.65	0/2516	0.88	8/3412 (0.2%)
2	B	0.69	2/6212 (0.0%)	0.90	10/8432 (0.1%)
2	D	0.63	0/6218	0.84	4/8440 (0.0%)
All	All	0.67	2/16962 (0.0%)	0.89	27/23014 (0.1%)

Chiral center outliers are detected by calculating the chiral volume of a chiral center and verifying if the center is modelled as a planar moiety or with the opposite hand. A planarity outlier is detected by checking planarity of atoms in a peptide group, atoms in a mainchain group or atoms of a sidechain that are expected to be planar.

Mol	Chain	#Chirality outliers	#Planarity outliers
1	A	0	1
1	C	0	3
2	B	0	9
2	D	0	6
All	All	0	19

All (2) bond length outliers are listed below:

Mol	Chain	Res	Type	Atoms	Z	Observed(Å)	Ideal(Å)
2	B	463	GLU	CB-CG	5.87	1.63	1.52
2	B	540	GLU	CG-CD	5.10	1.59	1.51

All (27) bond angle outliers are listed below:

Mol	Chain	Res	Type	Atoms	Z	Observed(°)	Ideal(°)
2	B	563	GLN	N-CA-C	-5.99	94.82	111.00
1	C	54	PRO	N-CA-CB	5.99	110.48	103.30
1	C	49	PRO	N-CA-CB	5.96	110.46	103.30

Continued on next page...

Continued from previous page...

Mol	Chain	Res	Type	Atoms	Z	Observed(°)	Ideal(°)
1	C	270	LEU	CA-CB-CG	5.90	128.87	115.30
1	C	50	PRO	N-CA-CB	5.82	110.29	103.30
1	A	140	PHE	CB-CA-C	-5.75	98.89	110.40
1	A	215	ASP	CB-CA-C	-5.62	99.16	110.40
2	B	533	LEU	CA-CB-CG	5.61	128.20	115.30
1	C	165	LEU	CA-CB-CG	5.60	128.17	115.30
2	B	595	VAL	CB-CA-C	-5.43	101.08	111.40
2	B	311	LEU	CA-CB-CG	5.39	127.71	115.30
2	B	379	LEU	CA-CB-CG	5.34	127.59	115.30
1	A	165	LEU	CA-CB-CG	5.32	127.54	115.30
1	C	96	LEU	CA-CB-CG	5.31	127.52	115.30
2	B	627	LEU	CA-CB-CG	-5.29	103.13	115.30
2	B	662	VAL	CB-CA-C	-5.28	101.36	111.40
2	D	724	LEU	CA-CB-CG	5.24	127.36	115.30
2	D	740	LEU	CA-CB-CG	5.24	127.36	115.30
2	D	119	LEU	CA-CB-CG	5.21	127.28	115.30
1	C	312	LEU	CA-CB-CG	5.20	127.25	115.30
2	B	654	LEU	CA-CB-CG	5.19	127.23	115.30
1	C	302	LEU	N-CA-CB	5.17	120.74	110.40
1	A	301	ARG	NE-CZ-NH2	-5.12	117.74	120.30
1	A	167	ARG	NE-CZ-NH1	-5.07	117.76	120.30
2	B	625	LEU	CA-CB-CG	-5.04	103.71	115.30
2	B	537	ILE	CB-CA-C	-5.01	101.59	111.60
2	D	641	ASN	C-N-CD	-5.00	109.60	120.60

There are no chirality outliers.

All (19) planarity outliers are listed below:

Mol	Chain	Res	Type	Group
1	A	183	PRO	Peptide
2	B	113	GLU	Peptide
2	B	42	PHE	Peptide
2	B	472	ASN	Peptide
2	B	529	GLU	Peptide
2	B	55	GLN	Peptide
2	B	61	LYS	Peptide
2	B	62	LEU	Peptide
2	B	625	LEU	Peptide
2	B	631	LEU	Peptide
1	C	182	GLN	Peptide
1	C	183	PRO	Peptide
1	C	262	LYS	Peptide

Continued on next page...

Continued from previous page...

Mol	Chain	Res	Type	Group
2	D	246	ILE	Peptide
2	D	345	GLY	Peptide
2	D	55	GLN	Peptide
2	D	58	ASN	Peptide
2	D	672	LYS	Peptide
2	D	72	ASP	Peptide

5.2 Too-close contacts [i](#)

In the following table, the Non-H and H(model) columns list the number of non-hydrogen atoms and hydrogen atoms in the chain respectively. The H(added) column lists the number of hydrogen atoms added and optimized by MolProbity. The Clashes column lists the number of clashes within the asymmetric unit, whereas Symm-Clashes lists symmetry related clashes.

Mol	Chain	Non-H	H(model)	H(added)	Clashes	Symm-Clashes
1	A	1964	0	1900	213	0
1	C	2462	0	2307	217	0
2	B	6111	0	6166	419	0
2	D	6117	0	6169	430	0
3	A	12	0	8	2	0
3	C	12	0	8	1	0
4	A	23	0	12	9	0
4	C	23	0	12	9	0
All	All	16724	0	16582	1211	0

The all-atom clashscore is defined as the number of clashes found per 1000 atoms (including hydrogen atoms). The all-atom clashscore for this structure is 36.

All (1211) close contacts within the same asymmetric unit are listed below, sorted by their clash magnitude.

Atom-1	Atom-2	Interatomic distance (Å)	Clash overlap (Å)
2:D:55:GLN:HB2	2:D:56:HIS:CA	1.37	1.46
1:C:58:ALA:C	1:C:60:ILE:HB	1.48	1.34
1:C:58:ALA:HB1	1:C:60:ILE:CG2	1.58	1.33
2:D:631:LEU:HD12	2:D:632:ASN:N	1.47	1.27
2:D:55:GLN:HB2	2:D:56:HIS:C	1.56	1.24
1:A:155:HIS:CD2	1:A:168:THR:HG21	1.76	1.19
1:A:185:ILE:CD1	1:A:212:LEU:HD13	1.72	1.19
1:C:58:ALA:O	1:C:59:VAL:HG12	1.43	1.18
1:C:239:LEU:HB3	1:C:240:GLN:HA	1.24	1.17

Continued on next page...

Continued from previous page...

Atom-1	Atom-2	Interatomic distance (Å)	Clash overlap (Å)
1:A:158:PHE:CE2	1:A:195:ARG:O	1.97	1.17
2:D:56:HIS:HB3	2:D:57:PRO:HA	1.17	1.16
1:A:170:THR:O	1:A:210:GLU:HG3	1.42	1.16
1:C:62:GLU:HG3	1:C:63:ALA:H	1.05	1.15
2:D:56:HIS:CE1	2:D:58:ASN:HB3	1.82	1.14
1:A:140:PHE:O	1:A:145:ILE:HG12	1.47	1.14
2:D:115:SER:O	2:D:116:GLU:O	1.65	1.13
1:C:60:ILE:HG22	1:C:61:ASN:H	0.97	1.13
2:D:375:ARG:HG3	2:D:375:ARG:HH11	1.02	1.12
2:D:631:LEU:CD1	2:D:632:ASN:H	1.62	1.12
1:A:104:GLY:O	2:B:503:ASN:CG	1.88	1.12
2:B:522:GLN:NE2	2:B:529:GLU:HG3	1.65	1.12
2:B:537:ILE:HD12	2:B:537:ILE:H	0.98	1.12
1:A:145:ILE:HB	1:A:146:PRO:HA	1.31	1.11
1:C:59:VAL:N	1:C:60:ILE:HB	1.63	1.11
1:A:185:ILE:HD11	1:A:212:LEU:HD13	1.26	1.09
1:A:88:ALA:O	1:A:91:THR:HG23	1.49	1.09
2:D:55:GLN:HB2	2:D:56:HIS:HA	1.20	1.09
1:C:58:ALA:CB	1:C:60:ILE:CG2	2.30	1.09
2:D:55:GLN:CB	2:D:56:HIS:CA	2.30	1.08
1:C:60:ILE:CG2	1:C:61:ASN:H	1.66	1.07
2:B:452:ARG:HG2	2:B:452:ARG:HH11	1.00	1.07
1:C:62:GLU:HG3	1:C:63:ALA:N	1.62	1.07
1:A:166:LEU:O	1:A:167:ARG:O	1.70	1.07
1:C:60:ILE:HG22	1:C:61:ASN:N	1.64	1.06
1:A:166:LEU:HD11	2:B:544:MET:CE	1.83	1.05
2:B:522:GLN:HE22	2:B:529:GLU:CG	1.67	1.05
2:D:452:ARG:HH11	2:D:452:ARG:HG2	1.18	1.04
2:D:55:GLN:CB	2:D:56:HIS:O	2.06	1.04
2:B:631:LEU:HG	2:B:632:ASN:H	1.17	1.04
1:C:59:VAL:HA	1:C:60:ILE:O	1.59	1.03
2:D:56:HIS:CB	2:D:57:PRO:HA	1.88	1.03
2:B:787:GLU:O	2:B:788:ARG:HD2	1.58	1.03
2:D:449:PRO:HD2	2:D:455:MET:HE1	1.40	1.02
1:C:58:ALA:CA	1:C:60:ILE:HB	1.90	1.01
2:B:522:GLN:HE22	2:B:529:GLU:HG3	0.88	1.01
2:B:537:ILE:CD1	2:B:537:ILE:H	1.73	1.00
1:A:136:ASP:OD1	1:A:152:ARG:NH2	1.95	1.00
2:B:600:ARG:NH1	2:B:616:ASP:OD2	1.94	1.00
1:A:164:ARG:NH1	2:B:585:GLY:H	1.58	0.99
1:C:58:ALA:HB1	1:C:60:ILE:HG22	0.98	0.98

Continued on next page...

Continued from previous page...

Atom-1	Atom-2	Interatomic distance (Å)	Clash overlap (Å)
1:A:279:VAL:HA	1:A:282:ASN:HD21	1.26	0.98
1:A:164:ARG:HH12	2:B:585:GLY:H	1.05	0.98
2:D:625:LEU:O	2:D:626:ASP:CB	2.12	0.97
2:D:55:GLN:CB	2:D:56:HIS:C	2.31	0.97
1:A:139:ASN:HD21	1:A:168:THR:HB	1.27	0.97
2:D:732:VAL:HG13	2:D:733:ASN:H	1.26	0.97
2:D:269:LYS:O	2:D:272:ILE:HD12	1.65	0.97
1:A:140:PHE:C	1:A:145:ILE:HG12	1.84	0.96
2:D:375:ARG:CG	2:D:375:ARG:HH11	1.78	0.96
1:A:166:LEU:HD11	2:B:544:MET:HE3	1.48	0.96
2:B:244:ARG:HE	2:B:244:ARG:H	1.10	0.96
1:C:58:ALA:CB	1:C:60:ILE:HG22	1.92	0.95
1:A:222:ASN:HB3	2:B:479:VAL:HG12	1.47	0.95
2:B:630:LYS:HB3	2:B:631:LEU:O	1.66	0.95
2:D:631:LEU:HD12	2:D:632:ASN:H	0.79	0.94
2:D:716:GLU:OE1	2:D:745:ARG:NH1	2.00	0.94
1:A:188:ILE:O	1:A:189:ALA:HB2	1.65	0.94
1:A:168:THR:HG22	1:A:169:GLN:HG3	1.47	0.94
2:B:644:LEU:HD13	2:B:649:SER:HB2	1.50	0.94
2:D:253:THR:HG22	2:D:264:MET:HB2	1.48	0.94
1:C:59:VAL:N	1:C:60:ILE:CB	2.30	0.93
2:B:631:LEU:CG	2:B:632:ASN:H	1.81	0.93
2:B:600:ARG:NH1	2:B:616:ASP:OD1	2.02	0.93
1:C:276:HIS:HD2	1:C:278:ASN:HB2	1.33	0.93
2:D:26:THR:HG22	2:D:32:VAL:H	1.34	0.93
1:C:202:HIS:CE1	1:C:301:ARG:HH22	1.85	0.93
2:B:452:ARG:HG2	2:B:452:ARG:NH1	1.76	0.92
2:D:632:ASN:OD1	2:D:633:GLU:HG2	1.68	0.92
1:C:75:LYS:O	1:C:75:LYS:HG3	1.67	0.92
2:D:55:GLN:CB	2:D:56:HIS:HA	1.98	0.91
2:D:499:LYS:HD3	2:D:570:PHE:HE1	1.33	0.91
2:B:537:ILE:HD12	2:B:537:ILE:N	1.84	0.91
2:D:577:VAL:HG13	2:D:587:ARG:HB3	1.52	0.91
2:D:626:ASP:O	2:D:628:THR:N	2.05	0.90
2:D:53:CYS:SG	2:D:53:CYS:O	2.30	0.90
2:B:586:ILE:H	2:B:586:ILE:HD12	1.35	0.90
2:B:78:VAL:HG12	2:B:115:SER:HB3	1.52	0.90
1:A:203:THR:H	4:A:992:AMP:HN61	1.20	0.89
2:D:786:LYS:HD2	2:D:791:ALA:HB3	1.53	0.89
2:B:596:ILE:HD12	2:B:612:VAL:HG21	1.53	0.88
1:A:145:ILE:CB	1:A:146:PRO:HA	2.02	0.88

Continued on next page...

Continued from previous page...

Atom-1	Atom-2	Interatomic distance (Å)	Clash overlap (Å)
1:A:155:HIS:HD2	1:A:168:THR:HG21	1.29	0.88
2:B:600:ARG:NH1	2:B:616:ASP:CG	2.27	0.88
2:B:111:ARG:N	2:B:112:GLY:HA2	1.89	0.88
2:B:668:GLU:OE1	2:B:668:GLU:N	2.06	0.88
2:D:517:ASP:HB3	2:D:520:VAL:HB	1.55	0.87
2:B:344:THR:HA	2:B:361:GLU:OE1	1.75	0.87
2:B:625:LEU:O	2:B:627:LEU:N	2.08	0.87
2:B:205:ILE:HG22	2:B:276:ILE:HB	1.54	0.87
2:D:375:ARG:NH1	2:D:375:ARG:HG3	1.84	0.87
2:D:634:VAL:HG22	2:D:654:LEU:HB2	1.55	0.87
1:A:166:LEU:O	1:A:167:ARG:C	2.12	0.86
1:C:54:PRO:N	1:C:55:ALA:HA	1.89	0.86
1:A:104:GLY:O	2:B:503:ASN:CB	2.23	0.86
1:C:58:ALA:CB	1:C:60:ILE:HG21	2.04	0.85
2:B:710:ILE:HD13	2:B:712:VAL:HG23	1.55	0.85
1:C:195:ARG:O	1:C:204:PRO:HA	1.77	0.85
1:A:95:SER:HB2	2:D:721:ALA:HB2	1.59	0.85
1:A:145:ILE:HB	1:A:146:PRO:CA	2.06	0.84
2:B:165:ASN:H	2:B:165:ASN:HD22	1.24	0.84
2:D:701:SER:HA	2:D:702:ARG:HH21	1.42	0.84
2:D:177:ARG:O	2:D:181:VAL:HG12	1.77	0.84
2:D:700:ILE:O	2:D:701:SER:HB3	1.77	0.84
1:C:107:HIS:HE1	1:C:109:VAL:HG13	1.43	0.84
2:D:113:GLU:HB3	2:D:114:PRO:HD2	1.58	0.83
1:A:140:PHE:CA	1:A:145:ILE:HG12	2.07	0.83
1:C:202:HIS:CE1	1:C:301:ARG:NH2	2.45	0.83
2:D:627:LEU:HD11	2:D:631:LEU:HD23	1.61	0.83
1:C:62:GLU:CG	1:C:63:ALA:N	2.42	0.83
2:D:205:ILE:HG22	2:D:276:ILE:HB	1.60	0.82
1:C:59:VAL:N	1:C:60:ILE:C	2.33	0.82
2:D:626:ASP:C	2:D:628:THR:H	1.80	0.82
1:A:300:GLU:HB3	1:A:312:LEU:CD1	2.10	0.82
1:C:224:LYS:HE2	2:D:474:ILE:O	1.78	0.82
2:B:343:ILE:O	2:B:346:ARG:HG2	1.80	0.81
2:D:85:ARG:HB3	2:D:88:LEU:HD13	1.62	0.81
2:B:432:ARG:HG2	2:B:432:ARG:HH11	1.44	0.81
2:D:515:PHE:HD1	2:D:544:MET:HE1	1.46	0.81
1:A:166:LEU:HD11	2:B:544:MET:HE1	1.60	0.81
1:C:59:VAL:H	1:C:60:ILE:C	1.84	0.81
1:A:140:PHE:O	1:A:145:ILE:CG1	2.27	0.81
1:C:59:VAL:O	1:C:59:VAL:HG13	1.80	0.81

Continued on next page...

Continued from previous page...

Atom-1	Atom-2	Interatomic distance (Å)	Clash overlap (Å)
2:B:181:VAL:HG22	2:B:432:ARG:HG3	1.63	0.80
2:B:631:LEU:HG	2:B:632:ASN:N	1.96	0.80
2:D:45:VAL:HB	2:D:147:ILE:HD11	1.62	0.80
2:D:55:GLN:HB3	2:D:56:HIS:O	1.80	0.80
1:C:59:VAL:HG23	1:C:62:GLU:HG2	1.61	0.80
2:B:429:ILE:HG23	2:B:468:VAL:HG21	1.63	0.80
1:C:59:VAL:CA	1:C:60:ILE:C	2.50	0.80
2:D:510:VAL:O	2:D:571:GLU:HG3	1.80	0.80
2:D:626:ASP:C	2:D:628:THR:N	2.32	0.80
2:D:644:LEU:HD13	2:D:649:SER:HB2	1.64	0.79
2:B:651:ALA:HB1	2:B:658:ARG:HD3	1.64	0.79
1:A:185:ILE:HD12	1:A:212:LEU:HD13	1.64	0.79
2:D:790:GLN:HE21	2:D:791:ALA:H	1.29	0.79
2:D:56:HIS:HB3	2:D:57:PRO:CA	2.07	0.79
1:C:58:ALA:CA	1:C:60:ILE:CB	2.61	0.79
2:B:244:ARG:HE	2:B:244:ARG:N	1.79	0.79
2:D:733:ASN:HA	2:D:734:GLN:HB2	1.63	0.79
2:D:357:SER:O	2:D:361:GLU:HG2	1.82	0.79
1:C:59:VAL:CA	1:C:60:ILE:O	2.31	0.78
2:B:285:GLU:HB2	2:B:297:LEU:HB2	1.65	0.78
2:D:56:HIS:CE1	2:D:58:ASN:CB	2.64	0.78
1:A:203:THR:H	4:A:992:AMP:N6	1.81	0.78
1:A:149:HIS:CG	1:A:150:PRO:HD2	2.18	0.78
1:A:300:GLU:HB3	1:A:312:LEU:HD13	1.66	0.78
2:D:85:ARG:HB3	2:D:88:LEU:CD1	2.13	0.78
1:A:155:HIS:CD2	1:A:168:THR:CG2	2.63	0.77
2:B:85:ARG:NH2	2:B:88:LEU:HD11	1.99	0.77
1:C:107:HIS:CE1	1:C:109:VAL:HG13	2.20	0.77
2:D:209:ALA:HB1	2:D:211:GLU:OE2	1.84	0.77
2:B:198:THR:O	2:B:199:ILE:HG23	1.84	0.77
1:A:147:GLY:HA2	1:A:152:ARG:NE	2.00	0.77
1:A:270:LEU:HB3	1:A:297:MET:HB3	1.66	0.77
1:A:139:ASN:O	1:A:143:LEU:HD12	1.84	0.77
2:D:32:VAL:HB	2:D:158:ILE:HD11	1.66	0.77
2:B:560:GLN:HE22	2:B:675:LEU:HA	1.49	0.77
2:B:56:HIS:HB3	2:B:63:ARG:H	1.51	0.76
2:D:641:ASN:O	2:D:643:ALA:N	2.18	0.76
2:B:272:ILE:HG12	2:B:273:GLU:N	2.00	0.76
1:A:164:ARG:HH12	2:B:585:GLY:N	1.83	0.76
2:B:272:ILE:HG12	2:B:273:GLU:H	1.51	0.76
2:B:9:ARG:HA	2:B:12:VAL:O	1.86	0.76

Continued on next page...

Continued from previous page...

Atom-1	Atom-2	Interatomic distance (Å)	Clash overlap (Å)
2:D:319:GLY:O	2:D:321:HIS:N	2.18	0.76
1:C:239:LEU:HB3	1:C:240:GLN:CA	2.13	0.75
2:B:600:ARG:HH11	2:B:616:ASP:CG	1.89	0.75
1:A:188:ILE:O	1:A:189:ALA:CB	2.33	0.75
2:D:618:LYS:O	2:D:622:GLU:HB2	1.86	0.75
1:C:58:ALA:O	1:C:59:VAL:CG1	2.30	0.74
1:C:59:VAL:N	1:C:60:ILE:CA	2.49	0.74
2:B:38:VAL:HG21	2:B:240:ARG:HD3	1.69	0.74
1:A:276:HIS:HD2	1:A:278:ASN:H	1.35	0.74
2:D:784:ALA:O	2:D:787:GLU:HB3	1.87	0.74
1:A:304:MET:HG2	1:A:309:VAL:O	1.88	0.74
2:B:202:THR:HG21	2:B:392:ILE:HD11	1.69	0.74
2:D:473:ASN:ND2	2:D:473:ASN:H	1.86	0.74
1:C:62:GLU:O	1:C:64:LYS:N	2.21	0.74
2:B:425:GLN:O	2:B:429:ILE:HG12	1.88	0.74
2:D:499:LYS:HD3	2:D:570:PHE:CE1	2.20	0.74
2:B:393:ASP:OD2	2:B:395:THR:HG23	1.87	0.74
1:A:145:ILE:CB	1:A:146:PRO:CA	2.61	0.73
2:B:710:ILE:CD1	2:B:712:VAL:HG23	2.17	0.73
2:D:624:VAL:HG12	2:D:625:LEU:N	2.02	0.73
3:A:980:PHE:N	4:A:992:AMP:HO3'	1.86	0.73
2:B:341:LEU:HD12	2:B:341:LEU:H	1.53	0.73
1:C:276:HIS:CD2	1:C:278:ASN:HB2	2.22	0.73
1:A:263:ASN:HB3	1:A:264:GLY:CA	2.18	0.73
2:D:168:ASP:O	2:D:174:GLY:HA3	1.88	0.73
2:B:515:PHE:HD1	2:B:544:MET:HE1	1.54	0.73
2:B:631:LEU:CG	2:B:632:ASN:N	2.51	0.73
1:C:146:PRO:O	1:C:152:ARG:NE	2.21	0.73
1:A:136:ASP:CG	1:A:152:ARG:HH22	1.91	0.72
1:C:239:LEU:CB	1:C:240:GLN:HA	2.12	0.72
1:A:216:THR:O	1:A:217:ASN:HB2	1.88	0.72
1:A:95:SER:HB2	2:D:721:ALA:CB	2.18	0.72
1:C:87:LEU:O	1:C:91:THR:HG22	1.89	0.72
2:D:631:LEU:CD1	2:D:632:ASN:N	2.35	0.72
1:A:104:GLY:O	2:B:503:ASN:HB3	1.89	0.72
2:D:273:GLU:HG3	2:D:306:ASP:OD1	1.90	0.72
2:D:626:ASP:CB	2:D:631:LEU:HD22	2.19	0.72
2:D:702:ARG:NE	2:D:702:ARG:H	1.88	0.72
2:D:127:ILE:HD13	2:D:127:ILE:C	2.10	0.72
2:B:47:VAL:HG21	2:B:141:ALA:HB1	1.70	0.71
2:B:432:ARG:CG	2:B:432:ARG:HH11	2.01	0.71

Continued on next page...

Continued from previous page...

Atom-1	Atom-2	Interatomic distance (Å)	Clash overlap (Å)
2:D:596:ILE:HG13	2:D:680:LEU:HB2	1.72	0.71
1:C:69:GLN:HA	1:C:69:GLN:HE21	1.55	0.71
2:D:57:PRO:HB3	2:D:59:ALA:O	1.90	0.71
2:B:111:ARG:H	2:B:112:GLY:HA2	1.56	0.71
1:A:218:ILE:HD13	1:A:293:PHE:CD1	2.26	0.71
2:D:699:GLU:HA	2:D:699:GLU:OE1	1.90	0.71
2:D:338:PHE:HD2	2:D:360:TYR:CE1	2.09	0.70
1:C:299:MET:HA	1:C:299:MET:HE2	1.73	0.70
2:D:47:VAL:HG23	2:D:142:PRO:O	1.91	0.70
1:A:170:THR:OG1	1:A:210:GLU:HG2	1.91	0.70
2:B:626:ASP:CA	2:B:629:GLY:H	2.05	0.70
2:D:22:ALA:HB1	2:D:32:VAL:HG21	1.72	0.70
2:D:193:VAL:O	2:D:378:ARG:NH1	2.24	0.70
2:B:119:LEU:HB3	2:B:134:ILE:HG21	1.73	0.70
2:D:243:ILE:HG13	2:D:258:LEU:HD11	1.73	0.70
1:C:66:GLN:HG2	1:C:67:VAL:N	2.06	0.70
2:D:732:VAL:HG13	2:D:733:ASN:N	2.05	0.70
2:D:394:ILE:HG13	2:D:394:ILE:O	1.92	0.70
2:D:534:PRO:O	2:D:535:SER:HB3	1.92	0.70
2:D:119:LEU:HB3	2:D:134:ILE:HD11	1.72	0.70
1:C:58:ALA:CA	1:C:60:ILE:CG2	2.70	0.69
1:A:145:ILE:HG22	1:A:146:PRO:C	2.13	0.69
2:D:195:VAL:HG21	2:D:377:THR:HB	1.74	0.69
2:B:522:GLN:NE2	2:B:529:GLU:CG	2.41	0.69
1:C:185:ILE:HD13	1:C:186:ARG:N	2.08	0.69
1:A:263:ASN:HB3	1:A:264:GLY:HA2	1.74	0.69
1:A:158:PHE:HZ	2:B:537:ILE:HG13	1.58	0.69
1:A:145:ILE:CG2	1:A:146:PRO:O	2.40	0.69
1:C:60:ILE:CG2	1:C:61:ASN:N	2.34	0.68
1:A:140:PHE:CD1	1:A:145:ILE:HG13	2.29	0.68
2:B:205:ILE:CG2	2:B:276:ILE:HB	2.24	0.68
2:B:605:TRP:HB3	2:D:740:LEU:HD12	1.76	0.68
2:D:791:ALA:HB1	2:D:792:SER:CB	2.23	0.68
2:B:429:ILE:HG22	2:B:433:LEU:CD2	2.24	0.68
2:D:253:THR:HG22	2:D:264:MET:CB	2.22	0.68
2:B:215:ARG:HE	2:B:395:THR:HG22	1.58	0.68
2:B:272:ILE:CG1	2:B:273:GLU:H	2.05	0.68
2:B:609:LYS:O	2:B:609:LYS:HG2	1.93	0.68
1:A:279:VAL:HA	1:A:282:ASN:ND2	2.06	0.68
2:B:165:ASN:N	2:B:165:ASN:HD22	1.90	0.68
2:B:56:HIS:HB3	2:B:63:ARG:N	2.09	0.68

Continued on next page...

Continued from previous page...

Atom-1	Atom-2	Interatomic distance (Å)	Clash overlap (Å)
1:A:158:PHE:CZ	2:B:537:ILE:HG13	2.29	0.67
2:B:596:ILE:HD12	2:B:612:VAL:CG2	2.25	0.67
2:B:429:ILE:HG22	2:B:433:LEU:HD22	1.76	0.67
2:D:345:GLY:H	2:D:346:ARG:HH11	1.43	0.67
2:D:427:THR:HG22	2:D:444:TRP:HE1	1.59	0.67
2:D:512:THR:HG21	2:D:551:GLY:HA3	1.75	0.67
2:D:512:THR:HB	2:D:571:GLU:OE1	1.94	0.67
2:B:617:LEU:HD12	2:B:680:LEU:HB3	1.76	0.67
1:A:169:GLN:HA	1:A:193:VAL:HG11	1.76	0.67
2:B:403:ARG:HH21	2:B:450:SER:HB3	1.61	0.67
1:A:311:ASP:OD1	1:A:313:ARG:HG3	1.95	0.66
1:C:61:ASN:O	1:C:62:GLU:C	2.33	0.66
2:B:763:GLN:HA	2:B:769:LEU:HD11	1.77	0.66
2:D:57:PRO:HG3	2:D:63:ARG:HH12	1.59	0.66
2:D:673:LEU:O	2:D:674:ASP:O	2.13	0.66
2:B:647:GLY:CA	1:C:91:THR:HB	2.25	0.66
2:B:24:GLN:HE22	2:B:183:ASN:CG	1.98	0.66
2:D:701:SER:HA	2:D:702:ARG:NH2	2.11	0.66
2:B:42:PHE:HB3	2:B:100:PRO:HD3	1.77	0.66
2:D:116:GLU:OE1	2:D:117:GLY:HA3	1.96	0.66
1:C:58:ALA:HA	1:C:60:ILE:CB	2.25	0.66
1:A:166:LEU:C	1:A:167:ARG:O	2.34	0.66
2:D:703:PHE:CE2	2:D:766:SER:O	2.49	0.65
1:A:107:HIS:CD2	1:A:109:VAL:H	2.15	0.65
1:C:214:VAL:HG22	1:C:292:GLY:HA3	1.77	0.65
2:B:701:SER:HB3	2:B:765:THR:HA	1.77	0.65
2:D:596:ILE:HG12	2:D:617:LEU:HD13	1.78	0.65
1:A:134:GLU:HA	1:A:134:GLU:OE2	1.96	0.65
2:D:64:VAL:CG2	2:D:114:PRO:HG2	2.26	0.65
1:A:170:THR:O	1:A:210:GLU:CG	2.33	0.65
2:D:770:GLU:O	2:D:774:ILE:HG12	1.96	0.65
1:A:178:MET:CE	1:A:280:LEU:HD23	2.26	0.65
2:D:32:VAL:HA	2:D:160:ILE:HG22	1.78	0.65
1:A:260:MET:SD	1:A:265:LYS:HE3	2.37	0.65
2:B:139:ALA:C	2:B:141:ALA:H	2.00	0.65
1:C:61:ASN:O	1:C:63:ALA:N	2.30	0.65
1:C:59:VAL:H	1:C:61:ASN:N	1.95	0.65
2:D:259:GLU:OE1	2:D:375:ARG:NH1	2.29	0.65
1:C:299:MET:HA	1:C:299:MET:CE	2.27	0.65
2:D:624:VAL:CG1	2:D:625:LEU:H	2.05	0.64
1:A:229:ASP:OD1	1:A:232:ARG:NH2	2.31	0.64

Continued on next page...

Continued from previous page...

Atom-1	Atom-2	Interatomic distance (Å)	Clash overlap (Å)
2:D:64:VAL:HG23	2:D:114:PRO:HG2	1.80	0.64
1:C:59:VAL:HA	1:C:60:ILE:C	2.16	0.64
2:B:139:ALA:O	2:B:141:ALA:N	2.30	0.64
1:A:133:ILE:HD12	2:B:576:PHE:CD1	2.32	0.64
2:D:624:VAL:HG12	2:D:625:LEU:H	1.58	0.64
2:B:586:ILE:HD12	2:B:586:ILE:N	2.05	0.64
2:B:225:ASN:H	2:B:385:GLY:H	1.45	0.64
1:C:192:ARG:HG3	1:C:207:HIS:CE1	2.33	0.64
2:B:62:LEU:HB2	2:B:63:ARG:HD2	1.79	0.64
2:D:717:ASN:ND2	2:D:717:ASN:O	2.30	0.64
2:B:305:ALA:HA	2:B:311:LEU:HD13	1.79	0.64
2:B:311:LEU:O	2:B:319:GLY:HA3	1.98	0.64
2:B:452:ARG:CG	2:B:452:ARG:HH11	1.92	0.64
2:D:166:ARG:HG3	2:D:166:ARG:O	1.96	0.64
2:D:192:ILE:HG12	2:D:375:ARG:HG2	1.80	0.64
2:D:624:VAL:CG1	2:D:625:LEU:N	2.60	0.64
2:B:55:GLN:O	2:B:56:HIS:ND1	2.31	0.64
2:B:462:VAL:O	2:B:463:GLU:C	2.35	0.64
2:B:427:THR:HG21	2:B:439:GLU:CD	2.18	0.64
2:D:653:TYR:O	2:D:654:LEU:HB3	1.99	0.63
2:D:641:ASN:O	2:D:641:ASN:ND2	2.30	0.63
2:D:120:CYS:O	2:D:134:ILE:HD12	1.99	0.63
2:B:192:ILE:HG12	2:B:375:ARG:HG2	1.80	0.63
2:B:626:ASP:CB	2:B:630:LYS:N	2.62	0.63
1:A:312:LEU:HD12	1:A:315:PHE:HD1	1.63	0.63
2:D:273:GLU:CG	2:D:306:ASP:OD1	2.46	0.63
2:B:562:ARG:N	2:B:563:GLN:HA	2.14	0.63
2:D:449:PRO:CD	2:D:455:MET:HE1	2.24	0.63
2:D:729:LYS:C	2:D:731:GLY:H	2.01	0.63
2:D:113:GLU:HB3	2:D:114:PRO:CD	2.29	0.62
2:D:627:LEU:CD1	2:D:631:LEU:HD23	2.28	0.62
2:B:626:ASP:CB	2:B:630:LYS:H	2.12	0.62
2:B:122:PHE:CD1	2:B:127:ILE:HD13	2.34	0.62
2:D:537:ILE:N	2:D:537:ILE:HD12	2.15	0.62
1:C:155:HIS:O	1:C:195:ARG:HD3	1.99	0.62
1:C:166:LEU:HD11	2:D:544:MET:HE1	1.81	0.62
1:C:66:GLN:HG2	1:C:67:VAL:H	1.64	0.62
1:C:58:ALA:HA	1:C:60:ILE:HD12	1.80	0.62
1:A:104:GLY:O	2:B:503:ASN:ND2	2.32	0.62
1:C:268:GLU:OE2	4:C:999:AMP:H3'	2.00	0.62
2:B:429:ILE:HG23	2:B:468:VAL:CG2	2.28	0.62

Continued on next page...

Continued from previous page...

Atom-1	Atom-2	Interatomic distance (Å)	Clash overlap (Å)
1:C:23:ALA:HA	1:C:74:ARG:HG3	1.81	0.62
2:B:729:LYS:O	2:B:732:VAL:HG22	1.99	0.62
2:B:740:LEU:HD21	2:B:756:LEU:HB2	1.82	0.62
2:D:256:VAL:HG21	2:D:376:ALA:HB2	1.81	0.62
2:B:226:VAL:O	2:B:226:VAL:HG22	2.00	0.62
1:A:155:HIS:CG	1:A:168:THR:HG21	2.34	0.61
1:A:251:THR:O	1:A:252:GLU:HB2	2.00	0.61
2:B:672:LYS:O	2:B:673:LEU:HB2	2.00	0.61
2:D:451:TRP:CD1	2:D:452:ARG:HG3	2.35	0.61
2:D:26:THR:HG22	2:D:32:VAL:N	2.10	0.61
2:B:272:ILE:CG1	2:B:273:GLU:N	2.63	0.61
1:C:65:GLU:HA	1:C:66:GLN:C	2.20	0.61
2:D:786:LYS:HD2	2:D:791:ALA:CB	2.27	0.61
2:D:111:ARG:C	2:D:113:GLU:H	2.03	0.61
2:D:56:HIS:HE1	2:D:58:ASN:HB3	1.55	0.61
1:A:185:ILE:HD11	1:A:212:LEU:CD1	2.16	0.61
1:A:145:ILE:CG2	1:A:146:PRO:C	2.68	0.61
2:D:253:THR:CG2	2:D:264:MET:HB2	2.28	0.61
2:B:205:ILE:HG22	2:B:276:ILE:CB	2.30	0.61
2:D:626:ASP:O	2:D:627:LEU:C	2.37	0.61
1:A:205:MET:O	1:A:206:PHE:HB3	1.99	0.61
1:A:269:VAL:HG13	1:A:302:LEU:CD1	2.31	0.61
1:C:225:GLY:HA2	2:D:476:ASP:HB3	1.83	0.61
1:C:124:GLY:HA3	1:C:186:ARG:HH11	1.66	0.61
2:D:115:SER:C	2:D:116:GLU:O	2.38	0.61
2:D:452:ARG:CG	2:D:452:ARG:HH11	2.05	0.61
2:B:78:VAL:CG1	2:B:115:SER:HB3	2.28	0.61
2:B:427:THR:HG23	2:B:444:TRP:HE1	1.66	0.61
2:D:121:SER:HA	2:D:135:ILE:HG13	1.82	0.61
2:B:734:GLN:HG3	2:B:777:THR:HG21	1.83	0.61
2:B:68:ASN:ND2	2:B:143:ILE:HG21	2.15	0.60
2:B:271:ARG:HH21	2:B:321:HIS:HD2	1.47	0.60
2:D:634:VAL:HG12	2:D:635:GLU:N	2.16	0.60
2:D:119:LEU:HB3	2:D:134:ILE:CD1	2.31	0.60
2:B:31:GLU:HG2	2:B:161:SER:HB2	1.83	0.60
2:D:631:LEU:C	2:D:633:GLU:H	2.05	0.60
1:C:166:LEU:HD11	2:D:544:MET:CE	2.31	0.60
2:D:56:HIS:CG	2:D:57:PRO:HA	2.35	0.60
2:D:659:ILE:HD12	2:D:684:LEU:HD22	1.83	0.60
1:A:202:HIS:CE1	4:A:992:AMP:O2P	2.55	0.60
2:B:24:GLN:NE2	2:B:183:ASN:OD1	2.31	0.60

Continued on next page...

Continued from previous page...

Atom-1	Atom-2	Interatomic distance (Å)	Clash overlap (Å)
2:B:644:LEU:HD13	2:B:649:SER:CB	2.27	0.60
2:D:55:GLN:CA	2:D:56:HIS:O	2.48	0.60
2:D:56:HIS:CB	2:D:57:PRO:CA	2.72	0.60
2:B:630:LYS:HB3	2:B:631:LEU:C	2.22	0.60
2:B:576:PHE:CD1	2:B:588:GLN:HG2	2.37	0.60
2:B:269:LYS:O	2:B:272:ILE:HD12	2.01	0.60
2:D:499:LYS:CD	2:D:570:PHE:HE1	2.10	0.60
1:C:242:ARG:HB2	1:C:257:VAL:O	2.01	0.60
2:B:137:LEU:O	2:B:139:ALA:N	2.33	0.60
2:D:47:VAL:CG2	2:D:142:PRO:O	2.49	0.60
2:D:76:ASP:OD2	2:D:114:PRO:HB3	2.02	0.59
1:C:61:ASN:O	1:C:64:LYS:N	2.32	0.59
2:B:627:LEU:HD22	1:C:100:ARG:HH12	1.67	0.59
2:D:473:ASN:H	2:D:473:ASN:HD22	1.48	0.59
2:D:566:ARG:HG3	2:D:566:ARG:HH11	1.68	0.59
2:B:209:ALA:H	2:B:210:PRO:HD3	1.68	0.59
2:D:643:ALA:HB1	2:D:669:LEU:CD2	2.33	0.59
1:C:300:GLU:H	1:C:300:GLU:CD	2.05	0.59
2:B:633:GLU:HB3	2:B:655:LYS:H	1.66	0.59
1:A:140:PHE:HA	1:A:145:ILE:HG12	1.81	0.59
1:A:149:HIS:ND1	1:A:150:PRO:HD2	2.17	0.59
2:D:127:ILE:HG12	2:D:239:ARG:CZ	2.32	0.59
2:D:19:ASP:OD1	2:D:19:ASP:N	2.35	0.59
2:B:787:GLU:HG3	2:B:787:GLU:O	2.03	0.59
2:D:263:PRO:HB2	2:D:360:TYR:CE2	2.38	0.59
1:A:133:ILE:CD1	2:B:576:PHE:CD1	2.85	0.59
2:D:26:THR:CG2	2:D:32:VAL:H	2.12	0.59
2:D:634:VAL:CG1	2:D:635:GLU:N	2.66	0.59
2:D:205:ILE:HD11	2:D:392:ILE:HB	1.83	0.59
2:B:666:HIS:ND1	2:B:668:GLU:OE1	2.35	0.59
1:A:300:GLU:CB	1:A:312:LEU:CD1	2.79	0.59
1:C:108:PRO:HG3	1:C:326:PHE:CD2	2.37	0.59
2:B:257:LEU:HA	2:B:262:GLN:O	2.03	0.59
2:B:750:ALA:HB3	2:B:753:TYR:HD1	1.68	0.59
1:A:140:PHE:HD1	1:A:145:ILE:HG13	1.66	0.59
1:A:314:SER:HA	1:A:317:GLU:HG3	1.85	0.59
1:A:143:LEU:HD11	1:A:171:SER:HB3	1.84	0.58
2:D:49:GLU:HB3	2:D:89:ARG:HD3	1.85	0.58
2:D:711:ALA:HB3	2:D:793:LEU:O	2.03	0.58
2:D:689:LEU:O	2:D:689:LEU:HG	2.02	0.58
1:C:62:GLU:C	1:C:64:LYS:H	2.05	0.58

Continued on next page...

Continued from previous page...

Atom-1	Atom-2	Interatomic distance (Å)	Clash overlap (Å)
2:D:515:PHE:HA	2:D:543:ALA:O	2.03	0.58
2:B:90:VAL:HG13	2:B:91:ALA:N	2.17	0.58
2:D:735:VAL:HA	2:D:762:LEU:HD23	1.86	0.58
2:D:272:ILE:O	2:D:306:ASP:HB2	2.03	0.58
1:A:107:HIS:CG	1:A:108:PRO:HD2	2.38	0.58
2:D:142:PRO:O	2:D:144:GLY:N	2.36	0.58
1:C:62:GLU:C	1:C:64:LYS:N	2.57	0.58
2:D:32:VAL:HB	2:D:158:ILE:CD1	2.32	0.58
2:D:473:ASN:N	2:D:473:ASN:ND2	2.49	0.58
1:C:218:ILE:HG12	1:C:222:ASN:HD22	1.67	0.58
2:D:306:ASP:OD2	2:D:306:ASP:C	2.42	0.58
2:D:713:VAL:O	2:D:714:VAL:HG23	2.04	0.58
1:C:60:ILE:O	1:C:61:ASN:C	2.42	0.58
2:D:762:LEU:HD12	2:D:774:ILE:HG23	1.85	0.58
2:D:370:HIS:O	2:D:374:GLU:HG2	2.04	0.58
1:A:156:ASP:CB	1:A:196:ASN:HB3	2.34	0.58
2:B:629:GLY:HA2	2:B:692:ARG:HB2	1.85	0.58
1:C:139:ASN:HD21	1:C:168:THR:H	1.51	0.58
1:C:17:GLN:C	1:C:19:SER:H	2.06	0.58
2:B:652:ILE:HD11	2:B:662:VAL:HG22	1.85	0.58
1:C:65:GLU:HG2	1:C:65:GLU:O	2.04	0.58
2:B:111:ARG:HH11	2:B:111:ARG:HG3	1.69	0.58
1:A:107:HIS:HE1	1:A:315:PHE:O	1.87	0.58
1:A:166:LEU:CD1	2:B:544:MET:HE1	2.32	0.58
2:B:698:ARG:H	1:C:325:GLN:HE22	1.50	0.57
2:B:287:LEU:O	2:B:294:GLU:HA	2.04	0.57
2:B:644:LEU:HA	2:B:666:HIS:H	1.68	0.57
1:C:251:THR:OG1	1:C:254:SER:HB3	2.05	0.57
2:B:750:ALA:O	2:B:753:TYR:HB2	2.04	0.57
2:B:214:PRO:HD2	2:B:337:PHE:HD2	1.69	0.57
2:D:626:ASP:CB	2:D:627:LEU:HD12	2.35	0.57
1:A:145:ILE:HG21	1:A:146:PRO:O	2.03	0.57
2:D:319:GLY:C	2:D:321:HIS:H	2.05	0.57
2:D:732:VAL:CG1	2:D:733:ASN:H	2.09	0.57
2:B:621:LEU:O	2:B:625:LEU:N	2.31	0.57
1:C:258:ASP:HA	1:C:267:LEU:O	2.04	0.57
1:C:304:MET:HA	1:C:309:VAL:HB	1.85	0.57
2:D:735:VAL:HB	2:D:762:LEU:HD23	1.87	0.57
1:C:301:ARG:HD2	4:C:999:AMP:C2	2.39	0.57
1:A:202:HIS:HE1	4:A:992:AMP:O2P	1.86	0.57
2:B:577:VAL:HG23	2:B:587:ARG:HB3	1.87	0.57

Continued on next page...

Continued from previous page...

Atom-1	Atom-2	Interatomic distance (Å)	Clash overlap (Å)
2:B:195:VAL:HG21	2:B:377:THR:HG22	1.87	0.57
2:B:767:ARG:HH11	2:B:767:ARG:HB3	1.68	0.57
1:C:253:PRO:HB3	2:D:463:GLU:HA	1.87	0.57
2:D:533:LEU:HD23	2:D:536:PRO:HB3	1.87	0.57
2:D:626:ASP:CB	2:D:631:LEU:CD2	2.82	0.57
1:A:203:THR:N	4:A:992:AMP:N6	2.52	0.56
2:B:436:GLU:HB3	2:B:447:VAL:HB	1.86	0.56
1:C:88:ALA:O	1:C:91:THR:HG23	2.04	0.56
2:D:92:VAL:HG13	2:D:119:LEU:HD23	1.87	0.56
1:A:134:GLU:HB3	1:A:165:LEU:CD2	2.34	0.56
1:C:277:PRO:HG3	2:D:459:GLU:CD	2.25	0.56
2:D:115:SER:O	2:D:116:GLU:C	2.43	0.56
1:A:145:ILE:HG22	1:A:146:PRO:N	2.19	0.56
2:B:644:LEU:CD1	2:B:649:SER:HB2	2.32	0.56
1:A:243:PHE:HD2	1:A:257:VAL:HG12	1.69	0.56
1:C:257:VAL:HG23	1:C:269:VAL:HG23	1.86	0.56
2:B:2:LYS:HB3	2:B:159:GLU:HB2	1.86	0.56
2:B:376:ALA:HA	2:B:379:LEU:HD22	1.86	0.56
2:D:38:VAL:HG11	2:D:240:ARG:HD3	1.88	0.56
1:A:136:ASP:OD1	1:A:152:ARG:CZ	2.54	0.56
2:D:205:ILE:O	2:D:394:ILE:HD13	2.06	0.56
2:B:650:ALA:O	2:B:661:PHE:HD1	1.88	0.56
1:C:167:ARG:NH2	1:C:191:GLY:HA3	2.21	0.56
2:B:50:VAL:HA	2:B:67:VAL:HG12	1.88	0.56
1:A:210:GLU:HA	1:A:295:PHE:O	2.06	0.56
2:B:626:ASP:C	2:B:629:GLY:H	2.09	0.56
2:B:256:VAL:HG13	2:B:260:LEU:HD12	1.87	0.56
2:D:555:THR:O	2:D:559:ASN:ND2	2.38	0.56
1:A:178:MET:SD	1:A:212:LEU:HD11	2.46	0.56
2:B:741:PHE:CB	2:D:603:GLU:HG3	2.36	0.56
1:A:139:ASN:ND2	1:A:168:THR:HB	2.09	0.56
1:A:156:ASP:HB3	1:A:196:ASN:HB3	1.87	0.56
2:D:7:TRP:O	2:D:10:GLU:HB2	2.06	0.56
2:B:477:GLU:OE1	2:B:478:PRO:HD2	2.06	0.56
2:B:575:ARG:O	2:B:588:GLN:HA	2.06	0.56
2:B:283:GLU:HG2	2:B:299:ALA:HB2	1.88	0.56
1:C:241:ILE:H	1:C:241:ILE:HD13	1.71	0.55
2:B:488:HIS:CD2	2:B:488:HIS:H	2.23	0.55
2:B:121:SER:OG	2:B:124:GLU:HG2	2.06	0.55
1:C:58:ALA:CA	1:C:60:ILE:HG21	2.35	0.55
1:C:87:LEU:O	1:C:91:THR:CG2	2.54	0.55

Continued on next page...

Continued from previous page...

Atom-1	Atom-2	Interatomic distance (Å)	Clash overlap (Å)
2:B:708:ARG:O	2:B:760:LEU:HD12	2.06	0.55
1:C:62:GLU:O	1:C:65:GLU:N	2.35	0.55
2:B:576:PHE:CE1	2:B:588:GLN:HG2	2.41	0.55
1:A:252:GLU:OE2	2:B:463:GLU:CD	2.45	0.55
2:B:562:ARG:H	2:B:563:GLN:HA	1.71	0.55
2:D:280:MET:HG2	2:D:299:ALA:O	2.07	0.55
2:B:202:THR:CG2	2:B:392:ILE:HD11	2.36	0.55
2:D:470:GLY:HA3	2:D:473:ASN:HD21	1.71	0.55
2:D:338:PHE:CD2	2:D:360:TYR:CE1	2.94	0.55
2:B:783:GLU:HA	2:B:786:LYS:HB2	1.88	0.55
2:D:553:LEU:HA	2:D:556:VAL:CG1	2.37	0.55
1:C:228:HIS:HB2	1:C:243:PHE:HZ	1.70	0.55
2:B:127:ILE:HG13	2:B:239:ARG:CZ	2.37	0.55
2:B:209:ALA:N	2:B:210:PRO:HD3	2.22	0.55
2:D:408:LEU:HD23	2:D:458:GLU:HG3	1.89	0.55
1:A:158:PHE:CD2	1:A:195:ARG:O	2.54	0.55
2:D:729:LYS:HB3	2:D:729:LYS:NZ	2.21	0.55
2:B:53:CYS:SG	2:B:63:ARG:HG2	2.47	0.55
2:D:375:ARG:CG	2:D:375:ARG:NH1	2.47	0.55
1:C:301:ARG:CD	4:C:999:AMP:C2	2.89	0.55
2:B:139:ALA:C	2:B:141:ALA:N	2.59	0.55
2:B:483:LEU:HB3	1:C:123:LEU:HG	1.88	0.55
2:B:631:LEU:CD2	2:B:632:ASN:H	2.20	0.54
2:D:617:LEU:HD23	2:D:662:VAL:HG23	1.89	0.54
1:C:171:SER:HA	1:C:210:GLU:CD	2.28	0.54
2:D:764:ASP:OD2	2:D:765:THR:N	2.40	0.54
2:D:723:ILE:HG23	2:D:785:LEU:HD22	1.89	0.54
1:A:218:ILE:HD12	1:A:219:SER:N	2.22	0.54
2:B:294:GLU:CD	2:B:294:GLU:H	2.10	0.54
2:B:641:ASN:O	2:B:643:ALA:N	2.40	0.54
2:B:134:ILE:N	2:B:134:ILE:HD12	2.23	0.54
1:C:58:ALA:HB1	1:C:61:ASN:N	2.23	0.54
2:D:698:ARG:O	2:D:699:GLU:O	2.26	0.54
2:B:662:VAL:HG13	2:B:682:PHE:HB3	1.89	0.54
2:B:524:ILE:O	2:B:643:ALA:HB2	2.07	0.54
2:D:606:ASN:CG	2:D:606:ASN:O	2.46	0.54
2:D:733:ASN:HA	2:D:734:GLN:CB	2.30	0.54
2:B:59:ALA:HB2	2:B:111:ARG:HG2	1.89	0.54
2:D:641:ASN:HB2	2:D:661:PHE:CE1	2.41	0.54
2:B:272:ILE:O	2:B:273:GLU:HB2	2.08	0.54
2:B:256:VAL:HG21	2:B:376:ALA:HB2	1.90	0.54

Continued on next page...

Continued from previous page...

Atom-1	Atom-2	Interatomic distance (Å)	Clash overlap (Å)
2:B:7:TRP:HD1	2:B:7:TRP:O	1.91	0.54
2:B:7:TRP:CD1	2:B:7:TRP:O	2.61	0.54
2:D:76:ASP:OD2	2:D:114:PRO:CB	2.56	0.54
2:B:522:GLN:O	2:B:526:PRO:HA	2.07	0.54
1:C:220:PHE:O	1:C:223:LEU:N	2.40	0.54
1:C:140:PHE:HD1	1:C:145:ILE:HD13	1.72	0.54
2:B:724:LEU:HD12	2:B:738:VAL:HB	1.90	0.54
1:A:192:ARG:NH2	2:B:512:THR:O	2.41	0.54
2:B:521:GLN:NE2	2:B:546:LEU:H	2.06	0.54
1:C:21:VAL:HA	1:C:24:LEU:HB2	1.90	0.54
2:D:127:ILE:C	2:D:127:ILE:CD1	2.76	0.54
2:B:641:ASN:C	2:B:643:ALA:H	2.10	0.54
1:A:160:PHE:CE1	1:A:166:LEU:HG	2.43	0.54
2:D:560:GLN:HG2	2:D:675:LEU:HB3	1.89	0.54
2:D:109:LYS:HA	2:D:115:SER:HA	1.90	0.53
2:D:55:GLN:CG	2:D:56:HIS:HA	2.36	0.53
2:B:338:PHE:CB	2:B:343:ILE:HD11	2.39	0.53
2:B:647:GLY:HA3	1:C:91:THR:HB	1.90	0.53
2:B:457:ILE:HG22	2:B:460:ASP:CG	2.27	0.53
1:C:257:VAL:CG2	1:C:269:VAL:HG23	2.38	0.53
2:B:517:ASP:CA	2:B:540:GLU:O	2.56	0.53
1:A:151:ALA:O	1:A:154:ASP:N	2.41	0.53
2:B:630:LYS:HB3	2:B:631:LEU:CA	2.38	0.53
1:A:164:ARG:NH1	2:B:585:GLY:N	2.42	0.53
2:D:205:ILE:CG2	2:D:276:ILE:HB	2.36	0.53
2:B:674:ASP:O	2:B:675:LEU:CB	2.55	0.53
2:B:304:ILE:O	2:B:311:LEU:HD22	2.09	0.53
1:C:58:ALA:HA	1:C:60:ILE:HG21	1.89	0.53
1:A:270:LEU:HD12	1:A:270:LEU:C	2.29	0.53
1:A:218:ILE:CD1	1:A:293:PHE:CD1	2.92	0.53
2:D:630:LYS:NZ	2:D:691:ASP:OD2	2.42	0.53
1:A:312:LEU:HD12	1:A:315:PHE:CD1	2.44	0.53
2:B:370:HIS:CE1	2:B:393:ASP:OD1	2.62	0.53
1:C:82:ALA:O	1:C:85:ALA:N	2.41	0.53
2:D:312:ALA:HB1	2:D:317:PHE:O	2.09	0.53
2:B:565:ASN:OD1	2:B:566:ARG:N	2.34	0.53
2:D:729:LYS:C	2:D:731:GLY:N	2.63	0.53
2:D:57:PRO:CB	2:D:59:ALA:O	2.57	0.53
2:D:498:VAL:HG13	2:D:624:VAL:HG13	1.90	0.53
1:C:5:ALA:O	1:C:9:ALA:HB3	2.09	0.53
1:C:202:HIS:ND1	1:C:301:ARG:NH2	2.56	0.53

Continued on next page...

Continued from previous page...

Atom-1	Atom-2	Interatomic distance (Å)	Clash overlap (Å)
2:B:45:VAL:HG13	2:B:92:VAL:O	2.09	0.53
2:B:376:ALA:HA	2:B:379:LEU:CD2	2.40	0.52
1:C:71:LEU:C	1:C:73:ALA:H	2.13	0.52
2:B:32:VAL:HG12	2:B:160:ILE:HG22	1.91	0.52
2:D:634:VAL:HG23	2:D:654:LEU:HD13	1.91	0.52
2:D:549:TRP:O	2:D:553:LEU:HG	2.10	0.52
1:A:185:ILE:CG1	1:A:186:ARG:N	2.72	0.52
2:D:653:TYR:O	2:D:654:LEU:CB	2.57	0.52
2:D:263:PRO:HB2	2:D:360:TYR:HE2	1.74	0.52
1:C:218:ILE:O	1:C:218:ILE:HG23	2.09	0.52
1:A:244:ARG:NH1	1:A:256:GLU:OE2	2.42	0.52
2:B:165:ASN:H	2:B:165:ASN:ND2	2.01	0.52
2:B:4:SER:HB3	2:B:7:TRP:HB2	1.91	0.52
1:C:194:TYR:OH	2:D:514:SER:HB2	2.09	0.52
2:D:358:HIS:O	2:D:362:ARG:HD3	2.08	0.52
1:C:56:ALA:N	1:C:57:GLY:HA3	2.24	0.52
1:A:86:ARG:HG2	1:A:90:GLU:OE1	2.08	0.52
2:D:199:ILE:HD13	2:D:222:LYS:HG2	1.90	0.52
2:D:624:VAL:O	2:D:625:LEU:C	2.46	0.52
1:A:145:ILE:HG22	1:A:146:PRO:CA	2.39	0.52
2:D:735:VAL:HB	2:D:762:LEU:CD2	2.39	0.52
2:B:739:ASN:ND2	2:B:740:LEU:H	2.08	0.52
1:C:211:GLY:HA3	1:C:295:PHE:CZ	2.44	0.52
2:B:603:GLU:HA	2:B:603:GLU:OE1	2.10	0.52
2:B:123:SER:O	2:B:125:LEU:N	2.42	0.52
1:C:190:PRO:N	1:C:209:MET:HE3	2.25	0.52
1:C:58:ALA:HA	1:C:60:ILE:HB	1.79	0.52
1:C:255:ALA:HB2	2:D:471:TYR:HE2	1.75	0.52
1:A:247:TYR:CE1	2:B:165:ASN:HB3	2.45	0.52
2:D:672:LYS:O	2:D:674:ASP:CB	2.58	0.52
2:D:631:LEU:CG	2:D:632:ASN:H	2.21	0.52
1:C:241:ILE:CD1	1:C:241:ILE:H	2.22	0.52
2:D:731:GLY:HA2	2:D:735:VAL:HG13	1.92	0.52
2:D:548:LEU:HD23	2:D:571:GLU:HB3	1.91	0.52
2:B:344:THR:HA	2:B:361:GLU:CD	2.31	0.52
2:B:205:ILE:O	2:B:394:ILE:HD13	2.10	0.52
1:A:201:THR:C	1:A:312:LEU:HD23	2.29	0.52
1:A:218:ILE:CD1	1:A:293:PHE:HD1	2.23	0.52
2:B:521:GLN:HE22	2:B:545:ARG:HA	1.74	0.52
1:C:59:VAL:O	1:C:59:VAL:CG1	2.53	0.51
2:D:702:ARG:NE	2:D:702:ARG:N	2.55	0.51

Continued on next page...

Continued from previous page...

Atom-1	Atom-2	Interatomic distance (Å)	Clash overlap (Å)
1:C:322:PHE:O	1:C:325:GLN:HG2	2.10	0.51
2:D:43:HIS:O	2:D:97:ALA:HB1	2.09	0.51
2:D:288:VAL:HA	2:D:294:GLU:HA	1.91	0.51
2:B:626:ASP:C	2:B:628:THR:N	2.62	0.51
2:B:38:VAL:HB	2:B:155:ASP:O	2.09	0.51
2:B:264:MET:CE	2:B:376:ALA:HB2	2.41	0.51
1:A:86:ARG:O	1:A:90:GLU:HB2	2.10	0.51
1:A:318:ASN:HD22	1:A:323:LEU:HD21	1.74	0.51
1:C:257:VAL:O	1:C:258:ASP:HB2	2.10	0.51
1:A:269:VAL:HG13	1:A:302:LEU:HD13	1.91	0.51
2:D:142:PRO:C	2:D:144:GLY:H	2.13	0.51
1:C:185:ILE:C	1:C:185:ILE:HD13	2.30	0.51
1:C:23:ALA:HA	1:C:74:ARG:CG	2.40	0.51
2:B:264:MET:HE1	2:B:376:ALA:HB2	1.91	0.51
1:C:132:GLU:HA	1:C:167:ARG:HD3	1.92	0.51
2:D:24:GLN:HG3	2:D:182:LEU:HD22	1.92	0.51
2:D:55:GLN:C	2:D:56:HIS:O	2.48	0.51
2:B:631:LEU:HD23	2:B:632:ASN:N	2.26	0.51
2:B:630:LYS:CB	2:B:631:LEU:O	2.50	0.51
2:D:593:ALA:HB2	2:D:683:GLU:HG3	1.91	0.51
1:A:218:ILE:HD13	1:A:293:PHE:HD1	1.74	0.51
1:C:211:GLY:HA3	1:C:295:PHE:CE2	2.45	0.51
2:B:17:ASP:OD1	2:B:18:SER:N	2.44	0.51
2:D:709:ASP:HA	2:D:759:SER:HA	1.91	0.51
1:A:270:LEU:CB	1:A:297:MET:HB3	2.38	0.51
1:C:119:PHE:N	1:C:119:PHE:CD1	2.78	0.51
2:B:55:GLN:C	2:B:56:HIS:CG	2.84	0.51
2:B:48:GLY:HA2	2:B:143:ILE:HG23	1.93	0.51
2:B:517:ASP:HA	2:B:540:GLU:O	2.10	0.51
2:B:501:LEU:HA	2:D:504:ASP:OD2	2.11	0.51
2:D:452:ARG:NH1	2:D:452:ARG:HG2	1.97	0.51
2:B:90:VAL:O	2:B:137:LEU:HD22	2.11	0.51
2:B:790:GLN:CG	2:B:791:ALA:H	2.24	0.51
2:D:183:ASN:HB2	2:D:185:LEU:HD12	1.91	0.51
2:D:137:LEU:HB3	2:D:138:PRO:HD2	1.92	0.51
2:B:613:ASP:C	2:B:613:ASP:OD2	2.49	0.51
2:B:38:VAL:HG21	2:B:240:ARG:CD	2.40	0.50
2:D:605:TRP:CE3	2:D:606:ASN:HB2	2.45	0.50
1:A:118:SER:O	1:A:119:PHE:C	2.49	0.50
2:D:731:GLY:HA2	2:D:735:VAL:CG1	2.41	0.50
1:C:132:GLU:CD	2:D:574:LEU:HD11	2.31	0.50

Continued on next page...

Continued from previous page...

Atom-1	Atom-2	Interatomic distance (Å)	Clash overlap (Å)
1:A:86:ARG:HG2	1:A:90:GLU:CD	2.31	0.50
2:B:232:LEU:O	2:B:235:LYS:HB3	2.10	0.50
2:B:744:TYR:OH	2:B:747:LYS:N	2.44	0.50
2:B:614:PHE:CZ	1:C:94:VAL:HG22	2.46	0.50
2:D:441:LYS:HG2	2:D:441:LYS:O	2.09	0.50
2:D:85:ARG:HB3	2:D:88:LEU:HD11	1.91	0.50
2:D:672:LYS:O	2:D:674:ASP:CG	2.49	0.50
2:B:520:VAL:O	2:B:523:MET:HB2	2.11	0.50
1:A:185:ILE:O	1:A:186:ARG:HB2	2.11	0.50
1:A:300:GLU:CB	1:A:312:LEU:HD11	2.41	0.50
1:A:243:PHE:CD2	1:A:257:VAL:HG12	2.46	0.50
2:D:137:LEU:HB3	2:D:138:PRO:CD	2.42	0.50
2:B:177:ARG:HA	2:B:187:LEU:HD13	1.93	0.50
2:D:41:SER:HA	2:D:148:ARG:HH21	1.77	0.50
2:B:138:PRO:O	2:B:139:ALA:O	2.30	0.50
1:C:211:GLY:O	1:C:294:ALA:HA	2.11	0.50
2:D:54:ALA:O	2:D:55:GLN:O	2.29	0.50
2:B:525:HIS:HE1	2:B:547:SER:OG	1.94	0.50
2:D:670:GLU:OE2	2:D:671:ARG:NH2	2.44	0.50
2:D:53:CYS:O	2:D:54:ALA:O	2.30	0.50
1:A:97:PRO:HD2	2:B:605:TRP:CD1	2.47	0.50
2:D:346:ARG:N	2:D:346:ARG:HD2	2.27	0.50
2:B:687:ASN:C	2:B:687:ASN:OD1	2.49	0.50
1:C:58:ALA:HA	1:C:60:ILE:CG2	2.39	0.50
2:B:698:ARG:H	1:C:325:GLN:NE2	2.10	0.50
1:C:149:HIS:O	1:C:150:PRO:C	2.50	0.50
2:D:515:PHE:CD1	2:D:544:MET:HE1	2.37	0.49
2:B:591:MET:HE3	2:B:684:LEU:O	2.11	0.49
2:B:122:PHE:CD1	2:B:127:ILE:CD1	2.95	0.49
1:C:251:THR:HB	1:C:273:GLY:HA3	1.93	0.49
2:B:741:PHE:HB3	2:D:603:GLU:HG3	1.94	0.49
2:B:37:PRO:HA	2:B:156:ASN:HD22	1.75	0.49
1:A:268:GLU:HB3	1:A:301:ARG:HH21	1.78	0.49
2:D:279:ARG:NH1	2:D:280:MET:O	2.45	0.49
2:D:547:SER:OG	2:D:549:TRP:HB2	2.12	0.49
2:D:17:ASP:HB3	2:D:20:ALA:H	1.76	0.49
1:C:50:PRO:O	1:C:52:GLU:N	2.45	0.49
1:C:69:GLN:HE21	1:C:69:GLN:CA	2.23	0.49
2:B:123:SER:C	2:B:125:LEU:H	2.15	0.49
1:C:265:LYS:NZ	2:D:33:ASP:HB2	2.27	0.49
1:C:265:LYS:HD2	1:C:266:TRP:N	2.27	0.49

Continued on next page...

Continued from previous page...

Atom-1	Atom-2	Interatomic distance (Å)	Clash overlap (Å)
2:B:83:ASN:O	2:B:134:ILE:HD11	2.12	0.49
2:B:90:VAL:CG1	2:B:91:ALA:N	2.75	0.49
2:B:204:PRO:HD2	2:B:275:GLY:HA2	1.94	0.49
1:A:195:ARG:HD2	1:A:206:PHE:HE1	1.77	0.49
2:B:271:ARG:HH21	2:B:321:HIS:CD2	2.29	0.49
2:B:208:GLU:O	2:B:209:ALA:HB2	2.13	0.49
2:B:615:TYR:HB2	1:C:99:ARG:NH1	2.28	0.49
2:D:54:ALA:HB3	2:D:64:VAL:HG13	1.94	0.49
1:A:143:LEU:O	1:A:250:PHE:HB3	2.12	0.49
2:B:181:VAL:HG11	2:B:433:LEU:HD13	1.94	0.49
2:D:668:GLU:HG2	2:D:672:LYS:HE3	1.93	0.49
1:C:174:GLN:OE1	1:C:210:GLU:OE2	2.30	0.49
2:B:653:TYR:O	2:B:657:GLU:O	2.30	0.49
1:A:189:ALA:HB3	1:A:210:GLU:HB2	1.94	0.49
1:C:105:GLY:HA3	2:D:508:GLN:OE1	2.12	0.49
2:B:515:PHE:HD1	2:B:544:MET:CE	2.24	0.49
2:B:583:PRO:C	2:B:584:LEU:O	2.51	0.49
1:C:202:HIS:HA	4:C:999:AMP:HN61	1.76	0.49
2:B:625:LEU:C	2:B:627:LEU:H	2.09	0.49
1:C:54:PRO:N	1:C:55:ALA:CA	2.70	0.49
2:B:338:PHE:HB3	2:B:343:ILE:HD11	1.94	0.49
2:D:630:LYS:NZ	2:D:691:ASP:O	2.35	0.49
1:C:216:THR:O	1:C:217:ASN:O	2.30	0.49
2:B:794:ARG:HA	2:B:795:ASP:C	2.34	0.49
1:C:45:LEU:CB	1:C:46:ARG:HA	2.42	0.49
2:D:548:LEU:HD12	2:D:548:LEU:N	2.28	0.49
2:D:113:GLU:O	2:D:114:PRO:O	2.30	0.49
2:D:713:VAL:H	2:D:792:SER:HA	1.78	0.49
2:B:111:ARG:CG	2:B:111:ARG:HH11	2.26	0.49
1:C:242:ARG:O	1:C:257:VAL:HA	2.12	0.49
2:B:280:MET:HG3	2:B:299:ALA:O	2.13	0.49
2:B:710:ILE:HD11	2:B:758:ILE:HB	1.95	0.48
2:D:493:LEU:HB2	2:D:692:ARG:HD3	1.94	0.48
2:D:570:PHE:HA	2:D:593:ALA:O	2.13	0.48
2:D:634:VAL:HG22	2:D:654:LEU:CB	2.34	0.48
2:B:309:LYS:NZ	2:B:321:HIS:CE1	2.81	0.48
2:D:556:VAL:HG23	2:D:560:GLN:OE1	2.12	0.48
1:C:244:ARG:O	1:C:255:ALA:HB1	2.14	0.48
2:D:55:GLN:HG3	2:D:56:HIS:HA	1.95	0.48
1:C:59:VAL:H	1:C:60:ILE:CB	2.23	0.48
2:D:631:LEU:O	2:D:633:GLU:N	2.45	0.48

Continued on next page...

Continued from previous page...

Atom-1	Atom-2	Interatomic distance (Å)	Clash overlap (Å)
2:B:522:GLN:NE2	2:B:529:GLU:CD	2.66	0.48
1:A:230:PHE:HB2	2:D:485:MET:HE1	1.94	0.48
1:A:99:ARG:HB3	2:B:607:LEU:HD21	1.95	0.48
1:A:182:GLN:HG3	1:A:183:PRO:HD2	1.95	0.48
1:C:66:GLN:O	1:C:67:VAL:HG22	2.13	0.48
1:C:239:LEU:HD13	1:C:241:ILE:HD12	1.96	0.48
1:A:170:THR:C	1:A:210:GLU:HG3	2.24	0.48
2:B:644:LEU:HA	2:B:666:HIS:N	2.28	0.48
1:A:107:HIS:NE2	1:A:109:VAL:HG13	2.29	0.48
1:C:277:PRO:HG3	2:D:459:GLU:OE1	2.13	0.48
2:D:7:TRP:CD2	2:D:172:ILE:HD12	2.48	0.48
1:C:235:PHE:HA	1:C:306:ARG:NH1	2.29	0.48
2:B:631:LEU:CD2	2:B:632:ASN:N	2.77	0.48
2:B:236:GLU:HG3	2:B:240:ARG:HE	1.79	0.48
2:D:664:VAL:HB	2:D:680:LEU:HD13	1.96	0.48
2:B:252:VAL:HG21	2:B:380:LEU:HD13	1.95	0.48
2:D:30:LEU:N	2:D:30:LEU:HD23	2.29	0.48
2:D:57:PRO:HG3	2:D:63:ARG:HH22	1.78	0.48
2:B:432:ARG:CG	2:B:432:ARG:NH1	2.72	0.48
2:B:517:ASP:OD1	2:B:519:LYS:N	2.45	0.48
2:D:402:LYS:HB2	2:D:403:ARG:NH2	2.29	0.48
1:C:164:ARG:HH12	2:D:531:LEU:HD11	1.78	0.48
2:B:131:HIS:O	2:B:132:SER:HB2	2.14	0.48
2:B:600:ARG:HH12	2:B:616:ASP:CG	2.12	0.48
2:B:666:HIS:CE1	2:B:668:GLU:OE2	2.67	0.48
2:D:672:LYS:O	2:D:674:ASP:N	2.47	0.48
2:B:230:THR:HG23	2:B:234:MET:HE2	1.96	0.48
2:D:234:MET:O	2:D:238:LEU:HB2	2.14	0.48
2:D:762:LEU:CD1	2:D:774:ILE:HG23	2.43	0.48
2:D:634:VAL:HA	2:D:654:LEU:HA	1.96	0.48
2:D:11:TRP:CZ3	2:D:173:ILE:HG13	2.48	0.48
1:A:289:VAL:HG12	1:A:290:TYR:CD1	2.48	0.48
1:A:248:PHE:HD2	1:A:254:SER:HB3	1.79	0.48
1:A:174:GLN:HG3	1:A:212:LEU:HG	1.96	0.48
1:A:145:ILE:CG2	1:A:146:PRO:CA	2.91	0.48
2:D:306:ASP:HB3	2:D:311:LEU:HD21	1.95	0.48
1:A:107:HIS:HD2	1:A:109:VAL:H	1.59	0.48
1:C:140:PHE:CE2	1:C:165:LEU:HD11	2.48	0.48
2:B:410:ARG:HH22	2:B:421:ILE:C	2.17	0.48
1:C:279:VAL:O	1:C:282:ASN:HB2	2.14	0.48
1:C:32:LEU:HA	1:C:35:LYS:HD3	1.96	0.48

Continued on next page...

Continued from previous page...

Atom-1	Atom-2	Interatomic distance (Å)	Clash overlap (Å)
2:B:452:ARG:HH21	2:B:464:GLU:CD	2.17	0.48
2:D:338:PHE:HD2	2:D:360:TYR:CD1	2.32	0.48
2:B:703:PHE:O	2:B:763:GLN:NE2	2.47	0.48
1:C:205:MET:HE2	2:D:513:TYR:HA	1.95	0.48
2:B:778:VAL:C	2:B:780:LYS:H	2.17	0.48
1:A:195:ARG:HB3	1:A:196:ASN:H	1.56	0.47
1:A:146:PRO:HG2	1:A:147:GLY:H	1.80	0.47
1:A:203:THR:N	4:A:992:AMP:HN61	2.00	0.47
1:A:313:ARG:NH1	1:A:317:GLU:OE1	2.47	0.47
1:C:324:LYS:HZ2	1:C:325:GLN:HB3	1.79	0.47
1:C:284:GLY:C	1:C:285:ILE:HD12	2.35	0.47
2:D:55:GLN:O	2:D:63:ARG:HD3	2.14	0.47
1:A:107:HIS:HD2	1:A:109:VAL:N	2.12	0.47
1:A:269:VAL:HG13	1:A:302:LEU:HD11	1.95	0.47
1:C:265:LYS:HD2	1:C:266:TRP:H	1.80	0.47
2:B:599:ASN:HA	2:B:611:THR:HA	1.95	0.47
1:A:169:GLN:CA	1:A:193:VAL:HG11	2.43	0.47
2:D:571:GLU:N	2:D:593:ALA:O	2.44	0.47
2:B:425:GLN:NE2	2:B:469:TYR:CD1	2.82	0.47
2:D:9:ARG:HA	2:D:12:VAL:O	2.14	0.47
2:D:42:PHE:CE2	2:D:125:LEU:HD22	2.49	0.47
1:A:199:ASP:OD1	1:A:202:HIS:HD2	1.97	0.47
2:D:127:ILE:HD13	2:D:127:ILE:O	2.13	0.47
1:C:238:ASP:CG	1:C:238:ASP:O	2.53	0.47
2:D:111:ARG:C	2:D:113:GLU:N	2.68	0.47
2:D:184:GLN:HA	2:D:432:ARG:NH1	2.29	0.47
2:B:236:GLU:OE2	2:B:236:GLU:HA	2.15	0.47
2:B:306:ASP:OD1	2:B:308:ASN:HB3	2.14	0.47
1:C:192:ARG:NH2	2:D:511:ILE:HG23	2.29	0.47
2:B:316:ILE:HD11	2:B:343:ILE:HG23	1.96	0.47
2:B:647:GLY:HA2	1:C:91:THR:HB	1.97	0.47
2:B:134:ILE:H	2:B:134:ILE:HD12	1.80	0.47
2:D:133:GLY:O	2:D:134:ILE:HG22	2.14	0.47
2:B:769:LEU:H	2:B:769:LEU:HD22	1.79	0.47
2:D:165:ASN:O	2:D:166:ARG:C	2.53	0.47
2:D:605:TRP:CZ3	2:D:606:ASN:HB2	2.50	0.47
2:D:139:ALA:O	2:D:141:ALA:N	2.48	0.47
2:B:498:VAL:HG13	2:B:624:VAL:HG13	1.96	0.47
2:D:99:LEU:O	2:D:102:ASP:HA	2.15	0.47
2:D:705:ALA:HB2	2:D:763:GLN:CD	2.35	0.47
2:D:621:LEU:O	2:D:625:LEU:HB3	2.14	0.47

Continued on next page...

Continued from previous page...

Atom-1	Atom-2	Interatomic distance (Å)	Clash overlap (Å)
1:A:185:ILE:HG13	1:A:186:ARG:N	2.30	0.47
2:D:452:ARG:CG	2:D:452:ARG:NH1	2.72	0.47
1:C:268:GLU:CD	4:C:999:AMP:H3'	2.34	0.47
1:A:270:LEU:HA	1:A:297:MET:HA	1.96	0.47
2:D:671:ARG:HD3	2:D:671:ARG:HA	1.57	0.47
2:B:659:ILE:HD11	2:B:688:LYS:HD3	1.95	0.47
2:D:54:ALA:O	2:D:55:GLN:C	2.53	0.47
2:D:632:ASN:OD1	2:D:632:ASN:C	2.52	0.47
1:A:178:MET:CE	1:A:280:LEU:CD2	2.92	0.47
2:D:217:LEU:HB2	2:D:335:CYS:O	2.15	0.47
2:D:319:GLY:C	2:D:321:HIS:N	2.64	0.47
2:B:47:VAL:HG23	2:B:137:LEU:HD23	1.97	0.47
2:B:311:LEU:O	2:B:319:GLY:CA	2.62	0.47
2:B:427:THR:O	2:B:431:ARG:HB2	2.15	0.47
2:B:194:PRO:HA	2:B:374:GLU:CG	2.45	0.47
2:D:289:LEU:O	2:D:291:ASP:N	2.48	0.47
2:B:165:ASN:N	2:B:165:ASN:ND2	2.60	0.47
2:B:429:ILE:O	2:B:433:LEU:HD22	2.15	0.47
1:A:276:HIS:CD2	1:A:278:ASN:HB2	2.50	0.47
2:D:38:VAL:HG13	2:D:155:ASP:O	2.15	0.47
2:B:194:PRO:HA	2:B:374:GLU:HG3	1.97	0.47
2:B:502:LEU:HA	2:B:502:LEU:HD12	1.80	0.47
2:B:140:ASP:O	2:B:140:ASP:CG	2.53	0.47
1:A:144:ASN:HB2	1:A:279:VAL:HG22	1.96	0.46
1:A:140:PHE:CA	1:A:145:ILE:CG1	2.88	0.46
2:B:231:PRO:O	2:B:233:TRP:N	2.48	0.46
1:C:86:ARG:HG2	1:C:90:GLU:OE1	2.15	0.46
2:B:178:ASP:OD1	2:B:467:ARG:NH1	2.45	0.46
1:A:151:ALA:O	1:A:152:ARG:C	2.53	0.46
1:A:107:HIS:CD2	1:A:108:PRO:HD2	2.50	0.46
2:D:669:LEU:HA	2:D:672:LYS:HD2	1.97	0.46
2:D:271:ARG:HD3	2:D:321:HIS:CE1	2.49	0.46
1:C:83:LEU:HD13	1:C:83:LEU:O	2.16	0.46
1:C:196:ASN:OD1	2:D:537:ILE:HG23	2.16	0.46
2:B:767:ARG:NH1	2:B:767:ARG:CB	2.79	0.46
2:B:749:VAL:HG21	2:B:755:SER:HB2	1.97	0.46
1:C:112:THR:HG1	1:C:234:PHE:HZ	1.63	0.46
2:D:107:ALA:HA	2:D:116:GLU:HB3	1.98	0.46
1:A:86:ARG:HG2	1:A:90:GLU:OE2	2.16	0.46
2:B:230:THR:HG22	2:B:235:LYS:HB2	1.96	0.46
1:C:69:GLN:HA	1:C:69:GLN:NE2	2.26	0.46

Continued on next page...

Continued from previous page...

Atom-1	Atom-2	Interatomic distance (Å)	Clash overlap (Å)
2:D:699:GLU:OE1	2:D:699:GLU:CA	2.62	0.46
2:D:17:ASP:HB2	2:D:20:ALA:HB2	1.96	0.46
1:A:261:GLY:O	1:A:262:LYS:C	2.54	0.46
1:C:48:LEU:O	1:C:49:PRO:C	2.53	0.46
2:D:201:ASP:N	2:D:201:ASP:OD1	2.48	0.46
1:C:202:HIS:HE1	1:C:301:ARG:HH22	1.54	0.46
1:C:172:GLY:O	1:C:176:ARG:HG3	2.15	0.46
2:D:278:VAL:HG13	2:D:302:LEU:HD21	1.96	0.46
2:D:109:LYS:HB3	2:D:113:GLU:O	2.16	0.46
2:D:127:ILE:O	2:D:127:ILE:CD1	2.63	0.46
2:B:501:LEU:O	2:B:505:LYS:HG2	2.16	0.46
2:D:546:LEU:H	2:D:546:LEU:HD12	1.79	0.46
2:D:65:THR:HG23	2:D:77:ILE:O	2.16	0.46
2:D:203:LEU:HD21	2:D:269:LYS:HE3	1.97	0.46
2:D:346:ARG:H	2:D:346:ARG:HD2	1.80	0.46
1:A:244:ARG:HD3	1:A:258:ASP:OD1	2.16	0.46
1:C:235:PHE:HA	1:C:306:ARG:HH11	1.81	0.46
2:B:224:ILE:HG13	2:B:329:GLN:O	2.16	0.46
1:C:58:ALA:HB1	1:C:60:ILE:CB	2.40	0.46
1:A:205:MET:O	1:A:206:PHE:CB	2.62	0.46
2:D:666:HIS:ND1	2:D:668:GLU:OE1	2.49	0.46
1:A:213:ILE:O	1:A:292:GLY:HA2	2.15	0.46
2:B:568:ARG:HB2	2:B:596:ILE:HG22	1.97	0.46
1:A:108:PRO:HB2	1:A:303:THR:HG21	1.97	0.46
1:C:83:LEU:O	1:C:87:LEU:HG	2.14	0.46
2:B:575:ARG:HG2	2:B:591:MET:SD	2.55	0.46
1:A:98:GLY:HA2	2:D:615:TYR:HB3	1.98	0.46
1:A:279:VAL:CA	1:A:282:ASN:HD21	2.12	0.46
2:B:630:LYS:CB	2:B:631:LEU:CA	2.93	0.46
1:C:301:ARG:NE	4:C:999:AMP:C2	2.84	0.46
2:D:507:TYR:HB3	2:D:570:PHE:HD2	1.80	0.46
1:C:107:HIS:C	1:C:107:HIS:ND1	2.69	0.46
1:C:147:GLY:HA2	1:C:152:ARG:CZ	2.46	0.46
1:C:136:ASP:OD1	1:C:152:ARG:NH2	2.49	0.46
2:B:678:ARG:HD2	2:B:680:LEU:HD11	1.97	0.46
2:B:230:THR:HA	2:B:231:PRO:HD3	1.87	0.46
2:B:47:VAL:HG13	2:B:144:GLY:H	1.81	0.45
2:B:409:ARG:O	2:B:410:ARG:C	2.54	0.45
2:B:111:ARG:N	2:B:112:GLY:CA	2.71	0.45
1:A:257:VAL:HG22	1:A:270:LEU:HG	1.98	0.45
2:B:183:ASN:O	2:B:184:GLN:HG2	2.17	0.45

Continued on next page...

Continued from previous page...

Atom-1	Atom-2	Interatomic distance (Å)	Clash overlap (Å)
2:B:127:ILE:HG13	2:B:239:ARG:NH2	2.32	0.45
2:D:264:MET:SD	2:D:335:CYS:HB2	2.55	0.45
2:B:276:ILE:HG22	2:B:276:ILE:O	2.16	0.45
2:B:701:SER:HB2	2:B:703:PHE:HB2	1.99	0.45
2:B:73:ARG:HG3	2:B:73:ARG:HH11	1.81	0.45
1:C:320:LEU:HD13	1:C:320:LEU:HA	1.56	0.45
1:C:241:ILE:CD1	1:C:241:ILE:N	2.79	0.45
1:A:251:THR:HA	1:A:274:MET:O	2.16	0.45
1:A:119:PHE:N	1:A:119:PHE:CD1	2.82	0.45
2:B:522:GLN:HE22	2:B:529:GLU:CD	2.17	0.45
2:D:257:LEU:HA	2:D:262:GLN:O	2.16	0.45
2:B:672:LYS:O	2:B:673:LEU:CB	2.65	0.45
2:B:521:GLN:HE22	2:B:546:LEU:H	1.64	0.45
1:C:111:ARG:O	1:C:115:ARG:HB2	2.17	0.45
1:A:222:ASN:HA	2:B:477:GLU:O	2.17	0.45
1:C:192:ARG:CG	1:C:207:HIS:CE1	2.99	0.45
2:D:635:GLU:HG2	2:D:653:TYR:HB2	1.99	0.45
2:D:199:ILE:HG12	2:D:388:ALA:O	2.17	0.45
2:B:231:PRO:CG	2:B:383:ILE:HG12	2.47	0.45
1:C:58:ALA:HA	1:C:60:ILE:CD1	2.45	0.45
1:C:64:LYS:O	1:C:65:GLU:HB3	2.17	0.45
2:D:631:LEU:C	2:D:633:GLU:N	2.70	0.45
2:B:110:LEU:O	2:B:111:ARG:CB	2.65	0.45
2:B:56:HIS:HB2	2:B:59:ALA:O	2.17	0.45
2:D:644:LEU:HD13	2:D:649:SER:CB	2.40	0.45
2:B:625:LEU:HA	2:B:625:LEU:HD23	1.47	0.45
2:B:272:ILE:CD1	2:B:273:GLU:H	2.29	0.45
1:A:304:MET:HG2	1:A:309:VAL:HB	1.99	0.45
1:C:149:HIS:O	1:C:151:ALA:N	2.50	0.45
1:C:311:ASP:OD1	1:C:313:ARG:HB3	2.16	0.45
1:A:190:PRO:HA	1:A:208:GLN:O	2.16	0.45
1:A:176:ARG:NH2	1:A:176:ARG:HG3	2.32	0.45
2:D:113:GLU:O	2:D:114:PRO:C	2.55	0.44
1:C:65:GLU:N	1:C:66:GLN:O	2.50	0.44
2:B:56:HIS:O	2:B:58:ASN:N	2.50	0.44
2:D:517:ASP:OD1	2:D:519:LYS:CG	2.64	0.44
1:C:124:GLY:HA3	1:C:186:ARG:NH1	2.30	0.44
1:A:143:LEU:O	1:A:144:ASN:HB3	2.17	0.44
2:D:731:GLY:O	2:D:732:VAL:HG12	2.16	0.44
1:A:304:MET:O	1:A:308:GLY:N	2.49	0.44
2:B:705:ALA:HB2	2:B:763:GLN:NE2	2.32	0.44

Continued on next page...

Continued from previous page...

Atom-1	Atom-2	Interatomic distance (Å)	Clash overlap (Å)
2:B:221:VAL:O	2:B:221:VAL:HG13	2.17	0.44
2:B:518:PRO:HG3	2:B:543:ALA:HB2	1.99	0.44
2:D:561:ASN:C	2:D:563:GLN:H	2.20	0.44
2:D:271:ARG:HD3	2:D:321:HIS:NE2	2.33	0.44
2:D:271:ARG:NH1	2:D:321:HIS:O	2.50	0.44
2:D:532:LEU:O	2:D:534:PRO:HD3	2.16	0.44
2:D:183:ASN:C	2:D:185:LEU:H	2.21	0.44
1:C:143:LEU:HD22	1:C:250:PHE:CD2	2.53	0.44
2:D:151:LEU:O	2:D:152:LYS:C	2.55	0.44
2:B:424:GLU:CD	2:B:424:GLU:H	2.21	0.44
2:D:621:LEU:HD12	2:D:625:LEU:HD22	1.98	0.44
2:B:630:LYS:CB	2:B:631:LEU:HA	2.47	0.44
2:B:460:ASP:O	2:B:463:GLU:HG2	2.17	0.44
1:C:218:ILE:C	1:C:218:ILE:HD13	2.38	0.44
1:C:105:GLY:CA	2:D:508:GLN:OE1	2.65	0.44
2:B:581:GLN:HE21	2:B:581:GLN:HB3	1.60	0.44
2:B:540:GLU:HG3	2:B:541:MET:HG3	1.99	0.44
1:C:133:ILE:HD12	2:D:576:PHE:CD1	2.53	0.44
2:B:499:LYS:HG2	2:B:570:PHE:CE1	2.53	0.44
1:A:204:PRO:HD2	2:B:513:TYR:CE1	2.52	0.44
1:A:205:MET:HG2	1:A:206:PHE:N	2.32	0.44
2:D:375:ARG:HA	2:D:375:ARG:HD3	1.78	0.44
2:B:56:HIS:O	2:B:57:PRO:C	2.56	0.44
1:A:302:LEU:HA	1:A:302:LEU:HD12	1.85	0.44
2:D:337:PHE:CZ	2:D:401:PRO:CG	3.00	0.44
2:D:416:LEU:HD23	2:D:416:LEU:HA	1.87	0.44
2:B:52:GLU:OE2	2:B:52:GLU:HA	2.17	0.44
2:D:108:ALA:O	2:D:115:SER:HA	2.18	0.44
1:A:216:THR:HG22	1:A:289:VAL:O	2.18	0.44
2:B:226:VAL:HG11	2:B:328:THR:O	2.17	0.44
1:A:123:LEU:HD21	2:D:485:MET:HG2	2.00	0.44
1:A:199:ASP:OD1	1:A:202:HIS:CD2	2.71	0.44
1:C:300:GLU:HB2	1:C:315:PHE:CE1	2.53	0.44
1:A:299:MET:HA	1:A:299:MET:CE	2.48	0.44
2:D:625:LEU:CD1	2:D:659:ILE:HD11	2.48	0.43
2:D:617:LEU:HA	2:D:617:LEU:HD12	1.87	0.43
2:D:535:SER:N	2:D:536:PRO:HD3	2.33	0.43
2:B:731:GLY:O	2:B:733:ASN:N	2.51	0.43
1:A:150:PRO:O	1:A:154:ASP:HB2	2.18	0.43
2:D:26:THR:CG2	2:D:32:VAL:HG22	2.48	0.43
2:B:625:LEU:HD13	2:B:634:VAL:CG1	2.48	0.43

Continued on next page...

Continued from previous page...

Atom-1	Atom-2	Interatomic distance (Å)	Clash overlap (Å)
2:B:205:ILE:HG13	2:B:394:ILE:HD11	1.99	0.43
2:B:774:ILE:C	2:B:776:ALA:N	2.71	0.43
2:B:570:PHE:CD1	2:B:570:PHE:C	2.91	0.43
2:B:696:GLN:O	2:B:697:ALA:C	2.56	0.43
1:A:167:ARG:HH11	1:A:167:ARG:HD2	1.65	0.43
2:D:729:LYS:H	2:D:731:GLY:H	1.65	0.43
1:C:192:ARG:NH2	2:D:571:GLU:OE2	2.52	0.43
1:A:218:ILE:HG12	1:A:292:GLY:HA2	2.00	0.43
2:D:257:LEU:HD23	2:D:263:PRO:HA	2.00	0.43
2:D:427:THR:HG21	2:D:439:GLU:OE2	2.18	0.43
2:D:289:LEU:C	2:D:291:ASP:H	2.22	0.43
2:D:5:GLU:OE1	2:D:18:SER:OG	2.36	0.43
2:D:36:GLU:O	2:D:156:ASN:HA	2.17	0.43
2:D:55:GLN:H	2:D:55:GLN:HG2	1.50	0.43
2:B:515:PHE:CD1	2:B:544:MET:HE1	2.42	0.43
1:A:140:PHE:O	1:A:145:ILE:CB	2.67	0.43
1:A:269:VAL:HG12	1:A:270:LEU:N	2.33	0.43
2:D:262:GLN:HA	2:D:263:PRO:HD3	1.76	0.43
2:D:724:LEU:HD21	2:D:740:LEU:HB2	2.00	0.43
1:A:195:ARG:HD2	1:A:206:PHE:CE1	2.53	0.43
1:C:301:ARG:NE	4:C:999:AMP:N1	2.67	0.43
1:C:29:VAL:HG11	1:C:75:LYS:HB3	1.99	0.43
2:D:241:CYS:HB3	2:D:258:LEU:HD22	1.99	0.43
2:B:661:PHE:O	2:B:682:PHE:HA	2.18	0.43
2:B:545:ARG:HG3	2:B:547:SER:O	2.18	0.43
1:C:194:TYR:CE1	1:C:205:MET:HG3	2.54	0.43
2:B:234:MET:O	2:B:234:MET:HG2	2.19	0.43
2:B:284:GLY:HA2	2:B:296:LYS:HE3	2.00	0.43
1:A:156:ASP:HB2	1:A:196:ASN:HB3	1.99	0.43
2:B:629:GLY:CA	2:B:692:ARG:HB2	2.47	0.43
2:B:344:THR:O	2:B:345:GLY:C	2.57	0.43
2:B:622:GLU:HB2	1:C:100:ARG:HD3	1.99	0.43
2:D:147:ILE:HD12	2:D:148:ARG:N	2.34	0.43
1:A:263:ASN:CB	1:A:264:GLY:CA	2.92	0.43
2:B:790:GLN:HG3	2:B:791:ALA:N	2.34	0.43
2:D:1:MET:HB2	2:D:2:LYS:H	1.58	0.43
2:B:289:LEU:N	2:B:293:THR:O	2.34	0.43
2:D:326:ASP:OD1	2:D:326:ASP:N	2.51	0.43
2:B:522:GLN:CD	2:B:529:GLU:HG3	2.31	0.43
2:D:536:PRO:HB2	2:D:537:ILE:HD12	2.01	0.43
2:B:352:LEU:HD12	2:B:352:LEU:HA	1.87	0.43

Continued on next page...

Continued from previous page...

Atom-1	Atom-2	Interatomic distance (Å)	Clash overlap (Å)
2:B:170:LEU:HD12	2:B:170:LEU:HA	1.86	0.43
2:B:629:GLY:O	2:B:630:LYS:O	2.36	0.43
2:B:55:GLN:HE22	2:B:63:ARG:HH21	1.67	0.43
2:D:673:LEU:O	2:D:674:ASP:C	2.56	0.43
2:B:225:ASN:ND2	2:B:227:LYS:HG2	2.34	0.43
2:B:741:PHE:HB2	2:D:603:GLU:HG3	2.00	0.43
1:A:123:LEU:HB3	2:D:483:LEU:HD13	1.99	0.43
2:D:431:ARG:CZ	2:D:437:VAL:HG23	2.48	0.43
2:D:565:ASN:O	2:D:565:ASN:CG	2.57	0.43
2:D:678:ARG:HG3	2:D:678:ARG:O	2.18	0.43
2:B:1:MET:O	2:B:1:MET:HG3	2.16	0.43
1:C:101:ILE:O	1:C:102:GLU:C	2.57	0.43
2:B:596:ILE:CD1	2:B:612:VAL:HG21	2.36	0.43
2:B:674:ASP:O	2:B:675:LEU:HB2	2.17	0.43
2:D:254:ASN:HA	2:D:254:ASN:HD22	1.66	0.43
1:A:167:ARG:CD	1:A:193:VAL:HG12	2.49	0.43
2:B:142:PRO:O	2:B:144:GLY:N	2.52	0.43
2:B:614:PHE:HA	2:B:680:LEU:HD21	2.00	0.43
2:D:703:PHE:HE2	2:D:766:SER:O	1.98	0.43
2:D:641:ASN:HB3	2:D:644:LEU:HD11	2.00	0.42
2:D:595:VAL:HA	2:D:680:LEU:O	2.19	0.42
2:D:545:ARG:HB2	2:D:547:SER:O	2.19	0.42
2:D:358:HIS:CD2	2:D:362:ARG:NH2	2.87	0.42
2:D:590:LEU:HD12	2:D:686:TRP:CD1	2.54	0.42
2:D:631:LEU:O	2:D:632:ASN:OD1	2.36	0.42
2:B:790:GLN:CG	2:B:791:ALA:N	2.82	0.42
2:B:224:ILE:N	2:B:329:GLN:O	2.45	0.42
2:B:715:ALA:O	2:B:717:ASN:N	2.49	0.42
2:D:624:VAL:O	2:D:626:ASP:N	2.52	0.42
1:C:301:ARG:O	1:C:305:LEU:HD23	2.19	0.42
1:A:201:THR:O	1:A:312:LEU:HD23	2.20	0.42
1:A:218:ILE:HD12	1:A:218:ILE:C	2.39	0.42
2:D:342:SER:HA	2:D:346:ARG:NH2	2.34	0.42
2:B:309:LYS:HZ1	2:B:321:HIS:CE1	2.37	0.42
1:C:324:LYS:NZ	1:C:325:GLN:HB3	2.33	0.42
2:B:291:ASP:OD1	2:B:293:THR:HG22	2.19	0.42
2:B:113:GLU:HB2	2:B:114:PRO:HD3	2.00	0.42
4:C:999:AMP:N3	4:C:999:AMP:H2'	2.35	0.42
2:B:111:ARG:CG	2:B:111:ARG:NH1	2.82	0.42
2:D:553:LEU:HA	2:D:556:VAL:HG13	2.00	0.42
2:B:774:ILE:O	2:B:778:VAL:HG12	2.19	0.42

Continued on next page...

Continued from previous page...

Atom-1	Atom-2	Interatomic distance (Å)	Clash overlap (Å)
2:B:172:ILE:O	2:B:173:ILE:C	2.57	0.42
2:D:215:ARG:HB2	2:D:395:THR:HG23	2.01	0.42
2:D:215:ARG:HD3	2:D:369:GLN:HB2	2.01	0.42
1:C:75:LYS:CG	1:C:75:LYS:O	2.51	0.42
2:B:338:PHE:HB2	2:B:343:ILE:HD11	2.00	0.42
2:B:138:PRO:O	2:B:139:ALA:C	2.58	0.42
1:C:71:LEU:C	1:C:73:ALA:N	2.72	0.42
1:C:244:ARG:HA	1:C:245:PRO:HD3	1.89	0.42
2:D:741:PHE:HE1	2:D:759:SER:HB3	1.84	0.42
2:D:17:ASP:HB2	2:D:20:ALA:CB	2.50	0.42
2:D:411:SER:O	2:D:412:LYS:C	2.56	0.42
2:B:425:GLN:NE2	2:B:469:TYR:HD1	2.17	0.42
1:A:264:GLY:HA3	1:A:265:LYS:HA	1.77	0.42
2:D:134:ILE:HG23	2:D:134:ILE:O	2.20	0.42
2:B:262:GLN:OE1	2:B:369:GLN:NE2	2.50	0.42
2:B:566:ARG:HG2	2:B:566:ARG:O	2.18	0.42
2:D:583:PRO:O	2:D:584:LEU:HB2	2.20	0.42
2:B:567:VAL:HG23	2:B:569:ILE:HG23	2.00	0.42
2:D:273:GLU:HG2	2:D:306:ASP:OD1	2.19	0.42
2:B:42:PHE:CE1	2:B:147:ILE:HD11	2.55	0.42
1:A:188:ILE:HB	1:A:189:ALA:H	1.76	0.42
2:B:12:VAL:HG12	2:B:185:LEU:HD12	2.02	0.42
2:D:537:ILE:H	2:D:537:ILE:HD12	1.82	0.42
1:C:219:SER:O	1:C:222:ASN:HB2	2.19	0.42
1:C:154:ASP:C	1:C:156:ASP:H	2.23	0.42
2:D:246:ILE:HG22	2:D:247:ASP:HB2	2.01	0.42
2:D:165:ASN:HD22	2:D:165:ASN:N	2.18	0.42
2:D:667:PRO:O	2:D:670:GLU:N	2.52	0.42
1:C:301:ARG:NH1	4:C:999:AMP:O3P	2.51	0.42
2:D:592:LEU:O	2:D:683:GLU:HA	2.20	0.42
3:A:980:PHE:N	4:A:992:AMP:O3'	2.48	0.42
2:B:734:GLN:HE21	2:B:734:GLN:H	1.68	0.42
2:D:208:GLU:HB3	2:D:279:ARG:HB3	2.02	0.42
2:B:747:LYS:O	2:B:747:LYS:HG2	2.20	0.42
2:B:714:VAL:HG22	2:B:715:ALA:H	1.85	0.42
2:D:79:CYS:SG	2:D:80:GLY:N	2.93	0.42
1:A:111:ARG:NH1	2:D:490:GLU:OE2	2.53	0.42
1:A:158:PHE:CZ	1:A:195:ARG:O	2.66	0.41
1:A:107:HIS:CD2	1:A:109:VAL:HG13	2.55	0.41
2:B:311:LEU:HB2	2:B:322:SER:OG	2.20	0.41
1:C:76:ALA:O	1:C:80:SER:OG	2.32	0.41

Continued on next page...

Continued from previous page...

Atom-1	Atom-2	Interatomic distance (Å)	Clash overlap (Å)
2:D:229:PRO:O	2:D:230:THR:C	2.58	0.41
2:D:600:ARG:NH1	2:D:616:ASP:OD2	2.44	0.41
2:D:461:LEU:HA	2:D:461:LEU:HD23	1.91	0.41
2:D:116:GLU:HB2	2:D:117:GLY:CA	2.50	0.41
1:A:143:LEU:CD1	1:A:171:SER:HB3	2.49	0.41
2:B:787:GLU:CG	2:B:787:GLU:O	2.66	0.41
2:B:90:VAL:HG11	2:B:119:LEU:HG	2.02	0.41
2:D:534:PRO:O	2:D:535:SER:CB	2.64	0.41
1:A:321:ARG:HH21	2:B:562:ARG:HD3	1.85	0.41
1:C:52:GLU:HA	1:C:53:ARG:HA	1.86	0.41
1:A:176:ARG:HH21	1:A:176:ARG:HG3	1.85	0.41
2:B:207:VAL:HG23	2:B:278:VAL:HB	2.02	0.41
2:D:53:CYS:O	2:D:54:ALA:C	2.58	0.41
2:D:77:ILE:HB	2:D:117:GLY:H	1.85	0.41
2:D:67:VAL:HB	2:D:77:ILE:HD12	2.03	0.41
1:C:59:VAL:CG2	1:C:62:GLU:HG2	2.40	0.41
2:B:528:VAL:O	2:B:529:GLU:HG2	2.20	0.41
2:B:788:ARG:HA	2:B:788:ARG:HH11	1.84	0.41
2:D:790:GLN:NE2	2:D:791:ALA:O	2.53	0.41
2:D:536:PRO:HG3	2:D:542:SER:HB3	2.03	0.41
2:D:346:ARG:H	2:D:346:ARG:CD	2.32	0.41
1:A:133:ILE:HD12	2:B:576:PHE:HD1	1.80	0.41
2:D:121:SER:H	2:D:124:GLU:HG3	1.85	0.41
2:B:209:ALA:H	2:B:210:PRO:CD	2.32	0.41
2:B:520:VAL:O	2:B:521:GLN:C	2.58	0.41
2:B:32:VAL:O	2:B:32:VAL:HG23	2.20	0.41
2:B:231:PRO:O	2:B:232:LEU:C	2.59	0.41
2:D:53:CYS:C	2:D:54:ALA:O	2.57	0.41
2:D:455:MET:HB2	2:D:455:MET:HE2	1.89	0.41
2:D:645:HIS:O	2:D:649:SER:HB3	2.20	0.41
2:D:345:GLY:H	2:D:346:ARG:NH1	2.12	0.41
2:B:4:SER:HB3	2:B:7:TRP:CB	2.50	0.41
2:B:790:GLN:HG3	2:B:791:ALA:H	1.85	0.41
2:D:597:CYS:HB2	2:D:679:THR:HG22	2.03	0.41
1:A:322:PHE:O	1:A:325:GLN:HG2	2.21	0.41
1:A:164:ARG:HH11	2:B:584:LEU:HB3	1.86	0.41
2:D:512:THR:HB	2:D:571:GLU:CD	2.41	0.41
2:D:536:PRO:C	2:D:538:SER:H	2.23	0.41
2:D:166:ARG:HB2	2:D:166:ARG:CZ	2.50	0.41
1:A:160:PHE:HE1	1:A:166:LEU:HG	1.83	0.41
1:A:145:ILE:HB	1:A:146:PRO:O	2.21	0.41

Continued on next page...

Continued from previous page...

Atom-1	Atom-2	Interatomic distance (Å)	Clash overlap (Å)
2:D:517:ASP:OD1	2:D:519:LYS:HG3	2.21	0.41
1:C:139:ASN:ND2	1:C:168:THR:H	2.17	0.41
2:D:72:ASP:HB3	2:D:73:ARG:H	1.69	0.41
2:B:163:THR:HA	2:B:164:PRO:HD3	1.91	0.41
2:D:278:VAL:O	2:D:278:VAL:HG12	2.19	0.41
1:A:202:HIS:HA	4:A:992:AMP:N6	2.36	0.41
2:B:657:GLU:O	2:B:659:ILE:HD13	2.20	0.41
2:D:644:LEU:HD22	2:D:663:GLY:HA3	2.03	0.41
1:C:299:MET:CE	1:C:299:MET:CA	2.96	0.41
2:B:67:VAL:HG22	2:B:77:ILE:HD12	2.03	0.41
2:D:97:ALA:O	2:D:104:LYS:NZ	2.43	0.41
2:B:790:GLN:CD	2:B:791:ALA:H	2.24	0.41
2:B:288:VAL:O	2:B:320:GLU:N	2.54	0.41
1:A:101:ILE:H	1:A:101:ILE:HG12	1.59	0.41
1:C:78:LEU:HD23	1:C:78:LEU:HA	1.90	0.41
2:B:123:SER:C	2:B:125:LEU:N	2.74	0.41
2:D:17:ASP:CB	2:D:20:ALA:H	2.33	0.41
2:B:635:GLU:HB2	2:B:653:TYR:HB2	2.03	0.41
2:D:506:GLY:O	2:D:568:ARG:HD3	2.21	0.41
2:D:224:ILE:H	2:D:224:ILE:HG13	1.70	0.41
2:D:708:ARG:HD3	2:D:708:ARG:HA	1.75	0.41
2:B:306:ASP:OD1	2:B:308:ASN:CB	2.69	0.40
2:D:682:PHE:C	2:D:682:PHE:CD2	2.94	0.40
2:D:673:LEU:C	2:D:674:ASP:O	2.60	0.40
2:B:89:ARG:HG2	2:B:141:ALA:HB3	2.02	0.40
1:C:21:VAL:HG12	1:C:24:LEU:HD22	2.04	0.40
1:A:99:ARG:NH2	2:B:606:ASN:OD1	2.55	0.40
2:D:778:VAL:CG2	2:D:779:ALA:N	2.84	0.40
1:C:262:LYS:CG	1:C:263:ASN:N	2.85	0.40
2:D:181:VAL:HB	2:D:432:ARG:HG3	2.03	0.40
2:B:432:ARG:NH1	2:B:432:ARG:HG2	2.22	0.40
2:D:524:ILE:O	2:D:643:ALA:HB2	2.21	0.40
2:D:643:ALA:HB1	2:D:669:LEU:HD22	2.03	0.40
2:B:89:ARG:CD	2:B:141:ALA:HB3	2.50	0.40
2:B:90:VAL:HG13	2:B:91:ALA:H	1.83	0.40
1:A:133:ILE:CD1	2:B:576:PHE:CE1	3.04	0.40
2:B:739:ASN:HD22	2:B:740:LEU:H	1.69	0.40
2:D:316:ILE:HG22	2:D:317:PHE:HB2	2.04	0.40
2:D:739:ASN:O	2:D:758:ILE:O	2.39	0.40
2:B:35:VAL:HG12	2:B:158:ILE:HB	2.04	0.40
2:B:452:ARG:CG	2:B:452:ARG:NH1	2.60	0.40

Continued on next page...

Continued from previous page...

Atom-1	Atom-2	Interatomic distance (Å)	Clash overlap (Å)
2:B:668:GLU:CD	2:B:668:GLU:N	2.74	0.40
2:D:173:ILE:HG23	2:D:174:GLY:N	2.37	0.40
2:B:662:VAL:HG13	2:B:682:PHE:CB	2.51	0.40
2:B:280:MET:O	2:B:281:ALA:HB2	2.20	0.40
2:D:767:ARG:HD3	2:D:769:LEU:HD23	2.02	0.40
1:C:60:ILE:O	1:C:61:ASN:O	2.39	0.40
1:A:295:PHE:CD2	1:A:295:PHE:C	2.94	0.40
1:C:167:ARG:HH21	1:C:191:GLY:HA3	1.86	0.40
2:B:121:SER:H	2:B:124:GLU:CG	2.35	0.40
2:B:514:SER:O	2:B:545:ARG:HD2	2.22	0.40
1:C:216:THR:O	1:C:217:ASN:C	2.58	0.40
1:A:221:THR:HG23	2:B:417:ILE:O	2.22	0.40
1:C:169:GLN:OE1	3:C:990:PHE:N	2.55	0.40

There are no symmetry-related clashes.

5.3 Torsion angles [i](#)

5.3.1 Protein backbone [i](#)

In the following table, the Percentiles column shows the percent Ramachandran outliers of the chain as a percentile score with respect to all X-ray entries followed by that with respect to entries of similar resolution.

The Analysed column shows the number of residues for which the backbone conformation was analysed, and the total number of residues.

Mol	Chain	Analysed	Favoured	Allowed	Outliers	Percentiles	
1	A	240/327 (73%)	197 (82%)	31 (13%)	12 (5%)	3	15
1	C	321/327 (98%)	231 (72%)	57 (18%)	33 (10%)	1	3
2	B	793/795 (100%)	631 (80%)	120 (15%)	42 (5%)	2	14
2	D	793/795 (100%)	628 (79%)	106 (13%)	59 (7%)	1	6
All	All	2147/2244 (96%)	1687 (79%)	314 (15%)	146 (7%)	1	7

All (146) Ramachandran outliers are listed below:

Mol	Chain	Res	Type
1	A	146	PRO
1	A	167	ARG

Continued on next page...

Continued from previous page...

Mol	Chain	Res	Type
1	A	184	PRO
1	A	189	ALA
1	A	217	ASN
2	B	52	GLU
2	B	111	ARG
2	B	132	SER
2	B	139	ALA
2	B	140	ASP
2	B	143	ILE
2	B	209	ALA
2	B	232	LEU
2	B	280	MET
2	B	346	ARG
2	B	564	GLN
2	B	602	GLU
2	B	630	LYS
2	B	677	GLY
2	B	788	ARG
1	C	27	VAL
1	C	48	LEU
1	C	49	PRO
1	C	50	PRO
1	C	51	GLU
1	C	60	ILE
1	C	61	ASN
1	C	62	GLU
1	C	63	ALA
1	C	66	GLN
1	C	67	VAL
1	C	146	PRO
1	C	151	ALA
1	C	184	PRO
1	C	239	LEU
2	D	55	GLN
2	D	56	HIS
2	D	102	ASP
2	D	116	GLU
2	D	118	MET
2	D	140	ASP
2	D	200	ASP
2	D	290	LEU
2	D	566	ARG

Continued on next page...

Continued from previous page...

Mol	Chain	Res	Type
2	D	624	VAL
2	D	626	ASP
2	D	627	LEU
2	D	642	PRO
2	D	673	LEU
2	D	674	ASP
2	D	699	GLU
2	D	759	SER
1	A	186	ARG
2	B	18	SER
2	B	71	GLY
2	B	200	ASP
2	B	273	GLU
2	B	345	GLY
2	B	584	LEU
2	B	716	GLU
1	C	54	PRO
1	C	58	ALA
1	C	72	ASN
1	C	76	ALA
1	C	83	LEU
1	C	152	ARG
1	C	217	ASN
1	C	261	GLY
1	C	262	LYS
2	D	54	ALA
2	D	86	GLN
2	D	143	ILE
2	D	320	GLU
2	D	581	GLN
2	D	655	LYS
2	D	747	LYS
2	D	787	GLU
1	A	262	LYS
2	B	566	ARG
2	B	654	LEU
1	C	150	PRO
1	C	197	ASP
2	D	5	GLU
2	D	17	ASP
2	D	58	ASN
2	D	114	PRO

Continued on next page...

Continued from previous page...

Mol	Chain	Res	Type
2	D	129	ASP
2	D	134	ILE
2	D	196	GLY
2	D	603	GLU
2	D	625	LEU
2	D	630	LYS
2	D	729	LYS
2	D	732	VAL
1	A	206	PHE
1	A	252	GLU
1	A	263	ASN
2	B	124	GLU
2	B	226	VAL
2	B	285	GLU
2	B	308	ASN
2	B	344	THR
2	B	675	LEU
2	B	697	ALA
2	B	732	VAL
1	C	15	ILE
1	C	65	GLU
1	C	258	ASP
2	D	69	VAL
2	D	165	ASN
2	D	203	LEU
2	D	211	GLU
2	D	321	HIS
2	D	536	PRO
2	D	563	GLN
2	D	632	ASN
2	D	654	LEU
2	D	667	PRO
1	A	188	ILE
2	B	129	ASP
2	B	184	GLN
2	B	270	ASP
2	B	281	ALA
2	B	642	PRO
2	B	779	ALA
1	C	82	ALA
1	C	218	ILE
2	D	144	GLY

Continued on next page...

Continued from previous page...

Mol	Chain	Res	Type
2	D	248	ALA
2	D	257	LEU
2	D	441	LYS
2	D	701	SER
2	D	754	LYS
2	B	199	ILE
1	C	59	VAL
1	C	145	ILE
2	D	95	ILE
2	D	535	SER
2	D	537	ILE
1	A	145	ILE
2	B	138	PRO
2	D	229	PRO
2	D	677	GLY
2	B	246	ILE
2	D	429	ILE
2	B	746	GLY

5.3.2 Protein sidechains ⓘ

In the following table, the Percentiles column shows the percent sidechain outliers of the chain as a percentile score with respect to all X-ray entries followed by that with respect to entries of similar resolution.

The Analysed column shows the number of residues for which the sidechain conformation was analysed, and the total number of residues.

Mol	Chain	Analysed	Rotameric	Outliers	Percentiles	
1	A	212/276 (77%)	164 (77%)	48 (23%)	1	5
1	C	240/276 (87%)	202 (84%)	38 (16%)	3	14
2	B	656/663 (99%)	496 (76%)	160 (24%)	1	4
2	D	657/663 (99%)	504 (77%)	153 (23%)	1	4
All	All	1765/1878 (94%)	1366 (77%)	399 (23%)	1	5

All (399) residues with a non-rotameric sidechain are listed below:

Mol	Chain	Res	Type
1	A	86	ARG
1	A	96	LEU
1	A	99	ARG

Continued on next page...

Continued from previous page...

Mol	Chain	Res	Type
1	A	101	ILE
1	A	103	ASN
1	A	106	LEU
1	A	109	VAL
1	A	123	LEU
1	A	127	VAL
1	A	134	GLU
1	A	141	ASP
1	A	145	ILE
1	A	154	ASP
1	A	164	ARG
1	A	165	LEU
1	A	167	ARG
1	A	168	THR
1	A	169	GLN
1	A	171	SER
1	A	173	VAL
1	A	178	MET
1	A	181	GLN
1	A	185	ILE
1	A	186	ARG
1	A	188	ILE
1	A	195	ARG
1	A	199	ASP
1	A	212	LEU
1	A	218	ILE
1	A	223	LEU
1	A	239	LEU
1	A	241	ILE
1	A	244	ARG
1	A	257	VAL
1	A	263	ASN
1	A	268	GLU
1	A	269	VAL
1	A	282	ASN
1	A	283	VAL
1	A	288	GLU
1	A	293	PHE
1	A	302	LEU
1	A	305	LEU
1	A	310	THR
1	A	313	ARG

Continued on next page...

Continued from previous page...

Mol	Chain	Res	Type
1	A	317	GLU
1	A	320	LEU
1	A	323	LEU
2	B	1	MET
2	B	6	LEU
2	B	12	VAL
2	B	16	ILE
2	B	23	ASN
2	B	26	THR
2	B	31	GLU
2	B	33	ASP
2	B	38	VAL
2	B	52	GLU
2	B	53	CYS
2	B	56	HIS
2	B	62	LEU
2	B	76	ASP
2	B	77	ILE
2	B	78	VAL
2	B	84	CYS
2	B	85	ARG
2	B	86	GLN
2	B	89	ARG
2	B	103	PHE
2	B	104	LYS
2	B	106	LYS
2	B	111	ARG
2	B	113	GLU
2	B	124	GLU
2	B	127	ILE
2	B	130	ASP
2	B	131	HIS
2	B	134	ILE
2	B	140	ASP
2	B	145	THR
2	B	147	ILE
2	B	152	LYS
2	B	155	ASP
2	B	157	THR
2	B	158	ILE
2	B	159	GLU
2	B	165	ASN

Continued on next page...

Continued from previous page...

Mol	Chain	Res	Type
2	B	170	LEU
2	B	175	VAL
2	B	177	ARG
2	B	178	ASP
2	B	184	GLN
2	B	189	GLN
2	B	193	VAL
2	B	207	VAL
2	B	208	GLU
2	B	225	ASN
2	B	227	LYS
2	B	244	ARG
2	B	246	ILE
2	B	249	VAL
2	B	269	LYS
2	B	272	ILE
2	B	285	GLU
2	B	293	THR
2	B	294	GLU
2	B	303	VAL
2	B	311	LEU
2	B	317	PHE
2	B	327	GLU
2	B	342	SER
2	B	344	THR
2	B	352	LEU
2	B	359	ARG
2	B	362	ARG
2	B	370	HIS
2	B	371	LYS
2	B	375	ARG
2	B	378	ARG
2	B	379	LEU
2	B	387	GLU
2	B	391	VAL
2	B	392	ILE
2	B	394	ILE
2	B	396	ASN
2	B	402	LYS
2	B	403	ARG
2	B	407	THR
2	B	408	LEU

Continued on next page...

Continued from previous page...

Mol	Chain	Res	Type
2	B	414	ASP
2	B	416	LEU
2	B	424	GLU
2	B	430	LEU
2	B	431	ARG
2	B	432	ARG
2	B	433	LEU
2	B	437	VAL
2	B	438	THR
2	B	445	GLN
2	B	452	ARG
2	B	457	ILE
2	B	472	ASN
2	B	473	ASN
2	B	476	ASP
2	B	477	GLU
2	B	479	VAL
2	B	487	THR
2	B	502	LEU
2	B	512	THR
2	B	515	PHE
2	B	519	LYS
2	B	520	VAL
2	B	533	LEU
2	B	537	ILE
2	B	538	SER
2	B	539	VAL
2	B	540	GLU
2	B	545	ARG
2	B	546	LEU
2	B	548	LEU
2	B	552	LEU
2	B	556	VAL
2	B	563	GLN
2	B	567	VAL
2	B	574	LEU
2	B	575	ARG
2	B	577	VAL
2	B	584	LEU
2	B	586	ILE
2	B	590	LEU
2	B	595	VAL

Continued on next page...

Continued from previous page...

Mol	Chain	Res	Type
2	B	611	THR
2	B	612	VAL
2	B	613	ASP
2	B	617	LEU
2	B	618	LYS
2	B	628	THR
2	B	630	LYS
2	B	631	LEU
2	B	641	ASN
2	B	662	VAL
2	B	668	GLU
2	B	671	ARG
2	B	676	ASN
2	B	678	ARG
2	B	685	GLU
2	B	688	LYS
2	B	689	LEU
2	B	700	ILE
2	B	714	VAL
2	B	716	GLU
2	B	724	LEU
2	B	728	LYS
2	B	732	VAL
2	B	733	ASN
2	B	734	GLN
2	B	738	VAL
2	B	739	ASN
2	B	751	GLU
2	B	756	LEU
2	B	760	LEU
2	B	761	ILE
2	B	768	THR
2	B	769	LEU
2	B	770	GLU
2	B	780	LYS
2	B	787	GLU
2	B	788	ARG
1	C	21	VAL
1	C	62	GLU
1	C	65	GLU
1	C	69	GLN
1	C	74	ARG

Continued on next page...

Continued from previous page...

Mol	Chain	Res	Type
1	C	75	LYS
1	C	83	LEU
1	C	91	THR
1	C	94	VAL
1	C	96	LEU
1	C	101	ILE
1	C	103	ASN
1	C	111	ARG
1	C	112	THR
1	C	115	ARG
1	C	123	LEU
1	C	126	THR
1	C	155	HIS
1	C	164	ARG
1	C	165	LEU
1	C	181	GLN
1	C	185	ILE
1	C	209	MET
1	C	218	ILE
1	C	238	ASP
1	C	241	ILE
1	C	246	SER
1	C	259	VAL
1	C	262	LYS
1	C	265	LYS
1	C	270	LEU
1	C	291	SER
1	C	302	LEU
1	C	312	LEU
1	C	313	ARG
1	C	320	LEU
1	C	323	LEU
1	C	324	LYS
2	D	1	MET
2	D	18	SER
2	D	19	ASP
2	D	21	LEU
2	D	30	LEU
2	D	36	GLU
2	D	47	VAL
2	D	50	VAL
2	D	52	GLU

Continued on next page...

Continued from previous page...

Mol	Chain	Res	Type
2	D	53	CYS
2	D	55	GLN
2	D	62	LEU
2	D	63	ARG
2	D	65	THR
2	D	66	LYS
2	D	67	VAL
2	D	68	ASN
2	D	72	ASP
2	D	74	LEU
2	D	77	ILE
2	D	95	ILE
2	D	102	ASP
2	D	104	LYS
2	D	110	LEU
2	D	111	ARG
2	D	121	SER
2	D	124	GLU
2	D	127	ILE
2	D	129	ASP
2	D	131	HIS
2	D	143	ILE
2	D	152	LYS
2	D	158	ILE
2	D	161	SER
2	D	165	ASN
2	D	172	ILE
2	D	181	VAL
2	D	182	LEU
2	D	198	THR
2	D	199	ILE
2	D	201	ASP
2	D	202	THR
2	D	203	LEU
2	D	211	GLU
2	D	222	LYS
2	D	227	LYS
2	D	244	ARG
2	D	269	LYS
2	D	272	ILE
2	D	276	ILE
2	D	279	ARG

Continued on next page...

Continued from previous page...

Mol	Chain	Res	Type
2	D	280	MET
2	D	282	LYS
2	D	290	LEU
2	D	294	GLU
2	D	304	ILE
2	D	308	ASN
2	D	317	PHE
2	D	322	SER
2	D	326	ASP
2	D	327	GLU
2	D	328	THR
2	D	330	ASN
2	D	341	LEU
2	D	348	ARG
2	D	362	ARG
2	D	375	ARG
2	D	379	LEU
2	D	381	ILE
2	D	392	ILE
2	D	394	ILE
2	D	395	THR
2	D	396	ASN
2	D	400	LEU
2	D	402	LYS
2	D	403	ARG
2	D	408	LEU
2	D	423	ASP
2	D	426	VAL
2	D	427	THR
2	D	430	LEU
2	D	437	VAL
2	D	438	THR
2	D	441	LYS
2	D	443	GLU
2	D	445	GLN
2	D	452	ARG
2	D	462	VAL
2	D	473	ASN
2	D	479	VAL
2	D	480	GLN
2	D	487	THR
2	D	510	VAL

Continued on next page...

Continued from previous page...

Mol	Chain	Res	Type
2	D	512	THR
2	D	515	PHE
2	D	519	LYS
2	D	522	GLN
2	D	528	VAL
2	D	532	LEU
2	D	537	ILE
2	D	538	SER
2	D	546	LEU
2	D	556	VAL
2	D	560	GLN
2	D	563	GLN
2	D	564	GLN
2	D	566	ARG
2	D	574	LEU
2	D	577	VAL
2	D	583	PRO
2	D	584	LEU
2	D	586	ILE
2	D	590	LEU
2	D	592	LEU
2	D	603	GLU
2	D	609	LYS
2	D	611	THR
2	D	621	LEU
2	D	623	SER
2	D	625	LEU
2	D	628	THR
2	D	630	LYS
2	D	631	LEU
2	D	632	ASN
2	D	639	GLU
2	D	657	GLU
2	D	664	VAL
2	D	668	GLU
2	D	671	ARG
2	D	674	ASP
2	D	678	ARG
2	D	688	LYS
2	D	689	LEU
2	D	691	ASP
2	D	692	ARG

Continued on next page...

Continued from previous page...

Mol	Chain	Res	Type
2	D	698	ARG
2	D	699	GLU
2	D	700	ILE
2	D	702	ARG
2	D	708	ARG
2	D	714	VAL
2	D	717	ASN
2	D	732	VAL
2	D	735	VAL
2	D	740	LEU
2	D	760	LEU
2	D	761	ILE
2	D	767	ARG
2	D	768	THR
2	D	771	GLU
2	D	780	LYS
2	D	786	LYS
2	D	790	GLN

Some sidechains can be flipped to improve hydrogen bonding and reduce clashes. All (59) such sidechains are listed below:

Mol	Chain	Res	Type
1	A	107	HIS
1	A	138	HIS
1	A	155	HIS
1	A	169	GLN
1	A	181	GLN
1	A	202	HIS
1	A	207	HIS
1	A	228	HIS
1	A	276	HIS
1	A	282	ASN
1	A	318	ASN
2	B	24	GLN
2	B	86	GLN
2	B	156	ASN
2	B	165	ASN
2	B	183	ASN
2	B	184	GLN
2	B	225	ASN
2	B	254	ASN
2	B	265	HIS

Continued on next page...

Continued from previous page...

Mol	Chain	Res	Type
2	B	321	HIS
2	B	350	HIS
2	B	370	HIS
2	B	420	HIS
2	B	521	GLN
2	B	525	HIS
2	B	560	GLN
2	B	581	GLN
2	B	641	ASN
2	B	734	GLN
2	B	739	ASN
2	B	763	GLN
1	C	66	GLN
1	C	69	GLN
1	C	138	HIS
1	C	139	ASN
1	C	149	HIS
1	C	174	GLN
1	C	181	GLN
1	C	207	HIS
1	C	208	GLN
1	C	222	ASN
1	C	240	GLN
1	C	276	HIS
1	C	325	GLN
2	D	56	HIS
2	D	156	ASN
2	D	165	ASN
2	D	225	ASN
2	D	254	ASN
2	D	445	GLN
2	D	473	ASN
2	D	480	GLN
2	D	521	GLN
2	D	525	HIS
2	D	564	GLN
2	D	641	ASN
2	D	763	GLN
2	D	790	GLN

5.3.3 RNA ⓘ

There are no RNA molecules in this entry.

5.4 Non-standard residues in protein, DNA, RNA chains ⓘ

There are no non-standard protein/DNA/RNA residues in this entry.

5.5 Carbohydrates ⓘ

There are no carbohydrates in this entry.

5.6 Ligand geometry ⓘ

4 ligands are modelled in this entry.

In the following table, the Counts columns list the number of bonds (or angles) for which Mogul statistics could be retrieved, the number of bonds (or angles) that are observed in the model and the number of bonds (or angles) that are defined in the chemical component dictionary. The Link column lists molecule types, if any, to which the group is linked. The Z score for a bond length (or angle) is the number of standard deviations the observed value is removed from the expected value. A bond length (or angle) with $|Z| > 2$ is considered an outlier worth inspection. RMSZ is the root-mean-square of all Z scores of the bond lengths (or angles).

Mol	Type	Chain	Res	Link	Bond lengths			Bond angles		
					Counts	RMSZ	# $ Z > 2$	Counts	RMSZ	# $ Z > 2$
3	PHE	A	980	-	9,12,12	0.35	0	9,15,15	0.28	0
4	AMP	A	992	-	20,25,25	1.40	3 (15%)	22,38,38	2.63	5 (22%)
3	PHE	C	990	-	9,12,12	0.48	0	9,15,15	0.25	0
4	AMP	C	999	-	20,25,25	1.48	3 (15%)	22,38,38	2.34	2 (9%)

In the following table, the Chirals column lists the number of chiral outliers, the number of chiral centers analysed, the number of these observed in the model and the number defined in the chemical component dictionary. Similar counts are reported in the Torsion and Rings columns. '-' means no outliers of that kind were identified.

Mol	Type	Chain	Res	Link	Chirals	Torsions	Rings
3	PHE	A	980	-	-	0/4/8/8	0/1/1/1
4	AMP	A	992	-	-	0/6/26/26	0/3/3/3
3	PHE	C	990	-	-	0/4/8/8	0/1/1/1
4	AMP	C	999	-	-	0/6/26/26	0/3/3/3

All (6) bond length outliers are listed below:

Mol	Chain	Res	Type	Atoms	Z	Observed(Å)	Ideal(Å)
4	A	992	AMP	C5-N7	-2.09	1.32	1.39
4	C	999	AMP	P-O3P	2.09	1.62	1.54
4	A	992	AMP	P-O3P	2.21	1.62	1.54
4	C	999	AMP	P-O1P	3.81	1.63	1.51
4	A	992	AMP	P-O1P	3.90	1.64	1.51
4	C	999	AMP	O4'-C1'	3.90	1.46	1.41

All (7) bond angle outliers are listed below:

Mol	Chain	Res	Type	Atoms	Z	Observed(°)	Ideal(°)
4	A	992	AMP	N3-C2-N1	-10.13	121.14	128.89
4	C	999	AMP	N3-C2-N1	-9.76	121.42	128.89
4	A	992	AMP	C4'-O4'-C1'	-3.26	106.14	109.72
4	A	992	AMP	O3P-P-O5'	-2.28	100.01	106.56
4	A	992	AMP	C2'-C1'-N9	2.16	117.59	114.29
4	C	999	AMP	C2'-C1'-N9	2.68	118.39	114.29
4	A	992	AMP	O2P-P-O5'	2.98	115.13	106.56

There are no chirality outliers.

There are no torsion outliers.

There are no ring outliers.

4 monomers are involved in 19 short contacts:

Mol	Chain	Res	Type	Clashes	Symm-Clashes
3	A	980	PHE	2	0
4	A	992	AMP	9	0
3	C	990	PHE	1	0
4	C	999	AMP	9	0

5.7 Other polymers

There are no such residues in this entry.

5.8 Polymer linkage issues

There are no chain breaks in this entry.

6 Fit of model and data ⓘ

6.1 Protein, DNA and RNA chains ⓘ

In the following table, the column labelled ‘#RSRZ> 2’ contains the number (and percentage) of RSRZ outliers, followed by percent RSRZ outliers for the chain as percentile scores relative to all X-ray entries and entries of similar resolution. The OWAB column contains the minimum, median, 95th percentile and maximum values of the occupancy-weighted average B-factor per residue. The column labelled ‘Q< 0.9’ lists the number of (and percentage) of residues with an average occupancy less than 0.9.

Mol	Chain	Analysed	<RSRZ>	#RSRZ>2	OWAB(Å ²)	Q<0.9
1	A	242/327 (74%)	-0.17	3 (1%) 81 55	50, 63, 87, 145	0
1	C	323/327 (98%)	0.39	29 (8%) 12 4	36, 89, 164, 169	8 (2%)
2	B	795/795 (100%)	-0.19	3 (0%) 93 79	51, 89, 128, 148	0
2	D	795/795 (100%)	-0.01	10 (1%) 79 52	58, 97, 132, 148	0
All	All	2155/2244 (96%)	-0.04	45 (2%) 67 36	36, 90, 138, 169	8 (0%)

All (45) RSRZ outliers are listed below:

Mol	Chain	Res	Type	RSRZ
1	C	19	SER	6.0
1	C	5	ALA	4.8
1	C	18	ALA	4.8
1	C	59	VAL	4.5
1	C	29	VAL	4.3
1	C	40	LEU	4.2
2	D	201	ASP	4.2
1	C	11	ALA	4.1
1	C	26	ASN	3.9
1	C	15	ILE	3.8
1	C	55	ALA	3.7
1	C	261	GLY	3.6
1	C	31	TYR	3.6
1	A	264	GLY	3.5
1	C	28	ARG	3.5
1	C	58	ALA	3.4
1	C	56	ALA	3.4
2	B	781	CYS	3.2
1	C	54	PRO	3.2
1	C	43	THR	3.0
1	A	87	LEU	3.0

Continued on next page...

Continued from previous page...

Mol	Chain	Res	Type	RSRZ
1	C	44	THR	2.8
2	D	211	GLU	2.7
2	D	114	PRO	2.7
1	C	41	GLN	2.5
1	C	57	GLY	2.5
1	C	243	PHE	2.5
1	C	45	LEU	2.4
1	C	254	SER	2.3
1	A	88	ALA	2.3
2	D	75	LEU	2.3
1	C	163	THR	2.3
2	D	202	THR	2.3
2	D	109	LYS	2.3
1	C	60	ILE	2.3
2	D	71	GLY	2.2
1	C	39	THR	2.2
1	C	62	GLU	2.2
2	B	785	LEU	2.2
2	D	345	GLY	2.2
1	C	16	SER	2.1
2	B	131	HIS	2.1
2	D	91	ALA	2.1
2	D	88	LEU	2.1
1	C	14	ALA	2.0

6.2 Non-standard residues in protein, DNA, RNA chains [i](#)

There are no non-standard protein/DNA/RNA residues in this entry.

6.3 Carbohydrates [i](#)

There are no carbohydrates in this entry.

6.4 Ligands [i](#)

In the following table, the Atoms column lists the number of modelled atoms in the group and the number defined in the chemical component dictionary. LLDF column lists the quality of electron density of the group with respect to its neighbouring residues in protein, DNA or RNA chains. The B-factors column lists the minimum, median, 95th percentile and maximum values of B factors of atoms in the group. The column labelled 'Q < 0.9' lists the number of atoms with occupancy less than 0.9.

Mol	Type	Chain	Res	Atoms	RSCC	RSR	LLDF	B-factors(\AA^2)	Q<0.9
3	PHE	A	980	12/12	0.89	0.38	2.44	73,80,87,87	0
4	AMP	A	992	23/23	0.91	0.37	2.37	96,99,101,101	0
4	AMP	C	999	23/23	0.80	0.34	1.12	137,145,147,147	0
3	PHE	C	990	12/12	0.93	0.30	0.20	95,98,99,99	0

6.5 Other polymers [i](#)

There are no such residues in this entry.