



Full wwPDB X-ray Structure Validation Report ⓘ

Feb 1, 2016 – 11:33 AM GMT

PDB ID : 3PCR
Title : Structure of EspG-Arf6 complex
Authors : Tomchick, D.R.; Alto, N.M.; Selyunin, A.S.
Deposited on : 2010-10-21
Resolution : 2.50 Å(reported)

This is a Full wwPDB X-ray Structure Validation Report for a publicly released PDB entry.
We welcome your comments at validation@mail.wwpdb.org
A user guide is available at
<http://wwpdb.org/validation/2016/XrayValidationReportHelp>
with specific help available everywhere you see the ⓘ symbol.

The following versions of software and data (see [references ⓘ](#)) were used in the production of this report:

MolProbity : 4.02b-467
Mogul : 1.7 (RC4), CSD as536be (2015)
Xtriage (Phenix) : 1.9-1692
EDS : rb-20026688
Percentile statistics : 20151230.v01 (using entries in the PDB archive December 30th 2015)
Refmac : 5.8.0135
CCP4 : 6.5.0
Ideal geometry (proteins) : Engh & Huber (2001)
Ideal geometry (DNA, RNA) : Parkinson et al. (1996)
Validation Pipeline (wwPDB-VP) : trunk26865

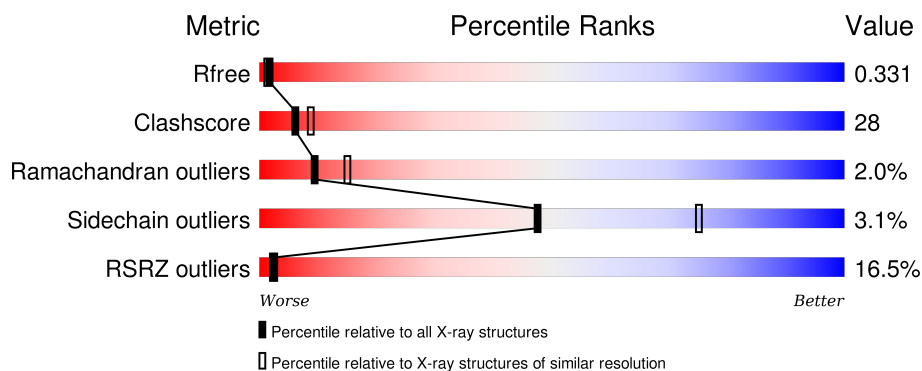
1 Overall quality at a glance

The following experimental techniques were used to determine the structure:

X-RAY DIFFRACTION


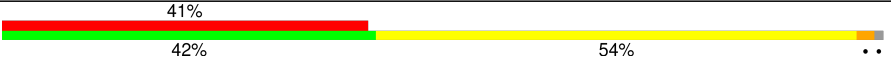
The reported resolution of this entry is 2.50 Å.

Percentile scores (ranging between 0-100) for global validation metrics of the entry are shown in the following graphic. The table shows the number of entries on which the scores are based.



Metric	Whole archive (#Entries)	Similar resolution (#Entries, resolution range(Å))
R_{free}	91344	3553 (2.50-2.50)
Clashscore	102246	4242 (2.50-2.50)
Ramachandran outliers	100387	4156 (2.50-2.50)
Sidechain outliers	100360	4158 (2.50-2.50)
RSRZ outliers	91569	3562 (2.50-2.50)

The table below summarises the geometric issues observed across the polymeric chains and their fit to the electron density. The red, orange, yellow and green segments on the lower bar indicate the fraction of residues that contain outliers for ≥ 3 , 2, 1 and 0 types of geometric quality criteria. A grey segment represents the fraction of residues that are not modelled. The numeric value for each fraction is indicated below the corresponding segment, with a dot representing fractions $\leq 5\%$. The upper red bar (where present) indicates the fraction of residues that have poor fit to the electron density. The numeric value is given above the bar.

Mol	Chain	Length	Quality of chain
1	A	357	
2	B	162	

2 Entry composition [i](#)

There are 5 unique types of molecules in this entry. The entry contains 4167 atoms, of which 0 are hydrogens and 0 are deuteriums.

In the tables below, the ZeroOcc column contains the number of atoms modelled with zero occupancy, the AltConf column contains the number of residues with at least one atom in alternate conformation and the Trace column contains the number of residues modelled with at most 2 atoms.

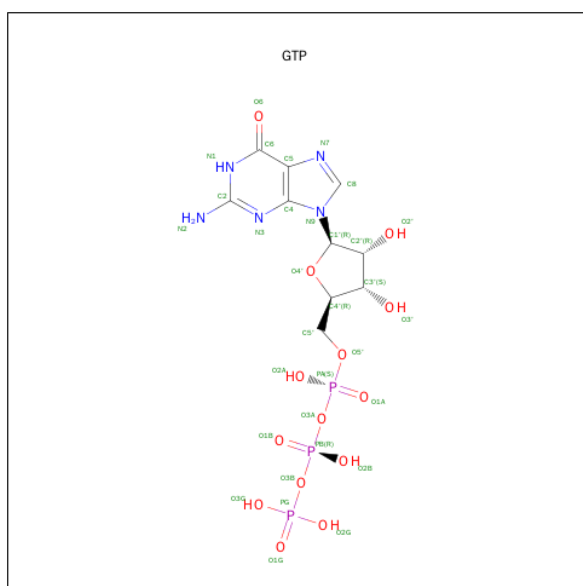
- Molecule 1 is a protein called EspG.

Mol	Chain	Residues	Atoms						ZeroOcc	AltConf	Trace
1	A	349	Total	C	N	O	S	Se	0	0	0
			2703	1676	472	540	6	9			

- Molecule 2 is a protein called ADP-ribosylation factor 6.

Mol	Chain	Residues	Atoms						ZeroOcc	AltConf	Trace
2	B	160	Total	C	N	O	S	Se	0	0	0
			1297	824	229	238	2	4			

- Molecule 3 is GUANOSINE-5'-TRIPHOSPHATE (three-letter code: GTP) (formula: $C_{10}H_{16}N_5O_{14}P_3$).



Mol	Chain	Residues	Atoms					ZeroOcc	AltConf
3	B	1	Total	C	N	O	P	0	0
			32	10	5	14	3		

- Molecule 4 is MAGNESIUM ION (three-letter code: MG) (formula: Mg).

Mol	Chain	Residues	Atoms		ZeroOcc	AltConf
4	B	1	Total 1	Mg 1	0	0

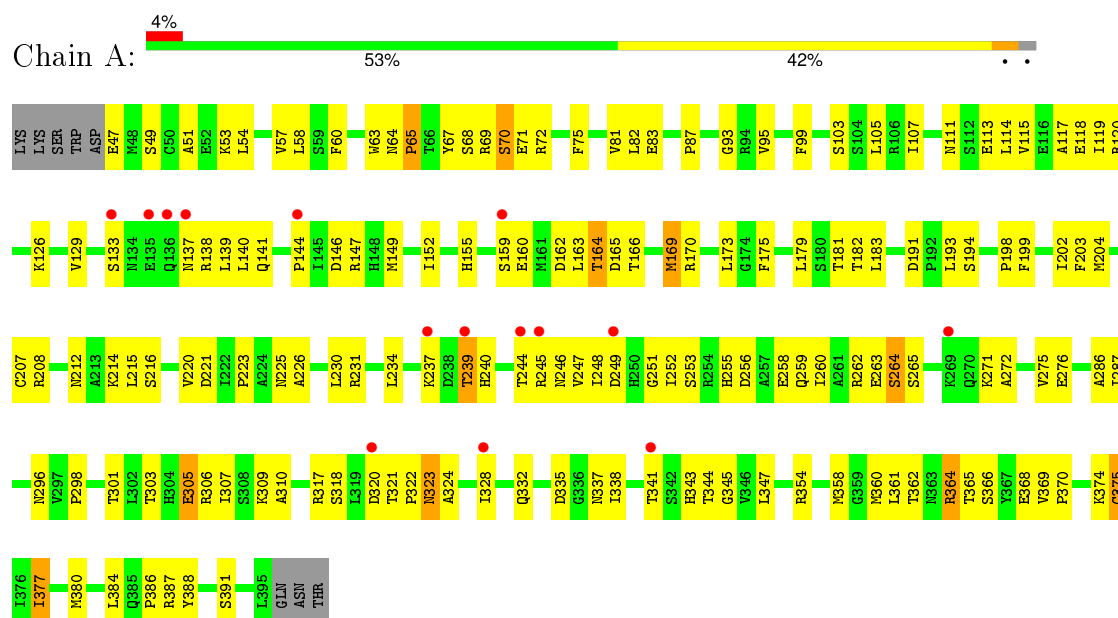
- Molecule 5 is water.

Mol	Chain	Residues	Atoms		ZeroOcc	AltConf
5	A	105	Total 105	O 105	0	0
5	B	29	Total 29	O 29	0	0

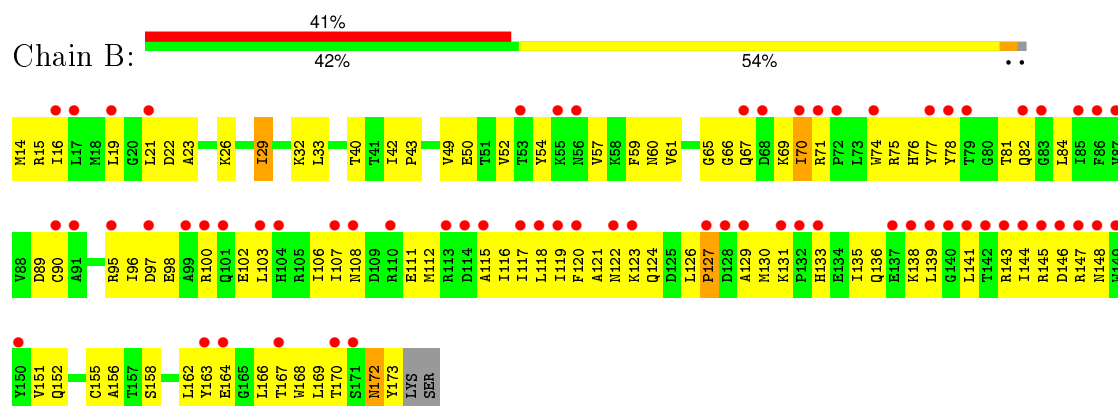
3 Residue-property plots

These plots are drawn for all protein, RNA and DNA chains in the entry. The first graphic for a chain summarises the proportions of errors displayed in the second graphic. The second graphic shows the sequence view annotated by issues in geometry and electron density. Residues are color-coded according to the number of geometric quality criteria for which they contain at least one outlier: green = 0, yellow = 1, orange = 2 and red = 3 or more. A red dot above a residue indicates a poor fit to the electron density ($RSRZ > 2$). Stretches of 2 or more consecutive residues without any outlier are shown as a green connector. Residues present in the sample, but not in the model, are shown in grey.

• Molecule 1: EspG



• Molecule 2: ADP-ribosylation factor 6



4 Data and refinement statistics

Property	Value	Source
Space group	P 43 21 2	Depositor
Cell constants a, b, c, α , β , γ	104.57Å 104.57Å 98.24Å 90.00° 90.00° 90.00°	Depositor
Resolution (Å)	29.00 – 2.50 29.00 – 2.50	Depositor EDS
% Data completeness (in resolution range)	97.4 (29.00-2.50) 97.1 (29.00-2.50)	Depositor EDS
R_{merge}	0.05	Depositor
R_{sym}	(Not available)	Depositor
$\langle I/\sigma(I) \rangle$ ¹	3.90 (at 2.51Å)	Xtriage
Refinement program	PHENIX (phenix.refine: 1.6.4_486)	Depositor
R, R_{free}	0.223 , 0.326 0.225 , 0.331	Depositor DCC
R_{free} test set	961 reflections (5.11%)	DCC
Wilson B-factor (Å ²)	32.8	Xtriage
Anisotropy	0.084	Xtriage
Bulk solvent k_{sol} (e/Å ³), B_{sol} (Å ²)	0.29 , 63.6	EDS
Estimated twinning fraction	No twinning to report.	Xtriage
L-test for twinning ²	$\langle L \rangle = 0.49$, $\langle L^2 \rangle = 0.33$	Xtriage
Outliers	0 of 34977 reflections	Xtriage
F_o, F_c correlation	0.92	EDS
Total number of atoms	4167	wwPDB-VP
Average B, all atoms (Å ²)	64.0	wwPDB-VP

Xtriage's analysis on translational NCS is as follows: *The largest off-origin peak in the Patterson function is 4.19% of the height of the origin peak. No significant pseudotranslation is detected.*

¹Intensities estimated from amplitudes.

²Theoretical values of $\langle |L| \rangle$, $\langle L^2 \rangle$ for acentric reflections are 0.5, 0.375 respectively for untwinned datasets, and 0.333, 0.2 for perfectly twinned datasets.

5 Model quality

5.1 Standard geometry

Bond lengths and bond angles in the following residue types are not validated in this section: GTP, MG

The Z score for a bond length (or angle) is the number of standard deviations the observed value is removed from the expected value. A bond length (or angle) with $|Z| > 5$ is considered an outlier worth inspection. RMSZ is the root-mean-square of all Z scores of the bond lengths (or angles).

Mol	Chain	Bond lengths		Bond angles	
		RMSZ	$\# Z > 5$	RMSZ	$\# Z > 5$
1	A	0.53	0/2742	0.66	0/3708
2	B	0.31	0/1320	0.50	0/1783
All	All	0.47	0/4062	0.62	0/5491

There are no bond length outliers.

There are no bond angle outliers.

There are no chirality outliers.

There are no planarity outliers.

5.2 Too-close contacts

In the following table, the Non-H and H(model) columns list the number of non-hydrogen atoms and hydrogen atoms in the chain respectively. The H(added) column lists the number of hydrogen atoms added and optimized by MolProbity. The Clashes column lists the number of clashes within the asymmetric unit, whereas Symm-Clashes lists symmetry related clashes.

Mol	Chain	Non-H	H(model)	H(added)	Clashes	Symm-Clashes
1	A	2703	0	2668	133	0
2	B	1297	0	1299	95	0
3	B	32	0	12	3	0
4	B	1	0	0	0	0
5	A	105	0	0	6	0
5	B	29	0	0	8	0
All	All	4167	0	3979	226	0

The all-atom clashscore is defined as the number of clashes found per 1000 atoms (including hydrogen atoms). The all-atom clashscore for this structure is 28.

All (226) close contacts within the same asymmetric unit are listed below, sorted by their clash

magnitude.

Atom-1	Atom-2	Interatomic distance (Å)	Clash overlap (Å)
1:A:347:LEU:HB3	1:A:358:MSE:HE2	1.31	1.09
1:A:345:GLY:HA3	1:A:360:MSE:HE2	1.35	1.09
1:A:310:ALA:HB1	1:A:358:MSE:HE3	1.49	0.93
1:A:173:LEU:HB2	1:A:360:MSE:HE1	1.54	0.90
2:B:136:GLN:HA	2:B:141:LEU:HD12	1.54	0.90
1:A:223:PRO:HD2	1:A:226:ALA:HB3	1.59	0.84
2:B:97:ASP:HA	2:B:100:ARG:HG2	1.58	0.83
1:A:147:ARG:HB2	1:A:149:MSE:HE2	1.62	0.82
2:B:78:TYR:HB3	2:B:111:GLU:HB3	1.64	0.79
2:B:82:GLN:HB2	5:B:201:HOH:O	1.82	0.79
2:B:116:ILE:HB	2:B:168:TRP:CH2	2.18	0.78
2:B:66:GLY:HA2	2:B:74:TRP:HZ2	1.46	0.78
2:B:14:MSE:HG3	5:B:201:HOH:O	1.83	0.78
1:A:305:GLU:CD	1:A:305:GLU:H	1.87	0.77
1:A:310:ALA:HB1	1:A:358:MSE:CE	2.15	0.76
2:B:119:ILE:HD13	2:B:141:LEU:HD13	1.67	0.75
1:A:72:ARG:CZ	1:A:159:SER:HB3	2.16	0.75
1:A:272:ALA:O	1:A:276:GLU:HG2	1.88	0.73
1:A:133:SER:HB3	1:A:140:LEU:HG	1.69	0.72
1:A:165:ASP:HA	1:A:321:THR:HG22	1.72	0.71
1:A:133:SER:CB	1:A:140:LEU:HG	2.21	0.70
2:B:166:LEU:HA	2:B:169:LEU:HD12	1.74	0.70
1:A:181:THR:HG22	1:A:391:SER:HB2	1.73	0.69
1:A:69:ARG:HG3	1:A:69:ARG:HH11	1.55	0.69
2:B:65:GLY:HA3	2:B:70:ILE:HD11	1.77	0.67
2:B:102:GLU:O	2:B:106:ILE:HG13	1.95	0.66
1:A:163:LEU:HD22	1:A:347:LEU:HD21	1.76	0.66
1:A:118:GLU:OE2	1:A:126:LYS:HE2	1.97	0.65
1:A:68:SER:OG	1:A:71:GLU:HG3	1.97	0.64
1:A:354:ARG:HD3	5:A:404:HOH:O	1.96	0.64
2:B:21:LEU:HD22	2:B:71:ARG:NH2	2.13	0.64
2:B:75:ARG:HA	2:B:78:TYR:CD2	2.33	0.63
1:A:214:LYS:HE2	1:A:221:ASP:OD1	2.00	0.62
2:B:78:TYR:HB3	2:B:111:GLU:CB	2.29	0.61
2:B:22:ASP:HB3	2:B:67:GLN:N	2.14	0.61
2:B:66:GLY:HA2	2:B:74:TRP:CZ2	2.32	0.61
1:A:202:ILE:HD13	1:A:380:MSE:HE1	1.83	0.61
1:A:310:ALA:CB	1:A:358:MSE:HE3	2.27	0.61
1:A:317:ARG:O	1:A:318:SER:HB2	2.00	0.60
1:A:332:GLN:HA	1:A:337:ASN:O	2.01	0.60
1:A:68:SER:O	1:A:70:SER:N	2.32	0.60

Continued on next page...

Continued from previous page...

Atom-1	Atom-2	Interatomic distance (Å)	Clash overlap (Å)
2:B:116:ILE:HG22	2:B:148:ASN:HD22	1.65	0.60
1:A:230:LEU:HD21	1:A:287:ILE:HD13	1.82	0.60
1:A:375:CYS:HB2	5:A:418:HOH:O	2.01	0.60
2:B:81:THR:HB	2:B:112:MSE:SE	2.52	0.59
2:B:15:ARG:HH11	2:B:81:THR:N	2.00	0.59
1:A:305:GLU:O	1:A:309:LYS:HG3	2.03	0.59
1:A:138:ARG:HD2	1:A:140:LEU:HB2	1.85	0.59
1:A:204:MSE:O	1:A:208:ARG:HG3	2.03	0.58
2:B:22:ASP:HB3	2:B:66:GLY:C	2.24	0.58
2:B:121:ALA:O	2:B:124:GLN:HG2	2.04	0.58
2:B:123:LYS:HE2	3:B:1230:GTP:C4	2.39	0.58
1:A:248:ILE:O	1:A:249:ASP:HB3	2.04	0.57
1:A:138:ARG:HG3	1:A:141:GLN:H	1.69	0.57
2:B:32:LYS:HG2	2:B:156:ALA:O	2.05	0.57
1:A:225:ASN:HB3	1:A:263:GLU:OE2	2.05	0.57
2:B:15:ARG:HA	2:B:60:ASN:HB3	1.87	0.57
1:A:223:PRO:HD2	1:A:226:ALA:CB	2.32	0.56
1:A:335:ASP:OD2	1:A:337:ASN:HB2	2.04	0.56
1:A:361:LEU:HD12	1:A:391:SER:O	2.06	0.56
1:A:191:ASP:O	1:A:194:SER:HB2	2.04	0.56
1:A:362:THR:HB	1:A:391:SER:HB3	1.87	0.56
2:B:130:MSE:HB3	2:B:135:ILE:HD11	1.87	0.56
2:B:76:HIS:C	2:B:77:TYR:HD1	2.09	0.56
1:A:138:ARG:CG	1:A:141:GLN:HG3	2.36	0.56
1:A:147:ARG:HB2	1:A:149:MSE:CE	2.34	0.56
1:A:82:LEU:O	1:A:83:GLU:HG2	2.05	0.56
1:A:347:LEU:CB	1:A:358:MSE:HE2	2.22	0.55
1:A:169:MSE:HE1	1:A:323:ASN:O	2.07	0.55
1:A:234:LEU:HA	1:A:247:VAL:HG21	1.89	0.55
2:B:97:ASP:HB2	2:B:100:ARG:HE	1.72	0.55
2:B:119:ILE:HD13	2:B:141:LEU:CD1	2.36	0.54
2:B:97:ASP:CA	2:B:100:ARG:HG2	2.34	0.54
1:A:341:THR:HG22	1:A:343:HIS:CE1	2.42	0.54
1:A:179:LEU:O	1:A:364:ARG:NH2	2.39	0.54
1:A:286:ALA:HB2	1:A:369:VAL:HG21	1.89	0.54
2:B:131:LYS:HB3	2:B:133:HIS:CD2	2.43	0.54
2:B:138:LYS:HG2	5:B:194:HOH:O	2.08	0.54
1:A:324:ALA:HB1	1:A:344:THR:HG23	1.88	0.54
2:B:97:ASP:HA	2:B:100:ARG:CG	2.34	0.54
1:A:103:SER:HA	1:A:120:ARG:O	2.07	0.54
1:A:87:PRO:HB3	1:A:93:GLY:HA2	1.89	0.54

Continued on next page...

Continued from previous page...

Atom-1	Atom-2	Interatomic distance (Å)	Clash overlap (Å)
1:A:175:PHE:O	1:A:179:LEU:HD13	2.07	0.53
2:B:52:VAL:HG23	2:B:59:PHE:HB2	1.90	0.53
1:A:147:ARG:CB	1:A:149:MSE:HE2	2.35	0.53
1:A:166:THR:OG1	1:A:322:PRO:HD3	2.08	0.53
2:B:95:ARG:HD2	2:B:98:GLU:OE1	2.09	0.53
1:A:230:LEU:HA	1:A:260:ILE:HD11	1.91	0.52
1:A:95:VAL:HG22	1:A:107:ILE:HB	1.92	0.52
1:A:244:THR:HG22	1:A:246:ASN:H	1.74	0.52
1:A:341:THR:CG2	1:A:364:ARG:HD3	2.39	0.52
1:A:49:SER:HB2	1:A:103:SER:HB3	1.90	0.52
2:B:103:LEU:HD21	2:B:141:LEU:HD21	1.92	0.52
2:B:21:LEU:HD21	2:B:102:GLU:HG3	1.91	0.52
1:A:271:LYS:O	1:A:275:VAL:HG23	2.10	0.52
1:A:155:HIS:CG	1:A:179:LEU:HD23	2.45	0.51
1:A:296:ASN:OD1	1:A:344:THR:HB	2.11	0.51
2:B:97:ASP:HB2	2:B:100:ARG:NE	2.26	0.51
2:B:123:LYS:HG2	3:B:1230:GTP:C6	2.46	0.51
2:B:21:LEU:HD22	2:B:71:ARG:CZ	2.41	0.51
2:B:84:LEU:HD22	2:B:107:ILE:HG23	1.92	0.51
2:B:120:PHE:CZ	2:B:162:LEU:HA	2.45	0.51
1:A:152:ILE:HD13	2:B:42:ILE:HD11	1.92	0.51
1:A:204:MSE:HB2	1:A:240:HIS:CE1	2.46	0.50
2:B:33:LEU:HD23	2:B:163:TYR:CZ	2.46	0.50
1:A:67:TYR:CD1	1:A:75:PHE:HE2	2.30	0.50
1:A:306:ARG:NH2	2:B:40:THR:OG1	2.43	0.50
2:B:117:ILE:H	2:B:168:TRP:HH2	1.58	0.50
1:A:220:VAL:HG13	1:A:265:SER:O	2.11	0.50
2:B:139:LEU:HD12	2:B:141:LEU:HD11	1.93	0.50
2:B:164:GLU:O	2:B:167:THR:HB	2.12	0.50
2:B:14:MSE:HE3	2:B:59:PHE:CE2	2.46	0.49
1:A:375:CYS:CB	5:A:418:HOH:O	2.58	0.49
1:A:345:GLY:CA	1:A:360:MSE:HE2	2.24	0.49
1:A:202:ILE:HG23	1:A:203:PHE:N	2.28	0.49
1:A:252:ILE:HG22	1:A:253:SER:H	1.78	0.49
2:B:96:ILE:CD1	2:B:130:MSE:HE1	2.43	0.49
2:B:42:ILE:CG2	2:B:43:PRO:HD2	2.43	0.49
1:A:193:LEU:HD21	1:A:199:PHE:CE2	2.48	0.48
2:B:54:TYR:HB3	2:B:59:PHE:HE1	1.78	0.48
2:B:14:MSE:N	5:B:191:HOH:O	2.47	0.48
1:A:159:SER:OG	1:A:160:GLU:HG3	2.13	0.48
2:B:89:ASP:OD1	2:B:123:LYS:HD2	2.14	0.48

Continued on next page...

Continued from previous page...

Atom-1	Atom-2	Interatomic distance (Å)	Clash overlap (Å)
1:A:138:ARG:HG2	1:A:141:GLN:HG3	1.93	0.48
1:A:133:SER:HB2	1:A:139:LEU:HB3	1.95	0.48
1:A:115:VAL:HG11	1:A:139:LEU:HD21	1.95	0.48
1:A:72:ARG:NE	1:A:159:SER:HB3	2.28	0.48
1:A:162:ASP:HB3	1:A:164:THR:HG22	1.95	0.48
2:B:52:VAL:CG2	2:B:59:PHE:HB2	2.44	0.48
1:A:260:ILE:O	1:A:264:SER:OG	2.30	0.48
1:A:95:VAL:HG11	1:A:144:PRO:HD2	1.96	0.48
1:A:69:ARG:HG3	1:A:69:ARG:NH1	2.26	0.48
1:A:99:PHE:O	5:A:476:HOH:O	2.20	0.48
2:B:75:ARG:C	2:B:77:TYR:H	2.18	0.47
1:A:341:THR:HG21	1:A:364:ARG:HD3	1.96	0.47
2:B:15:ARG:NH1	2:B:81:THR:N	2.62	0.47
1:A:246:ASN:O	1:A:248:ILE:O	2.33	0.47
1:A:252:ILE:HG22	1:A:253:SER:N	2.30	0.47
1:A:113:GLU:HB3	1:A:140:LEU:HD11	1.96	0.47
2:B:16:ILE:HB	2:B:61:VAL:HG22	1.97	0.47
2:B:131:LYS:O	2:B:135:ILE:HG12	2.14	0.47
1:A:239:THR:OG1	1:A:240:HIS:N	2.48	0.47
2:B:29:ILE:HG23	2:B:33:LEU:HD12	1.96	0.47
1:A:259:GLN:OE1	1:A:259:GLN:HA	2.15	0.47
2:B:147:ARG:HD2	5:B:187:HOH:O	2.14	0.46
1:A:63:TRP:HZ2	1:A:179:LEU:HD21	1.81	0.46
1:A:245:ARG:H	1:A:245:ARG:HG3	1.56	0.46
1:A:231:ARG:HE	1:A:237:LYS:HG3	1.80	0.46
1:A:247:VAL:HA	1:A:251:GLY:O	2.15	0.45
1:A:343:HIS:NE2	1:A:364:ARG:NH1	2.64	0.45
2:B:145:ARG:O	2:B:146:ASP:HB2	2.16	0.45
2:B:49:VAL:O	2:B:50:GLU:HG2	2.15	0.45
1:A:386:PRO:HB2	1:A:388:TYR:CZ	2.51	0.45
2:B:19:LEU:HD12	2:B:84:LEU:CD1	2.46	0.45
1:A:54:LEU:O	1:A:58:LEU:HG	2.16	0.45
1:A:317:ARG:O	1:A:318:SER:CB	2.62	0.45
1:A:149:MSE:HB2	1:A:182:THR:HG23	1.98	0.45
1:A:368:GLU:O	1:A:370:PRO:HD3	2.17	0.45
2:B:97:ASP:O	2:B:100:ARG:HG2	2.17	0.45
1:A:63:TRP:O	1:A:64:ASN:C	2.55	0.45
1:A:163:LEU:HD22	1:A:347:LEU:CD2	2.44	0.45
2:B:23:ALA:HA	3:B:1230:GTP:H5'	1.98	0.44
1:A:51:ALA:HB3	1:A:103:SER:HB2	1.99	0.44
1:A:166:THR:HG23	1:A:322:PRO:HG3	1.99	0.44

Continued on next page...

Continued from previous page...

Atom-1	Atom-2	Interatomic distance (Å)	Clash overlap (Å)
2:B:155:CYS:HB3	2:B:158:SER:OG	2.18	0.44
1:A:249:ASP:HA	1:A:374:LYS:HE2	2.00	0.44
1:A:170:ARG:NH2	1:A:212:ASN:OD1	2.51	0.44
1:A:117:ALA:HB3	1:A:129:VAL:HB	1.99	0.44
1:A:67:TYR:HB3	1:A:71:GLU:HB2	1.99	0.44
1:A:320:ASP:OD1	1:A:320:ASP:O	2.36	0.44
1:A:138:ARG:HG3	1:A:141:GLN:HG3	2.00	0.44
2:B:49:VAL:C	2:B:50:GLU:HG2	2.38	0.44
1:A:337:ASN:HA	5:A:413:HOH:O	2.17	0.44
1:A:384:LEU:C	1:A:386:PRO:HD3	2.39	0.43
2:B:75:ARG:HA	2:B:78:TYR:CE2	2.53	0.43
2:B:126:LEU:O	2:B:129:ALA:HB2	2.18	0.43
2:B:116:ILE:HB	2:B:168:TRP:CZ3	2.53	0.43
1:A:138:ARG:CG	1:A:141:GLN:CG	2.95	0.43
2:B:127:PRO:C	2:B:129:ALA:H	2.22	0.43
1:A:298:PRO:O	1:A:301:THR:HB	2.17	0.43
2:B:14:MSE:CE	2:B:57:VAL:HG11	2.48	0.43
2:B:122:ASN:O	2:B:123:LYS:HB2	2.18	0.43
2:B:74:TRP:O	2:B:77:TYR:HB2	2.19	0.43
1:A:138:ARG:HG2	1:A:141:GLN:CG	2.49	0.43
1:A:105:LEU:HD13	1:A:119:ILE:HG12	2.01	0.43
2:B:78:TYR:CB	2:B:111:GLU:CB	2.97	0.43
1:A:305:GLU:CD	1:A:305:GLU:N	2.62	0.43
1:A:365:THR:HA	1:A:387:ARG:O	2.19	0.43
2:B:138:LYS:CG	5:B:194:HOH:O	2.66	0.42
1:A:258:GLU:O	1:A:262:ARG:HB2	2.19	0.42
2:B:115:ALA:O	5:B:187:HOH:O	2.21	0.42
1:A:64:ASN:HA	1:A:65:PRO:HD3	1.73	0.42
1:A:215:LEU:CD1	1:A:328:ILE:HB	2.50	0.42
1:A:225:ASN:CB	1:A:263:GLU:OE2	2.67	0.42
2:B:172:ASN:HD22	2:B:172:ASN:HA	1.63	0.42
2:B:97:ASP:CB	2:B:100:ARG:HE	2.32	0.42
1:A:198:PRO:O	1:A:199:PHE:HB2	2.20	0.42
2:B:26:LYS:HE2	5:B:197:HOH:O	2.18	0.42
2:B:107:ILE:HA	2:B:112:MSE:HB2	2.02	0.42
2:B:95:ARG:HD2	2:B:98:GLU:CD	2.40	0.42
1:A:252:ILE:CG2	1:A:256:ASP:HB2	2.49	0.42
1:A:47:GLU:N	5:A:488:HOH:O	2.52	0.42
2:B:42:ILE:HG23	2:B:43:PRO:HD2	2.02	0.41
2:B:143:ARG:O	2:B:144:ILE:HD13	2.20	0.41
1:A:146:ASP:HB3	1:A:183:LEU:HG	2.02	0.41

Continued on next page...

Continued from previous page...

Atom-1	Atom-2	Interatomic distance (Å)	Clash overlap (Å)
1:A:165:ASP:HA	1:A:321:THR:CG2	2.47	0.41
2:B:90:CYS:O	2:B:130:MSE:HB2	2.21	0.41
2:B:96:ILE:HD11	2:B:130:MSE:HE1	2.02	0.41
2:B:119:ILE:HB	2:B:151:VAL:HA	2.01	0.41
2:B:78:TYR:CB	2:B:111:GLU:HB3	2.42	0.41
2:B:107:ILE:HB	2:B:147:ARG:NH2	2.36	0.41
1:A:303:THR:O	1:A:307:ILE:HG12	2.20	0.41
1:A:60:PHE:HD2	1:A:67:TYR:OH	2.02	0.41
2:B:138:LYS:HA	2:B:138:LYS:HD2	1.94	0.41
1:A:138:ARG:HA	1:A:138:ARG:HD3	1.75	0.41
1:A:133:SER:OG	1:A:138:ARG:HD3	2.21	0.41
2:B:107:ILE:HD12	2:B:108:ASN:N	2.36	0.41
2:B:95:ARG:HB3	2:B:98:GLU:HB3	2.01	0.41
1:A:199:PHE:HB2	1:A:377:ILE:HD12	2.02	0.40
1:A:53:LYS:O	1:A:57:VAL:HG23	2.21	0.40
1:A:114:LEU:HD23	1:A:114:LEU:C	2.42	0.40
2:B:116:ILE:HD13	2:B:173:TYR:HB2	2.02	0.40
1:A:199:PHE:CD1	1:A:202:ILE:HD12	2.56	0.40
1:A:332:GLN:HG3	1:A:338:ILE:HG13	2.03	0.40
2:B:118:LEU:HD11	2:B:152:GLN:HB2	2.03	0.40
2:B:96:ILE:HD13	2:B:130:MSE:HE1	2.03	0.40

There are no symmetry-related clashes.

5.3 Torsion angles [i](#)

5.3.1 Protein backbone [i](#)

In the following table, the Percentiles column shows the percent Ramachandran outliers of the chain as a percentile score with respect to all X-ray entries followed by that with respect to entries of similar resolution.

The Analysed column shows the number of residues for which the backbone conformation was analysed, and the total number of residues.

Mol	Chain	Analysed	Favoured	Allowed	Outliers	Percentiles	
1	A	347/357 (97%)	304 (88%)	37 (11%)	6 (2%)	11	19
2	B	158/162 (98%)	134 (85%)	20 (13%)	4 (2%)	7	10
All	All	505/519 (97%)	438 (87%)	57 (11%)	10 (2%)	9	15

All (10) Ramachandran outliers are listed below:

Mol	Chain	Res	Type
1	A	239	THR
1	A	377	ILE
2	B	69	LYS
1	A	323	ASN
2	B	170	THR
1	A	65	PRO
1	A	255	HIS
1	A	375	CYS
2	B	70	ILE
2	B	127	PRO

5.3.2 Protein sidechains ⓘ

In the following table, the Percentiles column shows the percent sidechain outliers of the chain as a percentile score with respect to all X-ray entries followed by that with respect to entries of similar resolution.

The Analysed column shows the number of residues for which the sidechain conformation was analysed, and the total number of residues.

Mol	Chain	Analysed	Rotameric	Outliers	Percentiles	
1	A	309/308 (100%)	297 (96%)	12 (4%)	39	66
2	B	140/138 (101%)	138 (99%)	2 (1%)	74	91
All	All	449/446 (101%)	435 (97%)	14 (3%)	47	75

All (14) residues with a non-rotameric sidechain are listed below:

Mol	Chain	Res	Type
1	A	70	SER
1	A	81	VAL
1	A	111	ASN
1	A	137	ASN
1	A	164	THR
1	A	169	MSE
1	A	207	CYS
1	A	216	SER
1	A	264	SER
1	A	305	GLU
1	A	364	ARG
1	A	366	SER
2	B	29	ILE

Continued on next page...

Continued from previous page...

Mol	Chain	Res	Type
2	B	172	ASN

Some sidechains can be flipped to improve hydrogen bonding and reduce clashes. All (9) such sidechains are listed below:

Mol	Chain	Res	Type
1	A	137	ASN
1	A	225	ASN
1	A	246	ASN
1	A	323	ASN
2	B	67	GLN
2	B	104	HIS
2	B	124	GLN
2	B	148	ASN
2	B	172	ASN

5.3.3 RNA [i](#)

There are no RNA molecules in this entry.

5.4 Non-standard residues in protein, DNA, RNA chains [i](#)

There are no non-standard protein/DNA/RNA residues in this entry.

5.5 Carbohydrates [i](#)

There are no carbohydrates in this entry.

5.6 Ligand geometry [i](#)

Of 2 ligands modelled in this entry, 1 is monoatomic - leaving 1 for Mogul analysis.

In the following table, the Counts columns list the number of bonds (or angles) for which Mogul statistics could be retrieved, the number of bonds (or angles) that are observed in the model and the number of bonds (or angles) that are defined in the chemical component dictionary. The Link column lists molecule types, if any, to which the group is linked. The Z score for a bond length (or angle) is the number of standard deviations the observed value is removed from the expected value. A bond length (or angle) with $|Z| > 2$ is considered an outlier worth inspection. RMSZ is the root-mean-square of all Z scores of the bond lengths (or angles).

Mol	Type	Chain	Res	Link	Bond lengths			Bond angles		
					Counts	RMSZ	# Z > 2	Counts	RMSZ	# Z > 2
3	GTP	B	1230	4	25,34,34	0.92	1 (4%)	34,54,54	1.93	9 (26%)

In the following table, the Chirals column lists the number of chiral outliers, the number of chiral centers analysed, the number of these observed in the model and the number defined in the chemical component dictionary. Similar counts are reported in the Torsion and Rings columns. '-' means no outliers of that kind were identified.

Mol	Type	Chain	Res	Link	Chirals	Torsions	Rings
3	GTP	B	1230	4	-	0/18/38/38	0/3/3/3

All (1) bond length outliers are listed below:

Mol	Chain	Res	Type	Atoms	Z	Observed(Å)	Ideal(Å)
3	B	1230	GTP	C6-N1	2.93	1.38	1.33

All (9) bond angle outliers are listed below:

Mol	Chain	Res	Type	Atoms	Z	Observed(°)	Ideal(°)
3	B	1230	GTP	N3-C2-N1	-4.80	120.14	127.44
3	B	1230	GTP	PA-O3A-PB	-4.20	120.94	132.73
3	B	1230	GTP	C2'-C1'-N9	-3.94	108.27	114.29
3	B	1230	GTP	C5-C6-N1	-2.91	119.61	123.59
3	B	1230	GTP	C4-C5-N7	-2.59	107.10	109.48
3	B	1230	GTP	PB-O3B-PG	-2.52	124.20	132.67
3	B	1230	GTP	O2A-PA-O5'	2.02	118.63	108.46
3	B	1230	GTP	O4'-C1'-N9	2.37	113.07	108.10
3	B	1230	GTP	C6-N1-C2	2.90	119.96	115.94

There are no chirality outliers.

There are no torsion outliers.

There are no ring outliers.

1 monomer is involved in 3 short contacts:

Mol	Chain	Res	Type	Clashes	Symm-Clashes
3	B	1230	GTP	3	0

5.7 Other polymers

There are no such residues in this entry.

5.8 Polymer linkage issues ⓘ

There are no chain breaks in this entry.

6 Fit of model and data

6.1 Protein, DNA and RNA chains

In the following table, the column labelled ‘#RSRZ> 2’ contains the number (and percentage) of RSRZ outliers, followed by percent RSRZ outliers for the chain as percentile scores relative to all X-ray entries and entries of similar resolution. The OWAB column contains the minimum, median, 95th percentile and maximum values of the occupancy-weighted average B-factor per residue. The column labelled ‘Q< 0.9’ lists the number of (and percentage) of residues with an average occupancy less than 0.9.

Mol	Chain	Analysed	<RSRZ>	#RSRZ>2	OWAB(Å ²)	Q<0.9
1	A	340/357 (95%)	0.26	15 (4%) 38 43	16, 40, 86, 140	0
2	B	156/162 (96%)	1.98	67 (42%) 0 0	33, 97, 151, 177	0
All	All	496/519 (95%)	0.80	82 (16%) 2 2	16, 53, 136, 177	0

All (82) RSRZ outliers are listed below:

Mol	Chain	Res	Type	RSRZ
2	B	133	HIS	9.5
2	B	71	ARG	7.4
2	B	145	ARG	6.5
2	B	110	ARG	6.4
2	B	77	TYR	6.4
1	A	135	GLU	6.3
2	B	87	VAL	5.2
2	B	68	ASP	5.2
2	B	70	ILE	4.9
2	B	85	ILE	4.8
2	B	56	ASN	4.7
2	B	103	LEU	4.5
2	B	131	LYS	4.5
2	B	143	ARG	4.5
2	B	142	THR	4.4
2	B	108	ASN	4.3
2	B	138	LYS	4.3
2	B	107	ILE	4.2
2	B	72	PRO	4.2
2	B	91	ALA	4.2
2	B	17	LEU	4.2
2	B	97	ASP	4.2
2	B	74	TRP	4.0
2	B	19	LEU	3.8

Continued on next page...

Continued from previous page...

Mol	Chain	Res	Type	RSRZ
2	B	82	GLN	3.7
1	A	237	LYS	3.6
2	B	55	LYS	3.6
2	B	129	ALA	3.5
2	B	120	PHE	3.5
2	B	147	ARG	3.5
2	B	144	ILE	3.5
2	B	148	ASN	3.4
2	B	163	TYR	3.4
1	A	159	SER	3.4
2	B	117	ILE	3.4
2	B	104	HIS	3.4
2	B	171	SER	3.4
2	B	140	GLY	3.3
2	B	100	ARG	3.3
1	A	245	ARG	3.2
2	B	146	ASP	3.2
2	B	119	ILE	3.1
2	B	170	THR	3.1
2	B	118	LEU	2.9
2	B	67	GLN	2.8
2	B	141	LEU	2.8
2	B	150	TYR	2.8
2	B	139	LEU	2.8
1	A	239	THR	2.8
2	B	101	GLN	2.7
2	B	53	THR	2.7
2	B	132	PRO	2.7
2	B	99	ALA	2.7
2	B	83	GLY	2.6
2	B	127	PRO	2.6
1	A	249	ASP	2.5
2	B	113	ARG	2.4
2	B	90	CYS	2.4
2	B	21	LEU	2.4
2	B	128	ASP	2.4
1	A	328	ILE	2.4
1	A	137	ASN	2.3
1	A	133	SER	2.3
2	B	149	TRP	2.3
1	A	341	THR	2.2
2	B	79	THR	2.2

Continued on next page...

Continued from previous page...

Mol	Chain	Res	Type	RSRZ
2	B	123	LYS	2.2
1	A	320	ASP	2.2
2	B	164	GLU	2.2
2	B	16	ILE	2.2
1	A	136	GLN	2.1
1	A	269	LYS	2.1
1	A	144	PRO	2.1
2	B	78	TYR	2.1
2	B	122	ASN	2.1
2	B	114	ASP	2.1
2	B	167	THR	2.1
2	B	115	ALA	2.1
2	B	95	ARG	2.1
1	A	244	THR	2.0
2	B	86	PHE	2.0
2	B	137	GLU	2.0

6.2 Non-standard residues in protein, DNA, RNA chains [i](#)

There are no non-standard protein/DNA/RNA residues in this entry.

6.3 Carbohydrates [i](#)

There are no carbohydrates in this entry.

6.4 Ligands [i](#)

In the following table, the Atoms column lists the number of modelled atoms in the group and the number defined in the chemical component dictionary. LLDF column lists the quality of electron density of the group with respect to its neighbouring residues in protein, DNA or RNA chains. The B-factors column lists the minimum, median, 95th percentile and maximum values of B factors of atoms in the group. The column labelled 'Q< 0.9' lists the number of atoms with occupancy less than 0.9.

Mol	Type	Chain	Res	Atoms	RSCC	RSR	LLDF	B-factors(Å ²)	Q<0.9
3	GTP	B	1230	32/32	0.95	0.14	-1.12	28,50,70,73	0
4	MG	B	1231	1/1	0.94	0.06	-	45,45,45,45	0

6.5 Other polymers

There are no such residues in this entry.