



Full wwPDB X-ray Structure Validation Report ⓘ

Feb 1, 2016 – 07:35 PM GMT

PDB ID : 4PC3
Title : Elongation factor Tu:Ts complex with partially bound GDP
Authors : Thirup, S.S.
Deposited on : 2014-04-14
Resolution : 1.83 Å(reported)

This is a Full wwPDB X-ray Structure Validation Report for a publicly released PDB entry.
We welcome your comments at validation@mail.wwpdb.org
A user guide is available at
<http://wwpdb.org/validation/2016/XrayValidationReportHelp>
with specific help available everywhere you see the ⓘ symbol.

The following versions of software and data (see [references ⓘ](#)) were used in the production of this report:

MolProbity : 4.02b-467
Mogul : 1.7 (RC4), CSD as536be (2015)
Xtriage (Phenix) : 1.9-1692
EDS : rb-20026688
Percentile statistics : 20151230.v01 (using entries in the PDB archive December 30th 2015)
Refmac : 5.8.0135
CCP4 : 6.5.0
Ideal geometry (proteins) : Engh & Huber (2001)
Ideal geometry (DNA, RNA) : Parkinson et al. (1996)
Validation Pipeline (wwPDB-VP) : trunk26865

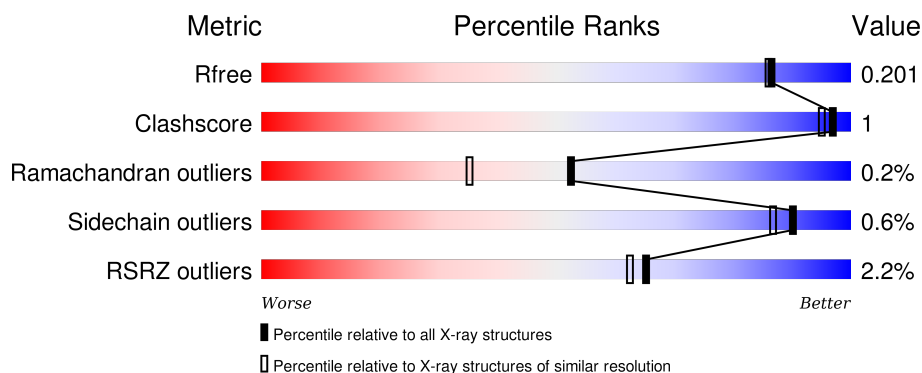
1 Overall quality at a glance

The following experimental techniques were used to determine the structure:

X-RAY DIFFRACTION

The reported resolution of this entry is 1.83 Å.

Percentile scores (ranging between 0-100) for global validation metrics of the entry are shown in the following graphic. The table shows the number of entries on which the scores are based.



Metric	Whole archive (#Entries)	Similar resolution (#Entries, resolution range(Å))
R_{free}	91344	2634 (1.86-1.82)
Clashscore	102246	2862 (1.86-1.82)
Ramachandran outliers	100387	2831 (1.86-1.82)
Sidechain outliers	100360	2832 (1.86-1.82)
RSRZ outliers	91569	2639 (1.86-1.82)

The table below summarises the geometric issues observed across the polymeric chains and their fit to the electron density. The red, orange, yellow and green segments on the lower bar indicate the fraction of residues that contain outliers for ≥ 3 , 2, 1 and 0 types of geometric quality criteria. A grey segment represents the fraction of residues that are not modelled. The numeric value for each fraction is indicated below the corresponding segment, with a dot representing fractions $\leq 5\%$. The upper red bar (where present) indicates the fraction of residues that have poor fit to the electron density. The numeric value is given above the bar.

Mol	Chain	Length	Quality of chain
1	A	394	<div> <div>3%</div> <div>89%</div> <div>8%</div> </div>
1	B	394	<div> <div>4%</div> <div>91%</div> <div>6%</div> </div>
2	C	282	<div> <div>97%</div> <div>..</div> </div>
2	D	282	<div> <div>%</div> <div>96%</div> <div>..</div> </div>

The following table lists non-polymeric compounds, carbohydrate monomers and non-standard

residues in protein, DNA, RNA chains that are outliers for geometric or electron-density-fit criteria:

Mol	Type	Chain	Res	Chirality	Geometry	Clashes	Electron density
3	GDP	A	401[A]	-	-	-	X
3	GDP	A	401[B]	-	-	-	X
4	GOL	B	402	-	-	-	X
4	GOL	C	301	-	-	-	X

2 Entry composition [i](#)

There are 5 unique types of molecules in this entry. The entry contains 21513 atoms, of which 10220 are hydrogens and 0 are deuteriums.

In the tables below, the ZeroOcc column contains the number of atoms modelled with zero occupancy, the AltConf column contains the number of residues with at least one atom in alternate conformation and the Trace column contains the number of residues modelled with at most 2 atoms.

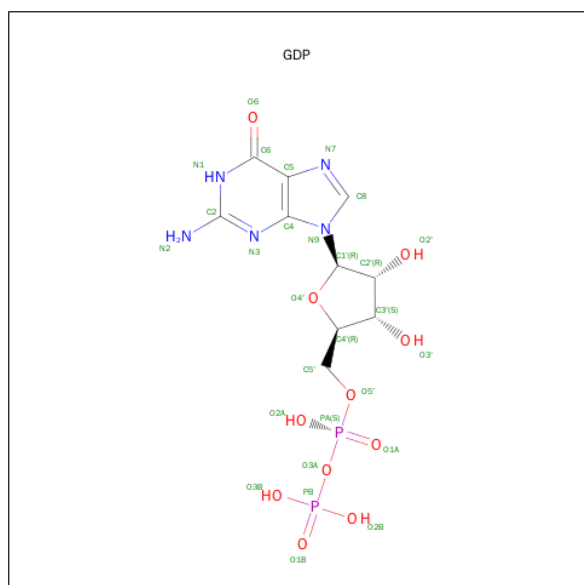
- Molecule 1 is a protein called Elongation factor Tu 1.

Mol	Chain	Residues	Atoms						ZeroOcc	AltConf	Trace
1	A	363	Total	C	H	N	O	S	0	13	0
			5760	1817	2891	492	544	16			
1	B	372	Total	C	H	N	O	S	0	8	0
			5836	1836	2935	498	550	17			

- Molecule 2 is a protein called Elongation factor Ts.

Mol	Chain	Residues	Atoms						ZeroOcc	AltConf	Trace
2	C	279	Total	C	H	N	O	S	0	1	0
			4265	1325	2155	360	414	11			
2	D	279	Total	C	H	N	O	S	0	10	0
			4340	1346	2199	364	418	13			

- Molecule 3 is GUANOSINE-5'-DIPHOSPHATE (three-letter code: GDP) (formula: $C_{10}H_{15}N_5O_{11}P_2$).



Mol	Chain	Residues	Atoms				ZeroOcc	AltConf
3	A	1	Total	C	N	O	P	
			56	20	10	22	4	
3	B	1	Total	C	N	O	P	
			28	10	5	11	2	

- Molecule 4 is GLYCEROL (three-letter code: GOL) (formula: $C_3H_8O_3$).



Mol	Chain	Residues	Atoms				ZeroOcc	AltConf
4	C	1	Total	C	H	O		
			14	3	8	3		
4	C	1	Total	C	H	O		
			14	3	8	3		
4	B	1	Total	C	H	O		
			14	3	8	3		
4	D	1	Total	C	H	O		
			14	3	8	3		
4	D	1	Total	C	H	O		
			14	3	8	3		

- Molecule 5 is water.

Mol	Chain	Residues	Atoms		ZeroOcc	AltConf
5	A	248	Total	O		
			248	248		
5	C	381	Total	O		
			381	381		
5	B	215	Total	O		
			215	215		

Continued on next page...

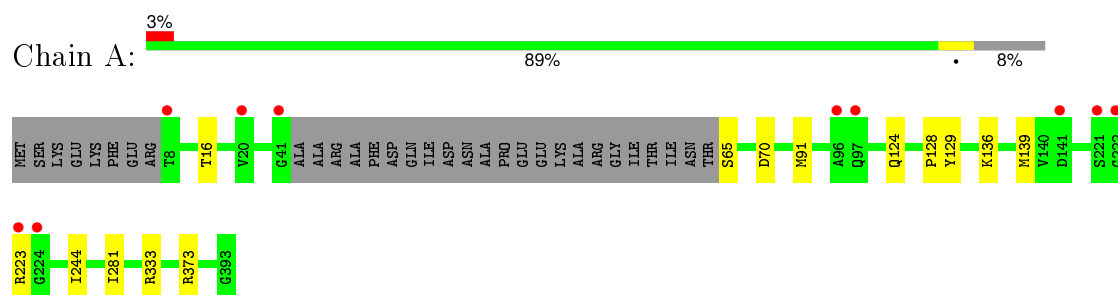
Continued from previous page...

Mol	Chain	Residues	Atoms		ZeroOcc	AltConf
5	D	314	Total	O	0	0
			314	314		

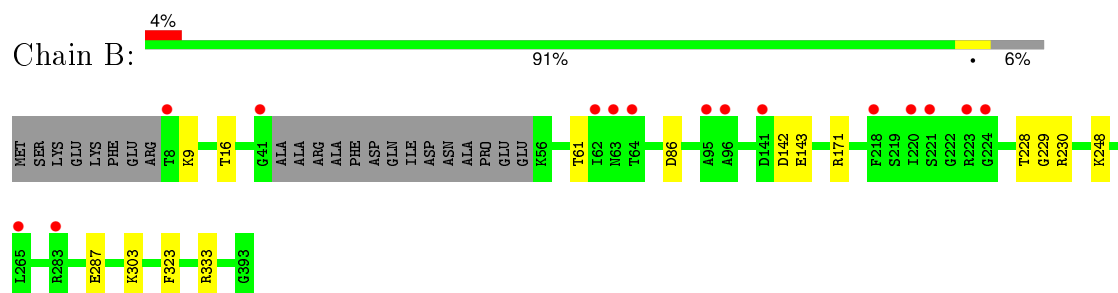
3 Residue-property plots [i](#)

These plots are drawn for all protein, RNA and DNA chains in the entry. The first graphic for a chain summarises the proportions of errors displayed in the second graphic. The second graphic shows the sequence view annotated by issues in geometry and electron density. Residues are color-coded according to the number of geometric quality criteria for which they contain at least one outlier: green = 0, yellow = 1, orange = 2 and red = 3 or more. A red dot above a residue indicates a poor fit to the electron density ($RSRZ > 2$). Stretches of 2 or more consecutive residues without any outlier are shown as a green connector. Residues present in the sample, but not in the model, are shown in grey.

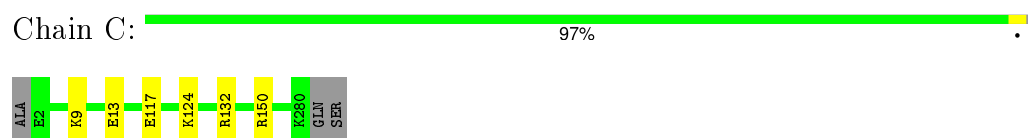
- Molecule 1: Elongation factor Tu 1



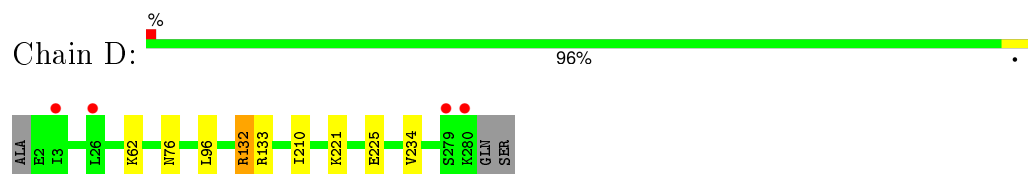
- Molecule 1: Elongation factor Tu 1



- Molecule 2: Elongation factor Ts



- Molecule 2: Elongation factor Ts



4 Data and refinement statistics

Property	Value	Source
Space group	P 21 21 21	Depositor
Cell constants a, b, c, α , β , γ	74.00Å 108.92Å 194.77Å 90.00° 90.00° 90.00°	Depositor
Resolution (Å)	58.92 – 1.83 95.06 – 1.83	Depositor EDS
% Data completeness (in resolution range)	97.4 (58.92-1.83) 97.4 (95.06-1.83)	Depositor EDS
R_{merge}	0.05	Depositor
R_{sym}	(Not available)	Depositor
$\langle I/\sigma(I) \rangle$ ¹	1.85 (at 1.83Å)	Xtriage
Refinement program	PHENIX (phenix.refine: dev_1702)	Depositor
R, R_{free}	0.159 , 0.199 0.160 , 0.201	Depositor DCC
R_{free} test set	6101 reflections (4.51%)	DCC
Wilson B-factor (Å ²)	28.9	Xtriage
Anisotropy	0.049	Xtriage
Bulk solvent k_{sol} (e/Å ³), B_{sol} (Å ²)	0.38 , 52.0	EDS
Estimated twinning fraction	No twinning to report.	Xtriage
L-test for twinning ²	$\langle L \rangle = 0.47$, $\langle L^2 \rangle = 0.30$	Xtriage
Outliers	0 of 135301 reflections	Xtriage
F_o, F_c correlation	0.97	EDS
Total number of atoms	21513	wwPDB-VP
Average B, all atoms (Å ²)	50.0	wwPDB-VP

Xtriage's analysis on translational NCS is as follows: *The largest off-origin peak in the Patterson function is 4.00% of the height of the origin peak. No significant pseudotranslation is detected.*

¹Intensities estimated from amplitudes.

²Theoretical values of $\langle |L| \rangle$, $\langle L^2 \rangle$ for acentric reflections are 0.5, 0.375 respectively for untwinned datasets, and 0.333, 0.2 for perfectly twinned datasets.

5 Model quality [i](#)

5.1 Standard geometry [i](#)

Bond lengths and bond angles in the following residue types are not validated in this section: GDP, GOL

The Z score for a bond length (or angle) is the number of standard deviations the observed value is removed from the expected value. A bond length (or angle) with $|Z| > 5$ is considered an outlier worth inspection. RMSZ is the root-mean-square of all Z scores of the bond lengths (or angles).

Mol	Chain	Bond lengths		Bond angles	
		RMSZ	# Z >5	RMSZ	# Z >5
1	A	0.53	0/2950	0.64	0/3992
1	B	0.49	0/2976	0.62	0/4026
2	C	0.65	0/2131	0.71	0/2860
2	D	0.61	0/2212	0.68	2/2966 (0.1%)
All	All	0.56	0/10269	0.66	2/13844 (0.0%)

There are no bond length outliers.

All (2) bond angle outliers are listed below:

Mol	Chain	Res	Type	Atoms	Z	Observed(°)	Ideal(°)
2	D	132	ARG	NE-CZ-NH2	-6.09	117.26	120.30
2	D	133	ARG	NE-CZ-NH2	-5.15	117.72	120.30

There are no chirality outliers.

There are no planarity outliers.

5.2 Too-close contacts [i](#)

In the following table, the Non-H and H(model) columns list the number of non-hydrogen atoms and hydrogen atoms in the chain respectively. The H(added) column lists the number of hydrogen atoms added and optimized by MolProbity. The Clashes column lists the number of clashes within the asymmetric unit, whereas Symm-Clashes lists symmetry related clashes.

Mol	Chain	Non-H	H(model)	H(added)	Clashes	Symm-Clashes
1	A	2869	2891	2862	7	0
1	B	2901	2935	2910	9	0
2	C	2110	2155	2154	5	0
2	D	2141	2199	2143	7	0
3	A	56	0	24	3	0

Continued on next page...

Continued from previous page...

Mol	Chain	Non-H	H(model)	H(added)	Clashes	Symm-Clashes
3	B	28	0	12	0	0
4	B	6	8	8	0	0
4	C	12	16	16	0	0
4	D	12	16	16	0	0
5	A	248	0	0	2	0
5	B	215	0	0	4	0
5	C	381	0	0	3	2
5	D	314	0	0	0	1
All	All	11293	10220	10145	26	2

The all-atom clashscore is defined as the number of clashes found per 1000 atoms (including hydrogen atoms). The all-atom clashscore for this structure is 1.

All (26) close contacts within the same asymmetric unit are listed below, sorted by their clash magnitude.

Atom-1	Atom-2	Interatomic distance (Å)	Clash overlap (Å)
1:B:143:GLU:OE2	1:B:171:ARG:NH1	2.34	0.60
1:B:323:PHE:HZ	2:D:234[B]:VAL:HG23	1.69	0.57
1:A:139[B]:MET:SD	3:A:401[B]:GDP:N2	2.79	0.56
1:A:136:LYS:NZ	3:A:401[B]:GDP:H1'	2.22	0.54
1:B:142:ASP:OD2	5:B:501:HOH:O	2.19	0.50
1:A:65:SER:N	5:A:507:HOH:O	2.45	0.49
2:D:62:LYS:HB3	2:D:96:LEU:HD22	1.97	0.46
2:C:9:LYS:O	2:C:13:GLU:HG2	2.16	0.46
1:B:9:LYS:N	5:B:514:HOH:O	2.46	0.46
2:D:221:LYS:HE2	2:D:225:GLU:OE2	2.17	0.45
2:D:76:ASN:OD1	2:D:132:ARG:HD2	2.18	0.44
1:A:128:PRO:HB2	1:A:129:TYR:CD1	2.53	0.43
1:B:303:LYS:NZ	5:B:523:HOH:O	2.52	0.42
1:B:323:PHE:CZ	2:D:234[B]:VAL:HG23	2.50	0.42
1:A:244:ILE:HD13	1:A:281:ILE:HD13	2.01	0.42
2:C:117[B]:GLU:HG3	5:C:441:HOH:O	2.19	0.42
2:C:132:ARG:NH2	2:D:210:ILE:HG12	2.34	0.42
1:A:124:GLN:OE1	5:A:501:HOH:O	2.21	0.42
1:B:228:THR:HG22	1:B:229:GLY:N	2.36	0.41
1:B:248:LYS:HE2	1:B:287:GLU:OE2	2.21	0.41
2:C:117[B]:GLU:OE2	5:C:401:HOH:O	2.22	0.40
1:A:91:MET:O	1:A:373:ARG:NH2	2.54	0.40
2:C:124:LYS:HE3	5:C:674:HOH:O	2.21	0.40
1:B:230:ARG:NH1	5:B:513:HOH:O	2.45	0.40

All (2) symmetry-related close contacts are listed below. The label for Atom-2 includes the symmetry operator and encoded unit-cell translations to be applied.

Atom-1	Atom-2	Interatomic distance (Å)	Clash overlap (Å)
5:C:430:HOH:O	5:C:557:HOH:O[3_545]	1.96	0.24
5:C:717:HOH:O	5:D:659:HOH:O[1_455]	2.10	0.10

5.3 Torsion angles [i](#)

5.3.1 Protein backbone [i](#)

In the following table, the Percentiles column shows the percent Ramachandran outliers of the chain as a percentile score with respect to all X-ray entries followed by that with respect to entries of similar resolution.

The Analysed column shows the number of residues for which the backbone conformation was analysed, and the total number of residues.

Mol	Chain	Analysed	Favoured	Allowed	Outliers	Percentiles	
1	A	372/394 (94%)	369 (99%)	1 (0%)	2 (0%)	34	17
1	B	376/394 (95%)	371 (99%)	4 (1%)	1 (0%)	46	29
2	C	278/282 (99%)	275 (99%)	3 (1%)	0	100	100
2	D	287/282 (102%)	285 (99%)	2 (1%)	0	100	100
All	All	1313/1352 (97%)	1300 (99%)	10 (1%)	3 (0%)	52	35

All (3) Ramachandran outliers are listed below:

Mol	Chain	Res	Type
1	B	333	ARG
1	A	223	ARG
1	A	333	ARG

5.3.2 Protein sidechains [i](#)

In the following table, the Percentiles column shows the percent sidechain outliers of the chain as a percentile score with respect to all X-ray entries followed by that with respect to entries of similar resolution.

The Analysed column shows the number of residues for which the sidechain conformation was analysed, and the total number of residues.

Mol	Chain	Analysed	Rotameric	Outliers	Percentiles	
1	A	313/326 (96%)	311 (99%)	2 (1%)	90	87
1	B	316/326 (97%)	313 (99%)	3 (1%)	84	78
2	C	218/219 (100%)	217 (100%)	1 (0%)	92	89
2	D	227/219 (104%)	227 (100%)	0	100	100
All	All	1074/1090 (98%)	1068 (99%)	6 (1%)	90	87

All (6) residues with a non-rotameric sidechain are listed below:

Mol	Chain	Res	Type
1	A	16	THR
1	A	70	ASP
2	C	150	ARG
1	B	16	THR
1	B	61	THR
1	B	86	ASP

Some sidechains can be flipped to improve hydrogen bonding and reduce clashes. There are no such sidechains identified.

5.3.3 RNA [i](#)

There are no RNA molecules in this entry.

5.4 Non-standard residues in protein, DNA, RNA chains [i](#)

There are no non-standard protein/DNA/RNA residues in this entry.

5.5 Carbohydrates [i](#)

There are no carbohydrates in this entry.

5.6 Ligand geometry [i](#)

8 ligands are modelled in this entry.

In the following table, the Counts columns list the number of bonds (or angles) for which Mogul statistics could be retrieved, the number of bonds (or angles) that are observed in the model and the number of bonds (or angles) that are defined in the chemical component dictionary. The Link column lists molecule types, if any, to which the group is linked. The Z score for a bond length

(or angle) is the number of standard deviations the observed value is removed from the expected value. A bond length (or angle) with $|Z| > 2$ is considered an outlier worth inspection. RMSZ is the root-mean-square of all Z scores of the bond lengths (or angles).

Mol	Type	Chain	Res	Link	Bond lengths			Bond angles		
					Counts	RMSZ	$\# Z > 2$	Counts	RMSZ	$\# Z > 2$
3	GDP	A	401[A]	-	23,30,30	1.12	2 (8%)	30,47,47	1.81	4 (13%)
3	GDP	A	401[B]	-	23,30,30	1.08	2 (8%)	30,47,47	1.84	6 (20%)
3	GDP	B	401	-	23,30,30	1.12	2 (8%)	30,47,47	1.95	6 (20%)
4	GOL	B	402	-	5,5,5	0.33	0	5,5,5	0.53	0
4	GOL	C	301	-	5,5,5	0.26	0	5,5,5	0.55	0
4	GOL	C	302	-	5,5,5	0.23	0	5,5,5	0.53	0
4	GOL	D	301	-	5,5,5	0.23	0	5,5,5	0.38	0
4	GOL	D	302	-	5,5,5	0.25	0	5,5,5	0.32	0

In the following table, the Chirals column lists the number of chiral outliers, the number of chiral centers analysed, the number of these observed in the model and the number defined in the chemical component dictionary. Similar counts are reported in the Torsion and Rings columns. '-' means no outliers of that kind were identified.

Mol	Type	Chain	Res	Link	Chirals	Torsions	Rings
3	GDP	A	401[A]	-	-	0/12/32/32	0/3/3/3
3	GDP	A	401[B]	-	-	0/12/32/32	0/3/3/3
3	GDP	B	401	-	-	0/12/32/32	0/3/3/3
4	GOL	B	402	-	-	0/4/4/4	0/0/0/0
4	GOL	C	301	-	-	0/4/4/4	0/0/0/0
4	GOL	C	302	-	-	0/4/4/4	0/0/0/0
4	GOL	D	301	-	-	0/4/4/4	0/0/0/0
4	GOL	D	302	-	-	0/4/4/4	0/0/0/0

All (6) bond length outliers are listed below:

Mol	Chain	Res	Type	Atoms	Z	Observed(Å)	Ideal(Å)
3	A	401[A]	GDP	C6-N1	3.00	1.38	1.33
3	B	401	GDP	C6-N1	3.19	1.39	1.33
3	A	401[B]	GDP	C6-N1	3.27	1.39	1.33
3	A	401[B]	GDP	C6-C5	3.35	1.47	1.41
3	B	401	GDP	C6-C5	3.78	1.48	1.41
3	A	401[A]	GDP	C6-C5	3.83	1.48	1.41

All (16) bond angle outliers are listed below:

Mol	Chain	Res	Type	Atoms	Z	Observed(°)	Ideal(°)
3	A	401[A]	GDP	C5-C6-N1	-6.46	114.75	123.59

Continued on next page...

Continued from previous page...

Mol	Chain	Res	Type	Atoms	Z	Observed(°)	Ideal(°)
3	A	401[B]	GDP	C5-C6-N1	-6.16	115.17	123.59
3	B	401	GDP	C5-C6-N1	-5.89	115.53	123.59
3	B	401	GDP	C2'-C1'-N9	-3.83	108.43	114.29
3	B	401	GDP	C6-C5-C4	-3.54	116.67	120.90
3	A	401[B]	GDP	C6-C5-C4	-3.12	117.17	120.90
3	A	401[A]	GDP	C6-C5-C4	-2.99	117.32	120.90
3	A	401[B]	GDP	C4'-O4'-C1'	-2.93	106.50	109.72
3	B	401	GDP	C4'-O4'-C1'	-2.50	106.97	109.72
3	B	401	GDP	N3-C2-N1	-2.40	123.78	127.44
3	A	401[B]	GDP	C2'-C1'-N9	-2.28	110.80	114.29
3	A	401[B]	GDP	N3-C2-N1	-2.05	124.31	127.44
3	A	401[A]	GDP	C2'-C3'-C4'	2.03	106.78	102.61
3	A	401[B]	GDP	C6-N1-C2	4.64	122.38	115.94
3	A	401[A]	GDP	C6-N1-C2	4.76	122.55	115.94
3	B	401	GDP	C6-N1-C2	4.90	122.74	115.94

There are no chirality outliers.

There are no torsion outliers.

There are no ring outliers.

1 monomer is involved in 3 short contacts:

Mol	Chain	Res	Type	Clashes	Symm-Clashes
3	A	401[B]	GDP	3	0

5.7 Other polymers [i](#)

There are no such residues in this entry.

5.8 Polymer linkage issues [i](#)

There are no chain breaks in this entry.

6 Fit of model and data ⓘ

6.1 Protein, DNA and RNA chains ⓘ

In the following table, the column labelled ‘#RSRZ> 2’ contains the number (and percentage) of RSRZ outliers, followed by percent RSRZ outliers for the chain as percentile scores relative to all X-ray entries and entries of similar resolution. The OWAB column contains the minimum, median, 95th percentile and maximum values of the occupancy-weighted average B-factor per residue. The column labelled ‘Q< 0.9’ lists the number of (and percentage) of residues with an average occupancy less than 0.9.

Mol	Chain	Analysed	<RSRZ>	#RSRZ>2	OWAB(Å ²)	Q<0.9
1	A	363/394 (92%)	0.04	10 (2%) 56 53	22, 45, 72, 117	1 (0%)
1	B	372/394 (94%)	0.23	15 (4%) 42 38	20, 51, 89, 122	5 (1%)
2	C	279/282 (98%)	-0.03	0 100 100	19, 31, 67, 104	0
2	D	279/282 (98%)	0.01	4 (1%) 78 76	19, 31, 80, 114	0
All	All	1293/1352 (95%)	0.07	29 (2%) 65 62	19, 42, 83, 122	6 (0%)

All (29) RSRZ outliers are listed below:

Mol	Chain	Res	Type	RSRZ
1	B	8	THR	5.4
1	A	223	ARG	3.7
1	B	62	ILE	3.5
1	A	141	ASP	3.5
1	B	283	ARG	3.3
1	B	220	ILE	3.3
1	B	95	ALA	3.3
2	D	280	LYS	3.1
2	D	279	SER	3.0
1	A	8	THR	2.9
1	B	96	ALA	2.9
2	D	26	LEU	2.9
1	A	20[A]	VAL	2.9
1	B	218	PHE	2.8
1	B	63	ASN	2.8
1	B	223	ARG	2.8
1	A	224	GLY	2.7
1	B	41	GLY	2.7
2	D	3	ILE	2.7
1	B	224	GLY	2.6
1	A	97	GLN	2.6

Continued on next page...

Continued from previous page...

Mol	Chain	Res	Type	RSRZ
1	B	64	THR	2.6
1	A	41	GLY	2.5
1	B	141	ASP	2.4
1	B	221	SER	2.4
1	A	222	GLY	2.3
1	B	265	LEU	2.2
1	A	96	ALA	2.1
1	A	221	SER	2.0

6.2 Non-standard residues in protein, DNA, RNA chains [i](#)

There are no non-standard protein/DNA/RNA residues in this entry.

6.3 Carbohydrates [i](#)

There are no carbohydrates in this entry.

6.4 Ligands [i](#)

In the following table, the Atoms column lists the number of modelled atoms in the group and the number defined in the chemical component dictionary. LLDF column lists the quality of electron density of the group with respect to its neighbouring residues in protein, DNA or RNA chains. The B-factors column lists the minimum, median, 95th percentile and maximum values of B factors of atoms in the group. The column labelled 'Q< 0.9' lists the number of atoms with occupancy less than 0.9.

Mol	Type	Chain	Res	Atoms	RSCC	RSR	LLDF	B-factors(\AA^2)	Q<0.9
3	GDP	A	401[A]	28/28	0.84	0.32	5.35	37,55,60,61	28
3	GDP	A	401[B]	28/28	0.84	0.32	5.21	43,58,79,96	28
4	GOL	C	301	6/6	0.79	0.21	4.76	64,77,84,85	0
4	GOL	B	402	6/6	0.86	0.24	3.08	44,70,85,98	0
4	GOL	D	302	6/6	0.79	0.17	1.47	60,72,82,82	0
3	GDP	B	401	28/28	0.92	0.16	1.31	55,72,82,86	0
4	GOL	D	301	6/6	0.97	0.10	-0.33	29,35,37,38	0
4	GOL	C	302	6/6	0.97	0.09	-0.58	34,41,46,46	0

6.5 Other polymers [i](#)

There are no such residues in this entry.