



Full wwPDB X-ray Structure Validation Report ⓘ

Jan 31, 2016 – 09:31 PM GMT

PDB ID : 1PD9
Title : Analysis of Three Crystal Structure Determinations of a 5-Methyl-6-N-Methylthylanilino Pyridopyrimidine antifolate Complex with Human Dihydrofolate Reductase
Authors : Cody, V.; Luft, J.R.; Pangborn, W.; Gangjee, A.
Deposited on : 2003-05-19
Resolution : 2.20 Å(reported)

This is a Full wwPDB X-ray Structure Validation Report for a publicly released PDB entry.
We welcome your comments at validation@mail.wwpdb.org
A user guide is available at
<http://wwpdb.org/validation/2016/XrayValidationReportHelp>
with specific help available everywhere you see the ⓘ symbol.

The following versions of software and data (see [references ⓘ](#)) were used in the production of this report:

MolProbity : 4.02b-467
Mogul : 1.7 (RC4), CSD as536be (2015)
Xtriage (Phenix) : 1.9-1692
EDS : rb-20026688
Percentile statistics : 20151230.v01 (using entries in the PDB archive December 30th 2015)
Refmac : 5.8.0135
CCP4 : 6.5.0
Ideal geometry (proteins) : Engh & Huber (2001)
Ideal geometry (DNA, RNA) : Parkinson et al. (1996)
Validation Pipeline (wwPDB-VP) : trunk26865

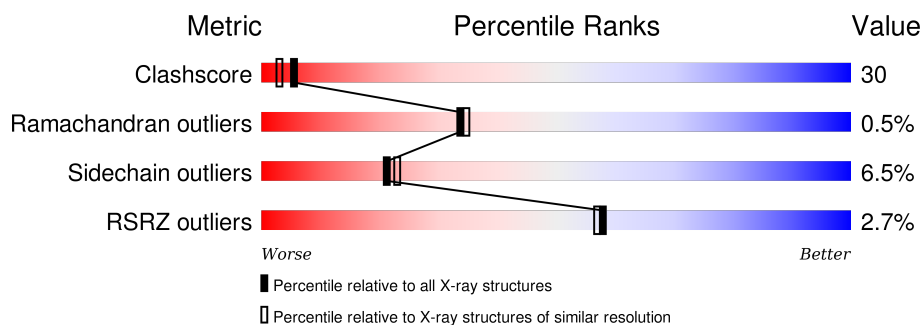
1 Overall quality at a glance

The following experimental techniques were used to determine the structure:

X-RAY DIFFRACTION

The reported resolution of this entry is 2.20 Å.

Percentile scores (ranging between 0-100) for global validation metrics of the entry are shown in the following graphic. The table shows the number of entries on which the scores are based.



Metric	Whole archive (#Entries)	Similar resolution (#Entries, resolution range(Å))
Clashscore	102246	4477 (2.20-2.20)
Ramachandran outliers	100387	4404 (2.20-2.20)
Sidechain outliers	100360	4405 (2.20-2.20)
RSRZ outliers	91569	3781 (2.20-2.20)

The table below summarises the geometric issues observed across the polymeric chains and their fit to the electron density. The red, orange, yellow and green segments on the lower bar indicate the fraction of residues that contain outliers for ≥ 3 , 2, 1 and 0 types of geometric quality criteria. A grey segment represents the fraction of residues that are not modelled. The numeric value for each fraction is indicated below the corresponding segment, with a dot representing fractions $\leq 5\%$. The upper red bar (where present) indicates the fraction of residues that have poor fit to the electron density. The numeric value is given above the bar.

Mol	Chain	Length	Quality of chain
1	A	186	

The following table lists non-polymeric compounds, carbohydrate monomers and non-standard residues in protein, DNA, RNA chains that are outliers for geometric or electron-density-fit criteria:

Mol	Type	Chain	Res	Chirality	Geometry	Clashes	Electron density
3	CO4	A	187	X	-	-	-

2 Entry composition [i](#)

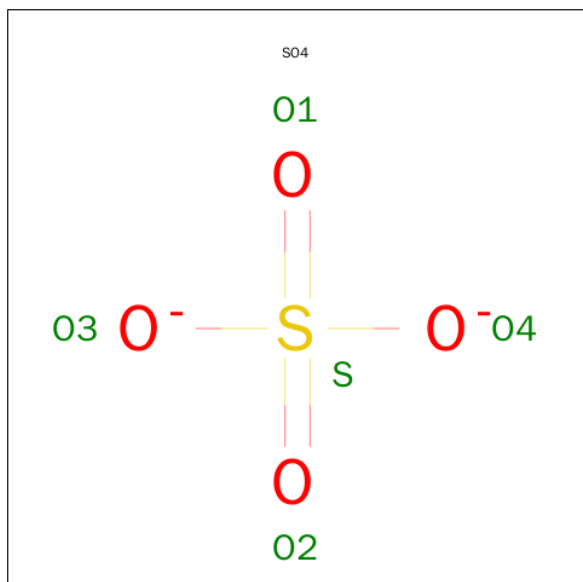
There are 4 unique types of molecules in this entry. The entry contains 1609 atoms, of which 0 are hydrogens and 0 are deuteriums.

In the tables below, the ZeroOcc column contains the number of atoms modelled with zero occupancy, the AltConf column contains the number of residues with at least one atom in alternate conformation and the Trace column contains the number of residues modelled with at most 2 atoms.

- Molecule 1 is a protein called Dihydrofolate reductase.

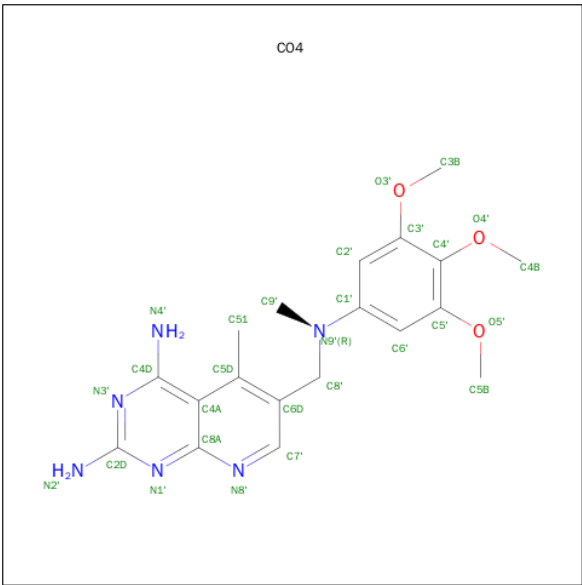
Mol	Chain	Residues	Atoms					ZeroOcc	AltConf	Trace
1	A	186	Total	C	N	O	S	0	0	0
			1502	963	253	279	7			

- Molecule 2 is SULFATE ION (three-letter code: SO4) (formula: O₄S).



Mol	Chain	Residues	Atoms			ZeroOcc	AltConf
2	A	1	Total	O	S	0	0
			5	4	1		
2	A	1	Total	O	S	0	0
			5	4	1		

- Molecule 3 is 2,4-DIAMINO-5-METHYL-6-[(3,4,5-TRIMETHOXY-N-METHYLANILINO) METHYL]PYRIDO[2,3-D]PYRIMIDINE (three-letter code: CO4) (formula: C₁₉H₂₄N₆O₃).



Mol	Chain	Residues	Atoms				ZeroOcc	AltConf
3	A	1	Total	C	N	O	0	0
			28	19	6	3		

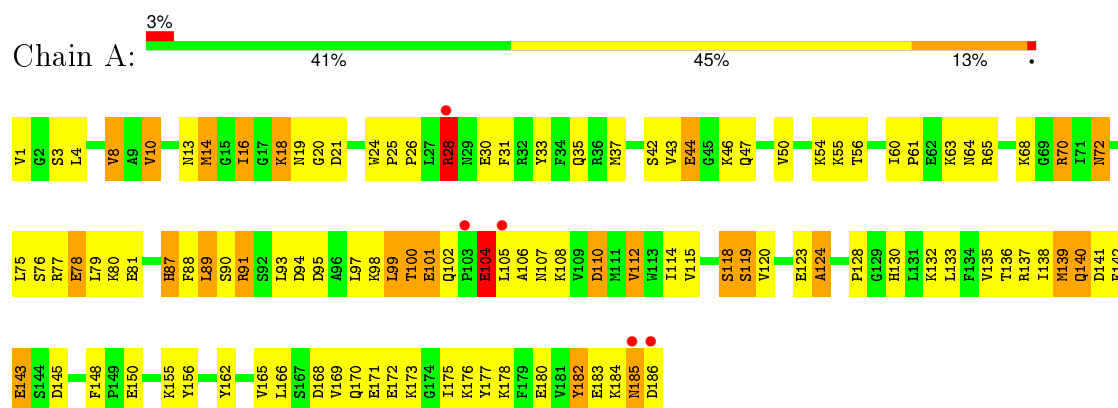
- Molecule 4 is water.

Mol	Chain	Residues	Atoms		ZeroOcc	AltConf
4	A	69	Total	O	0	0
			69	69		

3 Residue-property plots

These plots are drawn for all protein, RNA and DNA chains in the entry. The first graphic for a chain summarises the proportions of errors displayed in the second graphic. The second graphic shows the sequence view annotated by issues in geometry and electron density. Residues are color-coded according to the number of geometric quality criteria for which they contain at least one outlier: green = 0, yellow = 1, orange = 2 and red = 3 or more. A red dot above a residue indicates a poor fit to the electron density (RSRZ > 2). Stretches of 2 or more consecutive residues without any outlier are shown as a green connector. Residues present in the sample, but not in the model, are shown in grey.

• Molecule 1: Dihydrofolate reductase



4 Data and refinement statistics

Property	Value	Source
Space group	H 3	Depositor
Cell constants a, b, c, α , β , γ	85.43 Å 85.43 Å 78.36 Å 90.00° 90.00° 120.00°	Depositor
Resolution (Å)	8.00 – 2.20 34.62 – 2.20	Depositor EDS
% Data completeness (in resolution range)	90.8 (8.00-2.20) 96.1 (34.62-2.20)	Depositor EDS
R_{merge}	0.03	Depositor
R_{sym}	(Not available)	Depositor
$\langle I/\sigma(I) \rangle$ ¹	3.21 (at 2.20 Å)	Xtriage
Refinement program	PROLSQ	Depositor
R, R_{free}	0.179 , 0.213 0.182 , (Not available)	Depositor DCC
R_{free} test set	No test flags present.	DCC
Wilson B-factor (Å ²)	27.0	Xtriage
Anisotropy	0.238	Xtriage
Bulk solvent k_{sol} (e/Å ³), B_{sol} (Å ²)	0.35 , 69.4	EDS
Estimated twinning fraction	0.036 for h,-h-k,-l	Xtriage
L-test for twinning ²	$\langle L \rangle = 0.50$, $\langle L^2 \rangle = 0.34$	Xtriage
Outliers	0 of 10667 reflections	Xtriage
F_o, F_c correlation	0.95	EDS
Total number of atoms	1609	wwPDB-VP
Average B, all atoms (Å ²)	23.0	wwPDB-VP

Xtriage's analysis on translational NCS is as follows: *The largest off-origin peak in the Patterson function is 5.99% of the height of the origin peak. No significant pseudotranslation is detected.*

¹ Intensities estimated from amplitudes.

² Theoretical values of $\langle |L| \rangle$, $\langle L^2 \rangle$ for acentric reflections are 0.5, 0.375 respectively for untwinned datasets, and 0.333, 0.2 for perfectly twinned datasets.

5 Model quality ⓘ

5.1 Standard geometry ⓘ

Bond lengths and bond angles in the following residue types are not validated in this section: SO4, CO4

The Z score for a bond length (or angle) is the number of standard deviations the observed value is removed from the expected value. A bond length (or angle) with $|Z| > 5$ is considered an outlier worth inspection. RMSZ is the root-mean-square of all Z scores of the bond lengths (or angles).

Mol	Chain	Bond lengths		Bond angles	
		RMSZ	$\# Z > 5$	RMSZ	$\# Z > 5$
1	A	1.11	3/1537 (0.2%)	2.30	68/2073 (3.3%)

All (3) bond length outliers are listed below:

Mol	Chain	Res	Type	Atoms	Z	Observed(Å)	Ideal(Å)
1	A	180	GLU	CD-OE2	5.52	1.31	1.25
1	A	30	GLU	CD-OE1	-5.38	1.19	1.25
1	A	180	GLU	CD-OE1	-5.11	1.20	1.25

All (68) bond angle outliers are listed below:

Mol	Chain	Res	Type	Atoms	Z	Observed(°)	Ideal(°)
1	A	91	ARG	CD-NE-CZ	22.90	155.66	123.60
1	A	28	ARG	NE-CZ-NH2	19.29	129.95	120.30
1	A	70	ARG	NE-CZ-NH2	-12.60	114.00	120.30
1	A	110	ASP	CB-CG-OD1	11.54	128.69	118.30
1	A	33	TYR	CB-CG-CD1	11.42	127.85	121.00
1	A	162	TYR	CB-CG-CD1	-10.46	114.73	121.00
1	A	33	TYR	CB-CG-CD2	-9.90	115.06	121.00
1	A	99	LEU	CA-CB-CG	9.43	136.99	115.30
1	A	95	ASP	CB-CG-OD2	9.04	126.44	118.30
1	A	177	TYR	CB-CG-CD2	8.88	126.33	121.00
1	A	123	GLU	CB-CG-CD	8.82	138.00	114.20
1	A	137	ARG	NE-CZ-NH2	8.78	124.69	120.30
1	A	145	ASP	CB-CG-OD1	8.58	126.02	118.30
1	A	112	VAL	CG1-CB-CG2	7.82	123.42	110.90
1	A	140	GLN	N-CA-CB	7.75	124.55	110.60
1	A	77	ARG	CA-CB-CG	7.50	129.91	113.40
1	A	139	MET	CA-CB-CG	7.44	125.94	113.30
1	A	136	THR	N-CA-CB	7.36	124.29	110.30

Continued on next page...

Continued from previous page...

Mol	Chain	Res	Type	Atoms	Z	Observed(°)	Ideal(°)
1	A	28	ARG	NH1-CZ-NH2	-7.13	111.56	119.40
1	A	70	ARG	NH1-CZ-NH2	7.05	127.15	119.40
1	A	88	PHE	O-C-N	7.01	133.92	122.70
1	A	101	GLU	CB-CA-C	-6.99	96.42	110.40
1	A	70	ARG	CD-NE-CZ	6.80	133.12	123.60
1	A	101	GLU	OE1-CD-OE2	6.73	131.38	123.30
1	A	132	LYS	CD-CE-NZ	-6.73	96.22	111.70
1	A	65	ARG	NE-CZ-NH1	6.72	123.66	120.30
1	A	77	ARG	NE-CZ-NH1	6.45	123.53	120.30
1	A	50	VAL	CG1-CB-CG2	-6.40	100.66	110.90
1	A	124	ALA	C-N-CA	6.39	137.68	121.70
1	A	81	GLU	CG-CD-OE1	6.27	130.84	118.30
1	A	115	VAL	CA-CB-CG2	6.16	120.14	110.90
1	A	80	LYS	CA-CB-CG	6.03	126.67	113.40
1	A	172	GLU	CA-CB-CG	5.99	126.58	113.40
1	A	172	GLU	CG-CD-OE1	5.98	130.25	118.30
1	A	3	SER	O-C-N	5.95	132.22	122.70
1	A	135	VAL	CA-CB-CG1	5.93	119.80	110.90
1	A	89	LEU	CA-C-O	-5.92	107.66	120.10
1	A	91	ARG	NE-CZ-NH2	5.91	123.26	120.30
1	A	8	VAL	CA-CB-CG2	5.85	119.68	110.90
1	A	56	THR	CA-CB-OG1	-5.75	96.93	109.00
1	A	78	GLU	CA-CB-CG	5.72	126.00	113.40
1	A	104	GLU	OE1-CD-OE2	-5.72	116.44	123.30
1	A	145	ASP	CB-CA-C	5.64	121.67	110.40
1	A	101	GLU	N-CA-CB	5.62	120.71	110.60
1	A	90	SER	N-CA-CB	5.50	118.75	110.50
1	A	177	TYR	CB-CG-CD1	-5.49	117.71	121.00
1	A	3	SER	CB-CA-C	-5.47	99.71	110.10
1	A	10	VAL	CA-CB-CG1	5.44	119.06	110.90
1	A	150	GLU	CG-CD-OE2	-5.41	107.48	118.30
1	A	87	HIS	CG-ND1-CE1	5.39	115.74	108.20
1	A	182	TYR	O-C-N	5.38	131.30	122.70
1	A	81	GLU	CG-CD-OE2	-5.30	107.69	118.30
1	A	104	GLU	CA-CB-CG	5.30	125.06	113.40
1	A	104	GLU	CB-CG-CD	5.30	128.51	114.20
1	A	16	ILE	C-N-CA	-5.28	111.22	122.30
1	A	18	LYS	CD-CE-NZ	-5.27	99.58	111.70
1	A	65	ARG	CG-CD-NE	5.25	122.83	111.80
1	A	143	GLU	OE1-CD-OE2	-5.24	117.01	123.30
1	A	44	GLU	CB-CG-CD	5.23	128.31	114.20
1	A	77	ARG	CG-CD-NE	5.21	122.75	111.80

Continued on next page...

Continued from previous page...

Mol	Chain	Res	Type	Atoms	Z	Observed(°)	Ideal(°)
1	A	150	GLU	N-CA-CB	-5.20	101.23	110.60
1	A	120	VAL	O-C-N	5.13	130.91	122.70
1	A	47	GLN	O-C-N	5.12	130.89	122.70
1	A	141	ASP	CB-CG-OD1	5.12	122.91	118.30
1	A	118	SER	O-C-N	5.07	130.81	122.70
1	A	14	MET	CG-SD-CE	5.06	108.30	100.20
1	A	21	ASP	CA-CB-CG	5.06	124.53	113.40
1	A	169	VAL	CA-CB-CG2	-5.06	103.31	110.90

There are no chirality outliers.

There are no planarity outliers.

5.2 Too-close contacts

In the following table, the Non-H and H(model) columns list the number of non-hydrogen atoms and hydrogen atoms in the chain respectively. The H(added) column lists the number of hydrogen atoms added and optimized by MolProbity. The Clashes column lists the number of clashes within the asymmetric unit, whereas Symm-Clashes lists symmetry related clashes.

Mol	Chain	Non-H	H(model)	H(added)	Clashes	Symm-Clashes
1	A	1502	0	1511	90	0
2	A	10	0	0	0	0
3	A	28	0	24	3	0
4	A	69	0	0	10	1
All	All	1609	0	1535	91	1

The all-atom clashscore is defined as the number of clashes found per 1000 atoms (including hydrogen atoms). The all-atom clashscore for this structure is 30.

All (91) close contacts within the same asymmetric unit are listed below, sorted by their clash magnitude.

Atom-1	Atom-2	Interatomic distance (Å)	Clash overlap (Å)
1:A:1:VAL:HG21	1:A:100:THR:CG2	1.79	1.11
1:A:184:LYS:HA	4:A:254:HOH:O	1.52	1.07
1:A:35:GLN:HE21	1:A:70:ARG:HH12	1.03	1.03
1:A:26:PRO:O	1:A:173:LYS:HE3	1.63	0.99
1:A:1:VAL:HG21	1:A:100:THR:HG23	1.00	0.98
1:A:1:VAL:CG2	1:A:100:THR:HG23	1.94	0.97
1:A:19:ASN:O	4:A:257:HOH:O	1.80	0.96
1:A:99:LEU:HD23	1:A:105:LEU:HD12	1.51	0.92

Continued on next page...

Continued from previous page...

Atom-1	Atom-2	Interatomic distance (Å)	Clash overlap (Å)
1:A:35:GLN:NE2	1:A:70:ARG:HH12	1.70	0.88
1:A:99:LEU:HA	1:A:102:GLN:HG2	1.59	0.85
1:A:79:LEU:O	1:A:91:ARG:NH1	2.12	0.83
1:A:130:HIS:HE1	1:A:183:GLU:HG3	1.42	0.83
1:A:130:HIS:HB2	4:A:215:HOH:O	1.78	0.83
1:A:61:PRO:HG2	1:A:64:ASN:HD22	1.42	0.82
1:A:130:HIS:ND1	1:A:184:LYS:O	2.11	0.81
1:A:102:GLN:O	1:A:106:ALA:HB2	1.85	0.76
1:A:184:LYS:HG2	1:A:185:ASN:N	2.00	0.76
1:A:35:GLN:HE21	1:A:70:ARG:NH1	1.84	0.74
1:A:119:SER:OG	4:A:251:HOH:O	2.04	0.74
1:A:28:ARG:HH12	1:A:173:LYS:NZ	1.86	0.73
1:A:72:ASN:H	1:A:87:HIS:HD2	1.36	0.73
1:A:104:GLU:O	1:A:108:LYS:HE2	1.89	0.73
1:A:130:HIS:CE1	1:A:183:GLU:HG3	2.25	0.72
1:A:130:HIS:HE1	1:A:183:GLU:CG	2.02	0.72
1:A:31:PHE:HE1	3:A:187:CO4:H7'	1.54	0.71
1:A:78:GLU:OE1	4:A:256:HOH:O	2.09	0.70
1:A:100:THR:O	1:A:106:ALA:HA	1.93	0.69
1:A:114:ILE:HD13	1:A:124:ALA:HB2	1.75	0.67
1:A:105:LEU:HA	1:A:108:LYS:HD2	1.77	0.67
1:A:104:GLU:O	1:A:108:LYS:CE	2.44	0.65
1:A:97:LEU:O	1:A:100:THR:HB	1.98	0.64
1:A:75:LEU:O	4:A:244:HOH:O	2.14	0.64
1:A:72:ASN:H	1:A:87:HIS:CD2	2.15	0.64
1:A:171:GLU:CD	1:A:176:LYS:HZ3	2.02	0.63
1:A:99:LEU:HD23	1:A:105:LEU:CD1	2.27	0.62
1:A:94:ASP:O	1:A:98:LYS:HE3	2.00	0.62
1:A:61:PRO:HG2	1:A:64:ASN:ND2	2.14	0.61
1:A:43:VAL:HG11	1:A:46:LYS:CE	2.32	0.59
1:A:184:LYS:HE3	1:A:186:ASP:OD1	2.01	0.59
1:A:26:PRO:HB2	1:A:28:ARG:NH1	2.17	0.59
1:A:78:GLU:CD	4:A:256:HOH:O	2.42	0.58
1:A:42:SER:OG	1:A:110:ASP:OD1	2.18	0.58
1:A:55:LYS:HG2	4:A:246:HOH:O	2.04	0.57
1:A:114:ILE:CD1	1:A:124:ALA:HB2	2.34	0.57
1:A:155:LYS:HE3	4:A:214:HOH:O	2.05	0.56
1:A:43:VAL:HG11	1:A:46:LYS:HE3	1.88	0.56
1:A:35:GLN:NE2	1:A:70:ARG:NH1	2.47	0.55
1:A:94:ASP:C	1:A:98:LYS:HE3	2.28	0.54
1:A:8:VAL:HG21	1:A:148:PHE:CD1	2.42	0.54

Continued on next page...

Continued from previous page...

Atom-1	Atom-2	Interatomic distance (Å)	Clash overlap (Å)
1:A:98:LYS:HA	1:A:101:GLU:HG2	1.87	0.54
1:A:4:LEU:HD12	1:A:112:VAL:HG22	1.91	0.53
1:A:44:GLU:HB2	4:A:243:HOH:O	2.09	0.52
1:A:171:GLU:CD	1:A:176:LYS:NZ	2.65	0.50
1:A:31:PHE:HE1	3:A:187:CO4:C7'	2.22	0.50
1:A:99:LEU:CD2	1:A:105:LEU:HD12	2.33	0.50
1:A:99:LEU:CD2	1:A:105:LEU:CD1	2.89	0.50
1:A:54:LYS:NZ	1:A:78:GLU:OE1	2.44	0.50
1:A:28:ARG:HH12	1:A:173:LYS:HZ2	1.61	0.49
1:A:155:LYS:HD3	1:A:186:ASP:OD2	2.13	0.49
1:A:138:ILE:HG21	1:A:142:PHE:HE2	1.77	0.49
1:A:139:MET:HE1	1:A:178:LYS:HD3	1.96	0.48
1:A:140:GLN:HG3	1:A:142:PHE:CE2	2.49	0.47
1:A:76:SER:HB3	1:A:89:LEU:HD11	1.96	0.47
1:A:156:TYR:CE2	1:A:184:LYS:HB2	2.51	0.46
1:A:138:ILE:CG2	1:A:142:PHE:HE2	2.28	0.46
1:A:139:MET:CE	1:A:178:LYS:HD3	2.46	0.46
1:A:24:TRP:HB2	1:A:25:PRO:HD2	1.98	0.45
1:A:60:ILE:O	1:A:61:PRO:C	2.55	0.45
1:A:43:VAL:HG11	1:A:46:LYS:HE2	1.98	0.45
1:A:114:ILE:CD1	1:A:124:ALA:CB	2.94	0.45
1:A:10:VAL:HG11	1:A:148:PHE:HB3	1.99	0.44
1:A:37:MET:CE	1:A:165:VAL:HG22	2.47	0.44
1:A:184:LYS:CG	1:A:185:ASN:N	2.78	0.44
1:A:13:ASN:O	1:A:14:MET:HB2	2.19	0.43
1:A:168:ASP:N	1:A:168:ASP:OD2	2.48	0.43
1:A:35:GLN:HE22	1:A:70:ARG:HH22	1.66	0.43
3:A:187:CO4:H2'	3:A:187:CO4:H9'1	1.53	0.42
1:A:93:LEU:O	1:A:97:LEU:HG	2.19	0.42
1:A:28:ARG:NH1	1:A:173:LYS:NZ	2.62	0.42
1:A:170:GLN:O	1:A:176:LYS:HA	2.20	0.42
1:A:138:ILE:HG21	1:A:142:PHE:CE2	2.55	0.42
1:A:133:LEU:HB2	1:A:182:TYR:HB2	2.02	0.42
1:A:20:GLY:HA2	1:A:55:LYS:HE2	2.02	0.42
1:A:171:GLU:HA	1:A:175:ILE:O	2.20	0.42
1:A:18:LYS:HD3	1:A:143:GLU:O	2.20	0.42
1:A:104:GLU:O	1:A:108:LYS:HD2	2.20	0.41
1:A:25:PRO:HA	1:A:26:PRO:HD3	1.81	0.41
1:A:28:ARG:NH1	1:A:173:LYS:CE	2.85	0.40
1:A:16:ILE:HG21	1:A:16:ILE:HD13	1.83	0.40
1:A:184:LYS:HG2	1:A:185:ASN:H	1.84	0.40

Continued on next page...

Continued from previous page...

Atom-1	Atom-2	Interatomic distance (Å)	Clash overlap (Å)
1:A:168:ASP:O	1:A:170:GLN:NE2	2.54	0.40

All (1) symmetry-related close contacts are listed below. The label for Atom-2 includes the symmetry operator and encoded unit-cell translations to be applied.

Atom-1	Atom-2	Interatomic distance (Å)	Clash overlap (Å)
4:A:238:HOH:O	4:A:255:HOH:O[6_555]	1.56	0.64

5.3 Torsion angles [i](#)

5.3.1 Protein backbone [i](#)

In the following table, the Percentiles column shows the percent Ramachandran outliers of the chain as a percentile score with respect to all X-ray entries followed by that with respect to entries of similar resolution.

The Analysed column shows the number of residues for which the backbone conformation was analysed, and the total number of residues.

Mol	Chain	Analysed	Favoured	Allowed	Outliers	Percentiles
1	A	184/186 (99%)	178 (97%)	5 (3%)	1 (0%)	34 35

All (1) Ramachandran outliers are listed below:

Mol	Chain	Res	Type
1	A	104	GLU

5.3.2 Protein sidechains [i](#)

In the following table, the Percentiles column shows the percent sidechain outliers of the chain as a percentile score with respect to all X-ray entries followed by that with respect to entries of similar resolution.

The Analysed column shows the number of residues for which the sidechain conformation was analysed, and the total number of residues.

Mol	Chain	Analysed	Rotameric	Outliers	Percentiles
1	A	168/168 (100%)	157 (94%)	11 (6%)	21 23

All (11) residues with a non-rotameric sidechain are listed below:

Mol	Chain	Res	Type
1	A	28	ARG
1	A	63	LYS
1	A	68	LYS
1	A	72	ASN
1	A	100	THR
1	A	107	ASN
1	A	118	SER
1	A	119	SER
1	A	128	PRO
1	A	166	LEU
1	A	185	ASN

Some sidechains can be flipped to improve hydrogen bonding and reduce clashes. All (3) such sidechains are listed below:

Mol	Chain	Res	Type
1	A	35	GLN
1	A	64	ASN
1	A	87	HIS

5.3.3 RNA [i](#)

There are no RNA molecules in this entry.

5.4 Non-standard residues in protein, DNA, RNA chains [i](#)

There are no non-standard protein/DNA/RNA residues in this entry.

5.5 Carbohydrates [i](#)

There are no carbohydrates in this entry.

5.6 Ligand geometry [i](#)

3 ligands are modelled in this entry.

In the following table, the Counts columns list the number of bonds (or angles) for which Mogul statistics could be retrieved, the number of bonds (or angles) that are observed in the model and the number of bonds (or angles) that are defined in the chemical component dictionary. The Link column lists molecule types, if any, to which the group is linked. The Z score for a bond length

(or angle) is the number of standard deviations the observed value is removed from the expected value. A bond length (or angle) with $|Z| > 2$ is considered an outlier worth inspection. RMSZ is the root-mean-square of all Z scores of the bond lengths (or angles).

Mol	Type	Chain	Res	Link	Bond lengths			Bond angles		
					Counts	RMSZ	# Z > 2	Counts	RMSZ	# Z > 2
3	CO4	A	187	-	30,30,30	1.49	5 (16%)	37,43,43	3.57	18 (48%)
2	SO4	A	188	-	4,4,4	0.73	0	6,6,6	0.40	0
2	SO4	A	189	-	4,4,4	0.94	0	6,6,6	1.04	1 (16%)

In the following table, the Chirals column lists the number of chiral outliers, the number of chiral centers analysed, the number of these observed in the model and the number defined in the chemical component dictionary. Similar counts are reported in the Torsion and Rings columns. '-' means no outliers of that kind were identified.

Mol	Type	Chain	Res	Link	Chirals	Torsions	Rings
3	CO4	A	187	-	1/1/1/1	0/14/14/14	0/3/3/3
2	SO4	A	188	-	-	0/0/0/0	0/0/0/0
2	SO4	A	189	-	-	0/0/0/0	0/0/0/0

All (5) bond length outliers are listed below:

Mol	Chain	Res	Type	Atoms	Z	Observed(Å)	Ideal(Å)
3	A	187	CO4	C2D-N2'	-2.45	1.29	1.34
3	A	187	CO4	C7'-C6D	2.49	1.43	1.37
3	A	187	CO4	C8A-N8'	2.85	1.42	1.37
3	A	187	CO4	C8'-C6D	2.91	1.56	1.51
3	A	187	CO4	C7'-N8'	3.55	1.37	1.31

All (19) bond angle outliers are listed below:

Mol	Chain	Res	Type	Atoms	Z	Observed(°)	Ideal(°)
3	A	187	CO4	C5B-O5'-C5'	-8.66	104.40	117.54
3	A	187	CO4	O5'-C5'-C6'	-8.20	110.21	124.21
3	A	187	CO4	C5D-C4A-C8A	-5.73	113.99	118.32
3	A	187	CO4	O4'-C4'-C5'	-5.64	111.89	120.13
3	A	187	CO4	N2'-C2D-N1'	-4.52	109.13	117.80
3	A	187	CO4	N1'-C2D-N3'	-3.55	122.04	127.44
3	A	187	CO4	C9'-N9'-C1'	-3.27	113.96	119.56
3	A	187	CO4	O3'-C3'-C2'	-3.24	118.68	124.21
3	A	187	CO4	C51-C5D-C4A	-2.43	117.69	121.77
3	A	187	CO4	C4A-C4D-N4'	2.02	126.70	122.73
3	A	187	CO4	C7'-N8'-C8A	2.15	119.46	116.93
2	A	189	SO4	O4-S-O3	2.17	117.81	108.98

Continued on next page...

Continued from previous page...

Mol	Chain	Res	Type	Atoms	Z	Observed(°)	Ideal(°)
3	A	187	CO4	C8'-C6D-C5D	2.18	124.26	120.50
3	A	187	CO4	C9'-N9'-C8'	3.19	122.89	114.23
3	A	187	CO4	C6'-C5'-C4'	3.61	124.44	120.23
3	A	187	CO4	O3'-C3'-C4'	3.79	122.10	115.26
3	A	187	CO4	O5'-C5'-C4'	5.58	125.33	115.26
3	A	187	CO4	N2'-C2D-N3'	6.91	128.63	117.20
3	A	187	CO4	O4'-C4'-C3'	6.92	130.24	120.13

All (1) chirality outliers are listed below:

Mol	Chain	Res	Type	Atom
3	A	187	CO4	N9'

There are no torsion outliers.

There are no ring outliers.

1 monomer is involved in 3 short contacts:

Mol	Chain	Res	Type	Clashes	Symm-Clashes
3	A	187	CO4	3	0

5.7 Other polymers [i](#)

There are no such residues in this entry.

5.8 Polymer linkage issues [i](#)

There are no chain breaks in this entry.

6 Fit of model and data [i](#)

6.1 Protein, DNA and RNA chains [i](#)

In the following table, the column labelled ‘#RSRZ> 2’ contains the number (and percentage) of RSRZ outliers, followed by percent RSRZ outliers for the chain as percentile scores relative to all X-ray entries and entries of similar resolution. The OWAB column contains the minimum, median, 95th percentile and maximum values of the occupancy-weighted average B-factor per residue. The column labelled ‘Q< 0.9’ lists the number of (and percentage) of residues with an average occupancy less than 0.9.

Mol	Chain	Analysed	<RSRZ>	#RSRZ>2	OWAB(Å ²)	Q<0.9
1	A	186/186 (100%)	-0.37	5 (2%) 58 57	9, 21, 43, 54	0

All (5) RSRZ outliers are listed below:

Mol	Chain	Res	Type	RSRZ
1	A	185	ASN	2.7
1	A	186	ASP	2.5
1	A	103	PRO	2.3
1	A	105	LEU	2.2
1	A	28	ARG	2.0

6.2 Non-standard residues in protein, DNA, RNA chains [i](#)

There are no non-standard protein/DNA/RNA residues in this entry.

6.3 Carbohydrates [i](#)

There are no carbohydrates in this entry.

6.4 Ligands [i](#)

In the following table, the Atoms column lists the number of modelled atoms in the group and the number defined in the chemical component dictionary. LLDF column lists the quality of electron density of the group with respect to its neighbouring residues in protein, DNA or RNA chains. The B-factors column lists the minimum, median, 95th percentile and maximum values of B factors of atoms in the group. The column labelled ‘Q< 0.9’ lists the number of atoms with occupancy less than 0.9.

Mol	Type	Chain	Res	Atoms	RSCC	RSR	LLDF	B-factors(Å ²)	Q<0.9
3	CO4	A	187	28/28	0.90	0.12	1.08	15,21,26,27	0

Continued on next page...

Continued from previous page...

Mol	Type	Chain	Res	Atoms	RSCC	RSR	LLDF	B-factors(\AA^2)	Q<0.9
2	SO4	A	188	5/5	0.99	0.09	-0.08	22,22,23,23	0
2	SO4	A	189	5/5	0.97	0.09	-	46,46,47,47	0

6.5 Other polymers [i](#)

There are no such residues in this entry.