



Full wwPDB X-ray Structure Validation Report ⓘ

Feb 1, 2016 – 07:39 PM GMT

PDB ID : 4PJ7
Title : Structure of human MR1-5-OP-RU in complex with human MAIT TRBV6-4 TCR
Authors : Birkinshaw, R.W.; Rossjohn, J.
Deposited on : 2014-05-12
Resolution : 2.50 Å(reported)

This is a Full wwPDB X-ray Structure Validation Report for a publicly released PDB entry.
We welcome your comments at validation@mail.wwpdb.org
A user guide is available at
<http://wwpdb.org/validation/2016/XrayValidationReportHelp>
with specific help available everywhere you see the ⓘ symbol.

The following versions of software and data (see [references ⓘ](#)) were used in the production of this report:

MolProbity : 4.02b-467
Mogul : 1.7 (RC4), CSD as536be (2015)
Xtriage (Phenix) : 1.9-1692
EDS : rb-20026688
Percentile statistics : 20151230.v01 (using entries in the PDB archive December 30th 2015)
Refmac : 5.8.0135
CCP4 : 6.5.0
Ideal geometry (proteins) : Engh & Huber (2001)
Ideal geometry (DNA, RNA) : Parkinson et al. (1996)
Validation Pipeline (wwPDB-VP) : trunk26865

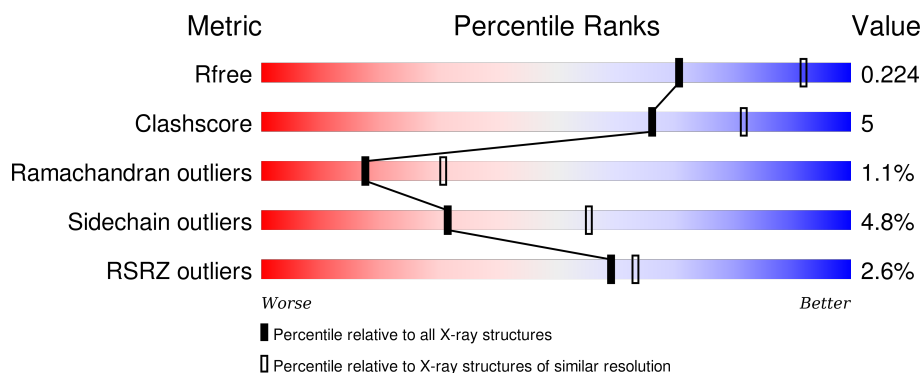
1 Overall quality at a glance

The following experimental techniques were used to determine the structure:

X-RAY DIFFRACTION

The reported resolution of this entry is 2.50 Å.

Percentile scores (ranging between 0-100) for global validation metrics of the entry are shown in the following graphic. The table shows the number of entries on which the scores are based.



Metric	Whole archive (#Entries)	Similar resolution (#Entries, resolution range(Å))
R_{free}	91344	3553 (2.50-2.50)
Clashscore	102246	4242 (2.50-2.50)
Ramachandran outliers	100387	4156 (2.50-2.50)
Sidechain outliers	100360	4158 (2.50-2.50)
RSRZ outliers	91569	3562 (2.50-2.50)

The table below summarises the geometric issues observed across the polymeric chains and their fit to the electron density. The red, orange, yellow and green segments on the lower bar indicate the fraction of residues that contain outliers for ≥ 3 , 2, 1 and 0 types of geometric quality criteria. A grey segment represents the fraction of residues that are not modelled. The numeric value for each fraction is indicated below the corresponding segment, with a dot representing fractions $\leq 5\%$. The upper red bar (where present) indicates the fraction of residues that have poor fit to the electron density. The numeric value is given above the bar.

Mol	Chain	Length	Quality of chain
1	A	271	<div> <div>3%</div> <div>82%</div> <div>14%</div> <div>••</div> </div>
1	C	271	<div> <div>5%</div> <div>79%</div> <div>17%</div> <div>••</div> </div>
2	B	99	<div> <div>%</div> <div>87%</div> <div>10%</div> <div>•</div> </div>
2	D	99	<div> <div>6%</div> <div>85%</div> <div>5%</div> <div>• 7%</div> </div>
3	E	203	<div> <div>86%</div> <div>12%</div> <div>•</div> </div>

Continued on next page...

Continued from previous page...

Mol	Chain	Length	Quality of chain
3	G	203	<div> <div></div> <div>4%</div> <div>82%</div> <div>14%</div> <div>..</div> </div>
4	F	243	<div> <div></div> <div>%</div> <div>84%</div> <div>13%</div> <div>..</div> </div>
4	H	243	<div> <div></div> <div>%</div> <div>82%</div> <div>13%</div> <div>..</div> </div>

2 Entry composition

There are 6 unique types of molecules in this entry. The entry contains 12989 atoms, of which 0 are hydrogens and 0 are deuteriums.

In the tables below, the ZeroOcc column contains the number of atoms modelled with zero occupancy, the AltConf column contains the number of residues with at least one atom in alternate conformation and the Trace column contains the number of residues modelled with at most 2 atoms.

- Molecule 1 is a protein called Major histocompatibility complex class I-related gene protein.

Mol	Chain	Residues	Atoms					ZeroOcc	AltConf	Trace
1	A	264	Total	C	N	O	S	0	0	0
			2150	1378	373	388	11			
1	C	264	Total	C	N	O	S	0	0	0
			2131	1363	371	387	10			

There are 4 discrepancies between the modelled and reference sequences:

Chain	Residue	Modelled	Actual	Comment	Reference
A	0	MET	-	initiating methionine	UNP Q95460
A	261	SER	CYS	engineered mutation	UNP Q95460
C	0	MET	-	initiating methionine	UNP Q95460
C	261	SER	CYS	engineered mutation	UNP Q95460

- Molecule 2 is a protein called Beta-2-microglobulin.

Mol	Chain	Residues	Atoms					ZeroOcc	AltConf	Trace
2	B	96	Total	C	N	O	S	0	0	0
			769	494	131	142	2			
2	D	92	Total	C	N	O	S	0	0	0
			704	455	119	128	2			

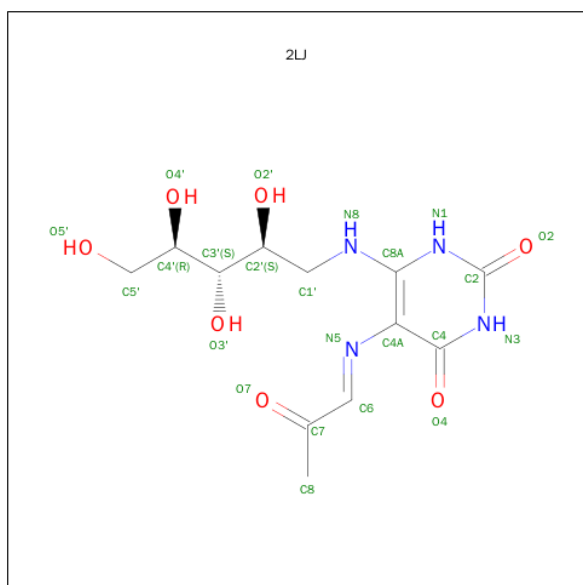
- Molecule 3 is a protein called TCR-alpha.

Mol	Chain	Residues	Atoms					ZeroOcc	AltConf	Trace
3	E	199	Total	C	N	O	S	0	0	0
			1519	957	244	308	10			
3	G	199	Total	C	N	O	S	0	0	0
			1507	955	242	300	10			

- Molecule 4 is a protein called TCR-beta.

Mol	Chain	Residues	Atoms					ZeroOcc	AltConf	Trace
4	F	238	Total	C	N	O	S	0	0	0
			1811	1141	315	347	8			
4	H	238	Total	C	N	O	S	0	0	0
			1826	1148	322	348	8			

- Molecule 5 is 1-deoxy-1-({2,6-dioxo-5-[(E)-(2-oxopropylidene)amino]-1,2,3,6-tetrahydropyrimidin-4-yl}amino)-D-ribose (three-letter code: 2LJ) (formula: C₁₂H₁₈N₄O₇).



Mol	Chain	Residues	Atoms				ZeroOcc	AltConf
5	A	1	Total	C	N	O	0	0
			22	12	4	6		
5	C	1	Total	C	N	O	0	0
			22	12	4	6		

- Molecule 6 is water.

Mol	Chain	Residues	Atoms		ZeroOcc	AltConf
6	A	121	Total	O	0	0
			121	121		
6	B	39	Total	O	0	0
			39	39		
6	C	80	Total	O	0	0
			80	80		
6	D	27	Total	O	0	0
			27	27		
6	E	63	Total	O	0	0
			63	63		

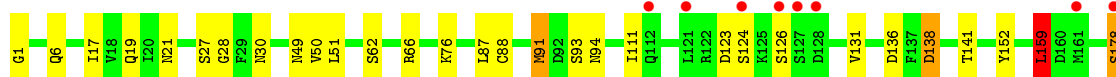
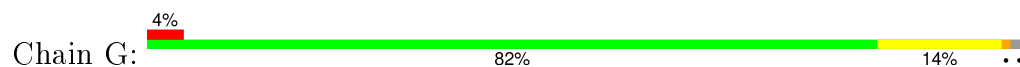
Continued on next page...

Continued from previous page...

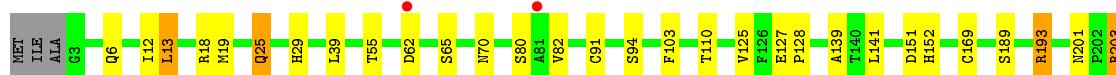
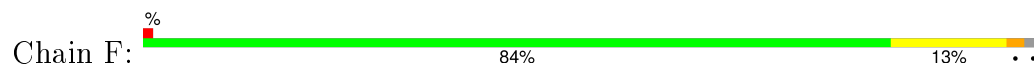
Mol	Chain	Residues	Atoms		ZeroOcc	AltConf
6	F	57	Total 57	O 57	0	0
6	G	54	Total 54	O 54	0	0
6	H	87	Total 87	O 87	0	0



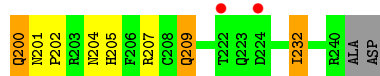
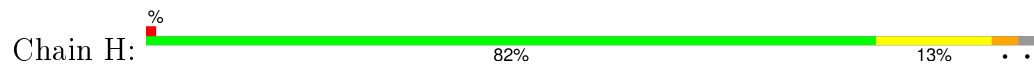
• Molecule 3: TCR-alpha



• Molecule 4: TCR-beta



• Molecule 4: TCR-beta



4 Data and refinement statistics

Property	Value	Source
Space group	C 1 2 1	Depositor
Cell constants a, b, c, α , β , γ	216.59Å 70.43Å 142.61Å 90.00° 104.00° 90.00°	Depositor
Resolution (Å)	36.60 – 2.50 36.10 – 2.50	Depositor EDS
% Data completeness (in resolution range)	88.3 (36.60-2.50) 88.3 (36.10-2.50)	Depositor EDS
R_{merge}	(Not available)	Depositor
R_{sym}	(Not available)	Depositor
$\langle I/\sigma(I) \rangle$ ¹	1.97 (at 2.51Å)	Xtriage
Refinement program	BUSTER 2.10.0	Depositor
R, R_{free}	0.171 , 0.219 0.179 , 0.224	Depositor DCC
R_{free} test set	3223 reflections (5.29%)	DCC
Wilson B-factor (Å ²)	39.8	Xtriage
Anisotropy	0.799	Xtriage
Bulk solvent k_{sol} (e/Å ³), B_{sol} (Å ²)	0.31 , 57.3	EDS
Estimated twinning fraction	No twinning to report.	Xtriage
L-test for twinning ²	$\langle L \rangle = 0.48$, $\langle L^2 \rangle = 0.31$	Xtriage
Outliers	0 of 64112 reflections	Xtriage
F_o, F_c correlation	0.95	EDS
Total number of atoms	12989	wwPDB-VP
Average B, all atoms (Å ²)	51.0	wwPDB-VP

Xtriage's analysis on translational NCS is as follows: *The largest off-origin peak in the Patterson function is 3.69% of the height of the origin peak. No significant pseudotranslation is detected.*

¹Intensities estimated from amplitudes.

²Theoretical values of $\langle |L| \rangle$, $\langle L^2 \rangle$ for acentric reflections are 0.5, 0.375 respectively for untwinned datasets, and 0.333, 0.2 for perfectly twinned datasets.

5 Model quality [i](#)

5.1 Standard geometry [i](#)

Bond lengths and bond angles in the following residue types are not validated in this section: 2LJ

The Z score for a bond length (or angle) is the number of standard deviations the observed value is removed from the expected value. A bond length (or angle) with $|Z| > 5$ is considered an outlier worth inspection. RMSZ is the root-mean-square of all Z scores of the bond lengths (or angles).

Mol	Chain	Bond lengths		Bond angles	
		RMSZ	# Z >5	RMSZ	# Z >5
1	A	0.55	0/2216	0.73	1/3014 (0.0%)
1	C	0.50	0/2195	0.71	1/2987 (0.0%)
2	B	0.49	0/792	0.71	0/1080
2	D	0.46	0/726	0.72	0/996
3	E	0.52	0/1553	0.75	0/2113
3	G	0.53	0/1541	0.77	1/2096 (0.0%)
4	F	0.50	0/1860	0.74	0/2545
4	H	0.51	1/1875 (0.1%)	0.75	0/2563
All	All	0.51	1/12758 (0.0%)	0.74	3/17394 (0.0%)

Chiral center outliers are detected by calculating the chiral volume of a chiral center and verifying if the center is modelled as a planar moiety or with the opposite hand. A planarity outlier is detected by checking planarity of atoms in a peptide group, atoms in a mainchain group or atoms of a sidechain that are expected to be planar.

Mol	Chain	#Chirality outliers	#Planarity outliers
1	A	0	1

All (1) bond length outliers are listed below:

Mol	Chain	Res	Type	Atoms	Z	Observed(Å)	Ideal(Å)
4	H	232	ILE	CG1-CD1	5.15	1.85	1.50

All (3) bond angle outliers are listed below:

Mol	Chain	Res	Type	Atoms	Z	Observed(°)	Ideal(°)
3	G	159	LEU	CA-CB-CG	6.13	129.39	115.30
1	A	97	GLY	C-N-CA	5.25	134.83	121.70
1	C	191	THR	C-N-CA	5.03	134.27	121.70

There are no chirality outliers.

All (1) planarity outliers are listed below:

Mol	Chain	Res	Type	Group
1	A	98	CYS	Mainchain

5.2 Too-close contacts ⓘ

In the following table, the Non-H and H(model) columns list the number of non-hydrogen atoms and hydrogen atoms in the chain respectively. The H(added) column lists the number of hydrogen atoms added and optimized by MolProbity. The Clashes column lists the number of clashes within the asymmetric unit, whereas Symm-Clashes lists symmetry related clashes.

Mol	Chain	Non-H	H(model)	H(added)	Clashes	Symm-Clashes
1	A	2150	0	2021	22	0
1	C	2131	0	1988	27	0
2	B	769	0	715	4	0
2	D	704	0	619	2	0
3	E	1519	0	1395	14	0
3	G	1507	0	1391	20	0
4	F	1811	0	1685	17	0
4	H	1826	0	1711	27	0
5	A	22	0	18	2	0
5	C	22	0	18	0	0
6	A	121	0	0	0	0
6	B	39	0	0	1	0
6	C	80	0	0	0	0
6	D	27	0	0	0	0
6	E	63	0	0	1	0
6	F	57	0	0	0	0
6	G	54	0	0	0	0
6	H	87	0	0	2	0
All	All	12989	0	11561	118	0

The all-atom clashscore is defined as the number of clashes found per 1000 atoms (including hydrogen atoms). The all-atom clashscore for this structure is 5.

All (118) close contacts within the same asymmetric unit are listed below, sorted by their clash magnitude.

Atom-1	Atom-2	Interatomic distance (Å)	Clash overlap (Å)
4:H:232:ILE:CD1	4:H:232:ILE:CG1	1.86	1.54
1:A:191:THR:HG23	1:A:192:PHE:H	1.36	0.86

Continued on next page...

Continued from previous page...

Atom-1	Atom-2	Interatomic distance (Å)	Clash overlap (Å)
1:A:193:PRO:HG3	1:C:14:ASP:HB2	1.64	0.78
4:H:201:ASN:HB3	4:H:204:ASN:ND2	2.00	0.74
3:G:159:LEU:HB2	4:H:169:CYS:HB3	1.72	0.71
3:G:91:MET:HE1	4:H:98:ASN:HA	1.74	0.70
3:G:111:ILE:HD13	3:G:138:ASP:HA	1.75	0.67
4:H:196:ALA:O	4:H:200:GLN:HG2	1.95	0.67
1:A:31:HIS:HE1	1:A:206:TYR:OH	1.79	0.65
3:G:136:ASP:OD1	4:H:193:ARG:NH2	2.29	0.64
1:C:99:GLU:HB2	1:C:107:THR:OG1	1.98	0.64
1:C:48:PRO:O	1:C:52:GLU:HG2	1.99	0.62
3:E:19:GLN:HE21	3:E:21:ASN:HD21	1.48	0.61
1:A:203:HIS:HE1	6:B:136:HOH:O	1.83	0.60
4:F:12:ILE:HD12	4:F:214:GLY:HA2	1.83	0.60
3:G:19:GLN:HE21	3:G:21:ASN:HD21	1.49	0.59
4:F:25:GLN:HE22	4:F:29:HIS:H	1.50	0.59
4:H:25:GLN:HE22	4:H:29:HIS:H	1.50	0.58
1:C:43:LYS:HD2	1:C:62:TYR:HB3	1.86	0.58
1:C:111:GLN:HG2	1:C:121:ILE:HG12	1.86	0.57
1:C:151:LEU:HD22	3:E:51:LEU:HD12	1.87	0.57
3:G:91:MET:CE	4:H:98:ASN:HA	2.34	0.57
2:B:84:HIS:HD2	2:B:86:THR:OG1	1.86	0.57
3:E:129:LYS:HD3	3:E:174:TRP:CD1	2.39	0.57
3:G:159:LEU:HD11	4:H:193:ARG:HB2	1.86	0.57
4:H:151:ASP:HB2	4:H:174:PRO:HG3	1.87	0.56
1:A:211:TYR:HB2	1:A:259:GLU:HB3	1.87	0.56
1:A:111:GLN:HG2	1:A:121:ILE:HG12	1.86	0.56
4:H:160:ASN:HD21	4:H:204:ASN:HA	1.71	0.56
3:G:1:GLY:HA2	3:G:27:SER:H	1.70	0.56
1:C:241:TRP:HZ3	1:C:243:SER:HB2	1.71	0.56
4:F:13:LEU:HD21	4:F:19:MET:HB2	1.89	0.55
4:H:194:VAL:HG21	4:H:198:PHE:CD2	2.41	0.55
4:F:125:VAL:HG13	4:F:235:ALA:HB3	1.89	0.55
1:A:43:LYS:HD2	1:A:62:TYR:HB3	1.88	0.54
1:C:77:LEU:HD13	1:C:92:TYR:HB2	1.90	0.54
4:H:160:ASN:ND2	4:H:205:HIS:H	2.06	0.53
2:B:73:THR:HG22	2:B:75:LYS:H	1.73	0.53
4:F:128:PRO:HD3	4:F:141:LEU:HG	1.91	0.53
4:H:117:ASN:HB3	6:H:306:HOH:O	2.08	0.52
1:A:77:LEU:HD13	1:A:92:TYR:HB2	1.92	0.52
1:A:62:TYR:HE2	3:G:94:ASN:HD22	1.57	0.52
1:C:113:ALA:HB2	2:D:60:TRP:CE2	2.45	0.51

Continued on next page...

Continued from previous page...

Atom-1	Atom-2	Interatomic distance (Å)	Clash overlap (Å)
1:A:90:HIS:HD2	1:A:115:ASP:OD2	1.94	0.51
1:C:198:LEU:HB2	1:C:244:ILE:HG22	1.93	0.50
1:C:90:HIS:HD2	1:C:115:ASP:OD2	1.94	0.50
4:H:207:ARG:HH12	4:H:209:GLN:CG	2.24	0.50
1:A:48:PRO:O	1:A:52:GLU:HG3	2.11	0.49
3:G:178:SER:HA	3:G:180:PHE:N	2.27	0.49
3:G:6:GLN:HE22	3:G:88:CYS:H	1.59	0.49
3:E:6:GLN:HE22	3:E:88:CYS:H	1.60	0.49
1:A:191:THR:CG2	1:A:192:PHE:H	2.16	0.49
4:H:201:ASN:HB3	4:H:204:ASN:HD22	1.76	0.48
1:C:221:ILE:HD11	1:C:254:TYR:CD1	2.48	0.48
3:G:30:ASN:HB2	3:G:91:MET:HG2	1.95	0.48
4:H:10:SER:OG	4:H:152:HIS:CE1	2.67	0.48
4:H:128:PRO:HD3	4:H:141:LEU:HG	1.94	0.48
3:G:17:ILE:HG12	3:G:76:LYS:HG2	1.95	0.48
4:F:201:ASN:OD1	4:F:203:ARG:HG3	2.13	0.47
1:C:221:ILE:HD11	1:C:254:TYR:HD1	1.78	0.47
1:C:214:TRP:HB3	1:C:221:ILE:HD12	1.97	0.47
2:B:24:ASN:HD22	2:B:67:TYR:HB3	1.80	0.47
1:A:15:PRO:HB2	1:A:19:VAL:HG23	1.97	0.47
3:E:1:GLY:HA3	3:E:26:THR:HA	1.96	0.47
1:A:151:LEU:HD22	3:G:51:LEU:HD12	1.97	0.47
1:C:31:HIS:HD2	1:C:176:LEU:CD2	2.28	0.47
4:F:207:ARG:NH1	4:F:209:GLN:HG3	2.30	0.47
4:F:110:THR:OG1	4:F:152:HIS:HE1	1.97	0.46
4:H:207:ARG:NH1	4:H:209:GLN:CG	2.79	0.46
3:E:28:GLY:HA3	3:E:93:SER:HB3	1.97	0.46
5:A:301:2LJ:H17	5:A:301:2LJ:H10	1.77	0.46
3:E:136:ASP:OD1	4:F:193:ARG:NH2	2.48	0.46
1:C:31:HIS:CD2	1:C:176:LEU:HD23	2.51	0.46
3:G:28:GLY:HA3	3:G:93:SER:HB3	1.97	0.45
1:A:169:LEU:HD23	1:A:176:LEU:HD13	1.97	0.45
3:G:50:VAL:O	3:G:66:ARG:HD3	2.16	0.45
1:C:212:MET:HG2	1:C:258:VAL:HG22	1.98	0.45
1:A:191:THR:HG23	1:A:192:PHE:N	2.18	0.45
4:F:207:ARG:HH12	4:F:209:GLN:HG3	1.82	0.45
1:C:15:PRO:HB2	1:C:19:VAL:HG23	1.99	0.45
3:E:154:THR:HG21	4:F:189:SER:OG	2.17	0.45
3:E:49:ASN:HD21	3:E:62:SER:CB	2.30	0.45
4:F:110:THR:OG1	4:F:152:HIS:CE1	2.70	0.45
1:A:212:MET:HE1	1:A:240:ALA:HB3	1.99	0.45

Continued on next page...

Continued from previous page...

Atom-1	Atom-2	Interatomic distance (Å)	Clash overlap (Å)
1:C:221:ILE:HG21	1:C:244:ILE:HD11	1.98	0.44
1:A:113:ALA:HB2	2:B:60:TRP:CE2	2.53	0.44
3:G:141:THR:HG21	3:G:192:PRO:HD3	2.00	0.44
1:A:212:MET:HG2	1:A:258:VAL:HG22	2.00	0.44
1:A:156:TRP:CZ3	1:A:161:CYS:HB2	2.53	0.44
4:H:128:PRO:HG3	4:H:139:ALA:HB1	2.00	0.44
1:C:216:LYS:O	1:C:253:LEU:O	2.36	0.43
3:E:50:VAL:O	3:E:66:ARG:HD3	2.18	0.43
1:C:169:LEU:HD23	1:C:176:LEU:HD13	2.00	0.43
1:C:19:VAL:HA	1:C:20:PRO:HD3	1.97	0.43
1:C:225:ILE:HG12	1:C:244:ILE:HD11	1.99	0.43
4:H:10:SER:HG	4:H:152:HIS:CE1	2.37	0.43
3:E:122:ARG:HB2	4:F:127:GLU:HB2	2.00	0.43
3:E:112:GLN:HA	6:E:333:HOH:O	2.18	0.42
1:C:156:TRP:CZ3	1:C:161:CYS:HB2	2.54	0.42
1:C:147:GLN:HA	1:C:150:LEU:HD12	2.01	0.42
2:D:87:LEU:HB2	2:D:88:SER:H	1.68	0.42
4:H:207:ARG:NH1	4:H:209:GLN:HG2	2.33	0.42
4:H:194:VAL:HG22	4:H:198:PHE:HB3	2.02	0.42
1:A:71:GLN:HG3	6:H:328:HOH:O	2.18	0.42
1:A:212:MET:CE	1:A:240:ALA:HB3	2.50	0.42
4:F:128:PRO:HG3	4:F:139:ALA:HB1	2.01	0.41
1:C:225:ILE:HG12	1:C:244:ILE:CD1	2.50	0.41
3:G:49:ASN:HD21	3:G:62:SER:CB	2.33	0.41
4:F:152:HIS:HB3	4:F:213:TYR:HB2	2.03	0.41
3:G:131:VAL:CG2	4:H:144:LEU:HD11	2.51	0.41
3:E:43:PRO:HD2	4:F:103:PHE:CG	2.56	0.41
1:C:31:HIS:CD2	1:C:176:LEU:CD2	3.04	0.41
5:A:301:2LJ:H1	5:A:301:2LJ:O4	2.21	0.40
3:G:152:TYR:CE1	4:H:177:GLU:HA	2.55	0.40
4:F:6:GLN:NE2	4:F:91:CYS:H	2.19	0.40
4:H:6:GLN:NE2	4:H:91:CYS:H	2.19	0.40
4:H:207:ARG:NH1	4:H:209:GLN:HG3	2.37	0.40
3:E:49:ASN:HD21	3:E:62:SER:HB2	1.85	0.40

There are no symmetry-related clashes.

5.3 Torsion angles

5.3.1 Protein backbone

In the following table, the Percentiles column shows the percent Ramachandran outliers of the chain as a percentile score with respect to all X-ray entries followed by that with respect to entries of similar resolution.

The Analysed column shows the number of residues for which the backbone conformation was analysed, and the total number of residues.

Mol	Chain	Analysed	Favoured	Allowed	Outliers	Percentiles	
1	A	260/271 (96%)	249 (96%)	9 (4%)	2 (1%)	24	41
1	C	260/271 (96%)	245 (94%)	10 (4%)	5 (2%)	10	16
2	B	94/99 (95%)	93 (99%)	1 (1%)	0	100	100
2	D	88/99 (89%)	79 (90%)	4 (4%)	5 (6%)	2	2
3	E	197/203 (97%)	192 (98%)	5 (2%)	0	100	100
3	G	197/203 (97%)	185 (94%)	7 (4%)	5 (2%)	7	10
4	F	236/243 (97%)	226 (96%)	10 (4%)	0	100	100
4	H	236/243 (97%)	228 (97%)	8 (3%)	0	100	100
All	All	1568/1632 (96%)	1497 (96%)	54 (3%)	17 (1%)	17	31

All (17) Ramachandran outliers are listed below:

Mol	Chain	Res	Type
1	A	193	PRO
1	C	192	PHE
2	D	88	SER
3	G	123	ASP
3	G	124	SER
2	D	87	LEU
3	G	178	SER
3	G	126	SER
1	C	224	GLU
2	D	17	ASN
3	G	179	ASP
2	D	85	VAL
2	D	89	GLN
1	C	19	VAL
1	C	16	ILE
1	A	16	ILE
1	C	193	PRO

5.3.2 Protein sidechains ⓘ

In the following table, the Percentiles column shows the percent sidechain outliers of the chain as a percentile score with respect to all X-ray entries followed by that with respect to entries of similar resolution.

The Analysed column shows the number of residues for which the sidechain conformation was analysed, and the total number of residues.

Mol	Chain	Analysed	Rotameric	Outliers	Percentiles	
1	A	224/241 (93%)	215 (96%)	9 (4%)	38	64
1	C	219/241 (91%)	210 (96%)	9 (4%)	37	63
2	B	83/94 (88%)	80 (96%)	3 (4%)	42	69
2	D	71/94 (76%)	68 (96%)	3 (4%)	36	62
3	E	165/180 (92%)	161 (98%)	4 (2%)	57	82
3	G	161/180 (89%)	157 (98%)	4 (2%)	55	82
4	F	189/205 (92%)	174 (92%)	15 (8%)	15	28
4	H	192/205 (94%)	176 (92%)	16 (8%)	14	26
All	All	1304/1440 (91%)	1241 (95%)	63 (5%)	31	55

All (63) residues with a non-rotameric sidechain are listed below:

Mol	Chain	Res	Type
1	A	73	PHE
1	A	79	ARG
1	A	98	CYS
1	A	128	SER
1	A	140	LYS
1	A	178	ARG
1	A	187	ASN
1	A	195	VAL
1	A	226	ASP
2	B	40	LEU
2	B	70	PHE
2	B	89	GLN
1	C	72	MET
1	C	73	PHE
1	C	140	LYS
1	C	173	LYS
1	C	178	ARG
1	C	187	ASN
1	C	226	ASP

Continued on next page...

Continued from previous page...

Mol	Chain	Res	Type
1	C	243	SER
1	C	244	ILE
2	D	40	LEU
2	D	69	GLU
2	D	85	VAL
3	E	77	GLU
3	E	87	LEU
3	E	159	LEU
3	E	162	ARG
4	F	13	LEU
4	F	18	ARG
4	F	25	GLN
4	F	39	LEU
4	F	55	THR
4	F	62	ASP
4	F	65	SER
4	F	70	ASN
4	F	80	SER
4	F	82	VAL
4	F	94	SER
4	F	151	ASP
4	F	169	CYS
4	F	193	ARG
4	F	203	ARG
3	G	87	LEU
3	G	91	MET
3	G	138	ASP
3	G	159	LEU
4	H	25	GLN
4	H	28	ARG
4	H	39	LEU
4	H	55	THR
4	H	65	SER
4	H	70	ASN
4	H	99	ASN
4	H	122	GLU
4	H	137	GLN
4	H	141	LEU
4	H	153	VAL
4	H	169	CYS
4	H	193	ARG
4	H	200	GLN

Continued on next page...

Continued from previous page...

Mol	Chain	Res	Type
4	H	202	PRO
4	H	209	GLN

Some sidechains can be flipped to improve hydrogen bonding and reduce clashes. All (31) such sidechains are listed below:

Mol	Chain	Res	Type
1	A	31	HIS
1	A	81	GLN
1	A	90	HIS
1	A	117	GLN
1	A	177	GLN
1	A	203	HIS
1	A	257	HIS
2	B	24	ASN
2	B	84	HIS
1	C	81	GLN
1	C	90	HIS
1	C	257	HIS
3	E	6	GLN
3	E	19	GLN
3	E	49	ASN
3	E	169	ASN
4	F	6	GLN
4	F	25	GLN
4	F	70	ASN
4	F	152	HIS
3	G	6	GLN
3	G	19	GLN
3	G	38	HIS
3	G	49	ASN
3	G	94	ASN
4	H	6	GLN
4	H	25	GLN
4	H	135	HIS
4	H	160	ASN
4	H	209	GLN
4	H	231	GLN

5.3.3 RNA ⓘ

There are no RNA molecules in this entry.

5.4 Non-standard residues in protein, DNA, RNA chains ⓘ

There are no non-standard protein/DNA/RNA residues in this entry.

5.5 Carbohydrates ⓘ

There are no carbohydrates in this entry.

5.6 Ligand geometry ⓘ

2 ligands are modelled in this entry.

In the following table, the Counts columns list the number of bonds (or angles) for which Mogul statistics could be retrieved, the number of bonds (or angles) that are observed in the model and the number of bonds (or angles) that are defined in the chemical component dictionary. The Link column lists molecule types, if any, to which the group is linked. The Z score for a bond length (or angle) is the number of standard deviations the observed value is removed from the expected value. A bond length (or angle) with $|Z| > 2$ is considered an outlier worth inspection. RMSZ is the root-mean-square of all Z scores of the bond lengths (or angles).

Mol	Type	Chain	Res	Link	Bond lengths			Bond angles		
					Counts	RMSZ	$\# Z > 2$	Counts	RMSZ	$\# Z > 2$
5	2LJ	A	301	1	16,22,23	1.35	2 (12%)	16,29,31	4.87	5 (31%)
5	2LJ	C	301	1	16,22,23	1.55	2 (12%)	16,29,31	4.66	4 (25%)

In the following table, the Chirals column lists the number of chiral outliers, the number of chiral centers analysed, the number of these observed in the model and the number defined in the chemical component dictionary. Similar counts are reported in the Torsion and Rings columns. '-' means no outliers of that kind were identified.

Mol	Type	Chain	Res	Link	Chirals	Torsions	Rings
5	2LJ	A	301	1	-	0/18/19/20	0/1/1/1
5	2LJ	C	301	1	-	0/18/19/20	0/1/1/1

All (4) bond length outliers are listed below:

Mol	Chain	Res	Type	Atoms	Z	Observed(Å)	Ideal(Å)
5	A	301	2LJ	C4-N3	3.03	1.38	1.33
5	C	301	2LJ	C4-N3	3.09	1.38	1.33
5	A	301	2LJ	C8A-N8	3.13	1.39	1.34
5	C	301	2LJ	C8A-N8	4.56	1.41	1.34

All (9) bond angle outliers are listed below:

Mol	Chain	Res	Type	Atoms	Z	Observed(°)	Ideal(°)
5	A	301	2LJ	C4A-C4-N3	-7.06	113.94	123.59
5	C	301	2LJ	C4A-C4-N3	-6.92	114.13	123.59
5	A	301	2LJ	C8A-C4A-N5	-3.50	112.46	126.53
5	C	301	2LJ	C8A-C4A-N5	-2.99	114.54	126.53
5	A	301	2LJ	N8-C8A-N1	3.02	122.37	118.65
5	C	301	2LJ	C4-C4A-C8A	9.57	120.91	114.52
5	A	301	2LJ	C4-C4A-C8A	11.67	122.31	114.52
5	A	301	2LJ	C4-N3-C2	12.73	126.25	115.25
5	C	301	2LJ	C4-N3-C2	13.71	127.10	115.25

There are no chirality outliers.

There are no torsion outliers.

There are no ring outliers.

1 monomer is involved in 2 short contacts:

Mol	Chain	Res	Type	Clashes	Symm-Clashes
5	A	301	2LJ	2	0

5.7 Other polymers [i](#)

There are no such residues in this entry.

5.8 Polymer linkage issues [i](#)

There are no chain breaks in this entry.

6 Fit of model and data ⓘ

6.1 Protein, DNA and RNA chains ⓘ

In the following table, the column labelled ‘#RSRZ> 2’ contains the number (and percentage) of RSRZ outliers, followed by percent RSRZ outliers for the chain as percentile scores relative to all X-ray entries and entries of similar resolution. The OWAB column contains the minimum, median, 95th percentile and maximum values of the occupancy-weighted average B-factor per residue. The column labelled ‘Q< 0.9’ lists the number of (and percentage) of residues with an average occupancy less than 0.9.

Mol	Chain	Analysed	<RSRZ>	#RSRZ>2	OWAB(Å ²)	Q<0.9
1	A	264/271 (97%)	-0.13	7 (2%) 58 62	20, 38, 72, 95	0
1	C	264/271 (97%)	0.17	13 (4%) 33 38	30, 52, 88, 103	0
2	B	96/99 (96%)	0.00	1 (1%) 84 86	26, 50, 77, 86	0
2	D	92/99 (92%)	0.34	6 (6%) 22 25	41, 77, 104, 118	0
3	E	199/203 (98%)	-0.14	1 (0%) 91 92	25, 43, 76, 99	0
3	G	199/203 (98%)	0.16	9 (4%) 37 42	23, 54, 99, 114	0
4	F	238/243 (97%)	-0.04	2 (0%) 87 89	30, 50, 74, 88	0
4	H	238/243 (97%)	-0.14	2 (0%) 87 89	23, 48, 88, 103	0
All	All	1590/1632 (97%)	0.00	41 (2%) 59 63	20, 48, 89, 118	0

All (41) RSRZ outliers are listed below:

Mol	Chain	Res	Type	RSRZ
1	C	222	VAL	6.5
3	G	126	SER	6.0
1	A	0	MET	5.0
1	A	17	HIS	4.3
2	D	79	ALA	4.2
1	C	192	PHE	4.0
3	G	127	SER	4.0
3	G	178	SER	3.9
3	G	124	SER	3.9
2	D	78	TYR	3.6
1	C	193	PRO	3.6
1	C	220	GLU	3.4
1	A	193	PRO	3.4
1	A	222	VAL	3.1
2	D	88	SER	3.1
1	C	191	THR	3.1

Continued on next page...

Continued from previous page...

Mol	Chain	Res	Type	RSRZ
3	G	112	GLN	3.0
4	H	222	THR	2.9
3	G	190	ILE	2.9
1	C	195	VAL	2.9
1	A	221	ILE	2.9
1	C	211	TYR	2.7
4	H	224	ASP	2.7
4	F	81	ALA	2.7
2	B	46	ILE	2.7
3	E	179	ASP	2.4
1	C	244	ILE	2.4
3	G	121	LEU	2.3
3	G	161	MET	2.3
1	A	191	THR	2.2
1	C	224	GLU	2.2
2	D	49	VAL	2.2
1	C	14	ASP	2.2
1	C	0	MET	2.2
2	D	46	ILE	2.2
4	F	62	ASP	2.2
2	D	72	PRO	2.1
1	C	19	VAL	2.1
3	G	128	ASP	2.0
1	C	223	GLN	2.0
1	A	195	VAL	2.0

6.2 Non-standard residues in protein, DNA, RNA chains ⓘ

There are no non-standard protein/DNA/RNA residues in this entry.

6.3 Carbohydrates ⓘ

There are no carbohydrates in this entry.

6.4 Ligands ⓘ

In the following table, the Atoms column lists the number of modelled atoms in the group and the number defined in the chemical component dictionary. LLDF column lists the quality of electron density of the group with respect to its neighbouring residues in protein, DNA or RNA chains. The B-factors column lists the minimum, median, 95th percentile and maximum values of B factors

of atoms in the group. The column labelled 'Q< 0.9' lists the number of atoms with occupancy less than 0.9.

Mol	Type	Chain	Res	Atoms	RSCC	RSR	LLDF	B-factors(\AA^2)	Q<0.9
5	2LJ	A	301	22/23	0.98	0.18	1.48	18,26,31,33	0
5	2LJ	C	301	22/23	0.98	0.17	1.24	22,28,32,34	0

6.5 Other polymers [i](#)

There are no such residues in this entry.