



Full wwPDB X-ray Structure Validation Report ⓘ

Jan 31, 2016 – 09:34 PM GMT

PDB ID : 1PO1
Title : POLIOVIRUS (TYPE 1, MAHONEY) IN COMPLEX WITH R80633, AN INHIBITOR OF VIRAL REPLICATION
Authors : Hiremath, C.N.; Filman, D.J.; Grant, R.A.; Hogle, J.M.
Deposited on : 1997-01-08
Resolution : 2.90 Å(reported)

This is a Full wwPDB X-ray Structure Validation Report for a publicly released PDB entry.
We welcome your comments at validation@mail.wwpdb.org
A user guide is available at
<http://wwpdb.org/validation/2016/XrayValidationReportHelp>
with specific help available everywhere you see the ⓘ symbol.

The following versions of software and data (see [references ⓘ](#)) were used in the production of this report:

MolProbity : 4.02b-467
Mogul : 1.7 (RC4), CSD as536be (2015)
Xtriage (Phenix) : 1.9-1692
EDS : rb-20026688
Percentile statistics : 20151230.v01 (using entries in the PDB archive December 30th 2015)
Refmac : 5.8.0135
CCP4 : 6.5.0
Ideal geometry (proteins) : Engh & Huber (2001)
Ideal geometry (DNA, RNA) : Parkinson et al. (1996)
Validation Pipeline (wwPDB-VP) : trunk26865

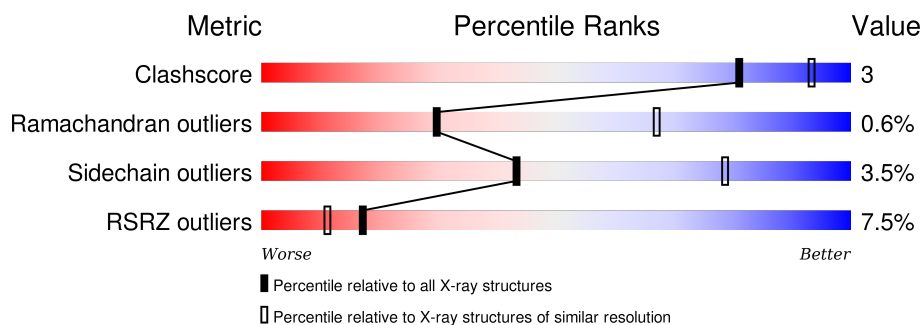
1 Overall quality at a glance

The following experimental techniques were used to determine the structure:

X-RAY DIFFRACTION

The reported resolution of this entry is 2.90 Å.

Percentile scores (ranging between 0-100) for global validation metrics of the entry are shown in the following graphic. The table shows the number of entries on which the scores are based.



Metric	Whole archive (#Entries)	Similar resolution (#Entries, resolution range(Å))
Clashscore	102246	1668 (2.90-2.90)
Ramachandran outliers	100387	1630 (2.90-2.90)
Sidechain outliers	100360	1632 (2.90-2.90)
RSRZ outliers	91569	1456 (2.90-2.90)

The table below summarises the geometric issues observed across the polymeric chains and their fit to the electron density. The red, orange, yellow and green segments on the lower bar indicate the fraction of residues that contain outliers for ≥ 3 , 2, 1 and 0 types of geometric quality criteria. A grey segment represents the fraction of residues that are not modelled. The numeric value for each fraction is indicated below the corresponding segment, with a dot representing fractions $\leq 5\%$. The upper red bar (where present) indicates the fraction of residues that have poor fit to the electron density. The numeric value is given above the bar.

Mol	Chain	Length	Quality of chain
1	0	5	<div> <div>100%</div> <div>100%</div> </div>
2	1	302	<div> <div>7%</div> <div>79%</div> <div>14%</div> <div>6%</div> </div>
3	2	272	<div> <div>6%</div> <div>85%</div> <div>12%</div> <div>..</div> </div>
4	3	238	<div> <div>2%</div> <div>87%</div> <div>12%</div> <div>.</div> </div>
5	4	68	<div> <div>24%</div> <div>75%</div> <div>16%</div> <div>9%</div> </div>

2 Entry composition

There are 7 unique types of molecules in this entry. The entry contains 6690 atoms, of which 0 are hydrogens and 0 are deuteriums.

In the tables below, the ZeroOcc column contains the number of atoms modelled with zero occupancy, the AltConf column contains the number of residues with at least one atom in alternate conformation and the Trace column contains the number of residues modelled with at most 2 atoms.

- Molecule 1 is a protein called POLIOVIRUS TYPE 1 MAHONEY.

Mol	Chain	Residues	Atoms				ZeroOcc	AltConf	Trace
1	0	5	Total	C	N	O	0	0	0
			29	15	5	9			

- Molecule 2 is a protein called POLIOVIRUS TYPE 1 MAHONEY.

Mol	Chain	Residues	Atoms					ZeroOcc	AltConf	Trace
2	1	283	Total	C	N	O	S	0	0	0
			2222	1416	378	423	5			

- Molecule 3 is a protein called POLIOVIRUS TYPE 1 MAHONEY.

Mol	Chain	Residues	Atoms					ZeroOcc	AltConf	Trace
3	2	268	Total	C	N	O	S	0	0	0
			2085	1317	358	396	14			

- Molecule 4 is a protein called POLIOVIRUS TYPE 1 MAHONEY.

Mol	Chain	Residues	Atoms					ZeroOcc	AltConf	Trace
4	3	235	Total	C	N	O	S	0	0	0
			1834	1169	299	349	17			

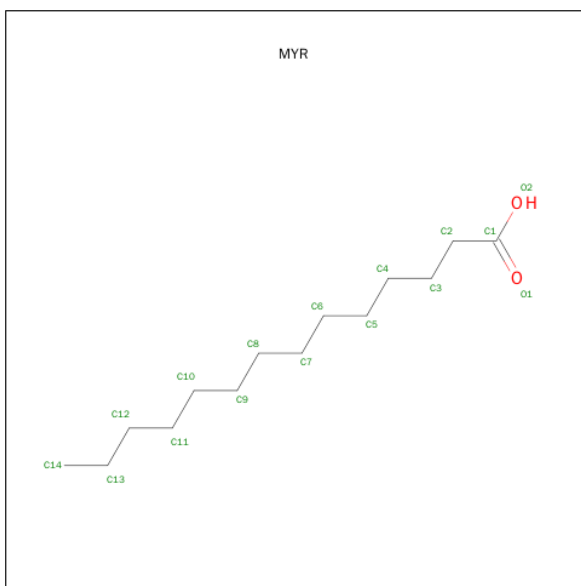
There is a discrepancy between the modelled and reference sequences:

Chain	Residue	Modelled	Actual	Comment	Reference
3	123	SER	PHE	CONFLICT	UNP P03300

- Molecule 5 is a protein called POLIOVIRUS TYPE 1 MAHONEY.

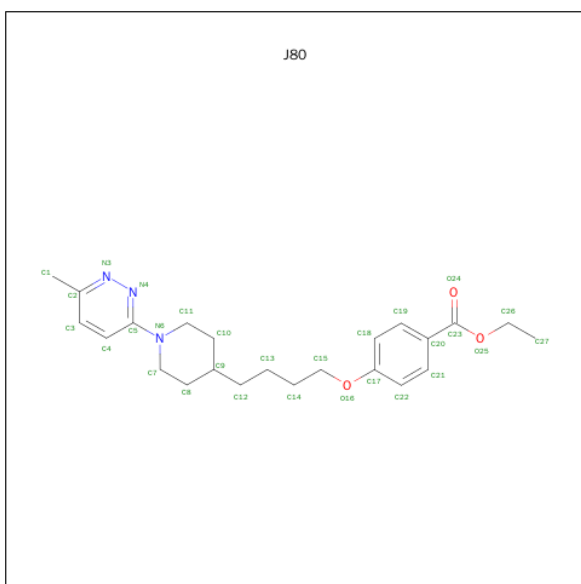
Mol	Chain	Residues	Atoms					ZeroOcc	AltConf	Trace
5	4	62	Total	C	N	O	S	0	0	0
			476	293	81	101	1			

- Molecule 6 is MYRISTIC ACID (three-letter code: MYR) (formula: $C_{14}H_{28}O_2$).



Mol	Chain	Residues	Atoms			ZeroOcc	AltConf
6	4	1	Total	C	O	0	0
			15	14	1		

- Molecule 7 is (METHYLPYRIDAZINE PIPERIDINE BUTYLOXYPHENYL)ETHYLACE TATE (three-letter code: J80) (formula: $C_{23}H_{31}N_3O_3$).

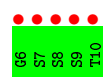


Mol	Chain	Residues	Atoms				ZeroOcc	AltConf
7	1	1	Total	C	N	O	0	0
			29	23	3	3		

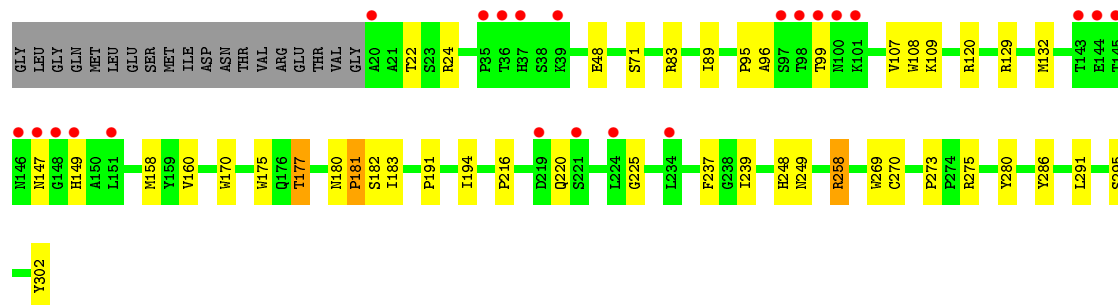
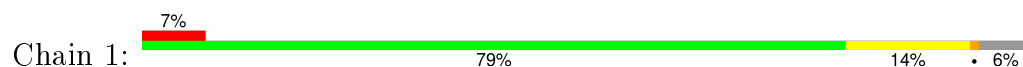
3 Residue-property plots [i](#)

These plots are drawn for all protein, RNA and DNA chains in the entry. The first graphic for a chain summarises the proportions of errors displayed in the second graphic. The second graphic shows the sequence view annotated by issues in geometry and electron density. Residues are color-coded according to the number of geometric quality criteria for which they contain at least one outlier: green = 0, yellow = 1, orange = 2 and red = 3 or more. A red dot above a residue indicates a poor fit to the electron density ($RSRZ > 2$). Stretches of 2 or more consecutive residues without any outlier are shown as a green connector. Residues present in the sample, but not in the model, are shown in grey.

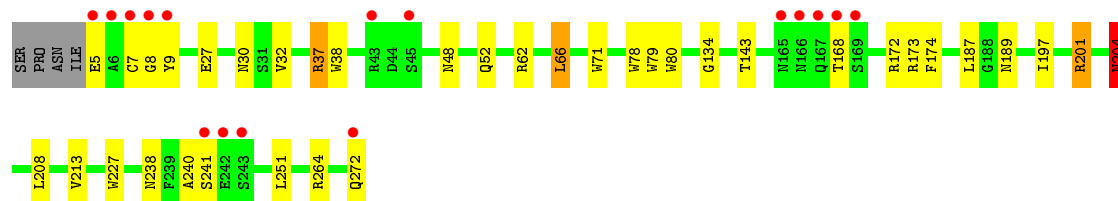
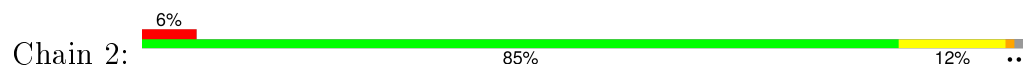
- Molecule 1: POLIOVIRUS TYPE 1 MAHONEY



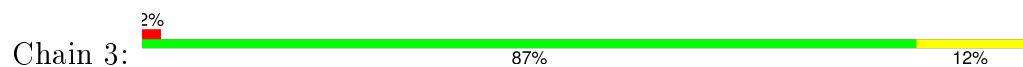
- Molecule 2: POLIOVirus TYPE 1 MAHONEY



- Molecule 3: POLIOVirus TYPE 1 MAHONEY

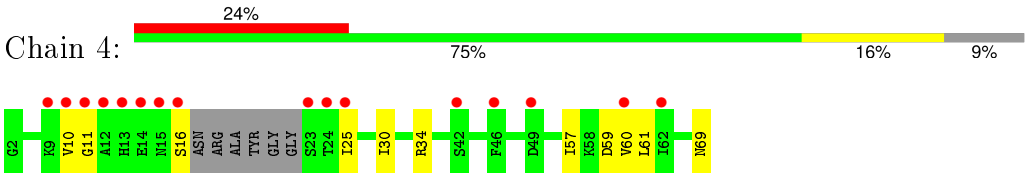


- Molecule 4: POLIOVirus TYPE 1 MAHONEY





● Molecule 5: POLIOVIRUS TYPE 1 MAHONEY



4 Data and refinement statistics

Property	Value	Source
Space group	P 21 21 2	Depositor
Cell constants a, b, c, α , β , γ	322.94Å 358.04Å 380.15Å 90.00° 90.00° 90.00°	Depositor
Resolution (Å)	(Not available) – 2.90 30.95 – 2.87	Depositor EDS
% Data completeness (in resolution range)	(Not available) ((Not available)-2.90) 31.7 (30.95-2.87)	Depositor EDS
R_{merge}	0.16	Depositor
R_{sym}	(Not available)	Depositor
$\langle I/\sigma(I) \rangle$ ¹	1.68 (at 2.85Å)	Xtriage
Refinement program	X-PLOR	Depositor
R, R_{free}	0.241 , (Not available) 0.218 , (Not available)	Depositor DCC
R_{free} test set	No test flags present.	DCC
Wilson B-factor (Å ²)	29.5	Xtriage
Anisotropy	0.084	Xtriage
Bulk solvent k_{sol} (e/Å ³), B_{sol} (Å ²)	0.31 , 62.6	EDS
Estimated twinning fraction	No twinning to report.	Xtriage
L-test for twinning ²	$\langle L \rangle = 0.47$, $\langle L^2 \rangle = 0.30$	Xtriage
Outliers	0 of 343402 reflections	Xtriage
F_o, F_c correlation	0.17	EDS
Total number of atoms	6690	wwPDB-VP
Average B, all atoms (Å ²)	15.0	wwPDB-VP

Xtriage's analysis on translational NCS is as follows: *The largest off-origin peak in the Patterson function is 3.13% of the height of the origin peak. No significant pseudotranslation is detected.*

¹Intensities estimated from amplitudes.

²Theoretical values of $\langle |L| \rangle$, $\langle L^2 \rangle$ for acentric reflections are 0.5, 0.375 respectively for untwinned datasets, and 0.333, 0.2 for perfectly twinned datasets.

5 Model quality ⓘ

5.1 Standard geometry ⓘ

Bond lengths and bond angles in the following residue types are not validated in this section: J80, MYR

The Z score for a bond length (or angle) is the number of standard deviations the observed value is removed from the expected value. A bond length (or angle) with $|Z| > 5$ is considered an outlier worth inspection. RMSZ is the root-mean-square of all Z scores of the bond lengths (or angles).

Mol	Chain	Bond lengths		Bond angles	
		RMSZ	# Z >5	RMSZ	# Z >5
1	0	0.88	0/28	1.62	0/36
2	1	0.76	0/2285	1.39	16/3124 (0.5%)
3	2	0.77	0/2142	1.45	26/2928 (0.9%)
4	3	0.76	0/1881	1.32	12/2562 (0.5%)
5	4	0.75	0/483	1.43	2/651 (0.3%)
All	All	0.76	0/6819	1.39	56/9301 (0.6%)

There are no bond length outliers.

All (56) bond angle outliers are listed below:

Mol	Chain	Res	Type	Atoms	Z	Observed(°)	Ideal(°)
2	1	269	TRP	CD1-CG-CD2	9.20	113.66	106.30
3	2	227	TRP	CD1-CG-CD2	9.00	113.50	106.30
3	2	38	TRP	CD1-CG-CD2	8.72	113.28	106.30
3	2	78	TRP	CD1-CG-CD2	8.71	113.27	106.30
4	3	110	TRP	CD1-CG-CD2	8.47	113.08	106.30
3	2	79	TRP	CD1-CG-CD2	8.25	112.90	106.30
2	1	269	TRP	CE2-CD2-CG	-8.03	100.88	107.30
4	3	110	TRP	CE2-CD2-CG	-8.01	100.89	107.30
2	1	175	TRP	CD1-CG-CD2	7.99	112.69	106.30
3	2	80	TRP	CD1-CG-CD2	7.98	112.68	106.30
3	2	80	TRP	CE2-CD2-CG	-7.92	100.96	107.30
3	2	227	TRP	CE2-CD2-CG	-7.92	100.97	107.30
4	3	170	TRP	CE2-CD2-CG	-7.91	100.97	107.30
3	2	71	TRP	CD1-CG-CD2	7.80	112.54	106.30
3	2	71	TRP	CE2-CD2-CG	-7.79	101.07	107.30
3	2	78	TRP	CE2-CD2-CG	-7.74	101.11	107.30
2	1	170	TRP	CD1-CG-CD2	7.71	112.47	106.30
4	3	170	TRP	CD1-CG-CD2	7.64	112.41	106.30
2	1	175	TRP	CE2-CD2-CG	-7.57	101.25	107.30

Continued on next page...

Continued from previous page...

Mol	Chain	Res	Type	Atoms	Z	Observed(°)	Ideal(°)
3	2	38	TRP	CE2-CD2-CG	-7.55	101.26	107.30
2	1	108	TRP	CD1-CG-CD2	7.38	112.21	106.30
2	1	108	TRP	CE2-CD2-CG	-7.37	101.41	107.30
2	1	170	TRP	CE2-CD2-CG	-7.15	101.58	107.30
3	2	79	TRP	CE2-CD2-CG	-6.99	101.71	107.30
2	1	275	ARG	NE-CZ-NH1	6.81	123.70	120.30
4	3	156	TRP	CD1-CG-CD2	6.76	111.71	106.30
4	3	226	ARG	NE-CZ-NH1	6.59	123.60	120.30
4	3	156	TRP	CE2-CD2-CG	-6.59	102.03	107.30
2	1	120	ARG	NE-CZ-NH1	6.51	123.56	120.30
2	1	258	ARG	NE-CZ-NH1	6.44	123.52	120.30
4	3	226	ARG	NE-CZ-NH2	-6.43	117.08	120.30
3	2	204	ASN	CB-CA-C	-6.39	97.62	110.40
3	2	172	ARG	NE-CZ-NH1	6.20	123.40	120.30
5	4	34	ARG	NE-CZ-NH2	-6.07	117.27	120.30
2	1	269	TRP	CB-CG-CD1	-5.91	119.32	127.00
3	2	37	ARG	NE-CZ-NH1	5.85	123.22	120.30
4	3	170	TRP	CG-CD2-CE3	5.83	139.15	133.90
4	3	170	TRP	CB-CG-CD1	-5.72	119.56	127.00
3	2	79	TRP	CB-CG-CD1	-5.67	119.62	127.00
5	4	34	ARG	NE-CZ-NH1	5.67	123.14	120.30
3	2	8	GLY	O-C-N	-5.65	113.65	122.70
4	3	223	ARG	NE-CZ-NH2	-5.61	117.49	120.30
3	2	227	TRP	CG-CD2-CE3	5.53	138.87	133.90
3	2	227	TRP	CG-CD1-NE1	-5.48	104.62	110.10
2	1	280	TYR	CB-CG-CD2	-5.38	117.77	121.00
4	3	110	TRP	CG-CD2-CE3	5.35	138.72	133.90
2	1	129	ARG	NE-CZ-NH1	5.34	122.97	120.30
2	1	269	TRP	CG-CD1-NE1	-5.32	104.78	110.10
3	2	8	GLY	N-CA-C	5.25	126.21	113.10
3	2	38	TRP	CG-CD1-NE1	-5.21	104.89	110.10
2	1	175	TRP	CG-CD1-NE1	-5.18	104.92	110.10
3	2	78	TRP	CG-CD1-NE1	-5.15	104.95	110.10
3	2	79	TRP	CG-CD1-NE1	-5.12	104.98	110.10
3	2	62	ARG	NE-CZ-NH2	-5.10	117.75	120.30
3	2	78	TRP	CB-CG-CD1	-5.10	120.37	127.00
3	2	71	TRP	CG-CD2-CE3	5.06	138.45	133.90

There are no chirality outliers.

There are no planarity outliers.

5.2 Too-close contacts ⓘ

In the following table, the Non-H and H(model) columns list the number of non-hydrogen atoms and hydrogen atoms in the chain respectively. The H(added) column lists the number of hydrogen atoms added and optimized by MolProbity. The Clashes column lists the number of clashes within the asymmetric unit, whereas Symm-Clashes lists symmetry related clashes.

Mol	Chain	Non-H	H(model)	H(added)	Clashes	Symm-Clashes
1	0	29	0	24	0	0
2	1	2222	0	2173	20	0
3	2	2085	0	2000	14	0
4	3	1834	0	1816	13	0
5	4	476	0	457	4	0
6	4	15	0	27	1	0
7	1	29	0	31	3	0
All	All	6690	0	6528	43	0

The all-atom clashscore is defined as the number of clashes found per 1000 atoms (including hydrogen atoms). The all-atom clashscore for this structure is 3.

All (43) close contacts within the same asymmetric unit are listed below, sorted by their clash magnitude.

Atom-1	Atom-2	Interatomic distance (Å)	Clash overlap (Å)
2:1:158:MET:SD	2:1:177:THR:HG23	2.29	0.71
2:1:177:THR:HG22	2:1:180:ASN:HB2	1.74	0.70
4:3:51:THR:HG21	4:3:99:MET:H	1.61	0.65
3:2:143:THR:HG23	3:2:173:ARG:HA	1.82	0.60
3:2:37:ARG:HG3	4:3:37:PRO:HB3	1.85	0.58
2:1:177:THR:HG21	2:1:182:SER:OG	2.04	0.57
2:1:183:ILE:HG13	7:1:0:J80:H12	1.85	0.57
3:2:213:VAL:HG22	4:3:37:PRO:HG2	1.86	0.55
3:2:30:ASN:HD21	5:4:59:ASP:HB2	1.70	0.55
2:1:191:PRO:HG2	4:3:13:TYR:HB2	1.90	0.53
2:1:109:LYS:HA	2:1:239:ILE:HG22	1.91	0.52
5:4:10:VAL:HG21	5:4:25:ILE:HD12	1.91	0.52
2:1:22:THR:HG22	2:1:24:ARG:H	1.75	0.52
2:1:107:VAL:HG13	2:1:239:ILE:HD13	1.92	0.51
4:3:87:LEU:HD11	4:3:114:LEU:HD12	1.93	0.49
2:1:48:GLU:HA	3:2:197:ILE:HB	1.94	0.49
4:3:120:PHE:HA	4:3:210:ILE:HG22	1.94	0.49
4:3:167:VAL:O	4:3:169:PRO:HD3	2.12	0.48
5:4:30:ILE:HD13	6:4:1:MYR:H72	1.95	0.48
3:2:5:GLU:HB3	3:2:9:TYR:H	1.78	0.48

Continued on next page...

Continued from previous page...

Atom-1	Atom-2	Interatomic distance (Å)	Clash overlap (Å)
5:4:57:ILE:HD11	5:4:61:LEU:HB3	1.96	0.48
2:1:273:PRO:HB3	3:2:189:ASN:HB2	1.96	0.48
2:1:96:ALA:HA	2:1:249:ASN:O	2.14	0.47
2:1:237:PHE:HB3	7:1:0:J80:H132	1.95	0.47
4:3:61:LYS:HD3	4:3:66:GLU:HB3	1.98	0.46
4:3:55:PHE:HE2	4:3:212:GLY:HA3	1.82	0.45
3:2:5:GLU:HG3	3:2:7:CYS:H	1.81	0.45
4:3:53:ILE:HD11	4:3:214:VAL:HB	1.99	0.45
3:2:32:VAL:HB	3:2:208:LEU:HD23	1.99	0.44
2:1:181:PRO:HB2	7:1:0:J80:H3	1.98	0.44
3:2:27:GLU:HB2	3:2:204:ASN:OD1	2.18	0.43
3:2:187:LEU:HD22	4:3:65:MET:CE	2.49	0.43
2:1:160:VAL:HB	2:1:239:ILE:HG13	2.01	0.42
4:3:64:THR:O	4:3:67:MET:HG2	2.19	0.42
2:1:302:TYR:CE1	4:3:189:TYR:HB3	2.55	0.42
2:1:24:ARG:HA	2:1:71:SER:OG	2.20	0.42
2:1:286:TYR:HB2	2:1:291:LEU:HD21	2.02	0.42
2:1:216:PRO:HA	2:1:225:GLY:HA3	2.02	0.42
3:2:66:LEU:HD12	3:2:251:LEU:HD23	2.02	0.41
2:1:89:ILE:HG12	2:1:258:ARG:HG2	2.02	0.41
3:2:201:ARG:HH11	3:2:201:ARG:HD3	1.77	0.40
2:1:95:PRO:O	2:1:248:HIS:HB3	2.21	0.40
3:2:134:GLY:HA2	3:2:174:PHE:HA	2.04	0.40

There are no symmetry-related clashes.

5.3 Torsion angles [i](#)

5.3.1 Protein backbone [i](#)

In the following table, the Percentiles column shows the percent Ramachandran outliers of the chain as a percentile score with respect to all X-ray entries followed by that with respect to entries of similar resolution.

The Analysed column shows the number of residues for which the backbone conformation was analysed, and the total number of residues.

Mol	Chain	Analysed	Favoured	Allowed	Outliers	Percentiles	
1	0	3/5 (60%)	3 (100%)	0	0	100	100
2	1	281/302 (93%)	268 (95%)	12 (4%)	1 (0%)	39	74

Continued on next page...

Continued from previous page...

Mol	Chain	Analysed	Favoured	Allowed	Outliers	Percentiles	
3	2	266/272 (98%)	248 (93%)	16 (6%)	2 (1%)	24	60
4	3	233/238 (98%)	220 (94%)	13 (6%)	0	100	100
5	4	58/68 (85%)	52 (90%)	4 (7%)	2 (3%)	5	19
All	All	841/885 (95%)	791 (94%)	45 (5%)	5 (1%)	30	67

All (5) Ramachandran outliers are listed below:

Mol	Chain	Res	Type
3	2	240	ALA
3	2	48	ASN
5	4	11	GLY
2	1	270	CYS
5	4	60	VAL

5.3.2 Protein sidechains ⓘ

In the following table, the Percentiles column shows the percent sidechain outliers of the chain as a percentile score with respect to all X-ray entries followed by that with respect to entries of similar resolution.

The Analysed column shows the number of residues for which the sidechain conformation was analysed, and the total number of residues.

Mol	Chain	Analysed	Rotameric	Outliers	Percentiles	
1	0	4/4 (100%)	4 (100%)	0	100	100
2	1	245/261 (94%)	235 (96%)	10 (4%)	37	73
3	2	228/232 (98%)	219 (96%)	9 (4%)	39	75
4	3	210/212 (99%)	205 (98%)	5 (2%)	57	86
5	4	54/57 (95%)	52 (96%)	2 (4%)	41	77
All	All	741/766 (97%)	715 (96%)	26 (4%)	43	78

All (26) residues with a non-rotameric sidechain are listed below:

Mol	Chain	Res	Type
2	1	83	ARG
2	1	99	THR
2	1	132	MET
2	1	147	ASN
2	1	149	HIS

Continued on next page...

Continued from previous page...

Mol	Chain	Res	Type
2	1	177	THR
2	1	181	PRO
2	1	194	ILE
2	1	220	GLN
2	1	295	SER
3	2	52	GLN
3	2	66	LEU
3	2	168	THR
3	2	201	ARG
3	2	204	ASN
3	2	238	ASN
3	2	241	SER
3	2	264	ARG
3	2	272	GLN
4	3	51	THR
4	3	85	LEU
4	3	163	SER
4	3	208	MET
4	3	218	ASN
5	4	16	SER
5	4	69	ASN

Some sidechains can be flipped to improve hydrogen bonding and reduce clashes. All (3) such sidechains are listed below:

Mol	Chain	Res	Type
2	1	100	ASN
4	3	6	ASN
4	3	218	ASN

5.3.3 RNA ⓘ

There are no RNA molecules in this entry.

5.4 Non-standard residues in protein, DNA, RNA chains ⓘ

There are no non-standard protein/DNA/RNA residues in this entry.

5.5 Carbohydrates ⓘ

There are no carbohydrates in this entry.

5.6 Ligand geometry

2 ligands are modelled in this entry.

In the following table, the Counts columns list the number of bonds (or angles) for which Mogul statistics could be retrieved, the number of bonds (or angles) that are observed in the model and the number of bonds (or angles) that are defined in the chemical component dictionary. The Link column lists molecule types, if any, to which the group is linked. The Z score for a bond length (or angle) is the number of standard deviations the observed value is removed from the expected value. A bond length (or angle) with $|Z| > 2$ is considered an outlier worth inspection. RMSZ is the root-mean-square of all Z scores of the bond lengths (or angles).

Mol	Type	Chain	Res	Link	Bond lengths			Bond angles		
					Counts	RMSZ	$\# Z > 2$	Counts	RMSZ	$\# Z > 2$
7	J80	1	0	-	30,31,31	1.51	2 (6%)	37,40,40	2.14	10 (27%)
6	MYR	4	1	5	14,14,15	0.34	0	12,13,15	0.56	0

In the following table, the Chirals column lists the number of chiral outliers, the number of chiral centers analysed, the number of these observed in the model and the number defined in the chemical component dictionary. Similar counts are reported in the Torsion and Rings columns. '-' means no outliers of that kind were identified.

Mol	Type	Chain	Res	Link	Chirals	Torsions	Rings
7	J80	1	0	-	-	0/19/29/29	0/3/3/3
6	MYR	4	1	5	-	0/11/12/13	0/0/0/0

All (2) bond length outliers are listed below:

Mol	Chain	Res	Type	Atoms	Z	Observed(Å)	Ideal(Å)
7	1	0	J80	C20-C23	-4.69	1.38	1.49
7	1	0	J80	O25-C23	5.35	1.46	1.33

All (10) bond angle outliers are listed below:

Mol	Chain	Res	Type	Atoms	Z	Observed(°)	Ideal(°)
7	1	0	J80	C4-C5-N4	-4.38	116.59	123.64
7	1	0	J80	C13-C14-C15	-2.48	102.41	113.47
7	1	0	J80	C3-C4-C5	2.27	120.78	117.57
7	1	0	J80	O25-C23-C20	2.90	117.17	112.18
7	1	0	J80	C8-C7-N6	2.95	116.63	111.01
7	1	0	J80	N4-C5-N6	4.01	121.74	117.23
7	1	0	J80	C7-C8-C9	4.52	119.37	111.73
7	1	0	J80	C5-N4-N3	4.55	123.46	119.12
7	1	0	J80	O25-C26-C27	4.63	125.82	108.42
7	1	0	J80	C11-N6-C7	5.02	122.14	111.59

There are no chirality outliers.

There are no torsion outliers.

There are no ring outliers.

2 monomers are involved in 4 short contacts:

Mol	Chain	Res	Type	Clashes	Symm-Clashes
7	1	0	J80	3	0
6	4	1	MYR	1	0

5.7 Other polymers [i](#)

There are no such residues in this entry.

5.8 Polymer linkage issues [i](#)

There are no chain breaks in this entry.

6 Fit of model and data ⓘ

6.1 Protein, DNA and RNA chains ⓘ

In the following table, the column labelled ‘#RSRZ> 2’ contains the number (and percentage) of RSRZ outliers, followed by percent RSRZ outliers for the chain as percentile scores relative to all X-ray entries and entries of similar resolution. The OWAB column contains the minimum, median, 95th percentile and maximum values of the occupancy-weighted average B-factor per residue. The column labelled ‘Q< 0.9’ lists the number of (and percentage) of residues with an average occupancy less than 0.9.

Mol	Chain	Analysed	<RSRZ>	#RSRZ>2	OWAB(Å ²)	Q<0.9
1	0	5/5 (100%)	7.94	5 (100%) 0 0	87, 88, 89, 91	0
2	1	283/302 (93%)	0.01	22 (7%) 16 10	3, 12, 51, 83	0
3	2	268/272 (98%)	-0.13	16 (5%) 25 18	3, 9, 48, 95	0
4	3	235/238 (98%)	-0.34	5 (2%) 67 62	4, 9, 22, 66	0
5	4	62/68 (91%)	1.34	16 (25%) 1 0	7, 28, 74, 96	0
All	All	853/885 (96%)	0.01	64 (7%) 17 11	3, 10, 52, 96	0

All (64) RSRZ outliers are listed below:

Mol	Chain	Res	Type	RSRZ
1	0	6	GLY	15.5
5	4	16	SER	14.8
5	4	23	SER	11.7
5	4	15	ASN	10.0
2	1	20	ALA	9.9
1	0	10	THR	7.9
2	1	145	THR	7.1
2	1	100	ASN	7.1
5	4	24	THR	6.7
4	3	235	ALA	6.7
1	0	7	SER	6.6
3	2	6	ALA	6.5
3	2	5	GLU	6.3
2	1	147	ASN	6.2
2	1	98	THR	6.1
3	2	167	GLN	5.9
3	2	7	CYS	5.4
3	2	9	TYR	5.2
1	0	9	SER	5.1
3	2	168	THR	4.8

Continued on next page...

Continued from previous page...

Mol	Chain	Res	Type	RSRZ
1	0	8	SER	4.7
2	1	99	THR	4.6
2	1	101	LYS	4.6
5	4	12	ALA	4.1
2	1	146	ASN	4.0
5	4	11	GLY	4.0
2	1	149	HIS	3.6
2	1	144	GLU	3.5
2	1	219	ASP	3.5
3	2	8	GLY	3.4
3	2	272	GLN	3.4
3	2	243	SER	3.3
5	4	62	ILE	3.2
4	3	234	LYS	3.2
4	3	1	GLY	3.2
5	4	60	VAL	3.1
2	1	36	THR	3.1
4	3	2	LEU	3.1
2	1	224	LEU	3.0
5	4	9	LYS	3.0
2	1	97	SER	2.9
5	4	25	ILE	2.9
2	1	39	LYS	2.9
5	4	14	GLU	2.7
2	1	37	HIS	2.7
3	2	166	ASN	2.6
3	2	165	ASN	2.6
2	1	221	SER	2.6
3	2	242	GLU	2.5
5	4	46	PHE	2.5
5	4	10	VAL	2.5
2	1	234	LEU	2.4
2	1	148	GLY	2.4
5	4	13	HIS	2.4
3	2	45	SER	2.3
2	1	151	LEU	2.3
4	3	7	THR	2.1
5	4	42	SER	2.1
3	2	169	SER	2.0
5	4	49	ASP	2.0
2	1	35	PRO	2.0
3	2	43	ARG	2.0

Continued on next page...

Continued from previous page...

Mol	Chain	Res	Type	RSRZ
2	1	143	THR	2.0
3	2	241	SER	2.0

6.2 Non-standard residues in protein, DNA, RNA chains [i](#)

There are no non-standard protein/DNA/RNA residues in this entry.

6.3 Carbohydrates [i](#)

There are no carbohydrates in this entry.

6.4 Ligands [i](#)

In the following table, the Atoms column lists the number of modelled atoms in the group and the number defined in the chemical component dictionary. LLDF column lists the quality of electron density of the group with respect to its neighbouring residues in protein, DNA or RNA chains. The B-factors column lists the minimum, median, 95th percentile and maximum values of B factors of atoms in the group. The column labelled 'Q< 0.9' lists the number of atoms with occupancy less than 0.9.

Mol	Type	Chain	Res	Atoms	RSCC	RSR	LLDF	B-factors(\AA^2)	Q<0.9
7	J80	1	0	29/29	0.96	0.19	1.62	23,28,58,62	0
6	MYR	4	1	15/16	0.93	0.99	-	34,49,60,61	0

6.5 Other polymers [i](#)

There are no such residues in this entry.