



Full wwPDB X-ray Structure Validation Report ⓘ

Jan 31, 2016 – 09:34 PM GMT

PDB ID : 1POE
Title : STRUCTURES OF FREE AND INHIBITED HUMAN SECRETORY PHOS-
PHOLIPASE A2 FROM INFLAMMATORY EXUDATE
Authors : Scott, D.L.; White, S.P.; Sigler, P.B.
Deposited on : 1992-09-07
Resolution : 2.10 Å(reported)

This is a Full wwPDB X-ray Structure Validation Report for a publicly released PDB entry.
We welcome your comments at validation@mail.wwpdb.org
A user guide is available at
<http://wwpdb.org/validation/2016/XrayValidationReportHelp>
with specific help available everywhere you see the ⓘ symbol.

The following versions of software and data (see [references ⓘ](#)) were used in the production of this report:

MolProbity : 4.02b-467
Mogul : 1.7 (RC4), CSD as536be (2015)
Xtriage (Phenix) : **NOT EXECUTED**
EDS : **NOT EXECUTED**
Percentile statistics : 20151230.v01 (using entries in the PDB archive December 30th 2015)
Ideal geometry (proteins) : Engh & Huber (2001)
Ideal geometry (DNA, RNA) : Parkinson et al. (1996)
Validation Pipeline (wwPDB-VP) : trunk26865

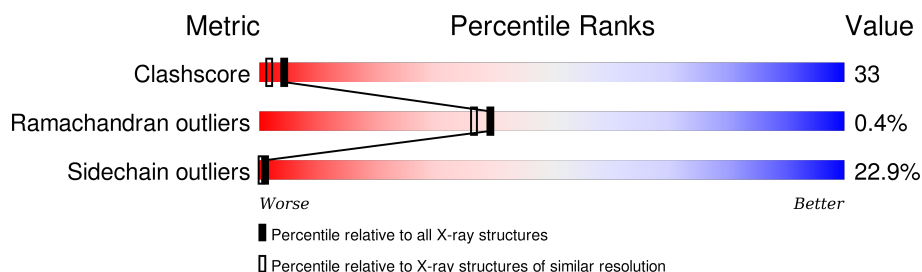
1 Overall quality at a glance

The following experimental techniques were used to determine the structure:

X-RAY DIFFRACTION

The reported resolution of this entry is 2.10 Å.


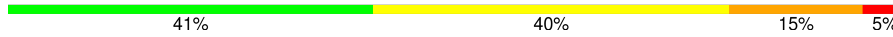
Percentile scores (ranging between 0-100) for global validation metrics of the entry are shown in the following graphic. The table shows the number of entries on which the scores are based.



Metric	Whole archive (#Entries)	Similar resolution (#Entries, resolution range(Å))
Clashscore	102246	4460 (2.10-2.10)
Ramachandran outliers	100387	4413 (2.10-2.10)
Sidechain outliers	100360	4414 (2.10-2.10)

The table below summarises the geometric issues observed across the polymeric chains and their fit to the electron density. The red, orange, yellow and green segments on the lower bar indicate the fraction of residues that contain outliers for ≥ 3 , 2, 1 and 0 types of geometric quality criteria. A grey segment represents the fraction of residues that are not modelled. The numeric value for each fraction is indicated below the corresponding segment, with a dot representing fractions $\leq 5\%$. The upper red bar (where present) indicates the fraction of residues that have poor fit to the electron density. The numeric value is given above the bar.

Note EDS was not executed.

Mol	Chain	Length	Quality of chain
1	A	124	 52% 32% 12% •
1	B	124	 41% 40% 15% 5%

2 Entry composition [i](#)

There are 4 unique types of molecules in this entry. The entry contains 2312 atoms, of which 0 are hydrogens and 0 are deuteriums.

In the tables below, the ZeroOcc column contains the number of atoms modelled with zero occupancy, the AltConf column contains the number of residues with at least one atom in alternate conformation and the Trace column contains the number of residues modelled with at most 2 atoms.

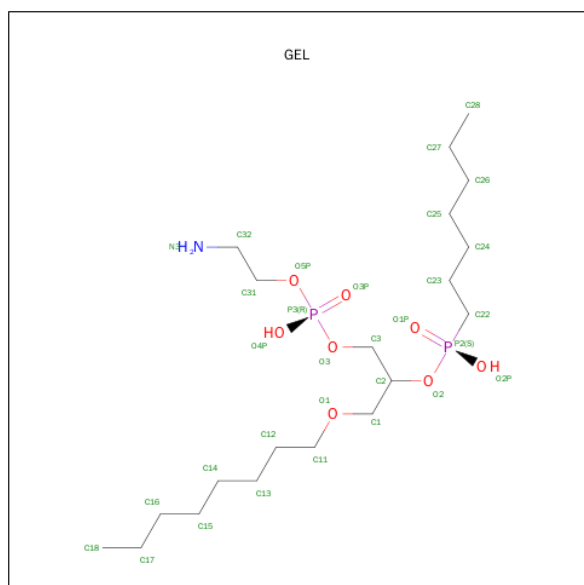
- Molecule 1 is a protein called PHOSPHOLIPASE A2.

Mol	Chain	Residues	Atoms					ZeroOcc	AltConf	Trace
1	A	124	Total	C	N	O	S	0	0	0
			966	589	184	178	15			
1	B	124	Total	C	N	O	S	0	0	0
			966	589	184	178	15			

- Molecule 2 is CALCIUM ION (three-letter code: CA) (formula: Ca).

Mol	Chain	Residues	Atoms		ZeroOcc	AltConf
2	B	2	Total	Ca	0	0
			2	2		
2	A	2	Total	Ca	0	0
			2	2		

- Molecule 3 is 1-O-OCTYL-2-HEPTYLPHOSPHONYL-SN-GLYCERO-3-PHOSPHOETHANOLAMINE (three-letter code: GEL) (formula: C₂₀H₄₅NO₈P₂).



Mol	Chain	Residues	Atoms					ZeroOcc	AltConf
3	A	1	Total	C	N	O	P	0	0
			31	20	1	8	2		
3	B	1	Total	C	N	O	P	0	0
			31	20	1	8	2		

- Molecule 4 is water.

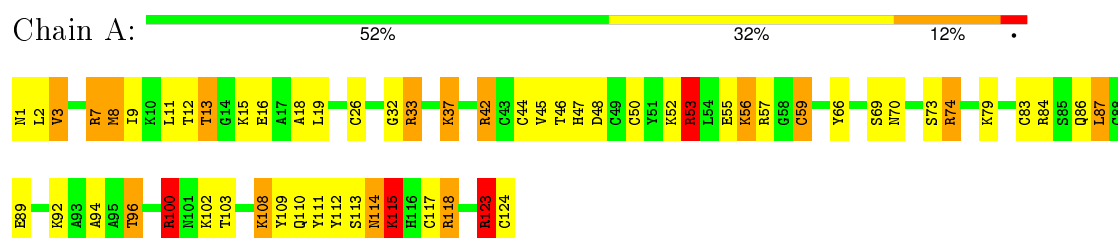
Mol	Chain	Residues	Atoms		ZeroOcc	AltConf
4	A	170	Total	O	0	0
			170	170		
4	B	144	Total	O	0	0
			144	144		

3 Residue-property plots

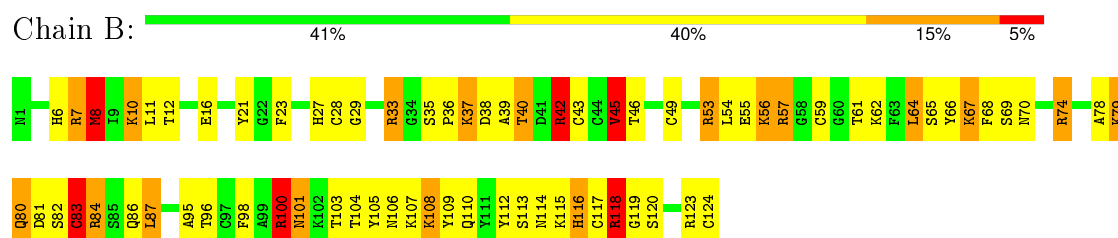
These plots are drawn for all protein, RNA and DNA chains in the entry. The first graphic for a chain summarises the proportions of errors displayed in the second graphic. The second graphic shows the sequence view annotated by issues in geometry and electron density. Residues are color-coded according to the number of geometric quality criteria for which they contain at least one outlier: green = 0, yellow = 1, orange = 2 and red = 3 or more. A red dot above a residue indicates a poor fit to the electron density ($RSRZ > 2$). Stretches of 2 or more consecutive residues without any outlier are shown as a green connector. Residues present in the sample, but not in the model, are shown in grey.

Note EDS was not executed.

• Molecule 1: PHOSPHOLIPASE A2



• Molecule 1: PHOSPHOLIPASE A2



4 Data and refinement statistics

Xtriage (Phenix) and EDS were not executed - this section will therefore be incomplete.

Property	Value	Source
Space group	P 43 21 2	Depositor
Cell constants a, b, c, α , β , γ	76.30 Å 76.30 Å 115.30 Å 90.00° 90.00° 90.00°	Depositor
Resolution (Å)	(Not available) – 2.10	Depositor
% Data completeness (in resolution range)	(Not available) ((Not available)-2.10)	Depositor
R_{merge}	(Not available)	Depositor
R_{sym}	(Not available)	Depositor
Refinement program	X-PLOR	Depositor
R, R_{free}	0.196 , (Not available)	Depositor
Estimated twinning fraction	No twinning to report.	Xtriage
Total number of atoms	2312	wwPDB-VP
Average B, all atoms (Å ²)	22.0	wwPDB-VP

5 Model quality

5.1 Standard geometry

Bond lengths and bond angles in the following residue types are not validated in this section: CA, GEL

The Z score for a bond length (or angle) is the number of standard deviations the observed value is removed from the expected value. A bond length (or angle) with $|Z| > 5$ is considered an outlier worth inspection. RMSZ is the root-mean-square of all Z scores of the bond lengths (or angles).

Mol	Chain	Bond lengths		Bond angles	
		RMSZ	$\# Z > 5$	RMSZ	$\# Z > 5$
1	A	0.87	1/984 (0.1%)	1.71	20/1312 (1.5%)
1	B	1.07	3/984 (0.3%)	1.61	19/1312 (1.4%)
All	All	0.97	4/1968 (0.2%)	1.66	39/2624 (1.5%)

Chiral center outliers are detected by calculating the chiral volume of a chiral center and verifying if the center is modelled as a planar moiety or with the opposite hand. A planarity outlier is detected by checking planarity of atoms in a peptide group, atoms in a mainchain group or atoms of a sidechain that are expected to be planar.

Mol	Chain	#Chirality outliers	#Planarity outliers
1	B	1	0

All (4) bond length outliers are listed below:

Mol	Chain	Res	Type	Atoms	Z	Observed(Å)	Ideal(Å)
1	B	83	CYS	CB-SG	15.43	2.08	1.82
1	B	45	VAL	CA-CB	-11.54	1.30	1.54
1	B	45	VAL	CA-C	8.96	1.76	1.52
1	A	44	CYS	CB-SG	6.50	1.93	1.82

All (39) bond angle outliers are listed below:

Mol	Chain	Res	Type	Atoms	Z	Observed(°)	Ideal(°)
1	A	53	ARG	CD-NE-CZ	24.73	158.23	123.60
1	B	45	VAL	CA-CB-CG1	21.98	143.87	110.90
1	A	59	CYS	CA-CB-SG	21.79	153.22	114.00
1	B	83	CYS	N-CA-CB	19.10	144.98	110.60
1	A	37	LYS	CG-CD-CE	17.83	165.40	111.90
1	A	53	ARG	CG-CD-NE	-13.55	83.34	111.80
1	B	45	VAL	CB-CA-C	12.50	135.15	111.40

Continued on next page...

Continued from previous page...

Mol	Chain	Res	Type	Atoms	Z	Observed(°)	Ideal(°)
1	B	100	ARG	NE-CZ-NH1	8.49	124.55	120.30
1	A	123	ARG	NE-CZ-NH1	8.33	124.47	120.30
1	B	53	ARG	NE-CZ-NH2	8.30	124.45	120.30
1	B	45	VAL	CG1-CB-CG2	-8.15	97.86	110.90
1	A	123	ARG	N-CA-CB	8.12	125.22	110.60
1	B	100	ARG	CD-NE-CZ	7.70	134.38	123.60
1	A	53	ARG	NE-CZ-NH2	7.60	124.10	120.30
1	A	57	ARG	NE-CZ-NH2	7.43	124.01	120.30
1	A	7	ARG	NE-CZ-NH2	7.38	123.99	120.30
1	A	118	ARG	NE-CZ-NH2	7.38	123.99	120.30
1	A	42	ARG	NE-CZ-NH2	7.26	123.93	120.30
1	B	74	ARG	NE-CZ-NH2	7.22	123.91	120.30
1	B	84	ARG	NE-CZ-NH2	6.87	123.73	120.30
1	A	33	ARG	NE-CZ-NH2	6.85	123.72	120.30
1	B	123	ARG	NE-CZ-NH2	6.84	123.72	120.30
1	A	84	ARG	NE-CZ-NH2	6.81	123.71	120.30
1	B	42	ARG	NE-CZ-NH2	6.79	123.69	120.30
1	B	118	ARG	NE-CZ-NH2	6.62	123.61	120.30
1	A	115	LYS	O-C-N	6.61	133.28	122.70
1	B	57	ARG	NE-CZ-NH2	6.58	123.59	120.30
1	B	33	ARG	NE-CZ-NH2	6.43	123.52	120.30
1	B	8	MET	CG-SD-CE	6.33	110.34	100.20
1	A	8	MET	CG-SD-CE	5.95	109.73	100.20
1	A	74	ARG	NE-CZ-NH2	5.83	123.22	120.30
1	A	123	ARG	NH1-CZ-NH2	-5.72	113.11	119.40
1	B	100	ARG	NH1-CZ-NH2	-5.60	113.24	119.40
1	B	45	VAL	N-CA-CB	5.47	123.54	111.50
1	B	7	ARG	NE-CZ-NH2	5.43	123.02	120.30
1	A	123	ARG	CD-NE-CZ	5.41	131.17	123.60
1	A	100	ARG	NE-CZ-NH2	5.31	122.96	120.30
1	A	114	ASN	CB-CA-C	-5.20	100.01	110.40
1	B	45	VAL	N-CA-C	-5.05	97.35	111.00

All (1) chirality outliers are listed below:

Mol	Chain	Res	Type	Atom
1	B	83	CYS	CA

There are no planarity outliers.

5.2 Too-close contacts ⓘ

In the following table, the Non-H and H(model) columns list the number of non-hydrogen atoms and hydrogen atoms in the chain respectively. The H(added) column lists the number of hydrogen atoms added and optimized by MolProbity. The Clashes column lists the number of clashes within the asymmetric unit, whereas Symm-Clashes lists symmetry related clashes.

Mol	Chain	Non-H	H(model)	H(added)	Clashes	Symm-Clashes
1	A	966	0	935	63	1
1	B	966	0	932	64	1
2	A	2	0	0	0	0
2	B	2	0	0	0	0
3	A	31	0	43	3	0
3	B	31	0	43	3	0
4	A	170	0	0	19	2
4	B	144	0	0	15	3
All	All	2312	0	1953	129	4

The all-atom clashscore is defined as the number of clashes found per 1000 atoms (including hydrogen atoms). The all-atom clashscore for this structure is 33.

All (129) close contacts within the same asymmetric unit are listed below, sorted by their clash magnitude.

Atom-1	Atom-2	Interatomic distance (Å)	Clash overlap (Å)
1:B:45:VAL:CA	1:B:45:VAL:C	1.76	1.54
1:B:83:CYS:SG	1:B:83:CYS:CB	2.08	1.42
1:A:123:ARG:HD2	1:A:124:CYS:N	1.52	1.21
1:A:2:LEU:HB2	4:A:511:HOH:O	1.37	1.20
1:A:123:ARG:CD	1:A:124:CYS:H	1.59	1.14
1:A:37:LYS:HD3	1:A:112:TYR:HE2	1.17	1.09
1:A:53:ARG:NH2	4:A:431:HOH:O	1.88	1.06
1:A:114:ASN:HA	1:A:117:CYS:SG	1.97	1.02
1:A:108:LYS:HD2	4:A:525:HOH:O	1.65	0.95
1:B:95:ALA:HA	4:B:645:HOH:O	1.65	0.95
1:A:37:LYS:HD3	1:A:112:TYR:CE2	2.01	0.95
3:A:930:GEL:H152	4:A:536:HOH:O	1.69	0.93
1:A:55:GLU:OE2	4:A:402:HOH:O	1.86	0.91
1:A:33:ARG:NH2	4:A:530:HOH:O	2.03	0.90
1:A:13:THR:HG22	1:A:15:LYS:H	1.42	0.84
1:A:26:CYS:SG	1:A:117:CYS:HB3	2.20	0.81
1:B:39:ALA:HA	1:B:42:ARG:HD3	1.63	0.81
1:B:53:ARG:NH1	1:B:86:GLN:OE1	2.13	0.80
1:B:6:HIS:HD2	4:B:545:HOH:O	1.64	0.80

Continued on next page...

Continued from previous page...

Atom-1	Atom-2	Interatomic distance (Å)	Clash overlap (Å)
1:A:13:THR:CG2	1:A:15:LYS:H	1.96	0.77
1:B:100:ARG:HG2	4:B:487:HOH:O	1.85	0.77
1:B:104:THR:HB	4:B:638:HOH:O	1.86	0.76
1:B:62:LYS:NZ	3:B:935:GEL:O3P	2.17	0.76
1:A:13:THR:HG23	1:A:15:LYS:HG3	1.69	0.75
1:B:40:THR:HG23	4:B:638:HOH:O	1.87	0.75
1:A:26:CYS:SG	1:A:117:CYS:CB	2.75	0.74
1:B:40:THR:CG2	4:B:638:HOH:O	2.35	0.74
1:B:105:TYR:OH	1:B:110:GLN:HG3	1.87	0.74
1:A:103:THR:HG23	4:A:621:HOH:O	1.87	0.73
1:A:123:ARG:HD2	1:A:124:CYS:H	0.67	0.72
1:B:118:ARG:HG2	1:B:119:GLY:N	2.03	0.72
1:B:59:CYS:SG	1:B:83:CYS:CB	2.78	0.72
1:B:45:VAL:N	1:B:45:VAL:C	2.44	0.71
1:B:38:ASP:OD2	4:B:638:HOH:O	2.10	0.70
3:A:930:GEL:H172	4:A:442:HOH:O	1.91	0.70
1:B:45:VAL:CA	1:B:46:THR:N	2.54	0.69
1:A:108:LYS:CD	4:A:525:HOH:O	2.31	0.68
1:A:7:ARG:HG3	4:A:513:HOH:O	1.93	0.67
1:A:89:GLU:HG3	4:A:610:HOH:O	1.95	0.66
1:A:108:LYS:CE	1:A:109:TYR:CE1	2.78	0.65
1:A:108:LYS:HE3	1:A:109:TYR:CE1	2.31	0.65
1:A:59:CYS:CB	1:A:83:CYS:HG	2.07	0.65
1:A:52:LYS:HE3	4:A:434:HOH:O	1.96	0.65
1:A:74:ARG:NH2	4:A:686:HOH:O	2.32	0.62
1:A:59:CYS:HB3	1:A:83:CYS:SG	2.39	0.62
1:B:83:CYS:SG	1:B:83:CYS:HA	2.40	0.61
1:A:16:GLU:OE2	1:A:18:ALA:HB3	2.01	0.61
1:A:1:ASN:OD1	1:A:3:VAL:HG13	2.02	0.60
1:A:59:CYS:CB	1:A:83:CYS:SG	2.90	0.60
1:A:37:LYS:CD	1:A:112:TYR:CE2	2.81	0.59
1:A:59:CYS:HG	1:A:83:CYS:HG	0.60	0.59
1:A:37:LYS:CD	1:A:112:TYR:HE2	2.05	0.58
1:B:100:ARG:NH1	4:B:487:HOH:O	2.19	0.58
1:B:67:LYS:H	1:B:79:LYS:HD2	1.68	0.57
1:B:79:LYS:HE3	1:B:80:GLN:H	1.70	0.57
1:A:56:LYS:HD3	4:A:537:HOH:O	2.04	0.57
1:A:2:LEU:HD12	4:A:511:HOH:O	2.05	0.55
1:A:92:LYS:O	1:A:96:THR:HB	2.07	0.55
1:B:59:CYS:SG	1:B:83:CYS:HB3	2.46	0.55
1:B:38:ASP:OD2	1:B:40:THR:HG23	2.06	0.55

Continued on next page...

Continued from previous page...

Atom-1	Atom-2	Interatomic distance (Å)	Clash overlap (Å)
1:B:27:HIS:CD2	1:B:45:VAL:HG12	2.41	0.55
1:B:49:CYS:CB	1:B:124:CYS:SG	2.96	0.54
1:A:26:CYS:O	1:A:32:GLY:HA2	2.08	0.54
1:A:48:ASP:O	3:A:930:GEL:H322	2.08	0.54
1:A:53:ARG:NH2	1:A:86:GLN:OE1	2.40	0.53
1:A:55:GLU:HG2	4:A:539:HOH:O	2.09	0.53
1:B:40:THR:O	1:B:43:CYS:HB2	2.08	0.53
1:B:7:ARG:NH1	1:B:68:PHE:CZ	2.78	0.52
1:B:104:THR:O	1:B:105:TYR:C	2.48	0.52
1:B:40:THR:HG22	4:B:638:HOH:O	2.04	0.52
1:A:100:ARG:NH2	4:A:690:HOH:O	2.30	0.52
1:A:13:THR:CG2	1:A:15:LYS:HB2	2.39	0.51
1:B:104:THR:HG21	4:B:595:HOH:O	2.10	0.51
1:B:57:ARG:HH22	1:B:82:SER:HB3	1.76	0.51
1:A:52:LYS:HE2	1:A:123:ARG:HH12	1.75	0.51
1:A:123:ARG:CZ	1:A:124:CYS:HB2	2.41	0.51
1:B:79:LYS:HE3	1:B:79:LYS:CA	2.41	0.51
1:B:8:MET:O	1:B:12:THR:HG23	2.11	0.50
1:A:47:HIS:CD2	1:A:94:ALA:HB2	2.46	0.50
1:A:108:LYS:HE2	1:A:109:TYR:CE1	2.47	0.50
1:B:21:TYR:O	1:B:28:CYS:HB3	2.12	0.50
1:B:6:HIS:HE1	1:B:16:GLU:OE2	1.95	0.50
1:B:29:GLY:HA2	3:B:935:GEL:H121	1.94	0.49
1:B:96:THR:O	1:B:100:ARG:HD3	2.13	0.49
1:B:55:GLU:O	4:B:725:HOH:O	2.20	0.48
1:B:118:ARG:CG	1:B:119:GLY:N	2.75	0.48
1:A:109:TYR:HA	1:A:112:TYR:HB2	1.94	0.48
1:A:9:ILE:O	1:A:13:THR:HB	2.13	0.48
1:B:7:ARG:HH21	1:B:70:ASN:HD22	1.62	0.47
1:B:64:LEU:HD13	1:B:84:ARG:HG2	1.97	0.47
1:B:114:ASN:HA	1:B:117:CYS:SG	2.55	0.47
1:B:109:TYR:HA	1:B:112:TYR:HB2	1.96	0.47
1:B:7:ARG:HH21	1:B:70:ASN:ND2	2.14	0.46
1:B:108:LYS:HD3	1:B:109:TYR:CE1	2.51	0.46
1:A:33:ARG:CZ	4:A:530:HOH:O	2.53	0.46
1:B:79:LYS:HE3	1:B:79:LYS:HA	1.97	0.46
1:B:33:ARG:NH2	1:B:117:CYS:O	2.50	0.45
1:B:6:HIS:CD2	4:B:545:HOH:O	2.50	0.45
1:A:13:THR:HG22	1:A:15:LYS:N	2.21	0.45
1:A:110:GLN:HG2	1:A:111:TYR:CD2	2.51	0.44
1:B:106:ASN:C	1:B:106:ASN:OD1	2.56	0.44

Continued on next page...

Continued from previous page...

Atom-1	Atom-2	Interatomic distance (Å)	Clash overlap (Å)
1:B:98:PHE:HB2	4:B:645:HOH:O	2.17	0.44
1:B:79:LYS:CE	1:B:80:GLN:H	2.31	0.44
1:A:108:LYS:HE3	1:A:109:TYR:CD1	2.53	0.44
1:A:13:THR:HG23	1:A:15:LYS:H	1.80	0.43
1:A:70:ASN:HA	1:A:74:ARG:O	2.18	0.43
1:B:39:ALA:HB1	1:B:101:ASN:ND2	2.32	0.43
1:B:100:ARG:HH11	1:B:100:ARG:HG2	1.82	0.43
1:A:13:THR:HG21	1:A:15:LYS:HB2	2.01	0.43
3:B:935:GEL:H152	4:B:499:HOH:O	2.18	0.43
1:A:108:LYS:HD2	1:A:108:LYS:O	2.18	0.42
1:B:11:LEU:HA	1:B:11:LEU:HD23	1.87	0.42
1:B:37:LYS:HA	1:B:37:LYS:HD2	1.46	0.42
1:B:7:ARG:CZ	1:B:68:PHE:CZ	3.02	0.42
1:B:80:GLN:HB3	1:B:81:ASP:H	1.52	0.42
1:A:56:LYS:O	1:B:10:LYS:HD3	2.19	0.42
1:A:2:LEU:CD1	4:A:511:HOH:O	2.66	0.41
1:B:35:SER:HA	1:B:36:PRO:HD3	1.95	0.41
1:B:100:ARG:HB3	1:B:101:ASN:OD1	2.20	0.41
1:B:56:LYS:HE3	1:B:56:LYS:HB3	1.29	0.41
1:B:61:THR:O	1:B:87:LEU:HD11	2.21	0.41
1:A:26:CYS:HB3	1:A:33:ARG:O	2.21	0.41
1:A:8:MET:O	1:A:12:THR:HG23	2.21	0.41
1:A:66:TYR:CD2	1:A:87:LEU:HD13	2.56	0.40
1:B:78:ALA:HB3	4:B:628:HOH:O	2.21	0.40
1:A:45:VAL:HG22	1:A:46:THR:N	2.36	0.40
1:A:13:THR:HG23	1:A:15:LYS:CG	2.44	0.40
1:A:123:ARG:HD2	1:A:124:CYS:CB	2.50	0.40
1:B:66:TYR:HB2	1:B:79:LYS:CD	2.51	0.40

All (4) symmetry-related close contacts are listed below. The label for Atom-2 includes the symmetry operator and encoded unit-cell translations to be applied.

Atom-1	Atom-2	Interatomic distance (Å)	Clash overlap (Å)
4:A:524:HOH:O	4:B:591:HOH:O[6_456]	0.14	2.06
4:B:642:HOH:O	4:B:642:HOH:O[8_666]	1.61	0.59
1:A:115:LYS:O	1:B:67:LYS:NZ[6_456]	1.90	0.30
4:A:673:HOH:O	4:B:561:HOH:O[7_546]	2.18	0.02

5.3 Torsion angles

5.3.1 Protein backbone

In the following table, the Percentiles column shows the percent Ramachandran outliers of the chain as a percentile score with respect to all X-ray entries followed by that with respect to entries of similar resolution.

The Analysed column shows the number of residues for which the backbone conformation was analysed, and the total number of residues.

Mol	Chain	Analysed	Favoured	Allowed	Outliers	Percentiles	
1	A	122/124 (98%)	116 (95%)	6 (5%)	0	100	100
1	B	122/124 (98%)	114 (93%)	7 (6%)	1 (1%)	24	17
All	All	244/248 (98%)	230 (94%)	13 (5%)	1 (0%)	39	37

All (1) Ramachandran outliers are listed below:

Mol	Chain	Res	Type
1	B	116	HIS

5.3.2 Protein sidechains

In the following table, the Percentiles column shows the percent sidechain outliers of the chain as a percentile score with respect to all X-ray entries followed by that with respect to entries of similar resolution.

The Analysed column shows the number of residues for which the sidechain conformation was analysed, and the total number of residues.

Mol	Chain	Analysed	Rotameric	Outliers	Percentiles	
1	A	105/105 (100%)	85 (81%)	20 (19%)	2	1
1	B	105/105 (100%)	77 (73%)	28 (27%)	0	0
All	All	210/210 (100%)	162 (77%)	48 (23%)	1	0

All (48) residues with a non-rotameric sidechain are listed below:

Mol	Chain	Res	Type
1	A	3	VAL
1	A	11	LEU
1	A	13	THR
1	A	19	LEU
1	A	42	ARG

Continued on next page...

Continued from previous page...

Mol	Chain	Res	Type
1	A	50	CYS
1	A	53	ARG
1	A	56	LYS
1	A	69	SER
1	A	73	SER
1	A	79	LYS
1	A	87	LEU
1	A	96	THR
1	A	100	ARG
1	A	102	LYS
1	A	108	LYS
1	A	113	SER
1	A	115	LYS
1	A	118	ARG
1	A	123	ARG
1	B	8	MET
1	B	10	LYS
1	B	23	PHE
1	B	37	LYS
1	B	40	THR
1	B	42	ARG
1	B	45	VAL
1	B	54	LEU
1	B	56	LYS
1	B	64	LEU
1	B	65	SER
1	B	67	LYS
1	B	69	SER
1	B	74	ARG
1	B	79	LYS
1	B	80	GLN
1	B	83	CYS
1	B	87	LEU
1	B	100	ARG
1	B	101	ASN
1	B	103	THR
1	B	107	LYS
1	B	108	LYS
1	B	113	SER
1	B	115	LYS
1	B	116	HIS
1	B	118	ARG

Continued on next page...

Continued from previous page...

Mol	Chain	Res	Type
1	B	120	SER

Some sidechains can be flipped to improve hydrogen bonding and reduce clashes. All (4) such sidechains are listed below:

Mol	Chain	Res	Type
1	A	110	GLN
1	A	116	HIS
1	B	6	HIS
1	B	70	ASN

5.3.3 RNA [i](#)

There are no RNA molecules in this entry.

5.4 Non-standard residues in protein, DNA, RNA chains [i](#)

There are no non-standard protein/DNA/RNA residues in this entry.

5.5 Carbohydrates [i](#)

There are no carbohydrates in this entry.

5.6 Ligand geometry [i](#)

Of 6 ligands modelled in this entry, 4 are monoatomic - leaving 2 for Mogul analysis.

In the following table, the Counts columns list the number of bonds (or angles) for which Mogul statistics could be retrieved, the number of bonds (or angles) that are observed in the model and the number of bonds (or angles) that are defined in the chemical component dictionary. The Link column lists molecule types, if any, to which the group is linked. The Z score for a bond length (or angle) is the number of standard deviations the observed value is removed from the expected value. A bond length (or angle) with $|Z| > 2$ is considered an outlier worth inspection. RMSZ is the root-mean-square of all Z scores of the bond lengths (or angles).

Mol	Type	Chain	Res	Link	Bond lengths			Bond angles		
					Counts	RMSZ	# $ Z > 2$	Counts	RMSZ	# $ Z > 2$
3	GEL	A	930	2	29,30,30	1.58	4 (13%)	27,36,36	1.70	4 (14%)
3	GEL	B	935	2	29,30,30	1.47	2 (6%)	27,36,36	1.70	3 (11%)

In the following table, the Chirals column lists the number of chiral outliers, the number of chiral centers analysed, the number of these observed in the model and the number defined in the chemical component dictionary. Similar counts are reported in the Torsion and Rings columns. '-' means no outliers of that kind were identified.

Mol	Type	Chain	Res	Link	Chirals	Torsions	Rings
3	GEL	A	930	2	-	0/33/34/34	0/0/0/0
3	GEL	B	935	2	-	0/33/34/34	0/0/0/0

All (6) bond length outliers are listed below:

Mol	Chain	Res	Type	Atoms	Z	Observed(Å)	Ideal(Å)
3	A	930	GEL	P2-O2P	-3.38	1.48	1.56
3	B	935	GEL	P2-O2P	-3.21	1.48	1.56
3	A	930	GEL	P2-O1P	-2.05	1.46	1.51
3	A	930	GEL	P2-O2	2.10	1.59	1.57
3	B	935	GEL	P2-C22	6.41	1.85	1.80
3	A	930	GEL	P2-C22	6.56	1.85	1.80

All (7) bond angle outliers are listed below:

Mol	Chain	Res	Type	Atoms	Z	Observed(°)	Ideal(°)
3	B	935	GEL	O2-P2-O1P	-5.71	106.00	115.71
3	A	930	GEL	O2-P2-O1P	-5.69	106.03	115.71
3	A	930	GEL	O1-C1-C2	2.15	112.33	108.71
3	A	930	GEL	O2-P2-C22	3.68	113.50	104.09
3	B	935	GEL	O2-P2-C22	3.76	113.71	104.09
3	A	930	GEL	O2P-P2-C22	4.12	114.19	105.41
3	B	935	GEL	O2P-P2-C22	4.21	114.40	105.41

There are no chirality outliers.

There are no torsion outliers.

There are no ring outliers.

2 monomers are involved in 6 short contacts:

Mol	Chain	Res	Type	Clashes	Symm-Clashes
3	A	930	GEL	3	0
3	B	935	GEL	3	0

5.7 Other polymers

There are no such residues in this entry.

5.8 Polymer linkage issues ⓘ

There are no chain breaks in this entry.

6 Fit of model and data ⓘ

6.1 Protein, DNA and RNA chains ⓘ

EDS was not executed - this section will therefore be empty.

6.2 Non-standard residues in protein, DNA, RNA chains ⓘ

EDS was not executed - this section will therefore be empty.

6.3 Carbohydrates ⓘ

EDS was not executed - this section will therefore be empty.

6.4 Ligands ⓘ

EDS was not executed - this section will therefore be empty.

6.5 Other polymers ⓘ

EDS was not executed - this section will therefore be empty.