



wwPDB X-ray Structure Validation Summary Report ⓘ

Feb 1, 2016 – 07:43 PM GMT

PDB ID : 4PO5
Title : Crystal structure of allophycocyanin B from Synechocystis PCC 6803
Authors : Pang, P.P.; Dong, L.L.; Sun, Y.F.; Zeng, X.L.; Ding, W.L.; Scheer, H.; Yang, X.; Zhao, K.H.
Deposited on : 2014-02-24
Resolution : 1.75 Å(reported)

This is a wwPDB X-ray Structure Validation Summary Report for a publicly released PDB entry.
We welcome your comments at validation@mail.wwpdb.org
A user guide is available at
<http://wwpdb.org/validation/2016/XrayValidationReportHelp>
with specific help available everywhere you see the ⓘ symbol.

The following versions of software and data (see [references ⓘ](#)) were used in the production of this report:

MolProbity : 4.02b-467
Mogul : 1.7 (RC4), CSD as536be (2015)
Xtriage (Phenix) : 1.9-1692
EDS : rb-20026688
Percentile statistics : 20151230.v01 (using entries in the PDB archive December 30th 2015)
Refmac : 5.8.0135
CCP4 : 6.5.0
Ideal geometry (proteins) : Engh & Huber (2001)
Ideal geometry (DNA, RNA) : Parkinson et al. (1996)
Validation Pipeline (wwPDB-VP) : trunk26865

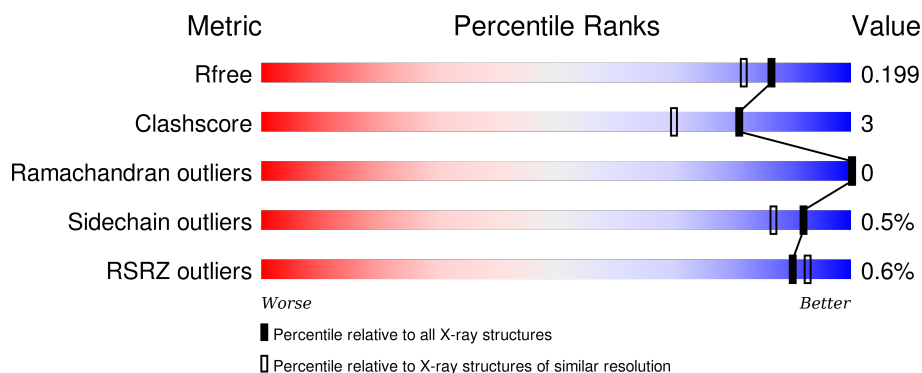
1 Overall quality at a glance ⓘ

The following experimental techniques were used to determine the structure:

X-RAY DIFFRACTION

The reported resolution of this entry is 1.75 Å.

Percentile scores (ranging between 0-100) for global validation metrics of the entry are shown in the following graphic. The table shows the number of entries on which the scores are based.



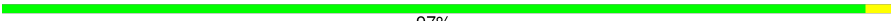
Metric	Whole archive (#Entries)	Similar resolution (#Entries, resolution range(Å))
R_{free}	91344	1609 (1.76-1.76)
Clashscore	102246	1730 (1.76-1.76)
Ramachandran outliers	100387	1711 (1.76-1.76)
Sidechain outliers	100360	1711 (1.76-1.76)
RSRZ outliers	91569	1610 (1.76-1.76)

The table below summarises the geometric issues observed across the polymeric chains and their fit to the electron density. The red, orange, yellow and green segments on the lower bar indicate the fraction of residues that contain outliers for ≥ 3 , 2, 1 and 0 types of geometric quality criteria. A grey segment represents the fraction of residues that are not modelled. The numeric value for each fraction is indicated below the corresponding segment, with a dot representing fractions $\leq 5\%$. The upper red bar (where present) indicates the fraction of residues that have poor fit to the electron density. The numeric value is given above the bar.

Mol	Chain	Length	Quality of chain
1	A	167	<div> <div>%</div> <div> <div></div> <div>90%</div> <div>7%</div> <div>.</div> </div> </div>
1	C	167	<div> <div>%</div> <div> <div></div> <div>90%</div> <div>7%</div> <div>.</div> </div> </div>
1	E	167	<div> <div>%</div> <div> <div></div> <div>92%</div> <div>5%</div> <div>.</div> </div> </div>
2	B	161	<div> <div></div> <div> <div></div> <div>96%</div> <div>.</div> <div>.</div> </div> </div>
2	D	161	<div> <div></div> <div> <div></div> <div>97%</div> <div>.</div> </div> </div>

Continued on next page...

Continued from previous page...

Mol	Chain	Length	Quality of chain
2	F	161	 97%

2 Entry composition

There are 5 unique types of molecules in this entry. The entry contains 9246 atoms, of which 0 are hydrogens and 0 are deuteriums.

In the tables below, the ZeroOcc column contains the number of atoms modelled with zero occupancy, the AltConf column contains the number of residues with at least one atom in alternate conformation and the Trace column contains the number of residues modelled with at most 2 atoms.

- Molecule 1 is a protein called Allophycocyanin subunit alpha-B.

Mol	Chain	Residues	Atoms					ZeroOcc	AltConf	Trace
1	A	162	Total	C	N	O	S	0	5	0
			1302	829	224	245	4			
1	C	162	Total	C	N	O	S	0	6	0
			1308	832	225	247	4			
1	E	162	Total	C	N	O	S	0	5	0
			1302	829	224	245	4			

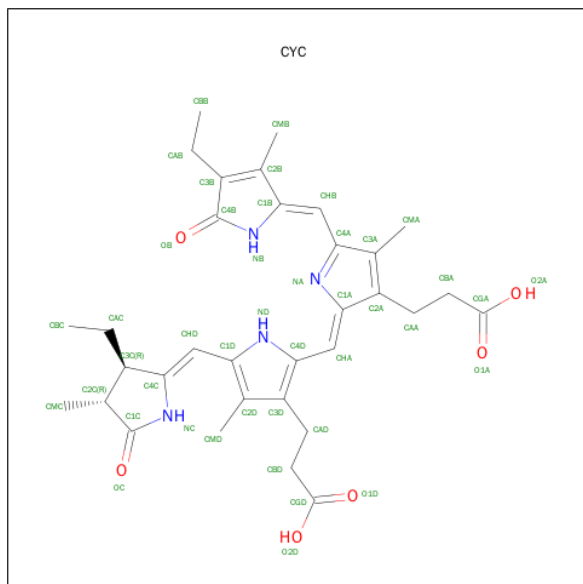
There are 18 discrepancies between the modelled and reference sequences:

Chain	Residue	Modelled	Actual	Comment	Reference
A	162	HIS	-	EXPRESSION TAG	UNP P72870
A	163	HIS	-	EXPRESSION TAG	UNP P72870
A	164	HIS	-	EXPRESSION TAG	UNP P72870
A	165	HIS	-	EXPRESSION TAG	UNP P72870
A	166	HIS	-	EXPRESSION TAG	UNP P72870
A	167	HIS	-	EXPRESSION TAG	UNP P72870
C	162	HIS	-	EXPRESSION TAG	UNP P72870
C	163	HIS	-	EXPRESSION TAG	UNP P72870
C	164	HIS	-	EXPRESSION TAG	UNP P72870
C	165	HIS	-	EXPRESSION TAG	UNP P72870
C	166	HIS	-	EXPRESSION TAG	UNP P72870
C	167	HIS	-	EXPRESSION TAG	UNP P72870
E	162	HIS	-	EXPRESSION TAG	UNP P72870
E	163	HIS	-	EXPRESSION TAG	UNP P72870
E	164	HIS	-	EXPRESSION TAG	UNP P72870
E	165	HIS	-	EXPRESSION TAG	UNP P72870
E	166	HIS	-	EXPRESSION TAG	UNP P72870
E	167	HIS	-	EXPRESSION TAG	UNP P72870

- Molecule 2 is a protein called Allophycocyanin beta chain.

Mol	Chain	Residues	Atoms					ZeroOcc	AltConf	Trace
2	B	161	Total	C	N	O	S	0	9	0
			1257	789	212	249	7			
2	D	161	Total	C	N	O	S	0	9	0
			1259	789	213	250	7			
2	F	161	Total	C	N	O	S	0	7	0
			1248	782	210	249	7			

- Molecule 3 is PHYCOCYANOBILIN (three-letter code: CYC) (formula: $C_{33}H_{40}N_4O_6$).



Mol	Chain	Residues	Atoms				ZeroOcc	AltConf
3	A	1	Total	C	N	O	0	1
			46	34	4	8		
3	B	1	Total	C	N	O	0	0
			43	33	4	6		
3	C	1	Total	C	N	O	0	1
			46	34	4	8		
3	D	1	Total	C	N	O	0	0
			43	33	4	6		
3	E	1	Total	C	N	O	0	1
			46	34	4	8		
3	F	1	Total	C	N	O	0	0
			43	33	4	6		

- Molecule 4 is SULFATE ION (three-letter code: SO4) (formula: O_4S).



Mol	Chain	Residues	Atoms			ZeroOcc	AltConf
4	A	1	Total	O	S	0	0
			5	4	1		
4	A	1	Total	O	S	0	0
			5	4	1		
4	B	1	Total	O	S	0	0
			5	4	1		
4	B	1	Total	O	S	0	0
			5	4	1		
4	B	1	Total	O	S	0	0
			5	4	1		
4	B	1	Total	O	S	0	0
			5	4	1		
4	C	1	Total	O	S	0	0
			5	4	1		
4	C	1	Total	O	S	0	0
			5	4	1		
4	D	1	Total	O	S	0	0
			5	4	1		
4	D	1	Total	O	S	0	0
			5	4	1		
4	D	1	Total	O	S	0	0
			5	4	1		
4	D	1	Total	O	S	0	0
			5	4	1		

Continued on next page...

Continued from previous page...

Mol	Chain	Residues	Atoms			ZeroOcc	AltConf
4	E	1	Total	O	S	0	0
			5	4	1		
4	E	1	Total	O	S	0	0
			5	4	1		
4	F	1	Total	O	S	0	0
			5	4	1		
4	F	1	Total	O	S	0	0
			5	4	1		
4	F	1	Total	O	S	0	0
			5	4	1		
4	F	1	Total	O	S	0	0
			5	4	1		
4	F	1	Total	O	S	0	0
			5	4	1		

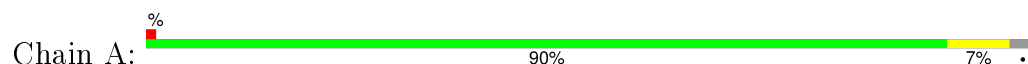
- Molecule 5 is water.

Mol	Chain	Residues	Atoms		ZeroOcc	AltConf
5	A	178	Total	O	0	0
			178	178		
5	B	217	Total	O	0	0
			217	217		
5	C	188	Total	O	0	0
			188	188		
5	D	212	Total	O	0	0
			212	212		
5	E	185	Total	O	0	0
			185	185		
5	F	218	Total	O	0	0
			218	218		

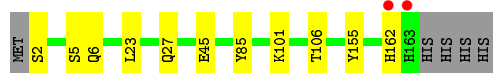
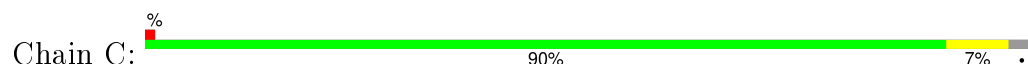
3 Residue-property plots [i](#)

These plots are drawn for all protein, RNA and DNA chains in the entry. The first graphic for a chain summarises the proportions of errors displayed in the second graphic. The second graphic shows the sequence view annotated by issues in geometry and electron density. Residues are color-coded according to the number of geometric quality criteria for which they contain at least one outlier: green = 0, yellow = 1, orange = 2 and red = 3 or more. A red dot above a residue indicates a poor fit to the electron density ($RSRZ > 2$). Stretches of 2 or more consecutive residues without any outlier are shown as a green connector. Residues present in the sample, but not in the model, are shown in grey.

- Molecule 1: Allophycocyanin subunit alpha-B



- Molecule 1: Allophycocyanin subunit alpha-B



- Molecule 1: Allophycocyanin subunit alpha-B



- Molecule 2: Allophycocyanin beta chain



- Molecule 2: Allophycocyanin beta chain



- Molecule 2: Allophycocyanin beta chain



H1	Q2	Y62	R76	K113	E148	S161
----	----	-----	-----	------	------	------

4 Data and refinement statistics

Property	Value	Source
Space group	I 4 2 2	Depositor
Cell constants a, b, c, α , β , γ	184.29Å 184.29Å 260.95Å 90.00° 90.00° 90.00°	Depositor
Resolution (Å)	32.58 – 1.75 32.58 – 1.75	Depositor EDS
% Data completeness (in resolution range)	98.6 (32.58-1.75) 98.3 (32.58-1.75)	Depositor EDS
R_{merge}	0.05	Depositor
R_{sym}	(Not available)	Depositor
$\langle I/\sigma(I) \rangle$ ¹	1.37 (at 1.75Å)	Xtriage
Refinement program	PHENIX (phenix.refine: dev_1610)	Depositor
R, R_{free}	0.170 , 0.194 0.180 , 0.199	Depositor DCC
R_{free} test set	11049 reflections (5.30%)	DCC
Wilson B-factor (Å ²)	24.1	Xtriage
Anisotropy	0.002	Xtriage
Bulk solvent k_{sol} (e/Å ³), B_{sol} (Å ²)	(Not available) , (Not available)	EDS
Estimated twinning fraction	0.478 for $-1/2^*h-1/2^*k-1/2^*l, -1/2^*h-1/2^*k+1/2^*l, -h+k$ 0.487 for $-1/2^*h+1/2^*k-1/2^*l, 1/2^*h-1/2^*k-1/2^*l, -h-k$	Xtriage
L-test for twinning ²	$\langle L \rangle = 0.50$, $\langle L^2 \rangle = 0.34$	Xtriage
Outliers	2 of 219472 reflections (0.001%)	Xtriage
F_o, F_c correlation	0.97	EDS
Total number of atoms	9246	wwPDB-VP
Average B, all atoms (Å ²)	31.0	wwPDB-VP

Xtriage's analysis on translational NCS is as follows: *The largest off-origin peak in the Patterson function is 3.41% of the height of the origin peak. No significant pseudotranslation is detected.*

¹Intensities estimated from amplitudes.

²Theoretical values of $\langle |L| \rangle$, $\langle L^2 \rangle$ for acentric reflections are 0.5, 0.375 respectively for untwinned datasets, and 0.333, 0.2 for perfectly twinned datasets.

5 Model quality [i](#)

5.1 Standard geometry [i](#)

Bond lengths and bond angles in the following residue types are not validated in this section: CYC, MEN, SO4

The Z score for a bond length (or angle) is the number of standard deviations the observed value is removed from the expected value. A bond length (or angle) with $|Z| > 5$ is considered an outlier worth inspection. RMSZ is the root-mean-square of all Z scores of the bond lengths (or angles).

Mol	Chain	Bond lengths		Bond angles	
		RMSZ	$\# Z > 5$	RMSZ	$\# Z > 5$
1	A	0.36	0/1342	0.47	0/1817
1	C	0.35	0/1348	0.48	0/1825
1	E	0.35	0/1342	0.48	0/1817
2	B	0.36	0/1279	0.54	1/1726 (0.1%)
2	D	0.35	0/1278	0.52	0/1725
2	F	0.36	0/1261	0.53	0/1703
All	All	0.35	0/7850	0.50	1/10613 (0.0%)

There are no bond length outliers.

All (1) bond angle outliers are listed below:

Mol	Chain	Res	Type	Atoms	Z	Observed(°)	Ideal(°)
2	B	36	LEU	CA-CB-CG	5.72	128.47	115.30

There are no chirality outliers.

There are no planarity outliers.

5.2 Too-close contacts [i](#)

In the following table, the Non-H and H(model) columns list the number of non-hydrogen atoms and hydrogen atoms in the chain respectively. The H(added) column lists the number of hydrogen atoms added and optimized by MolProbity. The Clashes column lists the number of clashes within the asymmetric unit, whereas Symm-Clashes lists symmetry related clashes.

Mol	Chain	Non-H	H(model)	H(added)	Clashes	Symm-Clashes
1	A	1302	0	1311	10	0
1	C	1308	0	1315	8	0
1	E	1302	0	1311	7	0
2	B	1257	0	1284	7	0

Continued on next page...

Continued from previous page...

Mol	Chain	Non-H	H(model)	H(added)	Clashes	Symm-Clashes
2	D	1259	0	1282	5	0
2	F	1248	0	1264	5	0
3	A	46	0	4	1	0
3	B	43	0	35	3	0
3	C	46	0	4	1	0
3	D	43	0	35	3	0
3	E	46	0	4	1	0
3	F	43	0	35	3	0
4	A	10	0	0	0	0
4	B	25	0	0	0	0
4	C	10	0	0	0	0
4	D	25	0	0	0	0
4	E	10	0	0	0	0
4	F	25	0	0	0	0
5	A	178	0	0	2	0
5	B	217	0	0	2	0
5	C	188	0	0	3	0
5	D	212	0	0	1	0
5	E	185	0	0	1	0
5	F	218	0	0	2	0
All	All	9246	0	7884	43	0

The all-atom clashscore is defined as the number of clashes found per 1000 atoms (including hydrogen atoms). The all-atom clashscore for this structure is 3.

The worst 5 of 43 close contacts within the same asymmetric unit are listed below, sorted by their clash magnitude.

Atom-1	Atom-2	Interatomic distance (Å)	Clash overlap (Å)
2:D:62:TYR:OH	3:E:201[B]:CYC:O1D	2.12	0.68
2:B:62:TYR:OH	3:C:201[B]:CYC:O1D	2.12	0.67
3:A:201[B]:CYC:O1D	2:F:62:TYR:OH	2.14	0.61
3:B:201:CYC:HMA1	3:B:201:CYC:NB	2.18	0.58
3:D:201:CYC:NB	3:D:201:CYC:HMA1	2.18	0.58

There are no symmetry-related clashes.

5.3 Torsion angles

5.3.1 Protein backbone

In the following table, the Percentiles column shows the percent Ramachandran outliers of the chain as a percentile score with respect to all X-ray entries followed by that with respect to entries of similar resolution.

The Analysed column shows the number of residues for which the backbone conformation was analysed, and the total number of residues.

Mol	Chain	Analysed	Favoured	Allowed	Outliers	Percentiles	
1	A	165/167 (99%)	165 (100%)	0	0	100	100
1	C	166/167 (99%)	166 (100%)	0	0	100	100
1	E	165/167 (99%)	165 (100%)	0	0	100	100
2	B	167/161 (104%)	165 (99%)	2 (1%)	0	100	100
2	D	167/161 (104%)	165 (99%)	2 (1%)	0	100	100
2	F	165/161 (102%)	163 (99%)	2 (1%)	0	100	100
All	All	995/984 (101%)	989 (99%)	6 (1%)	0	100	100

There are no Ramachandran outliers to report.

5.3.2 Protein sidechains

In the following table, the Percentiles column shows the percent sidechain outliers of the chain as a percentile score with respect to all X-ray entries followed by that with respect to entries of similar resolution.

The Analysed column shows the number of residues for which the sidechain conformation was analysed, and the total number of residues.

Mol	Chain	Analysed	Rotameric	Outliers	Percentiles	
1	A	139/139 (100%)	138 (99%)	1 (1%)	88	79
1	C	140/139 (101%)	139 (99%)	1 (1%)	88	79
1	E	139/139 (100%)	138 (99%)	1 (1%)	88	79
2	B	133/124 (107%)	132 (99%)	1 (1%)	86	77
2	D	133/124 (107%)	133 (100%)	0	100	100
2	F	131/124 (106%)	131 (100%)	0	100	100
All	All	815/789 (103%)	811 (100%)	4 (0%)	92	87

All (4) residues with a non-rotameric sidechain are listed below:

Mol	Chain	Res	Type
1	A	85	TYR
2	B	36	LEU
1	C	85	TYR
1	E	85	TYR

Some sidechains can be flipped to improve hydrogen bonding and reduce clashes. All (1) such sidechains are listed below:

Mol	Chain	Res	Type
1	E	163	HIS

5.3.3 RNA [i](#)

There are no RNA molecules in this entry.

5.4 Non-standard residues in protein, DNA, RNA chains [i](#)

3 non-standard protein/DNA/RNA residues are modelled in this entry.

In the following table, the Counts columns list the number of bonds (or angles) for which Mogul statistics could be retrieved, the number of bonds (or angles) that are observed in the model and the number of bonds (or angles) that are defined in the chemical component dictionary. The Link column lists molecule types, if any, to which the group is linked. The Z score for a bond length (or angle) is the number of standard deviations the observed value is removed from the expected value. A bond length (or angle) with $|Z| > 2$ is considered an outlier worth inspection. RMSZ is the root-mean-square of all Z scores of the bond lengths (or angles).

Mol	Type	Chain	Res	Link	Bond lengths			Bond angles		
					Counts	RMSZ	$\# Z > 2$	Counts	RMSZ	$\# Z > 2$
2	MEN	B	71	2	7,8,9	0.68	0	5,9,11	1.27	0
2	MEN	D	71	2	7,8,9	0.76	0	5,9,11	1.29	0
2	MEN	F	71	2	7,8,9	0.76	0	5,9,11	1.19	0

In the following table, the Chirals column lists the number of chiral outliers, the number of chiral centers analysed, the number of these observed in the model and the number defined in the chemical component dictionary. Similar counts are reported in the Torsion and Rings columns. '-' means no outliers of that kind were identified.

Mol	Type	Chain	Res	Link	Chirals	Torsions	Rings
2	MEN	B	71	2	-	0/6/8/10	0/0/0/0
2	MEN	D	71	2	-	0/6/8/10	0/0/0/0

Continued on next page...

Continued from previous page...

Mol	Type	Chain	Res	Link	Chirals	Torsions	Rings
2	MEN	F	71	2	-	0/6/8/10	0/0/0/0

There are no bond length outliers.

There are no bond angle outliers.

There are no chirality outliers.

There are no torsion outliers.

There are no ring outliers.

No monomer is involved in short contacts.

5.5 Carbohydrates ⓘ

There are no carbohydrates in this entry.

5.6 Ligand geometry ⓘ

30 ligands are modelled in this entry.

In the following table, the Counts columns list the number of bonds (or angles) for which Mogul statistics could be retrieved, the number of bonds (or angles) that are observed in the model and the number of bonds (or angles) that are defined in the chemical component dictionary. The Link column lists molecule types, if any, to which the group is linked. The Z score for a bond length (or angle) is the number of standard deviations the observed value is removed from the expected value. A bond length (or angle) with $|Z| > 2$ is considered an outlier worth inspection. RMSZ is the root-mean-square of all Z scores of the bond lengths (or angles).

Mol	Type	Chain	Res	Link	Bond lengths			Bond angles		
					Counts	RMSZ	# Z > 2	Counts	RMSZ	# Z > 2
3	CYC	A	201[A]	-	35,46,46	4.22	12 (34%)	47,67,67	2.33	22 (46%)
3	CYC	A	201[B]	-	35,46,46	4.22	12 (34%)	47,67,67	2.32	22 (46%)
4	SO4	A	202	-	4,4,4	0.24	0	6,6,6	0.12	0
4	SO4	A	203	-	4,4,4	0.22	0	6,6,6	0.15	0
3	CYC	B	201	2	35,46,46	4.45	13 (37%)	47,67,67	2.35	16 (34%)
4	SO4	B	202	-	4,4,4	0.23	0	6,6,6	0.15	0
4	SO4	B	203	-	4,4,4	0.21	0	6,6,6	0.13	0
4	SO4	B	204	-	4,4,4	0.20	0	6,6,6	0.15	0
4	SO4	B	205	-	4,4,4	0.21	0	6,6,6	0.08	0
4	SO4	B	206	-	4,4,4	0.20	0	6,6,6	0.12	0
3	CYC	C	201[A]	-	35,46,46	4.30	10 (28%)	47,67,67	2.38	23 (48%)

Mol	Type	Chain	Res	Link	Bond lengths			Bond angles		
					Counts	RMSZ	# Z > 2	Counts	RMSZ	# Z > 2
3	CYC	C	201[B]	-	35,46,46	4.30	10 (28%)	47,67,67	2.38	23 (48%)
4	SO4	C	202	-	4,4,4	0.23	0	6,6,6	0.08	0
4	SO4	C	203	-	4,4,4	0.22	0	6,6,6	0.12	0
3	CYC	D	201	2	35,46,46	4.45	12 (34%)	47,67,67	2.35	13 (27%)
4	SO4	D	202	-	4,4,4	0.23	0	6,6,6	0.09	0
4	SO4	D	203	-	4,4,4	0.20	0	6,6,6	0.11	0
4	SO4	D	204	-	4,4,4	0.20	0	6,6,6	0.07	0
4	SO4	D	205	-	4,4,4	0.23	0	6,6,6	0.10	0
4	SO4	D	206	-	4,4,4	0.20	0	6,6,6	0.11	0
3	CYC	E	201[A]	-	35,46,46	4.26	13 (37%)	47,67,67	2.34	20 (42%)
3	CYC	E	201[B]	-	35,46,46	4.26	13 (37%)	47,67,67	2.34	20 (42%)
4	SO4	E	202	-	4,4,4	0.22	0	6,6,6	0.10	0
4	SO4	E	203	-	4,4,4	0.24	0	6,6,6	0.09	0
3	CYC	F	201	-	35,46,46	4.40	12 (34%)	47,67,67	2.15	15 (31%)
4	SO4	F	202	-	4,4,4	0.22	0	6,6,6	0.11	0
4	SO4	F	203	-	4,4,4	0.20	0	6,6,6	0.09	0
4	SO4	F	204	-	4,4,4	0.20	0	6,6,6	0.10	0
4	SO4	F	205	-	4,4,4	0.23	0	6,6,6	0.10	0
4	SO4	F	206	-	4,4,4	0.21	0	6,6,6	0.07	0

In the following table, the Chirals column lists the number of chiral outliers, the number of chiral centers analysed, the number of these observed in the model and the number defined in the chemical component dictionary. Similar counts are reported in the Torsion and Rings columns. '-' means no outliers of that kind were identified.

Mol	Type	Chain	Res	Link	Chirals	Torsions	Rings
3	CYC	A	201[A]	-	-	2/21/74/74	0/4/4/4
3	CYC	A	201[B]	-	-	2/21/74/74	0/4/4/4
4	SO4	A	202	-	-	0/0/0/0	0/0/0/0
4	SO4	A	203	-	-	0/0/0/0	0/0/0/0
3	CYC	B	201	2	-	2/21/74/74	0/4/4/4
4	SO4	B	202	-	-	0/0/0/0	0/0/0/0
4	SO4	B	203	-	-	0/0/0/0	0/0/0/0
4	SO4	B	204	-	-	0/0/0/0	0/0/0/0
4	SO4	B	205	-	-	0/0/0/0	0/0/0/0
4	SO4	B	206	-	-	0/0/0/0	0/0/0/0
3	CYC	C	201[A]	-	-	2/21/74/74	0/4/4/4
3	CYC	C	201[B]	-	-	2/21/74/74	0/4/4/4
4	SO4	C	202	-	-	0/0/0/0	0/0/0/0
4	SO4	C	203	-	-	0/0/0/0	0/0/0/0

Continued on next page...

Continued from previous page...

Mol	Type	Chain	Res	Link	Chirals	Torsions	Rings
3	CYC	D	201	2	-	2/21/74/74	0/4/4/4
4	SO4	D	202	-	-	0/0/0/0	0/0/0/0
4	SO4	D	203	-	-	0/0/0/0	0/0/0/0
4	SO4	D	204	-	-	0/0/0/0	0/0/0/0
4	SO4	D	205	-	-	0/0/0/0	0/0/0/0
4	SO4	D	206	-	-	0/0/0/0	0/0/0/0
3	CYC	E	201[A]	-	-	2/21/74/74	0/4/4/4
3	CYC	E	201[B]	-	-	2/21/74/74	0/4/4/4
4	SO4	E	202	-	-	0/0/0/0	0/0/0/0
4	SO4	E	203	-	-	0/0/0/0	0/0/0/0
3	CYC	F	201	-	-	2/21/74/74	0/4/4/4
4	SO4	F	202	-	-	0/0/0/0	0/0/0/0
4	SO4	F	203	-	-	0/0/0/0	0/0/0/0
4	SO4	F	204	-	-	0/0/0/0	0/0/0/0
4	SO4	F	205	-	-	0/0/0/0	0/0/0/0
4	SO4	F	206	-	-	0/0/0/0	0/0/0/0

The worst 5 of 107 bond length outliers are listed below:

Mol	Chain	Res	Type	Atoms	Z	Observed(Å)	Ideal(Å)
3	B	201	CYC	C2C-C1C	-19.37	1.34	1.52
3	D	201	CYC	C2C-C1C	-19.37	1.34	1.52
3	F	201	CYC	C2C-C1C	-19.05	1.34	1.52
3	C	201[B]	CYC	C2C-C1C	-18.95	1.34	1.52
3	C	201[A]	CYC	C2C-C1C	-18.95	1.34	1.52

The worst 5 of 174 bond angle outliers are listed below:

Mol	Chain	Res	Type	Atoms	Z	Observed(°)	Ideal(°)
3	E	201[A]	CYC	CAD-C3D-C4D	-6.12	120.36	127.01
3	E	201[B]	CYC	CAD-C3D-C4D	-6.12	120.36	127.01
3	A	201[A]	CYC	CAD-C3D-C4D	-5.60	120.93	127.01
3	A	201[B]	CYC	CAD-C3D-C4D	-5.60	120.93	127.01
3	C	201[B]	CYC	CAD-C3D-C4D	-5.46	121.08	127.01

There are no chirality outliers.

5 of 18 torsion outliers are listed below:

Mol	Chain	Res	Type	Atoms
3	F	201	CYC	C1B-CHB-C4A-C3A
3	D	201	CYC	C1B-CHB-C4A-C3A

Continued on next page...

Continued from previous page...

Mol	Chain	Res	Type	Atoms
3	B	201	CYC	C1B-CHB-C4A-C3A
3	D	201	CYC	C1B-CHB-C4A-NA
3	F	201	CYC	C1B-CHB-C4A-NA

There are no ring outliers.

6 monomers are involved in 12 short contacts:

Mol	Chain	Res	Type	Clashes	Symm-Clashes
3	A	201[B]	CYC	1	0
3	B	201	CYC	3	0
3	C	201[B]	CYC	1	0
3	D	201	CYC	3	0
3	E	201[B]	CYC	1	0
3	F	201	CYC	3	0

5.7 Other polymers [i](#)

There are no such residues in this entry.

5.8 Polymer linkage issues [i](#)

There are no chain breaks in this entry.

6 Fit of model and data ⓘ

6.1 Protein, DNA and RNA chains ⓘ

In the following table, the column labelled ‘#RSRZ> 2’ contains the number (and percentage) of RSRZ outliers, followed by percent RSRZ outliers for the chain as percentile scores relative to all X-ray entries and entries of similar resolution. The OWAB column contains the minimum, median, 95th percentile and maximum values of the occupancy-weighted average B-factor per residue. The column labelled ‘Q< 0.9’ lists the number of (and percentage) of residues with an average occupancy less than 0.9.

Mol	Chain	Analysed	<RSRZ>	#RSRZ>2	OWAB(Å ²)	Q<0.9
1	A	162/167 (97%)	-0.12	2 (1%) 81 86	17, 29, 49, 91	0
1	C	162/167 (97%)	-0.09	2 (1%) 81 86	17, 29, 47, 102	0
1	E	162/167 (97%)	-0.11	2 (1%) 81 86	17, 29, 49, 101	0
2	B	160/161 (99%)	-0.14	0 100 100	18, 25, 47, 60	0
2	D	160/161 (99%)	-0.17	0 100 100	18, 25, 45, 60	0
2	F	160/161 (99%)	-0.19	0 100 100	18, 25, 45, 59	0
All	All	966/984 (98%)	-0.14	6 (0%) 90 92	17, 26, 48, 102	0

The worst 5 of 6 RSRZ outliers are listed below:

Mol	Chain	Res	Type	RSRZ
1	C	163	HIS	8.3
1	E	163	HIS	7.1
1	E	162	HIS	6.4
1	A	162	HIS	5.5
1	C	162	HIS	5.3

6.2 Non-standard residues in protein, DNA, RNA chains ⓘ

In the following table, the Atoms column lists the number of modelled atoms in the group and the number defined in the chemical component dictionary. LLDF column lists the quality of electron density of the group with respect to its neighbouring residues in protein, DNA or RNA chains. The B-factors column lists the minimum, median, 95th percentile and maximum values of B factors of atoms in the group. The column labelled ‘Q< 0.9’ lists the number of atoms with occupancy less than 0.9.

Mol	Type	Chain	Res	Atoms	RSCC	RSR	LLDF	B-factors(Å ²)	Q<0.9
2	MEN	F	71	9/10	0.98	0.08	-	18,22,23,25	0
2	MEN	B	71	9/10	0.96	0.09	-	17,20,23,23	0

Continued on next page...

Continued from previous page...

Mol	Type	Chain	Res	Atoms	RSCC	RSR	LLDF	B-factors(\AA^2)	Q<0.9
2	MEN	D	71	9/10	0.97	0.08	-	17,21,24,25	0

6.3 Carbohydrates [i](#)

There are no carbohydrates in this entry.

6.4 Ligands [i](#)

In the following table, the Atoms column lists the number of modelled atoms in the group and the number defined in the chemical component dictionary. LLDF column lists the quality of electron density of the group with respect to its neighbouring residues in protein, DNA or RNA chains. The B-factors column lists the minimum, median, 95th percentile and maximum values of B factors of atoms in the group. The column labelled 'Q< 0.9' lists the number of atoms with occupancy less than 0.9.

Mol	Type	Chain	Res	Atoms	RSCC	RSR	LLDF	B-factors(\AA^2)	Q<0.9
3	CYC	E	201[A]	43/43	0.94	0.09	0.92	13,17,21,27	3
4	SO4	D	204	5/5	0.80	0.15	0.80	102,104,105,108	0
3	CYC	F	201	43/43	0.93	0.10	0.80	17,25,42,51	0
3	CYC	A	201[A]	43/43	0.95	0.09	0.56	14,17,22,28	3
3	CYC	A	201[B]	43/43	0.95	0.09	0.56	14,17,28,37	3
3	CYC	C	201[A]	43/43	0.96	0.09	0.23	14,18,22,27	3
3	CYC	B	201	43/43	0.93	0.09	-0.08	18,23,42,54	0
3	CYC	D	201	43/43	0.93	0.09	-0.21	18,24,43,52	0
3	CYC	E	201[B]	43/43	0.94	0.09	-0.23	13,17,27,36	3
3	CYC	C	201[B]	43/43	0.96	0.09	-0.52	14,18,27,39	3
4	SO4	A	203	5/5	0.87	0.22	-	100,102,104,106	0
4	SO4	B	206	5/5	0.64	0.34	-	131,132,132,132	0
4	SO4	B	202	5/5	0.93	0.12	-	80,81,83,85	0
4	SO4	B	205	5/5	0.90	0.21	-	114,114,116,117	0
4	SO4	F	204	5/5	0.83	0.16	-	108,111,112,113	0
4	SO4	C	202	5/5	0.91	0.15	-	93,98,99,102	0
4	SO4	B	204	5/5	0.78	0.19	-	98,104,105,108	0
4	SO4	F	203	5/5	0.96	0.10	-	45,54,62,69	0
4	SO4	B	203	5/5	0.93	0.10	-	46,56,65,72	0
4	SO4	C	203	5/5	0.92	0.19	-	94,96,98,101	0
4	SO4	F	202	5/5	0.95	0.09	-	80,82,82,86	0
4	SO4	F	206	5/5	0.71	0.33	-	136,136,137,137	0
4	SO4	D	202	5/5	0.96	0.11	-	81,85,87,90	0
4	SO4	E	203	5/5	0.90	0.24	-	99,101,104,104	0
4	SO4	D	205	5/5	0.93	0.21	-	109,109,111,113	0

Continued on next page...

Continued from previous page...

Mol	Type	Chain	Res	Atoms	RSCC	RSR	LLDF	B-factors(\AA^2)	Q<0.9
4	SO4	F	205	5/5	0.90	0.22	-	113,113,114,115	0
4	SO4	E	202	5/5	0.90	0.13	-	97,100,102,103	0
4	SO4	A	202	5/5	0.88	0.16	-	94,98,100,102	0
4	SO4	D	203	5/5	0.95	0.11	-	43,53,62,69	0
4	SO4	D	206	5/5	0.53	0.32	-	129,129,131,132	0

6.5 Other polymers [i](#)

There are no such residues in this entry.