



Full wwPDB X-ray Structure Validation Report ⓘ

Feb 1, 2016 – 07:42 PM GMT

PDB ID : 4PP9
Title : ITK kinase domain with compound 1 (N-[1-(3-CYANOBENZYL)-1H-PYRAZOL-4-YL]-2H-INDAZOLE-3-CARBOXAMIDE)
Authors : Eigenbrot, C.; Shia, S.
Deposited on : 2014-02-26
Resolution : 2.58 Å(reported)

This is a Full wwPDB X-ray Structure Validation Report for a publicly released PDB entry.
We welcome your comments at validation@mail.wwpdb.org
A user guide is available at
<http://wwpdb.org/validation/2016/XrayValidationReportHelp>
with specific help available everywhere you see the ⓘ symbol.

The following versions of software and data (see [references ⓘ](#)) were used in the production of this report:

MolProbity : 4.02b-467
Mogul : 1.7 (RC4), CSD as536be (2015)
Xtriage (Phenix) : 1.9-1692
EDS : rb-20026688
Percentile statistics : 20151230.v01 (using entries in the PDB archive December 30th 2015)
Refmac : 5.8.0135
CCP4 : 6.5.0
Ideal geometry (proteins) : Engh & Huber (2001)
Ideal geometry (DNA, RNA) : Parkinson et al. (1996)
Validation Pipeline (wwPDB-VP) : trunk26865

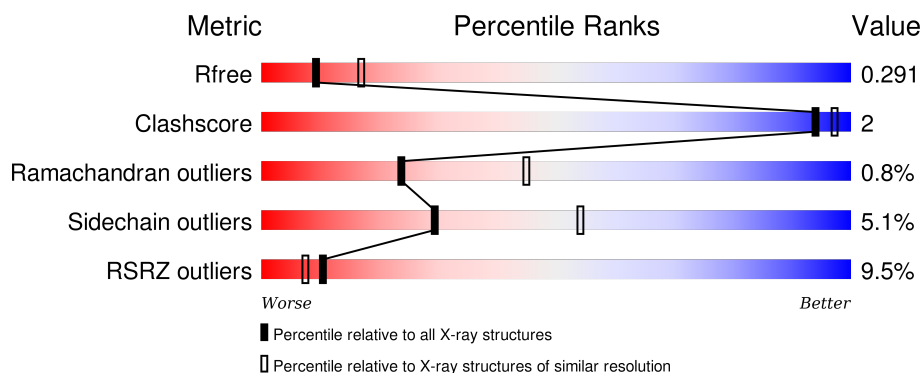
1 Overall quality at a glance

The following experimental techniques were used to determine the structure:

X-RAY DIFFRACTION

The reported resolution of this entry is 2.58 Å.

Percentile scores (ranging between 0-100) for global validation metrics of the entry are shown in the following graphic. The table shows the number of entries on which the scores are based.



Metric	Whole archive (#Entries)	Similar resolution (#Entries, resolution range(Å))
R_{free}	91344	2636 (2.60-2.56)
Clashscore	102246	3003 (2.60-2.56)
Ramachandran outliers	100387	2956 (2.60-2.56)
Sidechain outliers	100360	2956 (2.60-2.56)
RSRZ outliers	91569	2642 (2.60-2.56)

The table below summarises the geometric issues observed across the polymeric chains and their fit to the electron density. The red, orange, yellow and green segments on the lower bar indicate the fraction of residues that contain outliers for ≥ 3 , 2, 1 and 0 types of geometric quality criteria. A grey segment represents the fraction of residues that are not modelled. The numeric value for each fraction is indicated below the corresponding segment, with a dot representing fractions $\leq 5\%$. The upper red bar (where present) indicates the fraction of residues that have poor fit to the electron density. The numeric value is given above the bar.

Mol	Chain	Length	Quality of chain
1	A	266	<div> <div>8%</div> <div>84%</div> <div>8%</div> <div>8%</div> </div>
1	B	266	<div> <div>10%</div> <div>84%</div> <div>8%</div> <div>7%</div> </div>

2 Entry composition [i](#)

There are 4 unique types of molecules in this entry. The entry contains 4068 atoms, of which 0 are hydrogens and 0 are deuteriums.

In the tables below, the ZeroOcc column contains the number of atoms modelled with zero occupancy, the AltConf column contains the number of residues with at least one atom in alternate conformation and the Trace column contains the number of residues modelled with at most 2 atoms.

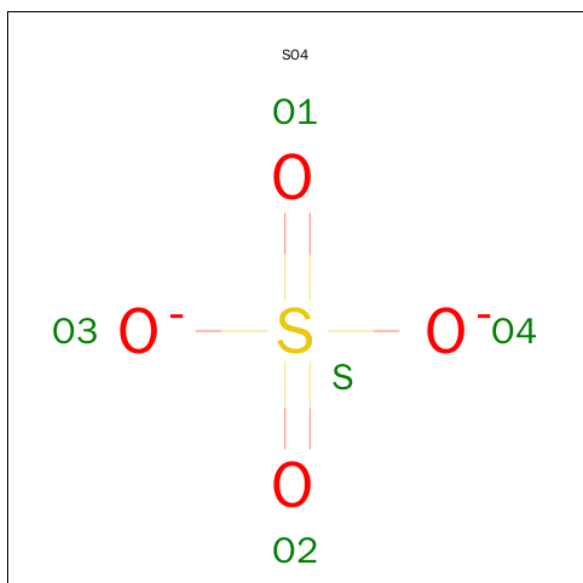
- Molecule 1 is a protein called Tyrosine-protein kinase ITK/TSK.

Mol	Chain	Residues	Atoms					ZeroOcc	AltConf	Trace
1	A	246	Total	C	N	O	S	0	0	0
			1962	1252	327	367	16			
1	B	247	Total	C	N	O	S	0	0	0
			1970	1257	328	368	17			

There are 6 discrepancies between the modelled and reference sequences:

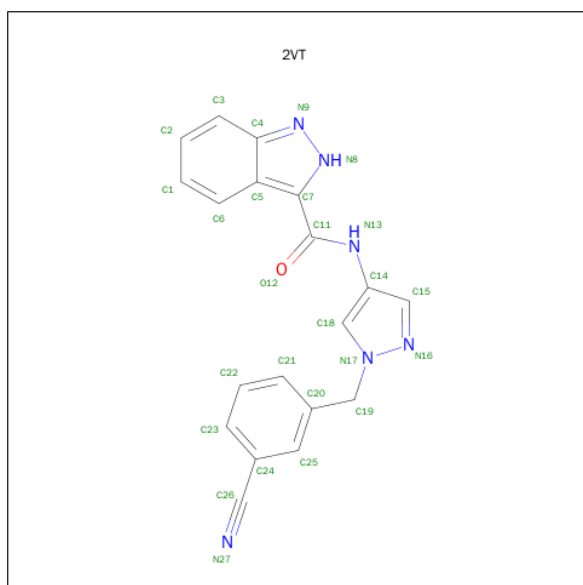
Chain	Residue	Modelled	Actual	Comment	Reference
A	355	GLY	-	EXPRESSION TAG	UNP Q08881
A	356	SER	-	EXPRESSION TAG	UNP Q08881
A	512	GLU	TYR	ENGINEERED MUTATION	UNP Q08881
B	355	GLY	-	EXPRESSION TAG	UNP Q08881
B	356	SER	-	EXPRESSION TAG	UNP Q08881
B	512	GLU	TYR	ENGINEERED MUTATION	UNP Q08881

- Molecule 2 is SULFATE ION (three-letter code: SO₄) (formula: O₄S).



Mol	Chain	Residues	Atoms	ZeroOcc	AltConf
2	A	1	Total O S 5 4 1	0	0
2	A	1	Total O S 5 4 1	0	0

- Molecule 3 is N-[1-(3-CYANO BENZYL)-1H-PYRAZOL-4-YL]-2H-INDAZOLE-3-CARBOXAMIDE (three-letter code: 2VT) (formula: C₁₉H₁₄N₆O).



Mol	Chain	Residues	Atoms	ZeroOcc	AltConf
3	A	1	Total C N O 26 19 6 1	0	0
3	B	1	Total C N O 26 19 6 1	0	0

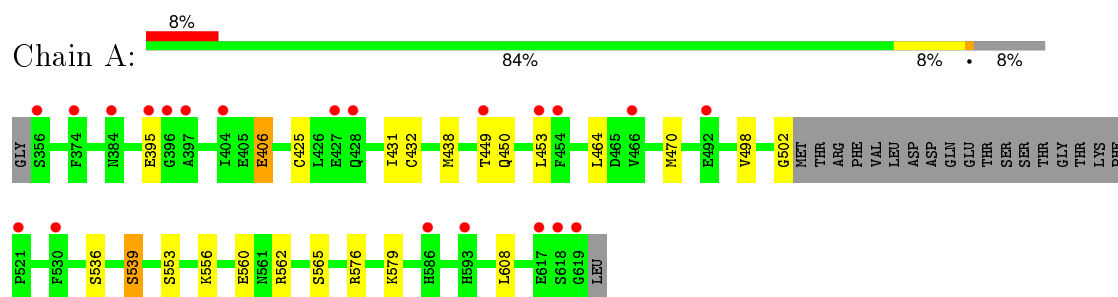
- Molecule 4 is water.

Mol	Chain	Residues	Atoms	ZeroOcc	AltConf
4	A	42	Total O 42 42	0	0
4	B	32	Total O 32 32	0	0

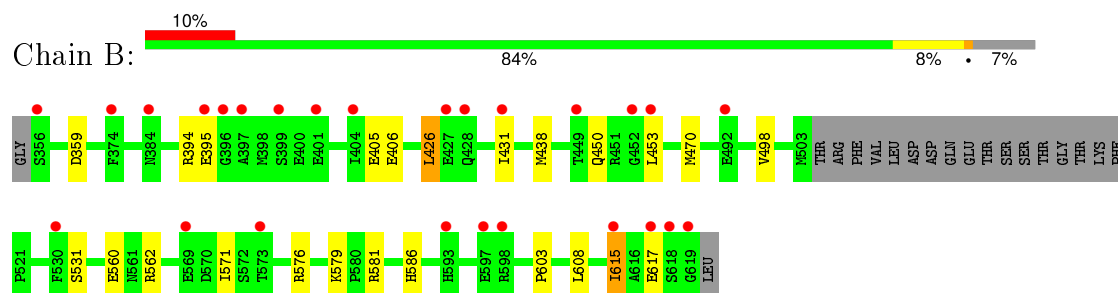
3 Residue-property plots [i](#)

These plots are drawn for all protein, RNA and DNA chains in the entry. The first graphic for a chain summarises the proportions of errors displayed in the second graphic. The second graphic shows the sequence view annotated by issues in geometry and electron density. Residues are color-coded according to the number of geometric quality criteria for which they contain at least one outlier: green = 0, yellow = 1, orange = 2 and red = 3 or more. A red dot above a residue indicates a poor fit to the electron density ($\text{RSRZ} > 2$). Stretches of 2 or more consecutive residues without any outlier are shown as a green connector. Residues present in the sample, but not in the model, are shown in grey.

- Molecule 1: Tyrosine-protein kinase ITK/TSK



- Molecule 1: Tyrosine-protein kinase ITK/TSK



4 Data and refinement statistics

Property	Value	Source
Space group	P 1 21 1	Depositor
Cell constants a, b, c, α , β , γ	55.04Å 104.09Å 57.31Å 90.00° 110.21° 90.00°	Depositor
Resolution (Å)	25.34 – 2.58 25.07 – 2.58	Depositor EDS
% Data completeness (in resolution range)	94.0 (25.34-2.58) 94.3 (25.07-2.58)	Depositor EDS
R_{merge}	(Not available)	Depositor
R_{sym}	0.15	Depositor
$\langle I/\sigma(I) \rangle$ ¹	2.23 (at 2.57Å)	Xtriage
Refinement program	BUSTER 2.11.4	Depositor
R, R_{free}	0.223 , 0.284 0.230 , 0.291	Depositor DCC
R_{free} test set	919 reflections (5.39%)	DCC
Wilson B-factor (Å ²)	34.0	Xtriage
Anisotropy	0.866	Xtriage
Bulk solvent k_{sol} (e/Å ³), B_{sol} (Å ²)	0.34 , 42.0	EDS
Estimated twinning fraction	0.000 for l,-k,h	Xtriage
L-test for twinning ²	$\langle L \rangle = 0.51$, $\langle L^2 \rangle = 0.34$	Xtriage
Outliers	1 of 17975 reflections (0.006%)	Xtriage
F_o, F_c correlation	0.92	EDS
Total number of atoms	4068	wwPDB-VP
Average B, all atoms (Å ²)	44.0	wwPDB-VP

Xtriage's analysis on translational NCS is as follows: *The largest off-origin peak in the Patterson function is 9.14% of the height of the origin peak. No significant pseudotranslation is detected.*

¹Intensities estimated from amplitudes.

²Theoretical values of $\langle |L| \rangle$, $\langle L^2 \rangle$ for acentric reflections are 0.5, 0.375 respectively for untwinned datasets, and 0.333, 0.2 for perfectly twinned datasets.

5 Model quality

5.1 Standard geometry

Bond lengths and bond angles in the following residue types are not validated in this section: SO4, 2VT

The Z score for a bond length (or angle) is the number of standard deviations the observed value is removed from the expected value. A bond length (or angle) with $|Z| > 5$ is considered an outlier worth inspection. RMSZ is the root-mean-square of all Z scores of the bond lengths (or angles).

Mol	Chain	Bond lengths		Bond angles	
		RMSZ	# Z >5	RMSZ	# Z >5
1	A	0.41	0/2006	0.63	0/2708
1	B	0.41	0/2014	0.64	0/2718
All	All	0.41	0/4020	0.63	0/5426

There are no bond length outliers.

There are no bond angle outliers.

There are no chirality outliers.

There are no planarity outliers.

5.2 Too-close contacts

In the following table, the Non-H and H(model) columns list the number of non-hydrogen atoms and hydrogen atoms in the chain respectively. The H(added) column lists the number of hydrogen atoms added and optimized by MolProbity. The Clashes column lists the number of clashes within the asymmetric unit, whereas Symm-Clashes lists symmetry related clashes.

Mol	Chain	Non-H	H(model)	H(added)	Clashes	Symm-Clashes
1	A	1962	0	1918	8	0
1	B	1970	0	1927	6	0
2	A	10	0	0	0	0
3	A	26	0	14	1	0
3	B	26	0	14	1	0
4	A	42	0	0	0	0
4	B	32	0	0	0	0
All	All	4068	0	3873	14	0

The all-atom clashscore is defined as the number of clashes found per 1000 atoms (including hydrogen atoms). The all-atom clashscore for this structure is 2.

All (14) close contacts within the same asymmetric unit are listed below, sorted by their clash magnitude.

Atom-1	Atom-2	Interatomic distance (Å)	Clash overlap (Å)
1:B:438:MET:H	3:B:701:2VT:H5	1.40	0.67
1:A:438:MET:H	3:A:703:2VT:H5	1.43	0.66
1:B:426:LEU:HA	1:B:431:ILE:HG13	1.80	0.64
1:B:586:HIS:HB3	1:B:615:ILE:HG12	1.83	0.61
1:A:406:GLU:HG3	1:A:502:GLY:HA3	1.83	0.61
1:A:470:MET:HE3	1:A:498:VAL:HG11	1.84	0.59
1:A:449:THR:O	1:A:450:GLN:HB2	2.08	0.52
1:A:553:SER:HB3	1:A:556:LYS:HB2	1.94	0.50
1:A:536:SER:H	1:A:539:SER:HB2	1.78	0.48
1:B:603:PRO:HG2	1:B:608:LEU:HG	1.95	0.47
1:B:450:GLN:HA	1:B:453:LEU:HD12	1.98	0.45
1:B:470:MET:HE3	1:B:498:VAL:HG11	1.97	0.45
1:A:450:GLN:HA	1:A:453:LEU:HD12	2.02	0.41
1:A:425:CYS:HB3	1:A:432:CYS:SG	2.60	0.41

There are no symmetry-related clashes.

5.3 Torsion angles [i](#)

5.3.1 Protein backbone [i](#)

In the following table, the Percentiles column shows the percent Ramachandran outliers of the chain as a percentile score with respect to all X-ray entries followed by that with respect to entries of similar resolution.

The Analysed column shows the number of residues for which the backbone conformation was analysed, and the total number of residues.

Mol	Chain	Analysed	Favoured	Allowed	Outliers	Percentiles	
1	A	242/266 (91%)	234 (97%)	7 (3%)	1 (0%)	39	63
1	B	243/266 (91%)	236 (97%)	4 (2%)	3 (1%)	16	33
All	All	485/532 (91%)	470 (97%)	11 (2%)	4 (1%)	24	45

All (4) Ramachandran outliers are listed below:

Mol	Chain	Res	Type
1	B	395	GLU
1	B	560	GLU

Continued on next page...

Continued from previous page...

Mol	Chain	Res	Type
1	A	560	GLU
1	B	394	ARG

5.3.2 Protein sidechains ⓘ

In the following table, the Percentiles column shows the percent sidechain outliers of the chain as a percentile score with respect to all X-ray entries followed by that with respect to entries of similar resolution.

The Analysed column shows the number of residues for which the sidechain conformation was analysed, and the total number of residues.

Mol	Chain	Analysed	Rotameric	Outliers	Percentiles	
1	A	215/233 (92%)	205 (95%)	10 (5%)	32	58
1	B	216/233 (93%)	204 (94%)	12 (6%)	26	49
All	All	431/466 (92%)	409 (95%)	22 (5%)	29	54

All (22) residues with a non-rotameric sidechain are listed below:

Mol	Chain	Res	Type
1	A	395	GLU
1	A	406	GLU
1	A	431	ILE
1	A	464	LEU
1	A	539	SER
1	A	562	ARG
1	A	565	SER
1	A	576	ARG
1	A	579	LYS
1	A	608	LEU
1	B	359	ASP
1	B	405	GLU
1	B	406	GLU
1	B	426	LEU
1	B	531	SER
1	B	562	ARG
1	B	571	ILE
1	B	576	ARG
1	B	579	LYS
1	B	581	ARG
1	B	615	ILE

Continued on next page...

Continued from previous page...

Mol	Chain	Res	Type
1	B	617	GLU

Some sidechains can be flipped to improve hydrogen bonding and reduce clashes. All (3) such sidechains are listed below:

Mol	Chain	Res	Type
1	A	440	HIS
1	A	487	ASN
1	B	589	GLN

5.3.3 RNA [i](#)

There are no RNA molecules in this entry.

5.4 Non-standard residues in protein, DNA, RNA chains [i](#)

There are no non-standard protein/DNA/RNA residues in this entry.

5.5 Carbohydrates [i](#)

There are no carbohydrates in this entry.

5.6 Ligand geometry [i](#)

4 ligands are modelled in this entry.

In the following table, the Counts columns list the number of bonds (or angles) for which Mogul statistics could be retrieved, the number of bonds (or angles) that are observed in the model and the number of bonds (or angles) that are defined in the chemical component dictionary. The Link column lists molecule types, if any, to which the group is linked. The Z score for a bond length (or angle) is the number of standard deviations the observed value is removed from the expected value. A bond length (or angle) with $|Z| > 2$ is considered an outlier worth inspection. RMSZ is the root-mean-square of all Z scores of the bond lengths (or angles).

Mol	Type	Chain	Res	Link	Bond lengths			Bond angles		
					Counts	RMSZ	$\# Z > 2$	Counts	RMSZ	$\# Z > 2$
2	SO4	A	701	-	4,4,4	0.18	0	6,6,6	0.12	0
2	SO4	A	702	-	4,4,4	0.15	0	6,6,6	0.08	0
3	2VT	A	703	-	27,29,29	1.28	2 (7%)	28,40,40	1.77	6 (21%)
3	2VT	B	701	-	27,29,29	1.34	3 (11%)	28,40,40	1.85	6 (21%)

In the following table, the Chirals column lists the number of chiral outliers, the number of chiral centers analysed, the number of these observed in the model and the number defined in the chemical component dictionary. Similar counts are reported in the Torsion and Rings columns. '-' means no outliers of that kind were identified.

Mol	Type	Chain	Res	Link	Chirals	Torsions	Rings
2	SO4	A	701	-	-	0/0/0/0	0/0/0/0
2	SO4	A	702	-	-	0/0/0/0	0/0/0/0
3	2VT	A	703	-	-	0/8/14/14	0/4/4/4
3	2VT	B	701	-	-	0/8/14/14	0/4/4/4

All (5) bond length outliers are listed below:

Mol	Chain	Res	Type	Atoms	Z	Observed(Å)	Ideal(Å)
3	B	701	2VT	N9-N8	-4.40	1.29	1.37
3	A	703	2VT	N9-N8	-4.38	1.29	1.37
3	B	701	2VT	C15-C14	2.28	1.41	1.37
3	A	703	2VT	N16-N17	2.95	1.39	1.35
3	B	701	2VT	N16-N17	3.09	1.40	1.35

All (12) bond angle outliers are listed below:

Mol	Chain	Res	Type	Atoms	Z	Observed(°)	Ideal(°)
3	A	703	2VT	C18-N17-N16	-4.45	107.68	111.56
3	B	701	2VT	C18-N17-N16	-4.29	107.82	111.56
3	B	701	2VT	O12-C11-C7	-2.80	117.22	121.01
3	A	703	2VT	C20-C19-N17	-2.44	108.58	112.17
3	B	701	2VT	C11-C7-N8	2.20	126.38	120.54
3	A	703	2VT	C11-C7-N8	2.28	126.61	120.54
3	B	701	2VT	C3-C4-N9	2.46	134.37	130.22
3	A	703	2VT	C3-C4-N9	2.46	134.37	130.22
3	B	701	2VT	C15-N16-N17	3.86	108.23	104.24
3	A	703	2VT	C15-N16-N17	3.97	108.36	104.24
3	A	703	2VT	C7-C11-N13	4.69	120.19	113.70
3	B	701	2VT	C7-C11-N13	5.66	121.55	113.70

There are no chirality outliers.

There are no torsion outliers.

There are no ring outliers.

2 monomers are involved in 2 short contacts:

Mol	Chain	Res	Type	Clashes	Symm-Clashes
3	A	703	2VT	1	0

Continued on next page...

Continued from previous page...

Mol	Chain	Res	Type	Clashes	Symm-Clashes
3	B	701	2VT	1	0

5.7 Other polymers [i](#)

There are no such residues in this entry.

5.8 Polymer linkage issues [i](#)

There are no chain breaks in this entry.

6 Fit of model and data ⓘ

6.1 Protein, DNA and RNA chains ⓘ

In the following table, the column labelled ‘#RSRZ> 2’ contains the number (and percentage) of RSRZ outliers, followed by percent RSRZ outliers for the chain as percentile scores relative to all X-ray entries and entries of similar resolution. The OWAB column contains the minimum, median, 95th percentile and maximum values of the occupancy-weighted average B-factor per residue. The column labelled ‘Q< 0.9’ lists the number of (and percentage) of residues with an average occupancy less than 0.9.

Mol	Chain	Analysed	<RSRZ>	#RSRZ>2	OWAB(Å ²)	Q<0.9
1	A	246/266 (92%)	0.63	21 (8%) 13 10	26, 41, 65, 105	0
1	B	247/266 (92%)	0.63	26 (10%) 8 6	27, 42, 67, 97	0
All	All	493/532 (92%)	0.63	47 (9%) 10 7	26, 42, 66, 105	0

All (47) RSRZ outliers are listed below:

Mol	Chain	Res	Type	RSRZ
1	A	617	GLU	6.3
1	B	396	GLY	5.7
1	A	427	GLU	4.8
1	B	404	ILE	4.8
1	B	397	ALA	4.7
1	B	427	GLU	4.6
1	B	619	GLY	4.2
1	B	617	GLU	4.1
1	B	573	THR	4.0
1	A	428	GLN	3.9
1	A	619	GLY	3.8
1	A	384	ASN	3.8
1	A	492	GLU	3.8
1	B	428	GLN	3.8
1	A	404	ILE	3.6
1	B	384	ASN	3.5
1	B	395	GLU	3.4
1	A	397	ALA	3.3
1	B	399	SER	3.3
1	B	530	PHE	3.1
1	B	374	PHE	3.0
1	B	618	SER	3.0
1	A	449	THR	2.9
1	A	395	GLU	2.9

Continued on next page...

Continued from previous page...

Mol	Chain	Res	Type	RSRZ
1	A	530	PHE	2.8
1	A	466	VAL	2.7
1	B	401	GLU	2.7
1	B	597	GLU	2.7
1	B	449	THR	2.7
1	B	492	GLU	2.6
1	A	454	PHE	2.5
1	B	431	ILE	2.4
1	A	453	LEU	2.4
1	A	618	SER	2.4
1	A	521	PRO	2.3
1	A	396	GLY	2.3
1	B	615	ILE	2.3
1	A	356	SER	2.3
1	A	374	PHE	2.3
1	B	452	GLY	2.2
1	A	593	HIS	2.1
1	B	569	GLU	2.1
1	B	453	LEU	2.1
1	B	598	ARG	2.1
1	B	593	HIS	2.1
1	A	586	HIS	2.0
1	B	356	SER	2.0

6.2 Non-standard residues in protein, DNA, RNA chains [i](#)

There are no non-standard protein/DNA/RNA residues in this entry.

6.3 Carbohydrates [i](#)

There are no carbohydrates in this entry.

6.4 Ligands [i](#)

In the following table, the Atoms column lists the number of modelled atoms in the group and the number defined in the chemical component dictionary. LLDF column lists the quality of electron density of the group with respect to its neighbouring residues in protein, DNA or RNA chains. The B-factors column lists the minimum, median, 95th percentile and maximum values of B factors of atoms in the group. The column labelled 'Q< 0.9' lists the number of atoms with occupancy less than 0.9.

Mol	Type	Chain	Res	Atoms	RSCC	RSR	LLDF	B-factors(\AA^2)	Q<0.9
3	2VT	A	703	26/26	0.94	0.15	-0.49	26,29,43,48	0
2	SO4	A	701	5/5	0.90	0.17	-0.58	107,108,108,108	0
3	2VT	B	701	26/26	0.96	0.13	-0.90	21,26,42,45	0
2	SO4	A	702	5/5	0.93	0.15	-1.73	107,107,108,108	0

6.5 Other polymers [i](#)

There are no such residues in this entry.