



Full wwPDB X-ray Structure Validation Report ⓘ

Feb 1, 2016 – 07:42 PM GMT

PDB ID : 4PPH
Title : Crystal structure of conglutin gamma, a unique basic 7S globulin from lupine seeds
Authors : Czubinski, J.; Barciszewski, J.; Gilski, M.; Lampart-Szczapa, E.; Jaskolski, M.
Deposited on : 2014-02-27
Resolution : 2.01 Å(reported)

This is a Full wwPDB X-ray Structure Validation Report for a publicly released PDB entry.
We welcome your comments at validation@mail.wwpdb.org
A user guide is available at
<http://wwpdb.org/validation/2016/XrayValidationReportHelp>
with specific help available everywhere you see the ⓘ symbol.

The following versions of software and data (see [references ⓘ](#)) were used in the production of this report:

MolProbity : 4.02b-467
Mogul : 1.7 (RC4), CSD as536be (2015)
Xtriage (Phenix) : 1.9-1692
EDS : rb-20026688
Percentile statistics : 20151230.v01 (using entries in the PDB archive December 30th 2015)
Refmac : 5.8.0135
CCP4 : 6.5.0
Ideal geometry (proteins) : Engh & Huber (2001)
Ideal geometry (DNA, RNA) : Parkinson et al. (1996)
Validation Pipeline (wwPDB-VP) : trunk26865

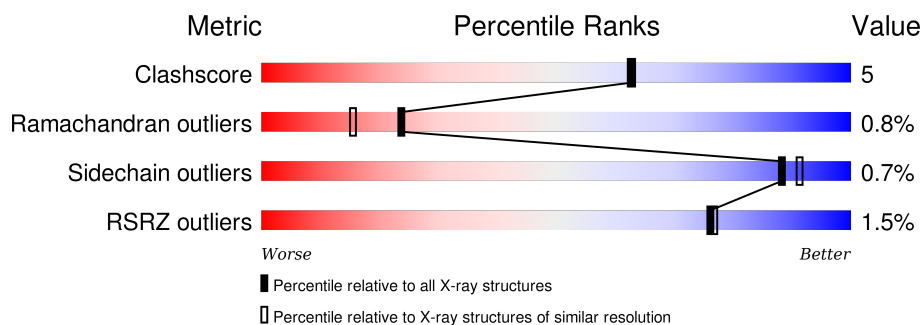
1 Overall quality at a glance

The following experimental techniques were used to determine the structure:

X-RAY DIFFRACTION

The reported resolution of this entry is 2.01 Å.

Percentile scores (ranging between 0-100) for global validation metrics of the entry are shown in the following graphic. The table shows the number of entries on which the scores are based.



Metric	Whole archive (#Entries)	Similar resolution (#Entries, resolution range(Å))
Clashscore	102246	7340 (2.00-2.00)
Ramachandran outliers	100387	7248 (2.00-2.00)
Sidechain outliers	100360	7247 (2.00-2.00)
RSRZ outliers	91569	6262 (2.00-2.00)

The table below summarises the geometric issues observed across the polymeric chains and their fit to the electron density. The red, orange, yellow and green segments on the lower bar indicate the fraction of residues that contain outliers for ≥ 3 , 2, 1 and 0 types of geometric quality criteria. A grey segment represents the fraction of residues that are not modelled. The numeric value for each fraction is indicated below the corresponding segment, with a dot representing fractions $\leq 5\%$. The upper red bar (where present) indicates the fraction of residues that have poor fit to the electron density. The numeric value is given above the bar.

Mol	Chain	Length	Quality of chain
1	A	417	<div> <div>84%</div> <div>9%</div> <div>6%</div> </div>
1	B	417	<div> <div>83%</div> <div>10%</div> <div>6%</div> </div>
1	C	417	<div> <div>83%</div> <div>11%</div> <div>6%</div> </div>
1	D	417	<div> <div>81%</div> <div>13%</div> <div>6%</div> </div>
1	E	417	<div> <div>4%</div> <div>82%</div> <div>11%</div> <div>6%</div> </div>
1	F	417	<div> <div>85%</div> <div>9%</div> <div>6%</div> </div>

The following table lists non-polymeric compounds, carbohydrate monomers and non-standard residues in protein, DNA, RNA chains that are outliers for geometric or electron-density-fit criteria:

Mol	Type	Chain	Res	Chirality	Geometry	Clashes	Electron density
3	EDO	A	505	-	-	-	X
3	EDO	A	506	-	-	-	X
3	EDO	A	507	-	-	-	X
3	EDO	A	508	-	-	-	X
3	EDO	B	502	-	-	-	X
3	EDO	B	504	-	-	-	X
3	EDO	B	506	-	-	-	X
3	EDO	C	506	-	-	-	X
3	EDO	D	505	-	-	-	X
3	EDO	D	506	-	-	-	X
3	EDO	D	507	-	-	-	X
3	EDO	D	508	-	-	-	X
3	EDO	D	509	-	-	-	X
3	EDO	D	510	-	-	-	X
3	EDO	F	503	-	-	-	X
3	EDO	F	505	-	-	-	X
3	EDO	F	508	-	-	-	X
5	NAG	F	501	-	-	-	X

2 Entry composition

There are 6 unique types of molecules in this entry. The entry contains 19098 atoms, of which 0 are hydrogens and 0 are deuteriums.

In the tables below, the ZeroOcc column contains the number of atoms modelled with zero occupancy, the AltConf column contains the number of residues with at least one atom in alternate conformation and the Trace column contains the number of residues modelled with at most 2 atoms.

- Molecule 1 is a protein called Conglutin gamma.

Mol	Chain	Residues	Atoms					ZeroOcc	AltConf	Trace
1	A	390	Total	C	N	O	S	25	2	0
			2996	1887	529	563	17			
1	B	391	Total	C	N	O	S	26	7	0
			3020	1905	533	565	17			
1	C	392	Total	C	N	O	S	33	3	0
			3017	1900	534	566	17			
1	D	392	Total	C	N	O	S	30	2	0
			3017	1900	534	567	16			
1	E	391	Total	C	N	O	S	47	4	0
			3007	1895	530	565	17			
1	F	392	Total	C	N	O	S	46	3	0
			3011	1897	532	565	17			

- Molecule 2 is a polymer of unknown type called SUGAR (3-MER).

Mol	Chain	Residues	Atoms				ZeroOcc	AltConf
2	A	3	Total	C	N	O	0	0
			38	22	2	14		

- Molecule 3 is 1,2-ETHANEDIOL (three-letter code: EDO) (formula: C₂H₆O₂).



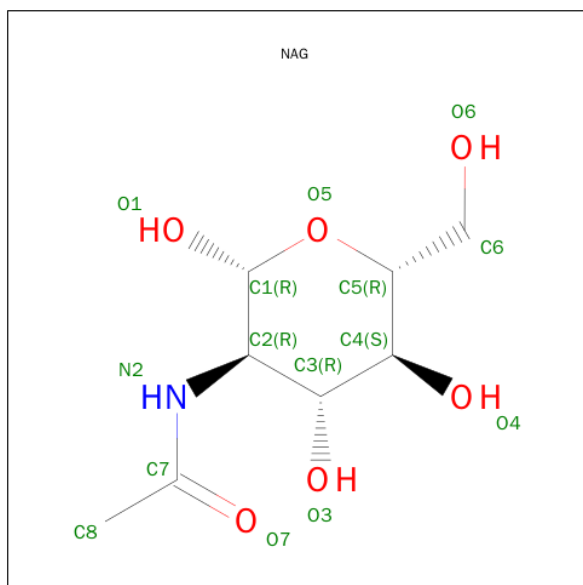
Mol	Chain	Residues	Atoms			ZeroOcc	AltConf
3	A	1	Total	C	O	0	0
			4	2	2		
3	A	1	Total	C	O	0	0
			4	2	2		
3	A	1	Total	C	O	0	0
			4	2	2		
3	A	1	Total	C	O	0	0
			4	2	2		
3	A	1	Total	C	O	0	0
			4	2	2		
3	B	1	Total	C	O	0	0
			4	2	2		
3	B	1	Total	C	O	0	0
			4	2	2		
3	B	1	Total	C	O	0	0
			4	2	2		
3	B	1	Total	C	O	0	0
			4	2	2		
3	C	1	Total	C	O	0	0
			4	2	2		
3	C	1	Total	C	O	0	0
			4	2	2		
3	C	1	Total	C	O	0	0
			4	2	2		

Continued on next page...

Continued from previous page...

Mol	Chain	Residues	Atoms			ZeroOcc	AltConf
3	C	1	Total	C	O	0	0
			4	2	2		
3	C	1	Total	C	O	0	0
			4	2	2		
3	D	1	Total	C	O	0	0
			4	2	2		
3	D	1	Total	C	O	0	0
			4	2	2		
3	D	1	Total	C	O	0	0
			4	2	2		
3	D	1	Total	C	O	0	0
			4	2	2		
3	D	1	Total	C	O	0	0
			4	2	2		
3	D	1	Total	C	O	0	0
			4	2	2		
3	D	1	Total	C	O	0	0
			4	2	2		
3	E	1	Total	C	O	0	0
			4	2	2		
3	F	1	Total	C	O	0	0
			4	2	2		
3	F	1	Total	C	O	0	0
			4	2	2		
3	F	1	Total	C	O	0	0
			4	2	2		
3	F	1	Total	C	O	0	0
			4	2	2		
3	F	1	Total	C	O	0	0
			4	2	2		

- Molecule 4 is SUGAR (N-ACETYL-D-GLUCOSAMINE) (three-letter code: NAG) (formula: $C_8H_{15}NO_6$).



Mol	Chain	Residues	Atoms				ZeroOcc	AltConf
4	B	1	Total	C	N	O	0	0
			14	8	1	5		
4	C	1	Total	C	N	O	0	0
			14	8	1	5		
4	D	1	Total	C	N	O	0	0
			14	8	1	5		

- Molecule 5 is a polymer of unknown type called SUGAR (2-MER).

Mol	Chain	Residues	Atoms				ZeroOcc	AltConf
5	F	2	Total	C	N	O	0	0
			28	16	2	10		

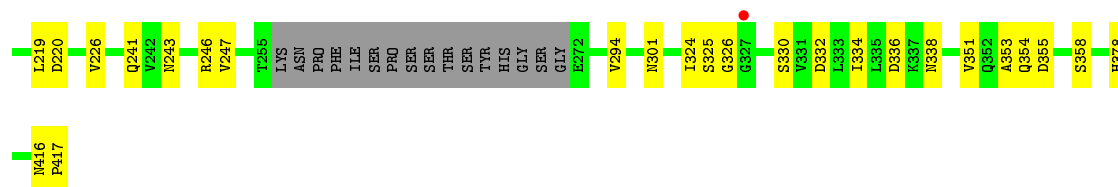
- Molecule 6 is water.

Mol	Chain	Residues	Atoms		ZeroOcc	AltConf
6	A	143	Total	O	0	0
			143	143		
6	B	146	Total	O	0	0
			146	146		
6	C	128	Total	O	0	0
			128	128		
6	D	124	Total	O	0	0
			124	124		
6	E	102	Total	O	0	0
			102	102		

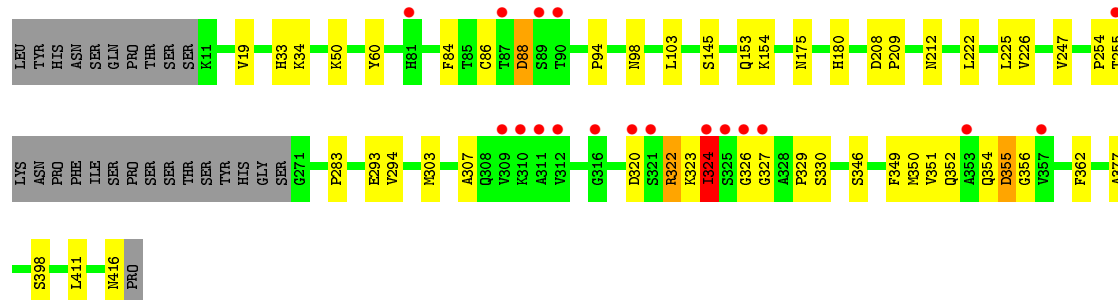
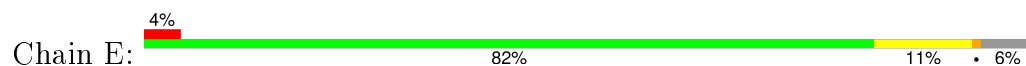
Continued on next page...

Continued from previous page...

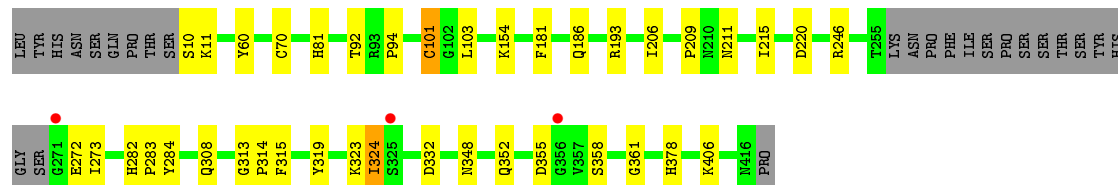
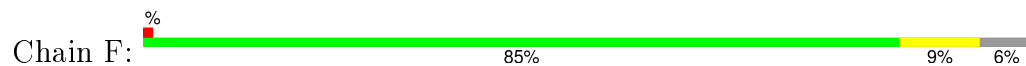
Mol	Chain	Residues	Atoms		ZeroOcc	AltConf
6	F	151	Total	O	0	0
			151	151		



• Molecule 1: Conglutin gamma



• Molecule 1: Conglutin gamma



4 Data and refinement statistics

Property	Value	Source
Space group	P 31	Depositor
Cell constants a, b, c, α , β , γ	121.99Å 121.99Å 188.49Å 90.00° 90.00° 120.00°	Depositor
Resolution (Å)	43.76 – 2.01 43.76 – 2.01	Depositor EDS
% Data completeness (in resolution range)	99.5 (43.76-2.01) 99.5 (43.76-2.01)	Depositor EDS
R_{merge}	0.07	Depositor
R_{sym}	(Not available)	Depositor
$\langle I/\sigma(I) \rangle$ ¹	1.62 (at 2.01Å)	Xtriage
Refinement program	PHENIX (phenix.refine: 1.8.3_1479)	Depositor
R, R_{free}	0.145 , 0.174 0.145 , (Not available)	Depositor DCC
R_{free} test set	No test flags present.	DCC
Wilson B-factor (Å ²)	35.5	Xtriage
Anisotropy	0.229	Xtriage
Bulk solvent k_{sol} (e/Å ³), B_{sol} (Å ²)	0.32 , 40.9	EDS
Estimated twinning fraction	0.098 for -h,-k,l 0.107 for h,-h-k,-l 0.248 for -k,-h,-l	Xtriage
L-test for twinning ²	$\langle L \rangle = 0.39$, $\langle L^2 \rangle = 0.21$	Xtriage
Outliers	0 of 208256 reflections	Xtriage
F_o, F_c correlation	0.98	EDS
Total number of atoms	19098	wwPDB-VP
Average B, all atoms (Å ²)	45.0	wwPDB-VP

Xtriage's analysis on translational NCS is as follows: *The largest off-origin peak in the Patterson function is 1.84% of the height of the origin peak. No significant pseudotranslation is detected.*

¹Intensities estimated from amplitudes.

²Theoretical values of $\langle |L| \rangle$, $\langle L^2 \rangle$ for acentric reflections are 0.5, 0.375 respectively for untwinned datasets, and 0.333, 0.2 for perfectly twinned datasets.

5 Model quality

5.1 Standard geometry

Bond lengths and bond angles in the following residue types are not validated in this section: FUC, EDO, NAG

The Z score for a bond length (or angle) is the number of standard deviations the observed value is removed from the expected value. A bond length (or angle) with $|Z| > 5$ is considered an outlier worth inspection. RMSZ is the root-mean-square of all Z scores of the bond lengths (or angles).

Mol	Chain	Bond lengths		Bond angles	
		RMSZ	# $ Z > 5$	RMSZ	# $ Z > 5$
1	A	0.52	0/3073	0.67	0/4180
1	B	0.54	1/3117 (0.0%)	0.67	0/4239
1	C	0.52	0/3096	0.68	0/4212
1	D	0.52	0/3092	0.70	0/4207
1	E	0.54	0/3092	0.72	0/4205
1	F	0.53	0/3093	0.68	0/4207
All	All	0.53	1/18563 (0.0%)	0.69	0/25250

All (1) bond length outliers are listed below:

Mol	Chain	Res	Type	Atoms	Z	Observed(Å)	Ideal(Å)
1	B	56	CYS	CB-SG	-5.09	1.73	1.81

There are no bond angle outliers.

There are no chirality outliers.

There are no planarity outliers.

5.2 Too-close contacts

In the following table, the Non-H and H(model) columns list the number of non-hydrogen atoms and hydrogen atoms in the chain respectively. The H(added) column lists the number of hydrogen atoms added and optimized by MolProbity. The Clashes column lists the number of clashes within the asymmetric unit, whereas Symm-Clashes lists symmetry related clashes.

Mol	Chain	Non-H	H(model)	H(added)	Clashes	Symm-Clashes
1	A	2996	0	2921	31	0
1	B	3020	0	2953	30	0
1	C	3017	0	2937	40	0
1	D	3017	0	2939	36	0

Continued on next page...

Continued from previous page...

Mol	Chain	Non-H	H(model)	H(added)	Clashes	Symm-Clashes
1	E	3007	0	2936	37	0
1	F	3011	0	2935	24	0
2	A	38	0	34	0	0
3	A	24	0	36	5	0
3	B	20	0	30	0	0
3	C	20	0	30	3	0
3	D	36	0	54	7	0
3	E	4	0	6	1	0
3	F	24	0	36	3	0
4	B	14	0	13	0	0
4	C	14	0	13	0	0
4	D	14	0	13	0	0
5	F	28	0	25	1	0
6	A	143	0	0	1	0
6	B	146	0	0	2	0
6	C	128	0	0	6	0
6	D	124	0	0	1	0
6	E	102	0	0	3	0
6	F	151	0	0	2	0
All	All	19098	0	17911	189	0

The all-atom clashscore is defined as the number of clashes found per 1000 atoms (including hydrogen atoms). The all-atom clashscore for this structure is 5.

All (189) close contacts within the same asymmetric unit are listed below, sorted by their clash magnitude.

Atom-1	Atom-2	Interatomic distance (Å)	Clash overlap (Å)
1:A:416:ASN:H	1:A:416:ASN:HD22	1.20	0.84
1:E:50:LYS:H	3:E:501:EDO:H11	1.43	0.84
1:E:175[A]:ASN:OD1	6:E:694:HOH:O	1.97	0.82
1:E:60:TYR:HB3	1:E:94:PRO:HG2	1.66	0.77
1:C:125:ILE:HA	3:C:506:EDO:H22	1.67	0.76
1:C:175[A]:ASN:OD1	6:C:727:HOH:O	2.04	0.75
1:C:352:GLN:NE2	1:C:354:GLN:O	2.20	0.75
1:B:175[A]:ASN:OD1	6:B:740:HOH:O	2.05	0.75
1:E:86:CYS:H	1:E:98:ASN:ND2	1.84	0.74
1:E:86:CYS:H	1:E:98:ASN:HD22	1.35	0.74
1:E:84:PHE:HE2	1:E:86:CYS:HB2	1.53	0.73
1:A:399:ASN:HB3	3:A:506:EDO:H21	1.71	0.72
1:C:325:SER:O	1:C:327:GLY:HA2	1.90	0.72
1:C:246:ARG:NH1	1:C:332:ASP:OD2	2.23	0.72

Continued on next page...

Continued from previous page...

Atom-1	Atom-2	Interatomic distance (Å)	Clash overlap (Å)
1:C:175[B]:ASN:OD1	6:C:723:HOH:O	2.07	0.72
1:D:103:LEU:HD23	1:D:145:SER:HB2	1.75	0.69
1:A:416:ASN:N	1:A:416:ASN:HD22	1.92	0.68
1:E:346:SER:HA	1:E:349:PHE:CE2	2.29	0.68
1:C:170:PRO:O	1:C:175[B]:ASN:ND2	2.27	0.67
1:E:84:PHE:CE2	1:E:86:CYS:HB2	2.29	0.67
1:A:103:LEU:HD23	1:A:145:SER:HB2	1.77	0.67
1:A:70:CYS:HA	1:A:101[B]:CYS:SG	2.36	0.66
1:F:284:TYR:H	3:F:504:EDO:H22	1.60	0.65
1:D:209:PRO:HB3	1:D:219:LEU:HD21	1.79	0.65
1:F:220:ASP:HB2	6:F:743:HOH:O	1.97	0.65
1:B:323:LYS:O	1:B:325:SER:N	2.30	0.64
1:C:32:ILE:HG13	1:C:43:LEU:HD12	1.79	0.64
1:B:186:GLN:HE22	1:B:206:ILE:HG12	1.62	0.64
1:B:74:GLN:HG3	3:C:502:EDO:H21	1.79	0.64
1:A:89:SER:HB2	1:A:93:ARG:CZ	2.28	0.63
1:A:354:GLN:HB3	1:A:355:ASP:OD1	2.03	0.59
1:B:246:ARG:NH1	1:B:332:ASP:OD2	2.34	0.59
1:B:99:ASN:HD21	1:C:271:GLY:HA3	1.69	0.58
1:D:88:ASP:OD1	1:D:89:SER:N	2.34	0.58
1:F:246:ARG:NH1	1:F:332:ASP:OD2	2.36	0.57
1:D:246:ARG:NH1	1:D:332:ASP:OD2	2.36	0.57
1:E:355:ASP:OD1	1:E:356:GLY:N	2.30	0.57
1:E:254:PRO:O	1:E:255:THR:OG1	2.22	0.57
1:C:70:CYS:HA	1:C:101[B]:CYS:SG	2.45	0.57
1:A:175[B]:ASN:ND2	6:A:735:HOH:O	2.17	0.56
1:B:32:ILE:HG13	1:B:43:LEU:HD12	1.87	0.56
1:C:332:ASP:HB3	1:C:341:VAL:CG1	2.36	0.55
1:B:43:LEU:HD21	1:B:54[B]:VAL:HG12	1.87	0.55
1:B:324:ILE:O	1:B:327:GLY:N	2.39	0.54
1:A:93:ARG:HG2	1:A:96:CYS:HB3	1.90	0.54
1:B:246:ARG:HD3	6:B:701:HOH:O	2.07	0.53
1:F:272:GLU:OE1	1:F:273:ILE:N	2.40	0.53
1:F:11:LYS:HE3	1:F:181:PHE:O	2.08	0.53
1:F:308:GLN:HG2	1:F:319:TYR:CE2	2.43	0.53
1:F:186:GLN:HE22	1:F:206:ILE:HG12	1.73	0.53
1:C:332:ASP:HB3	1:C:341:VAL:HG13	1.90	0.53
1:F:60:TYR:HB3	1:F:94:PRO:HG2	1.90	0.53
1:C:246:ARG:HH21	3:D:508:EDO:H12	1.74	0.53
1:A:32:ILE:HG13	1:A:43:LEU:HD12	1.90	0.53
1:B:70:CYS:HA	1:B:101[B]:CYS:SG	2.49	0.53

Continued on next page...

Continued from previous page...

Atom-1	Atom-2	Interatomic distance (Å)	Clash overlap (Å)
1:A:416:ASN:ND2	1:A:416:ASN:H	1.98	0.53
1:D:32:ILE:HG13	1:D:43:LEU:HD12	1.91	0.52
1:A:241:GLN:HB3	1:A:336:ASP:HB2	1.92	0.52
1:C:81:HIS:HD2	6:C:683:HOH:O	1.91	0.52
1:D:170:PRO:O	1:D:175[B]:ASN:ND2	2.44	0.51
1:C:103:LEU:HD23	1:C:145:SER:HB2	1.91	0.51
1:F:282:HIS:HB2	3:F:504:EDO:H21	1.93	0.51
1:E:324:ILE:O	1:E:326:GLY:N	2.41	0.50
1:E:180:HIS:HD2	6:E:671:HOH:O	1.94	0.50
1:E:346:SER:O	1:E:350:MET:HG2	2.12	0.50
1:C:169:ALA:O	1:C:175[A]:ASN:ND2	2.42	0.50
1:D:378[A]:HIS:HD2	3:D:505:EDO:H11	1.77	0.50
1:D:30:ALA:HA	3:D:502:EDO:H21	1.94	0.49
1:C:336:ASP:N	6:C:714:HOH:O	2.44	0.49
1:C:251:LEU:HD21	3:D:508:EDO:H11	1.93	0.49
1:E:283:PRO:HA	1:E:377:ALA:HB3	1.95	0.49
1:D:416:ASN:HD22	1:D:417:PRO:HD2	1.77	0.49
1:C:253:ILE:HD11	1:D:294:VAL:HG11	1.94	0.49
1:A:337:LYS:CB	1:A:339:ASP:OD2	2.60	0.49
1:F:315:PHE:CE1	1:F:361:GLY:HA2	2.48	0.49
1:A:11:LYS:HD3	1:F:11:LYS:HD3	1.95	0.48
1:E:153:GLN:HG2	1:E:154:LYS:HD2	1.95	0.48
1:E:293:GLU:HG3	1:E:294:VAL:N	2.28	0.48
1:E:153:GLN:HG2	1:E:154:LYS:CD	2.43	0.48
1:D:247:VAL:HA	1:D:330:SER:O	2.13	0.48
1:D:416:ASN:ND2	1:D:417:PRO:HD2	2.28	0.48
1:D:241:GLN:HB3	1:D:336:ASP:HB2	1.95	0.48
1:A:50:LYS:HB2	3:A:509:EDO:H12	1.94	0.48
1:A:244:ALA:HA	1:A:254:PRO:HD3	1.95	0.48
1:F:406:LYS:NZ	6:F:743:HOH:O	2.46	0.48
1:C:303:MET:SD	1:C:329:PRO:HD3	2.54	0.48
1:B:71:HIS:HD2	6:C:691:HOH:O	1.97	0.47
1:E:307:ALA:O	1:E:320:ASP:N	2.46	0.47
1:D:354:GLN:HB3	1:D:355:ASP:OD1	2.13	0.47
1:F:209:PRO:HA	1:F:215:ILE:HD11	1.95	0.47
1:B:241:GLN:HB3	1:B:336:ASP:HB2	1.97	0.47
1:F:186:GLN:NE2	1:F:206:ILE:HG12	2.29	0.47
1:C:336:ASP:HB3	3:C:504:EDO:H22	1.96	0.47
1:B:226:VAL:HG23	1:B:398:SER:HB3	1.95	0.47
1:B:315:PHE:CE1	1:B:361:GLY:HA2	2.50	0.47
1:D:58:GLN:HG3	1:D:59:HIS:N	2.30	0.47

Continued on next page...

Continued from previous page...

Atom-1	Atom-2	Interatomic distance (Å)	Clash overlap (Å)
1:A:337:LYS:HB3	1:A:339:ASP:OD2	2.14	0.47
1:C:253:ILE:HD12	1:D:294:VAL:HG21	1.97	0.47
1:D:325:SER:O	1:D:325:SER:OG	2.33	0.46
1:D:174:GLN:NE2	1:D:175[A]:ASN:OD1	2.48	0.46
1:C:209:PRO:HA	1:C:212:ASN:HB2	1.97	0.46
1:A:30:ALA:HA	3:A:507:EDO:H12	1.97	0.46
1:A:332:ASP:HB3	1:A:341:VAL:HG13	1.96	0.46
1:D:205:ASP:OD1	1:D:207:ASN:OD1	2.34	0.46
1:D:70:CYS:HA	1:D:101:CYS:SG	2.55	0.46
1:B:99:ASN:ND2	1:C:271:GLY:HA3	2.30	0.46
1:D:220:ASP:N	1:D:220:ASP:OD1	2.49	0.46
1:D:351:VAL:O	1:D:358:SER:HA	2.16	0.46
1:C:251:LEU:HD22	1:D:294:VAL:HG13	1.97	0.46
1:A:400:SER:H	3:A:506:EDO:H21	1.81	0.45
1:D:19:VAL:HG12	1:D:30:ALA:HB2	1.97	0.45
1:A:226:VAL:HG23	1:A:398:SER:HB3	1.98	0.45
1:E:324:ILE:C	1:E:326:GLY:H	2.20	0.45
1:E:153:GLN:HE21	1:E:154:LYS:HD3	1.80	0.45
1:D:172:SER:OG	1:D:175[A]:ASN:OD1	2.35	0.45
1:E:247:VAL:HA	1:E:330:SER:O	2.17	0.45
1:B:184:LYS:HZ3	1:B:186:GLN:HB2	1.81	0.45
1:B:249:LYS:HB3	1:B:249:LYS:HE2	1.71	0.45
1:E:153:GLN:O	1:E:154:LYS:HD2	2.16	0.45
1:C:337:LYS:HA	1:C:337:LYS:HD3	1.66	0.44
1:A:400:SER:H	3:A:506:EDO:C2	2.30	0.44
1:C:33:HIS:HA	1:C:39:MET:O	2.17	0.44
1:C:230:LEU:HD13	1:C:394:VAL:CG2	2.47	0.44
1:E:226:VAL:HG23	1:E:398:SER:HB3	2.00	0.44
1:E:86:CYS:SG	1:E:88:ASP:HB3	2.56	0.44
1:B:99:ASN:OD1	1:C:271:GLY:HA3	2.18	0.44
1:E:324:ILE:HD13	1:E:324:ILE:HA	1.61	0.44
1:A:234:LYS:HG2	1:F:81:HIS:CG	2.53	0.44
1:F:348:ASN:O	1:F:378[B]:HIS:CD2	2.71	0.44
1:C:346:SER:HA	1:C:349:PHE:CE2	2.53	0.44
1:C:60:TYR:HB3	1:C:94:PRO:HG2	1.99	0.44
1:C:22:ASP:OD2	1:C:25:THR:HG23	2.18	0.43
1:A:234:LYS:HE3	1:F:81:HIS:HB3	2.00	0.43
1:C:226:VAL:HG23	1:C:398:SER:HB3	2.00	0.43
1:B:58:GLN:HB2	1:B:59:HIS:H	1.47	0.43
1:E:209:PRO:O	1:E:212:ASN:HB2	2.19	0.43
1:D:156:LEU:O	3:D:506:EDO:H21	2.19	0.43

Continued on next page...

Continued from previous page...

Atom-1	Atom-2	Interatomic distance (Å)	Clash overlap (Å)
1:F:103:LEU:HA	1:F:103:LEU:HD12	1.85	0.43
1:B:233:SER:HA	1:B:273:ILE:HD13	2.00	0.43
1:B:208:ASP:HA	1:B:209:PRO:HD2	1.82	0.43
1:C:132:LYS:HB3	1:C:132:LYS:HE3	1.55	0.43
1:E:346:SER:HA	1:E:349:PHE:CZ	2.54	0.43
1:F:272:GLU:CD	1:F:273:ILE:H	2.22	0.42
1:C:355:ASP:OD1	1:C:355:ASP:N	2.50	0.42
1:A:158:ASN:O	1:A:159:ASN:HB2	2.18	0.42
1:E:222:LEU:HA	1:E:225:LEU:HG	2.01	0.42
1:D:301:ASN:ND2	3:D:508:EDO:H21	2.34	0.42
1:F:352:GLN:HE21	1:F:358:SER:HB2	1.84	0.42
1:D:166:LEU:HD21	1:D:173:LEU:HD23	2.01	0.42
1:D:226:VAL:HG21	3:D:509:EDO:H21	2.02	0.42
1:B:34:LYS:HB3	1:B:34:LYS:HE2	1.71	0.42
1:D:324:ILE:C	1:D:326:GLY:H	2.21	0.42
1:D:243:ASN:N	1:D:334:ILE:O	2.49	0.42
1:A:355:ASP:CG	1:A:356:GLY:H	2.23	0.42
1:E:411:LEU:HA	1:E:411:LEU:HD23	1.96	0.42
1:B:230:LEU:HD13	1:B:394:VAL:CG2	2.50	0.42
1:C:32:ILE:HD11	1:C:164:LEU:HD22	2.02	0.42
1:E:34:LYS:HE2	1:E:34:LYS:HB3	1.79	0.42
1:C:131:SER:HA	1:C:214:TYR:HA	2.00	0.42
1:C:179:SER:HB3	6:C:723:HOH:O	2.20	0.41
1:F:283:PRO:HD2	3:F:504:EDO:H21	2.01	0.41
1:E:303:MET:SD	1:E:329:PRO:HD3	2.60	0.41
1:B:253:ILE:HA	1:B:254:PRO:HD3	1.89	0.41
1:A:211:ASN:O	1:A:215:ILE:HG13	2.20	0.41
1:C:324:ILE:O	1:C:325:SER:OG	2.34	0.41
1:A:230:LEU:HD13	1:A:394:VAL:CG2	2.50	0.41
1:F:92:THR:HG22	5:F:501:NAG:H81	2.02	0.41
1:D:86:CYS:N	1:D:98:ASN:OD1	2.43	0.41
1:D:71:HIS:HA	6:D:671:HOH:O	2.20	0.41
1:B:184:LYS:NZ	1:B:186:GLN:HB2	2.35	0.41
1:C:132:LYS:HD2	1:C:413:ASP:OD2	2.21	0.41
1:E:352:GLN:HG3	1:E:354:GLN:O	2.20	0.41
1:D:208:ASP:HA	1:D:209:PRO:HD2	1.71	0.41
1:E:208:ASP:HA	1:E:209:PRO:HD2	1.71	0.41
1:A:220:ASP:N	1:A:220:ASP:OD1	2.53	0.41
1:E:349:PHE:HB2	1:E:362:PHE:CE1	2.56	0.41
1:B:33:HIS:HA	1:B:39:MET:O	2.21	0.41
1:F:70:CYS:HA	1:F:101[A]:CYS:SG	2.60	0.41

Continued on next page...

Continued from previous page...

Atom-1	Atom-2	Interatomic distance (Å)	Clash overlap (Å)
1:B:110:THR:O	1:B:111:GLN:HB2	2.20	0.41
1:E:103:LEU:HD23	1:E:145:SER:HB2	2.02	0.41
1:A:208:ASP:HA	1:A:209:PRO:HD2	1.72	0.40
1:B:303:MET:CE	1:B:324:ILE:HD12	2.52	0.40
1:F:313:GLY:HA3	1:F:314:PRO:HD2	1.99	0.40
1:B:323:LYS:C	1:B:325:SER:H	2.23	0.40
1:A:89:SER:HB2	1:A:93:ARG:NH1	2.37	0.40
1:D:166:LEU:HD23	1:D:173:LEU:HB3	2.04	0.40
1:E:19[B]:VAL:HG23	6:E:607:HOH:O	2.22	0.40
1:D:33:HIS:HA	1:D:39:MET:O	2.21	0.40

There are no symmetry-related clashes.

5.3 Torsion angles

5.3.1 Protein backbone

In the following table, the Percentiles column shows the percent Ramachandran outliers of the chain as a percentile score with respect to all X-ray entries followed by that with respect to entries of similar resolution.

The Analysed column shows the number of residues for which the backbone conformation was analysed, and the total number of residues.

Mol	Chain	Analysed	Favoured	Allowed	Outliers	Percentiles	
1	A	388/417 (93%)	374 (96%)	13 (3%)	1 (0%)	46	41
1	B	394/417 (94%)	378 (96%)	13 (3%)	3 (1%)	24	15
1	C	391/417 (94%)	378 (97%)	12 (3%)	1 (0%)	46	41
1	D	390/417 (94%)	373 (96%)	13 (3%)	4 (1%)	19	11
1	E	391/417 (94%)	374 (96%)	11 (3%)	6 (2%)	13	5
1	F	391/417 (94%)	372 (95%)	16 (4%)	3 (1%)	24	15
All	All	2345/2502 (94%)	2249 (96%)	78 (3%)	18 (1%)	24	15

All (18) Ramachandran outliers are listed below:

Mol	Chain	Res	Type
1	A	355	ASP
1	B	58	GLN

Continued on next page...

Continued from previous page...

Mol	Chain	Res	Type
1	D	58	GLN
1	D	338	ASN
1	E	88	ASP
1	E	324	ILE
1	F	323	LYS
1	F	355	ASP
1	B	324	ILE
1	C	325	SER
1	D	11	LYS
1	E	322	ARG
1	E	355	ASP
1	E	323	LYS
1	B	355	ASP
1	D	353	ALA
1	F	324	ILE
1	E	327	GLY

5.3.2 Protein sidechains ⓘ

In the following table, the Percentiles column shows the percent sidechain outliers of the chain as a percentile score with respect to all X-ray entries followed by that with respect to entries of similar resolution.

The Analysed column shows the number of residues for which the sidechain conformation was analysed, and the total number of residues.

Mol	Chain	Analysed	Rotameric	Outliers	Percentiles	
1	A	339/362 (94%)	337 (99%)	2 (1%)	90	93
1	B	344/362 (95%)	342 (99%)	2 (1%)	90	93
1	C	341/362 (94%)	341 (100%)	0	100	100
1	D	341/362 (94%)	340 (100%)	1 (0%)	94	96
1	E	341/362 (94%)	337 (99%)	4 (1%)	78	81
1	F	341/362 (94%)	334 (98%)	7 (2%)	61	63
All	All	2047/2172 (94%)	2031 (99%)	16 (1%)	88	89

All (16) residues with a non-rotameric sidechain are listed below:

Mol	Chain	Res	Type
1	A	161	GLN
1	A	416	ASN

Continued on next page...

Continued from previous page...

Mol	Chain	Res	Type
1	B	54[A]	VAL
1	B	54[B]	VAL
1	D	149	SER
1	E	322	ARG
1	E	324	ILE
1	E	351	VAL
1	E	416	ASN
1	F	10	SER
1	F	101[A]	CYS
1	F	101[B]	CYS
1	F	154	LYS
1	F	193	ARG
1	F	211	ASN
1	F	324	ILE

Some sidechains can be flipped to improve hydrogen bonding and reduce clashes. All (9) such sidechains are listed below:

Mol	Chain	Res	Type
1	A	126	HIS
1	A	416	ASN
1	D	416	ASN
1	E	33	HIS
1	E	98	ASN
1	E	153	GLN
1	E	213	ASN
1	E	368	HIS
1	F	352	GLN

5.3.3 RNA ⓘ

There are no RNA molecules in this entry.

5.4 Non-standard residues in protein, DNA, RNA chains ⓘ

There are no non-standard protein/DNA/RNA residues in this entry.

5.5 Carbohydrates ⓘ

5 carbohydrates are modelled in this entry.

In the following table, the Counts columns list the number of bonds (or angles) for which Mogul statistics could be retrieved, the number of bonds (or angles) that are observed in the model and the number of bonds (or angles) that are defined in the chemical component dictionary. The Link column lists molecule types, if any, to which the group is linked. The Z score for a bond length (or angle) is the number of standard deviations the observed value is removed from the expected value. A bond length (or angle) with $|Z| > 2$ is considered an outlier worth inspection. RMSZ is the root-mean-square of all Z scores of the bond lengths (or angles).

Mol	Type	Chain	Res	Link	Bond lengths			Bond angles		
					Counts	RMSZ	$\# Z > 2$	Counts	RMSZ	$\# Z > 2$
2	NAG	A	501	1,2	14,14,15	0.86	1 (7%)	15,19,21	0.62	0
2	NAG	A	502	2	14,14,15	0.48	0	15,19,21	0.54	0
2	FUC	A	503	2	10,10,11	1.28	1 (10%)	14,14,16	1.13	2 (14%)
5	NAG	F	501	1,5	14,14,15	0.91	1 (7%)	15,19,21	0.46	0
5	NAG	F	502	5	14,14,15	0.64	0	15,19,21	0.36	0

In the following table, the Chirals column lists the number of chiral outliers, the number of chiral centers analysed, the number of these observed in the model and the number defined in the chemical component dictionary. Similar counts are reported in the Torsion and Rings columns. '-' means no outliers of that kind were identified.

Mol	Type	Chain	Res	Link	Chirals	Torsions	Rings
2	NAG	A	501	1,2	-	0/6/23/26	0/1/1/1
2	NAG	A	502	2	-	0/6/23/26	0/1/1/1
2	FUC	A	503	2	-	0/0/17/20	0/1/1/1
5	NAG	F	501	1,5	-	0/6/23/26	0/1/1/1
5	NAG	F	502	5	-	0/6/23/26	0/1/1/1

All (3) bond length outliers are listed below:

Mol	Chain	Res	Type	Atoms	Z	Observed(Å)	Ideal(Å)
5	F	501	NAG	O5-C1	-2.88	1.38	1.43
2	A	503	FUC	C4-C5	2.68	1.58	1.52
2	A	501	NAG	O5-C1	2.87	1.48	1.43

All (2) bond angle outliers are listed below:

Mol	Chain	Res	Type	Atoms	Z	Observed(°)	Ideal(°)
2	A	503	FUC	O2-C2-C1	2.00	113.22	109.21
2	A	503	FUC	O5-C1-C2	2.23	114.47	110.86

There are no chirality outliers.

There are no torsion outliers.

There are no ring outliers.

1 monomer is involved in 1 short contact:

Mol	Chain	Res	Type	Clashes	Symm-Clashes
5	F	501	NAG	1	0

5.6 Ligand geometry [i](#)

35 ligands are modelled in this entry.

In the following table, the Counts columns list the number of bonds (or angles) for which Mogul statistics could be retrieved, the number of bonds (or angles) that are observed in the model and the number of bonds (or angles) that are defined in the chemical component dictionary. The Link column lists molecule types, if any, to which the group is linked. The Z score for a bond length (or angle) is the number of standard deviations the observed value is removed from the expected value. A bond length (or angle) with $|Z| > 2$ is considered an outlier worth inspection. RMSZ is the root-mean-square of all Z scores of the bond lengths (or angles).

Mol	Type	Chain	Res	Link	Bond lengths			Bond angles		
					Counts	RMSZ	$\# Z > 2$	Counts	RMSZ	$\# Z > 2$
3	EDO	A	504	-	3,3,3	0.55	0	2,2,2	0.17	0
3	EDO	A	505	-	3,3,3	0.58	0	2,2,2	0.11	0
3	EDO	A	506	-	3,3,3	0.31	0	2,2,2	0.41	0
3	EDO	A	507	-	3,3,3	0.40	0	2,2,2	0.60	0
3	EDO	A	508	-	3,3,3	0.40	0	2,2,2	0.73	0
3	EDO	A	509	-	3,3,3	0.53	0	2,2,2	0.17	0
4	NAG	B	501	1	14,14,15	0.42	0	15,19,21	0.47	0
3	EDO	B	502	-	3,3,3	0.43	0	2,2,2	0.43	0
3	EDO	B	503	-	3,3,3	0.40	0	2,2,2	0.36	0
3	EDO	B	504	-	3,3,3	0.51	0	2,2,2	0.32	0
3	EDO	B	505	-	3,3,3	0.46	0	2,2,2	0.29	0
3	EDO	B	506	-	3,3,3	0.48	0	2,2,2	0.50	0
4	NAG	C	501	1	14,14,15	0.43	0	15,19,21	0.35	0
3	EDO	C	502	-	3,3,3	0.47	0	2,2,2	0.26	0
3	EDO	C	503	-	3,3,3	0.48	0	2,2,2	0.22	0
3	EDO	C	504	-	3,3,3	0.50	0	2,2,2	0.42	0
3	EDO	C	505	-	3,3,3	0.38	0	2,2,2	0.72	0
3	EDO	C	506	-	3,3,3	0.60	0	2,2,2	0.15	0
4	NAG	D	501	1	14,14,15	0.79	1 (7%)	15,19,21	0.63	0
3	EDO	D	502	-	3,3,3	0.37	0	2,2,2	0.79	0
3	EDO	D	503	-	3,3,3	0.51	0	2,2,2	0.34	0
3	EDO	D	504	-	3,3,3	0.41	0	2,2,2	0.29	0
3	EDO	D	505	-	3,3,3	0.52	0	2,2,2	0.30	0
3	EDO	D	506	-	3,3,3	0.47	0	2,2,2	0.14	0
3	EDO	D	507	-	3,3,3	0.58	0	2,2,2	0.31	0

Mol	Type	Chain	Res	Link	Bond lengths			Bond angles		
					Counts	RMSZ	# Z > 2	Counts	RMSZ	# Z > 2
3	EDO	D	508	-	3,3,3	0.66	0	2,2,2	0.06	0
3	EDO	D	509	-	3,3,3	0.56	0	2,2,2	0.19	0
3	EDO	D	510	-	3,3,3	0.47	0	2,2,2	0.58	0
3	EDO	E	501	-	3,3,3	0.54	0	2,2,2	0.51	0
3	EDO	F	503	-	3,3,3	0.43	0	2,2,2	0.90	0
3	EDO	F	504	-	3,3,3	0.50	0	2,2,2	0.34	0
3	EDO	F	505	-	3,3,3	0.39	0	2,2,2	0.74	0
3	EDO	F	506	-	3,3,3	0.39	0	2,2,2	0.31	0
3	EDO	F	507	-	3,3,3	0.53	0	2,2,2	0.13	0
3	EDO	F	508	-	3,3,3	0.43	0	2,2,2	0.35	0

In the following table, the Chirals column lists the number of chiral outliers, the number of chiral centers analysed, the number of these observed in the model and the number defined in the chemical component dictionary. Similar counts are reported in the Torsion and Rings columns. '-' means no outliers of that kind were identified.

Mol	Type	Chain	Res	Link	Chirals	Torsions	Rings
3	EDO	A	504	-	-	0/1/1/1	0/0/0/0
3	EDO	A	505	-	-	0/1/1/1	0/0/0/0
3	EDO	A	506	-	-	0/1/1/1	0/0/0/0
3	EDO	A	507	-	-	0/1/1/1	0/0/0/0
3	EDO	A	508	-	-	0/1/1/1	0/0/0/0
3	EDO	A	509	-	-	0/1/1/1	0/0/0/0
4	NAG	B	501	1	-	0/6/23/26	0/1/1/1
3	EDO	B	502	-	-	0/1/1/1	0/0/0/0
3	EDO	B	503	-	-	0/1/1/1	0/0/0/0
3	EDO	B	504	-	-	0/1/1/1	0/0/0/0
3	EDO	B	505	-	-	0/1/1/1	0/0/0/0
3	EDO	B	506	-	-	0/1/1/1	0/0/0/0
4	NAG	C	501	1	-	0/6/23/26	0/1/1/1
3	EDO	C	502	-	-	0/1/1/1	0/0/0/0
3	EDO	C	503	-	-	0/1/1/1	0/0/0/0
3	EDO	C	504	-	-	0/1/1/1	0/0/0/0
3	EDO	C	505	-	-	0/1/1/1	0/0/0/0
3	EDO	C	506	-	-	0/1/1/1	0/0/0/0
4	NAG	D	501	1	-	0/6/23/26	0/1/1/1
3	EDO	D	502	-	-	0/1/1/1	0/0/0/0
3	EDO	D	503	-	-	0/1/1/1	0/0/0/0
3	EDO	D	504	-	-	0/1/1/1	0/0/0/0
3	EDO	D	505	-	-	0/1/1/1	0/0/0/0
3	EDO	D	506	-	-	0/1/1/1	0/0/0/0
3	EDO	D	507	-	-	0/1/1/1	0/0/0/0
3	EDO	D	508	-	-	0/1/1/1	0/0/0/0

Continued on next page...

Continued from previous page...

Mol	Type	Chain	Res	Link	Chirals	Torsions	Rings
3	EDO	D	509	-	-	0/1/1/1	0/0/0/0
3	EDO	D	510	-	-	0/1/1/1	0/0/0/0
3	EDO	E	501	-	-	0/1/1/1	0/0/0/0
3	EDO	F	503	-	-	0/1/1/1	0/0/0/0
3	EDO	F	504	-	-	0/1/1/1	0/0/0/0
3	EDO	F	505	-	-	0/1/1/1	0/0/0/0
3	EDO	F	506	-	-	0/1/1/1	0/0/0/0
3	EDO	F	507	-	-	0/1/1/1	0/0/0/0
3	EDO	F	508	-	-	0/1/1/1	0/0/0/0

All (1) bond length outliers are listed below:

Mol	Chain	Res	Type	Atoms	Z	Observed(Å)	Ideal(Å)
4	D	501	NAG	O5-C1	2.65	1.48	1.43

There are no bond angle outliers.

There are no chirality outliers.

There are no torsion outliers.

There are no ring outliers.

13 monomers are involved in 19 short contacts:

Mol	Chain	Res	Type	Clashes	Symm-Clashes
3	A	506	EDO	3	0
3	A	507	EDO	1	0
3	A	509	EDO	1	0
3	C	502	EDO	1	0
3	C	504	EDO	1	0
3	C	506	EDO	1	0
3	D	502	EDO	1	0
3	D	505	EDO	1	0
3	D	506	EDO	1	0
3	D	508	EDO	3	0
3	D	509	EDO	1	0
3	E	501	EDO	1	0
3	F	504	EDO	3	0

5.7 Other polymers ⓘ

There are no such residues in this entry.

5.8 Polymer linkage issues ⓘ

There are no chain breaks in this entry.

6 Fit of model and data ⓘ

6.1 Protein, DNA and RNA chains ⓘ

In the following table, the column labelled ‘#RSRZ> 2’ contains the number (and percentage) of RSRZ outliers, followed by percent RSRZ outliers for the chain as percentile scores relative to all X-ray entries and entries of similar resolution. The OWAB column contains the minimum, median, 95th percentile and maximum values of the occupancy-weighted average B-factor per residue. The column labelled ‘Q< 0.9’ lists the number of (and percentage) of residues with an average occupancy less than 0.9.

Mol	Chain	Analysed	<RSRZ>	#RSRZ>2	OWAB(Å ²)	Q<0.9
1	A	390/417 (93%)	-0.47	3 (0%) 87 88	23, 41, 76, 99	5 (1%)
1	B	391/417 (93%)	-0.49	4 (1%) 84 84	20, 36, 73, 96	5 (1%)
1	C	392/417 (94%)	-0.44	4 (1%) 84 84	24, 41, 79, 96	7 (1%)
1	D	392/417 (94%)	-0.41	3 (0%) 87 88	25, 45, 79, 101	6 (1%)
1	E	389/417 (93%)	-0.30	18 (4%) 36 38	25, 45, 95, 134	7 (1%)
1	F	389/417 (93%)	-0.48	3 (0%) 87 88	23, 40, 77, 111	5 (1%)
All	All	2343/2502 (93%)	-0.43	35 (1%) 76 77	20, 42, 80, 134	35 (1%)

All (35) RSRZ outliers are listed below:

Mol	Chain	Res	Type	RSRZ
1	E	327	GLY	8.8
1	E	326	GLY	8.0
1	C	271	GLY	6.8
1	E	321	SER	5.2
1	D	10	SER	5.2
1	E	90	THR	4.7
1	A	353	ALA	4.4
1	E	87	THR	4.1
1	E	353	ALA	4.1
1	E	311	ALA	3.5
1	E	357	VAL	3.4
1	B	326	GLY	3.3
1	C	90	THR	3.2
1	D	327	GLY	3.2
1	C	59	HIS	2.9
1	C	417	PRO	2.9
1	E	325	SER	2.8
1	B	324	ILE	2.6
1	B	90	THR	2.6

Continued on next page...

Continued from previous page...

Mol	Chain	Res	Type	RSRZ
1	E	309	VAL	2.6
1	E	310	LYS	2.6
1	E	316	GLY	2.6
1	E	324	ILE	2.5
1	B	327	GLY	2.5
1	F	356	GLY	2.5
1	F	271	GLY	2.4
1	A	255	THR	2.3
1	E	320	ASP	2.3
1	E	89	SER	2.2
1	E	255	THR	2.1
1	F	325	SER	2.1
1	A	326	GLY	2.1
1	D	87	THR	2.1
1	E	312	VAL	2.1
1	E	81	HIS	2.0

6.2 Non-standard residues in protein, DNA, RNA chains [i](#)

There are no non-standard protein/DNA/RNA residues in this entry.

6.3 Carbohydrates [i](#)

In the following table, the Atoms column lists the number of modelled atoms in the group and the number defined in the chemical component dictionary. LLDF column lists the quality of electron density of the group with respect to its neighbouring residues in protein, DNA or RNA chains. The B-factors column lists the minimum, median, 95th percentile and maximum values of B factors of atoms in the group. The column labelled 'Q< 0.9' lists the number of atoms with occupancy less than 0.9.

Mol	Type	Chain	Res	Atoms	RSCC	RSR	LLDF	B-factors(\AA^2)	Q<0.9
5	NAG	F	501	14/15	0.86	0.17	3.22	55,65,75,85	0
2	NAG	A	501	14/15	0.88	0.13	1.93	57,67,74,80	0
5	NAG	F	502	14/15	0.83	0.22	-	91,94,98,99	0
2	NAG	A	502	14/15	0.72	0.28	-	86,92,93,94	0
2	FUC	A	503	10/11	0.86	0.15	-	64,71,82,83	0

6.4 Ligands [i](#)

In the following table, the Atoms column lists the number of modelled atoms in the group and the number defined in the chemical component dictionary. LLDF column lists the quality of electron

density of the group with respect to its neighbouring residues in protein, DNA or RNA chains. The B-factors column lists the minimum, median, 95th percentile and maximum values of B factors of atoms in the group. The column labelled 'Q< 0.9' lists the number of atoms with occupancy less than 0.9.

Mol	Type	Chain	Res	Atoms	RSCC	RSR	LLDF	B-factors(Å ²)	Q<0.9
3	EDO	D	510	4/4	0.82	0.30	26.83	53,54,55,58	0
3	EDO	A	508	4/4	0.89	0.21	13.65	51,55,56,56	0
3	EDO	F	505	4/4	0.86	0.27	12.72	58,60,60,60	0
3	EDO	D	507	4/4	0.82	0.29	11.95	57,58,58,59	0
3	EDO	A	505	4/4	0.91	0.25	9.44	47,50,52,52	0
3	EDO	C	506	4/4	0.86	0.17	8.85	44,50,55,56	0
3	EDO	B	506	4/4	0.93	0.13	6.26	36,37,37,39	0
3	EDO	B	502	4/4	0.94	0.14	5.69	52,52,53,55	0
3	EDO	B	504	4/4	0.90	0.15	4.54	49,49,51,56	0
3	EDO	D	506	4/4	0.93	0.26	4.29	53,54,54,55	0
3	EDO	D	505	4/4	0.89	0.15	3.48	47,47,50,54	0
3	EDO	A	506	4/4	0.98	0.12	3.33	37,37,40,40	0
3	EDO	D	508	4/4	0.95	0.15	3.26	51,51,52,52	0
3	EDO	D	509	4/4	0.93	0.26	2.95	54,57,60,61	0
3	EDO	A	507	4/4	0.97	0.12	2.62	41,41,44,47	0
3	EDO	F	503	4/4	0.91	0.14	2.25	44,45,49,53	0
3	EDO	F	508	4/4	0.93	0.17	2.10	46,47,50,52	0
4	NAG	C	501	14/15	0.65	0.27	1.95	69,78,83,83	0
3	EDO	C	502	4/4	0.90	0.11	1.95	57,57,57,58	0
3	EDO	B	503	4/4	0.97	0.10	1.88	32,32,33,34	0
3	EDO	D	503	4/4	0.88	0.10	1.23	49,49,52,55	0
3	EDO	D	502	4/4	0.96	0.11	1.09	46,47,48,48	0
3	EDO	A	509	4/4	0.95	0.09	0.84	40,41,41,41	0
3	EDO	F	507	4/4	0.91	0.10	0.70	53,53,55,55	0
3	EDO	D	504	4/4	0.96	0.10	0.59	34,35,36,36	0
3	EDO	E	501	4/4	0.95	0.09	0.59	32,35,39,41	0
4	NAG	B	501	14/15	0.78	0.15	0.56	61,69,74,74	0
3	EDO	C	505	4/4	0.97	0.09	0.15	36,38,38,40	0
4	NAG	D	501	14/15	0.91	0.12	-0.11	61,69,71,74	0
3	EDO	F	506	4/4	0.98	0.08	-0.68	28,29,30,31	0
3	EDO	A	504	4/4	0.94	0.07	-1.34	33,34,36,39	0
3	EDO	B	505	4/4	0.98	0.08	-1.69	27,31,33,33	0
3	EDO	C	503	4/4	0.97	0.06	-2.19	27,28,30,32	0
3	EDO	C	504	4/4	0.84	0.20	-	48,51,54,58	0
3	EDO	F	504	4/4	0.78	0.16	-	44,45,45,48	0

6.5 Other polymers

There are no such residues in this entry.