



Full wwPDB X-ray Structure Validation Report ⓘ

Feb 19, 2016 – 06:14 PM GMT

PDB ID : 1PS9
Title : The Crystal Structure and Reaction Mechanism of E. coli 2,4-Dienoyl CoA Reductase
Authors : Hubbard, P.A.; Liang, X.; Schulz, H.; Kim, J.J.
Deposited on : 2003-06-20
Resolution : 2.20 Å(reported)

This is a Full wwPDB X-ray Structure Validation Report for a publicly released PDB entry.
We welcome your comments at validation@mail.wwpdb.org
A user guide is available at
<http://wwpdb.org/validation/2016/XrayValidationReportHelp>
with specific help available everywhere you see the ⓘ symbol.

The following versions of software and data (see [references ⓘ](#)) were used in the production of this report:

MolProbity : 4.02b-467
Mogul : 1.7.1 (RC1), CSD as537be (2016)
Xtriage (Phenix) : 1.9-1692
EDS : rb-20026982
Percentile statistics : 20151230.v01 (using entries in the PDB archive December 30th 2015)
Refmac : 5.8.0135
CCP4 : 6.5.0
Ideal geometry (proteins) : Engh & Huber (2001)
Ideal geometry (DNA, RNA) : Parkinson et al. (1996)
Validation Pipeline (wwPDB-VP) : rb-20026982

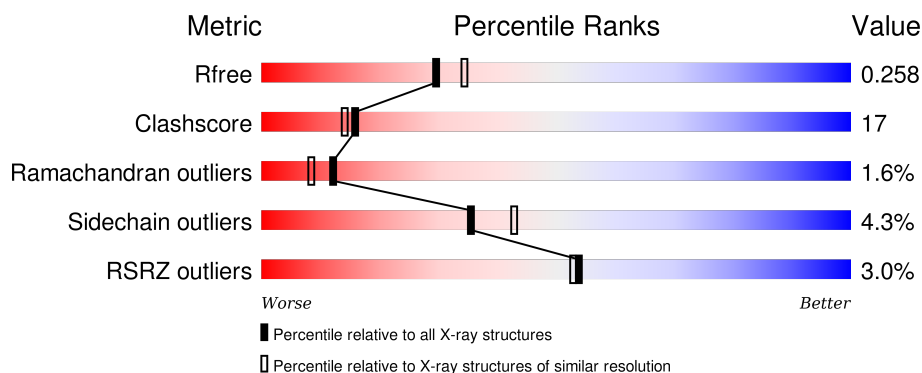
1 Overall quality at a glance

The following experimental techniques were used to determine the structure:

X-RAY DIFFRACTION

The reported resolution of this entry is 2.20 Å.

Percentile scores (ranging between 0-100) for global validation metrics of the entry are shown in the following graphic. The table shows the number of entries on which the scores are based.



Metric	Whole archive (#Entries)	Similar resolution (#Entries, resolution range(Å))
R_{free}	91344	3774 (2.20-2.20)
Clashscore	102246	4477 (2.20-2.20)
Ramachandran outliers	100387	4404 (2.20-2.20)
Sidechain outliers	100360	4405 (2.20-2.20)
RSRZ outliers	91569	3781 (2.20-2.20)

The table below summarises the geometric issues observed across the polymeric chains and their fit to the electron density. The red, orange, yellow and green segments on the lower bar indicate the fraction of residues that contain outliers for ≥ 3 , 2, 1 and 0 types of geometric quality criteria. A grey segment represents the fraction of residues that are not modelled. The numeric value for each fraction is indicated below the corresponding segment, with a dot representing fractions $\leq 5\%$. The upper red bar (where present) indicates the fraction of residues that have poor fit to the electron density. The numeric value is given above the bar.

Mol	Chain	Length	Quality of chain
1	A	671	<div> <div>3%</div> <div>68%</div> <div>29%</div> <div>.</div> </div>

The following table lists non-polymeric compounds, carbohydrate monomers and non-standard residues in protein, DNA, RNA chains that are outliers for geometric or electron-density-fit criteria:

Mol	Type	Chain	Res	Chirality	Geometry	Clashes	Electron density
7	MDE	A	704	X	-	-	-

2 Entry composition [i](#)

There are 8 unique types of molecules in this entry. The entry contains 5676 atoms, of which 0 are hydrogens and 0 are deuteriums.

In the tables below, the ZeroOcc column contains the number of atoms modelled with zero occupancy, the AltConf column contains the number of residues with at least one atom in alternate conformation and the Trace column contains the number of residues modelled with at most 2 atoms.

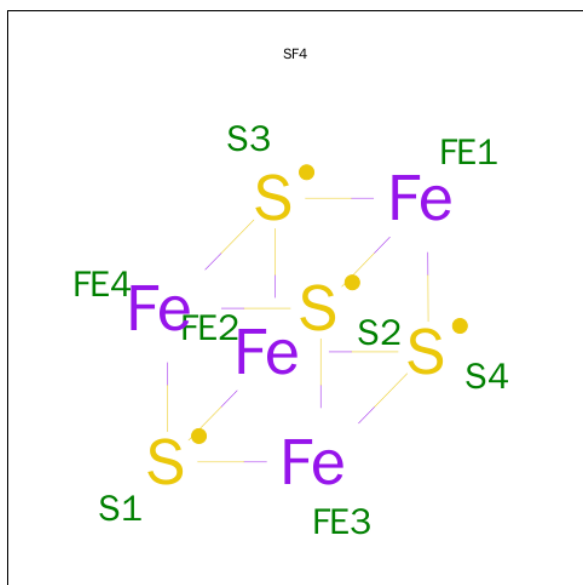
- Molecule 1 is a protein called 2,4-dienoyl-CoA reductase.

Mol	Chain	Residues	Atoms					ZeroOcc	AltConf	Trace
1	A	671	Total	C	N	O	S	0	0	0
			5097	3198	916	957	26			

- Molecule 2 is CHLORIDE ION (three-letter code: CL) (formula: Cl).

Mol	Chain	Residues	Atoms		ZeroOcc	AltConf
2	A	3	Total	Cl	0	0
			3	3		

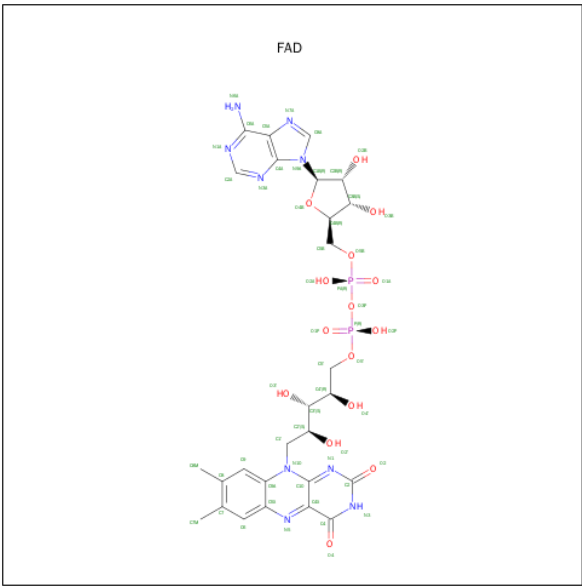
- Molecule 3 is IRON/SULFUR CLUSTER (three-letter code: SF4) (formula: Fe₄S₄).



Mol	Chain	Residues	Atoms			ZeroOcc	AltConf
3	A	1	Total	Fe	S	0	0
			8	4	4		

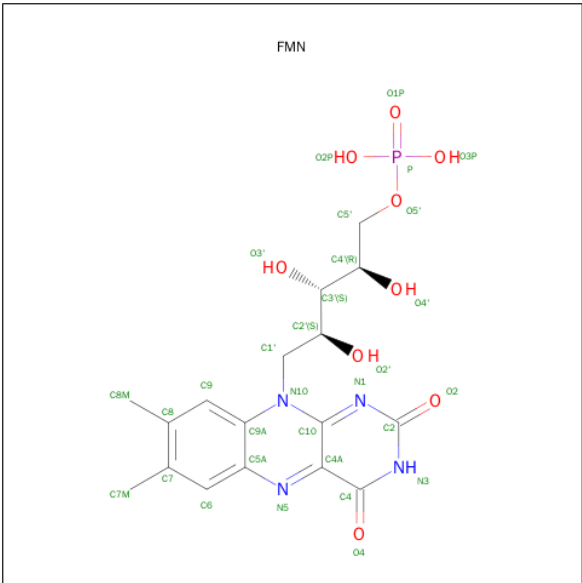
- Molecule 4 is FLAVIN-ADENINE DINUCLEOTIDE (three-letter code: FAD) (formula:

C₂₇H₃₃N₉O₁₅P₂).



Mol	Chain	Residues	Atoms					ZeroOcc	AltConf
4	A	1	Total	C	N	O	P	0	0
			53	27	9	15	2		

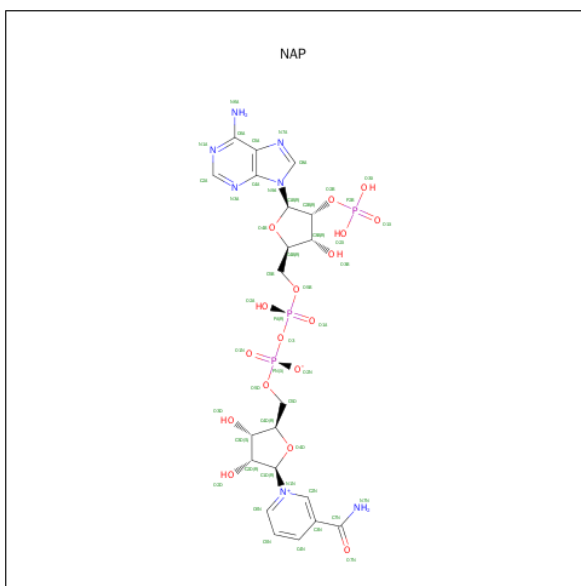
- Molecule 5 is FLAVIN MONONUCLEOTIDE (three-letter code: FMN) (formula: C₁₇H₂₁N₄O₉P).



Mol	Chain	Residues	Atoms					ZeroOcc	AltConf
5	A	1	Total	C	N	O	P	0	0
			31	17	4	9	1		

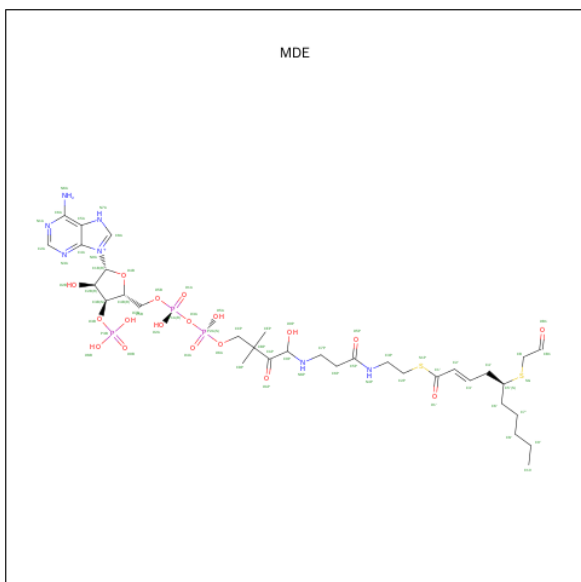
- Molecule 6 is NADP NICOTINAMIDE-ADENINE-DINUCLEOTIDE PHOSPHATE

(three-letter code: NAP) (formula: $C_{21}H_{28}N_7O_{17}P_3$).



Mol	Chain	Residues	Atoms					ZeroOcc	AltConf
6	A	1	Total	C	N	O	P	0	0
			48	21	7	17	3		

- Molecule 7 is 5-MERCAPTOETHANOL-2-DECENOYL-COENZYME A (three-letter code: MDE) (formula: $C_{33}H_{55}N_7O_{18}P_3S_2$).



Mol	Chain	Residues	Atoms					ZeroOcc	AltConf
7	A	1	Total	C	N	O	P S	0	0
			63	33	7	18	3 2		

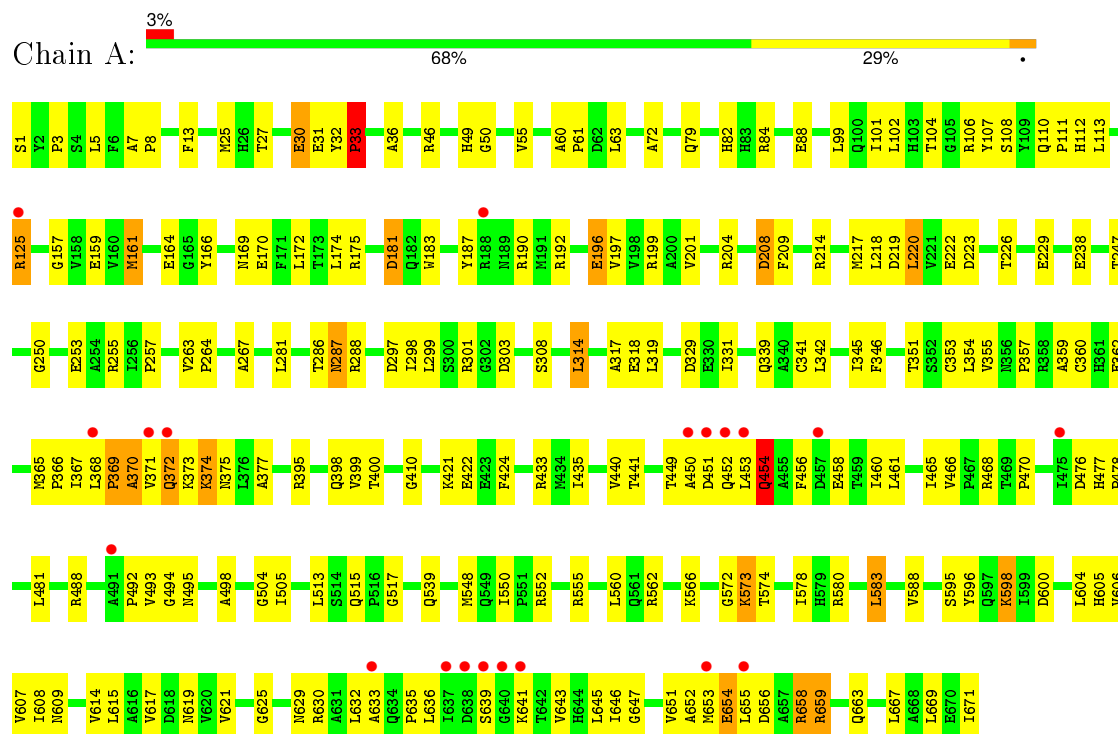
- Molecule 8 is water.

Mol	Chain	Residues	Atoms		ZeroOcc	AltConf
8	A	373	Total 373	O 373	0	0

3 Residue-property plots

These plots are drawn for all protein, RNA and DNA chains in the entry. The first graphic for a chain summarises the proportions of errors displayed in the second graphic. The second graphic shows the sequence view annotated by issues in geometry and electron density. Residues are color-coded according to the number of geometric quality criteria for which they contain at least one outlier: green = 0, yellow = 1, orange = 2 and red = 3 or more. A red dot above a residue indicates a poor fit to the electron density ($RSRZ > 2$). Stretches of 2 or more consecutive residues without any outlier are shown as a green connector. Residues present in the sample, but not in the model, are shown in grey.

- Molecule 1: 2,4-dienoyl-CoA reductase



4 Data and refinement statistics

Property	Value	Source
Space group	P 21 21 21	Depositor
Cell constants a, b, c, α , β , γ	65.60 Å 109.23 Å 110.30 Å 90.00° 90.00° 90.00°	Depositor
Resolution (Å)	30.00 – 2.20 27.66 – 2.19	Depositor EDS
% Data completeness (in resolution range)	93.7 (30.00-2.20) 95.4 (27.66-2.19)	Depositor EDS
R_{merge}	0.06	Depositor
R_{sym}	0.06	Depositor
$\langle I/\sigma(I) \rangle$ ¹	4.20 (at 2.20 Å)	Xtriage
Refinement program	CNS	Depositor
R, R_{free}	0.203 , 0.243 0.224 , 0.258	Depositor DCC
R_{free} test set	1917 reflections (5.13%)	DCC
Wilson B-factor (Å ²)	30.5	Xtriage
Anisotropy	0.534	Xtriage
Bulk solvent k_{sol} (e/Å ³), B_{sol} (Å ²)	0.31 , 43.6	EDS
Estimated twinning fraction	0.027 for -h,l,k	Xtriage
L-test for twinning ²	$\langle L \rangle = 0.46$, $\langle L^2 \rangle = 0.29$	Xtriage
Outliers	0 of 74790 reflections	Xtriage
F_o, F_c correlation	0.93	EDS
Total number of atoms	5676	wwPDB-VP
Average B, all atoms (Å ²)	38.0	wwPDB-VP

Xtriage's analysis on translational NCS is as follows: *The largest off-origin peak in the Patterson function is 4.31% of the height of the origin peak. No significant pseudotranslation is detected.*

¹Intensities estimated from amplitudes.

²Theoretical values of $\langle |L| \rangle$, $\langle L^2 \rangle$ for acentric reflections are 0.5, 0.375 respectively for untwinned datasets, and 0.333, 0.2 for perfectly twinned datasets.

5 Model quality [i](#)

5.1 Standard geometry [i](#)

Bond lengths and bond angles in the following residue types are not validated in this section: CL, SF4, MDE, FMN, NAP, FAD

The Z score for a bond length (or angle) is the number of standard deviations the observed value is removed from the expected value. A bond length (or angle) with $|Z| > 5$ is considered an outlier worth inspection. RMSZ is the root-mean-square of all Z scores of the bond lengths (or angles).

Mol	Chain	Bond lengths		Bond angles	
		RMSZ	$\# Z > 5$	RMSZ	$\# Z > 5$
1	A	0.32	0/5192	0.61	1/7044 (0.0%)

There are no bond length outliers.

All (1) bond angle outliers are listed below:

Mol	Chain	Res	Type	Atoms	Z	Observed($^{\circ}$)	Ideal($^{\circ}$)
1	A	50	GLY	N-CA-C	5.30	126.35	113.10

There are no chirality outliers.

There are no planarity outliers.

5.2 Too-close contacts [i](#)

In the following table, the Non-H and H(model) columns list the number of non-hydrogen atoms and hydrogen atoms in the chain respectively. The H(added) column lists the number of hydrogen atoms added and optimized by MolProbity. The Clashes column lists the number of clashes within the asymmetric unit, whereas Symm-Clashes lists symmetry related clashes.

Mol	Chain	Non-H	H(model)	H(added)	Clashes	Symm-Clashes
1	A	5097	0	5107	177	0
2	A	3	0	0	0	0
3	A	8	0	0	0	0
4	A	53	0	31	1	0
5	A	31	0	19	0	0
6	A	48	0	25	6	0
7	A	63	0	49	2	0
8	A	373	0	0	10	0
All	All	5676	0	5231	179	0

The all-atom clashscore is defined as the number of clashes found per 1000 atoms (including hydrogen atoms). The all-atom clashscore for this structure is 17.

All (179) close contacts within the same asymmetric unit are listed below, sorted by their clash magnitude.

Atom-1	Atom-2	Interatomic distance (Å)	Clash overlap (Å)
1:A:659:ARG:HB2	1:A:659:ARG:HH11	1.15	1.09
1:A:646:ILE:HA	1:A:663:GLN:HE21	1.19	1.07
1:A:646:ILE:HA	1:A:663:GLN:NE2	1.91	0.85
1:A:107:TYR:OH	1:A:253:GLU:HG3	1.76	0.85
1:A:102:LEU:HD13	1:A:161:MET:HG2	1.59	0.82
1:A:465:ILE:HD11	1:A:652:ALA:HB2	1.62	0.80
1:A:656:ASP:HB3	6:A:703:NAP:H1D	1.65	0.79
1:A:658:ARG:HH11	1:A:658:ARG:HB3	1.50	0.76
1:A:659:ARG:CB	1:A:659:ARG:HH11	1.99	0.74
1:A:572:GLY:HA2	1:A:573:LYS:HZ2	1.51	0.73
1:A:513:LEU:HD22	1:A:555:ARG:NH1	2.03	0.72
1:A:654:GLU:CD	1:A:654:GLU:H	1.92	0.72
1:A:263:VAL:O	1:A:288:ARG:HD3	1.89	0.72
1:A:505:ILE:HG13	6:A:703:NAP:H52N	1.70	0.72
1:A:104:THR:OG1	1:A:108:SER:HB3	1.90	0.71
1:A:636:LEU:HB3	1:A:643:VAL:HG21	1.71	0.71
1:A:461:LEU:HB2	1:A:645:LEU:HD23	1.71	0.70
1:A:30:GLU:HB2	1:A:72:ALA:HB2	1.73	0.69
1:A:371:VAL:O	1:A:372:GLN:HG2	1.91	0.69
1:A:630:ARG:HB3	1:A:633:ALA:HB2	1.74	0.68
1:A:400:THR:HA	1:A:441:THR:HG23	1.75	0.68
1:A:218:LEU:HG	1:A:220:LEU:HD13	1.76	0.67
1:A:573:LYS:HE2	8:A:1009:HOH:O	1.92	0.67
1:A:264:PRO:HG2	1:A:267:ALA:HB2	1.75	0.67
1:A:494:GLY:H	1:A:619:ASN:HD22	1.44	0.65
1:A:422:GLU:CD	1:A:422:GLU:H	2.00	0.65
1:A:286:THR:O	1:A:287:ASN:HB2	1.97	0.65
1:A:646:ILE:CA	1:A:663:GLN:HE21	2.04	0.63
1:A:658:ARG:HH11	1:A:658:ARG:CB	2.12	0.63
1:A:466:VAL:HG23	1:A:629:ASN:HB2	1.82	0.62
1:A:659:ARG:HB2	1:A:659:ARG:NH1	2.00	0.62
1:A:102:LEU:HD13	1:A:161:MET:CG	2.27	0.62
1:A:238:GLU:HG3	1:A:281:LEU:HD13	1.82	0.62
1:A:562:ARG:HD3	6:A:703:NAP:O3X	1.99	0.61
1:A:498:ALA:HB2	1:A:617:VAL:HG11	1.83	0.61
1:A:226:THR:OG1	1:A:229:GLU:HG3	2.01	0.60
1:A:345:ILE:HB	1:A:351:THR:HG22	1.83	0.59

Continued on next page...

Continued from previous page...

Atom-1	Atom-2	Interatomic distance (Å)	Clash overlap (Å)
1:A:298:ILE:HG23	1:A:303:ASP:HB2	1.83	0.59
1:A:399:VAL:O	1:A:441:THR:HG22	2.02	0.59
1:A:166:TYR:O	1:A:170:GLU:HG3	2.04	0.57
1:A:465:ILE:HD11	1:A:652:ALA:CB	2.34	0.57
1:A:32:TYR:CG	1:A:33:PRO:HD2	2.39	0.57
1:A:319:LEU:HD12	1:A:331:ILE:HD13	1.86	0.57
1:A:513:LEU:HD22	1:A:555:ARG:HH12	1.70	0.56
1:A:548:MET:HB3	1:A:550:ILE:CD1	2.34	0.56
1:A:458:GLU:OE2	1:A:671:ILE:HD11	2.05	0.56
1:A:238:GLU:HG3	1:A:281:LEU:CD1	2.35	0.56
1:A:36:ALA:HB2	1:A:82:HIS:ND1	2.20	0.56
1:A:494:GLY:H	1:A:619:ASN:ND2	2.02	0.55
1:A:468:ARG:O	1:A:470:PRO:HD3	2.06	0.55
1:A:460:ILE:HD12	1:A:460:ILE:N	2.21	0.55
1:A:13:PHE:HB2	1:A:208:ASP:OD1	2.06	0.55
1:A:125:ARG:H	1:A:125:ARG:HD2	1.71	0.55
1:A:493:VAL:HB	1:A:555:ARG:HH12	1.72	0.55
1:A:600:ASP:CG	1:A:605:HIS:HE2	2.09	0.55
1:A:371:VAL:O	1:A:372:GLN:CG	2.54	0.55
1:A:651:VAL:HA	8:A:1027:HOH:O	2.07	0.54
1:A:647:GLY:H	1:A:663:GLN:NE2	2.06	0.54
1:A:654:GLU:CD	1:A:654:GLU:N	2.62	0.53
1:A:573:LYS:NZ	1:A:573:LYS:H	2.07	0.53
1:A:214:ARG:HH21	1:A:286:THR:HG21	1.73	0.53
1:A:572:GLY:HA2	1:A:573:LYS:NZ	2.24	0.53
1:A:451:ASP:O	1:A:454:GLN:HG3	2.09	0.53
1:A:187:TYR:CZ	1:A:229:GLU:HB3	2.44	0.52
1:A:377:ALA:HB2	1:A:456:PHE:CG	2.44	0.52
1:A:583:LEU:HB3	1:A:588:VAL:HG21	1.92	0.52
1:A:573:LYS:HZ3	1:A:573:LYS:H	1.56	0.52
1:A:636:LEU:CB	1:A:643:VAL:HG21	2.39	0.52
1:A:357:PRO:HG3	8:A:960:HOH:O	2.09	0.52
1:A:63:LEU:HG	8:A:754:HOH:O	2.09	0.51
1:A:1:SER:C	1:A:3:PRO:HD3	2.29	0.51
1:A:61:PRO:HG3	1:A:101:ILE:CG2	2.40	0.51
1:A:410:GLY:HA2	4:A:701:FAD:O3B	2.10	0.51
1:A:192:ARG:HD3	8:A:915:HOH:O	2.10	0.51
1:A:192:ARG:HH11	1:A:192:ARG:HG3	1.75	0.51
1:A:441:THR:HA	8:A:1012:HOH:O	2.10	0.51
1:A:192:ARG:O	1:A:196:GLU:HB2	2.11	0.51
1:A:172:LEU:O	1:A:190:ARG:HD2	2.10	0.50

Continued on next page...

Continued from previous page...

Atom-1	Atom-2	Interatomic distance (Å)	Clash overlap (Å)
1:A:222:GLU:O	1:A:223:ASP:HB2	2.10	0.50
1:A:181:ASP:OD2	1:A:183:TRP:HD1	1.94	0.50
1:A:488:ARG:HD3	8:A:1021:HOH:O	2.11	0.50
1:A:550:ILE:HD12	1:A:550:ILE:N	2.26	0.50
1:A:61:PRO:HG3	1:A:101:ILE:HG22	1.93	0.50
1:A:630:ARG:HB3	1:A:633:ALA:CB	2.39	0.50
1:A:552:ARG:HD3	8:A:971:HOH:O	2.12	0.49
1:A:362:GLU:CD	1:A:362:GLU:H	2.15	0.49
1:A:36:ALA:HB2	1:A:82:HIS:CE1	2.46	0.49
1:A:164:GLU:HA	1:A:250:GLY:O	2.13	0.49
1:A:562:ARG:HD2	1:A:596:TYR:HE1	1.75	0.49
1:A:573:LYS:CD	1:A:573:LYS:H	2.26	0.49
1:A:495:ASN:O	1:A:555:ARG:HB3	2.13	0.48
1:A:197:VAL:O	1:A:201:VAL:HG23	2.13	0.48
1:A:598:LYS:HE3	1:A:605:HIS:CG	2.48	0.48
1:A:421:LYS:HD3	1:A:424:PHE:HE2	1.78	0.48
1:A:106:ARG:HA	1:A:113:LEU:HD12	1.95	0.48
1:A:55:VAL:HG11	1:A:159:GLU:OE1	2.14	0.48
1:A:370:ALA:O	1:A:371:VAL:C	2.51	0.47
1:A:608:ILE:HG22	1:A:609:ASN:ND2	2.29	0.47
1:A:493:VAL:HB	1:A:555:ARG:NH1	2.29	0.47
1:A:550:ILE:HD12	1:A:550:ILE:H	1.78	0.47
1:A:199:ARG:HG3	8:A:869:HOH:O	2.13	0.47
1:A:32:TYR:CD2	1:A:33:PRO:HD2	2.50	0.47
1:A:49:HIS:CE1	1:A:318:GLU:HG2	2.49	0.47
1:A:605:HIS:ND1	1:A:614:VAL:HG22	2.28	0.47
1:A:583:LEU:HB3	1:A:588:VAL:CG2	2.45	0.47
1:A:372:GLN:O	1:A:374:LYS:HD3	2.14	0.47
1:A:639:SER:HB3	1:A:641:LYS:HE3	1.95	0.47
1:A:257:PRO:HG3	1:A:578:ILE:HG23	1.96	0.47
1:A:286:THR:HB	1:A:308:SER:HB3	1.97	0.47
1:A:238:GLU:OE1	1:A:281:LEU:HD13	2.15	0.46
1:A:454:GLN:HG2	1:A:641:LYS:HZ1	1.79	0.46
1:A:339:GLN:O	1:A:658:ARG:NH2	2.49	0.46
1:A:604:LEU:HG	1:A:606:VAL:HG13	1.97	0.46
1:A:99:LEU:C	1:A:99:LEU:HD23	2.36	0.46
1:A:368:LEU:O	1:A:395:ARG:NH1	2.48	0.46
1:A:595:SER:HB2	1:A:607:VAL:HB	1.98	0.46
1:A:5:LEU:HA	1:A:299:LEU:CD1	2.44	0.46
1:A:319:LEU:CD1	1:A:331:ILE:HD13	2.45	0.45
1:A:600:ASP:OD2	1:A:605:HIS:NE2	2.49	0.45

Continued on next page...

Continued from previous page...

Atom-1	Atom-2	Interatomic distance (Å)	Clash overlap (Å)
1:A:329:ASP:OD2	1:A:433:ARG:HD3	2.16	0.45
1:A:477:HIS:ND1	1:A:478:PRO:HD2	2.32	0.45
1:A:375:ASN:ND2	1:A:398:GLN:OE1	2.48	0.45
1:A:371:VAL:O	1:A:372:GLN:NE2	2.49	0.45
1:A:79:GLN:O	1:A:82:HIS:HB3	2.17	0.45
1:A:435:ILE:HG23	1:A:440:VAL:HB	1.97	0.45
1:A:632:LEU:HD12	1:A:632:LEU:N	2.31	0.45
1:A:346:PHE:CD1	7:A:704:MDE:H9'1	2.52	0.45
1:A:286:THR:OG1	1:A:287:ASN:N	2.49	0.45
1:A:27:THR:O	1:A:351:THR:HG23	2.17	0.45
1:A:365:MET:N	1:A:366:PRO:HD3	2.32	0.44
1:A:217:MET:HE3	1:A:247:THR:HA	2.00	0.44
1:A:548:MET:HB3	1:A:550:ILE:HD12	1.99	0.44
1:A:481:LEU:O	1:A:621:VAL:HA	2.17	0.44
1:A:27:THR:N	1:A:30:GLU:OE1	2.47	0.44
1:A:625:GLY:CA	6:A:703:NAP:H52A	2.47	0.44
1:A:639:SER:O	1:A:641:LYS:HG3	2.18	0.44
1:A:60:ALA:HA	1:A:61:PRO:HD3	1.75	0.43
1:A:604:LEU:HD23	1:A:615:LEU:HD12	1.99	0.43
1:A:219:ASP:O	1:A:220:LEU:HB2	2.18	0.43
1:A:157:GLY:HA2	1:A:209:PHE:CZ	2.52	0.43
1:A:566:LYS:HE2	1:A:580:ARG:HD2	2.00	0.43
1:A:454:GLN:HG2	1:A:641:LYS:NZ	2.33	0.43
1:A:655:LEU:HD22	1:A:659:ARG:HB3	1.99	0.43
1:A:174:LEU:HG	1:A:190:ARG:NH1	2.33	0.43
1:A:255:ARG:HA	1:A:255:ARG:NE	2.33	0.43
1:A:450:ALA:HB2	1:A:635:PRO:HB2	2.00	0.43
1:A:573:LYS:HD3	1:A:573:LYS:N	2.34	0.43
1:A:110:GLN:HA	1:A:111:PRO:HD3	1.87	0.43
1:A:505:ILE:HD12	6:A:703:NAP:O2N	2.19	0.43
1:A:46:ARG:CZ	1:A:317:ALA:HB2	2.49	0.43
1:A:647:GLY:N	1:A:663:GLN:NE2	2.66	0.42
1:A:492:PRO:HD2	8:A:1079:HOH:O	2.19	0.42
1:A:598:LYS:HE3	1:A:605:HIS:CD2	2.54	0.42
1:A:353:CYS:SG	1:A:355:VAL:HG22	2.59	0.42
1:A:84:ARG:HG2	1:A:88:GLU:OE2	2.19	0.42
1:A:354:LEU:C	1:A:354:LEU:HD23	2.39	0.42
1:A:651:VAL:O	1:A:655:LEU:HG	2.19	0.42
1:A:359:ALA:O	1:A:360:CYS:HB2	2.19	0.42
1:A:655:LEU:HD22	1:A:659:ARG:HG2	2.01	0.42
1:A:368:LEU:O	1:A:369:PRO:C	2.57	0.42

Continued on next page...

Continued from previous page...

Atom-1	Atom-2	Interatomic distance (Å)	Clash overlap (Å)
1:A:377:ALA:HB2	1:A:456:PHE:CD2	2.55	0.42
1:A:369:PRO:O	1:A:395:ARG:O	2.38	0.42
1:A:449:THR:HG22	1:A:450:ALA:N	2.34	0.42
1:A:247:THR:HB	1:A:286:THR:HG22	2.02	0.42
1:A:297:ASP:O	1:A:301:ARG:HG3	2.19	0.42
1:A:573:LYS:CD	1:A:573:LYS:N	2.82	0.41
6:A:703:NAP:H6N	6:A:703:NAP:H2D	1.89	0.41
1:A:7:ALA:HA	1:A:8:PRO:HD3	1.96	0.41
1:A:341:CYS:SG	1:A:342:LEU:N	2.91	0.41
1:A:175:ARG:HB2	1:A:223:ASP:HB2	2.03	0.41
1:A:196:GLU:OE1	1:A:196:GLU:HA	2.21	0.41
1:A:452:GLN:OE1	1:A:452:GLN:HA	2.20	0.41
7:A:704:MDE:H5'1	7:A:704:MDE:H8	2.03	0.41
1:A:367:ILE:HG12	1:A:669:LEU:HD22	2.03	0.41
1:A:25:MET:HE1	1:A:314:LEU:HD13	2.03	0.41
1:A:658:ARG:NH1	1:A:658:ARG:CB	2.82	0.41
1:A:515:GLN:HG3	1:A:517:GLY:O	2.21	0.40
1:A:342:LEU:HG	1:A:574:THR:HG21	2.03	0.40
1:A:110:GLN:HG2	1:A:112:HIS:H	1.86	0.40

There are no symmetry-related clashes.

5.3 Torsion angles [i](#)

5.3.1 Protein backbone [i](#)

In the following table, the Percentiles column shows the percent Ramachandran outliers of the chain as a percentile score with respect to all X-ray entries followed by that with respect to entries of similar resolution.

The Analysed column shows the number of residues for which the backbone conformation was analysed, and the total number of residues.

Mol	Chain	Analysed	Favoured	Allowed	Outliers	Percentiles
1	A	669/671 (100%)	620 (93%)	38 (6%)	11 (2%)	12 8

All (11) Ramachandran outliers are listed below:

Mol	Chain	Res	Type
1	A	453	LEU
1	A	504	GLY

Continued on next page...

Continued from previous page...

Mol	Chain	Res	Type
1	A	653	MET
1	A	287	ASN
1	A	369	PRO
1	A	373	LYS
1	A	454	GLN
1	A	33	PRO
1	A	372	GLN
1	A	181	ASP
1	A	370	ALA

5.3.2 Protein sidechains ⓘ

In the following table, the Percentiles column shows the percent sidechain outliers of the chain as a percentile score with respect to all X-ray entries followed by that with respect to entries of similar resolution.

The Analysed column shows the number of residues for which the sidechain conformation was analysed, and the total number of residues.

Mol	Chain	Analysed	Rotameric	Outliers	Percentiles
1	A	537/537 (100%)	514 (96%)	23 (4%)	35 43

All (23) residues with a non-rotameric sidechain are listed below:

Mol	Chain	Res	Type
1	A	30	GLU
1	A	31	GLU
1	A	33	PRO
1	A	125	ARG
1	A	161	MET
1	A	169	ASN
1	A	196	GLU
1	A	204	ARG
1	A	208	ASP
1	A	220	LEU
1	A	314	LEU
1	A	374	LYS
1	A	454	GLN
1	A	476	ASP
1	A	539	GLN
1	A	560	LEU
1	A	573	LYS

Continued on next page...

Continued from previous page...

Mol	Chain	Res	Type
1	A	583	LEU
1	A	598	LYS
1	A	654	GLU
1	A	658	ARG
1	A	659	ARG
1	A	667	LEU

Some sidechains can be flipped to improve hydrogen bonding and reduce clashes. All (11) such sidechains are listed below:

Mol	Chain	Res	Type
1	A	129	HIS
1	A	207	ASN
1	A	405	HIS
1	A	538	GLN
1	A	549	GLN
1	A	597	GLN
1	A	609	ASN
1	A	613	GLN
1	A	619	ASN
1	A	634	GLN
1	A	663	GLN

5.3.3 RNA ⓘ

There are no RNA molecules in this entry.

5.4 Non-standard residues in protein, DNA, RNA chains ⓘ

There are no non-standard protein/DNA/RNA residues in this entry.

5.5 Carbohydrates ⓘ

There are no carbohydrates in this entry.

5.6 Ligand geometry ⓘ

Of 8 ligands modelled in this entry, 3 are monoatomic - leaving 5 for Mogul analysis.

In the following table, the Counts columns list the number of bonds (or angles) for which Mogul statistics could be retrieved, the number of bonds (or angles) that are observed in the model and the number of bonds (or angles) that are defined in the chemical component dictionary. The Link column lists molecule types, if any, to which the group is linked. The Z score for a bond length (or angle) is the number of standard deviations the observed value is removed from the expected value. A bond length (or angle) with $|Z| > 2$ is considered an outlier worth inspection. RMSZ is the root-mean-square of all Z scores of the bond lengths (or angles).

Mol	Type	Chain	Res	Link	Bond lengths			Bond angles		
					Counts	RMSZ	# Z > 2	Counts	RMSZ	# Z > 2
3	SF4	A	700	1	0,12,12	0.00	-	0,24,24	0.00	-
4	FAD	A	701	-	52,58,58	4.35	24 (46%)	52,89,89	3.50	16 (30%)
5	FMN	A	702	-	32,33,33	2.85	11 (34%)	34,50,50	3.46	11 (32%)
6	NAP	A	703	-	45,52,52	2.01	9 (20%)	55,80,80	1.43	6 (10%)
7	MDE	A	704	-	54,65,65	2.55	15 (27%)	59,92,92	2.40	13 (22%)

In the following table, the Chirals column lists the number of chiral outliers, the number of chiral centers analysed, the number of these observed in the model and the number defined in the chemical component dictionary. Similar counts are reported in the Torsion and Rings columns. '-' means no outliers of that kind were identified.

Mol	Type	Chain	Res	Link	Chirals	Torsions	Rings
3	SF4	A	700	1	-	0/0/48/48	0/6/5/5
4	FAD	A	701	-	-	0/30/50/50	0/6/6/6
5	FMN	A	702	-	-	0/18/18/18	0/3/3/3
6	NAP	A	703	-	-	0/27/67/67	0/5/5/5
7	MDE	A	704	-	1/1/13/18	1/57/82/82	0/3/3/3

All (59) bond length outliers are listed below:

Mol	Chain	Res	Type	Atoms	Z	Observed(Å)	Ideal(Å)
5	A	702	FMN	C1'-N10	-10.51	1.37	1.48
7	A	704	MDE	O9P-C9P	-6.16	1.23	1.40
5	A	702	FMN	C5'-C4'	-2.44	1.48	1.51
5	A	702	FMN	P-O3P	-2.23	1.47	1.54
7	A	704	MDE	C4A-N3A	-2.12	1.32	1.35
4	A	701	FAD	C1'-C2'	2.05	1.64	1.51
7	A	704	MDE	C8A-N7A	2.09	1.38	1.34
7	A	704	MDE	C2B-C1B	2.09	1.57	1.53
7	A	704	MDE	C5P-N4P	2.21	1.38	1.33
5	A	702	FMN	C8M-C8	2.21	1.55	1.51
6	A	703	NAP	C3N-C7N	2.31	1.54	1.50
4	A	701	FAD	C8A-N7A	2.41	1.39	1.34
6	A	703	NAP	O4B-C1B	2.42	1.44	1.41

Continued on next page...

Continued from previous page...

Mol	Chain	Res	Type	Atoms	Z	Observed(Å)	Ideal(Å)
6	A	703	NAP	C6N-N1N	2.51	1.42	1.35
5	A	702	FMN	C10-N1	2.54	1.39	1.35
7	A	704	MDE	O4B-C1B	2.58	1.44	1.41
7	A	704	MDE	CBP-CAP	2.59	1.59	1.52
6	A	703	NAP	O4D-C1D	2.66	1.45	1.41
5	A	702	FMN	C7M-C7	2.73	1.56	1.51
4	A	701	FAD	C9-C8	2.75	1.45	1.37
4	A	701	FAD	C5A-C4A	2.76	1.46	1.40
6	A	703	NAP	P2B-O1X	3.00	1.60	1.50
6	A	703	NAP	C4N-C3N	3.01	1.44	1.39
7	A	704	MDE	C5A-C4A	3.03	1.47	1.40
4	A	701	FAD	C6-C7	3.11	1.46	1.37
6	A	703	NAP	C5A-C4A	3.11	1.47	1.40
4	A	701	FAD	C4-C4X	3.28	1.47	1.41
5	A	702	FMN	C4-N3	3.43	1.39	1.33
4	A	701	FAD	C2-N3	3.56	1.45	1.38
7	A	704	MDE	OB1-CB1	3.68	1.42	1.19
4	A	701	FAD	O2B-C2B	3.70	1.51	1.43
7	A	704	MDE	O2B-C2B	3.95	1.52	1.43
4	A	701	FAD	C10-N1	4.04	1.42	1.35
4	A	701	FAD	C5X-N5	4.04	1.41	1.35
5	A	702	FMN	C4A-N5	4.08	1.39	1.33
5	A	702	FMN	C10-N10	4.14	1.44	1.39
7	A	704	MDE	CEP-CBP	4.16	1.62	1.53
4	A	701	FAD	C1'-N10	4.17	1.52	1.48
5	A	702	FMN	C4-C4A	4.30	1.50	1.41
6	A	703	NAP	C2N-C3N	4.39	1.45	1.39
7	A	704	MDE	C2'-C3'	4.66	1.44	1.31
4	A	701	FAD	C9-C9A	4.74	1.51	1.40
4	A	701	FAD	C5'-C4'	4.81	1.59	1.51
4	A	701	FAD	C2A-N1A	4.86	1.43	1.33
7	A	704	MDE	C2A-N1A	4.91	1.43	1.33
4	A	701	FAD	C6-C5X	5.50	1.50	1.41
4	A	701	FAD	C2A-N3A	5.65	1.42	1.32
7	A	704	MDE	C2A-N3A	5.78	1.42	1.32
4	A	701	FAD	C4X-N5	5.82	1.42	1.33
5	A	702	FMN	C9A-N10	5.87	1.47	1.38
4	A	701	FAD	C8-C7	6.35	1.58	1.41
4	A	701	FAD	C9A-C5X	6.73	1.56	1.42
4	A	701	FAD	C4X-C10	7.20	1.54	1.40
4	A	701	FAD	C2'-C3'	8.47	1.70	1.53
4	A	701	FAD	C4-N3	9.02	1.49	1.33

Continued on next page...

Continued from previous page...

Mol	Chain	Res	Type	Atoms	Z	Observed(Å)	Ideal(Å)
6	A	703	NAP	C4A-N3A	9.20	1.49	1.35
4	A	701	FAD	C9A-N10	10.54	1.53	1.38
7	A	704	MDE	OAP-CAP	10.77	1.44	1.21
4	A	701	FAD	C10-N10	16.06	1.57	1.39

All (46) bond angle outliers are listed below:

Mol	Chain	Res	Type	Atoms	Z	Observed(°)	Ideal(°)
7	A	704	MDE	OAP-CAP-C9P	-9.26	111.21	118.99
4	A	701	FAD	C1B-N9A-C4A	-7.96	117.92	126.81
4	A	701	FAD	C4X-C4-N3	-7.79	113.34	123.52
4	A	701	FAD	N3-C2-N1	-7.44	115.16	127.69
5	A	702	FMN	C4A-C4-N3	-7.00	114.37	123.52
7	A	704	MDE	C1B-N9A-C4A	-6.72	119.30	126.81
5	A	702	FMN	N3-C2-N1	-6.35	116.99	127.69
4	A	701	FAD	C4X-C10-N10	-6.27	115.96	120.52
4	A	701	FAD	N3A-C2A-N1A	-5.97	124.18	128.87
6	A	703	NAP	O7N-C7N-N7N	-5.81	114.30	122.58
7	A	704	MDE	N3A-C2A-N1A	-5.75	124.35	128.87
5	A	702	FMN	O5'-P-O1P	-4.33	96.19	107.08
7	A	704	MDE	CEP-CBP-CCP	-4.23	101.62	109.11
4	A	701	FAD	C5X-C9A-N10	-3.44	115.00	117.58
4	A	701	FAD	C4-C4X-C10	-3.42	117.75	119.94
7	A	704	MDE	O8B-P3B-O3B	-2.78	98.32	106.62
4	A	701	FAD	C6-C5X-N5	-2.70	115.55	118.92
7	A	704	MDE	C4'-C3'-C2'	-2.22	120.53	125.70
4	A	701	FAD	C8M-C8-C9	-2.11	114.36	120.33
7	A	704	MDE	C4B-O4B-C1B	-2.08	107.44	109.64
4	A	701	FAD	C4X-N5-C5X	2.02	119.10	116.72
4	A	701	FAD	C8M-C8-C7	2.03	125.09	120.73
4	A	701	FAD	C9A-C5X-N5	2.04	125.50	122.18
6	A	703	NAP	C3N-C2N-N1N	2.07	122.70	120.34
4	A	701	FAD	O4B-C4B-C3B	2.12	109.47	105.16
6	A	703	NAP	C2N-C3N-C7N	2.17	125.48	119.24
6	A	703	NAP	C4D-O4D-C1D	2.32	112.11	109.64
4	A	701	FAD	O4B-C4B-C5B	2.40	117.89	109.29
5	A	702	FMN	C6-C5A-C9A	2.45	121.81	119.11
7	A	704	MDE	O7B-P3B-O3B	2.53	114.19	106.62
7	A	704	MDE	O4B-C4B-C5B	2.72	119.03	109.29
7	A	704	MDE	O2A-P1A-O3A	2.87	117.55	105.27
6	A	703	NAP	C3N-C7N-N7N	3.05	121.27	117.82
7	A	704	MDE	CB-SG-C5'	3.12	107.20	101.35

Continued on next page...

Continued from previous page...

Mol	Chain	Res	Type	Atoms	Z	Observed(°)	Ideal(°)
5	A	702	FMN	C4A-N5-C5A	3.28	120.58	116.72
5	A	702	FMN	C4A-C10-N10	3.31	122.92	120.52
5	A	702	FMN	O4'-C4'-C3'	3.41	117.73	108.96
4	A	701	FAD	C1'-N10-C9A	4.36	123.88	118.83
6	A	703	NAP	O7N-C7N-C3N	4.37	124.44	119.60
7	A	704	MDE	C2P-S1P-C1'	4.47	105.36	99.61
5	A	702	FMN	C5A-C9A-N10	5.20	121.48	117.58
5	A	702	FMN	C4-C4A-C10	5.22	123.28	119.94
5	A	702	FMN	C1'-N10-C9A	6.33	126.17	118.83
7	A	704	MDE	O9P-C9P-CAP	7.10	120.53	109.62
5	A	702	FMN	C4-N3-C2	11.86	125.06	115.16
4	A	701	FAD	C4-N3-C2	16.29	128.75	115.16

All (1) chirality outliers are listed below:

Mol	Chain	Res	Type	Atom
7	A	704	MDE	C9P

All (1) torsion outliers are listed below:

Mol	Chain	Res	Type	Atoms
7	A	704	MDE	CAP-C9P-N8P-C7P

There are no ring outliers.

3 monomers are involved in 9 short contacts:

Mol	Chain	Res	Type	Clashes	Symm-Clashes
4	A	701	FAD	1	0
6	A	703	NAP	6	0
7	A	704	MDE	2	0

5.7 Other polymers [i](#)

There are no such residues in this entry.

5.8 Polymer linkage issues [i](#)

There are no chain breaks in this entry.

6 Fit of model and data ⓘ

6.1 Protein, DNA and RNA chains ⓘ

In the following table, the column labelled ‘#RSRZ> 2’ contains the number (and percentage) of RSRZ outliers, followed by percent RSRZ outliers for the chain as percentile scores relative to all X-ray entries and entries of similar resolution. The OWAB column contains the minimum, median, 95th percentile and maximum values of the occupancy-weighted average B-factor per residue. The column labelled ‘Q< 0.9’ lists the number of (and percentage) of residues with an average occupancy less than 0.9.

Mol	Chain	Analysed	<RSRZ>	#RSRZ>2	OWAB(Å ²)	Q<0.9
1	A	671/671 (100%)	0.15	20 (2%) 54 53	16, 35, 64, 87	0

All (20) RSRZ outliers are listed below:

Mol	Chain	Res	Type	RSRZ
1	A	637	ILE	6.5
1	A	371	VAL	6.4
1	A	638	ASP	4.5
1	A	640	GLY	3.9
1	A	453	LEU	3.9
1	A	639	SER	3.4
1	A	452	GLN	3.4
1	A	653	MET	3.1
1	A	368	LEU	3.0
1	A	125	ARG	2.8
1	A	655	LEU	2.6
1	A	450	ALA	2.4
1	A	633	ALA	2.4
1	A	457	ASP	2.3
1	A	451	ASP	2.3
1	A	372	GLN	2.3
1	A	475	ILE	2.3
1	A	641	LYS	2.1
1	A	188	ARG	2.1
1	A	491	ALA	2.1

6.2 Non-standard residues in protein, DNA, RNA chains ⓘ

There are no non-standard protein/DNA/RNA residues in this entry.

6.3 Carbohydrates [i](#)

There are no carbohydrates in this entry.

6.4 Ligands [i](#)

In the following table, the Atoms column lists the number of modelled atoms in the group and the number defined in the chemical component dictionary. LLDF column lists the quality of electron density of the group with respect to its neighbouring residues in protein, DNA or RNA chains. The B-factors column lists the minimum, median, 95th percentile and maximum values of B factors of atoms in the group. The column labelled 'Q< 0.9' lists the number of atoms with occupancy less than 0.9.

Mol	Type	Chain	Res	Atoms	RSCC	RSR	LLDF	B-factors(\AA^2)	Q<0.9
7	MDE	A	704	63/63	0.81	0.22	1.66	25,51,94,97	0
6	NAP	A	703	48/48	0.88	0.21	0.86	34,67,94,95	0
4	FAD	A	701	53/53	0.89	0.18	0.60	24,35,55,56	0
5	FMN	A	702	31/31	0.95	0.17	0.42	17,20,23,23	0
3	SF4	A	700	8/8	0.96	0.09	-1.65	19,20,22,24	0
2	CL	A	706	1/1	0.84	0.19	-	55,55,55,55	0
2	CL	A	705	1/1	0.80	0.06	-	69,69,69,69	0
2	CL	A	707	1/1	0.86	0.10	-	70,70,70,70	0

6.5 Other polymers [i](#)

There are no such residues in this entry.