



Full wwPDB X-ray Structure Validation Report ⓘ

Feb 1, 2016 – 05:14 AM GMT

PDB ID : 2PZE
Title : Minimal human CFTR first nucleotide binding domain as a head-to-tail dimer
Authors : Atwell, S.; Conners, K.; Emtage, S.; Gheyi, T.; Glenn, N.R.; Hendle, J.; Lewis, H.A.; Lu, F.; Rodgers, L.A.; Romero, R.; Sauder, J.M.; Smith, D.; Tien, H.; Wasserman, S.R.; Zhao, X.
Deposited on : 2007-05-17
Resolution : 1.70 Å(reported)

This is a Full wwPDB X-ray Structure Validation Report for a publicly released PDB entry.
We welcome your comments at validation@mail.wwpdb.org
A user guide is available at
<http://wwpdb.org/validation/2016/XrayValidationReportHelp>
with specific help available everywhere you see the ⓘ symbol.

The following versions of software and data (see [references ⓘ](#)) were used in the production of this report:

MolProbity : 4.02b-467
Mogul : 1.7 (RC4), CSD as536be (2015)
Xtriage (Phenix) : 1.9-1692
EDS : rb-20026688
Percentile statistics : 20151230.v01 (using entries in the PDB archive December 30th 2015)
Refmac : 5.8.0135
CCP4 : 6.5.0
Ideal geometry (proteins) : Engh & Huber (2001)
Ideal geometry (DNA, RNA) : Parkinson et al. (1996)
Validation Pipeline (wwPDB-VP) : trunk26865

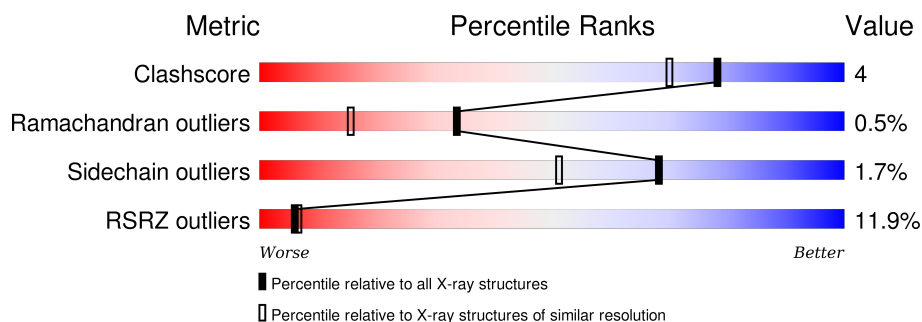
1 Overall quality at a glance

The following experimental techniques were used to determine the structure:

X-RAY DIFFRACTION

The reported resolution of this entry is 1.70 Å.

Percentile scores (ranging between 0-100) for global validation metrics of the entry are shown in the following graphic. The table shows the number of entries on which the scores are based.



Metric	Whole archive (#Entries)	Similar resolution (#Entries, resolution range(Å))
Clashscore	102246	3585 (1.70-1.70)
Ramachandran outliers	100387	3527 (1.70-1.70)
Sidechain outliers	100360	3527 (1.70-1.70)
RSRZ outliers	91569	3200 (1.70-1.70)

The table below summarises the geometric issues observed across the polymeric chains and their fit to the electron density. The red, orange, yellow and green segments on the lower bar indicate the fraction of residues that contain outliers for ≥ 3 , 2, 1 and 0 types of geometric quality criteria. A grey segment represents the fraction of residues that are not modelled. The numeric value for each fraction is indicated below the corresponding segment, with a dot representing fractions $\leq 5\%$. The upper red bar (where present) indicates the fraction of residues that have poor fit to the electron density. The numeric value is given above the bar.

Mol	Chain	Length	Quality of chain
1	A	229	
1	B	229	

2 Entry composition

There are 4 unique types of molecules in this entry. The entry contains 3626 atoms, of which 0 are hydrogens and 0 are deuteriums.

In the tables below, the ZeroOcc column contains the number of atoms modelled with zero occupancy, the AltConf column contains the number of residues with at least one atom in alternate conformation and the Trace column contains the number of residues modelled with at most 2 atoms.

- Molecule 1 is a protein called Cystic fibrosis transmembrane conductance regulator.

Mol	Chain	Residues	Atoms					ZeroOcc	AltConf	Trace
1	A	226	Total	C	N	O	S	0	6	0
			1700	1084	277	327	12			
1	B	219	Total	C	N	O	S	0	4	0
			1668	1069	273	316	10			

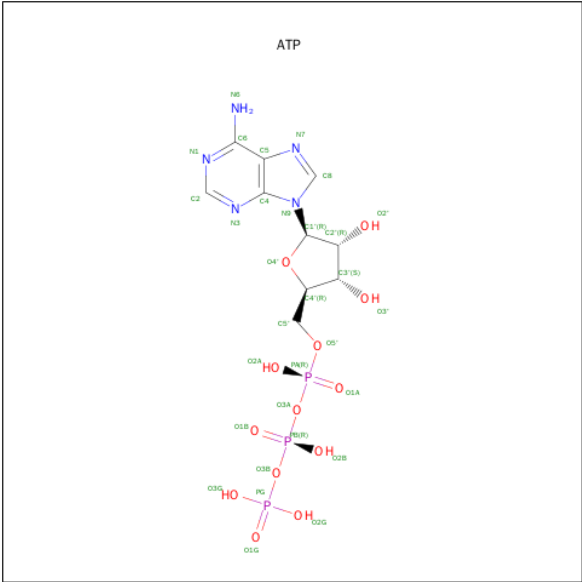
There are 4 discrepancies between the modelled and reference sequences:

Chain	Residue	Modelled	Actual	Comment	Reference
A	386	SER	-	EXPRESSION TAG	UNP P13569
B	386	SER	-	EXPRESSION TAG	UNP P13569
A	470	MET	VAL	VARIANT	UNP P13569
B	470	MET	VAL	VARIANT	UNP P13569

- Molecule 2 is MAGNESIUM ION (three-letter code: MG) (formula: Mg).

Mol	Chain	Residues	Atoms		ZeroOcc	AltConf
2	B	1	Total	Mg	0	0
			1	1		
2	A	1	Total	Mg	0	0
			1	1		

- Molecule 3 is ADENOSINE-5'-TRIPHOSPHATE (three-letter code: ATP) (formula: C₁₀H₁₆N₅O₁₃P₃).



Mol	Chain	Residues	Atoms					ZeroOcc	AltConf
3	A	1	Total	C	N	O	P	0	0
			31	10	5	13	3		
3	B	1	Total	C	N	O	P	0	0
			31	10	5	13	3		

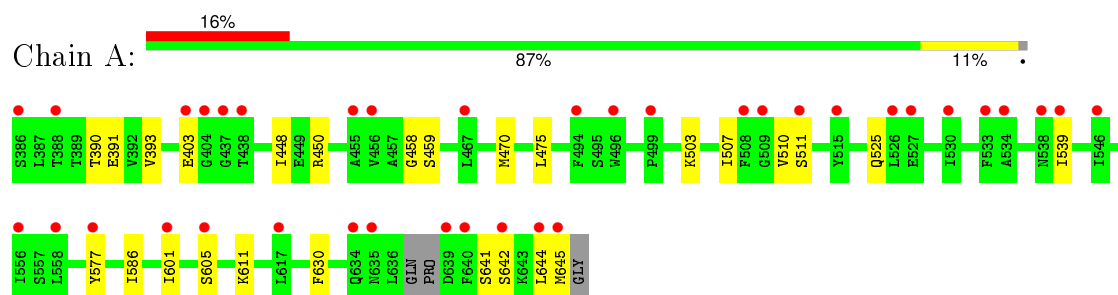
- Molecule 4 is water.

Mol	Chain	Residues	Atoms		ZeroOcc	AltConf
4	A	86	Total	O	0	0
			86	86		
4	B	108	Total	O	0	0
			108	108		

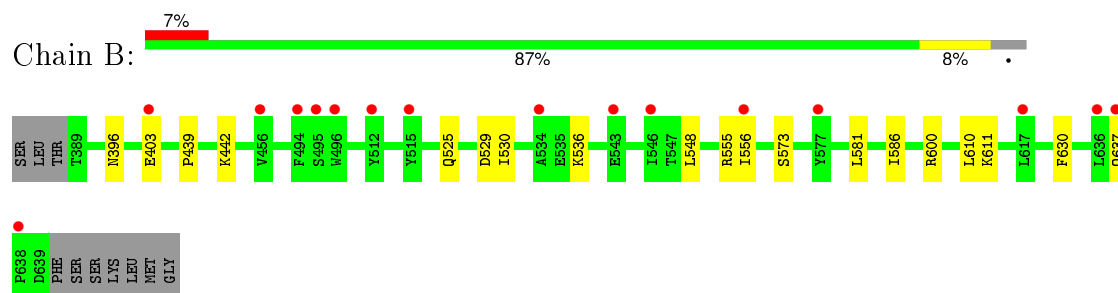
3 Residue-property plots [i](#)

These plots are drawn for all protein, RNA and DNA chains in the entry. The first graphic for a chain summarises the proportions of errors displayed in the second graphic. The second graphic shows the sequence view annotated by issues in geometry and electron density. Residues are color-coded according to the number of geometric quality criteria for which they contain at least one outlier: green = 0, yellow = 1, orange = 2 and red = 3 or more. A red dot above a residue indicates a poor fit to the electron density ($\text{RSRZ} > 2$). Stretches of 2 or more consecutive residues without any outlier are shown as a green connector. Residues present in the sample, but not in the model, are shown in grey.

- Molecule 1: Cystic fibrosis transmembrane conductance regulator



- Molecule 1: Cystic fibrosis transmembrane conductance regulator



4 Data and refinement statistics

Property	Value	Source
Space group	P 21 21 21	Depositor
Cell constants a, b, c, α , β , γ	42.80 Å 92.78 Å 107.42 Å 90.00° 90.00° 90.00°	Depositor
Resolution (Å)	21.30 – 1.70 22.09 – 1.70	Depositor EDS
% Data completeness (in resolution range)	98.0 (21.30-1.70) 98.1 (22.09-1.70)	Depositor EDS
R_{merge}	0.09	Depositor
R_{sym}	0.09	Depositor
$\langle I/\sigma(I) \rangle$ ¹	2.21 (at 1.70 Å)	Xtriage
Refinement program	REFMAC5	Depositor
R, R_{free}	0.210 , 0.247 0.211 , (Not available)	Depositor DCC
R_{free} test set	No test flags present.	DCC
Wilson B-factor (Å ²)	19.6	Xtriage
Anisotropy	0.328	Xtriage
Bulk solvent k_{sol} (e/Å ³), B_{sol} (Å ²)	0.39 , 58.9	EDS
Estimated twinning fraction	No twinning to report.	Xtriage
L-test for twinning ²	$\langle L \rangle = 0.49$, $\langle L^2 \rangle = 0.32$	Xtriage
Outliers	0 of 47006 reflections	Xtriage
F_o, F_c correlation	0.95	EDS
Total number of atoms	3626	wwPDB-VP
Average B, all atoms (Å ²)	24.0	wwPDB-VP

Xtriage's analysis on translational NCS is as follows: *The largest off-origin peak in the Patterson function is 5.59% of the height of the origin peak. No significant pseudotranslation is detected.*

¹Intensities estimated from amplitudes.

²Theoretical values of $\langle |L| \rangle$, $\langle L^2 \rangle$ for acentric reflections are 0.5, 0.375 respectively for untwinned datasets, and 0.333, 0.2 for perfectly twinned datasets.

5 Model quality

5.1 Standard geometry

Bond lengths and bond angles in the following residue types are not validated in this section: MG, ATP

The Z score for a bond length (or angle) is the number of standard deviations the observed value is removed from the expected value. A bond length (or angle) with $|Z| > 5$ is considered an outlier worth inspection. RMSZ is the root-mean-square of all Z scores of the bond lengths (or angles).

Mol	Chain	Bond lengths		Bond angles	
		RMSZ	$\# Z > 5$	RMSZ	$\# Z > 5$
1	A	0.51	0/1750	0.58	0/2363
1	B	0.53	0/1713	0.62	1/2313 (0.0%)
All	All	0.52	0/3463	0.60	1/4676 (0.0%)

Chiral center outliers are detected by calculating the chiral volume of a chiral center and verifying if the center is modelled as a planar moiety or with the opposite hand. A planarity outlier is detected by checking planarity of atoms in a peptide group, atoms in a mainchain group or atoms of a sidechain that are expected to be planar.

Mol	Chain	#Chirality outliers	#Planarity outliers
1	B	0	1

There are no bond length outliers.

All (1) bond angle outliers are listed below:

Mol	Chain	Res	Type	Atoms	Z	Observed($^{\circ}$)	Ideal($^{\circ}$)
1	B	600	ARG	NE-CZ-NH2	-5.94	117.33	120.30

There are no chirality outliers.

All (1) planarity outliers are listed below:

Mol	Chain	Res	Type	Group
1	B	637	GLN	Peptide

5.2 Too-close contacts

In the following table, the Non-H and H(model) columns list the number of non-hydrogen atoms and hydrogen atoms in the chain respectively. The H(added) column lists the number of hydrogen atoms added and optimized by MolProbity. The Clashes column lists the number of clashes within

the asymmetric unit, whereas Symm-Clashes lists symmetry related clashes.

Mol	Chain	Non-H	H(model)	H(added)	Clashes	Symm-Clashes
1	A	1700	0	1641	13	0
1	B	1668	0	1632	13	0
2	A	1	0	0	0	0
2	B	1	0	0	0	0
3	A	31	0	12	0	0
3	B	31	0	12	0	0
4	A	86	0	0	0	0
4	B	108	0	0	2	0
All	All	3626	0	3297	24	0

The all-atom clashscore is defined as the number of clashes found per 1000 atoms (including hydrogen atoms). The all-atom clashscore for this structure is 4.

All (24) close contacts within the same asymmetric unit are listed below, sorted by their clash magnitude.

Atom-1	Atom-2	Interatomic distance (Å)	Clash overlap (Å)
1:A:644:LEU:HA	1:B:581:LEU:HD21	1.59	0.83
1:A:641:SER:O	1:A:645:MET:HG2	1.80	0.82
1:B:529:ASP:OD2	1:B:555:ARG:NH2	2.27	0.67
1:A:605:SER:O	1:A:645:MET:SD	2.60	0.60
1:B:439:PRO:HG3	1:B:442:LYS:HD2	1.86	0.57
1:A:611:LYS:HG2	1:A:630:PHE:CE2	2.44	0.53
1:A:644:LEU:HA	1:B:581:LEU:CD2	2.35	0.51
1:B:439:PRO:CG	1:B:442:LYS:HD2	2.41	0.51
1:A:510:VAL:HG12	1:A:511:SER:N	2.28	0.48
1:B:611:LYS:HG2	1:B:630:PHE:CE2	2.50	0.45
1:A:470:MET:HG2	1:A:475:LEU:HD23	1.99	0.45
1:B:530:ILE:O	1:B:536:LYS:HA	2.16	0.45
1:B:611:LYS:HG2	1:B:630:PHE:CZ	2.52	0.44
1:A:390:THR:HG21	1:A:393:VAL:CG2	2.46	0.44
1:B:581:LEU:HD22	1:B:581:LEU:H	1.83	0.44
1:B:396:ASN:ND2	4:B:753:HOH:O	2.34	0.43
1:A:391:GLU:HG2	1:A:450:ARG:HB2	2.00	0.43
1:B:555:ARG:NH1	4:B:697:HOH:O	2.51	0.42
1:A:458:GLY:HA2	1:A:644:LEU:HD21	2.02	0.42
1:A:525:GLN:HG2	1:A:586:ILE:HG12	2.02	0.42
1:B:548:LEU:HD13	1:B:556:ILE:HD12	2.01	0.41
1:A:503:LYS:O	1:A:507:ILE:HG12	2.21	0.41
1:B:525:GLN:HG2	1:B:586:ILE:HG12	2.02	0.40
1:A:448:ILE:CD1	1:A:601:ILE:HD11	2.51	0.40

There are no symmetry-related clashes.

5.3 Torsion angles [i](#)

5.3.1 Protein backbone [i](#)

In the following table, the Percentiles column shows the percent Ramachandran outliers of the chain as a percentile score with respect to all X-ray entries followed by that with respect to entries of similar resolution.

The Analysed column shows the number of residues for which the backbone conformation was analysed, and the total number of residues.

Mol	Chain	Analysed	Favoured	Allowed	Outliers	Percentiles	
1	A	228/229 (100%)	221 (97%)	6 (3%)	1 (0%)	39	20
1	B	221/229 (96%)	215 (97%)	5 (2%)	1 (0%)	34	15
All	All	449/458 (98%)	436 (97%)	11 (2%)	2 (0%)	34	20

All (2) Ramachandran outliers are listed below:

Mol	Chain	Res	Type
1	A	403	GLU
1	B	403	GLU

5.3.2 Protein sidechains [i](#)

In the following table, the Percentiles column shows the percent sidechain outliers of the chain as a percentile score with respect to all X-ray entries followed by that with respect to entries of similar resolution.

The Analysed column shows the number of residues for which the sidechain conformation was analysed, and the total number of residues.

Mol	Chain	Analysed	Rotameric	Outliers	Percentiles	
1	A	178/197 (90%)	174 (98%)	4 (2%)	60	39
1	B	175/197 (89%)	172 (98%)	3 (2%)	68	51
All	All	353/394 (90%)	346 (98%)	7 (2%)	68	44

All (7) residues with a non-rotameric sidechain are listed below:

Mol	Chain	Res	Type
1	A	459	SER

Continued on next page...

Continued from previous page...

Mol	Chain	Res	Type
1	A	539	ILE
1	A	577	TYR
1	A	642	SER
1	B	573	SER
1	B	610[A]	LEU
1	B	610[B]	LEU

Some sidechains can be flipped to improve hydrogen bonding and reduce clashes. All (1) such sidechains are listed below:

Mol	Chain	Res	Type
1	B	597	ASN

5.3.3 RNA [i](#)

There are no RNA molecules in this entry.

5.4 Non-standard residues in protein, DNA, RNA chains [i](#)

There are no non-standard protein/DNA/RNA residues in this entry.

5.5 Carbohydrates [i](#)

There are no carbohydrates in this entry.

5.6 Ligand geometry [i](#)

Of 4 ligands modelled in this entry, 2 are monoatomic - leaving 2 for Mogul analysis.

In the following table, the Counts columns list the number of bonds (or angles) for which Mogul statistics could be retrieved, the number of bonds (or angles) that are observed in the model and the number of bonds (or angles) that are defined in the chemical component dictionary. The Link column lists molecule types, if any, to which the group is linked. The Z score for a bond length (or angle) is the number of standard deviations the observed value is removed from the expected value. A bond length (or angle) with $|Z| > 2$ is considered an outlier worth inspection. RMSZ is the root-mean-square of all Z scores of the bond lengths (or angles).

Mol	Type	Chain	Res	Link	Bond lengths			Bond angles		
					Counts	RMSZ	$\# Z > 2$	Counts	RMSZ	$\# Z > 2$
3	ATP	A	1	-	24,33,33	1.17	2 (8%)	31,52,52	1.85	3 (9%)
3	ATP	B	2	-	24,33,33	1.09	2 (8%)	31,52,52	1.77	3 (9%)

In the following table, the Chirals column lists the number of chiral outliers, the number of chiral centers analysed, the number of these observed in the model and the number defined in the chemical component dictionary. Similar counts are reported in the Torsion and Rings columns. '-' means no outliers of that kind were identified.

Mol	Type	Chain	Res	Link	Chirals	Torsions	Rings
3	ATP	A	1	-	-	0/18/38/38	0/3/3/3
3	ATP	B	2	-	-	0/18/38/38	0/3/3/3

All (4) bond length outliers are listed below:

Mol	Chain	Res	Type	Atoms	Z	Observed(Å)	Ideal(Å)
3	A	1	ATP	O4'-C1'	2.44	1.44	1.41
3	B	2	ATP	O4'-C1'	2.48	1.44	1.41
3	B	2	ATP	C5-C4	2.83	1.46	1.40
3	A	1	ATP	C5-C4	3.09	1.47	1.40

All (6) bond angle outliers are listed below:

Mol	Chain	Res	Type	Atoms	Z	Observed(°)	Ideal(°)
3	A	1	ATP	N3-C2-N1	-7.88	122.86	128.89
3	B	2	ATP	N3-C2-N1	-7.24	123.35	128.89
3	A	1	ATP	C4-C5-N7	-2.90	106.81	109.48
3	B	2	ATP	O2B-PB-O1B	2.03	123.54	112.53
3	A	1	ATP	C2-N1-C6	2.04	122.42	118.77
3	B	2	ATP	C2-N1-C6	2.12	122.56	118.77

There are no chirality outliers.

There are no torsion outliers.

There are no ring outliers.

No monomer is involved in short contacts.

5.7 Other polymers [i](#)

There are no such residues in this entry.

5.8 Polymer linkage issues [i](#)

There are no chain breaks in this entry.

6 Fit of model and data ⓘ

6.1 Protein, DNA and RNA chains ⓘ

In the following table, the column labelled ‘#RSRZ> 2’ contains the number (and percentage) of RSRZ outliers, followed by percent RSRZ outliers for the chain as percentile scores relative to all X-ray entries and entries of similar resolution. The OWAB column contains the minimum, median, 95th percentile and maximum values of the occupancy-weighted average B-factor per residue. The column labelled ‘Q< 0.9’ lists the number of (and percentage) of residues with an average occupancy less than 0.9.

Mol	Chain	Analysed	<RSRZ>	#RSRZ>2	OWAB(Å ²)	Q<0.9
1	A	226/229 (98%)	0.82	37 (16%) 2 2	10, 24, 44, 49	0
1	B	219/229 (95%)	0.52	16 (7%) 18 20	10, 22, 40, 50	0
All	All	445/458 (97%)	0.68	53 (11%) 6 7	10, 23, 41, 50	0

All (53) RSRZ outliers are listed below:

Mol	Chain	Res	Type	RSRZ
1	B	546	ILE	7.6
1	A	403	GLU	5.9
1	A	534	ALA	5.7
1	A	577	TYR	5.3
1	A	640	PHE	5.2
1	A	404	GLY	4.8
1	A	438	THR	4.8
1	A	388	THR	4.5
1	A	533	PHE	4.4
1	B	495	SER	4.4
1	B	496	TRP	4.4
1	A	496	TRP	4.2
1	B	637	GLN	4.0
1	B	543	GLU	3.8
1	A	386	SER	3.7
1	A	437	GLY	3.5
1	B	494	PHE	3.4
1	B	617	LEU	3.3
1	A	546	ILE	3.2
1	A	617	LEU	3.2
1	A	645	MET	3.2
1	A	494	PHE	3.1
1	B	577	TYR	3.1
1	A	635	ASN	2.9

Continued on next page...

Continued from previous page...

Mol	Chain	Res	Type	RSRZ
1	A	634	GLN	2.9
1	A	456	VAL	2.9
1	A	515	TYR	2.8
1	A	605	SER	2.7
1	A	511	SER	2.6
1	B	456	VAL	2.6
1	A	508	PHE	2.5
1	B	534	ALA	2.5
1	B	515	TYR	2.5
1	A	642	SER	2.4
1	A	509	GLY	2.4
1	B	512	TYR	2.4
1	A	527	GLU	2.4
1	A	526	LEU	2.3
1	A	644	LEU	2.3
1	A	539	ILE	2.3
1	B	556	ILE	2.3
1	B	638	PRO	2.3
1	A	538	ASN	2.2
1	A	639	ASP	2.2
1	B	636	LEU	2.2
1	A	530	ILE	2.2
1	B	403	GLU	2.1
1	A	558	LEU	2.1
1	A	455	ALA	2.1
1	A	556	ILE	2.1
1	A	499	PRO	2.0
1	A	601	ILE	2.0
1	A	467	LEU	2.0

6.2 Non-standard residues in protein, DNA, RNA chains ⓘ

There are no non-standard protein/DNA/RNA residues in this entry.

6.3 Carbohydrates ⓘ

There are no carbohydrates in this entry.

6.4 Ligands [i](#)

In the following table, the Atoms column lists the number of modelled atoms in the group and the number defined in the chemical component dictionary. LLDF column lists the quality of electron density of the group with respect to its neighbouring residues in protein, DNA or RNA chains. The B-factors column lists the minimum, median, 95th percentile and maximum values of B factors of atoms in the group. The column labelled 'Q< 0.9' lists the number of atoms with occupancy less than 0.9.

Mol	Type	Chain	Res	Atoms	RSCC	RSR	LLDF	B-factors(\AA^2)	Q<0.9
3	ATP	A	1	31/31	0.98	0.08	-0.61	8,17,28,28	0
3	ATP	B	2	31/31	0.98	0.08	-0.63	11,21,27,30	0
2	MG	A	3	1/1	0.99	0.10	-	11,11,11,11	0
2	MG	B	4	1/1	1.00	0.06	-	13,13,13,13	0

6.5 Other polymers [i](#)

There are no such residues in this entry.