



wwPDB X-ray Structure Validation Summary Report ⓘ

Feb 1, 2016 – 07:51 PM GMT

PDB ID : 4Q5J
Title : Crystal structure of SeMet derivative BRI1 in complex with BKI1
Authors : Wang, J.; Wang, J.; Chen, L.; Wu, J.W.; Wang, Z.X.
Deposited on : 2014-04-17
Resolution : 2.77 Å(reported)

This is a wwPDB X-ray Structure Validation Summary Report for a publicly released PDB entry.
We welcome your comments at validation@mail.wwpdb.org
A user guide is available at
<http://wwpdb.org/validation/2016/XrayValidationReportHelp>
with specific help available everywhere you see the ⓘ symbol.

The following versions of software and data (see [references ⓘ](#)) were used in the production of this report:

MolProbity : 4.02b-467
Mogul : 1.7 (RC4), CSD as536be (2015)
Xtriage (Phenix) : 1.9-1692
EDS : rb-20026688
Percentile statistics : 20151230.v01 (using entries in the PDB archive December 30th 2015)
Refmac : 5.8.0135
CCP4 : 6.5.0
Ideal geometry (proteins) : Engh & Huber (2001)
Ideal geometry (DNA, RNA) : Parkinson et al. (1996)
Validation Pipeline (wwPDB-VP) : trunk26865

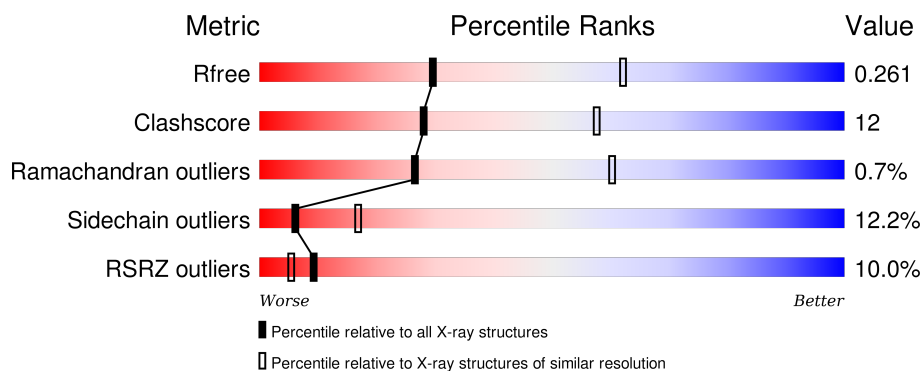
1 Overall quality at a glance ⓘ

The following experimental techniques were used to determine the structure:

X-RAY DIFFRACTION

The reported resolution of this entry is 2.77 Å.

Percentile scores (ranging between 0-100) for global validation metrics of the entry are shown in the following graphic. The table shows the number of entries on which the scores are based.



Metric	Whole archive (#Entries)	Similar resolution (#Entries, resolution range(Å))
R_{free}	91344	3004 (2.80-2.76)
Clashscore	102246	3480 (2.80-2.76)
Ramachandran outliers	100387	3423 (2.80-2.76)
Sidechain outliers	100360	3425 (2.80-2.76)
RSRZ outliers	91569	3016 (2.80-2.76)

The table below summarises the geometric issues observed across the polymeric chains and their fit to the electron density. The red, orange, yellow and green segments on the lower bar indicate the fraction of residues that contain outliers for ≥ 3 , 2, 1 and 0 types of geometric quality criteria. A grey segment represents the fraction of residues that are not modelled. The numeric value for each fraction is indicated below the corresponding segment, with a dot representing fractions $\leq 5\%$. The upper red bar (where present) indicates the fraction of residues that have poor fit to the electron density. The numeric value is given above the bar.

Mol	Chain	Length	Quality of chain
1	A	341	<div> <div>8%</div> <div>62%</div> <div>23%</div> <div>•</div> <div>13%</div> </div>
1	B	341	<div> <div>6%</div> <div>59%</div> <div>24%</div> <div>•</div> <div>14%</div> </div>
2	E	21	<div> <div>29%</div> <div>38%</div> <div>29%</div> <div>5%</div> <div>29%</div> </div>
2	F	21	<div> <div>19%</div> <div>38%</div> <div>33%</div> <div>5%</div> <div>24%</div> </div>

2 Entry composition

There are 4 unique types of molecules in this entry. The entry contains 4912 atoms, of which 0 are hydrogens and 0 are deuteriums.

In the tables below, the ZeroOcc column contains the number of atoms modelled with zero occupancy, the AltConf column contains the number of residues with at least one atom in alternate conformation and the Trace column contains the number of residues modelled with at most 2 atoms.

- Molecule 1 is a protein called Protein BRASSINOSTEROID INSENSITIVE 1.

Mol	Chain	Residues	Atoms							ZeroOcc	AltConf	Trace
1	A	298	Total	C	N	O	P	S	Se	0	0	0
			2319	1468	397	434	4	4	12			
1	B	294	Total	C	N	O	P	S	Se	0	0	0
			2304	1463	398	423	4	4	12			

There are 46 discrepancies between the modelled and reference sequences:

Chain	Residue	Modelled	Actual	Comment	Reference
A	840	MSE	-	EXPRESSION TAG	UNP O22476
A	841	GLY	-	EXPRESSION TAG	UNP O22476
A	842	SER	-	EXPRESSION TAG	UNP O22476
A	843	SER	-	EXPRESSION TAG	UNP O22476
A	844	HIS	-	EXPRESSION TAG	UNP O22476
A	845	HIS	-	EXPRESSION TAG	UNP O22476
A	846	HIS	-	EXPRESSION TAG	UNP O22476
A	847	HIS	-	EXPRESSION TAG	UNP O22476
A	848	HIS	-	EXPRESSION TAG	UNP O22476
A	849	HIS	-	EXPRESSION TAG	UNP O22476
A	850	SER	-	EXPRESSION TAG	UNP O22476
A	851	GLN	-	EXPRESSION TAG	UNP O22476
A	852	ASP	-	EXPRESSION TAG	UNP O22476
A	853	LEU	-	EXPRESSION TAG	UNP O22476
A	854	GLU	-	EXPRESSION TAG	UNP O22476
A	855	VAL	-	EXPRESSION TAG	UNP O22476
A	856	LEU	-	EXPRESSION TAG	UNP O22476
A	857	PHE	-	EXPRESSION TAG	UNP O22476
A	858	GLN	-	EXPRESSION TAG	UNP O22476
A	859	GLY	-	EXPRESSION TAG	UNP O22476
A	860	PRO	-	EXPRESSION TAG	UNP O22476
A	861	HIS	-	EXPRESSION TAG	UNP O22476
A	862	MSE	-	EXPRESSION TAG	UNP O22476
B	840	MSE	-	EXPRESSION TAG	UNP O22476
B	841	GLY	-	EXPRESSION TAG	UNP O22476

Continued on next page...

Continued from previous page...

Chain	Residue	Modelled	Actual	Comment	Reference
B	842	SER	-	EXPRESSION TAG	UNP O22476
B	843	SER	-	EXPRESSION TAG	UNP O22476
B	844	HIS	-	EXPRESSION TAG	UNP O22476
B	845	HIS	-	EXPRESSION TAG	UNP O22476
B	846	HIS	-	EXPRESSION TAG	UNP O22476
B	847	HIS	-	EXPRESSION TAG	UNP O22476
B	848	HIS	-	EXPRESSION TAG	UNP O22476
B	849	HIS	-	EXPRESSION TAG	UNP O22476
B	850	SER	-	EXPRESSION TAG	UNP O22476
B	851	GLN	-	EXPRESSION TAG	UNP O22476
B	852	ASP	-	EXPRESSION TAG	UNP O22476
B	853	LEU	-	EXPRESSION TAG	UNP O22476
B	854	GLU	-	EXPRESSION TAG	UNP O22476
B	855	VAL	-	EXPRESSION TAG	UNP O22476
B	856	LEU	-	EXPRESSION TAG	UNP O22476
B	857	PHE	-	EXPRESSION TAG	UNP O22476
B	858	GLN	-	EXPRESSION TAG	UNP O22476
B	859	GLY	-	EXPRESSION TAG	UNP O22476
B	860	PRO	-	EXPRESSION TAG	UNP O22476
B	861	HIS	-	EXPRESSION TAG	UNP O22476
B	862	MSE	-	EXPRESSION TAG	UNP O22476

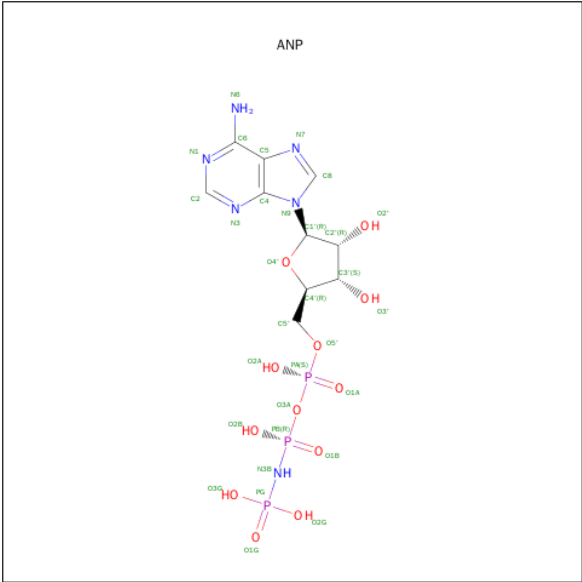
- Molecule 2 is a protein called BRI1 kinase inhibitor 1.

Mol	Chain	Residues	Atoms					ZeroOcc	AltConf	Trace
2	F	16	Total 116	C 71	N 20	O 23	S 2	0	0	0
2	E	15	Total 109	C 67	N 19	O 21	S 2	0	0	0

There are 2 discrepancies between the modelled and reference sequences:

Chain	Residue	Modelled	Actual	Comment	Reference
F	326	TYR	-	EXPRESSION TAG	UNP Q9FMZ0
E	326	TYR	-	EXPRESSION TAG	UNP Q9FMZ0

- Molecule 3 is PHOSPHOAMINOPHOSPHONIC ACID-ADENYLATE ESTER (three-letter code: ANP) (formula: C₁₀H₁₇N₆O₁₂P₃).



Mol	Chain	Residues	Atoms					ZeroOcc	AltConf
3	A	1	Total	C	N	O	P	0	0
			31	10	6	12	3		
3	B	1	Total	C	N	O	P	0	0
			31	10	6	12	3		

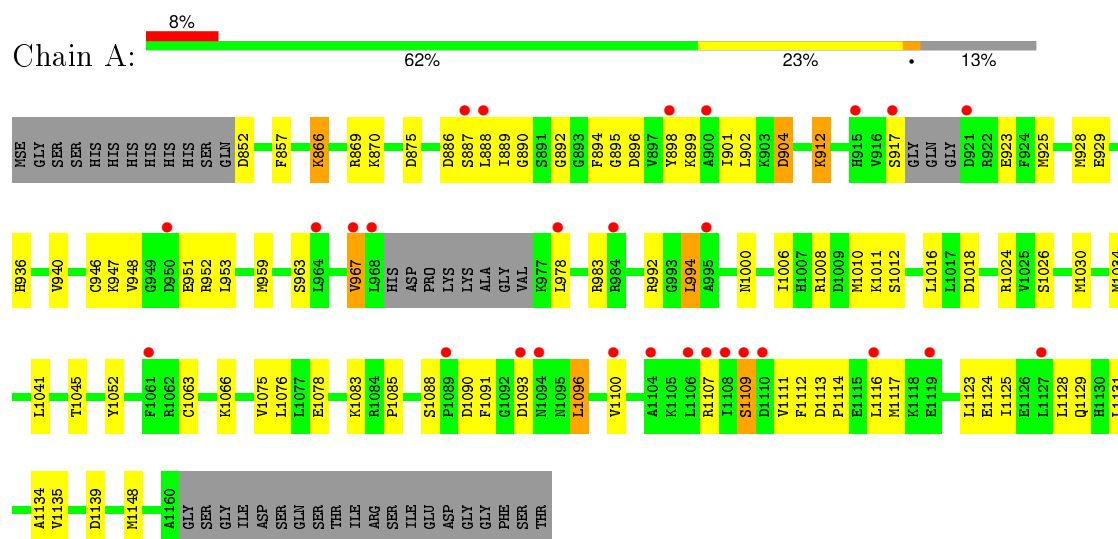
- Molecule 4 is water.

Mol	Chain	Residues	Atoms		ZeroOcc	AltConf
4	A	2	Total	O	0	0
			2	2		

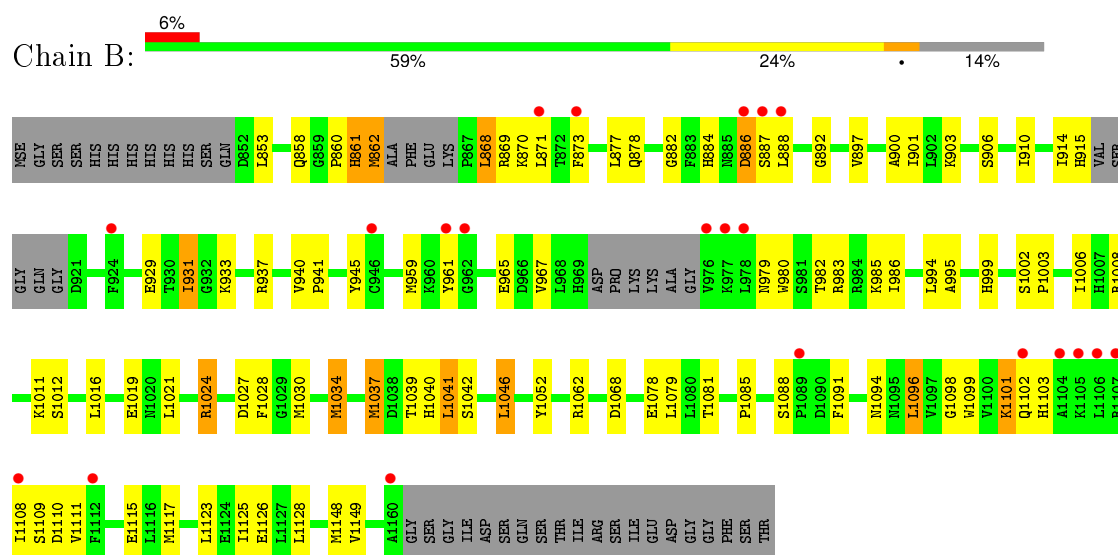
3 Residue-property plots

These plots are drawn for all protein, RNA and DNA chains in the entry. The first graphic for a chain summarises the proportions of errors displayed in the second graphic. The second graphic shows the sequence view annotated by issues in geometry and electron density. Residues are color-coded according to the number of geometric quality criteria for which they contain at least one outlier: green = 0, yellow = 1, orange = 2 and red = 3 or more. A red dot above a residue indicates a poor fit to the electron density ($RSRZ > 2$). Stretches of 2 or more consecutive residues without any outlier are shown as a green connector. Residues present in the sample, but not in the model, are shown in grey.

• Molecule 1: Protein BRASSINOSTEROID INSENSITIVE 1



• Molecule 1: Protein BRASSINOSTEROID INSENSITIVE 1

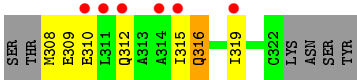


• Molecule 2: BRI1 kinase inhibitor 1





● Molecule 2: BRI1 kinase inhibitor 1



4 Data and refinement statistics

Property	Value	Source
Space group	P 1 21 1	Depositor
Cell constants a, b, c, α , β , γ	63.72Å 80.29Å 80.56Å 90.00° 109.55° 90.00°	Depositor
Resolution (Å)	38.41 – 2.77 38.41 – 2.77	Depositor EDS
% Data completeness (in resolution range)	99.4 (38.41-2.77) 98.8 (38.41-2.77)	Depositor EDS
R_{merge}	0.10	Depositor
R_{sym}	(Not available)	Depositor
$\langle I/\sigma(I) \rangle$ ¹	6.66 (at 2.77Å)	Xtriage
Refinement program	PHENIX (phenix.refine: 1.8.4_1496)	Depositor
R, R_{free}	0.201 , 0.259 0.213 , 0.261	Depositor DCC
R_{free} test set	995 reflections (5.42%)	DCC
Wilson B-factor (Å ²)	71.2	Xtriage
Anisotropy	0.746	Xtriage
Bulk solvent k_{sol} (e/Å ³), B_{sol} (Å ²)	0.28 , 49.2	EDS
Estimated twinning fraction	No twinning to report.	Xtriage
L-test for twinning ²	$\langle L \rangle = 0.50$, $\langle L^2 \rangle = 0.33$	Xtriage
Outliers	0 of 19335 reflections	Xtriage
F_o, F_c correlation	0.94	EDS
Total number of atoms	4912	wwPDB-VP
Average B, all atoms (Å ²)	76.0	wwPDB-VP

Xtriage's analysis on translational NCS is as follows: *The largest off-origin peak in the Patterson function is 6.13% of the height of the origin peak. No significant pseudotranslation is detected.*

¹Intensities estimated from amplitudes.

²Theoretical values of $\langle |L| \rangle$, $\langle L^2 \rangle$ for acentric reflections are 0.5, 0.375 respectively for untwinned datasets, and 0.333, 0.2 for perfectly twinned datasets.

5 Model quality [i](#)

5.1 Standard geometry [i](#)

Bond lengths and bond angles in the following residue types are not validated in this section: TPO, ANP, SEP

The Z score for a bond length (or angle) is the number of standard deviations the observed value is removed from the expected value. A bond length (or angle) with $|Z| > 5$ is considered an outlier worth inspection. RMSZ is the root-mean-square of all Z scores of the bond lengths (or angles).

Mol	Chain	Bond lengths		Bond angles	
		RMSZ	# $ Z > 5$	RMSZ	# $ Z > 5$
1	A	0.62	0/2309	0.77	0/3096
1	B	0.61	0/2294	0.76	4/3070 (0.1%)
2	E	0.32	0/109	0.50	0/146
2	F	0.31	0/116	0.55	0/156
All	All	0.60	0/4828	0.76	4/6468 (0.1%)

There are no bond length outliers.

All (4) bond angle outliers are listed below:

Mol	Chain	Res	Type	Atoms	Z	Observed(°)	Ideal(°)
1	B	1041	LEU	CB-CG-CD2	-5.54	101.58	111.00
1	B	1008	ARG	NE-CZ-NH1	5.47	123.03	120.30
1	B	1068	ASP	CB-CG-OD1	5.40	123.16	118.30
1	B	1037	MSE	CG-SE-CE	-5.28	87.29	98.90

There are no chirality outliers.

There are no planarity outliers.

5.2 Too-close contacts [i](#)

In the following table, the Non-H and H(model) columns list the number of non-hydrogen atoms and hydrogen atoms in the chain respectively. The H(added) column lists the number of hydrogen atoms added and optimized by MolProbity. The Clashes column lists the number of clashes within the asymmetric unit, whereas Symm-Clashes lists symmetry related clashes.

Mol	Chain	Non-H	H(model)	H(added)	Clashes	Symm-Clashes
1	A	2319	0	2250	49	0
1	B	2304	0	2275	55	0
2	E	109	0	106	6	0

Continued on next page...

Continued from previous page...

Mol	Chain	Non-H	H(model)	H(added)	Clashes	Symm-Clashes
2	F	116	0	113	5	0
3	A	31	0	13	2	0
3	B	31	0	13	2	0
4	A	2	0	0	0	0
All	All	4912	0	4770	113	0

The all-atom clashscore is defined as the number of clashes found per 1000 atoms (including hydrogen atoms). The all-atom clashscore for this structure is 12.

The worst 5 of 113 close contacts within the same asymmetric unit are listed below, sorted by their clash magnitude.

Atom-1	Atom-2	Interatomic distance (Å)	Clash overlap (Å)
1:B:1091:PHE:HB3	1:B:1094:ASN:O	1.80	0.81
1:B:940:VAL:HG11	1:B:1016:LEU:HD12	1.60	0.81
1:A:1125:ILE:HA	1:A:1128:LEU:HD12	1.66	0.77
1:B:1098:GLY:HA2	1:B:1101:LYS:HD2	1.65	0.77
3:A:1201:ANP:H5'1	3:A:1201:ANP:O2B	1.88	0.73

There are no symmetry-related clashes.

5.3 Torsion angles ⓘ

5.3.1 Protein backbone ⓘ

In the following table, the Percentiles column shows the percent Ramachandran outliers of the chain as a percentile score with respect to all X-ray entries followed by that with respect to entries of similar resolution.

The Analysed column shows the number of residues for which the backbone conformation was analysed, and the total number of residues.

Mol	Chain	Analysed	Favoured	Allowed	Outliers	Percentiles	
1	A	288/341 (84%)	270 (94%)	17 (6%)	1 (0%)	46	78
1	B	282/341 (83%)	268 (95%)	11 (4%)	3 (1%)	17	47
2	E	13/21 (62%)	13 (100%)	0	0	100	100
2	F	14/21 (67%)	14 (100%)	0	0	100	100
All	All	597/724 (82%)	565 (95%)	28 (5%)	4 (1%)	26	60

All (4) Ramachandran outliers are listed below:

Mol	Chain	Res	Type
1	B	860	PRO
1	B	1027	ASP
1	B	861	HIS
1	A	967	VAL

5.3.2 Protein sidechains ⓘ

In the following table, the Percentiles column shows the percent sidechain outliers of the chain as a percentile score with respect to all X-ray entries followed by that with respect to entries of similar resolution.

The Analysed column shows the number of residues for which the sidechain conformation was analysed, and the total number of residues.

Mol	Chain	Analysed	Rotameric	Outliers	Percentiles	
1	A	239/273 (88%)	212 (89%)	27 (11%)	7	20
1	B	240/273 (88%)	213 (89%)	27 (11%)	7	20
2	E	10/16 (62%)	7 (70%)	3 (30%)	0	1
2	F	11/16 (69%)	7 (64%)	4 (36%)	0	0
All	All	500/578 (86%)	439 (88%)	61 (12%)	6	17

5 of 61 residues with a non-rotameric sidechain are listed below:

Mol	Chain	Res	Type
1	B	853	LEU
1	B	888	LEU
2	F	316	GLN
1	B	858	GLN
1	B	868	LEU

Some sidechains can be flipped to improve hydrogen bonding and reduce clashes. All (3) such sidechains are listed below:

Mol	Chain	Res	Type
1	A	936	HIS
1	A	1103	HIS
1	B	861	HIS

5.3.3 RNA ⓘ

There are no RNA molecules in this entry.

5.4 Non-standard residues in protein, DNA, RNA chains ⓘ

8 non-standard protein/DNA/RNA residues are modelled in this entry.

In the following table, the Counts columns list the number of bonds (or angles) for which Mogul statistics could be retrieved, the number of bonds (or angles) that are observed in the model and the number of bonds (or angles) that are defined in the chemical component dictionary. The Link column lists molecule types, if any, to which the group is linked. The Z score for a bond length (or angle) is the number of standard deviations the observed value is removed from the expected value. A bond length (or angle) with $|Z| > 2$ is considered an outlier worth inspection. RMSZ is the root-mean-square of all Z scores of the bond lengths (or angles).

Mol	Type	Chain	Res	Link	Bond lengths			Bond angles		
					Counts	RMSZ	# Z > 2	Counts	RMSZ	# Z > 2
1	TPO	A	1039	1	8,10,11	1.15	2 (25%)	7,14,16	1.74	2 (28%)
1	SEP	A	1042	1	8,9,10	1.58	2 (25%)	8,12,14	0.83	0
1	SEP	A	1044	1	8,9,10	1.49	2 (25%)	8,12,14	1.69	1 (12%)
1	SEP	A	1060	1	8,9,10	1.61	2 (25%)	8,12,14	1.30	1 (12%)
1	TPO	B	1039	1	8,10,11	0.96	0	7,14,16	1.60	3 (42%)
1	SEP	B	1042	1	8,9,10	1.60	2 (25%)	8,12,14	1.24	0
1	SEP	B	1044	1	8,9,10	1.61	2 (25%)	8,12,14	1.20	1 (12%)
1	SEP	B	1060	1	8,9,10	1.67	1 (12%)	8,12,14	3.47	5 (62%)

In the following table, the Chirals column lists the number of chiral outliers, the number of chiral centers analysed, the number of these observed in the model and the number defined in the chemical component dictionary. Similar counts are reported in the Torsion and Rings columns. '-' means no outliers of that kind were identified.

Mol	Type	Chain	Res	Link	Chirals	Torsions	Rings
1	TPO	A	1039	1	-	0/8/11/13	0/0/0/0
1	SEP	A	1042	1	-	0/6/8/10	0/0/0/0
1	SEP	A	1044	1	-	0/6/8/10	0/0/0/0
1	SEP	A	1060	1	-	0/6/8/10	0/0/0/0
1	TPO	B	1039	1	-	0/8/11/13	0/0/0/0
1	SEP	B	1042	1	-	0/6/8/10	0/0/0/0
1	SEP	B	1044	1	-	0/6/8/10	0/0/0/0
1	SEP	B	1060	1	-	0/6/8/10	0/0/0/0

The worst 5 of 13 bond length outliers are listed below:

Mol	Chain	Res	Type	Atoms	Z	Observed(Å)	Ideal(Å)
1	A	1039	TPO	P-O3P	2.02	1.61	1.54
1	A	1039	TPO	P-O2P	2.04	1.62	1.54

Continued on next page...

Continued from previous page...

Mol	Chain	Res	Type	Atoms	Z	Observed(Å)	Ideal(Å)
1	A	1042	SEP	P-O2P	2.06	1.62	1.54
1	A	1044	SEP	P-O2P	2.07	1.62	1.54
1	A	1060	SEP	P-O2P	2.09	1.62	1.54

The worst 5 of 13 bond angle outliers are listed below:

Mol	Chain	Res	Type	Atoms	Z	Observed(°)	Ideal(°)
1	A	1039	TPO	CG2-CB-CA	-3.49	106.07	113.17
1	B	1039	TPO	CG2-CB-CA	-2.70	107.68	113.17
1	B	1060	SEP	O-C-CA	-2.31	119.47	125.49
1	B	1039	TPO	O-C-CA	-2.10	119.89	125.44
1	A	1039	TPO	O-C-CA	-2.03	120.07	125.44

There are no chirality outliers.

There are no torsion outliers.

There are no ring outliers.

2 monomers are involved in 2 short contacts:

Mol	Chain	Res	Type	Clashes	Symm-Clashes
1	B	1039	TPO	1	0
1	B	1042	SEP	1	0

5.5 Carbohydrates [i](#)

There are no carbohydrates in this entry.

5.6 Ligand geometry [i](#)

2 ligands are modelled in this entry.

In the following table, the Counts columns list the number of bonds (or angles) for which Mogul statistics could be retrieved, the number of bonds (or angles) that are observed in the model and the number of bonds (or angles) that are defined in the chemical component dictionary. The Link column lists molecule types, if any, to which the group is linked. The Z score for a bond length (or angle) is the number of standard deviations the observed value is removed from the expected value. A bond length (or angle) with $|Z| > 2$ is considered an outlier worth inspection. RMSZ is the root-mean-square of all Z scores of the bond lengths (or angles).

Mol	Type	Chain	Res	Link	Bond lengths			Bond angles		
					Counts	RMSZ	# Z > 2	Counts	RMSZ	# Z > 2
3	ANP	A	1201	-	27,33,33	2.34	4 (14%)	30,52,52	1.19	2 (6%)
3	ANP	B	1201	-	27,33,33	2.48	5 (18%)	30,52,52	0.97	2 (6%)

In the following table, the Chirals column lists the number of chiral outliers, the number of chiral centers analysed, the number of these observed in the model and the number defined in the chemical component dictionary. Similar counts are reported in the Torsion and Rings columns. '-' means no outliers of that kind were identified.

Mol	Type	Chain	Res	Link	Chirals	Torsions	Rings
3	ANP	A	1201	-	-	0/12/38/38	0/3/3/3
3	ANP	B	1201	-	-	0/12/38/38	0/3/3/3

The worst 5 of 9 bond length outliers are listed below:

Mol	Chain	Res	Type	Atoms	Z	Observed(Å)	Ideal(Å)
3	B	1201	ANP	PG-O3G	-2.42	1.49	1.56
3	A	1201	ANP	PG-O3G	-2.30	1.50	1.56
3	B	1201	ANP	PB-N3B	2.27	1.69	1.63
3	A	1201	ANP	PB-O1B	2.41	1.48	1.46
3	B	1201	ANP	PG-N3B	2.63	1.70	1.63

All (4) bond angle outliers are listed below:

Mol	Chain	Res	Type	Atoms	Z	Observed(°)	Ideal(°)
3	A	1201	ANP	O1B-PB-N3B	-2.64	107.85	111.90
3	B	1201	ANP	O3A-PA-O5'	-2.48	96.35	102.94
3	A	1201	ANP	O2G-PG-O1G	-2.16	107.74	113.49
3	B	1201	ANP	O1B-PB-N3B	-2.08	108.71	111.90

There are no chirality outliers.

There are no torsion outliers.

There are no ring outliers.

2 monomers are involved in 4 short contacts:

Mol	Chain	Res	Type	Clashes	Symm-Clashes
3	A	1201	ANP	2	0
3	B	1201	ANP	2	0

5.7 Other polymers [i](#)

There are no such residues in this entry.

5.8 Polymer linkage issues [i](#)

There are no chain breaks in this entry.

6 Fit of model and data [i](#)

6.1 Protein, DNA and RNA chains [i](#)

In the following table, the column labelled ‘#RSRZ> 2’ contains the number (and percentage) of RSRZ outliers, followed by percent RSRZ outliers for the chain as percentile scores relative to all X-ray entries and entries of similar resolution. The OWAB column contains the minimum, median, 95th percentile and maximum values of the occupancy-weighted average B-factor per residue. The column labelled ‘Q< 0.9’ lists the number of (and percentage) of residues with an average occupancy less than 0.9.

Mol	Chain	Analysed	<RSRZ>	#RSRZ>2	OWAB(Å ²)	Q<0.9
1	A	282/341 (82%)	0.54	28 (9%) 9 5	21, 71, 128, 155	0
1	B	278/341 (81%)	0.53	21 (7%) 17 10	26, 73, 127, 143	0
2	E	15/21 (71%)	2.17	6 (40%) 0 0	108, 118, 128, 134	0
2	F	16/21 (76%)	1.78	4 (25%) 1 0	109, 118, 126, 136	0
All	All	591/724 (81%)	0.61	59 (9%) 9 5	21, 76, 128, 155	0

The worst 5 of 59 RSRZ outliers are listed below:

Mol	Chain	Res	Type	RSRZ
1	B	1102	GLN	8.2
1	A	1094	ASN	5.9
1	A	1100	VAL	5.8
1	B	1160	ALA	5.3
2	E	315	ILE	5.0

6.2 Non-standard residues in protein, DNA, RNA chains [i](#)

In the following table, the Atoms column lists the number of modelled atoms in the group and the number defined in the chemical component dictionary. LLDF column lists the quality of electron density of the group with respect to its neighbouring residues in protein, DNA or RNA chains. The B-factors column lists the minimum, median, 95th percentile and maximum values of B factors of atoms in the group. The column labelled ‘Q< 0.9’ lists the number of atoms with occupancy less than 0.9.

Mol	Type	Chain	Res	Atoms	RSCC	RSR	LLDF	B-factors(Å ²)	Q<0.9
1	TPO	B	1039	11/12	0.97	0.12	-	32,42,56,100	0
1	SEP	B	1042	10/11	0.96	0.14	-	39,48,62,68	0
1	SEP	B	1044	10/11	0.93	0.15	-	57,62,110,120	0
1	TPO	A	1039	11/12	0.96	0.12	-	38,46,70,86	0
1	SEP	A	1042	10/11	0.97	0.09	-	46,62,79,98	0

Continued on next page...

Continued from previous page...

Mol	Type	Chain	Res	Atoms	RSCC	RSR	LLDF	B-factors(\AA^2)	Q<0.9
1	SEP	B	1060	10/11	0.91	0.12	-	45,53,85,131	0
1	SEP	A	1060	10/11	0.90	0.15	-	62,71,143,195	0
1	SEP	A	1044	10/11	0.92	0.18	-	61,74,112,136	0

6.3 Carbohydrates [i](#)

There are no carbohydrates in this entry.

6.4 Ligands [i](#)

In the following table, the Atoms column lists the number of modelled atoms in the group and the number defined in the chemical component dictionary. LLDF column lists the quality of electron density of the group with respect to its neighbouring residues in protein, DNA or RNA chains. The B-factors column lists the minimum, median, 95th percentile and maximum values of B factors of atoms in the group. The column labelled 'Q< 0.9' lists the number of atoms with occupancy less than 0.9.

Mol	Type	Chain	Res	Atoms	RSCC	RSR	LLDF	B-factors(\AA^2)	Q<0.9
3	ANP	B	1201	31/31	0.89	0.18	-0.42	47,62,171,182	0
3	ANP	A	1201	31/31	0.85	0.17	-0.47	44,52,187,195	0

6.5 Other polymers [i](#)

There are no such residues in this entry.