



Full wwPDB X-ray Structure Validation Report ⓘ

Feb 1, 2016 – 11:50 AM GMT

PDB ID : 3Q6I
Title : Crystal structure of FabG4 and coenzyme binary complex
Authors : Dutta, D.; Bhattacharyya, S.; Das, A.K.
Deposited on : 2011-01-01
Resolution : 2.59 Å(reported)

This is a Full wwPDB X-ray Structure Validation Report for a publicly released PDB entry.
We welcome your comments at validation@mail.wwpdb.org
A user guide is available at
<http://wwpdb.org/validation/2016/XrayValidationReportHelp>
with specific help available everywhere you see the ⓘ symbol.

The following versions of software and data (see [references ⓘ](#)) were used in the production of this report:

MolProbity : 4.02b-467
Mogul : 1.7 (RC4), CSD as536be (2015)
Xtriage (Phenix) : 1.9-1692
EDS : rb-20026688
Percentile statistics : 20151230.v01 (using entries in the PDB archive December 30th 2015)
Refmac : 5.8.0135
CCP4 : 6.5.0
Ideal geometry (proteins) : Engh & Huber (2001)
Ideal geometry (DNA, RNA) : Parkinson et al. (1996)
Validation Pipeline (wwPDB-VP) : trunk26865

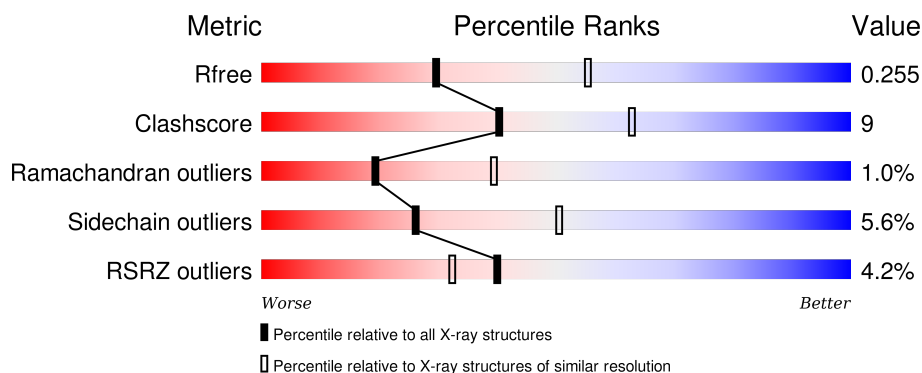
1 Overall quality at a glance

The following experimental techniques were used to determine the structure:

X-RAY DIFFRACTION

The reported resolution of this entry is 2.59 Å.

Percentile scores (ranging between 0-100) for global validation metrics of the entry are shown in the following graphic. The table shows the number of entries on which the scores are based.



Metric	Whole archive (#Entries)	Similar resolution (#Entries, resolution range(Å))
R_{free}	91344	2328 (2.60-2.60)
Clashscore	102246	2679 (2.60-2.60)
Ramachandran outliers	100387	2635 (2.60-2.60)
Sidechain outliers	100360	2635 (2.60-2.60)
RSRZ outliers	91569	2334 (2.60-2.60)

The table below summarises the geometric issues observed across the polymeric chains and their fit to the electron density. The red, orange, yellow and green segments on the lower bar indicate the fraction of residues that contain outliers for ≥ 3 , 2, 1 and 0 types of geometric quality criteria. A grey segment represents the fraction of residues that are not modelled. The numeric value for each fraction is indicated below the corresponding segment, with a dot representing fractions $\leq 5\%$. The upper red bar (where present) indicates the fraction of residues that have poor fit to the electron density. The numeric value is given above the bar.

Mol	Chain	Length	Quality of chain
1	A	446	<div> <div style="width: 100%; height: 10px; background-color: red; position: relative;"> % </div> <div style="display: flex; justify-content: space-between; margin-top: 5px;"> 76% 17% • • </div> </div>
1	B	446	<div> <div style="width: 100%; height: 10px; background-color: red; position: relative;"> 2% </div> <div style="display: flex; justify-content: space-between; margin-top: 5px;"> 77% 18% 5% </div> </div>
1	C	446	<div> <div style="width: 100%; height: 10px; background-color: red; position: relative;"> 4% </div> <div style="display: flex; justify-content: space-between; margin-top: 5px;"> 74% 17% • 6% </div> </div>
1	D	446	<div> <div style="width: 100%; height: 10px; background-color: red; position: relative;"> 8% </div> <div style="display: flex; justify-content: space-between; margin-top: 5px;"> 69% 21% • 8% </div> </div>

2 Entry composition

There are 4 unique types of molecules in this entry. The entry contains 12462 atoms, of which 0 are hydrogens and 0 are deuteriums.

In the tables below, the ZeroOcc column contains the number of atoms modelled with zero occupancy, the AltConf column contains the number of residues with at least one atom in alternate conformation and the Trace column contains the number of residues modelled with at most 2 atoms.

- Molecule 1 is a protein called 3-oxoacyl-(Acyl-carrier-protein) reductase.

Mol	Chain	Residues	Atoms					ZeroOcc	AltConf	Trace
1	A	427	Total	C	N	O	S	0	0	0
			3080	1925	553	595	7			
1	B	425	Total	C	N	O	S	0	0	0
			3059	1916	543	593	7			
1	C	418	Total	C	N	O	S	0	0	0
			2991	1871	530	584	6			
1	D	409	Total	C	N	O	S	0	0	0
			2927	1836	514	571	6			

There are 32 discrepancies between the modelled and reference sequences:

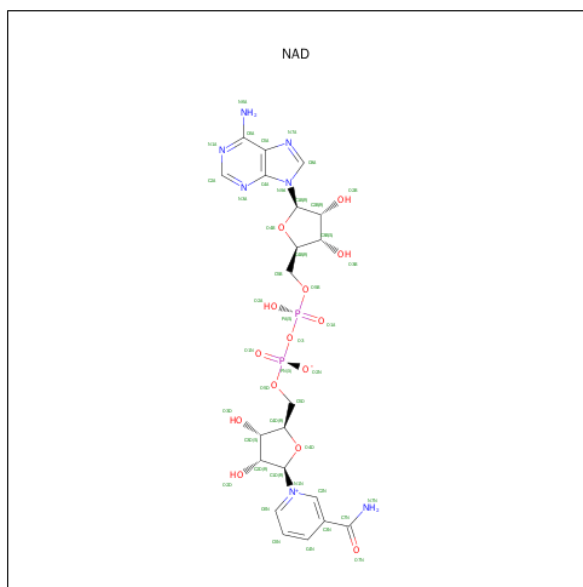
Chain	Residue	Modelled	Actual	Comment	Reference
A	9	HIS	-	EXPRESSION TAG	UNP O53665
A	10	HIS	-	EXPRESSION TAG	UNP O53665
A	11	HIS	-	EXPRESSION TAG	UNP O53665
A	12	HIS	-	EXPRESSION TAG	UNP O53665
A	13	HIS	-	EXPRESSION TAG	UNP O53665
A	14	HIS	-	EXPRESSION TAG	UNP O53665
A	15	GLY	-	EXPRESSION TAG	UNP O53665
A	16	SER	-	EXPRESSION TAG	UNP O53665
B	9	HIS	-	EXPRESSION TAG	UNP O53665
B	10	HIS	-	EXPRESSION TAG	UNP O53665
B	11	HIS	-	EXPRESSION TAG	UNP O53665
B	12	HIS	-	EXPRESSION TAG	UNP O53665
B	13	HIS	-	EXPRESSION TAG	UNP O53665
B	14	HIS	-	EXPRESSION TAG	UNP O53665
B	15	GLY	-	EXPRESSION TAG	UNP O53665
B	16	SER	-	EXPRESSION TAG	UNP O53665
C	9	HIS	-	EXPRESSION TAG	UNP O53665
C	10	HIS	-	EXPRESSION TAG	UNP O53665
C	11	HIS	-	EXPRESSION TAG	UNP O53665
C	12	HIS	-	EXPRESSION TAG	UNP O53665
C	13	HIS	-	EXPRESSION TAG	UNP O53665

Continued on next page...

Continued from previous page...

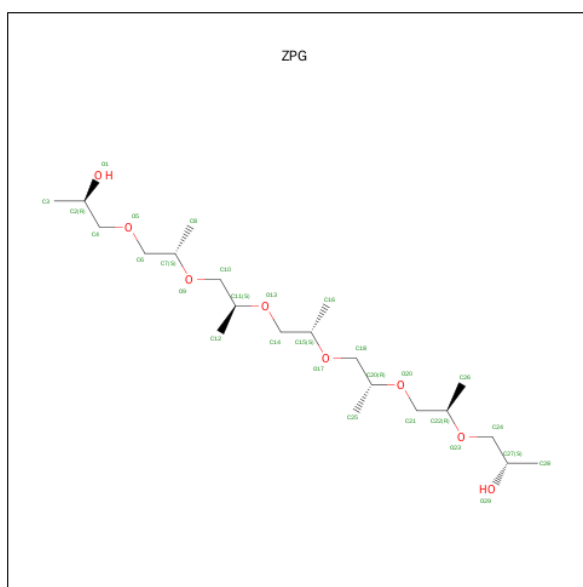
Chain	Residue	Modelled	Actual	Comment	Reference
C	14	HIS	-	EXPRESSION TAG	UNP O53665
C	15	GLY	-	EXPRESSION TAG	UNP O53665
C	16	SER	-	EXPRESSION TAG	UNP O53665
D	9	HIS	-	EXPRESSION TAG	UNP O53665
D	10	HIS	-	EXPRESSION TAG	UNP O53665
D	11	HIS	-	EXPRESSION TAG	UNP O53665
D	12	HIS	-	EXPRESSION TAG	UNP O53665
D	13	HIS	-	EXPRESSION TAG	UNP O53665
D	14	HIS	-	EXPRESSION TAG	UNP O53665
D	15	GLY	-	EXPRESSION TAG	UNP O53665
D	16	SER	-	EXPRESSION TAG	UNP O53665

- Molecule 2 is NICOTINAMIDE-ADENINE-DINUCLEOTIDE (three-letter code: NAD) (formula: $C_{21}H_{27}N_7O_{14}P_2$).



Mol	Chain	Residues	Atoms					ZeroOcc	AltConf
2	A	1	Total 44	C 21	N 7	O 14	P 2	0	0
2	B	1	Total 44	C 21	N 7	O 14	P 2	0	0
2	C	1	Total 44	C 21	N 7	O 14	P 2	0	0
2	D	1	Total 44	C 21	N 7	O 14	P 2	0	0

- Molecule 3 is (2S,5R,8R,11S,14S,17S,21R)-5,8,11,14,17-PENTAMETHYL-4,7,10,13,16,19-H EXAOXADOCOSANE-2,21-DIOL (three-letter code: ZPG) (formula: $C_{21}H_{44}O_8$).



Mol	Chain	Residues	Atoms			ZeroOcc	AltConf
3	A	1	Total	C	O	0	0
			13	9	4		

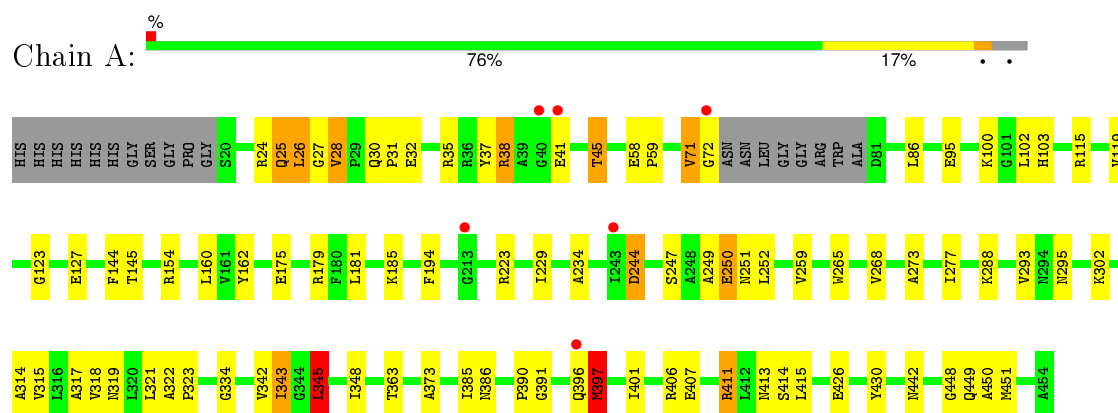
- Molecule 4 is water.

Mol	Chain	Residues	Atoms	ZeroOcc	AltConf
4	A	78	Total O 78 78	0	0
4	B	69	Total O 69 69	0	0
4	C	39	Total O 39 39	0	0
4	D	30	Total O 30 30	0	0

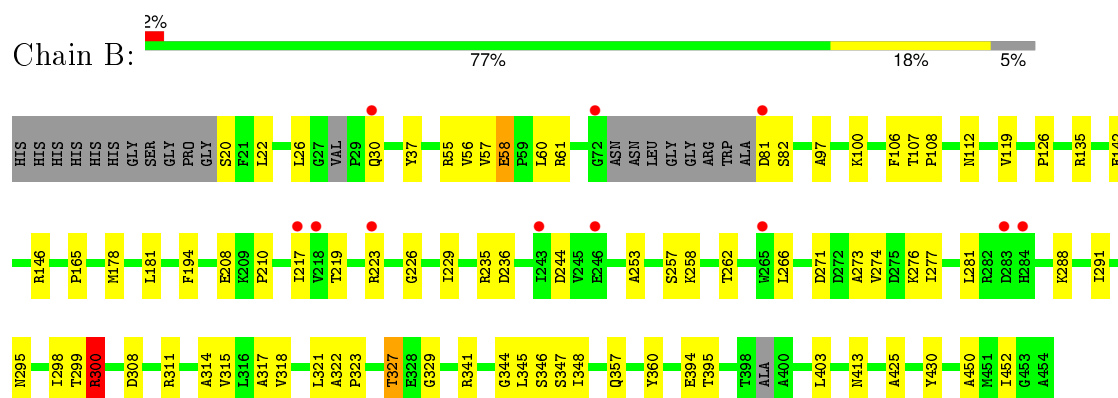
3 Residue-property plots [i](#)

These plots are drawn for all protein, RNA and DNA chains in the entry. The first graphic for a chain summarises the proportions of errors displayed in the second graphic. The second graphic shows the sequence view annotated by issues in geometry and electron density. Residues are color-coded according to the number of geometric quality criteria for which they contain at least one outlier: green = 0, yellow = 1, orange = 2 and red = 3 or more. A red dot above a residue indicates a poor fit to the electron density ($RSRZ > 2$). Stretches of 2 or more consecutive residues without any outlier are shown as a green connector. Residues present in the sample, but not in the model, are shown in grey.

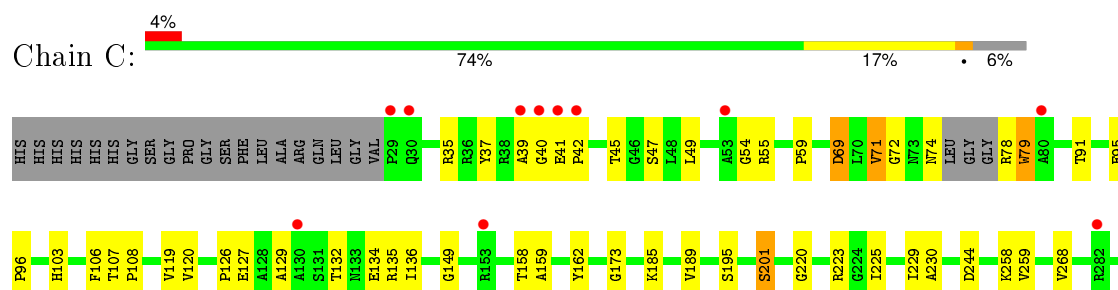
- Molecule 1: 3-oxoacyl-(Acyl-carrier-protein) reductase

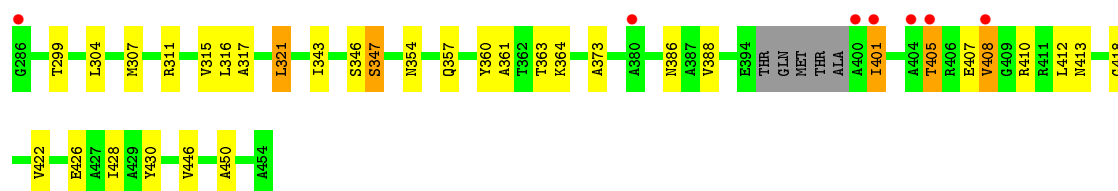


- Molecule 1: 3-oxoacyl-(Acyl-carrier-protein) reductase

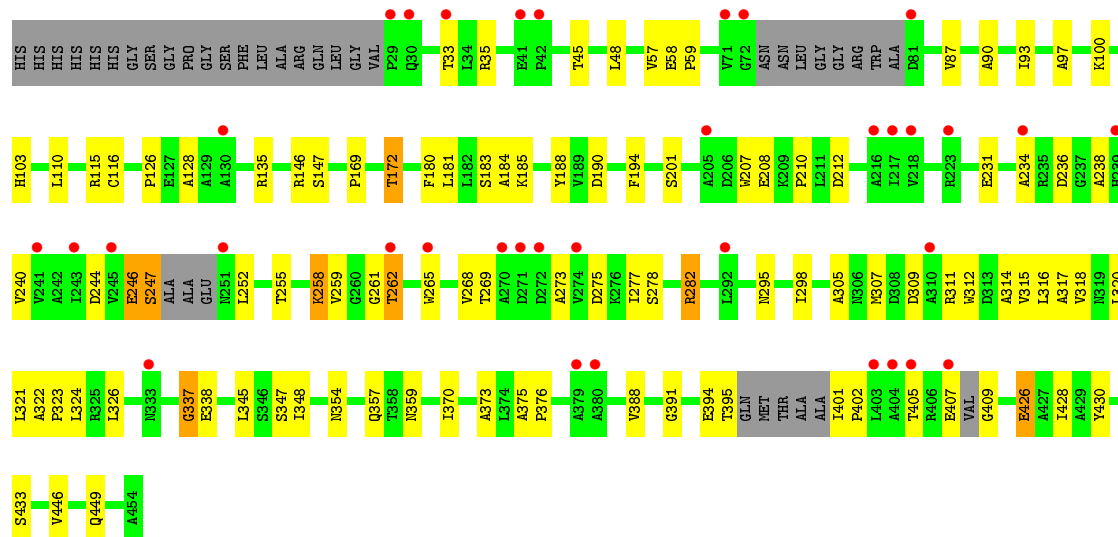


- Molecule 1: 3-oxoacyl-(Acyl-carrier-protein) reductase





• Molecule 1: 3-oxoacyl-(Acyl-carrier-protein) reductase



4 Data and refinement statistics

Property	Value	Source
Space group	P 1	Depositor
Cell constants a, b, c, α , β , γ	63.07Å 71.03Å 92.92Å 105.02° 97.06° 93.66°	Depositor
Resolution (Å)	19.78 – 2.59 19.78 – 2.59	Depositor EDS
% Data completeness (in resolution range)	95.5 (19.78-2.59) 87.7 (19.78-2.59)	Depositor EDS
R_{merge}	(Not available)	Depositor
R_{sym}	0.15	Depositor
$\langle I/\sigma(I) \rangle$ ¹	1.79 (at 2.59Å)	Xtriage
Refinement program	REFMAC 5.5.0102	Depositor
R, R_{free}	0.168 , 0.242 0.194 , 0.255	Depositor DCC
R_{free} test set	2320 reflections (5.34%)	DCC
Wilson B-factor (Å ²)	40.3	Xtriage
Anisotropy	0.129	Xtriage
Bulk solvent k_{sol} (e/Å ³), B_{sol} (Å ²)	0.31 , 41.2	EDS
Estimated twinning fraction	No twinning to report.	Xtriage
L-test for twinning ²	$\langle L \rangle = 0.48$, $\langle L^2 \rangle = 0.30$	Xtriage
Outliers	0 of 45758 reflections	Xtriage
F_o, F_c correlation	0.94	EDS
Total number of atoms	12462	wwPDB-VP
Average B, all atoms (Å ²)	42.0	wwPDB-VP

Xtriage's analysis on translational NCS is as follows: *The largest off-origin peak in the Patterson function is 4.81% of the height of the origin peak. No significant pseudotranslation is detected.*

¹Intensities estimated from amplitudes.

²Theoretical values of $\langle |L| \rangle$, $\langle L^2 \rangle$ for acentric reflections are 0.5, 0.375 respectively for untwinned datasets, and 0.333, 0.2 for perfectly twinned datasets.

5 Model quality [i](#)

5.1 Standard geometry [i](#)

Bond lengths and bond angles in the following residue types are not validated in this section: NAD, ZPG

The Z score for a bond length (or angle) is the number of standard deviations the observed value is removed from the expected value. A bond length (or angle) with $|Z| > 5$ is considered an outlier worth inspection. RMSZ is the root-mean-square of all Z scores of the bond lengths (or angles).

Mol	Chain	Bond lengths		Bond angles	
		RMSZ	$\# Z > 5$	RMSZ	$\# Z > 5$
1	A	0.70	0/3125	0.83	1/4248 (0.0%)
1	B	0.70	0/3102	0.77	1/4212 (0.0%)
1	C	0.65	0/3036	0.76	0/4132
1	D	0.61	0/2968	0.73	0/4032
All	All	0.67	0/12231	0.77	2/16624 (0.0%)

There are no bond length outliers.

All (2) bond angle outliers are listed below:

Mol	Chain	Res	Type	Atoms	Z	Observed(°)	Ideal(°)
1	A	345	LEU	CA-CB-CG	-6.02	101.45	115.30
1	B	345	LEU	CA-CB-CG	5.00	126.80	115.30

There are no chirality outliers.

There are no planarity outliers.

5.2 Too-close contacts [i](#)

In the following table, the Non-H and H(model) columns list the number of non-hydrogen atoms and hydrogen atoms in the chain respectively. The H(added) column lists the number of hydrogen atoms added and optimized by MolProbity. The Clashes column lists the number of clashes within the asymmetric unit, whereas Symm-Clashes lists symmetry related clashes.

Mol	Chain	Non-H	H(model)	H(added)	Clashes	Symm-Clashes
1	A	3080	0	3100	63	0
1	B	3059	0	3073	55	0
1	C	2991	0	2963	51	0
1	D	2927	0	2916	56	0
2	A	44	0	26	4	0

Continued on next page...

Continued from previous page...

Mol	Chain	Non-H	H(model)	H(added)	Clashes	Symm-Clashes
2	B	44	0	26	3	0
2	C	44	0	26	1	0
2	D	44	0	26	1	0
3	A	13	0	19	0	0
4	A	78	0	0	1	0
4	B	69	0	0	4	0
4	C	39	0	0	1	0
4	D	30	0	0	0	0
All	All	12462	0	12175	212	0

The all-atom clashscore is defined as the number of clashes found per 1000 atoms (including hydrogen atoms). The all-atom clashscore for this structure is 9.

All (212) close contacts within the same asymmetric unit are listed below, sorted by their clash magnitude.

Atom-1	Atom-2	Interatomic distance (Å)	Clash overlap (Å)
1:A:38:ARG:HH11	1:A:38:ARG:HG2	0.96	1.10
1:D:337:GLY:HA2	1:D:338:GLU:HB2	1.51	0.92
1:A:38:ARG:CG	1:A:38:ARG:HH11	1.82	0.92
1:B:299:THR:O	1:B:300:ARG:HB2	1.72	0.89
1:C:173:GLY:HA2	1:C:201:SER:OG	1.72	0.89
1:A:38:ARG:NH1	1:A:38:ARG:HG2	1.75	0.88
1:D:407:GLU:O	1:D:409:GLY:N	2.07	0.88
1:A:315:VAL:O	1:A:319:ASN:HB2	1.79	0.82
1:B:395:THR:HG21	2:B:3:NAD:H72N	1.46	0.81
1:B:298:ILE:HG12	1:B:300:ARG:HH12	1.47	0.79
1:D:337:GLY:CA	1:D:338:GLU:HB2	2.13	0.78
1:A:396:GLN:O	1:A:397:MET:HB3	1.86	0.76
1:A:343:ILE:HD12	1:A:343:ILE:N	2.05	0.71
1:A:249:ALA:O	1:A:250:GLU:HB2	1.91	0.71
1:B:82:SER:HA	1:B:112:ASN:ND2	2.06	0.70
1:B:82:SER:HA	1:B:112:ASN:HD21	1.55	0.70
1:C:311:ARG:NE	4:C:476:HOH:O	2.25	0.70
1:B:298:ILE:CG1	1:B:300:ARG:HH12	2.05	0.69
1:C:129:ALA:HB1	1:C:134:GLU:HB3	1.75	0.68
1:B:308:ASP:OD1	1:B:311:ARG:HD2	1.94	0.67
1:C:316:LEU:HD13	1:C:363:THR:HG22	1.77	0.66
1:D:255:THR:O	1:D:259:VAL:HG22	1.95	0.66
1:C:49:LEU:HD13	1:C:71:VAL:CG2	2.26	0.66
1:D:246:GLU:O	1:D:247:SER:C	2.32	0.66
1:B:322:ALA:HB3	1:B:323:PRO:HD3	1.77	0.65

Continued on next page...

Continued from previous page...

Atom-1	Atom-2	Interatomic distance (Å)	Clash overlap (Å)
1:D:322:ALA:O	1:D:326:LEU:HG	1.97	0.65
1:A:426:GLU:OE1	1:A:426:GLU:HA	1.98	0.64
1:D:278:SER:HB3	1:D:282:ARG:HH21	1.63	0.64
1:A:401:ILE:O	1:A:406:ARG:NH1	2.31	0.63
1:C:41:GLU:HB2	1:C:42:PRO:HD2	1.80	0.63
1:A:268:VAL:HG22	2:A:1:NAD:N1A	2.13	0.63
1:A:223:ARG:HD2	4:A:500:HOH:O	1.98	0.62
1:A:295:ASN:HA	1:A:345:LEU:HD13	1.80	0.62
1:B:323:PRO:O	1:B:327:THR:HG22	1.99	0.62
1:D:259:VAL:HG23	1:D:261:GLY:H	1.64	0.61
1:B:219:THR:O	1:B:295:ASN:HB3	2.00	0.61
1:A:396:GLN:O	1:A:396:GLN:HG3	2.00	0.61
1:B:323:PRO:O	1:B:327:THR:CG2	2.50	0.60
1:A:25:GLN:HB3	1:B:22:LEU:HD11	1.83	0.60
1:B:344:GLY:HA3	4:B:520:HOH:O	2.01	0.58
1:B:60:LEU:HD11	1:B:178:MET:HG3	1.85	0.57
1:A:414:SER:HB2	1:A:449:GLN:HB3	1.85	0.57
1:A:322:ALA:HB3	1:A:323:PRO:HD3	1.86	0.57
1:C:132:THR:O	1:C:136:ILE:HG13	2.04	0.57
1:D:337:GLY:HA2	1:D:338:GLU:CB	2.32	0.57
1:B:298:ILE:CG1	1:B:300:ARG:NH1	2.67	0.57
1:C:103:HIS:HE1	1:D:307:MET:O	1.88	0.57
1:A:415:LEU:HD12	1:A:448:GLY:HA2	1.87	0.56
1:B:298:ILE:HG13	1:B:300:ARG:NH1	2.19	0.56
1:A:32:GLU:OE2	1:A:115:ARG:HG2	2.06	0.56
1:A:100:LYS:O	1:A:103:HIS:HB3	2.06	0.56
1:C:230:ALA:HB1	1:C:259:VAL:HG11	1.88	0.56
1:D:354:ASN:HB3	1:D:357:GLN:HG3	1.87	0.55
1:A:38:ARG:CG	1:A:38:ARG:NH1	2.52	0.55
1:B:299:THR:O	1:B:300:ARG:CB	2.48	0.55
1:D:185:LYS:HB3	1:D:426:GLU:HG2	1.88	0.55
1:C:126:PRO:O	1:C:135:ARG:HG3	2.07	0.55
1:A:373:ALA:CB	1:B:135:ARG:HD3	2.37	0.54
1:C:413:ASN:HB3	1:C:450:ALA:HA	1.89	0.54
1:D:172:THR:HB	1:D:201:SER:H	1.73	0.54
1:B:413:ASN:HB3	1:B:450:ALA:HA	1.89	0.54
1:C:49:LEU:CD1	1:C:71:VAL:HG22	2.37	0.54
1:A:86:LEU:O	1:A:119:VAL:HA	2.07	0.54
1:C:49:LEU:HD13	1:C:71:VAL:HG22	1.89	0.54
1:C:189:VAL:HG22	1:C:446:VAL:HG22	1.90	0.54
1:B:314:ALA:O	1:B:318:VAL:HG23	2.08	0.53

Continued on next page...

Continued from previous page...

Atom-1	Atom-2	Interatomic distance (Å)	Clash overlap (Å)
1:D:273:ALA:O	1:D:277:ILE:HG13	2.08	0.53
1:D:181:LEU:HD21	1:D:194:PHE:CZ	2.44	0.53
1:A:26:LEU:HD23	1:B:22:LEU:HD13	1.91	0.53
1:D:295:ASN:HA	1:D:345:LEU:HD13	1.90	0.52
1:B:107:THR:HB	1:B:108:PRO:HD3	1.91	0.52
1:D:48:LEU:HD11	1:D:87:VAL:HG23	1.91	0.52
1:C:135:ARG:HD3	1:D:373:ALA:CB	2.40	0.52
1:D:348:ILE:HD12	1:D:391:GLY:HA2	1.90	0.52
1:B:226:GLY:HA2	1:B:229:ILE:HD12	1.90	0.52
1:B:311:ARG:O	1:B:315:VAL:HG23	2.10	0.52
1:A:115:ARG:NH2	1:A:154:ARG:HD2	2.24	0.52
1:C:149:GLY:HA2	1:C:158:THR:HG23	1.91	0.51
1:A:373:ALA:HB2	1:B:135:ARG:HD3	1.92	0.51
1:D:317:ALA:HA	1:D:321:LEU:HB2	1.91	0.51
1:D:188:TYR:HD2	1:D:446:VAL:HG12	1.76	0.51
1:A:234:ALA:HB2	1:A:259:VAL:HB	1.92	0.51
1:A:295:ASN:HB2	1:A:345:LEU:HD13	1.91	0.51
1:C:315:VAL:HG12	1:C:363:THR:HG21	1.91	0.51
1:B:56:VAL:O	1:B:60:LEU:HB2	2.11	0.51
1:C:47:SER:HA	1:C:69:ASP:HB3	1.91	0.51
2:B:3:NAD:N7N	2:B:3:NAD:O1N	2.43	0.50
1:B:273:ALA:O	1:B:277:ILE:HG13	2.11	0.50
1:C:346:SER:O	1:C:347:SER:O	2.29	0.50
1:A:26:LEU:O	1:A:28:VAL:N	2.45	0.50
1:D:269:THR:HG21	1:D:317:ALA:HB1	1.94	0.50
1:D:115:ARG:HB3	1:D:115:ARG:NH1	2.26	0.50
1:A:102:LEU:HD13	1:A:144:PHE:CG	2.46	0.50
1:B:181:LEU:HD21	1:B:194:PHE:CZ	2.47	0.50
1:D:231:GLU:OE2	1:D:258:LYS:HD3	2.11	0.50
1:D:190:ASP:HB3	1:D:449:GLN:N	2.27	0.50
1:C:304:LEU:HD23	1:D:110:LEU:HD11	1.92	0.50
1:A:268:VAL:HG22	2:A:1:NAD:C6A	2.41	0.50
1:B:274:VAL:HG21	1:B:329:GLY:HA3	1.94	0.50
1:A:244:ASP:HB2	1:A:252:LEU:HD13	1.94	0.50
1:D:298:ILE:HD11	1:D:314:ALA:O	2.11	0.50
1:A:30:GLN:NE2	1:A:31:PRO:HD2	2.27	0.50
1:D:246:GLU:O	1:D:247:SER:O	2.30	0.49
1:C:107:THR:HB	1:C:108:PRO:HD3	1.93	0.49
1:D:347:SER:HB3	2:D:4:NAD:H6N	1.94	0.49
1:D:180:PHE:O	1:D:183:SER:OG	2.27	0.49
1:A:342:VAL:O	1:A:385:ILE:HA	2.13	0.49

Continued on next page...

Continued from previous page...

Atom-1	Atom-2	Interatomic distance (Å)	Clash overlap (Å)
1:D:35:ARG:NH1	1:D:184:ALA:HB2	2.28	0.49
1:D:126:PRO:C	1:D:128:ALA:H	2.16	0.48
1:A:451:MET:O	1:B:452:ILE:HA	2.14	0.48
1:B:55:ARG:CZ	1:B:165:PRO:HA	2.44	0.48
1:B:58:GLU:HB2	4:B:505:HOH:O	2.14	0.47
1:C:225:ILE:HG22	1:C:229:ILE:HD11	1.96	0.47
1:A:86:LEU:HB2	1:A:119:VAL:HG22	1.95	0.47
1:A:319:ASN:HB3	1:A:363:THR:CB	2.45	0.47
1:A:319:ASN:HB3	1:A:363:THR:HB	1.96	0.47
1:D:402:PRO:O	1:D:405:THR:HB	2.14	0.47
1:A:145:THR:HG21	1:A:160:LEU:HB2	1.97	0.47
1:D:115:ARG:CZ	1:D:115:ARG:HB3	2.46	0.46
1:D:244:ASP:HB2	1:D:252:LEU:HD13	1.97	0.46
1:A:181:LEU:HD21	1:A:194:PHE:CZ	2.50	0.46
1:D:311:ARG:O	1:D:315:VAL:HG23	2.15	0.46
1:D:259:VAL:HG23	1:D:261:GLY:N	2.31	0.46
1:A:413:ASN:HB3	1:A:450:ALA:HA	1.97	0.46
1:C:299:THR:HG22	1:C:360:TYR:CD1	2.50	0.46
1:C:401:ILE:H	1:C:401:ILE:HD13	1.81	0.46
1:A:295:ASN:CB	1:A:345:LEU:HD13	2.45	0.46
1:A:342:VAL:HG12	1:A:385:ILE:HG13	1.96	0.46
1:D:146:ARG:HG2	1:D:146:ARG:HH11	1.81	0.46
1:C:408:VAL:O	1:C:412:LEU:HB2	2.15	0.46
1:C:119:VAL:O	1:C:158:THR:HA	2.16	0.45
1:B:210:PRO:HD2	1:B:236:ASP:HB3	1.97	0.45
1:C:35:ARG:NH2	1:C:42:PRO:O	2.50	0.45
1:C:422:VAL:O	1:C:426:GLU:HG2	2.16	0.45
1:A:123:GLY:O	1:A:162:TYR:HA	2.16	0.45
1:B:291:ILE:HA	1:B:341:ARG:O	2.16	0.45
1:B:298:ILE:HD12	1:B:298:ILE:HA	1.89	0.45
1:B:258:LYS:HE2	4:B:500:HOH:O	2.16	0.45
1:D:210:PRO:HD2	1:D:236:ASP:HB3	1.99	0.45
1:A:229:ILE:HD13	1:A:293:VAL:HG11	1.99	0.45
1:C:54:GLY:HA3	1:C:91:THR:OG1	2.17	0.44
1:C:410:ARG:HG3	1:C:418:GLY:H	1.82	0.44
1:A:415:LEU:HD12	1:A:448:GLY:CA	2.46	0.44
1:C:373:ALA:HB2	1:D:135:ARG:HG2	1.99	0.44
1:A:407:GLU:OE2	1:A:411:ARG:HD3	2.16	0.44
1:A:175:GLU:HG2	1:A:179:ARG:HD2	1.99	0.44
1:B:253:ALA:O	1:B:257:SER:HB2	2.17	0.44
1:C:405:THR:O	1:C:405:THR:OG1	2.34	0.44

Continued on next page...

Continued from previous page...

Atom-1	Atom-2	Interatomic distance (Å)	Clash overlap (Å)
1:C:220:GLY:HA2	1:C:244:ASP:OD1	2.18	0.44
1:C:361:ALA:CB	1:D:147:SER:OG	2.66	0.44
1:C:95:GLU:N	1:C:95:GLU:OE1	2.50	0.43
1:C:346:SER:HA	1:C:364:LYS:HE3	2.00	0.43
1:C:106:PHE:O	1:C:107:THR:C	2.56	0.43
1:C:120:VAL:HG22	1:C:159:ALA:HB3	1.99	0.43
1:A:244:ASP:OD2	2:A:1:NAD:H1B	2.17	0.43
1:A:390:PRO:HB2	2:A:1:NAD:C5N	2.49	0.43
1:A:288:LYS:NZ	1:A:334:GLY:O	2.51	0.43
1:D:388:VAL:HG21	1:D:428:ILE:HG13	1.98	0.43
1:B:37:TYR:CE2	1:B:235:ARG:HD2	2.54	0.43
1:B:208:GLU:C	1:B:210:PRO:HD3	2.38	0.43
1:D:318:VAL:O	1:D:323:PRO:HD3	2.18	0.43
1:A:386:ASN:OD1	1:A:442:ASN:HB2	2.19	0.43
1:C:55:ARG:O	1:C:59:PRO:HG2	2.17	0.43
1:B:57:VAL:O	1:B:61:ARG:HG3	2.17	0.43
1:D:312:TRP:CE3	1:D:359:ASN:HB3	2.54	0.43
1:C:354:ASN:O	1:D:147:SER:HB3	2.19	0.43
1:A:314:ALA:O	1:A:318:VAL:HG23	2.18	0.43
1:D:320:LEU:C	1:D:323:PRO:HD2	2.40	0.43
1:B:452:ILE:HD13	1:B:452:ILE:HG21	1.78	0.42
1:A:317:ALA:HA	1:A:321:LEU:HB2	2.02	0.42
1:C:307:MET:O	1:D:103:HIS:HE1	2.02	0.42
1:A:273:ALA:O	1:A:277:ILE:HG13	2.20	0.42
1:B:223:ARG:HD3	2:B:3:NAD:O2A	2.19	0.42
1:D:234:ALA:HA	1:D:238:ALA:O	2.19	0.42
1:D:57:VAL:HG13	1:D:58:GLU:HG2	2.00	0.42
1:D:59:PRO:HG3	1:D:169:PRO:O	2.19	0.42
1:B:97:ALA:O	1:B:100:LYS:HG2	2.19	0.42
1:B:357:GLN:HB3	1:B:360:TYR:HB3	2.02	0.42
1:B:26:LEU:HD23	1:B:26:LEU:HA	1.91	0.42
1:D:207:TRP:O	1:D:210:PRO:HG3	2.20	0.41
1:C:268:VAL:HG22	2:C:2:NAD:N1A	2.34	0.41
1:A:295:ASN:CA	1:A:345:LEU:HD13	2.48	0.41
1:C:357:GLN:HB3	1:C:360:TYR:HB3	2.02	0.41
1:D:90:ALA:HB1	1:D:93:ILE:HD12	2.01	0.41
1:C:78:ARG:O	1:C:79:TRP:CB	2.67	0.41
1:A:26:LEU:CD2	1:B:22:LEU:HD13	2.50	0.41
1:C:126:PRO:HD3	1:C:162:TYR:CE1	2.55	0.41
1:B:142:GLU:OE2	1:B:146:ARG:NE	2.40	0.41
1:A:26:LEU:HD23	1:B:22:LEU:CD1	2.50	0.41

Continued on next page...

Continued from previous page...

Atom-1	Atom-2	Interatomic distance (Å)	Clash overlap (Å)
1:C:317:ALA:HA	1:C:321:LEU:HB2	2.02	0.41
1:A:37:TYR:CD1	1:A:185:LYS:HE2	2.54	0.41
1:C:37:TYR:CD1	1:C:185:LYS:HE3	2.56	0.41
1:D:268:VAL:HB	1:D:326:LEU:HD11	2.02	0.41
1:C:95:GLU:HB2	1:C:96:PRO:HD2	2.02	0.41
1:B:394:GLU:H	1:B:394:GLU:HG2	1.66	0.41
1:C:343:ILE:HA	1:C:386:ASN:O	2.20	0.41
1:B:106:PHE:CE1	1:B:119:VAL:HG13	2.56	0.41
1:A:249:ALA:HB2	1:A:265:TRP:CD1	2.56	0.41
1:B:229:ILE:HA	1:B:425:ALA:HB1	2.03	0.41
1:D:324:LEU:HD13	1:D:370:ILE:HG12	2.01	0.41
1:B:217:ILE:HD11	1:B:281:LEU:HD11	2.03	0.41
1:D:240:VAL:O	1:D:262:THR:N	2.52	0.41
1:A:58:GLU:HB3	1:A:59:PRO:HD3	2.02	0.41
1:A:348:ILE:HD12	1:A:391:GLY:HA2	2.03	0.41
1:B:317:ALA:HA	1:B:321:LEU:HB2	2.02	0.41
1:C:388:VAL:HG21	1:C:428:ILE:CG1	2.52	0.40
1:A:71:VAL:HA	1:A:72:GLY:HA2	1.75	0.40
1:D:375:ALA:N	1:D:376:PRO:HD2	2.37	0.40
1:B:81:ASP:CB	4:B:514:HOH:O	2.68	0.40
1:B:126:PRO:O	1:B:135:ARG:HG3	2.21	0.40
1:A:35:ARG:CZ	1:A:45:THR:HG23	2.51	0.40
1:C:127:GLU:OE1	1:C:127:GLU:N	2.45	0.40

There are no symmetry-related clashes.

5.3 Torsion angles [i](#)

5.3.1 Protein backbone [i](#)

In the following table, the Percentiles column shows the percent Ramachandran outliers of the chain as a percentile score with respect to all X-ray entries followed by that with respect to entries of similar resolution.

The Analysed column shows the number of residues for which the backbone conformation was analysed, and the total number of residues.

Mol	Chain	Analysed	Favoured	Allowed	Outliers	Percentiles	
1	A	423/446 (95%)	398 (94%)	22 (5%)	3 (1%)	26	51
1	B	417/446 (94%)	393 (94%)	21 (5%)	3 (1%)	26	51

Continued on next page...

Continued from previous page...

Mol	Chain	Analysed	Favoured	Allowed	Outliers	Percentiles	
1	C	412/446 (92%)	384 (93%)	22 (5%)	6 (2%)	13	26
1	D	399/446 (90%)	364 (91%)	30 (8%)	5 (1%)	15	30
All	All	1651/1784 (92%)	1539 (93%)	95 (6%)	17 (1%)	19	39

All (17) Ramachandran outliers are listed below:

Mol	Chain	Res	Type
1	A	250	GLU
1	B	300	ARG
1	C	347	SER
1	A	397	MET
1	C	39	ALA
1	C	40	GLY
1	C	45	THR
1	D	337	GLY
1	B	346	SER
1	B	347	SER
1	D	116	CYS
1	C	79	TRP
1	D	97	ALA
1	D	100	LYS
1	D	305	ALA
1	A	27	GLY
1	C	72	GLY

5.3.2 Protein sidechains ⓘ

In the following table, the Percentiles column shows the percent sidechain outliers of the chain as a percentile score with respect to all X-ray entries followed by that with respect to entries of similar resolution.

The Analysed column shows the number of residues for which the sidechain conformation was analysed, and the total number of residues.

Mol	Chain	Analysed	Rotameric	Outliers	Percentiles	
1	A	306/323 (95%)	287 (94%)	19 (6%)	23	45
1	B	303/323 (94%)	289 (95%)	14 (5%)	33	61
1	C	292/323 (90%)	279 (96%)	13 (4%)	34	62
1	D	287/323 (89%)	267 (93%)	20 (7%)	19	37

Continued on next page...

Continued from previous page...

Mol	Chain	Analysed	Rotameric	Outliers	Percentiles
All	All	1188/1292 (92%)	1122 (94%)	66 (6%)	26 50

All (66) residues with a non-rotameric sidechain are listed below:

Mol	Chain	Res	Type
1	A	24	ARG
1	A	25	GLN
1	A	26	LEU
1	A	28	VAL
1	A	38	ARG
1	A	41	GLU
1	A	45	THR
1	A	71	VAL
1	A	95	GLU
1	A	127	GLU
1	A	244	ASP
1	A	247	SER
1	A	251	ASN
1	A	302	LYS
1	A	343	ILE
1	A	345	LEU
1	A	397	MET
1	A	411	ARG
1	A	430	TYR
1	B	20	SER
1	B	30	GLN
1	B	58	GLU
1	B	244	ASP
1	B	262	THR
1	B	266	LEU
1	B	271	ASP
1	B	276	LYS
1	B	288	LYS
1	B	300	ARG
1	B	327	THR
1	B	348	ILE
1	B	403	LEU
1	B	430	TYR
1	C	69	ASP
1	C	71	VAL
1	C	74	ASN
1	C	195	SER

Continued on next page...

Continued from previous page...

Mol	Chain	Res	Type
1	C	201	SER
1	C	223	ARG
1	C	258	LYS
1	C	321	LEU
1	C	401	ILE
1	C	405	THR
1	C	407	GLU
1	C	408	VAL
1	C	430	TYR
1	D	33	THR
1	D	45	THR
1	D	172	THR
1	D	208	GLU
1	D	212	ASP
1	D	246	GLU
1	D	247	SER
1	D	258	LYS
1	D	262	THR
1	D	265	TRP
1	D	275	ASP
1	D	282	ARG
1	D	309	ASP
1	D	316	LEU
1	D	394	GLU
1	D	395	THR
1	D	401	ILE
1	D	426	GLU
1	D	430	TYR
1	D	433	SER

Some sidechains can be flipped to improve hydrogen bonding and reduce clashes. All (16) such sidechains are listed below:

Mol	Chain	Res	Type
1	A	30	GLN
1	A	103	HIS
1	A	192	GLN
1	A	251	ASN
1	A	294	ASN
1	B	30	GLN
1	B	112	ASN
1	B	239	HIS
1	B	284	HIS

Continued on next page...

Continued from previous page...

Mol	Chain	Res	Type
1	C	103	HIS
1	C	192	GLN
1	C	251	ASN
1	C	284	HIS
1	C	420	GLN
1	D	294	ASN
1	D	357	GLN

5.3.3 RNA ⓘ

There are no RNA molecules in this entry.

5.4 Non-standard residues in protein, DNA, RNA chains ⓘ

There are no non-standard protein/DNA/RNA residues in this entry.

5.5 Carbohydrates ⓘ

There are no carbohydrates in this entry.

5.6 Ligand geometry ⓘ

5 ligands are modelled in this entry.

In the following table, the Counts columns list the number of bonds (or angles) for which Mogul statistics could be retrieved, the number of bonds (or angles) that are observed in the model and the number of bonds (or angles) that are defined in the chemical component dictionary. The Link column lists molecule types, if any, to which the group is linked. The Z score for a bond length (or angle) is the number of standard deviations the observed value is removed from the expected value. A bond length (or angle) with $|Z| > 2$ is considered an outlier worth inspection. RMSZ is the root-mean-square of all Z scores of the bond lengths (or angles).

Mol	Type	Chain	Res	Link	Bond lengths			Bond angles		
					Counts	RMSZ	$\# Z > 2$	Counts	RMSZ	$\# Z > 2$
2	NAD	A	1	-	38,48,48	1.72	5 (13%)	47,73,73	2.58	9 (19%)
3	ZPG	A	455	-	12,12,28	0.85	1 (8%)	11,14,34	1.11	1 (9%)
2	NAD	B	3	-	38,48,48	1.75	3 (7%)	47,73,73	2.26	6 (12%)
2	NAD	C	2	-	38,48,48	1.75	3 (7%)	47,73,73	2.27	5 (10%)
2	NAD	D	4	-	38,48,48	1.74	3 (7%)	47,73,73	1.99	4 (8%)

In the following table, the Chirals column lists the number of chiral outliers, the number of chiral centers analysed, the number of these observed in the model and the number defined in the chemical component dictionary. Similar counts are reported in the Torsion and Rings columns. '-' means no outliers of that kind were identified.

Mol	Type	Chain	Res	Link	Chirals	Torsions	Rings
2	NAD	A	1	-	-	0/22/62/62	0/5/5/5
3	ZPG	A	455	-	-	0/12/12/31	0/0/0/0
2	NAD	B	3	-	-	0/22/62/62	0/5/5/5
2	NAD	C	2	-	-	0/22/62/62	0/5/5/5
2	NAD	D	4	-	-	0/22/62/62	0/5/5/5

All (15) bond length outliers are listed below:

Mol	Chain	Res	Type	Atoms	Z	Observed(Å)	Ideal(Å)
2	A	1	NAD	O4D-C4D	-2.21	1.39	1.45
2	A	1	NAD	C2N-C3N	2.09	1.42	1.39
3	A	455	ZPG	C18-C20	2.22	1.54	1.51
2	C	2	NAD	C2A-N1A	2.34	1.38	1.33
2	A	1	NAD	C2A-N1A	2.35	1.38	1.33
2	B	3	NAD	C2A-N1A	2.49	1.38	1.33
2	D	4	NAD	C2A-N1A	2.52	1.38	1.33
2	A	1	NAD	C2A-N3A	2.89	1.37	1.32
2	B	3	NAD	C2A-N3A	3.62	1.38	1.32
2	C	2	NAD	C2A-N3A	3.62	1.38	1.32
2	D	4	NAD	C2A-N3A	3.74	1.38	1.32
2	A	1	NAD	O7N-C7N	8.25	1.41	1.24
2	D	4	NAD	O7N-C7N	8.47	1.42	1.24
2	C	2	NAD	O7N-C7N	8.65	1.42	1.24
2	B	3	NAD	O7N-C7N	8.83	1.43	1.24

All (25) bond angle outliers are listed below:

Mol	Chain	Res	Type	Atoms	Z	Observed(°)	Ideal(°)
2	A	1	NAD	N3A-C2A-N1A	-14.52	117.78	128.89
2	B	3	NAD	N3A-C2A-N1A	-12.82	119.08	128.89
2	C	2	NAD	N3A-C2A-N1A	-12.53	119.30	128.89
2	D	4	NAD	N3A-C2A-N1A	-10.70	120.70	128.89
2	C	2	NAD	C1B-N9A-C4A	-3.73	121.32	126.94
2	A	1	NAD	PN-O3-PA	-3.59	122.64	132.73
2	A	1	NAD	C1B-N9A-C4A	-3.47	121.71	126.94
2	B	3	NAD	C1B-N9A-C4A	-2.75	122.80	126.94
2	A	1	NAD	C2B-C1B-N9A	-2.65	110.24	114.29
2	A	1	NAD	O7N-C7N-N7N	-2.18	119.52	122.59

Continued on next page...

Continued from previous page...

Mol	Chain	Res	Type	Atoms	Z	Observed(°)	Ideal(°)
2	C	2	NAD	PN-O3-PA	-2.07	126.93	132.73
2	B	3	NAD	C4A-C5A-N7A	-2.03	107.61	109.48
2	A	1	NAD	C4D-O4D-C1D	2.05	111.97	109.72
3	A	455	ZPG	C21-O20-C20	2.06	118.27	115.13
2	A	1	NAD	O7N-C7N-C3N	2.08	121.86	119.59
2	A	1	NAD	C2A-N1A-C6A	2.23	122.74	118.77
2	B	3	NAD	C4D-O4D-C1D	2.36	112.31	109.72
2	D	4	NAD	C4B-O4B-C1B	2.42	112.38	109.72
2	C	2	NAD	O2A-PA-O3	2.61	116.95	105.09
2	D	4	NAD	C4D-O4D-C1D	2.86	112.87	109.72
2	B	3	NAD	O3-PA-O5B	3.02	110.96	102.94
2	A	1	NAD	O4B-C1B-N9A	4.12	116.73	108.10
2	C	2	NAD	O4D-C1D-N1N	4.54	113.12	108.13
2	D	4	NAD	O4D-C1D-N1N	4.55	113.13	108.13
2	B	3	NAD	O4D-C1D-N1N	4.91	113.53	108.13

There are no chirality outliers.

There are no torsion outliers.

There are no ring outliers.

4 monomers are involved in 9 short contacts:

Mol	Chain	Res	Type	Clashes	Symm-Clashes
2	A	1	NAD	4	0
2	B	3	NAD	3	0
2	C	2	NAD	1	0
2	D	4	NAD	1	0

5.7 Other polymers [i](#)

There are no such residues in this entry.

5.8 Polymer linkage issues [i](#)

There are no chain breaks in this entry.

6 Fit of model and data ⓘ

6.1 Protein, DNA and RNA chains ⓘ

In the following table, the column labelled ‘#RSRZ> 2’ contains the number (and percentage) of RSRZ outliers, followed by percent RSRZ outliers for the chain as percentile scores relative to all X-ray entries and entries of similar resolution. The OWAB column contains the minimum, median, 95th percentile and maximum values of the occupancy-weighted average B-factor per residue. The column labelled ‘Q< 0.9’ lists the number of (and percentage) of residues with an average occupancy less than 0.9.

Mol	Chain	Analysed	<RSRZ>	#RSRZ>2	OWAB(Å ²)	Q<0.9
1	A	427/446 (95%)	-0.11	6 (1%) 78 74	17, 33, 54, 67	0
1	B	425/446 (95%)	0.04	11 (2%) 59 53	14, 36, 71, 83	0
1	C	418/446 (93%)	0.04	18 (4%) 39 31	19, 40, 66, 78	0
1	D	409/446 (91%)	0.47	35 (8%) 13 8	27, 52, 88, 103	0
All	All	1679/1784 (94%)	0.11	70 (4%) 40 32	14, 40, 75, 103	0

All (70) RSRZ outliers are listed below:

Mol	Chain	Res	Type	RSRZ
1	C	400	ALA	6.2
1	D	72	GLY	5.5
1	D	239	HIS	4.4
1	D	81	ASP	4.3
1	D	272	ASP	4.3
1	D	217	ILE	4.1
1	D	71	VAL	4.0
1	C	405	THR	3.9
1	D	243	ILE	3.7
1	D	241	VAL	3.6
1	B	30	GLN	3.5
1	D	29	PRO	3.5
1	D	404	ALA	3.4
1	C	40	GLY	3.4
1	D	30	GLN	3.4
1	D	379	ALA	3.3
1	B	246	GLU	3.3
1	C	404	ALA	3.2
1	C	130	ALA	3.1
1	D	223	ARG	3.1
1	D	292	LEU	2.9

Continued on next page...

Continued from previous page...

Mol	Chain	Res	Type	RSRZ
1	C	29	PRO	2.9
1	B	81	ASP	2.8
1	C	39	ALA	2.8
1	B	223	ARG	2.8
1	B	265	TRP	2.7
1	D	262	THR	2.7
1	D	245	VAL	2.7
1	D	270	ALA	2.7
1	A	40	GLY	2.7
1	B	218	VAL	2.7
1	D	380	ALA	2.6
1	A	243	ILE	2.6
1	D	310	ALA	2.6
1	D	42	PRO	2.6
1	B	72	GLY	2.6
1	C	286	GLY	2.6
1	B	283	ASP	2.5
1	A	72	GLY	2.5
1	D	218	VAL	2.5
1	C	408	VAL	2.5
1	C	282	ARG	2.5
1	C	401	ILE	2.5
1	D	407	GLU	2.5
1	D	271	ASP	2.4
1	A	41	GLU	2.3
1	D	333	ASN	2.3
1	C	380	ALA	2.3
1	D	405	THR	2.3
1	B	217	ILE	2.2
1	D	205	ALA	2.2
1	B	284	HIS	2.2
1	C	42	PRO	2.2
1	D	251	ASN	2.2
1	B	243	ILE	2.2
1	D	33	THR	2.2
1	D	41	GLU	2.2
1	D	265	TRP	2.2
1	C	153	ARG	2.2
1	A	213	GLY	2.1
1	D	130	ALA	2.1
1	D	403	LEU	2.1
1	C	41	GLU	2.1

Continued on next page...

Continued from previous page...

Mol	Chain	Res	Type	RSRZ
1	D	216	ALA	2.1
1	C	30	GLN	2.1
1	A	396	GLN	2.0
1	C	53	ALA	2.0
1	C	80	ALA	2.0
1	D	234	ALA	2.0
1	D	274	VAL	2.0

6.2 Non-standard residues in protein, DNA, RNA chains [i](#)

There are no non-standard protein/DNA/RNA residues in this entry.

6.3 Carbohydrates [i](#)

There are no carbohydrates in this entry.

6.4 Ligands [i](#)

In the following table, the Atoms column lists the number of modelled atoms in the group and the number defined in the chemical component dictionary. LLDF column lists the quality of electron density of the group with respect to its neighbouring residues in protein, DNA or RNA chains. The B-factors column lists the minimum, median, 95th percentile and maximum values of B factors of atoms in the group. The column labelled 'Q < 0.9' lists the number of atoms with occupancy less than 0.9.

Mol	Type	Chain	Res	Atoms	RSCC	RSR	LLDF	B-factors(Å ²)	Q<0.9
3	ZPG	A	455	13/29	0.86	0.16	1.33	60,63,66,67	0
2	NAD	C	2	44/44	0.95	0.13	-0.10	39,46,53,55	0
2	NAD	B	3	44/44	0.93	0.16	-0.22	55,62,70,71	0
2	NAD	A	1	44/44	0.95	0.13	-0.42	30,36,46,50	0
2	NAD	D	4	44/44	0.93	0.15	-0.77	54,66,71,74	0

6.5 Other polymers [i](#)

There are no such residues in this entry.