



Full wwPDB X-ray Structure Validation Report ⓘ

Jan 31, 2016 – 09:48 PM GMT

PDB ID : 1QPE
Title : STRUCTURAL ANALYSIS OF THE LYMPHOCYTE-SPECIFIC KINASE
LCK IN COMPLEX WITH NON-SELECTIVE AND SRC FAMILY SELEC-
TIVE KINASE INHIBITORS
Authors : Zhu, X.; Morgenstern, K.A.
Deposited on : 1999-05-24
Resolution : 2.00 Å(reported)

This is a Full wwPDB X-ray Structure Validation Report for a publicly released PDB entry.
We welcome your comments at validation@mail.wwpdb.org
A user guide is available at
<http://wwpdb.org/validation/2016/XrayValidationReportHelp>
with specific help available everywhere you see the ⓘ symbol.

The following versions of software and data (see [references ⓘ](#)) were used in the production of this report:

MolProbity : 4.02b-467
Mogul : 1.7 (RC4), CSD as536be (2015)
Xtriage (Phenix) : **NOT EXECUTED**
EDS : **NOT EXECUTED**
Percentile statistics : 20151230.v01 (using entries in the PDB archive December 30th 2015)
Ideal geometry (proteins) : Engh & Huber (2001)
Ideal geometry (DNA, RNA) : Parkinson et al. (1996)
Validation Pipeline (wwPDB-VP) : trunk26865

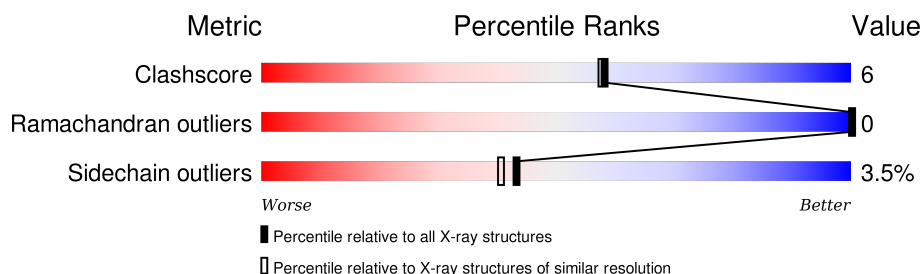
1 Overall quality at a glance

The following experimental techniques were used to determine the structure:

X-RAY DIFFRACTION

The reported resolution of this entry is 2.00 Å.

Percentile scores (ranging between 0-100) for global validation metrics of the entry are shown in the following graphic. The table shows the number of entries on which the scores are based.



Metric	Whole archive (#Entries)	Similar resolution (#Entries, resolution range(Å))
Clashscore	102246	7340 (2.00-2.00)
Ramachandran outliers	100387	7248 (2.00-2.00)
Sidechain outliers	100360	7247 (2.00-2.00)

The table below summarises the geometric issues observed across the polymeric chains and their fit to the electron density. The red, orange, yellow and green segments on the lower bar indicate the fraction of residues that contain outliers for ≥ 3 , 2, 1 and 0 types of geometric quality criteria. A grey segment represents the fraction of residues that are not modelled. The numeric value for each fraction is indicated below the corresponding segment, with a dot representing fractions $\leq 5\%$. The upper red bar (where present) indicates the fraction of residues that have poor fit to the electron density. The numeric value is given above the bar.

Note EDS was not executed.

Mol	Chain	Length	Quality of chain
1	A	279	 82% 13% . .

2 Entry composition [i](#)

There are 4 unique types of molecules in this entry. The entry contains 2410 atoms, of which 3 are hydrogens and 0 are deuteriums.

In the tables below, the ZeroOcc column contains the number of atoms modelled with zero occupancy, the AltConf column contains the number of residues with at least one atom in alternate conformation and the Trace column contains the number of residues modelled with at most 2 atoms.

- Molecule 1 is a protein called LCK KINASE.

Mol	Chain	Residues	Atoms						ZeroOcc	AltConf	Trace
1	A	271	Total	C	N	O	P	S	0	0	0
			2191	1406	365	407	1	12			

There is a discrepancy between the modelled and reference sequences:

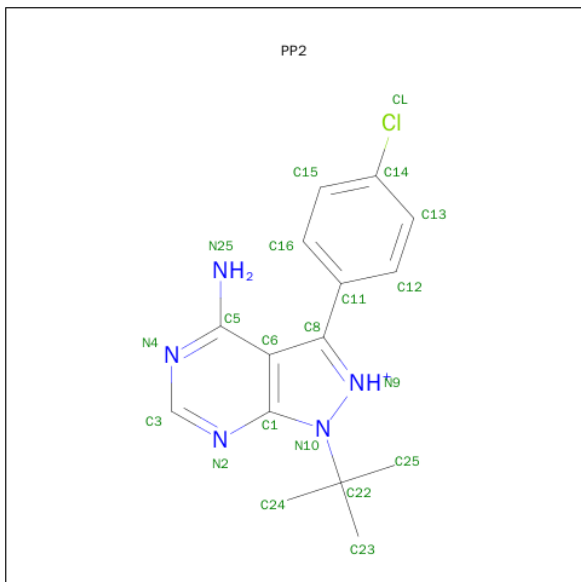
Chain	Residue	Modelled	Actual	Comment	Reference
A	394	PTR	TYR	MODIFIED RESIDUE	UNP P06239

- Molecule 2 is SULFATE ION (three-letter code: SO₄) (formula: O₄S).



Mol	Chain	Residues	Atoms			ZeroOcc	AltConf
2	A	1	Total	O	S	0	0
			5	4	1		
2	A	1	Total	O	S	0	0
			5	4	1		
2	A	1	Total	O	S	0	0
			5	4	1		

- Molecule 3 is 1-TERT-BUTYL-3-(4-CHLORO-PHENYL)-1H-PYRAZOLO[3,4-D]PYRIMIDIN-4-YLAMINE (three-letter code: PP2) (formula: C₁₅H₁₇ClN₅).



Mol	Chain	Residues	Atoms					ZeroOcc	AltConf
3	A	1	Total	C	Cl	H	N	0	0
			24	15	1	3	5		

- Molecule 4 is water.

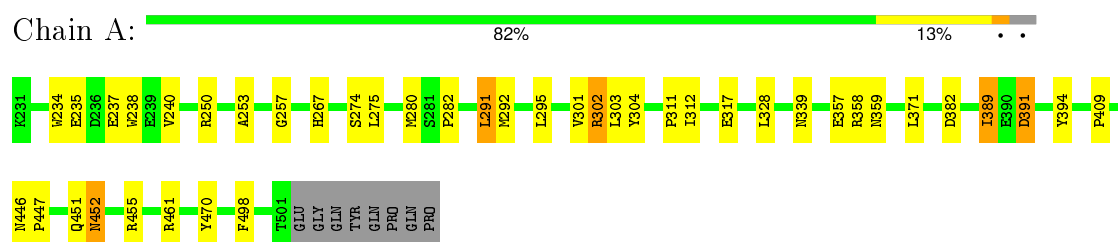
Mol	Chain	Residues	Atoms		ZeroOcc	AltConf
4	A	180	Total	O	0	0
			180	180		

3 Residue-property plots

These plots are drawn for all protein, RNA and DNA chains in the entry. The first graphic for a chain summarises the proportions of errors displayed in the second graphic. The second graphic shows the sequence view annotated by issues in geometry and electron density. Residues are color-coded according to the number of geometric quality criteria for which they contain at least one outlier: green = 0, yellow = 1, orange = 2 and red = 3 or more. A red dot above a residue indicates a poor fit to the electron density ($RSRZ > 2$). Stretches of 2 or more consecutive residues without any outlier are shown as a green connector. Residues present in the sample, but not in the model, are shown in grey.

Note EDS was not executed.

• Molecule 1: LCK KINASE



4 Data and refinement statistics

Xtriage (Phenix) and EDS were not executed - this section will therefore be incomplete.

Property	Value	Source
Space group	P 21 21 21	Depositor
Cell constants a, b, c, α , β , γ	42.50 Å 74.09 Å 91.98 Å 90.00° 90.00° 90.00°	Depositor
Resolution (Å)	5.00 – 2.00	Depositor
% Data completeness (in resolution range)	93.0 (5.00-2.00)	Depositor
R_{merge}	0.08	Depositor
R_{sym}	(Not available)	Depositor
Refinement program	X-PLOR 98.0	Depositor
R, R_{free}	0.189 , 0.254	Depositor
Estimated twinning fraction	No twinning to report.	Xtriage
Total number of atoms	2410	wwPDB-VP
Average B, all atoms (Å ²)	16.0	wwPDB-VP

5 Model quality [i](#)

5.1 Standard geometry [i](#)

Bond lengths and bond angles in the following residue types are not validated in this section: PP2, SO4, PTR

The Z score for a bond length (or angle) is the number of standard deviations the observed value is removed from the expected value. A bond length (or angle) with $|Z| > 5$ is considered an outlier worth inspection. RMSZ is the root-mean-square of all Z scores of the bond lengths (or angles).

Mol	Chain	Bond lengths		Bond angles	
		RMSZ	$\# Z > 5$	RMSZ	$\# Z > 5$
1	A	0.79	0/2227	0.84	1/3022 (0.0%)

There are no bond length outliers.

All (1) bond angle outliers are listed below:

Mol	Chain	Res	Type	Atoms	Z	Observed($^{\circ}$)	Ideal($^{\circ}$)
1	A	291	LEU	CA-CB-CG	5.57	128.10	115.30

There are no chirality outliers.

There are no planarity outliers.

5.2 Too-close contacts [i](#)

In the following table, the Non-H and H(model) columns list the number of non-hydrogen atoms and hydrogen atoms in the chain respectively. The H(added) column lists the number of hydrogen atoms added and optimized by MolProbity. The Clashes column lists the number of clashes within the asymmetric unit, whereas Symm-Clashes lists symmetry related clashes.

Mol	Chain	Non-H	H(model)	H(added)	Clashes	Symm-Clashes
1	A	2191	0	2147	26	0
2	A	15	0	0	1	0
3	A	21	3	17	0	0
4	A	180	0	0	5	0
All	All	2407	3	2164	26	0

The all-atom clashscore is defined as the number of clashes found per 1000 atoms (including hydrogen atoms). The all-atom clashscore for this structure is 6.

All (26) close contacts within the same asymmetric unit are listed below, sorted by their clash

magnitude.

Atom-1	Atom-2	Interatomic distance (Å)	Clash overlap (Å)
1:A:389:ILE:HG23	1:A:391:ASP:O	1.82	0.78
1:A:267:HIS:HD2	4:A:1937:HOH:O	1.69	0.75
1:A:295:LEU:HB2	4:A:2056:HOH:O	1.87	0.74
1:A:302:ARG:HD3	1:A:303:LEU:O	1.93	0.68
1:A:301:VAL:HG21	1:A:371:LEU:HD12	1.87	0.56
1:A:389:ILE:HD11	1:A:394:PTR:HB3	1.90	0.53
1:A:237:GLU:CD	1:A:237:GLU:H	2.11	0.52
1:A:237:GLU:HG2	1:A:238:TRP:CE3	2.44	0.52
1:A:409:PRO:HB3	2:A:903:SO4:O1	2.14	0.47
1:A:446:ASN:HB2	1:A:447:PRO:HD3	1.97	0.47
1:A:250:ARG:HD2	1:A:253:ALA:HB2	1.97	0.46
1:A:339:ASN:ND2	1:A:498:PHE:CD1	2.85	0.45
1:A:358:ARG:O	1:A:359:ASN:HB2	2.16	0.45
1:A:461:ARG:HG2	1:A:470:TYR:CD2	2.51	0.45
1:A:452:ASN:ND2	4:A:1985:HOH:O	2.50	0.44
1:A:234:TRP:CD1	1:A:235:GLU:HG3	2.53	0.43
1:A:292:MET:HA	4:A:2056:HOH:O	2.18	0.43
1:A:451:GLN:O	1:A:455:ARG:HG3	2.19	0.43
1:A:311:PRO:HA	4:A:1972:HOH:O	2.18	0.42
1:A:389:ILE:O	1:A:389:ILE:HG22	2.20	0.42
1:A:257:GLY:HA3	1:A:274:SER:O	2.20	0.42
1:A:339:ASN:ND2	1:A:498:PHE:HD1	2.17	0.41
1:A:275:LEU:HD11	1:A:280:MET:HG2	2.00	0.41
1:A:304:TYR:CZ	1:A:317:GLU:HA	2.55	0.41
1:A:282:PRO:HB3	1:A:312:ILE:CD1	2.51	0.40
1:A:357:GLU:OE1	1:A:358:ARG:HD2	2.21	0.40

There are no symmetry-related clashes.

5.3 Torsion angles ⓘ

5.3.1 Protein backbone ⓘ

In the following table, the Percentiles column shows the percent Ramachandran outliers of the chain as a percentile score with respect to all X-ray entries followed by that with respect to entries of similar resolution.

The Analysed column shows the number of residues for which the backbone conformation was analysed, and the total number of residues.

Mol	Chain	Analysed	Favoured	Allowed	Outliers	Percentiles	
1	A	268/279 (96%)	261 (97%)	7 (3%)	0	100	100

There are no Ramachandran outliers to report.

5.3.2 Protein sidechains ⓘ

In the following table, the Percentiles column shows the percent sidechain outliers of the chain as a percentile score with respect to all X-ray entries followed by that with respect to entries of similar resolution.

The Analysed column shows the number of residues for which the sidechain conformation was analysed, and the total number of residues.

Mol	Chain	Analysed	Rotameric	Outliers	Percentiles	
1	A	231/242 (96%)	223 (96%)	8 (4%)	43	40

All (8) residues with a non-rotameric sidechain are listed below:

Mol	Chain	Res	Type
1	A	240	VAL
1	A	291	LEU
1	A	302	ARG
1	A	328	LEU
1	A	382	ASP
1	A	389	ILE
1	A	391	ASP
1	A	452	ASN

Some sidechains can be flipped to improve hydrogen bonding and reduce clashes. All (6) such sidechains are listed below:

Mol	Chain	Res	Type
1	A	255	GLN
1	A	267	HIS
1	A	290	ASN
1	A	298	GLN
1	A	392	ASN
1	A	452	ASN

5.3.3 RNA ⓘ

There are no RNA molecules in this entry.

5.4 Non-standard residues in protein, DNA, RNA chains ⓘ

1 non-standard protein/DNA/RNA residue is modelled in this entry.

In the following table, the Counts columns list the number of bonds (or angles) for which Mogul statistics could be retrieved, the number of bonds (or angles) that are observed in the model and the number of bonds (or angles) that are defined in the chemical component dictionary. The Link column lists molecule types, if any, to which the group is linked. The Z score for a bond length (or angle) is the number of standard deviations the observed value is removed from the expected value. A bond length (or angle) with $|Z| > 2$ is considered an outlier worth inspection. RMSZ is the root-mean-square of all Z scores of the bond lengths (or angles).

Mol	Type	Chain	Res	Link	Bond lengths			Bond angles		
					Counts	RMSZ	# $ Z > 2$	Counts	RMSZ	# $ Z > 2$
1	PTR	A	394	1	14,16,17	0.99	1 (7%)	18,22,24	1.25	2 (11%)

In the following table, the Chirals column lists the number of chiral outliers, the number of chiral centers analysed, the number of these observed in the model and the number defined in the chemical component dictionary. Similar counts are reported in the Torsion and Rings columns. '-' means no outliers of that kind were identified.

Mol	Type	Chain	Res	Link	Chirals	Torsions	Rings
1	PTR	A	394	1	-	0/9/11/13	0/1/1/1

All (1) bond length outliers are listed below:

Mol	Chain	Res	Type	Atoms	Z	Observed(Å)	Ideal(Å)
1	A	394	PTR	P-O1P	-2.04	1.44	1.51

All (2) bond angle outliers are listed below:

Mol	Chain	Res	Type	Atoms	Z	Observed(°)	Ideal(°)
1	A	394	PTR	CD2-CE2-CZ	-2.83	116.18	119.74
1	A	394	PTR	O2P-P-OH	2.12	112.81	105.22

There are no chirality outliers.

There are no torsion outliers.

There are no ring outliers.

1 monomer is involved in 1 short contact:

Mol	Chain	Res	Type	Clashes	Symm-Clashes
1	A	394	PTR	1	0

5.5 Carbohydrates

There are no carbohydrates in this entry.

5.6 Ligand geometry

4 ligands are modelled in this entry.

In the following table, the Counts columns list the number of bonds (or angles) for which Mogul statistics could be retrieved, the number of bonds (or angles) that are observed in the model and the number of bonds (or angles) that are defined in the chemical component dictionary. The Link column lists molecule types, if any, to which the group is linked. The Z score for a bond length (or angle) is the number of standard deviations the observed value is removed from the expected value. A bond length (or angle) with $|Z| > 2$ is considered an outlier worth inspection. RMSZ is the root-mean-square of all Z scores of the bond lengths (or angles).

Mol	Type	Chain	Res	Link	Bond lengths			Bond angles		
					Counts	RMSZ	$\# Z > 2$	Counts	RMSZ	$\# Z > 2$
3	PP2	A	1904	-	20,23,23	2.30	4 (20%)	22,35,35	3.15	7 (31%)
2	SO4	A	901	-	4,4,4	1.27	0	6,6,6	0.25	0
2	SO4	A	902	-	4,4,4	1.23	0	6,6,6	0.14	0
2	SO4	A	903	-	4,4,4	1.09	0	6,6,6	0.35	0

In the following table, the Chirals column lists the number of chiral outliers, the number of chiral centers analysed, the number of these observed in the model and the number defined in the chemical component dictionary. Similar counts are reported in the Torsion and Rings columns. '-' means no outliers of that kind were identified.

Mol	Type	Chain	Res	Link	Chirals	Torsions	Rings
3	PP2	A	1904	-	-	0/7/10/10	0/3/3/3
2	SO4	A	901	-	-	0/0/0/0	0/0/0/0
2	SO4	A	902	-	-	0/0/0/0	0/0/0/0
2	SO4	A	903	-	-	0/0/0/0	0/0/0/0

All (4) bond length outliers are listed below:

Mol	Chain	Res	Type	Atoms	Z	Observed(Å)	Ideal(Å)
3	A	1904	PP2	C8-C6	-2.63	1.39	1.43
3	A	1904	PP2	C23-C22	3.99	1.58	1.52
3	A	1904	PP2	C16-C15	4.51	1.46	1.38
3	A	1904	PP2	C25-C22	6.05	1.61	1.52

All (7) bond angle outliers are listed below:

Mol	Chain	Res	Type	Atoms	Z	Observed(°)	Ideal(°)
3	A	1904	PP2	N2-C3-N4	-8.85	122.12	128.89
3	A	1904	PP2	C25-C22-C24	-7.77	96.35	110.04
3	A	1904	PP2	C15-C16-C11	-2.86	116.96	121.14
3	A	1904	PP2	C6-C5-N4	-2.83	115.36	122.89
3	A	1904	PP2	C24-C22-C23	3.33	115.90	110.04
3	A	1904	PP2	C3-N4-C5	3.87	125.69	118.77
3	A	1904	PP2	C24-C22-N10	4.52	115.94	108.80

There are no chirality outliers.

There are no torsion outliers.

There are no ring outliers.

1 monomer is involved in 1 short contact:

Mol	Chain	Res	Type	Clashes	Symm-Clashes
2	A	903	SO4	1	0

5.7 Other polymers [i](#)

There are no such residues in this entry.

5.8 Polymer linkage issues [i](#)

There are no chain breaks in this entry.

6 Fit of model and data [i](#)

6.1 Protein, DNA and RNA chains [i](#)

EDS was not executed - this section will therefore be empty.

6.2 Non-standard residues in protein, DNA, RNA chains [i](#)

EDS was not executed - this section will therefore be empty.

6.3 Carbohydrates [i](#)

EDS was not executed - this section will therefore be empty.

6.4 Ligands [i](#)

EDS was not executed - this section will therefore be empty.

6.5 Other polymers [i](#)

EDS was not executed - this section will therefore be empty.