



Full wwPDB X-ray Structure Validation Report ⓘ

Feb 1, 2016 – 05:28 AM GMT

PDB ID : 2QUJ
Title : Crystal structures of human tryptophanyl-tRNA synthetase in complex with TrpAMP
Authors : Shen, N.; Ding, J.P.
Deposited on : 2007-08-05
Resolution : 2.42 Å(reported)

This is a Full wwPDB X-ray Structure Validation Report for a publicly released PDB entry.
We welcome your comments at validation@mail.wwpdb.org
A user guide is available at
<http://wwpdb.org/validation/2016/XrayValidationReportHelp>
with specific help available everywhere you see the ⓘ symbol.

The following versions of software and data (see [references ⓘ](#)) were used in the production of this report:

MolProbity : 4.02b-467
Mogul : 1.7 (RC4), CSD as536be (2015)
Xtriage (Phenix) : 1.9-1692
EDS : rb-20026688
Percentile statistics : 20151230.v01 (using entries in the PDB archive December 30th 2015)
Refmac : 5.8.0135
CCP4 : 6.5.0
Ideal geometry (proteins) : Engh & Huber (2001)
Ideal geometry (DNA, RNA) : Parkinson et al. (1996)
Validation Pipeline (wwPDB-VP) : trunk26865

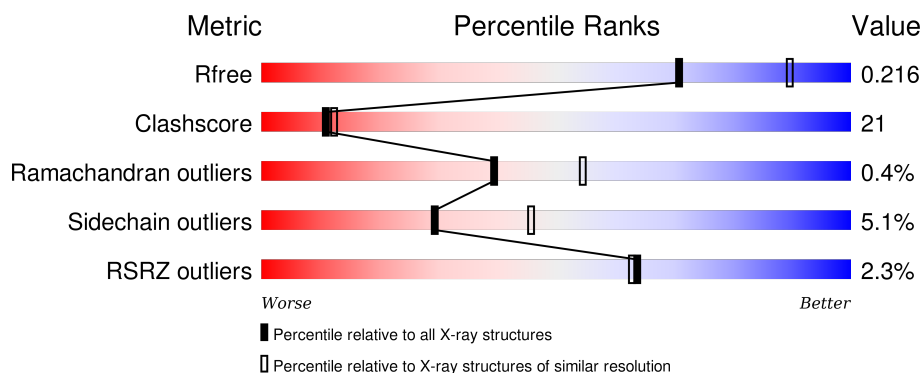
1 Overall quality at a glance

The following experimental techniques were used to determine the structure:

X-RAY DIFFRACTION

The reported resolution of this entry is 2.42 Å.

Percentile scores (ranging between 0-100) for global validation metrics of the entry are shown in the following graphic. The table shows the number of entries on which the scores are based.



Metric	Whole archive (#Entries)	Similar resolution (#Entries, resolution range(Å))
R_{free}	91344	3386 (2.44-2.40)
Clashscore	102246	3897 (2.44-2.40)
Ramachandran outliers	100387	3837 (2.44-2.40)
Sidechain outliers	100360	3838 (2.44-2.40)
RSRZ outliers	91569	3396 (2.44-2.40)

The table below summarises the geometric issues observed across the polymeric chains and their fit to the electron density. The red, orange, yellow and green segments on the lower bar indicate the fraction of residues that contain outliers for ≥ 3 , 2, 1 and 0 types of geometric quality criteria. A grey segment represents the fraction of residues that are not modelled. The numeric value for each fraction is indicated below the corresponding segment, with a dot representing fractions $\leq 5\%$. The upper red bar (where present) indicates the fraction of residues that have poor fit to the electron density. The numeric value is given above the bar.

Mol	Chain	Length	Quality of chain
1	A	477	<div> <div>3%</div> <div>48%</div> <div>31%</div> <div>•</div> <div>19%</div> </div>
1	B	477	<div> <div>%</div> <div>50%</div> <div>27%</div> <div>•</div> <div>21%</div> </div>

The following table lists non-polymeric compounds, carbohydrate monomers and non-standard residues in protein, DNA, RNA chains that are outliers for geometric or electron-density-fit criteria:

Mol	Type	Chain	Res	Chirality	Geometry	Clashes	Electron density
2	CL	B	808	-	-	X	-
3	TYM	A	810	-	-	-	X
5	GOL	A	813	-	X	-	-
5	GOL	A	814	-	X	-	X
5	GOL	B	812	-	X	-	-
5	GOL	B	815	-	X	-	X

2 Entry composition

There are 6 unique types of molecules in this entry. The entry contains 6422 atoms, of which 0 are hydrogens and 0 are deuteriums.

In the tables below, the ZeroOcc column contains the number of atoms modelled with zero occupancy, the AltConf column contains the number of residues with at least one atom in alternate conformation and the Trace column contains the number of residues modelled with at most 2 atoms.

- Molecule 1 is a protein called Tryptophanyl-tRNA synthetase.

Mol	Chain	Residues	Atoms					ZeroOcc	AltConf	Trace
1	A	388	Total	C	N	O	S	0	0	0
			3106	1988	533	570	15			
1	B	378	Total	C	N	O	S	0	0	0
			3033	1947	511	560	15			

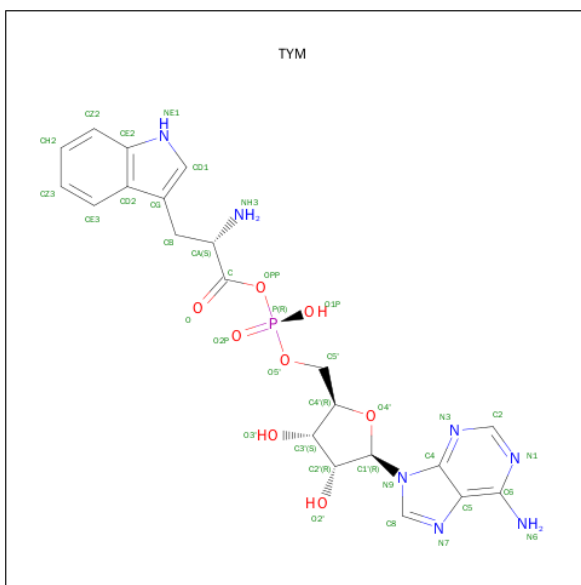
There are 12 discrepancies between the modelled and reference sequences:

Chain	Residue	Modelled	Actual	Comment	Reference
A	472	HIS	-	EXPRESSION TAG	UNP P23381
A	473	HIS	-	EXPRESSION TAG	UNP P23381
A	474	HIS	-	EXPRESSION TAG	UNP P23381
A	475	HIS	-	EXPRESSION TAG	UNP P23381
A	476	HIS	-	EXPRESSION TAG	UNP P23381
A	477	HIS	-	EXPRESSION TAG	UNP P23381
B	472	HIS	-	EXPRESSION TAG	UNP P23381
B	473	HIS	-	EXPRESSION TAG	UNP P23381
B	474	HIS	-	EXPRESSION TAG	UNP P23381
B	475	HIS	-	EXPRESSION TAG	UNP P23381
B	476	HIS	-	EXPRESSION TAG	UNP P23381
B	477	HIS	-	EXPRESSION TAG	UNP P23381

- Molecule 2 is CHLORIDE ION (three-letter code: CL) (formula: Cl).

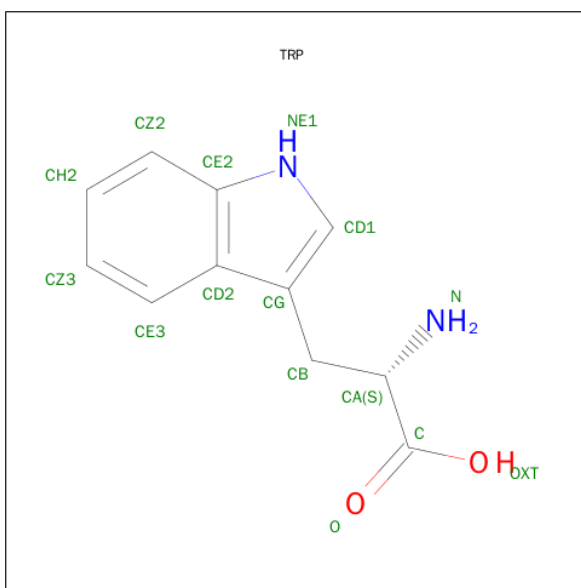
Mol	Chain	Residues	Atoms		ZeroOcc	AltConf
2	B	4	Total	Cl	0	0
			4	4		
2	A	5	Total	Cl	0	0
			5	5		

- Molecule 3 is TRYPTOPHANYL-5'AMP (three-letter code: TYM) (formula: C₂₁H₂₄N₇O₈P).



Mol	Chain	Residues	Atoms					ZeroOcc	AltConf
3	A	1	Total	C	N	O	P	0	0
			37	21	7	8	1		

- Molecule 4 is TRYPTOPHAN (three-letter code: TRP) (formula: $C_{11}H_{12}N_2O_2$).



Mol	Chain	Residues	Atoms				ZeroOcc	AltConf
4	B	1	Total	C	N	O	0	0
			15	11	2	2		

- Molecule 5 is GLYCEROL (three-letter code: GOL) (formula: $\text{C}_3\text{H}_8\text{O}_3$).



Mol	Chain	Residues	Atoms			ZeroOcc	AltConf
5	B	1	Total	C	O	0	0
			6	3	3		
5	A	1	Total	C	O	0	0
			6	3	3		
5	A	1	Total	C	O	0	0
			6	3	3		
5	B	1	Total	C	O	0	0
			6	3	3		

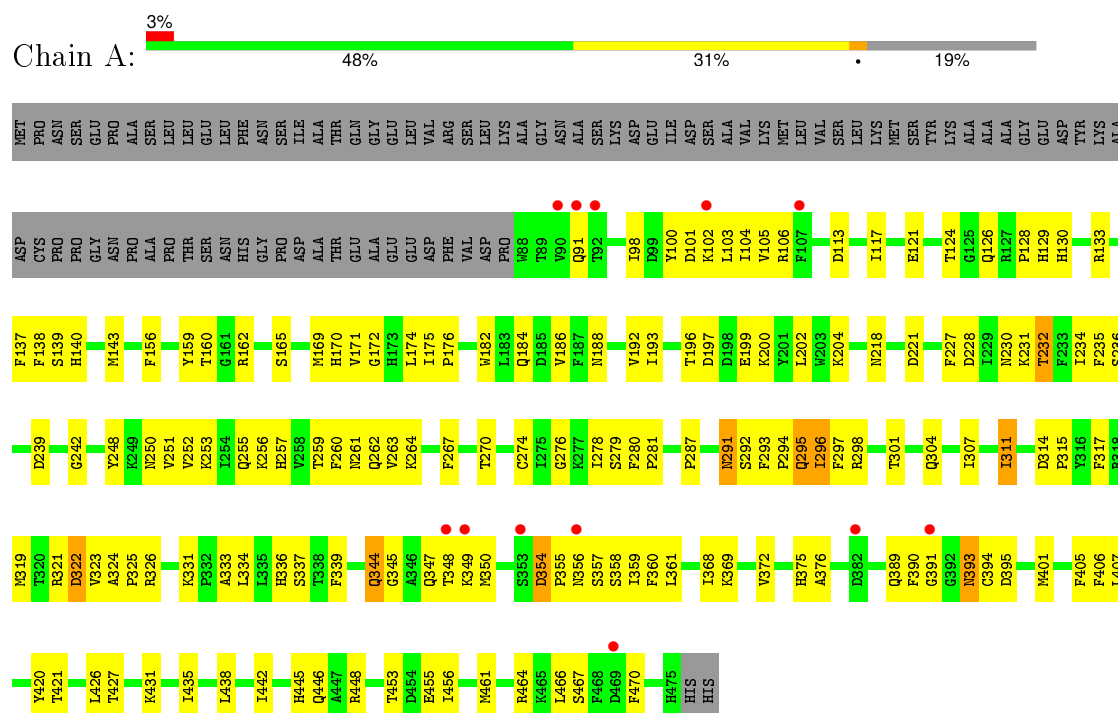
- Molecule 6 is water.

Mol	Chain	Residues	Atoms		ZeroOcc	AltConf
6	A	98	Total	O	0	0
			98	98		
6	B	100	Total	O	0	0
			100	100		

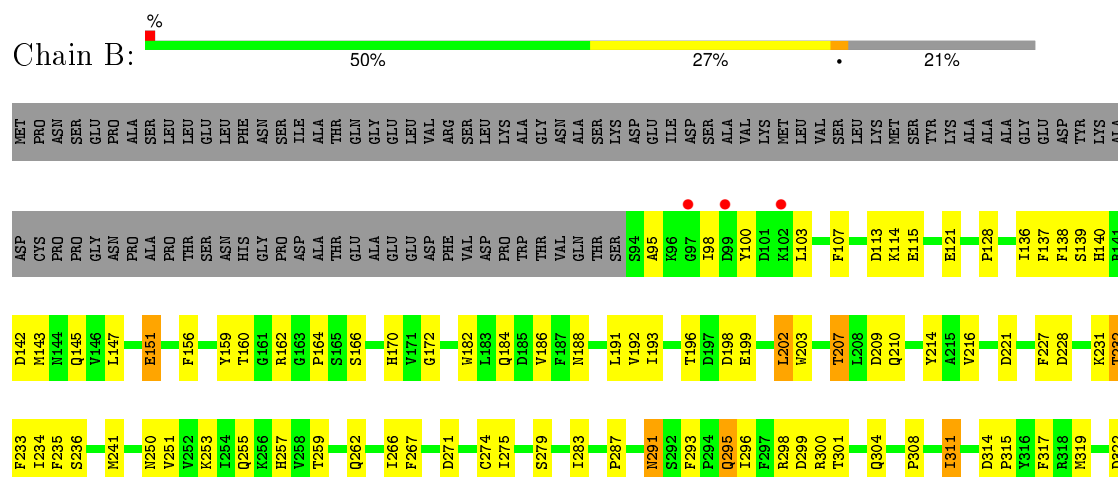
3 Residue-property plots

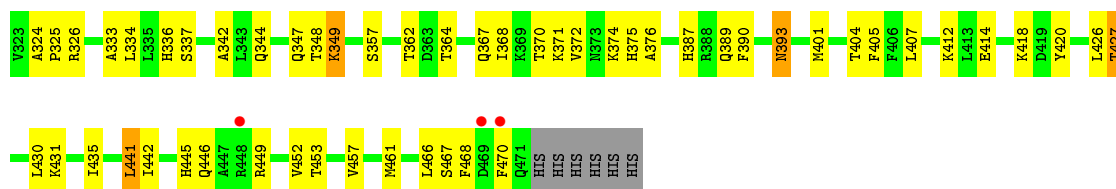
These plots are drawn for all protein, RNA and DNA chains in the entry. The first graphic for a chain summarises the proportions of errors displayed in the second graphic. The second graphic shows the sequence view annotated by issues in geometry and electron density. Residues are color-coded according to the number of geometric quality criteria for which they contain at least one outlier: green = 0, yellow = 1, orange = 2 and red = 3 or more. A red dot above a residue indicates a poor fit to the electron density ($RSRZ > 2$). Stretches of 2 or more consecutive residues without any outlier are shown as a green connector. Residues present in the sample, but not in the model, are shown in grey.

• Molecule 1: Tryptophanyl-tRNA synthetase



• Molecule 1: Tryptophanyl-tRNA synthetase





4 Data and refinement statistics

Property	Value	Source
Space group	P 43 21 2	Depositor
Cell constants a, b, c, α , β , γ	80.00 Å 80.00 Å 383.00 Å 90.00° 90.00° 90.00°	Depositor
Resolution (Å)	50.00 – 2.42 49.90 – 2.42	Depositor EDS
% Data completeness (in resolution range)	87.9 (50.00-2.42) 88.0 (49.90-2.42)	Depositor EDS
R_{merge}	0.07	Depositor
R_{sym}	(Not available)	Depositor
$\langle I/\sigma(I) \rangle$ ¹	3.71 (at 2.42 Å)	Xtriage
Refinement program	CNS 1.1	Depositor
R, R_{free}	0.214 , 0.238 0.219 , 0.216	Depositor DCC
R_{free} test set	2178 reflections (5.05%)	DCC
Wilson B-factor (Å ²)	41.9	Xtriage
Anisotropy	0.507	Xtriage
Bulk solvent k_{sol} (e/Å ³), B_{sol} (Å ²)	0.36 , 47.2	EDS
Estimated twinning fraction	No twinning to report.	Xtriage
L-test for twinning ²	$\langle L \rangle = 0.50$, $\langle L^2 \rangle = 0.33$	Xtriage
Outliers	1 of 43231 reflections (0.002%)	Xtriage
F_o, F_c correlation	0.94	EDS
Total number of atoms	6422	wwPDB-VP
Average B, all atoms (Å ²)	47.0	wwPDB-VP

Xtriage's analysis on translational NCS is as follows: *The largest off-origin peak in the Patterson function is 3.03% of the height of the origin peak. No significant pseudotranslation is detected.*

¹ Intensities estimated from amplitudes.

² Theoretical values of $\langle |L| \rangle$, $\langle L^2 \rangle$ for acentric reflections are 0.5, 0.375 respectively for untwinned datasets, and 0.333, 0.2 for perfectly twinned datasets.

5 Model quality

5.1 Standard geometry

Bond lengths and bond angles in the following residue types are not validated in this section: GOL, CL, TYM

The Z score for a bond length (or angle) is the number of standard deviations the observed value is removed from the expected value. A bond length (or angle) with $|Z| > 5$ is considered an outlier worth inspection. RMSZ is the root-mean-square of all Z scores of the bond lengths (or angles).

Mol	Chain	Bond lengths		Bond angles	
		RMSZ	# Z >5	RMSZ	# Z >5
1	A	0.37	0/3184	0.60	0/4296
1	B	0.39	0/3107	0.61	0/4195
All	All	0.38	0/6291	0.61	0/8491

There are no bond length outliers.

There are no bond angle outliers.

There are no chirality outliers.

There are no planarity outliers.

5.2 Too-close contacts

In the following table, the Non-H and H(model) columns list the number of non-hydrogen atoms and hydrogen atoms in the chain respectively. The H(added) column lists the number of hydrogen atoms added and optimized by MolProbity. The Clashes column lists the number of clashes within the asymmetric unit, whereas Symm-Clashes lists symmetry related clashes.

Mol	Chain	Non-H	H(model)	H(added)	Clashes	Symm-Clashes
1	A	3106	0	3024	145	0
1	B	3033	0	2971	120	0
2	A	5	0	0	0	0
2	B	4	0	0	2	0
3	A	37	0	23	5	0
4	B	15	0	9	0	0
5	A	12	0	8	2	0
5	B	12	0	8	1	0
6	A	98	0	0	1	0
6	B	100	0	0	1	0
All	All	6422	0	6043	258	0

The all-atom clashscore is defined as the number of clashes found per 1000 atoms (including hydrogen atoms). The all-atom clashscore for this structure is 21.

All (258) close contacts within the same asymmetric unit are listed below, sorted by their clash magnitude.

Atom-1	Atom-2	Interatomic distance (Å)	Clash overlap (Å)
1:A:344:GLN:HE22	1:A:357:SER:HA	1.12	1.08
1:B:95:ALA:HA	1:B:347:GLN:HE21	1.19	1.06
1:B:207:THR:HG22	1:B:210:GLN:H	1.18	1.05
1:A:250:ASN:HD21	1:A:291:ASN:ND2	1.57	1.01
1:A:250:ASN:HD21	1:A:291:ASN:HD21	1.18	0.88
1:A:176:PRO:HG3	3:A:810:TYM:H1'C	1.55	0.88
1:A:354:ASP:HB2	1:A:357:SER:HB3	1.57	0.86
1:B:250:ASN:HD21	1:B:291:ASN:ND2	1.76	0.83
1:A:344:GLN:NE2	1:A:357:SER:HA	1.92	0.82
1:B:228:ASP:O	1:B:232:THR:HG23	1.80	0.81
1:A:174:LEU:HD21	1:A:361:LEU:HD11	1.60	0.81
1:B:344:GLN:HE21	1:B:357:SER:HA	1.46	0.80
1:B:160:THR:HG22	1:B:308:PRO:O	1.82	0.80
1:A:372:VAL:HG12	1:A:431:LYS:HG3	1.66	0.78
1:A:261:ASN:ND2	1:B:271:ASP:HB3	2.00	0.77
1:A:234:ILE:O	1:A:461:MET:HA	1.86	0.76
1:B:228:ASP:OD2	1:B:231:LYS:HG3	1.86	0.76
1:B:227:PHE:HB3	1:B:232:THR:HG21	1.68	0.75
1:B:159:TYR:CZ	1:B:287:PRO:HG2	2.21	0.75
1:A:350:MET:HE1	1:A:358:SER:HA	1.66	0.75
1:B:453:THR:O	1:B:457:VAL:HG23	1.88	0.74
1:B:344:GLN:NE2	1:B:357:SER:HA	2.03	0.73
1:B:95:ALA:HA	1:B:347:GLN:NE2	1.99	0.73
1:B:267:PHE:HE1	1:B:319:MET:HE3	1.54	0.73
1:A:354:ASP:HB2	1:A:357:SER:CB	2.17	0.73
1:A:293:PHE:HB3	1:A:296:ILE:HG23	1.70	0.72
1:B:140:HIS:HD2	1:B:143:MET:H	1.38	0.71
1:A:228:ASP:O	1:A:232:THR:HG23	1.91	0.70
1:A:159:TYR:CZ	1:A:287:PRO:HG2	2.26	0.70
1:B:207:THR:HG22	1:B:210:GLN:N	2.02	0.69
1:A:294:PRO:HD2	1:A:295:GLN:NE2	2.07	0.69
1:A:420:TYR:OH	1:A:427:THR:HG22	1.91	0.69
1:B:103:LEU:HD21	1:B:311:ILE:HG21	1.75	0.69
1:B:139:SER:HB3	1:B:336:HIS:HB2	1.75	0.69
1:A:448:ARG:HD2	6:A:877:HOH:O	1.94	0.67
1:A:455:GLU:CD	1:A:455:GLU:H	1.97	0.66
1:B:414:GLU:OE2	1:B:418:LYS:HE3	1.96	0.66

Continued on next page...

Continued from previous page...

Atom-1	Atom-2	Interatomic distance (Å)	Clash overlap (Å)
1:A:350:MET:CG	1:A:358:SER:HB3	2.26	0.65
1:A:324:ALA:HB3	1:A:325:PRO:HD3	1.79	0.65
1:A:260:PHE:HE1	1:A:278:ILE:HD12	1.61	0.65
1:A:261:ASN:HD21	1:B:271:ASP:HB3	1.61	0.65
1:B:160:THR:CG2	1:B:308:PRO:O	2.44	0.65
1:A:140:HIS:HD2	1:A:143:MET:H	1.43	0.65
1:A:137:PHE:CZ	1:A:337:SER:HB3	2.31	0.65
1:A:354:ASP:CB	1:A:357:SER:HB3	2.25	0.64
1:A:350:MET:CE	1:A:358:SER:HA	2.27	0.64
1:B:137:PHE:CZ	1:B:337:SER:HB3	2.33	0.64
1:B:457:VAL:HG12	1:B:461:MET:HE3	1.79	0.63
1:A:296:ILE:HD13	1:A:466:LEU:HD12	1.80	0.63
1:B:441:LEU:HD23	1:B:442:ILE:HG13	1.78	0.63
1:A:442:ILE:O	1:A:446:GLN:HG3	1.98	0.63
1:A:250:ASN:ND2	1:A:291:ASN:HD21	1.94	0.62
1:B:342:ALA:HB1	1:B:357:SER:HB2	1.80	0.62
1:A:169:MET:CE	1:A:218:ASN:HA	2.29	0.62
1:B:326:ARG:HD3	6:B:886:HOH:O	1.98	0.62
1:A:140:HIS:CD2	1:A:143:MET:H	2.18	0.61
1:A:139:SER:HB3	1:A:336:HIS:HB2	1.82	0.61
1:B:457:VAL:HG12	1:B:461:MET:CE	2.31	0.61
1:A:295:GLN:H	1:A:295:GLN:NE2	1.98	0.61
1:A:333:ALA:C	1:A:334:LEU:HD12	2.22	0.60
1:A:453:THR:OG1	1:A:456:ILE:HG13	2.01	0.60
1:B:216:VAL:HG22	1:B:461:MET:HE1	1.84	0.59
1:A:253:LYS:O	1:A:257:HIS:HD2	1.85	0.59
1:B:372:VAL:HG12	1:B:431:LYS:HG3	1.82	0.59
1:B:147:LEU:O	1:B:151:GLU:HB2	2.03	0.59
1:B:250:ASN:HD21	1:B:291:ASN:HD21	1.48	0.58
1:A:250:ASN:ND2	1:A:291:ASN:ND2	2.41	0.58
1:A:448:ARG:HH11	1:A:448:ARG:HG2	1.69	0.58
1:A:260:PHE:CE1	1:A:278:ILE:HD12	2.37	0.58
1:B:370:THR:HG23	1:B:374:LYS:HD3	1.85	0.58
1:B:253:LYS:O	1:B:257:HIS:HD2	1.86	0.58
1:B:267:PHE:CE1	1:B:319:MET:HE3	2.36	0.58
1:A:126:GLN:HG3	1:A:186:VAL:HG22	1.85	0.57
1:A:176:PRO:HG3	3:A:810:TYM:C1'	2.30	0.57
1:B:160:THR:HG23	1:B:308:PRO:HG2	1.85	0.57
1:A:294:PRO:HD2	1:A:295:GLN:HE21	1.67	0.57
1:B:442:ILE:O	1:B:446:GLN:HG3	2.04	0.57
1:A:293:PHE:HA	1:A:295:GLN:HE22	1.69	0.57

Continued on next page...

Continued from previous page...

Atom-1	Atom-2	Interatomic distance (Å)	Clash overlap (Å)
1:B:376:ALA:HB3	1:B:431:LYS:HE2	1.85	0.56
1:B:449:ARG:O	1:B:452:VAL:HG12	2.06	0.56
1:A:255:GLN:HE21	1:A:279:SER:HB2	1.70	0.56
1:B:114:LYS:HG3	2:B:808:CL:CL	2.42	0.56
1:A:124:THR:HB	1:A:186:VAL:HG13	1.87	0.55
1:A:169:MET:CE	1:A:221:ASP:HB2	2.35	0.55
1:A:348:THR:HG22	1:A:349:LYS:H	1.72	0.55
1:A:259:THR:OG1	1:A:262:GLN:HG3	2.06	0.55
1:B:207:THR:HG23	1:B:209:ASP:H	1.72	0.55
1:B:259:THR:HG23	1:B:262:GLN:HE21	1.71	0.54
1:B:207:THR:CG2	1:B:210:GLN:HG3	2.37	0.54
1:A:227:PHE:HB3	1:A:232:THR:HG21	1.90	0.54
1:A:264:LYS:HZ2	1:A:270:THR:HA	1.72	0.54
1:B:367:GLN:O	1:B:371:LYS:HG3	2.07	0.54
1:A:162:ARG:HA	3:A:810:TYM:H5'2	1.89	0.54
1:B:182:TRP:CZ2	1:B:186:VAL:HG21	2.42	0.54
1:A:350:MET:HG3	1:A:358:SER:HB3	1.88	0.54
1:A:159:TYR:O	1:A:307:ILE:HG23	2.07	0.54
1:B:326:ARG:HH11	1:B:326:ARG:HG2	1.73	0.54
1:A:267:PHE:HE1	1:A:319:MET:HE3	1.72	0.54
1:A:348:THR:HG22	1:A:349:LYS:N	2.23	0.54
1:A:199:GLU:HB2	1:A:280:PHE:CZ	2.43	0.54
1:A:169:MET:HE1	1:A:218:ASN:HA	1.90	0.53
1:B:182:TRP:CE2	1:B:186:VAL:HG21	2.43	0.53
1:B:170:HIS:HD2	1:B:172:GLY:N	2.06	0.53
1:A:344:GLN:CD	1:A:344:GLN:H	2.11	0.53
1:A:98:ILE:HD12	1:A:339:PHE:CE2	2.43	0.53
1:A:448:ARG:NH1	1:A:448:ARG:HG2	2.24	0.53
1:B:234:ILE:O	1:B:461:MET:HA	2.08	0.52
1:B:259:THR:H	1:B:262:GLN:NE2	2.07	0.52
1:A:169:MET:HE2	1:A:218:ASN:HA	1.91	0.52
1:B:317:PHE:HB2	1:B:334:LEU:HD21	1.92	0.52
1:B:140:HIS:CD2	1:B:143:MET:H	2.23	0.52
1:B:160:THR:CG2	1:B:308:PRO:HG2	2.39	0.52
1:A:267:PHE:CE1	1:A:319:MET:HE3	2.45	0.52
1:B:221:ASP:OD1	1:B:445:HIS:HE1	1.93	0.52
1:B:291:ASN:HB3	1:B:301:THR:HG22	1.90	0.52
1:A:295:GLN:H	1:A:295:GLN:CD	2.14	0.52
1:B:387:HIS:HD2	1:B:426:LEU:HD23	1.73	0.52
1:A:344:GLN:HE22	1:A:357:SER:CA	2.03	0.52
1:A:188:ASN:ND2	1:A:231:LYS:NZ	2.58	0.51

Continued on next page...

Continued from previous page...

Atom-1	Atom-2	Interatomic distance (Å)	Clash overlap (Å)
1:B:364:THR:O	1:B:368:ILE:HG13	2.10	0.51
1:A:393:ASN:C	1:A:393:ASN:HD22	2.12	0.51
1:A:264:LYS:NZ	1:A:270:THR:HA	2.26	0.51
1:B:427:THR:HG23	5:B:815:GOL:C3	2.41	0.51
3:A:810:TYM:HE3C	3:A:810:TYM:H3'C	1.93	0.51
1:A:170:HIS:HD2	1:A:172:GLY:N	2.08	0.51
1:B:296:ILE:CG2	1:B:466:LEU:HG	2.41	0.50
1:A:349:LYS:HE3	3:A:810:TYM:N7	2.25	0.50
1:B:296:ILE:HG22	1:B:466:LEU:HG	1.94	0.50
1:B:348:THR:HG22	1:B:349:LYS:N	2.25	0.50
1:A:259:THR:H	1:A:262:GLN:NE2	2.09	0.50
1:A:129:HIS:HB2	1:A:182:TRP:CD2	2.46	0.50
1:A:426:LEU:HB3	5:A:814:GOL:O3	2.12	0.49
1:A:102:LYS:O	1:A:105:VAL:HG12	2.11	0.49
1:A:317:PHE:HB2	1:A:334:LEU:HD21	1.94	0.49
1:A:314:ASP:N	1:A:315:PRO:HD2	2.26	0.49
1:B:233:PHE:CZ	1:B:235:PHE:HB3	2.47	0.49
1:A:170:HIS:HD2	1:A:172:GLY:H	1.58	0.49
1:A:292:SER:C	1:A:294:PRO:HD3	2.33	0.49
1:B:468:PHE:HB3	1:B:470:PHE:CE1	2.47	0.49
1:A:137:PHE:CE2	1:A:337:SER:HB3	2.48	0.49
1:A:393:ASN:ND2	1:A:395:ASP:H	2.10	0.48
1:B:113:ASP:OD1	1:B:115:GLU:HB3	2.13	0.48
1:B:159:TYR:OH	1:B:287:PRO:HG2	2.13	0.48
1:A:171:VAL:HG13	1:A:406:PHE:CZ	2.48	0.48
1:A:296:ILE:HG13	1:A:297:PHE:CD1	2.48	0.48
1:A:130:HIS:HB3	1:A:133:ARG:NH2	2.28	0.48
1:B:295:GLN:NE2	1:B:295:GLN:H	2.12	0.48
1:B:393:ASN:C	1:B:393:ASN:HD22	2.15	0.48
1:A:354:ASP:HB2	1:A:357:SER:OG	2.13	0.48
1:B:98:ILE:HD11	1:B:103:LEU:HD22	1.94	0.48
1:A:322:ASP:O	1:A:325:PRO:HD2	2.13	0.48
1:A:124:THR:HG21	1:A:186:VAL:CG1	2.43	0.48
1:B:156:PHE:HB2	1:B:304:GLN:HB3	1.96	0.48
1:A:260:PHE:CE2	1:A:264:LYS:HD2	2.49	0.48
1:B:251:VAL:O	1:B:255:GLN:HG3	2.14	0.47
1:B:333:ALA:C	1:B:334:LEU:HD12	2.34	0.47
1:B:311:ILE:HG12	1:B:336:HIS:HB3	1.96	0.47
1:A:361:LEU:HD13	1:A:445:HIS:CE1	2.49	0.47
1:A:263:VAL:HG12	1:A:319:MET:CE	2.45	0.47
1:A:121:GLU:HB2	1:A:128:PRO:HD3	1.97	0.47

Continued on next page...

Continued from previous page...

Atom-1	Atom-2	Interatomic distance (Å)	Clash overlap (Å)
1:A:169:MET:HE3	1:A:221:ASP:HB2	1.96	0.47
1:A:294:PRO:CD	1:A:295:GLN:NE2	2.77	0.47
1:A:427:THR:HG23	5:A:814:GOL:C3	2.45	0.47
1:B:401:MET:O	1:B:404:THR:HB	2.14	0.47
1:A:298:ARG:HD2	1:A:470:PHE:O	2.15	0.47
1:A:389:GLN:HG2	1:A:390:PHE:CE1	2.50	0.47
1:A:345:GLY:HA3	1:A:347:GLN:NE2	2.29	0.47
1:B:207:THR:HG22	1:B:210:GLN:HG3	1.96	0.47
1:B:420:TYR:OH	1:B:427:THR:HG22	2.15	0.46
1:B:136:ILE:HD11	1:B:404:THR:HG22	1.97	0.46
1:B:298:ARG:C	1:B:300:ARG:H	2.19	0.46
1:A:169:MET:HE1	1:A:221:ASP:HB2	1.97	0.46
1:A:248:TYR:O	1:A:252:VAL:HG23	2.15	0.46
1:B:324:ALA:N	1:B:325:PRO:HD2	2.31	0.46
1:A:170:HIS:CD2	1:A:172:GLY:H	2.34	0.46
1:A:184:GLN:OE1	1:A:232:THR:HG22	2.15	0.45
1:A:278:ILE:HG22	1:B:275:ILE:HG22	1.99	0.45
1:B:114:LYS:HE3	2:B:808:CL:CL	2.53	0.45
1:A:259:THR:HA	1:B:274:CYS:HA	1.97	0.45
1:A:321:ARG:O	1:A:331:LYS:HE2	2.16	0.45
1:B:314:ASP:OD2	1:B:336:HIS:CE1	2.69	0.45
1:A:263:VAL:HG12	1:A:319:MET:HE1	1.99	0.45
1:A:98:ILE:HD12	1:A:339:PHE:HE2	1.80	0.45
1:B:100:TYR:HB3	1:B:138:PHE:CE2	2.51	0.45
1:B:407:LEU:HD11	1:B:412:LYS:HD3	1.98	0.45
1:B:103:LEU:O	1:B:107:PHE:HB2	2.17	0.45
1:A:251:VAL:O	1:A:255:GLN:HG3	2.16	0.45
1:A:100:TYR:HB3	1:A:138:PHE:CE2	2.51	0.45
1:A:368:ILE:O	1:A:372:VAL:HG23	2.17	0.44
1:A:192:VAL:HG13	1:A:235:PHE:HE1	1.82	0.44
1:A:169:MET:HE3	1:A:221:ASP:CB	2.48	0.44
1:B:344:GLN:HE21	1:B:357:SER:CA	2.23	0.44
1:A:311:ILE:HG23	1:A:336:HIS:HB3	1.99	0.44
1:B:170:HIS:HD2	1:B:172:GLY:H	1.65	0.44
1:A:174:LEU:HD21	1:A:361:LEU:CD1	2.39	0.44
1:B:314:ASP:N	1:B:315:PRO:HD2	2.32	0.44
1:A:298:ARG:O	1:A:298:ARG:HG2	2.18	0.44
1:A:242:GLY:HA2	1:B:241:MET:O	2.18	0.44
1:B:371:LYS:O	1:B:375:HIS:HB2	2.17	0.44
1:A:393:ASN:C	1:A:393:ASN:ND2	2.71	0.44
1:A:323:VAL:HG12	1:A:326:ARG:NH2	2.32	0.44

Continued on next page...

Continued from previous page...

Atom-1	Atom-2	Interatomic distance (Å)	Clash overlap (Å)
1:B:142:ASP:HB3	1:B:145:GLN:CG	2.48	0.44
1:A:113:ASP:O	1:A:117:ILE:HG13	2.18	0.43
1:A:160:THR:O	1:A:193:ILE:HA	2.18	0.43
1:B:362:THR:HA	1:B:446:GLN:HE21	1.82	0.43
1:A:156:PHE:HA	1:A:304:GLN:O	2.19	0.43
1:A:200:LYS:HD3	1:A:200:LYS:HA	1.83	0.43
1:A:221:ASP:OD2	1:A:445:HIS:HE1	2.00	0.43
1:B:431:LYS:O	1:B:435:ILE:HG13	2.18	0.43
1:A:165:SER:HB3	1:A:204:LYS:HE3	2.00	0.43
1:A:359:ILE:HD13	1:A:438:LEU:HD13	1.99	0.43
1:A:355:PRO:HA	1:A:360:PHE:HE2	1.82	0.43
1:B:255:GLN:HE21	1:B:279:SER:HB2	1.83	0.43
1:A:100:TYR:O	1:A:104:ILE:HG13	2.19	0.43
1:A:230:ASN:HB3	1:A:467:SER:OG	2.19	0.43
1:B:191:LEU:HD21	1:B:193:ILE:HD11	2.01	0.43
1:B:137:PHE:CE2	1:B:337:SER:HB3	2.53	0.43
1:B:262:GLN:O	1:B:266:ILE:HG13	2.19	0.43
1:B:387:HIS:CD2	1:B:426:LEU:HD23	2.52	0.42
1:B:389:GLN:NE2	1:B:390:PHE:CZ	2.87	0.42
1:B:138:PHE:H	1:B:138:PHE:HD1	1.68	0.42
1:A:391:GLY:HA3	1:A:421:THR:O	2.19	0.42
1:A:256:LYS:HD3	1:B:202:LEU:HA	2.00	0.42
1:A:274:CYS:HA	1:B:259:THR:HA	2.01	0.42
1:B:348:THR:HG22	1:B:349:LYS:O	2.20	0.42
1:B:121:GLU:HB2	1:B:128:PRO:HD3	2.01	0.42
1:B:184:GLN:O	1:B:188:ASN:HA	2.20	0.42
1:A:192:VAL:HG11	1:A:293:PHE:CZ	2.55	0.42
1:A:139:SER:OG	1:A:336:HIS:HD2	2.02	0.42
1:A:401:MET:O	1:A:405:PHE:HD1	2.02	0.42
1:B:393:ASN:C	1:B:393:ASN:ND2	2.73	0.41
1:B:196:THR:HB	1:B:199:GLU:HB2	2.01	0.41
1:A:260:PHE:HE1	1:A:278:ILE:CD1	2.30	0.41
1:A:124:THR:CG2	1:A:186:VAL:HG13	2.50	0.41
1:A:393:ASN:HD22	1:A:394:CYS:N	2.18	0.41
1:A:369:LYS:HA	1:A:435:ILE:HD13	2.02	0.41
1:B:139:SER:OG	1:B:336:HIS:HD2	2.02	0.41
1:B:298:ARG:C	1:B:300:ARG:N	2.74	0.41
1:B:298:ARG:O	1:B:300:ARG:N	2.54	0.41
1:B:347:GLN:CD	1:B:347:GLN:H	2.24	0.41
1:B:198:ASP:N	1:B:198:ASP:OD1	2.53	0.41
1:A:376:ALA:HB3	1:A:431:LYS:HE2	2.03	0.41

Continued on next page...

Continued from previous page...

Atom-1	Atom-2	Interatomic distance (Å)	Clash overlap (Å)
1:A:311:ILE:HG13	1:A:337:SER:O	2.21	0.41
1:B:136:ILE:HD13	1:B:405:PHE:CD2	2.56	0.41
1:B:241:MET:CE	1:B:283:ILE:HD12	2.51	0.41
1:B:166:SER:HA	1:B:214:TYR:CD2	2.54	0.41
1:A:280:PHE:N	1:A:281:PRO:CD	2.84	0.41
1:B:466:LEU:O	1:B:468:PHE:N	2.50	0.41
1:A:105:VAL:HG13	1:A:106:ARG:N	2.36	0.41
1:A:356:ASN:HD22	1:A:375:HIS:CD2	2.38	0.41
1:B:162:ARG:O	1:B:164:PRO:HD3	2.20	0.41
1:B:234:ILE:O	1:B:461:MET:HG2	2.22	0.40
1:B:293:PHE:HB3	1:B:296:ILE:HG12	2.03	0.40
1:A:276:GLY:CA	1:B:255:GLN:HB3	2.51	0.40
1:A:196:THR:HB	1:A:199:GLU:HB3	2.04	0.40
1:A:354:ASP:HA	1:A:355:PRO:HD2	1.96	0.40
1:B:142:ASP:HB3	1:B:145:GLN:HG3	2.03	0.40
1:A:175:ILE:HD12	1:A:405:PHE:HD2	1.86	0.40

There are no symmetry-related clashes.

5.3 Torsion angles [i](#)

5.3.1 Protein backbone [i](#)

In the following table, the Percentiles column shows the percent Ramachandran outliers of the chain as a percentile score with respect to all X-ray entries followed by that with respect to entries of similar resolution.

The Analysed column shows the number of residues for which the backbone conformation was analysed, and the total number of residues.

Mol	Chain	Analysed	Favoured	Allowed	Outliers	Percentiles	
1	A	386/477 (81%)	370 (96%)	15 (4%)	1 (0%)	46	62
1	B	376/477 (79%)	362 (96%)	12 (3%)	2 (0%)	34	47
All	All	762/954 (80%)	732 (96%)	27 (4%)	3 (0%)	39	54

All (3) Ramachandran outliers are listed below:

Mol	Chain	Res	Type
1	A	91	GLN
1	B	299	ASP

Continued on next page...

Continued from previous page...

Mol	Chain	Res	Type
1	B	467	SER

5.3.2 Protein sidechains ⓘ

In the following table, the Percentiles column shows the percent sidechain outliers of the chain as a percentile score with respect to all X-ray entries followed by that with respect to entries of similar resolution.

The Analysed column shows the number of residues for which the sidechain conformation was analysed, and the total number of residues.

Mol	Chain	Analysed	Rotameric	Outliers	Percentiles	
1	A	335/416 (80%)	317 (95%)	18 (5%)	27	42
1	B	329/416 (79%)	313 (95%)	16 (5%)	31	48
All	All	664/832 (80%)	630 (95%)	34 (5%)	29	46

All (34) residues with a non-rotameric sidechain are listed below:

Mol	Chain	Res	Type
1	A	101	ASP
1	A	103	LEU
1	A	197	ASP
1	A	202	LEU
1	A	232	THR
1	A	236	SER
1	A	239	ASP
1	A	291	ASN
1	A	295	GLN
1	A	296	ILE
1	A	301	THR
1	A	311	ILE
1	A	322	ASP
1	A	344	GLN
1	A	354	ASP
1	A	393	ASN
1	A	407	LEU
1	A	464	ARG
1	B	151	GLU
1	B	192	VAL
1	B	202	LEU
1	B	203	TRP

Continued on next page...

Continued from previous page...

Mol	Chain	Res	Type
1	B	207	THR
1	B	232	THR
1	B	236	SER
1	B	291	ASN
1	B	295	GLN
1	B	311	ILE
1	B	322	ASP
1	B	349	LYS
1	B	393	ASN
1	B	427	THR
1	B	430	LEU
1	B	441	LEU

Some sidechains can be flipped to improve hydrogen bonding and reduce clashes. All (27) such sidechains are listed below:

Mol	Chain	Res	Type
1	A	140	HIS
1	A	170	HIS
1	A	188	ASN
1	A	255	GLN
1	A	257	HIS
1	A	261	ASN
1	A	262	GLN
1	A	291	ASN
1	A	295	GLN
1	A	304	GLN
1	A	336	HIS
1	A	344	GLN
1	A	347	GLN
1	A	375	HIS
1	A	393	ASN
1	A	445	HIS
1	B	140	HIS
1	B	170	HIS
1	B	257	HIS
1	B	262	GLN
1	B	291	ASN
1	B	295	GLN
1	B	336	HIS
1	B	344	GLN
1	B	347	GLN
1	B	393	ASN

Continued on next page...

Continued from previous page...

Mol	Chain	Res	Type
1	B	445	HIS

5.3.3 RNA [i](#)

There are no RNA molecules in this entry.

5.4 Non-standard residues in protein, DNA, RNA chains [i](#)

There are no non-standard protein/DNA/RNA residues in this entry.

5.5 Carbohydrates [i](#)

There are no carbohydrates in this entry.

5.6 Ligand geometry [i](#)

Of 15 ligands modelled in this entry, 9 are monoatomic - leaving 6 for Mogul analysis.

In the following table, the Counts columns list the number of bonds (or angles) for which Mogul statistics could be retrieved, the number of bonds (or angles) that are observed in the model and the number of bonds (or angles) that are defined in the chemical component dictionary. The Link column lists molecule types, if any, to which the group is linked. The Z score for a bond length (or angle) is the number of standard deviations the observed value is removed from the expected value. A bond length (or angle) with $|Z| > 2$ is considered an outlier worth inspection. RMSZ is the root-mean-square of all Z scores of the bond lengths (or angles).

Mol	Type	Chain	Res	Link	Bond lengths			Bond angles		
					Counts	RMSZ	$\# Z > 2$	Counts	RMSZ	$\# Z > 2$
3	TYM	A	810	-	33,41,41	1.62	5 (15%)	31,61,61	1.59	5 (16%)
5	GOL	A	813	-	5,5,5	4.63	5 (100%)	5,5,5	5.44	3 (60%)
5	GOL	A	814	-	5,5,5	4.72	5 (100%)	5,5,5	5.43	3 (60%)
5	GOL	B	812	-	5,5,5	4.59	5 (100%)	5,5,5	5.44	3 (60%)
5	GOL	B	815	-	5,5,5	4.60	5 (100%)	5,5,5	5.40	3 (60%)
4	TRP	B	817	-	12,16,16	1.35	1 (8%)	7,22,22	0.69	0

In the following table, the Chirals column lists the number of chiral outliers, the number of chiral centers analysed, the number of these observed in the model and the number defined in the chemical component dictionary. Similar counts are reported in the Torsion and Rings columns. '-' means no outliers of that kind were identified.

Mol	Type	Chain	Res	Link	Chirals	Torsions	Rings
3	TYM	A	810	-	-	0/16/39/39	0/5/5/5
5	GOL	A	813	-	-	0/4/4/4	0/0/0/0
5	GOL	A	814	-	-	0/4/4/4	0/0/0/0
5	GOL	B	812	-	-	0/4/4/4	0/0/0/0
5	GOL	B	815	-	-	0/4/4/4	0/0/0/0
4	TRP	B	817	-	-	0/3/8/8	0/2/2/2

All (26) bond length outliers are listed below:

Mol	Chain	Res	Type	Atoms	Z	Observed(Å)	Ideal(Å)
5	A	814	GOL	C3-C2	-8.19	1.21	1.52
5	B	812	GOL	C3-C2	-7.90	1.22	1.52
5	B	815	GOL	C3-C2	-7.88	1.22	1.52
5	A	813	GOL	C3-C2	-7.84	1.22	1.52
5	A	813	GOL	C1-C2	-3.54	1.38	1.52
5	B	812	GOL	C1-C2	-3.46	1.39	1.52
5	A	814	GOL	C1-C2	-3.42	1.39	1.52
5	A	814	GOL	O2-C2	-3.21	1.33	1.43
5	B	815	GOL	C1-C2	-3.14	1.40	1.52
5	B	815	GOL	O2-C2	-3.08	1.34	1.43
5	A	813	GOL	O2-C2	-2.99	1.34	1.43
5	B	812	GOL	O2-C2	-2.74	1.35	1.43
4	B	817	TRP	CD1-CG	-2.71	1.33	1.38
3	A	810	TYM	C2-N3	2.06	1.35	1.32
5	A	814	GOL	O3-C3	2.39	1.52	1.42
3	A	810	TYM	P-O5'	2.55	1.70	1.59
3	A	810	TYM	CH2-CZ2	2.59	1.42	1.36
5	B	812	GOL	O3-C3	2.66	1.53	1.42
3	A	810	TYM	CZ2-CE2	2.68	1.46	1.41
5	B	815	GOL	O3-C3	2.72	1.54	1.42
5	A	813	GOL	O3-C3	2.83	1.54	1.42
5	A	813	GOL	O1-C1	4.02	1.59	1.42
5	B	812	GOL	O1-C1	4.06	1.59	1.42
5	A	814	GOL	O1-C1	4.10	1.60	1.42
5	B	815	GOL	O1-C1	4.10	1.60	1.42
3	A	810	TYM	P-OPP	6.24	1.73	1.60

All (17) bond angle outliers are listed below:

Mol	Chain	Res	Type	Atoms	Z	Observed(°)	Ideal(°)
3	A	810	TYM	CB-CG-CD1	-5.18	121.57	127.97
3	A	810	TYM	OPP-P-O5'	-3.10	94.77	102.86
3	A	810	TYM	N3-C2-N1	-2.57	126.93	128.89

Continued on next page...

Continued from previous page...

Mol	Chain	Res	Type	Atoms	Z	Observed(°)	Ideal(°)
3	A	810	TYM	O1P-P-O2P	2.34	125.23	112.53
5	B	812	GOL	O1-C1-C2	2.91	124.30	110.18
5	A	813	GOL	O1-C1-C2	2.94	124.46	110.18
5	A	814	GOL	O1-C1-C2	3.03	124.90	110.18
5	B	815	GOL	O1-C1-C2	3.07	125.10	110.18
3	A	810	TYM	C4'-O4'-C1'	3.70	113.78	109.72
5	A	814	GOL	O2-C2-C3	6.96	140.58	108.65
5	B	815	GOL	O2-C2-C3	6.99	140.69	108.65
5	A	813	GOL	O2-C2-C3	7.04	140.96	108.65
5	B	812	GOL	O2-C2-C3	7.05	140.99	108.65
5	B	815	GOL	O3-C3-C2	9.28	155.19	110.18
5	A	814	GOL	O3-C3-C2	9.38	155.67	110.18
5	B	812	GOL	O3-C3-C2	9.38	155.69	110.18
5	A	813	GOL	O3-C3-C2	9.42	155.86	110.18

There are no chirality outliers.

There are no torsion outliers.

There are no ring outliers.

3 monomers are involved in 8 short contacts:

Mol	Chain	Res	Type	Clashes	Symm-Clashes
3	A	810	TYM	5	0
5	A	814	GOL	2	0
5	B	815	GOL	1	0

5.7 Other polymers [i](#)

There are no such residues in this entry.

5.8 Polymer linkage issues [i](#)

There are no chain breaks in this entry.

6 Fit of model and data [i](#)

6.1 Protein, DNA and RNA chains [i](#)

In the following table, the column labelled ‘#RSRZ > 2’ contains the number (and percentage) of RSRZ outliers, followed by percent RSRZ outliers for the chain as percentile scores relative to all X-ray entries and entries of similar resolution. The OWAB column contains the minimum, median, 95th percentile and maximum values of the occupancy-weighted average B-factor per residue. The column labelled ‘Q < 0.9’ lists the number of (and percentage) of residues with an average occupancy less than 0.9.

Mol	Chain	Analysed	<RSRZ>	#RSRZ>2	OWAB(Å ²)	Q<0.9
1	A	388/477 (81%)	0.06	12 (3%) 52 51	30, 47, 75, 107	0
1	B	378/477 (79%)	-0.00	6 (1%) 74 74	28, 43, 69, 105	0
All	All	766/954 (80%)	0.03	18 (2%) 64 63	28, 45, 72, 107	0

All (18) RSRZ outliers are listed below:

Mol	Chain	Res	Type	RSRZ
1	A	91	GLN	4.2
1	B	97	GLY	3.4
1	B	99	ASP	3.2
1	B	470	PHE	3.1
1	A	356	ASN	2.9
1	A	349	LYS	2.7
1	A	92	THR	2.6
1	A	90	VAL	2.6
1	B	102	LYS	2.5
1	A	353	SER	2.5
1	A	107	PHE	2.4
1	B	469	ASP	2.4
1	A	348	THR	2.4
1	A	391	GLY	2.3
1	A	102	LYS	2.2
1	A	469	ASP	2.2
1	A	382	ASP	2.2
1	B	448	ARG	2.1

6.2 Non-standard residues in protein, DNA, RNA chains [i](#)

There are no non-standard protein/DNA/RNA residues in this entry.

6.3 Carbohydrates [i](#)

There are no carbohydrates in this entry.

6.4 Ligands [i](#)

In the following table, the Atoms column lists the number of modelled atoms in the group and the number defined in the chemical component dictionary. LLDF column lists the quality of electron density of the group with respect to its neighbouring residues in protein, DNA or RNA chains. The B-factors column lists the minimum, median, 95th percentile and maximum values of B factors of atoms in the group. The column labelled 'Q< 0.9' lists the number of atoms with occupancy less than 0.9.

Mol	Type	Chain	Res	Atoms	RSCC	RSR	LLDF	B-factors(Å ²)	Q<0.9
5	GOL	B	815	6/6	0.71	0.31	4.93	73,79,79,81	0
3	TYM	A	810	37/37	0.78	0.32	2.90	39,86,94,95	0
5	GOL	A	814	6/6	0.93	0.32	2.06	72,73,73,75	0
4	TRP	B	817	15/15	0.98	0.17	-0.27	33,36,42,42	0
2	CL	B	801	1/1	0.90	0.34	-	84,84,84,84	0
2	CL	A	807	1/1	0.91	0.18	-	73,73,73,73	0
5	GOL	A	813	6/6	0.88	0.19	-	61,62,63,63	0
2	CL	B	806	1/1	0.87	0.24	-	66,66,66,66	0
2	CL	A	804	1/1	0.90	0.20	-	88,88,88,88	0
2	CL	B	808	1/1	0.83	0.14	-	83,83,83,83	0
2	CL	B	803	1/1	0.94	0.08	-	82,82,82,82	0
2	CL	A	805	1/1	0.94	0.12	-	78,78,78,78	0
5	GOL	B	812	6/6	0.87	0.29	-	62,62,62,62	0
2	CL	A	802	1/1	0.94	0.11	-	89,89,89,89	0
2	CL	A	809	1/1	0.93	0.07	-	70,70,70,70	0

6.5 Other polymers [i](#)

There are no such residues in this entry.