



wwPDB X-ray Structure Validation Summary Report ⓘ

Feb 1, 2016 – 12:20 PM GMT

PDB ID : 3QV6
Title : Crystal structure of Leishmania mexicana pyruvate kinase(LmPYK)in complex with acid blue 80.
Authors : Morgan, H.P.; Auld, D.S.; McNae, I.W.; Nowicki, M.W.; Michels, P.A.M.; Fothergill-Gilmore, L.A.; Walkinshaw, M.D.
Deposited on : 2011-02-25
Resolution : 2.85 Å(reported)

This is a wwPDB X-ray Structure Validation Summary Report for a publicly released PDB entry.
We welcome your comments at validation@mail.wwpdb.org
A user guide is available at
<http://wwpdb.org/validation/2016/XrayValidationReportHelp>
with specific help available everywhere you see the ⓘ symbol.

The following versions of software and data (see [references ⓘ](#)) were used in the production of this report:

MolProbity : 4.02b-467
Mogul : 1.7 (RC4), CSD as536be (2015)
Xtriage (Phenix) : 1.9-1692
EDS : rb-20026688
Percentile statistics : 20151230.v01 (using entries in the PDB archive December 30th 2015)
Refmac : 5.8.0135
CCP4 : 6.5.0
Ideal geometry (proteins) : Engh & Huber (2001)
Ideal geometry (DNA, RNA) : Parkinson et al. (1996)
Validation Pipeline (wwPDB-VP) : trunk26865

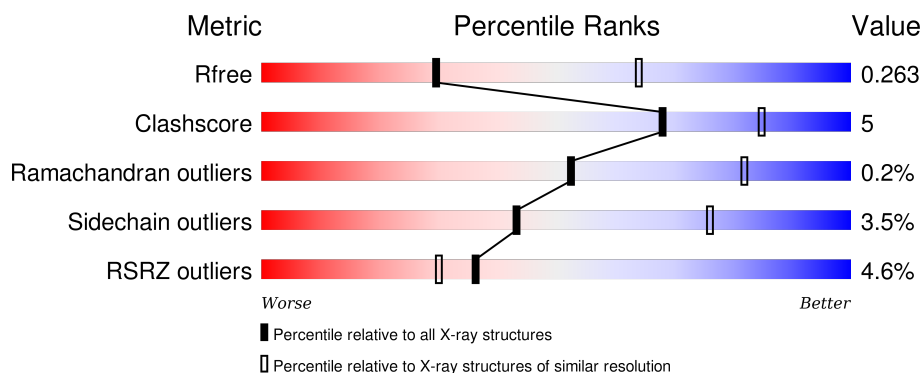
1 Overall quality at a glance

The following experimental techniques were used to determine the structure:

X-RAY DIFFRACTION


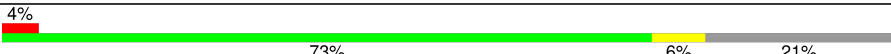
The reported resolution of this entry is 2.85 Å.

Percentile scores (ranging between 0-100) for global validation metrics of the entry are shown in the following graphic. The table shows the number of entries on which the scores are based.



Metric	Whole archive (#Entries)	Similar resolution (#Entries, resolution range(Å))
R_{free}	91344	2228 (2.90-2.82)
Clashscore	102246	2499 (2.90-2.82)
Ramachandran outliers	100387	2439 (2.90-2.82)
Sidechain outliers	100360	2442 (2.90-2.82)
RSRZ outliers	91569	2236 (2.90-2.82)

The table below summarises the geometric issues observed across the polymeric chains and their fit to the electron density. The red, orange, yellow and green segments on the lower bar indicate the fraction of residues that contain outliers for ≥ 3 , 2, 1 and 0 types of geometric quality criteria. A grey segment represents the fraction of residues that are not modelled. The numeric value for each fraction is indicated below the corresponding segment, with a dot representing fractions $\leq 5\%$. The upper red bar (where present) indicates the fraction of residues that have poor fit to the electron density. The numeric value is given above the bar.

Mol	Chain	Length	Quality of chain
1	A	499	
1	D	499	

2 Entry composition [i](#)

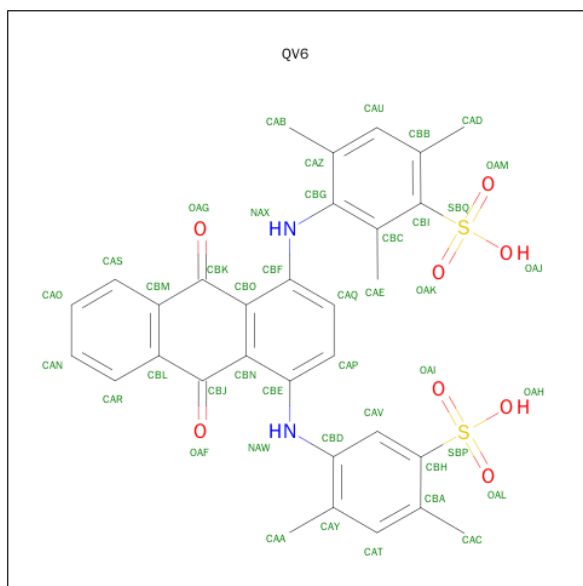
There are 5 unique types of molecules in this entry. The entry contains 6952 atoms, of which 0 are hydrogens and 0 are deuteriums.

In the tables below, the ZeroOcc column contains the number of atoms modelled with zero occupancy, the AltConf column contains the number of residues with at least one atom in alternate conformation and the Trace column contains the number of residues modelled with at most 2 atoms.

- Molecule 1 is a protein called Pyruvate kinase.

Mol	Chain	Residues	Atoms					ZeroOcc	AltConf	Trace
1	A	493	Total	C	N	O	S	0	0	0
			3760	2343	661	730	26			
1	D	394	Total	C	N	O	S	0	0	0
			2985	1862	530	571	22			

- Molecule 2 is 3-({4-[(2,4-DIMETHYL-5-SULFOPHENYL)AMINO]-9,10-DIOXO-9,10-DIHYDROANTHRACEN-1-YL}AMINO)-2,4,6-TRIMETHYLBENZENESULFONIC ACID (three-letter code: QV6) (formula: C₃₁H₂₈N₂O₈S₂).

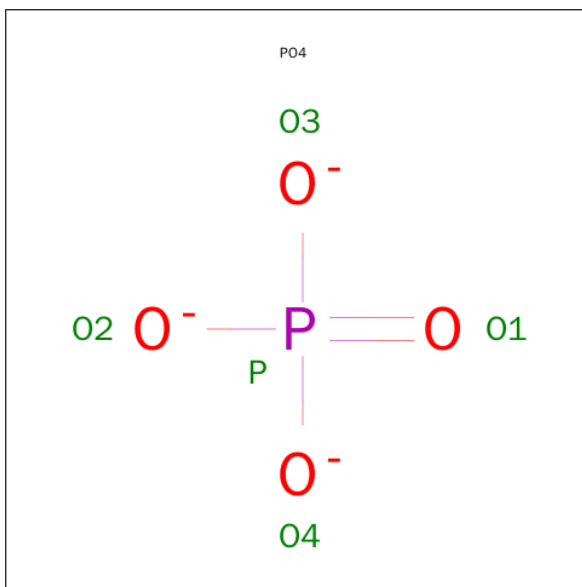


Mol	Chain	Residues	Atoms					ZeroOcc	AltConf
2	A	1	Total	C	N	O	S	0	0
			43	31	2	8	2		
2	A	1	Total	C	N	O	S	0	0
			43	31	2	8	2		

- Molecule 3 is POTASSIUM ION (three-letter code: K) (formula: K).

Mol	Chain	Residues	Atoms	ZeroOcc	AltConf
3	A	2	Total K 2 2	0	0
3	D	2	Total K 2 2	0	0

- Molecule 4 is PHOSPHATE ION (three-letter code: PO4) (formula: O₄P).



Mol	Chain	Residues	Atoms	ZeroOcc	AltConf
4	A	1	Total O P 5 4 1	0	0
4	D	1	Total O P 5 4 1	0	0

- Molecule 5 is water.

Mol	Chain	Residues	Atoms	ZeroOcc	AltConf
5	A	57	Total O 57 57	0	0
5	D	50	Total O 50 50	0	0

These plots are drawn for all protein, RNA and DNA chains in the entry. The first graphic for a chain summarises the proportions of errors displayed in the second graphic. The second graphic shows the sequence view annotated by issues in geometry and electron density. Residues are color-coded according to the number of geometric quality criteria for which they contain at least one outlier: green = 0, yellow = 1, orange = 2 and red = 3 or more. A red dot above a residue indicates a poor fit to the electron density ($\text{RSRZ} > 2$). Stretches of 2 or more consecutive residues without any outlier are shown as a green connector. Residues present in the sample, but not in the model, are shown in grey.

Chain A:

4% 89% 9%

Chain D:

Amino Acid	Frequency (%)
Met	4%
S1	
N6	
L9	
N17	
I24	
I27	
L40	
V47	
V67	
A79	
P87	
GLU	
I1E	
ARG	
THR	
GLY	
GLN	
PHE	
VAL	
GLY	
ASP	
ALA	
VAL	
GLY	
ALA	
THR	
CYS	
TYR	
VAL	
THR	
THR	
ASP	
PRO	
ALA	
PHE	
ALA	
ASP	
LYS	
GLY	
THR	
LYS	
ASP	
PHE	
THR	
ASP	
LEU	
ASP	
GLY	
LEU	
I1E	
LEU	
GLN	
VAL	
GLN	
SER	
HIS	
GLU	
GLY	
GLU	
GLN	
THR	
LEU	
GLU	
CYS	
THR	
VAL	
THR	
ASN	
SER	
HIS	
I1E	
VAL	
ASP	
ARG	
GLY	
VAL	
ASN	
LEU	
PRO	
GLY	
CYS	
ASP	
VAL	
ASP	
L186	
S211	
F212	
I236	
C237	
K238	
H242	
Q246	
S255	
R262	
G263	
D264	
E268	
V274	
T296	
D325	
P328	
I366	
A379	
V380	
C381	
S382	
S383	
A384	
V385	
E390	
V398	
L399	
L408	
V409	
A410	
K411	
V412	
L418	
V419	
Q426	
R429	
Q435	
V443	

4 Data and refinement statistics

Property	Value	Source
Space group	C 1 2 1	Depositor
Cell constants a, b, c, α , β , γ	130.05Å 127.50Å 118.17Å 90.00° 116.19° 90.00°	Depositor
Resolution (Å)	86.08 – 2.85 86.08 – 2.85	Depositor EDS
% Data completeness (in resolution range)	100.0 (86.08-2.85) 97.7 (86.08-2.85)	Depositor EDS
R_{merge}	0.08	Depositor
R_{sym}	0.09	Depositor
$\langle I/\sigma(I) \rangle$ ¹	2.60 (at 2.86Å)	Xtriage
Refinement program	REFMAC 5.5.0109	Depositor
R, R_{free}	0.235 , 0.267 0.234 , 0.263	Depositor DCC
R_{free} test set	1979 reflections (5.28%)	DCC
Wilson B-factor (Å ²)	67.2	Xtriage
Anisotropy	0.123	Xtriage
Bulk solvent k_{sol} (e/Å ³), B_{sol} (Å ²)	0.31 , 29.4	EDS
Estimated twinning fraction	No twinning to report.	Xtriage
L-test for twinning ²	$\langle L \rangle = 0.51$, $\langle L^2 \rangle = 0.34$	Xtriage
Outliers	0 of 39444 reflections	Xtriage
F_o, F_c correlation	0.91	EDS
Total number of atoms	6952	wwPDB-VP
Average B, all atoms (Å ²)	72.0	wwPDB-VP

Xtriage's analysis on translational NCS is as follows: *The largest off-origin peak in the Patterson function is 4.25% of the height of the origin peak. No significant pseudotranslation is detected.*

¹Intensities estimated from amplitudes.

²Theoretical values of $\langle |L| \rangle$, $\langle L^2 \rangle$ for acentric reflections are 0.5, 0.375 respectively for untwinned datasets, and 0.333, 0.2 for perfectly twinned datasets.

5 Model quality [i](#)

5.1 Standard geometry [i](#)

Bond lengths and bond angles in the following residue types are not validated in this section: PO4, QV6, K

The Z score for a bond length (or angle) is the number of standard deviations the observed value is removed from the expected value. A bond length (or angle) with $|Z| > 5$ is considered an outlier worth inspection. RMSZ is the root-mean-square of all Z scores of the bond lengths (or angles).

Mol	Chain	Bond lengths		Bond angles	
		RMSZ	$\# Z > 5$	RMSZ	$\# Z > 5$
1	A	0.32	0/3815	0.47	0/5165
1	D	0.32	0/3025	0.45	0/4090
All	All	0.32	0/6840	0.46	0/9255

There are no bond length outliers.

There are no bond angle outliers.

There are no chirality outliers.

There are no planarity outliers.

5.2 Too-close contacts [i](#)

In the following table, the Non-H and H(model) columns list the number of non-hydrogen atoms and hydrogen atoms in the chain respectively. The H(added) column lists the number of hydrogen atoms added and optimized by MolProbity. The Clashes column lists the number of clashes within the asymmetric unit, whereas Symm-Clashes lists symmetry related clashes.

Mol	Chain	Non-H	H(model)	H(added)	Clashes	Symm-Clashes
1	A	3760	0	3756	30	0
1	D	2985	0	3017	15	0
2	A	86	0	56	19	0
3	A	2	0	0	0	0
3	D	2	0	0	0	0
4	A	5	0	0	0	0
4	D	5	0	0	0	0
5	A	57	0	0	2	0
5	D	50	0	0	0	0
All	All	6952	0	6829	64	0

The all-atom clashscore is defined as the number of clashes found per 1000 atoms (including

hydrogen atoms). The all-atom clashscore for this structure is 5.

The worst 5 of 64 close contacts within the same asymmetric unit are listed below, sorted by their clash magnitude.

Atom-1	Atom-2	Interatomic distance (Å)	Clash overlap (Å)
2:A:499:QV6:OAJ	2:A:499:QV6:HAD	1.54	1.03
2:A:499:QV6:HOAJ	2:A:499:QV6:HAD	1.27	0.90
2:A:499:QV6:CBF	2:A:499:QV6:HAB	2.03	0.87
5:A:548:HOH:O	1:D:1:SER:HA	1.74	0.86
2:A:500:QV6:OAJ	2:A:500:QV6:HAD	1.81	0.79

There are no symmetry-related clashes.

5.3 Torsion angles [i](#)

5.3.1 Protein backbone [i](#)

In the following table, the Percentiles column shows the percent Ramachandran outliers of the chain as a percentile score with respect to all X-ray entries followed by that with respect to entries of similar resolution.

The Analysed column shows the number of residues for which the backbone conformation was analysed, and the total number of residues.

Mol	Chain	Analysed	Favoured	Allowed	Outliers	Percentiles	
1	A	489/499 (98%)	474 (97%)	14 (3%)	1 (0%)	52	82
1	D	388/499 (78%)	377 (97%)	10 (3%)	1 (0%)	46	76
All	All	877/998 (88%)	851 (97%)	24 (3%)	2 (0%)	52	82

All (2) Ramachandran outliers are listed below:

Mol	Chain	Res	Type
1	A	296	THR
1	D	296	THR

5.3.2 Protein sidechains [i](#)

In the following table, the Percentiles column shows the percent sidechain outliers of the chain as a percentile score with respect to all X-ray entries followed by that with respect to entries of similar resolution.

The Analysed column shows the number of residues for which the sidechain conformation was

analysed, and the total number of residues.

Mol	Chain	Analysed	Rotameric	Outliers	Percentiles	
1	A	412/417 (99%)	396 (96%)	16 (4%)	39	73
1	D	326/417 (78%)	316 (97%)	10 (3%)	47	79
All	All	738/834 (88%)	712 (96%)	26 (4%)	43	76

5 of 26 residues with a non-rotameric sidechain are listed below:

Mol	Chain	Res	Type
1	A	390	GLU
1	A	479	ILE
1	D	479	ILE
1	A	426	GLN
1	A	435	GLN

Some sidechains can be flipped to improve hydrogen bonding and reduce clashes. 5 of 12 such sidechains are listed below:

Mol	Chain	Res	Type
1	A	286	ASN
1	A	305	ASN
1	D	242	HIS
1	A	247	ASN
1	D	17	ASN

5.3.3 RNA ⓘ

There are no RNA molecules in this entry.

5.4 Non-standard residues in protein, DNA, RNA chains ⓘ

There are no non-standard protein/DNA/RNA residues in this entry.

5.5 Carbohydrates ⓘ

There are no carbohydrates in this entry.

5.6 Ligand geometry ⓘ

Of 8 ligands modelled in this entry, 4 are monoatomic - leaving 4 for Mogul analysis.

In the following table, the Counts columns list the number of bonds (or angles) for which Mogul statistics could be retrieved, the number of bonds (or angles) that are observed in the model and the number of bonds (or angles) that are defined in the chemical component dictionary. The Link column lists molecule types, if any, to which the group is linked. The Z score for a bond length (or angle) is the number of standard deviations the observed value is removed from the expected value. A bond length (or angle) with $|Z| > 2$ is considered an outlier worth inspection. RMSZ is the root-mean-square of all Z scores of the bond lengths (or angles).

Mol	Type	Chain	Res	Link	Bond lengths			Bond angles		
					Counts	RMSZ	$\# Z > 2$	Counts	RMSZ	$\# Z > 2$
2	QV6	A	499	-	47,47,47	1.45	7 (14%)	69,74,74	1.22	5 (7%)
2	QV6	A	500	-	47,47,47	1.29	4 (8%)	69,74,74	1.23	5 (7%)
4	PO4	A	503	-	4,4,4	0.49	0	6,6,6	0.27	0
4	PO4	D	501	-	4,4,4	0.46	0	6,6,6	0.27	0

In the following table, the Chirals column lists the number of chiral outliers, the number of chiral centers analysed, the number of these observed in the model and the number defined in the chemical component dictionary. Similar counts are reported in the Torsion and Rings columns. '-' means no outliers of that kind were identified.

Mol	Type	Chain	Res	Link	Chirals	Torsions	Rings
2	QV6	A	499	-	-	0/20/36/36	0/5/5/5
2	QV6	A	500	-	-	0/20/36/36	0/5/5/5
4	PO4	A	503	-	-	0/0/0/0	0/0/0/0
4	PO4	D	501	-	-	0/0/0/0	0/0/0/0

The worst 5 of 11 bond length outliers are listed below:

Mol	Chain	Res	Type	Atoms	Z	Observed(Å)	Ideal(Å)
2	A	499	QV6	CBL-CBJ	-4.11	1.39	1.48
2	A	499	QV6	CBM-CBK	-4.06	1.39	1.48
2	A	500	QV6	CBM-CBK	-3.83	1.40	1.48
2	A	500	QV6	CBL-CBJ	-3.73	1.40	1.48
2	A	499	QV6	CBO-CBK	-3.25	1.39	1.47

The worst 5 of 10 bond angle outliers are listed below:

Mol	Chain	Res	Type	Atoms	Z	Observed(°)	Ideal(°)
2	A	499	QV6	CAD-CBB-CBI	-3.17	120.25	125.25
2	A	499	QV6	CAC-CBA-CBH	-3.13	120.84	124.09
2	A	500	QV6	CAT-CAY-CBD	2.15	120.19	118.22
2	A	499	QV6	OAI-SBP-CBH	2.33	108.85	106.17
2	A	500	QV6	OAL-SBP-CBH	2.70	109.28	106.17

There are no chirality outliers.

There are no torsion outliers.

There are no ring outliers.

2 monomers are involved in 19 short contacts:

Mol	Chain	Res	Type	Clashes	Symm-Clashes
2	A	499	QV6	15	0
2	A	500	QV6	4	0

5.7 Other polymers [i](#)

There are no such residues in this entry.

5.8 Polymer linkage issues [i](#)

There are no chain breaks in this entry.

6 Fit of model and data [i](#)

6.1 Protein, DNA and RNA chains [i](#)

In the following table, the column labelled ‘#RSRZ> 2’ contains the number (and percentage) of RSRZ outliers, followed by percent RSRZ outliers for the chain as percentile scores relative to all X-ray entries and entries of similar resolution. The OWAB column contains the minimum, median, 95th percentile and maximum values of the occupancy-weighted average B-factor per residue. The column labelled ‘Q< 0.9’ lists the number of (and percentage) of residues with an average occupancy less than 0.9.

Mol	Chain	Analysed	<RSRZ>	#RSRZ>2	OWAB(Å ²)	Q<0.9
1	A	493/499 (98%)	0.65	19 (3%) 43 36	56, 70, 92, 105	0
1	D	394/499 (78%)	0.67	22 (5%) 28 22	58, 71, 94, 98	0
All	All	887/998 (88%)	0.66	41 (4%) 36 30	56, 71, 94, 105	0

The worst 5 of 41 RSRZ outliers are listed below:

Mol	Chain	Res	Type	RSRZ
1	D	491	GLN	3.4
1	D	212	PHE	3.3
1	D	419	VAL	3.0
1	D	457	VAL	2.9
1	A	495	LEU	2.8

6.2 Non-standard residues in protein, DNA, RNA chains [i](#)

There are no non-standard protein/DNA/RNA residues in this entry.

6.3 Carbohydrates [i](#)

There are no carbohydrates in this entry.

6.4 Ligands [i](#)

In the following table, the Atoms column lists the number of modelled atoms in the group and the number defined in the chemical component dictionary. LLDF column lists the quality of electron density of the group with respect to its neighbouring residues in protein, DNA or RNA chains. The B-factors column lists the minimum, median, 95th percentile and maximum values of B factors of atoms in the group. The column labelled ‘Q< 0.9’ lists the number of atoms with occupancy less than 0.9.

Mol	Type	Chain	Res	Atoms	RSCC	RSR	LLDF	B-factors(\AA^2)	Q<0.9
2	QV6	A	500	43/43	0.96	0.26	-0.24	60,69,72,73	0
4	PO4	A	503	5/5	0.91	0.17	-0.87	113,113,113,114	0
4	PO4	D	501	5/5	0.91	0.16	-0.97	121,121,121,121	0
3	K	A	501	1/1	0.65	0.15	-1.61	100,100,100,100	0
3	K	D	499	1/1	0.82	0.16	-3.03	98,98,98,98	0
2	QV6	A	499	43/43	0.94	0.20	-	71,71,73,73	43
3	K	A	502	1/1	0.82	0.12	-	81,81,81,81	0
3	K	D	500	1/1	0.93	0.09	-	83,83,83,83	0

6.5 Other polymers [i](#)

There are no such residues in this entry.