



wwPDB X-ray Structure Validation Summary Report ⓘ

Feb 1, 2016 – 12:23 PM GMT

PDB ID : 3R0H
Title : Structure of INAD PDZ45 in complex with NG2 peptide
Authors : Wei, Z.; Liu, W.; Zhang, M.
Deposited on : 2011-03-08
Resolution : 2.60 Å(reported)

This is a wwPDB X-ray Structure Validation Summary Report for a publicly released PDB entry.
We welcome your comments at validation@mail.wwpdb.org
A user guide is available at
<http://wwpdb.org/validation/2016/XrayValidationReportHelp>
with specific help available everywhere you see the ⓘ symbol.

The following versions of software and data (see [references ⓘ](#)) were used in the production of this report:

MolProbity : 4.02b-467
Mogul : 1.7 (RC4), CSD as536be (2015)
Xtriage (Phenix) : 1.9-1692
EDS : rb-20026688
Percentile statistics : 20151230.v01 (using entries in the PDB archive December 30th 2015)
Refmac : 5.8.0135
CCP4 : 6.5.0
Ideal geometry (proteins) : Engh & Huber (2001)
Ideal geometry (DNA, RNA) : Parkinson et al. (1996)
Validation Pipeline (wwPDB-VP) : trunk26865

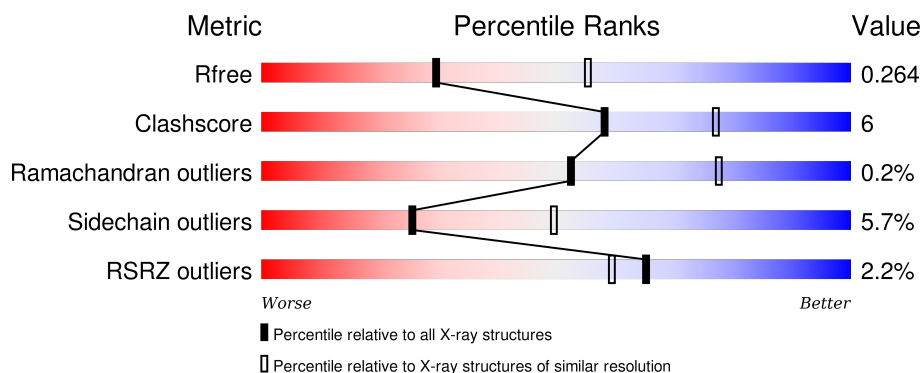
1 Overall quality at a glance

The following experimental techniques were used to determine the structure:

X-RAY DIFFRACTION

The reported resolution of this entry is 2.60 Å.

Percentile scores (ranging between 0-100) for global validation metrics of the entry are shown in the following graphic. The table shows the number of entries on which the scores are based.



Metric	Whole archive (#Entries)	Similar resolution (#Entries, resolution range(Å))
R_{free}	91344	2328 (2.60-2.60)
Clashscore	102246	2679 (2.60-2.60)
Ramachandran outliers	100387	2635 (2.60-2.60)
Sidechain outliers	100360	2635 (2.60-2.60)
RSRZ outliers	91569	2334 (2.60-2.60)

The table below summarises the geometric issues observed across the polymeric chains and their fit to the electron density. The red, orange, yellow and green segments on the lower bar indicate the fraction of residues that contain outliers for ≥ 3 , 2, 1 and 0 types of geometric quality criteria. A grey segment represents the fraction of residues that are not modelled. The numeric value for each fraction is indicated below the corresponding segment, with a dot representing fractions $\leq 5\%$. The upper red bar (where present) indicates the fraction of residues that have poor fit to the electron density. The numeric value is given above the bar.

Mol	Chain	Length	Quality of chain
1	A	206	<div> <div style="width: 100%; height: 10px; background: linear-gradient(to right, red 1%, orange 1%, yellow 13%, green 82%, grey 5%);"></div> <div style="display: flex; justify-content: space-between; width: 100%;"> 100% 82% 13% • • </div> </div>
1	B	206	<div> <div style="width: 100%; height: 10px; background: linear-gradient(to right, red 2%, orange 1%, yellow 13%, green 81%, grey 5%);"></div> <div style="display: flex; justify-content: space-between; width: 100%;"> 100% 81% 13% • 5% </div> </div>
1	C	206	<div> <div style="width: 100%; height: 10px; background: linear-gradient(to right, red 1%, orange 1%, yellow 16%, green 78%, grey 5%);"></div> <div style="display: flex; justify-content: space-between; width: 100%;"> 100% 78% 16% • • </div> </div>
1	D	206	<div> <div style="width: 100%; height: 10px; background: linear-gradient(to right, red 1%, orange 1%, yellow 10%, green 84%, grey 5%);"></div> <div style="display: flex; justify-content: space-between; width: 100%;"> 100% 84% 10% • • </div> </div>
1	E	206	<div> <div style="width: 100%; height: 10px; background: linear-gradient(to right, red 2%, orange 1%, yellow 14%, green 82%, grey 5%);"></div> <div style="display: flex; justify-content: space-between; width: 100%;"> 100% 82% 14% • </div> </div>

Continued on next page...

Continued from previous page...

Mol	Chain	Length	Quality of chain
1	F	206	
1	G	206	
1	H	206	
2	a	9	
2	b	9	
2	c	9	
2	d	9	
2	e	9	
2	f	9	
2	g	9	
2	h	9	

The following table lists non-polymeric compounds, carbohydrate monomers and non-standard residues in protein, DNA, RNA chains that are outliers for geometric or electron-density-fit criteria:

Mol	Type	Chain	Res	Chirality	Geometry	Clashes	Electron density
3	DTT	B	3	-	-	-	X
3	DTT	D	1	-	-	X	X
3	DTT	D	4	-	-	-	X
4	DTV	B	2	-	-	-	X
5	SO4	H	1	-	-	-	X

2 Entry composition

There are 6 unique types of molecules in this entry. The entry contains 12877 atoms, of which 0 are hydrogens and 0 are deuteriums.

In the tables below, the ZeroOcc column contains the number of atoms modelled with zero occupancy, the AltConf column contains the number of residues with at least one atom in alternate conformation and the Trace column contains the number of residues modelled with at most 2 atoms.

- Molecule 1 is a protein called Inactivation-no-after-potential D protein.

Mol	Chain	Residues	Atoms					ZeroOcc	AltConf	Trace
1	A	198	Total	C	N	O	S	0	0	0
			1516	966	257	284	9			
1	B	196	Total	C	N	O	S	0	0	0
			1489	947	252	281	9			
1	C	198	Total	C	N	O	S	0	0	0
			1521	970	259	283	9			
1	D	199	Total	C	N	O	S	0	0	0
			1518	967	258	284	9			
1	E	199	Total	C	N	O	S	0	0	0
			1516	966	258	283	9			
1	F	198	Total	C	N	O	S	0	0	0
			1513	963	257	284	9			
1	G	193	Total	C	N	O	S	0	0	0
			1480	944	253	274	9			
1	H	193	Total	C	N	O	S	0	0	0
			1472	939	251	273	9			

There are 32 discrepancies between the modelled and reference sequences:

Chain	Residue	Modelled	Actual	Comment	Reference
A	469	GLY	-	EXPRESSION TAG	UNP Q24008
A	470	PRO	-	EXPRESSION TAG	UNP Q24008
A	471	GLY	-	EXPRESSION TAG	UNP Q24008
A	472	SER	-	EXPRESSION TAG	UNP Q24008
B	469	GLY	-	EXPRESSION TAG	UNP Q24008
B	470	PRO	-	EXPRESSION TAG	UNP Q24008
B	471	GLY	-	EXPRESSION TAG	UNP Q24008
B	472	SER	-	EXPRESSION TAG	UNP Q24008
C	469	GLY	-	EXPRESSION TAG	UNP Q24008
C	470	PRO	-	EXPRESSION TAG	UNP Q24008
C	471	GLY	-	EXPRESSION TAG	UNP Q24008
C	472	SER	-	EXPRESSION TAG	UNP Q24008
D	469	GLY	-	EXPRESSION TAG	UNP Q24008

Continued on next page...

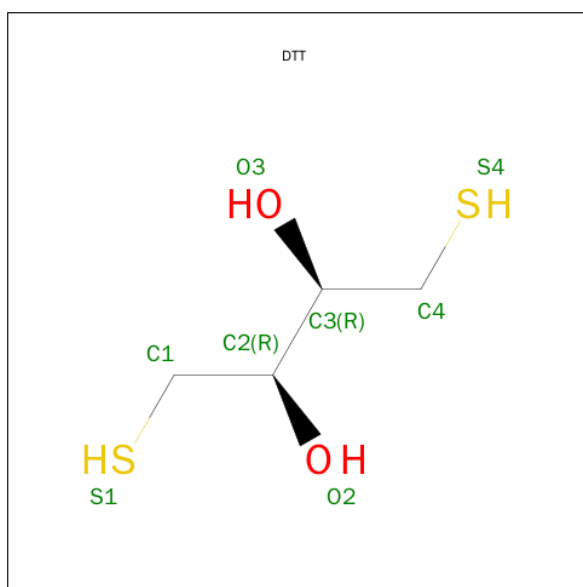
Continued from previous page...

Chain	Residue	Modelled	Actual	Comment	Reference
D	470	PRO	-	EXPRESSION TAG	UNP Q24008
D	471	GLY	-	EXPRESSION TAG	UNP Q24008
D	472	SER	-	EXPRESSION TAG	UNP Q24008
E	469	GLY	-	EXPRESSION TAG	UNP Q24008
E	470	PRO	-	EXPRESSION TAG	UNP Q24008
E	471	GLY	-	EXPRESSION TAG	UNP Q24008
E	472	SER	-	EXPRESSION TAG	UNP Q24008
F	469	GLY	-	EXPRESSION TAG	UNP Q24008
F	470	PRO	-	EXPRESSION TAG	UNP Q24008
F	471	GLY	-	EXPRESSION TAG	UNP Q24008
F	472	SER	-	EXPRESSION TAG	UNP Q24008
G	469	GLY	-	EXPRESSION TAG	UNP Q24008
G	470	PRO	-	EXPRESSION TAG	UNP Q24008
G	471	GLY	-	EXPRESSION TAG	UNP Q24008
G	472	SER	-	EXPRESSION TAG	UNP Q24008
H	469	GLY	-	EXPRESSION TAG	UNP Q24008
H	470	PRO	-	EXPRESSION TAG	UNP Q24008
H	471	GLY	-	EXPRESSION TAG	UNP Q24008
H	472	SER	-	EXPRESSION TAG	UNP Q24008

- Molecule 2 is a protein called NG2.

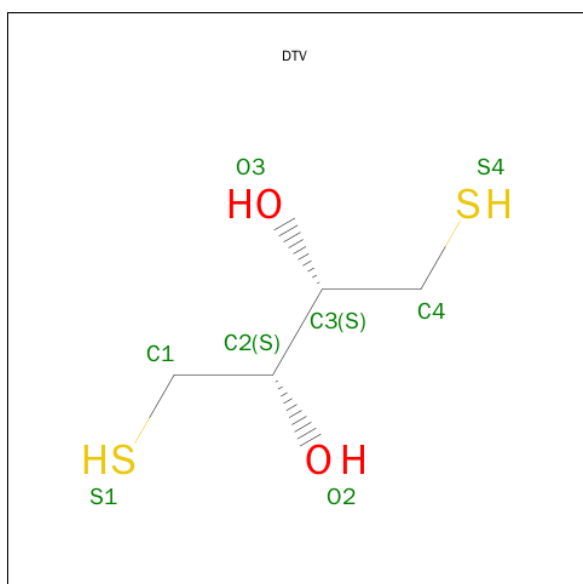
Mol	Chain	Residues	Atoms				ZeroOcc	AltConf	Trace
2	a	9	Total	C	N	O	0	0	0
			79	51	15	13			
2	b	9	Total	C	N	O	0	0	0
			79	51	15	13			
2	c	9	Total	C	N	O	0	0	0
			79	51	15	13			
2	d	9	Total	C	N	O	0	0	0
			79	51	15	13			
2	e	9	Total	C	N	O	0	0	0
			79	51	15	13			
2	f	9	Total	C	N	O	0	0	0
			79	51	15	13			
2	g	9	Total	C	N	O	0	0	0
			79	51	15	13			
2	h	9	Total	C	N	O	0	0	0
			79	51	15	13			

- Molecule 3 is 2,3-DIHYDROXY-1,4-DITHIOBUTANE (three-letter code: DTT) (formula: C₄H₁₀O₂S₂).



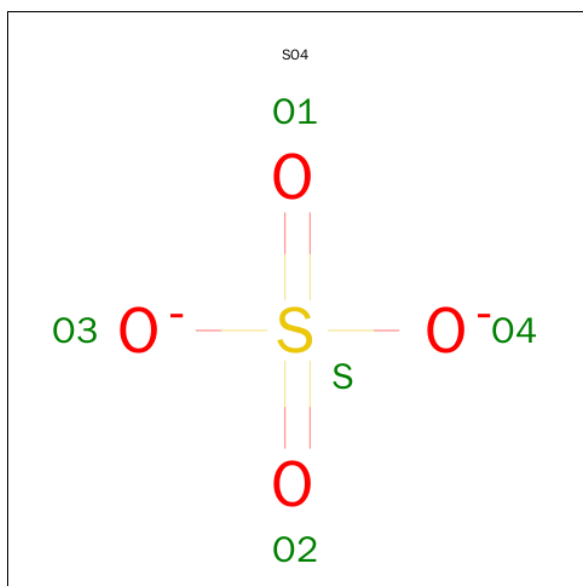
Mol	Chain	Residues	Atoms				ZeroOcc	AltConf
3	A	1	Total	C	O	S	0	0
			8	4	2	2		
3	B	1	Total	C	O	S	0	0
			8	4	2	2		
3	D	1	Total	C	O	S	0	0
			8	4	2	2		
3	D	1	Total	C	O	S	0	0
			8	4	2	2		

- Molecule 4 is (2S,3S)-1,4-DIMERCAPTOBUTANE-2,3-DIOL (three-letter code: DTV) (formula: $C_4H_{10}O_2S_2$).



Mol	Chain	Residues	Atoms				ZeroOcc	AltConf
4	B	1	Total	C	O	S	0	0
			8	4	2	2		

- Molecule 5 is SULFATE ION (three-letter code: SO4) (formula: O₄S).



Mol	Chain	Residues	Atoms			ZeroOcc	AltConf
5	C	1	Total	O	S	0	0
			5	4	1		
5	G	1	Total	O	S	0	0
			5	4	1		
5	G	1	Total	O	S	0	0
			5	4	1		
5	H	1	Total	O	S	0	0
			5	4	1		
5	H	1	Total	O	S	0	0
			5	4	1		

- Molecule 6 is water.

Mol	Chain	Residues	Atoms		ZeroOcc	AltConf
6	A	10	Total	O	0	0
			10	10		
6	a	1	Total	O	0	0
			1	1		
6	B	12	Total	O	0	0
			12	12		
6	b	1	Total	O	0	0
			1	1		

Continued on next page...

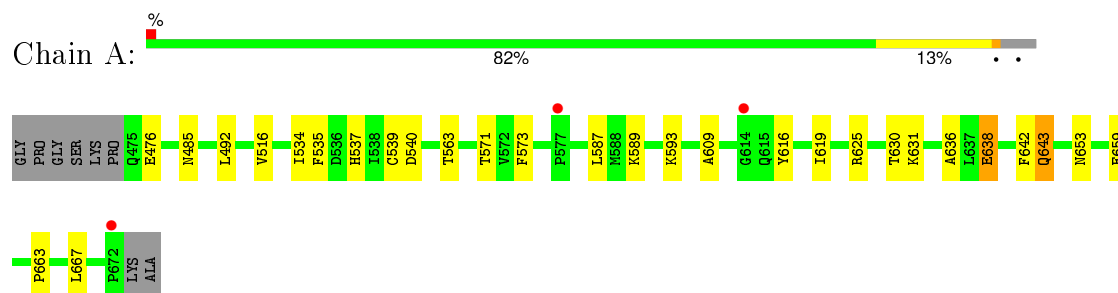
Continued from previous page...

Mol	Chain	Residues	Atoms		ZeroOcc	AltConf
6	C	31	Total 31	O 31	0	0
6	c	1	Total 1	O 1	0	0
6	D	31	Total 31	O 31	0	0
6	d	2	Total 2	O 2	0	0
6	E	24	Total 24	O 24	0	0
6	e	1	Total 1	O 1	0	0
6	F	11	Total 11	O 11	0	0
6	G	15	Total 15	O 15	0	0
6	g	1	Total 1	O 1	0	0
6	H	13	Total 13	O 13	0	0
6	h	1	Total 1	O 1	0	0

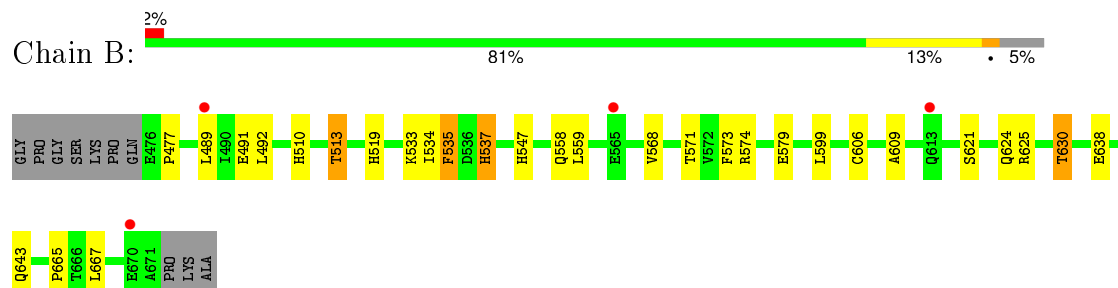
3 Residue-property plots [i](#)

These plots are drawn for all protein, RNA and DNA chains in the entry. The first graphic for a chain summarises the proportions of errors displayed in the second graphic. The second graphic shows the sequence view annotated by issues in geometry and electron density. Residues are color-coded according to the number of geometric quality criteria for which they contain at least one outlier: green = 0, yellow = 1, orange = 2 and red = 3 or more. A red dot above a residue indicates a poor fit to the electron density ($\text{RSRZ} > 2$). Stretches of 2 or more consecutive residues without any outlier are shown as a green connector. Residues present in the sample, but not in the model, are shown in grey.

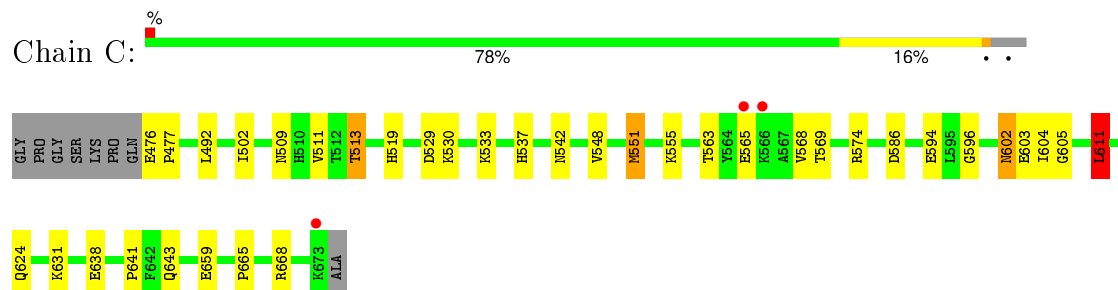
- Molecule 1: Inactivation-no-after-potential D protein



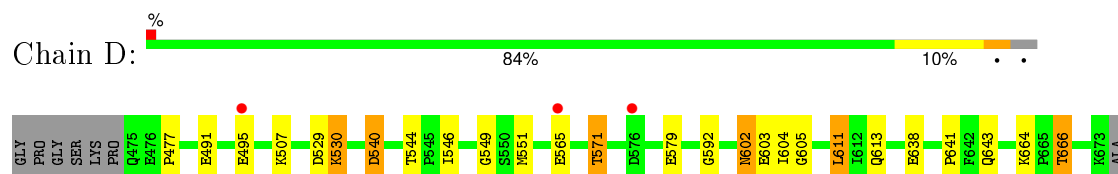
- Molecule 1: Inactivation-no-after-potential D protein



- Molecule 1: Inactivation-no-after-potential D protein



- Molecule 1: Inactivation-no-after-potential D protein



- Chain b: 100%

There are no outlier residues recorded for this chain.

- Molecule 2: NG2

Chain c:  100%

There are no outlier residues recorded for this chain.

- Molecule 2: NG2

Chain d:  100%

There are no outlier residues recorded for this chain.

- Molecule 2: NG2

Chain e:  100%

There are no outlier residues recorded for this chain.

- Molecule 2: NG2

Chain f:  100%

There are no outlier residues recorded for this chain.

- Molecule 2: NG2

Chain g:  100%

There are no outlier residues recorded for this chain.

- Molecule 2: NG2

Chain h:  89% 11%



4 Data and refinement statistics

Property	Value	Source
Space group	P 21 21 21	Depositor
Cell constants a, b, c, α , β , γ	73.08Å 134.99Å 215.99Å 90.00° 90.00° 90.00°	Depositor
Resolution (Å)	29.53 – 2.60 29.53 – 2.60	Depositor EDS
% Data completeness (in resolution range)	99.2 (29.53-2.60) 99.2 (29.53-2.60)	Depositor EDS
R_{merge}	0.08	Depositor
R_{sym}	(Not available)	Depositor
$\langle I/\sigma(I) \rangle$ ¹	3.24 (at 2.61Å)	Xtriage
Refinement program	REFMAC 5.5.0072	Depositor
R, R_{free}	0.198 , 0.263 0.203 , 0.264	Depositor DCC
R_{free} test set	3349 reflections (5.34%)	DCC
Wilson B-factor (Å ²)	46.8	Xtriage
Anisotropy	0.098	Xtriage
Bulk solvent k_{sol} (e/Å ³), B_{sol} (Å ²)	0.34 , 48.8	EDS
Estimated twinning fraction	No twinning to report.	Xtriage
L-test for twinning ²	$\langle L \rangle = 0.47$, $\langle L^2 \rangle = 0.30$	Xtriage
Outliers	2 of 66009 reflections (0.003%)	Xtriage
F_o, F_c correlation	0.94	EDS
Total number of atoms	12877	wwPDB-VP
Average B, all atoms (Å ²)	49.0	wwPDB-VP

Xtriage's analysis on translational NCS is as follows: *The analyses of the Patterson function reveals a significant off-origin peak that is 33.93 % of the origin peak, indicating pseudo translational symmetry. The chance of finding a peak of this or larger height randomly in a structure without pseudo translational symmetry is equal to 7.3967e-04. The detected translational NCS is most likely also responsible for the elevated intensity ratio.*

¹ Intensities estimated from amplitudes.

² Theoretical values of $\langle |L| \rangle$, $\langle L^2 \rangle$ for acentric reflections are 0.5, 0.375 respectively for untwinned datasets, and 0.333, 0.2 for perfectly twinned datasets.

5 Model quality [i](#)

5.1 Standard geometry [i](#)

Bond lengths and bond angles in the following residue types are not validated in this section: DTT, DTV, SO4

The Z score for a bond length (or angle) is the number of standard deviations the observed value is removed from the expected value. A bond length (or angle) with $|Z| > 5$ is considered an outlier worth inspection. RMSZ is the root-mean-square of all Z scores of the bond lengths (or angles).

Mol	Chain	Bond lengths		Bond angles	
		RMSZ	# Z >5	RMSZ	# Z >5
1	A	0.47	0/1545	0.62	0/2092
1	B	0.47	0/1517	0.63	0/2058
1	C	0.51	0/1550	0.67	1/2097 (0.0%)
1	D	0.52	0/1547	0.67	1/2096 (0.0%)
1	E	0.50	0/1546	0.65	2/2096 (0.1%)
1	F	0.47	0/1542	0.63	1/2090 (0.0%)
1	G	0.49	0/1507	0.63	0/2038
1	H	0.47	0/1499	0.63	0/2029
2	a	0.58	0/81	0.68	0/108
2	b	0.51	0/81	0.64	0/108
2	c	0.57	0/81	0.65	0/108
2	d	0.55	0/81	0.62	0/108
2	e	0.56	0/81	0.59	0/108
2	f	0.48	0/81	0.65	0/108
2	g	0.47	0/81	0.59	0/108
2	h	0.48	0/81	0.71	0/108
All	All	0.49	0/12901	0.64	5/17460 (0.0%)

There are no bond length outliers.

All (5) bond angle outliers are listed below:

Mol	Chain	Res	Type	Atoms	Z	Observed(°)	Ideal(°)
1	D	611	LEU	CA-CB-CG	7.51	132.57	115.30
1	F	492	LEU	CA-CB-CG	6.32	129.83	115.30
1	E	492	LEU	CA-CB-CG	6.12	129.39	115.30
1	C	611	LEU	CA-CB-CG	6.02	129.15	115.30
1	E	611	LEU	CA-CB-CG	5.34	127.58	115.30

There are no chirality outliers.

There are no planarity outliers.

5.2 Too-close contacts ⓘ

In the following table, the Non-H and H(model) columns list the number of non-hydrogen atoms and hydrogen atoms in the chain respectively. The H(added) column lists the number of hydrogen atoms added and optimized by MolProbity. The Clashes column lists the number of clashes within the asymmetric unit, whereas Symm-Clashes lists symmetry related clashes.

Mol	Chain	Non-H	H(model)	H(added)	Clashes	Symm-Clashes
1	A	1516	0	1550	17	0
1	B	1489	0	1503	17	0
1	C	1521	0	1567	26	0
1	D	1518	0	1547	19	0
1	E	1516	0	1544	15	0
1	F	1513	0	1540	21	0
1	G	1480	0	1525	20	0
1	H	1472	0	1508	15	0
2	a	79	0	76	0	0
2	b	79	0	76	0	0
2	c	79	0	76	0	0
2	d	79	0	76	0	0
2	e	79	0	76	0	0
2	f	79	0	76	0	0
2	g	79	0	76	0	0
2	h	79	0	76	0	0
3	A	8	0	10	0	0
3	B	8	0	10	0	0
3	D	16	0	20	6	0
4	B	8	0	10	3	0
5	C	5	0	0	0	0
5	G	10	0	0	0	0
5	H	10	0	0	0	0
6	A	10	0	0	0	0
6	B	12	0	0	1	0
6	C	31	0	0	1	0
6	D	31	0	0	0	0
6	E	24	0	0	0	0
6	F	11	0	0	0	0
6	G	15	0	0	0	0
6	H	13	0	0	1	0
6	a	1	0	0	0	0
6	b	1	0	0	0	0
6	c	1	0	0	0	0
6	d	2	0	0	0	0
6	e	1	0	0	0	0
6	g	1	0	0	0	0

Continued on next page...

Continued from previous page...

Mol	Chain	Non-H	H(model)	H(added)	Clashes	Symm-Clashes
6	h	1	0	0	0	0
All	All	12877	0	12942	145	0

The all-atom clashscore is defined as the number of clashes found per 1000 atoms (including hydrogen atoms). The all-atom clashscore for this structure is 6.

The worst 5 of 145 close contacts within the same asymmetric unit are listed below, sorted by their clash magnitude.

Atom-1	Atom-2	Interatomic distance (Å)	Clash overlap (Å)
1:H:537:HIS:HD2	1:H:668:ARG:HH11	1.14	0.91
1:E:602:ASN:HD22	1:E:604:ILE:H	1.18	0.91
1:C:509:ASN:HD21	1:C:624:GLN:HE22	1.21	0.88
1:G:537:HIS:HD2	1:G:668:ARG:HH11	1.21	0.88
1:F:602:ASN:HD22	1:F:604:ILE:H	1.21	0.85

There are no symmetry-related clashes.

5.3 Torsion angles [i](#)

5.3.1 Protein backbone [i](#)

In the following table, the Percentiles column shows the percent Ramachandran outliers of the chain as a percentile score with respect to all X-ray entries followed by that with respect to entries of similar resolution.

The Analysed column shows the number of residues for which the backbone conformation was analysed, and the total number of residues.

Mol	Chain	Analysed	Favoured	Allowed	Outliers	Percentiles	
1	A	196/206 (95%)	191 (97%)	5 (3%)	0	100	100
1	B	194/206 (94%)	186 (96%)	6 (3%)	2 (1%)	19	39
1	C	196/206 (95%)	186 (95%)	10 (5%)	0	100	100
1	D	197/206 (96%)	190 (96%)	7 (4%)	0	100	100
1	E	197/206 (96%)	185 (94%)	11 (6%)	1 (0%)	34	60
1	F	196/206 (95%)	187 (95%)	8 (4%)	1 (0%)	34	60
1	G	191/206 (93%)	182 (95%)	9 (5%)	0	100	100
1	H	191/206 (93%)	186 (97%)	5 (3%)	0	100	100

Continued on next page...

Continued from previous page...

Mol	Chain	Analysed	Favoured	Allowed	Outliers	Percentiles	
2	a	7/9 (78%)	7 (100%)	0	0	100	100
2	b	7/9 (78%)	7 (100%)	0	0	100	100
2	c	7/9 (78%)	7 (100%)	0	0	100	100
2	d	7/9 (78%)	6 (86%)	1 (14%)	0	100	100
2	e	7/9 (78%)	6 (86%)	1 (14%)	0	100	100
2	f	7/9 (78%)	6 (86%)	1 (14%)	0	100	100
2	g	7/9 (78%)	6 (86%)	1 (14%)	0	100	100
2	h	7/9 (78%)	6 (86%)	1 (14%)	0	100	100
All	All	1614/1720 (94%)	1544 (96%)	66 (4%)	4 (0%)	52	77

All (4) Ramachandran outliers are listed below:

Mol	Chain	Res	Type
1	F	565	GLU
1	B	535	PHE
1	B	477	PRO
1	E	522	PRO

5.3.2 Protein sidechains ⓘ

In the following table, the Percentiles column shows the percent sidechain outliers of the chain as a percentile score with respect to all X-ray entries followed by that with respect to entries of similar resolution.

The Analysed column shows the number of residues for which the sidechain conformation was analysed, and the total number of residues.

Mol	Chain	Analysed	Rotameric	Outliers	Percentiles	
1	A	167/175 (95%)	159 (95%)	8 (5%)	31	58
1	B	163/175 (93%)	157 (96%)	6 (4%)	41	69
1	C	169/175 (97%)	159 (94%)	10 (6%)	24	47
1	D	167/175 (95%)	158 (95%)	9 (5%)	27	52
1	E	167/175 (95%)	158 (95%)	9 (5%)	27	52
1	F	167/175 (95%)	156 (93%)	11 (7%)	21	40
1	G	164/175 (94%)	149 (91%)	15 (9%)	12	22
1	H	162/175 (93%)	152 (94%)	10 (6%)	23	45

Continued on next page...

Continued from previous page...

Mol	Chain	Analysed	Rotameric	Outliers	Percentiles	
2	a	7/7 (100%)	7 (100%)	0	100	100
2	b	7/7 (100%)	7 (100%)	0	100	100
2	c	7/7 (100%)	7 (100%)	0	100	100
2	d	7/7 (100%)	7 (100%)	0	100	100
2	e	7/7 (100%)	7 (100%)	0	100	100
2	f	7/7 (100%)	7 (100%)	0	100	100
2	g	7/7 (100%)	7 (100%)	0	100	100
2	h	7/7 (100%)	6 (86%)	1 (14%)	4	7
All	All	1382/1456 (95%)	1303 (94%)	79 (6%)	25	49

5 of 79 residues with a non-rotameric sidechain are listed below:

Mol	Chain	Res	Type
1	E	541	ILE
1	F	523	GLU
1	H	544	THR
1	E	558	GLN
1	E	602	ASN

Some sidechains can be flipped to improve hydrogen bonding and reduce clashes. 5 of 36 such sidechains are listed below:

Mol	Chain	Res	Type
1	E	561	HIS
1	F	509	ASN
1	H	537	HIS
1	E	643	GLN
1	F	558	GLN

5.3.3 RNA ⓘ

There are no RNA molecules in this entry.

5.4 Non-standard residues in protein, DNA, RNA chains ⓘ

There are no non-standard protein/DNA/RNA residues in this entry.

5.5 Carbohydrates ⓘ

There are no carbohydrates in this entry.

5.6 Ligand geometry ⓘ

10 ligands are modelled in this entry.

In the following table, the Counts columns list the number of bonds (or angles) for which Mogul statistics could be retrieved, the number of bonds (or angles) that are observed in the model and the number of bonds (or angles) that are defined in the chemical component dictionary. The Link column lists molecule types, if any, to which the group is linked. The Z score for a bond length (or angle) is the number of standard deviations the observed value is removed from the expected value. A bond length (or angle) with $|Z| > 2$ is considered an outlier worth inspection. RMSZ is the root-mean-square of all Z scores of the bond lengths (or angles).

Mol	Type	Chain	Res	Link	Bond lengths			Bond angles		
					Counts	RMSZ	$\# Z > 2$	Counts	RMSZ	$\# Z > 2$
3	DTT	A	5	-	7,7,7	0.84	0	4,8,8	1.91	1 (25%)
4	DTV	B	2	-	7,7,7	0.53	0	4,8,8	2.63	2 (50%)
3	DTT	B	3	-	7,7,7	0.65	0	4,8,8	2.74	1 (25%)
5	SO4	C	5	-	4,4,4	0.66	0	6,6,6	0.30	0
3	DTT	D	1	-	7,7,7	0.43	0	4,8,8	3.46	2 (50%)
3	DTT	D	4	-	7,7,7	0.83	0	4,8,8	1.86	1 (25%)
5	SO4	G	2	-	4,4,4	0.34	0	6,6,6	0.45	0
5	SO4	G	3	-	4,4,4	0.28	0	6,6,6	0.46	0
5	SO4	H	1	-	4,4,4	0.41	0	6,6,6	0.22	0
5	SO4	H	4	-	4,4,4	0.15	0	6,6,6	0.30	0

In the following table, the Chirals column lists the number of chiral outliers, the number of chiral centers analysed, the number of these observed in the model and the number defined in the chemical component dictionary. Similar counts are reported in the Torsion and Rings columns. '-' means no outliers of that kind were identified.

Mol	Type	Chain	Res	Link	Chirals	Torsions	Rings
3	DTT	A	5	-	-	0/8/8/8	0/0/0/0
4	DTV	B	2	-	-	0/8/8/8	0/0/0/0
3	DTT	B	3	-	-	0/8/8/8	0/0/0/0
5	SO4	C	5	-	-	0/0/0/0	0/0/0/0
3	DTT	D	1	-	-	0/8/8/8	0/0/0/0
3	DTT	D	4	-	-	0/8/8/8	0/0/0/0
5	SO4	G	2	-	-	0/0/0/0	0/0/0/0
5	SO4	G	3	-	-	0/0/0/0	0/0/0/0
5	SO4	H	1	-	-	0/0/0/0	0/0/0/0

Continued on next page...

Continued from previous page...

Mol	Type	Chain	Res	Link	Chirals	Torsions	Rings
5	SO4	H	4	-	-	0/0/0/0	0/0/0/0

There are no bond length outliers.

The worst 5 of 7 bond angle outliers are listed below:

Mol	Chain	Res	Type	Atoms	Z	Observed(°)	Ideal(°)
3	D	1	DTT	C3-C4-S4	-5.36	105.03	113.91
3	B	3	DTT	C3-C4-S4	-5.05	105.53	113.91
4	B	2	DTV	C3-C4-S4	-4.04	107.22	113.91
3	D	1	DTT	C2-C1-S1	-3.56	108.00	113.91
3	A	5	DTT	C2-C1-S1	-3.47	108.16	113.91

There are no chirality outliers.

There are no torsion outliers.

There are no ring outliers.

2 monomers are involved in 9 short contacts:

Mol	Chain	Res	Type	Clashes	Symm-Clashes
4	B	2	DTV	3	0
3	D	1	DTT	6	0

5.7 Other polymers [i](#)

There are no such residues in this entry.

5.8 Polymer linkage issues [i](#)

There are no chain breaks in this entry.

6 Fit of model and data ⓘ

6.1 Protein, DNA and RNA chains ⓘ

In the following table, the column labelled ‘#RSRZ> 2’ contains the number (and percentage) of RSRZ outliers, followed by percent RSRZ outliers for the chain as percentile scores relative to all X-ray entries and entries of similar resolution. The OWAB column contains the minimum, median, 95th percentile and maximum values of the occupancy-weighted average B-factor per residue. The column labelled ‘Q< 0.9’ lists the number of (and percentage) of residues with an average occupancy less than 0.9.

Mol	Chain	Analysed	<RSRZ>	#RSRZ>2	OWAB(Å ²)	Q<0.9
1	A	198/206 (96%)	-0.11	3 (1%) 76 71	30, 55, 83, 92	0
1	B	196/206 (95%)	-0.14	4 (2%) 68 63	30, 54, 75, 88	0
1	C	198/206 (96%)	-0.22	3 (1%) 76 71	20, 41, 72, 93	0
1	D	199/206 (96%)	-0.19	3 (1%) 76 71	21, 40, 74, 94	0
1	E	199/206 (96%)	-0.14	5 (2%) 61 54	30, 45, 78, 93	0
1	F	198/206 (96%)	-0.11	8 (4%) 42 34	32, 51, 81, 97	0
1	G	193/206 (93%)	0.07	6 (3%) 52 45	25, 50, 72, 84	0
1	H	193/206 (93%)	-0.06	5 (2%) 59 53	30, 49, 74, 84	0
2	a	9/9 (100%)	-0.31	0 100 100	36, 42, 51, 54	0
2	b	9/9 (100%)	-0.20	0 100 100	35, 43, 49, 51	0
2	c	9/9 (100%)	-0.36	0 100 100	32, 38, 46, 50	0
2	d	9/9 (100%)	-0.32	0 100 100	36, 41, 50, 56	0
2	e	9/9 (100%)	-0.37	0 100 100	35, 40, 50, 51	0
2	f	9/9 (100%)	-0.31	0 100 100	36, 42, 48, 51	0
2	g	9/9 (100%)	-0.31	0 100 100	33, 38, 49, 64	0
2	h	9/9 (100%)	-0.05	0 100 100	38, 43, 55, 65	0
All	All	1646/1720 (95%)	-0.12	37 (2%) 65 59	20, 48, 77, 97	0

The worst 5 of 37 RSRZ outliers are listed below:

Mol	Chain	Res	Type	RSRZ
1	G	591	ALA	4.6
1	A	672	PRO	3.7
1	F	565	GLU	3.6
1	H	591	ALA	3.5
1	E	564	TYR	3.2

6.2 Non-standard residues in protein, DNA, RNA chains [i](#)

There are no non-standard protein/DNA/RNA residues in this entry.

6.3 Carbohydrates [i](#)

There are no carbohydrates in this entry.

6.4 Ligands [i](#)

In the following table, the Atoms column lists the number of modelled atoms in the group and the number defined in the chemical component dictionary. LLDF column lists the quality of electron density of the group with respect to its neighbouring residues in protein, DNA or RNA chains. The B-factors column lists the minimum, median, 95th percentile and maximum values of B factors of atoms in the group. The column labelled 'Q< 0.9' lists the number of atoms with occupancy less than 0.9.

Mol	Type	Chain	Res	Atoms	RSCC	RSR	LLDF	B-factors(Å ²)	Q<0.9
3	DTT	B	3	8/8	0.87	0.27	6.68	47,48,51,56	0
4	DTV	B	2	8/8	0.90	0.30	6.61	36,43,53,62	0
3	DTT	D	4	8/8	0.89	0.25	5.41	53,57,58,60	0
5	SO4	H	1	5/5	0.93	0.21	5.32	36,42,51,55	0
3	DTT	D	1	8/8	0.93	0.22	3.56	32,42,48,51	0
3	DTT	A	5	8/8	0.92	0.18	1.50	48,51,56,62	0
5	SO4	G	2	5/5	0.95	0.15	0.24	50,51,61,62	0
5	SO4	H	4	5/5	0.97	0.12	-1.64	38,39,45,47	0
5	SO4	G	3	5/5	0.97	0.09	-2.03	28,33,38,42	0
5	SO4	C	5	5/5	0.82	0.30	-	46,51,54,72	0

6.5 Other polymers [i](#)

There are no such residues in this entry.