



Full wwPDB X-ray Structure Validation Report ⓘ

Jan 31, 2016 – 09:54 PM GMT

PDB ID : 1R4P
Title : Shiga toxin type 2
Authors : Fraser, M.E.; Fujinaga, M.; Cherney, M.M.; Melton-Celsa, A.R.; Twiddy, E.M.; O'Brien, A.D.; James, M.N.G.
Deposited on : 2003-10-07
Resolution : 1.77 Å(reported)

This is a Full wwPDB X-ray Structure Validation Report for a publicly released PDB entry.
We welcome your comments at validation@mail.wwpdb.org
A user guide is available at
<http://wwpdb.org/validation/2016/XrayValidationReportHelp>
with specific help available everywhere you see the ⓘ symbol.

The following versions of software and data (see [references ⓘ](#)) were used in the production of this report:

MolProbity : 4.02b-467
Mogul : 1.7 (RC4), CSD as536be (2015)
Xtriage (Phenix) : 1.9-1692
EDS : rb-20026688
Percentile statistics : 20151230.v01 (using entries in the PDB archive December 30th 2015)
Refmac : 5.8.0135
CCP4 : 6.5.0
Ideal geometry (proteins) : Engh & Huber (2001)
Ideal geometry (DNA, RNA) : Parkinson et al. (1996)
Validation Pipeline (wwPDB-VP) : trunk26865

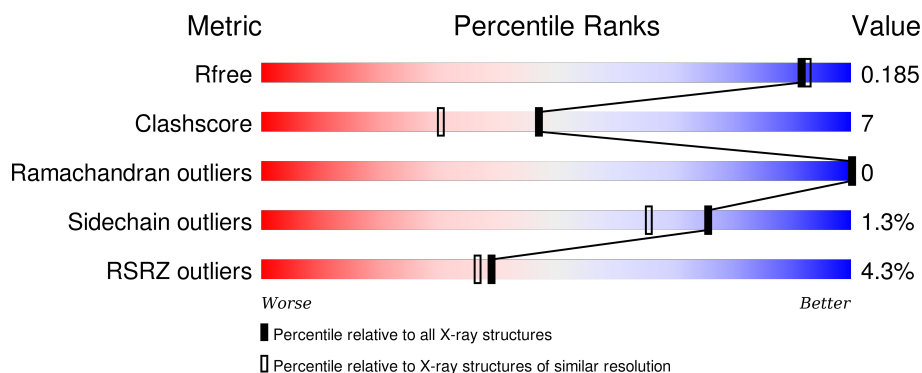
1 Overall quality at a glance

The following experimental techniques were used to determine the structure:

X-RAY DIFFRACTION

The reported resolution of this entry is 1.77 Å.

Percentile scores (ranging between 0-100) for global validation metrics of the entry are shown in the following graphic. The table shows the number of entries on which the scores are based.



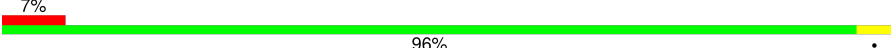
Metric	Whole archive (#Entries)	Similar resolution (#Entries, resolution range(Å))
R_{free}	91344	6655 (1.80-1.76)
Clashscore	102246	7658 (1.80-1.76)
Ramachandran outliers	100387	7570 (1.80-1.76)
Sidechain outliers	100360	7569 (1.80-1.76)
RSRZ outliers	91569	6671 (1.80-1.76)

The table below summarises the geometric issues observed across the polymeric chains and their fit to the electron density. The red, orange, yellow and green segments on the lower bar indicate the fraction of residues that contain outliers for ≥ 3 , 2, 1 and 0 types of geometric quality criteria. A grey segment represents the fraction of residues that are not modelled. The numeric value for each fraction is indicated below the corresponding segment, with a dot representing fractions $\leq 5\%$. The upper red bar (where present) indicates the fraction of residues that have poor fit to the electron density. The numeric value is given above the bar.

Mol	Chain	Length	Quality of chain
1	A	297	<div> <div>3%</div> <div>82% 12% 5%</div> </div>
2	B	70	<div> <div>11%</div> <div>80% 20%</div> </div>
2	C	70	<div> <div>80% 17% .</div> </div>
2	D	70	<div> <div>90% 10%</div> </div>
2	E	70	<div> <div>6%</div> <div>86% 14%</div> </div>

Continued on next page...

Continued from previous page...

Mol	Chain	Length	Quality of chain
2	F	70	

The following table lists non-polymeric compounds, carbohydrate monomers and non-standard residues in protein, DNA, RNA chains that are outliers for geometric or electron-density-fit criteria:

Mol	Type	Chain	Res	Chirality	Geometry	Clashes	Electron density
3	NA	A	4002	-	-	-	X
4	1PS	F	1001	-	-	-	X
5	EDO	A	2003	-	-	-	X
5	EDO	A	2004	-	-	-	X
5	EDO	D	2002	-	-	-	X
5	EDO	F	2001	-	-	-	X
5	EDO	F	2005	-	-	-	X

2 Entry composition

There are 7 unique types of molecules in this entry. The entry contains 5617 atoms, of which 0 are hydrogens and 0 are deuteriums.

In the tables below, the ZeroOcc column contains the number of atoms modelled with zero occupancy, the AltConf column contains the number of residues with at least one atom in alternate conformation and the Trace column contains the number of residues modelled with at most 2 atoms.

- Molecule 1 is a protein called shiga-like toxin type II A subunit.

Mol	Chain	Residues	Atoms					ZeroOcc	AltConf	Trace
1	A	281	Total	C	N	O	S	0	5	0
			2225	1393	392	433	7			

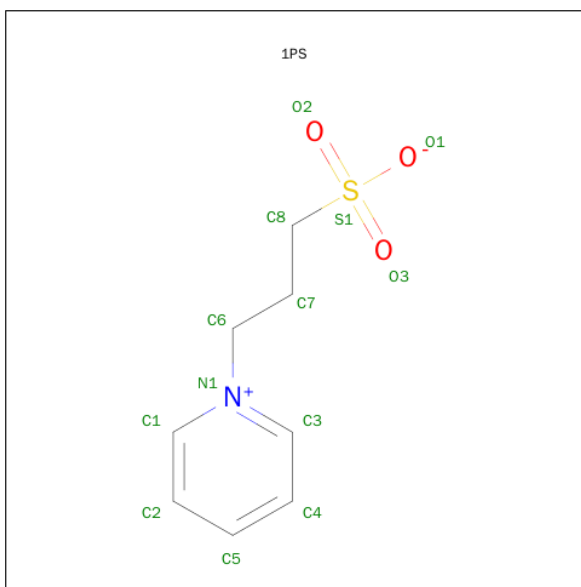
- Molecule 2 is a protein called shiga-like toxin type II B subunit.

Mol	Chain	Residues	Atoms					ZeroOcc	AltConf	Trace
2	B	70	Total	C	N	O	S	0	0	0
			549	342	89	115	3			
2	C	70	Total	C	N	O	S	0	4	0
			559	348	89	119	3			
2	D	70	Total	C	N	O	S	0	0	0
			549	342	89	115	3			
2	E	70	Total	C	N	O	S	0	0	0
			549	342	89	115	3			
2	F	70	Total	C	N	O	S	0	1	0
			550	342	89	116	3			

- Molecule 3 is SODIUM ION (three-letter code: NA) (formula: Na).

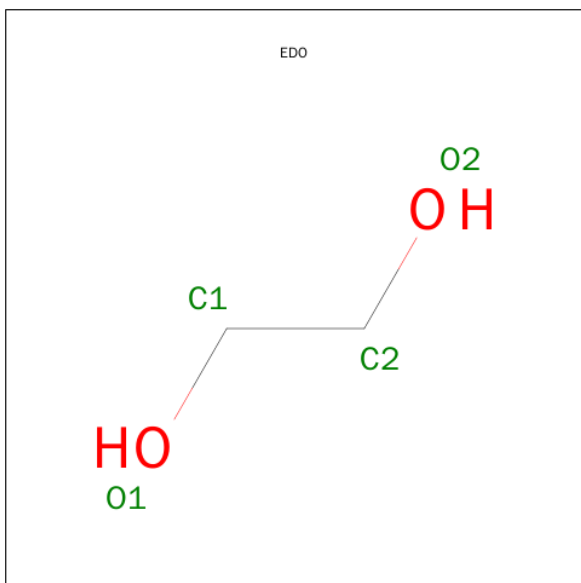
Mol	Chain	Residues	Atoms		ZeroOcc	AltConf
3	B	1	Total	Na	0	0
			1	1		
3	A	3	Total	Na	0	0
			3	3		
3	F	1	Total	Na	0	0
			1	1		

- Molecule 4 is 3-PYRIDINIUM-1-YLPROPANE-1-SULFONATE (three-letter code: 1PS) (formula: C₈H₁₁NO₃S).



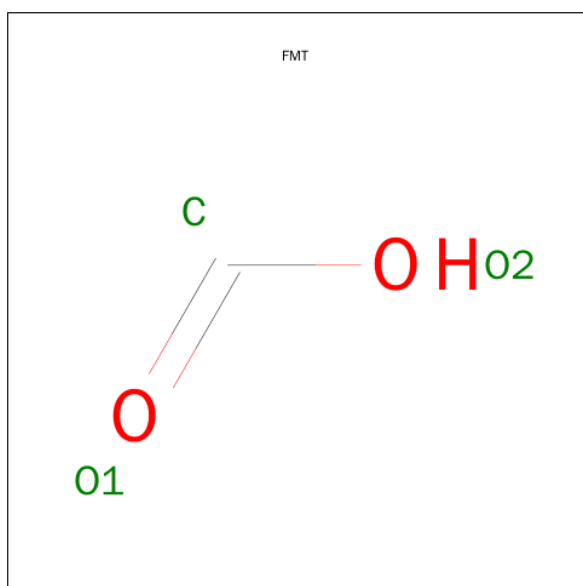
Mol	Chain	Residues	Atoms					ZeroOcc	AltConf
4	F	1	Total	C	N	O	S	0	0
			13	8	1	3	1		
4	B	1	Total	C	N	O	S	0	0
			13	8	1	3	1		
4	C	1	Total	C	N	O	S	0	0
			13	8	1	3	1		
4	D	1	Total	C	N	O	S	0	0
			13	8	1	3	1		

- Molecule 5 is 1,2-ETHANEDIOL (three-letter code: EDO) (formula: $C_2H_6O_2$).



Mol	Chain	Residues	Atoms	ZeroOcc	AltConf
5	F	1	Total C O 4 2 2	0	0
5	D	1	Total C O 4 2 2	0	0
5	A	1	Total C O 4 2 2	0	0
5	A	1	Total C O 4 2 2	0	0
5	F	1	Total C O 4 2 2	0	0

- Molecule 6 is FORMIC ACID (three-letter code: FMT) (formula: CH₂O₂).



Mol	Chain	Residues	Atoms	ZeroOcc	AltConf
6	A	1	Total C O 3 1 2	0	0
6	E	1	Total C O 3 1 2	0	0
6	D	1	Total C O 3 1 2	0	0
6	A	1	Total C O 3 1 2	0	0
6	F	1	Total C O 3 1 2	0	0
6	B	1	Total C O 3 1 2	0	0
6	C	1	Total C O 3 1 2	0	0

Continued on next page...

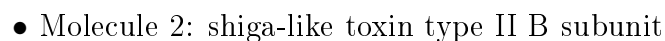
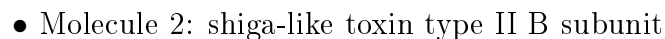
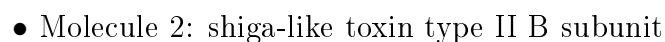
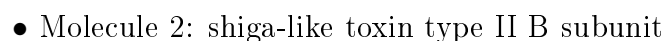
Continued from previous page...

Mol	Chain	Residues	Atoms	ZeroOcc	AltConf
6	E	1	Total C O 3 1 2	0	0
6	A	1	Total C O 3 1 2	0	0
6	A	1	Total C O 3 1 2	0	0
6	F	1	Total C O 3 1 2	0	0
6	C	1	Total C O 3 1 2	0	0
6	A	1	Total C O 3 1 2	0	0
6	E	1	Total C O 3 1 2	0	0
6	A	1	Total C O 6 2 4	0	1

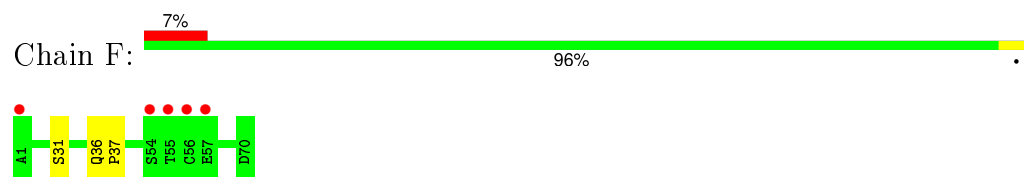
- Molecule 7 is water.

Mol	Chain	Residues	Atoms	ZeroOcc	AltConf
7	A	235	Total O 235 235	0	0
7	B	48	Total O 48 48	0	0
7	C	75	Total O 75 75	0	0
7	D	61	Total O 61 61	0	0
7	E	39	Total O 39 39	0	0
7	F	53	Total O 53 53	0	0

- Molecule 1: shiga-like toxin type II A subunit



- Molecule 2: shiga-like toxin type II B subunit



4 Data and refinement statistics

Property	Value	Source
Space group	P 61	Depositor
Cell constants a, b, c, α , β , γ	143.96 Å 143.96 Å 59.30 Å 90.00° 90.00° 120.00°	Depositor
Resolution (Å)	25.10 – 1.77 25.10 – 1.77	Depositor EDS
% Data completeness (in resolution range)	(Not available) (25.10-1.77) 98.2 (25.10-1.77)	Depositor EDS
R_{merge}	(Not available)	Depositor
R_{sym}	(Not available)	Depositor
$\langle I/\sigma(I) \rangle$ ¹	3.46 (at 1.77 Å)	Xtriage
Refinement program	CNS	Depositor
R, R_{free}	0.151 , 0.184 0.153 , 0.185	Depositor DCC
R_{free} test set	3376 reflections (5.05%)	DCC
Wilson B-factor (Å ²)	15.7	Xtriage
Anisotropy	0.469	Xtriage
Bulk solvent k_{sol} (e/Å ³), B_{sol} (Å ²)	0.43 , 50.7	EDS
Estimated twinning fraction	0.031 for h,-h-k,-l	Xtriage
L-test for twinning ²	$\langle L \rangle = 0.49$, $\langle L^2 \rangle = 0.33$	Xtriage
Outliers	0 of 66890 reflections	Xtriage
F_o, F_c correlation	0.97	EDS
Total number of atoms	5617	wwPDB-VP
Average B, all atoms (Å ²)	18.0	wwPDB-VP

Xtriage's analysis on translational NCS is as follows: *The largest off-origin peak in the Patterson function is 5.52% of the height of the origin peak. No significant pseudotranslation is detected.*

¹Intensities estimated from amplitudes.

²Theoretical values of $\langle |L| \rangle$, $\langle L^2 \rangle$ for acentric reflections are 0.5, 0.375 respectively for untwinned datasets, and 0.333, 0.2 for perfectly twinned datasets.

5 Model quality ⓘ

5.1 Standard geometry ⓘ

Bond lengths and bond angles in the following residue types are not validated in this section: 1PS, FMT, EDO, NA

The Z score for a bond length (or angle) is the number of standard deviations the observed value is removed from the expected value. A bond length (or angle) with $|Z| > 5$ is considered an outlier worth inspection. RMSZ is the root-mean-square of all Z scores of the bond lengths (or angles).

Mol	Chain	Bond lengths		Bond angles	
		RMSZ	$\# Z > 5$	RMSZ	$\# Z > 5$
1	A	0.77	0/2291	0.98	5/3114 (0.2%)
2	B	0.78	0/559	0.90	0/753
2	C	0.84	0/589	1.04	3/794 (0.4%)
2	D	0.90	0/559	0.96	0/753
2	E	0.83	0/559	0.94	0/753
2	F	0.77	0/565	0.87	0/761
All	All	0.80	0/5122	0.96	8/6928 (0.1%)

There are no bond length outliers.

All (8) bond angle outliers are listed below:

Mol	Chain	Res	Type	Atoms	Z	Observed(°)	Ideal(°)
1	A	219	ARG	NE-CZ-NH2	-8.46	116.07	120.30
2	C	44[A]	LEU	CA-CB-CG	8.21	134.17	115.30
2	C	44[B]	LEU	CA-CB-CG	8.21	134.17	115.30
1	A	219	ARG	NE-CZ-NH1	7.39	124.00	120.30
1	A	287	ARG	NE-CZ-NH1	5.46	123.03	120.30
1	A	38	VAL	N-CA-C	-5.40	96.41	111.00
1	A	265	ASP	CB-CG-OD1	5.11	122.90	118.30
2	C	32	ARG	NE-CZ-NH2	-5.03	117.78	120.30

There are no chirality outliers.

There are no planarity outliers.

5.2 Too-close contacts ⓘ

In the following table, the Non-H and H(model) columns list the number of non-hydrogen atoms and hydrogen atoms in the chain respectively. The H(added) column lists the number of hydrogen

atoms added and optimized by MolProbity. The Clashes column lists the number of clashes within the asymmetric unit, whereas Symm-Clashes lists symmetry related clashes.

Mol	Chain	Non-H	H(model)	H(added)	Clashes	Symm-Clashes
1	A	2225	0	2192	33	0
2	B	549	0	518	10	0
2	C	559	0	531	24	0
2	D	549	0	518	6	0
2	E	549	0	518	14	0
2	F	550	0	517	2	0
3	A	3	0	0	0	0
3	B	1	0	0	0	0
3	F	1	0	0	0	0
4	B	13	0	11	0	0
4	C	13	0	11	0	0
4	D	13	0	11	0	0
4	F	13	0	11	0	0
5	A	8	0	12	3	0
5	D	4	0	6	2	0
5	F	8	0	12	2	0
6	A	21	0	7	1	0
6	B	3	0	1	0	0
6	C	6	0	2	0	0
6	D	3	0	1	0	0
6	E	9	0	3	1	0
6	F	6	0	2	0	0
7	A	235	0	0	2	0
7	B	48	0	0	6	0
7	C	75	0	0	0	1
7	D	61	0	0	0	1
7	E	39	0	0	1	0
7	F	53	0	0	1	0
All	All	5617	0	4884	75	1

The all-atom clashscore is defined as the number of clashes found per 1000 atoms (including hydrogen atoms). The all-atom clashscore for this structure is 7.

All (75) close contacts within the same asymmetric unit are listed below, sorted by their clash magnitude.

Atom-1	Atom-2	Interatomic distance (Å)	Clash overlap (Å)
2:E:26:LYS:HE2	2:E:58:SER:HB2	1.11	1.10
1:A:273:ASN:HB2	7:F:4057:HOH:O	1.71	0.90
7:B:4039:HOH:O	2:C:44[B]:LEU:HD21	1.69	0.89

Continued on next page...

Continued from previous page...

Atom-1	Atom-2	Interatomic distance (Å)	Clash overlap (Å)
2:E:57:GLU:HG2	2:E:60:SER:HB3	1.58	0.86
7:B:4039:HOH:O	2:C:44[B]:LEU:HD11	1.82	0.80
1:A:292:LEU:HD13	5:A:2003:EDO:H21	1.65	0.78
2:B:57:GLU:O	2:B:60:SER:HB2	1.86	0.75
2:C:32:ARG:N	2:C:32:ARG:HD2	2.06	0.71
1:A:282:ALA:HB2	2:C:45[B]:THR:CG2	2.23	0.69
2:E:70:ASP:HB3	7:E:3038:HOH:O	1.97	0.65
2:E:26:LYS:CE	2:E:58:SER:HB2	2.07	0.64
2:E:26:LYS:HE2	2:E:58:SER:CB	2.07	0.63
1:A:183:SER:OG	1:A:185:THR:HG23	2.01	0.61
1:A:216:ASP:OD2	1:A:273:ASN:ND2	2.31	0.61
1:A:44[B]:THR:HG22	1:A:74:ASN:OD1	2.00	0.61
2:D:52:LYS:HE3	2:E:12:LYS:HE3	1.83	0.61
1:A:270:LYS:HE3	1:A:273:ASN:HA	1.84	0.60
2:F:36:GLN:HB2	2:F:37:PRO:HD3	1.85	0.59
2:D:64:GLU:HB2	2:E:15:GLU:HG3	1.86	0.58
1:A:282:ALA:HB2	2:C:45[B]:THR:HG23	1.86	0.57
1:A:180:GLN:HG2	7:A:4032:HOH:O	2.04	0.57
2:E:70:ASP:OD1	2:E:70:ASP:C	2.44	0.56
1:A:18:ASN:O	1:A:22[B]:THR:HG23	2.06	0.56
2:E:69:ASN:O	2:E:70:ASP:CB	2.53	0.56
1:A:288:LYS:NZ	5:A:2003:EDO:O2	2.28	0.55
2:D:17:ASP:HB3	2:D:33:TRP:CH2	2.45	0.52
1:A:269:ILE:HD11	2:C:44[A]:LEU:CD1	2.41	0.51
2:D:33:TRP:CD2	5:D:2002:EDO:H11	2.46	0.51
1:A:2:GLU:CD	1:A:68:ARG:HH22	2.15	0.51
2:C:17:ASP:HB3	2:C:33:TRP:CH2	2.45	0.51
2:E:29:TRP:O	2:E:61:GLY:HA2	2.11	0.50
1:A:207:ASN:HD21	6:A:3004:FMT:C	2.23	0.50
1:A:269:ILE:CD1	2:C:44[A]:LEU:HD13	2.42	0.49
1:A:91:ARG:HD2	1:A:95:PHE:O	2.13	0.48
7:B:4039:HOH:O	2:C:44[B]:LEU:CD1	2.53	0.48
1:A:19:SER:HB2	5:A:2004:EDO:H12	1.97	0.47
2:E:69:ASN:O	2:E:70:ASP:CG	2.54	0.46
1:A:202:TRP:CZ3	1:A:239:LEU:HG	2.51	0.46
1:A:23:GLU:HG2	7:A:4183:HOH:O	2.15	0.46
2:D:2:ASP:OD1	2:D:52:LYS:HG2	2.16	0.45
2:C:35:LEU:HD21	2:D:13:TYR:CB	2.46	0.45
2:E:57:GLU:CG	2:E:60:SER:HB3	2.38	0.45
1:A:5:ILE:HA	1:A:16:SER:HB3	1.98	0.45
1:A:288:LYS:NZ	5:D:2002:EDO:O1	2.44	0.45

Continued on next page...

Continued from previous page...

Atom-1	Atom-2	Interatomic distance (Å)	Clash overlap (Å)
7:B:4039:HOH:O	2:C:44[B]:LEU:CD2	2.45	0.45
2:B:45:THR:OG1	2:C:44[B]:LEU:HD21	2.16	0.45
1:A:259:GLU:N	1:A:259:GLU:CD	2.69	0.45
1:A:269:ILE:HD11	2:C:44[A]:LEU:HD13	1.98	0.45
1:A:282:ALA:CB	2:C:45[B]:THR:CG2	2.94	0.45
1:A:291:PHE:HB2	5:F:2001:EDO:H21	1.98	0.45
2:F:31:SER:O	5:F:2005:EDO:H21	2.17	0.45
1:A:180:GLN:NE2	1:A:180:GLN:HA	2.33	0.43
1:A:282:ALA:CB	2:C:45[B]:THR:HG21	2.48	0.43
7:B:4039:HOH:O	2:C:44[B]:LEU:CG	2.67	0.43
2:C:10:PHE:CD1	2:C:10:PHE:C	2.93	0.42
1:A:202:TRP:CH2	1:A:239:LEU:HG	2.55	0.42
2:B:29:TRP:O	2:B:61:GLY:HA2	2.20	0.42
1:A:212:TYR:HA	1:A:275:LEU:HD22	2.01	0.41
2:B:5:LYS:HA	2:B:49:VAL:O	2.20	0.41
2:B:26:LYS:HE3	2:B:26:LYS:HB2	1.97	0.41
1:A:44[B]:THR:HG21	1:A:73:GLN:HB3	2.03	0.41
2:B:64:GLU:HA	2:C:13:TYR:O	2.21	0.41
2:B:41:SER:OG	2:C:44[B]:LEU:HD11	2.21	0.41
1:A:239:LEU:HD11	1:A:259:GLU:HG2	2.03	0.41
2:B:45:THR:HG21	2:C:44[A]:LEU:HD22	2.02	0.41
2:C:36:GLN:HB2	2:C:37:PRO:HD3	2.03	0.41
7:B:4036:HOH:O	2:C:44[B]:LEU:HD23	2.20	0.40
2:E:69:ASN:O	2:E:70:ASP:HB3	2.20	0.40
2:B:19:PHE:HB2	2:B:36:GLN:HG2	2.03	0.40
1:A:172:ARG:HD2	1:A:232:LEU:O	2.21	0.40
2:C:19:PHE:HB2	2:C:36:GLN:HG2	2.03	0.40
2:E:69:ASN:O	6:E:3014:FMT:H	2.21	0.40
2:C:11:SER:HA	2:C:20:THR:O	2.20	0.40
2:B:10:PHE:C	2:B:10:PHE:CD1	2.94	0.40

All (1) symmetry-related close contacts are listed below. The label for Atom-2 includes the symmetry operator and encoded unit-cell translations to be applied.

Atom-1	Atom-2	Interatomic distance (Å)	Clash overlap (Å)
7:C:3066:HOH:O	7:D:3039:HOH:O[4_664]	2.17	0.03

5.3 Torsion angles

5.3.1 Protein backbone

In the following table, the Percentiles column shows the percent Ramachandran outliers of the chain as a percentile score with respect to all X-ray entries followed by that with respect to entries of similar resolution.

The Analysed column shows the number of residues for which the backbone conformation was analysed, and the total number of residues.

Mol	Chain	Analysed	Favoured	Allowed	Outliers	Percentiles	
1	A	282/297 (95%)	277 (98%)	5 (2%)	0	100	100
2	B	68/70 (97%)	66 (97%)	2 (3%)	0	100	100
2	C	72/70 (103%)	72 (100%)	0	0	100	100
2	D	68/70 (97%)	67 (98%)	1 (2%)	0	100	100
2	E	68/70 (97%)	66 (97%)	2 (3%)	0	100	100
2	F	69/70 (99%)	68 (99%)	1 (1%)	0	100	100
All	All	627/647 (97%)	616 (98%)	11 (2%)	0	100	100

There are no Ramachandran outliers to report.

5.3.2 Protein sidechains

In the following table, the Percentiles column shows the percent sidechain outliers of the chain as a percentile score with respect to all X-ray entries followed by that with respect to entries of similar resolution.

The Analysed column shows the number of residues for which the sidechain conformation was analysed, and the total number of residues.

Mol	Chain	Analysed	Rotameric	Outliers	Percentiles	
1	A	253/261 (97%)	251 (99%)	2 (1%)	86	81
2	B	61/61 (100%)	60 (98%)	1 (2%)	70	57
2	C	65/61 (107%)	61 (94%)	4 (6%)	23	7
2	D	61/61 (100%)	60 (98%)	1 (2%)	70	57
2	E	61/61 (100%)	61 (100%)	0	100	100
2	F	62/61 (102%)	62 (100%)	0	100	100
All	All	563/566 (100%)	555 (99%)	8 (1%)	76	63

All (8) residues with a non-rotameric sidechain are listed below:

Mol	Chain	Res	Type
1	A	185	THR
1	A	242	HIS
2	B	34	ASN
2	C	32	ARG
2	C	44[A]	LEU
2	C	44[B]	LEU
2	C	70	ASP
2	D	70	ASP

Some sidechains can be flipped to improve hydrogen bonding and reduce clashes. All (5) such sidechains are listed below:

Mol	Chain	Res	Type
1	A	42	ASN
1	A	129	GLN
1	A	180	GLN
1	A	207	ASN
1	A	226	ASN

5.3.3 RNA [i](#)

There are no RNA molecules in this entry.

5.4 Non-standard residues in protein, DNA, RNA chains [i](#)

There are no non-standard protein/DNA/RNA residues in this entry.

5.5 Carbohydrates [i](#)

There are no carbohydrates in this entry.

5.6 Ligand geometry [i](#)

Of 30 ligands modelled in this entry, 5 are monoatomic - leaving 25 for Mogul analysis.

In the following table, the Counts columns list the number of bonds (or angles) for which Mogul statistics could be retrieved, the number of bonds (or angles) that are observed in the model and the number of bonds (or angles) that are defined in the chemical component dictionary. The Link column lists molecule types, if any, to which the group is linked. The Z score for a bond length (or angle) is the number of standard deviations the observed value is removed from the expected

value. A bond length (or angle) with $|Z| > 2$ is considered an outlier worth inspection. RMSZ is the root-mean-square of all Z scores of the bond lengths (or angles).

Mol	Type	Chain	Res	Link	Bond lengths			Bond angles		
					Counts	RMSZ	# $ Z > 2$	Counts	RMSZ	# $ Z > 2$
5	EDO	A	2003	-	3,3,3	1.40	0	2,2,2	0.94	0
5	EDO	A	2004	-	3,3,3	2.08	2 (66%)	2,2,2	0.73	0
6	FMT	A	3001	-	0,2,2	0.00	-	0,1,1	0.00	-
6	FMT	A	3004	3	0,2,2	0.00	-	0,1,1	0.00	-
6	FMT	A	3009	-	0,2,2	0.00	-	0,1,1	0.00	-
6	FMT	A	3010	-	0,2,2	0.00	-	0,1,1	0.00	-
6	FMT	A	3013	-	0,2,2	0.00	-	0,1,1	0.00	-
6	FMT	A	3015[A]	-	0,2,2	0.00	-	0,1,1	0.00	-
6	FMT	A	3015[B]	-	0,2,2	0.00	-	0,1,1	0.00	-
4	1PS	B	1002	-	12,13,13	0.94	0	14,17,17	0.64	0
6	FMT	B	3006	-	0,2,2	0.00	-	0,1,1	0.00	-
4	1PS	C	1003	-	12,13,13	0.61	0	14,17,17	0.78	0
6	FMT	C	3007	-	0,2,2	0.00	-	0,1,1	0.00	-
6	FMT	C	3012	-	0,2,2	0.00	-	0,1,1	0.00	-
4	1PS	D	1004	-	12,13,13	1.05	0	14,17,17	0.51	0
5	EDO	D	2002	-	3,3,3	2.12	2 (66%)	2,2,2	0.62	0
6	FMT	D	3003	-	0,2,2	0.00	-	0,1,1	0.00	-
6	FMT	E	3002	-	0,2,2	0.00	-	0,1,1	0.00	-
6	FMT	E	3008	-	0,2,2	0.00	-	0,1,1	0.00	-
6	FMT	E	3014	-	0,2,2	0.00	-	0,1,1	0.00	-
4	1PS	F	1001	-	12,13,13	0.89	1 (8%)	14,17,17	0.58	0
5	EDO	F	2001	-	3,3,3	1.68	1 (33%)	2,2,2	0.38	0
5	EDO	F	2005	-	3,3,3	2.34	2 (66%)	2,2,2	0.50	0
6	FMT	F	3005	-	0,2,2	0.00	-	0,1,1	0.00	-
6	FMT	F	3011	-	0,2,2	0.00	-	0,1,1	0.00	-

In the following table, the Chirals column lists the number of chiral outliers, the number of chiral centers analysed, the number of these observed in the model and the number defined in the chemical component dictionary. Similar counts are reported in the Torsion and Rings columns. '-' means no outliers of that kind were identified.

Mol	Type	Chain	Res	Link	Chirals	Torsions	Rings
5	EDO	A	2003	-	-	0/1/1/1	0/0/0/0
5	EDO	A	2004	-	-	0/1/1/1	0/0/0/0
6	FMT	A	3001	-	-	0/0/0/0	0/0/0/0
6	FMT	A	3004	3	-	0/0/0/0	0/0/0/0
6	FMT	A	3009	-	-	0/0/0/0	0/0/0/0
6	FMT	A	3010	-	-	0/0/0/0	0/0/0/0
6	FMT	A	3013	-	-	0/0/0/0	0/0/0/0

Continued on next page...

Continued from previous page...

Mol	Type	Chain	Res	Link	Chirals	Torsions	Rings
6	FMT	A	3015[A]	-	-	0/0/0/0	0/0/0/0
6	FMT	A	3015[B]	-	-	0/0/0/0	0/0/0/0
4	1PS	B	1002	-	-	0/7/7/7	0/1/1/1
6	FMT	B	3006	-	-	0/0/0/0	0/0/0/0
4	1PS	C	1003	-	-	0/7/7/7	0/1/1/1
6	FMT	C	3007	-	-	0/0/0/0	0/0/0/0
6	FMT	C	3012	-	-	0/0/0/0	0/0/0/0
4	1PS	D	1004	-	-	0/7/7/7	0/1/1/1
5	EDO	D	2002	-	-	0/1/1/1	0/0/0/0
6	FMT	D	3003	-	-	0/0/0/0	0/0/0/0
6	FMT	E	3002	-	-	0/0/0/0	0/0/0/0
6	FMT	E	3008	-	-	0/0/0/0	0/0/0/0
6	FMT	E	3014	-	-	0/0/0/0	0/0/0/0
4	1PS	F	1001	-	-	0/7/7/7	0/1/1/1
5	EDO	F	2001	-	-	0/1/1/1	0/0/0/0
5	EDO	F	2005	-	-	0/1/1/1	0/0/0/0
6	FMT	F	3005	-	-	0/0/0/0	0/0/0/0
6	FMT	F	3011	-	-	0/0/0/0	0/0/0/0

All (8) bond length outliers are listed below:

Mol	Chain	Res	Type	Atoms	Z	Observed(Å)	Ideal(Å)
5	A	2004	EDO	O1-C1	2.11	1.53	1.42
4	F	1001	1PS	C3-N1	2.15	1.39	1.34
5	F	2005	EDO	O1-C1	2.25	1.54	1.42
5	D	2002	EDO	O1-C1	2.29	1.54	1.42
5	F	2001	EDO	O2-C2	2.55	1.55	1.42
5	D	2002	EDO	O2-C2	2.75	1.56	1.42
5	A	2004	EDO	O2-C2	2.86	1.57	1.42
5	F	2005	EDO	O2-C2	3.27	1.59	1.42

There are no bond angle outliers.

There are no chirality outliers.

There are no torsion outliers.

There are no ring outliers.

7 monomers are involved in 9 short contacts:

Mol	Chain	Res	Type	Clashes	Symm-Clashes
5	A	2003	EDO	2	0
5	A	2004	EDO	1	0

Continued on next page...

Continued from previous page...

Mol	Chain	Res	Type	Clashes	Symm-Clashes
6	A	3004	FMT	1	0
5	D	2002	EDO	2	0
6	E	3014	FMT	1	0
5	F	2001	EDO	1	0
5	F	2005	EDO	1	0

5.7 Other polymers [i](#)

There are no such residues in this entry.

5.8 Polymer linkage issues [i](#)

There are no chain breaks in this entry.

6 Fit of model and data ⓘ

6.1 Protein, DNA and RNA chains ⓘ

In the following table, the column labelled ‘#RSRZ> 2’ contains the number (and percentage) of RSRZ outliers, followed by percent RSRZ outliers for the chain as percentile scores relative to all X-ray entries and entries of similar resolution. The OWAB column contains the minimum, median, 95th percentile and maximum values of the occupancy-weighted average B-factor per residue. The column labelled ‘Q< 0.9’ lists the number of (and percentage) of residues with an average occupancy less than 0.9.

Mol	Chain	Analysed	<RSRZ>	#RSRZ>2	OWAB(Å ²)	Q<0.9
1	A	281/297 (94%)	-0.04	10 (3%) 46 44	10, 15, 28, 49	0
2	B	70/70 (100%)	0.22	8 (11%) 7 6	10, 16, 43, 56	0
2	C	70/70 (100%)	-0.13	0 100 100	10, 13, 18, 32	0
2	D	70/70 (100%)	-0.21	0 100 100	9, 14, 23, 38	0
2	E	70/70 (100%)	-0.01	4 (5%) 27 25	10, 17, 40, 47	0
2	F	70/70 (100%)	0.02	5 (7%) 19 18	11, 17, 30, 38	0
All	All	631/647 (97%)	-0.03	27 (4%) 39 37	9, 15, 30, 56	0

All (27) RSRZ outliers are listed below:

Mol	Chain	Res	Type	RSRZ
1	A	242	HIS	6.3
2	B	57	GLU	5.9
2	E	55	THR	4.6
2	B	54	SER	4.6
2	E	70	ASP	4.4
2	B	55	THR	4.2
2	B	70	ASP	4.2
2	B	58	SER	4.1
2	B	59	GLY	3.9
1	A	1	ARG	3.3
2	F	55	THR	3.0
2	F	57	GLU	3.0
2	E	57	GLU	2.9
2	F	54[A]	SER	2.6
2	F	1	ALA	2.6
2	E	54	SER	2.6
2	B	1	ALA	2.5
1	A	186	ALA	2.5
1	A	122	ALA	2.4

Continued on next page...

Continued from previous page...

Mol	Chain	Res	Type	RSRZ
2	F	56	CYS	2.3
2	B	60	SER	2.3
1	A	85	ALA	2.2
1	A	185	THR	2.2
1	A	184	GLU	2.1
1	A	43	HIS	2.0
1	A	259	GLU	2.0
1	A	273	ASN	2.0

6.2 Non-standard residues in protein, DNA, RNA chains ⓘ

There are no non-standard protein/DNA/RNA residues in this entry.

6.3 Carbohydrates ⓘ

There are no carbohydrates in this entry.

6.4 Ligands ⓘ

In the following table, the Atoms column lists the number of modelled atoms in the group and the number defined in the chemical component dictionary. LLDF column lists the quality of electron density of the group with respect to its neighbouring residues in protein, DNA or RNA chains. The B-factors column lists the minimum, median, 95th percentile and maximum values of B factors of atoms in the group. The column labelled 'Q< 0.9' lists the number of atoms with occupancy less than 0.9.

Mol	Type	Chain	Res	Atoms	RSCC	RSR	LLDF	B-factors(Å ²)	Q<0.9
5	EDO	D	2002	4/4	0.71	0.25	13.97	39,40,41,43	0
5	EDO	A	2003	4/4	0.86	0.20	12.58	25,28,32,32	0
5	EDO	F	2005	4/4	0.82	0.15	12.21	39,40,40,41	0
3	NA	A	4002	1/1	0.96	0.17	7.05	30,30,30,30	0
4	1PS	F	1001	13/13	0.94	0.18	4.28	27,29,35,36	0
5	EDO	A	2004	4/4	0.85	0.21	2.94	35,36,37,39	0
5	EDO	F	2001	4/4	0.95	0.11	2.77	21,23,24,24	0
6	FMT	C	3007	3/3	0.94	0.13	2.00	31,31,34,37	0
6	FMT	A	3013	3/3	0.94	0.15	1.33	32,32,35,38	0
4	1PS	B	1002	13/13	0.95	0.18	1.22	30,31,34,35	0
6	FMT	A	3010	3/3	0.94	0.14	1.07	25,25,28,30	0
6	FMT	A	3015[A]	3/3	0.96	0.13	0.91	12,12,15,16	3
6	FMT	E	3014	3/3	0.87	0.14	0.68	35,35,37,37	0

Continued on next page...

Continued from previous page...

Mol	Type	Chain	Res	Atoms	RSCC	RSR	LLDF	B-factors(\AA^2)	Q<0.9
6	FMT	B	3006	3/3	0.96	0.17	0.64	20,20,24,25	0
6	FMT	A	3015[B]	3/3	0.96	0.13	0.56	8,8,9,11	3
6	FMT	F	3011	3/3	0.93	0.15	0.41	26,26,32,35	0
3	NA	A	4001	1/1	0.98	0.11	0.37	20,20,20,20	0
3	NA	F	4004	1/1	0.97	0.17	0.29	30,30,30,30	0
6	FMT	E	3002	3/3	0.98	0.07	0.17	14,14,14,14	0
6	FMT	A	3004	3/3	0.97	0.10	0.10	26,26,28,29	0
4	1PS	C	1003	13/13	0.96	0.09	-0.02	13,15,20,22	0
4	1PS	D	1004	13/13	0.98	0.07	-0.21	14,15,20,21	0
6	FMT	D	3003	3/3	0.98	0.06	-0.35	21,21,22,23	0
6	FMT	E	3008	3/3	0.96	0.07	-0.63	26,26,29,32	0
6	FMT	C	3012	3/3	0.99	0.05	-1.06	19,19,23,24	0
3	NA	B	4005	1/1	0.70	0.10	-1.15	52,52,52,52	0
6	FMT	A	3001	3/3	0.99	0.05	-1.60	14,14,15,15	0
6	FMT	A	3009	3/3	0.89	0.26	-	34,34,36,37	0
6	FMT	F	3005	3/3	0.93	0.15	-	39,39,42,43	0
3	NA	A	4003	1/1	0.95	0.40	-	40,40,40,40	0

6.5 Other polymers ⓘ

There are no such residues in this entry.