



Full wwPDB X-ray Structure Validation Report ⓘ

Feb 1, 2016 – 08:12 PM GMT

PDB ID : 4R69
Title : Lactate Dehydrogenase in complex with inhibitor compound 13
Authors : Eigenbrot, C.; Ultsch, M.
Deposited on : 2014-08-22
Resolution : 3.19 Å(reported)

This is a Full wwPDB X-ray Structure Validation Report for a publicly released PDB entry.
We welcome your comments at validation@mail.wwpdb.org
A user guide is available at
<http://wwpdb.org/validation/2016/XrayValidationReportHelp>
with specific help available everywhere you see the ⓘ symbol.

The following versions of software and data (see [references ⓘ](#)) were used in the production of this report:

MolProbity : 4.02b-467
Mogul : 1.7 (RC4), CSD as536be (2015)
Xtriage (Phenix) : 1.9-1692
EDS : rb-20026688
Percentile statistics : 20151230.v01 (using entries in the PDB archive December 30th 2015)
Refmac : 5.8.0135
CCP4 : 6.5.0
Ideal geometry (proteins) : Engh & Huber (2001)
Ideal geometry (DNA, RNA) : Parkinson et al. (1996)
Validation Pipeline (wwPDB-VP) : trunk26865

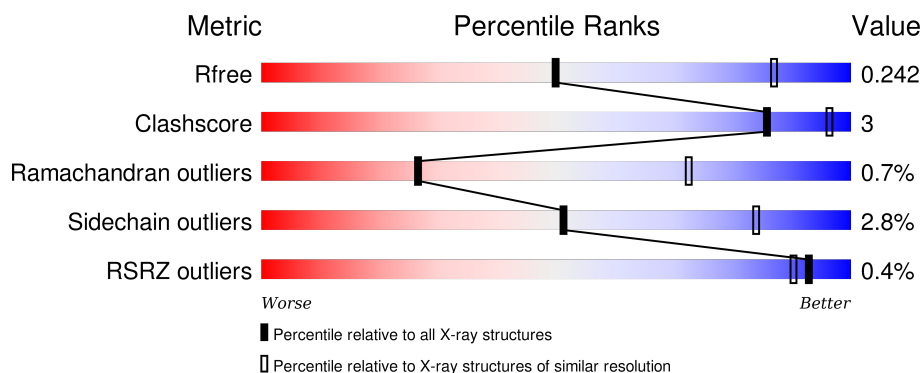
1 Overall quality at a glance ⓘ

The following experimental techniques were used to determine the structure:

X-RAY DIFFRACTION

The reported resolution of this entry is 3.19 Å.

Percentile scores (ranging between 0-100) for global validation metrics of the entry are shown in the following graphic. The table shows the number of entries on which the scores are based.



Metric	Whole archive (#Entries)	Similar resolution (#Entries, resolution range(Å))
R_{free}	91344	1124 (3.24-3.16)
Clashscore	102246	1024 (3.22-3.18)
Ramachandran outliers	100387	1004 (3.22-3.18)
Sidechain outliers	100360	1003 (3.22-3.18)
RSRZ outliers	91569	1129 (3.24-3.16)

The table below summarises the geometric issues observed across the polymeric chains and their fit to the electron density. The red, orange, yellow and green segments on the lower bar indicate the fraction of residues that contain outliers for ≥ 3 , 2, 1 and 0 types of geometric quality criteria. A grey segment represents the fraction of residues that are not modelled. The numeric value for each fraction is indicated below the corresponding segment, with a dot representing fractions $\leq 5\%$. The upper red bar (where present) indicates the fraction of residues that have poor fit to the electron density. The numeric value is given above the bar.

Mol	Chain	Length	Quality of chain
1	A	331	<div> <div>88%</div> <div>9% ..</div> </div>
1	B	331	<div> <div>%</div> <div>87%</div> <div>11% .</div> </div>
1	C	331	<div> <div>%</div> <div>87%</div> <div>12% .</div> </div>
1	D	331	<div> <div>90%</div> <div>7% .</div> </div>

The following table lists non-polymeric compounds, carbohydrate monomers and non-standard

residues in protein, DNA, RNA chains that are outliers for geometric or electron-density-fit criteria:

Mol	Type	Chain	Res	Chirality	Geometry	Clashes	Electron density
2	EPE	A	401	-	-	-	X
5	SO4	D	802	-	-	-	X

2 Entry composition [i](#)

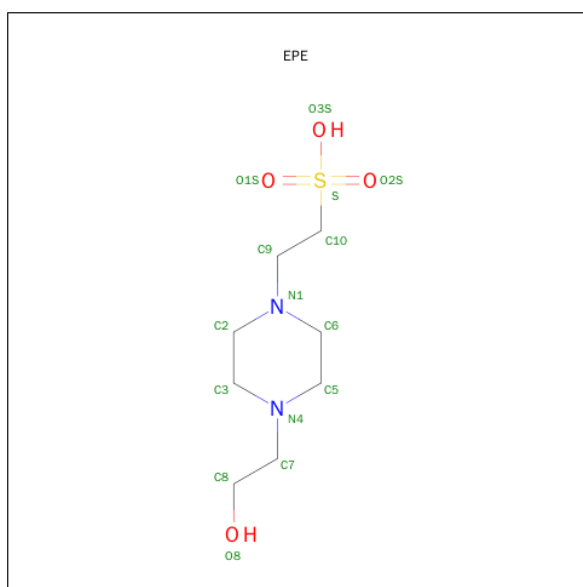
There are 5 unique types of molecules in this entry. The entry contains 10485 atoms, of which 0 are hydrogens and 0 are deuteriums.

In the tables below, the ZeroOcc column contains the number of atoms modelled with zero occupancy, the AltConf column contains the number of residues with at least one atom in alternate conformation and the Trace column contains the number of residues modelled with at most 2 atoms.

- Molecule 1 is a protein called L-lactate dehydrogenase A chain.

Mol	Chain	Residues	Atoms					ZeroOcc	AltConf	Trace
1	A	325	Total	C	N	O	S	0	4	0
			2539	1626	429	470	14			
1	B	324	Total	C	N	O	S	0	3	0
			2532	1626	430	463	13			
1	C	328	Total	C	N	O	S	0	2	0
			2552	1632	435	472	13			
1	D	323	Total	C	N	O	S	0	2	0
			2512	1610	426	463	13			

- Molecule 2 is 4-(2-HYDROXYETHYL)-1-PIPERAZINE ETHANESULFONIC ACID (three-letter code: EPE) (formula: C₈H₁₈N₂O₄S).



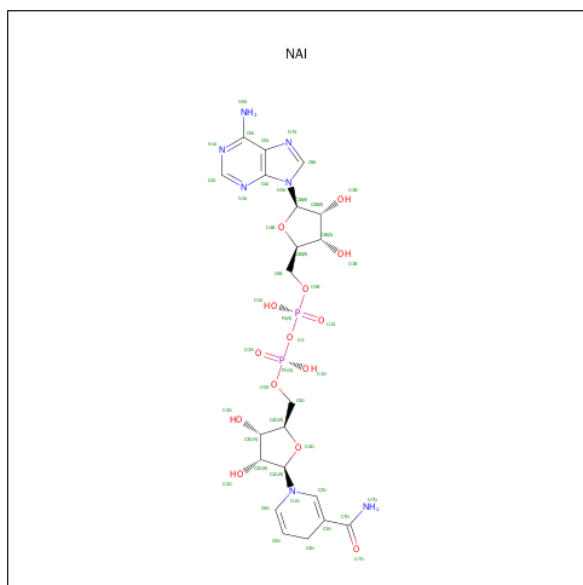
Mol	Chain	Residues	Atoms					ZeroOcc	AltConf
2	A	1	Total	C	N	O	S	0	0
			15	8	2	4	1		
2	B	1	Total	C	N	O	S	0	0
			15	8	2	4	1		

Continued on next page...

Continued from previous page...

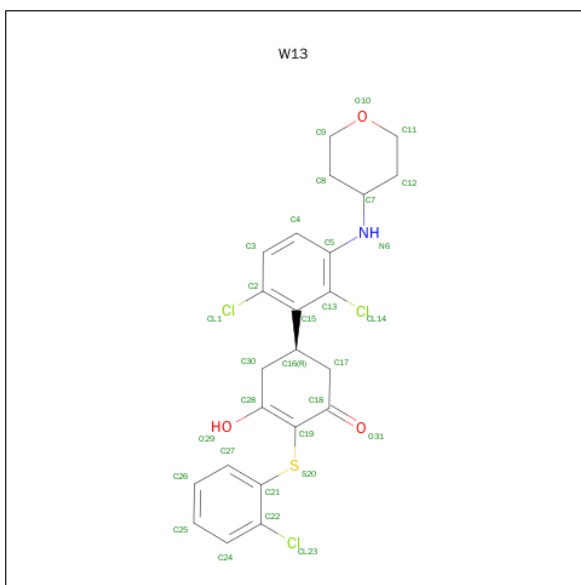
Mol	Chain	Residues	Atoms					ZeroOcc	AltConf
2	C	1	Total	C	N	O	S	0	0
			15	8	2	4	1		

- Molecule 3 is 1,4-DIHYDRONICOTINAMIDE ADENINE DINUCLEOTIDE (three-letter code: NAI) (formula: $C_{21}H_{29}N_7O_{14}P_2$).



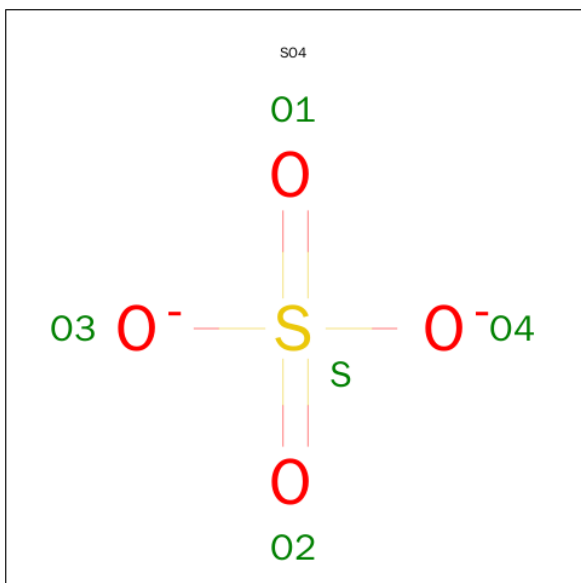
Mol	Chain	Residues	Atoms					ZeroOcc	AltConf
3	A	1	Total	C	N	O	P	0	0
			44	21	7	14	2		
3	B	1	Total	C	N	O	P	0	0
			44	21	7	14	2		
3	C	1	Total	C	N	O	P	0	0
			44	21	7	14	2		
3	D	1	Total	C	N	O	P	0	0
			44	21	7	14	2		

- Molecule 4 is (5R)-2-[(2-CHLOROPHENYL)SULFANYL]-5-[2,6-DICHLORO-3-(TETRAHYDRO-2H-PYRAN-4-YLAMINO)PHENYL]-3-HYDROXYCYCLOHEX-2-EN-1-ONE (three-letter code: W13) (formula: $C_{23}H_{22}Cl_3NO_3S$).



Mol	Chain	Residues	Atoms						ZeroOcc	AltConf
4	A	1	Total 31	C 23	Cl 3	N 1	O 3	S 1	0	0
4	B	1	Total 31	C 23	Cl 3	N 1	O 3	S 1	0	0
4	C	1	Total 31	C 23	Cl 3	N 1	O 3	S 1	0	0
4	D	1	Total 31	C 23	Cl 3	N 1	O 3	S 1	0	0

- Molecule 5 is SULFATE ION (three-letter code: SO4) (formula: O₄S).

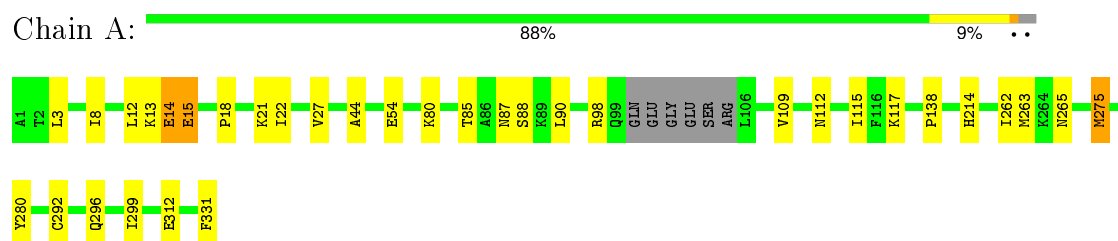


Mol	Chain	Residues	Atoms			ZeroOcc	AltConf
5	D	1	Total	O	S	0	0
			5	4	1		

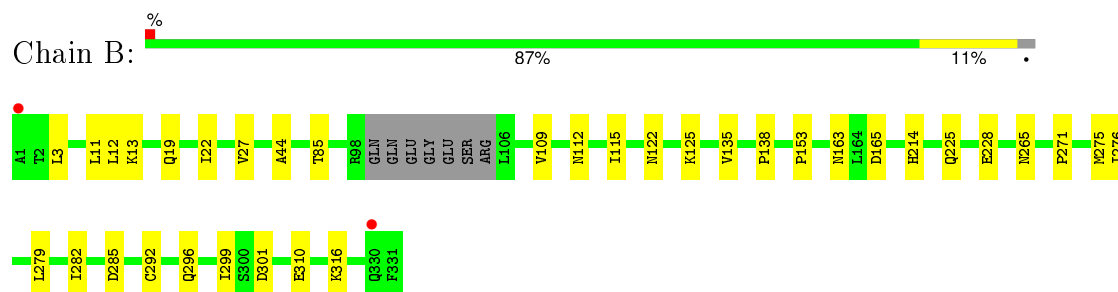
3 Residue-property plots

These plots are drawn for all protein, RNA and DNA chains in the entry. The first graphic for a chain summarises the proportions of errors displayed in the second graphic. The second graphic shows the sequence view annotated by issues in geometry and electron density. Residues are color-coded according to the number of geometric quality criteria for which they contain at least one outlier: green = 0, yellow = 1, orange = 2 and red = 3 or more. A red dot above a residue indicates a poor fit to the electron density ($RSRZ > 2$). Stretches of 2 or more consecutive residues without any outlier are shown as a green connector. Residues present in the sample, but not in the model, are shown in grey.

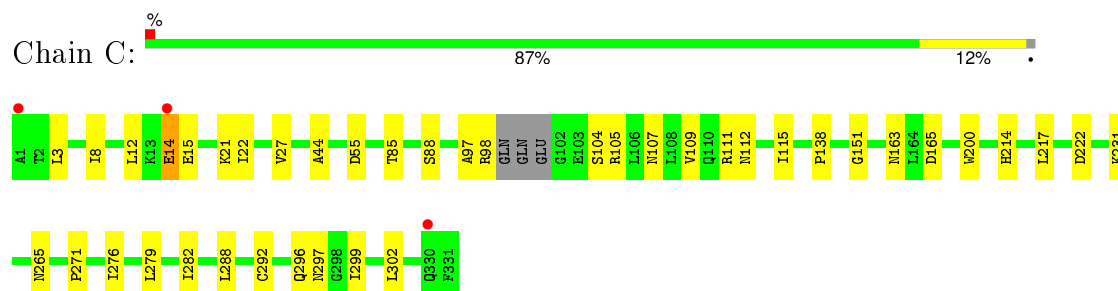
- Molecule 1: L-lactate dehydrogenase A chain



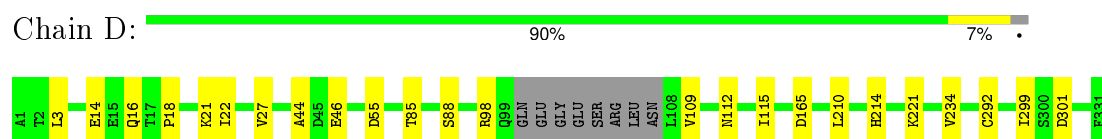
- Molecule 1: L-lactate dehydrogenase A chain



- Molecule 1: L-lactate dehydrogenase A chain



- Molecule 1: L-lactate dehydrogenase A chain



4 Data and refinement statistics

Property	Value	Source
Space group	P 1 21 1	Depositor
Cell constants a, b, c, α , β , γ	75.01Å 80.68Å 101.98Å 90.00° 96.49° 90.00°	Depositor
Resolution (Å)	38.83 – 3.19 38.83 – 3.19	Depositor EDS
% Data completeness (in resolution range)	99.5 (38.83-3.19) 99.5 (38.83-3.19)	Depositor EDS
R_{merge}	(Not available)	Depositor
R_{sym}	0.21	Depositor
$\langle I/\sigma(I) \rangle$ ¹	2.32 (at 3.18Å)	Xtriage
Refinement program	BUSTER 2.11.4	Depositor
R, R_{free}	0.190 , 0.228 0.199 , 0.242	Depositor DCC
R_{free} test set	451 reflections (2.28%)	DCC
Wilson B-factor (Å ²)	43.9	Xtriage
Anisotropy	0.121	Xtriage
Bulk solvent k_{sol} (e/Å ³), B_{sol} (Å ²)	0.29 , 26.4	EDS
Estimated twinning fraction	No twinning to report.	Xtriage
L-test for twinning ²	$\langle L \rangle = 0.47$, $\langle L^2 \rangle = 0.30$	Xtriage
Outliers	0 of 20264 reflections	Xtriage
F_o, F_c correlation	0.91	EDS
Total number of atoms	10485	wwPDB-VP
Average B, all atoms (Å ²)	42.0	wwPDB-VP

Xtriage's analysis on translational NCS is as follows: *The largest off-origin peak in the Patterson function is 4.85% of the height of the origin peak. No significant pseudotranslation is detected.*

¹Intensities estimated from amplitudes.

²Theoretical values of $\langle |L| \rangle$, $\langle L^2 \rangle$ for acentric reflections are 0.5, 0.375 respectively for untwinned datasets, and 0.333, 0.2 for perfectly twinned datasets.

5 Model quality [i](#)

5.1 Standard geometry [i](#)

Bond lengths and bond angles in the following residue types are not validated in this section: NAI, EPE, W13, SO4

The Z score for a bond length (or angle) is the number of standard deviations the observed value is removed from the expected value. A bond length (or angle) with $|Z| > 5$ is considered an outlier worth inspection. RMSZ is the root-mean-square of all Z scores of the bond lengths (or angles).

Mol	Chain	Bond lengths		Bond angles	
		RMSZ	# Z >5	RMSZ	# Z >5
1	A	0.40	0/2594	0.61	0/3507
1	B	0.40	0/2585	0.63	0/3495
1	C	0.41	0/2601	0.61	0/3515
1	D	0.41	0/2561	0.62	0/3463
All	All	0.41	0/10341	0.62	0/13980

There are no bond length outliers.

There are no bond angle outliers.

There are no chirality outliers.

There are no planarity outliers.

5.2 Too-close contacts [i](#)

In the following table, the Non-H and H(model) columns list the number of non-hydrogen atoms and hydrogen atoms in the chain respectively. The H(added) column lists the number of hydrogen atoms added and optimized by MolProbity. The Clashes column lists the number of clashes within the asymmetric unit, whereas Symm-Clashes lists symmetry related clashes.

Mol	Chain	Non-H	H(model)	H(added)	Clashes	Symm-Clashes
1	A	2539	0	2638	19	0
1	B	2532	0	2639	15	0
1	C	2552	0	2650	20	0
1	D	2512	0	2613	13	0
2	A	15	0	17	0	0
2	B	15	0	17	1	0
2	C	15	0	17	1	0
3	A	44	0	27	0	0
3	B	44	0	27	1	0

Continued on next page...

Continued from previous page...

Mol	Chain	Non-H	H(model)	H(added)	Clashes	Symm-Clashes
3	C	44	0	27	0	0
3	D	44	0	27	0	0
4	A	31	0	21	1	0
4	B	31	0	21	1	0
4	C	31	0	21	1	0
4	D	31	0	21	3	0
5	D	5	0	0	0	0
All	All	10485	0	10783	60	0

The all-atom clashscore is defined as the number of clashes found per 1000 atoms (including hydrogen atoms). The all-atom clashscore for this structure is 3.

All (60) close contacts within the same asymmetric unit are listed below, sorted by their clash magnitude.

Atom-1	Atom-2	Interatomic distance (Å)	Clash overlap (Å)
1:C:276:ILE:HG12	1:C:288:LEU:HB2	1.72	0.72
1:A:98:ARG:HB3	4:A:403:W13:H11	1.74	0.68
1:A:18:PRO:HG2	1:A:87:ASN:HB2	1.78	0.63
1:C:98:ARG:HB3	4:C:403:W13:H11	1.82	0.61
1:A:14:GLU:HB3	1:A:15:GLU:CA	2.32	0.60
1:A:214:HIS:HB2	1:B:3:LEU:HD13	1.85	0.57
1:A:8:ILE:CG2	1:D:301:ASP:HB3	2.38	0.54
4:B:403:W13:H5	4:B:403:W13:H1	1.89	0.54
1:B:11:LEU:HD11	1:C:302:LEU:HD23	1.89	0.54
1:A:14:GLU:HB3	1:A:15:GLU:HA	1.90	0.54
1:A:280:TYR:HB3	1:A:312[B]:GLU:HG3	1.90	0.54
1:C:292:CYS:HB3	1:C:299:ILE:HG23	1.91	0.53
1:D:22:ILE:HD12	1:D:44:ALA:HB2	1.91	0.53
1:C:214:HIS:HB2	1:D:3:LEU:HD13	1.91	0.53
1:C:21:LYS:HB3	1:C:88:SER:HA	1.89	0.52
1:A:22:ILE:HD12	1:A:44:ALA:HB2	1.89	0.52
1:A:21:LYS:HB3	1:A:88:SER:HA	1.91	0.52
1:A:109:VAL:HG22	1:A:138:PRO:HG2	1.90	0.52
1:A:3:LEU:HD13	1:B:214:HIS:HB2	1.92	0.52
1:B:22:ILE:HD12	1:B:44:ALA:HB2	1.92	0.51
1:C:22:ILE:HD12	1:C:44:ALA:HB2	1.92	0.51
1:A:90:LEU:HD13	1:A:262:ILE:HG21	1.92	0.51
1:D:292:CYS:HB3	1:D:299:ILE:HG23	1.92	0.50
1:A:292:CYS:HB3	1:A:299:ILE:HG23	1.93	0.50
1:B:153:PRO:HA	2:B:401:EPE:H91	1.94	0.49
1:C:276:ILE:HD13	1:C:282:ILE:HD13	1.94	0.49

Continued on next page...

Continued from previous page...

Atom-1	Atom-2	Interatomic distance (Å)	Clash overlap (Å)
1:C:107:ASN:O	1:C:111:ARG:HB2	2.13	0.48
1:C:151:GLY:O	2:C:401:EPE:H72	2.13	0.47
1:A:112:ASN:HA	1:A:115:ILE:HD12	1.96	0.47
1:A:14:GLU:HB3	1:A:15:GLU:CB	2.45	0.47
1:D:112:ASN:HA	1:D:115:ILE:HD12	1.96	0.47
1:C:109:VAL:HG22	1:C:138:PRO:HG2	1.97	0.47
1:C:12:LEU:HD13	1:C:14:GLU:HB2	1.96	0.46
1:D:234:VAL:HG13	4:D:803:W13:H17	1.97	0.46
1:B:225:GLN:O	1:B:228:GLU:HB2	2.17	0.45
1:C:200:TRP:HB3	1:C:217:LEU:HD23	1.99	0.45
1:D:18:PRO:HB2	1:D:21:LYS:HB2	1.97	0.45
1:D:98:ARG:HD2	4:D:803:W13:H11	1.98	0.44
1:C:105:ARG:O	1:C:109:VAL:HG23	2.17	0.44
1:B:292:CYS:HB3	1:B:299:ILE:HG23	1.99	0.43
1:A:265:ASN:HB2	1:A:296:GLN:HB3	2.00	0.43
1:C:112:ASN:HA	1:C:115:ILE:HD12	2.00	0.43
1:C:3:LEU:HD21	1:D:210:LEU:HG	1.99	0.43
1:A:22:ILE:HD11	1:A:263:MET:HG3	2.01	0.43
1:C:3:LEU:HD13	1:D:214:HIS:HB2	2.01	0.43
1:B:122:ASN:HA	1:B:125:LYS:HE3	2.00	0.42
1:B:109:VAL:HG22	1:B:138:PRO:HG2	2.01	0.42
1:B:276:ILE:HD12	1:B:282:ILE:HG21	2.01	0.42
1:C:265:ASN:HB2	1:C:296:GLN:HB3	2.02	0.42
1:B:265:ASN:HB2	1:B:296:GLN:HB3	2.02	0.42
1:A:117:LYS:HE3	1:A:331:PHE:HA	2.01	0.41
1:B:301:ASP:HB3	1:C:8:ILE:CG2	2.51	0.41
1:D:98:ARG:HB2	4:D:803:W13:H11	2.02	0.41
1:D:21:LYS:HG3	1:D:46:GLU:HB3	2.03	0.41
1:A:14:GLU:CB	1:A:15:GLU:HA	2.50	0.41
1:B:135:VAL:O	3:B:402:NAI:H2N	2.21	0.40
1:B:163:ASN:HA	1:B:271:PRO:HG2	2.04	0.40
1:B:112:ASN:HA	1:B:115:ILE:HD12	2.03	0.40
1:D:21:LYS:HB3	1:D:88:SER:HA	2.03	0.40
1:C:163:ASN:HA	1:C:271:PRO:HG2	2.03	0.40

There are no symmetry-related clashes.

5.3 Torsion angles

5.3.1 Protein backbone

In the following table, the Percentiles column shows the percent Ramachandran outliers of the chain as a percentile score with respect to all X-ray entries followed by that with respect to entries of similar resolution.

The Analysed column shows the number of residues for which the backbone conformation was analysed, and the total number of residues.

Mol	Chain	Analysed	Favoured	Allowed	Outliers	Percentiles	
1	A	325/331 (98%)	304 (94%)	19 (6%)	2 (1%)	30	75
1	B	323/331 (98%)	309 (96%)	12 (4%)	2 (1%)	30	75
1	C	326/331 (98%)	306 (94%)	16 (5%)	4 (1%)	16	60
1	D	321/331 (97%)	302 (94%)	18 (6%)	1 (0%)	46	85
All	All	1295/1324 (98%)	1221 (94%)	65 (5%)	9 (1%)	26	72

All (9) Ramachandran outliers are listed below:

Mol	Chain	Res	Type
1	C	14	GLU
1	C	97	ALA
1	A	275	MET
1	B	275	MET
1	C	222	ASP
1	D	27	VAL
1	A	27	VAL
1	B	27	VAL
1	C	27	VAL

5.3.2 Protein sidechains

In the following table, the Percentiles column shows the percent sidechain outliers of the chain as a percentile score with respect to all X-ray entries followed by that with respect to entries of similar resolution.

The Analysed column shows the number of residues for which the sidechain conformation was analysed, and the total number of residues.

Mol	Chain	Analysed	Rotameric	Outliers	Percentiles	
1	A	286/287 (100%)	278 (97%)	8 (3%)	51	84
1	B	284/287 (99%)	275 (97%)	9 (3%)	46	81

Continued on next page...

Continued from previous page...

Mol	Chain	Analysed	Rotameric	Outliers	Percentiles
1	C	286/287 (100%)	277 (97%)	9 (3%)	47 82
1	D	282/287 (98%)	275 (98%)	7 (2%)	55 86
All	All	1138/1148 (99%)	1105 (97%)	33 (3%)	51 83

All (33) residues with a non-rotameric sidechain are listed below:

Mol	Chain	Res	Type
1	A	12	LEU
1	A	13	LYS
1	A	14	GLU
1	A	15	GLU
1	A	54	GLU
1	A	80	LYS
1	A	85	THR
1	A	275	MET
1	B	12	LEU
1	B	13	LYS
1	B	19	GLN
1	B	85	THR
1	B	165	ASP
1	B	279	LEU
1	B	285	ASP
1	B	310	GLU
1	B	316	LYS
1	C	15	GLU
1	C	55[A]	ASP
1	C	55[B]	ASP
1	C	85	THR
1	C	104	SER
1	C	165	ASP
1	C	231	LYS
1	C	279	LEU
1	C	297	ASN
1	D	14	GLU
1	D	16	GLN
1	D	55	ASP
1	D	85	THR
1	D	109	VAL
1	D	165	ASP
1	D	221	LYS

Some sidechains can be flipped to improve hydrogen bonding and reduce clashes. All (9) such sidechains are listed below:

Mol	Chain	Res	Type
1	A	87	ASN
1	B	19	GLN
1	B	297	ASN
1	B	326	GLN
1	C	16	GLN
1	C	19	GLN
1	C	20	ASN
1	C	296	GLN
1	C	297	ASN

5.3.3 RNA [i](#)

There are no RNA molecules in this entry.

5.4 Non-standard residues in protein, DNA, RNA chains [i](#)

There are no non-standard protein/DNA/RNA residues in this entry.

5.5 Carbohydrates [i](#)

There are no carbohydrates in this entry.

5.6 Ligand geometry [i](#)

12 ligands are modelled in this entry.

In the following table, the Counts columns list the number of bonds (or angles) for which Mogul statistics could be retrieved, the number of bonds (or angles) that are observed in the model and the number of bonds (or angles) that are defined in the chemical component dictionary. The Link column lists molecule types, if any, to which the group is linked. The Z score for a bond length (or angle) is the number of standard deviations the observed value is removed from the expected value. A bond length (or angle) with $|Z| > 2$ is considered an outlier worth inspection. RMSZ is the root-mean-square of all Z scores of the bond lengths (or angles).

Mol	Type	Chain	Res	Link	Bond lengths			Bond angles		
					Counts	RMSZ	$\# Z > 2$	Counts	RMSZ	$\# Z > 2$
2	EPE	A	401	-	14,15,15	0.28	0	18,20,20	0.48	0
3	NAI	A	402	-	38,48,48	0.66	1 (2%)	48,73,73	1.17	5 (10%)
4	W13	A	403	-	33,34,34	0.71	0	42,48,48	1.85	13 (30%)

Mol	Type	Chain	Res	Link	Bond lengths			Bond angles		
					Counts	RMSZ	# Z > 2	Counts	RMSZ	# Z > 2
2	EPE	B	401	-	14,15,15	0.21	0	18,20,20	0.28	0
3	NAI	B	402	-	38,48,48	0.63	1 (2%)	48,73,73	1.20	5 (10%)
4	W13	B	403	-	33,34,34	0.76	0	42,48,48	2.06	12 (28%)
2	EPE	C	401	-	14,15,15	0.30	0	18,20,20	0.43	0
3	NAI	C	402	-	38,48,48	0.64	1 (2%)	48,73,73	1.19	5 (10%)
4	W13	C	403	-	33,34,34	0.83	1 (3%)	42,48,48	1.78	11 (26%)
3	NAI	D	801	-	38,48,48	0.65	1 (2%)	48,73,73	1.19	5 (10%)
5	SO4	D	802	-	4,4,4	0.19	0	6,6,6	0.13	0
4	W13	D	803	-	33,34,34	0.85	1 (3%)	42,48,48	2.05	13 (30%)

In the following table, the Chirals column lists the number of chiral outliers, the number of chiral centers analysed, the number of these observed in the model and the number defined in the chemical component dictionary. Similar counts are reported in the Torsion and Rings columns. '-' means no outliers of that kind were identified.

Mol	Type	Chain	Res	Link	Chirals	Torsions	Rings
2	EPE	A	401	-	-	0/9/19/19	0/1/1/1
3	NAI	A	402	-	-	0/25/72/72	0/5/5/5
4	W13	A	403	-	-	0/12/36/36	0/4/4/4
2	EPE	B	401	-	-	0/9/19/19	0/1/1/1
3	NAI	B	402	-	-	0/25/72/72	0/5/5/5
4	W13	B	403	-	-	0/12/36/36	0/4/4/4
2	EPE	C	401	-	-	0/9/19/19	0/1/1/1
3	NAI	C	402	-	-	0/25/72/72	0/5/5/5
4	W13	C	403	-	-	0/12/36/36	0/4/4/4
3	NAI	D	801	-	-	0/25/72/72	0/5/5/5
5	SO4	D	802	-	-	0/0/0/0	0/0/0/0
4	W13	D	803	-	-	0/12/36/36	0/4/4/4

All (6) bond length outliers are listed below:

Mol	Chain	Res	Type	Atoms	Z	Observed(Å)	Ideal(Å)
4	C	403	W13	C5-N6	2.16	1.42	1.37
4	D	803	W13	C5-N6	2.27	1.42	1.37
3	C	402	NAI	C6N-N1N	2.30	1.44	1.37
3	B	402	NAI	C6N-N1N	2.39	1.44	1.37
3	A	402	NAI	C6N-N1N	2.45	1.44	1.37
3	D	801	NAI	C6N-N1N	2.51	1.44	1.37

All (69) bond angle outliers are listed below:

Mol	Chain	Res	Type	Atoms	Z	Observed(°)	Ideal(°)
4	A	403	W13	C3-C2-C15	-3.10	118.53	122.45
3	C	402	NAI	PN-O3-PA	-2.96	124.42	132.73
4	B	403	W13	C3-C2-C15	-2.95	118.73	122.45
3	A	402	NAI	PN-O3-PA	-2.93	124.51	132.73
3	B	402	NAI	PN-O3-PA	-2.91	124.56	132.73
4	D	803	W13	C3-C2-C15	-2.89	118.80	122.45
3	D	801	NAI	PN-O3-PA	-2.87	124.68	132.73
4	C	403	W13	C3-C2-C15	-2.67	119.07	122.45
4	A	403	W13	C16-C17-C18	-2.64	107.70	113.19
4	C	403	W13	C16-C17-C18	-2.63	107.71	113.19
4	B	403	W13	C16-C17-C18	-2.61	107.75	113.19
4	D	803	W13	C15-C13-CL14	-2.52	117.97	120.26
4	B	403	W13	C13-C15-C16	-2.04	115.62	123.17
4	D	803	W13	C16-C17-C18	-2.02	108.98	113.19
4	D	803	W13	C15-C2-CL1	2.07	122.59	120.45
3	B	402	NAI	O1N-PN-O3	2.07	114.50	105.09
3	C	402	NAI	O1N-PN-O3	2.08	114.55	105.09
3	A	402	NAI	O1N-PN-O3	2.10	114.61	105.09
4	B	403	W13	C11-O10-C9	2.14	117.11	109.89
4	C	403	W13	C15-C2-CL1	2.17	122.69	120.45
4	C	403	W13	C21-S20-C19	2.19	105.16	102.56
4	A	403	W13	C17-C16-C15	2.20	116.77	112.55
4	C	403	W13	C17-C16-C15	2.21	116.79	112.55
3	D	801	NAI	O1N-PN-O3	2.23	115.20	105.09
4	A	403	W13	C12-C7-C8	2.23	114.63	110.82
4	A	403	W13	C11-O10-C9	2.31	117.69	109.89
4	A	403	W13	C12-C7-N6	2.33	114.53	110.55
4	D	803	W13	C17-C18-C19	2.35	120.65	116.17
4	D	803	W13	C11-O10-C9	2.36	117.83	109.89
4	A	403	W13	C21-S20-C19	2.51	105.54	102.56
4	C	403	W13	C17-C18-C19	2.57	121.07	116.17
4	D	803	W13	O29-C28-C30	2.58	116.64	113.25
4	A	403	W13	C17-C18-C19	2.66	121.25	116.17
4	B	403	W13	C4-C5-N6	2.70	126.56	122.17
3	A	402	NAI	C2D-C1D-N1N	2.72	120.69	113.34
4	B	403	W13	C17-C18-C19	2.83	121.55	116.17
3	C	402	NAI	C2D-C1D-N1N	2.84	121.01	113.34
3	D	801	NAI	C2D-C1D-N1N	2.88	121.12	113.34
4	C	403	W13	C2-C15-C13	2.88	118.82	114.95
3	B	402	NAI	C2D-C1D-N1N	2.90	121.17	113.34
4	B	403	W13	O29-C28-C30	2.99	117.19	113.25
3	B	402	NAI	O5B-PA-O1A	3.02	121.33	109.62
4	D	803	W13	C12-C7-N6	3.07	115.78	110.55

Continued on next page...

Continued from previous page...

Mol	Chain	Res	Type	Atoms	Z	Observed(°)	Ideal(°)
4	A	403	W13	O29-C28-C30	3.08	117.30	113.25
3	D	801	NAI	O5B-PA-O1A	3.09	121.62	109.62
3	C	402	NAI	O5B-PA-O1A	3.10	121.64	109.62
4	C	403	W13	C5-N6-C7	3.11	129.80	125.03
3	A	402	NAI	O5B-PA-O1A	3.12	121.74	109.62
4	D	803	W13	C2-C15-C13	3.32	119.40	114.95
4	A	403	W13	C15-C2-CL1	3.32	123.88	120.45
3	D	801	NAI	O4D-C1D-N1N	3.38	115.21	108.07
3	C	402	NAI	O4D-C1D-N1N	3.42	115.30	108.07
3	A	402	NAI	O4D-C1D-N1N	3.43	115.30	108.07
4	D	803	W13	C30-C16-C15	3.47	119.21	112.55
4	C	403	W13	O29-C28-C30	3.53	117.90	113.25
4	C	403	W13	C30-C16-C15	3.54	119.35	112.55
3	B	402	NAI	O4D-C1D-N1N	3.55	115.57	108.07
4	A	403	W13	C2-C15-C13	3.61	119.79	114.95
4	A	403	W13	C5-N6-C7	3.62	130.58	125.03
4	C	403	W13	C12-C7-C8	3.93	117.52	110.82
4	B	403	W13	C21-S20-C19	4.13	107.46	102.56
4	B	403	W13	C2-C15-C13	4.17	120.55	114.95
4	B	403	W13	C30-C16-C15	4.73	121.63	112.55
4	B	403	W13	C8-C7-N6	4.79	118.71	110.55
4	D	803	W13	C5-N6-C7	4.99	132.68	125.03
4	A	403	W13	C8-C7-N6	4.99	119.06	110.55
4	D	803	W13	C21-S20-C19	5.00	108.49	102.56
4	B	403	W13	C5-N6-C7	5.28	133.13	125.03
4	D	803	W13	C8-C7-N6	5.86	120.53	110.55

There are no chirality outliers.

There are no torsion outliers.

There are no ring outliers.

7 monomers are involved in 9 short contacts:

Mol	Chain	Res	Type	Clashes	Symm-Clashes
4	A	403	W13	1	0
2	B	401	EPE	1	0
3	B	402	NAI	1	0
4	B	403	W13	1	0
2	C	401	EPE	1	0
4	C	403	W13	1	0
4	D	803	W13	3	0

5.7 Other polymers

There are no such residues in this entry.

5.8 Polymer linkage issues

There are no chain breaks in this entry.

6 Fit of model and data [i](#)

6.1 Protein, DNA and RNA chains [i](#)

In the following table, the column labelled ‘#RSRZ> 2’ contains the number (and percentage) of RSRZ outliers, followed by percent RSRZ outliers for the chain as percentile scores relative to all X-ray entries and entries of similar resolution. The OWAB column contains the minimum, median, 95th percentile and maximum values of the occupancy-weighted average B-factor per residue. The column labelled ‘Q< 0.9’ lists the number of (and percentage) of residues with an average occupancy less than 0.9.

Mol	Chain	Analysed	<RSRZ>	#RSRZ>2	OWAB(Å ²)	Q<0.9
1	A	325/331 (98%)	-0.40	0 100 100	26, 40, 61, 78	0
1	B	324/331 (97%)	-0.39	2 (0%) 90 84	25, 41, 62, 95	0
1	C	328/331 (99%)	-0.35	3 (0%) 85 78	24, 40, 62, 93	0
1	D	323/331 (97%)	-0.43	0 100 100	21, 36, 57, 87	0
All	All	1300/1324 (98%)	-0.39	5 (0%) 93 90	21, 39, 62, 95	0

All (5) RSRZ outliers are listed below:

Mol	Chain	Res	Type	RSRZ
1	C	330	GLN	3.3
1	B	330	GLN	3.2
1	B	1	ALA	2.5
1	C	1	ALA	2.4
1	C	14	GLU	2.0

6.2 Non-standard residues in protein, DNA, RNA chains [i](#)

There are no non-standard protein/DNA/RNA residues in this entry.

6.3 Carbohydrates [i](#)

There are no carbohydrates in this entry.

6.4 Ligands [i](#)

In the following table, the Atoms column lists the number of modelled atoms in the group and the number defined in the chemical component dictionary. LLDF column lists the quality of electron density of the group with respect to its neighbouring residues in protein, DNA or RNA chains.

The B-factors column lists the minimum, median, 95th percentile and maximum values of B factors of atoms in the group. The column labelled 'Q< 0.9' lists the number of atoms with occupancy less than 0.9.

Mol	Type	Chain	Res	Atoms	RSCC	RSR	LLDF	B-factors(Å ²)	Q<0.9
5	SO4	D	802	5/5	0.90	0.24	3.08	87,88,89,90	0
2	EPE	A	401	15/15	0.84	0.33	2.77	35,37,39,39	15
4	W13	A	403	31/31	0.92	0.24	1.86	45,51,64,65	0
4	W13	C	403	31/31	0.92	0.21	1.15	34,37,50,51	0
2	EPE	B	401	15/15	0.91	0.21	0.83	52,58,60,60	15
2	EPE	C	401	15/15	0.85	0.27	0.78	56,62,66,66	15
3	NAI	B	402	44/44	0.94	0.17	-0.25	33,36,43,46	0
4	W13	D	803	31/31	0.95	0.16	-0.39	28,34,41,46	0
4	W13	B	403	31/31	0.95	0.18	-0.40	33,36,40,43	0
3	NAI	D	801	44/44	0.95	0.17	-0.46	28,37,42,42	0
3	NAI	C	402	44/44	0.96	0.15	-0.58	37,40,46,47	0
3	NAI	A	402	44/44	0.96	0.14	-0.87	28,41,44,44	0

6.5 Other polymers [i](#)

There are no such residues in this entry.