



# wwPDB X-ray Structure Validation Summary Report ⓘ

Feb 19, 2016 – 07:17 PM GMT

PDB ID : 4R6L  
Title : Crystal structure of bacteriophytochrome RpBphP2 from photosynthetic bacterium *R. palustris*  
Authors : Yang, X.; Stojkovic, E.; Ozarowski, W.; Kuk, J.; Davydova, E.; Moffat, K.  
Deposited on : 2014-08-25  
Resolution : 3.40 Å(reported)

This is a wwPDB X-ray Structure Validation Summary Report for a publicly released PDB entry.  
We welcome your comments at [validation@mail.wwpdb.org](mailto:validation@mail.wwpdb.org)  
A user guide is available at  
<http://wwpdb.org/validation/2016/XrayValidationReportHelp>  
with specific help available everywhere you see the ⓘ symbol.

---

The following versions of software and data (see [references ⓘ](#)) were used in the production of this report:

MolProbity : 4.02b-467  
Mogul : 1.7.1 (RC1), CSD as537be (2016)  
Xtriage (Phenix) : 1.9-1692  
EDS : rb-20026982  
Percentile statistics : 20151230.v01 (using entries in the PDB archive December 30th 2015)  
Refmac : 5.8.0135  
CCP4 : 6.5.0  
Ideal geometry (proteins) : Engh & Huber (2001)  
Ideal geometry (DNA, RNA) : Parkinson et al. (1996)  
Validation Pipeline (wwPDB-VP) : rb-20026982

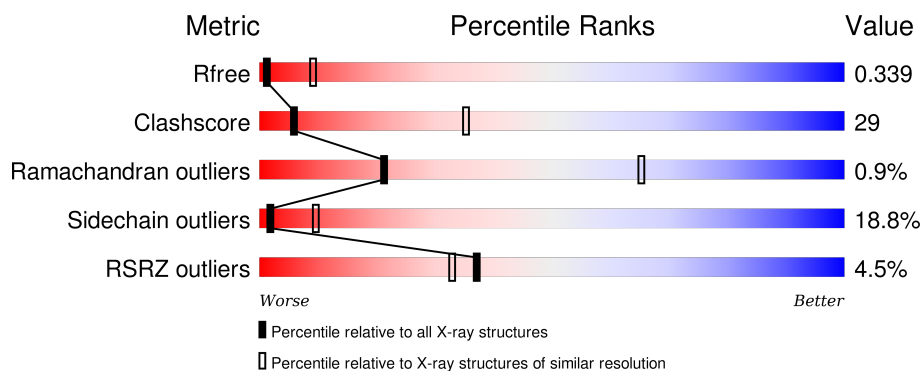
# 1 Overall quality at a glance ⓘ

The following experimental techniques were used to determine the structure:

## *X-RAY DIFFRACTION*

The reported resolution of this entry is 3.40 Å.

Percentile scores (ranging between 0-100) for global validation metrics of the entry are shown in the following graphic. The table shows the number of entries on which the scores are based.



Metric	Whole archive (#Entries)	Similar resolution (#Entries, resolution range(Å))
$R_{free}$	91344	1476 (3.50-3.30)
Clashscore	102246	1611 (3.50-3.30)
Ramachandran outliers	100387	1571 (3.50-3.30)
Sidechain outliers	100360	1571 (3.50-3.30)
RSRZ outliers	91569	1485 (3.50-3.30)

The table below summarises the geometric issues observed across the polymeric chains and their fit to the electron density. The red, orange, yellow and green segments on the lower bar indicate the fraction of residues that contain outliers for  $\geq 3$ , 2, 1 and 0 types of geometric quality criteria. A grey segment represents the fraction of residues that are not modelled. The numeric value for each fraction is indicated below the corresponding segment, with a dot representing fractions  $\leq 5\%$ . The upper red bar (where present) indicates the fraction of residues that have poor fit to the electron density. The numeric value is given above the bar.

Mol	Chain	Length	Quality of chain
1	A	519	<div> <div>2%</div> <div>42%</div> <div>39%</div> <div>10%</div> <div>9%</div> </div>
1	B	519	<div> <div>6%</div> <div>37%</div> <div>38%</div> <div>11%</div> <div>14%</div> </div>

The following table lists non-polymeric compounds, carbohydrate monomers and non-standard residues in protein, DNA, RNA chains that are outliers for geometric or electron-density-fit criteria:

Mol	Type	Chain	Res	Chirality	Geometry	Clashes	Electron density
2	BLA	A	900	-	-	-	X
2	BLA	B	900	-	-	-	X

## 2 Entry composition

There are 2 unique types of molecules in this entry. The entry contains 7198 atoms, of which 0 are hydrogens and 0 are deuteriums.

In the tables below, the ZeroOcc column contains the number of atoms modelled with zero occupancy, the AltConf column contains the number of residues with at least one atom in alternate conformation and the Trace column contains the number of residues modelled with at most 2 atoms.

- Molecule 1 is a protein called Bacteriophytochrome (Light-regulated signal transduction histidine kinase), PhyB1.

Mol	Chain	Residues	Atoms					ZeroOcc	AltConf	Trace
1	A	473	Total	C	N	O	S	0	0	0
			3639	2295	659	671	14			
1	B	448	Total	C	N	O	S	0	0	0
			3473	2191	627	641	14			

There are 26 discrepancies between the modelled and reference sequences:

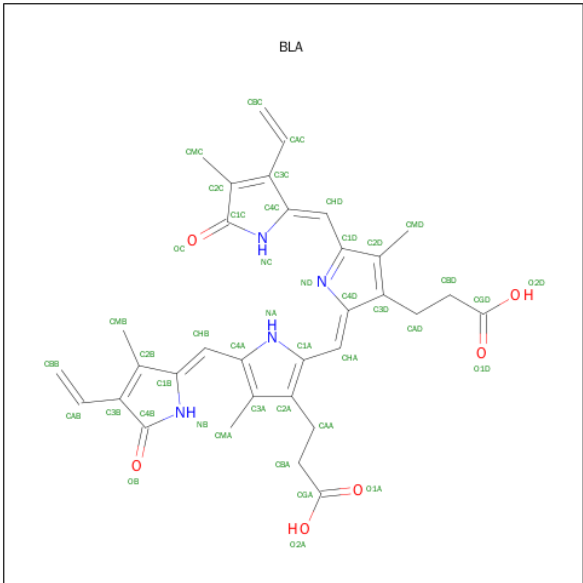
Chain	Residue	Modelled	Actual	Comment	Reference
A	507	LYS	-	EXPRESSION TAG	UNP Q6N5G3
A	508	LEU	-	EXPRESSION TAG	UNP Q6N5G3
A	509	ALA	-	EXPRESSION TAG	UNP Q6N5G3
A	510	ALA	-	EXPRESSION TAG	UNP Q6N5G3
A	511	ALA	-	EXPRESSION TAG	UNP Q6N5G3
A	512	LEU	-	EXPRESSION TAG	UNP Q6N5G3
A	513	GLU	-	EXPRESSION TAG	UNP Q6N5G3
A	514	HIS	-	EXPRESSION TAG	UNP Q6N5G3
A	515	HIS	-	EXPRESSION TAG	UNP Q6N5G3
A	516	HIS	-	EXPRESSION TAG	UNP Q6N5G3
A	517	HIS	-	EXPRESSION TAG	UNP Q6N5G3
A	518	HIS	-	EXPRESSION TAG	UNP Q6N5G3
A	519	HIS	-	EXPRESSION TAG	UNP Q6N5G3
B	507	LYS	-	EXPRESSION TAG	UNP Q6N5G3
B	508	LEU	-	EXPRESSION TAG	UNP Q6N5G3
B	509	ALA	-	EXPRESSION TAG	UNP Q6N5G3
B	510	ALA	-	EXPRESSION TAG	UNP Q6N5G3
B	511	ALA	-	EXPRESSION TAG	UNP Q6N5G3
B	512	LEU	-	EXPRESSION TAG	UNP Q6N5G3
B	513	GLU	-	EXPRESSION TAG	UNP Q6N5G3
B	514	HIS	-	EXPRESSION TAG	UNP Q6N5G3
B	515	HIS	-	EXPRESSION TAG	UNP Q6N5G3
B	516	HIS	-	EXPRESSION TAG	UNP Q6N5G3
B	517	HIS	-	EXPRESSION TAG	UNP Q6N5G3

*Continued on next page...*

Continued from previous page...

Chain	Residue	Modelled	Actual	Comment	Reference
B	518	HIS	-	EXPRESSION TAG	UNP Q6N5G3
B	519	HIS	-	EXPRESSION TAG	UNP Q6N5G3

- Molecule 2 is BILIVERDINE IX ALPHA (three-letter code: BLA) (formula: C<sub>33</sub>H<sub>34</sub>N<sub>4</sub>O<sub>6</sub>).

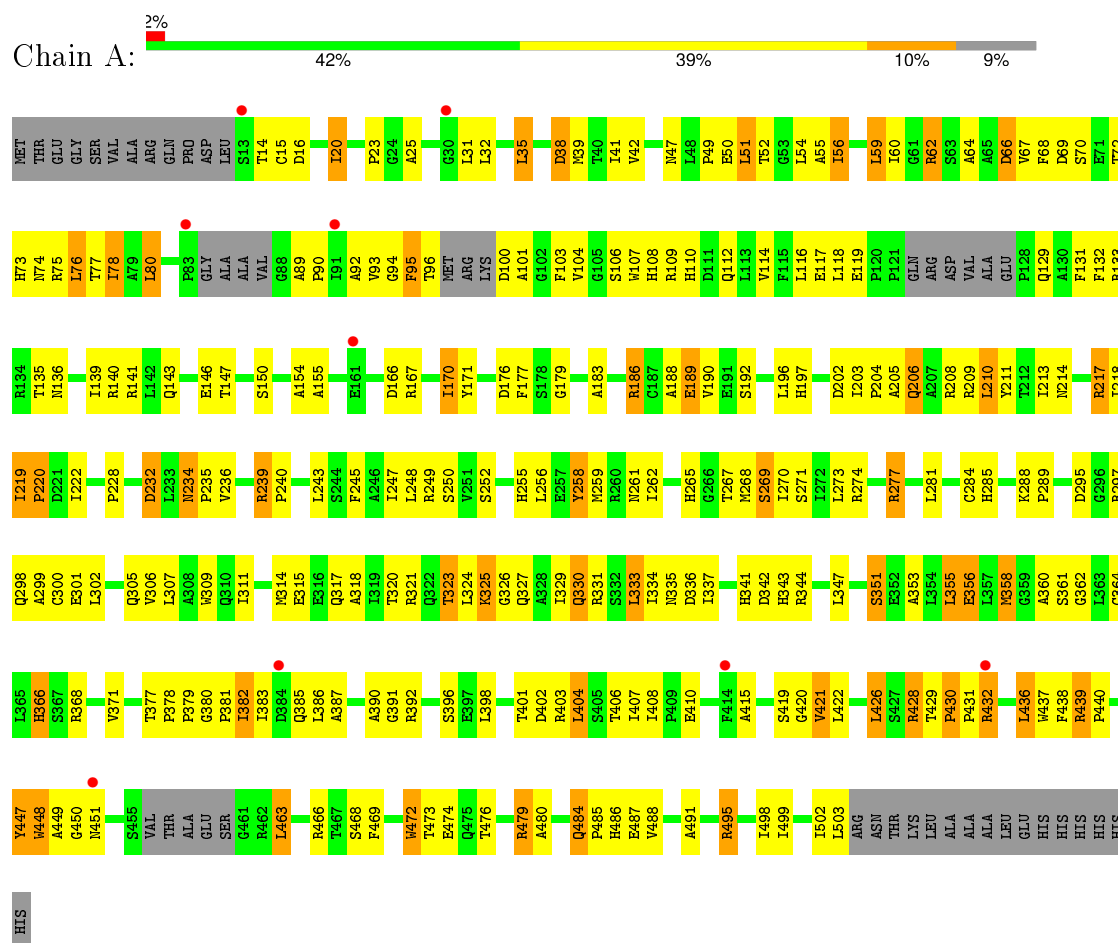


Mol	Chain	Residues	Atoms				ZeroOcc	AltConf
2	A	1	Total	C	N	O	0	0
			43	33	4	6		
2	B	1	Total	C	N	O	0	0
			43	33	4	6		

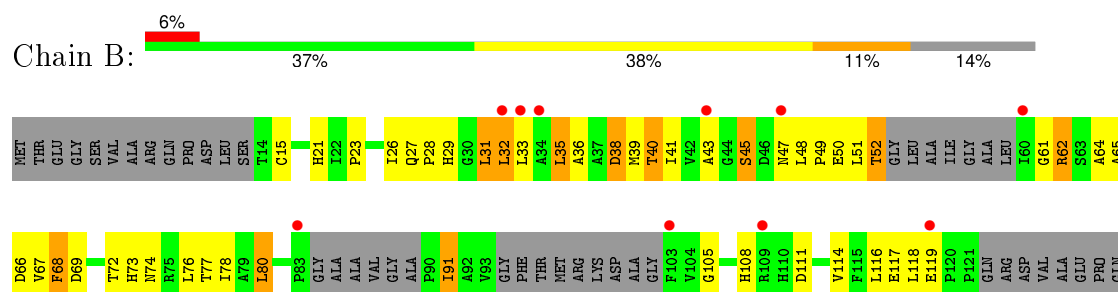
### 3 Residue-property plots [i](#)

These plots are drawn for all protein, RNA and DNA chains in the entry. The first graphic for a chain summarises the proportions of errors displayed in the second graphic. The second graphic shows the sequence view annotated by issues in geometry and electron density. Residues are color-coded according to the number of geometric quality criteria for which they contain at least one outlier: green = 0, yellow = 1, orange = 2 and red = 3 or more. A red dot above a residue indicates a poor fit to the electron density ( $RSRZ > 2$ ). Stretches of 2 or more consecutive residues without any outlier are shown as a green connector. Residues present in the sample, but not in the model, are shown in grey.

- Molecule 1: Bacteriophytochrome (Light-regulated signal transduction histidine kinase), PhyB1



- Molecule 1: Bacteriophytochrome (Light-regulated signal transduction histidine kinase), PhyB1





## 4 Data and refinement statistics

Property	Value	Source
Space group	P 61	Depositor
Cell constants a, b, c, $\alpha$ , $\beta$ , $\gamma$	174.40 Å 174.40 Å 95.67 Å 90.00° 90.00° 120.00°	Depositor
Resolution (Å)	49.02 – 3.40 49.02 – 3.40	Depositor EDS
% Data completeness (in resolution range)	95.3 (49.02-3.40) 95.5 (49.02-3.40)	Depositor EDS
$R_{merge}$	0.06	Depositor
$R_{sym}$	(Not available)	Depositor
$\langle I/\sigma(I) \rangle$ <sup>1</sup>	1.28 (at 3.40 Å)	Xtriage
Refinement program	PHENIX (phenix.refine: 1.9_1692)	Depositor
R, $R_{free}$	0.268 , 0.322 0.290 , 0.339	Depositor DCC
$R_{free}$ test set	1121 reflections (5.36%)	DCC
Wilson B-factor (Å <sup>2</sup> )	114.4	Xtriage
Anisotropy	0.435	Xtriage
Bulk solvent $k_{sol}$ (e/Å <sup>3</sup> ), $B_{sol}$ (Å <sup>2</sup> )	0.28 , 91.7	EDS
Estimated twinning fraction	0.105 for h,-h-k,-l	Xtriage
L-test for twinning <sup>2</sup>	$\langle  L  \rangle = 0.41$ , $\langle L^2 \rangle = 0.23$	Xtriage
Outliers	0 of 22049 reflections	Xtriage
$F_o, F_c$ correlation	0.91	EDS
Total number of atoms	7198	wwPDB-VP
Average B, all atoms (Å <sup>2</sup> )	156.0	wwPDB-VP

Xtriage's analysis on translational NCS is as follows: *The largest off-origin peak in the Patterson function is 2.72% of the height of the origin peak. No significant pseudotranslation is detected.*

<sup>1</sup>Intensities estimated from amplitudes.

<sup>2</sup>Theoretical values of  $\langle |L| \rangle$ ,  $\langle L^2 \rangle$  for acentric reflections are 0.5, 0.375 respectively for untwinned datasets, and 0.333, 0.2 for perfectly twinned datasets.



## 5 Model quality

### 5.1 Standard geometry

Bond lengths and bond angles in the following residue types are not validated in this section: BLA

The Z score for a bond length (or angle) is the number of standard deviations the observed value is removed from the expected value. A bond length (or angle) with  $|Z| > 5$  is considered an outlier worth inspection. RMSZ is the root-mean-square of all Z scores of the bond lengths (or angles).

Mol	Chain	Bond lengths		Bond angles	
		RMSZ	$\# Z  > 5$	RMSZ	$\# Z  > 5$
1	A	0.40	0/3716	0.83	3/5057 (0.1%)
1	B	0.43	0/3546	0.87	6/4825 (0.1%)
All	All	0.41	0/7262	0.85	9/9882 (0.1%)

Chiral center outliers are detected by calculating the chiral volume of a chiral center and verifying if the center is modelled as a planar moiety or with the opposite hand. A planarity outlier is detected by checking planarity of atoms in a peptide group, atoms in a mainchain group or atoms of a sidechain that are expected to be planar.

Mol	Chain	#Chirality outliers	#Planarity outliers
1	A	0	1
1	B	0	3
All	All	0	4

There are no bond length outliers.

The worst 5 of 9 bond angle outliers are listed below:

Mol	Chain	Res	Type	Atoms	Z	Observed(°)	Ideal(°)
1	A	355	LEU	CA-CB-CG	6.93	131.24	115.30
1	B	333	LEU	CB-CG-CD1	6.18	121.51	111.00
1	A	89	ALA	C-N-CD	-5.63	108.21	120.60
1	B	354	LEU	CA-CB-CG	5.58	128.13	115.30
1	A	273	LEU	CA-CB-CG	5.28	127.44	115.30

There are no chirality outliers.

All (4) planarity outliers are listed below:

Mol	Chain	Res	Type	Group
1	A	341	HIS	Peptide

*Continued on next page...*

*Continued from previous page...*

Mol	Chain	Res	Type	Group
1	B	38	ASP	Peptide
1	B	426	LEU	Peptide
1	B	68	PHE	Peptide

## 5.2 Too-close contacts [i](#)

In the following table, the Non-H and H(model) columns list the number of non-hydrogen atoms and hydrogen atoms in the chain respectively. The H(added) column lists the number of hydrogen atoms added and optimized by MolProbity. The Clashes column lists the number of clashes within the asymmetric unit, whereas Symm-Clashes lists symmetry related clashes.

Mol	Chain	Non-H	H(model)	H(added)	Clashes	Symm-Clashes
1	A	3639	0	3625	197	0
1	B	3473	0	3453	220	0
2	A	43	0	31	5	0
2	B	43	0	31	7	0
All	All	7198	0	7140	412	0

The all-atom clashscore is defined as the number of clashes found per 1000 atoms (including hydrogen atoms). The all-atom clashscore for this structure is 29.

The worst 5 of 412 close contacts within the same asymmetric unit are listed below, sorted by their clash magnitude.

Atom-1	Atom-2	Interatomic distance (Å)	Clash overlap (Å)
1:B:202:ASP:OD1	1:B:466:ARG:NH2	1.95	1.00
1:B:274:ARG:NH1	1:B:308:ALA:O	1.99	0.94
1:A:75:ARG:NH2	1:A:92:ALA:O	2.01	0.94
1:B:330:GLN:NE2	1:B:493:GLU:OE2	2.01	0.93
1:B:451:ASN:OD1	1:B:453:ASP:N	2.05	0.90

There are no symmetry-related clashes.

## 5.3 Torsion angles [i](#)

### 5.3.1 Protein backbone [i](#)

In the following table, the Percentiles column shows the percent Ramachandran outliers of the chain as a percentile score with respect to all X-ray entries followed by that with respect to entries of similar resolution.

The Analysed column shows the number of residues for which the backbone conformation was analysed, and the total number of residues.

Mol	Chain	Analysed	Favoured	Allowed	Outliers	Percentiles	
1	A	463/519 (89%)	429 (93%)	30 (6%)	4 (1%)	21	65
1	B	436/519 (84%)	398 (91%)	34 (8%)	4 (1%)	21	65
All	All	899/1038 (87%)	827 (92%)	64 (7%)	8 (1%)	21	65

5 of 8 Ramachandran outliers are listed below:

Mol	Chain	Res	Type
1	A	90	PRO
1	A	379	PRO
1	A	430	PRO
1	B	111	ASP
1	B	379	PRO

### 5.3.2 Protein sidechains ⓘ

In the following table, the Percentiles column shows the percent sidechain outliers of the chain as a percentile score with respect to all X-ray entries followed by that with respect to entries of similar resolution.

The Analysed column shows the number of residues for which the sidechain conformation was analysed, and the total number of residues.

Mol	Chain	Analysed	Rotameric	Outliers	Percentiles	
1	A	382/418 (91%)	313 (82%)	69 (18%)	2	11
1	B	368/418 (88%)	296 (80%)	72 (20%)	1	8
All	All	750/836 (90%)	609 (81%)	141 (19%)	2	9

5 of 141 residues with a non-rotameric sidechain are listed below:

Mol	Chain	Res	Type
1	A	472	TRP
1	B	91	ILE
1	B	451	ASN
1	A	479	ARG
1	B	35	LEU

Some sidechains can be flipped to improve hydrogen bonding and reduce clashes. All (5) such sidechains are listed below:

Mol	Chain	Res	Type
1	A	305	GLN
1	A	330	GLN
1	B	29	HIS
1	B	143	GLN
1	B	255	HIS

### 5.3.3 RNA [i](#)

There are no RNA molecules in this entry.

### 5.4 Non-standard residues in protein, DNA, RNA chains [i](#)

There are no non-standard protein/DNA/RNA residues in this entry.

### 5.5 Carbohydrates [i](#)

There are no carbohydrates in this entry.

### 5.6 Ligand geometry [i](#)

2 ligands are modelled in this entry.

In the following table, the Counts columns list the number of bonds (or angles) for which Mogul statistics could be retrieved, the number of bonds (or angles) that are observed in the model and the number of bonds (or angles) that are defined in the chemical component dictionary. The Link column lists molecule types, if any, to which the group is linked. The Z score for a bond length (or angle) is the number of standard deviations the observed value is removed from the expected value. A bond length (or angle) with  $|Z| > 2$  is considered an outlier worth inspection. RMSZ is the root-mean-square of all Z scores of the bond lengths (or angles).

Mol	Type	Chain	Res	Link	Bond lengths			Bond angles		
					Counts	RMSZ	$\# Z  > 2$	Counts	RMSZ	$\# Z  > 2$
2	BLA	A	900	1	36,46,46	2.99	16 (44%)	45,67,67	1.82	13 (28%)
2	BLA	B	900	1	36,46,46	3.10	14 (38%)	45,67,67	1.90	14 (31%)

In the following table, the Chirals column lists the number of chiral outliers, the number of chiral centers analysed, the number of these observed in the model and the number defined in the chemical component dictionary. Similar counts are reported in the Torsion and Rings columns. '-' means no outliers of that kind were identified.

Mol	Type	Chain	Res	Link	Chirals	Torsions	Rings
2	BLA	A	900	1	-	0/22/74/74	0/4/4/4
2	BLA	B	900	1	-	0/22/74/74	0/4/4/4

The worst 5 of 30 bond length outliers are listed below:

Mol	Chain	Res	Type	Atoms	Z	Observed(Å)	Ideal(Å)
2	B	900	BLA	C1D-C2D	-3.94	1.37	1.45
2	B	900	BLA	C3C-C4C	-3.72	1.39	1.45
2	B	900	BLA	C4D-C3D	-3.71	1.39	1.45
2	A	900	BLA	C3C-C4C	-3.37	1.40	1.45
2	B	900	BLA	C1B-C2B	-3.24	1.39	1.45

The worst 5 of 27 bond angle outliers are listed below:

Mol	Chain	Res	Type	Atoms	Z	Observed(°)	Ideal(°)
2	A	900	BLA	C4C-CHD-C1D	-4.08	117.75	128.03
2	B	900	BLA	CHD-C4C-C3C	-3.87	117.86	128.02
2	A	900	BLA	CHA-C4D-C3D	-3.77	116.88	125.48
2	A	900	BLA	CAD-CBD-CGD	-3.08	106.79	112.78
2	B	900	BLA	C3A-C4A-NA	-2.86	105.61	110.29

There are no chirality outliers.

There are no torsion outliers.

There are no ring outliers.

2 monomers are involved in 12 short contacts:

Mol	Chain	Res	Type	Clashes	Symm-Clashes
2	A	900	BLA	5	0
2	B	900	BLA	7	0

## 5.7 Other polymers [i](#)

There are no such residues in this entry.

## 5.8 Polymer linkage issues [i](#)

There are no chain breaks in this entry.

## 6 Fit of model and data [i](#)

### 6.1 Protein, DNA and RNA chains [i](#)

In the following table, the column labelled ‘#RSRZ> 2’ contains the number (and percentage) of RSRZ outliers, followed by percent RSRZ outliers for the chain as percentile scores relative to all X-ray entries and entries of similar resolution. The OWAB column contains the minimum, median, 95<sup>th</sup> percentile and maximum values of the occupancy-weighted average B-factor per residue. The column labelled ‘Q< 0.9’ lists the number of (and percentage) of residues with an average occupancy less than 0.9.

Mol	Chain	Analysed	<RSRZ>	#RSRZ>2	OWAB(Å <sup>2</sup> )	Q<0.9
1	A	473/519 (91%)	0.13	9 (1%) 70 64	93, 131, 185, 270	0
1	B	448/519 (86%)	0.43	32 (7%) 19 18	119, 172, 245, 344	0
All	All	921/1038 (88%)	0.28	41 (4%) 37 33	93, 149, 232, 344	0

The worst 5 of 41 RSRZ outliers are listed below:

Mol	Chain	Res	Type	RSRZ
1	B	226	PRO	6.0
1	B	236	VAL	4.7
1	B	103	PHE	4.6
1	B	237	THR	4.6
1	B	191	GLU	3.7

### 6.2 Non-standard residues in protein, DNA, RNA chains [i](#)

There are no non-standard protein/DNA/RNA residues in this entry.

### 6.3 Carbohydrates [i](#)

There are no carbohydrates in this entry.

### 6.4 Ligands [i](#)

In the following table, the Atoms column lists the number of modelled atoms in the group and the number defined in the chemical component dictionary. LLDF column lists the quality of electron density of the group with respect to its neighbouring residues in protein, DNA or RNA chains. The B-factors column lists the minimum, median, 95<sup>th</sup> percentile and maximum values of B factors of atoms in the group. The column labelled ‘Q< 0.9’ lists the number of atoms with occupancy less than 0.9.

Mol	Type	Chain	Res	Atoms	RSCC	RSR	LLDF	B-factors( $\text{\AA}^2$ )	Q<0.9
2	BLA	B	900	43/43	0.89	0.56	2.67	140,153,180,212	0
2	BLA	A	900	43/43	0.90	0.50	2.40	90,114,146,153	0

## 6.5 Other polymers [i](#)

There are no such residues in this entry.