



# Full wwPDB X-ray Structure Validation Report ⓘ

Feb 1, 2016 – 12:25 PM GMT

PDB ID : 3RA8  
Title : Structural studies of AAV8 capsid transitions associated with endosomal trafficking  
Authors : Nam, H.-J.; Gurda, B.; McKenna, R.; Porter, M.; Byrne, B.; Salganik, M.; Muzyczka, N.; Agbandje-McKenna, M.  
Deposited on : 2011-03-27  
Resolution : 2.70 Å(reported)

This is a Full wwPDB X-ray Structure Validation Report for a publicly released PDB entry.  
We welcome your comments at [validation@mail.wwpdb.org](mailto:validation@mail.wwpdb.org)  
A user guide is available at  
<http://wwpdb.org/validation/2016/XrayValidationReportHelp>  
with specific help available everywhere you see the ⓘ symbol.

---

The following versions of software and data (see [references ⓘ](#)) were used in the production of this report:

MolProbity : 4.02b-467  
Mogul : 1.7 (RC4), CSD as536be (2015)  
Xtriage (Phenix) : 1.9-1692  
EDS : rb-20026688  
Percentile statistics : 20151230.v01 (using entries in the PDB archive December 30th 2015)  
Refmac : 5.8.0135  
CCP4 : 6.5.0  
Ideal geometry (proteins) : Engh & Huber (2001)  
Ideal geometry (DNA, RNA) : Parkinson et al. (1996)  
Validation Pipeline (wwPDB-VP) : trunk26865

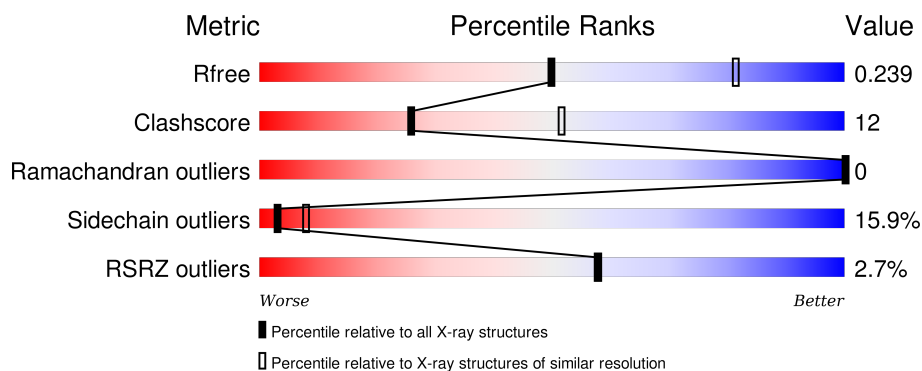
# 1 Overall quality at a glance

The following experimental techniques were used to determine the structure:

## *X-RAY DIFFRACTION*

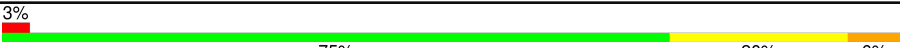
The reported resolution of this entry is 2.70 Å.

Percentile scores (ranging between 0-100) for global validation metrics of the entry are shown in the following graphic. The table shows the number of entries on which the scores are based.



Metric	Whole archive (#Entries)	Similar resolution (#Entries, resolution range(Å))
$R_{free}$	91344	2103 (2.70-2.70)
Clashscore	102246	2422 (2.70-2.70)
Ramachandran outliers	100387	2382 (2.70-2.70)
Sidechain outliers	100360	2382 (2.70-2.70)
RSRZ outliers	91569	2107 (2.70-2.70)

The table below summarises the geometric issues observed across the polymeric chains and their fit to the electron density. The red, orange, yellow and green segments on the lower bar indicate the fraction of residues that contain outliers for  $\geq 3$ , 2, 1 and 0 types of geometric quality criteria. A grey segment represents the fraction of residues that are not modelled. The numeric value for each fraction is indicated below the corresponding segment, with a dot representing fractions  $\leq 5\%$ . The upper red bar (where present) indicates the fraction of residues that have poor fit to the electron density. The numeric value is given above the bar.

Mol	Chain	Length	Quality of chain
1	A	519	

The following table lists non-polymeric compounds, carbohydrate monomers and non-standard residues in protein, DNA, RNA chains that are outliers for geometric or electron-density-fit criteria:

Mol	Type	Chain	Res	Chirality	Geometry	Clashes	Electron density
2	A	A	1	-	-	-	X

## 2 Entry composition [i](#)

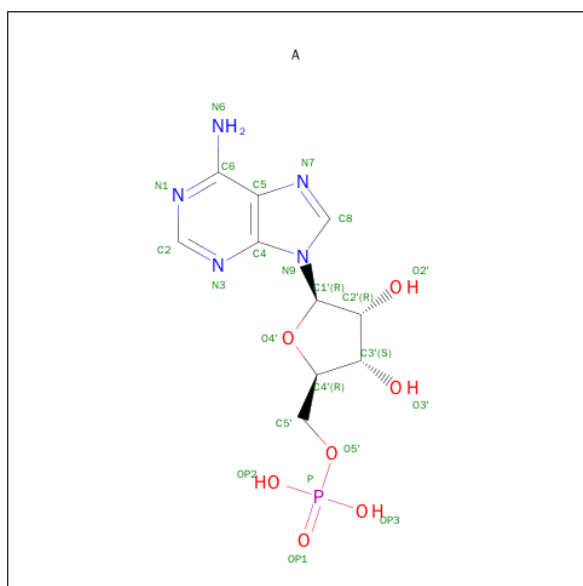
There are 3 unique types of molecules in this entry. The entry contains 4244 atoms, of which 0 are hydrogens and 0 are deuteriums.

In the tables below, the ZeroOcc column contains the number of atoms modelled with zero occupancy, the AltConf column contains the number of residues with at least one atom in alternate conformation and the Trace column contains the number of residues modelled with at most 2 atoms.

- Molecule 1 is a protein called Capsid protein.

Mol	Chain	Residues	Atoms					ZeroOcc	AltConf	Trace
1	A	519	Total	C	N	O	S	0	0	0
			4136	2609	716	798	13			

- Molecule 2 is ADENOSINE-5'-MONOPHOSPHATE (three-letter code: A) (formula:  $C_{10}H_{14}N_5O_7P$ ).



Mol	Chain	Residues	Atoms					ZeroOcc	AltConf
2	A	1	Total	C	N	O	P	0	0
			23	10	5	7	1		

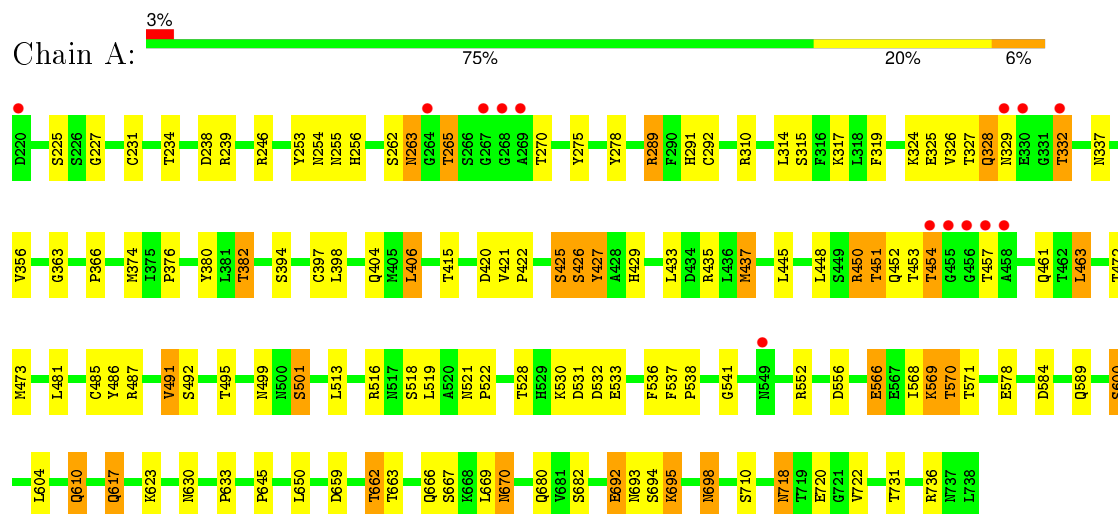
- Molecule 3 is water.

Mol	Chain	Residues	Atoms	ZeroOcc	AltConf
3	A	85	Total	0	0
			85		

### 3 Residue-property plots [i](#)

These plots are drawn for all protein, RNA and DNA chains in the entry. The first graphic for a chain summarises the proportions of errors displayed in the second graphic. The second graphic shows the sequence view annotated by issues in geometry and electron density. Residues are color-coded according to the number of geometric quality criteria for which they contain at least one outlier: green = 0, yellow = 1, orange = 2 and red = 3 or more. A red dot above a residue indicates a poor fit to the electron density ( $\text{RSRZ} > 2$ ). Stretches of 2 or more consecutive residues without any outlier are shown as a green connector. Residues present in the sample, but not in the model, are shown in grey.

- Molecule 1: Capsid protein



## 4 Data and refinement statistics

Property	Value	Source
Space group	P 63 2 2	Depositor
Cell constants a, b, c, $\alpha$ , $\beta$ , $\gamma$	257.94Å 257.94Å 448.69Å 90.00° 90.00° 120.00°	Depositor
Resolution (Å)	40.00 – 2.70 39.96 – 2.50	Depositor EDS
% Data completeness (in resolution range)	77.9 (40.00-2.70) 70.4 (39.96-2.50)	Depositor EDS
$R_{merge}$	(Not available)	Depositor
$R_{sym}$	(Not available)	Depositor
$\langle I/\sigma(I) \rangle$ <sup>1</sup>	1.60 (at 2.51Å)	Xtriage
Refinement program	CNS	Depositor
R, $R_{free}$	0.245 , 0.250 0.240 , 0.239	Depositor DCC
$R_{free}$ test set	9350 reflections (5.29%)	DCC
Wilson B-factor (Å <sup>2</sup> )	37.0	Xtriage
Anisotropy	0.544	Xtriage
Bulk solvent $k_{sol}$ (e/Å <sup>3</sup> ), $B_{sol}$ (Å <sup>2</sup> )	0.35 , 39.2	EDS
Estimated twinning fraction	No twinning to report.	Xtriage
L-test for twinning <sup>2</sup>	$\langle  L  \rangle = 0.47$ , $\langle L^2 \rangle = 0.30$	Xtriage
Outliers	4 of 211092 reflections (0.002%)	Xtriage
$F_o, F_c$ correlation	0.90	EDS
Total number of atoms	4244	wwPDB-VP
Average B, all atoms (Å <sup>2</sup> )	38.0	wwPDB-VP

Xtriage's analysis on translational NCS is as follows: *The largest off-origin peak in the Patterson function is 2.73% of the height of the origin peak. No significant pseudotranslation is detected.*

<sup>1</sup>Intensities estimated from amplitudes.

<sup>2</sup>Theoretical values of  $\langle |L| \rangle$ ,  $\langle L^2 \rangle$  for acentric reflections are 0.5, 0.375 respectively for untwinned datasets, and 0.333, 0.2 for perfectly twinned datasets.

## 5 Model quality [i](#)

### 5.1 Standard geometry [i](#)

The Z score for a bond length (or angle) is the number of standard deviations the observed value is removed from the expected value. A bond length (or angle) with  $|Z| > 5$  is considered an outlier worth inspection. RMSZ is the root-mean-square of all Z scores of the bond lengths (or angles).

Mol	Chain	Bond lengths		Bond angles	
		RMSZ	$\# Z  > 5$	RMSZ	$\# Z  > 5$
1	A	1.61	7/4259 (0.2%)	0.73	1/5811 (0.0%)

All (7) bond length outliers are listed below:

Mol	Chain	Res	Type	Atoms	Z	Observed(Å)	Ideal(Å)
1	A	397	CYS	CB-SG	-5.93	1.72	1.81
1	A	380	TYR	CD1-CE1	-5.37	1.31	1.39
1	A	380	TYR	CD2-CE2	-5.32	1.31	1.39
1	A	427	TYR	CD2-CE2	-5.25	1.31	1.39
1	A	292	CYS	CB-SG	-5.23	1.73	1.81
1	A	486	TYR	CD2-CE2	-5.05	1.31	1.39
1	A	278	TYR	CD2-CE2	-5.02	1.31	1.39

All (1) bond angle outliers are listed below:

Mol	Chain	Res	Type	Atoms	Z	Observed(°)	Ideal(°)
1	A	406	LEU	CA-CB-CG	5.04	126.90	115.30

There are no chirality outliers.

There are no planarity outliers.

### 5.2 Too-close contacts [i](#)

In the following table, the Non-H and H(model) columns list the number of non-hydrogen atoms and hydrogen atoms in the chain respectively. The H(added) column lists the number of hydrogen atoms added and optimized by MolProbity. The Clashes column lists the number of clashes within the asymmetric unit, whereas Symm-Clashes lists symmetry related clashes.

Mol	Chain	Non-H	H(model)	H(added)	Clashes	Symm-Clashes
1	A	4136	0	3893	100	0
2	A	23	0	12	0	0

*Continued on next page...*

*Continued from previous page...*

Mol	Chain	Non-H	H(model)	H(added)	Clashes	Symm-Clashes
3	A	85	0	0	1	0
All	All	4244	0	3905	100	0

The all-atom clashscore is defined as the number of clashes found per 1000 atoms (including hydrogen atoms). The all-atom clashscore for this structure is 12.

All (100) close contacts within the same asymmetric unit are listed below, sorted by their clash magnitude.

Atom-1	Atom-2	Interatomic distance (Å)	Clash overlap (Å)
1:A:289:ARG:HG2	1:A:289:ARG:HH11	1.06	1.11
1:A:435:ARG:CD	1:A:473:MET:CE	2.41	0.98
1:A:566:GLU:O	1:A:569:LYS:HG2	1.64	0.97
1:A:435:ARG:HD3	1:A:473:MET:CE	1.96	0.96
1:A:698:ASN:H	1:A:698:ASN:HD22	1.07	0.95
1:A:435:ARG:HD3	1:A:473:MET:HE3	1.47	0.94
1:A:426:SER:HB3	1:A:731:THR:HG23	1.47	0.94
1:A:289:ARG:CG	1:A:289:ARG:HH11	1.80	0.94
1:A:426:SER:HB3	1:A:731:THR:CG2	1.99	0.93
1:A:435:ARG:CD	1:A:473:MET:HE3	2.03	0.89
1:A:289:ARG:HG2	1:A:289:ARG:NH1	1.70	0.88
1:A:426:SER:HA	1:A:731:THR:HG22	1.57	0.87
1:A:718:ASN:HB3	1:A:720:GLU:H	1.43	0.84
1:A:426:SER:HA	1:A:731:THR:CG2	2.08	0.83
1:A:382:THR:HG21	1:A:394:SER:H	1.49	0.76
1:A:670:ASN:HD22	1:A:670:ASN:H	1.35	0.75
1:A:429:HIS:HB2	1:A:570:THR:HG21	1.69	0.74
1:A:718:ASN:HB2	1:A:722:VAL:H	1.52	0.74
1:A:454:THR:O	1:A:454:THR:HG23	1.87	0.73
1:A:566:GLU:O	1:A:569:LYS:CG	2.36	0.73
1:A:426:SER:CB	1:A:731:THR:CG2	2.68	0.72
1:A:255:ASN:O	1:A:256:HIS:HB2	1.88	0.71
1:A:435:ARG:HD2	1:A:473:MET:CE	2.19	0.71
1:A:698:ASN:ND2	1:A:698:ASN:H	1.81	0.69
1:A:450:ARG:HG3	1:A:450:ARG:NH1	2.07	0.68
1:A:254:ASN:O	1:A:255:ASN:HB2	1.92	0.68
1:A:265:THR:O	1:A:265:THR:HG23	1.93	0.68
1:A:227:GLY:HA3	1:A:319:PHE:CD1	2.29	0.68
1:A:398:LEU:HD23	1:A:398:LEU:N	2.09	0.67
1:A:421:VAL:HG22	1:A:422:PRO:HD2	1.78	0.66
1:A:246:ARG:HH11	1:A:246:ARG:HG2	1.61	0.66
1:A:450:ARG:HH11	1:A:450:ARG:CG	2.10	0.64

*Continued on next page...*

*Continued from previous page...*

Atom-1	Atom-2	Interatomic distance (Å)	Clash overlap (Å)
1:A:426:SER:CA	1:A:731:THR:CG2	2.75	0.64
1:A:731:THR:O	1:A:731:THR:CG2	2.47	0.63
1:A:310:ARG:NH1	1:A:421:VAL:O	2.30	0.62
1:A:435:ARG:HD3	1:A:473:MET:HE1	1.81	0.60
1:A:531:ASP:O	1:A:532:ASP:HB2	2.03	0.59
1:A:662:THR:O	1:A:662:THR:CG2	2.51	0.58
1:A:670:ASN:ND2	1:A:670:ASN:H	2.00	0.58
1:A:450:ARG:HD3	1:A:452:GLN:O	2.04	0.58
1:A:450:ARG:NH1	1:A:450:ARG:CG	2.67	0.57
1:A:610:GLN:CA	1:A:610:GLN:HE21	2.17	0.57
1:A:450:ARG:HH11	1:A:450:ARG:HG3	1.66	0.57
1:A:426:SER:CB	1:A:731:THR:HG23	2.29	0.57
1:A:718:ASN:HB3	1:A:720:GLU:N	2.16	0.56
1:A:329:ASN:O	1:A:332:THR:HG23	2.05	0.56
1:A:530:LYS:NZ	1:A:533:GLU:OE1	2.35	0.55
1:A:435:ARG:CD	1:A:473:MET:HE1	2.31	0.55
1:A:623:LYS:HB2	1:A:645:PRO:HG3	1.89	0.55
1:A:491:VAL:HG22	1:A:537:PHE:CE2	2.43	0.54
1:A:363:GLY:HA3	1:A:376:PRO:HG3	1.89	0.54
1:A:457:THR:HG22	1:A:457:THR:O	2.06	0.54
1:A:289:ARG:NH1	1:A:617:GLN:O	2.41	0.53
1:A:692:GLU:HG2	1:A:693:ASN:N	2.24	0.52
1:A:670:ASN:ND2	1:A:670:ASN:N	2.58	0.52
1:A:425:SER:HB3	1:A:427:TYR:CE2	2.45	0.52
1:A:698:ASN:HD22	1:A:698:ASN:N	1.89	0.51
1:A:731:THR:O	1:A:731:THR:HG22	2.10	0.51
1:A:246:ARG:NH1	1:A:246:ARG:HG2	2.24	0.51
1:A:253:TYR:O	1:A:254:ASN:HB2	2.10	0.50
1:A:356:VAL:HG13	1:A:356:VAL:O	2.12	0.50
1:A:451:THR:O	1:A:451:THR:CG2	2.58	0.49
1:A:426:SER:CA	1:A:731:THR:HG22	2.36	0.49
1:A:610:GLN:NE2	1:A:610:GLN:HA	2.28	0.49
1:A:610:GLN:NE2	1:A:610:GLN:CA	2.76	0.48
1:A:499:ASN:ND2	1:A:501:SER:OG	2.44	0.48
1:A:662:THR:O	1:A:662:THR:HG23	2.14	0.48
1:A:566:GLU:HG2	1:A:566:GLU:O	2.13	0.48
1:A:421:VAL:HG22	1:A:422:PRO:CD	2.42	0.47
1:A:356:VAL:O	1:A:356:VAL:CG1	2.61	0.47
1:A:317:LYS:HG2	1:A:319:PHE:CD2	2.50	0.47
1:A:319:PHE:CD2	1:A:319:PHE:N	2.82	0.47
1:A:324:LYS:HE2	1:A:337:ASN:OD1	2.15	0.46

*Continued on next page...*



*Continued from previous page...*

Atom-1	Atom-2	Interatomic distance (Å)	Clash overlap (Å)
1:A:485:CYS:O	1:A:600:SER:HA	2.15	0.46
1:A:570:THR:HG23	1:A:571:THR:HG23	1.98	0.46
1:A:263:ASN:HB2	1:A:275:TYR:CE2	2.51	0.46
1:A:695:LYS:HA	1:A:695:LYS:HD2	1.63	0.45
1:A:328:GLN:HE21	1:A:328:GLN:HB2	1.60	0.45
1:A:568:ILE:C	1:A:570:THR:H	2.20	0.44
1:A:451:THR:O	1:A:451:THR:HG23	2.17	0.44
1:A:521:ASN:HA	1:A:522:PRO:HA	1.82	0.44
1:A:246:ARG:HD2	1:A:366:PRO:HD2	2.00	0.43
1:A:435:ARG:NE	1:A:473:MET:HE3	2.33	0.43
1:A:435:ARG:HA	1:A:437:MET:CE	2.49	0.43
1:A:492:SER:HB2	1:A:536:PHE:CE2	2.53	0.43
1:A:568:ILE:C	1:A:570:THR:N	2.68	0.43
1:A:426:SER:HA	1:A:731:THR:HG21	1.98	0.43
1:A:630:ASN:OD1	1:A:633:PRO:HG3	2.18	0.43
1:A:659:ASP:OD2	1:A:659:ASP:N	2.50	0.43
1:A:530:LYS:NZ	1:A:533:GLU:CD	2.73	0.42
1:A:528:THR:HG23	1:A:538:PRO:HD3	2.01	0.42
1:A:538:PRO:HB2	1:A:541:GLY:HA3	2.01	0.42
1:A:314:LEU:C	1:A:314:LEU:HD12	2.40	0.42
1:A:435:ARG:HD2	1:A:473:MET:HE2	2.01	0.42
1:A:659:ASP:HB2	3:A:739:HOH:O	2.19	0.42
1:A:718:ASN:HA	1:A:718:ASN:HD22	1.55	0.42
1:A:568:ILE:HD13	1:A:568:ILE:HG21	1.82	0.41
1:A:533:GLU:HB3	1:A:536:PHE:HD1	1.85	0.41
1:A:452:GLN:HG3	1:A:453:THR:N	2.36	0.40
1:A:463:LEU:HA	1:A:463:LEU:HD12	1.90	0.40

There are no symmetry-related clashes.

## 5.3 Torsion angles [i](#)

### 5.3.1 Protein backbone [i](#)

In the following table, the Percentiles column shows the percent Ramachandran outliers of the chain as a percentile score with respect to all X-ray entries followed by that with respect to entries of similar resolution.

The Analysed column shows the number of residues for which the backbone conformation was analysed, and the total number of residues.

Mol	Chain	Analysed	Favoured	Allowed	Outliers	Percentiles	
1	A	517/519 (100%)	511 (99%)	6 (1%)	0	100	100

There are no Ramachandran outliers to report.

### 5.3.2 Protein sidechains ⓘ

In the following table, the Percentiles column shows the percent sidechain outliers of the chain as a percentile score with respect to all X-ray entries followed by that with respect to entries of similar resolution.

The Analysed column shows the number of residues for which the sidechain conformation was analysed, and the total number of residues.

Mol	Chain	Analysed	Rotameric	Outliers	Percentiles	
1	A	453/453 (100%)	381 (84%)	72 (16%)	3	8

All (72) residues with a non-rotameric sidechain are listed below:

Mol	Chain	Res	Type
1	A	225	SER
1	A	231	CYS
1	A	234	THR
1	A	238	ASP
1	A	239	ARG
1	A	262	SER
1	A	263	ASN
1	A	265	THR
1	A	270	THR
1	A	289	ARG
1	A	291	HIS
1	A	315	SER
1	A	325	GLU
1	A	326	VAL
1	A	327	THR
1	A	328	GLN
1	A	332	THR
1	A	374	MET
1	A	382	THR
1	A	404	GLN
1	A	406	LEU
1	A	415	THR
1	A	420	ASP

*Continued on next page...*

*Continued from previous page...*

Mol	Chain	Res	Type
1	A	425	SER
1	A	426	SER
1	A	433	LEU
1	A	437	MET
1	A	445	LEU
1	A	448	LEU
1	A	450	ARG
1	A	451	THR
1	A	454	THR
1	A	461	GLN
1	A	463	LEU
1	A	472	THR
1	A	481	LEU
1	A	487	ARG
1	A	491	VAL
1	A	495	THR
1	A	501	SER
1	A	513	LEU
1	A	516	ARG
1	A	518	SER
1	A	519	LEU
1	A	552	ARG
1	A	556	ASP
1	A	566	GLU
1	A	569	LYS
1	A	570	THR
1	A	578	GLU
1	A	584	ASP
1	A	589	GLN
1	A	600	SER
1	A	604	LEU
1	A	610	GLN
1	A	617	GLN
1	A	650	LEU
1	A	662	THR
1	A	663	THR
1	A	666	GLN
1	A	667	SER
1	A	669	LEU
1	A	670	ASN
1	A	680	GLN
1	A	682	SER

*Continued on next page...*

*Continued from previous page...*

Mol	Chain	Res	Type
1	A	692	GLU
1	A	694	SER
1	A	695	LYS
1	A	698	ASN
1	A	710	SER
1	A	718	ASN
1	A	736	ARG

Some sidechains can be flipped to improve hydrogen bonding and reduce clashes. All (14) such sidechains are listed below:

Mol	Chain	Res	Type
1	A	263	ASN
1	A	291	HIS
1	A	328	GLN
1	A	467	GLN
1	A	499	ASN
1	A	529	HIS
1	A	549	ASN
1	A	601	GLN
1	A	610	GLN
1	A	653	ASN
1	A	670	ASN
1	A	698	ASN
1	A	718	ASN
1	A	737	ASN

### 5.3.3 RNA ⓘ

There are no RNA molecules in this entry.

## 5.4 Non-standard residues in protein, DNA, RNA chains ⓘ

There are no non-standard protein/DNA/RNA residues in this entry.

## 5.5 Carbohydrates ⓘ

There are no carbohydrates in this entry.

## 5.6 Ligand geometry

1 ligand is modelled in this entry.

In the following table, the Counts columns list the number of bonds (or angles) for which Mogul statistics could be retrieved, the number of bonds (or angles) that are observed in the model and the number of bonds (or angles) that are defined in the chemical component dictionary. The Link column lists molecule types, if any, to which the group is linked. The Z score for a bond length (or angle) is the number of standard deviations the observed value is removed from the expected value. A bond length (or angle) with  $|Z| > 2$  is considered an outlier worth inspection. RMSZ is the root-mean-square of all Z scores of the bond lengths (or angles).

Mol	Type	Chain	Res	Link	Bond lengths			Bond angles		
					Counts	RMSZ	$\# Z  > 2$	Counts	RMSZ	$\# Z  > 2$
2	A	A	1	-	20,25,25	0.65	0	22,38,38	0.70	0

In the following table, the Chirals column lists the number of chiral outliers, the number of chiral centers analysed, the number of these observed in the model and the number defined in the chemical component dictionary. Similar counts are reported in the Torsion and Rings columns. '-' means no outliers of that kind were identified.

Mol	Type	Chain	Res	Link	Chirals	Torsions	Rings
2	A	A	1	-	-	0/6/26/26	0/3/3/3

There are no bond length outliers.

There are no bond angle outliers.

There are no chirality outliers.

There are no torsion outliers.

There are no ring outliers.

No monomer is involved in short contacts.

## 5.7 Other polymers

There are no such residues in this entry.

## 5.8 Polymer linkage issues

There are no chain breaks in this entry.

## 6 Fit of model and data [i](#)

### 6.1 Protein, DNA and RNA chains [i](#)

In the following table, the column labelled ‘#RSRZ> 2’ contains the number (and percentage) of RSRZ outliers, followed by percent RSRZ outliers for the chain as percentile scores relative to all X-ray entries and entries of similar resolution. The OWAB column contains the minimum, median, 95<sup>th</sup> percentile and maximum values of the occupancy-weighted average B-factor per residue. The column labelled ‘Q< 0.9’ lists the number of (and percentage) of residues with an average occupancy less than 0.9.

Mol	Chain	Analysed	<RSRZ>	#RSRZ>2	OWAB(Å <sup>2</sup> )	Q<0.9
1	A	519/519 (100%)	-0.25	14 (2%) 58 58	27, 35, 55, 91	0

All (14) RSRZ outliers are listed below:

Mol	Chain	Res	Type	RSRZ
1	A	457	THR	4.3
1	A	220	ASP	4.2
1	A	330	GLU	3.4
1	A	456	GLY	3.4
1	A	267	GLY	3.4
1	A	454	THR	2.7
1	A	455	GLY	2.7
1	A	269	ALA	2.6
1	A	549	ASN	2.6
1	A	329	ASN	2.5
1	A	458	ALA	2.3
1	A	332	THR	2.2
1	A	264	GLY	2.2
1	A	268	GLY	2.1

### 6.2 Non-standard residues in protein, DNA, RNA chains [i](#)

There are no non-standard protein/DNA/RNA residues in this entry.

### 6.3 Carbohydrates [i](#)

There are no carbohydrates in this entry.

## 6.4 Ligands [i](#)

In the following table, the Atoms column lists the number of modelled atoms in the group and the number defined in the chemical component dictionary. LLDF column lists the quality of electron density of the group with respect to its neighbouring residues in protein, DNA or RNA chains. The B-factors column lists the minimum, median, 95<sup>th</sup> percentile and maximum values of B factors of atoms in the group. The column labelled 'Q< 0.9' lists the number of atoms with occupancy less than 0.9.

Mol	Type	Chain	Res	Atoms	RSCC	RSR	LLDF	B-factors( $\text{\AA}^2$ )	Q<0.9
2	A	A	1	23/23	0.65	0.33	4.70	48,66,102,103	18

## 6.5 Other polymers [i](#)

There are no such residues in this entry.