



# Full wwPDB X-ray Structure Validation Report ⓘ

Feb 1, 2016 – 08:15 PM GMT

PDB ID : 4RAN  
Title : Aza-acyclic nucleoside phosphonates containing a second phosphonate group as inhibitors of the human, Plasmodium falciparum and vivax 6-oxopurine phosphoribosyltransferases and their pro-drugs as antimalarial agents  
Authors : Keough, D.T.; Hockova, D.; Janeba, Z.; Wang, T.-H.; Naesens, L.; Edstein, M.D.; Chavchich, M.; Guddat, L.W.  
Deposited on : 2014-09-10  
Resolution : 2.55 Å(reported)

This is a Full wwPDB X-ray Structure Validation Report for a publicly released PDB entry.  
We welcome your comments at [validation@mail.wwpdb.org](mailto:validation@mail.wwpdb.org)  
A user guide is available at  
<http://wwpdb.org/validation/2016/XrayValidationReportHelp>  
with specific help available everywhere you see the ⓘ symbol.

---

The following versions of software and data (see [references ⓘ](#)) were used in the production of this report:

MolProbity : 4.02b-467  
Mogul : 1.7 (RC4), CSD as536be (2015)  
Xtriage (Phenix) : 1.9-1692  
EDS : rb-20026688  
Percentile statistics : 20151230.v01 (using entries in the PDB archive December 30th 2015)  
Refmac : 5.8.0135  
CCP4 : 6.5.0  
Ideal geometry (proteins) : Engh & Huber (2001)  
Ideal geometry (DNA, RNA) : Parkinson et al. (1996)  
Validation Pipeline (wwPDB-VP) : trunk26865

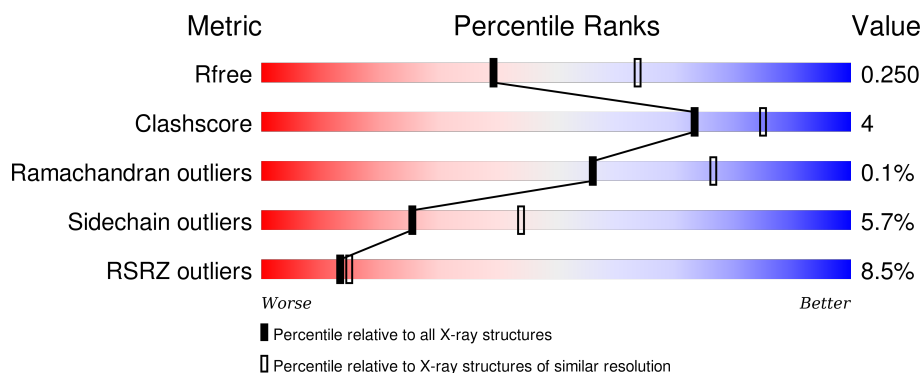
# 1 Overall quality at a glance

The following experimental techniques were used to determine the structure:

## *X-RAY DIFFRACTION*

The reported resolution of this entry is 2.55 Å.

Percentile scores (ranging between 0-100) for global validation metrics of the entry are shown in the following graphic. The table shows the number of entries on which the scores are based.



Metric	Whole archive (#Entries)	Similar resolution (#Entries, resolution range(Å))
$R_{free}$	91344	4549 (2.58-2.50)
Clashscore	102246	5292 (2.58-2.50)
Ramachandran outliers	100387	5194 (2.58-2.50)
Sidechain outliers	100360	5196 (2.58-2.50)
RSRZ outliers	91569	4561 (2.58-2.50)

The table below summarises the geometric issues observed across the polymeric chains and their fit to the electron density. The red, orange, yellow and green segments on the lower bar indicate the fraction of residues that contain outliers for  $\geq 3$ , 2, 1 and 0 types of geometric quality criteria. A grey segment represents the fraction of residues that are not modelled. The numeric value for each fraction is indicated below the corresponding segment, with a dot representing fractions  $\leq 5\%$ . The upper red bar (where present) indicates the fraction of residues that have poor fit to the electron density. The numeric value is given above the bar.

Mol	Chain	Length	Quality of chain
1	A	217	<div> <div>6%</div> <div>79% 12% • 7%</div> </div>
1	B	217	<div> <div>7%</div> <div>77% 14% • 8%</div> </div>
1	C	217	<div> <div>6%</div> <div>79% 14% 7%</div> </div>
1	D	217	<div> <div>12%</div> <div>78% 12% 10%</div> </div>

## 2 Entry composition [i](#)

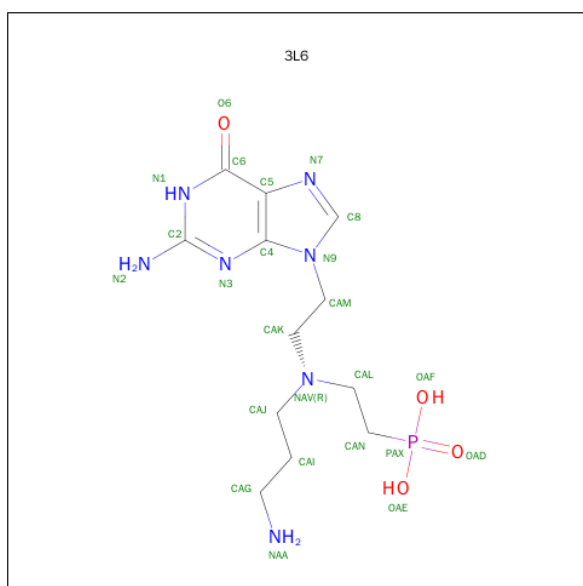
There are 4 unique types of molecules in this entry. The entry contains 6435 atoms, of which 0 are hydrogens and 0 are deuteriums.

In the tables below, the ZeroOcc column contains the number of atoms modelled with zero occupancy, the AltConf column contains the number of residues with at least one atom in alternate conformation and the Trace column contains the number of residues modelled with at most 2 atoms.

- Molecule 1 is a protein called Hypoxanthine-guanine phosphoribosyltransferase.

Mol	Chain	Residues	Atoms					ZeroOcc	AltConf	Trace
1	A	201	Total	C	N	O	S	0	1	0
			1601	1027	272	295	7			
1	B	200	Total	C	N	O	S	0	1	0
			1580	1014	263	296	7			
1	C	202	Total	C	N	O	S	0	0	0
			1577	1012	262	296	7			
1	D	196	Total	C	N	O	S	0	0	0
			1553	1000	262	284	7			

- Molecule 2 is (2-{[2-(2-AMINO-6-OXO-1,6-DIHYDRO-9H-PURIN-9-YL)ETHYL](3-AMINOPROPYL)AMINO}ETHYL)PHOSPHONIC ACID (three-letter code: 3L6) (formula: C<sub>12</sub>H<sub>22</sub>N<sub>7</sub>O<sub>4</sub>P).



Mol	Chain	Residues	Atoms					ZeroOcc	AltConf
2	A	1	Total	C	N	O	P	0	0
			24	12	7	4	1		

*Continued on next page...*

*Continued from previous page...*

Mol	Chain	Residues	Atoms					ZeroOcc	AltConf
2	B	1	Total	C	N	O	P	0	0
			24	12	7	4	1		
2	C	1	Total	C	N	O	P	0	0
			24	12	7	4	1		
2	D	1	Total	C	N	O	P	0	0
			24	12	7	4	1		

- Molecule 3 is MAGNESIUM ION (three-letter code: MG) (formula: Mg).

Mol	Chain	Residues	Atoms		ZeroOcc	AltConf
3	B	1	Total	Mg	0	0
			1	1		
3	A	1	Total	Mg	0	0
			1	1		
3	D	1	Total	Mg	0	0
			1	1		
3	C	1	Total	Mg	0	0
			1	1		

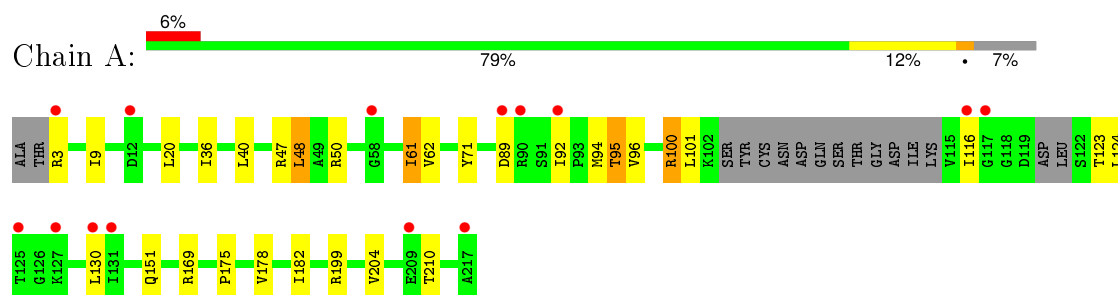
- Molecule 4 is water.

Mol	Chain	Residues	Atoms		ZeroOcc	AltConf
4	A	12	Total	O	0	0
			12	12		
4	B	6	Total	O	0	0
			6	6		
4	C	5	Total	O	0	0
			5	5		
4	D	1	Total	O	0	0
			1	1		

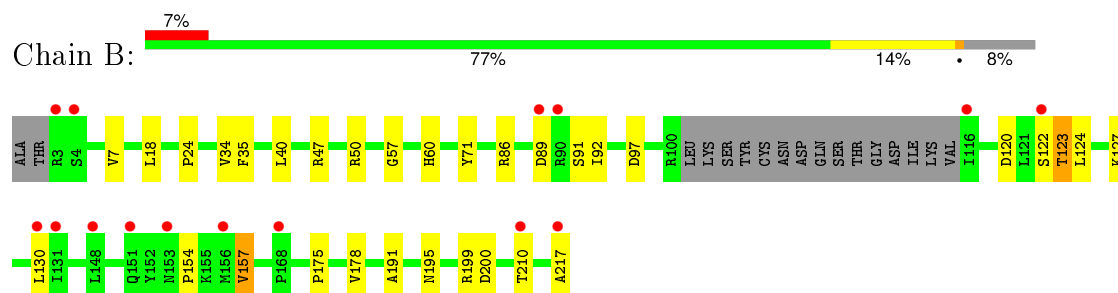
### 3 Residue-property plots

These plots are drawn for all protein, RNA and DNA chains in the entry. The first graphic for a chain summarises the proportions of errors displayed in the second graphic. The second graphic shows the sequence view annotated by issues in geometry and electron density. Residues are color-coded according to the number of geometric quality criteria for which they contain at least one outlier: green = 0, yellow = 1, orange = 2 and red = 3 or more. A red dot above a residue indicates a poor fit to the electron density ( $RSRZ > 2$ ). Stretches of 2 or more consecutive residues without any outlier are shown as a green connector. Residues present in the sample, but not in the model, are shown in grey.

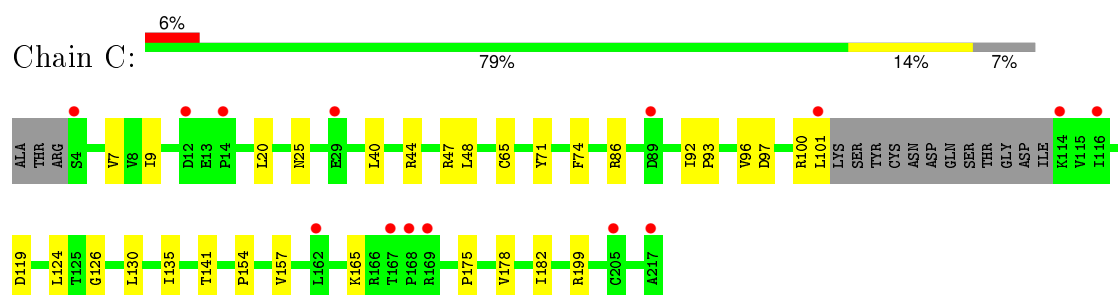
- Molecule 1: Hypoxanthine-guanine phosphoribosyltransferase



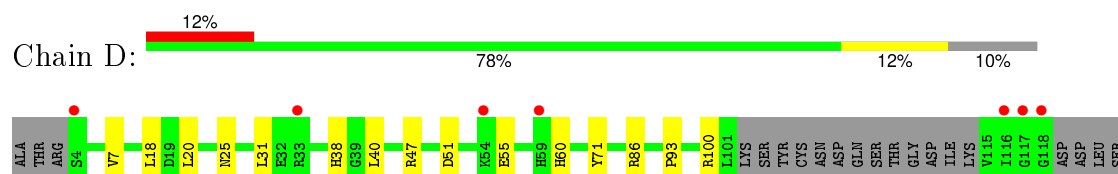
- Molecule 1: Hypoxanthine-guanine phosphoribosyltransferase

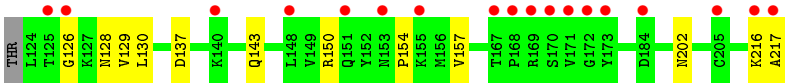


- Molecule 1: Hypoxanthine-guanine phosphoribosyltransferase



- Molecule 1: Hypoxanthine-guanine phosphoribosyltransferase





## 4 Data and refinement statistics

Property	Value	Source
Space group	P 21 21 21	Depositor
Cell constants a, b, c, $\alpha$ , $\beta$ , $\gamma$	66.09Å 95.37Å 139.74Å 90.00° 90.00° 90.00°	Depositor
Resolution (Å)	20.00 – 2.55 20.01 – 2.55	Depositor EDS
% Data completeness (in resolution range)	97.0 (20.00-2.55) 96.4 (20.01-2.55)	Depositor EDS
$R_{merge}$	(Not available)	Depositor
$R_{sym}$	(Not available)	Depositor
$\langle I/\sigma(I) \rangle$ <sup>1</sup>	3.02 (at 2.56Å)	Xtriage
Refinement program	PHENIX (phenix.refine: 1.8.2_1309)	Depositor
R, $R_{free}$	0.198 , 0.246 0.207 , 0.250	Depositor DCC
$R_{free}$ test set	2000 reflections (7.55%)	DCC
Wilson B-factor (Å <sup>2</sup> )	51.1	Xtriage
Anisotropy	0.626	Xtriage
Bulk solvent $k_{sol}$ (e/Å <sup>3</sup> ), $B_{sol}$ (Å <sup>2</sup> )	0.32 , 51.0	EDS
Estimated twinning fraction	No twinning to report.	Xtriage
L-test for twinning <sup>2</sup>	$\langle  L  \rangle = 0.48$ , $\langle L^2 \rangle = 0.31$	Xtriage
Outliers	0 of 29331 reflections	Xtriage
$F_o, F_c$ correlation	0.95	EDS
Total number of atoms	6435	wwPDB-VP
Average B, all atoms (Å <sup>2</sup> )	75.0	wwPDB-VP

Xtriage's analysis on translational NCS is as follows: *The largest off-origin peak in the Patterson function is 4.13% of the height of the origin peak. No significant pseudotranslation is detected.*

<sup>1</sup>Intensities estimated from amplitudes.

<sup>2</sup>Theoretical values of  $\langle |L| \rangle$ ,  $\langle L^2 \rangle$  for acentric reflections are 0.5, 0.375 respectively for untwinned datasets, and 0.333, 0.2 for perfectly twinned datasets.

## 5 Model quality [i](#)

### 5.1 Standard geometry [i](#)

Bond lengths and bond angles in the following residue types are not validated in this section: 3L6, MG

The Z score for a bond length (or angle) is the number of standard deviations the observed value is removed from the expected value. A bond length (or angle) with  $|Z| > 5$  is considered an outlier worth inspection. RMSZ is the root-mean-square of all Z scores of the bond lengths (or angles).

Mol	Chain	Bond lengths		Bond angles	
		RMSZ	$\# Z  > 5$	RMSZ	$\# Z  > 5$
1	A	0.23	0/1631	0.43	0/2201
1	B	0.23	0/1610	0.42	0/2176
1	C	0.23	0/1608	0.42	0/2178
1	D	0.22	0/1583	0.41	0/2136
All	All	0.23	0/6432	0.42	0/8691

There are no bond length outliers.

There are no bond angle outliers.

There are no chirality outliers.

There are no planarity outliers.

### 5.2 Too-close contacts [i](#)

In the following table, the Non-H and H(model) columns list the number of non-hydrogen atoms and hydrogen atoms in the chain respectively. The H(added) column lists the number of hydrogen atoms added and optimized by MolProbity. The Clashes column lists the number of clashes within the asymmetric unit, whereas Symm-Clashes lists symmetry related clashes.

Mol	Chain	Non-H	H(model)	H(added)	Clashes	Symm-Clashes
1	A	1601	0	1610	16	0
1	B	1580	0	1577	14	0
1	C	1577	0	1555	16	0
1	D	1553	0	1565	15	0
2	A	24	0	18	1	0
2	B	24	0	18	1	0
2	C	24	0	18	2	0
2	D	24	0	18	2	0
3	A	1	0	0	0	0

*Continued on next page...*



*Continued from previous page...*

Mol	Chain	Non-H	H(model)	H(added)	Clashes	Symm-Clashes
3	B	1	0	0	0	0
3	C	1	0	0	0	0
3	D	1	0	0	0	0
4	A	12	0	0	1	0
4	B	6	0	0	0	0
4	C	5	0	0	0	0
4	D	1	0	0	0	0
All	All	6435	0	6379	53	0

The all-atom clashscore is defined as the number of clashes found per 1000 atoms (including hydrogen atoms). The all-atom clashscore for this structure is 4.

All (53) close contacts within the same asymmetric unit are listed below, sorted by their clash magnitude.

Atom-1	Atom-2	Interatomic distance (Å)	Clash overlap (Å)
1:A:169:ARG:NH1	4:A:412:HOH:O	2.26	0.68
1:A:89:ASP:O	1:C:25:ASN:ND2	2.27	0.68
1:D:47:ARG:NH1	1:D:51:ASP:OD1	2.27	0.67
1:C:20:LEU:HD13	1:D:7:VAL:HG22	1.81	0.62
1:B:86:ARG:NH1	1:D:202:ASN:OD1	2.34	0.60
1:B:195[B]:ASN:ND2	1:B:217:ALA:OXT	2.34	0.60
1:A:61:ILE:HD11	1:A:94:MET:HE3	1.88	0.56
1:C:9:ILE:HD12	1:C:182:ILE:HG22	1.87	0.56
1:D:126:GLY:H	1:D:154:PRO:HA	1.69	0.56
1:C:175:PRO:HG2	1:C:178:VAL:HG22	1.90	0.53
1:D:18:LEU:HD21	1:D:31:LEU:HB2	1.90	0.53
1:A:9:ILE:HD12	1:A:182:ILE:HG22	1.92	0.52
1:A:100:ARG:NH2	1:C:119:ASP:OD1	2.30	0.52
1:B:50:ARG:NH1	1:C:86:ARG:O	2.42	0.52
1:A:100:ARG:HG2	1:A:116:ILE:HD12	1.92	0.51
1:B:120:ASP:O	1:B:123:THR:OG1	2.30	0.50
1:C:126:GLY:H	1:C:154:PRO:HA	1.77	0.49
1:C:7:VAL:HG22	1:D:20:LEU:HD13	1.95	0.49
1:A:96:VAL:HG22	1:C:199:ARG:HD2	1.96	0.48
1:B:18:LEU:HD23	1:B:34:VAL:HG23	1.96	0.48
2:B:301:3L6:H13	2:B:301:3L6:H18	1.62	0.48
1:D:129:VAL:HB	1:D:157:VAL:HG22	1.96	0.48
1:A:175:PRO:HG2	1:A:178:VAL:HG22	1.94	0.47
1:B:89:ASP:HA	1:D:25:ASN:HD21	1.80	0.47
1:D:216:LYS:NZ	1:D:217:ALA:O	2.46	0.47
1:B:57:GLY:HA2	1:B:92:ILE:HG12	1.95	0.47

*Continued on next page...*

*Continued from previous page...*

Atom-1	Atom-2	Interatomic distance (Å)	Clash overlap (Å)
1:A:199:ARG:HD2	1:C:96:VAL:HG22	1.95	0.47
1:A:61:ILE:HG23	1:A:92:ILE:HG21	1.97	0.46
1:A:62:VAL:HG13	1:A:95:THR:HG22	1.96	0.46
1:C:92:ILE:HD12	1:C:93:PRO:HD2	1.98	0.46
1:B:191:ALA:O	1:B:199:ARG:NH1	2.42	0.45
1:B:91:SER:HB3	1:D:25:ASN:HB2	1.98	0.45
1:D:38:HIS:CG	1:D:202:ASN:HD22	2.35	0.44
1:B:60:HIS:HD2	1:B:127:LYS:HD2	1.82	0.44
1:D:137:ASP:HB3	2:D:301:3L6:OAE	2.18	0.44
1:D:60:HIS:O	1:D:128:ASN:HB2	2.19	0.43
1:B:200:ASP:OD1	1:B:200:ASP:N	2.48	0.43
1:C:100:ARG:HA	1:C:101:LEU:HA	1.58	0.43
2:D:301:3L6:H7	2:D:301:3L6:H17	1.62	0.43
2:A:301:3L6:H13	2:A:301:3L6:H18	1.64	0.43
1:A:100:ARG:HG3	1:A:101:LEU:N	2.35	0.42
2:C:301:3L6:H18	2:C:301:3L6:H13	1.71	0.42
1:A:36:ILE:HB	1:A:204:VAL:HB	2.02	0.42
1:C:65:CYS:HB2	1:C:74:PHE:CD1	2.55	0.42
1:D:60:HIS:HD2	1:D:93:PRO:HG2	1.85	0.41
1:C:141:THR:OG1	2:C:301:3L6:OAF	2.26	0.41
1:A:20:LEU:HD13	1:B:7:VAL:HG22	2.03	0.41
1:B:154:PRO:HG2	1:B:157:VAL:HG22	2.02	0.41
1:C:135:ILE:HD11	1:C:165:LYS:HE3	2.02	0.40
1:A:48:LEU:HA	1:A:48:LEU:HD12	1.83	0.40
1:C:7:VAL:HG23	1:C:44:ARG:HD3	2.04	0.40
1:B:175:PRO:HG2	1:B:178:VAL:HG22	2.02	0.40
1:A:50:ARG:NH1	1:D:86:ARG:O	2.54	0.40

There are no symmetry-related clashes.

## 5.3 Torsion angles [i](#)

### 5.3.1 Protein backbone [i](#)

In the following table, the Percentiles column shows the percent Ramachandran outliers of the chain as a percentile score with respect to all X-ray entries followed by that with respect to entries of similar resolution.

The Analysed column shows the number of residues for which the backbone conformation was analysed, and the total number of residues.

Mol	Chain	Analysed	Favoured	Allowed	Outliers	Percentiles	
1	A	196/217 (90%)	190 (97%)	6 (3%)	0	100	100
1	B	197/217 (91%)	190 (96%)	6 (3%)	1 (0%)	34	54
1	C	198/217 (91%)	191 (96%)	7 (4%)	0	100	100
1	D	190/217 (88%)	182 (96%)	8 (4%)	0	100	100
All	All	781/868 (90%)	753 (96%)	27 (4%)	1 (0%)	56	76

All (1) Ramachandran outliers are listed below:

Mol	Chain	Res	Type
1	B	24	PRO

### 5.3.2 Protein sidechains ⓘ

In the following table, the Percentiles column shows the percent sidechain outliers of the chain as a percentile score with respect to all X-ray entries followed by that with respect to entries of similar resolution.

The Analysed column shows the number of residues for which the sidechain conformation was analysed, and the total number of residues.

Mol	Chain	Analysed	Rotameric	Outliers	Percentiles	
1	A	175/191 (92%)	162 (93%)	13 (7%)	17	30
1	B	172/191 (90%)	161 (94%)	11 (6%)	22	38
1	C	170/191 (89%)	162 (95%)	8 (5%)	32	54
1	D	169/191 (88%)	162 (96%)	7 (4%)	37	61
All	All	686/764 (90%)	647 (94%)	39 (6%)	25	44

All (39) residues with a non-rotameric sidechain are listed below:

Mol	Chain	Res	Type
1	A	3	ARG
1	A	40	LEU
1	A	47	ARG
1	A	48	LEU
1	A	61	ILE
1	A	71	TYR
1	A	95	THR
1	A	100	ARG
1	A	123	THR
1	A	124	LEU

*Continued on next page...*

*Continued from previous page...*

Mol	Chain	Res	Type
1	A	130	LEU
1	A	151	GLN
1	A	210	THR
1	B	35	PHE
1	B	40	LEU
1	B	47	ARG
1	B	71	TYR
1	B	97	ASP
1	B	122	SER
1	B	123	THR
1	B	124	LEU
1	B	130	LEU
1	B	157	VAL
1	B	210	THR
1	C	40	LEU
1	C	47	ARG
1	C	48	LEU
1	C	71	TYR
1	C	97	ASP
1	C	124	LEU
1	C	130	LEU
1	C	157	VAL
1	D	40	LEU
1	D	55	GLU
1	D	71	TYR
1	D	100	ARG
1	D	130	LEU
1	D	143	GLN
1	D	150	ARG

Some sidechains can be flipped to improve hydrogen bonding and reduce clashes. All (2) such sidechains are listed below:

Mol	Chain	Res	Type
1	B	60	HIS
1	D	60	HIS

### 5.3.3 RNA ⓘ

There are no RNA molecules in this entry.

## 5.4 Non-standard residues in protein, DNA, RNA chains [i](#)

There are no non-standard protein/DNA/RNA residues in this entry.

## 5.5 Carbohydrates [i](#)

There are no carbohydrates in this entry.

## 5.6 Ligand geometry [i](#)

Of 8 ligands modelled in this entry, 4 are monoatomic - leaving 4 for Mogul analysis.

In the following table, the Counts columns list the number of bonds (or angles) for which Mogul statistics could be retrieved, the number of bonds (or angles) that are observed in the model and the number of bonds (or angles) that are defined in the chemical component dictionary. The Link column lists molecule types, if any, to which the group is linked. The Z score for a bond length (or angle) is the number of standard deviations the observed value is removed from the expected value. A bond length (or angle) with  $|Z| > 2$  is considered an outlier worth inspection. RMSZ is the root-mean-square of all Z scores of the bond lengths (or angles).

Mol	Type	Chain	Res	Link	Bond lengths			Bond angles		
					Counts	RMSZ	# $ Z  > 2$	Counts	RMSZ	# $ Z  > 2$
2	3L6	A	301	-	20,25,25	2.52	6 (30%)	22,35,35	2.95	7 (31%)
2	3L6	B	301	-	20,25,25	2.58	5 (25%)	22,35,35	2.91	7 (31%)
2	3L6	C	301	-	20,25,25	2.53	6 (30%)	22,35,35	2.89	7 (31%)
2	3L6	D	301	-	20,25,25	2.57	5 (25%)	22,35,35	2.89	7 (31%)

In the following table, the Chirals column lists the number of chiral outliers, the number of chiral centers analysed, the number of these observed in the model and the number defined in the chemical component dictionary. Similar counts are reported in the Torsion and Rings columns. '-' means no outliers of that kind were identified.

Mol	Type	Chain	Res	Link	Chirals	Torsions	Rings
2	3L6	A	301	-	-	0/15/15/15	0/2/2/2
2	3L6	B	301	-	-	0/15/15/15	0/2/2/2
2	3L6	C	301	-	-	0/15/15/15	0/2/2/2
2	3L6	D	301	-	-	0/15/15/15	0/2/2/2

All (22) bond length outliers are listed below:

Mol	Chain	Res	Type	Atoms	Z	Observed(Å)	Ideal(Å)
2	C	301	3L6	CAG-NAA	-2.22	1.27	1.45
2	A	301	3L6	CAG-NAA	-2.22	1.27	1.45

*Continued on next page...*

*Continued from previous page...*

Mol	Chain	Res	Type	Atoms	Z	Observed(Å)	Ideal(Å)
2	D	301	3L6	CAG-NAA	-2.20	1.27	1.45
2	B	301	3L6	CAG-NAA	-2.20	1.27	1.45
2	C	301	3L6	PAX-OAF	2.06	1.59	1.54
2	A	301	3L6	PAX-OAF	2.16	1.60	1.54
2	C	301	3L6	PAX-OAD	2.74	1.56	1.50
2	A	301	3L6	PAX-OAD	2.75	1.56	1.50
2	D	301	3L6	PAX-OAD	4.17	1.59	1.50
2	A	301	3L6	C2-N2	4.18	1.42	1.34
2	D	301	3L6	C2-N2	4.23	1.42	1.34
2	C	301	3L6	C2-N2	4.24	1.42	1.34
2	B	301	3L6	PAX-OAD	4.26	1.59	1.50
2	B	301	3L6	C2-N2	4.31	1.42	1.34
2	D	301	3L6	PAX-CAN	5.80	1.84	1.79
2	B	301	3L6	PAX-CAN	5.87	1.85	1.79
2	C	301	3L6	PAX-CAN	5.96	1.85	1.79
2	A	301	3L6	PAX-CAN	6.00	1.85	1.79
2	B	301	3L6	O6-C6	6.45	1.40	1.24
2	D	301	3L6	O6-C6	6.51	1.40	1.24
2	C	301	3L6	O6-C6	6.51	1.40	1.24
2	A	301	3L6	O6-C6	6.52	1.40	1.24

All (28) bond angle outliers are listed below:

Mol	Chain	Res	Type	Atoms	Z	Observed(°)	Ideal(°)
2	B	301	3L6	N3-C2-N1	-4.82	120.11	127.44
2	A	301	3L6	N3-C2-N1	-4.71	120.28	127.44
2	C	301	3L6	N3-C2-N1	-4.69	120.30	127.44
2	D	301	3L6	N3-C2-N1	-4.64	120.37	127.44
2	A	301	3L6	C5-C6-N1	-4.16	117.90	123.59
2	D	301	3L6	C5-C6-N1	-4.11	117.97	123.59
2	C	301	3L6	C5-C6-N1	-4.06	118.03	123.59
2	B	301	3L6	C5-C6-N1	-4.03	118.07	123.59
2	A	301	3L6	C4-C5-N7	-3.04	106.68	109.48
2	C	301	3L6	C6-C5-C4	-2.97	117.35	120.90
2	D	301	3L6	C4-C5-N7	-2.93	106.78	109.48
2	B	301	3L6	C4-C5-N7	-2.92	106.79	109.48
2	A	301	3L6	C6-C5-C4	-2.91	117.42	120.90
2	D	301	3L6	C6-C5-C4	-2.88	117.46	120.90
2	B	301	3L6	C6-C5-C4	-2.87	117.47	120.90
2	C	301	3L6	C4-C5-N7	-2.84	106.87	109.48
2	D	301	3L6	CAI-CAJ-NAV	2.09	119.14	113.89
2	C	301	3L6	CAI-CAJ-NAV	2.44	120.04	113.89

*Continued on next page...*

*Continued from previous page...*

Mol	Chain	Res	Type	Atoms	Z	Observed(°)	Ideal(°)
2	B	301	3L6	CAI-CAJ-NAV	2.67	120.60	113.89
2	A	301	3L6	CAI-CAJ-NAV	2.71	120.72	113.89
2	D	301	3L6	C6-N1-C2	4.74	122.51	115.94
2	B	301	3L6	C6-N1-C2	4.74	122.51	115.94
2	C	301	3L6	C6-N1-C2	4.75	122.54	115.94
2	A	301	3L6	C6-N1-C2	4.86	122.68	115.94
2	C	301	3L6	CAI-CAG-NAA	9.12	179.46	112.74
2	B	301	3L6	CAI-CAG-NAA	9.14	179.63	112.74
2	A	301	3L6	CAI-CAG-NAA	9.16	179.73	112.74
2	D	301	3L6	CAI-CAG-NAA	9.16	179.75	112.74

There are no chirality outliers.

There are no torsion outliers.

There are no ring outliers.

4 monomers are involved in 6 short contacts:

Mol	Chain	Res	Type	Clashes	Symm-Clashes
2	A	301	3L6	1	0
2	B	301	3L6	1	0
2	C	301	3L6	2	0
2	D	301	3L6	2	0

## 5.7 Other polymers [i](#)

There are no such residues in this entry.

## 5.8 Polymer linkage issues [i](#)

There are no chain breaks in this entry.

## 6 Fit of model and data

### 6.1 Protein, DNA and RNA chains

In the following table, the column labelled ‘#RSRZ> 2’ contains the number (and percentage) of RSRZ outliers, followed by percent RSRZ outliers for the chain as percentile scores relative to all X-ray entries and entries of similar resolution. The OWAB column contains the minimum, median, 95<sup>th</sup> percentile and maximum values of the occupancy-weighted average B-factor per residue. The column labelled ‘Q< 0.9’ lists the number of (and percentage) of residues with an average occupancy less than 0.9.

Mol	Chain	Analysed	<RSRZ>	#RSRZ>2		OWAB(Å <sup>2</sup> )	Q<0.9
1	A	201/217 (92%)	0.37	14 (6%)	19 22	41, 60, 104, 127	0
1	B	200/217 (92%)	0.32	15 (7%)	17 19	46, 68, 105, 121	0
1	C	202/217 (93%)	0.40	14 (6%)	20 23	43, 74, 105, 118	0
1	D	196/217 (90%)	0.75	25 (12%)	5 5	55, 87, 128, 154	0
All	All	799/868 (92%)	0.46	68 (8%)	13 15	41, 72, 114, 154	0

All (68) RSRZ outliers are listed below:

Mol	Chain	Res	Type	RSRZ
1	D	217	ALA	11.1
1	C	217	ALA	7.9
1	D	167	THR	7.0
1	A	217	ALA	6.9
1	D	153	ASN	6.6
1	D	172	GLY	6.2
1	D	168	PRO	5.8
1	D	171	VAL	5.4
1	C	116	ILE	5.3
1	B	217	ALA	5.3
1	D	169	ARG	4.7
1	B	151	GLN	4.7
1	D	151	GLN	4.7
1	B	148	LEU	4.6
1	D	125	THR	4.6
1	C	101	LEU	4.4
1	A	90	ARG	4.3
1	A	89	ASP	4.3
1	C	4	SER	4.1
1	B	116	ILE	4.0
1	A	92	ILE	3.9

*Continued on next page...*



*Continued from previous page...*

Mol	Chain	Res	Type	RSRZ
1	A	3	ARG	3.7
1	D	170	SER	3.7
1	B	153	ASN	3.5
1	D	118	GLY	3.4
1	D	126	GLY	3.4
1	A	125	THR	3.4
1	B	122	SER	3.3
1	A	116	ILE	3.3
1	C	89	ASP	3.2
1	D	173	TYR	3.2
1	A	130	LEU	3.2
1	C	168	PRO	3.1
1	A	131	ILE	3.1
1	C	12	ASP	2.8
1	B	168	PRO	2.8
1	D	184	ASP	2.8
1	B	90	ARG	2.8
1	D	216	LYS	2.7
1	B	4	SER	2.6
1	B	3	ARG	2.5
1	D	148	LEU	2.5
1	A	12	ASP	2.5
1	C	162	LEU	2.5
1	B	210	THR	2.4
1	D	4	SER	2.4
1	C	167	THR	2.4
1	B	130	LEU	2.4
1	C	29	GLU	2.3
1	B	89	ASP	2.3
1	C	205	CYS	2.3
1	D	116	ILE	2.3
1	D	205	CYS	2.2
1	B	131	ILE	2.2
1	A	209	GLU	2.2
1	D	33	ARG	2.2
1	C	169	ARG	2.2
1	A	117	GLY	2.2
1	B	156	MET	2.1
1	A	58	GLY	2.1
1	D	140	LYS	2.1
1	D	54	LYS	2.1
1	A	127	LYS	2.0

*Continued on next page...*

*Continued from previous page...*

Mol	Chain	Res	Type	RSRZ
1	C	14	PRO	2.0
1	D	117	GLY	2.0
1	D	155	LYS	2.0
1	D	59	HIS	2.0
1	C	114	LYS	2.0

## 6.2 Non-standard residues in protein, DNA, RNA chains [i](#)

There are no non-standard protein/DNA/RNA residues in this entry.

## 6.3 Carbohydrates [i](#)

There are no carbohydrates in this entry.

## 6.4 Ligands [i](#)

In the following table, the Atoms column lists the number of modelled atoms in the group and the number defined in the chemical component dictionary. LLDF column lists the quality of electron density of the group with respect to its neighbouring residues in protein, DNA or RNA chains. The B-factors column lists the minimum, median, 95<sup>th</sup> percentile and maximum values of B factors of atoms in the group. The column labelled 'Q < 0.9' lists the number of atoms with occupancy less than 0.9.

Mol	Type	Chain	Res	Atoms	RSCC	RSR	LLDF	B-factors(Å <sup>2</sup> )	Q<0.9
2	3L6	A	301	24/24	0.94	0.19	0.62	53,66,96,99	0
2	3L6	B	301	24/24	0.94	0.17	0.34	60,73,97,99	0
2	3L6	C	301	24/24	0.92	0.18	-0.02	75,92,103,156	0
2	3L6	D	301	24/24	0.93	0.17	-0.69	85,96,114,213	0
3	MG	C	302	1/1	0.86	0.27	-	79,79,79,79	0
3	MG	A	302	1/1	0.94	0.26	-	61,61,61,61	0
3	MG	D	302	1/1	0.92	0.28	-	73,73,73,73	0
3	MG	B	302	1/1	0.91	0.27	-	72,72,72,72	0

## 6.5 Other polymers [i](#)

There are no such residues in this entry.