



Full wwPDB X-ray Structure Validation Report ⓘ

Feb 1, 2016 – 05:37 AM GMT

PDB ID : 2RFC
Title : Ligand bound (4-phenylimidazole) Crystal Structure of a Cytochrome P450
from the Thermoacidophilic Archaeon *Picrophilus Torridus*
Authors : Ho, W.W.; Li, H.; Poulos, T.L.; Nishida, C.R.; Ortiz de Montellano, P.R.
Deposited on : 2007-09-28
Resolution : 3.10 Å(reported)

This is a Full wwPDB X-ray Structure Validation Report for a publicly released PDB entry.
We welcome your comments at validation@mail.wwpdb.org
A user guide is available at
<http://wwpdb.org/validation/2016/XrayValidationReportHelp>
with specific help available everywhere you see the ⓘ symbol.

The following versions of software and data (see [references ⓘ](#)) were used in the production of this report:

MolProbity : 4.02b-467
Mogul : 1.7 (RC4), CSD as536be (2015)
Xtriage (Phenix) : 1.9-1692
EDS : rb-20026688
Percentile statistics : 20151230.v01 (using entries in the PDB archive December 30th 2015)
Refmac : 5.8.0135
CCP4 : 6.5.0
Ideal geometry (proteins) : Engh & Huber (2001)
Ideal geometry (DNA, RNA) : Parkinson et al. (1996)
Validation Pipeline (wwPDB-VP) : trunk26865

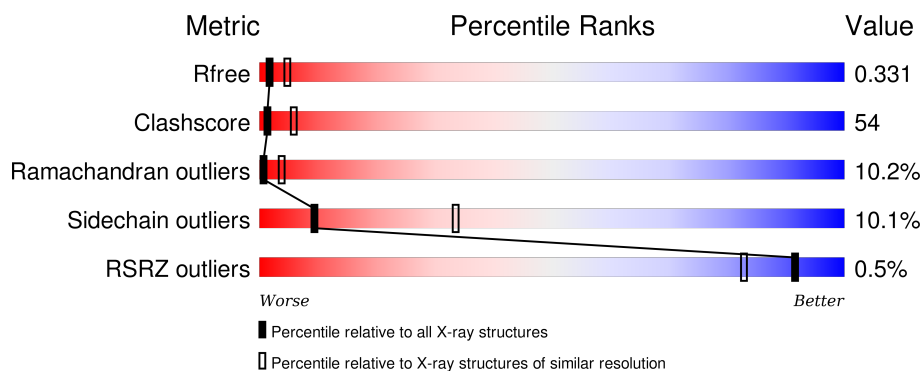
1 Overall quality at a glance

The following experimental techniques were used to determine the structure:

X-RAY DIFFRACTION

The reported resolution of this entry is 3.10 Å.

Percentile scores (ranging between 0-100) for global validation metrics of the entry are shown in the following graphic. The table shows the number of entries on which the scores are based.



Metric	Whole archive (#Entries)	Similar resolution (#Entries, resolution range(Å))
R_{free}	91344	1114 (3.14-3.06)
Clashscore	102246	1222 (3.14-3.06)
Ramachandran outliers	100387	1174 (3.14-3.06)
Sidechain outliers	100360	1174 (3.14-3.06)
RSRZ outliers	91569	1119 (3.14-3.06)

The table below summarises the geometric issues observed across the polymeric chains and their fit to the electron density. The red, orange, yellow and green segments on the lower bar indicate the fraction of residues that contain outliers for ≥ 3 , 2, 1 and 0 types of geometric quality criteria. A grey segment represents the fraction of residues that are not modelled. The numeric value for each fraction is indicated below the corresponding segment, with a dot representing fractions $\leq 5\%$. The upper red bar (where present) indicates the fraction of residues that have poor fit to the electron density. The numeric value is given above the bar.

Mol	Chain	Length	Quality of chain
1	A	343	<div> <div>29%</div> <div>59%</div> <div>11%</div> <div>.</div> </div>
1	B	343	<div> <div>28%</div> <div>56%</div> <div>13%</div> <div>..</div> </div>
1	C	343	<div> <div>25%</div> <div>58%</div> <div>15%</div> <div>..</div> </div>
1	D	343	<div> <div>27%</div> <div>59%</div> <div>13%</div> <div>.</div> </div>

The following table lists non-polymeric compounds, carbohydrate monomers and non-standard residues in protein, DNA, RNA chains that are outliers for geometric or electron-density-fit crite-

ria:

Mol	Type	Chain	Res	Chirality	Geometry	Clashes	Electron density
3	PIM	B	411	-	-	-	X

2 Entry composition [i](#)

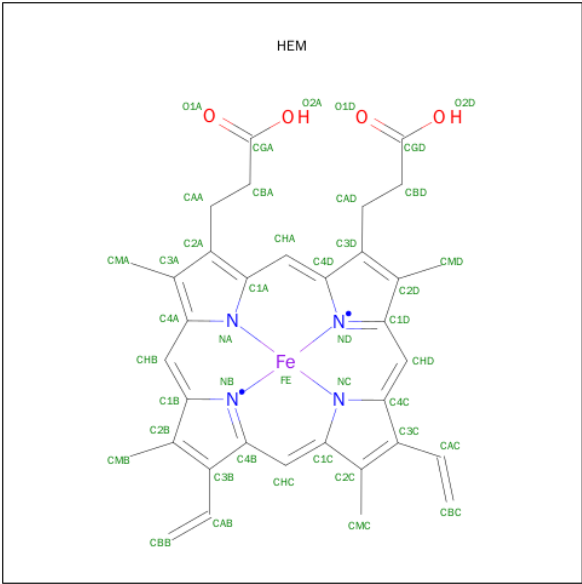
There are 4 unique types of molecules in this entry. The entry contains 11230 atoms, of which 0 are hydrogens and 0 are deuteriums.

In the tables below, the ZeroOcc column contains the number of atoms modelled with zero occupancy, the AltConf column contains the number of residues with at least one atom in alternate conformation and the Trace column contains the number of residues modelled with at most 2 atoms.

- Molecule 1 is a protein called Cytochrome P450.

Mol	Chain	Residues	Atoms					ZeroOcc	AltConf	Trace
1	A	338	Total	C	N	O	S	0	0	0
			2752	1763	467	511	11			
1	B	338	Total	C	N	O	S	0	0	0
			2752	1763	467	511	11			
1	C	338	Total	C	N	O	S	0	0	0
			2752	1763	467	511	11			
1	D	338	Total	C	N	O	S	0	0	0
			2739	1756	462	510	11			

- Molecule 2 is PROTOPORPHYRIN IX CONTAINING FE (three-letter code: HEM) (formula: $C_{34}H_{32}FeN_4O_4$).



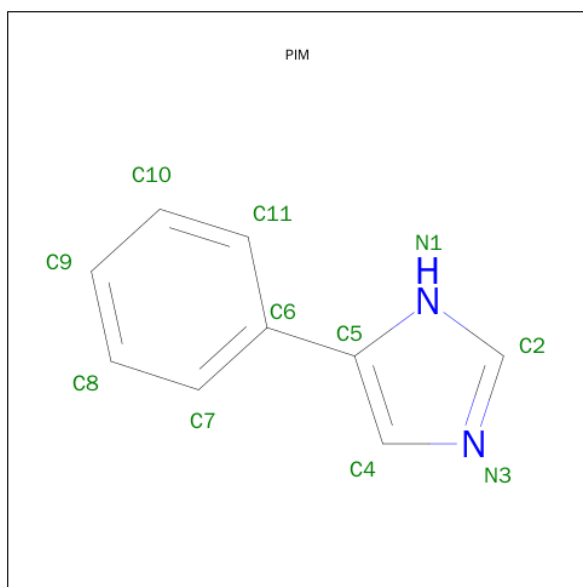
Mol	Chain	Residues	Atoms				ZeroOcc	AltConf
2	A	1	Total	C	Fe	N	O	0
			43	34	1	4	4	
2	B	1	Total	C	Fe	N	O	0
			43	34	1	4	4	

Continued on next page...

Continued from previous page...

Mol	Chain	Residues	Atoms				ZeroOcc	AltConf
2	C	1	Total	C	Fe	N	O	
			43	34	1	4	4	
2	D	1	Total	C	Fe	N	O	
			43	34	1	4	4	

- Molecule 3 is 4-PHENYL-1H-IMIDAZOLE (three-letter code: PIM) (formula: C₉H₈N₂).



Mol	Chain	Residues	Atoms			ZeroOcc	AltConf
3	A	1	Total	C	N		
			11	9	2	0	0
3	B	1	Total	C	N		
			11	9	2	0	0
3	C	1	Total	C	N		
			11	9	2	0	0
3	D	1	Total	C	N		
			11	9	2	0	0

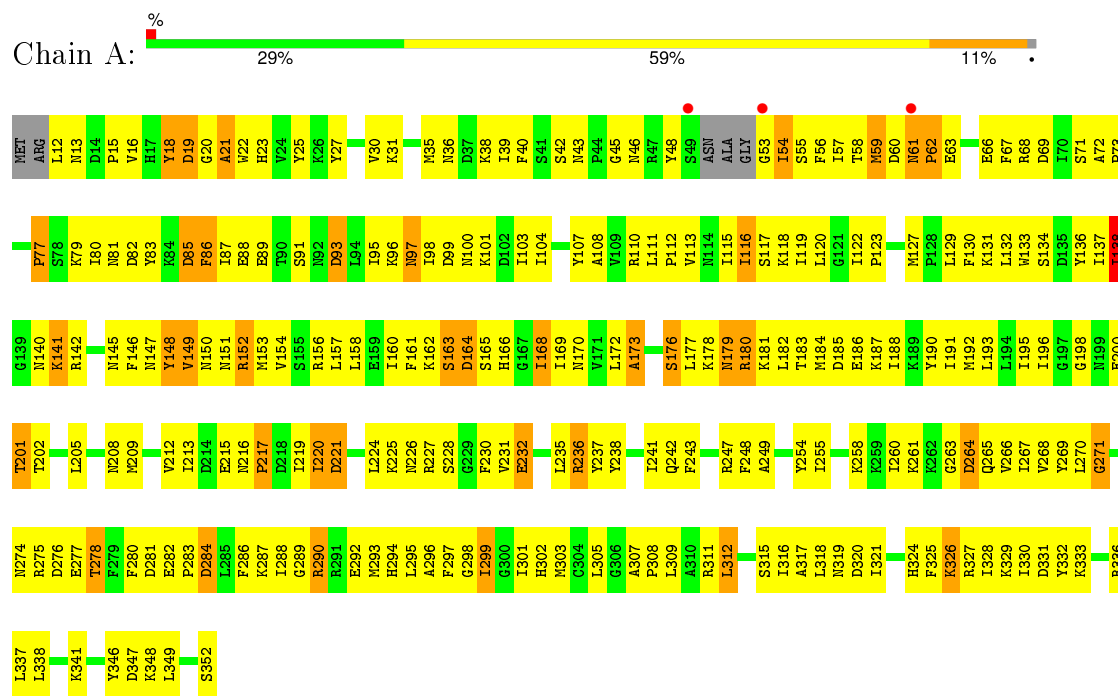
- Molecule 4 is water.

Mol	Chain	Residues	Atoms		ZeroOcc	AltConf
4	A	5	Total	O		
			5	5	0	0
4	B	5	Total	O		
			5	5	0	0
4	C	9	Total	O		
			9	9	0	0

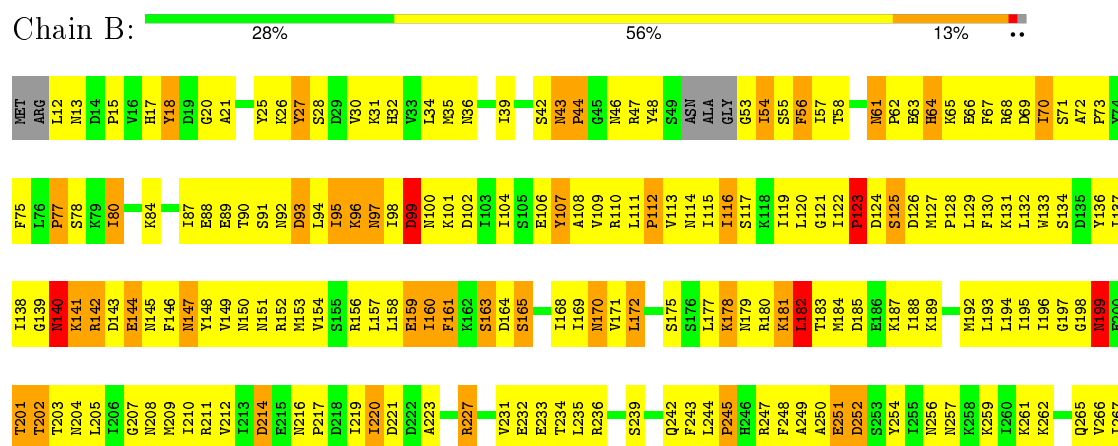
3 Residue-property plots

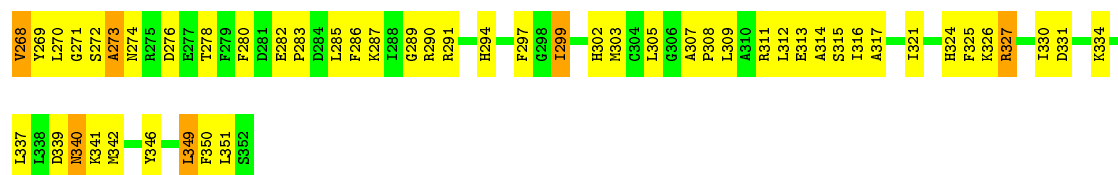
These plots are drawn for all protein, RNA and DNA chains in the entry. The first graphic for a chain summarises the proportions of errors displayed in the second graphic. The second graphic shows the sequence view annotated by issues in geometry and electron density. Residues are color-coded according to the number of geometric quality criteria for which they contain at least one outlier: green = 0, yellow = 1, orange = 2 and red = 3 or more. A red dot above a residue indicates a poor fit to the electron density ($RSRZ > 2$). Stretches of 2 or more consecutive residues without any outlier are shown as a green connector. Residues present in the sample, but not in the model, are shown in grey.

• Molecule 1: Cytochrome P450



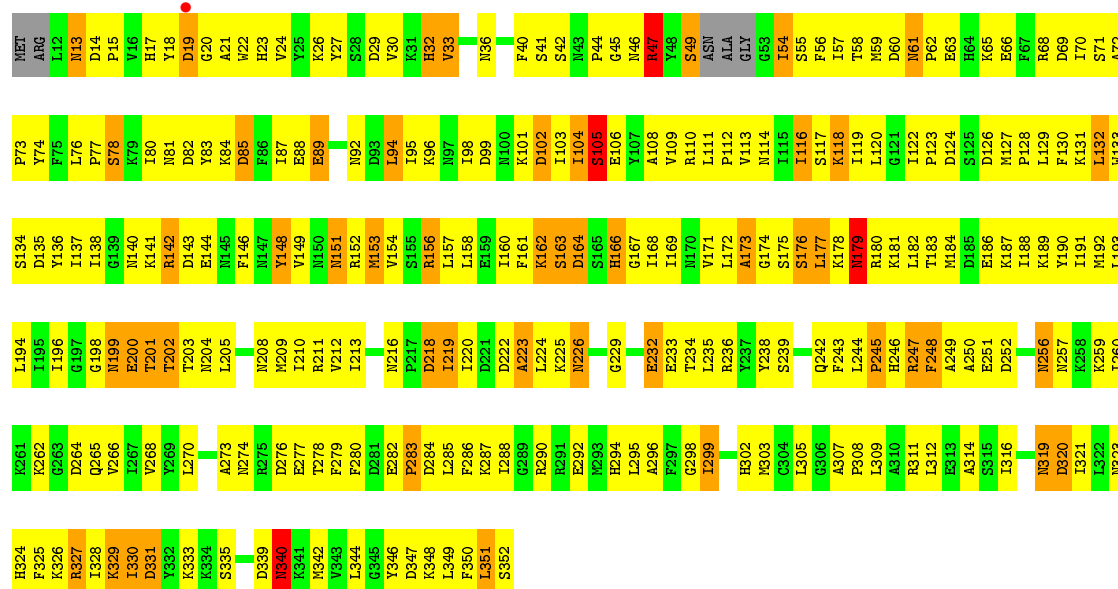
• Molecule 1: Cytochrome P450





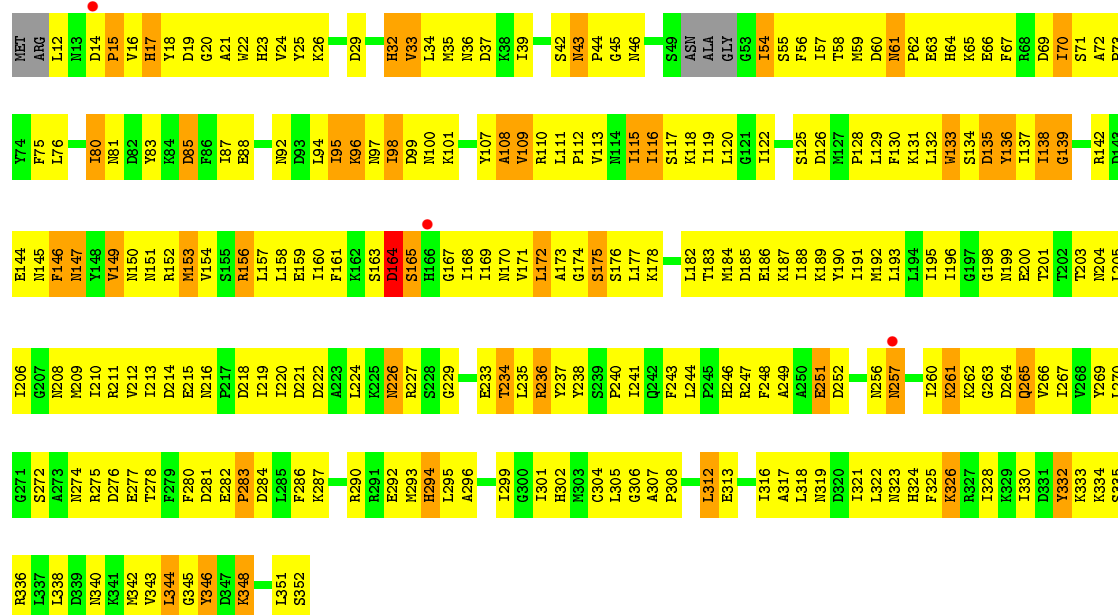
• Molecule 1: Cytochrome P450

Chain C: 25% 58% 15% ..



• Molecule 1: Cytochrome P450

Chain D: 27% 59% 13% .



4 Data and refinement statistics

Property	Value	Source
Space group	P 1 21 1	Depositor
Cell constants a, b, c, α , β , γ	48.52Å 141.01Å 101.03Å 90.00° 90.30° 90.00°	Depositor
Resolution (Å)	41.85 – 3.10 41.85 – 3.08	Depositor EDS
% Data completeness (in resolution range)	95.5 (41.85-3.10) 94.3 (41.85-3.08)	Depositor EDS
R_{merge}	0.12	Depositor
R_{sym}	0.12	Depositor
$\langle I/\sigma(I) \rangle$ ¹	2.82 (at 3.06Å)	Xtriage
Refinement program	CNS 1.2	Depositor
R, R_{free}	0.229 , 0.334 0.229 , 0.331	Depositor DCC
R_{free} test set	1141 reflections (5.09%)	DCC
Wilson B-factor (Å ²)	49.3	Xtriage
Anisotropy	0.232	Xtriage
Bulk solvent k_{sol} (e/Å ³), B_{sol} (Å ²)	0.34 , 54.1	EDS
Estimated twinning fraction	0.029 for h,-k,-l	Xtriage
L-test for twinning ²	$\langle L \rangle = 0.49$, $\langle L^2 \rangle = 0.32$	Xtriage
Outliers	0 of 23827 reflections	Xtriage
F_o, F_c correlation	0.90	EDS
Total number of atoms	11230	wwPDB-VP
Average B, all atoms (Å ²)	42.0	wwPDB-VP

Xtriage's analysis on translational NCS is as follows: *The largest off-origin peak in the Patterson function is 10.88% of the height of the origin peak. No significant pseudotranslation is detected.*

¹Intensities estimated from amplitudes.

²Theoretical values of $\langle |L| \rangle$, $\langle L^2 \rangle$ for acentric reflections are 0.5, 0.375 respectively for untwinned datasets, and 0.333, 0.2 for perfectly twinned datasets.

5 Model quality

5.1 Standard geometry

Bond lengths and bond angles in the following residue types are not validated in this section: HEM, PIM

The Z score for a bond length (or angle) is the number of standard deviations the observed value is removed from the expected value. A bond length (or angle) with $|Z| > 5$ is considered an outlier worth inspection. RMSZ is the root-mean-square of all Z scores of the bond lengths (or angles).

Mol	Chain	Bond lengths		Bond angles	
		RMSZ	# Z >5	RMSZ	# Z >5
1	A	0.48	0/2809	0.72	2/3785 (0.1%)
1	B	0.49	0/2809	0.69	0/3785
1	C	0.50	0/2809	0.71	1/3785 (0.0%)
1	D	0.47	0/2796	0.72	1/3770 (0.0%)
All	All	0.48	0/11223	0.71	4/15125 (0.0%)

Chiral center outliers are detected by calculating the chiral volume of a chiral center and verifying if the center is modelled as a planar moiety or with the opposite hand. A planarity outlier is detected by checking planarity of atoms in a peptide group, atoms in a mainchain group or atoms of a sidechain that are expected to be planar.

Mol	Chain	#Chirality outliers	#Planarity outliers
1	A	0	1

There are no bond length outliers.

All (4) bond angle outliers are listed below:

Mol	Chain	Res	Type	Atoms	Z	Observed(°)	Ideal(°)
1	D	304	CYS	CA-CB-SG	-6.37	102.53	114.00
1	A	149	VAL	N-CA-C	-6.08	94.58	111.00
1	C	199	ASN	N-CA-C	5.23	125.12	111.00
1	A	224	LEU	CA-CB-CG	5.14	127.12	115.30

There are no chirality outliers.

All (1) planarity outliers are listed below:

Mol	Chain	Res	Type	Group
1	A	148	TYR	Sidechain

5.2 Too-close contacts ⓘ

In the following table, the Non-H and H(model) columns list the number of non-hydrogen atoms and hydrogen atoms in the chain respectively. The H(added) column lists the number of hydrogen atoms added and optimized by MolProbity. The Clashes column lists the number of clashes within the asymmetric unit, whereas Symm-Clashes lists symmetry related clashes.

Mol	Chain	Non-H	H(model)	H(added)	Clashes	Symm-Clashes
1	A	2752	0	2756	280	0
1	B	2752	0	2756	311	0
1	C	2752	0	2756	315	0
1	D	2739	0	2730	307	0
2	A	43	0	30	6	0
2	B	43	0	30	6	0
2	C	43	0	30	10	0
2	D	43	0	30	11	0
3	A	11	0	8	1	0
3	B	11	0	8	0	0
3	C	11	0	8	0	0
3	D	11	0	8	1	0
4	A	5	0	0	0	0
4	B	5	0	0	0	0
4	C	9	0	0	0	0
All	All	11230	0	11150	1202	0

The all-atom clashscore is defined as the number of clashes found per 1000 atoms (including hydrogen atoms). The all-atom clashscore for this structure is 54.

All (1202) close contacts within the same asymmetric unit are listed below, sorted by their clash magnitude.

Atom-1	Atom-2	Interatomic distance (Å)	Clash overlap (Å)
1:C:184:MET:HA	1:C:187:LYS:HE3	1.23	1.14
1:A:274:ASN:HD21	1:A:294:HIS:HB2	0.98	1.12
1:A:236:ARG:HA	1:A:274:ASN:ND2	1.71	1.06
1:B:183:THR:HG22	1:B:185:ASP:H	1.17	1.06
1:A:236:ARG:HA	1:A:274:ASN:HD22	1.11	1.05
1:C:126:ASP:HA	1:C:129:LEU:HD23	1.36	1.05
1:A:274:ASN:ND2	1:A:294:HIS:HB2	1.71	1.05
1:C:61:ASN:HB3	1:C:62:PRO:HD3	1.34	1.04
1:D:135:ASP:HA	1:D:138:ILE:HD12	1.39	1.04
1:C:177:LEU:HD12	1:C:178:LYS:H	1.17	1.02
1:C:176:SER:HB2	1:C:180:ARG:O	1.61	1.01
1:C:129:LEU:H	1:C:129:LEU:HD22	1.25	1.00

Continued on next page...

Continued from previous page...

Atom-1	Atom-2	Interatomic distance (Å)	Clash overlap (Å)
1:C:56:PHE:HA	1:C:59:MET:HG2	1.44	1.00
1:C:330:ILE:HG22	1:C:331:ASP:H	1.23	0.99
1:C:326:LYS:O	1:C:327:ARG:HG2	1.62	0.99
1:B:138:ILE:HD11	1:B:140:ASN:HB2	1.46	0.98
1:C:73:PRO:HG2	1:C:74:TYR:HD1	1.27	0.98
1:D:56:PHE:HA	1:D:59:MET:HG3	1.45	0.97
1:A:166:HIS:HA	1:A:170:ASN:HD22	1.30	0.95
1:C:61:ASN:HB3	1:C:62:PRO:CD	1.96	0.94
1:A:183:THR:HB	1:A:186:GLU:HG3	1.49	0.93
1:D:208:ASN:HD22	1:D:238:TYR:HB3	1.32	0.93
1:D:135:ASP:CG	1:D:136:TYR:H	1.66	0.93
1:A:330:ILE:HD13	1:A:349:LEU:HD11	1.51	0.92
1:A:236:ARG:CA	1:A:274:ASN:HD22	1.82	0.92
1:D:70:ILE:HG12	1:D:177:LEU:HD21	1.52	0.92
1:B:340:ASN:ND2	1:B:342:MET:H	1.68	0.91
1:B:53:GLY:HA3	1:B:58:THR:HG21	1.50	0.91
1:D:110:ARG:O	1:D:113:VAL:HG12	1.71	0.90
1:D:198:GLY:HA2	2:D:410:HEM:HMC2	1.52	0.89
1:B:116:ILE:O	1:B:120:LEU:HG	1.73	0.89
1:C:56:PHE:HA	1:C:59:MET:CG	2.02	0.88
1:B:138:ILE:HG13	1:B:139:GLY:N	1.89	0.87
1:A:87:ILE:HD12	1:A:312:LEU:HD13	1.57	0.86
1:C:176:SER:HA	1:C:182:LEU:CD1	2.06	0.86
1:C:177:LEU:HD12	1:C:178:LYS:N	1.89	0.86
1:B:251:GLU:HA	1:B:262:LYS:HB2	1.56	0.86
1:A:176:SER:HB2	1:A:181:LYS:HA	1.55	0.86
1:B:101:LYS:HB3	1:B:106:GLU:HG3	1.57	0.85
1:A:307:ALA:HB3	1:A:308:PRO:HD3	1.57	0.85
1:B:232:GLU:HA	1:B:235:LEU:HD12	1.58	0.85
1:C:116:ILE:HG21	1:C:199:ASN:HD21	1.42	0.84
1:C:73:PRO:HG2	1:C:74:TYR:CD1	2.12	0.84
1:D:183:THR:HB	1:D:186:GLU:HG3	1.58	0.84
1:B:56:PHE:H	1:B:56:PHE:HD2	1.23	0.84
1:C:126:ASP:CA	1:C:129:LEU:HD23	2.08	0.84
1:B:259:LYS:HZ3	1:B:261:LYS:HE3	1.42	0.84
1:C:162:LYS:NZ	1:C:162:LYS:HA	1.92	0.84
1:B:138:ILE:HG13	1:B:139:GLY:H	1.42	0.84
1:B:133:TRP:O	1:B:137:ILE:HG12	1.78	0.84
1:D:157:LEU:HD23	1:D:188:ILE:HG23	1.61	0.82
1:D:54:ILE:O	1:D:193:LEU:HD13	1.77	0.82
1:A:183:THR:HB	1:A:186:GLU:CG	2.09	0.82

Continued on next page...

Continued from previous page...

Atom-1	Atom-2	Interatomic distance (Å)	Clash overlap (Å)
1:A:27:TYR:CE2	1:A:31:LYS:HD2	2.15	0.81
1:A:274:ASN:HD21	1:A:294:HIS:CB	1.89	0.81
1:D:87:ILE:HG12	1:D:115:ILE:HD12	1.62	0.81
1:C:14:ASP:HB3	1:C:15:PRO:HD2	1.61	0.81
1:B:12:LEU:HD22	1:B:272:SER:OG	1.80	0.81
1:A:55:SER:HB3	1:A:193:LEU:HD22	1.61	0.81
1:A:166:HIS:HA	1:A:170:ASN:ND2	1.96	0.80
1:A:180:ARG:HD3	1:A:181:LYS:O	1.80	0.80
1:D:15:PRO:HA	1:D:23:HIS:O	1.79	0.80
1:D:287:LYS:HD3	1:D:290:ARG:NH2	1.96	0.80
1:C:136:TYR:HA	1:C:141:LYS:HB3	1.64	0.80
1:C:85:ASP:O	1:C:89:GLU:HB2	1.81	0.80
1:A:236:ARG:HB3	1:A:236:ARG:HH11	1.46	0.80
1:D:227:ARG:HG2	1:D:318:LEU:HD23	1.64	0.79
1:A:137:ILE:H	1:A:137:ILE:HD12	1.44	0.79
1:A:201:THR:HB	2:A:410:HEM:HAB	1.65	0.79
1:B:66:GLU:OE1	1:B:178:LYS:HB2	1.82	0.79
1:D:301:ILE:HG13	1:D:302:HIS:ND1	1.97	0.79
1:C:87:ILE:HG22	1:C:316:ILE:HG21	1.64	0.79
1:C:148:TYR:HD2	1:C:151:ASN:HB2	1.48	0.79
1:A:137:ILE:HG21	1:A:196:ILE:HD13	1.65	0.78
1:D:135:ASP:HA	1:D:138:ILE:CD1	2.13	0.78
1:A:176:SER:HB3	1:A:181:LYS:HD3	1.66	0.78
1:C:128:PRO:HA	1:C:131:LYS:HE2	1.63	0.78
1:A:30:VAL:HG13	1:A:268:VAL:HG13	1.66	0.78
1:D:137:ILE:HD12	1:D:196:ILE:HG12	1.64	0.78
1:D:136:TYR:CE1	1:D:149:VAL:HG21	2.20	0.77
1:D:176:SER:C	1:D:177:LEU:HD22	2.04	0.77
1:A:66:GLU:OE1	1:A:178:LYS:HG3	1.85	0.77
1:D:164:ASP:O	1:D:165:SER:HB2	1.85	0.77
1:C:351:LEU:HD12	1:C:351:LEU:H	1.48	0.77
1:B:137:ILE:HG22	1:B:196:ILE:HG13	1.66	0.76
1:D:265:GLN:HE22	1:D:267:ILE:HG13	1.51	0.76
1:C:72:ALA:N	1:C:73:PRO:HD2	2.00	0.76
1:A:99:ASP:O	1:A:101:LYS:HG3	1.84	0.76
1:C:116:ILE:HG21	1:C:199:ASN:ND2	2.01	0.76
1:C:138:ILE:CD1	1:C:200:GLU:HB2	2.16	0.76
1:A:338:LEU:HD23	1:A:347:ASP:HB2	1.67	0.76
1:C:138:ILE:HD11	1:C:200:GLU:HB2	1.66	0.76
1:D:183:THR:HG22	1:D:185:ASP:H	1.50	0.76
1:C:276:ASP:OD1	1:C:278:THR:HB	1.86	0.75

Continued on next page...

Continued from previous page...

Atom-1	Atom-2	Interatomic distance (Å)	Clash overlap (Å)
1:A:150:ASN:O	1:A:154:VAL:HG23	1.87	0.75
1:C:226:ASN:ND2	1:C:229:GLY:H	1.84	0.75
1:A:176:SER:CB	1:A:181:LYS:HA	2.17	0.75
1:B:55:SER:HB3	1:B:193:LEU:HD22	1.69	0.75
1:B:340:ASN:HD22	1:B:340:ASN:C	1.91	0.75
1:A:120:LEU:O	1:A:169:ILE:HG13	1.87	0.75
1:A:91:SER:O	1:A:95:ILE:HG22	1.87	0.75
1:B:129:LEU:H	1:B:129:LEU:HD12	1.52	0.74
1:D:248:PHE:HA	1:D:264:ASP:O	1.87	0.74
1:C:26:LYS:O	1:C:30:VAL:HG23	1.87	0.74
1:A:220:ILE:HG22	1:A:221:ASP:N	2.02	0.74
1:D:227:ARG:NE	1:D:319:ASN:HD22	1.85	0.74
1:C:328:ILE:HD12	1:C:328:ILE:H	1.52	0.74
1:C:129:LEU:H	1:C:129:LEU:CD2	2.01	0.74
1:A:56:PHE:HA	1:A:59:MET:HB2	1.69	0.74
1:D:136:TYR:HE1	1:D:149:VAL:HG21	1.52	0.74
1:A:98:ILE:CD1	1:A:107:TYR:HB2	2.18	0.74
1:D:70:ILE:CG1	1:D:177:LEU:HD21	2.17	0.74
1:D:98:ILE:HD12	1:D:107:TYR:HB2	1.69	0.73
1:B:116:ILE:HA	1:B:119:ILE:HG22	1.69	0.73
1:A:137:ILE:N	1:A:137:ILE:HD12	2.03	0.73
1:C:330:ILE:HG22	1:C:331:ASP:N	2.00	0.73
1:D:75:PHE:HA	1:D:80:ILE:HD13	1.70	0.73
1:D:206:ILE:O	1:D:210:ILE:HG13	1.88	0.73
1:D:134:SER:OG	1:D:135:ASP:N	2.22	0.73
1:D:244:LEU:HD13	2:D:410:HEM:O1A	1.88	0.73
1:B:340:ASN:HD22	1:B:342:MET:H	1.35	0.73
1:A:129:LEU:O	1:A:132:LEU:HB3	1.89	0.73
1:A:93:ASP:HA	1:A:96:LYS:HE3	1.71	0.72
1:C:116:ILE:HG13	1:C:198:GLY:HA3	1.68	0.72
1:C:127:MET:HB2	1:C:128:PRO:HD3	1.71	0.72
1:C:126:ASP:HA	1:C:129:LEU:CD2	2.19	0.72
1:D:108:ALA:O	1:D:112:PRO:HD2	1.90	0.72
1:C:183:THR:HB	1:C:186:GLU:HG3	1.72	0.72
1:B:56:PHE:HD2	1:B:56:PHE:N	1.87	0.71
1:D:135:ASP:CG	1:D:136:TYR:N	2.39	0.71
1:C:294:HIS:CE1	1:C:296:ALA:HB3	2.24	0.71
1:D:319:ASN:O	1:D:323:ASN:HB2	1.89	0.71
1:C:176:SER:HB3	1:C:181:LYS:HD3	1.73	0.71
1:D:56:PHE:HA	1:D:59:MET:CG	2.20	0.71
1:A:22:TRP:CZ3	1:A:258:LYS:HD2	2.26	0.71

Continued on next page...

Continued from previous page...

Atom-1	Atom-2	Interatomic distance (Å)	Clash overlap (Å)
1:D:172:LEU:HD21	1:D:190:TYR:CD2	2.25	0.71
1:B:87:ILE:HB	1:B:316:ILE:HD12	1.73	0.71
1:A:173:ALA:O	1:A:187:LYS:NZ	2.18	0.71
1:D:184:MET:O	1:D:188:ILE:HG12	1.90	0.71
1:D:211:ARG:O	1:D:215:GLU:HG3	1.91	0.71
1:D:226:ASN:ND2	1:D:229:GLY:H	1.88	0.71
1:C:236:ARG:HG3	1:C:274:ASN:HB3	1.71	0.71
1:C:184:MET:HA	1:C:187:LYS:CE	2.13	0.71
1:A:280:PHE:O	1:A:283:PRO:HD3	1.91	0.71
1:A:201:THR:HG21	1:A:241:ILE:HD11	1.74	0.70
1:A:86:PHE:O	1:A:89:GLU:HB3	1.91	0.70
1:D:198:GLY:HA2	2:D:410:HEM:CMC	2.19	0.70
1:D:22:TRP:O	1:D:267:ILE:N	2.24	0.70
1:A:309:LEU:HD23	2:A:410:HEM:HAC	1.72	0.70
1:B:161:PHE:CE2	1:B:169:ILE:HG23	2.26	0.70
1:A:137:ILE:H	1:A:137:ILE:CD1	2.04	0.70
1:B:92:ASN:O	1:B:95:ILE:HG22	1.91	0.70
1:A:188:ILE:O	1:A:192:MET:HG3	1.90	0.70
1:D:265:GLN:HE22	1:D:267:ILE:CG1	2.04	0.70
1:C:103:ILE:HD11	1:C:351:LEU:HD11	1.73	0.70
1:D:80:ILE:HG23	1:D:312:LEU:HD12	1.74	0.70
1:A:184:MET:O	1:A:188:ILE:HG12	1.92	0.70
1:A:36:ASN:HB3	1:A:39:ILE:HD12	1.71	0.70
1:C:319:ASN:ND2	1:C:323:ASN:HD21	1.89	0.70
1:A:138:ILE:HG12	1:A:200:GLU:HG3	1.72	0.70
1:A:18:TYR:O	1:A:20:GLY:N	2.24	0.70
1:C:109:VAL:O	1:C:113:VAL:HG12	1.91	0.70
1:D:132:LEU:O	1:D:135:ASP:OD1	2.10	0.70
1:D:183:THR:O	1:D:187:LYS:HG3	1.91	0.70
1:D:137:ILE:CD1	1:D:196:ILE:HG12	2.21	0.70
1:B:259:LYS:HZ1	1:B:261:LYS:HG3	1.55	0.70
1:B:102:ASP:HB2	1:B:350:PHE:CZ	2.27	0.69
1:D:177:LEU:N	1:D:177:LEU:HD22	2.06	0.69
1:A:116:ILE:HG13	1:A:198:GLY:HA3	1.74	0.69
1:C:162:LYS:HZ3	1:C:162:LYS:HA	1.56	0.69
1:D:189:LYS:HA	1:D:192:MET:HG3	1.75	0.69
1:C:268:VAL:O	1:C:268:VAL:HG23	1.92	0.69
1:B:137:ILE:HG22	1:B:196:ILE:CG1	2.23	0.69
1:A:169:ILE:HG12	1:A:191:ILE:HD13	1.74	0.69
1:A:61:ASN:HB3	1:A:62:PRO:HD3	1.75	0.69
1:C:331:ASP:OD1	1:C:333:LYS:HB2	1.92	0.69

Continued on next page...

Continued from previous page...

Atom-1	Atom-2	Interatomic distance (Å)	Clash overlap (Å)
1:B:26:LYS:O	1:B:30:VAL:HG23	1.92	0.69
1:C:110:ARG:O	1:C:114:ASN:HB2	1.92	0.69
1:C:176:SER:HA	1:C:182:LEU:HD11	1.75	0.69
1:C:277:GLU:HA	1:C:283:PRO:HG3	1.74	0.69
1:C:111:LEU:HD23	1:C:111:LEU:C	2.13	0.69
1:D:344:LEU:HD12	1:D:345:GLY:N	2.07	0.69
1:A:87:ILE:HG21	1:A:316:ILE:HD12	1.74	0.69
1:C:239:SER:O	1:C:242:GLN:NE2	2.26	0.69
1:A:93:ASP:OD2	1:A:93:ASP:N	2.26	0.68
1:C:282:GLU:OE1	1:C:285:LEU:HD11	1.93	0.68
1:B:57:ILE:HG23	1:B:58:THR:HG23	1.75	0.68
1:B:251:GLU:HA	1:B:262:LYS:CB	2.24	0.68
1:A:205:LEU:O	1:A:209:MET:HG3	1.93	0.68
1:B:36:ASN:HB3	1:B:39:ILE:HD12	1.76	0.68
1:C:110:ARG:NH1	1:C:110:ARG:HB3	2.08	0.68
1:D:201:THR:HG21	1:D:241:ILE:HD11	1.74	0.68
1:C:172:LEU:O	1:C:175:SER:OG	2.09	0.68
1:D:227:ARG:HD3	1:D:319:ASN:HB2	1.74	0.68
1:C:113:VAL:HG13	1:C:114:ASN:H	1.59	0.68
1:C:129:LEU:O	1:C:132:LEU:HB2	1.93	0.67
1:D:208:ASN:ND2	1:D:238:TYR:HB3	2.09	0.67
1:B:259:LYS:NZ	1:B:261:LYS:HE3	2.09	0.67
1:A:18:TYR:C	1:A:18:TYR:HD1	1.96	0.67
1:C:201:THR:HA	1:C:204:ASN:ND2	2.09	0.67
1:D:92:ASN:HA	1:D:95:ILE:HG22	1.77	0.67
1:B:98:ILE:HD13	1:B:106:GLU:HB2	1.76	0.67
1:C:176:SER:HA	1:C:182:LEU:HD12	1.77	0.67
1:A:18:TYR:C	1:A:18:TYR:CD1	2.67	0.67
1:B:157:LEU:C	1:B:159:GLU:H	1.97	0.67
1:A:208:ASN:O	1:A:212:VAL:HG23	1.94	0.67
1:D:66:GLU:O	1:D:177:LEU:HG	1.95	0.67
1:D:43:ASN:HD22	1:D:44:PRO:CD	2.08	0.67
1:D:129:LEU:O	1:D:132:LEU:HB3	1.95	0.66
1:A:137:ILE:HG21	1:A:196:ILE:CD1	2.24	0.66
1:B:112:PRO:HB2	1:B:199:ASN:HD22	1.58	0.66
1:D:221:ASP:HA	1:D:224:LEU:HD12	1.77	0.66
1:D:216:ASN:O	1:D:219:ILE:HG22	1.96	0.66
1:A:95:ILE:O	1:A:95:ILE:HG13	1.95	0.66
1:C:134:SER:O	1:C:138:ILE:HB	1.95	0.66
1:C:202:THR:HA	2:C:410:HEM:CBB	2.26	0.66
1:D:249:ALA:HB3	1:D:264:ASP:H	1.60	0.66

Continued on next page...

Continued from previous page...

Atom-1	Atom-2	Interatomic distance (Å)	Clash overlap (Å)
1:B:75:PHE:HA	1:B:80:ILE:HD13	1.75	0.66
1:B:138:ILE:CG1	1:B:139:GLY:H	2.08	0.66
1:B:216:ASN:O	1:B:219:ILE:HG22	1.96	0.66
1:B:56:PHE:CD2	1:B:56:PHE:N	2.59	0.66
1:D:234:THR:O	1:D:237:TYR:N	2.29	0.66
1:D:17:HIS:ND1	1:D:18:TYR:N	2.42	0.66
1:A:99:ASP:C	1:A:101:LYS:H	1.99	0.66
1:A:156:ARG:O	1:A:160:ILE:HG12	1.96	0.66
1:B:12:LEU:HD13	1:B:25:TYR:O	1.96	0.65
1:A:30:VAL:HG13	1:A:268:VAL:CG1	2.26	0.65
1:D:98:ILE:CD1	1:D:107:TYR:HB2	2.25	0.65
1:B:17:HIS:O	1:B:18:TYR:HB3	1.96	0.65
1:C:138:ILE:HG22	1:C:140:ASN:H	1.61	0.65
1:D:270:LEU:O	1:D:274:ASN:ND2	2.30	0.65
1:B:21:ALA:HB1	1:B:267:ILE:HD13	1.77	0.65
1:A:158:LEU:HD22	1:C:81:ASN:ND2	2.10	0.65
1:D:198:GLY:N	2:D:410:HEM:HAC	2.12	0.65
1:C:22:TRP:CD1	1:C:260:ILE:HG23	2.31	0.65
1:C:251:GLU:HA	1:C:262:LYS:HB2	1.77	0.65
1:C:68:ARG:HE	1:C:305:LEU:HD13	1.62	0.65
1:B:144:GLU:HB3	1:D:35:MET:CE	2.27	0.65
1:C:326:LYS:O	1:C:327:ARG:CG	2.44	0.65
1:B:156:ARG:O	1:B:160:ILE:HG13	1.95	0.65
1:C:153:MET:HE3	1:C:157:LEU:HD22	1.77	0.65
1:B:299:ILE:HA	1:B:303:MET:SD	2.36	0.65
1:A:276:ASP:OD1	1:A:278:THR:HG22	1.97	0.65
1:B:53:GLY:HA3	1:B:58:THR:CG2	2.26	0.64
1:D:138:ILE:O	1:D:138:ILE:HG22	1.97	0.64
1:A:302:HIS:HA	2:A:410:HEM:O2D	1.97	0.64
1:C:252:ASP:HB3	1:C:259:LYS:NZ	2.11	0.64
1:B:95:ILE:O	1:B:98:ILE:HG22	1.97	0.64
1:C:157:LEU:O	1:C:161:PHE:HD1	1.81	0.64
1:D:178:LYS:O	1:D:178:LYS:HG2	1.96	0.64
1:D:276:ASP:OD1	1:D:278:THR:HB	1.98	0.64
1:A:42:SER:HA	1:A:247:ARG:CD	2.27	0.64
1:C:146:PHE:HA	1:C:149:VAL:HG23	1.78	0.64
1:A:89:GLU:O	1:A:93:ASP:OD2	2.15	0.64
1:C:329:LYS:NZ	1:C:329:LYS:HB2	2.12	0.64
1:B:138:ILE:CG1	1:B:139:GLY:N	2.60	0.64
1:A:38:LYS:H	1:A:38:LYS:HD2	1.62	0.64
1:A:118:LYS:C	1:A:118:LYS:HD3	2.18	0.64

Continued on next page...

Continued from previous page...

Atom-1	Atom-2	Interatomic distance (Å)	Clash overlap (Å)
1:B:183:THR:HG22	1:B:184:MET:N	2.13	0.64
1:A:183:THR:HG22	1:A:186:GLU:H	1.63	0.64
1:D:43:ASN:HD22	1:D:44:PRO:HD2	1.62	0.64
1:D:73:PRO:O	1:D:76:LEU:HG	1.98	0.64
1:A:299:ILE:HA	1:A:303:MET:HE3	1.79	0.63
1:B:299:ILE:HA	1:B:303:MET:CE	2.26	0.63
1:B:56:PHE:CE1	1:B:68:ARG:HA	2.32	0.63
1:A:98:ILE:HA	1:A:101:LYS:HD2	1.81	0.63
1:D:168:ILE:HA	1:D:171:VAL:CG2	2.29	0.63
1:A:67:PHE:CE2	1:A:182:LEU:HD11	2.33	0.63
1:C:116:ILE:CG2	1:C:199:ASN:HD21	2.10	0.63
1:C:192:MET:O	1:C:196:ILE:HD13	1.99	0.63
1:C:80:ILE:HD11	1:C:309:LEU:HD13	1.81	0.63
1:C:21:ALA:HB1	1:C:265:GLN:O	1.98	0.63
1:B:138:ILE:HG13	1:B:140:ASN:H	1.62	0.63
1:B:247:ARG:HB2	1:B:266:VAL:O	1.98	0.63
1:D:22:TRP:NE1	1:D:260:ILE:HG23	2.13	0.63
1:A:21:ALA:HB2	1:A:265:GLN:HB3	1.80	0.63
1:D:332:TYR:C	1:D:334:LYS:H	2.02	0.63
1:D:157:LEU:CD2	1:D:188:ILE:HG23	2.27	0.63
1:C:123:PRO:HB2	1:C:126:ASP:OD2	1.99	0.62
1:C:24:VAL:HG11	1:C:29:ASP:O	1.99	0.62
1:D:332:TYR:HD1	1:D:332:TYR:H	1.46	0.62
2:C:410:HEM:HMC1	2:C:410:HEM:HBC2	1.82	0.62
1:C:162:LYS:HZ2	1:C:162:LYS:HA	1.64	0.62
1:D:168:ILE:HA	1:D:171:VAL:HG23	1.81	0.62
1:B:156:ARG:NH1	1:B:159:GLU:HG2	2.14	0.62
1:A:23:HIS:CE1	1:A:267:ILE:HD12	2.34	0.62
1:D:161:PHE:CE2	1:D:169:ILE:HG23	2.34	0.62
1:C:200:GLU:O	1:C:203:THR:N	2.33	0.62
1:D:111:LEU:O	1:D:115:ILE:HG12	1.99	0.62
1:D:244:LEU:HD13	2:D:410:HEM:CGA	2.30	0.62
1:A:328:ILE:HG22	1:A:328:ILE:O	2.00	0.61
1:C:66:GLU:OE1	1:C:177:LEU:HG	2.00	0.61
1:A:68:ARG:O	1:A:72:ALA:HB2	1.99	0.61
1:D:92:ASN:O	1:D:95:ILE:HG22	2.00	0.61
1:C:118:LYS:O	1:C:118:LYS:HD2	2.01	0.61
1:D:156:ARG:HA	1:D:156:ARG:HE	1.66	0.61
1:B:61:ASN:HA	1:B:64:HIS:HB3	1.81	0.61
1:B:236:ARG:NH2	1:B:283:PRO:O	2.33	0.61
1:C:156:ARG:O	1:C:160:ILE:HG12	2.00	0.61

Continued on next page...

Continued from previous page...

Atom-1	Atom-2	Interatomic distance (Å)	Clash overlap (Å)
1:B:178:LYS:O	1:B:180:ARG:N	2.26	0.61
1:D:113:VAL:O	1:D:117:SER:CB	2.48	0.61
1:D:174:GLY:O	1:D:175:SER:HB3	2.01	0.61
1:B:244:LEU:HD13	2:B:410:HEM:HBA2	1.80	0.61
1:D:236:ARG:HB2	1:D:294:HIS:CB	2.31	0.61
1:B:92:ASN:HA	1:B:95:ILE:CG2	2.30	0.61
1:B:116:ILE:HG23	1:B:120:LEU:HD11	1.83	0.61
1:C:163:SER:O	1:C:164:ASP:HB3	2.00	0.61
1:A:330:ILE:HG22	1:A:330:ILE:O	1.99	0.61
1:B:280:PHE:O	1:B:283:PRO:HD3	2.01	0.61
1:C:71:SER:C	1:C:73:PRO:HD2	2.21	0.61
1:A:254:TYR:HA	1:A:258:LYS:O	2.01	0.61
1:C:167:GLY:O	1:C:171:VAL:HG23	2.01	0.60
1:A:138:ILE:HD12	1:A:138:ILE:H	1.65	0.60
1:A:56:PHE:HE1	2:A:410:HEM:HBD2	1.65	0.60
1:A:62:PRO:HG2	1:A:63:GLU:H	1.66	0.60
1:C:279:PHE:CE2	1:C:292:GLU:HB3	2.36	0.60
1:B:69:ASP:O	1:B:71:SER:N	2.33	0.60
1:D:156:ARG:O	1:D:160:ILE:HG12	2.02	0.60
1:A:127:MET:O	1:A:131:LYS:HG2	2.00	0.60
1:A:201:THR:HB	2:A:410:HEM:CAB	2.32	0.60
1:D:14:ASP:OD1	1:D:15:PRO:HD2	2.02	0.60
1:C:68:ARG:NH2	1:C:305:LEU:HA	2.17	0.60
1:B:123:PRO:O	1:B:125:SER:N	2.29	0.60
1:A:236:ARG:CB	1:A:236:ARG:HH11	2.12	0.60
1:C:41:SER:O	1:C:247:ARG:HD2	2.00	0.60
1:D:61:ASN:HB3	1:D:62:PRO:CD	2.31	0.60
1:C:202:THR:HA	2:C:410:HEM:HBB1	1.84	0.59
1:D:172:LEU:HD21	1:D:190:TYR:CG	2.36	0.59
1:B:130:PHE:CE1	1:B:195:ILE:HD11	2.37	0.59
1:C:226:ASN:HB3	1:C:288:ILE:HD13	1.83	0.59
1:C:111:LEU:HB3	1:C:112:PRO:CD	2.32	0.59
1:C:135:ASP:OD2	1:C:141:LYS:HD3	2.01	0.59
1:C:136:TYR:CE2	1:C:143:ASP:HB2	2.36	0.59
1:D:135:ASP:O	1:D:137:ILE:N	2.36	0.59
1:B:72:ALA:N	1:B:73:PRO:HD2	2.17	0.59
1:D:330:ILE:HG12	1:D:351:LEU:CD2	2.31	0.59
1:C:252:ASP:HB3	1:C:259:LYS:CE	2.32	0.59
1:D:201:THR:HA	1:D:204:ASN:ND2	2.17	0.59
1:B:180:ARG:NH2	1:B:182:LEU:HA	2.17	0.59
1:C:135:ASP:OD2	1:C:141:LYS:HB2	2.03	0.59

Continued on next page...

Continued from previous page...

Atom-1	Atom-2	Interatomic distance (Å)	Clash overlap (Å)
1:C:148:TYR:HD2	1:C:151:ASN:CB	2.15	0.59
1:D:227:ARG:CD	1:D:319:ASN:HB2	2.31	0.59
1:D:95:ILE:O	1:D:96:LYS:C	2.40	0.59
1:D:99:ASP:O	1:D:100:ASN:HB2	2.02	0.59
1:B:183:THR:O	1:B:187:LYS:HG3	2.01	0.59
1:D:172:LEU:HD11	1:D:190:TYR:CE2	2.37	0.59
1:B:153:MET:HG3	1:B:157:LEU:HD12	1.84	0.59
1:A:205:LEU:HD22	1:A:235:LEU:HD21	1.85	0.59
1:D:12:LEU:HD13	1:D:25:TYR:O	2.02	0.59
1:A:116:ILE:HD12	1:A:120:LEU:HD11	1.83	0.59
1:B:102:ASP:O	1:B:106:GLU:HG2	2.03	0.59
1:B:72:ALA:HA	1:B:305:LEU:HD11	1.84	0.59
1:A:249:ALA:O	1:A:263:GLY:N	2.36	0.58
1:A:22:TRP:CH2	1:A:258:LYS:HD2	2.38	0.58
1:D:43:ASN:HD22	1:D:44:PRO:N	2.01	0.58
1:B:227:ARG:O	1:B:231:VAL:HG23	2.04	0.58
1:B:156:ARG:HH11	1:B:159:GLU:HG2	1.68	0.58
1:B:30:VAL:HG21	1:B:273:ALA:HB2	1.86	0.58
1:C:126:ASP:C	1:C:129:LEU:HD23	2.23	0.58
1:D:332:TYR:C	1:D:334:LYS:N	2.55	0.58
1:C:256:ASN:O	1:C:257:ASN:HB2	2.03	0.58
1:B:180:ARG:HG2	1:B:181:LYS:H	1.67	0.58
1:B:66:GLU:OE1	1:B:178:LYS:CB	2.51	0.58
1:A:88:GLU:HG3	1:A:316:ILE:HG23	1.86	0.58
1:B:61:ASN:O	1:B:62:PRO:C	2.40	0.58
1:C:84:LYS:O	1:C:88:GLU:HG3	2.03	0.58
1:B:163:SER:OG	1:B:164:ASP:N	2.37	0.58
1:C:57:ILE:HG13	2:C:410:HEM:HBD1	1.85	0.58
1:A:227:ARG:HD2	1:A:319:ASN:HD22	1.69	0.58
1:C:270:LEU:HD22	1:C:295:LEU:O	2.03	0.58
1:C:184:MET:O	1:C:187:LYS:HB2	2.04	0.58
1:C:116:ILE:CD1	1:C:120:LEU:HG	2.33	0.58
1:C:325:PHE:HB2	1:C:328:ILE:HG13	1.84	0.58
1:A:247:ARG:HH11	1:A:247:ARG:HG2	1.69	0.58
1:C:347:ASP:OD2	1:C:348:LYS:HG2	2.03	0.58
1:B:84:LYS:HE2	1:B:88:GLU:OE2	2.03	0.58
1:D:332:TYR:N	1:D:332:TYR:CD1	2.72	0.58
1:D:340:ASN:OD1	1:D:342:MET:N	2.36	0.58
1:D:24:VAL:CG1	1:D:29:ASP:HB3	2.34	0.58
1:B:212:VAL:HG11	1:B:286:PHE:CE1	2.39	0.57
1:B:236:ARG:HG2	1:B:274:ASN:HB3	1.86	0.57

Continued on next page...

Continued from previous page...

Atom-1	Atom-2	Interatomic distance (Å)	Clash overlap (Å)
1:C:113:VAL:HG13	1:C:114:ASN:N	2.19	0.57
1:B:208:ASN:O	1:B:212:VAL:HG23	2.04	0.57
1:C:259:LYS:O	1:C:259:LYS:HG3	2.04	0.57
1:C:136:TYR:CE2	1:C:146:PHE:HB3	2.40	0.57
1:C:209:MET:HE1	1:C:314:ALA:O	2.04	0.57
1:A:330:ILE:CD1	1:A:349:LEU:HD11	2.31	0.57
1:C:224:LEU:O	1:C:226:ASN:N	2.37	0.57
1:D:72:ALA:HA	1:D:305:LEU:HD11	1.86	0.57
1:C:247:ARG:HG2	1:C:247:ARG:HH11	1.68	0.57
1:D:280:PHE:O	1:D:283:PRO:HD3	2.04	0.57
1:A:81:ASN:C	1:A:83:TYR:H	2.06	0.57
1:B:324:HIS:O	1:B:324:HIS:ND1	2.37	0.57
1:C:124:ASP:O	1:C:127:MET:HG2	2.03	0.57
1:A:111:LEU:HB3	1:A:112:PRO:CD	2.34	0.57
1:C:66:GLU:O	1:C:70:ILE:HG13	2.03	0.57
1:A:227:ARG:CD	1:A:319:ASN:HD22	2.18	0.57
1:C:307:ALA:HB3	1:C:308:PRO:HD3	1.87	0.57
1:B:178:LYS:C	1:B:180:ARG:H	2.06	0.57
1:D:132:LEU:HG	1:D:149:VAL:HG11	1.87	0.57
1:C:66:GLU:OE2	1:C:178:LYS:HD2	2.05	0.57
1:D:234:THR:HA	1:D:286:PHE:HE1	1.69	0.57
1:C:80:ILE:CG2	1:C:81:ASN:N	2.67	0.57
1:B:127:MET:HG3	1:B:131:LYS:HG3	1.86	0.57
1:B:188:ILE:O	1:B:192:MET:HG3	2.04	0.57
1:D:183:THR:CB	1:D:186:GLU:HG3	2.34	0.57
1:A:55:SER:HB3	1:A:193:LEU:CD2	2.35	0.57
1:B:265:GLN:HE21	1:B:267:ILE:HD11	1.69	0.57
1:A:216:ASN:O	1:A:219:ILE:HG22	2.05	0.56
1:D:294:HIS:CE1	1:D:296:ALA:HB3	2.40	0.56
1:A:79:LYS:O	1:A:82:ASP:HB2	2.04	0.56
1:C:61:ASN:CB	1:C:62:PRO:CD	2.74	0.56
1:B:157:LEU:C	1:B:159:GLU:N	2.57	0.56
1:C:280:PHE:O	1:C:283:PRO:HD3	2.04	0.56
1:A:21:ALA:CB	1:A:265:GLN:HB3	2.34	0.56
1:C:154:VAL:HG13	1:C:188:ILE:HG21	1.86	0.56
1:D:44:PRO:O	1:D:46:ASN:N	2.38	0.56
1:C:65:LYS:O	1:C:69:ASP:HB2	2.06	0.56
1:B:307:ALA:O	1:B:311:ARG:HG3	2.04	0.56
1:C:176:SER:O	1:C:177:LEU:HB2	2.05	0.56
1:D:227:ARG:HG2	1:D:318:LEU:CD2	2.35	0.56
1:C:236:ARG:CG	1:C:274:ASN:HB3	2.35	0.56

Continued on next page...

Continued from previous page...

Atom-1	Atom-2	Interatomic distance (Å)	Clash overlap (Å)
1:A:157:LEU:HD23	1:A:188:ILE:HG23	1.87	0.56
1:B:56:PHE:HE1	1:B:68:ARG:HA	1.70	0.56
1:A:130:PHE:HD2	1:A:195:ILE:HD13	1.71	0.56
1:C:245:PRO:HG2	1:C:246:HIS:H	1.71	0.56
1:B:154:VAL:O	1:B:158:LEU:HG	2.06	0.56
1:A:99:ASP:O	1:A:101:LYS:N	2.38	0.56
1:A:20:GLY:O	1:A:21:ALA:HB2	2.05	0.56
1:B:331:ASP:OD2	1:B:334:LYS:HE3	2.05	0.56
1:A:87:ILE:HG12	1:A:115:ILE:HD12	1.87	0.56
1:D:95:ILE:O	1:D:96:LYS:O	2.24	0.56
1:A:327:ARG:O	1:A:328:ILE:HG13	2.05	0.56
1:D:125:SER:O	1:D:128:PRO:HD2	2.05	0.56
1:D:57:ILE:CG2	1:D:193:LEU:HD11	2.35	0.56
1:D:17:HIS:HB2	1:D:22:TRP:CE3	2.41	0.56
1:C:141:LYS:O	1:C:142:ARG:HG3	2.06	0.56
1:D:302:HIS:HA	2:D:410:HEM:O2D	2.06	0.56
1:C:245:PRO:HG2	1:C:246:HIS:ND1	2.21	0.56
1:D:247:ARG:HG2	1:D:247:ARG:HH11	1.71	0.56
1:A:12:LEU:HD13	1:A:25:TYR:O	2.06	0.56
1:D:113:VAL:O	1:D:117:SER:HB3	2.06	0.56
1:B:285:LEU:O	1:B:290:ARG:NH2	2.39	0.56
1:A:299:ILE:HA	1:A:303:MET:CE	2.36	0.56
1:D:118:LYS:O	1:D:118:LYS:HD3	2.05	0.56
1:C:298:GLY:O	1:C:299:ILE:HB	2.06	0.56
1:A:183:THR:O	1:A:187:LYS:HG3	2.06	0.55
1:B:205:LEU:HA	1:B:208:ASN:HD22	1.70	0.55
1:A:98:ILE:HD13	1:A:107:TYR:HB2	1.88	0.55
1:C:250:ALA:O	1:C:262:LYS:HE3	2.06	0.55
1:D:37:ASP:OD2	1:D:61:ASN:ND2	2.39	0.55
1:A:110:ARG:O	1:A:113:VAL:HG12	2.06	0.55
1:C:201:THR:C	2:C:410:HEM:HBB2	2.26	0.55
1:A:164:ASP:OD1	1:A:165:SER:N	2.39	0.55
1:B:244:LEU:HD11	1:B:270:LEU:HD11	1.86	0.55
1:A:40:PHE:CD2	1:A:266:VAL:HG21	2.42	0.55
1:C:329:LYS:HZ2	1:C:329:LYS:HB2	1.71	0.55
1:A:165:SER:OG	1:A:166:HIS:N	2.40	0.55
1:B:84:LYS:C	1:B:84:LYS:HD3	2.27	0.55
1:C:130:PHE:HE2	1:C:153:MET:CE	2.19	0.55
1:B:139:GLY:O	1:B:142:ARG:NH2	2.40	0.55
1:D:43:ASN:ND2	1:D:44:PRO:N	2.53	0.55
1:B:267:ILE:HD12	1:B:267:ILE:N	2.21	0.55

Continued on next page...

Continued from previous page...

Atom-1	Atom-2	Interatomic distance (Å)	Clash overlap (Å)
1:A:232:GLU:HA	1:A:232:GLU:OE1	2.06	0.55
1:D:172:LEU:O	1:D:174:GLY:N	2.39	0.55
1:A:347:ASP:OD2	1:A:348:LYS:HG2	2.06	0.55
1:C:220:ILE:O	1:C:223:ALA:HB3	2.06	0.55
1:B:18:TYR:C	1:B:20:GLY:N	2.60	0.55
1:B:143:ASP:OD2	1:B:145:ASN:OD1	2.25	0.55
1:B:96:LYS:O	1:B:99:ASP:OD1	2.23	0.55
1:C:133:TRP:HH2	1:C:192:MET:HB3	1.72	0.55
1:C:248:PHE:N	1:C:248:PHE:CD1	2.74	0.55
1:B:34:LEU:HD13	1:B:299:ILE:HG22	1.88	0.55
1:B:92:ASN:C	1:B:95:ILE:HG22	2.28	0.55
1:C:47:ARG:HG3	1:C:49:SER:OG	2.06	0.55
1:D:132:LEU:O	1:D:134:SER:N	2.39	0.55
1:B:259:LYS:NZ	1:B:261:LYS:HG3	2.20	0.55
1:A:130:PHE:CD2	1:A:195:ILE:HD13	2.42	0.55
1:C:172:LEU:HD12	1:C:191:ILE:HD11	1.88	0.55
1:D:61:ASN:HB3	1:D:62:PRO:HD3	1.89	0.55
1:D:144:GLU:H	1:D:144:GLU:CD	2.10	0.55
1:C:32:HIS:HD2	1:C:36:ASN:ND2	2.04	0.55
1:B:42:SER:CB	1:B:302:HIS:NE2	2.69	0.54
1:B:129:LEU:O	1:B:130:PHE:C	2.45	0.54
1:C:183:THR:CB	1:C:186:GLU:HG3	2.36	0.54
1:B:111:LEU:O	1:B:115:ILE:HG12	2.06	0.54
1:B:66:GLU:OE2	1:B:178:LYS:HD2	2.08	0.54
1:B:119:ILE:HG23	1:B:120:LEU:HD23	1.89	0.54
1:C:62:PRO:HG2	1:C:63:GLU:H	1.72	0.54
1:D:136:TYR:C	1:D:138:ILE:N	2.57	0.54
1:A:54:ILE:O	1:A:57:ILE:HG22	2.08	0.54
1:D:208:ASN:O	1:D:212:VAL:HG23	2.06	0.54
1:B:116:ILE:O	1:B:119:ILE:HG22	2.08	0.54
1:A:316:ILE:HG22	1:A:320:ASP:OD2	2.08	0.54
1:C:233:GLU:OE1	1:C:236:ARG:HD3	2.06	0.54
1:B:92:ASN:HA	1:B:95:ILE:HG22	1.89	0.54
1:A:69:ASP:O	1:A:72:ALA:HB3	2.08	0.54
1:C:94:LEU:HD21	1:C:110:ARG:HB2	1.90	0.54
1:B:245:PRO:HA	1:B:267:ILE:HG13	1.90	0.54
1:B:133:TRP:C	1:B:137:ILE:HG12	2.28	0.54
1:A:200:GLU:O	1:A:202:THR:N	2.37	0.54
1:D:98:ILE:O	1:D:101:LYS:HB2	2.07	0.54
1:C:56:PHE:HA	1:C:59:MET:HG3	1.86	0.54
1:B:233:GLU:OE1	1:B:287:LYS:O	2.26	0.54

Continued on next page...

Continued from previous page...

Atom-1	Atom-2	Interatomic distance (Å)	Clash overlap (Å)
1:C:205:LEU:O	1:C:208:ASN:HB2	2.08	0.54
1:B:134:SER:HA	1:B:137:ILE:CG1	2.38	0.54
1:A:312:LEU:HD22	1:A:316:ILE:HG13	1.90	0.54
1:A:98:ILE:HG23	1:A:98:ILE:O	2.08	0.54
1:D:312:LEU:O	1:D:316:ILE:HG13	2.07	0.53
1:C:232:GLU:HA	1:C:235:LEU:HD12	1.89	0.53
1:D:43:ASN:HB2	1:D:58:THR:O	2.08	0.53
1:B:36:ASN:CB	1:B:39:ILE:HD12	2.38	0.53
1:C:136:TYR:CE1	1:C:141:LYS:HE2	2.42	0.53
1:D:115:ILE:O	1:D:119:ILE:HG13	2.08	0.53
1:B:116:ILE:HD11	2:B:410:HEM:HBC1	1.90	0.53
1:B:127:MET:HG3	1:B:131:LYS:HD2	1.91	0.53
1:B:98:ILE:HD12	1:B:101:LYS:HB2	1.90	0.53
1:C:14:ASP:HB3	1:C:15:PRO:CD	2.33	0.53
1:B:317:ALA:O	1:B:321:ILE:HG13	2.08	0.53
1:C:218:ASP:O	1:C:219:ILE:HB	2.08	0.53
1:B:42:SER:O	1:B:58:THR:HA	2.08	0.53
1:B:70:ILE:O	1:B:70:ILE:HG22	2.07	0.53
1:A:298:GLY:O	1:A:303:MET:HE2	2.09	0.53
1:C:204:ASN:C	1:C:208:ASN:HD22	2.12	0.53
1:C:335:SER:OG	1:C:349:LEU:HA	2.09	0.53
1:B:117:SER:HB3	1:B:130:PHE:CD2	2.43	0.53
1:A:18:TYR:C	1:A:20:GLY:H	2.12	0.53
1:B:43:ASN:O	1:B:248:PHE:HD1	1.91	0.53
1:D:120:LEU:O	1:D:169:ILE:HG13	2.07	0.53
1:D:129:LEU:HD11	1:D:152:ARG:HG3	1.90	0.53
1:C:176:SER:HB3	1:C:181:LYS:HA	1.90	0.53
1:D:208:ASN:HD21	1:D:344:LEU:HG	1.73	0.53
1:A:56:PHE:HE2	1:A:190:TYR:CZ	2.27	0.53
1:C:77:PRO:HA	1:C:80:ILE:HG22	1.89	0.53
1:D:73:PRO:HA	1:D:76:LEU:HG	1.89	0.53
1:D:251:GLU:HA	1:D:262:LYS:HG3	1.91	0.53
1:D:184:MET:HA	1:D:187:LYS:HD2	1.89	0.53
1:B:100:ASN:HD22	1:B:100:ASN:N	2.06	0.53
1:B:330:ILE:HD13	1:B:349:LEU:HD21	1.91	0.53
1:A:216:ASN:N	1:A:217:PRO:HD3	2.24	0.53
1:C:99:ASP:OD2	1:C:324:HIS:NE2	2.41	0.53
1:B:158:LEU:HD22	1:B:184:MET:CG	2.39	0.53
1:C:182:LEU:HD12	1:C:182:LEU:H	1.74	0.53
1:D:59:MET:SD	1:D:63:GLU:HG2	2.49	0.53
1:B:153:MET:HE3	1:B:156:ARG:HB3	1.90	0.53

Continued on next page...

Continued from previous page...

Atom-1	Atom-2	Interatomic distance (Å)	Clash overlap (Å)
1:A:161:PHE:CZ	1:A:191:ILE:HD12	2.44	0.53
1:A:99:ASP:C	1:A:101:LYS:N	2.62	0.53
1:A:261:LYS:HD2	1:A:264:ASP:OD1	2.09	0.53
1:D:157:LEU:HG	1:D:188:ILE:HD13	1.91	0.53
1:C:224:LEU:C	1:C:226:ASN:H	2.12	0.53
1:B:307:ALA:HB3	1:B:308:PRO:HD3	1.89	0.53
1:B:119:ILE:C	1:B:120:LEU:HD23	2.29	0.53
1:B:134:SER:HA	1:B:137:ILE:HG12	1.91	0.53
1:A:134:SER:O	1:A:138:ILE:HD12	2.08	0.53
1:A:18:TYR:CE1	1:A:23:HIS:NE2	2.77	0.53
1:D:64:HIS:HE1	2:D:410:HEM:O2D	1.91	0.52
1:D:132:LEU:C	1:D:134:SER:N	2.62	0.52
1:A:169:ILE:HG23	1:A:191:ILE:CD1	2.39	0.52
1:D:282:GLU:O	1:D:284:ASP:N	2.42	0.52
1:C:210:ILE:HD11	1:C:321:ILE:HD13	1.91	0.52
1:C:160:ILE:HG22	1:C:169:ILE:HG21	1.91	0.52
1:C:72:ALA:N	1:C:73:PRO:CD	2.71	0.52
1:D:177:LEU:N	1:D:177:LEU:CD2	2.72	0.52
1:B:156:ARG:NH1	1:D:226:ASN:ND2	2.57	0.52
1:A:276:ASP:OD1	1:A:278:THR:N	2.42	0.52
1:A:53:GLY:HA3	3:A:411:PIM:H10	1.91	0.52
1:D:42:SER:O	1:D:58:THR:HA	2.08	0.52
1:B:107:TYR:CE2	1:B:111:LEU:HD22	2.45	0.52
1:B:248:PHE:CE2	1:B:265:GLN:HG3	2.44	0.52
1:B:158:LEU:HD22	1:B:184:MET:HG3	1.91	0.52
1:A:163:SER:OG	1:A:164:ASP:N	2.42	0.52
1:B:127:MET:O	1:B:128:PRO:C	2.48	0.52
1:B:184:MET:O	1:B:188:ILE:HG12	2.09	0.52
1:D:130:PHE:O	1:D:134:SER:N	2.42	0.52
1:A:116:ILE:HD12	1:A:120:LEU:CD1	2.40	0.52
1:B:161:PHE:HE2	1:B:169:ILE:HG23	1.71	0.52
1:C:268:VAL:CG2	1:C:268:VAL:O	2.58	0.52
1:B:183:THR:HG22	1:B:185:ASP:N	2.03	0.52
1:B:34:LEU:CD1	1:B:299:ILE:HG22	2.40	0.52
1:D:265:GLN:NE2	1:D:267:ILE:HG13	2.22	0.52
1:C:68:ARG:NE	1:C:305:LEU:HD13	2.24	0.52
1:B:276:ASP:OD1	1:B:278:THR:HB	2.10	0.52
1:D:262:LYS:HG2	1:D:263:GLY:N	2.24	0.52
1:C:133:TRP:O	1:C:137:ILE:HG12	2.10	0.52
1:B:18:TYR:C	1:B:20:GLY:H	2.12	0.52
1:A:230:PHE:HD1	1:A:288:ILE:HD11	1.74	0.52

Continued on next page...

Continued from previous page...

Atom-1	Atom-2	Interatomic distance (Å)	Clash overlap (Å)
1:D:137:ILE:C	1:D:139:GLY:H	2.13	0.52
1:D:302:HIS:O	2:D:410:HEM:HAA2	2.10	0.52
1:A:227:ARG:O	1:A:231:VAL:HG23	2.09	0.52
1:D:236:ARG:HB2	1:D:294:HIS:HB3	1.90	0.52
1:C:172:LEU:HD11	1:C:190:TYR:CD2	2.44	0.52
1:A:38:LYS:HD2	1:A:38:LYS:N	2.25	0.52
1:C:117:SER:HB2	1:C:127:MET:CE	2.40	0.51
1:A:227:ARG:HH11	1:A:227:ARG:HB3	1.75	0.51
1:A:280:PHE:HB3	1:A:290:ARG:NH1	2.25	0.51
1:D:201:THR:HA	1:D:204:ASN:HD22	1.74	0.51
1:B:243:PHE:C	1:B:243:PHE:CD1	2.83	0.51
1:A:270:LEU:O	1:A:271:GLY:C	2.48	0.51
1:B:129:LEU:O	1:B:133:TRP:N	2.41	0.51
1:B:183:THR:CG2	1:B:184:MET:N	2.72	0.51
1:C:146:PHE:HA	1:C:149:VAL:CG2	2.40	0.51
1:D:205:LEU:O	1:D:208:ASN:N	2.43	0.51
1:B:116:ILE:CA	1:B:119:ILE:HG22	2.39	0.51
1:A:108:ALA:O	1:A:112:PRO:HD2	2.11	0.51
1:B:12:LEU:HD12	1:B:26:LYS:HA	1.93	0.51
1:A:118:LYS:O	1:A:118:LYS:HD3	2.11	0.51
1:D:111:LEU:HB3	1:D:112:PRO:CD	2.40	0.51
1:D:135:ASP:O	1:D:138:ILE:HG13	2.10	0.51
1:B:77:PRO:O	1:B:80:ILE:HG22	2.11	0.51
1:C:49:SER:C	1:C:246:HIS:HE2	2.13	0.51
1:B:151:ASN:HD22	1:B:151:ASN:N	2.07	0.51
1:D:206:ILE:HA	1:D:209:MET:HE3	1.93	0.51
1:B:78:SER:C	1:B:80:ILE:H	2.14	0.51
1:B:340:ASN:ND2	1:B:340:ASN:C	2.61	0.51
1:B:250:ALA:O	1:B:251:GLU:HB3	2.11	0.51
1:D:92:ASN:HA	1:D:95:ILE:CG2	2.41	0.51
1:D:57:ILE:HA	2:D:410:HEM:O1D	2.10	0.51
1:A:61:ASN:HB3	1:A:62:PRO:CD	2.39	0.51
1:C:133:TRP:CE2	1:C:137:ILE:HG13	2.46	0.51
1:B:65:LYS:O	1:B:69:ASP:CG	2.49	0.51
1:A:215:GLU:C	1:A:217:PRO:HD3	2.32	0.51
1:A:317:ALA:O	1:A:318:LEU:C	2.49	0.51
1:D:113:VAL:HG21	1:D:131:LYS:HG3	1.93	0.51
1:B:129:LEU:O	1:B:132:LEU:N	2.43	0.51
1:B:285:LEU:HD12	1:B:287:LYS:HE2	1.93	0.51
1:B:87:ILE:CB	1:B:316:ILE:HD12	2.38	0.51
1:C:250:ALA:O	1:C:251:GLU:HB3	2.10	0.51

Continued on next page...

Continued from previous page...

Atom-1	Atom-2	Interatomic distance (Å)	Clash overlap (Å)
1:D:307:ALA:HB3	1:D:308:PRO:HD3	1.93	0.51
1:B:326:LYS:O	1:B:327:ARG:O	2.28	0.51
1:C:128:PRO:CA	1:C:131:LYS:HE2	2.37	0.51
1:D:146:PHE:O	1:D:149:VAL:HG23	2.11	0.51
1:C:85:ASP:N	1:C:85:ASP:OD1	2.42	0.51
1:A:243:PHE:CB	1:A:269:TYR:HA	2.42	0.51
1:B:244:LEU:CD1	2:B:410:HEM:HBA2	2.41	0.50
1:B:249:ALA:C	1:B:251:GLU:N	2.64	0.50
1:B:214:ASP:HB2	1:B:330:ILE:HG13	1.93	0.50
1:B:282:GLU:OE1	1:B:287:LYS:HE3	2.12	0.50
1:D:135:ASP:O	1:D:138:ILE:N	2.34	0.50
1:B:126:ASP:C	1:B:128:PRO:HD2	2.32	0.50
1:B:133:TRP:CD2	1:B:153:MET:HG2	2.47	0.50
1:C:173:ALA:O	1:C:175:SER:N	2.43	0.50
1:B:21:ALA:HB1	1:B:267:ILE:CD1	2.41	0.50
1:C:247:ARG:CG	1:C:247:ARG:HH11	2.23	0.50
1:D:330:ILE:HG12	1:D:351:LEU:HD23	1.93	0.50
1:D:249:ALA:HB3	1:D:263:GLY:N	2.26	0.50
1:D:95:ILE:HG23	1:D:96:LYS:N	2.26	0.50
1:C:168:ILE:HA	1:C:171:VAL:CG2	2.41	0.50
1:D:195:ILE:HG22	1:D:196:ILE:N	2.25	0.50
1:B:100:ASN:ND2	1:B:100:ASN:N	2.57	0.50
1:B:232:GLU:O	1:B:235:LEU:HB2	2.10	0.50
1:D:277:GLU:HG2	1:D:283:PRO:HG3	1.94	0.50
1:A:130:PHE:O	1:A:133:TRP:HB3	2.12	0.50
1:D:322:LEU:CD2	1:D:328:ILE:HD12	2.41	0.50
1:B:36:ASN:HB3	1:B:39:ILE:CD1	2.41	0.50
1:D:57:ILE:HG21	1:D:193:LEU:HD11	1.92	0.50
1:D:164:ASP:O	1:D:165:SER:CB	2.56	0.50
1:C:32:HIS:HD2	1:C:36:ASN:HD22	1.59	0.50
1:B:209:MET:HG2	1:B:234:THR:HG21	1.94	0.50
1:B:251:GLU:HA	1:B:262:LYS:HD3	1.91	0.50
1:C:244:LEU:HB2	1:C:268:VAL:HG22	1.94	0.50
1:C:213:ILE:HG21	1:C:328:ILE:HB	1.94	0.50
1:A:62:PRO:HG2	1:A:63:GLU:N	2.27	0.50
1:B:340:ASN:HD22	1:B:341:LYS:N	2.08	0.50
1:B:153:MET:CE	1:B:157:LEU:HG	2.41	0.50
1:A:120:LEU:HD23	1:A:168:ILE:HB	1.93	0.50
1:D:322:LEU:HD23	1:D:328:ILE:CD1	2.42	0.50
1:B:177:LEU:O	1:B:178:LYS:HB3	2.12	0.50
1:C:134:SER:O	1:C:138:ILE:N	2.43	0.50

Continued on next page...

Continued from previous page...

Atom-1	Atom-2	Interatomic distance (Å)	Clash overlap (Å)
1:B:130:PHE:O	1:B:131:LYS:C	2.50	0.50
1:A:42:SER:HA	1:A:247:ARG:HD3	1.92	0.50
1:D:317:ALA:O	1:D:321:ILE:HG13	2.11	0.50
1:D:151:ASN:O	1:D:154:VAL:N	2.45	0.49
1:B:349:LEU:HD23	1:B:350:PHE:H	1.75	0.49
1:A:111:LEU:O	1:A:115:ILE:HG12	2.12	0.49
1:A:112:PRO:HB2	1:A:198:GLY:O	2.12	0.49
1:D:332:TYR:O	1:D:334:LYS:N	2.45	0.49
1:A:261:LYS:O	1:A:264:ASP:HB2	2.12	0.49
1:B:249:ALA:C	1:B:251:GLU:H	2.15	0.49
1:A:53:GLY:O	1:A:58:THR:HG23	2.13	0.49
1:C:166:HIS:CG	1:C:166:HIS:O	2.64	0.49
1:A:274:ASN:ND2	1:A:294:HIS:CB	2.58	0.49
1:D:203:THR:HG22	1:D:204:ASN:N	2.27	0.49
1:B:132:LEU:HD12	1:B:141:LYS:HE3	1.95	0.49
1:D:133:TRP:HZ3	1:D:195:ILE:HG21	1.77	0.49
1:C:330:ILE:CG2	1:C:331:ASP:H	2.01	0.49
1:D:233:GLU:OE2	1:D:236:ARG:NH1	2.45	0.49
1:C:163:SER:OG	1:C:164:ASP:N	2.42	0.49
1:B:70:ILE:HG23	1:B:175:SER:HB2	1.94	0.49
1:C:41:SER:OG	1:C:60:ASP:OD2	2.30	0.49
1:B:129:LEU:H	1:B:129:LEU:CD1	2.23	0.49
1:C:110:ARG:HH11	1:C:110:ARG:HB3	1.75	0.49
1:B:20:GLY:O	1:B:21:ALA:HB2	2.13	0.49
1:D:198:GLY:H	2:D:410:HEM:HAC	1.75	0.49
1:D:325:PHE:CD1	1:D:351:LEU:HD12	2.46	0.49
1:B:71:SER:O	1:B:72:ALA:C	2.50	0.49
1:C:218:ASP:N	1:C:218:ASP:OD2	2.43	0.49
1:B:116:ILE:HD13	1:B:119:ILE:CG2	2.43	0.49
1:A:312:LEU:HD22	1:A:316:ILE:CG1	2.42	0.49
1:A:176:SER:CB	1:A:182:LEU:H	2.26	0.49
1:D:22:TRP:CD1	1:D:260:ILE:HG23	2.46	0.49
1:C:339:ASP:O	1:C:340:ASN:C	2.50	0.49
1:B:90:THR:O	1:B:94:LEU:HD13	2.12	0.49
1:A:236:ARG:CB	1:A:274:ASN:HD22	2.26	0.49
1:D:138:ILE:O	1:D:138:ILE:CG2	2.60	0.49
1:A:169:ILE:HA	1:A:191:ILE:HD11	1.95	0.49
1:A:176:SER:HA	1:A:182:LEU:HB2	1.95	0.49
1:B:158:LEU:CD2	1:B:188:ILE:HD11	2.43	0.49
1:C:134:SER:O	1:C:135:ASP:C	2.50	0.49
1:B:178:LYS:HG2	1:B:178:LYS:O	2.13	0.48

Continued on next page...

Continued from previous page...

Atom-1	Atom-2	Interatomic distance (Å)	Clash overlap (Å)
1:C:148:TYR:HA	1:C:151:ASN:HB2	1.93	0.48
1:D:116:ILE:CG1	1:D:198:GLY:HA3	2.42	0.48
1:B:133:TRP:CE3	1:B:153:MET:HG2	2.48	0.48
1:C:27:TYR:HD1	1:C:273:ALA:O	1.96	0.48
1:D:135:ASP:OD1	1:D:136:TYR:N	2.45	0.48
1:A:27:TYR:HE2	1:A:31:LYS:HD2	1.73	0.48
1:D:69:ASP:O	1:D:71:SER:N	2.46	0.48
1:A:230:PHE:CD1	1:A:288:ILE:HD11	2.48	0.48
1:A:103:ILE:O	1:A:107:TYR:HB3	2.11	0.48
1:A:85:ASP:O	1:A:86:PHE:C	2.52	0.48
1:C:111:LEU:CD2	1:C:111:LEU:C	2.82	0.48
1:C:157:LEU:HG	1:C:161:PHE:HE1	1.78	0.48
1:B:164:ASP:O	1:B:165:SER:HB3	2.13	0.48
1:D:335:SER:O	1:D:336:ARG:HD3	2.13	0.48
1:C:176:SER:O	1:C:177:LEU:CB	2.60	0.48
1:A:172:LEU:O	1:A:173:ALA:O	2.30	0.48
1:A:111:LEU:HB3	1:A:112:PRO:HD3	1.95	0.48
1:D:17:HIS:ND1	1:D:17:HIS:C	2.67	0.48
1:D:270:LEU:HD22	1:D:295:LEU:O	2.14	0.48
1:C:274:ASN:OD1	1:C:294:HIS:HB2	2.14	0.48
1:C:163:SER:O	1:C:164:ASP:CB	2.61	0.48
1:D:208:ASN:HD22	1:D:238:TYR:CB	2.15	0.48
1:A:330:ILE:O	1:A:332:TYR:CD1	2.67	0.48
1:C:325:PHE:CB	1:C:328:ILE:HG13	2.44	0.48
1:B:337:LEU:HD23	1:B:346:TYR:CD2	2.48	0.48
2:D:410:HEM:NB	3:D:411:PIM:H2	2.28	0.48
1:C:224:LEU:C	1:C:226:ASN:N	2.66	0.48
1:A:23:HIS:ND1	1:A:269:TYR:HE1	2.12	0.48
1:B:219:ILE:O	1:B:220:ILE:C	2.51	0.48
1:D:135:ASP:O	1:D:137:ILE:HG13	2.14	0.48
1:B:233:GLU:OE2	1:B:236:ARG:NH1	2.47	0.48
1:D:14:ASP:O	1:D:16:VAL:HG13	2.14	0.48
1:C:128:PRO:HA	1:C:131:LYS:CE	2.39	0.48
1:A:134:SER:O	1:A:137:ILE:N	2.47	0.48
1:B:44:PRO:HA	1:B:248:PHE:CD1	2.49	0.48
1:A:287:LYS:HE2	1:A:290:ARG:HG2	1.96	0.48
1:C:57:ILE:HG13	2:C:410:HEM:CBD	2.44	0.48
1:B:136:TYR:O	1:B:137:ILE:C	2.52	0.48
1:B:156:ARG:CZ	1:D:226:ASN:CG	2.82	0.48
1:B:282:GLU:HB3	1:B:285:LEU:HD12	1.96	0.48
1:B:87:ILE:CG2	1:B:316:ILE:HD12	2.43	0.48

Continued on next page...

Continued from previous page...

Atom-1	Atom-2	Interatomic distance (Å)	Clash overlap (Å)
1:C:307:ALA:HB1	1:C:311:ARG:NH1	2.28	0.48
1:C:252:ASP:HB3	1:C:259:LYS:HE2	1.94	0.48
1:C:136:TYR:OH	1:C:143:ASP:HB2	2.14	0.48
1:C:335:SER:OG	1:C:350:PHE:N	2.42	0.48
1:B:144:GLU:HB3	1:D:35:MET:HE1	1.96	0.48
1:B:194:LEU:O	2:B:410:HEM:HBC2	2.13	0.47
1:C:103:ILE:HD11	1:C:351:LEU:HD21	1.96	0.47
1:C:177:LEU:CD1	1:C:178:LYS:N	2.72	0.47
1:D:226:ASN:HD22	1:D:226:ASN:C	2.16	0.47
1:C:249:ALA:N	1:C:264:ASP:O	2.48	0.47
1:D:158:LEU:HD11	1:D:184:MET:CG	2.44	0.47
1:D:324:HIS:HD2	1:D:325:PHE:CE2	2.32	0.47
1:B:30:VAL:HG22	1:B:268:VAL:HG22	1.97	0.47
1:A:56:PHE:CE2	1:A:190:TYR:CE1	3.01	0.47
1:D:213:ILE:HG13	1:D:322:LEU:HD21	1.96	0.47
1:B:168:ILE:O	1:B:171:VAL:HB	2.14	0.47
1:A:43:ASN:OD1	1:A:43:ASN:C	2.52	0.47
1:D:346:TYR:CD1	1:D:346:TYR:N	2.83	0.47
1:A:147:ASN:OD1	1:A:148:TYR:CE1	2.67	0.47
1:B:104:ILE:HA	1:B:108:ALA:HB3	1.96	0.47
1:C:198:GLY:HA2	2:C:410:HEM:CMC	2.45	0.47
1:D:129:LEU:HD21	1:D:153:MET:HA	1.96	0.47
1:A:293:MET:CE	1:A:299:ILE:HD12	2.44	0.47
1:D:115:ILE:HG21	1:D:313:GLU:OE2	2.14	0.47
1:D:192:MET:O	1:D:196:ILE:HG13	2.15	0.47
1:C:178:LYS:O	1:C:179:ASN:C	2.53	0.47
1:D:66:GLU:OE1	1:D:178:LYS:HB3	2.13	0.47
1:D:248:PHE:HE2	1:D:265:GLN:HG2	1.78	0.47
1:A:301:ILE:HG13	1:A:302:HIS:N	2.30	0.47
1:C:226:ASN:HD21	1:C:229:GLY:H	1.60	0.47
1:C:42:SER:O	1:C:58:THR:HA	2.15	0.47
1:B:68:ARG:NH1	1:B:303:MET:O	2.32	0.47
1:B:340:ASN:HD21	1:B:342:MET:CB	2.28	0.47
1:B:287:LYS:HB2	1:B:290:ARG:HE	1.79	0.47
1:B:65:LYS:HG2	1:B:69:ASP:OD2	2.15	0.47
1:A:237:TYR:O	1:A:275:ARG:NH2	2.47	0.47
1:D:108:ALA:O	1:D:109:VAL:C	2.53	0.47
1:D:157:LEU:HD23	1:D:188:ILE:HD12	1.97	0.47
1:B:140:ASN:HD22	1:B:140:ASN:HA	1.58	0.47
1:D:204:ASN:O	1:D:208:ASN:OD1	2.32	0.47
1:B:12:LEU:CD1	1:B:26:LYS:HA	2.44	0.47

Continued on next page...

Continued from previous page...

Atom-1	Atom-2	Interatomic distance (Å)	Clash overlap (Å)
1:D:281:ASP:OD1	1:D:282:GLU:HG2	2.14	0.47
1:A:129:LEU:HD21	1:A:153:MET:HA	1.96	0.47
1:C:154:VAL:HG22	1:C:192:MET:HE3	1.96	0.47
1:B:220:ILE:O	1:B:223:ALA:HB3	2.15	0.47
1:D:348:LYS:NZ	1:D:348:LYS:HB2	2.29	0.47
1:B:127:MET:HG3	1:B:131:LYS:CG	2.44	0.47
1:B:99:ASP:O	1:B:100:ASN:HB2	2.15	0.47
1:C:80:ILE:HG22	1:C:81:ASN:N	2.30	0.47
1:C:68:ARG:HH21	1:C:305:LEU:HD12	1.79	0.47
1:D:147:ASN:O	1:D:150:ASN:HB3	2.14	0.47
1:C:98:ILE:O	1:C:98:ILE:HG13	2.14	0.47
1:D:256:ASN:O	1:D:257:ASN:C	2.53	0.47
1:B:291:ARG:HG3	1:B:291:ARG:O	2.14	0.47
1:D:120:LEU:HD13	1:D:191:ILE:HG23	1.97	0.47
1:B:121:GLY:O	1:B:122:ILE:C	2.52	0.47
1:D:92:ASN:CA	1:D:95:ILE:HG22	2.44	0.47
1:B:151:ASN:N	1:B:151:ASN:ND2	2.63	0.47
1:A:236:ARG:NH2	1:A:283:PRO:O	2.48	0.46
1:D:211:ARG:O	1:D:214:ASP:HB3	2.15	0.46
1:B:272:SER:O	1:B:274:ASN:N	2.48	0.46
1:D:306:GLY:C	1:D:308:PRO:HD2	2.35	0.46
1:D:249:ALA:HB1	1:D:251:GLU:O	2.14	0.46
1:D:156:ARG:NH2	1:D:160:ILE:HD13	2.30	0.46
1:D:12:LEU:HD11	1:D:272:SER:O	2.16	0.46
1:C:138:ILE:HD13	1:C:200:GLU:HB2	1.96	0.46
1:A:27:TYR:CE1	1:A:295:LEU:HG	2.51	0.46
1:B:325:PHE:O	1:B:326:LYS:C	2.54	0.46
1:C:198:GLY:HA2	2:C:410:HEM:HMC3	1.96	0.46
1:D:145:ASN:O	1:D:149:VAL:CG2	2.63	0.46
1:B:153:MET:O	1:B:153:MET:HE2	2.15	0.46
1:D:226:ASN:HD22	1:D:227:ARG:N	2.13	0.46
1:D:94:LEU:O	1:D:95:ILE:C	2.53	0.46
1:C:102:ASP:O	1:C:106:GLU:HB2	2.15	0.46
1:C:60:ASP:O	1:C:61:ASN:C	2.53	0.46
1:D:133:TRP:HZ3	1:D:195:ILE:CG2	2.28	0.46
1:B:61:ASN:CA	1:B:64:HIS:HB3	2.43	0.46
1:D:306:GLY:O	1:D:307:ALA:C	2.53	0.46
1:B:94:LEU:CD2	1:B:110:ARG:HB2	2.46	0.46
1:C:234:THR:HA	1:C:286:PHE:HE1	1.80	0.46
1:C:17:HIS:HE1	1:C:20:GLY:O	1.98	0.46
1:D:269:TYR:N	1:D:269:TYR:CD1	2.84	0.46

Continued on next page...

Continued from previous page...

Atom-1	Atom-2	Interatomic distance (Å)	Clash overlap (Å)
1:B:203:THR:HG22	1:B:204:ASN:N	2.29	0.46
1:C:151:ASN:O	1:C:152:ARG:C	2.52	0.46
1:A:133:TRP:O	1:A:134:SER:C	2.54	0.46
1:B:87:ILE:HD12	1:B:312:LEU:HD22	1.95	0.46
1:A:79:LYS:HA	1:A:82:ASP:OD2	2.16	0.46
1:C:116:ILE:CG2	1:C:117:SER:N	2.79	0.46
1:C:73:PRO:HG2	1:C:74:TYR:H	1.81	0.46
1:B:99:ASP:O	1:B:100:ASN:CB	2.63	0.46
1:D:26:LYS:HG2	1:D:276:ASP:OD2	2.16	0.46
1:D:71:SER:C	1:D:73:PRO:HD2	2.36	0.46
1:C:209:MET:CE	1:C:314:ALA:HB1	2.45	0.46
1:C:54:ILE:HB	1:C:55:SER:H	1.48	0.46
1:A:319:ASN:O	1:A:320:ASP:C	2.55	0.46
1:B:92:ASN:HA	1:B:95:ILE:HG21	1.96	0.46
1:B:96:LYS:O	1:B:98:ILE:N	2.48	0.46
1:A:31:LYS:O	1:A:35:MET:HG2	2.15	0.46
1:A:202:THR:HA	2:A:410:HEM:HBB1	1.96	0.46
1:A:205:LEU:HD13	1:A:235:LEU:HD23	1.98	0.46
1:D:221:ASP:O	1:D:224:LEU:N	2.49	0.46
1:B:164:ASP:HA	1:B:170:ASN:HD21	1.80	0.46
1:C:302:HIS:ND1	2:C:410:HEM:O1D	2.47	0.46
1:B:202:THR:HA	2:B:410:HEM:HBB1	1.97	0.46
1:A:95:ILE:HG21	1:A:320:ASP:HB3	1.98	0.46
1:D:18:TYR:CE1	1:D:23:HIS:CE1	3.04	0.46
1:C:203:THR:O	1:C:204:ASN:C	2.53	0.46
1:D:312:LEU:CD2	1:D:316:ILE:HD11	2.46	0.46
1:A:81:ASN:C	1:A:83:TYR:N	2.69	0.46
1:B:299:ILE:HA	1:B:303:MET:HE1	1.95	0.45
1:C:61:ASN:CB	1:C:62:PRO:HD3	2.25	0.45
1:A:183:THR:HG22	1:A:185:ASP:N	2.32	0.45
1:A:312:LEU:HD22	1:A:316:ILE:HD11	1.98	0.45
1:D:276:ASP:OD1	1:D:278:THR:CB	2.62	0.45
1:C:294:HIS:HE1	1:C:296:ALA:HB3	1.78	0.45
1:B:87:ILE:HD13	1:B:313:GLU:HG2	1.99	0.45
1:C:247:ARG:CG	1:C:247:ARG:NH1	2.79	0.45
1:D:195:ILE:O	1:D:199:ASN:ND2	2.50	0.45
1:C:66:GLU:HG2	1:C:177:LEU:CD2	2.46	0.45
1:C:330:ILE:HG23	1:C:349:LEU:HD12	1.97	0.45
1:D:214:ASP:OD2	1:D:330:ILE:HG13	2.16	0.45
1:B:153:MET:HE2	1:B:157:LEU:HG	1.98	0.45
1:B:233:GLU:HG2	1:B:286:PHE:CD2	2.51	0.45

Continued on next page...

Continued from previous page...

Atom-1	Atom-2	Interatomic distance (Å)	Clash overlap (Å)
1:D:252:ASP:OD2	1:D:262:LYS:N	2.49	0.45
1:B:276:ASP:OD1	1:B:278:THR:N	2.48	0.45
1:D:322:LEU:HD23	1:D:328:ILE:HD12	1.97	0.45
1:D:113:VAL:O	1:D:117:SER:HB2	2.17	0.45
1:C:188:ILE:C	1:C:190:TYR:N	2.69	0.45
1:C:153:MET:CE	1:C:157:LEU:HB2	2.47	0.45
1:A:237:TYR:HE1	1:A:284:ASP:O	2.00	0.45
1:A:294:HIS:ND1	1:A:296:ALA:HB3	2.31	0.45
1:D:330:ILE:HA	1:D:351:LEU:HA	1.98	0.45
1:D:22:TRP:HB2	1:D:266:VAL:HA	1.99	0.45
1:B:88:GLU:OE1	1:B:316:ILE:HG23	2.17	0.45
1:D:57:ILE:HG12	1:D:57:ILE:O	2.17	0.45
1:B:349:LEU:HD23	1:B:350:PHE:N	2.32	0.45
1:A:242:GLN:O	1:A:243:PHE:HB3	2.17	0.45
1:B:189:LYS:HD3	1:B:189:LYS:HA	1.65	0.45
1:A:283:PRO:HG2	1:A:284:ASP:H	1.81	0.45
1:C:54:ILE:O	1:C:57:ILE:HG22	2.17	0.45
1:B:136:TYR:OH	1:B:143:ASP:HB2	2.17	0.45
1:A:337:LEU:HA	1:A:346:TYR:HA	1.99	0.45
1:C:282:GLU:HB3	1:C:285:LEU:HD12	1.99	0.45
1:A:263:GLY:O	1:A:264:ASP:C	2.54	0.45
1:A:333:LYS:HA	1:B:257:ASN:OD1	2.17	0.45
1:A:275:ARG:HG3	1:A:275:ARG:HH11	1.81	0.45
1:B:164:ASP:HA	1:B:170:ASN:OD1	2.17	0.45
1:B:67:PHE:O	1:B:70:ILE:N	2.49	0.45
1:B:92:ASN:CA	1:B:95:ILE:HG22	2.47	0.45
1:B:243:PHE:HB3	1:B:269:TYR:CD2	2.52	0.45
1:C:133:TRP:CZ3	1:C:196:ILE:HD11	2.51	0.45
1:C:340:ASN:ND2	1:C:342:MET:H	2.15	0.45
1:A:286:PHE:O	1:A:287:LYS:C	2.55	0.45
1:B:302:HIS:O	1:B:303:MET:C	2.55	0.45
1:D:116:ILE:HG12	1:D:198:GLY:HA3	1.99	0.45
1:B:120:LEU:HD23	1:B:120:LEU:N	2.33	0.45
1:B:132:LEU:CD1	1:B:141:LYS:NZ	2.80	0.45
1:C:13:ASN:OD1	1:C:14:ASP:N	2.50	0.45
1:B:282:GLU:HB3	1:B:285:LEU:CD1	2.47	0.45
1:D:274:ASN:OD1	1:D:294:HIS:HB2	2.17	0.45
1:D:75:PHE:HA	1:D:80:ILE:CD1	2.44	0.45
1:A:243:PHE:HB3	1:A:269:TYR:HA	1.99	0.45
1:A:158:LEU:CD2	1:C:81:ASN:ND2	2.78	0.45
1:A:158:LEU:HD21	1:C:312:LEU:HD21	1.98	0.45

Continued on next page...

Continued from previous page...

Atom-1	Atom-2	Interatomic distance (Å)	Clash overlap (Å)
1:A:299:ILE:HG23	1:A:299:ILE:O	2.17	0.45
1:A:281:ASP:O	1:A:282:GLU:C	2.55	0.44
1:D:136:TYR:C	1:D:138:ILE:H	2.21	0.44
1:C:72:ALA:O	1:C:73:PRO:C	2.54	0.44
1:A:178:LYS:HE3	1:A:179:ASN:OD1	2.17	0.44
1:A:178:LYS:HB3	1:A:179:ASN:H	1.45	0.44
1:C:351:LEU:O	1:C:352:SER:HB2	2.16	0.44
1:C:27:TYR:CE1	1:C:295:LEU:HD11	2.53	0.44
1:D:243:PHE:CE2	1:D:342:MET:HA	2.52	0.44
1:C:205:LEU:O	1:C:209:MET:N	2.50	0.44
1:D:185:ASP:OD1	1:D:189:LYS:CE	2.65	0.44
1:C:76:LEU:O	1:C:77:PRO:C	2.55	0.44
1:A:298:GLY:O	1:A:299:ILE:HB	2.18	0.44
1:D:60:ASP:O	1:D:62:PRO:HD2	2.16	0.44
1:A:237:TYR:CE2	1:A:238:TYR:CZ	3.06	0.44
1:A:236:ARG:O	1:A:274:ASN:HB3	2.16	0.44
1:D:182:LEU:HG	1:D:186:GLU:OE1	2.17	0.44
1:A:337:LEU:O	1:A:338:LEU:C	2.54	0.44
1:C:260:ILE:HD13	1:C:260:ILE:N	2.32	0.44
1:A:72:ALA:HA	1:A:305:LEU:HD11	2.00	0.44
1:B:61:ASN:N	1:B:64:HIS:HB3	2.32	0.44
1:D:32:HIS:ND1	1:D:36:ASN:ND2	2.66	0.44
1:D:120:LEU:O	1:D:167:GLY:HA3	2.17	0.44
1:D:145:ASN:O	1:D:149:VAL:HG23	2.17	0.44
1:B:201:THR:HB	2:B:410:HEM:CAB	2.47	0.44
1:D:226:ASN:HD21	1:D:229:GLY:H	1.63	0.44
1:C:236:ARG:NH2	1:C:283:PRO:O	2.50	0.44
1:B:43:ASN:C	1:B:248:PHE:CD1	2.91	0.44
1:A:292:GLU:OE1	1:A:292:GLU:HA	2.18	0.44
1:A:325:PHE:O	1:A:326:LYS:C	2.56	0.44
1:C:70:ILE:HG22	1:C:70:ILE:O	2.17	0.44
1:B:134:SER:CA	1:B:137:ILE:HG12	2.48	0.44
1:B:98:ILE:O	1:B:100:ASN:N	2.50	0.44
1:C:244:LEU:HB2	1:C:268:VAL:CG2	2.48	0.44
1:C:32:HIS:CD2	1:C:36:ASN:ND2	2.85	0.44
1:B:252:ASP:OD2	1:B:252:ASP:N	2.50	0.44
1:B:90:THR:O	1:B:93:ASP:HB2	2.16	0.44
1:B:119:ILE:HD13	1:B:309:LEU:HD22	1.99	0.44
1:A:227:ARG:NH1	1:A:315:SER:OG	2.47	0.44
1:B:148:TYR:CZ	1:D:293:MET:HG3	2.53	0.44
1:C:141:LYS:HG3	1:C:142:ARG:N	2.33	0.44

Continued on next page...

Continued from previous page...

Atom-1	Atom-2	Interatomic distance (Å)	Clash overlap (Å)
1:D:96:LYS:HB3	1:D:97:ASN:H	1.57	0.44
1:B:123:PRO:C	1:B:125:SER:N	2.72	0.44
1:C:46:ASN:O	1:C:47:ARG:HB2	2.17	0.44
1:A:196:ILE:HG22	1:A:196:ILE:O	2.18	0.44
1:A:110:ARG:C	1:A:113:VAL:HG12	2.38	0.44
1:A:169:ILE:HG12	1:A:191:ILE:CD1	2.45	0.43
1:A:169:ILE:HG23	1:A:191:ILE:HD11	1.99	0.43
1:B:27:TYR:O	1:B:30:VAL:N	2.51	0.43
1:C:30:VAL:HG13	1:C:268:VAL:HB	2.00	0.43
1:C:188:ILE:O	1:C:190:TYR:N	2.50	0.43
1:B:111:LEU:HB3	1:B:112:PRO:CD	2.48	0.43
1:C:128:PRO:O	1:C:129:LEU:C	2.56	0.43
1:C:134:SER:O	1:C:138:ILE:CB	2.65	0.43
1:C:330:ILE:CG2	1:C:331:ASP:N	2.70	0.43
1:A:134:SER:O	1:A:138:ILE:CD1	2.66	0.43
1:D:43:ASN:C	1:D:43:ASN:ND2	2.71	0.43
1:D:34:LEU:HD13	1:D:299:ILE:HG22	2.00	0.43
1:B:172:LEU:O	1:B:187:LYS:NZ	2.51	0.43
1:D:132:LEU:C	1:D:134:SER:H	2.20	0.43
1:D:72:ALA:N	1:D:73:PRO:HD2	2.34	0.43
1:A:117:SER:HB3	1:A:122:ILE:O	2.18	0.43
1:B:131:LYS:O	1:B:134:SER:OG	2.36	0.43
1:B:98:ILE:O	1:B:99:ASP:C	2.57	0.43
1:C:15:PRO:HA	1:C:23:HIS:O	2.18	0.43
1:A:158:LEU:HD22	1:C:81:ASN:HD21	1.81	0.43
1:A:83:TYR:HE2	1:A:118:LYS:HD2	1.83	0.43
1:A:236:ARG:CG	1:A:274:ASN:HD22	2.31	0.43
1:D:17:HIS:HB2	1:D:22:TRP:CZ3	2.53	0.43
1:D:282:GLU:N	1:D:283:PRO:CD	2.80	0.43
1:C:280:PHE:HB2	1:C:283:PRO:HB3	2.00	0.43
1:A:62:PRO:CG	1:A:63:GLU:H	2.32	0.43
1:B:267:ILE:N	1:B:267:ILE:CD1	2.81	0.43
1:D:156:ARG:CA	1:D:156:ARG:HE	2.27	0.43
1:B:272:SER:O	1:B:273:ALA:C	2.56	0.43
1:A:177:LEU:O	1:A:178:LYS:HB2	2.18	0.43
1:C:320:ASP:HA	1:C:323:ASN:HD22	1.83	0.43
1:C:105:SER:HA	1:C:109:VAL:HB	2.00	0.43
1:A:71:SER:C	1:A:73:PRO:HD2	2.39	0.43
1:A:236:ARG:CG	1:A:236:ARG:HH11	2.32	0.43
1:D:151:ASN:O	1:D:152:ARG:C	2.57	0.43
1:D:60:ASP:O	1:D:62:PRO:CD	2.66	0.43

Continued on next page...

Continued from previous page...

Atom-1	Atom-2	Interatomic distance (Å)	Clash overlap (Å)
1:B:297:PHE:HE2	1:B:311:ARG:CZ	2.32	0.43
1:C:18:TYR:CD1	1:C:19:ASP:CG	2.92	0.43
1:A:260:ILE:N	1:A:260:ILE:HD13	2.33	0.43
1:B:207:GLY:O	1:B:210:ILE:HB	2.19	0.43
1:B:239:SER:O	1:B:242:GLN:NE2	2.48	0.43
1:D:117:SER:OG	1:D:122:ILE:HB	2.18	0.43
1:B:133:TRP:CE2	1:B:137:ILE:HD11	2.54	0.43
1:C:282:GLU:HB3	1:C:285:LEU:CD1	2.49	0.43
1:C:190:TYR:O	1:C:193:LEU:HB3	2.19	0.43
1:A:289:GLY:O	1:A:290:ARG:O	2.37	0.43
1:B:53:GLY:O	1:B:54:ILE:HG23	2.19	0.43
1:D:158:LEU:HD11	1:D:184:MET:HG2	2.01	0.43
1:D:56:PHE:HE2	1:D:190:TYR:CE1	2.36	0.43
1:A:88:GLU:HG3	1:A:316:ILE:CG2	2.48	0.43
1:A:31:LYS:HB2	1:A:295:LEU:HD11	1.99	0.43
1:D:287:LYS:HB2	1:D:290:ARG:HE	1.84	0.43
1:C:18:TYR:HD1	1:C:19:ASP:CG	2.22	0.43
1:D:261:LYS:HG3	1:D:261:LYS:H	1.45	0.43
1:B:122:ILE:HG13	1:B:130:PHE:CD1	2.54	0.43
1:A:18:TYR:HD1	1:A:18:TYR:O	2.02	0.43
1:C:235:LEU:O	1:C:239:SER:HA	2.19	0.43
1:B:113:VAL:HG13	1:B:114:ASN:N	2.34	0.43
1:B:199:ASN:HA	1:B:199:ASN:HD22	1.60	0.43
1:C:98:ILE:O	1:C:101:LYS:HB2	2.19	0.43
1:A:330:ILE:O	1:A:331:ASP:C	2.58	0.42
1:A:115:ILE:O	1:A:119:ILE:HG13	2.18	0.42
1:C:210:ILE:O	1:C:213:ILE:HB	2.19	0.42
1:A:336:ARG:NH1	1:B:254:TYR:CE2	2.87	0.42
1:C:287:LYS:HD3	1:C:290:ARG:CZ	2.48	0.42
1:D:133:TRP:CZ3	1:D:195:ILE:HG21	2.54	0.42
1:C:73:PRO:HG2	1:C:74:TYR:N	2.34	0.42
1:D:325:PHE:O	1:D:326:LYS:C	2.55	0.42
1:B:130:PHE:O	1:B:132:LEU:N	2.52	0.42
1:A:200:GLU:C	1:A:202:THR:H	2.21	0.42
1:D:195:ILE:O	1:D:196:ILE:C	2.58	0.42
1:B:99:ASP:N	1:B:99:ASP:OD1	2.50	0.42
1:C:156:ARG:HH21	1:C:160:ILE:HD13	1.84	0.42
1:C:88:GLU:O	1:C:92:ASN:HB2	2.19	0.42
1:A:297:PHE:CD2	1:A:311:ARG:NH2	2.87	0.42
1:B:271:GLY:O	1:B:272:SER:C	2.58	0.42
1:C:250:ALA:C	1:C:262:LYS:HG3	2.40	0.42

Continued on next page...

Continued from previous page...

Atom-1	Atom-2	Interatomic distance (Å)	Clash overlap (Å)
1:D:126:ASP:CG	1:D:156:ARG:HD3	2.40	0.42
1:A:324:HIS:O	1:A:324:HIS:ND1	2.53	0.42
1:B:116:ILE:HG22	1:B:117:SER:N	2.34	0.42
1:A:176:SER:HB2	1:A:181:LYS:CA	2.37	0.42
1:A:56:PHE:HE2	1:A:190:TYR:CE1	2.37	0.42
1:A:15:PRO:HA	1:A:23:HIS:O	2.19	0.42
1:B:198:GLY:O	1:B:199:ASN:CB	2.67	0.42
1:D:32:HIS:O	1:D:33:VAL:C	2.58	0.42
1:B:54:ILE:O	1:B:55:SER:CB	2.67	0.42
1:D:116:ILE:HG13	1:D:198:GLY:HA3	2.02	0.42
1:D:63:GLU:OE2	1:D:67:PHE:HE1	2.01	0.42
1:C:174:GLY:O	1:C:175:SER:HB3	2.20	0.42
1:D:170:ASN:O	1:D:171:VAL:C	2.57	0.42
1:B:227:ARG:NH1	1:B:315:SER:HB3	2.33	0.42
1:C:104:ILE:HA	1:C:108:ALA:HB3	2.02	0.42
1:C:104:ILE:HD11	1:C:346:TYR:HB2	2.02	0.42
1:B:172:LEU:HD23	1:B:172:LEU:HA	1.73	0.42
1:C:148:TYR:O	1:C:149:VAL:C	2.57	0.42
1:A:162:LYS:O	1:A:163:SER:C	2.57	0.42
1:D:65:LYS:O	1:D:66:GLU:C	2.58	0.42
1:B:129:LEU:HD12	1:B:129:LEU:N	2.26	0.42
1:A:227:ARG:NH1	1:A:227:ARG:HB3	2.35	0.42
1:D:17:HIS:HA	1:D:21:ALA:O	2.19	0.42
1:B:112:PRO:O	1:B:115:ILE:N	2.51	0.42
1:B:132:LEU:O	1:B:133:TRP:C	2.57	0.42
1:A:209:MET:O	1:A:213:ILE:HG12	2.20	0.42
1:B:44:PRO:HA	1:B:248:PHE:CE1	2.55	0.42
1:C:80:ILE:HD12	1:C:80:ILE:HA	1.86	0.42
1:D:342:MET:HG2	1:D:342:MET:O	2.20	0.42
1:B:311:ARG:O	1:B:314:ALA:HB3	2.20	0.42
1:D:36:ASN:HB3	1:D:39:ILE:HD12	2.01	0.42
1:B:28:SER:O	1:B:32:HIS:HB2	2.20	0.42
1:A:289:GLY:O	1:A:290:ARG:C	2.58	0.42
1:B:182:LEU:HD13	1:B:187:LYS:CE	2.50	0.42
1:D:110:ARG:O	1:D:111:LEU:C	2.58	0.42
1:D:119:ILE:O	1:D:167:GLY:HA2	2.20	0.42
1:D:203:THR:O	1:D:204:ASN:C	2.56	0.42
1:D:236:ARG:NH2	1:D:283:PRO:O	2.52	0.42
1:D:280:PHE:HD2	1:D:290:ARG:NH1	2.17	0.42
1:A:23:HIS:ND1	1:A:269:TYR:CE1	2.87	0.42
1:C:122:ILE:HD12	1:C:130:PHE:CE1	2.54	0.42

Continued on next page...

Continued from previous page...

Atom-1	Atom-2	Interatomic distance (Å)	Clash overlap (Å)
1:D:26:LYS:HB2	1:D:29:ASP:OD2	2.19	0.42
1:B:31:LYS:HG3	1:B:299:ILE:HD13	2.02	0.42
1:D:211:ARG:NH2	1:D:238:TYR:OH	2.53	0.42
1:B:236:ARG:HG3	1:B:294:HIS:HB3	2.02	0.42
1:D:248:PHE:CA	1:D:264:ASP:O	2.64	0.42
1:A:18:TYR:C	1:A:20:GLY:N	2.71	0.42
1:C:243:PHE:CE2	1:C:342:MET:HA	2.55	0.42
1:D:240:PRO:O	1:D:343:VAL:HA	2.20	0.42
1:D:275:ARG:HG3	1:D:275:ARG:HH11	1.85	0.42
1:A:152:ARG:HD2	1:A:152:ARG:HA	1.88	0.42
1:C:83:TYR:CE1	1:C:119:ILE:HG12	2.55	0.42
1:B:42:SER:HB2	1:B:302:HIS:NE2	2.35	0.41
1:C:238:TYR:HB3	1:C:344:LEU:HD23	2.01	0.41
1:C:65:LYS:O	1:C:69:ASP:CB	2.67	0.41
1:C:219:ILE:HA	1:C:219:ILE:HD12	1.73	0.41
1:C:131:LYS:O	1:C:132:LEU:C	2.57	0.41
1:C:200:GLU:O	1:C:202:THR:N	2.54	0.41
1:C:55:SER:OG	1:C:56:PHE:N	2.52	0.41
1:A:87:ILE:CG2	1:A:316:ILE:HD12	2.46	0.41
1:B:27:TYR:HA	1:B:273:ALA:HB1	2.02	0.41
1:D:156:ARG:NH2	1:D:159:GLU:OE2	2.53	0.41
1:B:93:ASP:O	1:B:94:LEU:C	2.59	0.41
1:B:138:ILE:CD1	1:B:140:ASN:HB2	2.32	0.41
1:A:27:TYR:O	1:A:31:LYS:HB2	2.19	0.41
1:C:77:PRO:O	1:C:80:ILE:HG22	2.20	0.41
1:D:126:ASP:OD1	1:D:156:ARG:HD3	2.18	0.41
1:A:326:LYS:HD3	1:A:326:LYS:HA	1.87	0.41
1:A:136:TYR:CE2	1:A:146:PHE:HB2	2.55	0.41
1:A:120:LEU:CD2	1:A:168:ILE:HB	2.51	0.41
1:A:18:TYR:CD1	1:A:19:ASP:HB2	2.55	0.41
1:C:77:PRO:HD3	1:C:308:PRO:HG2	2.01	0.41
1:C:18:TYR:HD1	1:C:19:ASP:OD2	2.03	0.41
1:A:281:ASP:O	1:A:290:ARG:NH2	2.51	0.41
1:D:183:THR:HG22	1:D:184:MET:N	2.35	0.41
1:D:174:GLY:O	1:D:175:SER:CB	2.66	0.41
1:D:227:ARG:CZ	1:D:319:ASN:HD22	2.31	0.41
1:A:227:ARG:NH1	1:A:227:ARG:CB	2.84	0.41
1:B:12:LEU:HD22	1:B:272:SER:HG	1.84	0.41
1:D:277:GLU:HG3	1:D:277:GLU:H	1.72	0.41
1:C:188:ILE:O	1:C:189:LYS:C	2.56	0.41
1:C:27:TYR:CD1	1:C:273:ALA:O	2.73	0.41

Continued on next page...

Continued from previous page...

Atom-1	Atom-2	Interatomic distance (Å)	Clash overlap (Å)
1:C:245:PRO:HG2	1:C:246:HIS:N	2.34	0.41
1:C:40:PHE:CD2	1:C:266:VAL:HG21	2.55	0.41
1:A:236:ARG:HG3	1:A:274:ASN:ND2	2.35	0.41
1:B:67:PHE:O	1:B:68:ARG:C	2.58	0.41
1:B:243:PHE:HB2	1:B:268:VAL:O	2.21	0.41
1:C:183:THR:HB	1:C:186:GLU:H	1.84	0.41
1:C:259:LYS:O	1:C:259:LYS:CG	2.69	0.41
1:A:336:ARG:NH1	1:B:254:TYR:CD2	2.89	0.41
1:D:85:ASP:HA	1:D:88:GLU:OE1	2.21	0.41
1:B:146:PHE:O	1:B:147:ASN:C	2.59	0.41
1:B:172:LEU:HA	1:B:175:SER:OG	2.20	0.41
1:D:131:LYS:O	1:D:134:SER:OG	2.27	0.41
1:D:233:GLU:HG3	1:D:286:PHE:CE1	2.55	0.41
1:C:213:ILE:CG2	1:C:328:ILE:HB	2.51	0.41
1:A:117:SER:OG	1:A:127:MET:HG2	2.20	0.41
1:D:12:LEU:CD1	1:D:25:TYR:O	2.68	0.41
1:C:347:ASP:O	1:C:348:LYS:HE3	2.20	0.41
1:D:81:ASN:C	1:D:83:TYR:H	2.23	0.41
1:A:329:LYS:HD2	1:A:352:SER:OXT	2.20	0.41
1:A:286:PHE:CD2	1:A:286:PHE:O	2.73	0.41
1:D:236:ARG:HD2	1:D:280:PHE:CE2	2.56	0.41
1:A:133:TRP:CH2	1:A:196:ILE:HD11	2.56	0.41
1:A:178:LYS:CE	1:A:179:ASN:OD1	2.68	0.41
1:A:23:HIS:CE1	1:A:267:ILE:CD1	3.02	0.41
1:B:21:ALA:CB	1:B:267:ILE:HD13	2.48	0.41
1:C:77:PRO:O	1:C:78:SER:C	2.59	0.41
1:C:92:ASN:HA	1:C:95:ILE:HG22	2.03	0.41
1:C:44:PRO:HB3	1:C:248:PHE:CE2	2.56	0.41
1:C:120:LEU:HD21	1:C:194:LEU:HB3	2.03	0.41
1:C:136:TYR:CZ	1:C:143:ASP:HB2	2.55	0.41
1:C:202:THR:N	2:C:410:HEM:HBB2	2.35	0.41
1:D:116:ILE:CG2	1:D:117:SER:N	2.83	0.41
1:A:162:LYS:O	1:A:163:SER:O	2.39	0.41
1:D:351:LEU:HB3	1:D:352:SER:H	1.66	0.41
1:B:153:MET:HG3	1:B:157:LEU:CD1	2.49	0.41
1:B:349:LEU:CD2	1:B:350:PHE:N	2.84	0.41
1:A:98:ILE:HD11	1:A:107:TYR:HB2	1.98	0.41
1:A:97:ASN:O	1:A:98:ILE:C	2.60	0.41
1:A:140:ASN:O	1:A:141:LYS:HB2	2.21	0.41
1:B:216:ASN:N	1:B:217:PRO:HD3	2.36	0.41
1:A:80:ILE:CG2	1:A:81:ASN:N	2.82	0.41

Continued on next page...

Continued from previous page...

Atom-1	Atom-2	Interatomic distance (Å)	Clash overlap (Å)
1:A:79:LYS:HA	1:A:79:LYS:HD3	1.83	0.41
1:C:32:HIS:O	1:C:33:VAL:C	2.58	0.41
1:C:212:VAL:O	1:C:216:ASN:N	2.50	0.41
1:C:211:ARG:O	1:C:212:VAL:C	2.59	0.41
1:B:34:LEU:O	1:B:36:ASN:N	2.54	0.41
1:C:134:SER:C	1:C:138:ILE:HD12	2.41	0.41
1:B:142:ARG:HG2	1:B:142:ARG:H	1.72	0.41
1:B:127:MET:HG3	1:B:131:LYS:CD	2.51	0.41
1:B:113:VAL:C	1:B:115:ILE:H	2.24	0.41
1:B:69:ASP:C	1:B:71:SER:H	2.24	0.41
1:D:246:HIS:O	1:D:247:ARG:HD3	2.21	0.41
1:B:183:THR:CG2	1:B:184:MET:H	2.34	0.40
1:C:136:TYR:CD2	1:C:146:PHE:CB	3.04	0.40
1:C:136:TYR:HE2	1:C:143:ASP:HB2	1.83	0.40
1:A:164:ASP:CG	1:A:165:SER:H	2.25	0.40
1:A:312:LEU:HD22	1:A:316:ILE:CD1	2.51	0.40
1:B:233:GLU:HG2	1:B:286:PHE:CE2	2.55	0.40
1:D:17:HIS:HE1	1:D:20:GLY:HA2	1.85	0.40
1:B:43:ASN:C	1:B:248:PHE:HD1	2.23	0.40
1:B:149:VAL:O	1:B:150:ASN:C	2.59	0.40
1:A:183:THR:CB	1:A:186:GLU:HG3	2.33	0.40
1:A:140:ASN:OD1	1:A:338:LEU:HD13	2.21	0.40
1:C:252:ASP:HB3	1:C:259:LYS:HZ1	1.82	0.40
1:D:336:ARG:HD3	1:D:336:ARG:HA	1.91	0.40
1:C:204:ASN:HB3	1:C:344:LEU:O	2.21	0.40
1:D:135:ASP:HA	1:D:138:ILE:CG1	2.52	0.40
1:C:331:ASP:C	1:C:333:LYS:H	2.24	0.40
1:D:80:ILE:CG2	1:D:312:LEU:HD12	2.46	0.40
1:D:24:VAL:HG13	1:D:29:ASP:HB3	2.03	0.40
1:C:299:ILE:HA	1:C:303:MET:HG3	2.02	0.40
1:D:144:GLU:HA	1:D:147:ASN:HB3	2.03	0.40
1:B:211:ARG:HB2	1:B:346:TYR:OH	2.22	0.40
1:B:178:LYS:C	1:B:180:ARG:N	2.72	0.40
1:B:156:ARG:O	1:B:159:GLU:HB3	2.20	0.40
1:D:18:TYR:HD1	1:D:19:ASP:OD1	2.04	0.40
1:C:351:LEU:HD12	1:C:351:LEU:N	2.26	0.40
1:A:221:ASP:O	1:A:225:LYS:HG3	2.21	0.40
1:C:80:ILE:HG22	1:C:81:ASN:H	1.86	0.40
1:A:247:ARG:HB2	1:A:266:VAL:O	2.22	0.40
1:A:110:ARG:HA	1:A:113:VAL:CG1	2.52	0.40
1:B:156:ARG:CZ	1:D:226:ASN:ND2	2.84	0.40

Continued on next page...

Continued from previous page...

Atom-1	Atom-2	Interatomic distance (Å)	Clash overlap (Å)
1:A:325:PHE:O	1:A:326:LYS:O	2.39	0.40

There are no symmetry-related clashes.

5.3 Torsion angles [i](#)

5.3.1 Protein backbone [i](#)

In the following table, the Percentiles column shows the percent Ramachandran outliers of the chain as a percentile score with respect to all X-ray entries followed by that with respect to entries of similar resolution.

The Analysed column shows the number of residues for which the backbone conformation was analysed, and the total number of residues.

Mol	Chain	Analysed	Favoured	Allowed	Outliers	Percentiles	
1	A	334/343 (97%)	242 (72%)	59 (18%)	33 (10%)	1	4
1	B	334/343 (97%)	216 (65%)	81 (24%)	37 (11%)	0	3
1	C	334/343 (97%)	230 (69%)	73 (22%)	31 (9%)	1	4
1	D	334/343 (97%)	229 (69%)	70 (21%)	35 (10%)	1	3
All	All	1336/1372 (97%)	917 (69%)	283 (21%)	136 (10%)	1	4

All (136) Ramachandran outliers are listed below:

Mol	Chain	Res	Type
1	A	19	ASP
1	A	61	ASN
1	A	163	SER
1	A	164	ASP
1	A	173	ALA
1	A	201	THR
1	A	220	ILE
1	B	35	MET
1	B	46	ASN
1	B	64	HIS
1	B	70	ILE
1	B	96	LYS
1	B	97	ASN
1	B	199	ASN

Continued on next page...

Continued from previous page...

Mol	Chain	Res	Type
1	B	327	ARG
1	C	13	ASN
1	C	61	ASN
1	C	96	LYS
1	C	104	ILE
1	C	177	LEU
1	C	219	ILE
1	C	299	ILE
1	C	330	ILE
1	C	331	ASP
1	D	45	GLY
1	D	61	ASN
1	D	96	LYS
1	D	108	ALA
1	D	115	ILE
1	D	135	ASP
1	D	136	TYR
1	D	163	SER
1	D	173	ALA
1	D	175	SER
1	A	45	GLY
1	A	271	GLY
1	A	290	ARG
1	A	299	ILE
1	A	326	LYS
1	B	44	PRO
1	B	99	ASP
1	B	125	SER
1	B	141	LYS
1	B	165	SER
1	B	182	LEU
1	B	220	ILE
1	C	54	ILE
1	C	78	SER
1	C	105	SER
1	C	144	GLU
1	C	164	ASP
1	C	176	SER
1	C	201	THR
1	C	225	LYS
1	C	327	ARG
1	C	340	ASN

Continued on next page...

Continued from previous page...

Mol	Chain	Res	Type
1	D	15	PRO
1	D	70	ILE
1	D	109	VAL
1	D	138	ILE
1	D	142	ARG
1	D	165	SER
1	D	220	ILE
1	D	251	GLU
1	D	261	LYS
1	D	283	PRO
1	A	21	ALA
1	A	46	ASN
1	A	100	ASN
1	A	141	LYS
1	A	176	SER
1	A	217	PRO
1	A	221	ASP
1	A	264	ASP
1	A	321	ILE
1	B	27	TYR
1	B	80	ILE
1	B	89	GLU
1	B	107	TYR
1	B	124	ASP
1	B	140	ASN
1	B	179	ASN
1	B	273	ALA
1	C	19	ASP
1	C	32	HIS
1	C	45	GLY
1	C	47	ARG
1	C	179	ASN
1	C	245	PRO
1	D	32	HIS
1	D	33	VAL
1	D	133	TRP
1	D	164	ASP
1	D	172	LEU
1	D	200	GLU
1	A	341	LYS
1	B	15	PRO
1	B	18	TYR

Continued on next page...

Continued from previous page...

Mol	Chain	Res	Type
1	B	112	PRO
1	B	160	ILE
1	B	251	GLU
1	C	163	SER
1	C	223	ALA
1	D	95	ILE
1	D	234	THR
1	D	235	LEU
1	D	257	ASN
1	A	86	PHE
1	A	123	PRO
1	A	149	VAL
1	A	152	ARG
1	A	168	ILE
1	B	61	ASN
1	B	91	SER
1	B	93	ASP
1	B	123	PRO
1	B	178	LYS
1	B	289	GLY
1	B	299	ILE
1	C	142	ARG
1	C	173	ALA
1	C	283	PRO
1	D	326	LYS
1	D	333	LYS
1	D	338	LEU
1	A	284	ASP
1	D	139	GLY
1	A	77	PRO
1	A	138	ILE
1	C	33	VAL
1	A	104	ILE
1	A	255	ILE
1	D	98	ILE
1	A	62	PRO
1	B	95	ILE
1	B	197	GLY

5.3.2 Protein sidechains ⓘ

In the following table, the Percentiles column shows the percent sidechain outliers of the chain as a percentile score with respect to all X-ray entries followed by that with respect to entries of similar resolution.

The Analysed column shows the number of residues for which the sidechain conformation was analysed, and the total number of residues.

Mol	Chain	Analysed	Rotameric	Outliers	Percentiles	
1	A	307/310 (99%)	281 (92%)	26 (8%)	13	45
1	B	307/310 (99%)	268 (87%)	39 (13%)	5	22
1	C	307/310 (99%)	273 (89%)	34 (11%)	8	29
1	D	304/310 (98%)	279 (92%)	25 (8%)	14	47
All	All	1225/1240 (99%)	1101 (90%)	124 (10%)	9	33

All (124) residues with a non-rotameric sidechain are listed below:

Mol	Chain	Res	Type
1	A	13	ASN
1	A	16	VAL
1	A	18	TYR
1	A	48	TYR
1	A	54	ILE
1	A	59	MET
1	A	60	ASP
1	A	77	PRO
1	A	85	ASP
1	A	93	ASP
1	A	97	ASN
1	A	116	ILE
1	A	138	ILE
1	A	142	ARG
1	A	145	ASN
1	A	151	ASN
1	A	179	ASN
1	A	180	ARG
1	A	226	ASN
1	A	228	SER
1	A	232	GLU
1	A	236	ARG
1	A	248	PHE
1	A	277	GLU

Continued on next page...

Continued from previous page...

Mol	Chain	Res	Type
1	A	278	THR
1	A	312	LEU
1	B	13	ASN
1	B	43	ASN
1	B	47	ARG
1	B	48	TYR
1	B	54	ILE
1	B	56	PHE
1	B	63	GLU
1	B	77	PRO
1	B	97	ASN
1	B	99	ASP
1	B	109	VAL
1	B	116	ILE
1	B	123	PRO
1	B	140	ASN
1	B	142	ARG
1	B	144	GLU
1	B	147	ASN
1	B	152	ARG
1	B	159	GLU
1	B	161	PHE
1	B	163	SER
1	B	170	ASN
1	B	172	LEU
1	B	181	LYS
1	B	182	LEU
1	B	199	ASN
1	B	201	THR
1	B	202	THR
1	B	214	ASP
1	B	221	ASP
1	B	227	ARG
1	B	245	PRO
1	B	252	ASP
1	B	256	ASN
1	B	268	VAL
1	B	339	ASP
1	B	340	ASN
1	B	349	LEU
1	B	351	LEU
1	C	47	ARG

Continued on next page...

Continued from previous page...

Mol	Chain	Res	Type
1	C	49	SER
1	C	82	ASP
1	C	85	ASP
1	C	89	GLU
1	C	94	LEU
1	C	102	ASP
1	C	105	SER
1	C	116	ILE
1	C	118	LYS
1	C	132	LEU
1	C	148	TYR
1	C	151	ASN
1	C	153	MET
1	C	156	ARG
1	C	158	LEU
1	C	162	LYS
1	C	166	HIS
1	C	179	ASN
1	C	200	GLU
1	C	202	THR
1	C	218	ASP
1	C	222	ASP
1	C	226	ASN
1	C	232	GLU
1	C	247	ARG
1	C	248	PHE
1	C	256	ASN
1	C	284	ASP
1	C	319	ASN
1	C	320	ASP
1	C	329	LYS
1	C	340	ASN
1	C	351	LEU
1	D	17	HIS
1	D	43	ASN
1	D	54	ILE
1	D	55	SER
1	D	80	ILE
1	D	85	ASP
1	D	116	ILE
1	D	146	PHE
1	D	147	ASN

Continued on next page...

Continued from previous page...

Mol	Chain	Res	Type
1	D	149	VAL
1	D	153	MET
1	D	156	ARG
1	D	164	ASP
1	D	218	ASP
1	D	222	ASP
1	D	226	ASN
1	D	236	ARG
1	D	265	GLN
1	D	292	GLU
1	D	294	HIS
1	D	312	LEU
1	D	332	TYR
1	D	344	LEU
1	D	346	TYR
1	D	348	LYS

Some sidechains can be flipped to improve hydrogen bonding and reduce clashes. All (46) such sidechains are listed below:

Mol	Chain	Res	Type
1	A	13	ASN
1	A	97	ASN
1	A	100	ASN
1	A	147	ASN
1	A	170	ASN
1	A	199	ASN
1	A	226	ASN
1	A	246	HIS
1	A	256	ASN
1	A	274	ASN
1	A	319	ASN
1	B	100	ASN
1	B	140	ASN
1	B	145	ASN
1	B	151	ASN
1	B	199	ASN
1	B	208	ASN
1	B	226	ASN
1	B	265	GLN
1	B	340	ASN
1	C	17	HIS
1	C	32	HIS

Continued on next page...

Continued from previous page...

Mol	Chain	Res	Type
1	C	36	ASN
1	C	46	ASN
1	C	92	ASN
1	C	140	ASN
1	C	179	ASN
1	C	199	ASN
1	C	226	ASN
1	C	319	ASN
1	C	323	ASN
1	C	340	ASN
1	D	36	ASN
1	D	43	ASN
1	D	61	ASN
1	D	97	ASN
1	D	100	ASN
1	D	166	HIS
1	D	199	ASN
1	D	204	ASN
1	D	208	ASN
1	D	226	ASN
1	D	256	ASN
1	D	265	GLN
1	D	319	ASN
1	D	324	HIS

5.3.3 RNA [i](#)

There are no RNA molecules in this entry.

5.4 Non-standard residues in protein, DNA, RNA chains [i](#)

There are no non-standard protein/DNA/RNA residues in this entry.

5.5 Carbohydrates [i](#)

There are no carbohydrates in this entry.

5.6 Ligand geometry [i](#)

8 ligands are modelled in this entry.

In the following table, the Counts columns list the number of bonds (or angles) for which Mogul statistics could be retrieved, the number of bonds (or angles) that are observed in the model and the number of bonds (or angles) that are defined in the chemical component dictionary. The Link column lists molecule types, if any, to which the group is linked. The Z score for a bond length (or angle) is the number of standard deviations the observed value is removed from the expected value. A bond length (or angle) with $|Z| > 2$ is considered an outlier worth inspection. RMSZ is the root-mean-square of all Z scores of the bond lengths (or angles).

Mol	Type	Chain	Res	Link	Bond lengths			Bond angles		
					Counts	RMSZ	$\# Z > 2$	Counts	RMSZ	$\# Z > 2$
2	HEM	A	410	1,3	30,50,50	3.10	11 (36%)	24,82,82	2.40	11 (45%)
3	PIM	A	411	2	10,12,12	2.34	5 (50%)	11,15,15	1.65	1 (9%)
2	HEM	B	410	1,3	30,50,50	3.00	9 (30%)	24,82,82	2.64	12 (50%)
3	PIM	B	411	2	10,12,12	2.87	6 (60%)	11,15,15	1.54	1 (9%)
2	HEM	C	410	1,3	30,50,50	3.33	8 (26%)	24,82,82	2.27	6 (25%)
3	PIM	C	411	2	10,12,12	2.46	6 (60%)	11,15,15	1.74	3 (27%)
2	HEM	D	410	1,3	30,50,50	3.01	11 (36%)	24,82,82	2.44	8 (33%)
3	PIM	D	411	2	10,12,12	2.44	6 (60%)	11,15,15	1.61	2 (18%)

In the following table, the Chirals column lists the number of chiral outliers, the number of chiral centers analysed, the number of these observed in the model and the number defined in the chemical component dictionary. Similar counts are reported in the Torsion and Rings columns. '-' means no outliers of that kind were identified.

Mol	Type	Chain	Res	Link	Chirals	Torsions	Rings
2	HEM	A	410	1,3	-	0/10/54/54	0/0/8/8
3	PIM	A	411	2	-	0/4/4/4	0/2/2/2
2	HEM	B	410	1,3	-	0/10/54/54	0/0/8/8
3	PIM	B	411	2	-	0/4/4/4	0/2/2/2
2	HEM	C	410	1,3	-	0/10/54/54	0/0/8/8
3	PIM	C	411	2	-	0/4/4/4	0/2/2/2
2	HEM	D	410	1,3	-	0/10/54/54	0/0/8/8
3	PIM	D	411	2	-	0/4/4/4	0/2/2/2

All (62) bond length outliers are listed below:

Mol	Chain	Res	Type	Atoms	Z	Observed(Å)	Ideal(Å)
2	C	410	HEM	C3B-C4B	-9.95	1.43	1.51
2	B	410	HEM	C3B-C4B	-8.27	1.44	1.51
2	D	410	HEM	C3D-C4D	-7.80	1.41	1.51
2	A	410	HEM	C3B-C4B	-7.38	1.45	1.51
2	D	410	HEM	C3B-C4B	-7.36	1.45	1.51
2	A	410	HEM	C3B-CAB	-7.35	1.37	1.51

Continued on next page...

Continued from previous page...

Mol	Chain	Res	Type	Atoms	Z	Observed(Å)	Ideal(Å)
2	C	410	HEM	C3C-CAC	-7.25	1.37	1.51
2	A	410	HEM	C3D-C4D	-6.91	1.42	1.51
2	C	410	HEM	C3B-CAB	-6.81	1.38	1.51
2	C	410	HEM	C2D-C3D	-6.62	1.34	1.54
2	A	410	HEM	C3C-CAC	-6.39	1.39	1.51
2	D	410	HEM	C2D-C3D	-6.38	1.35	1.54
2	B	410	HEM	C2D-C3D	-6.37	1.35	1.54
2	D	410	HEM	C3B-CAB	-6.37	1.39	1.51
2	B	410	HEM	C3D-C4D	-5.98	1.43	1.51
2	B	410	HEM	C3C-CAC	-5.91	1.40	1.51
2	C	410	HEM	C3D-C4D	-5.74	1.44	1.51
2	C	410	HEM	C2C-C1C	-5.18	1.42	1.52
2	B	410	HEM	C3B-CAB	-5.01	1.41	1.51
2	B	410	HEM	C2C-C1C	-5.00	1.43	1.52
2	A	410	HEM	C2D-C3D	-4.93	1.39	1.54
2	D	410	HEM	C3C-CAC	-4.00	1.43	1.51
2	D	410	HEM	C2C-C1C	-3.67	1.45	1.52
2	A	410	HEM	C2C-C1C	-3.09	1.46	1.52
2	D	410	HEM	C2B-C1B	-2.77	1.42	1.51
2	A	410	HEM	C2B-C1B	-2.66	1.43	1.51
2	D	410	HEM	CAD-C3D	-2.51	1.49	1.54
2	A	410	HEM	C2D-C1D	-2.25	1.44	1.51
2	C	410	HEM	C2B-C1B	-2.16	1.44	1.51
2	D	410	HEM	C2D-C1D	-2.04	1.45	1.51
3	C	411	PIM	C6-C5	2.13	1.52	1.48
2	D	410	HEM	C1C-NC	2.18	1.38	1.36
2	B	410	HEM	C1C-NC	2.34	1.38	1.36
3	A	411	PIM	C9-C8	2.37	1.44	1.38
3	D	411	PIM	C9-C8	2.39	1.44	1.38
3	A	411	PIM	C10-C9	2.46	1.44	1.38
3	B	411	PIM	C9-C8	2.50	1.44	1.38
2	B	410	HEM	FE-NC	2.50	2.05	1.95
3	D	411	PIM	C10-C9	2.58	1.44	1.38
2	B	410	HEM	C4C-NC	2.70	1.39	1.36
2	A	410	HEM	CHC-C1C	2.74	1.42	1.36
3	C	411	PIM	C10-C9	2.83	1.45	1.38
3	C	411	PIM	C9-C8	2.85	1.45	1.38
3	D	411	PIM	C6-C5	2.88	1.53	1.48
3	B	411	PIM	C6-C5	2.93	1.53	1.48
2	C	410	HEM	C1C-NC	3.05	1.39	1.36
3	A	411	PIM	C10-C11	3.07	1.45	1.38
3	A	411	PIM	C7-C6	3.08	1.45	1.39

Continued on next page...

Continued from previous page...

Mol	Chain	Res	Type	Atoms	Z	Observed(Å)	Ideal(Å)
3	C	411	PIM	C10-C11	3.09	1.45	1.38
3	D	411	PIM	C7-C6	3.16	1.46	1.39
3	C	411	PIM	C7-C6	3.23	1.46	1.39
2	D	410	HEM	C4C-NC	3.28	1.40	1.36
3	D	411	PIM	C10-C11	3.34	1.45	1.38
3	B	411	PIM	C10-C9	3.42	1.46	1.38
2	A	410	HEM	C4C-NC	3.52	1.40	1.36
3	B	411	PIM	C10-C11	3.78	1.46	1.38
3	C	411	PIM	C8-C7	3.85	1.46	1.38
3	D	411	PIM	C8-C7	3.95	1.47	1.38
2	A	410	HEM	C1C-NC	4.01	1.41	1.36
3	B	411	PIM	C7-C6	4.01	1.47	1.39
3	A	411	PIM	C8-C7	4.19	1.47	1.38
3	B	411	PIM	C8-C7	4.68	1.48	1.38

All (44) bond angle outliers are listed below:

Mol	Chain	Res	Type	Atoms	Z	Observed(°)	Ideal(°)
3	A	411	PIM	C4-C5-C6	-3.48	124.60	129.44
2	D	410	HEM	CBA-CAA-C2A	-3.41	106.41	112.53
3	B	411	PIM	C4-C5-C6	-3.39	124.72	129.44
3	C	411	PIM	C4-C5-C6	-3.32	124.82	129.44
2	B	410	HEM	CAA-C2A-C1A	-3.30	123.43	127.01
3	D	411	PIM	C4-C5-C6	-3.25	124.92	129.44
2	A	410	HEM	CAA-C2A-C1A	-2.53	124.26	127.01
2	A	410	HEM	CMA-C3A-C4A	-2.40	124.40	128.36
2	B	410	HEM	C3B-C4B-CHC	-2.17	120.11	123.16
3	C	411	PIM	C9-C10-C11	-2.14	117.05	120.19
3	C	411	PIM	C7-C6-C5	-2.04	117.92	121.24
3	D	411	PIM	C4-N3-C2	2.04	108.92	105.71
2	A	410	HEM	CMC-C2C-C3C	2.24	122.13	116.53
2	A	410	HEM	CBD-CAD-C3D	2.36	120.43	113.55
2	C	410	HEM	CMD-C2D-C3D	2.39	124.93	114.35
2	B	410	HEM	C2C-C1C-NC	2.41	114.28	110.21
2	A	410	HEM	CAD-C3D-C4D	2.42	121.00	112.47
2	D	410	HEM	CAD-C3D-C4D	2.67	121.87	112.47
2	B	410	HEM	CMD-C2D-C3D	2.68	126.20	114.35
2	A	410	HEM	C3B-C4B-CHC	3.01	127.41	123.16
2	B	410	HEM	CMB-C2B-C3B	3.12	124.33	116.53
2	A	410	HEM	C2D-C3D-C4D	3.19	106.90	101.50
2	D	410	HEM	CMD-C2D-C3D	3.26	128.78	114.35
2	B	410	HEM	C3C-CAC-CBC	3.29	129.50	124.46

Continued on next page...

Continued from previous page...

Mol	Chain	Res	Type	Atoms	Z	Observed(°)	Ideal(°)
2	A	410	HEM	CMD-C2D-C3D	3.31	129.00	114.35
2	D	410	HEM	CMC-C2C-C3C	3.37	124.94	116.53
2	B	410	HEM	C2D-C3D-C4D	3.37	107.21	101.50
2	D	410	HEM	CMB-C2B-C3B	3.55	125.38	116.53
2	C	410	HEM	CAD-C3D-C2D	3.57	123.48	113.22
2	A	410	HEM	CBA-CAA-C2A	3.78	119.30	112.53
2	C	410	HEM	CAD-C3D-C4D	3.80	125.88	112.47
2	A	410	HEM	CMB-C2B-C3B	3.97	126.43	116.53
2	B	410	HEM	CAD-C3D-C2D	4.07	124.92	113.22
2	C	410	HEM	CMB-C2B-C3B	4.10	126.77	116.53
2	B	410	HEM	CAD-C3D-C4D	4.35	127.80	112.47
2	B	410	HEM	CBA-CAA-C2A	4.36	120.34	112.53
2	B	410	HEM	CMC-C2C-C3C	4.43	127.58	116.53
2	D	410	HEM	C3C-CAC-CBC	4.57	131.46	124.46
2	C	410	HEM	C2D-C3D-C4D	4.63	109.34	101.50
2	D	410	HEM	CAD-C3D-C2D	5.06	127.76	113.22
2	D	410	HEM	C2D-C3D-C4D	5.17	110.26	101.50
2	B	410	HEM	C3B-CAB-CBB	5.18	132.41	124.46
2	C	410	HEM	CMC-C2C-C3C	5.93	131.34	116.53
2	A	410	HEM	CAD-C3D-C2D	6.32	131.40	113.22

There are no chirality outliers.

There are no torsion outliers.

There are no ring outliers.

6 monomers are involved in 34 short contacts:

Mol	Chain	Res	Type	Clashes	Symm-Clashes
2	A	410	HEM	6	0
3	A	411	PIM	1	0
2	B	410	HEM	6	0
2	C	410	HEM	10	0
2	D	410	HEM	11	0
3	D	411	PIM	1	0

5.7 Other polymers ⓘ

There are no such residues in this entry.

5.8 Polymer linkage issues ⓘ

There are no chain breaks in this entry.

6 Fit of model and data ⓘ

6.1 Protein, DNA and RNA chains ⓘ

In the following table, the column labelled ‘#RSRZ> 2’ contains the number (and percentage) of RSRZ outliers, followed by percent RSRZ outliers for the chain as percentile scores relative to all X-ray entries and entries of similar resolution. The OWAB column contains the minimum, median, 95th percentile and maximum values of the occupancy-weighted average B-factor per residue. The column labelled ‘Q< 0.9’ lists the number of (and percentage) of residues with an average occupancy less than 0.9.

Mol	Chain	Analysed	<RSRZ>	#RSRZ>2	OWAB(Å ²)	Q<0.9
1	A	338/343 (98%)	-0.29	3 (0%) 85 72	16, 39, 65, 101	0
1	B	338/343 (98%)	-0.35	0 100 100	14, 41, 61, 92	0
1	C	338/343 (98%)	-0.30	1 (0%) 94 88	15, 41, 65, 89	0
1	D	338/343 (98%)	-0.30	3 (0%) 85 72	10, 41, 66, 103	0
All	All	1352/1372 (98%)	-0.31	7 (0%) 91 83	10, 40, 64, 103	0

All (7) RSRZ outliers are listed below:

Mol	Chain	Res	Type	RSRZ
1	A	53	GLY	4.2
1	D	166	HIS	3.0
1	A	49	SER	2.7
1	D	14	ASP	2.4
1	C	19	ASP	2.2
1	A	61	ASN	2.1
1	D	257	ASN	2.0

6.2 Non-standard residues in protein, DNA, RNA chains ⓘ

There are no non-standard protein/DNA/RNA residues in this entry.

6.3 Carbohydrates ⓘ

There are no carbohydrates in this entry.

6.4 Ligands [i](#)

In the following table, the Atoms column lists the number of modelled atoms in the group and the number defined in the chemical component dictionary. LLDF column lists the quality of electron density of the group with respect to its neighbouring residues in protein, DNA or RNA chains. The B-factors column lists the minimum, median, 95th percentile and maximum values of B factors of atoms in the group. The column labelled 'Q< 0.9' lists the number of atoms with occupancy less than 0.9.

Mol	Type	Chain	Res	Atoms	RSCC	RSR	LLDF	B-factors(Å ²)	Q<0.9
3	PIM	B	411	11/11	0.94	0.24	2.39	42,42,42,42	0
2	HEM	B	410	43/43	0.97	0.22	1.18	42,42,42,42	0
2	HEM	C	410	43/43	0.96	0.21	0.82	42,42,42,42	0
3	PIM	D	411	11/11	0.96	0.20	0.48	42,42,42,42	0
3	PIM	C	411	11/11	0.94	0.23	0.46	42,42,42,42	0
2	HEM	D	410	43/43	0.95	0.20	0.44	42,42,42,42	0
2	HEM	A	410	43/43	0.97	0.20	0.34	42,42,42,42	0
3	PIM	A	411	11/11	0.97	0.18	-0.31	42,42,42,42	0

6.5 Other polymers [i](#)

There are no such residues in this entry.