



wwPDB X-ray Structure Validation Summary Report ⓘ

Feb 1, 2016 – 12:30 PM GMT

PDB ID : 3RFA
Title : X-ray structure of RlmN from Escherichia coli in complex with S-adenosylmethionine
Authors : Boal, A.K.; Grove, T.L.; McLaughlin, M.I.; Yennawar, N.; Booker, S.J.; Rosenzweig, A.C.
Deposited on : 2011-04-05
Resolution : 2.05 Å(reported)

This is a wwPDB X-ray Structure Validation Summary Report for a publicly released PDB entry.
We welcome your comments at validation@mail.wwpdb.org
A user guide is available at
<http://wwpdb.org/validation/2016/XrayValidationReportHelp>
with specific help available everywhere you see the ⓘ symbol.

The following versions of software and data (see [references ⓘ](#)) were used in the production of this report:

MolProbity : 4.02b-467
Mogul : 1.7 (RC4), CSD as536be (2015)
Xtriage (Phenix) : 1.9-1692
EDS : rb-20026688
Percentile statistics : 20151230.v01 (using entries in the PDB archive December 30th 2015)
Refmac : 5.8.0135
CCP4 : 6.5.0
Ideal geometry (proteins) : Engh & Huber (2001)
Ideal geometry (DNA, RNA) : Parkinson et al. (1996)
Validation Pipeline (wwPDB-VP) : trunk26865

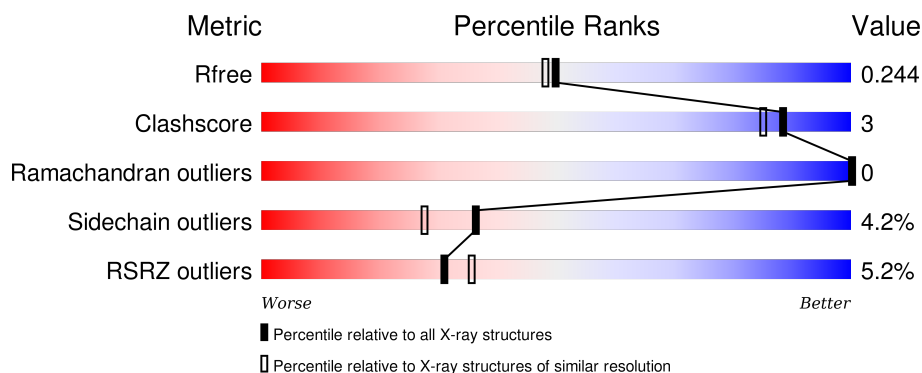
1 Overall quality at a glance

The following experimental techniques were used to determine the structure:

X-RAY DIFFRACTION

The reported resolution of this entry is 2.05 Å.

Percentile scores (ranging between 0-100) for global validation metrics of the entry are shown in the following graphic. The table shows the number of entries on which the scores are based.



Metric	Whole archive (#Entries)	Similar resolution (#Entries, resolution range(Å))
R_{free}	91344	1192 (2.04-2.04)
Clashscore	102246	1269 (2.04-2.04)
Ramachandran outliers	100387	1258 (2.04-2.04)
Sidechain outliers	100360	1258 (2.04-2.04)
RSRZ outliers	91569	1194 (2.04-2.04)

The table below summarises the geometric issues observed across the polymeric chains and their fit to the electron density. The red, orange, yellow and green segments on the lower bar indicate the fraction of residues that contain outliers for ≥ 3 , 2, 1 and 0 types of geometric quality criteria. A grey segment represents the fraction of residues that are not modelled. The numeric value for each fraction is indicated below the corresponding segment, with a dot representing fractions $\leq 5\%$. The upper red bar (where present) indicates the fraction of residues that have poor fit to the electron density. The numeric value is given above the bar.

Mol	Chain	Length	Quality of chain
1	A	404	 6% 74% 7% 18%
1	B	404	 3% 81% 8% 11%

2 Entry composition

There are 4 unique types of molecules in this entry. The entry contains 5714 atoms, of which 0 are hydrogens and 0 are deuteriums.

In the tables below, the ZeroOcc column contains the number of atoms modelled with zero occupancy, the AltConf column contains the number of residues with at least one atom in alternate conformation and the Trace column contains the number of residues modelled with at most 2 atoms.

- Molecule 1 is a protein called Ribosomal RNA large subunit methyltransferase N.

Mol	Chain	Residues	Atoms					ZeroOcc	AltConf	Trace
1	A	333	Total	C	N	O	S	0	0	0
			2630	1654	467	490	19			
1	B	359	Total	C	N	O	S	0	0	0
			2833	1775	509	528	21			

There are 40 discrepancies between the modelled and reference sequences:

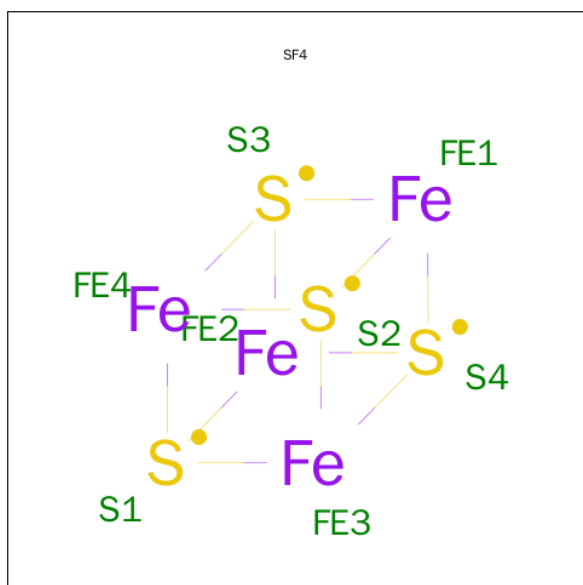
Chain	Residue	Modelled	Actual	Comment	Reference
B	385	GLY	-	EXPRESSION TAG	UNP P36979
B	386	ASN	-	EXPRESSION TAG	UNP P36979
B	387	SER	-	EXPRESSION TAG	UNP P36979
B	388	SER	-	EXPRESSION TAG	UNP P36979
B	389	SER	-	EXPRESSION TAG	UNP P36979
B	390	VAL	-	EXPRESSION TAG	UNP P36979
B	391	ASP	-	EXPRESSION TAG	UNP P36979
B	392	LYS	-	EXPRESSION TAG	UNP P36979
B	393	LEU	-	EXPRESSION TAG	UNP P36979
B	394	ALA	-	EXPRESSION TAG	UNP P36979
B	395	ALA	-	EXPRESSION TAG	UNP P36979
B	396	ALA	-	EXPRESSION TAG	UNP P36979
B	397	LEU	-	EXPRESSION TAG	UNP P36979
B	398	GLU	-	EXPRESSION TAG	UNP P36979
B	399	HIS	-	EXPRESSION TAG	UNP P36979
B	400	HIS	-	EXPRESSION TAG	UNP P36979
B	401	HIS	-	EXPRESSION TAG	UNP P36979
B	402	HIS	-	EXPRESSION TAG	UNP P36979
B	403	HIS	-	EXPRESSION TAG	UNP P36979
B	404	HIS	-	EXPRESSION TAG	UNP P36979
A	385	GLY	-	EXPRESSION TAG	UNP P36979
A	386	ASN	-	EXPRESSION TAG	UNP P36979
A	387	SER	-	EXPRESSION TAG	UNP P36979
A	388	SER	-	EXPRESSION TAG	UNP P36979
A	389	SER	-	EXPRESSION TAG	UNP P36979

Continued on next page...

Continued from previous page...

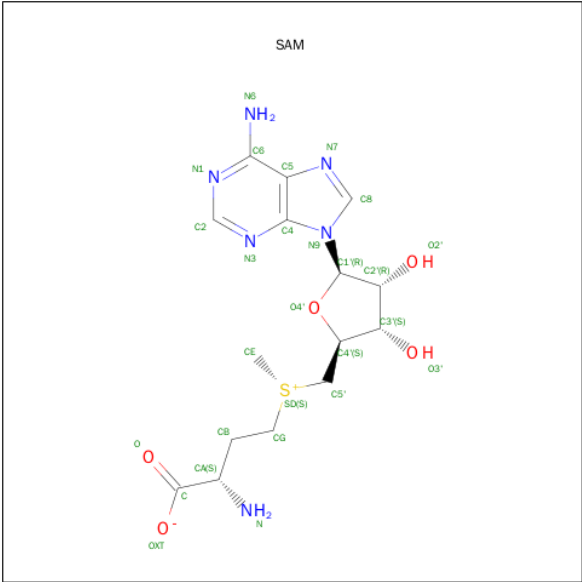
Chain	Residue	Modelled	Actual	Comment	Reference
A	390	VAL	-	EXPRESSION TAG	UNP P36979
A	391	ASP	-	EXPRESSION TAG	UNP P36979
A	392	LYS	-	EXPRESSION TAG	UNP P36979
A	393	LEU	-	EXPRESSION TAG	UNP P36979
A	394	ALA	-	EXPRESSION TAG	UNP P36979
A	395	ALA	-	EXPRESSION TAG	UNP P36979
A	396	ALA	-	EXPRESSION TAG	UNP P36979
A	397	LEU	-	EXPRESSION TAG	UNP P36979
A	398	GLU	-	EXPRESSION TAG	UNP P36979
A	399	HIS	-	EXPRESSION TAG	UNP P36979
A	400	HIS	-	EXPRESSION TAG	UNP P36979
A	401	HIS	-	EXPRESSION TAG	UNP P36979
A	402	HIS	-	EXPRESSION TAG	UNP P36979
A	403	HIS	-	EXPRESSION TAG	UNP P36979
A	404	HIS	-	EXPRESSION TAG	UNP P36979

- Molecule 2 is IRON/SULFUR CLUSTER (three-letter code: SF4) (formula: Fe₄S₄).



Mol	Chain	Residues	Atoms			ZeroOcc	AltConf
2	A	1	Total	Fe	S	0	0
			8	4	4		
2	B	1	Total	Fe	S	0	0
			8	4	4		

- Molecule 3 is S-ADENOSYLMETHIONINE (three-letter code: SAM) (formula: C₁₅H₂₂N₆O₅S).

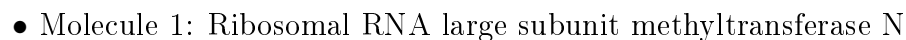


Mol	Chain	Residues	Atoms					ZeroOcc	AltConf
3	A	1	Total	C	N	O	S	0	0
			27	15	6	5	1		
3	B	1	Total	C	N	O	S	0	0
			27	15	6	5	1		

- Molecule 4 is water.

Mol	Chain	Residues	Atoms		ZeroOcc	AltConf
4	A	79	Total	O	0	0
			79	79		
4	B	102	Total	O	0	0
			102	102		

- Molecule 1: Ribosomal RNA large subunit methyltransferase N



4 Data and refinement statistics

Property	Value	Source
Space group	P 21 21 21	Depositor
Cell constants a, b, c, α , β , γ	55.18Å 55.62Å 252.18Å 90.00° 90.00° 90.00°	Depositor
Resolution (Å)	30.00 – 2.05 28.66 – 2.05	Depositor EDS
% Data completeness (in resolution range)	95.8 (30.00-2.05) 95.9 (28.66-2.05)	Depositor EDS
R_{merge}	(Not available)	Depositor
R_{sym}	(Not available)	Depositor
$\langle I/\sigma(I) \rangle$ ¹	2.21 (at 2.04Å)	Xtriage
Refinement program	REFMAC 5.5.0109	Depositor
R, R_{free}	0.202 , 0.241 0.204 , 0.244	Depositor DCC
R_{free} test set	2417 reflections (5.32%)	DCC
Wilson B-factor (Å ²)	28.8	Xtriage
Anisotropy	0.068	Xtriage
Bulk solvent k_{sol} (e/Å ³), B_{sol} (Å ²)	0.37 , 41.8	EDS
Estimated twinning fraction	0.049 for k,h,-l	Xtriage
L-test for twinning ²	$\langle L \rangle = 0.47$, $\langle L^2 \rangle = 0.29$	Xtriage
Outliers	0 of 47878 reflections	Xtriage
F_o, F_c correlation	0.94	EDS
Total number of atoms	5714	wwPDB-VP
Average B, all atoms (Å ²)	29.0	wwPDB-VP

Xtriage's analysis on translational NCS is as follows: *The largest off-origin peak in the Patterson function is 4.25% of the height of the origin peak. No significant pseudotranslation is detected.*

¹Intensities estimated from amplitudes.

²Theoretical values of $\langle |L| \rangle$, $\langle L^2 \rangle$ for acentric reflections are 0.5, 0.375 respectively for untwinned datasets, and 0.333, 0.2 for perfectly twinned datasets.

5 Model quality

5.1 Standard geometry

Bond lengths and bond angles in the following residue types are not validated in this section: SF4, SMC, SAM

The Z score for a bond length (or angle) is the number of standard deviations the observed value is removed from the expected value. A bond length (or angle) with $|Z| > 5$ is considered an outlier worth inspection. RMSZ is the root-mean-square of all Z scores of the bond lengths (or angles).

Mol	Chain	Bond lengths		Bond angles	
		RMSZ	# Z >5	RMSZ	# Z >5
1	A	0.37	0/2676	0.52	0/3616
1	B	0.37	0/2871	0.52	0/3874
All	All	0.37	0/5547	0.52	0/7490

There are no bond length outliers.

There are no bond angle outliers.

There are no chirality outliers.

There are no planarity outliers.

5.2 Too-close contacts

In the following table, the Non-H and H(model) columns list the number of non-hydrogen atoms and hydrogen atoms in the chain respectively. The H(added) column lists the number of hydrogen atoms added and optimized by MolProbity. The Clashes column lists the number of clashes within the asymmetric unit, whereas Symm-Clashes lists symmetry related clashes.

Mol	Chain	Non-H	H(model)	H(added)	Clashes	Symm-Clashes
1	A	2630	0	2645	16	0
1	B	2833	0	2859	12	0
2	A	8	0	0	0	0
2	B	8	0	0	0	0
3	A	27	0	21	0	0
3	B	27	0	21	0	0
4	A	79	0	0	3	0
4	B	102	0	0	0	1
All	All	5714	0	5546	28	1

The all-atom clashscore is defined as the number of clashes found per 1000 atoms (including hydrogen atoms). The all-atom clashscore for this structure is 3.

The worst 5 of 28 close contacts within the same asymmetric unit are listed below, sorted by their clash magnitude.

Atom-1	Atom-2	Interatomic distance (Å)	Clash overlap (Å)
1:B:57:PHE:O	1:B:68:ARG:HD3	1.97	0.64
1:A:128:GLU:HA	1:A:135:ALA:HB1	1.80	0.61
1:B:133:SER:O	1:B:136:GLN:HG2	2.03	0.59
1:A:235:HIS:CE1	1:A:280:VAL:HG23	2.45	0.52
1:B:128:GLU:HA	1:B:135:ALA:HB1	1.93	0.51

All (1) symmetry-related close contacts are listed below. The label for Atom-2 includes the symmetry operator and encoded unit-cell translations to be applied.

Atom-1	Atom-2	Interatomic distance (Å)	Clash overlap (Å)
4:B:465:HOH:O	4:B:486:HOH:O[3_544]	2.18	0.02

5.3 Torsion angles [i](#)

5.3.1 Protein backbone [i](#)

In the following table, the Percentiles column shows the percent Ramachandran outliers of the chain as a percentile score with respect to all X-ray entries followed by that with respect to entries of similar resolution.

The Analysed column shows the number of residues for which the backbone conformation was analysed, and the total number of residues.

Mol	Chain	Analysed	Favoured	Allowed	Outliers	Percentiles	
1	A	331/404 (82%)	323 (98%)	8 (2%)	0	100	100
1	B	356/404 (88%)	348 (98%)	8 (2%)	0	100	100
All	All	687/808 (85%)	671 (98%)	16 (2%)	0	100	100

There are no Ramachandran outliers to report.

5.3.2 Protein sidechains [i](#)

In the following table, the Percentiles column shows the percent sidechain outliers of the chain as a percentile score with respect to all X-ray entries followed by that with respect to entries of similar resolution.

The Analysed column shows the number of residues for which the sidechain conformation was analysed, and the total number of residues.

Mol	Chain	Analysed	Rotameric	Outliers	Percentiles	
1	A	289/346 (84%)	276 (96%)	13 (4%)	34	25
1	B	309/346 (89%)	297 (96%)	12 (4%)	39	30
All	All	598/692 (86%)	573 (96%)	25 (4%)	36	28

5 of 25 residues with a non-rotameric sidechain are listed below:

Mol	Chain	Res	Type
1	A	312	ASN
1	B	35	LEU
1	B	302	THR
1	A	341	THR
1	B	64	ASN

Some sidechains can be flipped to improve hydrogen bonding and reduce clashes. 5 of 7 such sidechains are listed below:

Mol	Chain	Res	Type
1	B	102	GLN
1	B	375	GLN
1	B	307	ASN
1	A	64	ASN
1	B	357	GLN

5.3.3 RNA ⓘ

There are no RNA molecules in this entry.

5.4 Non-standard residues in protein, DNA, RNA chains ⓘ

1 non-standard protein/DNA/RNA residue is modelled in this entry.

In the following table, the Counts columns list the number of bonds (or angles) for which Mogul statistics could be retrieved, the number of bonds (or angles) that are observed in the model and the number of bonds (or angles) that are defined in the chemical component dictionary. The Link column lists molecule types, if any, to which the group is linked. The Z score for a bond length (or angle) is the number of standard deviations the observed value is removed from the expected value. A bond length (or angle) with $|Z| > 2$ is considered an outlier worth inspection. RMSZ is the root-mean-square of all Z scores of the bond lengths (or angles).

Mol	Type	Chain	Res	Link	Bond lengths			Bond angles		
					Counts	RMSZ	$\# Z > 2$	Counts	RMSZ	$\# Z > 2$
1	SMC	B	355	1	5,6,7	1.60	1 (20%)	2,6,8	3.84	1 (50%)

In the following table, the Chirals column lists the number of chiral outliers, the number of chiral centers analysed, the number of these observed in the model and the number defined in the chemical component dictionary. Similar counts are reported in the Torsion and Rings columns. '-' means no outliers of that kind were identified.

Mol	Type	Chain	Res	Link	Chirals	Torsions	Rings
1	SMC	B	355	1	-	0/3/5/7	0/0/0/0

All (1) bond length outliers are listed below:

Mol	Chain	Res	Type	Atoms	Z	Observed(Å)	Ideal(Å)
1	B	355	SMC	CB-SG	-3.45	1.76	1.80

All (1) bond angle outliers are listed below:

Mol	Chain	Res	Type	Atoms	Z	Observed(°)	Ideal(°)
1	B	355	SMC	CS-SG-CB	5.10	109.50	101.21

There are no chirality outliers.

There are no torsion outliers.

There are no ring outliers.

No monomer is involved in short contacts.

5.5 Carbohydrates [i](#)

There are no carbohydrates in this entry.

5.6 Ligand geometry [i](#)

4 ligands are modelled in this entry.

In the following table, the Counts columns list the number of bonds (or angles) for which Mogul statistics could be retrieved, the number of bonds (or angles) that are observed in the model and the number of bonds (or angles) that are defined in the chemical component dictionary. The Link column lists molecule types, if any, to which the group is linked. The Z score for a bond length (or angle) is the number of standard deviations the observed value is removed from the expected value. A bond length (or angle) with $|Z| > 2$ is considered an outlier worth inspection. RMSZ is the root-mean-square of all Z scores of the bond lengths (or angles).

Mol	Type	Chain	Res	Link	Bond lengths			Bond angles		
					Counts	RMSZ	$\# Z > 2$	Counts	RMSZ	$\# Z > 2$
2	SF4	A	405	1,3	0,12,12	0.00	-	0,24,24	0.00	-

Mol	Type	Chain	Res	Link	Bond lengths			Bond angles		
					Counts	RMSZ	# Z > 2	Counts	RMSZ	# Z > 2
3	SAM	A	406	2	21,29,29	1.16	2 (9%)	17,42,42	2.92	2 (11%)
2	SF4	B	405	1,3	0,12,12	0.00	-	0,24,24	0.00	-
3	SAM	B	406	2	21,29,29	1.14	2 (9%)	17,42,42	3.08	1 (5%)

In the following table, the Chirals column lists the number of chiral outliers, the number of chiral centers analysed, the number of these observed in the model and the number defined in the chemical component dictionary. Similar counts are reported in the Torsion and Rings columns. '-' means no outliers of that kind were identified.

Mol	Type	Chain	Res	Link	Chirals	Torsions	Rings
2	SF4	A	405	1,3	-	0/0/48/48	0/6/5/5
3	SAM	A	406	2	-	0/8/33/33	0/3/3/3
2	SF4	B	405	1,3	-	0/0/48/48	0/6/5/5
3	SAM	B	406	2	-	0/8/33/33	0/3/3/3

All (4) bond length outliers are listed below:

Mol	Chain	Res	Type	Atoms	Z	Observed(Å)	Ideal(Å)
3	A	406	SAM	C2-N1	2.57	1.38	1.33
3	B	406	SAM	C2-N1	2.61	1.38	1.33
3	B	406	SAM	C2-N3	3.59	1.38	1.32
3	A	406	SAM	C2-N3	3.84	1.39	1.32

All (3) bond angle outliers are listed below:

Mol	Chain	Res	Type	Atoms	Z	Observed(°)	Ideal(°)
3	B	406	SAM	N3-C2-N1	-12.20	119.56	128.89
3	A	406	SAM	N3-C2-N1	-11.37	120.19	128.89
3	A	406	SAM	O4'-C1'-N9	2.34	113.00	108.10

There are no chirality outliers.

There are no torsion outliers.

There are no ring outliers.

No monomer is involved in short contacts.

5.7 Other polymers

There are no such residues in this entry.

5.8 Polymer linkage issues ⓘ

There are no chain breaks in this entry.

6 Fit of model and data [i](#)

6.1 Protein, DNA and RNA chains [i](#)

In the following table, the column labelled ‘#RSRZ> 2’ contains the number (and percentage) of RSRZ outliers, followed by percent RSRZ outliers for the chain as percentile scores relative to all X-ray entries and entries of similar resolution. The OWAB column contains the minimum, median, 95th percentile and maximum values of the occupancy-weighted average B-factor per residue. The column labelled ‘Q< 0.9’ lists the number of (and percentage) of residues with an average occupancy less than 0.9.

Mol	Chain	Analysed	<RSRZ>	#RSRZ>2	OWAB(Å ²)	Q<0.9
1	A	333/404 (82%)	0.46	23 (6%) 20 23	18, 29, 43, 54	0
1	B	358/404 (88%)	0.29	13 (3%) 46 53	16, 28, 47, 59	0
All	All	691/808 (85%)	0.37	36 (5%) 31 36	16, 29, 45, 59	0

The worst 5 of 36 RSRZ outliers are listed below:

Mol	Chain	Res	Type	RSRZ
1	B	362	VAL	5.7
1	B	353	ALA	5.3
1	A	113	ASP	4.7
1	B	112	ASP	4.7
1	A	89	SER	4.0

6.2 Non-standard residues in protein, DNA, RNA chains [i](#)

In the following table, the Atoms column lists the number of modelled atoms in the group and the number defined in the chemical component dictionary. LLDF column lists the quality of electron density of the group with respect to its neighbouring residues in protein, DNA or RNA chains. The B-factors column lists the minimum, median, 95th percentile and maximum values of B factors of atoms in the group. The column labelled ‘Q< 0.9’ lists the number of atoms with occupancy less than 0.9.

Mol	Type	Chain	Res	Atoms	RSCC	RSR	LLDF	B-factors(Å ²)	Q<0.9
1	SMC	B	355	7/8	0.83	0.18	-	51,51,52,52	0

6.3 Carbohydrates [i](#)

There are no carbohydrates in this entry.

6.4 Ligands [i](#)

In the following table, the Atoms column lists the number of modelled atoms in the group and the number defined in the chemical component dictionary. LLDF column lists the quality of electron density of the group with respect to its neighbouring residues in protein, DNA or RNA chains. The B-factors column lists the minimum, median, 95th percentile and maximum values of B factors of atoms in the group. The column labelled 'Q< 0.9' lists the number of atoms with occupancy less than 0.9.

Mol	Type	Chain	Res	Atoms	RSCC	RSR	LLDF	B-factors(\AA^2)	Q<0.9
3	SAM	B	406	27/27	0.96	0.17	0.08	22,24,26,28	0
3	SAM	A	406	27/27	0.94	0.14	-0.92	26,29,30,32	0
2	SF4	B	405	8/8	0.99	0.10	-1.28	21,21,22,23	0
2	SF4	A	405	8/8	0.99	0.09	-1.30	26,27,27,29	0

6.5 Other polymers [i](#)

There are no such residues in this entry.