



Full wwPDB X-ray Structure Validation Report ⓘ

Feb 1, 2016 – 08:18 PM GMT

PDB ID : 4RHU
Title : Crystal structures of Mycobacterium tuberculosis 6-oxopurine phosphoribosyltransferase which is a potential target for drug development against this disease
Authors : Eng, W.S.; Hockova, D.; Spacek, P.; West, N.P.; Woods, K.; Naesens, L.M.J.; Keough, D.T.; Guddat, L.W.
Deposited on : 2014-10-03
Resolution : 2.57 Å(reported)

This is a Full wwPDB X-ray Structure Validation Report for a publicly released PDB entry.
We welcome your comments at validation@mail.wwpdb.org
A user guide is available at
<http://wwpdb.org/validation/2016/XrayValidationReportHelp>
with specific help available everywhere you see the ⓘ symbol.

The following versions of software and data (see [references ⓘ](#)) were used in the production of this report:

MolProbity : 4.02b-467
Mogul : 1.7 (RC4), CSD as536be (2015)
Xtriage (Phenix) : 1.9-1692
EDS : rb-20026688
Percentile statistics : 20151230.v01 (using entries in the PDB archive December 30th 2015)
Refmac : 5.8.0135
CCP4 : 6.5.0
Ideal geometry (proteins) : Engh & Huber (2001)
Ideal geometry (DNA, RNA) : Parkinson et al. (1996)
Validation Pipeline (wwPDB-VP) : trunk26865

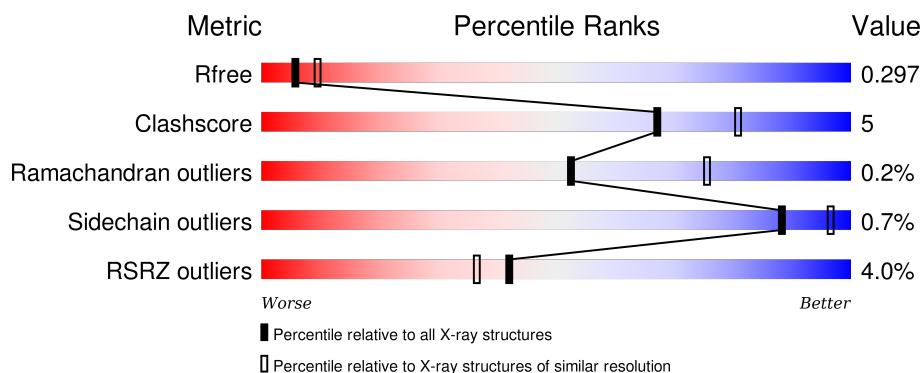
1 Overall quality at a glance

The following experimental techniques were used to determine the structure:

X-RAY DIFFRACTION

The reported resolution of this entry is 2.57 Å.

Percentile scores (ranging between 0-100) for global validation metrics of the entry are shown in the following graphic. The table shows the number of entries on which the scores are based.




Metric	Whole archive (#Entries)	Similar resolution (#Entries, resolution range(Å))
R_{free}	91344	2636 (2.60-2.56)
Clashscore	102246	3003 (2.60-2.56)
Ramachandran outliers	100387	2956 (2.60-2.56)
Sidechain outliers	100360	2956 (2.60-2.56)
RSRZ outliers	91569	2642 (2.60-2.56)

The table below summarises the geometric issues observed across the polymeric chains and their fit to the electron density. The red, orange, yellow and green segments on the lower bar indicate the fraction of residues that contain outliers for ≥ 3 , 2, 1 and 0 types of geometric quality criteria. A grey segment represents the fraction of residues that are not modelled. The numeric value for each fraction is indicated below the corresponding segment, with a dot representing fractions $\leq 5\%$. The upper red bar (where present) indicates the fraction of residues that have poor fit to the electron density. The numeric value is given above the bar.

Mol	Chain	Length	Quality of chain
1	A	201	<div> <div>2%</div> <div>82% 8% 10%</div> </div>
1	B	201	<div> <div>3%</div> <div>80% 9% 11%</div> </div>
1	C	201	<div> <div>%</div> <div>78% 9% 13%</div> </div>
1	D	201	<div> <div>5%</div> <div>72% 11% 16%</div> </div>
1	E	201	<div> <div>4%</div> <div>68% 15% 16%</div> </div>

Continued on next page...

Continued from previous page...

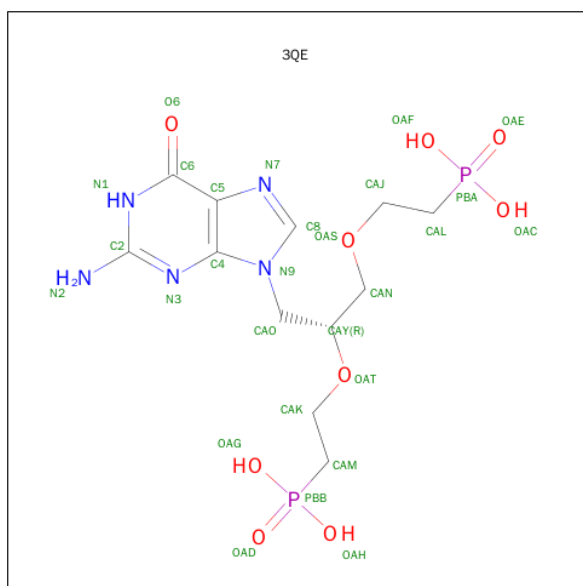
Mol	Chain	Length	Quality of chain
1	F	201	 <p>A horizontal bar chart showing the quality of chain F. The bar is divided into four segments: a small red segment at the beginning labeled '5%', a large green segment labeled '74%', a yellow segment labeled '12%', and a small grey segment at the end labeled '14%'.</p>

In the tables below, the ZeroOcc column contains the number of atoms modelled with zero occupancy, the AltConf column contains the number of residues with at least one atom in alternate conformation and the Trace column contains the number of residues modelled with at most 2 atoms.

- Molecule 1 is a protein called Hypoxanthine-guanine phosphoribosyltransferase Hpt.

Mol	Chain	Residues	Atoms					ZeroOcc	AltConf	Trace
1	A	180	Total 1417	C 901	N 240	O 274	S 2	0	0	0
1	B	178	Total 1396	C 891	N 234	O 269	S 2	0	0	0
1	C	175	Total 1361	C 867	N 233	O 259	S 2	0	0	0
1	D	168	Total 1320	C 838	N 226	O 254	S 2	0	0	0
1	E	169	Total 1335	C 851	N 228	O 254	S 2	0	0	0
1	F	172	Total 1369	C 874	N 234	O 259	S 2	0	0	0

- Molecule 2 is {[(2R)-3-(2-AMINO-6-OXO-1,6-DIHYDRO-9H-PURIN-9-YL)PROPANE-1,2-DIYL]BIS(OXYETHANE-2,1-DIYL)}BIS(PHOSPHONIC ACID) (three-letter code: 3QE) (formula: C₁₂H₂₁N₅O₉P₂).

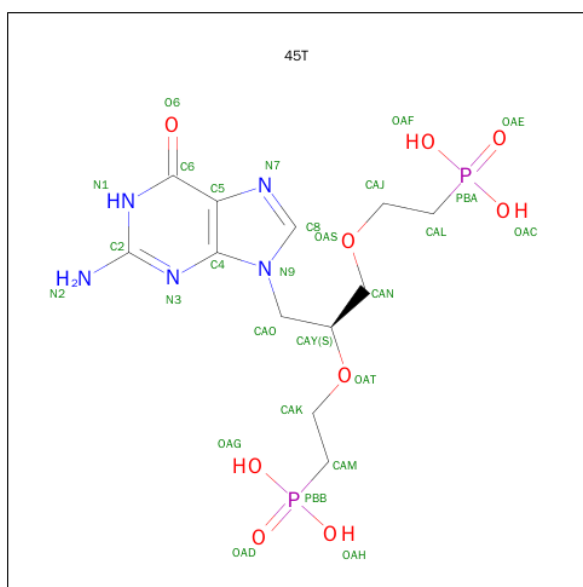


Mol	Chain	Residues	Atoms					ZeroOcc	AltConf
2	A	1	Total	C	N	O	P	0	0
			28	12	5	9	2		
2	B	1	Total	C	N	O	P	0	0
			28	12	5	9	2		

- Molecule 3 is MAGNESIUM ION (three-letter code: MG) (formula: Mg).

Mol	Chain	Residues	Atoms		ZeroOcc	AltConf
3	D	1	Total	Mg	0	0
			1	1		
3	E	1	Total	Mg	0	0
			1	1		
3	B	2	Total	Mg	0	0
			2	2		
3	C	1	Total	Mg	0	0
			1	1		
3	A	1	Total	Mg	0	0
			1	1		
3	F	2	Total	Mg	0	0
			2	2		

- Molecule 4 is {[(2S)-3-(2-AMINO-6-OXO-1,6-DIHYDRO-9H-PURIN-9-YL)PROPANE-1,2-DIYL]BIS(OXYETHANE-2,1-DIYL)}BIS(PHOSPHONIC ACID) (three-letter code: 45T) (formula: C₁₂H₂₁N₅O₉P₂).



Mol	Chain	Residues	Atoms					ZeroOcc	AltConf
4	C	1	Total	C	N	O	P	0	0
			28	12	5	9	2		

Continued on next page...

Continued from previous page...

Mol	Chain	Residues	Atoms					ZeroOcc	AltConf
4	D	1	Total	C	N	O	P	0	0
			28	12	5	9	2		
4	E	1	Total	C	N	O	P	0	0
			28	12	5	9	2		
4	F	1	Total	C	N	O	P	0	0
			28	12	5	9	2		

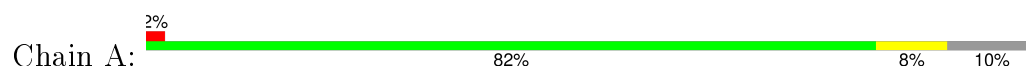
- Molecule 5 is water.

Mol	Chain	Residues	Atoms		ZeroOcc	AltConf
5	A	16	Total	O	0	0
			16	16		
5	B	16	Total	O	0	0
			16	16		
5	C	22	Total	O	0	0
			22	22		
5	D	7	Total	O	0	0
			7	7		
5	E	10	Total	O	0	0
			10	10		
5	F	13	Total	O	0	0
			13	13		

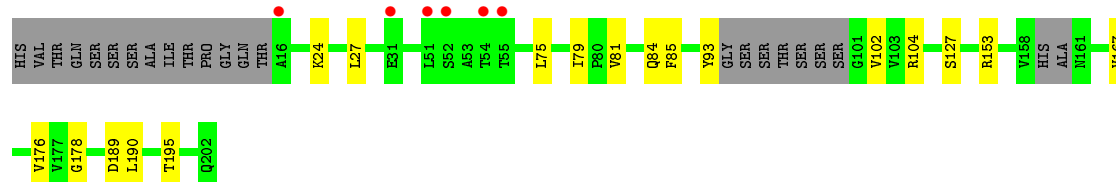
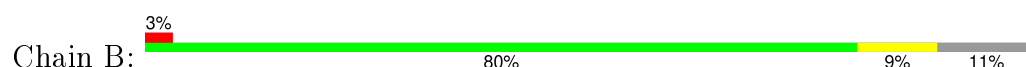
3 Residue-property plots [i](#)

These plots are drawn for all protein, RNA and DNA chains in the entry. The first graphic for a chain summarises the proportions of errors displayed in the second graphic. The second graphic shows the sequence view annotated by issues in geometry and electron density. Residues are color-coded according to the number of geometric quality criteria for which they contain at least one outlier: green = 0, yellow = 1, orange = 2 and red = 3 or more. A red dot above a residue indicates a poor fit to the electron density ($RSRZ > 2$). Stretches of 2 or more consecutive residues without any outlier are shown as a green connector. Residues present in the sample, but not in the model, are shown in grey.

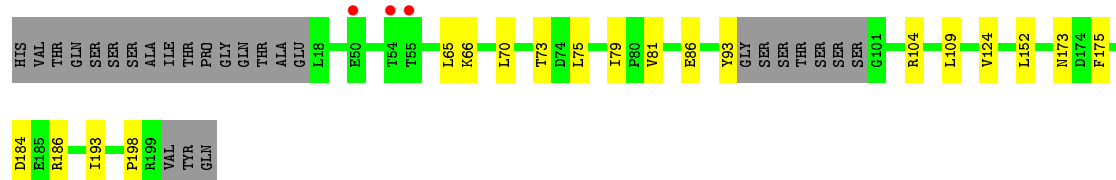
- Molecule 1: Hypoxanthine-guanine phosphoribosyltransferase Hpt



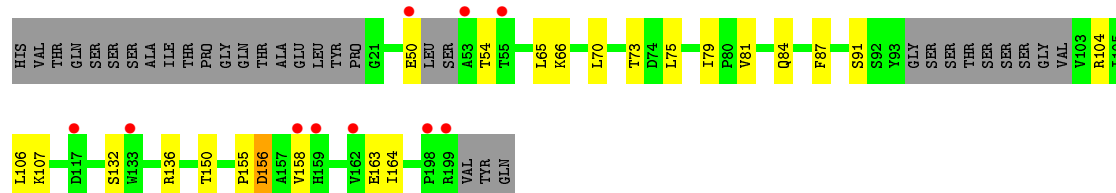
- Molecule 1: Hypoxanthine-guanine phosphoribosyltransferase Hpt



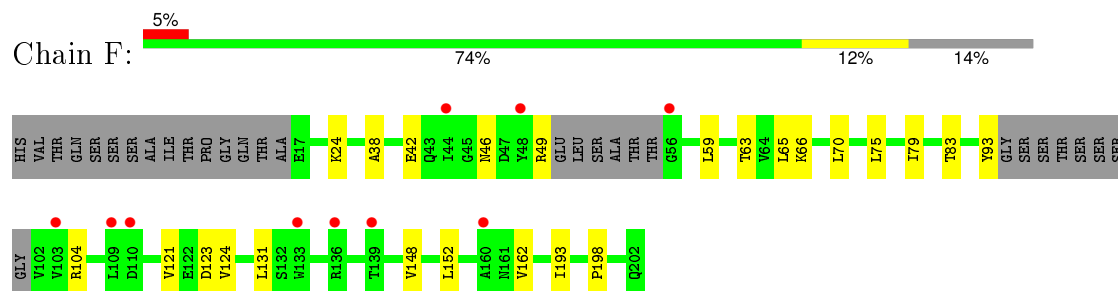
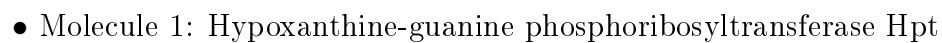
- Molecule 1: Hypoxanthine-guanine phosphoribosyltransferase Hpt



- Molecule 1: Hypoxanthine-guanine phosphoribosyltransferase Hpt



- Molecule 1: Hypoxanthine-guanine phosphoribosyltransferase Hpt



4 Data and refinement statistics

Property	Value	Source
Space group	P 65	Depositor
Cell constants a, b, c, α , β , γ	94.69Å 94.69Å 335.52Å 90.00° 90.00° 120.00°	Depositor
Resolution (Å)	47.35 – 2.57 47.35 – 2.57	Depositor EDS
% Data completeness (in resolution range)	99.8 (47.35-2.57) 96.6 (47.35-2.57)	Depositor EDS
R_{merge}	(Not available)	Depositor
R_{sym}	(Not available)	Depositor
$\langle I/\sigma(I) \rangle$ ¹	2.50 (at 2.58Å)	Xtriage
Refinement program	PHENIX (phenix.refine: 1.9_1692)	Depositor
R, R_{free}	0.230 , 0.298 0.243 , 0.297	Depositor DCC
R_{free} test set	1979 reflections (3.96%)	DCC
Wilson B-factor (Å ²)	52.3	Xtriage
Anisotropy	0.365	Xtriage
Bulk solvent k_{sol} (e/Å ³), B_{sol} (Å ²)	0.35 , 50.0	EDS
Estimated twinning fraction	0.081 for h,-h-k,-l	Xtriage
L-test for twinning ²	$\langle L \rangle = 0.45$, $\langle L^2 \rangle = 0.28$	Xtriage
Outliers	0 of 53589 reflections	Xtriage
F_o, F_c correlation	0.91	EDS
Total number of atoms	8458	wwPDB-VP
Average B, all atoms (Å ²)	67.0	wwPDB-VP

Xtriage's analysis on translational NCS is as follows: *The largest off-origin peak in the Patterson function is 3.64% of the height of the origin peak. No significant pseudotranslation is detected.*

¹Intensities estimated from amplitudes.

²Theoretical values of $\langle |L| \rangle$, $\langle L^2 \rangle$ for acentric reflections are 0.5, 0.375 respectively for untwinned datasets, and 0.333, 0.2 for perfectly twinned datasets.

5 Model quality

5.1 Standard geometry

Bond lengths and bond angles in the following residue types are not validated in this section: MG, 45T, 3QE

The Z score for a bond length (or angle) is the number of standard deviations the observed value is removed from the expected value. A bond length (or angle) with $|Z| > 5$ is considered an outlier worth inspection. RMSZ is the root-mean-square of all Z scores of the bond lengths (or angles).

Mol	Chain	Bond lengths		Bond angles	
		RMSZ	$\# Z > 5$	RMSZ	$\# Z > 5$
1	A	0.23	0/1439	0.39	0/1957
1	B	0.21	0/1417	0.38	0/1927
1	C	0.22	0/1383	0.41	0/1883
1	D	0.23	0/1339	0.41	0/1819
1	E	0.23	0/1356	0.42	0/1843
1	F	0.23	0/1391	0.42	0/1890
All	All	0.22	0/8325	0.41	0/11319

There are no bond length outliers.

There are no bond angle outliers.

There are no chirality outliers.

There are no planarity outliers.

5.2 Too-close contacts

In the following table, the Non-H and H(model) columns list the number of non-hydrogen atoms and hydrogen atoms in the chain respectively. The H(added) column lists the number of hydrogen atoms added and optimized by MolProbity. The Clashes column lists the number of clashes within the asymmetric unit, whereas Symm-Clashes lists symmetry related clashes.

Mol	Chain	Non-H	H(model)	H(added)	Clashes	Symm-Clashes
1	A	1417	0	1415	11	0
1	B	1396	0	1400	12	0
1	C	1361	0	1363	13	0
1	D	1320	0	1324	15	0
1	E	1335	0	1341	17	0
1	F	1369	0	1378	14	0
2	A	28	0	19	1	0

Continued on next page...

Continued from previous page...

Mol	Chain	Non-H	H(model)	H(added)	Clashes	Symm-Clashes
2	B	28	0	19	1	0
3	A	1	0	0	0	0
3	B	2	0	0	0	0
3	C	1	0	0	0	0
3	D	1	0	0	0	0
3	E	1	0	0	0	0
3	F	2	0	0	0	0
4	C	28	0	19	0	0
4	D	28	0	19	2	0
4	E	28	0	19	3	0
4	F	28	0	18	0	0
5	A	16	0	0	0	0
5	B	16	0	0	0	0
5	C	22	0	0	1	0
5	D	7	0	0	0	0
5	E	10	0	0	0	0
5	F	13	0	0	0	0
All	All	8458	0	8334	80	0

The all-atom clashscore is defined as the number of clashes found per 1000 atoms (including hydrogen atoms). The all-atom clashscore for this structure is 5.

All (80) close contacts within the same asymmetric unit are listed below, sorted by their clash magnitude.

Atom-1	Atom-2	Interatomic distance (Å)	Clash overlap (Å)
1:A:110:ASP:HA	1:D:104:ARG:HH12	1.49	0.77
1:E:46:ASN:OD1	1:E:49:ARG:NH2	2.18	0.76
1:D:132:SER:OG	1:D:136:ARG:NH2	2.22	0.71
1:F:46:ASN:OD1	1:F:49:ARG:NH2	2.26	0.69
1:E:153:ARG:HD3	1:E:158:VAL:HG12	1.76	0.67
1:F:24:LYS:HZ2	1:F:198:PRO:HD2	1.58	0.67
4:E:301:45T:H17	4:E:301:45T:H5	1.77	0.67
1:A:62:ILE:HG12	1:A:86:GLU:HB2	1.77	0.66
1:D:87:PHE:O	1:D:107:LYS:NZ	2.28	0.66
1:E:60:LEU:HD12	1:E:84:GLN:HB2	1.77	0.65
1:A:60:LEU:HD11	1:A:86:GLU:HG2	1.82	0.62
1:C:173:ASN:ND2	5:C:402:HOH:O	2.29	0.60
4:D:301:45T:H21	4:D:301:45T:H11	1.82	0.60
1:E:63:THR:HG22	1:E:121:VAL:HB	1.82	0.59
1:A:86:GLU:OE2	1:A:111:ARG:NE	2.33	0.57
1:B:93:TYR:HD2	1:B:102:VAL:HG12	1.70	0.56

Continued on next page...

Continued from previous page...

Atom-1	Atom-2	Interatomic distance (Å)	Clash overlap (Å)
1:A:27:LEU:H	1:A:194:GLY:HA2	1.71	0.55
1:D:156:ASP:N	1:D:156:ASP:OD1	2.40	0.54
4:E:301:45T:H11	4:E:301:45T:H21	1.91	0.53
1:A:93:TYR:CZ	1:A:104:ARG:HB3	2.43	0.52
1:E:197:ASP:OD1	1:E:199:ARG:HG2	2.10	0.52
1:C:73:THR:HB	1:D:70:LEU:HD13	1.92	0.52
1:C:124:VAL:HG22	1:C:152:LEU:HB2	1.92	0.52
1:A:66:LYS:NZ	1:B:85:PHE:O	2.42	0.52
1:F:63:THR:HG22	1:F:121:VAL:HB	1.93	0.50
1:D:50:GLU:N	1:D:50:GLU:OE1	2.43	0.50
1:D:91:SER:HB3	1:D:104:ARG:HD3	1.92	0.50
1:C:70:LEU:HD13	1:D:73:THR:HB	1.94	0.49
1:F:59:LEU:HB3	1:F:83:THR:HG22	1.93	0.49
1:B:127:SER:N	2:B:301:3QE:OAG	2.45	0.47
1:A:186:ARG:HG2	1:B:84:GLN:HE21	1.79	0.47
1:D:150:THR:HG22	1:D:164:ILE:HG21	1.96	0.47
1:E:153:ARG:HD2	1:E:170:ASP:OD1	2.13	0.47
1:B:24:LYS:HG2	1:B:195:THR:OG1	2.15	0.47
1:D:155:PRO:HA	1:D:158:VAL:HG12	1.96	0.47
1:E:124:VAL:HG22	1:E:152:LEU:HB2	1.96	0.47
2:A:301:3QE:H16	2:A:301:3QE:H11	1.31	0.47
1:F:38:ALA:O	1:F:42:GLU:HG3	2.15	0.47
1:B:27:LEU:HD22	1:B:176:VAL:HG11	1.96	0.46
1:E:152:LEU:HD11	1:E:193:ILE:HD13	1.98	0.46
1:F:124:VAL:HG22	1:F:152:LEU:HB2	1.98	0.46
1:F:131:LEU:HG	1:F:162:VAL:HG11	1.98	0.46
1:D:65:LEU:HA	1:D:66:LYS:HA	1.61	0.45
1:B:93:TYR:CZ	1:B:104:ARG:HB2	2.51	0.45
1:F:152:LEU:HD11	1:F:193:ILE:HD13	1.98	0.45
1:B:153:ARG:HH11	1:B:167:VAL:HG21	1.82	0.45
1:E:91:SER:OG	1:E:92:SER:N	2.49	0.45
1:C:79:ILE:HG22	1:C:81:VAL:HG22	1.98	0.45
1:B:189:ASP:N	1:B:189:ASP:OD1	2.50	0.45
1:F:93:TYR:CE1	1:F:104:ARG:HB2	2.53	0.44
1:C:65:LEU:HA	1:C:66:LYS:HA	1.63	0.44
1:B:75:LEU:O	1:B:79:ILE:HG13	2.18	0.44
1:E:59:LEU:HD23	1:E:83:THR:HG22	1.99	0.44
1:B:79:ILE:HG22	1:B:81:VAL:HG22	2.00	0.43
1:F:65:LEU:HA	1:F:66:LYS:HA	1.66	0.43
1:C:75:LEU:O	1:C:79:ILE:HG13	2.18	0.43
1:C:93:TYR:CZ	1:C:104:ARG:HB2	2.53	0.43

Continued on next page...

Continued from previous page...

Atom-1	Atom-2	Interatomic distance (Å)	Clash overlap (Å)
1:E:73:THR:HB	1:F:70:LEU:HD13	2.01	0.43
1:C:152:LEU:HD11	1:C:193:ILE:HD13	2.00	0.43
1:E:65:LEU:HA	1:E:66:LYS:HA	1.62	0.42
1:D:79:ILE:HG22	1:D:81:VAL:H	1.84	0.42
1:A:152:LEU:HD11	1:A:193:ILE:HD13	2.02	0.42
1:A:65:LEU:HA	1:A:66:LYS:HA	1.63	0.41
1:C:86:GLU:HB3	1:C:109:LEU:HD22	2.02	0.41
1:D:75:LEU:O	1:D:79:ILE:HG13	2.20	0.41
1:C:184:ASP:O	1:C:186:ARG:HG3	2.20	0.41
1:E:31:GLU:CD	1:E:31:GLU:H	2.23	0.41
1:A:199:ARG:HA	1:A:202:GLN:NE2	2.34	0.41
1:F:131:LEU:HD21	1:F:148:VAL:HG11	2.02	0.41
1:C:186:ARG:HG2	1:D:84:GLN:HE21	1.86	0.41
1:C:175:PHE:HB2	1:E:198:PRO:HG2	2.03	0.41
1:E:79:ILE:HG22	1:E:81:VAL:H	1.86	0.41
4:D:301:45T:H11	4:D:301:45T:C8	2.50	0.41
4:E:301:45T:CAO	4:E:301:45T:H5	2.49	0.40
1:E:135:SER:O	1:E:139:THR:OG1	2.31	0.40
1:B:178:GLY:HA2	1:B:190:LEU:HB2	2.03	0.40
1:D:106:LEU:HA	1:D:106:LEU:HD12	1.80	0.40
1:F:75:LEU:O	1:F:79:ILE:HG13	2.22	0.40
1:F:123:ASP:N	1:F:123:ASP:OD1	2.47	0.40
1:E:108:ASP:OD1	1:E:109:LEU:N	2.45	0.40

There are no symmetry-related clashes.

5.3 Torsion angles [i](#)

5.3.1 Protein backbone [i](#)

In the following table, the Percentiles column shows the percent Ramachandran outliers of the chain as a percentile score with respect to all X-ray entries followed by that with respect to entries of similar resolution.

The Analysed column shows the number of residues for which the backbone conformation was analysed, and the total number of residues.

Mol	Chain	Analysed	Favoured	Allowed	Outliers	Percentiles	
1	A	174/201 (87%)	169 (97%)	5 (3%)	0	100	100
1	B	172/201 (86%)	165 (96%)	7 (4%)	0	100	100

Continued on next page...

Continued from previous page...

Mol	Chain	Analysed	Favoured	Allowed	Outliers	Percentiles	
1	C	171/201 (85%)	165 (96%)	5 (3%)	1 (1%)	30	54
1	D	162/201 (81%)	155 (96%)	7 (4%)	0	100	100
1	E	163/201 (81%)	157 (96%)	5 (3%)	1 (1%)	30	54
1	F	166/201 (83%)	160 (96%)	6 (4%)	0	100	100
All	All	1008/1206 (84%)	971 (96%)	35 (4%)	2 (0%)	52	75

All (2) Ramachandran outliers are listed below:

Mol	Chain	Res	Type
1	C	198	PRO
1	E	161	ASN

5.3.2 Protein sidechains ⓘ

In the following table, the Percentiles column shows the percent sidechain outliers of the chain as a percentile score with respect to all X-ray entries followed by that with respect to entries of similar resolution.

The Analysed column shows the number of residues for which the sidechain conformation was analysed, and the total number of residues.

Mol	Chain	Analysed	Rotameric	Outliers	Percentiles	
1	A	156/174 (90%)	156 (100%)	0	100	100
1	B	153/174 (88%)	153 (100%)	0	100	100
1	C	148/174 (85%)	148 (100%)	0	100	100
1	D	145/174 (83%)	142 (98%)	3 (2%)	61	84
1	E	147/174 (84%)	144 (98%)	3 (2%)	63	84
1	F	151/174 (87%)	151 (100%)	0	100	100
All	All	900/1044 (86%)	894 (99%)	6 (1%)	88	96

All (6) residues with a non-rotameric sidechain are listed below:

Mol	Chain	Res	Type
1	D	54	THR
1	D	156	ASP
1	D	163	GLU
1	E	119	LEU
1	E	161	ASN

Continued on next page...

Continued from previous page...

Mol	Chain	Res	Type
1	E	202	GLN

Some sidechains can be flipped to improve hydrogen bonding and reduce clashes. All (3) such sidechains are listed below:

Mol	Chain	Res	Type
1	A	202	GLN
1	D	46	ASN
1	E	202	GLN

5.3.3 RNA [i](#)

There are no RNA molecules in this entry.

5.4 Non-standard residues in protein, DNA, RNA chains [i](#)

There are no non-standard protein/DNA/RNA residues in this entry.

5.5 Carbohydrates [i](#)

There are no carbohydrates in this entry.

5.6 Ligand geometry [i](#)

Of 14 ligands modelled in this entry, 8 are monoatomic - leaving 6 for Mogul analysis.

In the following table, the Counts columns list the number of bonds (or angles) for which Mogul statistics could be retrieved, the number of bonds (or angles) that are observed in the model and the number of bonds (or angles) that are defined in the chemical component dictionary. The Link column lists molecule types, if any, to which the group is linked. The Z score for a bond length (or angle) is the number of standard deviations the observed value is removed from the expected value. A bond length (or angle) with $|Z| > 2$ is considered an outlier worth inspection. RMSZ is the root-mean-square of all Z scores of the bond lengths (or angles).

Mol	Type	Chain	Res	Link	Bond lengths			Bond angles		
					Counts	RMSZ	# $ Z > 2$	Counts	RMSZ	# $ Z > 2$
2	3QE	A	301	-	24,29,29	5.11	10 (41%)	28,42,42	1.39	4 (14%)
2	3QE	B	301	3	24,29,29	5.07	9 (37%)	28,42,42	1.42	6 (21%)
4	45T	C	301	-	24,29,29	4.87	8 (33%)	28,42,42	1.43	5 (17%)
4	45T	D	301	-	24,29,29	5.19	10 (41%)	28,42,42	1.39	4 (14%)

Mol	Type	Chain	Res	Link	Bond lengths			Bond angles		
					Counts	RMSZ	# Z > 2	Counts	RMSZ	# Z > 2
4	45T	E	301	-	24,29,29	5.12	9 (37%)	28,42,42	1.39	5 (17%)
4	45T	F	301	3	24,29,29	5.11	9 (37%)	28,42,42	1.45	6 (21%)

In the following table, the Chirals column lists the number of chiral outliers, the number of chiral centers analysed, the number of these observed in the model and the number defined in the chemical component dictionary. Similar counts are reported in the Torsion and Rings columns. '-' means no outliers of that kind were identified.

Mol	Type	Chain	Res	Link	Chirals	Torsions	Rings
2	3QE	A	301	-	-	0/17/19/19	0/2/2/2
2	3QE	B	301	3	-	0/17/19/19	0/2/2/2
4	45T	C	301	-	-	0/17/19/19	0/2/2/2
4	45T	D	301	-	-	0/17/19/19	0/2/2/2
4	45T	E	301	-	-	0/17/19/19	0/2/2/2
4	45T	F	301	3	-	0/17/19/19	0/2/2/2

All (55) bond length outliers are listed below:

Mol	Chain	Res	Type	Atoms	Z	Observed(Å)	Ideal(Å)
4	C	301	45T	C8-N7	2.03	1.38	1.34
4	E	301	45T	C8-N7	2.06	1.38	1.34
2	A	301	3QE	CAO-CAY	2.06	1.64	1.51
4	E	301	45T	CAO-CAY	2.06	1.64	1.51
4	D	301	45T	C8-N7	2.07	1.38	1.34
2	A	301	3QE	C2-N1	2.08	1.39	1.35
2	A	301	3QE	C8-N7	2.14	1.38	1.34
2	B	301	3QE	C8-N7	2.17	1.38	1.34
4	D	301	45T	CAO-CAY	2.18	1.64	1.51
4	D	301	45T	C2-N1	2.23	1.39	1.35
4	F	301	45T	C2-N1	2.36	1.39	1.35
4	F	301	45T	C5-C4	2.36	1.45	1.40
2	B	301	3QE	C2-N1	2.39	1.39	1.35
2	A	301	3QE	C5-C4	2.40	1.45	1.40
4	F	301	45T	C8-N7	2.41	1.39	1.34
4	E	301	45T	C5-C4	2.43	1.46	1.40
2	B	301	3QE	C5-C4	2.48	1.46	1.40
4	C	301	45T	C5-C4	2.50	1.46	1.40
4	D	301	45T	C5-C4	2.51	1.46	1.40
4	C	301	45T	CAN-CAY	3.20	1.59	1.50
4	D	301	45T	CAN-CAY	3.33	1.60	1.50
2	B	301	3QE	CAN-CAY	3.36	1.60	1.50
4	E	301	45T	CAN-CAY	3.37	1.60	1.50

Continued on next page...

Continued from previous page...

Mol	Chain	Res	Type	Atoms	Z	Observed(Å)	Ideal(Å)
2	A	301	3QE	CAN-CAY	3.37	1.60	1.50
4	F	301	45T	CAN-CAY	3.42	1.60	1.50
4	F	301	45T	C2-N2	3.70	1.41	1.34
4	D	301	45T	C2-N2	3.73	1.41	1.34
4	E	301	45T	C2-N2	3.75	1.41	1.34
2	B	301	3QE	C2-N2	3.76	1.41	1.34
4	C	301	45T	C2-N2	3.77	1.41	1.34
2	A	301	3QE	C2-N2	3.82	1.41	1.34
2	B	301	3QE	O6-C6	5.13	1.37	1.24
4	F	301	45T	O6-C6	5.20	1.37	1.24
2	A	301	3QE	O6-C6	5.23	1.37	1.24
4	E	301	45T	O6-C6	5.28	1.37	1.24
4	C	301	45T	O6-C6	5.30	1.37	1.24
4	D	301	45T	O6-C6	5.34	1.37	1.24
2	A	301	3QE	CAO-N9	6.19	1.54	1.48
2	B	301	3QE	CAO-N9	6.22	1.55	1.48
4	F	301	45T	CAO-N9	6.45	1.55	1.48
4	E	301	45T	CAO-N9	6.60	1.55	1.48
4	C	301	45T	CAO-N9	6.77	1.55	1.48
4	D	301	45T	CAO-N9	7.19	1.56	1.48
4	C	301	45T	PBB-CAM	13.66	1.92	1.79
4	F	301	45T	PBB-CAM	14.91	1.94	1.79
2	A	301	3QE	PBB-CAM	15.26	1.94	1.79
4	E	301	45T	PBB-CAM	15.32	1.94	1.79
2	B	301	3QE	PBB-CAM	15.37	1.94	1.79
4	C	301	45T	PBA-CAL	15.78	1.94	1.79
4	D	301	45T	PBA-CAL	15.80	1.94	1.79
4	D	301	45T	PBB-CAM	15.92	1.95	1.79
2	B	301	3QE	PBA-CAL	15.93	1.95	1.79
4	E	301	45T	PBA-CAL	16.20	1.95	1.79
2	A	301	3QE	PBA-CAL	16.27	1.95	1.79
4	F	301	45T	PBA-CAL	16.56	1.95	1.79

All (30) bond angle outliers are listed below:

Mol	Chain	Res	Type	Atoms	Z	Observed(°)	Ideal(°)
4	F	301	45T	C6-C5-C4	-4.02	116.09	120.90
2	A	301	3QE	C6-C5-C4	-3.87	116.28	120.90
2	B	301	3QE	C6-C5-C4	-3.69	116.48	120.90
4	E	301	45T	C6-C5-C4	-3.62	116.58	120.90
4	C	301	45T	C6-C5-C4	-3.61	116.58	120.90
4	D	301	45T	C6-C5-C4	-3.51	116.70	120.90

Continued on next page...

Continued from previous page...

Mol	Chain	Res	Type	Atoms	Z	Observed(°)	Ideal(°)
4	D	301	45T	OAD-PBB-CAM	-2.91	104.73	111.22
4	C	301	45T	OAD-PBB-CAM	-2.81	104.95	111.22
4	F	301	45T	OAD-PBB-CAM	-2.67	105.25	111.22
2	A	301	3QE	OAD-PBB-CAM	-2.67	105.26	111.22
4	E	301	45T	OAD-PBB-CAM	-2.66	105.28	111.22
4	F	301	45T	OAE-PBA-CAL	-2.63	105.35	111.22
2	B	301	3QE	OAD-PBB-CAM	-2.61	105.38	111.22
4	C	301	45T	OAE-PBA-CAL	-2.58	105.47	111.22
4	D	301	45T	OAE-PBA-CAL	-2.57	105.49	111.22
2	A	301	3QE	OAE-PBA-CAL	-2.56	105.50	111.22
4	E	301	45T	OAE-PBA-CAL	-2.55	105.52	111.22
2	B	301	3QE	OAE-PBA-CAL	-2.43	105.80	111.22
4	C	301	45T	CAO-N9-C8	-2.31	120.98	125.70
4	E	301	45T	CAO-N9-C8	-2.21	121.18	125.70
4	F	301	45T	PBB-CAM-CAK	-2.15	111.31	114.39
2	B	301	3QE	CAO-N9-C8	-2.13	121.34	125.70
4	F	301	45T	N2-C2-N3	-2.12	113.74	117.80
4	D	301	45T	CAO-N9-C8	-2.08	121.45	125.70
4	C	301	45T	OAF-PBA-OAC	2.01	114.01	108.13
2	B	301	3QE	OAG-PBB-OAH	2.01	114.03	108.13
2	B	301	3QE	OAC-PBA-OAF	2.04	114.12	108.13
2	A	301	3QE	OAG-PBB-OAH	2.06	114.17	108.13
4	E	301	45T	OAH-PBB-OAG	2.09	114.27	108.13
4	F	301	45T	OAH-PBB-OAG	2.14	114.39	108.13

There are no chirality outliers.

There are no torsion outliers.

There are no ring outliers.

4 monomers are involved in 7 short contacts:

Mol	Chain	Res	Type	Clashes	Symm-Clashes
2	A	301	3QE	1	0
2	B	301	3QE	1	0
4	D	301	45T	2	0
4	E	301	45T	3	0

5.7 Other polymers ⓘ

There are no such residues in this entry.

5.8 Polymer linkage issues ⓘ

There are no chain breaks in this entry.

6 Fit of model and data ⓘ

6.1 Protein, DNA and RNA chains ⓘ

In the following table, the column labelled ‘#RSRZ> 2’ contains the number (and percentage) of RSRZ outliers, followed by percent RSRZ outliers for the chain as percentile scores relative to all X-ray entries and entries of similar resolution. The OWAB column contains the minimum, median, 95th percentile and maximum values of the occupancy-weighted average B-factor per residue. The column labelled ‘Q< 0.9’ lists the number of (and percentage) of residues with an average occupancy less than 0.9.

Mol	Chain	Analysed	<RSRZ>	#RSRZ>2	OWAB(Å ²)	Q<0.9
1	A	180/201 (89%)	0.27	4 (2%) 65 61	40, 62, 95, 134	0
1	B	178/201 (88%)	0.25	6 (3%) 49 43	45, 61, 93, 147	0
1	C	175/201 (87%)	0.15	3 (1%) 73 69	44, 57, 95, 126	0
1	D	168/201 (83%)	0.41	10 (5%) 25 20	50, 69, 116, 134	0
1	E	169/201 (84%)	0.17	9 (5%) 30 25	48, 68, 96, 126	0
1	F	172/201 (85%)	0.38	10 (5%) 26 22	43, 69, 102, 133	0
All	All	1042/1206 (86%)	0.27	42 (4%) 42 36	40, 64, 103, 147	0

All (42) RSRZ outliers are listed below:

Mol	Chain	Res	Type	RSRZ
1	B	51	LEU	7.6
1	A	202	GLN	5.8
1	B	16	ALA	5.2
1	B	55	THR	5.1
1	B	31	GLU	4.8
1	D	162	VAL	3.9
1	F	48	TYR	3.7
1	B	54	THR	3.3
1	E	91	SER	3.3
1	C	55	THR	3.2
1	E	65	LEU	3.2
1	A	158	VAL	3.2
1	F	109	LEU	3.1
1	D	158	VAL	3.1
1	F	139	THR	3.0
1	C	54	THR	3.0
1	D	133	TRP	3.0
1	A	159	HIS	3.0
1	E	133	TRP	3.0

Continued on next page...

Continued from previous page...

Mol	Chain	Res	Type	RSRZ
1	F	133	TRP	3.0
1	E	105	ILE	2.9
1	D	53	ALA	2.8
1	B	52	SER	2.8
1	D	55	THR	2.7
1	D	159	HIS	2.6
1	D	50	GLU	2.6
1	C	50	GLU	2.5
1	E	55	THR	2.5
1	F	44	ILE	2.4
1	A	160	ALA	2.4
1	F	56	GLY	2.3
1	E	106	LEU	2.3
1	F	103	VAL	2.3
1	F	136	ARG	2.3
1	D	117	ASP	2.2
1	F	110	ASP	2.2
1	F	160	ALA	2.2
1	D	199	ARG	2.1
1	E	199	ARG	2.1
1	E	196	LEU	2.1
1	E	108	ASP	2.1
1	D	198	PRO	2.0

6.2 Non-standard residues in protein, DNA, RNA chains [i](#)

There are no non-standard protein/DNA/RNA residues in this entry.

6.3 Carbohydrates [i](#)

There are no carbohydrates in this entry.

6.4 Ligands [i](#)

In the following table, the Atoms column lists the number of modelled atoms in the group and the number defined in the chemical component dictionary. LLDF column lists the quality of electron density of the group with respect to its neighbouring residues in protein, DNA or RNA chains. The B-factors column lists the minimum, median, 95th percentile and maximum values of B factors of atoms in the group. The column labelled 'Q< 0.9' lists the number of atoms with occupancy less than 0.9.

Mol	Type	Chain	Res	Atoms	RSCC	RSR	LLDF	B-factors(\AA^2)	Q<0.9
2	3QE	B	301	28/28	0.94	0.18	0.60	43,58,75,79	0
4	45T	D	301	28/28	0.88	0.18	0.28	58,79,155,155	0
4	45T	F	301	28/28	0.95	0.15	0.08	41,62,91,94	0
4	45T	C	301	28/28	0.96	0.17	-0.10	40,52,100,101	0
4	45T	E	301	28/28	0.92	0.16	-0.23	54,66,112,117	0
2	3QE	A	301	28/28	0.92	0.15	-0.88	59,75,108,115	0
3	MG	D	302	1/1	0.44	0.59	-	117,117,117,117	0
3	MG	B	302	1/1	0.99	0.11	-	71,71,71,71	0
3	MG	E	302	1/1	0.97	0.27	-	77,77,77,77	0
3	MG	B	303	1/1	0.81	0.17	-	80,80,80,80	0
3	MG	F	302	1/1	0.68	0.12	-	68,68,68,68	0
3	MG	C	302	1/1	0.92	0.16	-	70,70,70,70	0
3	MG	F	303	1/1	0.97	0.08	-	92,92,92,92	0
3	MG	A	302	1/1	0.92	0.12	-	87,87,87,87	0

6.5 Other polymers [i](#)

There are no such residues in this entry.