



wwPDB X-ray Structure Validation Summary Report ⓘ

Jan 31, 2016 – 09:59 PM GMT

PDB ID : 1RIR
Title : Crystal structure of meso-tetrasulphonatophenylporphyrin in complex with Peanut lectin.
Authors : Goel, M.; Kaur, K.J.; Maiya, B.G.; Swamy, M.J.; Salunke, D.M.
Deposited on : 2003-11-17
Resolution : 2.90 Å(reported)

This is a wwPDB X-ray Structure Validation Summary Report for a publicly released PDB entry.
We welcome your comments at validation@mail.wwpdb.org
A user guide is available at
<http://wwpdb.org/validation/2016/XrayValidationReportHelp>
with specific help available everywhere you see the ⓘ symbol.

The following versions of software and data (see [references ⓘ](#)) were used in the production of this report:

MolProbity : 4.02b-467
Mogul : 1.7 (RC4), CSD as536be (2015)
Xtriage (Phenix) : 1.9-1692
EDS : rb-20026688
Percentile statistics : 20151230.v01 (using entries in the PDB archive December 30th 2015)
Refmac : 5.8.0135
CCP4 : 6.5.0
Ideal geometry (proteins) : Engh & Huber (2001)
Ideal geometry (DNA, RNA) : Parkinson et al. (1996)
Validation Pipeline (wwPDB-VP) : trunk26865

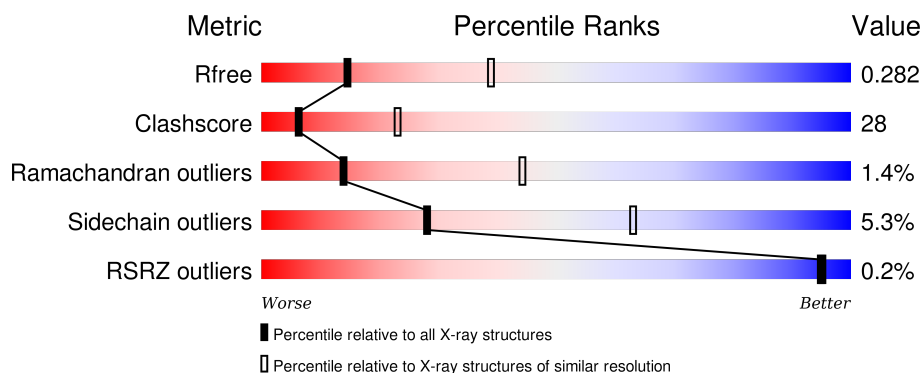
1 Overall quality at a glance

The following experimental techniques were used to determine the structure:

X-RAY DIFFRACTION

The reported resolution of this entry is 2.90 Å.

Percentile scores (ranging between 0-100) for global validation metrics of the entry are shown in the following graphic. The table shows the number of entries on which the scores are based.



Metric	Whole archive (#Entries)	Similar resolution (#Entries, resolution range(Å))
R_{free}	91344	1451 (2.90-2.90)
Clashscore	102246	1668 (2.90-2.90)
Ramachandran outliers	100387	1630 (2.90-2.90)
Sidechain outliers	100360	1632 (2.90-2.90)
RSRZ outliers	91569	1456 (2.90-2.90)

The table below summarises the geometric issues observed across the polymeric chains and their fit to the electron density. The red, orange, yellow and green segments on the lower bar indicate the fraction of residues that contain outliers for ≥ 3 , 2, 1 and 0 types of geometric quality criteria. A grey segment represents the fraction of residues that are not modelled. The numeric value for each fraction is indicated below the corresponding segment, with a dot representing fractions $\leq 5\%$. The upper red bar (where present) indicates the fraction of residues that have poor fit to the electron density. The numeric value is given above the bar.

Mol	Chain	Length	Quality of chain
1	A	236	<div> <div>57%</div> <div>37%</div> <div>• •</div> </div>
1	B	236	<div> <div>56%</div> <div>39%</div> <div>• •</div> </div>
1	C	236	<div> <div>52%</div> <div>43%</div> <div>• •</div> </div>
1	D	236	<div> <div>52%</div> <div>42%</div> <div>• •</div> </div>

2 Entry composition

There are 5 unique types of molecules in this entry. The entry contains 7745 atoms, of which 0 are hydrogens and 0 are deuteriums.

In the tables below, the ZeroOcc column contains the number of atoms modelled with zero occupancy, the AltConf column contains the number of residues with at least one atom in alternate conformation and the Trace column contains the number of residues modelled with at most 2 atoms.

- Molecule 1 is a protein called Galactose-binding lectin.

Mol	Chain	Residues	Atoms					ZeroOcc	AltConf	Trace
1	A	232	Total	C	N	O	S	0	0	0
			1743	1102	287	352	2			
1	B	232	Total	C	N	O	S	0	0	0
			1743	1102	287	352	2			
1	C	232	Total	C	N	O	S	0	0	0
			1743	1102	287	352	2			
1	D	232	Total	C	N	O	S	0	0	0
			1743	1102	287	352	2			

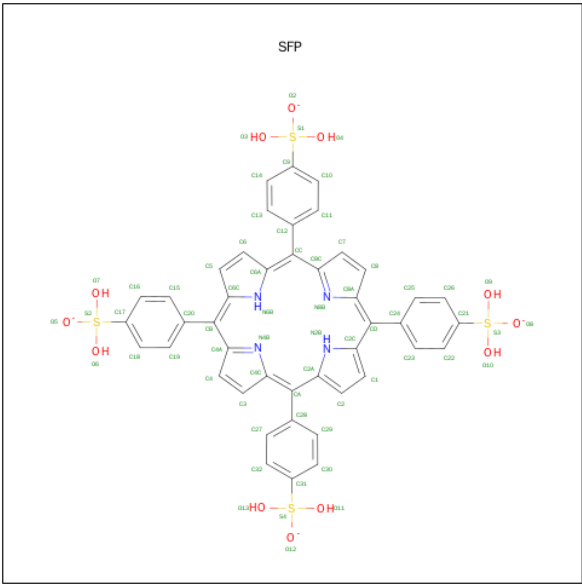
- Molecule 2 is CALCIUM ION (three-letter code: CA) (formula: Ca).

Mol	Chain	Residues	Atoms		ZeroOcc	AltConf
2	B	1	Total	Ca	0	0
			1	1		
2	A	1	Total	Ca	0	0
			1	1		
2	D	1	Total	Ca	0	0
			1	1		
2	C	1	Total	Ca	0	0
			1	1		

- Molecule 3 is MANGANESE (II) ION (three-letter code: MN) (formula: Mn).

Mol	Chain	Residues	Atoms		ZeroOcc	AltConf
3	B	1	Total	Mn	0	0
			1	1		
3	A	1	Total	Mn	0	0
			1	1		
3	D	1	Total	Mn	0	0
			1	1		
3	C	1	Total	Mn	0	0
			1	1		

- Molecule 4 is 5,10,15,20-TETRAKIS(4-SULPFONATOPHENYL)-21H,23H-PORPHINE (three-letter code: SFP) (formula: C₄₄H₃₄N₄O₁₂S₄).



Mol	Chain	Residues	Atoms					ZeroOcc	AltConf
4	A	1	Total	C	N	O	S	0	0
			64	44	4	12	4		
4	A	1	Total	C	N	O	S	0	0
			64	44	4	12	4		
4	B	1	Total	C	N	O	S	0	0
			64	44	4	12	4		
4	B	1	Total	C	N	O	S	0	0
			64	44	4	12	4		
4	C	1	Total	C	N	O	S	0	0
			64	44	4	12	4		
4	C	1	Total	C	N	O	S	0	0
			64	44	4	12	4		
4	D	1	Total	C	N	O	S	0	0
			64	44	4	12	4		
4	D	1	Total	C	N	O	S	0	0
			64	44	4	12	4		
4	B	1	Total	C	N	O	S	0	0
			64	44	4	12	4		
4	A	1	Total	C	N	O	S	0	0
			64	44	4	12	4		
4	A	1	Total	C	N	O	S	0	0
			64	44	4	12	4		

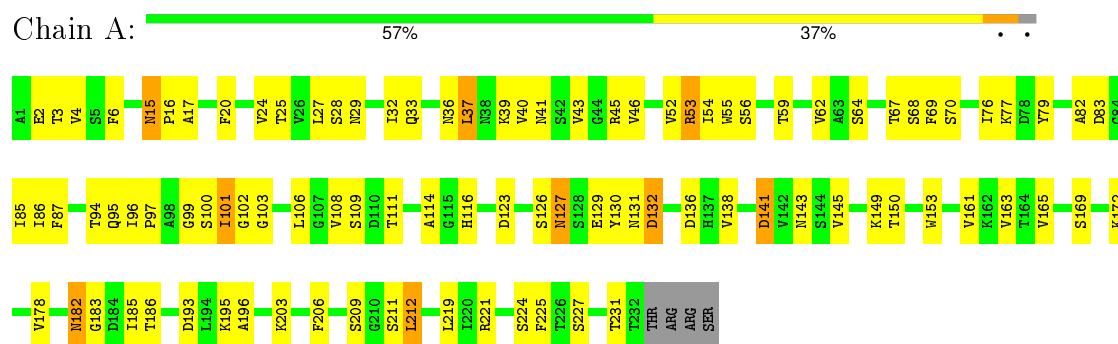
- Molecule 5 is water.

Mol	Chain	Residues	Atoms		ZeroOcc	AltConf
5	A	22	Total 22	O 22	0	0
5	B	15	Total 15	O 15	0	0
5	C	12	Total 12	O 12	0	0
5	D	12	Total 12	O 12	0	0

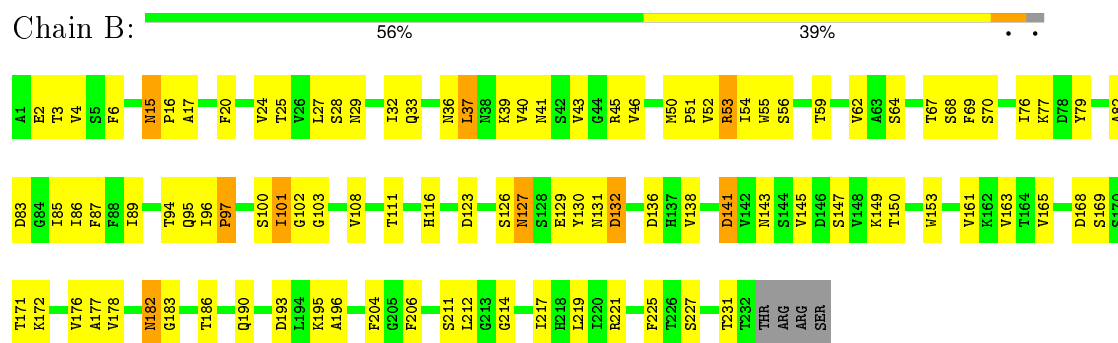
3 Residue-property plots [i](#)

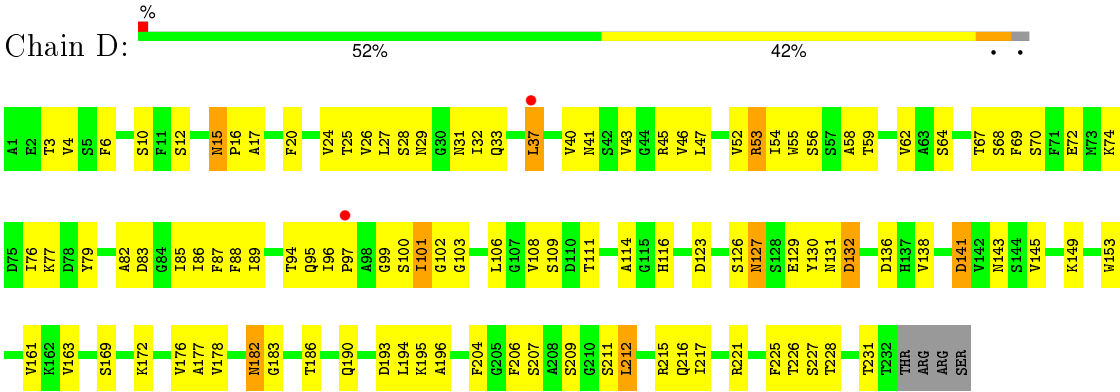
These plots are drawn for all protein, RNA and DNA chains in the entry. The first graphic for a chain summarises the proportions of errors displayed in the second graphic. The second graphic shows the sequence view annotated by issues in geometry and electron density. Residues are color-coded according to the number of geometric quality criteria for which they contain at least one outlier: green = 0, yellow = 1, orange = 2 and red = 3 or more. A red dot above a residue indicates a poor fit to the electron density ($\text{RSRZ} > 2$). Stretches of 2 or more consecutive residues without any outlier are shown as a green connector. Residues present in the sample, but not in the model, are shown in grey.

• Molecule 1: Galactose-binding lectin



• Molecule 1: Galactose-binding lectin





4 Data and refinement statistics

Property	Value	Source
Space group	P 32	Depositor
Cell constants a, b, c, α , β , γ	94.80 Å 94.80 Å 144.00 Å 90.00° 90.00° 120.00°	Depositor
Resolution (Å)	100.00 – 2.90 33.73 – 2.90	Depositor EDS
% Data completeness (in resolution range)	(Not available) (100.00-2.90) 80.9 (33.73-2.90)	Depositor EDS
R_{merge}	0.10	Depositor
R_{sym}	(Not available)	Depositor
$\langle I/\sigma(I) \rangle$ ¹	0.42 (at 2.90 Å)	Xtriage
Refinement program	CNS 1.0	Depositor
R, R_{free}	0.234 , 0.282 0.235 , 0.282	Depositor DCC
R_{free} test set	2565 reflections (9.87%)	DCC
Wilson B-factor (Å ²)	53.8	Xtriage
Anisotropy	0.029	Xtriage
Bulk solvent k_{sol} (e/Å ³), B_{sol} (Å ²)	0.30 , 49.7	EDS
Estimated twinning fraction	0.021 for -h,-k,l 0.387 for h,-h-k,-l 0.030 for -k,-h,-l	Xtriage
L-test for twinning ²	$\langle L \rangle = 0.50$, $\langle L^2 \rangle = 0.33$	Xtriage
Outliers	0 of 29332 reflections	Xtriage
F_o, F_c correlation	0.91	EDS
Total number of atoms	7745	wwPDB-VP
Average B, all atoms (Å ²)	65.0	wwPDB-VP

Xtriage's analysis on translational NCS is as follows: *The largest off-origin peak in the Patterson function is 4.19% of the height of the origin peak. No significant pseudotranslation is detected.*

¹Intensities estimated from amplitudes.

²Theoretical values of $\langle |L| \rangle$, $\langle L^2 \rangle$ for acentric reflections are 0.5, 0.375 respectively for untwinned datasets, and 0.333, 0.2 for perfectly twinned datasets.

5 Model quality [i](#)

5.1 Standard geometry [i](#)

Bond lengths and bond angles in the following residue types are not validated in this section: CA, MN, SFP

The Z score for a bond length (or angle) is the number of standard deviations the observed value is removed from the expected value. A bond length (or angle) with $|Z| > 5$ is considered an outlier worth inspection. RMSZ is the root-mean-square of all Z scores of the bond lengths (or angles).

Mol	Chain	Bond lengths		Bond angles	
		RMSZ	$\# Z > 5$	RMSZ	$\# Z > 5$
1	A	0.47	0/1779	0.74	0/2426
1	B	0.50	0/1779	0.75	0/2426
1	C	0.62	0/1779	0.79	0/2426
1	D	0.62	0/1779	0.78	0/2426
All	All	0.56	0/7116	0.77	0/9704

There are no bond length outliers.

There are no bond angle outliers.

There are no chirality outliers.

There are no planarity outliers.

5.2 Too-close contacts [i](#)

In the following table, the Non-H and H(model) columns list the number of non-hydrogen atoms and hydrogen atoms in the chain respectively. The H(added) column lists the number of hydrogen atoms added and optimized by MolProbity. The Clashes column lists the number of clashes within the asymmetric unit, whereas Symm-Clashes lists symmetry related clashes.

Mol	Chain	Non-H	H(model)	H(added)	Clashes	Symm-Clashes
1	A	1743	0	1699	94	0
1	B	1743	0	1699	94	0
1	C	1743	0	1699	110	0
1	D	1743	0	1699	111	0
2	A	1	0	0	0	0
2	B	1	0	0	0	0
2	C	1	0	0	0	0
2	D	1	0	0	0	0
3	A	1	0	0	0	0

Continued on next page...

Continued from previous page...

Mol	Chain	Non-H	H(model)	H(added)	Clashes	Symm-Clashes
3	B	1	0	0	0	0
3	C	1	0	0	0	0
3	D	1	0	0	0	0
4	A	256	0	120	20	0
4	B	192	0	90	8	0
4	C	128	0	60	6	0
4	D	128	0	60	8	0
5	A	22	0	0	4	0
5	B	15	0	0	1	0
5	C	12	0	0	1	0
5	D	12	0	0	0	0
All	All	7745	0	7126	411	0

The all-atom clashscore is defined as the number of clashes found per 1000 atoms (including hydrogen atoms). The all-atom clashscore for this structure is 28.

The worst 5 of 411 close contacts within the same asymmetric unit are listed below, sorted by their clash magnitude.

Atom-1	Atom-2	Interatomic distance (Å)	Clash overlap (Å)
1:C:41:ASN:HB2	1:C:100:SER:O	1.53	1.07
1:B:41:ASN:HB2	1:B:100:SER:O	1.54	1.07
1:D:41:ASN:HB2	1:D:100:SER:O	1.55	1.05
1:A:41:ASN:HB2	1:A:100:SER:O	1.56	1.04
4:D:241:SFP:H15	4:D:242:SFP:H14	1.48	0.92

There are no symmetry-related clashes.

5.3 Torsion angles [i](#)

5.3.1 Protein backbone [i](#)

In the following table, the Percentiles column shows the percent Ramachandran outliers of the chain as a percentile score with respect to all X-ray entries followed by that with respect to entries of similar resolution.

The Analysed column shows the number of residues for which the backbone conformation was analysed, and the total number of residues.

Mol	Chain	Analysed	Favoured	Allowed	Outliers	Percentiles
1	A	230/236 (98%)	203 (88%)	24 (10%)	3 (1%)	15 46

Continued on next page...

Continued from previous page...

Mol	Chain	Analysed	Favoured	Allowed	Outliers	Percentiles	
1	B	230/236 (98%)	204 (89%)	22 (10%)	4 (2%)	11	38
1	C	230/236 (98%)	203 (88%)	24 (10%)	3 (1%)	15	46
1	D	230/236 (98%)	202 (88%)	25 (11%)	3 (1%)	15	46
All	All	920/944 (98%)	812 (88%)	95 (10%)	13 (1%)	14	44

5 of 13 Ramachandran outliers are listed below:

Mol	Chain	Res	Type
1	A	103	GLY
1	B	103	GLY
1	C	103	GLY
1	D	103	GLY
1	D	28	SER

5.3.2 Protein sidechains ⓘ

In the following table, the Percentiles column shows the percent sidechain outliers of the chain as a percentile score with respect to all X-ray entries followed by that with respect to entries of similar resolution.

The Analysed column shows the number of residues for which the sidechain conformation was analysed, and the total number of residues.

Mol	Chain	Analysed	Rotameric	Outliers	Percentiles	
1	A	197/201 (98%)	186 (94%)	11 (6%)	26	60
1	B	197/201 (98%)	187 (95%)	10 (5%)	29	65
1	C	197/201 (98%)	187 (95%)	10 (5%)	29	65
1	D	197/201 (98%)	186 (94%)	11 (6%)	26	60
All	All	788/804 (98%)	746 (95%)	42 (5%)	28	63

5 of 42 residues with a non-rotameric sidechain are listed below:

Mol	Chain	Res	Type
1	B	136	ASP
1	C	53	ARG
1	D	136	ASP
1	B	141	ASP
1	C	15	ASN

Some sidechains can be flipped to improve hydrogen bonding and reduce clashes. 5 of 28 such sidechains are listed below:

Mol	Chain	Res	Type
1	B	182	ASN
1	C	19	ASN
1	D	95	GLN
1	B	216	GLN
1	C	15	ASN

5.3.3 RNA ⓘ

There are no RNA molecules in this entry.

5.4 Non-standard residues in protein, DNA, RNA chains ⓘ

There are no non-standard protein/DNA/RNA residues in this entry.

5.5 Carbohydrates ⓘ

There are no carbohydrates in this entry.

5.6 Ligand geometry ⓘ

Of 19 ligands modelled in this entry, 8 are monoatomic - leaving 11 for Mogul analysis.

In the following table, the Counts columns list the number of bonds (or angles) for which Mogul statistics could be retrieved, the number of bonds (or angles) that are observed in the model and the number of bonds (or angles) that are defined in the chemical component dictionary. The Link column lists molecule types, if any, to which the group is linked. The Z score for a bond length (or angle) is the number of standard deviations the observed value is removed from the expected value. A bond length (or angle) with $|Z| > 2$ is considered an outlier worth inspection. RMSZ is the root-mean-square of all Z scores of the bond lengths (or angles).

Mol	Type	Chain	Res	Link	Bond lengths			Bond angles		
					Counts	RMSZ	$\# Z > 2$	Counts	RMSZ	$\# Z > 2$
4	SFP	A	244	-	54,72,72	3.15	20 (37%)	66,112,112	1.59	15 (22%)
4	SFP	A	245	-	54,72,72	2.59	17 (31%)	66,112,112	1.31	10 (15%)
4	SFP	A	248	-	54,72,72	2.57	16 (29%)	66,112,112	1.38	12 (18%)
4	SFP	A	249	-	54,72,72	2.59	15 (27%)	66,112,112	1.46	10 (15%)
4	SFP	B	237	-	54,72,72	2.54	16 (29%)	66,112,112	1.27	7 (10%)
4	SFP	B	238	-	54,72,72	2.63	17 (31%)	66,112,112	1.47	11 (16%)

Mol	Type	Chain	Res	Link	Bond lengths			Bond angles		
					Counts	RMSZ	# Z > 2	Counts	RMSZ	# Z > 2
4	SFP	B	243	-	54,72,72	2.32	14 (25%)	66,112,112	1.30	9 (13%)
4	SFP	C	239	-	54,72,72	2.65	17 (31%)	66,112,112	1.35	11 (16%)
4	SFP	C	240	-	54,72,72	2.52	15 (27%)	66,112,112	1.40	8 (12%)
4	SFP	D	241	-	54,72,72	2.73	18 (33%)	66,112,112	1.38	7 (10%)
4	SFP	D	242	-	54,72,72	2.57	15 (27%)	66,112,112	1.51	6 (9%)

In the following table, the Chirals column lists the number of chiral outliers, the number of chiral centers analysed, the number of these observed in the model and the number defined in the chemical component dictionary. Similar counts are reported in the Torsion and Rings columns. '-' means no outliers of that kind were identified.

Mol	Type	Chain	Res	Link	Chirals	Torsions	Rings
4	SFP	A	244	-	-	0/34/90/90	0/4/9/9
4	SFP	A	245	-	-	0/34/90/90	0/4/9/9
4	SFP	A	248	-	-	0/34/90/90	0/4/9/9
4	SFP	A	249	-	-	0/34/90/90	0/4/9/9
4	SFP	B	237	-	-	0/34/90/90	0/4/9/9
4	SFP	B	238	-	-	0/34/90/90	0/4/9/9
4	SFP	B	243	-	-	0/34/90/90	0/4/9/9
4	SFP	C	239	-	-	0/34/90/90	0/4/9/9
4	SFP	C	240	-	-	0/34/90/90	0/4/9/9
4	SFP	D	241	-	-	0/34/90/90	0/4/9/9
4	SFP	D	242	-	-	0/34/90/90	0/4/9/9

The worst 5 of 180 bond length outliers are listed below:

Mol	Chain	Res	Type	Atoms	Z	Observed(Å)	Ideal(Å)
4	B	238	SFP	C7-C8C	-2.60	1.39	1.45
4	B	238	SFP	C8-C8A	-2.36	1.40	1.45
4	A	244	SFP	C8-C7	-2.29	1.30	1.35
4	A	248	SFP	C8-C8A	-2.24	1.40	1.45
4	B	243	SFP	C8-C8A	-2.06	1.40	1.45

The worst 5 of 106 bond angle outliers are listed below:

Mol	Chain	Res	Type	Atoms	Z	Observed(°)	Ideal(°)
4	D	242	SFP	C11-C12-CC	-5.51	112.89	120.92
4	A	244	SFP	C27-C28-CA	-4.30	114.66	120.92
4	B	238	SFP	C27-C28-CA	-4.25	114.72	120.92
4	A	249	SFP	C27-C28-CA	-4.02	115.06	120.92
4	A	249	SFP	C5-C6C-N6B	-4.01	106.28	110.42

There are no chirality outliers.

There are no torsion outliers.

There are no ring outliers.

11 monomers are involved in 42 short contacts:

Mol	Chain	Res	Type	Clashes	Symm-Clashes
4	A	244	SFP	9	0
4	A	245	SFP	6	0
4	A	248	SFP	2	0
4	A	249	SFP	9	0
4	B	237	SFP	3	0
4	B	238	SFP	7	0
4	B	243	SFP	1	0
4	C	239	SFP	5	0
4	C	240	SFP	4	0
4	D	241	SFP	7	0
4	D	242	SFP	3	0

5.7 Other polymers [i](#)

There are no such residues in this entry.

5.8 Polymer linkage issues [i](#)

There are no chain breaks in this entry.

6 Fit of model and data [i](#)

6.1 Protein, DNA and RNA chains [i](#)

In the following table, the column labelled ‘#RSRZ> 2’ contains the number (and percentage) of RSRZ outliers, followed by percent RSRZ outliers for the chain as percentile scores relative to all X-ray entries and entries of similar resolution. The OWAB column contains the minimum, median, 95th percentile and maximum values of the occupancy-weighted average B-factor per residue. The column labelled ‘Q< 0.9’ lists the number of (and percentage) of residues with an average occupancy less than 0.9.

Mol	Chain	Analysed	<RSRZ>	#RSRZ>2		OWAB(Å ²)	Q<0.9
1	A	232/236 (98%)	-0.40	0	100 100	19, 47, 90, 165	0
1	B	232/236 (98%)	-0.41	0	100 100	12, 47, 92, 155	0
1	C	232/236 (98%)	-0.29	0	100 100	29, 70, 130, 177	0
1	D	232/236 (98%)	-0.26	2 (0%)	85 84	23, 69, 128, 176	0
All	All	928/944 (98%)	-0.34	2 (0%)	95 95	12, 57, 115, 177	0

All (2) RSRZ outliers are listed below:

Mol	Chain	Res	Type	RSRZ
1	D	97	PRO	2.8
1	D	37	LEU	2.3

6.2 Non-standard residues in protein, DNA, RNA chains [i](#)

There are no non-standard protein/DNA/RNA residues in this entry.

6.3 Carbohydrates [i](#)

There are no carbohydrates in this entry.

6.4 Ligands [i](#)

In the following table, the Atoms column lists the number of modelled atoms in the group and the number defined in the chemical component dictionary. LLDF column lists the quality of electron density of the group with respect to its neighbouring residues in protein, DNA or RNA chains. The B-factors column lists the minimum, median, 95th percentile and maximum values of B factors of atoms in the group. The column labelled ‘Q< 0.9’ lists the number of atoms with occupancy less than 0.9.

Mol	Type	Chain	Res	Atoms	RSCC	RSR	LLDF	B-factors(\AA^2)	Q<0.9
4	SFP	D	241	64/64	0.86	0.21	1.43	144,153,164,166	0
4	SFP	A	244	64/64	0.92	0.16	0.56	106,114,126,128	0
4	SFP	C	239	64/64	0.91	0.18	0.28	132,140,152,154	0
4	SFP	D	242	64/64	0.95	0.15	-0.08	99,107,119,121	0
2	CA	D	248	1/1	1.00	0.14	-0.09	28,28,28,28	0
4	SFP	A	248	64/64	0.97	0.16	-0.11	75,83,95,97	0
4	SFP	A	245	64/64	0.96	0.16	-0.15	70,78,90,92	0
4	SFP	B	243	64/64	0.97	0.15	-0.21	73,81,93,95	0
4	SFP	C	240	64/64	0.96	0.15	-0.21	86,94,106,108	0
4	SFP	A	249	64/64	0.97	0.17	-0.24	65,74,85,87	0
4	SFP	B	238	64/64	0.96	0.15	-0.36	72,81,92,94	0
2	CA	A	246	1/1	1.00	0.13	-0.45	20,20,20,20	0
4	SFP	B	237	64/64	0.96	0.14	-0.52	76,84,96,98	0
2	CA	C	252	1/1	0.99	0.11	-0.91	31,31,31,31	0
3	MN	C	253	1/1	1.00	0.12	-1.19	51,51,51,51	0
3	MN	D	249	1/1	1.00	0.12	-1.28	54,54,54,54	0
2	CA	B	250	1/1	1.00	0.12	-2.09	19,19,19,19	0
3	MN	B	251	1/1	1.00	0.10	-2.17	48,48,48,48	0
3	MN	A	247	1/1	1.00	0.10	-3.53	51,51,51,51	0

6.5 Other polymers [i](#)

There are no such residues in this entry.