



Full wwPDB X-ray Structure Validation Report ⓘ

Jan 31, 2016 – 09:58 PM GMT

PDB ID : 1RJ9
Title : Structure of the heterodimer of the conserved GTPase domains of the Signal Recognition Particle (Ffh) and Its Receptor (FtsY)
Authors : Egea, P.F.; Shan, S.O.; Napetschnig, J.; Savage, D.F.; Walter, P.; Stroud, R.M.
Deposited on : 2003-11-18
Resolution : 1.90 Å(reported)

This is a Full wwPDB X-ray Structure Validation Report for a publicly released PDB entry.
We welcome your comments at validation@mail.wwpdb.org
A user guide is available at
<http://wwpdb.org/validation/2016/XrayValidationReportHelp>
with specific help available everywhere you see the ⓘ symbol.

The following versions of software and data (see [references ⓘ](#)) were used in the production of this report:

MolProbity : 4.02b-467
Mogul : 1.7 (RC4), CSD as536be (2015)
Xtriage (Phenix) : 1.9-1692
EDS : rb-20026688
Percentile statistics : 20151230.v01 (using entries in the PDB archive December 30th 2015)
Refmac : 5.8.0135
CCP4 : 6.5.0
Ideal geometry (proteins) : Engh & Huber (2001)
Ideal geometry (DNA, RNA) : Parkinson et al. (1996)
Validation Pipeline (wwPDB-VP) : trunk26865

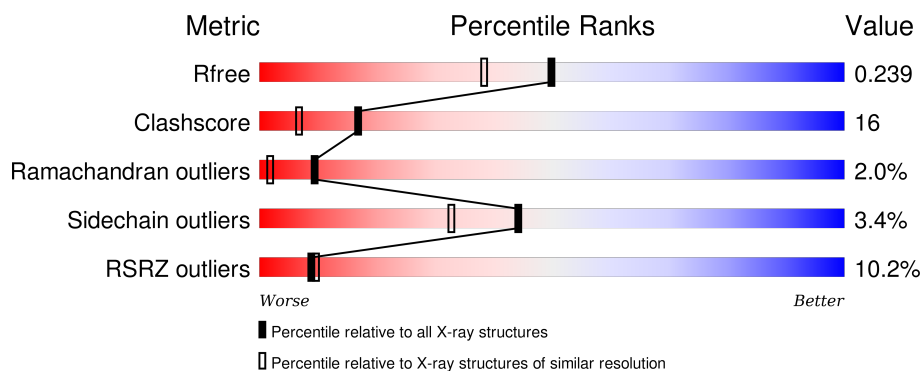
1 Overall quality at a glance ⓘ

The following experimental techniques were used to determine the structure:

X-RAY DIFFRACTION

The reported resolution of this entry is 1.90 Å.

Percentile scores (ranging between 0-100) for global validation metrics of the entry are shown in the following graphic. The table shows the number of entries on which the scores are based.



Metric	Whole archive (#Entries)	Similar resolution (#Entries, resolution range(Å))
R_{free}	91344	4755 (1.90-1.90)
Clashscore	102246	5398 (1.90-1.90)
Ramachandran outliers	100387	5338 (1.90-1.90)
Sidechain outliers	100360	5339 (1.90-1.90)
RSRZ outliers	91569	4766 (1.90-1.90)

The table below summarises the geometric issues observed across the polymeric chains and their fit to the electron density. The red, orange, yellow and green segments on the lower bar indicate the fraction of residues that contain outliers for ≥ 3 , 2, 1 and 0 types of geometric quality criteria. A grey segment represents the fraction of residues that are not modelled. The numeric value for each fraction is indicated below the corresponding segment, with a dot representing fractions $\leq 5\%$. The upper red bar (where present) indicates the fraction of residues that have poor fit to the electron density. The numeric value is given above the bar.

Mol	Chain	Length	Quality of chain
1	A	304	<div> <div>10%</div> <div> <div></div> <div>65%</div> <div>24%</div> <div>••</div> <div>9%</div> </div> </div>
2	B	300	<div> <div>9%</div> <div> <div></div> <div>68%</div> <div>22%</div> <div>••</div> <div>6%</div> </div> </div>

The following table lists non-polymeric compounds, carbohydrate monomers and non-standard residues in protein, DNA, RNA chains that are outliers for geometric or electron-density-fit criteria:

Mol	Type	Chain	Res	Chirality	Geometry	Clashes	Electron density
3	MG	A	501	-	-	-	X
3	MG	B	601	-	-	-	X

2 Entry composition

There are 5 unique types of molecules in this entry. The entry contains 4695 atoms, of which 0 are hydrogens and 0 are deuteriums.

In the tables below, the ZeroOcc column contains the number of atoms modelled with zero occupancy, the AltConf column contains the number of residues with at least one atom in alternate conformation and the Trace column contains the number of residues modelled with at most 2 atoms.

- Molecule 1 is a protein called Signal Recognition Protein.

Mol	Chain	Residues	Atoms					ZeroOcc	AltConf	Trace
1	A	277	Total	C	N	O	S	0	0	0
			2091	1332	360	393	6			

There is a discrepancy between the modelled and reference sequences:

Chain	Residue	Modelled	Actual	Comment	Reference
A	169	SER	PRO	ENGINEERED	UNP P83749

- Molecule 2 is a protein called Signal recognition particle protein.

Mol	Chain	Residues	Atoms					ZeroOcc	AltConf	Trace
2	B	282	Total	C	N	O	S	0	0	0
			2151	1351	389	406	5			

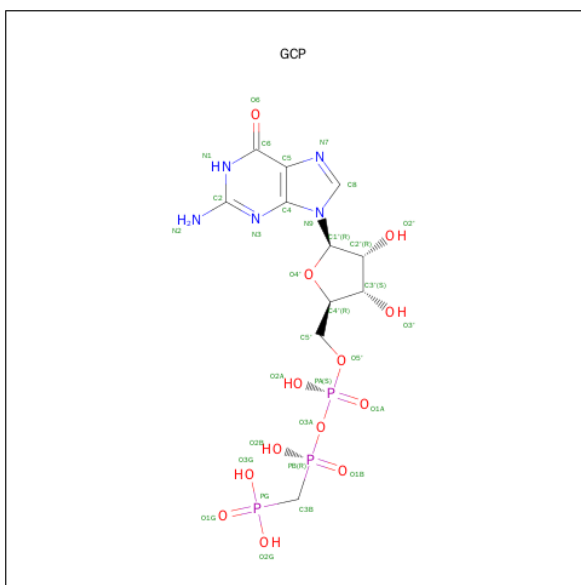
There is a discrepancy between the modelled and reference sequences:

Chain	Residue	Modelled	Actual	Comment	Reference
B	48	THR	ALA	ENGINEERED	UNP O07347

- Molecule 3 is MAGNESIUM ION (three-letter code: MG) (formula: Mg).

Mol	Chain	Residues	Atoms		ZeroOcc	AltConf
3	B	1	Total	Mg	0	0
			1	1		
3	A	1	Total	Mg	0	0
			1	1		

- Molecule 4 is PHOSPHOMETHYLPHOSPHONIC ACID GUANYLATE ESTER (three-letter code: GCP) (formula: C₁₁H₁₈N₅O₁₃P₃).



Mol	Chain	Residues	Atoms					ZeroOcc	AltConf
4	A	1	Total 32	C 11	N 5	O 13	P 3	0	0
4	B	1	Total 32	C 11	N 5	O 13	P 3	0	0

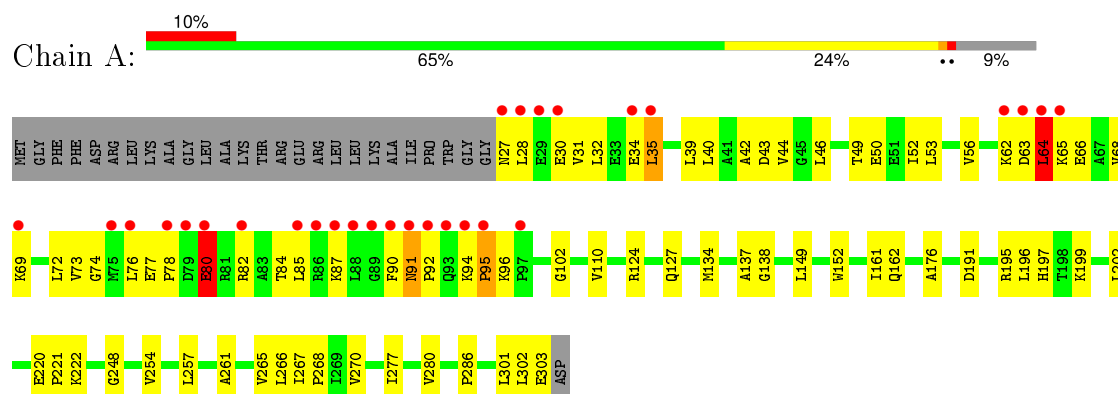
- Molecule 5 is water.

Mol	Chain	Residues	Atoms	ZeroOcc	AltConf
5	A	179	Total O 179 179	0	0
5	B	208	Total O 208 208	0	0

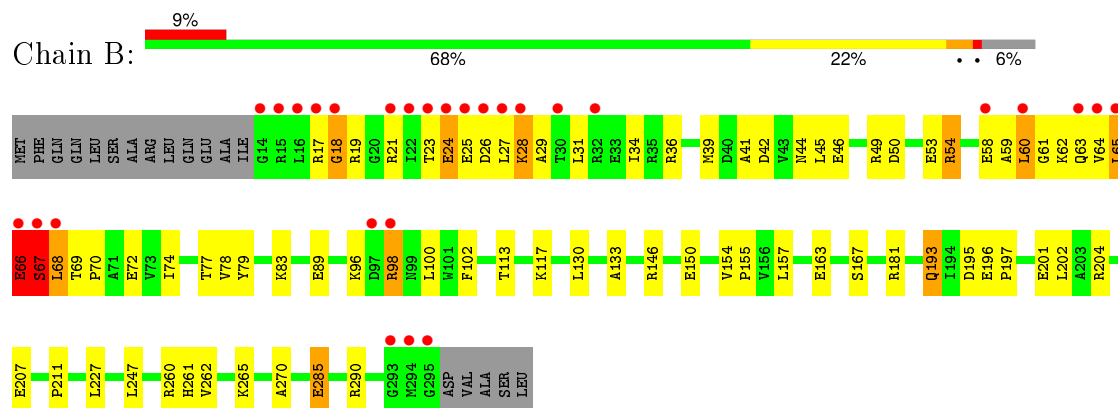
3 Residue-property plots

These plots are drawn for all protein, RNA and DNA chains in the entry. The first graphic for a chain summarises the proportions of errors displayed in the second graphic. The second graphic shows the sequence view annotated by issues in geometry and electron density. Residues are color-coded according to the number of geometric quality criteria for which they contain at least one outlier: green = 0, yellow = 1, orange = 2 and red = 3 or more. A red dot above a residue indicates a poor fit to the electron density ($RSRZ > 2$). Stretches of 2 or more consecutive residues without any outlier are shown as a green connector. Residues present in the sample, but not in the model, are shown in grey.

• Molecule 1: Signal Recognition Protein



• Molecule 2: Signal recognition particle protein



4 Data and refinement statistics

Property	Value	Source
Space group	P 21 21 21	Depositor
Cell constants a, b, c, α , β , γ	75.04Å 83.68Å 94.02Å 90.00° 90.00° 90.00°	Depositor
Resolution (Å)	50.00 – 1.90 39.84 – 1.88	Depositor EDS
% Data completeness (in resolution range)	96.6 (50.00-1.90) 94.4 (39.84-1.88)	Depositor EDS
R_{merge}	0.08	Depositor
R_{sym}	0.08	Depositor
$\langle I/\sigma(I) \rangle$ ¹	1.16 (at 1.88Å)	Xtriage
Refinement program	CNS	Depositor
R, R_{free}	0.206 , 0.239 0.206 , 0.239	Depositor DCC
R_{free} test set	3436 reflections (7.59%)	DCC
Wilson B-factor (Å ²)	18.2	Xtriage
Anisotropy	0.263	Xtriage
Bulk solvent k_{sol} (e/Å ³), B_{sol} (Å ²)	0.36 , 51.3	EDS
Estimated twinning fraction	No twinning to report.	Xtriage
L-test for twinning ²	$\langle L \rangle = 0.49$, $\langle L^2 \rangle = 0.32$	Xtriage
Outliers	0 of 47790 reflections	Xtriage
F_o, F_c correlation	0.93	EDS
Total number of atoms	4695	wwPDB-VP
Average B, all atoms (Å ²)	22.0	wwPDB-VP

Xtriage's analysis on translational NCS is as follows: *The largest off-origin peak in the Patterson function is 7.66% of the height of the origin peak. No significant pseudotranslation is detected.*

¹Intensities estimated from amplitudes.

²Theoretical values of $\langle |L| \rangle$, $\langle L^2 \rangle$ for acentric reflections are 0.5, 0.375 respectively for untwinned datasets, and 0.333, 0.2 for perfectly twinned datasets.

5 Model quality [i](#)

5.1 Standard geometry [i](#)

Bond lengths and bond angles in the following residue types are not validated in this section: GCP, MG

The Z score for a bond length (or angle) is the number of standard deviations the observed value is removed from the expected value. A bond length (or angle) with $|Z| > 5$ is considered an outlier worth inspection. RMSZ is the root-mean-square of all Z scores of the bond lengths (or angles).

Mol	Chain	Bond lengths		Bond angles	
		RMSZ	$\# Z > 5$	RMSZ	$\# Z > 5$
1	A	0.34	0/2122	0.59	2/2867 (0.1%)
2	B	0.29	0/2175	0.61	2/2933 (0.1%)
All	All	0.32	0/4297	0.60	4/5800 (0.1%)

There are no bond length outliers.

All (4) bond angle outliers are listed below:

Mol	Chain	Res	Type	Atoms	Z	Observed(°)	Ideal(°)
1	A	95	PRO	N-CA-CB	5.74	110.19	103.30
2	B	66	GLU	N-CA-C	-5.40	96.42	111.00
1	A	80	GLU	N-CA-C	5.38	125.52	111.00
2	B	67	SER	N-CA-C	-5.31	96.66	111.00

There are no chirality outliers.

There are no planarity outliers.

5.2 Too-close contacts [i](#)

In the following table, the Non-H and H(model) columns list the number of non-hydrogen atoms and hydrogen atoms in the chain respectively. The H(added) column lists the number of hydrogen atoms added and optimized by MolProbity. The Clashes column lists the number of clashes within the asymmetric unit, whereas Symm-Clashes lists symmetry related clashes.

Mol	Chain	Non-H	H(model)	H(added)	Clashes	Symm-Clashes
1	A	2091	0	2152	71	0
2	B	2151	0	2231	75	0
3	A	1	0	0	0	0
3	B	1	0	0	0	0
4	A	32	0	14	0	0

Continued on next page...

Continued from previous page...

Mol	Chain	Non-H	H(model)	H(added)	Clashes	Symm-Clashes
4	B	32	0	14	0	0
5	A	179	0	0	7	0
5	B	208	0	0	8	0
All	All	4695	0	4411	143	0

The all-atom clashscore is defined as the number of clashes found per 1000 atoms (including hydrogen atoms). The all-atom clashscore for this structure is 16.

All (143) close contacts within the same asymmetric unit are listed below, sorted by their clash magnitude.

Atom-1	Atom-2	Interatomic distance (Å)	Clash overlap (Å)
1:A:254:VAL:HG21	1:A:266:LEU:HD11	1.22	1.09
2:B:34:ILE:HD13	2:B:78:VAL:HG21	1.45	0.98
2:B:44:ASN:OD1	2:B:46:GLU:HG2	1.71	0.89
2:B:193:GLN:H	2:B:193:GLN:HE21	1.18	0.89
2:B:21:ARG:CZ	2:B:63:GLN:HG3	2.03	0.88
2:B:31:LEU:HD23	2:B:34:ILE:HD12	1.57	0.86
1:A:161:ILE:HD13	1:A:176:ALA:HA	1.58	0.86
1:A:196:LEU:HD12	5:A:931:HOH:O	1.77	0.84
1:A:91:ASN:N	1:A:92:PRO:HD3	1.93	0.81
1:A:161:ILE:CD1	1:A:176:ALA:HA	2.18	0.72
1:A:91:ASN:H	1:A:92:PRO:HD3	1.54	0.71
2:B:98:ARG:HH21	2:B:100:LEU:HB2	1.58	0.68
1:A:152:TRP:HZ3	1:A:286:PRO:HG3	1.60	0.67
1:A:30:GLU:O	1:A:34:GLU:HG3	1.96	0.65
2:B:64:VAL:O	2:B:65:LEU:O	2.15	0.65
2:B:197:PRO:O	2:B:201:GLU:HG3	1.98	0.63
2:B:89:GLU:HG3	5:B:781:HOH:O	1.96	0.63
1:A:267:ILE:HB	1:A:268:PRO:HD3	1.78	0.63
1:A:84:THR:HG22	5:A:805:HOH:O	1.99	0.63
2:B:21:ARG:NH2	2:B:63:GLN:HG3	2.15	0.62
2:B:98:ARG:NH2	2:B:100:LEU:HD12	2.15	0.62
1:A:64:LEU:O	1:A:66:GLU:N	2.32	0.61
1:A:49:THR:O	1:A:53:LEU:HD23	2.00	0.61
2:B:193:GLN:H	2:B:193:GLN:NE2	1.93	0.60
1:A:303:GLU:OE2	1:A:303:GLU:HA	2.02	0.60
1:A:35:LEU:HD21	1:A:68:VAL:HG11	1.84	0.59
1:A:199:LYS:HD2	5:A:930:HOH:O	2.02	0.59
1:A:40:LEU:HD21	1:A:46:LEU:HD23	1.85	0.58
2:B:98:ARG:HG3	2:B:98:ARG:HH11	1.68	0.58
1:A:73:VAL:O	1:A:73:VAL:HG12	2.04	0.58

Continued on next page...

Continued from previous page...

Atom-1	Atom-2	Interatomic distance (Å)	Clash overlap (Å)
1:A:64:LEU:O	1:A:65:LYS:HB2	2.04	0.57
2:B:227:LEU:HD21	2:B:262:VAL:CG1	2.35	0.57
1:A:52:ILE:HD13	1:A:72:LEU:HD21	1.87	0.56
1:A:56:VAL:HG21	1:A:68:VAL:HG22	1.86	0.56
1:A:265:VAL:O	1:A:268:PRO:HD2	2.06	0.55
2:B:45:LEU:C	2:B:45:LEU:HD23	2.27	0.55
2:B:68:LEU:HA	2:B:72:GLU:OE1	2.06	0.55
2:B:28:LYS:HD3	2:B:29:ALA:N	2.21	0.55
1:A:72:LEU:C	1:A:74:GLY:H	2.10	0.54
1:A:91:ASN:N	1:A:92:PRO:CD	2.68	0.54
2:B:18:GLY:HA3	2:B:65:LEU:O	2.08	0.54
1:A:152:TRP:CZ3	1:A:286:PRO:HG3	2.41	0.53
1:A:44:VAL:HG22	1:A:267:ILE:HD12	1.90	0.53
2:B:285:GLU:HG3	5:B:905:HOH:O	2.07	0.53
1:A:254:VAL:HG21	1:A:266:LEU:CD1	2.16	0.53
2:B:27:LEU:HD23	2:B:74:ILE:HD13	1.91	0.53
2:B:58:GLU:OE2	2:B:77:THR:HG23	2.08	0.53
2:B:79:TYR:OH	2:B:285:GLU:HG2	2.08	0.53
1:A:65:LYS:O	1:A:69:LYS:HG3	2.09	0.53
2:B:49:ARG:HG3	2:B:50:ASP:N	2.23	0.53
1:A:197:HIS:CD2	1:A:197:HIS:H	2.27	0.53
2:B:17:ARG:O	2:B:19:ARG:HG2	2.09	0.53
2:B:204:ARG:O	2:B:207:GLU:HG2	2.08	0.52
2:B:146:ARG:O	2:B:150:GLU:HG3	2.09	0.52
2:B:193:GLN:HE21	2:B:193:GLN:N	1.97	0.52
2:B:247:LEU:HD12	2:B:270:ALA:HB1	1.92	0.52
2:B:196:GLU:HB2	2:B:197:PRO:HD3	1.91	0.52
2:B:21:ARG:NH1	2:B:61:GLY:O	2.43	0.51
2:B:66:GLU:O	2:B:67:SER:CB	2.57	0.51
2:B:59:ALA:O	2:B:60:LEU:C	2.48	0.51
1:A:66:GLU:HA	1:A:69:LYS:HD2	1.93	0.51
1:A:302:LEU:O	1:A:303:GLU:HB2	2.11	0.51
1:A:80:GLU:OE1	1:A:80:GLU:CA	2.59	0.51
2:B:54:ARG:HD3	2:B:54:ARG:O	2.11	0.50
2:B:21:ARG:NH2	2:B:63:GLN:HE21	2.09	0.50
1:A:149:LEU:HB2	5:A:925:HOH:O	2.11	0.50
1:A:87:LYS:O	1:A:87:LYS:HD3	2.12	0.49
2:B:227:LEU:HD21	2:B:262:VAL:HG13	1.93	0.49
1:A:138:GLY:HA3	1:A:191:ASP:O	2.13	0.49
2:B:102:PHE:CE2	2:B:211:PRO:HG3	2.47	0.49
2:B:41:ALA:O	2:B:42:ASP:HB2	2.13	0.49

Continued on next page...

Continued from previous page...

Atom-1	Atom-2	Interatomic distance (Å)	Clash overlap (Å)
1:A:63:ASP:C	1:A:64:LEU:O	2.50	0.49
2:B:163:GLU:HG2	2:B:167:SER:HB3	1.94	0.49
1:A:39:LEU:HD12	1:A:53:LEU:HD21	1.94	0.48
1:A:46:LEU:HD13	2:B:36:ARG:HG2	1.95	0.48
2:B:18:GLY:HA2	2:B:64:VAL:O	2.14	0.48
1:A:266:LEU:O	1:A:270:VAL:HG23	2.14	0.48
1:A:82:ARG:NH1	1:A:92:PRO:O	2.46	0.48
2:B:65:LEU:HB3	2:B:66:GLU:H	1.39	0.48
2:B:96:LYS:HE3	2:B:98:ARG:O	2.14	0.48
1:A:82:ARG:HH11	1:A:82:ARG:HG3	1.79	0.47
1:A:102:GLY:HA3	1:A:222:LYS:HG3	1.96	0.47
1:A:27:ASN:O	1:A:31:VAL:HG23	2.13	0.47
2:B:25:GLU:O	2:B:28:LYS:HG3	2.15	0.47
1:A:266:LEU:HD13	1:A:277:ILE:HD13	1.96	0.47
1:A:40:LEU:HD13	2:B:39:MET:HE3	1.95	0.47
2:B:69:THR:HG23	2:B:72:GLU:H	1.79	0.47
2:B:261:HIS:HD2	5:B:862:HOH:O	1.96	0.47
1:A:199:LYS:HE3	5:B:932:HOH:O	2.14	0.47
1:A:50:GLU:OE1	2:B:36:ARG:NH2	2.46	0.47
2:B:50:ASP:HB2	5:B:1036:HOH:O	2.15	0.47
1:A:72:LEU:C	1:A:74:GLY:N	2.68	0.46
2:B:45:LEU:O	2:B:45:LEU:HD23	2.15	0.46
1:A:257:LEU:HD12	1:A:280:VAL:HB	1.96	0.46
1:A:78:PRO:HG3	1:A:270:VAL:CG1	2.46	0.46
2:B:204:ARG:HH11	2:B:207:GLU:HG3	1.81	0.46
2:B:54:ARG:C	2:B:54:ARG:HD3	2.36	0.46
2:B:98:ARG:HH21	2:B:100:LEU:CD1	2.29	0.45
2:B:98:ARG:NH2	2:B:100:LEU:HB2	2.29	0.45
1:A:62:LYS:HG3	1:A:63:ASP:H	1.82	0.45
2:B:25:GLU:HA	2:B:28:LYS:HG2	1.99	0.45
2:B:49:ARG:NH2	2:B:53:GLU:HG3	2.33	0.44
1:A:85:LEU:O	1:A:90:PHE:HB2	2.17	0.44
1:A:42:ALA:O	1:A:43:ASP:HB2	2.17	0.44
2:B:21:ARG:NH1	2:B:63:GLN:N	2.65	0.44
2:B:113:THR:HG22	2:B:117:LYS:HE3	1.99	0.44
2:B:83:LYS:HE3	5:B:905:HOH:O	2.17	0.44
1:A:134:MET:SD	1:A:161:ILE:HD11	2.58	0.43
1:A:35:LEU:CD2	1:A:68:VAL:HG21	2.49	0.43
2:B:98:ARG:NH2	2:B:100:LEU:CD1	2.80	0.43
2:B:133:ALA:HB1	5:B:791:HOH:O	2.18	0.43
2:B:34:ILE:CD1	2:B:78:VAL:HG21	2.30	0.43

Continued on next page...

Continued from previous page...

Atom-1	Atom-2	Interatomic distance (Å)	Clash overlap (Å)
1:A:137:ALA:HA	1:A:149:LEU:HD23	1.99	0.43
1:A:65:LYS:HB3	1:A:65:LYS:HE3	1.84	0.43
2:B:69:THR:OG1	2:B:70:PRO:HD2	2.19	0.43
1:A:124:ARG:HA	1:A:127:GLN:HG2	2.01	0.42
2:B:157:LEU:C	2:B:157:LEU:HD23	2.40	0.42
1:A:35:LEU:HD21	1:A:68:VAL:HG21	2.01	0.42
1:A:62:LYS:HG3	1:A:63:ASP:N	2.34	0.42
2:B:290:ARG:HD2	5:B:1012:HOH:O	2.19	0.42
1:A:199:LYS:HE2	5:A:931:HOH:O	2.19	0.42
2:B:260:ARG:HD2	2:B:265:LYS:O	2.19	0.42
1:A:72:LEU:HD22	1:A:267:ILE:HD13	2.00	0.42
2:B:21:ARG:NH1	2:B:62:LYS:HA	2.35	0.41
1:A:73:VAL:O	1:A:73:VAL:CG1	2.68	0.41
2:B:227:LEU:HD21	2:B:262:VAL:HG11	2.01	0.41
1:A:76:LEU:O	1:A:77:GLU:HB2	2.21	0.41
1:A:52:ILE:O	1:A:56:VAL:HG23	2.21	0.41
1:A:220:GLU:OE2	1:A:221:PRO:HA	2.21	0.41
2:B:21:ARG:HH12	2:B:62:LYS:HA	1.86	0.41
1:A:202:LEU:HD12	5:A:930:HOH:O	2.20	0.40
2:B:227:LEU:CD2	2:B:262:VAL:CG1	2.99	0.40
1:A:110:VAL:HA	1:A:195:ARG:O	2.21	0.40
2:B:45:LEU:CD2	2:B:45:LEU:C	2.89	0.40
2:B:154:VAL:HA	2:B:155:PRO:HD3	1.90	0.40
1:A:63:ASP:O	1:A:64:LEU:O	2.40	0.40
1:A:261:ALA:HB3	5:A:860:HOH:O	2.21	0.40
1:A:301:LEU:HD23	1:A:301:LEU:C	2.42	0.40
2:B:24:GLU:HA	2:B:24:GLU:OE1	2.21	0.40
2:B:130:LEU:HB2	2:B:181:ARG:HG3	2.03	0.40
2:B:67:SER:O	2:B:68:LEU:HB2	2.22	0.40
2:B:195:ASP:OD2	2:B:197:PRO:HD2	2.22	0.40
1:A:32:LEU:HD22	1:A:53:LEU:HD12	2.03	0.40

There are no symmetry-related clashes.

5.3 Torsion angles

5.3.1 Protein backbone

In the following table, the Percentiles column shows the percent Ramachandran outliers of the chain as a percentile score with respect to all X-ray entries followed by that with respect to entries of similar resolution.

The Analysed column shows the number of residues for which the backbone conformation was analysed, and the total number of residues.

Mol	Chain	Analysed	Favoured	Allowed	Outliers	Percentiles	
1	A	275/304 (90%)	258 (94%)	11 (4%)	6 (2%)	8	1
2	B	280/300 (93%)	267 (95%)	8 (3%)	5 (2%)	11	2
All	All	555/604 (92%)	525 (95%)	19 (3%)	11 (2%)	9	2

All (11) Ramachandran outliers are listed below:

Mol	Chain	Res	Type
1	A	94	LYS
1	A	95	PRO
2	B	18	GLY
2	B	60	LEU
2	B	65	LEU
1	A	64	LEU
2	B	68	LEU
1	A	96	LYS
2	B	67	SER
1	A	91	ASN
1	A	248	GLY

5.3.2 Protein sidechains ⓘ

In the following table, the Percentiles column shows the percent sidechain outliers of the chain as a percentile score with respect to all X-ray entries followed by that with respect to entries of similar resolution.

The Analysed column shows the number of residues for which the sidechain conformation was analysed, and the total number of residues.

Mol	Chain	Analysed	Rotameric	Outliers	Percentiles	
1	A	216/242 (89%)	211 (98%)	5 (2%)	58	51
2	B	220/238 (92%)	210 (96%)	10 (4%)	34	21
All	All	436/480 (91%)	421 (97%)	15 (3%)	44	33

All (15) residues with a non-rotameric sidechain are listed below:

Mol	Chain	Res	Type
1	A	28	LEU
1	A	35	LEU

Continued on next page...

Continued from previous page...

Mol	Chain	Res	Type
1	A	64	LEU
1	A	80	GLU
1	A	162	GLN
2	B	23	THR
2	B	24	GLU
2	B	26	ASP
2	B	28	LYS
2	B	54	ARG
2	B	66	GLU
2	B	98	ARG
2	B	193	GLN
2	B	202	LEU
2	B	285	GLU

Some sidechains can be flipped to improve hydrogen bonding and reduce clashes. All (7) such sidechains are listed below:

Mol	Chain	Res	Type
1	A	111	ASN
1	A	162	GLN
1	A	197	HIS
1	A	239	GLN
2	B	63	GLN
2	B	193	GLN
2	B	261	HIS

5.3.3 RNA ⓘ

There are no RNA molecules in this entry.

5.4 Non-standard residues in protein, DNA, RNA chains ⓘ

There are no non-standard protein/DNA/RNA residues in this entry.

5.5 Carbohydrates ⓘ

There are no carbohydrates in this entry.

5.6 Ligand geometry

Of 4 ligands modelled in this entry, 2 are monoatomic - leaving 2 for Mogul analysis.

In the following table, the Counts columns list the number of bonds (or angles) for which Mogul statistics could be retrieved, the number of bonds (or angles) that are observed in the model and the number of bonds (or angles) that are defined in the chemical component dictionary. The Link column lists molecule types, if any, to which the group is linked. The Z score for a bond length (or angle) is the number of standard deviations the observed value is removed from the expected value. A bond length (or angle) with $|Z| > 2$ is considered an outlier worth inspection. RMSZ is the root-mean-square of all Z scores of the bond lengths (or angles).

Mol	Type	Chain	Res	Link	Bond lengths			Bond angles		
					Counts	RMSZ	# Z > 2	Counts	RMSZ	# Z > 2
4	GCP	A	500	3	26,34,34	1.55	4 (15%)	34,54,54	2.81	17 (50%)
4	GCP	B	600	3	26,34,34	1.52	6 (23%)	34,54,54	2.96	19 (55%)

In the following table, the Chirals column lists the number of chiral outliers, the number of chiral centers analysed, the number of these observed in the model and the number defined in the chemical component dictionary. Similar counts are reported in the Torsion and Rings columns. '-' means no outliers of that kind were identified.

Mol	Type	Chain	Res	Link	Chirals	Torsions	Rings
4	GCP	A	500	3	-	0/15/38/38	0/3/3/3
4	GCP	B	600	3	-	0/15/38/38	0/3/3/3

All (10) bond length outliers are listed below:

Mol	Chain	Res	Type	Atoms	Z	Observed(Å)	Ideal(Å)
4	A	500	GCP	PB-O1B	-3.16	1.43	1.51
4	B	600	GCP	PB-O1B	-2.90	1.44	1.51
4	B	600	GCP	PB-O3A	-2.88	1.55	1.58
4	B	600	GCP	PB-O2B	-2.05	1.51	1.56
4	B	600	GCP	C2-N1	2.20	1.39	1.35
4	A	500	GCP	C2-N1	2.36	1.39	1.35
4	B	600	GCP	PG-O3G	2.48	1.60	1.54
4	A	500	GCP	PG-O3G	3.12	1.62	1.54
4	B	600	GCP	C6-N1	4.05	1.40	1.33
4	A	500	GCP	C6-N1	4.27	1.41	1.33

All (36) bond angle outliers are listed below:

Mol	Chain	Res	Type	Atoms	Z	Observed(°)	Ideal(°)
4	B	600	GCP	C5-C6-N1	-7.73	113.01	123.59

Continued on next page...

Continued from previous page...

Mol	Chain	Res	Type	Atoms	Z	Observed(°)	Ideal(°)
4	A	500	GCP	C5-C6-N1	-7.46	113.39	123.59
4	A	500	GCP	O4'-C4'-C5'	-5.52	89.57	109.32
4	B	600	GCP	O4'-C4'-C5'	-5.04	91.31	109.32
4	A	500	GCP	O2G-PG-O1G	-4.06	102.02	112.40
4	A	500	GCP	O1B-PB-C3B	-3.76	99.56	109.02
4	B	600	GCP	O4'-C1'-N9	-3.41	100.96	108.10
4	A	500	GCP	O2A-PA-O5'	-3.25	92.09	108.46
4	B	600	GCP	N3-C2-N1	-3.12	122.69	127.44
4	B	600	GCP	O3G-PG-O1G	-3.05	104.61	112.40
4	A	500	GCP	N3-C2-N1	-3.03	122.83	127.44
4	A	500	GCP	O3'-C3'-C2'	-2.92	102.32	111.83
4	B	600	GCP	O2G-PG-O1G	-2.76	105.34	112.40
4	B	600	GCP	O2A-PA-O5'	-2.73	94.68	108.46
4	B	600	GCP	C6-C5-C4	-2.70	117.67	120.90
4	A	500	GCP	C6-C5-C4	-2.58	117.81	120.90
4	B	600	GCP	O1B-PB-C3B	-2.44	102.89	109.02
4	A	500	GCP	O4'-C1'-N9	-2.37	103.13	108.10
4	B	600	GCP	O3'-C3'-C2'	-2.11	104.97	111.83
4	A	500	GCP	O3G-PG-O1G	-2.07	107.11	112.40
4	A	500	GCP	O3G-PG-C3B	2.12	111.54	106.40
4	B	600	GCP	O2'-C2'-C3'	2.14	118.80	111.83
4	A	500	GCP	O2'-C2'-C3'	2.21	119.03	111.83
4	A	500	GCP	C4'-O4'-C1'	2.22	112.16	109.72
4	B	600	GCP	O5'-PA-O1A	2.46	119.16	109.62
4	A	500	GCP	O2B-PB-C3B	2.79	119.03	106.88
4	B	600	GCP	C2'-C1'-N9	2.90	118.73	114.29
4	B	600	GCP	O2B-PB-C3B	3.02	120.05	106.88
4	A	500	GCP	O2G-PG-C3B	3.18	114.11	106.40
4	B	600	GCP	O2G-PG-C3B	3.37	114.58	106.40
4	B	600	GCP	C4'-O4'-C1'	3.40	113.45	109.72
4	B	600	GCP	O2B-PB-O1B	3.89	122.36	110.12
4	A	500	GCP	O2B-PB-O1B	4.25	123.50	110.12
4	B	600	GCP	O3G-PG-C3B	4.71	117.83	106.40
4	A	500	GCP	C6-N1-C2	5.99	124.25	115.94
4	B	600	GCP	C6-N1-C2	6.41	124.83	115.94

There are no chirality outliers.

There are no torsion outliers.

There are no ring outliers.

No monomer is involved in short contacts.

5.7 Other polymers [i](#)

There are no such residues in this entry.

5.8 Polymer linkage issues [i](#)

There are no chain breaks in this entry.

6 Fit of model and data

6.1 Protein, DNA and RNA chains

In the following table, the column labelled ‘#RSRZ> 2’ contains the number (and percentage) of RSRZ outliers, followed by percent RSRZ outliers for the chain as percentile scores relative to all X-ray entries and entries of similar resolution. The OWAB column contains the minimum, median, 95th percentile and maximum values of the occupancy-weighted average B-factor per residue. The column labelled ‘Q< 0.9’ lists the number of (and percentage) of residues with an average occupancy less than 0.9.

Mol	Chain	Analysed	<RSRZ>	#RSRZ>2	OWAB(Å ²)	Q<0.9
1	A	277/304 (91%)	0.57	29 (10%) 8 9	9, 19, 40, 46	0
2	B	282/300 (94%)	0.44	28 (9%) 9 10	8, 18, 40, 47	0
All	All	559/604 (92%)	0.51	57 (10%) 9 10	8, 19, 40, 47	0

All (57) RSRZ outliers are listed below:

Mol	Chain	Res	Type	RSRZ
1	A	79	ASP	12.3
2	B	65	LEU	9.8
1	A	92	PRO	7.7
2	B	60	LEU	7.6
2	B	66	GLU	6.9
1	A	95	PRO	6.4
1	A	87	LYS	5.0
2	B	14	GLY	4.9
1	A	27	ASN	4.8
1	A	91	ASN	4.7
1	A	28	LEU	4.6
1	A	75	MET	4.5
2	B	21	ARG	4.4
1	A	78	PRO	4.4
2	B	26	ASP	4.4
1	A	89	GLY	4.2
2	B	68	LEU	4.1
1	A	94	LYS	4.1
2	B	295	GLY	3.9
1	A	30	GLU	3.9
1	A	88	LEU	3.7
1	A	62	LYS	3.6
2	B	67	SER	3.5
2	B	58	GLU	3.5

Continued on next page...

Continued from previous page...

Mol	Chain	Res	Type	RSRZ
1	A	90	PHE	3.5
2	B	28	LYS	3.4
2	B	98	ARG	3.3
2	B	24	GLU	3.3
1	A	86	ARG	3.3
1	A	64	LEU	3.2
2	B	15	ARG	3.1
2	B	23	THR	3.0
1	A	35	LEU	3.0
2	B	27	LEU	3.0
1	A	97	PRO	2.9
1	A	93	GLN	2.9
1	A	80	GLU	2.9
1	A	85	LEU	2.8
1	A	76	LEU	2.8
2	B	63	GLN	2.8
1	A	65	LYS	2.7
2	B	64	VAL	2.7
1	A	63	ASP	2.7
1	A	82	ARG	2.6
2	B	30	THR	2.6
2	B	22	ILE	2.5
2	B	294	MET	2.3
1	A	69	LYS	2.2
1	A	29	GLU	2.2
1	A	34	GLU	2.2
2	B	97	ASP	2.1
2	B	25	GLU	2.1
2	B	18	GLY	2.1
2	B	17	ARG	2.1
2	B	16	LEU	2.1
2	B	32	ARG	2.0
2	B	293	GLY	2.0

6.2 Non-standard residues in protein, DNA, RNA chains ⓘ

There are no non-standard protein/DNA/RNA residues in this entry.

6.3 Carbohydrates ⓘ

There are no carbohydrates in this entry.

6.4 Ligands [i](#)

In the following table, the Atoms column lists the number of modelled atoms in the group and the number defined in the chemical component dictionary. LLDF column lists the quality of electron density of the group with respect to its neighbouring residues in protein, DNA or RNA chains. The B-factors column lists the minimum, median, 95th percentile and maximum values of B factors of atoms in the group. The column labelled 'Q< 0.9' lists the number of atoms with occupancy less than 0.9.

Mol	Type	Chain	Res	Atoms	RSCC	RSR	LLDF	B-factors(Å ²)	Q<0.9
3	MG	B	601	1/1	0.99	0.19	5.71	15,15,15,15	0
3	MG	A	501	1/1	0.99	0.19	4.97	15,15,15,15	0
4	GCP	A	500	32/32	0.96	0.12	0.94	7,12,15,18	0
4	GCP	B	600	32/32	0.96	0.12	0.29	8,12,14,15	0

6.5 Other polymers [i](#)

There are no such residues in this entry.