



Full wwPDB X-ray Structure Validation Report ⓘ

Jan 31, 2016 – 10:01 PM GMT

PDB ID : 1RS6
Title : Rat neuronal NOS heme domain with D-lysine-D-nitroarginine amide bound
Authors : Flinspach, M.; Li, H.; Jamal, J.; Yang, W.; Huang, H.; Silverman, R.B.; Poulos, T.L.
Deposited on : 2003-12-09
Resolution : 1.95 Å(reported)

This is a Full wwPDB X-ray Structure Validation Report for a publicly released PDB entry.
We welcome your comments at validation@mail.wwpdb.org
A user guide is available at
<http://wwpdb.org/validation/2016/XrayValidationReportHelp>
with specific help available everywhere you see the ⓘ symbol.

The following versions of software and data (see [references ⓘ](#)) were used in the production of this report:

MolProbity : 4.02b-467
Mogul : 1.7 (RC4), CSD as536be (2015)
Xtriage (Phenix) : 1.9-1692
EDS : rb-20026688
Percentile statistics : 20151230.v01 (using entries in the PDB archive December 30th 2015)
Refmac : 5.8.0135
CCP4 : 6.5.0
Ideal geometry (proteins) : Engh & Huber (2001)
Ideal geometry (DNA, RNA) : Parkinson et al. (1996)
Validation Pipeline (wwPDB-VP) : trunk26865

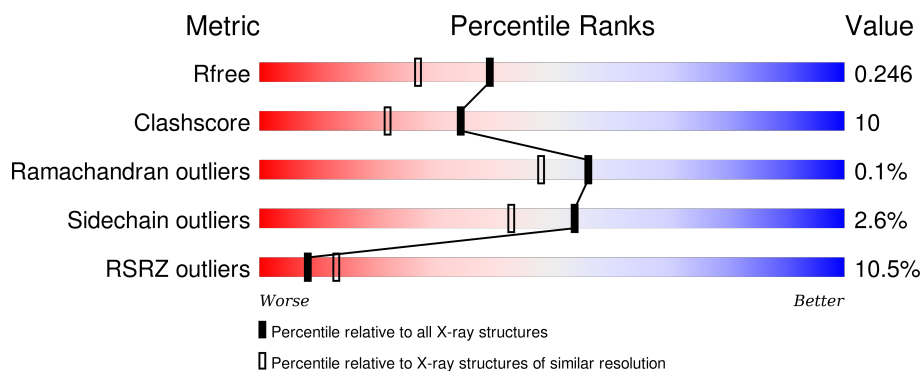
1 Overall quality at a glance

The following experimental techniques were used to determine the structure:

X-RAY DIFFRACTION

The reported resolution of this entry is 1.95 Å.

Percentile scores (ranging between 0-100) for global validation metrics of the entry are shown in the following graphic. The table shows the number of entries on which the scores are based.



Metric	Whole archive (#Entries)	Similar resolution (#Entries, resolution range(Å))
R_{free}	91344	1833 (1.96-1.96)
Clashscore	102246	1953 (1.96-1.96)
Ramachandran outliers	100387	1936 (1.96-1.96)
Sidechain outliers	100360	1936 (1.96-1.96)
RSRZ outliers	91569	1835 (1.96-1.96)

The table below summarises the geometric issues observed across the polymeric chains and their fit to the electron density. The red, orange, yellow and green segments on the lower bar indicate the fraction of residues that contain outliers for ≥ 3 , 2, 1 and 0 types of geometric quality criteria. A grey segment represents the fraction of residues that are not modelled. The numeric value for each fraction is indicated below the corresponding segment, with a dot representing fractions $\leq 5\%$. The upper red bar (where present) indicates the fraction of residues that have poor fit to the electron density. The numeric value is given above the bar.

Mol	Chain	Length	Quality of chain
1	A	421	
1	B	421	

The following table lists non-polymeric compounds, carbohydrate monomers and non-standard residues in protein, DNA, RNA chains that are outliers for geometric or electron-density-fit criteria:

Mol	Type	Chain	Res	Chirality	Geometry	Clashes	Electron density
2	MTL	A	870	-	-	-	X
2	MTL	B	871	-	-	-	X

2 Entry composition [i](#)

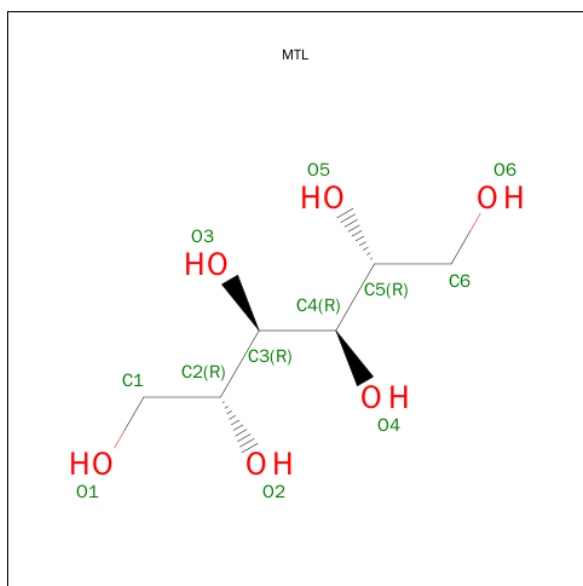
There are 8 unique types of molecules in this entry. The entry contains 7401 atoms, of which 0 are hydrogens and 0 are deuteriums.

In the tables below, the ZeroOcc column contains the number of atoms modelled with zero occupancy, the AltConf column contains the number of residues with at least one atom in alternate conformation and the Trace column contains the number of residues modelled with at most 2 atoms.

- Molecule 1 is a protein called Nitric-oxide synthase, brain.

Mol	Chain	Residues	Atoms					ZeroOcc	AltConf	Trace
1	A	407	Total	C	N	O	S	0	2	0
			3315	2121	566	606	22			
1	B	410	Total	C	N	O	S	0	2	0
			3343	2138	573	611	21			

- Molecule 2 is D-MANNITOL (three-letter code: MTL) (formula: C₆H₁₄O₆).



Mol	Chain	Residues	Atoms			ZeroOcc	AltConf
2	A	1	Total	C	O	0	0
			12	6	6		
2	B	1	Total	C	O	0	0
			12	6	6		

- Molecule 3 is ACETATE ION (three-letter code: ACT) (formula: C₂H₃O₂).



Mol	Chain	Residues	Atoms			ZeroOcc	AltConf
3	A	1	Total	C	O	0	0
			4	2	2		
3	B	1	Total	C	O	0	0
			4	2	2		

- Molecule 4 is ZINC ION (three-letter code: ZN) (formula: Zn).

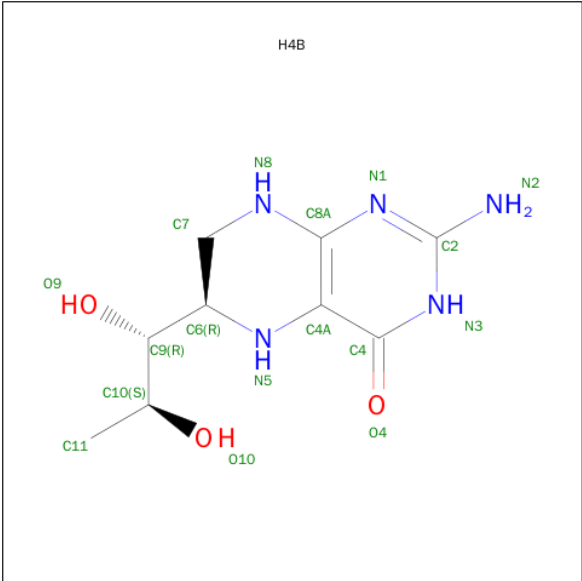
Mol	Chain	Residues	Atoms		ZeroOcc	AltConf
4	A	1	Total	Zn	0	0
			1	1		

- Molecule 5 is PROTOPORPHYRIN IX CONTAINING FE (three-letter code: HEM) (formula: C₃₄H₃₂FeN₄O₄).



Mol	Chain	Residues	Atoms					ZeroOcc	AltConf
5	A	1	Total	C	Fe	N	O	0	0
			43	34	1	4	4		
5	B	1	Total	C	Fe	N	O	0	0
			43	34	1	4	4		

- Molecule 6 is 5,6,7,8-TETRAHYDROBIOPTERIN (three-letter code: H4B) (formula: $C_9H_{15}N_5O_3$).



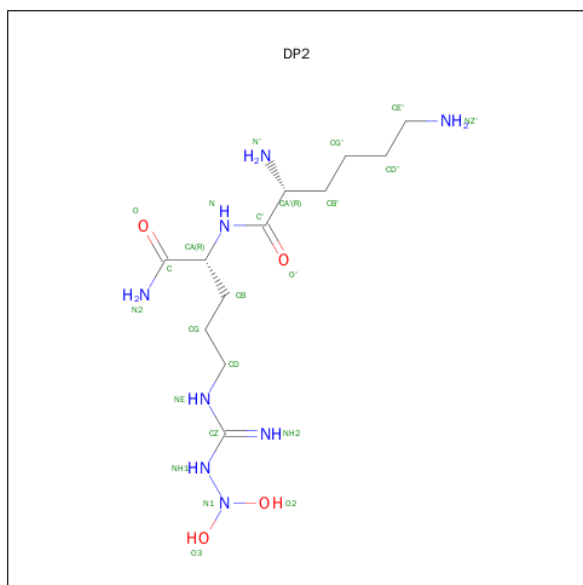
Mol	Chain	Residues	Atoms				ZeroOcc	AltConf
6	A	1	Total	C	N	O	0	0
			17	9	5	3		

Continued on next page...

Continued from previous page...

Mol	Chain	Residues	Atoms				ZeroOcc	AltConf
6	B	1	Total	C	N	O	0	0
			17	9	5	3		

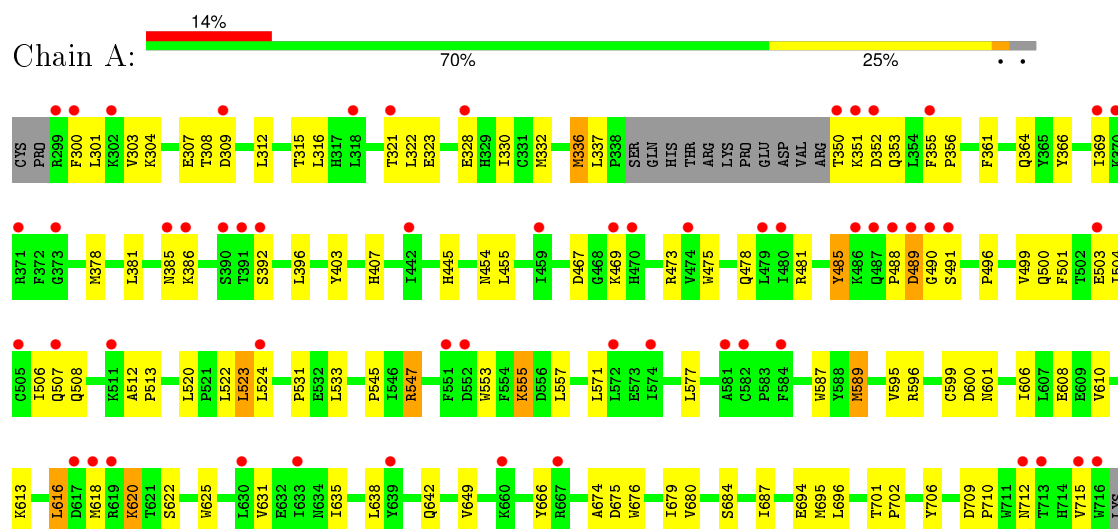
- Molecule 7 is L-LYSYL-N 5 -[(Z)-(2,2-DIHYDROXYHYDRAZINO)(IMINO)METHYL]-L-ORNITHINAMIDE (three-letter code: DP2) (formula: C₁₂H₂₈N₈O₄).



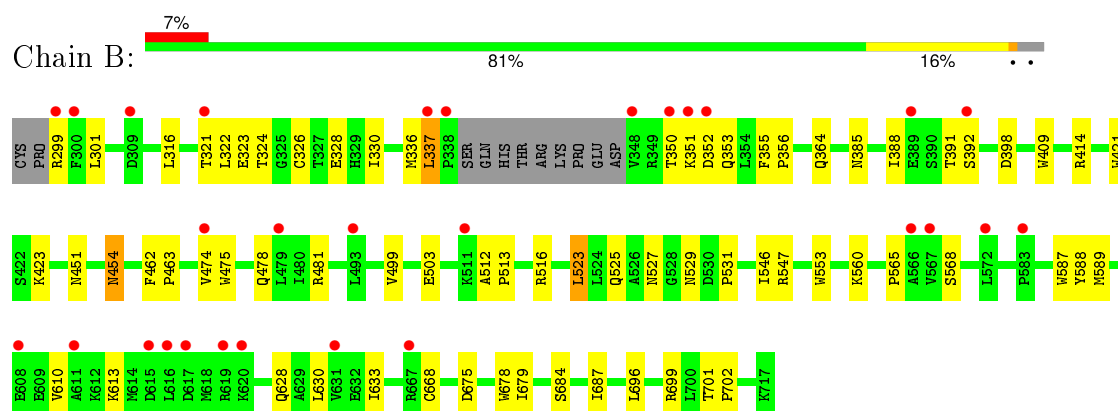
3 Residue-property plots

These plots are drawn for all protein, RNA and DNA chains in the entry. The first graphic for a chain summarises the proportions of errors displayed in the second graphic. The second graphic shows the sequence view annotated by issues in geometry and electron density. Residues are color-coded according to the number of geometric quality criteria for which they contain at least one outlier: green = 0, yellow = 1, orange = 2 and red = 3 or more. A red dot above a residue indicates a poor fit to the electron density ($\text{RSRZ} > 2$). Stretches of 2 or more consecutive residues without any outlier are shown as a green connector. Residues present in the sample, but not in the model, are shown in grey.

• Molecule 1: Nitric-oxide synthase, brain



• Molecule 1: Nitric-oxide synthase, brain



4 Data and refinement statistics

Property	Value	Source
Space group	P 21 21 21	Depositor
Cell constants a, b, c, α , β , γ	51.59Å 109.81Å 164.67Å 90.00° 90.00° 90.00°	Depositor
Resolution (Å)	27.08 – 1.95 27.08 – 1.90	Depositor EDS
% Data completeness (in resolution range)	92.4 (27.08-1.95) 91.8 (27.08-1.90)	Depositor EDS
R_{merge}	0.06	Depositor
R_{sym}	0.06	Depositor
$\langle I/\sigma(I) \rangle$ ¹	1.47 (at 1.89Å)	Xtriage
Refinement program	CNS 1.1	Depositor
R, R_{free}	0.221 , 0.254 0.214 , 0.246	Depositor DCC
R_{free} test set	3168 reflections (5.23%)	DCC
Wilson B-factor (Å ²)	27.9	Xtriage
Anisotropy	0.736	Xtriage
Bulk solvent k_{sol} (e/Å ³), B_{sol} (Å ²)	0.36 , 43.9	EDS
Estimated twinning fraction	No twinning to report.	Xtriage
L-test for twinning ²	$\langle L \rangle = 0.50$, $\langle L^2 \rangle = 0.33$	Xtriage
Outliers	1 of 68862 reflections (0.001%)	Xtriage
F_o, F_c correlation	0.95	EDS
Total number of atoms	7401	wwPDB-VP
Average B, all atoms (Å ²)	38.0	wwPDB-VP

Xtriage's analysis on translational NCS is as follows: *The largest off-origin peak in the Patterson function is 5.04% of the height of the origin peak. No significant pseudotranslation is detected.*

¹Intensities estimated from amplitudes.

²Theoretical values of $\langle |L| \rangle$, $\langle L^2 \rangle$ for acentric reflections are 0.5, 0.375 respectively for untwinned datasets, and 0.333, 0.2 for perfectly twinned datasets.

5 Model quality [i](#)

5.1 Standard geometry [i](#)

Bond lengths and bond angles in the following residue types are not validated in this section: ZN, DP2, MTL, ACT, HEM, H4B

The Z score for a bond length (or angle) is the number of standard deviations the observed value is removed from the expected value. A bond length (or angle) with $|Z| > 5$ is considered an outlier worth inspection. RMSZ is the root-mean-square of all Z scores of the bond lengths (or angles).

Mol	Chain	Bond lengths		Bond angles	
		RMSZ	$\# Z > 5$	RMSZ	$\# Z > 5$
1	A	0.45	0/3418	0.67	1/4637 (0.0%)
1	B	0.47	0/3446	0.68	2/4672 (0.0%)
All	All	0.46	0/6864	0.67	3/9309 (0.0%)

There are no bond length outliers.

All (3) bond angle outliers are listed below:

Mol	Chain	Res	Type	Atoms	Z	Observed(°)	Ideal(°)
1	B	589	MET	N-CA-C	-5.91	95.04	111.00
1	B	326	CYS	CA-CB-SG	5.88	124.59	114.00
1	A	589	MET	N-CA-C	-5.46	96.26	111.00

There are no chirality outliers.

There are no planarity outliers.

5.2 Too-close contacts [i](#)

In the following table, the Non-H and H(model) columns list the number of non-hydrogen atoms and hydrogen atoms in the chain respectively. The H(added) column lists the number of hydrogen atoms added and optimized by MolProbity. The Clashes column lists the number of clashes within the asymmetric unit, whereas Symm-Clashes lists symmetry related clashes.

Mol	Chain	Non-H	H(model)	H(added)	Clashes	Symm-Clashes
1	A	3315	0	3223	89	0
1	B	3343	0	3258	51	0
2	A	12	0	14	1	0
2	B	12	0	14	0	0
3	A	4	0	3	0	0
3	B	4	0	3	0	0

Continued on next page...

Continued from previous page...

Mol	Chain	Non-H	H(model)	H(added)	Clashes	Symm-Clashes
4	A	1	0	0	0	0
5	A	43	0	30	2	0
5	B	43	0	30	3	0
6	A	17	0	15	0	0
6	B	17	0	15	1	0
7	A	24	0	28	1	0
7	B	24	0	27	0	0
8	A	230	0	0	7	0
8	B	312	0	0	8	0
All	All	7401	0	6660	135	0

The all-atom clashscore is defined as the number of clashes found per 1000 atoms (including hydrogen atoms). The all-atom clashscore for this structure is 10.

All (135) close contacts within the same asymmetric unit are listed below, sorted by their clash magnitude.

Atom-1	Atom-2	Interatomic distance (Å)	Clash overlap (Å)
1:B:523:LEU:HD22	1:B:531:PRO:HB2	1.43	1.00
1:A:523:LEU:HD22	1:A:531:PRO:HB2	1.55	0.89
1:B:350:THR:HB	1:B:353:GLN:OE1	1.79	0.82
1:B:350:THR:HG22	1:B:352:ASP:H	1.47	0.78
1:A:350:THR:HB	1:A:353:GLN:HG3	1.64	0.78
1:B:610:VAL:HG21	1:B:633:ILE:HD11	1.68	0.74
1:A:350:THR:HG22	1:A:352:ASP:H	1.53	0.73
1:B:699:ARG:HB3	8:B:1090:HOH:O	1.90	0.71
1:A:332:MET:HE1	1:B:301:LEU:HD22	1.75	0.69
1:B:478:GLN:HB2	1:B:481:ARG:HG3	1.77	0.67
1:A:696:LEU:HD22	1:B:330:ILE:HD11	1.78	0.65
1:A:478:GLN:HB2	1:A:481:ARG:HG3	1.80	0.64
1:A:350:THR:HB	1:A:353:GLN:CG	2.30	0.62
1:B:299:ARG:HB3	1:B:299:ARG:NH1	2.14	0.62
1:B:475:TRP:HB2	1:B:523:LEU:HB3	1.83	0.61
1:A:503:GLU:HG3	8:A:1013:HOH:O	2.00	0.60
1:A:545:PRO:HG2	1:A:547:ARG:NH1	2.16	0.60
1:A:467:ASP:OD1	1:A:469:LYS:HB2	2.02	0.60
1:B:668:CYS:HB3	8:B:998:HOH:O	2.02	0.59
1:B:355:PHE:N	1:B:356:PRO:HD2	2.17	0.59
1:A:303:VAL:HG13	1:A:694:GLU:HB2	1.84	0.59
1:B:351:LYS:HE2	1:B:392:SER:OG	2.03	0.59
1:B:299:ARG:HB3	1:B:299:ARG:HH11	1.68	0.59
1:A:308:THR:O	1:A:309:ASP:HB2	2.04	0.57

Continued on next page...

Continued from previous page...

Atom-1	Atom-2	Interatomic distance (Å)	Clash overlap (Å)
8:A:941:HOH:O	1:B:337:LEU:HD23	2.05	0.57
1:A:485:TYR:CE2	1:A:512:ALA:HB1	2.40	0.57
1:A:684:SER:HB3	1:A:687:ILE:HD11	1.87	0.56
1:B:337:LEU:N	1:B:337:LEU:HD23	2.21	0.56
1:A:307:GLU:HG3	8:B:951:HOH:O	2.03	0.56
1:A:553:TRP:CE3	1:A:613:LYS:HD3	2.40	0.56
1:B:699:ARG:HG2	8:B:1160:HOH:O	2.05	0.55
1:A:489:ASP:HB2	1:A:491:SER:OG	2.07	0.55
1:A:353:GLN:O	1:A:356:PRO:HD2	2.07	0.55
1:B:336:MET:HG2	1:B:337:LEU:HD22	1.89	0.55
1:A:330:ILE:HD11	1:B:696:LEU:HD22	1.89	0.55
1:A:396:LEU:HG	1:A:577:LEU:HD12	1.88	0.55
1:A:616:LEU:HD13	1:A:625:TRP:HB2	1.89	0.54
1:B:565:PRO:HB3	1:B:588:TYR:CZ	2.44	0.53
1:A:328:GLU:O	1:B:324:THR:HG23	2.08	0.52
1:A:555:LYS:HB3	1:A:555:LYS:HZ2	1.74	0.52
1:B:322:LEU:HD12	8:B:1090:HOH:O	2.09	0.52
5:A:750:HEM:HMC1	5:A:750:HEM:HBC2	1.91	0.52
1:A:485:TYR:HA	8:A:1099:HOH:O	2.10	0.51
1:A:606:ILE:O	1:A:610:VAL:HG23	2.09	0.51
1:A:330:ILE:HD11	1:B:696:LEU:HB3	1.92	0.50
1:A:675:ASP:O	1:A:679:ILE:HG12	2.12	0.50
1:A:321:THR:HG21	8:A:1107:HOH:O	2.10	0.49
1:A:321:THR:HG23	1:A:322:LEU:HG	1.94	0.49
1:A:638:LEU:O	1:A:642:GLN:HG3	2.11	0.49
1:A:620:LYS:HE3	1:A:622:SER:OG	2.13	0.49
1:A:488:PRO:C	1:A:490:GLY:H	2.16	0.49
1:A:715:VAL:HG23	1:A:715:VAL:O	2.12	0.49
1:B:391:THR:O	1:B:392:SER:HB2	2.12	0.49
1:A:351:LYS:HE2	1:A:392:SER:HA	1.94	0.49
1:A:488:PRO:C	1:A:490:GLY:N	2.66	0.49
1:A:485:TYR:HE2	1:A:512:ALA:HB1	1.78	0.49
1:A:522:LEU:O	1:A:533:LEU:HA	2.13	0.48
1:A:491:SER:HB2	8:A:1100:HOH:O	2.14	0.47
5:B:750:HEM:HBC2	5:B:750:HEM:CMC	2.44	0.47
1:A:304:LYS:O	1:A:694:GLU:HG3	2.15	0.47
5:A:750:HEM:CMC	5:A:750:HEM:HBC2	2.44	0.47
1:B:675:ASP:O	1:B:679:ILE:HG12	2.15	0.47
1:A:706:TYR:CE2	7:A:792:DP2:HD'2	2.50	0.47
1:A:303:VAL:CG1	1:A:694:GLU:O	2.63	0.47
1:A:496:PRO:O	1:A:499:VAL:HG23	2.14	0.46

Continued on next page...

Continued from previous page...

Atom-1	Atom-2	Interatomic distance (Å)	Clash overlap (Å)
1:A:524:LEU:O	1:A:531:PRO:HA	2.16	0.46
1:A:553:TRP:HZ3	1:A:557:LEU:HD11	1.81	0.46
1:A:300:PHE:CD2	1:A:315:THR:HG22	2.51	0.46
1:A:601:ASN:HB2	8:A:970:HOH:O	2.15	0.46
1:B:409:TRP:CE3	1:B:421:TRP:HA	2.50	0.46
1:A:571:LEU:C	1:A:571:LEU:HD23	2.36	0.46
1:A:488:PRO:O	1:A:490:GLY:N	2.49	0.46
1:B:587:TRP:H	5:B:750:HEM:HAB	1.80	0.46
1:A:545:PRO:HG2	1:A:547:ARG:HH11	1.81	0.45
1:B:388:ILE:O	1:B:392:SER:N	2.43	0.45
1:A:403:TYR:CE1	1:A:407:HIS:CE1	3.05	0.45
1:A:366:TYR:CD2	1:A:369:ILE:HD11	2.52	0.45
1:A:336:MET:HE1	8:A:989:HOH:O	2.16	0.45
1:B:525:GLN:HG3	1:B:529:ASN:O	2.17	0.45
1:A:608:GLU:HG3	1:A:618:MET:HE1	1.98	0.44
1:A:555:LYS:HB3	1:A:555:LYS:NZ	2.32	0.44
1:A:351:LYS:HE2	1:A:392:SER:CA	2.46	0.44
1:B:546:ILE:HG12	1:B:560:LYS:HA	1.99	0.44
1:B:462:PHE:HB3	1:B:463:PRO:HD2	1.99	0.44
1:A:350:THR:HB	1:A:353:GLN:CD	2.38	0.44
1:A:475:TRP:CE2	1:A:710:PRO:HB2	2.52	0.44
1:A:512:ALA:HA	1:A:513:PRO:HD3	1.88	0.44
5:B:750:HEM:HBC2	5:B:750:HEM:HMC1	2.00	0.44
1:A:674:ALA:HB3	1:A:695:MET:HB3	1.99	0.43
1:A:496:PRO:HA	1:A:499:VAL:HG23	2.00	0.43
1:B:355:PHE:CE1	1:B:385:ASN:HB2	2.54	0.43
1:A:631:VAL:HG11	1:B:628:GLN:HG2	1.99	0.43
1:A:676:TRP:CZ2	1:A:680:VAL:HG21	2.54	0.43
1:A:301:LEU:CD1	1:B:330:ILE:HD13	2.48	0.43
1:A:500:GLN:O	1:A:504:ILE:HG13	2.19	0.43
1:B:364:GLN:NE2	8:B:1119:HOH:O	2.52	0.43
1:B:684:SER:HB3	1:B:687:ILE:CG1	2.49	0.43
1:A:321:THR:HG23	1:A:322:LEU:N	2.34	0.43
1:A:366:TYR:HA	1:A:369:ILE:HG12	2.01	0.43
1:B:553:TRP:CH2	1:B:613:LYS:HB2	2.54	0.43
1:A:684:SER:HB3	1:A:687:ILE:CG1	2.49	0.43
1:B:398:ASP:HB2	8:B:1080:HOH:O	2.19	0.42
1:A:701:THR:HA	1:A:702:PRO:C	2.39	0.42
1:B:337:LEU:N	1:B:337:LEU:CD2	2.82	0.42
1:A:596:ARG:O	1:A:600:ASP:HB2	2.19	0.42
1:A:595:VAL:O	1:A:599:CYS:HB2	2.19	0.42

Continued on next page...

Continued from previous page...

Atom-1	Atom-2	Interatomic distance (Å)	Clash overlap (Å)
1:A:323:GLU:HA	1:B:328:GLU:O	2.19	0.42
1:B:299:ARG:CB	1:B:299:ARG:NH1	2.83	0.42
1:B:516:ARG:HG3	8:B:1033:HOH:O	2.19	0.42
1:A:687:ILE:HD13	1:B:630:LEU:HD22	2.01	0.42
1:B:414:ARG:HD3	1:B:678:TRP:CD2	2.55	0.42
1:A:361:PHE:O	1:A:364:GLN:HG2	2.19	0.42
1:B:323:GLU:O	1:B:699:ARG:HD3	2.20	0.42
1:A:501:PHE:HD2	1:A:520:LEU:HD13	1.84	0.41
1:A:501:PHE:HB2	2:A:870:MTL:H61	2.01	0.41
1:B:451:ASN:HB3	1:B:454:ASN:O	2.20	0.41
1:B:499:VAL:O	1:B:503:GLU:HG3	2.19	0.41
1:A:378:MET:HE2	1:A:378:MET:HA	2.02	0.41
1:A:303:VAL:HG11	1:A:694:GLU:O	2.19	0.41
1:B:678:TRP:HA	6:B:761:H4B:N1	2.35	0.41
1:A:709:ASP:HB2	1:A:712:ASN:ND2	2.35	0.41
1:A:300:PHE:N	1:A:300:PHE:CD1	2.89	0.41
1:A:473:ARG:CZ	1:A:710:PRO:HG3	2.50	0.41
1:B:512:ALA:HA	1:B:513:PRO:HD3	1.92	0.41
1:A:355:PHE:CZ	1:A:385:ASN:ND2	2.89	0.41
1:A:312:LEU:HB3	1:A:666:TYR:CD2	2.56	0.41
1:B:701:THR:HA	1:B:702:PRO:C	2.41	0.41
1:B:474:VAL:HG11	1:B:568:SER:HB2	2.03	0.41
1:A:445:HIS:C	1:A:445:HIS:CD2	2.94	0.41
1:A:381:LEU:HA	1:A:381:LEU:HD12	1.95	0.41
1:A:455:LEU:HD12	1:A:587:TRP:HB3	2.02	0.40
1:A:507:GLN:HG2	1:A:507:GLN:O	2.21	0.40
1:A:506:ILE:C	1:A:508:GLN:H	2.24	0.40
1:A:589:MET:HA	1:A:649:VAL:O	2.20	0.40
1:A:386:LYS:HA	1:A:386:LYS:HD3	1.92	0.40

There are no symmetry-related clashes.

5.3 Torsion angles ⓘ

5.3.1 Protein backbone ⓘ

In the following table, the Percentiles column shows the percent Ramachandran outliers of the chain as a percentile score with respect to all X-ray entries followed by that with respect to entries of similar resolution.

The Analysed column shows the number of residues for which the backbone conformation was analysed, and the total number of residues.

Mol	Chain	Analysed	Favoured	Allowed	Outliers	Percentiles	
1	A	405/421 (96%)	384 (95%)	20 (5%)	1 (0%)	52	43
1	B	408/421 (97%)	394 (97%)	14 (3%)	0	100	100
All	All	813/842 (97%)	778 (96%)	34 (4%)	1 (0%)	56	48

All (1) Ramachandran outliers are listed below:

Mol	Chain	Res	Type
1	A	489	ASP

5.3.2 Protein sidechains ⓘ

In the following table, the Percentiles column shows the percent sidechain outliers of the chain as a percentile score with respect to all X-ray entries followed by that with respect to entries of similar resolution.

The Analysed column shows the number of residues for which the sidechain conformation was analysed, and the total number of residues.

Mol	Chain	Analysed	Rotameric	Outliers	Percentiles	
1	A	365/377 (97%)	354 (97%)	11 (3%)	48	36
1	B	368/377 (98%)	360 (98%)	8 (2%)	60	51
All	All	733/754 (97%)	714 (97%)	19 (3%)	54	43

All (19) residues with a non-rotameric sidechain are listed below:

Mol	Chain	Res	Type
1	A	316	LEU
1	A	336	MET
1	A	337	LEU
1	A	454	ASN
1	A	485	TYR
1	A	523	LEU
1	A	547	ARG
1	A	555	LYS
1	A	616	LEU
1	A	620	LYS
1	A	635	ILE
1	B	316	LEU
1	B	321	THR
1	B	337	LEU
1	B	423	LYS

Continued on next page...

Continued from previous page...

Mol	Chain	Res	Type
1	B	454	ASN
1	B	523	LEU
1	B	527	ASN
1	B	547	ARG

Some sidechains can be flipped to improve hydrogen bonding and reduce clashes. All (14) such sidechains are listed below:

Mol	Chain	Res	Type
1	A	440	ASN
1	A	454	ASN
1	A	487	GLN
1	A	697	ASN
1	A	712	ASN
1	B	364	GLN
1	B	425	GLN
1	B	440	ASN
1	B	454	ASN
1	B	507	GLN
1	B	527	ASN
1	B	535	GLN
1	B	664	ASN
1	B	697	ASN

5.3.3 RNA [i](#)

There are no RNA molecules in this entry.

5.4 Non-standard residues in protein, DNA, RNA chains [i](#)

There are no non-standard protein/DNA/RNA residues in this entry.

5.5 Carbohydrates [i](#)

There are no carbohydrates in this entry.

5.6 Ligand geometry [i](#)

Of 11 ligands modelled in this entry, 1 is monoatomic - leaving 10 for Mogul analysis.

In the following table, the Counts columns list the number of bonds (or angles) for which Mogul statistics could be retrieved, the number of bonds (or angles) that are observed in the model and the number of bonds (or angles) that are defined in the chemical component dictionary. The Link column lists molecule types, if any, to which the group is linked. The Z score for a bond length (or angle) is the number of standard deviations the observed value is removed from the expected value. A bond length (or angle) with $|Z| > 2$ is considered an outlier worth inspection. RMSZ is the root-mean-square of all Z scores of the bond lengths (or angles).

Mol	Type	Chain	Res	Link	Bond lengths			Bond angles		
					Counts	RMSZ	# Z > 2	Counts	RMSZ	# Z > 2
5	HEM	A	750	1	30,50,50	2.78	10 (33%)	24,82,82	2.44	10 (41%)
6	H4B	A	760	-	13,18,18	2.70	4 (30%)	11,26,26	4.05	6 (54%)
7	DP2	A	792	-	17,23,23	0.86	0	19,28,28	1.32	2 (10%)
3	ACT	A	860	-	1,3,3	3.01	1 (100%)	0,3,3	0.00	-
2	MTL	A	870	-	11,11,11	1.05	0	14,14,14	0.63	0
5	HEM	B	750	1	30,50,50	2.77	10 (33%)	24,82,82	2.18	7 (29%)
6	H4B	B	761	-	13,18,18	2.43	4 (30%)	11,26,26	4.00	6 (54%)
7	DP2	B	793	-	17,23,23	1.13	3 (17%)	19,28,28	1.62	2 (10%)
3	ACT	B	861	-	1,3,3	2.60	1 (100%)	0,3,3	0.00	-
2	MTL	B	871	-	11,11,11	1.04	0	14,14,14	0.59	0

In the following table, the Chirals column lists the number of chiral outliers, the number of chiral centers analysed, the number of these observed in the model and the number defined in the chemical component dictionary. Similar counts are reported in the Torsion and Rings columns. '-' means no outliers of that kind were identified.

Mol	Type	Chain	Res	Link	Chirals	Torsions	Rings
5	HEM	A	750	1	-	0/10/54/54	0/0/8/8
6	H4B	A	760	-	-	0/8/17/17	0/2/2/2
7	DP2	A	792	-	-	0/22/28/28	0/0/0/0
3	ACT	A	860	-	-	0/0/0/0	0/0/0/0
2	MTL	A	870	-	-	0/16/16/16	0/0/0/0
5	HEM	B	750	1	-	0/10/54/54	0/0/8/8
6	H4B	B	761	-	-	0/8/17/17	0/2/2/2
7	DP2	B	793	-	-	0/22/28/28	0/0/0/0
3	ACT	B	861	-	-	0/0/0/0	0/0/0/0
2	MTL	B	871	-	-	0/16/16/16	0/0/0/0

All (33) bond length outliers are listed below:

Mol	Chain	Res	Type	Atoms	Z	Observed(Å)	Ideal(Å)
5	A	750	HEM	C3B-CAB	-6.32	1.39	1.51
5	B	750	HEM	C3B-CAB	-6.25	1.39	1.51

Continued on next page...

Continued from previous page...

Mol	Chain	Res	Type	Atoms	Z	Observed(Å)	Ideal(Å)
5	B	750	HEM	C2D-C3D	-5.90	1.36	1.54
5	A	750	HEM	C2D-C3D	-5.81	1.37	1.54
5	A	750	HEM	C3B-C4B	-5.80	1.46	1.51
5	B	750	HEM	C3B-C4B	-5.61	1.46	1.51
5	B	750	HEM	C2C-C1C	-5.50	1.42	1.52
5	A	750	HEM	C3D-C4D	-5.00	1.45	1.51
5	B	750	HEM	C3C-CAC	-4.90	1.42	1.51
5	B	750	HEM	C3D-C4D	-4.70	1.45	1.51
5	A	750	HEM	C3C-CAC	-4.26	1.43	1.51
5	A	750	HEM	C2C-C1C	-4.19	1.44	1.52
5	B	750	HEM	C2B-C1B	-2.57	1.43	1.51
5	B	750	HEM	C2D-C1D	-2.54	1.43	1.51
7	B	793	DP2	O-C	-2.21	1.19	1.23
6	B	761	H4B	C2-N2	-2.17	1.29	1.34
5	A	750	HEM	C2B-C1B	-2.14	1.44	1.51
7	B	793	DP2	C'-N	2.07	1.38	1.34
5	A	750	HEM	CHC-C1C	2.08	1.41	1.36
7	B	793	DP2	CA-C	2.29	1.56	1.52
3	B	861	ACT	CH3-C	2.60	1.52	1.48
5	B	750	HEM	CHD-C4C	2.81	1.43	1.36
6	A	760	H4B	C8A-N1	2.94	1.39	1.34
3	A	860	ACT	CH3-C	3.01	1.53	1.48
5	B	750	HEM	C4C-NC	3.37	1.40	1.36
6	B	761	H4B	C4A-N5	3.99	1.47	1.38
5	A	750	HEM	C1C-NC	4.00	1.41	1.36
5	A	750	HEM	C4C-NC	4.13	1.41	1.36
6	B	761	H4B	C6-N5	4.53	1.54	1.45
6	A	760	H4B	C6-N5	4.55	1.54	1.45
6	A	760	H4B	C4A-N5	4.79	1.49	1.38
6	B	761	H4B	C4-N3	5.22	1.42	1.33
6	A	760	H4B	C4-N3	6.17	1.44	1.33

All (33) bond angle outliers are listed below:

Mol	Chain	Res	Type	Atoms	Z	Observed(°)	Ideal(°)
6	A	760	H4B	N3-C2-N1	-5.02	117.30	125.53
7	B	793	DP2	O-C-N2	-4.81	115.94	123.08
6	B	761	H4B	N3-C2-N1	-4.31	118.47	125.53
5	A	750	HEM	CBA-CAA-C2A	-3.97	105.41	112.53
7	A	792	DP2	O-C-N2	-3.89	117.31	123.08
5	B	750	HEM	CBA-CAA-C2A	-3.10	106.97	112.53
5	A	750	HEM	CBD-CAD-C3D	-2.81	105.39	113.55

Continued on next page...

Continued from previous page...

Mol	Chain	Res	Type	Atoms	Z	Observed(°)	Ideal(°)
5	A	750	HEM	C3B-C4B-CHC	2.01	125.99	123.16
7	A	792	DP2	CA-C-N2	2.54	120.70	116.60
5	A	750	HEM	CAA-C2A-C1A	2.70	129.94	127.01
5	B	750	HEM	C2D-C3D-C4D	2.72	106.11	101.50
5	A	750	HEM	CMD-C2D-C3D	2.76	126.56	114.35
6	B	761	H4B	N2-C2-N1	3.13	122.39	117.20
6	A	760	H4B	N2-C2-N1	3.17	122.44	117.20
5	B	750	HEM	CMD-C2D-C3D	3.27	128.82	114.35
6	B	761	H4B	C2-N1-C8A	3.36	122.09	114.54
6	A	760	H4B	C4A-C8A-N8	3.46	122.51	118.43
7	B	793	DP2	CA-C-N2	3.52	122.28	116.60
5	A	750	HEM	CAD-C3D-C4D	3.55	124.99	112.47
5	B	750	HEM	CMC-C2C-C3C	3.57	125.44	116.53
6	A	760	H4B	C2-N1-C8A	3.78	123.05	114.54
6	B	761	H4B	C4A-C8A-N8	3.80	122.91	118.43
5	B	750	HEM	CAD-C3D-C4D	3.81	125.90	112.47
5	A	750	HEM	C2D-C3D-C4D	4.00	108.29	101.50
5	B	750	HEM	CMB-C2B-C3B	4.24	127.11	116.53
5	A	750	HEM	CMB-C2B-C3B	4.40	127.51	116.53
5	A	750	HEM	CMC-C2C-C3C	4.56	127.92	116.53
5	A	750	HEM	CAD-C3D-C2D	4.69	126.71	113.22
5	B	750	HEM	CAD-C3D-C2D	4.95	127.45	113.22
6	B	761	H4B	C4-N3-C2	6.23	124.58	115.94
6	A	760	H4B	C4-N3-C2	6.49	124.95	115.94
6	A	760	H4B	C4-C4A-C8A	8.41	122.18	114.56
6	B	761	H4B	C4-C4A-C8A	8.97	122.68	114.56

There are no chirality outliers.

There are no torsion outliers.

There are no ring outliers.

5 monomers are involved in 8 short contacts:

Mol	Chain	Res	Type	Clashes	Symm-Clashes
5	A	750	HEM	2	0
7	A	792	DP2	1	0
2	A	870	MTL	1	0
5	B	750	HEM	3	0
6	B	761	H4B	1	0

5.7 Other polymers

There are no such residues in this entry.

5.8 Polymer linkage issues

There are no chain breaks in this entry.

6 Fit of model and data ⓘ

6.1 Protein, DNA and RNA chains ⓘ

In the following table, the column labelled ‘#RSRZ> 2’ contains the number (and percentage) of RSRZ outliers, followed by percent RSRZ outliers for the chain as percentile scores relative to all X-ray entries and entries of similar resolution. The OWAB column contains the minimum, median, 95th percentile and maximum values of the occupancy-weighted average B-factor per residue. The column labelled ‘Q< 0.9’ lists the number of (and percentage) of residues with an average occupancy less than 0.9.

Mol	Chain	Analysed	<RSRZ>	#RSRZ>2	OWAB(Å ²)	Q<0.9
1	A	407/421 (96%)	0.81	57 (14%) 4 6	23, 38, 62, 77	0
1	B	410/421 (97%)	0.40	29 (7%) 19 29	22, 33, 54, 70	0
All	All	817/842 (97%)	0.61	86 (10%) 8 13	22, 36, 59, 77	0

All (86) RSRZ outliers are listed below:

Mol	Chain	Res	Type	RSRZ
1	B	348	VAL	6.4
1	A	299	ARG	6.0
1	A	300	PHE	5.8
1	B	619	ARG	5.3
1	A	715	VAL	5.1
1	B	300	PHE	5.1
1	A	488	PRO	5.0
1	A	486	LYS	4.7
1	A	355	PHE	4.5
1	B	351	LYS	4.5
1	A	489	ASP	4.5
1	B	350	THR	4.4
1	A	552	ASP	4.2
1	A	619	ARG	3.9
1	A	667	ARG	3.9
1	B	352	ASP	3.9
1	A	713	THR	3.6
1	A	511	LYS	3.6
1	B	615	ASP	3.4
1	A	633	ILE	3.3
1	A	712	ASN	3.2
1	A	479	LEU	3.2
1	B	337	LEU	3.2
1	A	328	GLU	3.1

Continued on next page...

Continued from previous page...

Mol	Chain	Res	Type	RSRZ
1	A	369	ILE	3.1
1	B	572	LEU	3.1
1	A	490	GLY	3.1
1	A	487	GLN	3.0
1	A	716	TRP	3.0
1	A	386	LYS	3.0
1	B	392	SER	3.0
1	A	370	LYS	3.0
1	A	491	SER	2.9
1	A	470	HIS	2.9
1	B	338	PRO	2.9
1	A	318	LEU	2.9
1	A	390	SER	2.8
1	A	351	LYS	2.8
1	A	371	ARG	2.8
1	A	469	LYS	2.8
1	A	630	LEU	2.8
1	A	321	THR	2.8
1	B	620	LYS	2.7
1	A	391	THR	2.7
1	A	617	ASP	2.7
1	B	479	LEU	2.7
1	B	389	GLU	2.7
1	A	551	PHE	2.7
1	A	352	ASP	2.6
1	A	507	GLN	2.6
1	A	474	VAL	2.6
1	A	373	GLY	2.5
1	A	480	ILE	2.5
1	A	618	MET	2.5
1	A	582	CYS	2.5
1	B	583	PRO	2.5
1	B	321	THR	2.5
1	B	611	ALA	2.4
1	A	524	LEU	2.4
1	A	572	LEU	2.4
1	A	574	ILE	2.3
1	B	566	ALA	2.3
1	A	584	PHE	2.3
1	B	309	ASP	2.3
1	A	581	ALA	2.3
1	A	385	ASN	2.3

Continued on next page...

Continued from previous page...

Mol	Chain	Res	Type	RSRZ
1	B	474	VAL	2.2
1	A	302	LYS	2.2
1	A	660	LYS	2.2
1	A	309	ASP	2.1
1	B	511	LYS	2.1
1	A	639	TYR	2.1
1	B	299	ARG	2.1
1	A	442	ILE	2.1
1	B	616	LEU	2.1
1	A	392	SER	2.1
1	B	617	ASP	2.1
1	A	350	THR	2.1
1	B	608	GLU	2.1
1	A	459	ILE	2.1
1	B	493	LEU	2.1
1	B	667	ARG	2.0
1	B	567	VAL	2.0
1	A	505	CYS	2.0
1	B	631	VAL	2.0
1	A	503	GLU	2.0

6.2 Non-standard residues in protein, DNA, RNA chains [i](#)

There are no non-standard protein/DNA/RNA residues in this entry.

6.3 Carbohydrates [i](#)

There are no carbohydrates in this entry.

6.4 Ligands [i](#)

In the following table, the Atoms column lists the number of modelled atoms in the group and the number defined in the chemical component dictionary. LLDF column lists the quality of electron density of the group with respect to its neighbouring residues in protein, DNA or RNA chains. The B-factors column lists the minimum, median, 95th percentile and maximum values of B factors of atoms in the group. The column labelled 'Q< 0.9' lists the number of atoms with occupancy less than 0.9.

Mol	Type	Chain	Res	Atoms	RSCC	RSR	LLDF	B-factors(Å ²)	Q<0.9
2	MTL	A	870	12/12	0.85	0.25	5.08	46,50,52,52	0

Continued on next page...

Continued from previous page...

Mol	Type	Chain	Res	Atoms	RSCC	RSR	LLDF	B-factors(\AA^2)	Q<0.9
2	MTL	B	871	12/12	0.84	0.20	4.18	45,49,50,50	0
7	DP2	A	792	24/24	0.86	0.17	1.18	33,39,42,43	0
3	ACT	B	861	4/4	0.96	0.09	0.62	38,38,39,39	0
7	DP2	B	793	24/24	0.89	0.15	0.22	29,39,42,43	0
5	HEM	B	750	43/43	0.98	0.11	-0.04	22,23,26,28	0
3	ACT	A	860	4/4	0.95	0.10	-0.79	57,58,58,58	0
5	HEM	A	750	43/43	0.97	0.10	-0.81	23,26,27,28	0
6	H4B	B	761	17/17	0.96	0.10	-0.89	24,25,27,28	0
6	H4B	A	760	17/17	0.97	0.10	-1.30	23,25,27,28	0
4	ZN	A	900	1/1	0.99	0.06	-2.19	33,33,33,33	0

6.5 Other polymers [i](#)

There are no such residues in this entry.