



Full wwPDB X-ray Structure Validation Report ⓘ

Feb 19, 2016 – 07:17 PM GMT

PDB ID : 4RU9
Title : Crystal structure of human DNA polymerase eta inserting dCMPNPP opposite a MeFapy-dG adducted DNA template
Authors : Patra, A.; Egli, M.
Deposited on : 2014-11-18
Resolution : 2.65 Å(reported)

This is a Full wwPDB X-ray Structure Validation Report for a publicly released PDB entry.
We welcome your comments at validation@mail.wwpdb.org
A user guide is available at
<http://wwpdb.org/validation/2016/XrayValidationReportHelp>
with specific help available everywhere you see the ⓘ symbol.

The following versions of software and data (see [references ⓘ](#)) were used in the production of this report:

MolProbity : 4.02b-467
Mogul : 1.7.1 (RC1), CSD as537be (2016)
Xtriage (Phenix) : 1.9-1692
EDS : rb-20026982
Percentile statistics : 20151230.v01 (using entries in the PDB archive December 30th 2015)
Refmac : 5.8.0135
CCP4 : 6.5.0
Ideal geometry (proteins) : Engh & Huber (2001)
Ideal geometry (DNA, RNA) : Parkinson et al. (1996)
Validation Pipeline (wwPDB-VP) : rb-20026982

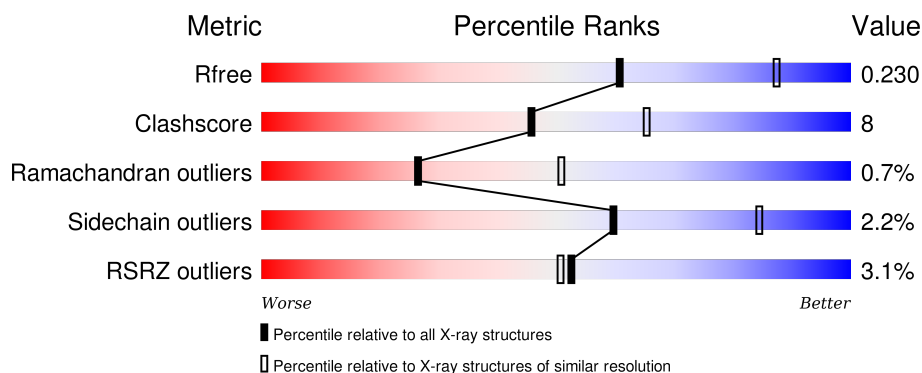
1 Overall quality at a glance

The following experimental techniques were used to determine the structure:

X-RAY DIFFRACTION

The reported resolution of this entry is 2.65 Å.

Percentile scores (ranging between 0-100) for global validation metrics of the entry are shown in the following graphic. The table shows the number of entries on which the scores are based.



Metric	Whole archive (#Entries)	Similar resolution (#Entries, resolution range(Å))
R_{free}	91344	3152 (2.70-2.62)
Clashscore	102246	3524 (2.70-2.62)
Ramachandran outliers	100387	3469 (2.70-2.62)
Sidechain outliers	100360	3469 (2.70-2.62)
RSRZ outliers	91569	3161 (2.70-2.62)

The table below summarises the geometric issues observed across the polymeric chains and their fit to the electron density. The red, orange, yellow and green segments on the lower bar indicate the fraction of residues that contain outliers for ≥ 3 , 2, 1 and 0 types of geometric quality criteria. A grey segment represents the fraction of residues that are not modelled. The numeric value for each fraction is indicated below the corresponding segment, with a dot representing fractions $\leq 5\%$. The upper red bar (where present) indicates the fraction of residues that have poor fit to the electron density. The numeric value is given above the bar.

Mol	Chain	Length	Quality of chain
1	A	432	<div> <div>3%</div> <div>84%</div> <div>14%</div> <div>..</div> </div>
2	T	12	<div> <div>25%</div> <div>67%</div> <div>25%</div> <div>8%</div> </div>
3	P	8	<div> <div>100%</div> </div>

2 Entry composition

There are 6 unique types of molecules in this entry. The entry contains 3917 atoms, of which 0 are hydrogens and 0 are deuteriums.

In the tables below, the ZeroOcc column contains the number of atoms modelled with zero occupancy, the AltConf column contains the number of residues with at least one atom in alternate conformation and the Trace column contains the number of residues modelled with at most 2 atoms.

- Molecule 1 is a protein called DNA polymerase eta.

Mol	Chain	Residues	Atoms					ZeroOcc	AltConf	Trace
1	A	427	Total	C	N	O	S	0	4	0
			3358	2104	602	626	26			

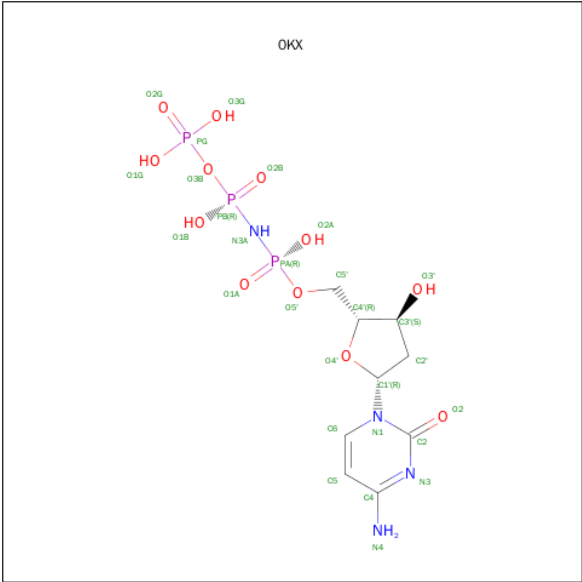
- Molecule 2 is a DNA chain called Nucleic acids Template: CAT(MF7)ATGACGCT.

Mol	Chain	Residues	Atoms					ZeroOcc	AltConf	Trace
2	T	12	Total	C	N	O	P	0	0	1
			230	109	42	68	11			

- Molecule 3 is a DNA chain called Nucleic acids Primar: AGCGTCAT.

Mol	Chain	Residues	Atoms					ZeroOcc	AltConf	Trace
3	P	8	Total	C	N	O	P	0	0	0
			161	78	30	46	7			

- Molecule 4 is 2'-DEOXY-5'-O-[(R)-HYDROXY{[(R)-HYDROXY(PHOSPHONOOXY) PHOSPHORYL]AMINO}PHOSPHORYL]CYTIDINE (three-letter code: 0KX) (formula: C₉H₁₇N₄O₁₂P₃).



Mol	Chain	Residues	Atoms					ZeroOcc	AltConf
4	A	1	Total	C	N	O	P	0	0
			28	9	4	12	3		

- Molecule 5 is MAGNESIUM ION (three-letter code: MG) (formula: Mg).

Mol	Chain	Residues	Atoms		ZeroOcc	AltConf
5	A	2	Total	Mg	0	0
			2	2		

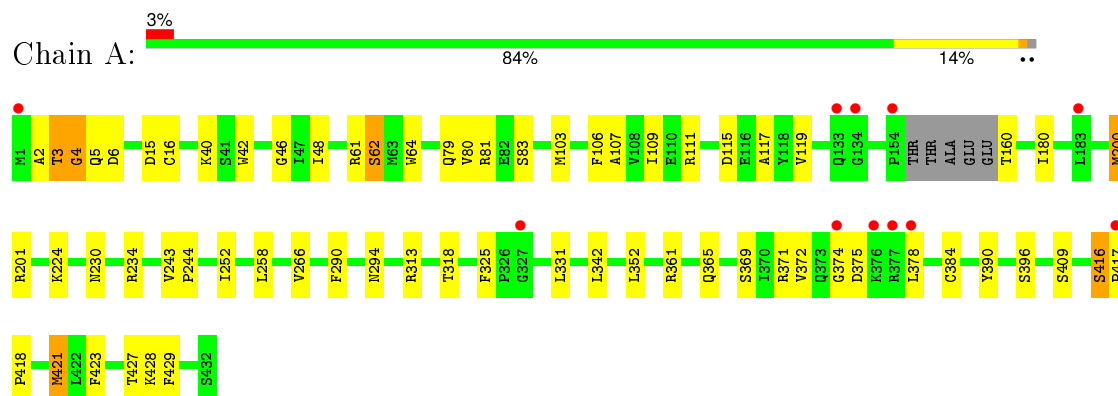
- Molecule 6 is water.

Mol	Chain	Residues	Atoms		ZeroOcc	AltConf
6	A	119	Total	O	0	0
			119	119		
6	T	10	Total	O	0	0
			10	10		
6	P	9	Total	O	0	0
			9	9		

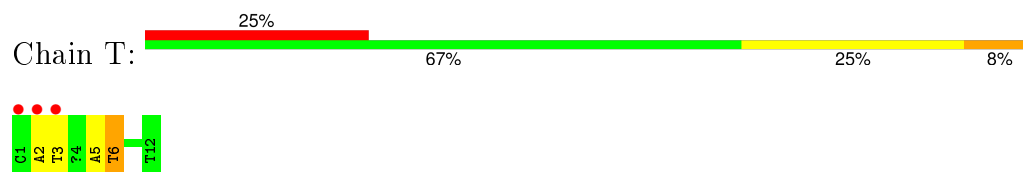
3 Residue-property plots

These plots are drawn for all protein, RNA and DNA chains in the entry. The first graphic for a chain summarises the proportions of errors displayed in the second graphic. The second graphic shows the sequence view annotated by issues in geometry and electron density. Residues are color-coded according to the number of geometric quality criteria for which they contain at least one outlier: green = 0, yellow = 1, orange = 2 and red = 3 or more. A red dot above a residue indicates a poor fit to the electron density ($RSRZ > 2$). Stretches of 2 or more consecutive residues without any outlier are shown as a green connector. Residues present in the sample, but not in the model, are shown in grey.

- Molecule 1: DNA polymerase eta



- Molecule 2: Nucleic acids Template: CAT(MF7)ATGACGCT



- Molecule 3: Nucleic acids Primar: AGCGTCAT



There are no outlier residues recorded for this chain.

4 Data and refinement statistics

Property	Value	Source
Space group	P 61	Depositor
Cell constants a, b, c, α , β , γ	98.97Å 98.97Å 81.62Å 90.00° 90.00° 120.00°	Depositor
Resolution (Å)	50.00 – 2.65 49.49 – 2.48	Depositor EDS
% Data completeness (in resolution range)	99.1 (50.00-2.65) 99.2 (49.49-2.48)	Depositor EDS
R_{merge}	0.14	Depositor
R_{sym}	0.14	Depositor
$\langle I/\sigma(I) \rangle$ ¹	1.69 (at 2.48Å)	Xtriage
Refinement program	REFMAC 5.8.0107	Depositor
R, R_{free}	0.159 , 0.229 0.163 , 0.230	Depositor DCC
R_{free} test set	688 reflections (5.50%)	DCC
Wilson B-factor (Å ²)	42.7	Xtriage
Anisotropy	0.048	Xtriage
Bulk solvent k_{sol} (e/Å ³), B_{sol} (Å ²)	0.38 , 42.4	EDS
Estimated twinning fraction	0.055 for h,-h-k,-l	Xtriage
L-test for twinning ²	$\langle L \rangle = 0.49$, $\langle L^2 \rangle = 0.33$	Xtriage
Outliers	0 of 16057 reflections	Xtriage
F_o, F_c correlation	0.96	EDS
Total number of atoms	3917	wwPDB-VP
Average B, all atoms (Å ²)	48.0	wwPDB-VP

Xtriage's analysis on translational NCS is as follows: *The largest off-origin peak in the Patterson function is 4.38% of the height of the origin peak. No significant pseudotranslation is detected.*

¹Intensities estimated from amplitudes.

²Theoretical values of $\langle |L| \rangle$, $\langle L^2 \rangle$ for acentric reflections are 0.5, 0.375 respectively for untwinned datasets, and 0.333, 0.2 for perfectly twinned datasets.

5 Model quality [i](#)

5.1 Standard geometry [i](#)

Bond lengths and bond angles in the following residue types are not validated in this section: 0KX, MG, MF7

The Z score for a bond length (or angle) is the number of standard deviations the observed value is removed from the expected value. A bond length (or angle) with $|Z| > 5$ is considered an outlier worth inspection. RMSZ is the root-mean-square of all Z scores of the bond lengths (or angles).

Mol	Chain	Bond lengths		Bond angles	
		RMSZ	$\# Z > 5$	RMSZ	$\# Z > 5$
1	A	0.62	0/3428	0.81	2/4625 (0.0%)
2	T	0.62	1/229 (0.4%)	0.90	0/350
3	P	0.38	0/180	0.84	0/276
All	All	0.61	1/3837 (0.0%)	0.82	2/5251 (0.0%)

All (1) bond length outliers are listed below:

Mol	Chain	Res	Type	Atoms	Z	Observed(Å)	Ideal(Å)
2	T	6	DT	O3'-P	-5.83	1.54	1.61

All (2) bond angle outliers are listed below:

Mol	Chain	Res	Type	Atoms	Z	Observed(°)	Ideal(°)
1	A	61	ARG	NE-CZ-NH1	5.80	123.20	120.30
1	A	201	ARG	NE-CZ-NH2	5.26	122.93	120.30

There are no chirality outliers.

There are no planarity outliers.

5.2 Too-close contacts [i](#)

In the following table, the Non-H and H(model) columns list the number of non-hydrogen atoms and hydrogen atoms in the chain respectively. The H(added) column lists the number of hydrogen atoms added and optimized by MolProbity. The Clashes column lists the number of clashes within the asymmetric unit, whereas Symm-Clashes lists symmetry related clashes.

Mol	Chain	Non-H	H(model)	H(added)	Clashes	Symm-Clashes
1	A	3358	0	3403	50	0
2	T	230	0	128	12	0

Continued on next page...

Continued from previous page...

Mol	Chain	Non-H	H(model)	H(added)	Clashes	Symm-Clashes
3	P	161	0	92	0	0
4	A	28	0	15	4	0
5	A	2	0	0	0	0
6	A	119	0	0	1	0
6	P	9	0	0	0	0
6	T	10	0	0	0	0
All	All	3917	0	3638	57	0

The all-atom clashscore is defined as the number of clashes found per 1000 atoms (including hydrogen atoms). The all-atom clashscore for this structure is 8.

All (57) close contacts within the same asymmetric unit are listed below, sorted by their clash magnitude.

Atom-1	Atom-2	Interatomic distance (Å)	Clash overlap (Å)
4:A:501:0KX:O4'	4:A:501:0KX:C4'	1.64	1.23
1:A:3:THR:OG1	1:A:5:GLN:OE1	1.95	0.85
1:A:409:SER:HB2	1:A:416:SER:OG	1.84	0.76
1:A:64:TRP:CH2	2:T:3:DT:H2''	2.22	0.75
2:T:2:DA:H4'	2:T:3:DT:O5'	1.91	0.70
1:A:318:THR:HG22	1:A:427:THR:HG22	1.76	0.68
1:A:62:SER:OG	1:A:62:SER:O	2.13	0.65
2:T:3:DT:H2'	2:T:3:DT:O2	1.96	0.64
1:A:64:TRP:HH2	2:T:3:DT:H2''	1.62	0.64
1:A:371:ARG:NH2	1:A:375:ASP:O	2.32	0.63
1:A:3:THR:O	1:A:5:GLN:HG3	1.99	0.63
2:T:5:DA:H2''	2:T:6:DT:O5'	1.97	0.63
1:A:2:ALA:O	1:A:4:GLY:N	2.33	0.62
1:A:62:SER:CA	2:T:3:DT:H72	2.31	0.61
1:A:224:LYS:HE3	6:A:618:HOH:O	2.01	0.60
1:A:3:THR:O	1:A:5:GLN:N	2.37	0.58
4:A:501:0KX:C5'	4:A:501:0KX:O4'	2.49	0.55
1:A:352:LEU:HB3	1:A:390:TYR:CE1	2.42	0.55
1:A:243:VAL:HB	1:A:244:PRO:HD3	1.89	0.54
1:A:3:THR:CB	1:A:5:GLN:OE1	2.56	0.53
1:A:365:GLN:HE21	1:A:384[B]:CYS:HB3	1.74	0.53
1:A:3:THR:O	1:A:4:GLY:C	2.47	0.53
1:A:372:VAL:HG22	1:A:417:PRO:HG2	1.91	0.53
1:A:369:SER:HB3	1:A:423:PHE:HB3	1.90	0.52
1:A:62:SER:HA	2:T:3:DT:H72	1.92	0.51
1:A:48:ILE:HG22	2:T:3:DT:O4	2.12	0.50
1:A:331:LEU:O	1:A:418:PRO:HA	2.10	0.50

Continued on next page...

Continued from previous page...

Atom-1	Atom-2	Interatomic distance (Å)	Clash overlap (Å)
1:A:342:LEU:HA	1:A:396:SER:OG	2.12	0.49
1:A:160:THR:HG23	1:A:160:THR:O	2.13	0.49
1:A:365:GLN:OE1	1:A:428:LYS:HE2	2.12	0.49
1:A:6:ASP:N	1:A:6:ASP:OD1	2.39	0.49
1:A:109:ILE:C	1:A:109:ILE:HD12	2.34	0.48
4:A:501:0KX:H15	4:A:501:0KX:O5'	2.15	0.47
1:A:111:ARG:O	1:A:313:ARG:NH1	2.48	0.47
1:A:318:THR:CG2	1:A:427:THR:HG22	2.45	0.46
1:A:365:GLN:HE21	1:A:384[A]:CYS:HB2	1.80	0.46
1:A:103:MET:HE3	1:A:117:ALA:HB3	1.97	0.46
1:A:80:VAL:HG12	1:A:81:ARG:O	2.16	0.46
1:A:416:SER:HA	1:A:417:PRO:C	2.35	0.45
1:A:372:VAL:CG2	1:A:417:PRO:HG2	2.47	0.45
1:A:252:ILE:HG23	1:A:258:LEU:HD13	1.98	0.45
1:A:266:VAL:HG22	1:A:290:PHE:CZ	2.52	0.45
1:A:230:ASN:O	1:A:234:ARG:HB2	2.17	0.45
1:A:62:SER:HA	2:T:3:DT:C5	2.53	0.44
1:A:15:ASP:O	1:A:16:CYS:C	2.57	0.43
2:T:2:DA:O3'	2:T:3:DT:H4'	2.17	0.43
1:A:40:LYS:HD3	1:A:79:GLN:HG2	2.01	0.43
1:A:46:GLY:HA3	2:T:3:DT:O2	2.19	0.43
1:A:107:ALA:HB3	1:A:119:VAL:CG1	2.49	0.42
1:A:371:ARG:HB3	1:A:421:MET:HB3	2.03	0.41
1:A:325:PHE:CD2	1:A:331:LEU:HD21	2.55	0.41
1:A:62:SER:HA	2:T:3:DT:C7	2.50	0.41
1:A:361:ARG:HG3	1:A:429:PHE:HD1	1.85	0.41
1:A:16:CYS:HA	4:A:501:0KX:O2B	2.21	0.41
1:A:374:GLY:O	1:A:375:ASP:C	2.59	0.40
1:A:290:PHE:O	1:A:294:ASN:HB2	2.21	0.40
1:A:106:PHE:HB2	1:A:200[A]:MET:HE2	2.03	0.40

There are no symmetry-related clashes.

5.3 Torsion angles ⓘ

5.3.1 Protein backbone ⓘ

In the following table, the Percentiles column shows the percent Ramachandran outliers of the chain as a percentile score with respect to all X-ray entries followed by that with respect to entries of similar resolution.

The Analysed column shows the number of residues for which the backbone conformation was analysed, and the total number of residues.

Mol	Chain	Analysed	Favoured	Allowed	Outliers	Percentiles	
1	A	427/432 (99%)	412 (96%)	12 (3%)	3 (1%)	26	51

All (3) Ramachandran outliers are listed below:

Mol	Chain	Res	Type
1	A	3	THR
1	A	4	GLY
1	A	378	LEU

5.3.2 Protein sidechains ⓘ

In the following table, the Percentiles column shows the percent sidechain outliers of the chain as a percentile score with respect to all X-ray entries followed by that with respect to entries of similar resolution.

The Analysed column shows the number of residues for which the sidechain conformation was analysed, and the total number of residues.

Mol	Chain	Analysed	Rotameric	Outliers	Percentiles	
1	A	370/370 (100%)	361 (98%)	9 (2%)	57	82

All (9) residues with a non-rotameric sidechain are listed below:

Mol	Chain	Res	Type
1	A	42	TRP
1	A	62	SER
1	A	83	SER
1	A	115	ASP
1	A	180	ILE
1	A	200[A]	MET
1	A	200[B]	MET
1	A	416	SER
1	A	421	MET

Some sidechains can be flipped to improve hydrogen bonding and reduce clashes. All (1) such sidechains are listed below:

Mol	Chain	Res	Type
1	A	38	GLN

5.3.3 RNA ⓘ

There are no RNA molecules in this entry.

5.4 Non-standard residues in protein, DNA, RNA chains ⓘ

1 non-standard protein/DNA/RNA residue is modelled in this entry.

In the following table, the Counts columns list the number of bonds (or angles) for which Mogul statistics could be retrieved, the number of bonds (or angles) that are observed in the model and the number of bonds (or angles) that are defined in the chemical component dictionary. The Link column lists molecule types, if any, to which the group is linked. The Z score for a bond length (or angle) is the number of standard deviations the observed value is removed from the expected value. A bond length (or angle) with $|Z| > 2$ is considered an outlier worth inspection. RMSZ is the root-mean-square of all Z scores of the bond lengths (or angles).

Mol	Type	Chain	Res	Link	Bond lengths			Bond angles		
					Counts	RMSZ	# $ Z > 2$	Counts	RMSZ	# $ Z > 2$
2	MF7	T	4	2	20,25,26	1.78	4 (20%)	21,35,38	1.37	3 (14%)

In the following table, the Chirals column lists the number of chiral outliers, the number of chiral centers analysed, the number of these observed in the model and the number defined in the chemical component dictionary. Similar counts are reported in the Torsion and Rings columns. '-' means no outliers of that kind were identified.

Mol	Type	Chain	Res	Link	Chirals	Torsions	Rings
2	MF7	T	4	2	-	0/13/27/28	0/2/2/2

All (4) bond length outliers are listed below:

Mol	Chain	Res	Type	Atoms	Z	Observed(Å)	Ideal(Å)
2	T	4	MF7	C8-N7	-4.52	1.26	1.37
2	T	4	MF7	C5-N7	-3.10	1.41	1.44
2	T	4	MF7	C5-C6	3.03	1.49	1.42
2	T	4	MF7	C5-C4	3.82	1.49	1.41

All (3) bond angle outliers are listed below:

Mol	Chain	Res	Type	Atoms	Z	Observed(°)	Ideal(°)
2	T	4	MF7	N1-C2-N3	-2.34	121.69	125.51
2	T	4	MF7	C2-N1-C6	2.61	122.76	116.44
2	T	4	MF7	C2-N3-C4	3.93	123.45	114.63

There are no chirality outliers.

There are no torsion outliers.

There are no ring outliers.

No monomer is involved in short contacts.

5.5 Carbohydrates

There are no carbohydrates in this entry.

5.6 Ligand geometry

Of 3 ligands modelled in this entry, 2 are monoatomic - leaving 1 for Mogul analysis.

In the following table, the Counts columns list the number of bonds (or angles) for which Mogul statistics could be retrieved, the number of bonds (or angles) that are observed in the model and the number of bonds (or angles) that are defined in the chemical component dictionary. The Link column lists molecule types, if any, to which the group is linked. The Z score for a bond length (or angle) is the number of standard deviations the observed value is removed from the expected value. A bond length (or angle) with $|Z| > 2$ is considered an outlier worth inspection. RMSZ is the root-mean-square of all Z scores of the bond lengths (or angles).

Mol	Type	Chain	Res	Link	Bond lengths			Bond angles		
					Counts	RMSZ	$\# Z > 2$	Counts	RMSZ	$\# Z > 2$
4	0KX	A	501	5	25,29,29	3.23	12 (48%)	28,45,45	1.23	4 (14%)

In the following table, the Chirals column lists the number of chiral outliers, the number of chiral centers analysed, the number of these observed in the model and the number defined in the chemical component dictionary. Similar counts are reported in the Torsion and Rings columns. '-' means no outliers of that kind were identified.

Mol	Type	Chain	Res	Link	Chirals	Torsions	Rings
4	0KX	A	501	5	-	0/14/34/34	0/2/2/2

All (12) bond length outliers are listed below:

Mol	Chain	Res	Type	Atoms	Z	Observed(Å)	Ideal(Å)
4	A	501	0KX	C3'-C4'	-6.96	1.33	1.53
4	A	501	0KX	O4'-C1'	-5.02	1.30	1.42
4	A	501	0KX	PB-O3B	-3.48	1.54	1.59
4	A	501	0KX	PB-O1B	-2.75	1.49	1.56
4	A	501	0KX	C4-N4	2.50	1.42	1.35
4	A	501	0KX	PB-O2B	2.75	1.49	1.46
4	A	501	0KX	C2-N3	2.92	1.44	1.38

Continued on next page...

Continued from previous page...

Mol	Chain	Res	Type	Atoms	Z	Observed(Å)	Ideal(Å)
4	A	501	0KX	C4-N3	3.08	1.41	1.35
4	A	501	0KX	C6-C5	3.35	1.45	1.38
4	A	501	0KX	PA-O1A	3.39	1.49	1.46
4	A	501	0KX	C6-N1	5.17	1.42	1.35
4	A	501	0KX	O4'-C4'	8.33	1.64	1.45

All (4) bond angle outliers are listed below:

Mol	Chain	Res	Type	Atoms	Z	Observed(°)	Ideal(°)
4	A	501	0KX	PG-O3B-PB	-2.40	124.01	132.71
4	A	501	0KX	C2'-C1'-N1	-2.03	109.13	114.14
4	A	501	0KX	O2A-PA-O1A	2.37	114.69	110.02
4	A	501	0KX	C6-C5-C4	2.53	118.43	117.44

There are no chirality outliers.

There are no torsion outliers.

There are no ring outliers.

1 monomer is involved in 4 short contacts:

Mol	Chain	Res	Type	Clashes	Symm-Clashes
4	A	501	0KX	4	0

5.7 Other polymers [i](#)

There are no such residues in this entry.

5.8 Polymer linkage issues [i](#)

There are no chain breaks in this entry.

6 Fit of model and data ⓘ

6.1 Protein, DNA and RNA chains ⓘ

In the following table, the column labelled ‘#RSRZ> 2’ contains the number (and percentage) of RSRZ outliers, followed by percent RSRZ outliers for the chain as percentile scores relative to all X-ray entries and entries of similar resolution. The OWAB column contains the minimum, median, 95th percentile and maximum values of the occupancy-weighted average B-factor per residue. The column labelled ‘Q< 0.9’ lists the number of (and percentage) of residues with an average occupancy less than 0.9.

Mol	Chain	Analysed	<RSRZ>	#RSRZ>2	OWAB(Å ²)	Q<0.9
1	A	427/432 (98%)	-0.44	11 (2%) 59 58	25, 42, 84, 116	0
2	T	11/12 (91%)	0.56	3 (27%) 1 0	42, 48, 127, 159	0
3	P	8/8 (100%)	-0.84	0 100 100	40, 44, 49, 56	0
All	All	446/452 (98%)	-0.43	14 (3%) 52 51	25, 43, 86, 159	0

All (14) RSRZ outliers are listed below:

Mol	Chain	Res	Type	RSRZ
2	T	3	DT	5.2
2	T	1	DC	5.1
1	A	377	ARG	4.0
1	A	378	LEU	3.6
1	A	183	LEU	3.5
1	A	374	GLY	3.4
1	A	376	LYS	3.0
1	A	133	GLN	3.0
1	A	154	PRO	2.9
2	T	2	DA	2.6
1	A	1	MET	2.4
1	A	134	GLY	2.4
1	A	327	GLY	2.2
1	A	417	PRO	2.1

6.2 Non-standard residues in protein, DNA, RNA chains ⓘ

In the following table, the Atoms column lists the number of modelled atoms in the group and the number defined in the chemical component dictionary. LLDF column lists the quality of electron density of the group with respect to its neighbouring residues in protein, DNA or RNA chains. The B-factors column lists the minimum, median, 95th percentile and maximum values of B factors of atoms in the group. The column labelled ‘Q< 0.9’ lists the number of atoms with occupancy

less than 0.9.

Mol	Type	Chain	Res	Atoms	RSCC	RSR	LLDF	B-factors(\AA^2)	Q<0.9
2	MF7	T	4	24/25	0.94	0.15	-	46,55,90,97	0

6.3 Carbohydrates [i](#)

There are no carbohydrates in this entry.

6.4 Ligands [i](#)

In the following table, the Atoms column lists the number of modelled atoms in the group and the number defined in the chemical component dictionary. LLDF column lists the quality of electron density of the group with respect to its neighbouring residues in protein, DNA or RNA chains. The B-factors column lists the minimum, median, 95th percentile and maximum values of B factors of atoms in the group. The column labelled 'Q< 0.9' lists the number of atoms with occupancy less than 0.9.

Mol	Type	Chain	Res	Atoms	RSCC	RSR	LLDF	B-factors(\AA^2)	Q<0.9
4	0KX	A	501	28/28	0.98	0.12	0.25	27,32,40,44	0
5	MG	A	502	1/1	0.99	0.06	-5.17	24,24,24,24	0
5	MG	A	503	1/1	0.94	0.06	-	39,39,39,39	0

6.5 Other polymers [i](#)

There are no such residues in this entry.