



Full wwPDB X-ray Structure Validation Report ⓘ

Jan 31, 2016 – 10:03 PM GMT

PDB ID : 1RWN
Title : Crystal structure of human caspase-1 in complex with 3-{2-ethyl-6-[4-(quinoxalin-2-ylamino)-benzoylamino]-hexanoylamino}-4-oxo-butyric acid
Authors : Romanowski, M.J.; Fahr, B.T.; O'Brien, T.
Deposited on : 2003-12-16
Resolution : 2.00 Å(reported)

This is a Full wwPDB X-ray Structure Validation Report for a publicly released PDB entry.
We welcome your comments at validation@mail.wwpdb.org
A user guide is available at
<http://wwpdb.org/validation/2016/XrayValidationReportHelp>
with specific help available everywhere you see the ⓘ symbol.

The following versions of software and data (see [references ⓘ](#)) were used in the production of this report:

MolProbity : 4.02b-467
Mogul : 1.7 (RC4), CSD as536be (2015)
Xtriage (Phenix) : 1.9-1692
EDS : rb-20026688
Percentile statistics : 20151230.v01 (using entries in the PDB archive December 30th 2015)
Refmac : 5.8.0135
CCP4 : 6.5.0
Ideal geometry (proteins) : Engh & Huber (2001)
Ideal geometry (DNA, RNA) : Parkinson et al. (1996)
Validation Pipeline (wwPDB-VP) : trunk26865

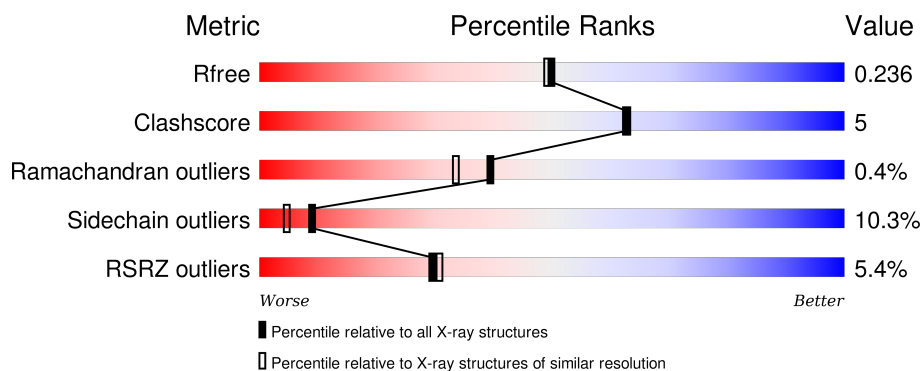
1 Overall quality at a glance

The following experimental techniques were used to determine the structure:

X-RAY DIFFRACTION



The reported resolution of this entry is 2.00 Å.

Percentile scores (ranging between 0-100) for global validation metrics of the entry are shown in the following graphic. The table shows the number of entries on which the scores are based.



Metric	Whole archive (#Entries)	Similar resolution (#Entries, resolution range(Å))
R_{free}	91344	6249 (2.00-2.00)
Clashscore	102246	7340 (2.00-2.00)
Ramachandran outliers	100387	7248 (2.00-2.00)
Sidechain outliers	100360	7247 (2.00-2.00)
RSRZ outliers	91569	6262 (2.00-2.00)

The table below summarises the geometric issues observed across the polymeric chains and their fit to the electron density. The red, orange, yellow and green segments on the lower bar indicate the fraction of residues that contain outliers for ≥ 3 , 2, 1 and 0 types of geometric quality criteria. A grey segment represents the fraction of residues that are not modelled. The numeric value for each fraction is indicated below the corresponding segment, with a dot representing fractions $\leq 5\%$. The upper red bar (where present) indicates the fraction of residues that have poor fit to the electron density. The numeric value is given above the bar.

Mol	Chain	Length	Quality of chain
1	A	178	 8% 77% 19% ...
2	B	88	 81% 16% .

2 Entry composition [i](#)

There are 4 unique types of molecules in this entry. The entry contains 2386 atoms, of which 0 are hydrogens and 0 are deuteriums.

In the tables below, the ZeroOcc column contains the number of atoms modelled with zero occupancy, the AltConf column contains the number of residues with at least one atom in alternate conformation and the Trace column contains the number of residues modelled with at most 2 atoms.

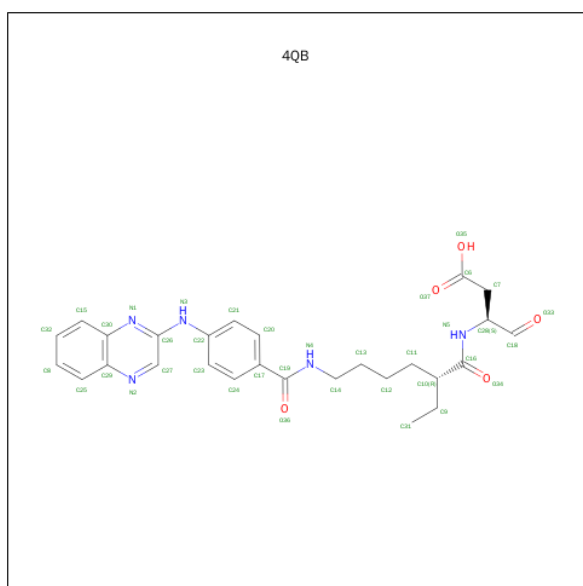
- Molecule 1 is a protein called Interleukin-1 beta convertase.

Mol	Chain	Residues	Atoms					ZeroOcc	AltConf	Trace
1	A	173	Total	C	N	O	S	0	0	0
			1351	844	235	261	11			

- Molecule 2 is a protein called Interleukin-1 beta convertase.

Mol	Chain	Residues	Atoms					ZeroOcc	AltConf	Trace
2	B	88	Total	C	N	O	S	0	0	0
			718	457	126	128	7			

- Molecule 3 is 3-{2-ETHYL-6-[4-(QUINOXALIN-2-YLAMINO)-BENZOYLAMINO]-HEXANOYLAMINO}-4-OXO-BUTYRIC ACID (three-letter code: 4QB) (formula: C₂₇H₃₁N₅O₅).

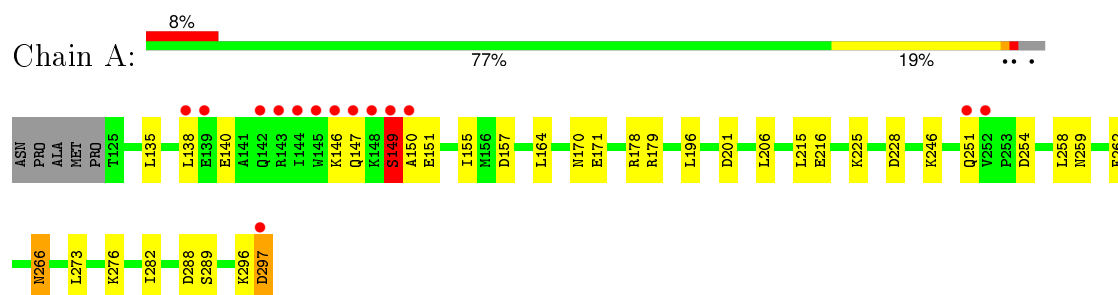


Mol	Chain	Residues	Atoms		ZeroOcc	AltConf
4	A	205	Total 205	O 205	0	0
4	B	75	Total 75	O 75	0	0

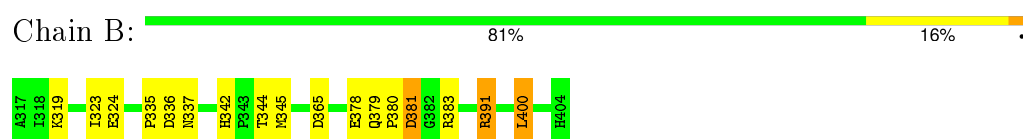
3 Residue-property plots [i](#)

These plots are drawn for all protein, RNA and DNA chains in the entry. The first graphic for a chain summarises the proportions of errors displayed in the second graphic. The second graphic shows the sequence view annotated by issues in geometry and electron density. Residues are color-coded according to the number of geometric quality criteria for which they contain at least one outlier: green = 0, yellow = 1, orange = 2 and red = 3 or more. A red dot above a residue indicates a poor fit to the electron density ($\text{RSRZ} > 2$). Stretches of 2 or more consecutive residues without any outlier are shown as a green connector. Residues present in the sample, but not in the model, are shown in grey.

- Molecule 1: Interleukin-1 beta convertase



- Molecule 2: Interleukin-1 beta convertase



4 Data and refinement statistics

Property	Value	Source
Space group	P 43 21 2	Depositor
Cell constants a, b, c, α , β , γ	63.15Å 63.15Å 161.77Å 90.00° 90.00° 90.00°	Depositor
Resolution (Å)	20.00 – 2.00 18.65 – 2.00	Depositor EDS
% Data completeness (in resolution range)	99.4 (20.00-2.00) 99.4 (18.65-2.00)	Depositor EDS
R_{merge}	0.08	Depositor
R_{sym}	(Not available)	Depositor
$\langle I/\sigma(I) \rangle$ ¹	3.02 (at 2.00Å)	Xtriage
Refinement program	REFMAC 5.1.19	Depositor
R, R_{free}	0.201 , 0.236 0.201 , 0.236	Depositor DCC
R_{free} test set	1167 reflections (5.39%)	DCC
Wilson B-factor (Å ²)	19.3	Xtriage
Anisotropy	0.491	Xtriage
Bulk solvent k_{sol} (e/Å ³), B_{sol} (Å ²)	0.35 , 50.7	EDS
Estimated twinning fraction	No twinning to report.	Xtriage
L-test for twinning ²	$\langle L \rangle = 0.48$, $\langle L^2 \rangle = 0.32$	Xtriage
Outliers	1 of 22811 reflections (0.004%)	Xtriage
F_o, F_c correlation	0.94	EDS
Total number of atoms	2386	wwPDB-VP
Average B, all atoms (Å ²)	23.0	wwPDB-VP

Xtriage's analysis on translational NCS is as follows: *The largest off-origin peak in the Patterson function is 4.93% of the height of the origin peak. No significant pseudotranslation is detected.*

¹Intensities estimated from amplitudes.

²Theoretical values of $\langle |L| \rangle$, $\langle L^2 \rangle$ for acentric reflections are 0.5, 0.375 respectively for untwinned datasets, and 0.333, 0.2 for perfectly twinned datasets.

5 Model quality [i](#)

5.1 Standard geometry [i](#)

Bond lengths and bond angles in the following residue types are not validated in this section: 4QB

The Z score for a bond length (or angle) is the number of standard deviations the observed value is removed from the expected value. A bond length (or angle) with $|Z| > 5$ is considered an outlier worth inspection. RMSZ is the root-mean-square of all Z scores of the bond lengths (or angles).

Mol	Chain	Bond lengths		Bond angles	
		RMSZ	$\# Z > 5$	RMSZ	$\# Z > 5$
1	A	0.30	0/1373	0.67	6/1848 (0.3%)
2	B	0.34	0/738	0.66	2/995 (0.2%)
All	All	0.31	0/2111	0.67	8/2843 (0.3%)

There are no bond length outliers.

All (8) bond angle outliers are listed below:

Mol	Chain	Res	Type	Atoms	Z	Observed(°)	Ideal(°)
1	A	201	ASP	CB-CG-OD2	6.29	123.96	118.30
1	A	228	ASP	CB-CG-OD2	5.95	123.65	118.30
1	A	254	ASP	CB-CG-OD2	5.87	123.58	118.30
2	B	365	ASP	CB-CG-OD2	5.42	123.17	118.30
1	A	157	ASP	CB-CG-OD2	5.38	123.14	118.30
1	A	297	ASP	CB-CG-OD2	5.38	123.14	118.30
2	B	381	ASP	CB-CG-OD2	5.23	123.00	118.30
1	A	288	ASP	CB-CG-OD2	5.19	122.97	118.30

There are no chirality outliers.

There are no planarity outliers.

5.2 Too-close contacts [i](#)

In the following table, the Non-H and H(model) columns list the number of non-hydrogen atoms and hydrogen atoms in the chain respectively. The H(added) column lists the number of hydrogen atoms added and optimized by MolProbity. The Clashes column lists the number of clashes within the asymmetric unit, whereas Symm-Clashes lists symmetry related clashes.

Mol	Chain	Non-H	H(model)	H(added)	Clashes	Symm-Clashes
1	A	1351	0	1361	15	0

Continued on next page...

Continued from previous page...

Mol	Chain	Non-H	H(model)	H(added)	Clashes	Symm-Clashes
2	B	718	0	693	13	0
3	A	37	0	29	1	0
4	A	205	0	0	0	0
4	B	75	0	0	0	0
All	All	2386	0	2083	22	0

The all-atom clashscore is defined as the number of clashes found per 1000 atoms (including hydrogen atoms). The all-atom clashscore for this structure is 5.

All (22) close contacts within the same asymmetric unit are listed below, sorted by their clash magnitude.

Atom-1	Atom-2	Interatomic distance (Å)	Clash overlap (Å)
1:A:259:ASN:HD22	2:B:391:ARG:HH22	1.20	0.88
1:A:266:ASN:HD22	1:A:266:ASN:C	2.03	0.61
2:B:324:GLU:OE2	2:B:391:ARG:HD3	2.06	0.56
1:A:259:ASN:ND2	2:B:391:ARG:HH22	1.97	0.53
3:A:501:4QB:N1	3:A:501:4QB:H23	2.23	0.53
1:A:259:ASN:HD22	2:B:391:ARG:NH2	1.99	0.50
2:B:335:PRO:O	2:B:336:ASP:HB2	2.14	0.48
2:B:342:HIS:HD2	2:B:345:MET:H	1.62	0.47
1:A:170:ASN:ND2	1:A:206:LEU:H	2.15	0.45
1:A:196:LEU:HD22	2:B:400:LEU:HG	1.99	0.45
1:A:171:GLU:HA	1:A:179:ARG:HB2	1.98	0.45
1:A:149:SER:HB3	1:A:150:ALA:H	1.67	0.45
1:A:262:PHE:CE2	2:B:391:ARG:HD2	2.52	0.44
1:A:258:LEU:HD13	1:A:282:ILE:HD11	2.00	0.44
2:B:342:HIS:HD2	2:B:344:THR:H	1.66	0.43
2:B:342:HIS:CD2	2:B:344:THR:H	2.36	0.43
1:A:266:ASN:HB2	2:B:323:ILE:O	2.18	0.43
1:A:266:ASN:ND2	1:A:266:ASN:C	2.72	0.43
1:A:170:ASN:HD21	1:A:206:LEU:H	1.68	0.42
1:A:273:LEU:HA	1:A:276:LYS:HD2	2.02	0.42
1:A:289:SER:HB2	2:B:337:ASN:HD22	1.86	0.41
2:B:379:GLN:HA	2:B:380:PRO:HD3	1.86	0.41

There are no symmetry-related clashes.

5.3 Torsion angles

5.3.1 Protein backbone

In the following table, the Percentiles column shows the percent Ramachandran outliers of the chain as a percentile score with respect to all X-ray entries followed by that with respect to entries of similar resolution.

The Analysed column shows the number of residues for which the backbone conformation was analysed, and the total number of residues.

Mol	Chain	Analysed	Favoured	Allowed	Outliers	Percentiles	
1	A	171/178 (96%)	166 (97%)	4 (2%)	1 (1%)	30	22
2	B	86/88 (98%)	83 (96%)	3 (4%)	0	100	100
All	All	257/266 (97%)	249 (97%)	7 (3%)	1 (0%)	39	33

All (1) Ramachandran outliers are listed below:

Mol	Chain	Res	Type
1	A	149	SER

5.3.2 Protein sidechains

In the following table, the Percentiles column shows the percent sidechain outliers of the chain as a percentile score with respect to all X-ray entries followed by that with respect to entries of similar resolution.

The Analysed column shows the number of residues for which the sidechain conformation was analysed, and the total number of residues.

Mol	Chain	Analysed	Rotameric	Outliers	Percentiles	
1	A	154/158 (98%)	136 (88%)	18 (12%)	7	3
2	B	79/79 (100%)	73 (92%)	6 (8%)	16	10
All	All	233/237 (98%)	209 (90%)	24 (10%)	9	5

All (24) residues with a non-rotameric sidechain are listed below:

Mol	Chain	Res	Type
1	A	135	LEU
1	A	138	LEU
1	A	140	GLU
1	A	146	LYS
1	A	147	GLN

Continued on next page...

Continued from previous page...

Mol	Chain	Res	Type
1	A	149	SER
1	A	151	GLU
1	A	155	ILE
1	A	164	LEU
1	A	178	ARG
1	A	215	LEU
1	A	216	GLU
1	A	225	LYS
1	A	246	LYS
1	A	251	GLN
1	A	266	ASN
1	A	296	LYS
1	A	297	ASP
2	B	319	LYS
2	B	378	GLU
2	B	381	ASP
2	B	383	ARG
2	B	391	ARG
2	B	400	LEU

Some sidechains can be flipped to improve hydrogen bonding and reduce clashes. All (8) such sidechains are listed below:

Mol	Chain	Res	Type
1	A	170	ASN
1	A	251	GLN
1	A	259	ASN
1	A	263	ASN
1	A	266	ASN
2	B	337	ASN
2	B	342	HIS
2	B	358	GLN

5.3.3 RNA ⓘ

There are no RNA molecules in this entry.

5.4 Non-standard residues in protein, DNA, RNA chains ⓘ

There are no non-standard protein/DNA/RNA residues in this entry.

5.5 Carbohydrates

There are no carbohydrates in this entry.

5.6 Ligand geometry

1 ligand is modelled in this entry.

In the following table, the Counts columns list the number of bonds (or angles) for which Mogul statistics could be retrieved, the number of bonds (or angles) that are observed in the model and the number of bonds (or angles) that are defined in the chemical component dictionary. The Link column lists molecule types, if any, to which the group is linked. The Z score for a bond length (or angle) is the number of standard deviations the observed value is removed from the expected value. A bond length (or angle) with $|Z| > 2$ is considered an outlier worth inspection. RMSZ is the root-mean-square of all Z scores of the bond lengths (or angles).

Mol	Type	Chain	Res	Link	Bond lengths			Bond angles		
					Counts	RMSZ	$\# Z > 2$	Counts	RMSZ	$\# Z > 2$
3	4QB	A	501	1	34,39,39	0.87	0	40,51,51	1.11	3 (7%)

In the following table, the Chirals column lists the number of chiral outliers, the number of chiral centers analysed, the number of these observed in the model and the number defined in the chemical component dictionary. Similar counts are reported in the Torsion and Rings columns. '-' means no outliers of that kind were identified.

Mol	Type	Chain	Res	Link	Chirals	Torsions	Rings
3	4QB	A	501	1	-	0/28/32/32	0/3/3/3

There are no bond length outliers.

All (3) bond angle outliers are listed below:

Mol	Chain	Res	Type	Atoms	Z	Observed(°)	Ideal(°)
3	A	501	4QB	O33-C18-C28	-2.27	119.45	125.44
3	A	501	4QB	C27-N2-C29	2.97	120.33	116.95
3	A	501	4QB	C26-N1-C30	4.21	120.83	116.81

There are no chirality outliers.

There are no torsion outliers.

There are no ring outliers.

1 monomer is involved in 1 short contact:

Mol	Chain	Res	Type	Clashes	Symm-Clashes
3	A	501	4QB	1	0

5.7 Other polymers [i](#)

There are no such residues in this entry.

5.8 Polymer linkage issues [i](#)

There are no chain breaks in this entry.

6 Fit of model and data [i](#)

6.1 Protein, DNA and RNA chains [i](#)

In the following table, the column labelled ‘#RSRZ> 2’ contains the number (and percentage) of RSRZ outliers, followed by percent RSRZ outliers for the chain as percentile scores relative to all X-ray entries and entries of similar resolution. The OWAB column contains the minimum, median, 95th percentile and maximum values of the occupancy-weighted average B-factor per residue. The column labelled ‘Q< 0.9’ lists the number of (and percentage) of residues with an average occupancy less than 0.9.

Mol	Chain	Analysed	<RSRZ>	#RSRZ>2	OWAB(Å ²)	Q<0.9
1	A	173/178 (97%)	0.16	14 (8%) 15 15	10, 19, 60, 73	0
2	B	88/88 (100%)	-0.19	0 100 100	9, 16, 34, 40	0
All	All	261/266 (98%)	0.04	14 (5%) 29 31	9, 18, 40, 73	0

All (14) RSRZ outliers are listed below:

Mol	Chain	Res	Type	RSRZ
1	A	149	SER	8.2
1	A	150	ALA	5.4
1	A	143	ARG	4.5
1	A	297	ASP	4.5
1	A	147	GLN	4.3
1	A	142	GLN	3.9
1	A	148	LYS	3.8
1	A	146	LYS	3.6
1	A	138	LEU	3.5
1	A	139	GLU	3.1
1	A	144	ILE	2.9
1	A	145	TRP	2.6
1	A	252	VAL	2.6
1	A	251	GLN	2.6

6.2 Non-standard residues in protein, DNA, RNA chains [i](#)

There are no non-standard protein/DNA/RNA residues in this entry.

6.3 Carbohydrates [i](#)

There are no carbohydrates in this entry.

6.4 Ligands [i](#)

In the following table, the Atoms column lists the number of modelled atoms in the group and the number defined in the chemical component dictionary. LLDF column lists the quality of electron density of the group with respect to its neighbouring residues in protein, DNA or RNA chains. The B-factors column lists the minimum, median, 95th percentile and maximum values of B factors of atoms in the group. The column labelled 'Q< 0.9' lists the number of atoms with occupancy less than 0.9.

Mol	Type	Chain	Res	Atoms	RSCC	RSR	LLDF	B-factors(\AA^2)	Q<0.9
3	4QB	A	501	37/37	0.88	0.16	0.72	19,33,35,36	0

6.5 Other polymers [i](#)

There are no such residues in this entry.