



Full wwPDB X-ray Structure Validation Report ⓘ

Jan 31, 2016 – 10:05 PM GMT

PDB ID : 1S17
Title : Identification of Novel Potent Bicyclic Peptide Deformylase Inhibitors
Authors : Molteni, V.; He, X.; Nabakka, J.; Yang, K.; Kreusch, A.; Gordon, P.; Bursulaya, B.; Ryder, N.S.; Goldberg, R.; He, Y.
Deposited on : 2004-01-05
Resolution : 1.95 Å(reported)

This is a Full wwPDB X-ray Structure Validation Report for a publicly released PDB entry.
We welcome your comments at validation@mail.wwpdb.org
A user guide is available at
<http://wwpdb.org/validation/2016/XrayValidationReportHelp>
with specific help available everywhere you see the ⓘ symbol.

The following versions of software and data (see [references ⓘ](#)) were used in the production of this report:

MolProbity : 4.02b-467
Mogul : 1.7 (RC4), CSD as536be (2015)
Xtriage (Phenix) : **NOT EXECUTED**
EDS : **NOT EXECUTED**
Percentile statistics : 20151230.v01 (using entries in the PDB archive December 30th 2015)
Ideal geometry (proteins) : Engh & Huber (2001)
Ideal geometry (DNA, RNA) : Parkinson et al. (1996)
Validation Pipeline (wwPDB-VP) : trunk26865

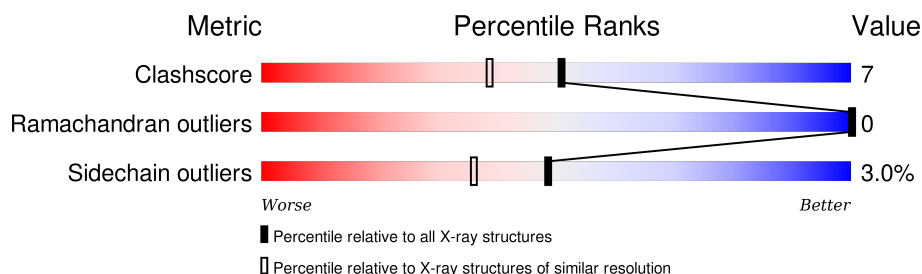
1 Overall quality at a glance

The following experimental techniques were used to determine the structure:

X-RAY DIFFRACTION

The reported resolution of this entry is 1.95 Å.

Percentile scores (ranging between 0-100) for global validation metrics of the entry are shown in the following graphic. The table shows the number of entries on which the scores are based.



Metric	Whole archive (#Entries)	Similar resolution (#Entries, resolution range(Å))
Clashscore	102246	1953 (1.96-1.96)
Ramachandran outliers	100387	1936 (1.96-1.96)
Sidechain outliers	100360	1936 (1.96-1.96)

The table below summarises the geometric issues observed across the polymeric chains and their fit to the electron density. The red, orange, yellow and green segments on the lower bar indicate the fraction of residues that contain outliers for ≥ 3 , 2, 1 and 0 types of geometric quality criteria. A grey segment represents the fraction of residues that are not modelled. The numeric value for each fraction is indicated below the corresponding segment, with a dot representing fractions $\leq 5\%$. The upper red bar (where present) indicates the fraction of residues that have poor fit to the electron density. The numeric value is given above the bar.

Note EDS was not executed.

Mol	Chain	Length	Quality of chain
1	A	180	
1	B	180	

The following table lists non-polymeric compounds, carbohydrate monomers and non-standard residues in protein, DNA, RNA chains that are outliers for geometric or electron-density-fit criteria:

Mol	Type	Chain	Res	Chirality	Geometry	Clashes	Electron density
4	GOL	A	401	-	X	-	-

2 Entry composition

There are 5 unique types of molecules in this entry. The entry contains 2918 atoms, of which 0 are hydrogens and 0 are deuteriums.

In the tables below, the ZeroOcc column contains the number of atoms modelled with zero occupancy, the AltConf column contains the number of residues with at least one atom in alternate conformation and the Trace column contains the number of residues modelled with at most 2 atoms.

- Molecule 1 is a protein called Peptide deformylase.

Mol	Chain	Residues	Atoms					ZeroOcc	AltConf	Trace
1	A	166	Total	C	N	O	S	0	0	0
			1342	846	234	255	7			
1	B	164	Total	C	N	O	S	0	0	0
			1328	838	231	252	7			

There are 26 discrepancies between the modelled and reference sequences:

Chain	Residue	Modelled	Actual	Comment	Reference
A	-11	MET	-	EXPRESSION TAG	UNP Q9I7A8
A	-10	GLY	-	EXPRESSION TAG	UNP Q9I7A8
A	-9	SER	-	EXPRESSION TAG	UNP Q9I7A8
A	-8	ASP	-	EXPRESSION TAG	UNP Q9I7A8
A	-7	LYS	-	EXPRESSION TAG	UNP Q9I7A8
A	-6	ILE	-	EXPRESSION TAG	UNP Q9I7A8
A	-5	HIS	-	EXPRESSION TAG	UNP Q9I7A8
A	-4	HIS	-	EXPRESSION TAG	UNP Q9I7A8
A	-3	HIS	-	EXPRESSION TAG	UNP Q9I7A8
A	-2	HIS	-	EXPRESSION TAG	UNP Q9I7A8
A	-1	HIS	-	EXPRESSION TAG	UNP Q9I7A8
A	0	HIS	-	EXPRESSION TAG	UNP Q9I7A8
A	84	GLU	ASP	CONFLICT	UNP Q9I7A8
B	-11	MET	-	EXPRESSION TAG	UNP Q9I7A8
B	-10	GLY	-	EXPRESSION TAG	UNP Q9I7A8
B	-9	SER	-	EXPRESSION TAG	UNP Q9I7A8
B	-8	ASP	-	EXPRESSION TAG	UNP Q9I7A8
B	-7	LYS	-	EXPRESSION TAG	UNP Q9I7A8
B	-6	ILE	-	EXPRESSION TAG	UNP Q9I7A8
B	-5	HIS	-	EXPRESSION TAG	UNP Q9I7A8
B	-4	HIS	-	EXPRESSION TAG	UNP Q9I7A8
B	-3	HIS	-	EXPRESSION TAG	UNP Q9I7A8
B	-2	HIS	-	EXPRESSION TAG	UNP Q9I7A8
B	-1	HIS	-	EXPRESSION TAG	UNP Q9I7A8
B	0	HIS	-	EXPRESSION TAG	UNP Q9I7A8

Continued on next page...

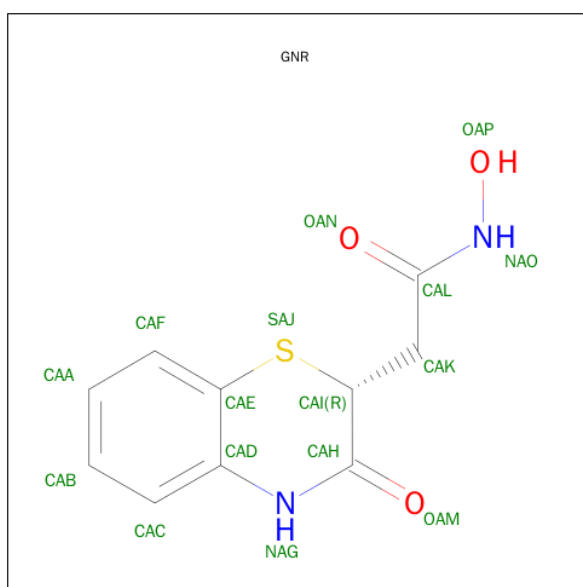
Continued from previous page...

Chain	Residue	Modelled	Actual	Comment	Reference
B	84	GLU	ASP	CONFLICT	UNP Q9I7A8

- Molecule 2 is NICKEL (II) ION (three-letter code: NI) (formula: Ni).

Mol	Chain	Residues	Atoms	ZeroOcc	AltConf
2	B	1	Total Ni 1 1	0	0
2	A	1	Total Ni 1 1	0	0

- Molecule 3 is 2-(3,4-DIHYDRO-3-OXO-2H-BENZO[B][1,4]THIAZIN-2-YL)-N-HYDROXY ACETAMIDE (three-letter code: GNR) (formula: C₁₀H₁₀N₂O₃S).



Mol	Chain	Residues	Atoms	ZeroOcc	AltConf
3	A	1	Total C N O S 16 10 2 3 1	0	0
3	B	1	Total C N O S 16 10 2 3 1	0	0

- Molecule 4 is GLYCEROL (three-letter code: GOL) (formula: C₃H₈O₃).





Mol	Chain	Residues	Atoms			ZeroOcc	AltConf
4	A	1	Total	C	O	0	0
			6	3	3		

- Molecule 5 is water.

Mol	Chain	Residues	Atoms		ZeroOcc	AltConf
5	A	122	Total	O	0	0
			122	122		
5	B	86	Total	O	0	0
			86	86		

Note EDS was not executed.

- Chain A: 

- Chain B:  80% 9% 9%
- | Amino Acid | Frequency (%) |
|------------|---------------|
| MET | 0 |
| GLY | 0 |
| SER | 0 |
| ASP | 0 |
| LYS | 0 |
| ILE | 0 |
| HTS | 0 |
| HTS | 0 |
| HTS | 0 |
| HTS | 0 |
| HTS | 0 |
| HTS | 0 |
| HTS | 0 |
| MET | 0 |
| A2 | 80 |
| R13 | 0 |
| E41 | 0 |
| E65 | 0 |
| E79 | 0 |
| E84 | 0 |
| E85 | 0 |
| D86 | 0 |
| Q87 | 0 |
| Y88 | 0 |
| Q89 | 0 |
| E90 | 0 |
| M101 | 0 |
| D102 | 0 |
| D103 | 0 |
| Q106 | 0 |
| K107 | 0 |
| I110 | 0 |
| E121 | 0 |
| E125 | 0 |
| E135 | 0 |
| R157 | 0 |
| K158 | 0 |
| R165 | 0 |
| GLN | 9 |
| GLN | 9 |
| ALA | 0 |

4 Data and refinement statistics

Xtriage (Phenix) and EDS were not executed - this section will therefore be incomplete.

Property	Value	Source
Space group	P 21 21 21	Depositor
Cell constants a, b, c, α , β , γ	69.01 Å 73.99 Å 76.86 Å 90.00° 90.00° 90.00°	Depositor
Resolution (Å)	25.68 – 1.95	Depositor
% Data completeness (in resolution range)	98.7 (25.68-1.95)	Depositor
R_{merge}	(Not available)	Depositor
R_{sym}	0.07	Depositor
Refinement program	CNS	Depositor
R, R_{free}	0.196 , 0.233	Depositor
Estimated twinning fraction	No twinning to report.	Xtriage
Total number of atoms	2918	wwPDB-VP
Average B, all atoms (Å ²)	26.0	wwPDB-VP

5 Model quality [i](#)

5.1 Standard geometry [i](#)

Bond lengths and bond angles in the following residue types are not validated in this section: GNR, GOL, NI

The Z score for a bond length (or angle) is the number of standard deviations the observed value is removed from the expected value. A bond length (or angle) with $|Z| > 5$ is considered an outlier worth inspection. RMSZ is the root-mean-square of all Z scores of the bond lengths (or angles).

Mol	Chain	Bond lengths		Bond angles	
		RMSZ	$\# Z > 5$	RMSZ	$\# Z > 5$
1	A	0.84	0/1366	0.88	1/1846 (0.1%)
1	B	0.81	0/1352	0.92	2/1827 (0.1%)
All	All	0.83	0/2718	0.90	3/3673 (0.1%)

There are no bond length outliers.

All (3) bond angle outliers are listed below:

Mol	Chain	Res	Type	Atoms	Z	Observed(°)	Ideal(°)
1	B	13	ARG	NE-CZ-NH1	-6.28	117.16	120.30
1	A	61	MET	CG-SD-CE	5.72	109.34	100.20
1	B	157	ARG	NE-CZ-NH1	5.42	123.01	120.30

There are no chirality outliers.

There are no planarity outliers.

5.2 Too-close contacts [i](#)

In the following table, the Non-H and H(model) columns list the number of non-hydrogen atoms and hydrogen atoms in the chain respectively. The H(added) column lists the number of hydrogen atoms added and optimized by MolProbity. The Clashes column lists the number of clashes within the asymmetric unit, whereas Symm-Clashes lists symmetry related clashes.

Mol	Chain	Non-H	H(model)	H(added)	Clashes	Symm-Clashes
1	A	1342	0	1334	21	0
1	B	1328	0	1324	16	0
2	A	1	0	0	0	0
2	B	1	0	0	0	0
3	A	16	0	9	4	0
3	B	16	0	9	5	0

Continued on next page...

Continued from previous page...

Mol	Chain	Non-H	H(model)	H(added)	Clashes	Symm-Clashes
4	A	6	0	3	1	0
5	A	122	0	0	1	0
5	B	86	0	0	5	0
All	All	2918	0	2679	37	0

The all-atom clashscore is defined as the number of clashes found per 1000 atoms (including hydrogen atoms). The all-atom clashscore for this structure is 7.

All (37) close contacts within the same asymmetric unit are listed below, sorted by their clash magnitude.

Atom-1	Atom-2	Interatomic distance (Å)	Clash overlap (Å)
1:A:86:ASP:HB2	1:A:106:GLN:HG2	1.15	1.10
1:B:106:GLN:HG2	5:B:674:HOH:O	1.65	0.95
1:B:88:TYR:HE2	3:B:601:GNR:HAB	1.34	0.93
1:A:86:ASP:HB2	1:A:106:GLN:CG	2.01	0.90
1:B:88:TYR:CE2	3:B:601:GNR:HAB	2.11	0.86
1:B:107:LYS:HG3	1:B:125:GLU:HG2	1.64	0.78
1:A:86:ASP:CG	1:A:106:GLN:HE21	1.90	0.74
1:B:84:GLU:O	5:B:674:HOH:O	2.09	0.70
1:A:86:ASP:CB	1:A:106:GLN:HG2	2.08	0.69
1:A:87:GLN:HG3	1:A:103:ASP:OD2	1.95	0.67
1:A:90:GLU:HG2	3:A:501:GNR:HAA	1.77	0.66
1:A:88:TYR:HE2	3:A:501:GNR:HAB	1.61	0.65
1:A:67:LYS:HE3	5:A:588:HOH:O	1.97	0.63
1:A:114:ASP:HB2	4:A:401:GOL:C1	2.28	0.63
1:B:106:GLN:CG	5:B:674:HOH:O	2.36	0.62
1:B:135:GLU:OE2	3:B:601:GNR:NAO	2.32	0.60
1:A:86:ASP:CB	1:A:106:GLN:HE21	2.16	0.58
1:B:90:GLU:HG2	3:B:601:GNR:HAA	1.86	0.57
1:A:135:GLU:OE2	3:A:501:GNR:NAO	2.37	0.56
1:A:86:ASP:HB2	1:A:106:GLN:HE21	1.73	0.53
1:A:82:THR:HG1	1:A:84:GLU:H	1.54	0.53
1:A:67:LYS:HE3	1:A:67:LYS:N	2.25	0.51
1:A:107:LYS:HG3	1:A:125:GLU:HG2	1.93	0.50
1:B:79:GLU:HG2	5:B:684:HOH:O	2.14	0.48
1:B:87:GLN:NE2	1:B:103:ASP:OD1	2.47	0.47
1:B:90:GLU:HG2	3:B:601:GNR:CAA	2.44	0.47
1:A:88:TYR:CE2	3:A:501:GNR:HAB	2.47	0.47
1:B:86:ASP:OD2	1:B:106:GLN:HG2	2.14	0.46
1:B:87:GLN:NE2	1:B:101:ASN:HB3	2.31	0.45
1:B:158:LYS:HD2	1:B:158:LYS:HA	1.66	0.45

Continued on next page...

Continued from previous page...

Atom-1	Atom-2	Interatomic distance (Å)	Clash overlap (Å)
1:B:110:ILE:O	1:B:121:GLU:HA	2.17	0.45
1:B:41:GLU:HG3	5:B:619:HOH:O	2.18	0.44
1:A:66:ASP:OD1	1:A:66:ASP:N	2.51	0.44
1:A:86:ASP:HB2	1:A:106:GLN:NE2	2.34	0.43
1:A:157:ARG:O	1:A:161:GLU:HG3	2.20	0.42
1:A:3:ILE:HD11	1:A:41:GLU:HG3	2.01	0.41
1:A:162:LYS:O	1:A:166:GLN:HG3	2.21	0.41

There are no symmetry-related clashes.

5.3 Torsion angles [i](#)

5.3.1 Protein backbone [i](#)

In the following table, the Percentiles column shows the percent Ramachandran outliers of the chain as a percentile score with respect to all X-ray entries followed by that with respect to entries of similar resolution.

The Analysed column shows the number of residues for which the backbone conformation was analysed, and the total number of residues.

Mol	Chain	Analysed	Favoured	Allowed	Outliers	Percentiles	
1	A	164/180 (91%)	163 (99%)	1 (1%)	0	100	100
1	B	162/180 (90%)	160 (99%)	2 (1%)	0	100	100
All	All	326/360 (91%)	323 (99%)	3 (1%)	0	100	100

There are no Ramachandran outliers to report.

5.3.2 Protein sidechains [i](#)

In the following table, the Percentiles column shows the percent sidechain outliers of the chain as a percentile score with respect to all X-ray entries followed by that with respect to entries of similar resolution.

The Analysed column shows the number of residues for which the sidechain conformation was analysed, and the total number of residues.

Mol	Chain	Analysed	Rotameric	Outliers	Percentiles	
1	A	149/162 (92%)	145 (97%)	4 (3%)	52	41

Continued on next page...

Continued from previous page...

Mol	Chain	Analysed	Rotameric	Outliers	Percentiles	
1	B	148/162 (91%)	143 (97%)	5 (3%)	44	30
All	All	297/324 (92%)	288 (97%)	9 (3%)	48	36

All (9) residues with a non-rotameric sidechain are listed below:

Mol	Chain	Res	Type
1	A	26	ASP
1	A	67	LYS
1	A	82	THR
1	A	127	LEU
1	B	41	GLU
1	B	65	GLU
1	B	103	ASP
1	B	106	GLN
1	B	165	ARG

Some sidechains can be flipped to improve hydrogen bonding and reduce clashes. All (2) such sidechains are listed below:

Mol	Chain	Res	Type
1	A	87	GLN
1	A	106	GLN

5.3.3 RNA ⓘ

There are no RNA molecules in this entry.

5.4 Non-standard residues in protein, DNA, RNA chains ⓘ

There are no non-standard protein/DNA/RNA residues in this entry.

5.5 Carbohydrates ⓘ

There are no carbohydrates in this entry.

5.6 Ligand geometry ⓘ

Of 5 ligands modelled in this entry, 2 are monoatomic - leaving 3 for Mogul analysis.

In the following table, the Counts columns list the number of bonds (or angles) for which Mogul statistics could be retrieved, the number of bonds (or angles) that are observed in the model and the number of bonds (or angles) that are defined in the chemical component dictionary. The Link column lists molecule types, if any, to which the group is linked. The Z score for a bond length (or angle) is the number of standard deviations the observed value is removed from the expected value. A bond length (or angle) with $|Z| > 2$ is considered an outlier worth inspection. RMSZ is the root-mean-square of all Z scores of the bond lengths (or angles).

Mol	Type	Chain	Res	Link	Bond lengths			Bond angles		
					Counts	RMSZ	$\# Z > 2$	Counts	RMSZ	$\# Z > 2$
4	GOL	A	401	-	5,5,5	4.62	5 (100%)	5,5,5	2.45	3 (60%)
3	GNR	A	501	2	16,17,17	1.41	3 (18%)	16,23,23	1.02	1 (6%)
3	GNR	B	601	2	16,17,17	1.37	3 (18%)	16,23,23	1.12	1 (6%)

In the following table, the Chirals column lists the number of chiral outliers, the number of chiral centers analysed, the number of these observed in the model and the number defined in the chemical component dictionary. Similar counts are reported in the Torsion and Rings columns. '-' means no outliers of that kind were identified.

Mol	Type	Chain	Res	Link	Chirals	Torsions	Rings
4	GOL	A	401	-	-	0/4/4/4	0/0/0/0
3	GNR	A	501	2	-	0/5/18/18	0/2/2/2
3	GNR	B	601	2	-	0/5/18/18	0/2/2/2

All (11) bond length outliers are listed below:

Mol	Chain	Res	Type	Atoms	Z	Observed(Å)	Ideal(Å)
4	A	401	GOL	C1-C2	-6.04	1.29	1.52
4	A	401	GOL	O2-C2	-5.89	1.25	1.43
4	A	401	GOL	O1-C1	-3.61	1.26	1.42
3	B	601	GNR	OAP-NAO	-3.16	1.34	1.39
4	A	401	GOL	C3-C2	-3.15	1.40	1.52
3	A	501	GNR	OAP-NAO	-2.58	1.35	1.39
3	B	601	GNR	CAE-SAJ	2.15	1.79	1.76
3	B	601	GNR	CAH-NAG	2.26	1.37	1.34
3	A	501	GNR	CAE-SAJ	2.65	1.80	1.76
3	A	501	GNR	CAH-NAG	2.74	1.38	1.34
4	A	401	GOL	O3-C3	3.55	1.57	1.42

All (5) bond angle outliers are listed below:

Mol	Chain	Res	Type	Atoms	Z	Observed(°)	Ideal(°)
3	A	501	GNR	CAI-CAH-NAG	2.22	119.51	116.45
4	A	401	GOL	O2-C2-C3	2.28	119.09	108.65

Continued on next page...

Continued from previous page...

Mol	Chain	Res	Type	Atoms	Z	Observed(°)	Ideal(°)
3	B	601	GNR	CAI-CAH-NAG	2.76	120.26	116.45
4	A	401	GOL	O2-C2-C1	2.76	121.31	108.65
4	A	401	GOL	O1-C1-C2	3.45	126.89	110.18

There are no chirality outliers.

There are no torsion outliers.

There are no ring outliers.

3 monomers are involved in 10 short contacts:

Mol	Chain	Res	Type	Clashes	Symm-Clashes
4	A	401	GOL	1	0
3	A	501	GNR	4	0
3	B	601	GNR	5	0

5.7 Other polymers [i](#)

There are no such residues in this entry.

5.8 Polymer linkage issues [i](#)

There are no chain breaks in this entry.

6 Fit of model and data [i](#)

6.1 Protein, DNA and RNA chains [i](#)

EDS was not executed - this section will therefore be empty.

6.2 Non-standard residues in protein, DNA, RNA chains [i](#)

EDS was not executed - this section will therefore be empty.

6.3 Carbohydrates [i](#)

EDS was not executed - this section will therefore be empty.

6.4 Ligands [i](#)

EDS was not executed - this section will therefore be empty.

6.5 Other polymers [i](#)

EDS was not executed - this section will therefore be empty.