



Full wwPDB X-ray Structure Validation Report ⓘ

Feb 1, 2016 – 08:28 PM GMT

PDB ID : 4S1S
Title : Crystal structure of a VRC01-lineage antibody, 45-VRC01.H5.F-185917, in complex with clade A/E HIV-1 gp120 core
Authors : Kwon, Y.D.; Yang, Y.; Zhang, B.; Kwong, P.D.
Deposited on : 2015-01-14
Resolution : 3.39 Å(reported)

This is a Full wwPDB X-ray Structure Validation Report for a publicly released PDB entry.
We welcome your comments at validation@mail.wwpdb.org
A user guide is available at
<http://wwpdb.org/validation/2016/XrayValidationReportHelp>
with specific help available everywhere you see the ⓘ symbol.

The following versions of software and data (see [references ⓘ](#)) were used in the production of this report:

MolProbity : 4.02b-467
Mogul : 1.7 (RC4), CSD as536be (2015)
Xtriage (Phenix) : 1.9-1692
EDS : rb-20026688
Percentile statistics : 20151230.v01 (using entries in the PDB archive December 30th 2015)
Refmac : 5.8.0135
CCP4 : 6.5.0
Ideal geometry (proteins) : Engh & Huber (2001)
Ideal geometry (DNA, RNA) : Parkinson et al. (1996)
Validation Pipeline (wwPDB-VP) : trunk26865

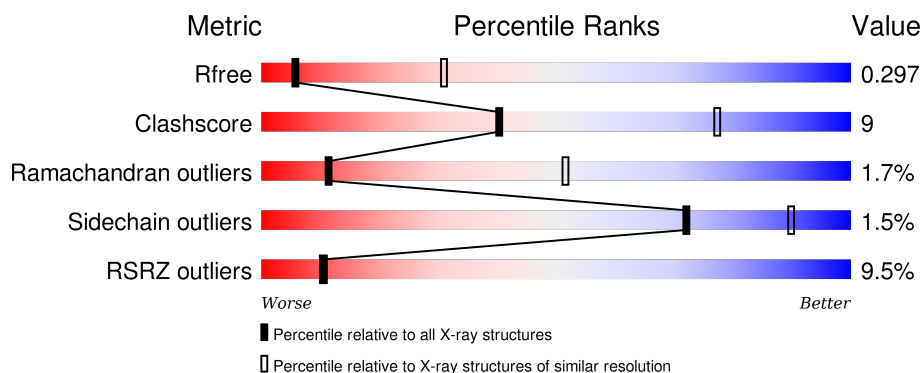
1 Overall quality at a glance

The following experimental techniques were used to determine the structure:

X-RAY DIFFRACTION

The reported resolution of this entry is 3.39 Å.

Percentile scores (ranging between 0-100) for global validation metrics of the entry are shown in the following graphic. The table shows the number of entries on which the scores are based.



Metric	Whole archive (#Entries)	Similar resolution (#Entries, resolution range(Å))
R_{free}	91344	1476 (3.50-3.30)
Clashscore	102246	1611 (3.50-3.30)
Ramachandran outliers	100387	1571 (3.50-3.30)
Sidechain outliers	100360	1571 (3.50-3.30)
RSRZ outliers	91569	1485 (3.50-3.30)

The table below summarises the geometric issues observed across the polymeric chains and their fit to the electron density. The red, orange, yellow and green segments on the lower bar indicate the fraction of residues that contain outliers for ≥ 3 , 2, 1 and 0 types of geometric quality criteria. A grey segment represents the fraction of residues that are not modelled. The numeric value for each fraction is indicated below the corresponding segment, with a dot representing fractions $\leq 5\%$. The upper red bar (where present) indicates the fraction of residues that have poor fit to the electron density. The numeric value is given above the bar.

Mol	Chain	Length	Quality of chain
1	G	353	<div> <div>7%</div> <div>78%</div> <div>18%</div> <div>.</div> </div>
2	H	228	<div> <div>12%</div> <div>75%</div> <div>23%</div> <div>.</div> </div>
3	L	210	<div> <div>10%</div> <div>80%</div> <div>19%</div> <div>.</div> </div>

The following table lists non-polymeric compounds, carbohydrate monomers and non-standard residues in protein, DNA, RNA chains that are outliers for geometric or electron-density-fit criteria:

Mol	Type	Chain	Res	Chirality	Geometry	Clashes	Electron density
4	NAG	G	510	-	-	-	X

2 Entry composition

There are 5 unique types of molecules in this entry. The entry contains 6187 atoms, of which 0 are hydrogens and 0 are deuteriums.

In the tables below, the ZeroOcc column contains the number of atoms modelled with zero occupancy, the AltConf column contains the number of residues with at least one atom in alternate conformation and the Trace column contains the number of residues modelled with at most 2 atoms.

- Molecule 1 is a protein called clade A/E 93TH057 HIV-1 gp120 core.

Mol	Chain	Residues	Atoms					ZeroOcc	AltConf	Trace
1	G	342	Total	C	N	O	S	0	0	0
			2677	1680	466	509	22			

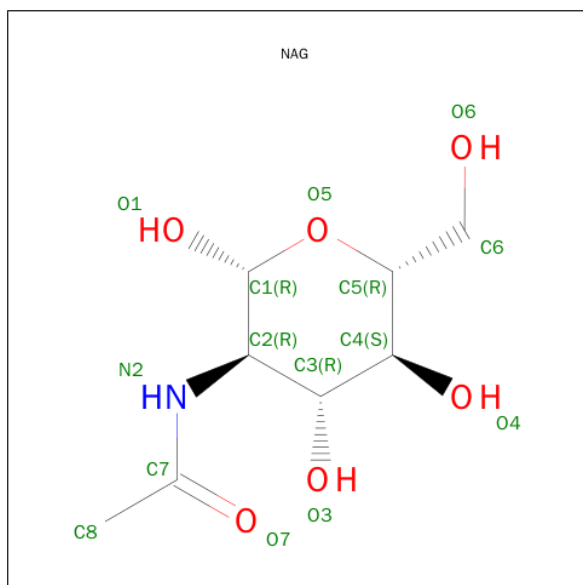
- Molecule 2 is a protein called Fab of VRC01-lineage antibody,45-VRC01.H5.F-185917 heavy chain.

Mol	Chain	Residues	Atoms					ZeroOcc	AltConf	Trace
2	H	228	Total	C	N	O	S	0	0	0
			1746	1108	303	327	8			

- Molecule 3 is a protein called Fab of VRC01 light chain.

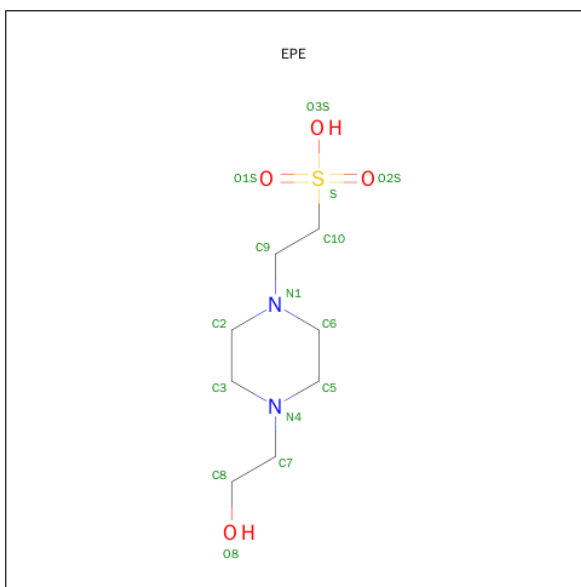
Mol	Chain	Residues	Atoms					ZeroOcc	AltConf	Trace
3	L	208	Total	C	N	O	S	0	0	0
			1609	1008	273	323	5			

- Molecule 4 is SUGAR (N-ACETYL-D-GLUCOSAMINE) (three-letter code: NAG) (formula: $C_8H_{15}NO_6$).



Mol	Chain	Residues	Atoms				ZeroOcc	AltConf
4	G	1	Total	C	N	O	0	0
			14	8	1	5		
4	G	1	Total	C	N	O	0	0
			14	8	1	5		
4	G	1	Total	C	N	O	0	0
			14	8	1	5		
4	G	1	Total	C	N	O	0	0
			14	8	1	5		
4	G	1	Total	C	N	O	0	0
			14	8	1	5		
4	G	1	Total	C	N	O	0	0
			14	8	1	5		
4	G	1	Total	C	N	O	0	0
			14	8	1	5		
4	G	1	Total	C	N	O	0	0
			14	8	1	5		

- Molecule 5 is 4-(2-HYDROXYETHYL)-1-PIPERAZINE ETHANESULFONIC ACID (three-letter code: EPE) (formula: C₈H₁₈N₂O₄S).



Mol	Chain	Residues	Atoms					ZeroOcc	AltConf
5	G	1	Total	C	N	O	S	0	0
			15	8	2	4	1		

4 Data and refinement statistics

Property	Value	Source
Space group	P 21 21 21	Depositor
Cell constants a, b, c, α , β , γ	55.39Å 67.66Å 266.75Å 90.00° 90.00° 90.00°	Depositor
Resolution (Å)	47.50 – 3.39 47.50 – 3.39	Depositor EDS
% Data completeness (in resolution range)	96.8 (47.50-3.39) 92.2 (47.50-3.39)	Depositor EDS
R_{merge}	0.07	Depositor
R_{sym}	0.10	Depositor
$\langle I/\sigma(I) \rangle$ ¹	2.51 (at 3.40Å)	Xtriage
Refinement program	PHENIX (phenix.refine: dev_1839)	Depositor
R, R_{free}	0.262 , 0.300 0.257 , 0.297	Depositor DCC
R_{free} test set	666 reflections (4.93%)	DCC
Wilson B-factor (Å ²)	83.4	Xtriage
Anisotropy	0.219	Xtriage
Bulk solvent k_{sol} (e/Å ³), B_{sol} (Å ²)	0.27 , 47.2	EDS
Estimated twinning fraction	No twinning to report.	Xtriage
L-test for twinning ²	$\langle L \rangle = 0.45$, $\langle L^2 \rangle = 0.28$	Xtriage
Outliers	0 of 14193 reflections	Xtriage
F_o, F_c correlation	0.88	EDS
Total number of atoms	6187	wwPDB-VP
Average B, all atoms (Å ²)	110.0	wwPDB-VP

Xtriage's analysis on translational NCS is as follows: *The largest off-origin peak in the Patterson function is 4.01% of the height of the origin peak. No significant pseudotranslation is detected.*

¹Intensities estimated from amplitudes.

²Theoretical values of $\langle |L| \rangle$, $\langle L^2 \rangle$ for acentric reflections are 0.5, 0.375 respectively for untwinned datasets, and 0.333, 0.2 for perfectly twinned datasets.

5 Model quality [i](#)

5.1 Standard geometry [i](#)

Bond lengths and bond angles in the following residue types are not validated in this section: EPE, NAG

The Z score for a bond length (or angle) is the number of standard deviations the observed value is removed from the expected value. A bond length (or angle) with $|Z| > 5$ is considered an outlier worth inspection. RMSZ is the root-mean-square of all Z scores of the bond lengths (or angles).

Mol	Chain	Bond lengths		Bond angles	
		RMSZ	$\# Z > 5$	RMSZ	$\# Z > 5$
1	G	0.25	0/2733	0.54	0/3709
2	H	0.23	0/1797	0.46	0/2449
3	L	0.20	0/1646	0.37	0/2235
All	All	0.23	0/6176	0.48	0/8393

There are no bond length outliers.

There are no bond angle outliers.

There are no chirality outliers.

There are no planarity outliers.

5.2 Too-close contacts [i](#)

In the following table, the Non-H and H(model) columns list the number of non-hydrogen atoms and hydrogen atoms in the chain respectively. The H(added) column lists the number of hydrogen atoms added and optimized by MolProbity. The Clashes column lists the number of clashes within the asymmetric unit, whereas Symm-Clashes lists symmetry related clashes.

Mol	Chain	Non-H	H(model)	H(added)	Clashes	Symm-Clashes
1	G	2677	0	2611	37	0
2	H	1746	0	1709	50	0
3	L	1609	0	1547	22	0
4	G	140	0	130	3	0
5	G	15	0	17	0	0
All	All	6187	0	6014	106	0

The all-atom clashscore is defined as the number of clashes found per 1000 atoms (including hydrogen atoms). The all-atom clashscore for this structure is 9.

All (106) close contacts within the same asymmetric unit are listed below, sorted by their clash

magnitude.

Atom-1	Atom-2	Interatomic distance (Å)	Clash overlap (Å)
2:H:138:LEU:HD11	2:H:211:VAL:CG1	1.13	1.54
2:H:138:LEU:CD1	2:H:211:VAL:CG1	2.06	1.32
2:H:138:LEU:CD1	2:H:211:VAL:HG11	1.63	1.22
2:H:138:LEU:HD11	2:H:211:VAL:HG12	1.11	1.06
2:H:138:LEU:HD11	2:H:211:VAL:HG11	1.05	1.05
2:H:97:ASP:HB3	2:H:98:CYS:HA	1.39	1.02
2:H:138:LEU:HD11	2:H:211:VAL:HG13	1.50	0.88
2:H:138:LEU:CD1	2:H:211:VAL:HG12	1.89	0.79
2:H:126:PRO:HD3	2:H:138:LEU:HD13	1.67	0.76
2:H:138:LEU:CG	2:H:211:VAL:HG11	2.17	0.74
1:G:298:ARG:NH2	1:G:439:ILE:O	2.25	0.69
2:H:82:VAL:HG12	2:H:82(C):LEU:CD2	2.24	0.68
1:G:101:VAL:HG21	1:G:480:ARG:HG2	1.78	0.65
1:G:277:LEU:O	1:G:456:ARG:NH2	2.29	0.65
2:H:97:ASP:HB3	2:H:98:CYS:CA	2.24	0.65
2:H:138:LEU:CG	2:H:211:VAL:CG1	2.74	0.65
2:H:197:ASN:ND2	2:H:208:ASP:OD1	2.30	0.65
2:H:67:PHE:CE1	2:H:82:VAL:HG22	2.34	0.63
3:L:79:GLU:O	3:L:81:GLY:N	2.34	0.61
1:G:280:ASN:ND2	3:L:96:GLU:OE1	2.34	0.61
2:H:126:PRO:HB2	2:H:127:SER:HA	1.82	0.60
1:G:233:PHE:O	1:G:273:ARG:NH2	2.30	0.59
2:H:12:LYS:HE3	2:H:18:VAL:HG22	1.84	0.59
2:H:115:SER:HB3	2:H:116:THR:HA	1.84	0.59
3:L:63:SER:OG	3:L:74:THR:OG1	2.20	0.58
2:H:82:VAL:HG12	2:H:82(C):LEU:HD21	1.85	0.57
2:H:82:VAL:CG1	2:H:82(C):LEU:HD21	2.34	0.57
2:H:138:LEU:HD21	2:H:211:VAL:HG12	1.87	0.56
1:G:343:LYS:O	1:G:346:THR:OG1	2.24	0.56
1:G:298:ARG:NH1	1:G:326:ILE:O	2.35	0.56
1:G:461:ASN:OD1	1:G:462:ASN:N	2.37	0.56
2:H:159:LEU:HD21	2:H:182:VAL:HG11	1.88	0.56
1:G:361:PHE:HB3	1:G:391:PHE:HB3	1.88	0.55
2:H:82:VAL:HG12	2:H:82(C):LEU:HD23	1.87	0.55
2:H:67:PHE:CD1	2:H:80:LEU:HD11	2.42	0.55
3:L:191:HIS:O	3:L:213:ARG:NH1	2.39	0.55
1:G:260:LEU:HD12	1:G:451:GLY:HA3	1.90	0.54
2:H:82:VAL:CG1	2:H:82(C):LEU:CD2	2.85	0.54
2:H:67:PHE:HD1	2:H:80:LEU:HD11	1.73	0.53
1:G:121:LYS:N	1:G:201:ILE:O	2.38	0.53
2:H:100(A):ASP:HB3	2:H:100(B):PRO:HD3	1.89	0.53

Continued on next page...

Continued from previous page...

Atom-1	Atom-2	Interatomic distance (Å)	Clash overlap (Å)
1:G:291:SER:OG	4:G:510:NAG:O6	2.28	0.52
2:H:47:TRP:CZ2	2:H:49:GLY:HA2	2.46	0.51
3:L:47:VAL:HG12	3:L:48:ILE:HG12	1.93	0.50
1:G:120:VAL:HB	1:G:434:MET:HE3	1.94	0.50
1:G:454:LEU:HD23	1:G:470:PRO:HA	1.93	0.50
2:H:138:LEU:CD2	2:H:211:VAL:HG12	2.42	0.49
2:H:68:THR:OG1	2:H:81:ASP:HB2	2.13	0.49
2:H:200:HIS:CD2	2:H:202:PRO:HD2	2.47	0.49
1:G:119:CYS:N	1:G:205:CYS:HB3	2.27	0.49
1:G:455:THR:HG23	1:G:471:GLY:HA3	1.93	0.49
1:G:241:ASN:HB3	4:G:502:NAG:O5	2.12	0.49
3:L:120:PHE:HB2	3:L:135:VAL:HB	1.95	0.49
3:L:47:VAL:HA	3:L:58:ILE:HG13	1.96	0.48
3:L:130:GLY:HA2	3:L:185:LYS:HB2	1.94	0.48
2:H:18:VAL:HG23	2:H:82(C):LEU:HD11	1.96	0.47
1:G:52:LEU:HD11	1:G:100:MET:HG2	1.95	0.47
3:L:24:ARG:HG2	3:L:70:ASP:OD2	2.15	0.47
1:G:266:ALA:HB3	1:G:289:ASN:HB3	1.96	0.47
1:G:64:GLU:HA	1:G:209:SER:HB3	1.96	0.47
3:L:115:PRO:HD3	3:L:200:HIS:HD2	1.79	0.46
2:H:136:ALA:N	2:H:184:VAL:O	2.49	0.46
1:G:476:LYS:HA	1:G:479:TRP:CD1	2.50	0.46
3:L:78:LEU:HD23	3:L:83:PHE:CE1	2.52	0.45
1:G:104:MET:HB2	1:G:104:MET:HE3	1.87	0.45
2:H:193:THR:HG23	2:H:210:LYS:HE3	1.99	0.45
3:L:157:GLN:HE21	3:L:160:ASN:HD21	1.64	0.45
1:G:119:CYS:N	1:G:434:MET:O	2.47	0.44
2:H:96:ALA:HB2	2:H:101:PRO:HG3	2.00	0.44
2:H:18:VAL:O	2:H:81:ASP:HA	2.18	0.44
1:G:277:LEU:HD13	1:G:352:HIS:HB3	1.99	0.44
2:H:89:VAL:HG12	2:H:108:LEU:HD23	1.99	0.44
1:G:474:ASN:OD1	2:H:100(B):PRO:HG3	2.17	0.43
1:G:54:CYS:O	1:G:75:VAL:HG22	2.18	0.43
1:G:396:ILE:HG22	1:G:396:ILE:O	2.18	0.43
2:H:68:THR:O	2:H:80:LEU:HD12	2.18	0.43
3:L:142:TYR:CG	3:L:143:PRO:HA	2.54	0.43
3:L:110:ARG:HD2	3:L:173:SER:HB2	2.00	0.43
3:L:192:LYS:HD3	3:L:213:ARG:HH12	1.83	0.43
3:L:30:SER:HB2	3:L:50:SER:HA	2.00	0.43
1:G:348:LYS:HD3	1:G:348:LYS:HA	1.90	0.43
2:H:123:PRO:HD3	2:H:209:LYS:HE2	2.00	0.43

Continued on next page...

Continued from previous page...

Atom-1	Atom-2	Interatomic distance (Å)	Clash overlap (Å)
3:L:60:ASP:N	3:L:60:ASP:OD1	2.52	0.43
2:H:27:TYR:CZ	2:H:94:ARG:HD2	2.54	0.42
2:H:38:ARG:HB3	2:H:48:ILE:HD11	2.00	0.42
1:G:49:ASP:OD2	1:G:99:ASN:ND2	2.52	0.42
1:G:475:ILE:O	1:G:478:ASN:HB2	2.19	0.42
1:G:429:GLY:HA3	2:H:53:ARG:HH11	1.84	0.42
2:H:148:GLU:HA	2:H:149:PRO:HA	1.83	0.42
1:G:390:LEU:HA	1:G:390:LEU:HD23	1.89	0.42
3:L:5:THR:HB	3:L:24:ARG:HB2	2.01	0.41
2:H:138:LEU:HD21	2:H:211:VAL:CG1	2.49	0.41
2:H:2:VAL:HB	2:H:102:HIS:CD2	2.55	0.41
3:L:121:PRO:HA	3:L:122:PRO:HD3	1.97	0.41
3:L:115:PRO:HD3	3:L:200:HIS:CD2	2.56	0.41
2:H:152:VAL:HG22	2:H:198:VAL:HG22	2.03	0.41
2:H:97:ASP:CB	2:H:98:CYS:HA	2.23	0.41
1:G:346:THR:O	1:G:350:LYS:HG3	2.20	0.41
1:G:78:ASP:HA	1:G:79:PRO:HD3	1.86	0.41
3:L:34:ALA:HA	3:L:49:TYR:HA	2.03	0.41
1:G:420:ILE:HG21	1:G:438:PRO:HG3	2.03	0.41
2:H:146:PHE:HA	2:H:147:PRO:HA	1.87	0.41
2:H:67:PHE:HE1	2:H:82:VAL:HG22	1.84	0.41
1:G:389:GLN:HG2	4:G:509:NAG:C8	2.52	0.40
1:G:207:LYS:HE2	1:G:436:ALA:HB3	2.04	0.40
3:L:203:LEU:HD13	3:L:207:VAL:HG23	2.04	0.40

There are no symmetry-related clashes.

5.3 Torsion angles [i](#)

5.3.1 Protein backbone [i](#)

In the following table, the Percentiles column shows the percent Ramachandran outliers of the chain as a percentile score with respect to all X-ray entries followed by that with respect to entries of similar resolution.

The Analysed column shows the number of residues for which the backbone conformation was analysed, and the total number of residues.

Mol	Chain	Analysed	Favoured	Allowed	Outliers	Percentiles
1	G	336/353 (95%)	315 (94%)	18 (5%)	3 (1%)	21 65

Continued on next page...

Continued from previous page...

Mol	Chain	Analysed	Favoured	Allowed	Outliers	Percentiles	
2	H	226/228 (99%)	194 (86%)	24 (11%)	8 (4%)	4	35
3	L	206/210 (98%)	189 (92%)	15 (7%)	2 (1%)	19	63
All	All	768/791 (97%)	698 (91%)	57 (7%)	13 (2%)	11	51

All (13) Ramachandran outliers are listed below:

Mol	Chain	Res	Type
3	L	80	SER
1	G	232	ASN
2	H	96	ALA
2	H	100(E)	GLY
2	H	135	THR
1	G	204	ALA
2	H	53	ARG
2	H	129	LYS
2	H	149	PRO
1	G	411	ASN
2	H	14	PRO
2	H	100(B)	PRO
3	L	206	PRO

5.3.2 Protein sidechains ⓘ

In the following table, the Percentiles column shows the percent sidechain outliers of the chain as a percentile score with respect to all X-ray entries followed by that with respect to entries of similar resolution.

The Analysed column shows the number of residues for which the sidechain conformation was analysed, and the total number of residues.

Mol	Chain	Analysed	Rotameric	Outliers	Percentiles	
1	G	305/311 (98%)	301 (99%)	4 (1%)	76	91
2	H	194/194 (100%)	189 (97%)	5 (3%)	54	84
3	L	180/182 (99%)	179 (99%)	1 (1%)	90	96
All	All	679/687 (99%)	669 (98%)	10 (2%)	72	90

All (10) residues with a non-rotameric sidechain are listed below:

Mol	Chain	Res	Type
1	G	65	VAL

Continued on next page...

Continued from previous page...

Mol	Chain	Res	Type
1	G	231	LYS
1	G	410	CYS
1	G	434	MET
2	H	71	ARG
2	H	93	VAL
2	H	98	CYS
2	H	100(C)	CYS
2	H	216	CYS
3	L	216	CYS

Some sidechains can be flipped to improve hydrogen bonding and reduce clashes. All (1) such sidechains are listed below:

Mol	Chain	Res	Type
3	L	157	GLN

5.3.3 RNA [i](#)

There are no RNA molecules in this entry.

5.4 Non-standard residues in protein, DNA, RNA chains [i](#)

There are no non-standard protein/DNA/RNA residues in this entry.

5.5 Carbohydrates [i](#)

There are no carbohydrates in this entry.

5.6 Ligand geometry [i](#)

11 ligands are modelled in this entry.

In the following table, the Counts columns list the number of bonds (or angles) for which Mogul statistics could be retrieved, the number of bonds (or angles) that are observed in the model and the number of bonds (or angles) that are defined in the chemical component dictionary. The Link column lists molecule types, if any, to which the group is linked. The Z score for a bond length (or angle) is the number of standard deviations the observed value is removed from the expected value. A bond length (or angle) with $|Z| > 2$ is considered an outlier worth inspection. RMSZ is the root-mean-square of all Z scores of the bond lengths (or angles).

Mol	Type	Chain	Res	Link	Bond lengths			Bond angles		
					Counts	RMSZ	# Z > 2	Counts	RMSZ	# Z > 2
4	NAG	G	501	1	14,14,15	0.30	0	15,19,21	0.24	0
4	NAG	G	502	1	14,14,15	0.20	0	15,19,21	0.42	0
4	NAG	G	503	1	14,14,15	0.23	0	15,19,21	0.46	0
4	NAG	G	504	1	14,14,15	0.29	0	15,19,21	0.27	0
4	NAG	G	505	1	14,14,15	0.15	0	15,19,21	0.72	1 (6%)
4	NAG	G	506	1	14,14,15	0.17	0	15,19,21	0.29	0
4	NAG	G	507	1	14,14,15	0.23	0	15,19,21	0.24	0
4	NAG	G	508	1	14,14,15	0.27	0	15,19,21	0.49	0
4	NAG	G	509	1	14,14,15	0.20	0	15,19,21	0.40	0
4	NAG	G	510	1	14,14,15	0.15	0	15,19,21	0.56	1 (6%)
5	EPE	G	511	-	14,15,15	0.33	0	18,20,20	2.02	6 (33%)

In the following table, the Chirals column lists the number of chiral outliers, the number of chiral centers analysed, the number of these observed in the model and the number defined in the chemical component dictionary. Similar counts are reported in the Torsion and Rings columns. '-' means no outliers of that kind were identified.

Mol	Type	Chain	Res	Link	Chirals	Torsions	Rings
4	NAG	G	501	1	-	0/6/23/26	0/1/1/1
4	NAG	G	502	1	-	0/6/23/26	0/1/1/1
4	NAG	G	503	1	-	0/6/23/26	0/1/1/1
4	NAG	G	504	1	-	0/6/23/26	0/1/1/1
4	NAG	G	505	1	-	0/6/23/26	0/1/1/1
4	NAG	G	506	1	-	0/6/23/26	0/1/1/1
4	NAG	G	507	1	-	0/6/23/26	0/1/1/1
4	NAG	G	508	1	-	0/6/23/26	0/1/1/1
4	NAG	G	509	1	-	0/6/23/26	0/1/1/1
4	NAG	G	510	1	-	0/6/23/26	0/1/1/1
5	EPE	G	511	-	-	0/9/19/19	0/1/1/1

There are no bond length outliers.

All (8) bond angle outliers are listed below:

Mol	Chain	Res	Type	Atoms	Z	Observed(°)	Ideal(°)
5	G	511	EPE	C5-C6-N1	-2.03	106.99	110.63
4	G	510	NAG	C1-O5-C5	2.01	114.80	112.25
5	G	511	EPE	C7-N4-C5	2.35	117.28	111.27
5	G	511	EPE	C2-C3-N4	2.45	115.01	110.63
4	G	505	NAG	C1-O5-C5	2.62	115.57	112.25
5	G	511	EPE	O2S-S-C10	2.91	109.39	106.91
5	G	511	EPE	O1S-S-C10	3.67	110.04	106.91

Continued on next page...

Continued from previous page...

Mol	Chain	Res	Type	Atoms	Z	Observed(°)	Ideal(°)
5	G	511	EPE	C5-N4-C3	4.98	119.69	108.90

There are no chirality outliers.

There are no torsion outliers.

There are no ring outliers.

3 monomers are involved in 3 short contacts:

Mol	Chain	Res	Type	Clashes	Symm-Clashes
4	G	502	NAG	1	0
4	G	509	NAG	1	0
4	G	510	NAG	1	0

5.7 Other polymers [i](#)

There are no such residues in this entry.

5.8 Polymer linkage issues [i](#)

There are no chain breaks in this entry.

6 Fit of model and data

6.1 Protein, DNA and RNA chains

In the following table, the column labelled ‘#RSRZ> 2’ contains the number (and percentage) of RSRZ outliers, followed by percent RSRZ outliers for the chain as percentile scores relative to all X-ray entries and entries of similar resolution. The OWAB column contains the minimum, median, 95th percentile and maximum values of the occupancy-weighted average B-factor per residue. The column labelled ‘Q< 0.9’ lists the number of (and percentage) of residues with an average occupancy less than 0.9.

Mol	Chain	Analysed	<RSRZ>	#RSRZ>2		OWAB(Å ²)	Q<0.9
1	G	342/353 (96%)	0.66	25 (7%)	18 17	48, 109, 156, 179	0
2	H	228/228 (100%)	0.69	28 (12%)	5 5	42, 96, 160, 204	0
3	L	208/210 (99%)	0.59	21 (10%)	9 9	69, 127, 181, 198	0
All	All	778/791 (98%)	0.65	74 (9%)	10 10	42, 112, 169, 204	0

All (74) RSRZ outliers are listed below:

Mol	Chain	Res	Type	RSRZ
1	G	123	THR	10.4
1	G	124	GLY	9.8
3	L	132	ALA	8.6
1	G	199	SER	8.5
1	G	198	GLY	7.4
1	G	460	ALA	7.3
2	H	132	SER	7.2
1	G	201	ILE	7.1
1	G	202	LYS	6.2
3	L	134	VAL	5.2
1	G	122	LEU	4.6
1	G	200	VAL	4.5
1	G	338	TRP	4.4
2	H	133	GLY	4.3
1	G	204	ALA	4.2
2	H	125	ALA	4.1
3	L	133	SER	4.1
2	H	126	PRO	4.1
2	H	211	VAL	3.9
3	L	131	THR	3.9
2	H	138	LEU	3.7
3	L	195	ALA	3.5
2	H	139	GLY	3.5

Continued on next page...

Continued from previous page...

Mol	Chain	Res	Type	RSRZ
3	L	196	CYS	3.5
1	G	203	GLN	3.4
3	L	151	LYS	3.4
1	G	271	ILE	3.4
3	L	183	LEU	3.4
2	H	141	LEU	3.4
2	H	122	PHE	3.3
1	G	442	LYS	3.3
1	G	121	LYS	3.3
3	L	137	LEU	3.3
3	L	198	VAL	3.2
3	L	135	VAL	3.2
2	H	150	VAL	3.1
2	H	115	SER	3.1
2	H	140	CYS	3.0
2	H	124	LEU	3.0
2	H	183	THR	3.0
2	H	178	LEU	2.9
3	L	156	LEU	2.8
1	G	347	GLU	2.7
3	L	181	LEU	2.7
1	G	353	PHE	2.7
3	L	149	GLN	2.7
3	L	197	GLU	2.6
3	L	150	TRP	2.6
2	H	198	VAL	2.6
2	H	131	THR	2.5
2	H	123	PRO	2.5
3	L	188	TYR	2.5
1	G	333	ILE	2.5
3	L	194	TYR	2.4
3	L	136	CYS	2.4
2	H	194	TYR	2.4
2	H	97	ASP	2.3
1	G	349	LEU	2.3
2	H	120	SER	2.3
1	G	288	LEU	2.3
1	G	462	ASN	2.3
3	L	126	GLN	2.3
2	H	142	VAL	2.3
3	L	124	ASP	2.2
2	H	143	LYS	2.2

Continued on next page...

Continued from previous page...

Mol	Chain	Res	Type	RSRZ
1	G	461	ASN	2.2
2	H	169	VAL	2.2
2	H	181	VAL	2.1
1	G	61	HIS	2.1
2	H	130	SER	2.1
2	H	207	VAL	2.0
1	G	359	ILE	2.0
2	H	189	LEU	2.0
1	G	232	ASN	2.0

6.2 Non-standard residues in protein, DNA, RNA chains [i](#)

There are no non-standard protein/DNA/RNA residues in this entry.

6.3 Carbohydrates [i](#)

There are no carbohydrates in this entry.

6.4 Ligands [i](#)

In the following table, the Atoms column lists the number of modelled atoms in the group and the number defined in the chemical component dictionary. LLDF column lists the quality of electron density of the group with respect to its neighbouring residues in protein, DNA or RNA chains. The B-factors column lists the minimum, median, 95th percentile and maximum values of B factors of atoms in the group. The column labelled 'Q < 0.9' lists the number of atoms with occupancy less than 0.9.

Mol	Type	Chain	Res	Atoms	RSCC	RSR	LLDF	B-factors(Å ²)	Q<0.9
4	NAG	G	510	14/15	0.68	0.39	2.71	119,132,149,152	0
4	NAG	G	507	14/15	0.80	0.32	1.36	143,154,161,163	0
4	NAG	G	509	14/15	0.71	0.32	0.98	164,167,170,170	0
5	EPE	G	511	15/15	0.89	0.31	0.67	67,79,88,94	0
4	NAG	G	505	14/15	0.84	0.35	0.59	114,127,138,145	0
4	NAG	G	503	14/15	0.90	0.25	-0.05	98,117,125,127	0
4	NAG	G	506	14/15	0.78	0.24	-0.42	125,149,158,159	0
4	NAG	G	501	14/15	0.85	0.21	-0.87	91,101,115,118	0
4	NAG	G	504	14/15	0.71	0.28	-	115,122,130,130	0
4	NAG	G	508	14/15	0.92	0.25	-	80,94,105,106	0
4	NAG	G	502	14/15	0.76	0.39	-	138,149,176,180	0

6.5 Other polymers [i](#)

There are no such residues in this entry.