



Full wwPDB X-ray Structure Validation Report ⓘ

Feb 1, 2016 – 12:47 PM GMT

PDB ID : 3S4A
Title : Cellobiose phosphorylase from Cellulomonas uda in complex with cellobiose
Authors : Van Hoorebeke, A.; Stout, J.; Soetaert, W.; Van Beeumen, J.; Desmet, T.; Savvides, S.
Deposited on : 2011-05-19
Resolution : 1.99 Å(reported)

This is a Full wwPDB X-ray Structure Validation Report for a publicly released PDB entry.
We welcome your comments at validation@mail.wwpdb.org
A user guide is available at
<http://wwpdb.org/validation/2016/XrayValidationReportHelp>
with specific help available everywhere you see the ⓘ symbol.

The following versions of software and data (see [references ⓘ](#)) were used in the production of this report:

MolProbity : 4.02b-467
Mogul : 1.7 (RC4), CSD as536be (2015)
Xtriage (Phenix) : 1.9-1692
EDS : rb-20026688
Percentile statistics : 20151230.v01 (using entries in the PDB archive December 30th 2015)
Refmac : 5.8.0135
CCP4 : 6.5.0
Ideal geometry (proteins) : Engh & Huber (2001)
Ideal geometry (DNA, RNA) : Parkinson et al. (1996)
Validation Pipeline (wwPDB-VP) : trunk26865

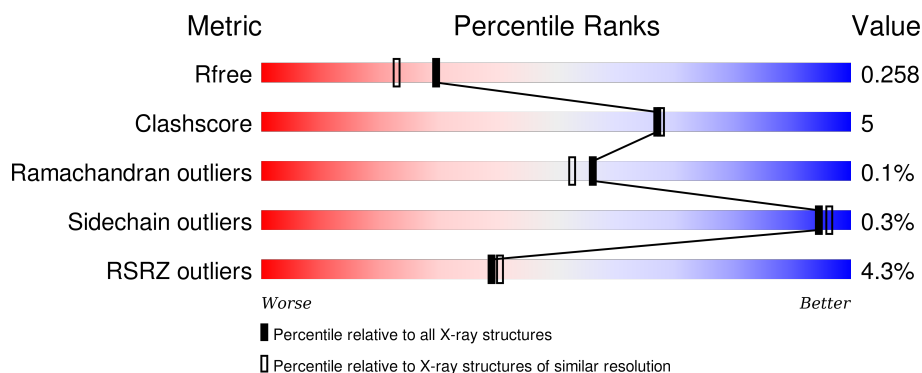
1 Overall quality at a glance

The following experimental techniques were used to determine the structure:

X-RAY DIFFRACTION

The reported resolution of this entry is 1.99 Å.

Percentile scores (ranging between 0-100) for global validation metrics of the entry are shown in the following graphic. The table shows the number of entries on which the scores are based.



Metric	Whole archive (#Entries)	Similar resolution (#Entries, resolution range(Å))
R_{free}	91344	6249 (2.00-2.00)
Clashscore	102246	7340 (2.00-2.00)
Ramachandran outliers	100387	7248 (2.00-2.00)
Sidechain outliers	100360	7247 (2.00-2.00)
RSRZ outliers	91569	6262 (2.00-2.00)

The table below summarises the geometric issues observed across the polymeric chains and their fit to the electron density. The red, orange, yellow and green segments on the lower bar indicate the fraction of residues that contain outliers for ≥ 3 , 2, 1 and 0 types of geometric quality criteria. A grey segment represents the fraction of residues that are not modelled. The numeric value for each fraction is indicated below the corresponding segment, with a dot representing fractions $\leq 5\%$. The upper red bar (where present) indicates the fraction of residues that have poor fit to the electron density. The numeric value is given above the bar.

Mol	Chain	Length	Quality of chain
1	A	822	<div> <div>6%</div> <div>89%</div> <div>11%</div> </div>
1	B	822	<div> <div>3%</div> <div>89%</div> <div>11%</div> </div>

2 Entry composition [i](#)

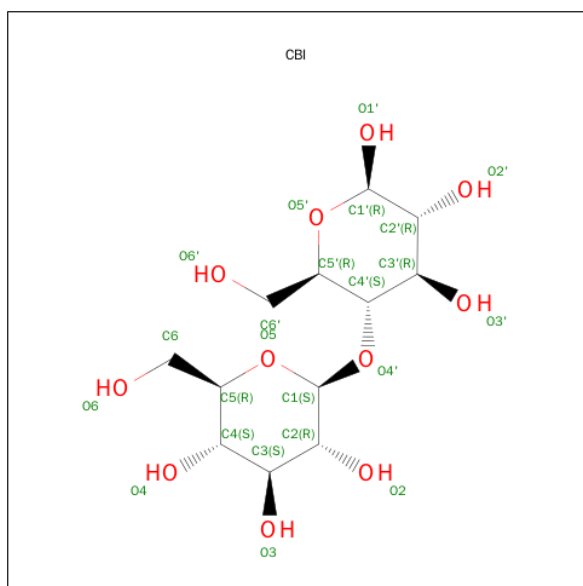
There are 3 unique types of molecules in this entry. The entry contains 26625 atoms, of which 12150 are hydrogens and 0 are deuteriums.

In the tables below, the ZeroOcc column contains the number of atoms modelled with zero occupancy, the AltConf column contains the number of residues with at least one atom in alternate conformation and the Trace column contains the number of residues modelled with at most 2 atoms.

- Molecule 1 is a protein called Cellobiose phosphorylase.

Mol	Chain	Residues	Atoms						ZeroOcc	AltConf	Trace
1	A	822	Total	C	H	N	O	S	0	3	0
			12471	4072	6026	1111	1245	17			
1	B	822	Total	C	H	N	O	S	9	5	0
			12559	4091	6082	1112	1257	17			

- Molecule 2 is SUGAR (CELLOBIOSE) (three-letter code: CBI) (formula: $C_{12}H_{22}O_{11}$).



Mol	Chain	Residues	Atoms				ZeroOcc	AltConf
2	A	1	Total	C	H	O	0	0
			44	12	21	11		
2	B	1	Total	C	H	O	0	0
			44	12	21	11		

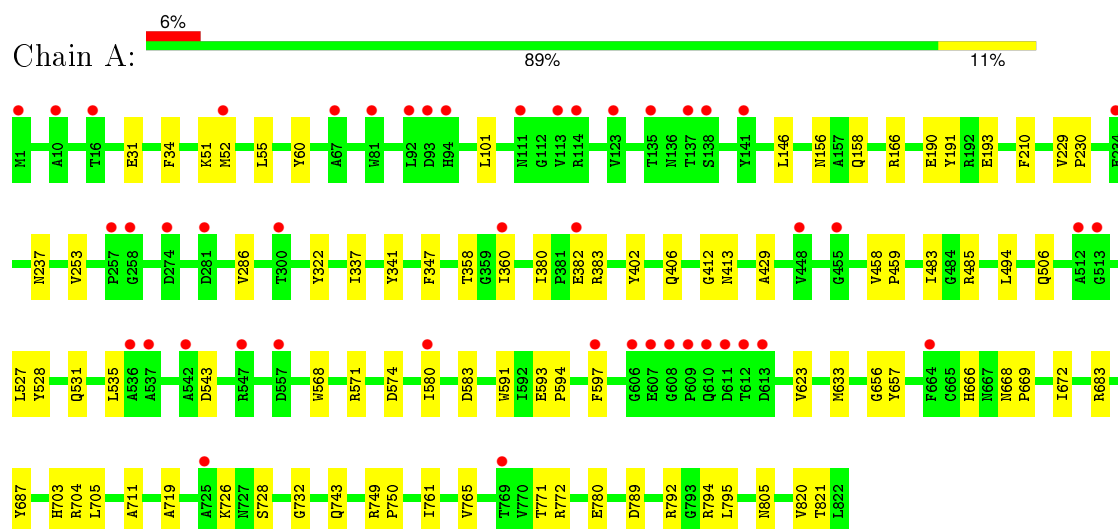
- Molecule 3 is water.

Mol	Chain	Residues	Atoms		ZeroOcc	AltConf
3	A	745	Total 745	O 745	0	0
3	B	762	Total 762	O 762	0	0

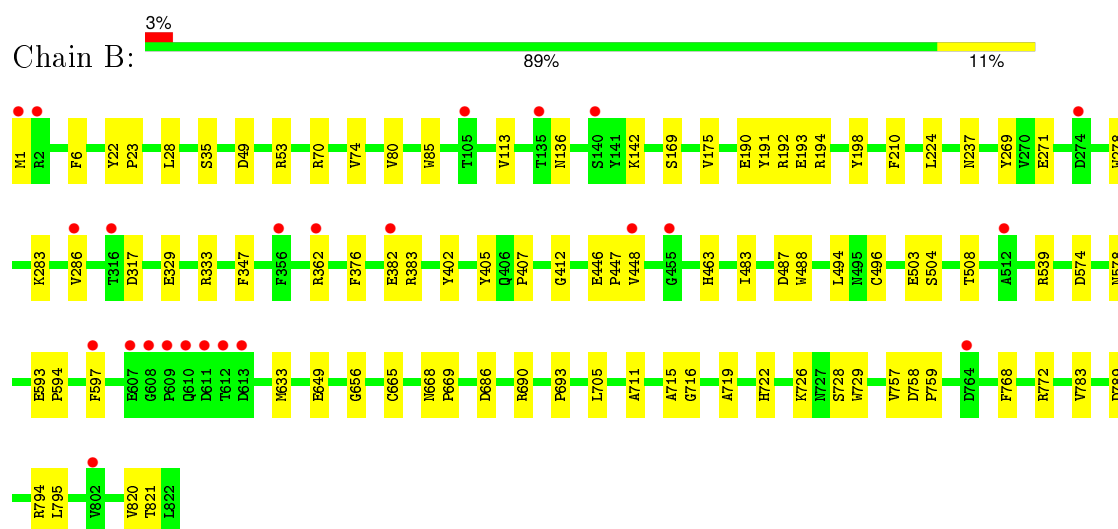
3 Residue-property plots [i](#)

These plots are drawn for all protein, RNA and DNA chains in the entry. The first graphic for a chain summarises the proportions of errors displayed in the second graphic. The second graphic shows the sequence view annotated by issues in geometry and electron density. Residues are color-coded according to the number of geometric quality criteria for which they contain at least one outlier: green = 0, yellow = 1, orange = 2 and red = 3 or more. A red dot above a residue indicates a poor fit to the electron density ($RSRZ > 2$). Stretches of 2 or more consecutive residues without any outlier are shown as a green connector. Residues present in the sample, but not in the model, are shown in grey.

- Molecule 1: Cellobiose phosphorylase



- Molecule 1: Cellobiose phosphorylase



4 Data and refinement statistics

Property	Value	Source
Space group	P 21 21 21	Depositor
Cell constants a, b, c, α , β , γ	85.69 Å 195.56 Å 103.64 Å 90.00° 90.00° 90.00°	Depositor
Resolution (Å)	45.79 – 1.99 45.79 – 1.99	Depositor EDS
% Data completeness (in resolution range)	88.2 (45.79-1.99) 98.8 (45.79-1.99)	Depositor EDS
R_{merge}	(Not available)	Depositor
R_{sym}	(Not available)	Depositor
$\langle I/\sigma(I) \rangle$ ¹	1.64 (at 1.98 Å)	Xtriage
Refinement program	PHENIX (phenix.refine: 1.6.4_486)	Depositor
R, R_{free}	0.200 , 0.255 0.210 , 0.258	Depositor DCC
R_{free} test set	5952 reflections (5.28%)	DCC
Wilson B-factor (Å ²)	10.0	Xtriage
Anisotropy	0.596	Xtriage
Bulk solvent k_{sol} (e/Å ³), B_{sol} (Å ²)	0.42 , 57.4	EDS
Estimated twinning fraction	No twinning to report.	Xtriage
L-test for twinning ²	$\langle L \rangle = 0.57$, $\langle L^2 \rangle = 0.42$	Xtriage
Outliers	7 of 118758 reflections (0.006%)	Xtriage
F_o, F_c correlation	0.94	EDS
Total number of atoms	26625	wwPDB-VP
Average B, all atoms (Å ²)	14.0	wwPDB-VP

Xtriage's analysis on translational NCS is as follows: *The analyses of the Patterson function reveals a significant off-origin peak that is 61.30 % of the origin peak, indicating pseudo translational symmetry. The chance of finding a peak of this or larger height randomly in a structure without pseudo translational symmetry is equal to 1.3373e-05. The detected translational NCS is most likely also responsible for the elevated intensity ratio.*

¹ Intensities estimated from amplitudes.

² Theoretical values of $\langle |L| \rangle$, $\langle L^2 \rangle$ for acentric reflections are 0.5, 0.375 respectively for untwinned datasets, and 0.333, 0.2 for perfectly twinned datasets.

5 Model quality [i](#)

5.1 Standard geometry [i](#)

Bond lengths and bond angles in the following residue types are not validated in this section: CBI

The Z score for a bond length (or angle) is the number of standard deviations the observed value is removed from the expected value. A bond length (or angle) with $|Z| > 5$ is considered an outlier worth inspection. RMSZ is the root-mean-square of all Z scores of the bond lengths (or angles).

Mol	Chain	Bond lengths		Bond angles	
		RMSZ	$\# Z > 5$	RMSZ	$\# Z > 5$
1	A	0.80	1/6622 (0.0%)	0.70	3/9029 (0.0%)
1	B	0.80	0/6657	0.71	1/9075 (0.0%)
All	All	0.80	1/13279 (0.0%)	0.70	4/18104 (0.0%)

All (1) bond length outliers are listed below:

Mol	Chain	Res	Type	Atoms	Z	Observed(Å)	Ideal(Å)
1	A	623	VAL	CB-CG2	5.18	1.63	1.52

All (4) bond angle outliers are listed below:

Mol	Chain	Res	Type	Atoms	Z	Observed(°)	Ideal(°)
1	B	789	ASP	CB-CG-OD1	8.56	126.01	118.30
1	A	789	ASP	CB-CG-OD1	5.31	123.08	118.30
1	A	792	ARG	NE-CZ-NH1	5.25	122.92	120.30
1	A	792	ARG	NE-CZ-NH2	-5.16	117.72	120.30

There are no chirality outliers.

There are no planarity outliers.

5.2 Too-close contacts [i](#)

In the following table, the Non-H and H(model) columns list the number of non-hydrogen atoms and hydrogen atoms in the chain respectively. The H(added) column lists the number of hydrogen atoms added and optimized by MolProbity. The Clashes column lists the number of clashes within the asymmetric unit, whereas Symm-Clashes lists symmetry related clashes.

Mol	Chain	Non-H	H(model)	H(added)	Clashes	Symm-Clashes
1	A	6445	6026	6050	56	0

Continued on next page...

Continued from previous page...

Mol	Chain	Non-H	H(model)	H(added)	Clashes	Symm-Clashes
1	B	6477	6082	6087	67	0
2	A	23	21	22	0	0
2	B	23	21	22	0	0
3	A	745	0	0	3	0
3	B	762	0	0	6	0
All	All	14475	12150	12181	121	0

The all-atom clashscore is defined as the number of clashes found per 1000 atoms (including hydrogen atoms). The all-atom clashscore for this structure is 5.

All (121) close contacts within the same asymmetric unit are listed below, sorted by their clash magnitude.

Atom-1	Atom-2	Interatomic distance (Å)	Clash overlap (Å)
1:B:504:SER:O	1:B:508[B]:THR:HG22	1.80	0.82
1:A:51:LYS:HG2	1:A:52:MET:HG2	1.63	0.80
1:A:51:LYS:HE3	1:A:158:GLN:OE1	1.88	0.73
1:B:633:MET:H	1:B:668:ASN:HD21	1.37	0.70
1:B:503:GLU:HB3	1:B:508[A]:THR:HG21	1.74	0.69
1:A:31:GLU:O	1:A:34:PHE:CZ	2.46	0.69
1:B:715:ALA:O	1:B:722:HIS:HD2	1.76	0.68
1:B:198:TYR:CE2	1:B:286[B]:VAL:HG11	2.30	0.66
1:A:51:LYS:HD2	1:A:360:ILE:O	1.98	0.64
1:A:633:MET:H	1:A:668:ASN:HD21	1.47	0.63
1:B:28:LEU:HB2	1:B:35:SER:HB2	1.79	0.63
1:B:794:ARG:NH1	3:B:1217:HOH:O	2.33	0.62
1:A:347:PHE:HE2	1:A:383:ARG:NH2	1.97	0.62
1:B:198:TYR:CE2	1:B:286[B]:VAL:CG1	2.82	0.62
1:B:22:TYR:CG	1:B:23:PRO:HD2	2.34	0.61
1:A:322:TYR:CD2	1:A:772:ARG:HD3	2.35	0.61
1:A:668:ASN:N	1:A:669:PRO:CD	2.66	0.58
1:A:795:LEU:HD22	1:A:820:VAL:HG22	1.86	0.55
1:B:496:CYS:SG	1:B:508[B]:THR:HG23	2.45	0.55
3:A:981:HOH:O	1:B:192:ARG:HD3	2.04	0.55
1:B:191:TYR:CE2	1:B:286[B]:VAL:HG22	2.42	0.55
1:A:406:GLN:HE21	1:A:413:ASN:HB2	1.71	0.55
1:B:278:TRP:CD1	1:B:283:LYS:HG2	2.41	0.55
1:B:22:TYR:CD2	1:B:23:PRO:HD2	2.42	0.55
1:B:402:TYR:CG	1:B:412:GLY:HA3	2.41	0.54
1:A:795:LEU:HD23	1:A:820:VAL:HG13	1.88	0.54
1:A:429:ALA:HB2	1:A:528:TYR:CZ	2.44	0.52
1:B:539:ARG:HA	3:B:1497:HOH:O	2.08	0.52

Continued on next page...

Continued from previous page...

Atom-1	Atom-2	Interatomic distance (Å)	Clash overlap (Å)
1:B:317:ASP:HB2	3:B:972:HOH:O	2.10	0.52
1:B:633:MET:H	1:B:668:ASN:ND2	2.08	0.51
1:A:190:GLU:HG2	1:A:193:GLU:CD	2.31	0.51
1:B:329:GLU:HG3	3:B:1329:HOH:O	2.09	0.51
1:A:402:TYR:CG	1:A:412:GLY:HA3	2.46	0.51
1:B:794:ARG:HH21	1:B:821:THR:HG22	1.75	0.51
1:A:743:GLN:HB3	1:A:749:ARG:HB3	1.93	0.51
1:A:485:ARG:HD3	1:A:506:GLN:O	2.11	0.51
1:A:571:ARG:HG2	1:A:591:TRP:CD2	2.47	0.50
1:A:593:GLU:N	1:A:594:PRO:CD	2.75	0.50
1:B:768:PHE:CE1	1:B:783:VAL:HG21	2.47	0.50
1:B:382:GLU:HG2	1:B:383:ARG:N	2.26	0.50
1:B:716:GLY:C	1:B:722:HIS:CD2	2.85	0.49
1:B:705:LEU:HD11	1:B:726:LYS:HA	1.95	0.48
1:A:666:HIS:HB2	3:A:924:HOH:O	2.13	0.48
1:A:771:THR:HG23	1:A:780:GLU:OE2	2.13	0.48
1:B:504:SER:O	1:B:508[A]:THR:HG23	2.13	0.48
1:A:52:MET:HA	1:A:156:ASN:HA	1.95	0.48
1:A:657:TYR:HB3	1:B:169:SER:HB3	1.96	0.48
1:A:101:LEU:HD22	1:A:341:TYR:CG	2.48	0.48
1:A:683:ARG:HD2	1:A:687:TYR:CZ	2.49	0.47
1:B:668:ASN:N	1:B:669:PRO:CD	2.77	0.47
1:B:716:GLY:O	1:B:722:HIS:HB2	2.14	0.47
1:B:1:MET:CE	3:B:1282:HOH:O	2.62	0.47
1:B:136:ASN:ND2	1:B:142:LYS:HG2	2.30	0.47
1:B:686:ASP:O	1:B:690:ARG:HG3	2.15	0.47
1:A:101:LEU:HD23	1:A:341:TYR:CD2	2.50	0.47
1:B:504:SER:O	1:B:508[B]:THR:CG2	2.59	0.46
1:B:53:ARG:HA	1:B:53:ARG:HD3	1.70	0.46
1:B:191:TYR:CD2	1:B:286[B]:VAL:HG22	2.51	0.46
1:B:405:TYR:O	1:B:407:PRO:HD3	2.16	0.46
1:A:210:PHE:O	1:A:237:ASN:HA	2.16	0.46
1:B:758:ASP:N	1:B:759:PRO:HD3	2.31	0.46
1:B:693:PRO:HA	3:B:1357:HOH:O	2.16	0.45
1:A:711:ALA:HA	1:A:728:SER:HA	1.98	0.45
1:B:483:ILE:HG21	1:B:494:LEU:HD12	1.99	0.45
1:A:703:HIS:O	1:A:704:ARG:HB2	2.16	0.45
1:B:795:LEU:HD22	1:B:820:VAL:HG22	1.99	0.44
1:B:656:GLY:HA3	1:B:719:ALA:HB2	1.99	0.44
1:A:483:ILE:HG21	1:A:494:LEU:HD12	1.98	0.44
1:B:210:PHE:O	1:B:237:ASN:HA	2.17	0.44

Continued on next page...

Continued from previous page...

Atom-1	Atom-2	Interatomic distance (Å)	Clash overlap (Å)
1:B:74:VAL:O	1:B:80:VAL:HA	2.17	0.44
1:B:224:LEU:HD23	1:B:224:LEU:HA	1.77	0.44
1:B:715:ALA:O	1:B:722:HIS:CD2	2.63	0.44
1:A:527:LEU:O	1:A:531:GLN:HG3	2.17	0.44
1:B:448:VAL:HG12	1:B:463:HIS:CE1	2.53	0.44
1:A:761:ILE:HG21	1:A:765:VAL:HB	1.99	0.44
1:B:22:TYR:CG	1:B:23:PRO:CD	3.01	0.43
1:A:705:LEU:HD11	1:A:726:LYS:HA	1.99	0.43
1:B:269:TYR:CE2	1:B:271:GLU:HG3	2.54	0.43
1:A:568:TRP:CZ2	1:A:583:ASP:HB2	2.53	0.43
1:A:191:TYR:CD2	1:A:286:VAL:HG12	2.54	0.43
1:B:728:SER:O	1:B:729:TRP:HB2	2.18	0.43
1:B:487:ASP:O	1:B:488:TRP:C	2.56	0.42
1:A:347:PHE:HE2	1:A:383:ARG:CZ	2.31	0.42
1:B:113:VAL:HG23	1:B:142:LYS:HE3	2.00	0.42
1:A:656:GLY:HA3	1:A:719:ALA:HB2	2.01	0.42
1:B:347:PHE:HB2	1:B:376:PHE:CD2	2.54	0.42
1:B:496:CYS:SG	1:B:508[B]:THR:CG2	3.08	0.42
1:A:794:ARG:NH2	1:A:821:THR:HG22	2.35	0.42
1:A:166:ARG:HD2	1:B:649:GLU:OE2	2.19	0.42
1:B:593:GLU:HB2	1:B:594:PRO:HD3	2.01	0.42
1:A:146:LEU:HD12	1:A:253:VAL:HG21	2.02	0.42
1:B:190:GLU:O	1:B:193:GLU:HG3	2.19	0.42
1:B:70:ARG:HD2	1:B:70:ARG:N	2.34	0.42
1:A:60:TYR:CZ	1:A:358:THR:HA	2.55	0.42
1:A:337:ILE:HG13	3:A:1260:HOH:O	2.20	0.42
1:A:458:VAL:HB	1:A:459:PRO:HD2	2.02	0.42
1:B:711:ALA:HA	1:B:728:SER:HA	2.02	0.41
1:A:749:ARG:HA	1:A:750:PRO:HD3	1.73	0.41
1:B:113:VAL:CG2	1:B:142:LYS:HE3	2.50	0.41
1:A:229:VAL:HB	1:A:230:PRO:HD3	2.03	0.41
1:A:55:LEU:HD12	1:A:55:LEU:N	2.35	0.41
1:A:52:MET:SD	1:A:156:ASN:ND2	2.94	0.41
1:A:666:HIS:CE1	1:A:732:GLY:HA3	2.56	0.41
1:A:535:LEU:HA	1:A:535:LEU:HD23	1.93	0.41
1:A:429:ALA:HB2	1:A:528:TYR:CE2	2.55	0.41
1:B:49:ASP:OD1	1:B:362:ARG:HD3	2.21	0.41
1:B:665:CYS:O	1:B:669:PRO:HD3	2.21	0.41
1:B:446:GLU:HA	1:B:447:PRO:HD3	1.95	0.41
1:A:795:LEU:HD11	1:A:805:ASN:HA	2.03	0.41
1:A:101:LEU:CD2	1:A:341:TYR:CG	3.04	0.41

Continued on next page...

Continued from previous page...

Atom-1	Atom-2	Interatomic distance (Å)	Clash overlap (Å)
1:B:757:VAL:HG11	1:B:820:VAL:HG21	2.02	0.41
1:A:380:ILE:HB	1:A:383:ARG:HD3	2.03	0.41
1:A:382:GLU:HG2	1:A:383:ARG:N	2.36	0.41
1:A:574:ASP:HB3	1:A:580[A]:ILE:HD11	2.03	0.40
1:A:672:ILE:HG12	1:A:687:TYR:HB2	2.03	0.40
1:B:175:VAL:HG21	1:B:210:PHE:CE2	2.56	0.40
1:B:193:GLU:CG	1:B:194:ARG:H	2.34	0.40
1:B:574:ASP:OD2	1:B:578:ASN:HB2	2.21	0.40
1:A:322:TYR:HD2	1:A:772:ARG:HD3	1.86	0.40
1:B:593:GLU:N	1:B:594:PRO:CD	2.84	0.40
1:B:6:PHE:CD1	1:B:333:ARG:HD3	2.56	0.40

There are no symmetry-related clashes.

5.3 Torsion angles [i](#)

5.3.1 Protein backbone [i](#)

In the following table, the Percentiles column shows the percent Ramachandran outliers of the chain as a percentile score with respect to all X-ray entries followed by that with respect to entries of similar resolution.

The Analysed column shows the number of residues for which the backbone conformation was analysed, and the total number of residues.

Mol	Chain	Analysed	Favoured	Allowed	Outliers	Percentiles	
1	A	823/822 (100%)	786 (96%)	37 (4%)	0	100	100
1	B	825/822 (100%)	786 (95%)	38 (5%)	1 (0%)	56	53
All	All	1648/1644 (100%)	1572 (95%)	75 (5%)	1 (0%)	56	53

All (1) Ramachandran outliers are listed below:

Mol	Chain	Res	Type
1	B	85	TRP

5.3.2 Protein sidechains [i](#)

In the following table, the Percentiles column shows the percent sidechain outliers of the chain as a percentile score with respect to all X-ray entries followed by that with respect to entries of similar resolution.

The Analysed column shows the number of residues for which the sidechain conformation was analysed, and the total number of residues.

Mol	Chain	Analysed	Rotameric	Outliers	Percentiles	
1	A	667/675 (99%)	665 (100%)	2 (0%)	94	96
1	B	674/675 (100%)	672 (100%)	2 (0%)	94	96
All	All	1341/1350 (99%)	1337 (100%)	4 (0%)	94	96

All (4) residues with a non-rotameric sidechain are listed below:

Mol	Chain	Res	Type
1	A	543	ASP
1	A	597	PHE
1	B	597	PHE
1	B	772	ARG

Some sidechains can be flipped to improve hydrogen bonding and reduce clashes. All (5) such sidechains are listed below:

Mol	Chain	Res	Type
1	A	406	GLN
1	A	668	ASN
1	B	668	ASN
1	B	722	HIS
1	B	760	GLN

5.3.3 RNA [i](#)

There are no RNA molecules in this entry.

5.4 Non-standard residues in protein, DNA, RNA chains [i](#)

There are no non-standard protein/DNA/RNA residues in this entry.

5.5 Carbohydrates [i](#)

There are no carbohydrates in this entry.

5.6 Ligand geometry [i](#)

2 ligands are modelled in this entry.

In the following table, the Counts columns list the number of bonds (or angles) for which Mogul statistics could be retrieved, the number of bonds (or angles) that are observed in the model and the number of bonds (or angles) that are defined in the chemical component dictionary. The Link column lists molecule types, if any, to which the group is linked. The Z score for a bond length (or angle) is the number of standard deviations the observed value is removed from the expected value. A bond length (or angle) with $|Z| > 2$ is considered an outlier worth inspection. RMSZ is the root-mean-square of all Z scores of the bond lengths (or angles).

Mol	Type	Chain	Res	Link	Bond lengths			Bond angles		
					Counts	RMSZ	# $ Z > 2$	Counts	RMSZ	# $ Z > 2$
2	CBI	A	823	-	24,24,24	1.07	2 (8%)	35,35,35	1.34	5 (14%)
2	CBI	B	823	-	24,24,24	1.00	2 (8%)	35,35,35	1.38	6 (17%)

In the following table, the Chirals column lists the number of chiral outliers, the number of chiral centers analysed, the number of these observed in the model and the number defined in the chemical component dictionary. Similar counts are reported in the Torsion and Rings columns. '-' means no outliers of that kind were identified.

Mol	Type	Chain	Res	Link	Chirals	Torsions	Rings
2	CBI	A	823	-	-	0/8/48/48	0/2/2/2
2	CBI	B	823	-	-	0/8/48/48	0/2/2/2

All (4) bond length outliers are listed below:

Mol	Chain	Res	Type	Atoms	Z	Observed(Å)	Ideal(Å)
2	A	823	CBI	O5'-C1'	-2.84	1.37	1.43
2	A	823	CBI	O5'-C5'	-2.22	1.38	1.44
2	B	823	CBI	O5'-C1'	-2.20	1.38	1.43
2	B	823	CBI	O5-C5	-2.06	1.39	1.44

All (11) bond angle outliers are listed below:

Mol	Chain	Res	Type	Atoms	Z	Observed(°)	Ideal(°)
2	A	823	CBI	O5'-C1'-C2'	-2.84	105.26	109.80
2	B	823	CBI	C3-C4-C5	-2.18	106.39	110.20
2	B	823	CBI	O5'-C5'-C4'	2.05	114.08	109.75
2	B	823	CBI	O5-C5-C4	2.09	113.60	109.68
2	A	823	CBI	C1-C2-C3	2.26	114.43	109.97
2	B	823	CBI	C1-C2-C3	2.29	114.50	109.97
2	B	823	CBI	O4'-C4'-C3'	2.40	113.37	107.17
2	A	823	CBI	C1'-C2'-C3'	2.48	114.11	110.43
2	A	823	CBI	O4-C4-C5	2.74	116.49	109.24
2	A	823	CBI	O4'-C4'-C3'	2.83	114.47	107.17
2	B	823	CBI	O4-C4-C5	3.88	119.51	109.24

There are no chirality outliers.

There are no torsion outliers.

There are no ring outliers.

No monomer is involved in short contacts.

5.7 Other polymers

There are no such residues in this entry.

5.8 Polymer linkage issues

There are no chain breaks in this entry.

6 Fit of model and data ⓘ

6.1 Protein, DNA and RNA chains ⓘ

In the following table, the column labelled ‘#RSRZ> 2’ contains the number (and percentage) of RSRZ outliers, followed by percent RSRZ outliers for the chain as percentile scores relative to all X-ray entries and entries of similar resolution. The OWAB column contains the minimum, median, 95th percentile and maximum values of the occupancy-weighted average B-factor per residue. The column labelled ‘Q< 0.9’ lists the number of (and percentage) of residues with an average occupancy less than 0.9.

Mol	Chain	Analysed	<RSRZ>	#RSRZ>2			OWAB(Å ²)	Q<0.9
1	A	822/822 (100%)	0.50	47 (5%)	27	29	3, 10, 30, 180	0
1	B	822/822 (100%)	0.40	24 (2%)	55	56	4, 9, 30, 140	1 (0%)
All	All	1644/1644 (100%)	0.45	71 (4%)	39	40	3, 10, 30, 180	1 (0%)

All (71) RSRZ outliers are listed below:

Mol	Chain	Res	Type	RSRZ
1	A	512	ALA	6.1
1	B	612	THR	4.7
1	B	512	ALA	4.4
1	A	612	THR	4.1
1	A	258	GLY	3.6
1	A	52	MET	3.5
1	B	610	GLN	3.5
1	B	613	ASP	3.4
1	A	93	ASP	3.4
1	B	274	ASP	3.4
1	A	547	ARG	3.3
1	A	257	PRO	3.2
1	A	448	VAL	3.2
1	B	382	GLU	3.1
1	A	611	ASP	3.1
1	A	613	ASP	3.0
1	B	140	SER	3.0
1	B	1	MET	3.0
1	A	10	ALA	2.9
1	A	513	GLY	2.9
1	A	274	ASP	2.9
1	A	537	ALA	2.9
1	A	382	GLU	2.8
1	B	802	VAL	2.8

Continued on next page...

Continued from previous page...

Mol	Chain	Res	Type	RSRZ
1	A	597	PHE	2.7
1	A	608	GLY	2.5
1	B	608	GLY	2.5
1	A	141	TYR	2.5
1	A	664	PHE	2.4
1	A	610	GLN	2.4
1	B	597	PHE	2.4
1	B	611	ASP	2.4
1	B	286[A]	VAL	2.4
1	A	542	ALA	2.4
1	A	1	MET	2.4
1	B	764	ASP	2.3
1	A	138	SER	2.3
1	A	135	THR	2.3
1	A	92	LEU	2.3
1	A	137	THR	2.3
1	A	16	THR	2.2
1	B	362	ARG	2.2
1	A	557[A]	ASP	2.2
1	A	455	GLY	2.2
1	A	536	ALA	2.2
1	A	580[A]	ILE	2.2
1	B	607	GLU	2.2
1	B	135	THR	2.2
1	A	67	ALA	2.2
1	A	606	GLY	2.2
1	A	360	ILE	2.2
1	B	316	THR	2.2
1	B	356	PHE	2.1
1	A	300	THR	2.1
1	A	81	TRP	2.1
1	B	2	ARG	2.1
1	A	113	VAL	2.1
1	B	448	VAL	2.1
1	A	281	ASP	2.1
1	A	234	GLU	2.1
1	A	123	VAL	2.1
1	A	114	ARG	2.1
1	B	455	GLY	2.1
1	A	609	PRO	2.1
1	B	609	PRO	2.1
1	A	111	ASN	2.1

Continued on next page...

Continued from previous page...

Mol	Chain	Res	Type	RSRZ
1	B	105	THR	2.1
1	A	769	THR	2.0
1	A	607	GLU	2.0
1	A	725	ALA	2.0
1	A	94	HIS	2.0

6.2 Non-standard residues in protein, DNA, RNA chains [i](#)

There are no non-standard protein/DNA/RNA residues in this entry.

6.3 Carbohydrates [i](#)

There are no carbohydrates in this entry.

6.4 Ligands [i](#)

In the following table, the Atoms column lists the number of modelled atoms in the group and the number defined in the chemical component dictionary. LLDF column lists the quality of electron density of the group with respect to its neighbouring residues in protein, DNA or RNA chains. The B-factors column lists the minimum, median, 95th percentile and maximum values of B factors of atoms in the group. The column labelled 'Q < 0.9' lists the number of atoms with occupancy less than 0.9.

Mol	Type	Chain	Res	Atoms	RSCC	RSR	LLDF	B-factors(Å ²)	Q<0.9
2	CBI	B	823	23/23	0.92	0.14	0.37	5,12,19,26	0
2	CBI	A	823	23/23	0.92	0.14	0.35	5,16,23,26	0

6.5 Other polymers [i](#)

There are no such residues in this entry.