



Full wwPDB X-ray Structure Validation Report ⓘ

Feb 1, 2016 – 12:54 PM GMT

PDB ID : 3S7P
Title : Crystal Structure of the Infrared Fluorescent D207H variant of Deinococcus Bacteriophytochrome chromophore binding domain at 1.72 angstrom resolution
Authors : Forest, K.T.; Auldridge, M.E.; Satyshur, K.A.
Deposited on : 2011-05-26
Resolution : 1.72 Å(reported)

This is a Full wwPDB X-ray Structure Validation Report for a publicly released PDB entry.
We welcome your comments at validation@mail.wwpdb.org
A user guide is available at
<http://wwpdb.org/validation/2016/XrayValidationReportHelp>
with specific help available everywhere you see the ⓘ symbol.

The following versions of software and data (see [references ⓘ](#)) were used in the production of this report:

MolProbity : 4.02b-467
Mogul : 1.7 (RC4), CSD as536be (2015)
Xtriage (Phenix) : 1.9-1692
EDS : rb-20026688
Percentile statistics : 20151230.v01 (using entries in the PDB archive December 30th 2015)
Refmac : 5.8.0135
CCP4 : 6.5.0
Ideal geometry (proteins) : Engh & Huber (2001)
Ideal geometry (DNA, RNA) : Parkinson et al. (1996)
Validation Pipeline (wwPDB-VP) : trunk26865

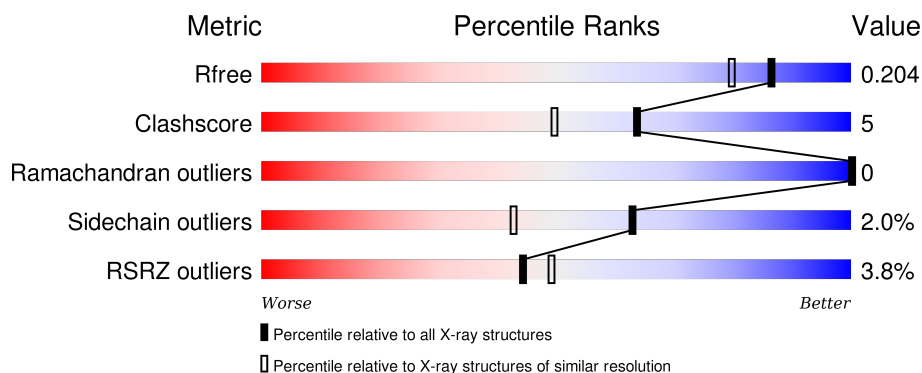
1 Overall quality at a glance

The following experimental techniques were used to determine the structure:

X-RAY DIFFRACTION

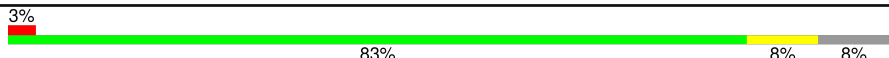
The reported resolution of this entry is 1.72 Å.

Percentile scores (ranging between 0-100) for global validation metrics of the entry are shown in the following graphic. The table shows the number of entries on which the scores are based.



Metric	Whole archive (#Entries)	Similar resolution (#Entries, resolution range(Å))
R_{free}	91344	3998 (1.74-1.70)
Clashscore	102246	4425 (1.74-1.70)
Ramachandran outliers	100387	4360 (1.74-1.70)
Sidechain outliers	100360	4360 (1.74-1.70)
RSRZ outliers	91569	4010 (1.74-1.70)

The table below summarises the geometric issues observed across the polymeric chains and their fit to the electron density. The red, orange, yellow and green segments on the lower bar indicate the fraction of residues that contain outliers for ≥ 3 , 2, 1 and 0 types of geometric quality criteria. A grey segment represents the fraction of residues that are not modelled. The numeric value for each fraction is indicated below the corresponding segment, with a dot representing fractions $\leq 5\%$. The upper red bar (where present) indicates the fraction of residues that have poor fit to the electron density. The numeric value is given above the bar.

Mol	Chain	Length	Quality of chain
1	A	343	

2 Entry composition

There are 3 unique types of molecules in this entry. The entry contains 5875 atoms, of which 3100 are hydrogens and 0 are deuteriums.

In the tables below, the ZeroOcc column contains the number of atoms modelled with zero occupancy, the AltConf column contains the number of residues with at least one atom in alternate conformation and the Trace column contains the number of residues modelled with at most 2 atoms.

- Molecule 1 is a protein called Bacteriophytochrome.

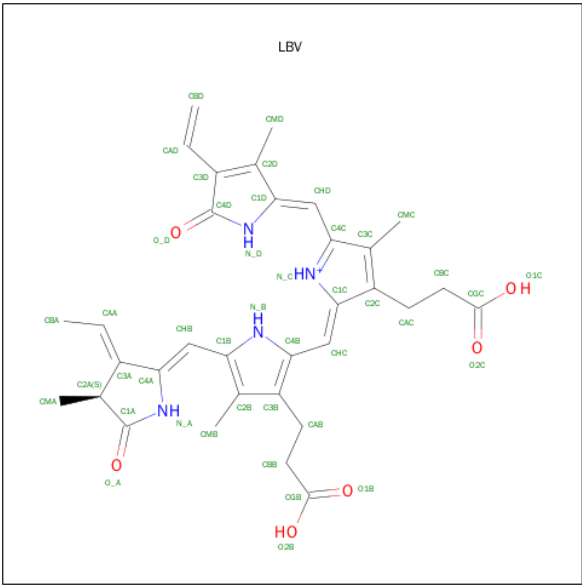
Mol	Chain	Residues	Atoms						ZeroOcc	AltConf	Trace
			Total	C	H	N	O	S			
1	A	315	4904	1551	2470	433	439	11	795	6	0

There are 24 discrepancies between the modelled and reference sequences:

Chain	Residue	Modelled	Actual	Comment	Reference
A	-13	MET	-	EXPRESSION TAG	UNP Q9RZA4
A	-12	ALA	-	EXPRESSION TAG	UNP Q9RZA4
A	-11	SER	-	EXPRESSION TAG	UNP Q9RZA4
A	-10	MET	-	EXPRESSION TAG	UNP Q9RZA4
A	-9	THR	-	EXPRESSION TAG	UNP Q9RZA4
A	-8	GLY	-	EXPRESSION TAG	UNP Q9RZA4
A	-7	GLY	-	EXPRESSION TAG	UNP Q9RZA4
A	-6	GLN	-	EXPRESSION TAG	UNP Q9RZA4
A	-5	GLN	-	EXPRESSION TAG	UNP Q9RZA4
A	-4	MET	-	EXPRESSION TAG	UNP Q9RZA4
A	-3	GLY	-	EXPRESSION TAG	UNP Q9RZA4
A	-2	ARG	-	EXPRESSION TAG	UNP Q9RZA4
A	-1	GLY	-	EXPRESSION TAG	UNP Q9RZA4
A	0	SER	-	EXPRESSION TAG	UNP Q9RZA4
A	207	HIS	ASP	ENGINEERED MUTATION	UNP Q9RZA4
A	307	SER	TYR	ENGINEERED MUTATION	UNP Q9RZA4
A	322	LEU	-	EXPRESSION TAG	UNP Q9RZA4
A	323	GLU	-	EXPRESSION TAG	UNP Q9RZA4
A	324	HIS	-	EXPRESSION TAG	UNP Q9RZA4
A	325	HIS	-	EXPRESSION TAG	UNP Q9RZA4
A	326	HIS	-	EXPRESSION TAG	UNP Q9RZA4
A	327	HIS	-	EXPRESSION TAG	UNP Q9RZA4
A	328	HIS	-	EXPRESSION TAG	UNP Q9RZA4
A	329	HIS	-	EXPRESSION TAG	UNP Q9RZA4

- Molecule 2 is 3-[2-[(Z)-[3-(2-CARBOXYETHYL)-5-[(Z)-(4-ETHENYL-3-METHYL-5-OXIDANYLIDENE-PYRROL-2-YLIDENE)METHYL]-4-METHYL-PYRROL-1-IUM-2-YLI

DENE]METHYL]-5-[(Z)-[(3E)-3-ETHYLIDENE-4-METHYL-5-OXIDANYLIDENE-PYRROLIDIN-2-YLIDENE]METHYL]-4-METHYL-1H-PYRROL-3-YL]PROPANOIC ACID (three-letter code: LBV) (formula: C₃₃H₃₇N₄O₆).



Mol	Chain	Residues	Atoms					ZeroOcc	AltConf
			Total	C	H	N	O		
2	A	1	77	33	34	4	6	13	0

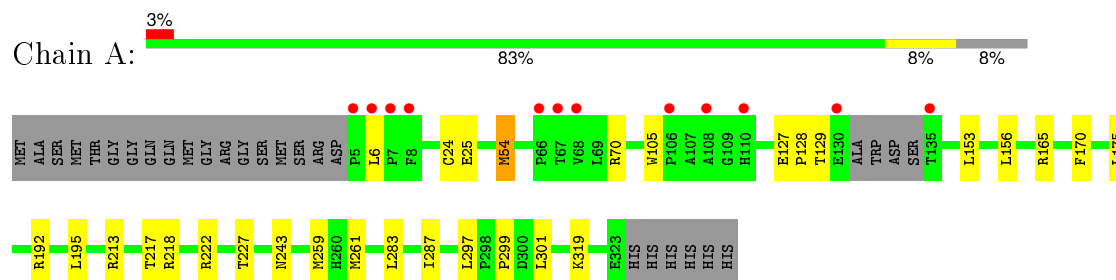
- Molecule 3 is water.

Mol	Chain	Residues	Atoms			ZeroOcc	AltConf
			Total	H	O		
3	A	298	894	596	298	596	0

3 Residue-property plots [i](#)

These plots are drawn for all protein, RNA and DNA chains in the entry. The first graphic for a chain summarises the proportions of errors displayed in the second graphic. The second graphic shows the sequence view annotated by issues in geometry and electron density. Residues are color-coded according to the number of geometric quality criteria for which they contain at least one outlier: green = 0, yellow = 1, orange = 2 and red = 3 or more. A red dot above a residue indicates a poor fit to the electron density ($RSRZ > 2$). Stretches of 2 or more consecutive residues without any outlier are shown as a green connector. Residues present in the sample, but not in the model, are shown in grey.

● Molecule 1: Bacteriophytochrome



4 Data and refinement statistics

Property	Value	Source
Space group	C 1 2 1	Depositor
Cell constants a, b, c, α , β , γ	87.07Å 51.67Å 80.23Å 90.00° 115.33° 90.00°	Depositor
Resolution (Å)	43.19 – 1.72 43.19 – 1.72	Depositor EDS
% Data completeness (in resolution range)	97.9 (43.19-1.72) 98.0 (43.19-1.72)	Depositor EDS
R_{merge}	0.04	Depositor
R_{sym}	(Not available)	Depositor
$\langle I/\sigma(I) \rangle$ ¹	5.63 (at 1.72Å)	Xtriage
Refinement program	REFMAC 5.5.0109	Depositor
R, R_{free}	0.168 , 0.196 0.179 , 0.204	Depositor DCC
R_{free} test set	1701 reflections (5.34%)	DCC
Wilson B-factor (Å ²)	18.0	Xtriage
Anisotropy	0.049	Xtriage
Bulk solvent k_{sol} (e/Å ³), B_{sol} (Å ²)	0.39 , 49.9	EDS
Estimated twinning fraction	No twinning to report.	Xtriage
L-test for twinning ²	$\langle L \rangle = 0.50$, $\langle L^2 \rangle = 0.33$	Xtriage
Outliers	0 of 33563 reflections	Xtriage
F_o, F_c correlation	0.96	EDS
Total number of atoms	5875	wwPDB-VP
Average B, all atoms (Å ²)	27.0	wwPDB-VP

Xtriage's analysis on translational NCS is as follows: *The largest off-origin peak in the Patterson function is 7.80% of the height of the origin peak. No significant pseudotranslation is detected.*

¹Intensities estimated from amplitudes.

²Theoretical values of $\langle |L| \rangle$, $\langle L^2 \rangle$ for acentric reflections are 0.5, 0.375 respectively for untwinned datasets, and 0.333, 0.2 for perfectly twinned datasets.

5 Model quality [i](#)

5.1 Standard geometry [i](#)

Bond lengths and bond angles in the following residue types are not validated in this section: LBV

The Z score for a bond length (or angle) is the number of standard deviations the observed value is removed from the expected value. A bond length (or angle) with $|Z| > 5$ is considered an outlier worth inspection. RMSZ is the root-mean-square of all Z scores of the bond lengths (or angles).

Mol	Chain	Bond lengths		Bond angles	
		RMSZ	$\# Z > 5$	RMSZ	$\# Z > 5$
1	A	0.51	0/2510	0.68	0/3433

Chiral center outliers are detected by calculating the chiral volume of a chiral center and verifying if the center is modelled as a planar moiety or with the opposite hand. A planarity outlier is detected by checking planarity of atoms in a peptide group, atoms in a mainchain group or atoms of a sidechain that are expected to be planar.

Mol	Chain	#Chirality outliers	#Planarity outliers
1	A	0	1

There are no bond length outliers.

There are no bond angle outliers.

There are no chirality outliers.

All (1) planarity outliers are listed below:

Mol	Chain	Res	Type	Group
1	A	6	LEU	Peptide

5.2 Too-close contacts [i](#)

In the following table, the Non-H and H(model) columns list the number of non-hydrogen atoms and hydrogen atoms in the chain respectively. The H(added) column lists the number of hydrogen atoms added and optimized by MolProbity. The Clashes column lists the number of clashes within the asymmetric unit, whereas Symm-Clashes lists symmetry related clashes.

Mol	Chain	Non-H	H(model)	H(added)	Clashes	Symm-Clashes
1	A	2434	2470	2451	26	0
2	A	43	34	33	1	0

Continued on next page...

Continued from previous page...

Mol	Chain	Non-H	H(model)	H(added)	Clashes	Symm-Clashes
3	A	298	596	0	8	0
All	All	2775	3100	2484	26	0

The all-atom clashscore is defined as the number of clashes found per 1000 atoms (including hydrogen atoms). The all-atom clashscore for this structure is 5.

All (26) close contacts within the same asymmetric unit are listed below, sorted by their clash magnitude.

Atom-1	Atom-2	Interatomic distance (Å)	Clash overlap (Å)
1:A:297:LEU:CD1	1:A:301:LEU:HD23	2.24	0.66
1:A:227:THR:HA	1:A:261[A]:MET:HE3	1.80	0.63
1:A:218:ARG:O	3:A:460:HOH:O	2.16	0.59
1:A:261[B]:MET:CE	3:A:636:HOH:O	2.50	0.59
1:A:213:ARG:O	1:A:217[A]:THR:HG23	2.03	0.58
1:A:297:LEU:HD11	1:A:301:LEU:HD23	1.90	0.53
1:A:297:LEU:HD11	1:A:301:LEU:CD2	2.40	0.51
1:A:156:LEU:HD22	1:A:319:LYS:HG3	1.93	0.50
1:A:227:THR:HA	1:A:261[A]:MET:CE	2.41	0.49
1:A:261[B]:MET:HE1	3:A:636:HOH:O	2.11	0.49
1:A:261[A]:MET:HE2	3:A:636:HOH:O	2.12	0.49
1:A:25:GLU:HG2	3:A:511:HOH:O	2.13	0.48
1:A:153:LEU:C	1:A:153:LEU:HD13	2.33	0.48
1:A:129:THR:HG21	1:A:299:PRO:HD2	1.96	0.48
1:A:261[B]:MET:HE2	3:A:636:HOH:O	2.13	0.47
1:A:129:THR:HG21	1:A:299:PRO:CD	2.45	0.46
1:A:259[B]:MET:HG2	3:A:506:HOH:O	2.18	0.44
1:A:129:THR:HG21	1:A:299:PRO:HG2	2.00	0.44
1:A:54:MET:HE3	1:A:70:ARG:HB2	2.00	0.44
1:A:217[A]:THR:HG22	1:A:283:LEU:HB2	2.00	0.43
1:A:243:ASN:ND2	3:A:553:HOH:O	2.42	0.43
1:A:165[B]:ARG:NH1	1:A:170:PHE:O	2.50	0.42
1:A:127:GLU:HA	1:A:128:PRO:HD3	1.91	0.42
1:A:259[B]:MET:CE	2:A:330:LBV:HBA2	2.50	0.41
1:A:165[A]:ARG:NH2	1:A:192:ARG:HA	2.35	0.41
1:A:175:LEU:HD13	1:A:287[B]:ILE:CD1	2.51	0.41

There are no symmetry-related clashes.

5.3 Torsion angles [i](#)

5.3.1 Protein backbone [i](#)

In the following table, the Percentiles column shows the percent Ramachandran outliers of the chain as a percentile score with respect to all X-ray entries followed by that with respect to entries of similar resolution.

The Analysed column shows the number of residues for which the backbone conformation was analysed, and the total number of residues.

Mol	Chain	Analysed	Favoured	Allowed	Outliers	Percentiles	
1	A	317/343 (92%)	317 (100%)	0	0	100	100

There are no Ramachandran outliers to report.

5.3.2 Protein sidechains [i](#)

In the following table, the Percentiles column shows the percent sidechain outliers of the chain as a percentile score with respect to all X-ray entries followed by that with respect to entries of similar resolution.

The Analysed column shows the number of residues for which the sidechain conformation was analysed, and the total number of residues.

Mol	Chain	Analysed	Rotameric	Outliers	Percentiles	
1	A	259/275 (94%)	254 (98%)	5 (2%)	65	45

All (5) residues with a non-rotameric sidechain are listed below:

Mol	Chain	Res	Type
1	A	24	CYS
1	A	54	MET
1	A	105	TRP
1	A	195	LEU
1	A	222	ARG

Some sidechains can be flipped to improve hydrogen bonding and reduce clashes. All (1) such sidechains are listed below:

Mol	Chain	Res	Type
1	A	243	ASN

5.3.3 RNA ⓘ

There are no RNA molecules in this entry.

5.4 Non-standard residues in protein, DNA, RNA chains ⓘ

There are no non-standard protein/DNA/RNA residues in this entry.

5.5 Carbohydrates ⓘ

There are no carbohydrates in this entry.

5.6 Ligand geometry ⓘ

1 ligand is modelled in this entry.

In the following table, the Counts columns list the number of bonds (or angles) for which Mogul statistics could be retrieved, the number of bonds (or angles) that are observed in the model and the number of bonds (or angles) that are defined in the chemical component dictionary. The Link column lists molecule types, if any, to which the group is linked. The Z score for a bond length (or angle) is the number of standard deviations the observed value is removed from the expected value. A bond length (or angle) with $|Z| > 2$ is considered an outlier worth inspection. RMSZ is the root-mean-square of all Z scores of the bond lengths (or angles).

Mol	Type	Chain	Res	Link	Bond lengths			Bond angles		
					Counts	RMSZ	# $ Z > 2$	Counts	RMSZ	# $ Z > 2$
2	LBV	A	330	1	37,46,46	1.96	12 (32%)	37,67,67	1.32	5 (13%)

In the following table, the Chirals column lists the number of chiral outliers, the number of chiral centers analysed, the number of these observed in the model and the number defined in the chemical component dictionary. Similar counts are reported in the Torsion and Rings columns. '-' means no outliers of that kind were identified.

Mol	Type	Chain	Res	Link	Chirals	Torsions	Rings
2	LBV	A	330	1	-	2/22/74/74	0/4/4/4

All (12) bond length outliers are listed below:

Mol	Chain	Res	Type	Atoms	Z	Observed(Å)	Ideal(Å)
2	A	330	LBV	C1C-N_C	-2.99	1.33	1.38
2	A	330	LBV	C1A-N_A	-2.93	1.33	1.37
2	A	330	LBV	C3D-C4D	-2.79	1.38	1.47

Continued on next page...

Continued from previous page...

Mol	Chain	Res	Type	Atoms	Z	Observed(Å)	Ideal(Å)
2	A	330	LBV	CAD-C3D	-2.41	1.40	1.47
2	A	330	LBV	C2A-C1A	-2.36	1.49	1.52
2	A	330	LBV	C1D-C2D	-2.36	1.40	1.45
2	A	330	LBV	CBA-CAA	-2.20	1.40	1.49
2	A	330	LBV	C1D-N_D	-2.10	1.34	1.37
2	A	330	LBV	CMC-C3C	2.69	1.56	1.50
2	A	330	LBV	CHB-C4A	3.15	1.41	1.34
2	A	330	LBV	CHC-C1C	3.56	1.42	1.34
2	A	330	LBV	CAA-C3A	4.79	1.39	1.33

All (5) bond angle outliers are listed below:

Mol	Chain	Res	Type	Atoms	Z	Observed(°)	Ideal(°)
2	A	330	LBV	CHB-C4A-C3A	-3.61	120.38	127.21
2	A	330	LBV	CHD-C1D-C2D	-2.13	122.46	126.89
2	A	330	LBV	C1C-N_C-C4C	2.24	112.78	109.96
2	A	330	LBV	CMD-C2D-C1D	2.27	127.22	124.20
2	A	330	LBV	C1B-N_B-C4B	2.76	113.28	108.29

There are no chirality outliers.

All (2) torsion outliers are listed below:

Mol	Chain	Res	Type	Atoms
2	A	330	LBV	C1D-CHD-C4C-C3C
2	A	330	LBV	C1D-CHD-C4C-N_C

There are no ring outliers.

1 monomer is involved in 1 short contact:

Mol	Chain	Res	Type	Clashes	Symm-Clashes
2	A	330	LBV	1	0

5.7 Other polymers

There are no such residues in this entry.

5.8 Polymer linkage issues

There are no chain breaks in this entry.

6 Fit of model and data [i](#)

6.1 Protein, DNA and RNA chains [i](#)

In the following table, the column labelled ‘#RSRZ> 2’ contains the number (and percentage) of RSRZ outliers, followed by percent RSRZ outliers for the chain as percentile scores relative to all X-ray entries and entries of similar resolution. The OWAB column contains the minimum, median, 95th percentile and maximum values of the occupancy-weighted average B-factor per residue. The column labelled ‘Q< 0.9’ lists the number of (and percentage) of residues with an average occupancy less than 0.9.

Mol	Chain	Analysed	<RSRZ>	#RSRZ>2		OWAB(Å ²)	Q<0.9
1	A	315/343 (91%)	0.04	12 (3%)	44 49	12, 24, 52, 65	0

All (12) RSRZ outliers are listed below:

Mol	Chain	Res	Type	RSRZ
1	A	6	LEU	7.8
1	A	5	PRO	5.5
1	A	108	ALA	3.6
1	A	110	HIS	3.5
1	A	66	PRO	3.4
1	A	106	PRO	3.3
1	A	67	THR	3.3
1	A	8	PHE	2.2
1	A	135	THR	2.1
1	A	130	GLU	2.1
1	A	68	VAL	2.0
1	A	7	PRO	2.0

6.2 Non-standard residues in protein, DNA, RNA chains [i](#)

There are no non-standard protein/DNA/RNA residues in this entry.

6.3 Carbohydrates [i](#)

There are no carbohydrates in this entry.

6.4 Ligands [i](#)

In the following table, the Atoms column lists the number of modelled atoms in the group and the number defined in the chemical component dictionary. LLDF column lists the quality of electron

density of the group with respect to its neighbouring residues in protein, DNA or RNA chains. The B-factors column lists the minimum, median, 95th percentile and maximum values of B factors of atoms in the group. The column labelled 'Q< 0.9' lists the number of atoms with occupancy less than 0.9.

Mol	Type	Chain	Res	Atoms	RSCC	RSR	LLDF	B-factors(Å ²)	Q<0.9
2	LBV	A	330	43/43	0.96	0.08	-0.02	12,17,29,33	13

6.5 Other polymers [i](#)

There are no such residues in this entry.