



Full wwPDB X-ray Structure Validation Report ⓘ

Feb 1, 2016 – 01:00 PM GMT

PDB ID : 3SFZ
Title : Crystal structure of full-length murine Apaf-1
Authors : Eschenburg, S.; Reubold, T.F.
Deposited on : 2011-06-14
Resolution : 3.00 Å(reported)

This is a Full wwPDB X-ray Structure Validation Report for a publicly released PDB entry.
We welcome your comments at validation@mail.wwpdb.org
A user guide is available at
<http://wwpdb.org/validation/2016/XrayValidationReportHelp>
with specific help available everywhere you see the ⓘ symbol.

The following versions of software and data (see [references ⓘ](#)) were used in the production of this report:

MolProbity : 4.02b-467
Mogul : 1.7 (RC4), CSD as536be (2015)
Xtriage (Phenix) : 1.9-1692
EDS : rb-20026688
Percentile statistics : 20151230.v01 (using entries in the PDB archive December 30th 2015)
Refmac : 5.8.0135
CCP4 : 6.5.0
Ideal geometry (proteins) : Engh & Huber (2001)
Ideal geometry (DNA, RNA) : Parkinson et al. (1996)
Validation Pipeline (wwPDB-VP) : trunk26865

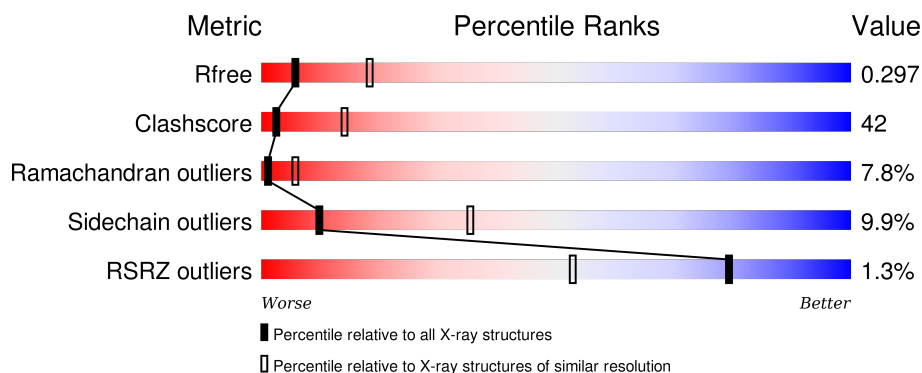
1 Overall quality at a glance

The following experimental techniques were used to determine the structure:

X-RAY DIFFRACTION

The reported resolution of this entry is 3.00 Å.

Percentile scores (ranging between 0-100) for global validation metrics of the entry are shown in the following graphic. The table shows the number of entries on which the scores are based.



Metric	Whole archive (#Entries)	Similar resolution (#Entries, resolution range(Å))
R_{free}	91344	1578 (3.00-3.00)
Clashscore	102246	1912 (3.00-3.00)
Ramachandran outliers	100387	1853 (3.00-3.00)
Sidechain outliers	100360	1856 (3.00-3.00)
RSRZ outliers	91569	1592 (3.00-3.00)

The table below summarises the geometric issues observed across the polymeric chains and their fit to the electron density. The red, orange, yellow and green segments on the lower bar indicate the fraction of residues that contain outliers for ≥ 3 , 2, 1 and 0 types of geometric quality criteria. A grey segment represents the fraction of residues that are not modelled. The numeric value for each fraction is indicated below the corresponding segment, with a dot representing fractions $\leq 5\%$. The upper red bar (where present) indicates the fraction of residues that have poor fit to the electron density. The numeric value is given above the bar.

Mol	Chain	Length	Quality of chain
1	A	1249	

The following table lists non-polymeric compounds, carbohydrate monomers and non-standard residues in protein, DNA, RNA chains that are outliers for geometric or electron-density-fit criteria:

Mol	Type	Chain	Res	Chirality	Geometry	Clashes	Electron density
3	GBL	A	1255	-	-	X	X

2 Entry composition [i](#)

There are 4 unique types of molecules in this entry. The entry contains 9194 atoms, of which 0 are hydrogens and 0 are deuteriums.

In the tables below, the ZeroOcc column contains the number of atoms modelled with zero occupancy, the AltConf column contains the number of residues with at least one atom in alternate conformation and the Trace column contains the number of residues modelled with at most 2 atoms.

- Molecule 1 is a protein called Apoptotic peptidase activating factor 1.

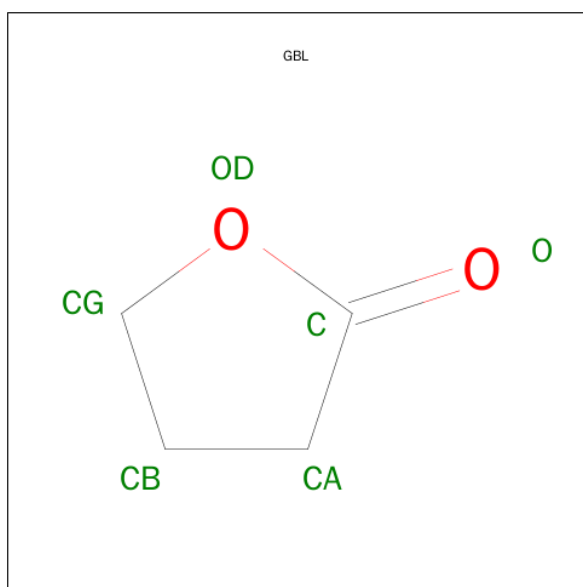
Mol	Chain	Residues	Atoms					ZeroOcc	AltConf	Trace
			Total	C	N	O	S			
1	A	1133	9015	5715	1554	1691	55	0	0	0

- Molecule 2 is ADENOSINE-5'-DIPHOSPHATE (three-letter code: ADP) (formula: $C_{10}H_{15}N_5O_{10}P_2$).



Mol	Chain	Residues	Atoms					ZeroOcc	AltConf
			Total	C	N	O	P		
2	A	1	27	10	5	10	2	0	0

- Molecule 3 is GAMMA-BUTYROLACTONE (three-letter code: GBL) (formula: $C_4H_6O_2$).



Mol	Chain	Residues	Atoms			ZeroOcc	AltConf
3	A	1	Total	C	O	0	0
			6	4	2		
3	A	1	Total	C	O	0	0
			6	4	2		
3	A	1	Total	C	O	0	0
			6	4	2		
3	A	1	Total	C	O	0	0
			6	4	2		
3	A	1	Total	C	O	0	0
			6	4	2		

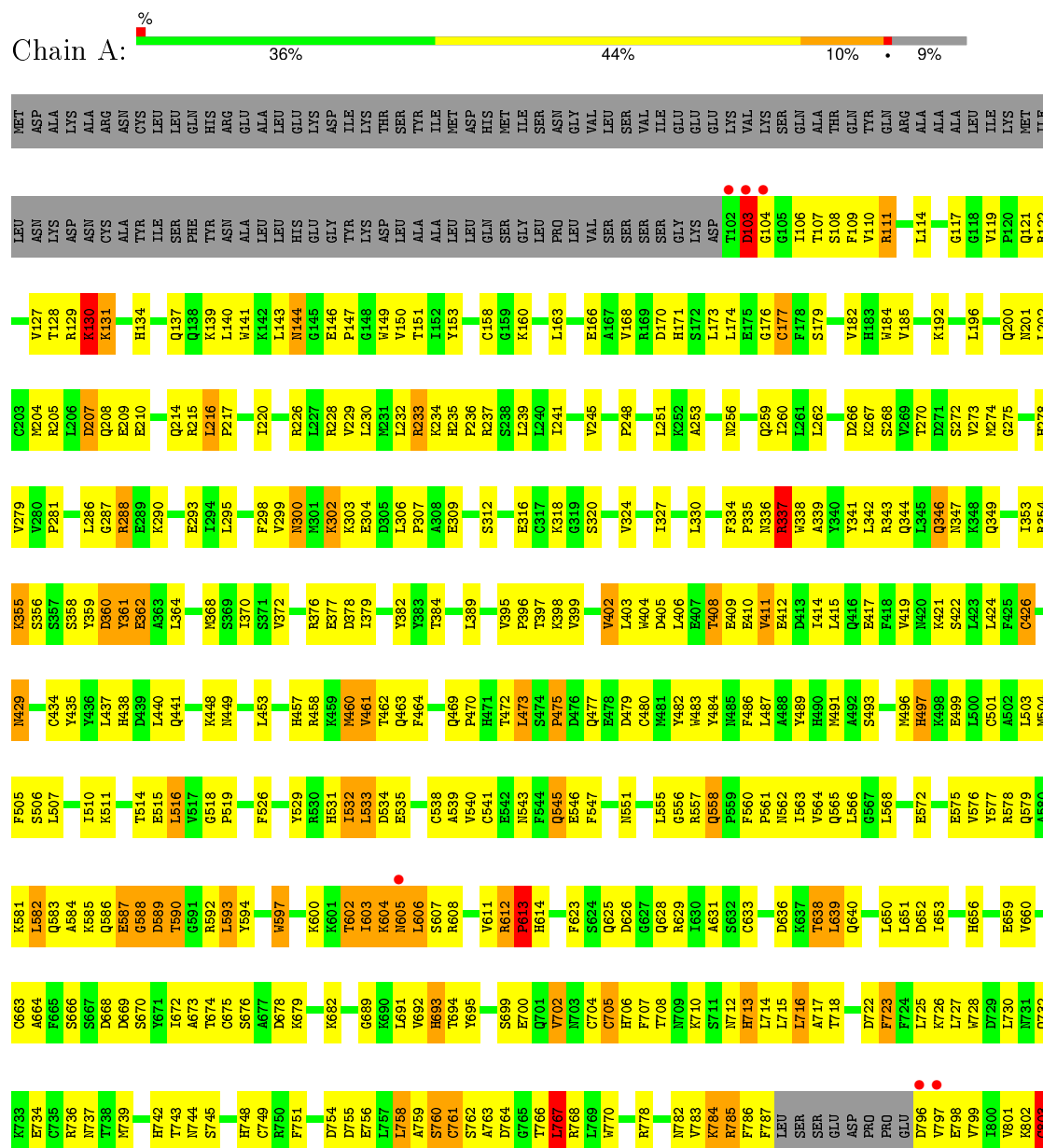
- Molecule 4 is water.

Mol	Chain	Residues	Atoms		ZeroOcc	AltConf
4	A	122	Total	O	0	0
			122	122		

3 Residue-property plots

These plots are drawn for all protein, RNA and DNA chains in the entry. The first graphic for a chain summarises the proportions of errors displayed in the second graphic. The second graphic shows the sequence view annotated by issues in geometry and electron density. Residues are color-coded according to the number of geometric quality criteria for which they contain at least one outlier: green = 0, yellow = 1, orange = 2 and red = 3 or more. A red dot above a residue indicates a poor fit to the electron density ($RSRZ > 2$). Stretches of 2 or more consecutive residues without any outlier are shown as a green connector. Residues present in the sample, but not in the model, are shown in grey.

- Molecule 1: Apoptotic peptidase activating factor 1





4 Data and refinement statistics

Property	Value	Source
Space group	P 21 21 21	Depositor
Cell constants a, b, c, α , β , γ	72.65Å 113.07Å 243.56Å 90.00° 90.00° 90.00°	Depositor
Resolution (Å)	20.00 – 3.00 48.83 – 3.00	Depositor EDS
% Data completeness (in resolution range)	98.7 (20.00-3.00) 98.6 (48.83-3.00)	Depositor EDS
R_{merge}	0.09	Depositor
R_{sym}	(Not available)	Depositor
$\langle I/\sigma(I) \rangle$ ¹	3.45 (at 3.01Å)	Xtriage
Refinement program	CNS	Depositor
R, R_{free}	0.235 , 0.298 0.236 , 0.297	Depositor DCC
R_{free} test set	1423 reflections (3.52%)	DCC
Wilson B-factor (Å ²)	76.9	Xtriage
Anisotropy	0.473	Xtriage
Bulk solvent k_{sol} (e/Å ³), B_{sol} (Å ²)	0.33 , 65.8	EDS
Estimated twinning fraction	No twinning to report.	Xtriage
L-test for twinning ²	$\langle L \rangle = 0.48$, $\langle L^2 \rangle = 0.32$	Xtriage
Outliers	0 of 40531 reflections	Xtriage
F_o, F_c correlation	0.92	EDS
Total number of atoms	9194	wwPDB-VP
Average B, all atoms (Å ²)	78.0	wwPDB-VP

Xtriage's analysis on translational NCS is as follows: *The largest off-origin peak in the Patterson function is 2.91% of the height of the origin peak. No significant pseudotranslation is detected.*

¹Intensities estimated from amplitudes.

²Theoretical values of $\langle |L| \rangle$, $\langle L^2 \rangle$ for acentric reflections are 0.5, 0.375 respectively for untwinned datasets, and 0.333, 0.2 for perfectly twinned datasets.

5 Model quality [i](#)

5.1 Standard geometry [i](#)

Bond lengths and bond angles in the following residue types are not validated in this section: GBL, ADP

The Z score for a bond length (or angle) is the number of standard deviations the observed value is removed from the expected value. A bond length (or angle) with $|Z| > 5$ is considered an outlier worth inspection. RMSZ is the root-mean-square of all Z scores of the bond lengths (or angles).

Mol	Chain	Bond lengths		Bond angles	
		RMSZ	$\# Z > 5$	RMSZ	$\# Z > 5$
1	A	0.44	0/9211	0.71	5/12471 (0.0%)

There are no bond length outliers.

All (5) bond angle outliers are listed below:

Mol	Chain	Res	Type	Atoms	Z	Observed(°)	Ideal(°)
1	A	761	CYS	CA-CB-SG	-6.23	102.79	114.00
1	A	767	LEU	N-CA-C	-5.91	95.05	111.00
1	A	705	CYS	CA-CB-SG	5.50	123.91	114.00
1	A	460	MET	N-CA-C	-5.38	96.47	111.00
1	A	796	ASP	CB-CG-OD2	5.17	122.96	118.30

There are no chirality outliers.

There are no planarity outliers.

5.2 Too-close contacts [i](#)

In the following table, the Non-H and H(model) columns list the number of non-hydrogen atoms and hydrogen atoms in the chain respectively. The H(added) column lists the number of hydrogen atoms added and optimized by MolProbity. The Clashes column lists the number of clashes within the asymmetric unit, whereas Symm-Clashes lists symmetry related clashes.

Mol	Chain	Non-H	H(model)	H(added)	Clashes	Symm-Clashes
1	A	9015	0	8883	749	0
2	A	27	0	12	1	0
3	A	30	0	30	8	0
4	A	122	0	0	1	0
All	All	9194	0	8925	749	0

The all-atom clashscore is defined as the number of clashes found per 1000 atoms (including hydrogen atoms). The all-atom clashscore for this structure is 42.

All (749) close contacts within the same asymmetric unit are listed below, sorted by their clash magnitude.

Atom-1	Atom-2	Interatomic distance (Å)	Clash overlap (Å)
1:A:1054:GLN:HB2	1:A:1057:ARG:HD3	1.37	1.06
1:A:575:GLU:HG2	1:A:578:ARG:HH11	1.15	1.05
1:A:1162:LEU:HD23	1:A:1163:HIS:H	1.18	1.02
1:A:785:ARG:HG3	1:A:785:ARG:HH11	1.25	1.01
1:A:342:LEU:O	1:A:346:GLN:HG2	1.62	0.98
1:A:1116:LEU:HD12	1:A:1116:LEU:H	1.25	0.97
1:A:562:ASN:ND2	1:A:565:GLN:H	1.63	0.97
1:A:1107:LYS:HG2	1:A:1108:THR:HG23	1.42	0.96
1:A:288:ARG:HE	1:A:288:ARG:H	0.98	0.96
1:A:562:ASN:HD22	1:A:565:GLN:H	1.02	0.94
1:A:228:ARG:HB3	1:A:228:ARG:NH1	1.81	0.94
1:A:288:ARG:HE	1:A:288:ARG:N	1.67	0.93
1:A:228:ARG:HG3	1:A:256:ASN:HB3	1.48	0.93
1:A:713:HIS:CD2	1:A:713:HIS:H	1.87	0.93
1:A:575:GLU:HG2	1:A:578:ARG:NH1	1.86	0.90
1:A:534:ASP:CB	1:A:541:CYS:HB2	2.01	0.90
1:A:1001:GLY:HA3	1:A:1028:GLN:HE22	1.34	0.89
1:A:1074:THR:O	1:A:1076:ARG:N	2.06	0.89
1:A:364:LEU:HD22	1:A:440:LEU:HB3	1.54	0.88
1:A:989:GLU:HG3	1:A:992:ASN:HD22	1.39	0.87
1:A:448:LYS:HG2	1:A:449:ASN:ND2	1.88	0.87
1:A:288:ARG:NE	1:A:288:ARG:H	1.72	0.86
1:A:1029:VAL:HG11	1:A:1072:VAL:HG13	1.55	0.86
1:A:739:MET:HG2	1:A:770:TRP:CD1	2.12	0.85
1:A:396:PRO:HG2	1:A:399:VAL:HG23	1.59	0.84
1:A:529:TYR:O	1:A:533:LEU:HB2	1.76	0.84
1:A:534:ASP:HB3	1:A:541:CYS:HB2	1.60	0.84
1:A:971:PRO:O	1:A:972:HIS:HB2	1.78	0.84
1:A:1032:TRP:O	1:A:1033:GLN:HB2	1.77	0.83
1:A:974:GLU:HA	1:A:991:PRO:HD3	1.59	0.83
1:A:220:ILE:H	1:A:220:ILE:HD12	1.43	0.83
1:A:1128:GLY:O	1:A:1129:CYS:HB3	1.78	0.83
1:A:547:PHE:CD1	1:A:576:VAL:HG11	2.13	0.83
1:A:216:LEU:HD12	1:A:216:LEU:H	1.43	0.83
1:A:1108:THR:HG21	1:A:1124:LYS:HG2	1.61	0.82
1:A:856:VAL:HG23	1:A:890:PHE:CZ	2.15	0.81
1:A:1162:LEU:HD23	1:A:1163:HIS:N	1.93	0.81

Continued on next page...

Continued from previous page...

Atom-1	Atom-2	Interatomic distance (Å)	Clash overlap (Å)
1:A:1191:LYS:O	1:A:1205:VAL:HG13	1.80	0.81
1:A:754:ASP:O	1:A:756:GLU:N	2.13	0.81
1:A:938:LEU:HD13	1:A:967:CYS:SG	2.20	0.81
1:A:149:TRP:CZ2	1:A:273:VAL:HG21	2.16	0.81
1:A:814:ILE:HG22	1:A:823:LEU:HD13	1.61	0.81
1:A:575:GLU:CG	1:A:578:ARG:HH11	1.93	0.80
1:A:1063:PHE:HB3	1:A:1087:THR:HG23	1.63	0.80
1:A:668:ASP:OD2	1:A:670:SER:HB2	1.81	0.80
1:A:228:ARG:HH11	1:A:228:ARG:HB3	1.42	0.80
1:A:675:CYS:HB2	1:A:702:VAL:HG22	1.63	0.80
1:A:961:GLU:HG2	1:A:978:PHE:CE2	2.16	0.80
1:A:587:GLU:OE1	1:A:592:ARG:HD2	1.82	0.79
1:A:1049:ASP:HB3	1:A:1061:TRP:CH2	2.18	0.79
1:A:862:TYR:HA	1:A:885:VAL:HG23	1.64	0.78
1:A:1155:ASN:OD1	1:A:1160:GLN:HB2	1.83	0.78
1:A:940:VAL:HG13	1:A:964:VAL:HG22	1.65	0.78
1:A:954:GLY:O	1:A:956:ILE:HD13	1.84	0.77
1:A:732:GLN:HG2	1:A:734:GLU:H	1.48	0.77
1:A:942:ASN:HD22	1:A:942:ASN:H	1.32	0.77
1:A:201:ASN:HA	1:A:204:MET:HE2	1.67	0.77
1:A:819:ASN:HD21	1:A:840:HIS:HA	1.50	0.77
1:A:856:VAL:HG22	1:A:866:LEU:HB3	1.66	0.77
1:A:838:GLY:HA3	1:A:859:LEU:HD21	1.67	0.76
1:A:1087:THR:O	1:A:1105:ALA:HB1	1.85	0.76
1:A:949:ILE:HG23	1:A:956:ILE:HD11	1.67	0.76
1:A:1112:TRP:HA	1:A:1120:LEU:HG	1.66	0.76
1:A:1150:GLU:HA	1:A:1166:ALA:HB1	1.68	0.76
1:A:819:ASN:ND2	1:A:840:HIS:HA	2.02	0.75
1:A:1091:CYS:HB2	1:A:1103:THR:HA	1.66	0.75
1:A:785:ARG:CG	1:A:785:ARG:HH11	1.99	0.75
1:A:992:ASN:HD21	1:A:995:VAL:N	1.85	0.74
1:A:408:THR:HG22	1:A:412:GLU:OE1	1.88	0.74
1:A:713:HIS:H	1:A:713:HIS:HD2	1.35	0.74
1:A:151:THR:OG1	1:A:262:LEU:HD21	1.87	0.74
1:A:987:ILE:O	1:A:996:PHE:HB2	1.87	0.73
1:A:1063:PHE:HB2	1:A:1087:THR:OG1	1.89	0.72
1:A:589:ASP:O	1:A:590:THR:HG23	1.88	0.72
1:A:1107:LYS:CB	1:A:1107:LYS:HZ2	2.02	0.72
1:A:1140:ILE:HG13	1:A:1156:VAL:HB	1.71	0.72
1:A:934:GLU:HG2	1:A:935:THR:N	2.04	0.71
1:A:196:LEU:O	1:A:200:GLN:HG3	1.90	0.71

Continued on next page...

Continued from previous page...

Atom-1	Atom-2	Interatomic distance (Å)	Clash overlap (Å)
1:A:1211:SER:C	1:A:1213:THR:H	1.93	0.71
1:A:1113:SER:O	1:A:1114:PHE:HB2	1.88	0.71
1:A:760:SER:HB3	1:A:770:TRP:CZ3	2.26	0.71
1:A:1136:SER:O	1:A:1138:ASP:N	2.23	0.71
1:A:934:GLU:HG2	1:A:935:THR:H	1.54	0.71
1:A:1183:ASP:OD1	1:A:1223:LYS:HE3	1.90	0.71
1:A:364:LEU:CD2	1:A:440:LEU:HB3	2.20	0.70
1:A:562:ASN:ND2	1:A:565:GLN:N	2.37	0.70
1:A:802:LYS:O	1:A:803:CYS:O	2.09	0.70
1:A:562:ASN:HD21	1:A:564:VAL:HB	1.56	0.70
1:A:1106:ASP:O	1:A:1107:LYS:HB2	1.91	0.70
1:A:814:ILE:CD1	1:A:848:PHE:HB2	2.22	0.69
1:A:107:THR:OG1	1:A:110:VAL:HG23	1.91	0.69
1:A:108:SER:HA	1:A:111:ARG:HD2	1.74	0.69
1:A:896:SER:HB2	1:A:909:TRP:O	1.92	0.69
1:A:139:LYS:HD2	1:A:278:HIS:HB3	1.73	0.69
1:A:491:MET:CE	1:A:503:LEU:HD22	2.22	0.69
1:A:920:ILE:HG12	1:A:921:VAL:HG23	1.73	0.69
1:A:1140:ILE:O	1:A:1156:VAL:N	2.21	0.69
1:A:1083:CYS:O	1:A:1110:LYS:HD2	1.92	0.69
1:A:1012:THR:OG1	1:A:1017:THR:HB	1.93	0.69
1:A:376:ARG:HB2	1:A:376:ARG:HH11	1.56	0.68
1:A:989:GLU:CG	1:A:992:ASN:HD22	2.06	0.68
1:A:612:ARG:HG3	1:A:905:THR:HG22	1.74	0.68
1:A:1088:VAL:HA	1:A:1105:ALA:HB2	1.76	0.68
1:A:782:ASN:HD21	1:A:784:LYS:HB3	1.59	0.68
1:A:1091:CYS:CB	1:A:1103:THR:HA	2.24	0.68
1:A:588:GLY:O	1:A:589:ASP:HB2	1.94	0.68
1:A:295:LEU:O	1:A:299:VAL:HG22	1.92	0.68
1:A:1168:ILE:HG13	1:A:1177:HIS:N	2.09	0.68
1:A:767:LEU:HD22	1:A:768:ARG:N	2.08	0.68
1:A:302:LYS:HG3	1:A:304:GLU:HG2	1.75	0.68
1:A:376:ARG:HB2	1:A:376:ARG:NH1	2.09	0.67
1:A:1102:SER:HB2	1:A:1111:ILE:HG12	1.75	0.67
1:A:760:SER:HB3	1:A:770:TRP:HZ3	1.58	0.67
1:A:1116:LEU:CD1	1:A:1116:LEU:H	2.03	0.67
1:A:961:GLU:HG2	1:A:978:PHE:CZ	2.29	0.67
1:A:395:VAL:O	1:A:434:CYS:HA	1.94	0.67
1:A:562:ASN:HD22	1:A:565:GLN:N	1.85	0.67
1:A:220:ILE:N	1:A:220:ILE:HD12	2.09	0.67
1:A:1111:ILE:C	1:A:1111:ILE:HD13	2.15	0.66

Continued on next page...

Continued from previous page...

Atom-1	Atom-2	Interatomic distance (Å)	Clash overlap (Å)
1:A:884:TRP:O	1:A:901:SER:HB2	1.96	0.66
1:A:603:ILE:HG21	1:A:1241:ILE:HG23	1.76	0.66
1:A:1140:ILE:HD11	1:A:1156:VAL:O	1.96	0.66
1:A:484:TYR:CE2	1:A:516:LEU:HD12	2.31	0.66
1:A:176:GLY:O	1:A:177:CYS:HB2	1.95	0.66
1:A:1042:ALA:HB1	1:A:1044:GLN:CD	2.16	0.65
1:A:1001:GLY:O	1:A:1002:HIS:HB2	1.95	0.65
1:A:1139:GLY:O	1:A:1140:ILE:HB	1.96	0.65
1:A:1001:GLY:HA3	1:A:1028:GLN:NE2	2.08	0.65
1:A:652:ASP:H	3:A:1255:GBL:HBC2	1.60	0.65
1:A:786:PHE:CD2	1:A:799:VAL:HG21	2.31	0.65
1:A:1094:SER:O	1:A:1096:ASP:N	2.30	0.65
1:A:1198:GLY:O	1:A:1219:THR:HG22	1.97	0.65
1:A:1042:ALA:HB1	1:A:1044:GLN:HG3	1.77	0.65
1:A:679:LYS:HD2	1:A:699:SER:O	1.96	0.64
1:A:966:CYS:SG	1:A:979:GLY:HA3	2.37	0.64
1:A:1097:ALA:O	1:A:1098:THR:HB	1.97	0.64
1:A:382:TYR:CE2	1:A:414:ILE:HD13	2.32	0.64
1:A:785:ARG:HD2	1:A:785:ARG:N	2.13	0.64
1:A:650:LEU:O	1:A:651:LEU:HD23	1.98	0.64
1:A:107:THR:C	1:A:109:PHE:H	2.01	0.64
1:A:491:MET:HE1	1:A:503:LEU:HD22	1.79	0.64
1:A:505:PHE:HZ	1:A:534:ASP:HB2	1.62	0.64
1:A:946:LEU:HD12	1:A:959:LEU:HB2	1.79	0.63
1:A:869:ILE:O	1:A:870:ASP:HB3	1.97	0.63
1:A:767:LEU:HD22	1:A:768:ARG:H	1.61	0.63
1:A:1137:LEU:O	1:A:1138:ASP:HB2	1.97	0.63
1:A:1065:GLY:HA3	1:A:1084:HIS:O	1.98	0.63
1:A:902:ASP:C	1:A:904:GLN:H	2.01	0.63
1:A:487:LEU:HG	1:A:491:MET:HE3	1.80	0.63
1:A:220:ILE:H	1:A:220:ILE:CD1	2.11	0.62
1:A:546:GLU:HG2	1:A:612:ARG:HH22	1.63	0.62
1:A:353:ILE:O	1:A:354:ARG:HB2	1.99	0.62
1:A:1123:LEU:HB3	1:A:1154:TRP:CZ3	2.34	0.62
1:A:1111:ILE:HD13	1:A:1112:TRP:N	2.14	0.62
1:A:1001:GLY:CA	1:A:1028:GLN:HE22	2.08	0.62
1:A:760:SER:HG	1:A:770:TRP:HZ3	1.48	0.62
1:A:692:VAL:HG12	1:A:692:VAL:O	1.99	0.62
1:A:1091:CYS:HB2	1:A:1102:SER:O	2.00	0.62
1:A:470:PRO:O	1:A:473:LEU:HD11	2.00	0.62
1:A:1012:THR:HA	1:A:1052:LEU:HD21	1.82	0.62

Continued on next page...

Continued from previous page...

Atom-1	Atom-2	Interatomic distance (Å)	Clash overlap (Å)
1:A:1016:LYS:HG2	1:A:1033:GLN:OE1	1.99	0.62
1:A:704:CYS:SG	1:A:749:CYS:N	2.72	0.62
1:A:802:LYS:O	1:A:803:CYS:C	2.38	0.62
1:A:1248:LEU:HD23	1:A:1249:GLU:H	1.65	0.62
1:A:270:THR:O	1:A:273:VAL:HG12	2.00	0.61
1:A:378:ASP:OD2	1:A:379:ILE:HG23	2.00	0.61
1:A:1248:LEU:HD22	1:A:1249:GLU:HG2	1.80	0.61
1:A:603:ILE:O	1:A:604:LYS:HB3	1.99	0.61
1:A:1183:ASP:OD1	1:A:1224:ILE:HG22	2.01	0.61
1:A:1017:THR:HA	1:A:1031:ASN:HA	1.81	0.61
1:A:1093:ILE:HG13	1:A:1095:SER:H	1.66	0.61
1:A:1163:HIS:CD2	1:A:1207:THR:HA	2.34	0.61
1:A:819:ASN:O	1:A:837:THR:HG22	2.00	0.61
1:A:274:MET:CE	1:A:275:GLY:H	2.14	0.61
1:A:814:ILE:HD11	1:A:848:PHE:HB2	1.82	0.61
1:A:545:GLN:HG2	1:A:612:ARG:CD	2.31	0.61
1:A:1107:LYS:CG	1:A:1108:THR:HG23	2.26	0.61
1:A:760:SER:CB	1:A:770:TRP:HZ3	2.14	0.61
1:A:262:LEU:HD23	1:A:262:LEU:H	1.66	0.60
1:A:1042:ALA:HB1	1:A:1044:GLN:CG	2.31	0.60
1:A:605:ASN:O	1:A:606:LEU:C	2.40	0.60
1:A:558:GLN:HG2	1:A:560:PHE:CE1	2.36	0.60
1:A:762:SER:OG	1:A:763:ALA:N	2.34	0.60
1:A:1167:PRO:HD2	1:A:1203:TRP:HH2	1.65	0.60
1:A:1072:VAL:HG12	1:A:1073:ILE:N	2.17	0.60
1:A:1107:LYS:HB3	1:A:1107:LYS:HZ2	1.67	0.60
1:A:153:TYR:CD1	1:A:267:LYS:HB3	2.35	0.60
1:A:980:ASP:OD1	1:A:982:ASP:N	2.33	0.60
1:A:611:VAL:HG12	1:A:613:PRO:HD3	1.82	0.60
1:A:216:LEU:N	1:A:216:LEU:HD12	2.16	0.60
1:A:426:CYS:HB3	1:A:435:TYR:CD1	2.36	0.60
1:A:531:HIS:CD2	1:A:532:ILE:HG22	2.36	0.60
1:A:1146:ASP:CB	1:A:1150:GLU:HB3	2.32	0.60
1:A:762:SER:O	1:A:801:VAL:HG22	2.02	0.60
1:A:245:VAL:HG11	1:A:251:LEU:HD13	1.84	0.60
1:A:968:CYS:SG	1:A:1010:GLN:HA	2.42	0.60
1:A:1221:LEU:C	1:A:1222:LYS:HG3	2.22	0.60
1:A:638:THR:HB	1:A:653:ILE:O	2.02	0.60
1:A:1231:ARG:HG3	1:A:1247:VAL:HB	1.84	0.60
1:A:1012:THR:HG1	1:A:1017:THR:HB	1.67	0.59
1:A:361:TYR:O	1:A:362:GLU:C	2.39	0.59

Continued on next page...

Continued from previous page...

Atom-1	Atom-2	Interatomic distance (Å)	Clash overlap (Å)
1:A:424:LEU:HD12	1:A:437:LEU:HD13	1.84	0.59
1:A:330:LEU:HD11	1:A:370:ILE:CG2	2.33	0.59
1:A:785:ARG:HG3	1:A:785:ARG:NH1	2.05	0.59
1:A:659:GLU:O	1:A:676:SER:HB2	2.02	0.59
1:A:248:PRO:HB3	1:A:272:SER:HB3	1.84	0.59
1:A:761:CYS:HB3	1:A:801:VAL:HG23	1.83	0.59
1:A:290:LYS:HD3	1:A:293:GLU:OE1	2.02	0.59
1:A:723:PHE:N	1:A:723:PHE:HD1	2.00	0.59
1:A:1090:SER:O	1:A:1091:CYS:HB3	2.02	0.59
1:A:803:CYS:SG	1:A:846:CYS:O	2.61	0.59
1:A:497:HIS:ND1	1:A:532:ILE:HD12	2.18	0.59
1:A:1072:VAL:C	1:A:1073:ILE:HG13	2.23	0.59
1:A:153:TYR:CZ	1:A:281:PRO:HG3	2.37	0.59
1:A:460:MET:O	1:A:461:VAL:HG13	2.02	0.59
1:A:130:LYS:HD2	1:A:131:LYS:H	1.67	0.59
1:A:951:GLY:O	1:A:952:LYS:HB3	2.03	0.59
1:A:656:HIS:HE1	1:A:674:THR:OG1	1.85	0.58
1:A:608:ARG:NH2	1:A:908:VAL:HG11	2.18	0.58
1:A:514:THR:HG21	1:A:555:LEU:HD23	1.83	0.58
1:A:924:GLN:CB	1:A:1222:LYS:HE3	2.33	0.58
1:A:623:PHE:CD2	1:A:891:SER:HA	2.38	0.58
1:A:1191:LYS:HA	1:A:1205:VAL:HG21	1.84	0.58
1:A:1029:VAL:HB	1:A:1038:VAL:HB	1.84	0.58
1:A:768:ARG:HB2	1:A:770:TRP:CZ3	2.39	0.58
1:A:942:ASN:N	1:A:942:ASN:HD22	1.99	0.58
1:A:910:GLU:HG3	1:A:913:LYS:HB3	1.84	0.58
1:A:128:THR:OG1	1:A:130:LYS:HE3	2.04	0.58
1:A:938:LEU:HD11	1:A:976:VAL:HB	1.86	0.58
1:A:1185:CYS:SG	1:A:1226:VAL:HG21	2.44	0.58
1:A:713:HIS:CD2	1:A:713:HIS:N	2.64	0.58
1:A:1160:GLN:C	1:A:1161:LEU:HD12	2.24	0.57
1:A:237:ARG:HH11	1:A:237:ARG:HG2	1.69	0.57
1:A:723:PHE:N	1:A:723:PHE:CD1	2.72	0.57
1:A:1088:VAL:HA	1:A:1105:ALA:CB	2.35	0.57
1:A:1151:ILE:O	1:A:1151:ILE:HG12	2.05	0.57
1:A:603:ILE:HG22	1:A:604:LYS:N	2.19	0.57
1:A:866:LEU:N	1:A:866:LEU:HD23	2.19	0.57
1:A:1019:ILE:HD12	1:A:1019:ILE:N	2.20	0.57
1:A:228:ARG:NH2	1:A:229:VAL:HG23	2.19	0.57
1:A:1019:ILE:HG21	1:A:1058:LEU:HD11	1.84	0.57
1:A:1167:PRO:HD2	1:A:1203:TRP:CH2	2.38	0.57

Continued on next page...

Continued from previous page...

Atom-1	Atom-2	Interatomic distance (Å)	Clash overlap (Å)
1:A:924:GLN:HB2	1:A:1222:LYS:HE3	1.86	0.57
1:A:803:CYS:SG	1:A:846:CYS:C	2.83	0.57
1:A:1046:THR:HB	1:A:1063:PHE:CZ	2.40	0.57
1:A:1107:LYS:HG2	1:A:1108:THR:CG2	2.27	0.57
1:A:603:ILE:O	1:A:604:LYS:CB	2.52	0.57
1:A:692:VAL:O	1:A:693:HIS:CB	2.53	0.56
1:A:1205:VAL:O	1:A:1206:ALA:HB3	2.05	0.56
1:A:989:GLU:HG2	1:A:995:VAL:O	2.04	0.56
1:A:866:LEU:HD23	1:A:866:LEU:H	1.70	0.56
1:A:1031:ASN:HD22	1:A:1031:ASN:C	2.07	0.56
1:A:475:PRO:HA	1:A:480:CYS:SG	2.45	0.56
1:A:695:TYR:HB3	1:A:728:TRP:CZ3	2.40	0.56
1:A:389:LEU:C	1:A:389:LEU:HD23	2.25	0.56
1:A:1063:PHE:HA	1:A:1087:THR:HA	1.87	0.56
1:A:368:MET:O	1:A:372:VAL:HG23	2.05	0.56
1:A:1182:THR:O	1:A:1183:ASP:HB2	2.05	0.56
1:A:603:ILE:HG22	1:A:604:LYS:H	1.71	0.56
1:A:460:MET:O	1:A:461:VAL:HG22	2.05	0.56
1:A:130:LYS:N	1:A:130:LYS:HD2	2.21	0.56
1:A:378:ASP:OD2	1:A:379:ILE:N	2.37	0.56
1:A:996:PHE:HD1	1:A:997:SER:N	2.04	0.56
1:A:153:TYR:CE2	1:A:281:PRO:HG3	2.40	0.56
1:A:785:ARG:CD	1:A:785:ARG:N	2.69	0.56
1:A:1132:CYS:SG	1:A:1145:GLY:HA3	2.46	0.56
1:A:1106:ASP:O	1:A:1107:LYS:CB	2.54	0.55
1:A:941:ASP:OD1	1:A:942:ASN:ND2	2.39	0.55
1:A:700:GLU:H	1:A:722:ASP:HB3	1.71	0.55
1:A:214:GLN:O	1:A:215:ARG:HB3	2.06	0.55
1:A:961:GLU:O	1:A:963:GLN:N	2.35	0.55
1:A:141:TRP:C	1:A:143:LEU:H	2.10	0.55
1:A:946:LEU:CD1	1:A:959:LEU:HB2	2.36	0.55
1:A:1187:SER:OG	1:A:1188:PRO:HD2	2.07	0.55
1:A:448:LYS:NZ	1:A:449:ASN:HD21	2.04	0.55
1:A:725:LEU:HD11	1:A:760:SER:HB2	1.89	0.55
1:A:470:PRO:HB3	1:A:503:LEU:CD1	2.35	0.55
1:A:545:GLN:HG2	1:A:612:ARG:HD2	1.87	0.55
1:A:1211:SER:O	1:A:1213:THR:N	2.39	0.55
1:A:130:LYS:HD2	1:A:131:LYS:HD3	1.89	0.55
1:A:949:ILE:HA	1:A:956:ILE:HD12	1.89	0.55
1:A:214:GLN:HG2	1:A:215:ARG:H	1.71	0.55
1:A:926:ILE:HG22	1:A:939:ALA:CB	2.36	0.55

Continued on next page...

Continued from previous page...

Atom-1	Atom-2	Interatomic distance (Å)	Clash overlap (Å)
1:A:501:CYS:HA	1:A:533:LEU:HD11	1.89	0.55
1:A:404:TRP:O	1:A:406:LEU:HG	2.07	0.55
1:A:209:GLU:O	1:A:210:GLU:HB2	2.06	0.55
1:A:785:ARG:NH1	1:A:785:ARG:CG	2.62	0.55
1:A:874:LYS:HD2	1:A:943:ILE:CD1	2.37	0.55
1:A:673:ALA:HA	1:A:682:LYS:O	2.06	0.55
1:A:1107:LYS:HB2	1:A:1107:LYS:HZ2	1.70	0.54
1:A:736:ARG:CG	1:A:737:ASN:HD22	2.20	0.54
1:A:971:PRO:O	1:A:972:HIS:CB	2.52	0.54
1:A:274:MET:HE3	1:A:275:GLY:H	1.72	0.54
1:A:1105:ALA:O	1:A:1106:ASP:C	2.45	0.54
1:A:501:CYS:SG	1:A:533:LEU:HD12	2.47	0.54
1:A:134:HIS:HA	1:A:137:GLN:HE21	1.72	0.54
1:A:575:GLU:OE1	1:A:579:GLN:HG3	2.07	0.54
1:A:607:SER:HB3	1:A:909:TRP:CZ3	2.41	0.54
1:A:636:ASP:OD2	1:A:638:THR:HG23	2.08	0.54
1:A:184:TRP:CE3	1:A:241:ILE:HG21	2.43	0.54
1:A:1198:GLY:CA	1:A:1219:THR:HG22	2.37	0.54
1:A:551:ASN:ND2	1:A:566:LEU:HD22	2.23	0.54
1:A:1231:ARG:O	1:A:1246:GLN:HG3	2.08	0.54
1:A:760:SER:CB	1:A:770:TRP:CZ3	2.90	0.54
1:A:1063:PHE:CA	1:A:1087:THR:HA	2.38	0.54
1:A:149:TRP:CZ3	1:A:260:ILE:HD12	2.43	0.54
1:A:1163:HIS:HD2	1:A:1207:THR:HA	1.71	0.53
1:A:233:ARG:C	1:A:235:HIS:H	2.12	0.53
1:A:1029:VAL:HG11	1:A:1072:VAL:CG1	2.32	0.53
1:A:1211:SER:C	1:A:1213:THR:N	2.62	0.53
1:A:232:LEU:O	1:A:233:ARG:HB2	2.08	0.53
1:A:992:ASN:OD1	1:A:994:ARG:HB2	2.09	0.53
1:A:405:ASP:O	1:A:406:LEU:HD23	2.08	0.53
1:A:736:ARG:HG3	1:A:737:ASN:ND2	2.24	0.53
1:A:1227:SER:HB2	1:A:1228:PRO:CD	2.39	0.53
1:A:938:LEU:HD22	1:A:967:CYS:SG	2.49	0.53
1:A:903:ASP:O	1:A:905:THR:HG23	2.08	0.53
1:A:743:THR:HB	1:A:764:ASP:HB2	1.91	0.53
1:A:604:LYS:HD3	1:A:606:LEU:HD21	1.90	0.53
1:A:309:GLU:HG2	1:A:339:ALA:HA	1.90	0.53
1:A:607:SER:HB3	1:A:909:TRP:CH2	2.43	0.53
1:A:874:LYS:HD2	1:A:943:ILE:HD11	1.91	0.53
1:A:1161:LEU:O	1:A:1162:LEU:O	2.27	0.53
1:A:1007:ARG:HH11	1:A:1007:ARG:HG3	1.73	0.53

Continued on next page...

Continued from previous page...

Atom-1	Atom-2	Interatomic distance (Å)	Clash overlap (Å)
1:A:1048:LYS:HD2	1:A:1061:TRP:HZ3	1.74	0.53
1:A:1138:ASP:O	1:A:1139:GLY:C	2.48	0.53
1:A:117:GLY:HA3	1:A:182:VAL:O	2.09	0.53
1:A:850:PRO:HG2	1:A:851:TYR:CD2	2.44	0.52
1:A:849:SER:OG	1:A:850:PRO:HD2	2.08	0.52
1:A:837:THR:HG23	1:A:838:GLY:N	2.24	0.52
1:A:330:LEU:HD11	1:A:370:ILE:HG22	1.92	0.52
1:A:1048:LYS:H	1:A:1062:SER:HA	1.73	0.52
1:A:216:LEU:HB3	1:A:217:PRO:HD2	1.92	0.52
1:A:675:CYS:CB	1:A:702:VAL:HG22	2.35	0.52
1:A:743:THR:HB	1:A:764:ASP:CB	2.39	0.52
1:A:545:GLN:HG2	1:A:612:ARG:NE	2.25	0.52
1:A:461:VAL:CG2	1:A:462:THR:N	2.73	0.52
1:A:1058:LEU:O	1:A:1058:LEU:HD23	2.09	0.52
1:A:453:LEU:HD13	3:A:1251:GBL:HBC1	1.90	0.52
1:A:1236:VAL:HG22	1:A:1242:LEU:HD23	1.90	0.52
1:A:1121:HIS:CD2	1:A:1159:GLY:HA3	2.45	0.52
1:A:1140:ILE:C	1:A:1156:VAL:HG23	2.31	0.52
1:A:1042:ALA:HB1	1:A:1044:GLN:OE1	2.10	0.52
1:A:1094:SER:HB3	1:A:1100:PHE:HB2	1.91	0.51
1:A:736:ARG:O	1:A:736:ARG:HG3	2.10	0.51
1:A:1141:LEU:N	1:A:1141:LEU:HD22	2.25	0.51
1:A:336:ASN:O	1:A:338:TRP:N	2.40	0.51
1:A:153:TYR:OH	1:A:281:PRO:HG3	2.10	0.51
1:A:1217:ASN:N	1:A:1217:ASN:HD22	2.07	0.51
1:A:952:LYS:HG3	1:A:952:LYS:O	2.10	0.51
1:A:974:GLU:CA	1:A:991:PRO:HD3	2.34	0.51
1:A:491:MET:HE3	1:A:503:LEU:HD22	1.91	0.51
1:A:1083:CYS:HG	1:A:1112:TRP:HZ2	1.58	0.51
1:A:534:ASP:HB2	1:A:541:CYS:HB2	1.90	0.51
1:A:409:GLU:CD	1:A:409:GLU:H	2.14	0.51
1:A:239:LEU:HD12	1:A:259:GLN:O	2.11	0.51
1:A:1053:LEU:HB3	1:A:1057:ARG:O	2.10	0.51
1:A:1058:LEU:C	1:A:1058:LEU:HD23	2.31	0.51
1:A:854:LEU:HD23	1:A:867:TRP:O	2.11	0.51
1:A:511:LYS:HD2	1:A:563:ILE:HG21	1.93	0.51
1:A:309:GLU:HB3	1:A:342:LEU:HD22	1.93	0.51
1:A:1084:HIS:NE2	1:A:1103:THR:OG1	2.36	0.51
1:A:1016:LYS:HD3	1:A:1033:GLN:OE1	2.11	0.51
1:A:581:LYS:O	1:A:584:ALA:HB3	2.10	0.51
1:A:862:TYR:HB3	1:A:883:SER:O	2.10	0.51

Continued on next page...

Continued from previous page...

Atom-1	Atom-2	Interatomic distance (Å)	Clash overlap (Å)
1:A:1019:ILE:HD12	1:A:1019:ILE:H	1.76	0.51
1:A:114:LEU:HD21	1:A:168:VAL:O	2.10	0.51
1:A:226:ARG:O	1:A:230:LEU:HG	2.11	0.51
1:A:1160:GLN:HE21	1:A:1160:GLN:N	2.09	0.50
1:A:706:HIS:CE1	1:A:751:PHE:H	2.29	0.50
1:A:628:GLN:OE1	1:A:628:GLN:HA	2.11	0.50
1:A:1054:GLN:OE1	1:A:1054:GLN:HA	2.11	0.50
1:A:149:TRP:CE2	1:A:273:VAL:HG21	2.45	0.50
1:A:460:MET:C	1:A:461:VAL:HG13	2.31	0.50
1:A:214:GLN:HG2	1:A:215:ARG:N	2.26	0.50
1:A:535:GLU:OE1	1:A:535:GLU:HA	2.11	0.50
1:A:337:ARG:HG3	1:A:341:TYR:CE2	2.45	0.50
1:A:1086:GLY:O	1:A:1087:THR:O	2.29	0.50
1:A:718:THR:O	1:A:725:LEU:HD23	2.11	0.50
1:A:950:ALA:O	1:A:953:THR:O	2.29	0.50
1:A:1067:VAL:HG11	1:A:1112:TRP:HH2	1.76	0.50
1:A:229:VAL:HG12	1:A:230:LEU:N	2.26	0.50
1:A:814:ILE:CG2	1:A:823:LEU:HD13	2.36	0.50
1:A:1130:VAL:HA	1:A:1145:GLY:O	2.10	0.50
1:A:1149:GLY:CA	1:A:1177:HIS:HB2	2.41	0.50
1:A:821:VAL:O	1:A:822:LEU:HD12	2.11	0.50
1:A:506:SER:O	1:A:510:ILE:HG12	2.11	0.50
1:A:236:PRO:O	1:A:237:ARG:HB3	2.11	0.50
1:A:586:GLN:O	1:A:587:GLU:HB2	2.12	0.50
1:A:1227:SER:HB2	1:A:1228:PRO:HD2	1.94	0.50
1:A:1082:THR:HG22	1:A:1082:THR:O	2.12	0.50
1:A:1191:LYS:O	1:A:1205:VAL:HG22	2.11	0.50
1:A:1137:LEU:O	1:A:1138:ASP:CB	2.60	0.50
1:A:486:PHE:O	1:A:489:TYR:HB3	2.11	0.50
1:A:384:THR:HG23	1:A:449:ASN:OD1	2.11	0.49
1:A:949:ILE:HG12	1:A:956:ILE:HD11	1.92	0.49
1:A:215:ARG:HH12	1:A:557:ARG:HD3	1.77	0.49
1:A:742:HIS:NE2	1:A:760:SER:OG	2.45	0.49
1:A:1177:HIS:CD2	1:A:1178:GLY:H	2.29	0.49
1:A:376:ARG:CB	1:A:376:ARG:NH1	2.73	0.49
1:A:819:ASN:HD21	1:A:840:HIS:CA	2.24	0.49
1:A:869:ILE:O	1:A:870:ASP:CB	2.61	0.49
1:A:881:HIS:CD2	1:A:899:THR:HG21	2.48	0.49
1:A:826:ILE:O	1:A:826:ILE:HG12	2.11	0.49
1:A:1116:LEU:C	1:A:1118:SER:H	2.15	0.49
1:A:996:PHE:CD1	1:A:997:SER:N	2.80	0.49

Continued on next page...

Continued from previous page...

Atom-1	Atom-2	Interatomic distance (Å)	Clash overlap (Å)
1:A:604:LYS:C	1:A:606:LEU:H	2.15	0.49
1:A:785:ARG:HH22	1:A:831:LEU:HB2	1.76	0.49
1:A:722:ASP:O	1:A:723:PHE:HB2	2.13	0.49
1:A:811:ASP:O	1:A:826:ILE:HG22	2.12	0.49
1:A:714:LEU:HD22	1:A:730:LEU:HB2	1.94	0.49
1:A:299:VAL:HG11	1:A:338:TRP:HZ2	1.78	0.49
1:A:426:CYS:HB2	1:A:434:CYS:O	2.13	0.49
1:A:652:ASP:N	3:A:1255:GBL:HBC2	2.26	0.49
1:A:477:GLN:HB3	1:A:479:ASP:OD1	2.13	0.49
1:A:106:ILE:CG2	1:A:111:ARG:HG3	2.43	0.48
1:A:626:ASP:OD1	1:A:628:GLN:HB2	2.13	0.48
1:A:633:CYS:HB2	1:A:660:VAL:CG1	2.42	0.48
1:A:1046:THR:O	1:A:1062:SER:HB2	2.13	0.48
1:A:419:VAL:HA	1:A:424:LEU:O	2.13	0.48
1:A:802:LYS:HB2	1:A:802:LYS:NZ	2.28	0.48
1:A:898:LEU:HD12	1:A:898:LEU:C	2.34	0.48
1:A:944:ARG:HB3	1:A:958:TYR:OH	2.12	0.48
1:A:1072:VAL:C	1:A:1074:THR:H	2.16	0.48
1:A:868:ASN:HB2	1:A:875:VAL:CG2	2.44	0.48
1:A:970:SER:HB3	1:A:1011:PHE:CE2	2.49	0.48
1:A:582:LEU:HD22	1:A:586:GLN:HG3	1.94	0.48
1:A:903:ASP:OD2	1:A:903:ASP:C	2.52	0.48
1:A:838:GLY:O	1:A:839:HIS:C	2.51	0.48
1:A:173:LEU:O	1:A:177:CYS:HB3	2.14	0.48
1:A:870:ASP:OD1	1:A:871:SER:N	2.47	0.48
1:A:215:ARG:HD2	1:A:556:GLY:O	2.14	0.48
1:A:705:CYS:HA	1:A:717:ALA:O	2.13	0.48
1:A:804:CYS:SG	1:A:804:CYS:O	2.72	0.48
1:A:1191:LYS:HA	1:A:1205:VAL:CG2	2.44	0.48
1:A:228:ARG:HH22	1:A:229:VAL:HG23	1.79	0.48
1:A:1146:ASP:CG	1:A:1150:GLU:HB3	2.33	0.48
1:A:228:ARG:HB3	1:A:228:ARG:CZ	2.39	0.48
1:A:974:GLU:O	1:A:990:LEU:N	2.46	0.48
1:A:1151:ILE:H	1:A:1166:ALA:HB2	1.79	0.48
1:A:704:CYS:HB2	1:A:748:HIS:HA	1.96	0.48
1:A:1063:PHE:CB	1:A:1087:THR:HG23	2.39	0.48
1:A:1108:THR:OG1	1:A:1109:ALA:N	2.45	0.48
1:A:1210:SER:OG	1:A:1211:SER:N	2.47	0.48
1:A:140:LEU:HD23	1:A:150:VAL:HG21	1.96	0.48
1:A:1123:LEU:HB3	1:A:1154:TRP:CH2	2.50	0.47
1:A:555:LEU:HD12	1:A:555:LEU:N	2.29	0.47

Continued on next page...

Continued from previous page...

Atom-1	Atom-2	Interatomic distance (Å)	Clash overlap (Å)
1:A:891:SER:HB2	1:A:892:PRO:HD2	1.95	0.47
1:A:215:ARG:NH1	1:A:557:ARG:HD3	2.28	0.47
1:A:633:CYS:HB2	1:A:660:VAL:HB	1.96	0.47
1:A:639:LEU:HD22	1:A:640:GLN:N	2.29	0.47
1:A:507:LEU:HD22	1:A:563:ILE:HG13	1.95	0.47
1:A:496:MET:HB3	1:A:499:GLU:OE1	2.13	0.47
1:A:448:LYS:HZ3	1:A:449:ASN:HD21	1.63	0.47
1:A:1151:ILE:HD11	1:A:1193:LEU:HD21	1.95	0.47
1:A:604:LYS:HE2	1:A:606:LEU:HD13	1.97	0.47
1:A:121:GLN:CD	1:A:121:GLN:H	2.17	0.47
1:A:1050:PHE:CD1	1:A:1050:PHE:C	2.88	0.47
1:A:1086:GLY:O	1:A:1087:THR:C	2.53	0.47
1:A:354:ARG:O	1:A:355:LYS:C	2.53	0.47
1:A:551:ASN:HD21	3:A:1254:GBL:HGC2	1.79	0.47
1:A:320:SER:O	1:A:324:VAL:HG23	2.15	0.47
1:A:1206:ALA:O	1:A:1207:THR:O	2.33	0.47
1:A:1140:ILE:CG1	1:A:1156:VAL:HB	2.40	0.47
1:A:604:LYS:O	1:A:606:LEU:HD22	2.15	0.47
1:A:799:VAL:HG22	1:A:818:LYS:HD2	1.95	0.47
1:A:692:VAL:O	1:A:693:HIS:HB3	2.15	0.47
1:A:1229:ASP:OD1	1:A:1231:ARG:HB3	2.14	0.47
1:A:514:THR:HA	1:A:518:GLY:O	2.14	0.47
1:A:184:TRP:O	1:A:205:ARG:NH2	2.48	0.47
1:A:785:ARG:NH1	1:A:831:LEU:HD22	2.30	0.47
1:A:778:ARG:HD3	4:A:1315:HOH:O	2.13	0.47
1:A:1155:ASN:HD21	1:A:1160:GLN:CD	2.19	0.47
1:A:1107:LYS:CB	1:A:1107:LYS:NZ	2.73	0.47
1:A:934:GLU:CG	1:A:935:THR:H	2.25	0.47
1:A:970:SER:O	1:A:971:PRO:C	2.52	0.46
1:A:675:CYS:HB2	1:A:702:VAL:CG2	2.38	0.46
1:A:1040:LEU:HD22	1:A:1070:TRP:CE3	2.50	0.46
1:A:1097:ALA:O	1:A:1098:THR:CB	2.62	0.46
1:A:303:LYS:HA	1:A:306:LEU:HD12	1.96	0.46
1:A:415:LEU:O	1:A:419:VAL:HG23	2.15	0.46
1:A:1049:ASP:HB3	1:A:1061:TRP:CZ2	2.50	0.46
1:A:718:THR:O	1:A:725:LEU:HA	2.15	0.46
1:A:151:THR:HG1	1:A:262:LEU:HD21	1.80	0.46
1:A:551:ASN:O	1:A:555:LEU:HD13	2.15	0.46
1:A:1134:ALA:O	1:A:1142:LEU:HD22	2.15	0.46
1:A:903:ASP:C	1:A:904:GLN:HG2	2.36	0.46
1:A:438:HIS:HB3	1:A:441:GLN:HG3	1.98	0.46

Continued on next page...

Continued from previous page...

Atom-1	Atom-2	Interatomic distance (Å)	Clash overlap (Å)
1:A:727:LEU:HD21	1:A:758:LEU:HD12	1.97	0.46
1:A:629:ARG:NH2	1:A:669:ASP:HB3	2.30	0.46
1:A:1121:HIS:CG	1:A:1159:GLY:HA3	2.51	0.46
1:A:107:THR:C	1:A:109:PHE:N	2.69	0.46
1:A:744:ASN:CG	1:A:745:SER:H	2.18	0.46
1:A:237:ARG:NH1	1:A:237:ARG:HG2	2.31	0.46
1:A:918:SER:OG	1:A:920:ILE:HG23	2.15	0.46
1:A:1221:LEU:HD23	1:A:1237:ASP:HA	1.98	0.46
1:A:529:TYR:O	1:A:533:LEU:CB	2.58	0.46
1:A:656:HIS:HD2	1:A:678:ASP:OD2	1.99	0.46
1:A:708:THR:CG2	1:A:715:LEU:HB2	2.45	0.46
1:A:1046:THR:HB	1:A:1063:PHE:CE2	2.51	0.46
1:A:1107:LYS:HB3	1:A:1107:LYS:NZ	2.31	0.46
1:A:782:ASN:ND2	1:A:784:LYS:HB3	2.27	0.46
1:A:1042:ALA:C	1:A:1044:GLN:H	2.19	0.46
1:A:1152:ARG:HA	1:A:1164:SER:HA	1.98	0.46
1:A:1007:ARG:NH1	1:A:1007:ARG:HG3	2.31	0.46
1:A:742:HIS:CD2	1:A:770:TRP:HH2	2.34	0.46
1:A:783:VAL:HG13	1:A:785:ARG:HD3	1.98	0.45
1:A:1102:SER:OG	1:A:1111:ILE:HA	2.15	0.45
1:A:1010:GLN:HG2	1:A:1011:PHE:O	2.16	0.45
1:A:1008:HIS:HB2	1:A:1049:ASP:OD1	2.16	0.45
1:A:844:GLN:NE2	1:A:861:GLN:H	2.14	0.45
1:A:1149:GLY:HA2	1:A:1181:VAL:CG2	2.47	0.45
1:A:140:LEU:HD12	1:A:173:LEU:HD21	1.99	0.45
1:A:572:GLU:HA	1:A:577:TYR:CD1	2.52	0.45
1:A:739:MET:HE3	1:A:758:LEU:HD13	1.99	0.45
1:A:990:LEU:O	1:A:991:PRO:C	2.52	0.45
1:A:587:GLU:O	1:A:588:GLY:C	2.53	0.45
1:A:214:GLN:O	1:A:215:ARG:CB	2.65	0.45
1:A:1071:ASN:OD1	1:A:1072:VAL:O	2.34	0.45
1:A:844:GLN:HG2	1:A:859:LEU:O	2.17	0.45
1:A:902:ASP:C	1:A:904:GLN:N	2.69	0.45
1:A:140:LEU:O	1:A:143:LEU:HB2	2.16	0.45
1:A:349:GLN:HB2	1:A:349:GLN:HE21	1.62	0.45
1:A:158:CYS:SG	1:A:160:LYS:HG3	2.57	0.45
1:A:1089:LEU:HD12	1:A:1106:ASP:H	1.82	0.45
1:A:207:ASP:OD2	1:A:230:LEU:HD11	2.16	0.45
1:A:921:VAL:C	1:A:922:LEU:HD13	2.36	0.45
1:A:594:TYR:HB2	1:A:1248:LEU:HD12	1.98	0.45
1:A:344:GLN:HA	1:A:344:GLN:OE1	2.16	0.45

Continued on next page...

Continued from previous page...

Atom-1	Atom-2	Interatomic distance (Å)	Clash overlap (Å)
1:A:230:LEU:O	1:A:235:HIS:HB2	2.16	0.45
1:A:974:GLU:HG2	1:A:975:TYR:N	2.32	0.45
1:A:625:GLN:OE1	1:A:625:GLN:HA	2.17	0.45
1:A:396:PRO:HG2	1:A:399:VAL:CG2	2.39	0.45
1:A:784:LYS:O	1:A:784:LYS:HG2	2.17	0.45
1:A:114:LEU:HD22	1:A:119:VAL:HG21	1.97	0.45
1:A:464:PHE:HD2	1:A:483:TRP:CE2	2.35	0.45
1:A:575:GLU:HA	1:A:578:ARG:HE	1.82	0.45
1:A:1126:HIS:CD2	1:A:1130:VAL:HG22	2.50	0.45
1:A:1042:ALA:C	1:A:1044:GLN:N	2.70	0.45
1:A:804:CYS:CB	1:A:815:VAL:HG12	2.47	0.45
1:A:804:CYS:HB2	1:A:815:VAL:HG12	1.97	0.45
1:A:1024:ASP:OD2	1:A:1026:VAL:HG12	2.16	0.45
1:A:410:GLU:O	1:A:411:VAL:C	2.55	0.45
1:A:1128:GLY:O	1:A:1129:CYS:CB	2.55	0.45
1:A:844:GLN:HG2	1:A:844:GLN:H	1.52	0.45
1:A:278:HIS:O	1:A:279:VAL:HG13	2.16	0.45
1:A:497:HIS:ND1	1:A:532:ILE:CD1	2.80	0.45
1:A:1236:VAL:CG2	1:A:1242:LEU:HD23	2.47	0.45
1:A:129:ARG:CZ	1:A:286:LEU:HD21	2.47	0.45
1:A:1063:PHE:CB	1:A:1087:THR:HA	2.47	0.44
1:A:942:ASN:ND2	1:A:942:ASN:H	2.08	0.44
1:A:859:LEU:HG	1:A:860:SER:N	2.32	0.44
1:A:143:LEU:O	1:A:144:ASN:HB2	2.17	0.44
1:A:184:TRP:HA	1:A:241:ILE:HB	1.98	0.44
1:A:160:LYS:N	2:A:1250:ADP:O1B	2.51	0.44
1:A:469:GLN:HB2	1:A:472:THR:OG1	2.17	0.44
1:A:395:VAL:O	1:A:434:CYS:CA	2.63	0.44
1:A:127:VAL:HG23	1:A:127:VAL:O	2.17	0.44
1:A:1121:HIS:CB	1:A:1158:ASP:O	2.66	0.44
1:A:831:LEU:HD11	1:A:833:ALA:O	2.16	0.44
1:A:921:VAL:O	1:A:942:ASN:ND2	2.50	0.44
1:A:861:GLN:O	1:A:863:CYS:N	2.51	0.44
1:A:832:LEU:N	1:A:832:LEU:HD12	2.31	0.44
1:A:666:SER:HA	1:A:707:PHE:CG	2.51	0.44
1:A:1007:ARG:HB3	1:A:1008:HIS:H	1.62	0.44
1:A:767:LEU:O	1:A:768:ARG:HG2	2.17	0.44
1:A:973:LEU:O	1:A:974:GLU:HG2	2.17	0.44
1:A:759:ALA:HB2	1:A:806:TRP:CZ2	2.53	0.44
1:A:806:TRP:HZ3	1:A:826:ILE:HD12	1.82	0.44
1:A:233:ARG:O	1:A:234:LYS:HB3	2.18	0.44

Continued on next page...

Continued from previous page...

Atom-1	Atom-2	Interatomic distance (Å)	Clash overlap (Å)
1:A:587:GLU:HG2	1:A:590:THR:OG1	2.17	0.44
1:A:926:ILE:HG22	1:A:939:ALA:HB1	1.98	0.44
1:A:926:ILE:HG13	1:A:926:ILE:O	2.15	0.44
1:A:1118:SER:OG	1:A:1119:PRO:HD2	2.17	0.44
1:A:402:VAL:O	1:A:463:GLN:HB3	2.16	0.44
1:A:539:ALA:C	1:A:541:CYS:N	2.70	0.44
1:A:739:MET:HE3	1:A:758:LEU:CD1	2.48	0.44
1:A:1219:THR:HB	1:A:1220:ASN:H	1.67	0.44
1:A:928:VAL:HG22	1:A:937:VAL:HG22	2.00	0.44
1:A:1053:LEU:HB3	1:A:1057:ARG:HG3	1.99	0.44
1:A:1155:ASN:HD21	1:A:1160:GLN:CG	2.31	0.44
1:A:1103:THR:CG2	1:A:1112:TRP:CZ2	3.01	0.44
1:A:938:LEU:HD12	1:A:969:LEU:HG	1.99	0.44
1:A:954:GLY:O	1:A:955:GLN:C	2.55	0.44
1:A:1203:TRP:CE3	1:A:1209:ASP:HB3	2.52	0.44
1:A:1180:TRP:HZ3	1:A:1220:ASN:HD22	1.66	0.44
1:A:153:TYR:CE1	1:A:267:LYS:HD3	2.52	0.44
1:A:1053:LEU:CG	1:A:1054:GLN:H	2.30	0.44
1:A:944:ARG:O	1:A:963:GLN:HA	2.18	0.44
1:A:1149:GLY:HA2	1:A:1181:VAL:HG23	1.99	0.44
1:A:604:LYS:HE2	1:A:606:LEU:CD1	2.48	0.44
1:A:170:ASP:O	1:A:173:LEU:N	2.47	0.44
1:A:710:LYS:C	1:A:712:ASN:H	2.21	0.44
1:A:1063:PHE:HB2	1:A:1087:THR:CB	2.47	0.43
1:A:925:GLU:O	1:A:940:VAL:HG23	2.18	0.43
1:A:652:ASP:H	3:A:1255:GBL:CB	2.30	0.43
1:A:131:LYS:HD3	1:A:131:LYS:H	1.83	0.43
1:A:134:HIS:HA	1:A:137:GLN:NE2	2.33	0.43
1:A:881:HIS:NE2	1:A:899:THR:CG2	2.81	0.43
1:A:744:ASN:OD1	1:A:745:SER:N	2.51	0.43
1:A:208:GLN:HB2	1:A:208:GLN:HE21	1.62	0.43
1:A:1157:SER:O	1:A:1159:GLY:N	2.51	0.43
1:A:1115:ASP:O	1:A:1116:LEU:C	2.56	0.43
1:A:989:GLU:O	1:A:989:GLU:HG3	2.18	0.43
1:A:153:TYR:CZ	1:A:267:LYS:HD3	2.53	0.43
1:A:1019:ILE:HG21	1:A:1058:LEU:CD1	2.48	0.43
1:A:581:LYS:HE2	1:A:1248:LEU:HD21	1.99	0.43
1:A:613:PRO:HG2	1:A:614:HIS:CD2	2.53	0.43
1:A:1121:HIS:HB3	1:A:1158:ASP:O	2.18	0.43
1:A:207:ASP:OD2	1:A:230:LEU:HD21	2.19	0.43
1:A:870:ASP:OD1	1:A:870:ASP:C	2.56	0.43

Continued on next page...

Continued from previous page...

Atom-1	Atom-2	Interatomic distance (Å)	Clash overlap (Å)
1:A:1199:TYR:HD1	1:A:1200:LEU:O	2.01	0.43
1:A:1053:LEU:HG	1:A:1054:GLN:H	1.82	0.43
1:A:233:ARG:O	1:A:235:HIS:N	2.50	0.43
1:A:273:VAL:HG22	1:A:274:MET:N	2.33	0.43
1:A:814:ILE:HD13	1:A:848:PHE:HB2	1.99	0.43
1:A:302:LYS:C	1:A:304:GLU:H	2.21	0.43
1:A:1188:PRO:O	1:A:1190:SER:N	2.51	0.43
1:A:868:ASN:HD22	1:A:868:ASN:C	2.21	0.43
1:A:1072:VAL:HG12	1:A:1073:ILE:H	1.81	0.43
1:A:1167:PRO:O	1:A:1168:ILE:HB	2.19	0.43
1:A:811:ASP:HA	1:A:826:ILE:HG21	2.00	0.43
1:A:597:TRP:O	1:A:600:LYS:HE3	2.19	0.43
1:A:146:GLU:HA	1:A:147:PRO:HD3	1.93	0.43
1:A:287:GLY:HA3	1:A:288:ARG:HH11	1.83	0.43
1:A:1151:ILE:HD11	1:A:1193:LEU:CD2	2.48	0.43
1:A:585:LYS:HE3	1:A:1249:GLU:OE2	2.19	0.43
1:A:722:ASP:OD1	1:A:722:ASP:C	2.57	0.43
1:A:1126:HIS:ND1	1:A:1146:ASP:HB2	2.33	0.43
1:A:1048:LYS:HD2	1:A:1061:TRP:CZ3	2.53	0.43
1:A:1061:TRP:N	1:A:1061:TRP:CD1	2.86	0.43
1:A:546:GLU:OE2	1:A:907:ARG:NH2	2.52	0.43
1:A:1042:ALA:CB	1:A:1044:GLN:OE1	2.67	0.43
1:A:989:GLU:HG3	1:A:992:ASN:ND2	2.21	0.43
1:A:545:GLN:CG	1:A:612:ARG:HD2	2.49	0.42
1:A:358:SER:HB3	1:A:361:TYR:HB2	2.00	0.42
1:A:664:ALA:O	1:A:672:ILE:HA	2.19	0.42
1:A:960:PRO:O	1:A:961:GLU:HB2	2.19	0.42
1:A:376:ARG:HH22	1:A:417:GLU:CD	2.21	0.42
1:A:327:ILE:O	1:A:330:LEU:N	2.52	0.42
1:A:714:LEU:HD21	1:A:730:LEU:HD12	2.01	0.42
1:A:1004:LYS:HG2	1:A:1023:GLU:HB2	2.00	0.42
1:A:1232:THR:C	1:A:1233:TYR:CD2	2.93	0.42
1:A:1116:LEU:N	1:A:1116:LEU:HD12	2.10	0.42
1:A:1072:VAL:O	1:A:1073:ILE:CB	2.67	0.42
1:A:1012:THR:O	1:A:1013:ALA:C	2.57	0.42
1:A:817:ALA:O	1:A:818:LYS:C	2.58	0.42
1:A:343:ARG:HA	1:A:346:GLN:HG3	2.01	0.42
1:A:1146:ASP:HB3	1:A:1150:GLU:O	2.19	0.42
1:A:458:ARG:O	1:A:460:MET:O	2.38	0.42
1:A:656:HIS:CD2	1:A:678:ASP:OD2	2.73	0.42
1:A:764:ASP:OD1	1:A:766:THR:HG23	2.19	0.42

Continued on next page...

Continued from previous page...

Atom-1	Atom-2	Interatomic distance (Å)	Clash overlap (Å)
1:A:726:LYS:HD2	1:A:728:TRP:CZ2	2.55	0.42
1:A:1223:LYS:HE3	1:A:1223:LYS:HA	2.01	0.42
1:A:106:ILE:HG22	1:A:107:THR:N	2.35	0.42
1:A:653:ILE:HD11	1:A:689:GLY:HA3	2.02	0.42
1:A:952:LYS:O	1:A:953:THR:OG1	2.31	0.42
1:A:736:ARG:CG	1:A:737:ASN:ND2	2.82	0.42
1:A:562:ASN:HD21	1:A:564:VAL:CB	2.26	0.42
1:A:846:CYS:HB2	1:A:857:ILE:HG22	2.00	0.42
1:A:651:LEU:HD22	3:A:1255:GBL:HAC1	2.01	0.42
1:A:382:TYR:CD2	1:A:414:ILE:HD13	2.54	0.42
1:A:482:TYR:O	1:A:486:PHE:HB2	2.20	0.42
1:A:163:LEU:O	1:A:166:GLU:HB2	2.20	0.42
1:A:1009:ILE:HG23	1:A:1009:ILE:O	2.20	0.42
1:A:1096:ASP:O	1:A:1097:ALA:HB3	2.20	0.42
1:A:581:LYS:CE	1:A:1248:LEU:HD21	2.50	0.42
1:A:1246:GLN:O	1:A:1247:VAL:C	2.58	0.42
1:A:1083:CYS:SG	1:A:1112:TRP:HZ2	2.43	0.42
1:A:1012:THR:HG22	1:A:1013:ALA:N	2.35	0.42
1:A:604:LYS:HG2	1:A:606:LEU:HD22	2.01	0.42
1:A:700:GLU:OE2	1:A:700:GLU:HA	2.19	0.42
1:A:130:LYS:HD3	1:A:131:LYS:HG3	2.01	0.42
1:A:716:LEU:HD22	1:A:717:ALA:N	2.35	0.42
1:A:543:ASN:N	1:A:543:ASN:HD22	2.18	0.42
1:A:1061:TRP:CH2	1:A:1090:SER:HA	2.55	0.42
1:A:299:VAL:O	1:A:300:ASN:CB	2.67	0.42
1:A:832:LEU:N	1:A:832:LEU:CD1	2.82	0.42
1:A:266:ASP:OD1	1:A:268:SER:N	2.52	0.42
1:A:1110:LYS:HE2	1:A:1122:GLU:OE2	2.20	0.41
1:A:1072:VAL:CG1	1:A:1073:ILE:N	2.82	0.41
1:A:964:VAL:HG23	1:A:965:SER:N	2.35	0.41
1:A:302:LYS:O	1:A:303:LYS:HB2	2.20	0.41
1:A:103:ASP:HB3	1:A:104:GLY:H	1.65	0.41
1:A:568:LEU:HD23	1:A:568:LEU:HA	1.91	0.41
1:A:534:ASP:HB3	1:A:541:CYS:CB	2.41	0.41
1:A:809:ASP:OD2	1:A:809:ASP:N	2.50	0.41
1:A:1079:ARG:HH11	1:A:1117:LEU:HD21	1.86	0.41
1:A:785:ARG:CZ	1:A:831:LEU:HD22	2.50	0.41
1:A:992:ASN:CG	1:A:994:ARG:H	2.24	0.41
1:A:837:THR:O	1:A:839:HIS:N	2.53	0.41
1:A:602:THR:O	1:A:603:ILE:O	2.39	0.41
1:A:185:VAL:HG21	1:A:202:LEU:HD22	2.02	0.41

Continued on next page...

Continued from previous page...

Atom-1	Atom-2	Interatomic distance (Å)	Clash overlap (Å)
1:A:934:GLU:CG	1:A:935:THR:N	2.75	0.41
1:A:1111:ILE:C	1:A:1111:ILE:CD1	2.84	0.41
1:A:1010:GLN:HG2	1:A:1011:PHE:N	2.35	0.41
1:A:732:GLN:C	1:A:734:GLU:H	2.23	0.41
1:A:857:ILE:HG13	1:A:857:ILE:O	2.21	0.41
1:A:170:ASP:O	1:A:171:HIS:C	2.59	0.41
1:A:1008:HIS:HD2	1:A:1009:ILE:H	1.68	0.41
1:A:802:LYS:C	1:A:803:CYS:O	2.58	0.41
1:A:473:LEU:HD12	1:A:473:LEU:N	2.35	0.41
1:A:1198:GLY:HA2	1:A:1219:THR:HG22	2.02	0.41
1:A:397:THR:O	1:A:398:LYS:C	2.58	0.41
1:A:538:CYS:HB2	1:A:540:VAL:HG23	2.03	0.41
1:A:1074:THR:HG22	1:A:1076:ARG:HB2	2.01	0.41
1:A:1012:THR:HG22	1:A:1013:ALA:H	1.86	0.41
1:A:1234:VAL:HA	1:A:1243:TYR:O	2.21	0.41
1:A:966:CYS:SG	1:A:1007:ARG:O	2.78	0.41
1:A:235:HIS:N	1:A:236:PRO:CD	2.83	0.41
1:A:592:ARG:O	1:A:593:LEU:HB2	2.21	0.41
1:A:1140:ILE:O	1:A:1140:ILE:HG13	2.21	0.41
1:A:651:LEU:HA	3:A:1255:GBL:CB	2.51	0.41
1:A:555:LEU:CD1	1:A:555:LEU:H	2.32	0.41
1:A:736:ARG:HE	1:A:737:ASN:HD22	1.68	0.41
1:A:825:ASP:HB2	1:A:832:LEU:HD11	2.02	0.41
1:A:1155:ASN:O	1:A:1157:SER:N	2.54	0.41
1:A:814:ILE:HG13	1:A:814:ILE:O	2.19	0.41
1:A:1140:ILE:CD1	1:A:1156:VAL:O	2.66	0.41
1:A:1098:THR:HG1	1:A:1114:PHE:HE2	1.69	0.41
1:A:426:CYS:CB	1:A:435:TYR:CD1	3.03	0.41
1:A:604:LYS:O	1:A:606:LEU:N	2.53	0.41
1:A:560:PHE:HA	1:A:561:PRO:HD2	1.96	0.41
1:A:551:ASN:ND2	3:A:1254:GBL:HGC2	2.36	0.41
1:A:337:ARG:HG3	1:A:341:TYR:HE2	1.84	0.41
1:A:316:GLU:C	1:A:318:LYS:H	2.24	0.41
1:A:421:LYS:O	1:A:422:SER:HB2	2.21	0.41
1:A:1182:THR:OG1	1:A:1222:LYS:HA	2.21	0.40
1:A:209:GLU:O	1:A:210:GLU:CB	2.69	0.40
1:A:911:THR:O	1:A:912:LYS:C	2.60	0.40
1:A:838:GLY:HA3	1:A:859:LEU:CD2	2.46	0.40
1:A:358:SER:HB3	1:A:361:TYR:HD2	1.86	0.40
1:A:881:HIS:NE2	1:A:899:THR:HG21	2.36	0.40
1:A:778:ARG:HG3	1:A:778:ARG:NH1	2.36	0.40

Continued on next page...

Continued from previous page...

Atom-1	Atom-2	Interatomic distance (Å)	Clash overlap (Å)
1:A:457:HIS:CD2	1:A:493:SER:HB3	2.56	0.40
1:A:847:ASP:OD2	1:A:889:MET:HB2	2.21	0.40
1:A:334:PHE:HA	1:A:335:PRO:HD2	1.86	0.40
1:A:309:GLU:CD	1:A:309:GLU:H	2.25	0.40
1:A:526:PHE:HB3	1:A:545:GLN:NE2	2.37	0.40
1:A:604:LYS:HD3	1:A:606:LEU:CD2	2.51	0.40
1:A:826:ILE:HG23	1:A:827:HIS:CD2	2.56	0.40
1:A:1053:LEU:HG	1:A:1057:ARG:HG3	2.03	0.40
1:A:1010:GLN:O	1:A:1018:LEU:HD23	2.22	0.40
1:A:974:GLU:O	1:A:991:PRO:HD3	2.21	0.40
1:A:107:THR:O	1:A:108:SER:HB3	2.22	0.40
1:A:511:LYS:O	1:A:515:GLU:HG3	2.22	0.40
1:A:631:ALA:HA	1:A:640:GLN:O	2.21	0.40
1:A:708:THR:HG23	1:A:715:LEU:HB2	2.04	0.40
1:A:429:ASN:ND2	1:A:429:ASN:O	2.55	0.40

There are no symmetry-related clashes.

5.3 Torsion angles

5.3.1 Protein backbone

In the following table, the Percentiles column shows the percent Ramachandran outliers of the chain as a percentile score with respect to all X-ray entries followed by that with respect to entries of similar resolution.

The Analysed column shows the number of residues for which the backbone conformation was analysed, and the total number of residues.

Mol	Chain	Analysed	Favoured	Allowed	Outliers	Percentiles
1	A	1127/1249 (90%)	837 (74%)	202 (18%)	88 (8%)	1 6

All (88) Ramachandran outliers are listed below:

Mol	Chain	Res	Type
1	A	177	CYS
1	A	233	ARG
1	A	253	ALA
1	A	337	ARG
1	A	359	TYR
1	A	362	GLU

Continued on next page...

Continued from previous page...

Mol	Chain	Res	Type
1	A	408	THR
1	A	587	GLU
1	A	755	ASP
1	A	803	CYS
1	A	859	LEU
1	A	862	TYR
1	A	953	THR
1	A	962	ALA
1	A	1054	GLN
1	A	1075	GLY
1	A	1087	THR
1	A	1098	THR
1	A	1107	LYS
1	A	1129	CYS
1	A	1137	LEU
1	A	1138	ASP
1	A	1140	ILE
1	A	1151	ILE
1	A	1162	LEU
1	A	1168	ILE
1	A	1207	THR
1	A	1212	GLN
1	A	103	ASP
1	A	130	LYS
1	A	144	ASN
1	A	356	SER
1	A	377	GLU
1	A	588	GLY
1	A	590	THR
1	A	597	TRP
1	A	603	ILE
1	A	605	ASN
1	A	606	LEU
1	A	693	HIS
1	A	797	VAL
1	A	838	GLY
1	A	955	GLN
1	A	963	GLN
1	A	1044	GLN
1	A	1091	CYS
1	A	1095	SER
1	A	1106	ASP

Continued on next page...

Continued from previous page...

Mol	Chain	Res	Type
1	A	1139	GLY
1	A	1189	ASP
1	A	1213	THR
1	A	1214	PHE
1	A	1247	VAL
1	A	174	LEU
1	A	300	ASN
1	A	355	LYS
1	A	533	LEU
1	A	589	ASP
1	A	604	LYS
1	A	839	HIS
1	A	933	ASN
1	A	972	HIS
1	A	1002	HIS
1	A	1115	ASP
1	A	1117	LEU
1	A	1156	VAL
1	A	1210	SER
1	A	122	ARG
1	A	179	SER
1	A	593	LEU
1	A	884	TRP
1	A	1017	THR
1	A	1033	GLN
1	A	111	ARG
1	A	302	LYS
1	A	360	ASP
1	A	361	TYR
1	A	475	PRO
1	A	497	HIS
1	A	861	GLN
1	A	1223	LYS
1	A	995	VAL
1	A	1073	ILE
1	A	613	PRO
1	A	307	PRO
1	A	411	VAL
1	A	1181	VAL
1	A	880	GLY

5.3.2 Protein sidechains ⓘ

In the following table, the Percentiles column shows the percent sidechain outliers of the chain as a percentile score with respect to all X-ray entries followed by that with respect to entries of similar resolution.

The Analysed column shows the number of residues for which the sidechain conformation was analysed, and the total number of residues.

Mol	Chain	Analysed	Rotameric	Outliers	Percentiles	
1	A	1005/1104 (91%)	906 (90%)	99 (10%)	10	35

All (99) residues with a non-rotameric sidechain are listed below:

Mol	Chain	Res	Type
1	A	103	ASP
1	A	130	LYS
1	A	131	LYS
1	A	192	LYS
1	A	207	ASP
1	A	216	LEU
1	A	288	ARG
1	A	298	PHE
1	A	312	SER
1	A	337	ARG
1	A	346	GLN
1	A	347	ASN
1	A	360	ASP
1	A	402	VAL
1	A	403	LEU
1	A	426	CYS
1	A	429	ASN
1	A	461	VAL
1	A	473	LEU
1	A	504	MET
1	A	516	LEU
1	A	519	PRO
1	A	532	ILE
1	A	545	GLN
1	A	558	GLN
1	A	582	LEU
1	A	583	GLN
1	A	602	THR
1	A	612	ARG
1	A	613	PRO

Continued on next page...

Continued from previous page...

Mol	Chain	Res	Type
1	A	638	THR
1	A	639	LEU
1	A	663	CYS
1	A	691	LEU
1	A	694	THR
1	A	702	VAL
1	A	713	HIS
1	A	716	LEU
1	A	723	PHE
1	A	758	LEU
1	A	760	SER
1	A	767	LEU
1	A	784	LYS
1	A	785	ARG
1	A	787	PHE
1	A	798	GLU
1	A	803	CYS
1	A	822	LEU
1	A	826	ILE
1	A	844	GLN
1	A	866	LEU
1	A	868	ASN
1	A	870	ASP
1	A	871	SER
1	A	879	ARG
1	A	888	VAL
1	A	920	ILE
1	A	922	LEU
1	A	938	LEU
1	A	942	ASN
1	A	946	LEU
1	A	956	ILE
1	A	963	GLN
1	A	964	VAL
1	A	967	CYS
1	A	974	GLU
1	A	992	ASN
1	A	993	ASN
1	A	996	PHE
1	A	1007	ARG
1	A	1021	SER
1	A	1024	ASP

Continued on next page...

Continued from previous page...

Mol	Chain	Res	Type
1	A	1031	ASN
1	A	1041	GLN
1	A	1045	GLU
1	A	1051	ARG
1	A	1060	SER
1	A	1061	TRP
1	A	1063	PHE
1	A	1083	CYS
1	A	1096	ASP
1	A	1108	THR
1	A	1111	ILE
1	A	1112	TRP
1	A	1115	ASP
1	A	1129	CYS
1	A	1136	SER
1	A	1137	LEU
1	A	1151	ILE
1	A	1160	GLN
1	A	1162	LEU
1	A	1207	THR
1	A	1212	GLN
1	A	1214	PHE
1	A	1219	THR
1	A	1222	LYS
1	A	1223	LYS
1	A	1242	LEU
1	A	1248	LEU

Some sidechains can be flipped to improve hydrogen bonding and reduce clashes. All (40) such sidechains are listed below:

Mol	Chain	Res	Type
1	A	137	GLN
1	A	208	GLN
1	A	214	GLN
1	A	259	GLN
1	A	346	GLN
1	A	349	GLN
1	A	429	ASN
1	A	441	GLN
1	A	449	ASN
1	A	465	GLN
1	A	477	GLN

Continued on next page...

Continued from previous page...

Mol	Chain	Res	Type
1	A	531	HIS
1	A	543	ASN
1	A	545	GLN
1	A	551	ASN
1	A	562	ASN
1	A	586	GLN
1	A	656	HIS
1	A	693	HIS
1	A	713	HIS
1	A	737	ASN
1	A	776	ASN
1	A	782	ASN
1	A	836	HIS
1	A	844	GLN
1	A	868	ASN
1	A	917	ASN
1	A	933	ASN
1	A	942	ASN
1	A	992	ASN
1	A	993	ASN
1	A	1002	HIS
1	A	1028	GLN
1	A	1031	ASN
1	A	1044	GLN
1	A	1121	HIS
1	A	1160	GLN
1	A	1163	HIS
1	A	1177	HIS
1	A	1212	GLN

5.3.3 RNA ⓘ

There are no RNA molecules in this entry.

5.4 Non-standard residues in protein, DNA, RNA chains ⓘ

There are no non-standard protein/DNA/RNA residues in this entry.

5.5 Carbohydrates ⓘ

There are no carbohydrates in this entry.

5.6 Ligand geometry

6 ligands are modelled in this entry.

In the following table, the Counts columns list the number of bonds (or angles) for which Mogul statistics could be retrieved, the number of bonds (or angles) that are observed in the model and the number of bonds (or angles) that are defined in the chemical component dictionary. The Link column lists molecule types, if any, to which the group is linked. The Z score for a bond length (or angle) is the number of standard deviations the observed value is removed from the expected value. A bond length (or angle) with $|Z| > 2$ is considered an outlier worth inspection. RMSZ is the root-mean-square of all Z scores of the bond lengths (or angles).

Mol	Type	Chain	Res	Link	Bond lengths			Bond angles		
					Counts	RMSZ	$\# Z > 2$	Counts	RMSZ	$\# Z > 2$
2	ADP	A	1250	-	22,29,29	1.32	2 (9%)	27,45,45	2.45	4 (14%)
3	GBL	A	1251	-	6,6,6	0.53	0	7,7,7	0.98	1 (14%)
3	GBL	A	1252	-	6,6,6	0.49	0	7,7,7	0.97	1 (14%)
3	GBL	A	1253	-	6,6,6	0.66	0	7,7,7	0.92	1 (14%)
3	GBL	A	1254	-	6,6,6	0.68	0	7,7,7	0.95	1 (14%)
3	GBL	A	1255	-	6,6,6	0.61	0	7,7,7	0.93	1 (14%)

In the following table, the Chirals column lists the number of chiral outliers, the number of chiral centers analysed, the number of these observed in the model and the number defined in the chemical component dictionary. Similar counts are reported in the Torsion and Rings columns. '-' means no outliers of that kind were identified.

Mol	Type	Chain	Res	Link	Chirals	Torsions	Rings
2	ADP	A	1250	-	-	0/12/32/32	0/3/3/3
3	GBL	A	1251	-	-	0/0/7/7	0/1/1/1
3	GBL	A	1252	-	-	0/0/7/7	0/1/1/1
3	GBL	A	1253	-	-	0/0/7/7	0/1/1/1
3	GBL	A	1254	-	-	0/0/7/7	0/1/1/1
3	GBL	A	1255	-	-	0/0/7/7	0/1/1/1

All (2) bond length outliers are listed below:

Mol	Chain	Res	Type	Atoms	Z	Observed(Å)	Ideal(Å)
2	A	1250	ADP	C8-N7	-2.31	1.30	1.34
2	A	1250	ADP	O4'-C1'	3.67	1.45	1.41

All (9) bond angle outliers are listed below:

Mol	Chain	Res	Type	Atoms	Z	Observed(°)	Ideal(°)
2	A	1250	ADP	N3-C2-N1	-9.42	121.69	128.89

Continued on next page...

Continued from previous page...

Mol	Chain	Res	Type	Atoms	Z	Observed(°)	Ideal(°)
2	A	1250	ADP	PA-O3A-PB	-5.88	112.94	132.67
2	A	1250	ADP	C2'-C1'-N9	-3.67	108.69	114.29
2	A	1250	ADP	C4-C5-N7	-2.31	107.35	109.48
3	A	1253	GBL	OD-C-O	2.16	125.08	120.25
3	A	1254	GBL	OD-C-O	2.23	125.22	120.25
3	A	1255	GBL	OD-C-O	2.23	125.23	120.25
3	A	1252	GBL	OD-C-O	2.31	125.42	120.25
3	A	1251	GBL	OD-C-O	2.33	125.46	120.25

There are no chirality outliers.

There are no torsion outliers.

There are no ring outliers.

4 monomers are involved in 9 short contacts:

Mol	Chain	Res	Type	Clashes	Symm-Clashes
2	A	1250	ADP	1	0
3	A	1251	GBL	1	0
3	A	1254	GBL	2	0
3	A	1255	GBL	5	0

5.7 Other polymers [i](#)

There are no such residues in this entry.

5.8 Polymer linkage issues [i](#)

There are no chain breaks in this entry.

6 Fit of model and data [i](#)

6.1 Protein, DNA and RNA chains [i](#)

In the following table, the column labelled ‘#RSRZ> 2’ contains the number (and percentage) of RSRZ outliers, followed by percent RSRZ outliers for the chain as percentile scores relative to all X-ray entries and entries of similar resolution. The OWAB column contains the minimum, median, 95th percentile and maximum values of the occupancy-weighted average B-factor per residue. The column labelled ‘Q< 0.9’ lists the number of (and percentage) of residues with an average occupancy less than 0.9.

Mol	Chain	Analysed	<RSRZ>	#RSRZ>2		OWAB(Å ²)	Q<0.9
1	A	1133/1249 (90%)	-0.11	15 (1%)	79 53	45, 75, 112, 142	0

All (15) RSRZ outliers are listed below:

Mol	Chain	Res	Type	RSRZ
1	A	102	THR	7.5
1	A	1113	SER	4.2
1	A	1124	LYS	3.4
1	A	103	ASP	3.3
1	A	797	VAL	3.0
1	A	104	GLY	2.8
1	A	796	ASP	2.7
1	A	1154	TRP	2.6
1	A	605	ASN	2.5
1	A	1161	LEU	2.3
1	A	1100	PHE	2.1
1	A	1123	LEU	2.1
1	A	1109	ALA	2.1
1	A	1177	HIS	2.0
1	A	1168	ILE	2.0

6.2 Non-standard residues in protein, DNA, RNA chains [i](#)

There are no non-standard protein/DNA/RNA residues in this entry.

6.3 Carbohydrates [i](#)

There are no carbohydrates in this entry.

6.4 Ligands [i](#)

In the following table, the Atoms column lists the number of modelled atoms in the group and the number defined in the chemical component dictionary. LLDF column lists the quality of electron density of the group with respect to its neighbouring residues in protein, DNA or RNA chains. The B-factors column lists the minimum, median, 95th percentile and maximum values of B factors of atoms in the group. The column labelled 'Q< 0.9' lists the number of atoms with occupancy less than 0.9.

Mol	Type	Chain	Res	Atoms	RSCC	RSR	LLDF	B-factors(Å ²)	Q<0.9
3	GBL	A	1255	6/6	0.94	0.32	2.35	81,82,83,83	0
3	GBL	A	1254	6/6	0.91	0.25	1.48	115,115,116,116	0
3	GBL	A	1252	6/6	0.97	0.21	1.27	70,72,73,75	0
3	GBL	A	1251	6/6	0.95	0.23	0.43	56,58,58,59	0
2	ADP	A	1250	27/27	0.96	0.19	0.05	63,66,70,71	0
3	GBL	A	1253	6/6	0.88	0.32	-	108,108,109,109	0

6.5 Other polymers [i](#)

There are no such residues in this entry.