



Full wwPDB X-ray Structure Validation Report ⓘ

Feb 1, 2016 – 01:01 PM GMT

PDB ID : 3SLB
Title : Crystal structure of BA2930 in complex with AcCoA and cytosine
Authors : Klimecka, M.M.; Chruszcz, M.; Porebski, P.J.; Cymborowski, M.; Anderson, W.; Minor, W.
Deposited on : 2011-06-24
Resolution : 2.00 Å(reported)

This is a Full wwPDB X-ray Structure Validation Report for a publicly released PDB entry.
We welcome your comments at validation@mail.wwpdb.org
A user guide is available at
<http://wwpdb.org/validation/2016/XrayValidationReportHelp>
with specific help available everywhere you see the ⓘ symbol.

The following versions of software and data (see [references ⓘ](#)) were used in the production of this report:

MolProbity : 4.02b-467
Mogul : 1.7 (RC4), CSD as536be (2015)
Xtriage (Phenix) : 1.9-1692
EDS : rb-20026688
Percentile statistics : 20151230.v01 (using entries in the PDB archive December 30th 2015)
Refmac : 5.8.0135
CCP4 : 6.5.0
Ideal geometry (proteins) : Engh & Huber (2001)
Ideal geometry (DNA, RNA) : Parkinson et al. (1996)
Validation Pipeline (wwPDB-VP) : trunk26865

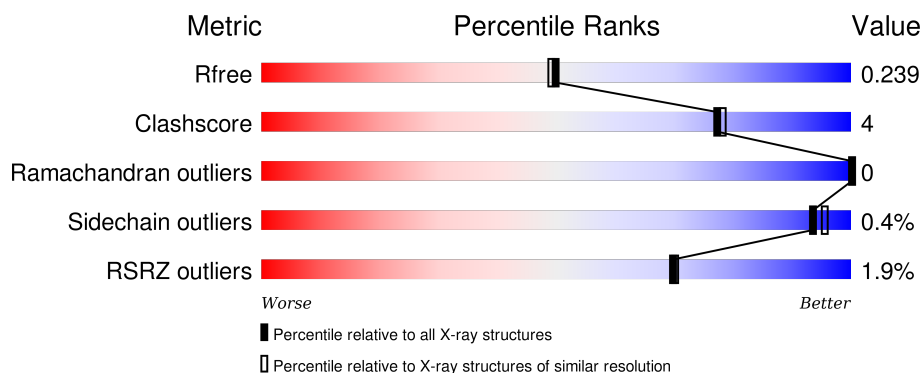
1 Overall quality at a glance

The following experimental techniques were used to determine the structure:

X-RAY DIFFRACTION

The reported resolution of this entry is 2.00 Å.

Percentile scores (ranging between 0-100) for global validation metrics of the entry are shown in the following graphic. The table shows the number of entries on which the scores are based.



Metric	Whole archive (#Entries)	Similar resolution (#Entries, resolution range(Å))
R_{free}	91344	6249 (2.00-2.00)
Clashscore	102246	7340 (2.00-2.00)
Ramachandran outliers	100387	7248 (2.00-2.00)
Sidechain outliers	100360	7247 (2.00-2.00)
RSRZ outliers	91569	6262 (2.00-2.00)

The table below summarises the geometric issues observed across the polymeric chains and their fit to the electron density. The red, orange, yellow and green segments on the lower bar indicate the fraction of residues that contain outliers for ≥ 3 , 2, 1 and 0 types of geometric quality criteria. A grey segment represents the fraction of residues that are not modelled. The numeric value for each fraction is indicated below the corresponding segment, with a dot representing fractions $\leq 5\%$. The upper red bar (where present) indicates the fraction of residues that have poor fit to the electron density. The numeric value is given above the bar.

Mol	Chain	Length	Quality of chain
1	A	268	<div> <div>2%</div> <div>93%</div> <div>7%</div> </div>
1	B	268	<div> <div>%</div> <div>91%</div> <div>8%</div> </div>
1	C	268	<div> <div>2%</div> <div>92%</div> <div>6%</div> </div>
1	D	268	<div> <div>%</div> <div>94%</div> <div>5%</div> </div>

The following table lists non-polymeric compounds, carbohydrate monomers and non-standard

residues in protein, DNA, RNA chains that are outliers for geometric or electron-density-fit criteria:

Mol	Type	Chain	Res	Chirality	Geometry	Clashes	Electron density
5	EPE	D	269	-	-	-	X
6	CPS	C	268	X	-	-	X

2 Entry composition

There are 7 unique types of molecules in this entry. The entry contains 9230 atoms, of which 0 are hydrogens and 0 are deuteriums.

In the tables below, the ZeroOcc column contains the number of atoms modelled with zero occupancy, the AltConf column contains the number of residues with at least one atom in alternate conformation and the Trace column contains the number of residues modelled with at most 2 atoms.

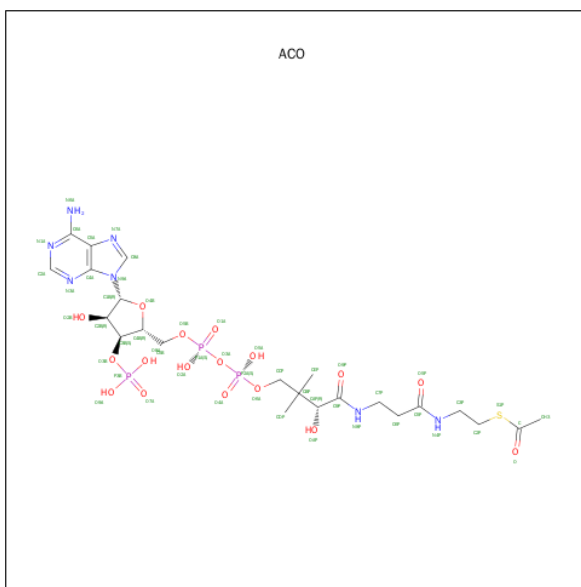
- Molecule 1 is a protein called Aminoglycoside N3-acetyltransferase.

Mol	Chain	Residues	Atoms						ZeroOcc	AltConf	Trace
1	A	266	Total	C	N	O	S	Se	0	1	0
			2063	1305	350	396	3	9			
1	D	266	Total	C	N	O	S	Se	0	0	0
			2070	1311	354	393	3	9			
1	C	264	Total	C	N	O	S	Se	0	0	0
			2046	1297	348	389	3	9			
1	B	266	Total	C	N	O	S	Se	0	2	0
			2084	1320	357	395	3	9			

There are 16 discrepancies between the modelled and reference sequences:

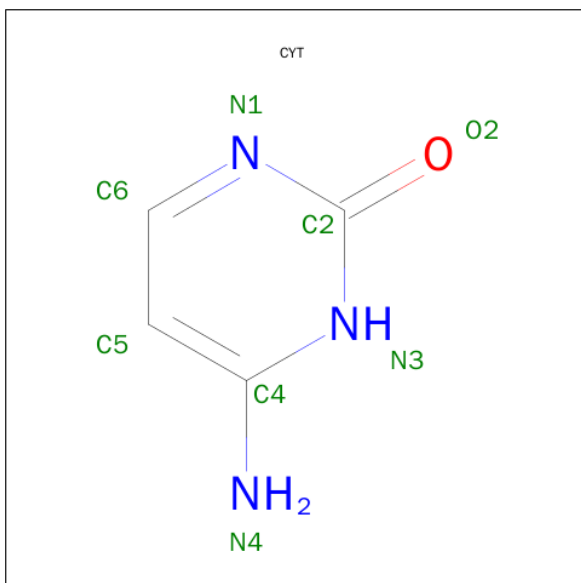
Chain	Residue	Modelled	Actual	Comment	Reference
A	-2	SER	-	EXPRESSION TAG	UNP Q81P86
A	-1	ASN	-	EXPRESSION TAG	UNP Q81P86
A	0	ALA	-	EXPRESSION TAG	UNP Q81P86
A	183	GLY	HIS	ENGINEERED MUTATION	UNP Q81P86
D	-2	SER	-	EXPRESSION TAG	UNP Q81P86
D	-1	ASN	-	EXPRESSION TAG	UNP Q81P86
D	0	ALA	-	EXPRESSION TAG	UNP Q81P86
D	183	GLY	HIS	ENGINEERED MUTATION	UNP Q81P86
C	-2	SER	-	EXPRESSION TAG	UNP Q81P86
C	-1	ASN	-	EXPRESSION TAG	UNP Q81P86
C	0	ALA	-	EXPRESSION TAG	UNP Q81P86
C	183	GLY	HIS	ENGINEERED MUTATION	UNP Q81P86
B	-2	SER	-	EXPRESSION TAG	UNP Q81P86
B	-1	ASN	-	EXPRESSION TAG	UNP Q81P86
B	0	ALA	-	EXPRESSION TAG	UNP Q81P86
B	183	GLY	HIS	ENGINEERED MUTATION	UNP Q81P86

- Molecule 2 is ACETYL COENZYME *A (three-letter code: ACO) (formula: $C_{23}H_{38}N_7O_{17}P_3S$).



Mol	Chain	Residues	Atoms						ZeroOcc	AltConf
2	A	1	Total 51	C 23	N 7	O 17	P 3	S 1	0	0
2	D	1	Total 51	C 23	N 7	O 17	P 3	S 1	0	0
2	C	1	Total 51	C 23	N 7	O 17	P 3	S 1	0	0
2	B	1	Total 51	C 23	N 7	O 17	P 3	S 1	0	0

- Molecule 3 is 6-AMINOPYRIMIDIN-2(1H)-ONE (three-letter code: CYT) (formula: $C_4H_5N_3O$).

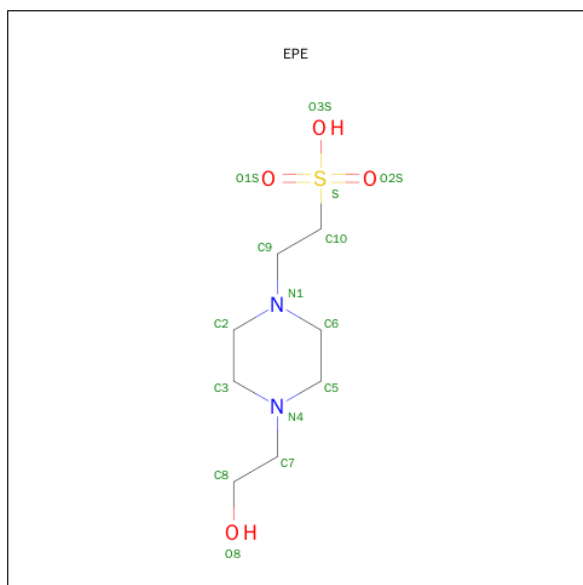


Mol	Chain	Residues	Atoms	ZeroOcc	AltConf
3	A	1	Total C N O 8 4 3 1	0	0
3	D	1	Total C N O 8 4 3 1	0	0
3	C	1	Total C N O 8 4 3 1	0	0
3	B	1	Total C N O 8 4 3 1	0	0

- Molecule 4 is MAGNESIUM ION (three-letter code: MG) (formula: Mg).

Mol	Chain	Residues	Atoms	ZeroOcc	AltConf
4	B	1	Total Mg 1 1	0	0
4	A	1	Total Mg 1 1	0	0
4	D	2	Total Mg 2 2	0	0

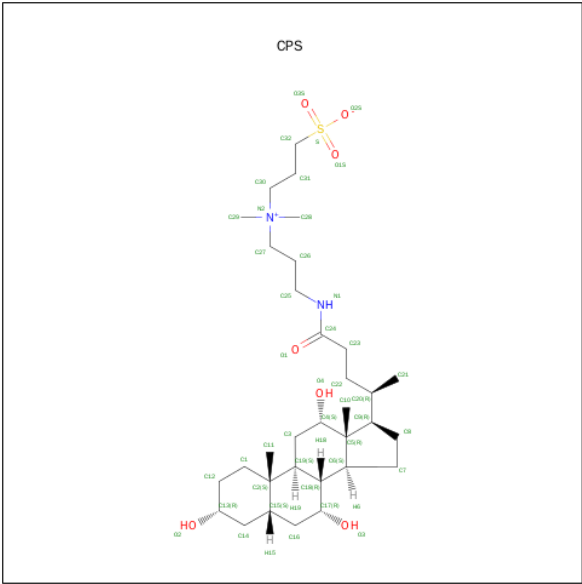
- Molecule 5 is 4-(2-HYDROXYETHYL)-1-PIPERAZINE ETHANESULFONIC ACID (three-letter code: EPE) (formula: C₈H₁₈N₂O₄S).



Mol	Chain	Residues	Atoms	ZeroOcc	AltConf
5	D	1	Total C N O S 15 8 2 4 1	0	0

- Molecule 6 is 3-[(3-CHOLAMIDOPROPYL)DIMETHYLAMMONIO]-1-PROPANESULFO

NATE (three-letter code: CPS) (formula: C₃₂H₅₈N₂O₇S).



Mol	Chain	Residues	Atoms					ZeroOcc	AltConf
6	C	1	Total	C	N	O	S	0	0
			42	32	2	7	1		

- Molecule 7 is water.

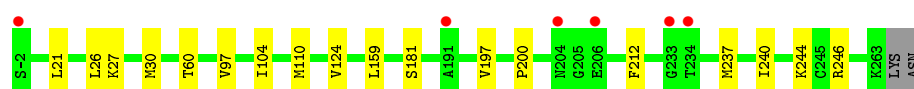
Mol	Chain	Residues	Atoms		ZeroOcc	AltConf
7	A	132	Total	O	0	0
			132	132		
7	D	189	Total	O	0	0
			189	189		
7	C	164	Total	O	0	0
			164	164		
7	B	185	Total	O	0	0
			185	185		

3 Residue-property plots [i](#)

These plots are drawn for all protein, RNA and DNA chains in the entry. The first graphic for a chain summarises the proportions of errors displayed in the second graphic. The second graphic shows the sequence view annotated by issues in geometry and electron density. Residues are color-coded according to the number of geometric quality criteria for which they contain at least one outlier: green = 0, yellow = 1, orange = 2 and red = 3 or more. A red dot above a residue indicates a poor fit to the electron density ($RSRZ > 2$). Stretches of 2 or more consecutive residues without any outlier are shown as a green connector. Residues present in the sample, but not in the model, are shown in grey.

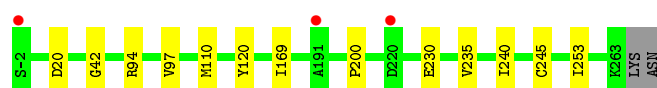
- Molecule 1: Aminoglycoside N3-acetyltransferase

Chain A: 



- Molecule 1: Aminoglycoside N3-acetyltransferase

Chain D: 



- Molecule 1: Aminoglycoside N3-acetyltransferase

Chain C: 



- Molecule 1: Aminoglycoside N3-acetyltransferase

Chain B: 



4 Data and refinement statistics

Property	Value	Source
Space group	P 1 21 1	Depositor
Cell constants a, b, c, α , β , γ	72.47Å 110.63Å 73.78Å 90.00° 112.24° 90.00°	Depositor
Resolution (Å)	23.99 – 2.00 23.99 – 2.00	Depositor EDS
% Data completeness (in resolution range)	97.0 (23.99-2.00) 97.0 (23.99-2.00)	Depositor EDS
R_{merge}	0.09	Depositor
R_{sym}	0.09	Depositor
$\langle I/\sigma(I) \rangle$ ¹	2.12 (at 1.99Å)	Xtriage
Refinement program	REFMAC 5.5.0109	Depositor
R, R_{free}	0.174 , 0.230 0.187 , 0.239	Depositor DCC
R_{free} test set	3546 reflections (5.30%)	DCC
Wilson B-factor (Å ²)	20.7	Xtriage
Anisotropy	0.210	Xtriage
Bulk solvent k_{sol} (e/Å ³), B_{sol} (Å ²)	0.37 , 47.4	EDS
Estimated twinning fraction	0.002 for l,-k,h	Xtriage
L-test for twinning ²	$\langle L \rangle = 0.50$, $\langle L^2 \rangle = 0.33$	Xtriage
Outliers	0 of 70480 reflections	Xtriage
F_o, F_c correlation	0.95	EDS
Total number of atoms	9230	wwPDB-VP
Average B, all atoms (Å ²)	27.0	wwPDB-VP

Xtriage's analysis on translational NCS is as follows: *The analyses of the Patterson function reveals a significant off-origin peak that is 47.48 % of the origin peak, indicating pseudo translational symmetry. The chance of finding a peak of this or larger height randomly in a structure without pseudo translational symmetry is equal to 9.8609e-05. The detected translational NCS is most likely also responsible for the elevated intensity ratio.*

¹Intensities estimated from amplitudes.

²Theoretical values of $\langle |L| \rangle$, $\langle L^2 \rangle$ for acentric reflections are 0.5, 0.375 respectively for untwinned datasets, and 0.333, 0.2 for perfectly twinned datasets.

5 Model quality [i](#)

5.1 Standard geometry [i](#)

Bond lengths and bond angles in the following residue types are not validated in this section: CPS, MG, EPE, ACO, CYT

The Z score for a bond length (or angle) is the number of standard deviations the observed value is removed from the expected value. A bond length (or angle) with $|Z| > 5$ is considered an outlier worth inspection. RMSZ is the root-mean-square of all Z scores of the bond lengths (or angles).

Mol	Chain	Bond lengths		Bond angles	
		RMSZ	$\# Z > 5$	RMSZ	$\# Z > 5$
1	A	0.59	0/2101	0.65	0/2839
1	B	0.68	0/2122	0.70	0/2863
1	C	0.64	0/2081	0.69	0/2809
1	D	0.65	0/2105	0.68	1/2839 (0.0%)
All	All	0.64	0/8409	0.68	1/11350 (0.0%)

There are no bond length outliers.

All (1) bond angle outliers are listed below:

Mol	Chain	Res	Type	Atoms	Z	Observed(°)	Ideal(°)
1	D	94	ARG	NE-CZ-NH2	-5.59	117.50	120.30

There are no chirality outliers.

There are no planarity outliers.

5.2 Too-close contacts [i](#)

In the following table, the Non-H and H(model) columns list the number of non-hydrogen atoms and hydrogen atoms in the chain respectively. The H(added) column lists the number of hydrogen atoms added and optimized by MolProbity. The Clashes column lists the number of clashes within the asymmetric unit, whereas Symm-Clashes lists symmetry related clashes.

Mol	Chain	Non-H	H(model)	H(added)	Clashes	Symm-Clashes
1	A	2063	0	2028	19	0
1	B	2084	0	2079	15	0
1	C	2046	0	2029	12	0
1	D	2070	0	2065	10	0
2	A	51	0	34	1	0
2	B	51	0	34	1	0

Continued on next page...

Continued from previous page...

Mol	Chain	Non-H	H(model)	H(added)	Clashes	Symm-Clashes
2	C	51	0	34	2	0
2	D	51	0	34	2	0
3	A	8	0	4	0	0
3	B	8	0	4	0	0
3	C	8	0	4	0	0
3	D	8	0	4	0	0
4	A	1	0	0	0	0
4	B	1	0	0	0	0
4	D	2	0	0	0	0
5	D	15	0	17	1	0
6	C	42	0	58	5	0
7	A	132	0	0	2	0
7	B	185	0	0	1	0
7	C	164	0	0	2	0
7	D	189	0	0	0	0
All	All	9230	0	8428	62	0

The all-atom clashscore is defined as the number of clashes found per 1000 atoms (including hydrogen atoms). The all-atom clashscore for this structure is 4.

All (62) close contacts within the same asymmetric unit are listed below, sorted by their clash magnitude.

Atom-1	Atom-2	Interatomic distance (Å)	Clash overlap (Å)
1:A:237:MSE:HE1	1:A:244:LYS:NZ	1.84	0.93
1:B:110:MSE:HE1	2:B:266:ACO:H22	1.53	0.89
1:A:110:MSE:HE1	2:A:266:ACO:H22	1.57	0.87
1:A:104:ILE:HD11	7:A:323:HOH:O	1.76	0.86
1:A:237:MSE:HE1	1:A:244:LYS:HZ2	1.44	0.82
1:A:237:MSE:CE	1:A:244:LYS:HZ2	1.99	0.75
1:C:110:MSE:HE1	2:C:266:ACO:H22	1.70	0.72
1:D:97:VAL:HG13	1:D:200:PRO:HG3	1.73	0.70
1:D:110:MSE:HE1	2:D:266:ACO:H22	1.72	0.70
1:A:237:MSE:CE	1:A:244:LYS:NZ	2.55	0.70
1:A:237:MSE:HE1	1:A:244:LYS:HZ1	1.58	0.69
1:A:237:MSE:HE3	1:A:246:ARG:HG2	1.79	0.64
1:A:237:MSE:HE3	1:A:246:ARG:CG	2.27	0.64
6:C:268:CPS:H23A	6:C:268:CPS:H272	1.82	0.62
1:B:88:GLU:HG3	1:B:88:GLU:O	2.00	0.62
1:B:262:ARG:O	1:B:263:LYS:HB2	2.00	0.61
1:D:42:GLY:O	2:D:266:ACO:H2A	2.03	0.59
1:C:141:GLU:O	1:C:145:VAL:HG13	2.02	0.58

Continued on next page...

Continued from previous page...

Atom-1	Atom-2	Interatomic distance (Å)	Clash overlap (Å)
1:C:73:ASP:HB2	7:C:301:HOH:O	2.03	0.58
1:B:21:LEU:HD22	1:B:26:LEU:HD22	1.85	0.57
1:A:159:LEU:HD13	1:A:181:SER:HA	1.87	0.57
1:A:21:LEU:HD22	1:A:26:LEU:HD22	1.86	0.56
1:A:97:VAL:HG13	1:A:200:PRO:HG3	1.88	0.54
6:C:268:CPS:C23	6:C:268:CPS:H272	2.38	0.54
1:C:127:ASN:O	1:C:127:ASN:OD1	2.26	0.52
1:A:124:VAL:HG22	7:A:570:HOH:O	2.09	0.52
1:B:168:TYR:CZ	1:B:249:LYS:HD3	2.45	0.51
1:D:169:ILE:HD12	1:D:253:ILE:HG21	1.92	0.51
1:A:21:LEU:HD23	1:A:240:ILE:HD11	1.94	0.49
1:D:20:ASP:HB3	1:D:240:ILE:HD13	1.94	0.49
1:B:26:LEU:HB3	1:B:58:VAL:HG11	1.95	0.49
1:B:230:GLU:HG2	1:B:235:VAL:HG11	1.95	0.48
1:B:97:VAL:HG13	1:B:200:PRO:HG3	1.96	0.47
1:D:240:ILE:HG12	1:D:245:CYS:SG	2.55	0.47
1:C:177:ASP:O	2:C:266:ACO:HH33	2.14	0.47
5:D:269:EPE:H81	5:D:269:EPE:H32	1.65	0.47
1:C:197:VAL:HG23	1:C:212:PHE:CE1	2.50	0.47
1:C:189:SER:OG	1:C:191:ALA:HB2	2.15	0.47
1:B:27:LYS:HB2	1:B:30:MSE:HE3	1.97	0.46
6:C:268:CPS:H10B	6:C:268:CPS:H22	1.96	0.46
1:B:176:TYR:HB3	7:B:392:HOH:O	2.14	0.46
6:C:268:CPS:H4	6:C:268:CPS:H22	1.98	0.46
1:D:20:ASP:HB3	1:D:240:ILE:CD1	2.46	0.45
1:C:149:LEU:HD21	1:C:210:LYS:HG2	1.97	0.45
1:B:88:GLU:CG	1:B:88:GLU:O	2.64	0.45
1:C:197:VAL:CG2	1:C:212:PHE:CE1	3.00	0.44
1:A:27:LYS:HE2	1:A:30:MSE:HE3	1.98	0.44
1:D:97:VAL:CG1	1:D:200:PRO:HG3	2.46	0.44
1:C:57:GLU:OE1	7:C:661:HOH:O	2.21	0.44
1:A:237:MSE:HE3	1:A:246:ARG:HG3	1.99	0.44
1:B:151:MSE:HE3	1:B:187:VAL:HG13	2.00	0.44
1:A:237:MSE:HE2	1:A:237:MSE:HB3	1.95	0.43
1:A:197:VAL:CG2	1:A:212:PHE:CE1	3.01	0.43
1:B:168:TYR:CE1	1:B:249:LYS:HD3	2.54	0.43
1:C:259:GLU:HA	1:C:259:GLU:OE1	2.19	0.43
1:D:230:GLU:HG2	1:D:235:VAL:HG11	2.01	0.42
1:C:192:CYS:O	1:C:215:MSE:HE2	2.19	0.42
1:D:169:ILE:CD1	1:D:253:ILE:HG21	2.50	0.42
1:A:197:VAL:HG23	1:A:212:PHE:CE1	2.55	0.42

Continued on next page...

Continued from previous page...

Atom-1	Atom-2	Interatomic distance (Å)	Clash overlap (Å)
1:B:87:GLU:HA	1:B:90:TRP:CE2	2.54	0.41
6:C:268:CPS:H10B	6:C:268:CPS:C22	2.51	0.41
1:B:177:ASP:N	1:B:177:ASP:OD1	2.52	0.41

There are no symmetry-related clashes.

5.3 Torsion angles [i](#)

5.3.1 Protein backbone [i](#)

In the following table, the Percentiles column shows the percent Ramachandran outliers of the chain as a percentile score with respect to all X-ray entries followed by that with respect to entries of similar resolution.

The Analysed column shows the number of residues for which the backbone conformation was analysed, and the total number of residues.

Mol	Chain	Analysed	Favoured	Allowed	Outliers	Percentiles	
1	A	265/268 (99%)	259 (98%)	6 (2%)	0	100	100
1	B	266/268 (99%)	259 (97%)	7 (3%)	0	100	100
1	C	262/268 (98%)	259 (99%)	3 (1%)	0	100	100
1	D	264/268 (98%)	259 (98%)	5 (2%)	0	100	100
All	All	1057/1072 (99%)	1036 (98%)	21 (2%)	0	100	100

There are no Ramachandran outliers to report.

5.3.2 Protein sidechains [i](#)

In the following table, the Percentiles column shows the percent sidechain outliers of the chain as a percentile score with respect to all X-ray entries followed by that with respect to entries of similar resolution.

The Analysed column shows the number of residues for which the sidechain conformation was analysed, and the total number of residues.

Mol	Chain	Analysed	Rotameric	Outliers	Percentiles	
1	A	227/224 (101%)	226 (100%)	1 (0%)	93	95
1	B	231/224 (103%)	230 (100%)	1 (0%)	93	95

Continued on next page...

Continued from previous page...

Mol	Chain	Analysed	Rotameric	Outliers	Percentiles	
1	C	225/224 (100%)	224 (100%)	1 (0%)	93	95
1	D	230/224 (103%)	229 (100%)	1 (0%)	93	95
All	All	913/896 (102%)	909 (100%)	4 (0%)	93	95

All (4) residues with a non-rotameric sidechain are listed below:

Mol	Chain	Res	Type
1	A	60	THR
1	D	120	TYR
1	C	112	LYS
1	B	156	GLU

Some sidechains can be flipped to improve hydrogen bonding and reduce clashes. All (2) such sidechains are listed below:

Mol	Chain	Res	Type
1	A	127	ASN
1	D	146	ASN

5.3.3 RNA [i](#)

There are no RNA molecules in this entry.

5.4 Non-standard residues in protein, DNA, RNA chains [i](#)

There are no non-standard protein/DNA/RNA residues in this entry.

5.5 Carbohydrates [i](#)

There are no carbohydrates in this entry.

5.6 Ligand geometry [i](#)

Of 14 ligands modelled in this entry, 4 are monoatomic - leaving 10 for Mogul analysis.

In the following table, the Counts columns list the number of bonds (or angles) for which Mogul statistics could be retrieved, the number of bonds (or angles) that are observed in the model and the number of bonds (or angles) that are defined in the chemical component dictionary. The Link column lists molecule types, if any, to which the group is linked. The Z score for a bond length

(or angle) is the number of standard deviations the observed value is removed from the expected value. A bond length (or angle) with $|Z| > 2$ is considered an outlier worth inspection. RMSZ is the root-mean-square of all Z scores of the bond lengths (or angles).

Mol	Type	Chain	Res	Link	Bond lengths			Bond angles		
					Counts	RMSZ	# Z > 2	Counts	RMSZ	# Z > 2
2	ACO	A	266	-	43,53,53	0.78	1 (2%)	55,79,79	1.60	5 (9%)
3	CYT	A	267	-	5,8,8	1.28	1 (20%)	8,10,10	6.18	3 (37%)
2	ACO	B	266	-	43,53,53	0.74	1 (2%)	55,79,79	1.65	10 (18%)
3	CYT	B	267	-	5,8,8	1.24	1 (20%)	8,10,10	5.12	3 (37%)
2	ACO	C	266	-	43,53,53	0.72	1 (2%)	55,79,79	1.55	8 (14%)
3	CYT	C	267	-	5,8,8	1.34	1 (20%)	8,10,10	6.89	4 (50%)
6	CPS	C	268	-	44,45,45	0.93	0	67,70,70	3.07	24 (35%)
2	ACO	D	266	-	43,53,53	0.86	1 (2%)	55,79,79	1.52	6 (10%)
3	CYT	D	267	-	5,8,8	1.21	0	8,10,10	4.61	4 (50%)
5	EPE	D	269	-	14,15,15	0.51	0	18,20,20	1.95	5 (27%)

In the following table, the Chirals column lists the number of chiral outliers, the number of chiral centers analysed, the number of these observed in the model and the number defined in the chemical component dictionary. Similar counts are reported in the Torsion and Rings columns. '-' means no outliers of that kind were identified.

Mol	Type	Chain	Res	Link	Chirals	Torsions	Rings
2	ACO	A	266	-	-	0/47/67/67	0/3/3/3
3	CYT	A	267	-	-	0/0/0/0	0/1/1/1
2	ACO	B	266	-	-	0/47/67/67	0/3/3/3
3	CYT	B	267	-	-	0/0/0/0	0/1/1/1
2	ACO	C	266	-	-	0/47/67/67	0/3/3/3
3	CYT	C	267	-	-	0/0/0/0	0/1/1/1
6	CPS	C	268	-	4/4/14/15	0/25/90/90	0/4/4/4
2	ACO	D	266	-	-	0/47/67/67	0/3/3/3
3	CYT	D	267	-	-	0/0/0/0	0/1/1/1
5	EPE	D	269	-	-	0/9/19/19	0/1/1/1

All (7) bond length outliers are listed below:

Mol	Chain	Res	Type	Atoms	Z	Observed(Å)	Ideal(Å)
3	A	267	CYT	C5-C6	-2.19	1.34	1.38
3	C	267	CYT	C5-C6	-2.10	1.34	1.38
3	B	267	CYT	C5-C6	-2.06	1.34	1.38
2	A	266	ACO	C5A-C4A	2.17	1.45	1.40
2	D	266	ACO	C5A-C4A	2.50	1.46	1.40

Continued on next page...

Continued from previous page...

Mol	Chain	Res	Type	Atoms	Z	Observed(Å)	Ideal(Å)
2	C	266	ACO	C5A-C4A	2.62	1.46	1.40
2	B	266	ACO	C5A-C4A	2.75	1.46	1.40

All (72) bond angle outliers are listed below:

Mol	Chain	Res	Type	Atoms	Z	Observed(°)	Ideal(°)
3	C	267	CYT	N1-C2-N3	-14.65	118.99	128.33
3	A	267	CYT	N1-C2-N3	-13.18	119.92	128.33
3	B	267	CYT	N1-C2-N3	-12.12	120.60	128.33
6	C	268	CPS	C15-C16-C17	-11.73	101.36	114.44
3	D	267	CYT	N1-C2-N3	-10.75	121.47	128.33
6	C	268	CPS	C15-C14-C13	-8.81	99.80	112.91
2	A	266	ACO	N3A-C2A-N1A	-8.30	122.54	128.89
2	B	266	ACO	N3A-C2A-N1A	-7.20	123.39	128.89
2	C	266	ACO	N3A-C2A-N1A	-6.82	123.67	128.89
2	D	266	ACO	N3A-C2A-N1A	-6.67	123.79	128.89
6	C	268	CPS	C9-C5-C4	-5.42	112.88	117.68
6	C	268	CPS	C19-C3-C4	-5.02	108.02	114.36
6	C	268	CPS	C10-C5-C6	-4.39	104.28	111.22
6	C	268	CPS	C19-C2-C15	-3.99	102.77	108.67
2	C	266	ACO	C1B-N9A-C4A	-3.73	121.31	126.94
6	C	268	CPS	C7-C6-C18	-3.56	113.15	118.32
2	B	266	ACO	O3B-P3B-O7A	-3.44	98.52	107.11
2	C	266	ACO	C4A-C5A-N7A	-3.14	106.59	109.48
2	D	266	ACO	C4A-C5A-N7A	-3.12	106.61	109.48
2	D	266	ACO	O3B-P3B-O7A	-2.78	100.16	107.11
2	B	266	ACO	C4A-C5A-N7A	-2.71	106.98	109.48
2	C	266	ACO	O3B-P3B-O7A	-2.62	100.57	107.11
2	B	266	ACO	OAP-CAP-C9P	-2.56	104.50	110.38
6	C	268	CPS	C16-C15-C2	-2.56	109.84	112.66
2	D	266	ACO	C2P-C3P-N4P	-2.47	107.42	112.36
2	B	266	ACO	C1B-N9A-C4A	-2.44	123.26	126.94
6	C	268	CPS	O1-C24-C23	-2.44	117.78	121.98
2	D	266	ACO	C1B-N9A-C4A	-2.40	123.32	126.94
3	C	267	CYT	C5-C6-N1	-2.39	121.18	123.90
6	C	268	CPS	O3-C17-C18	-2.33	104.12	109.26
2	B	266	ACO	C7P-C6P-C5P	-2.33	108.48	112.31
2	C	266	ACO	C2P-C3P-N4P	-2.14	108.07	112.36
6	C	268	CPS	O3-C17-C16	-2.08	104.96	110.06
3	D	267	CYT	C6-C5-C4	2.04	118.74	116.64
6	C	268	CPS	O3S-S-C32	2.05	108.65	106.91
2	D	266	ACO	O9A-P3B-O7A	2.10	117.34	110.58

Continued on next page...

Continued from previous page...

Mol	Chain	Res	Type	Atoms	Z	Observed(°)	Ideal(°)
2	C	266	ACO	O8A-P3B-O7A	2.12	117.42	110.58
2	B	266	ACO	O5A-P2A-O3A	2.13	114.76	105.09
2	C	266	ACO	C2A-N1A-C6A	2.14	122.58	118.77
6	C	268	CPS	C12-C1-C2	2.14	116.66	112.84
2	C	266	ACO	O9A-P3B-O7A	2.15	117.49	110.58
2	B	266	ACO	C2A-N1A-C6A	2.16	122.63	118.77
2	A	266	ACO	C2A-N1A-C6A	2.27	122.83	118.77
2	A	266	ACO	O2A-P1A-O1A	2.33	125.17	112.53
2	A	266	ACO	O9A-P3B-O8A	2.39	116.48	107.38
2	B	266	ACO	CDP-CBP-CCP	2.40	111.62	108.50
3	A	267	CYT	C2-N3-C4	2.44	119.05	115.61
6	C	268	CPS	C5-C9-C20	2.50	122.54	119.50
2	B	266	ACO	O9A-P3B-O7A	2.67	119.17	110.58
6	C	268	CPS	C1-C12-C13	2.80	114.97	110.43
2	A	266	ACO	O9A-P3B-O7A	2.87	119.83	110.58
5	D	269	EPE	O2S-S-C10	2.89	109.37	106.91
3	B	267	CYT	C2-N3-C4	2.92	119.73	115.61
5	D	269	EPE	O1S-S-C10	3.17	109.61	106.91
3	D	267	CYT	C2-N3-C4	3.19	120.11	115.61
3	C	267	CYT	C2-N3-C4	3.38	120.37	115.61
5	D	269	EPE	C5-N4-C3	3.48	116.44	108.90
6	C	268	CPS	C23-C24-N1	3.55	122.62	116.46
5	D	269	EPE	C2-C3-N4	3.82	117.47	110.63
6	C	268	CPS	C19-C18-C6	3.86	114.93	109.62
5	D	269	EPE	C6-C5-N4	3.97	117.73	110.63
6	C	268	CPS	C22-C20-C9	4.22	119.11	110.24
6	C	268	CPS	C19-C18-C17	4.43	117.16	111.92
6	C	268	CPS	C2-C19-C18	4.84	117.19	111.88
6	C	268	CPS	C9-C5-C6	5.05	105.15	100.05
6	C	268	CPS	C6-C5-C4	5.85	112.63	107.39
3	D	267	CYT	C6-N1-C2	5.95	117.33	114.40
6	C	268	CPS	C16-C15-C14	6.20	117.97	111.05
6	C	268	CPS	C16-C17-C18	6.73	118.61	111.47
3	B	267	CYT	C6-N1-C2	7.10	117.89	114.40
3	A	267	CYT	C6-N1-C2	10.94	119.78	114.40
3	C	267	CYT	C6-N1-C2	11.98	120.29	114.40

All (4) chirality outliers are listed below:

Mol	Chain	Res	Type	Atom
6	C	268	CPS	C15
6	C	268	CPS	C18

Continued on next page...

Continued from previous page...

Mol	Chain	Res	Type	Atom
6	C	268	CPS	C13
6	C	268	CPS	C6

There are no torsion outliers.

There are no ring outliers.

6 monomers are involved in 12 short contacts:

Mol	Chain	Res	Type	Clashes	Symm-Clashes
2	A	266	ACO	1	0
2	B	266	ACO	1	0
2	C	266	ACO	2	0
6	C	268	CPS	5	0
2	D	266	ACO	2	0
5	D	269	EPE	1	0

5.7 Other polymers [i](#)

There are no such residues in this entry.

5.8 Polymer linkage issues [i](#)

There are no chain breaks in this entry.

6 Fit of model and data ⓘ

6.1 Protein, DNA and RNA chains ⓘ

In the following table, the column labelled ‘#RSRZ> 2’ contains the number (and percentage) of RSRZ outliers, followed by percent RSRZ outliers for the chain as percentile scores relative to all X-ray entries and entries of similar resolution. The OWAB column contains the minimum, median, 95th percentile and maximum values of the occupancy-weighted average B-factor per residue. The column labelled ‘Q< 0.9’ lists the number of (and percentage) of residues with an average occupancy less than 0.9.

Mol	Chain	Analysed	<RSRZ>	#RSRZ>2	OWAB(Å ²)	Q<0.9
1	A	257/268 (95%)	-0.03	6 (2%) 64 64	16, 28, 51, 69	0
1	B	257/268 (95%)	-0.25	4 (1%) 74 75	13, 24, 43, 48	0
1	C	255/268 (95%)	-0.14	6 (2%) 62 63	15, 25, 44, 57	0
1	D	257/268 (95%)	-0.32	3 (1%) 81 81	14, 23, 38, 51	0
All	All	1026/1072 (95%)	-0.19	19 (1%) 70 70	13, 25, 45, 69	0

All (19) RSRZ outliers are listed below:

Mol	Chain	Res	Type	RSRZ
1	C	204	ASN	4.4
1	D	220	ASP	3.7
1	A	-2	SER	3.7
1	C	205	GLY	3.4
1	C	206	GLU	3.3
1	B	-2	SER	3.1
1	A	204	ASN	3.0
1	C	220	ASP	2.8
1	C	234	THR	2.8
1	A	234	THR	2.6
1	A	233	GLY	2.6
1	B	190	GLY	2.5
1	B	191	ALA	2.3
1	B	204	ASN	2.3
1	A	191	ALA	2.2
1	A	206	GLU	2.1
1	D	191	ALA	2.1
1	C	169	ILE	2.1
1	D	-2	SER	2.1

6.2 Non-standard residues in protein, DNA, RNA chains [i](#)

There are no non-standard protein/DNA/RNA residues in this entry.

6.3 Carbohydrates [i](#)

There are no carbohydrates in this entry.

6.4 Ligands [i](#)

In the following table, the Atoms column lists the number of modelled atoms in the group and the number defined in the chemical component dictionary. LLDF column lists the quality of electron density of the group with respect to its neighbouring residues in protein, DNA or RNA chains. The B-factors column lists the minimum, median, 95th percentile and maximum values of B factors of atoms in the group. The column labelled 'Q< 0.9' lists the number of atoms with occupancy less than 0.9.

Mol	Type	Chain	Res	Atoms	RSCC	RSR	LLDF	B-factors(Å ²)	Q<0.9
6	CPS	C	268	42/42	0.70	0.19	4.98	42,49,74,75	0
5	EPE	D	269	15/15	0.65	0.20	4.06	80,81,84,84	0
2	ACO	D	266	51/51	0.95	0.10	-0.10	12,20,38,38	0
2	ACO	A	266	51/51	0.96	0.10	-0.28	15,23,42,42	0
3	CYT	D	267	8/8	0.93	0.10	-0.31	22,24,26,26	0
2	ACO	B	266	51/51	0.95	0.09	-0.35	16,20,34,37	0
3	CYT	B	267	8/8	0.94	0.09	-0.51	23,23,25,25	0
2	ACO	C	266	51/51	0.96	0.08	-0.58	17,23,36,37	0
4	MG	B	268	1/1	0.92	0.08	-0.61	35,35,35,35	0
3	CYT	A	267	8/8	0.96	0.07	-0.85	22,25,26,27	0
3	CYT	C	267	8/8	0.96	0.08	-0.95	22,24,25,27	0
4	MG	D	268	1/1	0.87	0.13	-	38,38,38,38	0
4	MG	A	268	1/1	0.94	0.18	-	34,34,34,34	0
4	MG	D	270	1/1	0.95	0.05	-	45,45,45,45	0

6.5 Other polymers [i](#)

There are no such residues in this entry.