



# Full wwPDB X-ray Structure Validation Report ⓘ

Feb 1, 2016 – 01:02 PM GMT

PDB ID : 3SLS  
Title : Crystal Structure of human MEK-1 kinase in complex with UCB1353770 and AMPPNP  
Authors : Meier, C.; Ceska, T.A.  
Deposited on : 2011-06-25  
Resolution : 2.30 Å(reported)

This is a Full wwPDB X-ray Structure Validation Report for a publicly released PDB entry.  
We welcome your comments at [validation@mail.wwpdb.org](mailto:validation@mail.wwpdb.org)  
A user guide is available at  
<http://wwpdb.org/validation/2016/XrayValidationReportHelp>  
with specific help available everywhere you see the ⓘ symbol.

---

The following versions of software and data (see [references ⓘ](#)) were used in the production of this report:

MolProbity : 4.02b-467  
Mogul : 1.7 (RC4), CSD as536be (2015)  
Xtriage (Phenix) : 1.9-1692  
EDS : rb-20026688  
Percentile statistics : 20151230.v01 (using entries in the PDB archive December 30th 2015)  
Refmac : 5.8.0135  
CCP4 : 6.5.0  
Ideal geometry (proteins) : Engh & Huber (2001)  
Ideal geometry (DNA, RNA) : Parkinson et al. (1996)  
Validation Pipeline (wwPDB-VP) : trunk26865

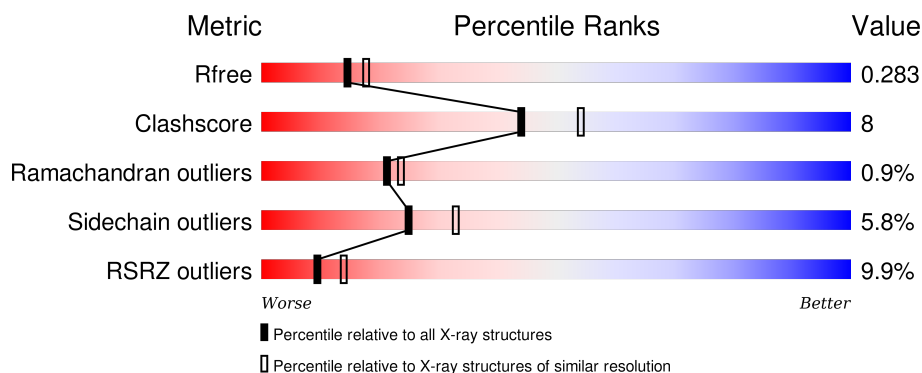
# 1 Overall quality at a glance

The following experimental techniques were used to determine the structure:

## *X-RAY DIFFRACTION*

The reported resolution of this entry is 2.30 Å.

Percentile scores (ranging between 0-100) for global validation metrics of the entry are shown in the following graphic. The table shows the number of entries on which the scores are based.



Metric	Whole archive (#Entries)	Similar resolution (#Entries, resolution range(Å))
$R_{free}$	91344	3852 (2.30-2.30)
Clashscore	102246	4452 (2.30-2.30)
Ramachandran outliers	100387	4410 (2.30-2.30)
Sidechain outliers	100360	4409 (2.30-2.30)
RSRZ outliers	91569	3857 (2.30-2.30)

The table below summarises the geometric issues observed across the polymeric chains and their fit to the electron density. The red, orange, yellow and green segments on the lower bar indicate the fraction of residues that contain outliers for  $\geq 3$ , 2, 1 and 0 types of geometric quality criteria. A grey segment represents the fraction of residues that are not modelled. The numeric value for each fraction is indicated below the corresponding segment, with a dot representing fractions  $\leq 5\%$ . The upper red bar (where present) indicates the fraction of residues that have poor fit to the electron density. The numeric value is given above the bar.

Mol	Chain	Length	Quality of chain
1	A	304	<div> <div>9%</div> <div>81%</div> <div>13%</div> <div>• •</div> </div>
1	B	304	<div> <div>10%</div> <div>79%</div> <div>14%</div> <div>• •</div> </div>

## 2 Entry composition

There are 5 unique types of molecules in this entry. The entry contains 5030 atoms, of which 0 are hydrogens and 0 are deuteriums.

In the tables below, the ZeroOcc column contains the number of atoms modelled with zero occupancy, the AltConf column contains the number of residues with at least one atom in alternate conformation and the Trace column contains the number of residues modelled with at most 2 atoms.

- Molecule 1 is a protein called Dual specificity mitogen-activated protein kinase kinase 1.

Mol	Chain	Residues	Atoms					ZeroOcc	AltConf	Trace
1	A	292	Total	C	N	O	S	0	3	0
			2264	1441	392	416	15			
1	B	295	Total	C	N	O	S	0	1	1
			2280	1458	386	420	16			

There are 106 discrepancies between the modelled and reference sequences:

Chain	Residue	Modelled	Actual	Comment	Reference
A	42	MET	-	EXPRESSION TAG	UNP Q02750
A	43	THR	-	EXPRESSION TAG	UNP Q02750
A	44	LEU	-	EXPRESSION TAG	UNP Q02750
A	264	GLY	-	INSERTION	UNP Q02750
A	265	SER	-	INSERTION	UNP Q02750
A	266	GLY	-	INSERTION	UNP Q02750
A	267	SER	-	INSERTION	UNP Q02750
A	268	GLY	-	INSERTION	UNP Q02750
A	269	SER	-	INSERTION	UNP Q02750
A	?	-	PRO	DELETION	UNP Q02750
A	?	-	PRO	DELETION	UNP Q02750
A	?	-	PRO	DELETION	UNP Q02750
A	?	-	ASP	DELETION	UNP Q02750
A	?	-	ALA	DELETION	UNP Q02750
A	?	-	LYS	DELETION	UNP Q02750
A	?	-	GLU	DELETION	UNP Q02750
A	?	-	LEU	DELETION	UNP Q02750
A	?	-	GLU	DELETION	UNP Q02750
A	?	-	LEU	DELETION	UNP Q02750
A	?	-	MET	DELETION	UNP Q02750
A	?	-	PHE	DELETION	UNP Q02750
A	?	-	GLY	DELETION	UNP Q02750
A	?	-	CYS	DELETION	UNP Q02750
A	?	-	GLN	DELETION	UNP Q02750
A	?	-	VAL	DELETION	UNP Q02750

*Continued on next page...*

*Continued from previous page...*

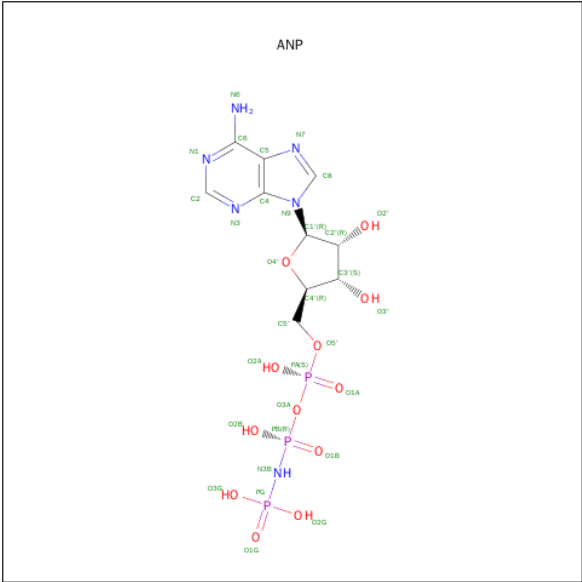
Chain	Residue	Modelled	Actual	Comment	Reference
A	?	-	GLU	DELETION	UNP Q02750
A	?	-	GLY	DELETION	UNP Q02750
A	?	-	ASP	DELETION	UNP Q02750
A	?	-	ALA	DELETION	UNP Q02750
A	?	-	ALA	DELETION	UNP Q02750
A	?	-	GLU	DELETION	UNP Q02750
A	?	-	THR	DELETION	UNP Q02750
A	?	-	PRO	DELETION	UNP Q02750
A	?	-	PRO	DELETION	UNP Q02750
A	?	-	ARG	DELETION	UNP Q02750
A	?	-	PRO	DELETION	UNP Q02750
A	?	-	ARG	DELETION	UNP Q02750
A	?	-	THR	DELETION	UNP Q02750
A	?	-	PRO	DELETION	UNP Q02750
A	?	-	GLY	DELETION	UNP Q02750
A	?	-	ARG	DELETION	UNP Q02750
A	?	-	PRO	DELETION	UNP Q02750
A	?	-	LEU	DELETION	UNP Q02750
A	?	-	SER	DELETION	UNP Q02750
A	?	-	SER	DELETION	UNP Q02750
A	?	-	TYR	DELETION	UNP Q02750
A	?	-	GLY	DELETION	UNP Q02750
A	?	-	MET	DELETION	UNP Q02750
A	?	-	ASP	DELETION	UNP Q02750
A	?	-	SER	DELETION	UNP Q02750
A	?	-	ARG	DELETION	UNP Q02750
A	?	-	PRO	DELETION	UNP Q02750
A	?	-	PRO	DELETION	UNP Q02750
B	42	MET	-	EXPRESSION TAG	UNP Q02750
B	43	THR	-	EXPRESSION TAG	UNP Q02750
B	44	LEU	-	EXPRESSION TAG	UNP Q02750
B	264	GLY	-	INSERTION	UNP Q02750
B	265	SER	-	INSERTION	UNP Q02750
B	266	GLY	-	INSERTION	UNP Q02750
B	267	SER	-	INSERTION	UNP Q02750
B	268	GLY	-	INSERTION	UNP Q02750
B	269	SER	-	INSERTION	UNP Q02750
B	?	-	PRO	DELETION	UNP Q02750
B	?	-	PRO	DELETION	UNP Q02750
B	?	-	PRO	DELETION	UNP Q02750
B	?	-	ASP	DELETION	UNP Q02750
B	?	-	ALA	DELETION	UNP Q02750

*Continued on next page...*

*Continued from previous page...*

Chain	Residue	Modelled	Actual	Comment	Reference
B	?	-	LYS	DELETION	UNP Q02750
B	?	-	GLU	DELETION	UNP Q02750
B	?	-	LEU	DELETION	UNP Q02750
B	?	-	GLU	DELETION	UNP Q02750
B	?	-	LEU	DELETION	UNP Q02750
B	?	-	MET	DELETION	UNP Q02750
B	?	-	PHE	DELETION	UNP Q02750
B	?	-	GLY	DELETION	UNP Q02750
B	?	-	CYS	DELETION	UNP Q02750
B	?	-	GLN	DELETION	UNP Q02750
B	?	-	VAL	DELETION	UNP Q02750
B	?	-	GLU	DELETION	UNP Q02750
B	?	-	GLY	DELETION	UNP Q02750
B	?	-	ASP	DELETION	UNP Q02750
B	?	-	ALA	DELETION	UNP Q02750
B	?	-	ALA	DELETION	UNP Q02750
B	?	-	GLU	DELETION	UNP Q02750
B	?	-	THR	DELETION	UNP Q02750
B	?	-	PRO	DELETION	UNP Q02750
B	?	-	PRO	DELETION	UNP Q02750
B	?	-	ARG	DELETION	UNP Q02750
B	?	-	PRO	DELETION	UNP Q02750
B	?	-	ARG	DELETION	UNP Q02750
B	?	-	THR	DELETION	UNP Q02750
B	?	-	PRO	DELETION	UNP Q02750
B	?	-	GLY	DELETION	UNP Q02750
B	?	-	ARG	DELETION	UNP Q02750
B	?	-	PRO	DELETION	UNP Q02750
B	?	-	LEU	DELETION	UNP Q02750
B	?	-	SER	DELETION	UNP Q02750
B	?	-	SER	DELETION	UNP Q02750
B	?	-	TYR	DELETION	UNP Q02750
B	?	-	GLY	DELETION	UNP Q02750
B	?	-	MET	DELETION	UNP Q02750
B	?	-	ASP	DELETION	UNP Q02750
B	?	-	SER	DELETION	UNP Q02750
B	?	-	ARG	DELETION	UNP Q02750
B	?	-	PRO	DELETION	UNP Q02750
B	?	-	PRO	DELETION	UNP Q02750

- Molecule 2 is PHOSPHOAMINOPHOSPHONIC ACID-ADENYLATE ESTER (three-letter code: ANP) (formula: C<sub>10</sub>H<sub>17</sub>N<sub>6</sub>O<sub>12</sub>P<sub>3</sub>).

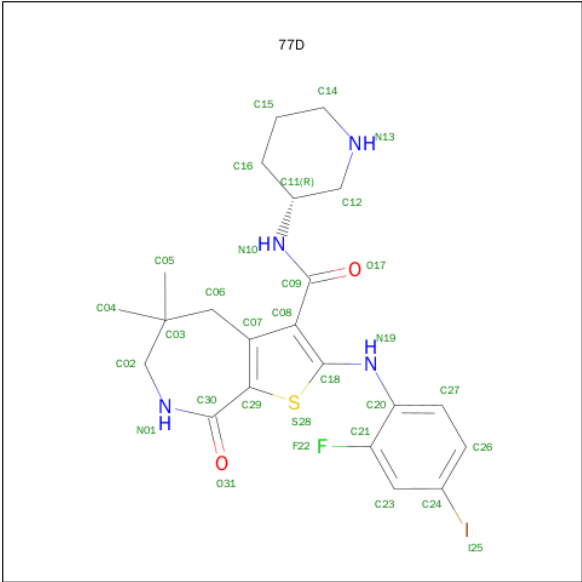


Mol	Chain	Residues	Atoms					ZeroOcc	AltConf
2	A	1	Total	C	N	O	P	0	0
			31	10	6	12	3		
2	B	1	Total	C	N	O	P	0	0
			31	10	6	12	3		

- Molecule 3 is MAGNESIUM ION (three-letter code: MG) (formula: Mg).

Mol	Chain	Residues	Atoms		ZeroOcc	AltConf
3	B	1	Total	Mg	0	0
			1	1		
3	A	1	Total	Mg	0	0
			1	1		

- Molecule 4 is 2-[(2-FLUORO-4-IODOPHENYL)AMINO]-5,5-DIMETHYL-8-OXO-N-[(3R)-PIPERIDIN-3-YL]-5,6,7,8-TETRAHYDRO-4H-THIENO[2,3-C]AZEPINE-3-CARBOXAMIDE (three-letter code: 77D) (formula: C<sub>22</sub>H<sub>26</sub>FIN<sub>4</sub>O<sub>2</sub>S).



Mol	Chain	Residues	Atoms							ZeroOcc	AltConf
4	A	1	Total	C	F	I	N	O	S	0	0
			31	22	1	1	4	2	1		
4	B	1	Total	C	F	I	N	O	S	0	0
			31	22	1	1	4	2	1		

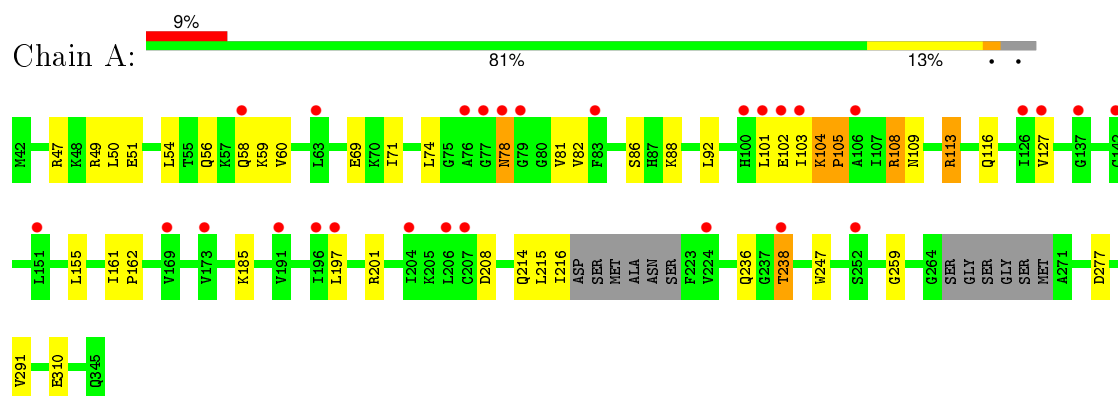
- Molecule 5 is water.

Mol	Chain	Residues	Atoms		ZeroOcc	AltConf
5	A	184	Total	O	0	0
			184	184		
5	B	176	Total	O	0	0
			176	176		

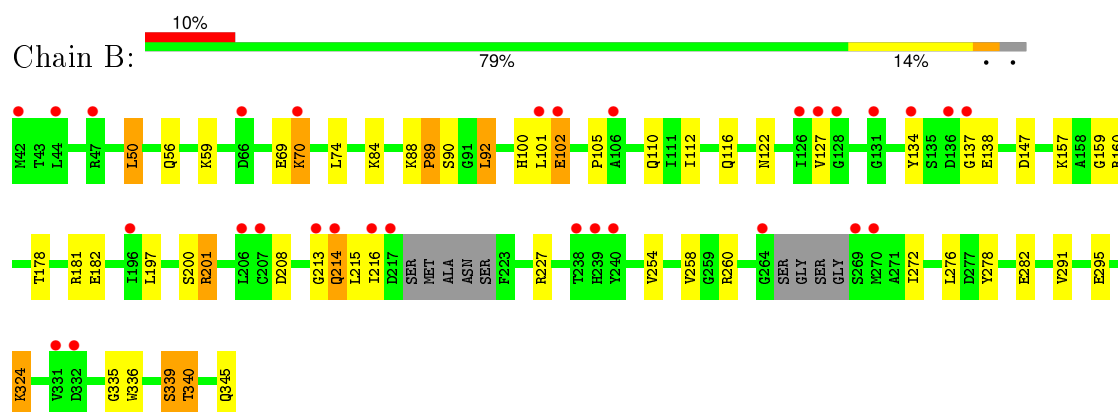
### 3 Residue-property plots [i](#)

These plots are drawn for all protein, RNA and DNA chains in the entry. The first graphic for a chain summarises the proportions of errors displayed in the second graphic. The second graphic shows the sequence view annotated by issues in geometry and electron density. Residues are color-coded according to the number of geometric quality criteria for which they contain at least one outlier: green = 0, yellow = 1, orange = 2 and red = 3 or more. A red dot above a residue indicates a poor fit to the electron density ( $RSRZ > 2$ ). Stretches of 2 or more consecutive residues without any outlier are shown as a green connector. Residues present in the sample, but not in the model, are shown in grey.

- Molecule 1: Dual specificity mitogen-activated protein kinase kinase 1



- Molecule 1: Dual specificity mitogen-activated protein kinase kinase 1





## 4 Data and refinement statistics

Property	Value	Source
Space group	P 1 21 1	Depositor
Cell constants a, b, c, $\alpha$ , $\beta$ , $\gamma$	47.50Å 153.89Å 48.21Å 90.00° 101.48° 90.00°	Depositor
Resolution (Å)	30.00 – 2.30 29.83 – 2.30	Depositor EDS
% Data completeness (in resolution range)	99.3 (30.00-2.30) 99.3 (29.83-2.30)	Depositor EDS
$R_{merge}$	(Not available)	Depositor
$R_{sym}$	(Not available)	Depositor
$\langle I/\sigma(I) \rangle$ <sup>1</sup>	1.60 (at 2.31Å)	Xtriage
Refinement program	REFMAC 5.2.0019	Depositor
R, $R_{free}$	0.206 , 0.287 0.204 , 0.283	Depositor DCC
$R_{free}$ test set	1508 reflections (5.33%)	DCC
Wilson B-factor (Å <sup>2</sup> )	42.5	Xtriage
Anisotropy	0.024	Xtriage
Bulk solvent $k_{sol}$ (e/Å <sup>3</sup> ), $B_{sol}$ (Å <sup>2</sup> )	0.30 , 44.7	EDS
Estimated twinning fraction	0.037 for l,-k,h	Xtriage
L-test for twinning <sup>2</sup>	$\langle  L  \rangle = 0.50$ , $\langle L^2 \rangle = 0.33$	Xtriage
Outliers	0 of 29812 reflections	Xtriage
$F_o, F_c$ correlation	0.94	EDS
Total number of atoms	5030	wwPDB-VP
Average B, all atoms (Å <sup>2</sup> )	44.0	wwPDB-VP

Xtriage's analysis on translational NCS is as follows: *The largest off-origin peak in the Patterson function is 5.07% of the height of the origin peak. No significant pseudotranslation is detected.*

<sup>1</sup>Intensities estimated from amplitudes.

<sup>2</sup>Theoretical values of  $\langle |L| \rangle$ ,  $\langle L^2 \rangle$  for acentric reflections are 0.5, 0.375 respectively for untwinned datasets, and 0.333, 0.2 for perfectly twinned datasets.

## 5 Model quality [i](#)

### 5.1 Standard geometry [i](#)

Bond lengths and bond angles in the following residue types are not validated in this section: 77D, MG, ANP

The Z score for a bond length (or angle) is the number of standard deviations the observed value is removed from the expected value. A bond length (or angle) with  $|Z| > 5$  is considered an outlier worth inspection. RMSZ is the root-mean-square of all Z scores of the bond lengths (or angles).

Mol	Chain	Bond lengths		Bond angles	
		RMSZ	# Z  >5	RMSZ	# Z  >5
1	A	0.45	0/2314	0.57	0/3114
1	B	0.45	0/2322	0.58	0/3125
All	All	0.45	0/4636	0.57	0/6239

There are no bond length outliers.

There are no bond angle outliers.

There are no chirality outliers.

There are no planarity outliers.

### 5.2 Too-close contacts [i](#)

In the following table, the Non-H and H(model) columns list the number of non-hydrogen atoms and hydrogen atoms in the chain respectively. The H(added) column lists the number of hydrogen atoms added and optimized by MolProbity. The Clashes column lists the number of clashes within the asymmetric unit, whereas Symm-Clashes lists symmetry related clashes.

Mol	Chain	Non-H	H(model)	H(added)	Clashes	Symm-Clashes
1	A	2264	0	2253	29	0
1	B	2280	0	2288	41	0
2	A	31	0	13	1	0
2	B	31	0	13	0	0
3	A	1	0	0	0	0
3	B	1	0	0	0	0
4	A	31	0	26	5	0
4	B	31	0	26	2	0
5	A	184	0	0	2	0
5	B	176	0	0	10	0
All	All	5030	0	4619	74	0

The all-atom clashscore is defined as the number of clashes found per 1000 atoms (including hydrogen atoms). The all-atom clashscore for this structure is 8.

All (74) close contacts within the same asymmetric unit are listed below, sorted by their clash magnitude.

Atom-1	Atom-2	Interatomic distance (Å)	Clash overlap (Å)
1:A:104:LYS:HB3	1:A:105:PRO:HA	1.28	1.10
1:B:336:TRP:O	1:B:340:THR:HG23	1.69	0.93
1:A:109:ASN:O	1:A:113:ARG:HG2	1.74	0.87
1:A:49:ARG:HG2	1:A:201:ARG:HH21	1.40	0.82
1:A:104:LYS:HB3	1:A:105:PRO:CA	2.11	0.79
1:B:50:LEU:HD11	1:B:122:ASN:HB3	1.64	0.79
1:B:335:GLY:O	1:B:339:SER:HB2	1.86	0.76
1:B:213:GLY:HA3	1:B:214:GLN:CB	2.16	0.75
1:B:213:GLY:CA	1:B:214:GLN:HB2	2.17	0.74
1:A:104:LYS:CB	1:A:105:PRO:HA	2.15	0.72
1:A:49:ARG:HG2	1:A:201:ARG:NH2	2.04	0.72
1:B:213:GLY:CA	1:B:214:GLN:CB	2.71	0.67
1:B:116:GLN:HG2	5:B:495:HOH:O	1.96	0.65
1:B:56:GLN:CG	1:B:92:LEU:HD11	2.27	0.65
1:A:277:ASP:OD1	5:A:367:HOH:O	2.15	0.64
1:B:147:ASP:CG	1:B:201:ARG:HH22	2.02	0.62
1:B:260:ARG:NH1	5:B:356:HOH:O	2.25	0.61
4:A:500:77D:N10	4:A:500:77D:H06	2.15	0.61
1:A:214:GLN:HA	1:A:216:ILE:N	2.17	0.59
1:A:127:VAL:HG21	1:A:197:LEU:HD12	1.86	0.58
1:A:69:GLU:HB2	1:A:88:LYS:HD2	1.86	0.58
1:A:104:LYS:CB	1:A:105:PRO:CA	2.81	0.57
1:A:47:ARG:O	1:A:51:GLU:HG2	2.06	0.56
1:B:213:GLY:HA2	1:B:214:GLN:HB2	1.88	0.56
1:B:127:VAL:HG21	1:B:197:LEU:HD12	1.87	0.56
1:B:157:LYS:HE3	1:B:340:THR:O	2.07	0.55
1:B:213:GLY:HA3	1:B:214:GLN:HB3	1.89	0.55
1:B:69:GLU:HB3	5:B:392:HOH:O	2.07	0.54
1:A:78:ASN:OD1	2:A:400:ANP:N3B	2.28	0.54
1:A:109:ASN:O	1:A:113:ARG:CG	2.52	0.53
1:B:208:ASP:HB3	5:B:476:HOH:O	2.09	0.52
1:B:159:GLY:O	5:B:502:HOH:O	2.19	0.52
1:B:102:GLU:HG3	5:B:444:HOH:O	2.10	0.51
1:A:155:LEU:HD11	1:A:259:GLY:HA2	1.92	0.51
1:A:105:PRO:O	1:A:108:ARG:HG3	2.11	0.51
1:A:49:ARG:NH2	1:A:201:ARG:HB3	2.27	0.50
1:A:78:ASN:HB2	4:A:500:77D:H14A	1.93	0.49

*Continued on next page...*

*Continued from previous page...*

Atom-1	Atom-2	Interatomic distance (Å)	Clash overlap (Å)
1:B:160:ARG:HD3	5:B:379:HOH:O	2.13	0.49
1:A:56:GLN:HA	1:A:59:LYS:HD3	1.95	0.48
1:B:112:ILE:O	1:B:116:GLN:NE2	2.46	0.48
4:A:500:77D:HN10	4:A:500:77D:H06	1.76	0.48
1:B:215:LEU:HA	1:B:216:ILE:HA	1.63	0.47
1:B:88:LYS:C	1:B:90:SER:H	2.17	0.47
1:A:238:THR:HA	5:A:484:HOH:O	2.15	0.47
1:B:100:HIS:HA	1:B:138:GLU:HG2	1.97	0.47
1:B:74:LEU:HD21	1:B:84:LYS:HB2	1.97	0.46
1:B:134:TYR:OH	1:B:137:GLY:HA2	2.16	0.46
4:B:500:77D:H06	4:B:500:77D:N10	2.31	0.46
1:B:324:LYS:HE3	5:B:351:HOH:O	2.16	0.45
4:A:500:77D:C06	4:A:500:77D:HN10	2.30	0.44
1:B:88:LYS:HB2	1:B:89:PRO:HD3	1.99	0.44
1:B:147:ASP:CG	1:B:201:ARG:NH2	2.68	0.44
1:B:178:THR:O	1:B:182:GLU:HG2	2.17	0.44
1:B:116:GLN:CG	5:B:495:HOH:O	2.60	0.43
1:B:254:VAL:O	1:B:258:VAL:HG22	2.18	0.43
1:A:105:PRO:O	1:A:109:ASN:ND2	2.51	0.43
1:A:214:GLN:HA	1:A:215:LEU:C	2.38	0.43
1:B:227:ARG:NH2	5:B:398:HOH:O	2.49	0.43
1:B:70:LYS:CD	1:B:70:LYS:H	2.32	0.43
1:B:295:GLU:H	1:B:295:GLU:CD	2.22	0.43
1:A:161:ILE:HA	1:A:162:PRO:HD3	1.96	0.42
1:B:200:SER:OG	1:B:201:ARG:NH2	2.31	0.42
1:A:208:ASP:HA	4:A:500:77D:C20	2.50	0.42
1:B:208:ASP:HA	4:B:500:77D:C20	2.50	0.42
1:B:181:ARG:HD2	1:B:181:ARG:HA	1.75	0.42
1:A:74:LEU:HD12	1:A:82:VAL:HG12	2.03	0.41
1:B:272:ILE:O	1:B:276:LEU:HG	2.20	0.41
1:A:247:TRP:CD1	1:A:247:TRP:C	2.94	0.41
1:B:336:TRP:O	1:B:340:THR:CG2	2.53	0.41
1:B:147:ASP:OD2	1:B:201:ARG:NH2	2.54	0.40
1:A:71:ILE:HD11	1:A:86:SER:HB2	2.02	0.40
1:A:54:LEU:O	1:A:58[A]:GLN:NE2	2.54	0.40
1:B:278:TYR:CE2	1:B:282:GLU:HG3	2.57	0.40

There are no symmetry-related clashes.

## 5.3 Torsion angles [i](#)

### 5.3.1 Protein backbone [i](#)

In the following table, the Percentiles column shows the percent Ramachandran outliers of the chain as a percentile score with respect to all X-ray entries followed by that with respect to entries of similar resolution.

The Analysed column shows the number of residues for which the backbone conformation was analysed, and the total number of residues.

Mol	Chain	Analysed	Favoured	Allowed	Outliers	Percentiles	
1	A	289/304 (95%)	275 (95%)	11 (4%)	3 (1%)	19	21
1	B	289/304 (95%)	277 (96%)	10 (4%)	2 (1%)	26	31
All	All	578/608 (95%)	552 (96%)	21 (4%)	5 (1%)	21	24

All (5) Ramachandran outliers are listed below:

Mol	Chain	Res	Type
1	A	104	LYS
1	A	103	ILE
1	A	105	PRO
1	B	105	PRO
1	B	89	PRO

### 5.3.2 Protein sidechains [i](#)

In the following table, the Percentiles column shows the percent sidechain outliers of the chain as a percentile score with respect to all X-ray entries followed by that with respect to entries of similar resolution.

The Analysed column shows the number of residues for which the sidechain conformation was analysed, and the total number of residues.

Mol	Chain	Analysed	Rotameric	Outliers	Percentiles	
1	A	242/262 (92%)	227 (94%)	15 (6%)	23	30
1	B	246/262 (94%)	232 (94%)	14 (6%)	25	34
All	All	488/524 (93%)	459 (94%)	29 (6%)	25	32

All (29) residues with a non-rotameric sidechain are listed below:

Mol	Chain	Res	Type
1	A	50	LEU

*Continued on next page...*

*Continued from previous page...*

Mol	Chain	Res	Type
1	A	78	ASN
1	A	81	VAL
1	A	92	LEU
1	A	101	LEU
1	A	102	GLU
1	A	108	ARG
1	A	113	ARG
1	A	116	GLN
1	A	185	LYS
1	A	236	GLN
1	A	238	THR
1	A	291	VAL
1	A	310[A]	GLU
1	A	310[B]	GLU
1	B	50	LEU
1	B	59	LYS
1	B	70	LYS
1	B	92	LEU
1	B	101	LEU
1	B	102	GLU
1	B	110	GLN
1	B	201	ARG
1	B	214	GLN
1	B	291	VAL
1	B	324	LYS
1	B	339	SER
1	B	340	THR
1	B	345	GLN

Some sidechains can be flipped to improve hydrogen bonding and reduce clashes. All (6) such sidechains are listed below:

Mol	Chain	Res	Type
1	A	56	GLN
1	A	145	HIS
1	A	316	GLN
1	B	109	ASN
1	B	116	GLN
1	B	345	GLN

### 5.3.3 RNA ⓘ

There are no RNA molecules in this entry.

## 5.4 Non-standard residues in protein, DNA, RNA chains ⓘ

There are no non-standard protein/DNA/RNA residues in this entry.

## 5.5 Carbohydrates ⓘ

There are no carbohydrates in this entry.

## 5.6 Ligand geometry ⓘ

Of 6 ligands modelled in this entry, 2 are monoatomic - leaving 4 for Mogul analysis.

In the following table, the Counts columns list the number of bonds (or angles) for which Mogul statistics could be retrieved, the number of bonds (or angles) that are observed in the model and the number of bonds (or angles) that are defined in the chemical component dictionary. The Link column lists molecule types, if any, to which the group is linked. The Z score for a bond length (or angle) is the number of standard deviations the observed value is removed from the expected value. A bond length (or angle) with  $|Z| > 2$  is considered an outlier worth inspection. RMSZ is the root-mean-square of all Z scores of the bond lengths (or angles).

Mol	Type	Chain	Res	Link	Bond lengths			Bond angles		
					Counts	RMSZ	# $ Z  > 2$	Counts	RMSZ	# $ Z  > 2$
2	ANP	A	400	3	27,33,33	2.03	6 (22%)	30,52,52	2.20	9 (30%)
4	77D	A	500	-	27,34,34	1.40	2 (7%)	30,50,50	1.36	5 (16%)
2	ANP	B	400	3	27,33,33	2.08	8 (29%)	30,52,52	1.92	6 (20%)
4	77D	B	500	-	27,34,34	1.50	2 (7%)	30,50,50	1.32	4 (13%)

In the following table, the Chirals column lists the number of chiral outliers, the number of chiral centers analysed, the number of these observed in the model and the number defined in the chemical component dictionary. Similar counts are reported in the Torsion and Rings columns. '-' means no outliers of that kind were identified.

Mol	Type	Chain	Res	Link	Chirals	Torsions	Rings
2	ANP	A	400	3	-	0/12/38/38	0/3/3/3
4	77D	A	500	-	-	0/6/35/35	0/3/4/4
2	ANP	B	400	3	-	0/12/38/38	0/3/3/3
4	77D	B	500	-	-	0/6/35/35	0/3/4/4

All (18) bond length outliers are listed below:

Mol	Chain	Res	Type	Atoms	Z	Observed(Å)	Ideal(Å)
4	B	500	77D	C29-C30	-5.06	1.44	1.50
4	A	500	77D	C29-C30	-4.45	1.44	1.50
4	A	500	77D	C08-C09	-4.26	1.44	1.51
4	B	500	77D	C08-C09	-4.17	1.44	1.51
2	B	400	ANP	PB-O2B	-2.34	1.50	1.56
2	A	400	ANP	PB-O2B	-2.32	1.50	1.56
2	B	400	ANP	PG-O2G	-2.05	1.51	1.56
2	B	400	ANP	PB-O3A	2.44	1.62	1.59
2	B	400	ANP	C5-C4	3.11	1.47	1.40
2	A	400	ANP	C5-C4	3.24	1.47	1.40
2	B	400	ANP	PB-O1B	3.84	1.50	1.46
2	A	400	ANP	PB-O1B	3.86	1.50	1.46
2	A	400	ANP	PG-O1G	3.93	1.50	1.46
2	B	400	ANP	PG-O1G	4.06	1.50	1.46
2	B	400	ANP	PB-N3B	4.39	1.75	1.63
2	A	400	ANP	PB-N3B	4.57	1.75	1.63
2	B	400	ANP	PG-N3B	4.90	1.76	1.63
2	A	400	ANP	PG-N3B	5.01	1.76	1.63

All (24) bond angle outliers are listed below:

Mol	Chain	Res	Type	Atoms	Z	Observed(°)	Ideal(°)
2	A	400	ANP	N3-C2-N1	-8.18	122.63	128.89
2	B	400	ANP	N3-C2-N1	-6.28	124.08	128.89
2	A	400	ANP	O1G-PG-N3B	-3.80	106.06	111.90
2	B	400	ANP	C2'-C1'-N9	-3.50	108.95	114.29
4	B	500	77D	C29-C30-N01	-3.41	112.58	119.78
4	A	500	77D	C11-C12-N13	-3.17	105.81	112.31
2	B	400	ANP	C4-C5-N7	-3.12	106.61	109.48
2	A	400	ANP	C2'-C1'-N9	-3.01	109.69	114.29
4	A	500	77D	C29-C30-N01	-2.98	113.50	119.78
2	A	400	ANP	C4-C5-N7	-2.89	106.82	109.48
4	A	500	77D	C08-C09-N10	-2.44	112.32	115.36
2	A	400	ANP	PA-O3A-PB	-2.35	124.80	132.67
4	B	500	77D	C08-C09-N10	-2.31	112.49	115.36
4	B	500	77D	C11-N10-C09	-2.10	119.90	122.52
2	A	400	ANP	C1'-N9-C4	-2.06	123.83	126.94
4	A	500	77D	C23-C21-C20	-2.04	121.37	123.40
4	B	500	77D	C11-C12-N13	-2.02	108.18	112.31
2	A	400	ANP	O1B-PB-N3B	-2.01	108.82	111.90
2	B	400	ANP	O4'-C1'-N9	2.03	112.34	108.10
2	A	400	ANP	C2-N1-C6	2.08	122.48	118.77

*Continued on next page...*



*Continued from previous page...*

Mol	Chain	Res	Type	Atoms	Z	Observed( $^{\circ}$ )	Ideal( $^{\circ}$ )
4	A	500	77D	F22-C21-C20	2.33	119.84	117.50
2	B	400	ANP	O3G-PG-O2G	2.45	114.86	107.58
2	A	400	ANP	O2B-PB-O1B	3.24	116.77	110.00
2	B	400	ANP	O2B-PB-O1B	3.76	117.86	110.00

There are no chirality outliers.

There are no torsion outliers.

There are no ring outliers.

3 monomers are involved in 8 short contacts:

Mol	Chain	Res	Type	Clashes	Symm-Clashes
2	A	400	ANP	1	0
4	A	500	77D	5	0
4	B	500	77D	2	0

## 5.7 Other polymers [i](#)

There are no such residues in this entry.

## 5.8 Polymer linkage issues [i](#)

There are no chain breaks in this entry.

## 6 Fit of model and data ⓘ

### 6.1 Protein, DNA and RNA chains ⓘ

In the following table, the column labelled ‘#RSRZ> 2’ contains the number (and percentage) of RSRZ outliers, followed by percent RSRZ outliers for the chain as percentile scores relative to all X-ray entries and entries of similar resolution. The OWAB column contains the minimum, median, 95<sup>th</sup> percentile and maximum values of the occupancy-weighted average B-factor per residue. The column labelled ‘Q< 0.9’ lists the number of (and percentage) of residues with an average occupancy less than 0.9.

Mol	Chain	Analysed	<RSRZ>	#RSRZ>2		OWAB(Å <sup>2</sup> )	Q<0.9
1	A	292/304 (96%)	0.52	28 (9%)	10 15	22, 42, 65, 72	8 (2%)
1	B	295/304 (97%)	0.52	30 (10%)	9 13	22, 43, 65, 73	10 (3%)
All	All	587/608 (96%)	0.52	58 (9%)	9 14	22, 42, 65, 73	18 (3%)

All (58) RSRZ outliers are listed below:

Mol	Chain	Res	Type	RSRZ
1	B	239	HIS	6.5
1	B	269	SER	6.1
1	A	103	ILE	5.7
1	A	106	ALA	5.7
1	B	217	ASP	4.9
1	A	101	LEU	4.3
1	A	206	LEU	4.2
1	A	191	VAL	4.2
1	B	264	GLY	4.2
1	A	79	GLY	3.9
1	A	100	HIS	3.9
1	A	196	ILE	3.8
1	B	206	LEU	3.7
1	B	44	LEU	3.6
1	A	173	VAL	3.6
1	A	207[A]	CYS	3.4
1	B	214	GLN	3.3
1	B	207[A]	CYS	3.2
1	A	224	VAL	3.2
1	B	102	GLU	3.2
1	B	106	ALA	3.0
1	A	77	GLY	3.0
1	A	102	GLU	3.0
1	B	240	TYR	2.9

*Continued on next page...*

*Continued from previous page...*

Mol	Chain	Res	Type	RSRZ
1	B	127	VAL	2.9
1	A	76	ALA	2.8
1	A	169	VAL	2.8
1	A	78	ASN	2.8
1	B	101	LEU	2.8
1	B	137	GLY	2.8
1	B	216	ILE	2.6
1	A	137	GLY	2.6
1	B	128	GLY	2.6
1	B	131	GLY	2.6
1	B	47	ARG	2.6
1	A	197	LEU	2.5
1	B	134	TYR	2.4
1	B	42	MET	2.4
1	A	204	ILE	2.3
1	B	213	GLY	2.3
1	A	63	LEU	2.2
1	B	332	ASP	2.2
1	A	151	LEU	2.2
1	A	58[A]	GLN	2.2
1	A	83	PHE	2.2
1	B	70	LYS	2.2
1	B	238	THR	2.2
1	B	126	ILE	2.1
1	B	136	ASP	2.1
1	B	270	MET	2.1
1	A	127	VAL	2.1
1	A	126	ILE	2.1
1	B	196	ILE	2.1
1	B	331	VAL	2.1
1	A	142	CYS	2.1
1	B	66	ASP	2.0
1	A	252	SER	2.0
1	A	238	THR	2.0

## 6.2 Non-standard residues in protein, DNA, RNA chains ⓘ

There are no non-standard protein/DNA/RNA residues in this entry.

### 6.3 Carbohydrates [i](#)

There are no carbohydrates in this entry.

### 6.4 Ligands [i](#)

In the following table, the Atoms column lists the number of modelled atoms in the group and the number defined in the chemical component dictionary. LLDF column lists the quality of electron density of the group with respect to its neighbouring residues in protein, DNA or RNA chains. The B-factors column lists the minimum, median, 95<sup>th</sup> percentile and maximum values of B factors of atoms in the group. The column labelled 'Q< 0.9' lists the number of atoms with occupancy less than 0.9.

Mol	Type	Chain	Res	Atoms	RSCC	RSR	LLDF	B-factors( $\text{\AA}^2$ )	Q<0.9
4	77D	A	500	31/31	0.98	0.12	-1.22	37,41,42,44	0
2	ANP	B	400	31/31	0.98	0.10	-1.34	30,37,40,43	0
2	ANP	A	400	31/31	0.97	0.11	-1.62	34,39,42,43	0
4	77D	B	500	31/31	0.97	0.13	-1.65	35,40,43,45	0
3	MG	A	401	1/1	0.95	0.07	-	40,40,40,40	0
3	MG	B	401	1/1	0.96	0.06	-	32,32,32,32	0

### 6.5 Other polymers [i](#)

There are no such residues in this entry.