



# Full wwPDB X-ray Structure Validation Report ⓘ

Feb 1, 2016 – 01:06 PM GMT

PDB ID : 3SXI  
Title : Crystal structure of sulfide:quinone oxidoreductase Cys128Ala variant from Acidithiobacillus ferrooxidans complexed with decylubiquinone  
Authors : Cherney, M.M.; Zhang, Y.; James, M.N.G.; Weiner, J.H.  
Deposited on : 2011-07-14  
Resolution : 2.18 Å(reported)

This is a Full wwPDB X-ray Structure Validation Report for a publicly released PDB entry.  
We welcome your comments at [validation@mail.wwpdb.org](mailto:validation@mail.wwpdb.org)  
A user guide is available at  
<http://wwpdb.org/validation/2016/XrayValidationReportHelp>  
with specific help available everywhere you see the ⓘ symbol.

---

The following versions of software and data (see [references ⓘ](#)) were used in the production of this report:

MolProbity : 4.02b-467  
Mogul : 1.7 (RC4), CSD as536be (2015)  
Xtriage (Phenix) : 1.9-1692  
EDS : rb-20026688  
Percentile statistics : 20151230.v01 (using entries in the PDB archive December 30th 2015)  
Refmac : 5.8.0135  
CCP4 : 6.5.0  
Ideal geometry (proteins) : Engh & Huber (2001)  
Ideal geometry (DNA, RNA) : Parkinson et al. (1996)  
Validation Pipeline (wwPDB-VP) : trunk26865

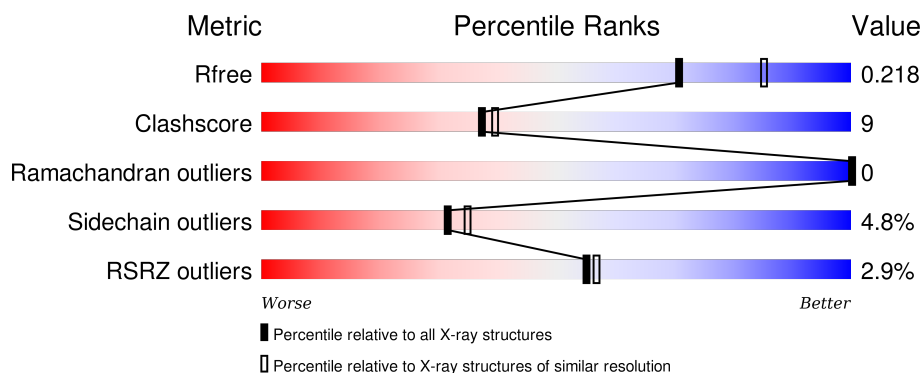
# 1 Overall quality at a glance

The following experimental techniques were used to determine the structure:

## *X-RAY DIFFRACTION*

The reported resolution of this entry is 2.18 Å.

Percentile scores (ranging between 0-100) for global validation metrics of the entry are shown in the following graphic. The table shows the number of entries on which the scores are based.



Metric	Whole archive (#Entries)	Similar resolution (#Entries, resolution range(Å))
$R_{free}$	91344	5130 (2.20-2.16)
Clashscore	102246	5965 (2.20-2.16)
Ramachandran outliers	100387	5863 (2.20-2.16)
Sidechain outliers	100360	5864 (2.20-2.16)
RSRZ outliers	91569	5142 (2.20-2.16)

The table below summarises the geometric issues observed across the polymeric chains and their fit to the electron density. The red, orange, yellow and green segments on the lower bar indicate the fraction of residues that contain outliers for  $\geq 3$ , 2, 1 and 0 types of geometric quality criteria. A grey segment represents the fraction of residues that are not modelled. The numeric value for each fraction is indicated below the corresponding segment, with a dot representing fractions  $\leq 5\%$ . The upper red bar (where present) indicates the fraction of residues that have poor fit to the electron density. The numeric value is given above the bar.

Mol	Chain	Length	Quality of chain
1	A	437	

The following table lists non-polymeric compounds, carbohydrate monomers and non-standard residues in protein, DNA, RNA chains that are outliers for geometric or electron-density-fit criteria:

Mol	Type	Chain	Res	Chirality	Geometry	Clashes	Electron density
4	DCQ	A	502	-	-	-	X

*Continued on next page...*

*Continued from previous page...*

Mol	Type	Chain	Res	Chirality	Geometry	Clashes	Electron density
6	H2S	A	507	-	-	-	X
6	H2S	A	508	-	-	-	X

## 2 Entry composition [i](#)

There are 7 unique types of molecules in this entry. The entry contains 3627 atoms, of which 0 are hydrogens and 0 are deuteriums.

In the tables below, the ZeroOcc column contains the number of atoms modelled with zero occupancy, the AltConf column contains the number of residues with at least one atom in alternate conformation and the Trace column contains the number of residues modelled with at most 2 atoms.

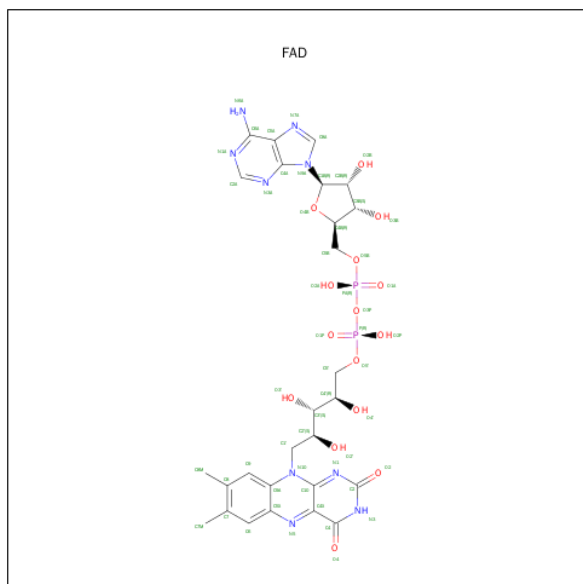
- Molecule 1 is a protein called Sulfide-quinone reductase, putative.

Mol	Chain	Residues	Atoms					ZeroOcc	AltConf	Trace
			Total	C	N	O	S			
1	A	421	3232	2076	541	592	23	0	3	0

There are 5 discrepancies between the modelled and reference sequences:

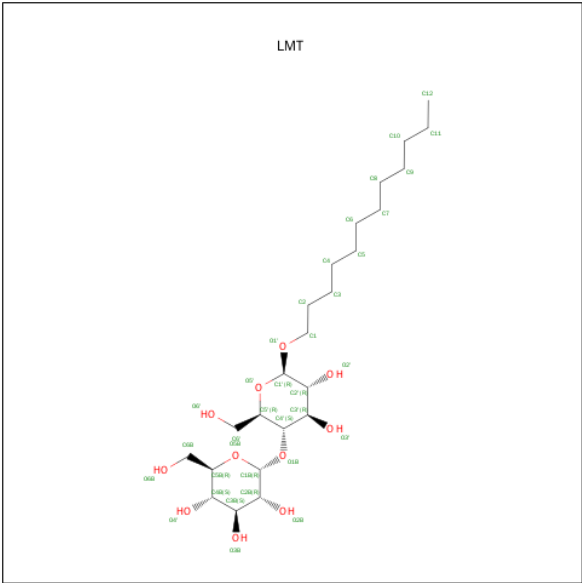
Chain	Residue	Modelled	Actual	Comment	Reference
A	-2	MET	-	EXPRESSION TAG	UNP B7JBP8
A	-1	ARG	-	EXPRESSION TAG	UNP B7JBP8
A	0	GLY	-	EXPRESSION TAG	UNP B7JBP8
A	1	SER	-	EXPRESSION TAG	UNP B7JBP8
A	128	ALA	CYS	ENGINEERED MUTATION	UNP B7JBP8

- Molecule 2 is FLAVIN-ADENINE DINUCLEOTIDE (three-letter code: FAD) (formula:  $C_{27}H_{33}N_9O_{15}P_2$ ).



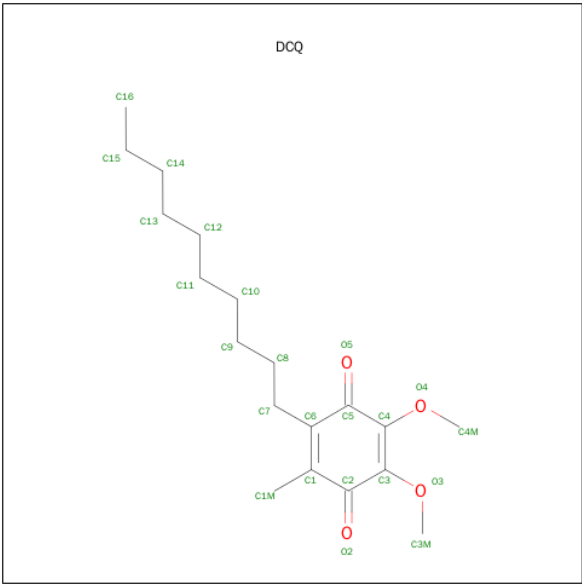
Mol	Chain	Residues	Atoms					ZeroOcc	AltConf
2	A	1	Total	C	N	O	P	0	0
			53	27	9	15	2		

- Molecule 3 is DODECYL-BETA-D-MALTOSE (three-letter code: LMT) (formula: C<sub>24</sub>H<sub>46</sub>O<sub>11</sub>).



Mol	Chain	Residues	Atoms			ZeroOcc	AltConf
3	A	1	Total	C	O	0	0
			35	24	11		

- Molecule 4 is 2-DECYL-5,6-DIMETHOXY-3-METHYLCYCLOHEXA-2,5-DIENE-1,4-DIONE (three-letter code: DCQ) (formula: C<sub>19</sub>H<sub>30</sub>O<sub>4</sub>).



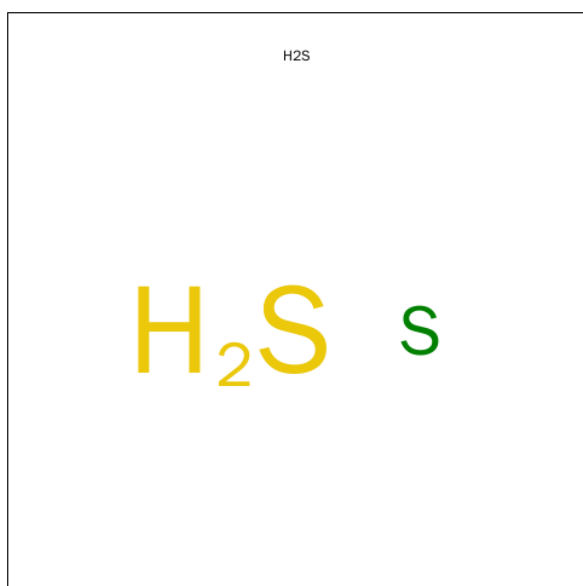
Mol	Chain	Residues	Atoms			ZeroOcc	AltConf
4	A	1	Total	C	O	0	0
			23	19	4		

- Molecule 5 is SULFATE ION (three-letter code: SO<sub>4</sub>) (formula: O<sub>4</sub>S).



Mol	Chain	Residues	Atoms			ZeroOcc	AltConf
5	A	1	Total	O	S	0	0
			5	4	1		

- Molecule 6 is HYDROSULFURIC ACID (three-letter code: H<sub>2</sub>S) (formula: H<sub>2</sub>S).



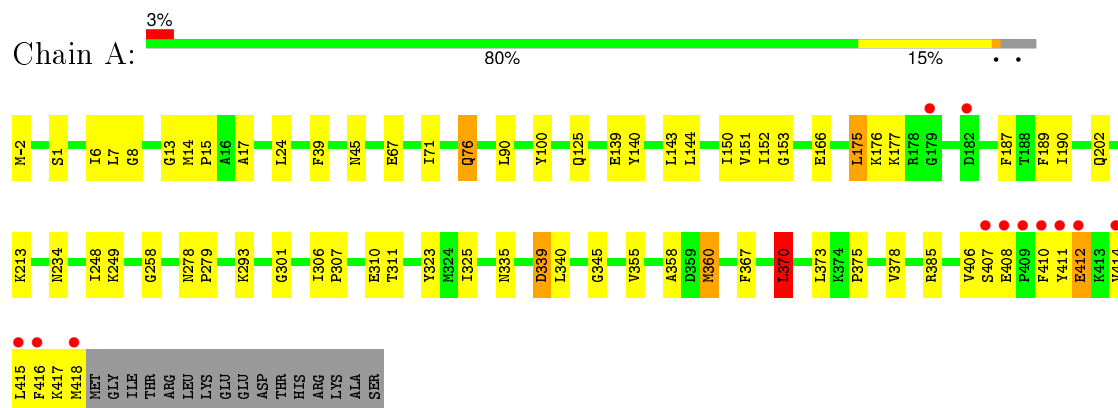
Mol	Chain	Residues	Atoms	ZeroOcc	AltConf
6	A	1	Total S 1 1	0	0
6	A	1	Total S 1 1	0	0
6	A	1	Total S 1 1	0	0
6	A	1	Total S 1 1	0	0

- Molecule 7 is water.

Mol	Chain	Residues	Atoms	ZeroOcc	AltConf
7	A	275	Total O 275 275	0	0



- Molecule 1: Sulfide-quinone reductase, putative





## 4 Data and refinement statistics

Property	Value	Source
Space group	P 6 <sub>2</sub> 2 2	Depositor
Cell constants a, b, c, $\alpha$ , $\beta$ , $\gamma$	150.09 Å   150.09 Å   81.46 Å 90.00°   90.00°   120.00°	Depositor
Resolution (Å)	49.13 – 2.18 49.13 – 2.18	Depositor EDS
% Data completeness (in resolution range)	99.0 (49.13-2.18) 99.0 (49.13-2.18)	Depositor EDS
$R_{merge}$	0.12	Depositor
$R_{sym}$	0.12	Depositor
$\langle I/\sigma(I) \rangle$ <sup>1</sup>	2.29 (at 2.18 Å)	Xtriage
Refinement program	PHENIX (phenix.refine: 1.7_650)	Depositor
R, $R_{free}$	0.167 , 0.220 0.166 , 0.218	Depositor DCC
$R_{free}$ test set	1441 reflections (5.33%)	DCC
Wilson B-factor (Å <sup>2</sup> )	33.5	Xtriage
Anisotropy	0.317	Xtriage
Bulk solvent $k_{sol}$ (e/Å <sup>3</sup> ), $B_{sol}$ (Å <sup>2</sup> )	0.34 , 46.9	EDS
Estimated twinning fraction	No twinning to report.	Xtriage
L-test for twinning <sup>2</sup>	$\langle  L  \rangle = 0.50$ , $\langle L^2 \rangle = 0.33$	Xtriage
Outliers	0 of 28461 reflections	Xtriage
$F_o, F_c$ correlation	0.97	EDS
Total number of atoms	3627	wwPDB-VP
Average B, all atoms (Å <sup>2</sup> )	39.0	wwPDB-VP

Xtriage's analysis on translational NCS is as follows: *The largest off-origin peak in the Patterson function is 5.73% of the height of the origin peak. No significant pseudotranslation is detected.*

<sup>1</sup>Intensities estimated from amplitudes.

<sup>2</sup>Theoretical values of  $\langle |L| \rangle$ ,  $\langle L^2 \rangle$  for acentric reflections are 0.5, 0.375 respectively for untwinned datasets, and 0.333, 0.2 for perfectly twinned datasets.

## 5 Model quality [i](#)

### 5.1 Standard geometry [i](#)

Bond lengths and bond angles in the following residue types are not validated in this section: DCQ, LMT, SO4, H2S, FAD

The Z score for a bond length (or angle) is the number of standard deviations the observed value is removed from the expected value. A bond length (or angle) with  $|Z| > 5$  is considered an outlier worth inspection. RMSZ is the root-mean-square of all Z scores of the bond lengths (or angles).

Mol	Chain	Bond lengths		Bond angles	
		RMSZ	$\# Z  > 5$	RMSZ	$\# Z  > 5$
1	A	0.37	0/3323	0.54	1/4496 (0.0%)

There are no bond length outliers.

All (1) bond angle outliers are listed below:

Mol	Chain	Res	Type	Atoms	Z	Observed( $^{\circ}$ )	Ideal( $^{\circ}$ )
1	A	370	LEU	CA-CB-CG	5.75	128.52	115.30

There are no chirality outliers.

There are no planarity outliers.

### 5.2 Too-close contacts [i](#)

In the following table, the Non-H and H(model) columns list the number of non-hydrogen atoms and hydrogen atoms in the chain respectively. The H(added) column lists the number of hydrogen atoms added and optimized by MolProbity. The Clashes column lists the number of clashes within the asymmetric unit, whereas Symm-Clashes lists symmetry related clashes.

Mol	Chain	Non-H	H(model)	H(added)	Clashes	Symm-Clashes
1	A	3232	0	3222	60	0
2	A	53	0	31	0	0
3	A	35	0	46	4	0
4	A	23	0	30	6	0
5	A	5	0	0	0	0
6	A	4	0	0	0	0
7	A	275	0	0	9	0
All	All	3627	0	3329	62	0

The all-atom clashscore is defined as the number of clashes found per 1000 atoms (including

hydrogen atoms). The all-atom clashscore for this structure is 9.

All (62) close contacts within the same asymmetric unit are listed below, sorted by their clash magnitude.

Atom-1	Atom-2	Interatomic distance (Å)	Clash overlap (Å)
1:A:407:SER:N	1:A:408:GLU:HB2	1.74	1.01
1:A:407:SER:H	1:A:408:GLU:HB2	1.39	0.87
1:A:406:VAL:HG13	1:A:408:GLU:HB3	1.63	0.81
1:A:76:GLN:HG2	1:A:90:LEU:HB3	1.63	0.81
1:A:6:ILE:HD13	1:A:17:ALA:HA	1.70	0.73
1:A:370:LEU:HD13	1:A:378:VAL:HB	1.71	0.72
1:A:407:SER:HB2	1:A:408:GLU:HA	1.73	0.70
1:A:418:MET:HB2	7:A:775:HOH:O	1.94	0.66
1:A:385:ARG:HD2	7:A:656:HOH:O	1.97	0.63
3:A:501:LMT:H6D	7:A:662:HOH:O	1.97	0.63
1:A:407:SER:CA	1:A:408:GLU:HB2	2.29	0.63
1:A:67:GLU:HA	7:A:727:HOH:O	1.97	0.63
1:A:355:VAL:HG21	4:A:502:DCQ:H14	1.81	0.62
1:A:411:TYR:OH	4:A:502:DCQ:H1MA	2.00	0.61
1:A:407:SER:HB2	1:A:408:GLU:CA	2.32	0.59
1:A:-2:MET:HG3	1:A:1:SER:HB3	1.83	0.59
1:A:411:TYR:CZ	4:A:502:DCQ:H1MA	2.38	0.59
1:A:166:GLU:HG3	1:A:360:MET:CE	2.35	0.56
1:A:166:GLU:HG3	1:A:360:MET:HE1	1.87	0.56
1:A:14:MET:HB2	1:A:15:PRO:HD3	1.88	0.56
1:A:8:GLY:O	1:A:13:GLY:HA3	2.06	0.55
1:A:278:ASN:HB2	1:A:279:PRO:CD	2.37	0.55
1:A:323:TYR:N	4:A:502:DCQ:H1MB	2.22	0.54
1:A:140:TYR:OH	1:A:175:LEU:HD13	2.07	0.54
1:A:367:PHE:CE1	3:A:501:LMT:H111	2.43	0.53
1:A:301:GLY:HA2	1:A:325:ILE:HG12	1.89	0.53
1:A:415:LEU:C	1:A:417:LYS:H	2.11	0.53
1:A:248:ILE:O	1:A:249:LYS:HB3	2.09	0.53
1:A:360:MET:HA	1:A:360:MET:HE3	1.90	0.52
1:A:367:PHE:CD1	3:A:501:LMT:H111	2.46	0.50
1:A:335:ASN:OD1	1:A:345:GLY:HA3	2.12	0.49
1:A:406:VAL:CG1	1:A:408:GLU:HB3	2.40	0.49
1:A:166:GLU:HA	1:A:360:MET:HE2	1.94	0.48
1:A:412:GLU:O	1:A:415:LEU:HG	2.13	0.48
1:A:143:LEU:HD21	1:A:150:ILE:HD11	1.96	0.48
1:A:6:ILE:CD1	1:A:17:ALA:HA	2.41	0.48
1:A:415:LEU:C	1:A:417:LYS:N	2.68	0.47
1:A:14:MET:CB	1:A:15:PRO:HD3	2.45	0.46

*Continued on next page...*

*Continued from previous page...*

Atom-1	Atom-2	Interatomic distance (Å)	Clash overlap (Å)
1:A:411:TYR:CE2	4:A:502:DCQ:H1MA	2.50	0.46
1:A:71:ILE:N	7:A:727:HOH:O	2.49	0.46
1:A:176:LYS:HE3	7:A:537:HOH:O	2.14	0.46
1:A:14:MET:HG3	1:A:39:PHE:CD1	2.51	0.45
1:A:415:LEU:C	1:A:415:LEU:HD12	2.37	0.45
1:A:76:GLN:HB2	1:A:76:GLN:HE21	1.52	0.45
1:A:151:VAL:O	1:A:258:GLY:HA2	2.16	0.44
1:A:6:ILE:HD13	1:A:17:ALA:CA	2.44	0.44
1:A:370:LEU:CD1	1:A:378:VAL:HB	2.44	0.44
1:A:213:LYS:HD3	7:A:662:HOH:O	2.18	0.44
1:A:152:ILE:O	1:A:189:PHE:HA	2.18	0.44
1:A:279:PRO:HD2	7:A:678:HOH:O	2.17	0.44
1:A:153:GLY:HA3	1:A:190:ILE:O	2.19	0.43
1:A:340:LEU:HA	1:A:340:LEU:HD23	1.78	0.43
1:A:412:GLU:C	1:A:414:VAL:H	2.23	0.42
1:A:306:ILE:HA	1:A:307:PRO:HD3	1.89	0.42
4:A:502:DCQ:H7	4:A:502:DCQ:H1M	1.59	0.42
1:A:234:ASN:HB3	7:A:675:HOH:O	2.19	0.42
1:A:310:GLU:HG2	1:A:311:THR:N	2.35	0.41
1:A:125:GLN:HG3	1:A:139:GLU:HG3	2.03	0.41
1:A:358:ALA:CB	3:A:501:LMT:H82	2.50	0.40
1:A:177:LYS:HB2	1:A:177:LYS:HE2	1.79	0.40
1:A:100:TYR:OH	1:A:339:ASP:HB3	2.21	0.40

There are no symmetry-related clashes.

## 5.3 Torsion angles [i](#)

### 5.3.1 Protein backbone [i](#)

In the following table, the Percentiles column shows the percent Ramachandran outliers of the chain as a percentile score with respect to all X-ray entries followed by that with respect to entries of similar resolution.

The Analysed column shows the number of residues for which the backbone conformation was analysed, and the total number of residues.

Mol	Chain	Analysed	Favoured	Allowed	Outliers	Percentiles	
1	A	422/437 (97%)	400 (95%)	22 (5%)	0	100	100

There are no Ramachandran outliers to report.

### 5.3.2 Protein sidechains ⓘ

In the following table, the Percentiles column shows the percent sidechain outliers of the chain as a percentile score with respect to all X-ray entries followed by that with respect to entries of similar resolution.

The Analysed column shows the number of residues for which the sidechain conformation was analysed, and the total number of residues.

Mol	Chain	Analysed	Rotameric	Outliers	Percentiles	
1	A	335/346 (97%)	319 (95%)	16 (5%)	31	35

All (16) residues with a non-rotameric sidechain are listed below:

Mol	Chain	Res	Type
1	A	7	LEU
1	A	24	LEU
1	A	76	GLN
1	A	144	LEU
1	A	175	LEU
1	A	187	PHE
1	A	202	GLN
1	A	293	LYS
1	A	339	ASP
1	A	360	MET
1	A	370	LEU
1	A	373	LEU
1	A	375	PRO
1	A	410	PHE
1	A	412	GLU
1	A	416	PHE

Some sidechains can be flipped to improve hydrogen bonding and reduce clashes. All (1) such sidechains are listed below:

Mol	Chain	Res	Type
1	A	288	HIS

### 5.3.3 RNA ⓘ

There are no RNA molecules in this entry.

## 5.4 Non-standard residues in protein, DNA, RNA chains ⓘ

There are no non-standard protein/DNA/RNA residues in this entry.

## 5.5 Carbohydrates ⓘ

There are no carbohydrates in this entry.

## 5.6 Ligand geometry ⓘ

Of 8 ligands modelled in this entry, 4 are modelled with single atom - leaving 4 for Mogul analysis.

In the following table, the Counts columns list the number of bonds (or angles) for which Mogul statistics could be retrieved, the number of bonds (or angles) that are observed in the model and the number of bonds (or angles) that are defined in the chemical component dictionary. The Link column lists molecule types, if any, to which the group is linked. The Z score for a bond length (or angle) is the number of standard deviations the observed value is removed from the expected value. A bond length (or angle) with  $|Z| > 2$  is considered an outlier worth inspection. RMSZ is the root-mean-square of all Z scores of the bond lengths (or angles).

Mol	Type	Chain	Res	Link	Bond lengths			Bond angles		
					Counts	RMSZ	# $ Z  > 2$	Counts	RMSZ	# $ Z  > 2$
2	FAD	A	500	-	48,58,58	1.16	6 (12%)	54,89,89	2.03	8 (14%)
3	LMT	A	501	-	36,36,36	1.23	3 (8%)	47,47,47	1.41	6 (12%)
4	DCQ	A	502	-	23,23,23	2.43	7 (30%)	26,29,29	0.98	1 (3%)
5	SO4	A	503	-	4,4,4	0.19	0	6,6,6	0.09	0

In the following table, the Chirals column lists the number of chiral outliers, the number of chiral centers analysed, the number of these observed in the model and the number defined in the chemical component dictionary. Similar counts are reported in the Torsion and Rings columns. '-' means no outliers of that kind were identified.

Mol	Type	Chain	Res	Link	Chirals	Torsions	Rings
2	FAD	A	500	-	-	0/30/50/50	0/6/6/6
3	LMT	A	501	-	-	0/21/61/61	0/2/2/2
4	DCQ	A	502	-	-	0/14/38/38	0/1/1/1
5	SO4	A	503	-	-	0/0/0/0	0/0/0/0

All (16) bond length outliers are listed below:

Mol	Chain	Res	Type	Atoms	Z	Observed(Å)	Ideal(Å)
3	A	501	LMT	C3'-C4'	-3.64	1.42	1.52

*Continued on next page...*

*Continued from previous page...*

Mol	Chain	Res	Type	Atoms	Z	Observed(Å)	Ideal(Å)
4	A	502	DCQ	C4-C5	-3.16	1.39	1.48
4	A	502	DCQ	C3-C2	-3.08	1.40	1.48
4	A	502	DCQ	O4-C4M	-2.78	1.38	1.45
4	A	502	DCQ	O3-C3M	-2.65	1.38	1.45
4	A	502	DCQ	C6-C5	-2.49	1.39	1.46
2	A	500	FAD	C5X-N5	2.02	1.38	1.35
2	A	500	FAD	C2A-N1A	2.21	1.38	1.33
3	A	501	LMT	O5'-C5'	2.29	1.50	1.44
2	A	500	FAD	C1'-N10	2.53	1.51	1.48
2	A	500	FAD	C4-N3	2.68	1.38	1.33
2	A	500	FAD	C2A-N3A	2.94	1.37	1.32
2	A	500	FAD	C4X-N5	3.51	1.38	1.33
3	A	501	LMT	O5B-C1B	4.09	1.52	1.41
4	A	502	DCQ	O5-C5	6.40	1.38	1.23
4	A	502	DCQ	O2-C2	6.71	1.38	1.23

All (15) bond angle outliers are listed below:

Mol	Chain	Res	Type	Atoms	Z	Observed(°)	Ideal(°)
2	A	500	FAD	N3A-C2A-N1A	-10.21	121.08	128.89
2	A	500	FAD	C4X-C4-N3	-3.07	119.39	123.59
4	A	502	DCQ	C1M-C1-C6	-2.61	118.51	124.10
2	A	500	FAD	P-O3P-PA	-2.48	125.76	132.73
2	A	500	FAD	C4A-C5A-N7A	-2.24	107.42	109.48
3	A	501	LMT	O6B-C6B-C5B	2.07	118.19	111.33
2	A	500	FAD	C4X-N5-C5X	2.23	119.32	116.76
3	A	501	LMT	O5B-C5B-C6B	2.24	112.02	106.36
3	A	501	LMT	C2'-C3'-C4'	2.29	114.64	109.60
3	A	501	LMT	O1'-C1-C2	2.58	120.15	109.88
2	A	500	FAD	C5X-C9A-N10	2.99	119.89	117.62
2	A	500	FAD	C1'-N10-C9A	3.03	122.26	118.86
3	A	501	LMT	O5'-C5'-C4'	3.84	117.87	109.75
3	A	501	LMT	C1-O1'-C1'	4.62	122.03	113.94
2	A	500	FAD	C4-N3-C2	6.63	120.98	115.25

There are no chirality outliers.

There are no torsion outliers.

There are no ring outliers.

2 monomers are involved in 10 short contacts:

Mol	Chain	Res	Type	Clashes	Symm-Clashes
3	A	501	LMT	4	0
4	A	502	DCQ	6	0

## 5.7 Other polymers [i](#)

There are no such residues in this entry.

## 5.8 Polymer linkage issues [i](#)

There are no chain breaks in this entry.



## 6 Fit of model and data [i](#)

### 6.1 Protein, DNA and RNA chains [i](#)

In the following table, the column labelled ‘#RSRZ> 2’ contains the number (and percentage) of RSRZ outliers, followed by percent RSRZ outliers for the chain as percentile scores relative to all X-ray entries and entries of similar resolution. The OWAB column contains the minimum, median, 95<sup>th</sup> percentile and maximum values of the occupancy-weighted average B-factor per residue. The column labelled ‘Q< 0.9’ lists the number of (and percentage) of residues with an average occupancy less than 0.9.

Mol	Chain	Analysed	<RSRZ>	#RSRZ>2	OWAB(Å <sup>2</sup> )	Q<0.9
1	A	421/437 (96%)	-0.43	12 (2%) 55 57	20, 33, 69, 115	0

All (12) RSRZ outliers are listed below:

Mol	Chain	Res	Type	RSRZ
1	A	415	LEU	5.9
1	A	416	PHE	2.8
1	A	411	TYR	2.7
1	A	410	PHE	2.7
1	A	418	MET	2.7
1	A	412	GLU	2.6
1	A	414	VAL	2.6
1	A	407	SER	2.4
1	A	179	GLY	2.4
1	A	182	ASP	2.4
1	A	408	GLU	2.4
1	A	409	PRO	2.2

### 6.2 Non-standard residues in protein, DNA, RNA chains [i](#)

There are no non-standard protein/DNA/RNA residues in this entry.

### 6.3 Carbohydrates [i](#)

There are no carbohydrates in this entry.

### 6.4 Ligands [i](#)

In the following table, the Atoms column lists the number of modelled atoms in the group and the number defined in the chemical component dictionary. LLDF column lists the quality of electron

density of the group with respect to its neighbouring residues in protein, DNA or RNA chains. The B-factors column lists the minimum, median, 95<sup>th</sup> percentile and maximum values of B factors of atoms in the group. The column labelled 'Q< 0.9' lists the number of atoms with occupancy less than 0.9.

Mol	Type	Chain	Res	Atoms	RSCC	RSR	LLDF	B-factors(Å <sup>2</sup> )	Q<0.9
6	H2S	A	508	1/1	0.85	0.14	4.81	66,66,66,66	0
4	DCQ	A	502	23/23	0.78	0.27	2.57	73,87,103,110	0
6	H2S	A	507	1/1	0.63	0.15	2.51	96,96,96,96	0
3	LMT	A	501	35/35	0.92	0.12	1.45	20,39,49,57	0
6	H2S	A	506	1/1	0.98	0.10	1.12	49,49,49,49	0
5	SO4	A	503	5/5	0.94	0.12	0.96	93,100,102,103	0
2	FAD	A	500	53/53	0.98	0.09	-0.36	16,25,29,34	0
6	H2S	A	505	1/1	0.97	0.08	-0.55	57,57,57,57	0

## 6.5 Other polymers

There are no such residues in this entry.