



Full wwPDB X-ray Structure Validation Report ⓘ

Jan 23, 2017 – 02:49 PM EST

PDB ID : 5T03
Title : Crystal structure of heparan sulfate 6-O-sulfotransferase with bound PAP and glucuronic acid containing hexasaccharide substrate
Authors : Pedersen, L.C.; Moon, A.F.; Krahn, J.M.; Liu, J.
Deposited on : 2016-08-15
Resolution : 2.10 Å(reported)

This is a Full wwPDB X-ray Structure Validation Report for a publicly released PDB entry.

We welcome your comments at validation@mail.wwpdb.org

A user guide is available at

<http://wwpdb.org/validation/2016/XrayValidationReportHelp>

with specific help available everywhere you see the ⓘ symbol.

The following versions of software and data (see [references ⓘ](#)) were used in the production of this report:

MolProbity : 4.02b-467
Mogul : 1.7.1 (RC1), CSD as537be (2016)
Xtriage (Phenix) : 1.9-1692
EDS : rb-20028442
Percentile statistics : 20151230.v01 (using entries in the PDB archive December 30th 2015)
Refmac : 5.8.0135
CCP4 : 6.5.0
Ideal geometry (proteins) : Engh & Huber (2001)
Ideal geometry (DNA, RNA) : Parkinson et al. (1996)
Validation Pipeline (wwPDB-VP) : rb-20028442

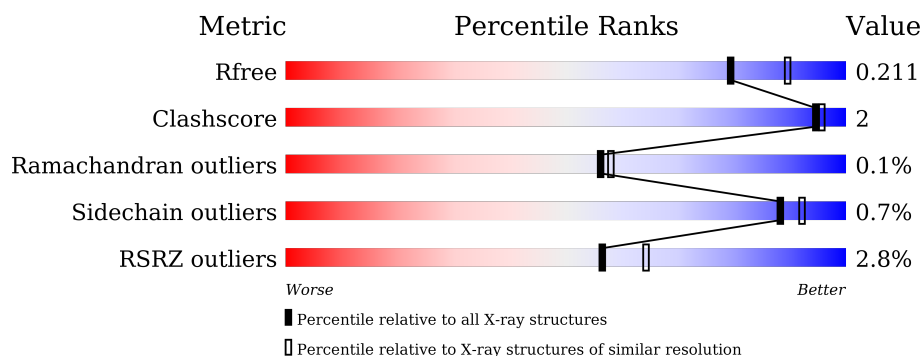
1 Overall quality at a glance

The following experimental techniques were used to determine the structure:

X-RAY DIFFRACTION

The reported resolution of this entry is 2.10 Å.

Percentile scores (ranging between 0-100) for global validation metrics of the entry are shown in the following graphic. The table shows the number of entries on which the scores are based.



Metric	Whole archive (#Entries)	Similar resolution (#Entries, resolution range(Å))
R_{free}	91344	3939 (2.10-2.10)
Clashscore	102246	4460 (2.10-2.10)
Ramachandran outliers	100387	4413 (2.10-2.10)
Sidechain outliers	100360	4414 (2.10-2.10)
RSRZ outliers	91569	3948 (2.10-2.10)

The table below summarises the geometric issues observed across the polymeric chains and their fit to the electron density. The red, orange, yellow and green segments on the lower bar indicate the fraction of residues that contain outliers for ≥ 3 , 2, 1 and 0 types of geometric quality criteria. A grey segment represents the fraction of residues that are not modelled. The numeric value for each fraction is indicated below the corresponding segment, with a dot representing fractions $\leq 5\%$. The upper red bar (where present) indicates the fraction of residues that have poor fit to the electron density. The numeric value is given above the bar.

Mol	Chain	Length	Quality of chain
1	A	692	<div> <div style="width: 93%;"></div> <div>93%</div> </div>
1	B	692	<div> <div style="width: 92%;"></div> <div>92%</div> </div>

The following table lists non-polymeric compounds, carbohydrate monomers and non-standard residues in protein, DNA, RNA chains that are outliers for geometric or electron-density-fit criteria:

Mol	Type	Chain	Res	Chirality	Geometry	Clashes	Electron density
10	TLA	A	1432	-	-	-	X
10	TLA	B	1423	-	-	-	X
5	NPO	A	1408	-	-	-	X
6	GLC	B	1409	-	-	-	X
7	EDO	A	1421	-	-	-	X
7	EDO	A	1422	-	-	-	X
7	EDO	B	1416	-	-	-	X
9	NA	B	1420	-	-	-	X

2 Entry composition

There are 11 unique types of molecules in this entry. The entry contains 11901 atoms, of which 0 are hydrogens and 0 are deuteriums.

In the tables below, the ZeroOcc column contains the number of atoms modelled with zero occupancy, the AltConf column contains the number of residues with at least one atom in alternate conformation and the Trace column contains the number of residues modelled with at most 2 atoms.

- Molecule 1 is a protein called maltose binding protein - heparan sulfate 6-O-sulfotransferase isoform 3 fusion protein.

Mol	Chain	Residues	Atoms					ZeroOcc	AltConf	Trace
1	A	670	Total	C	N	O	S	0	2	0
			5243	3338	891	988	26			
1	B	675	Total	C	N	O	S	0	6	0
			5285	3369	897	992	27			

There are 26 discrepancies between the modelled and reference sequences:

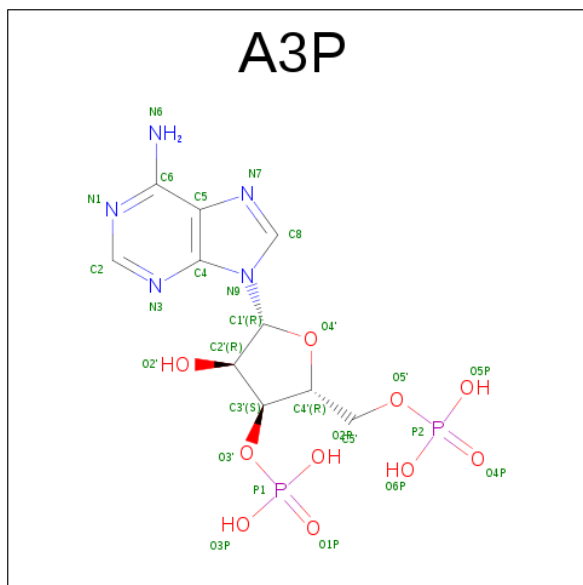
Chain	Residue	Modelled	Actual	Comment	Reference
A	0	MET	-	initiating methionine	UNP P0AEY0
A	82	ALA	ASP	engineered mutation	UNP P0AEY0
A	83	ALA	LYS	engineered mutation	UNP P0AEY0
A	172	ALA	GLU	engineered mutation	UNP P0AEY0
A	173	ALA	ASN	engineered mutation	UNP P0AEY0
A	239	ALA	LYS	engineered mutation	UNP P0AEY0
A	359	ALA	GLU	engineered mutation	UNP P0AEY0
A	362	ALA	LYS	engineered mutation	UNP P0AEY0
A	363	ALA	ASP	engineered mutation	UNP P0AEY0
A	367	ASN	-	linker	UNP P0AEY0
A	368	ALA	-	linker	UNP P0AEY0
A	369	ALA	-	linker	UNP P0AEY0
A	370	ALA	-	linker	UNP P0AEY0
B	0	MET	-	initiating methionine	UNP P0AEY0
B	82	ALA	ASP	engineered mutation	UNP P0AEY0
B	83	ALA	LYS	engineered mutation	UNP P0AEY0
B	172	ALA	GLU	engineered mutation	UNP P0AEY0
B	173	ALA	ASN	engineered mutation	UNP P0AEY0
B	239	ALA	LYS	engineered mutation	UNP P0AEY0
B	359	ALA	GLU	engineered mutation	UNP P0AEY0
B	362	ALA	LYS	engineered mutation	UNP P0AEY0
B	363	ALA	ASP	engineered mutation	UNP P0AEY0
B	367	ASN	-	linker	UNP P0AEY0
B	368	ALA	-	linker	UNP P0AEY0

Continued on next page...

Continued from previous page...

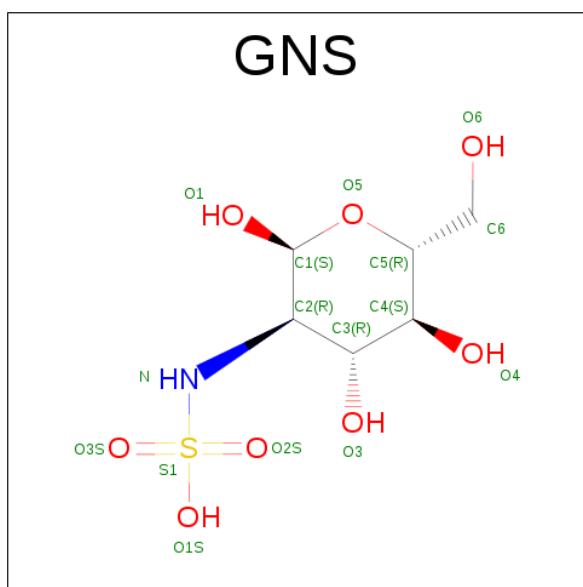
Chain	Residue	Modelled	Actual	Comment	Reference
B	369	ALA	-	linker	UNP P0AEY0
B	370	ALA	-	linker	UNP P0AEY0

- Molecule 2 is ADENOSINE-3'-5'-DIPHOSPHATE (three-letter code: A3P) (formula: $C_{10}H_{15}N_5O_{10}P_2$).



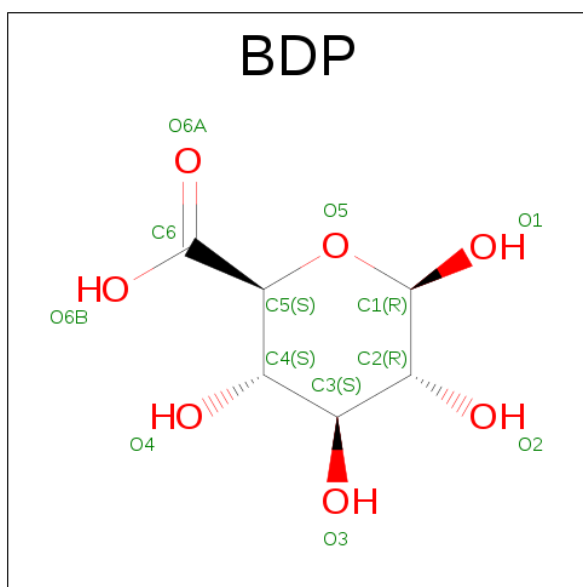
Mol	Chain	Residues	Atoms					ZeroOcc	AltConf
2	A	1	Total	C	N	O	P	0	0
			27	10	5	10	2		
2	B	1	Total	C	N	O	P	0	0
			27	10	5	10	2		

- Molecule 3 is N-SULFO-ALPHA-D-GLUCOSAMINE (three-letter code: GNS) (formula: $C_6H_{13}NO_8S$).



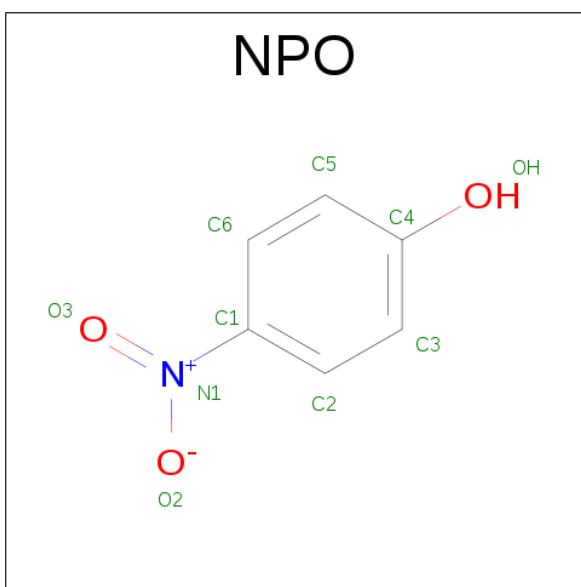
Mol	Chain	Residues	Atoms					ZeroOcc	AltConf
3	A	1	Total	C	N	O	S	0	0
			15	6	1	7	1		
3	A	1	Total	C	N	O	S	0	0
			15	6	1	7	1		
3	A	1	Total	C	N	O	S	0	0
			15	6	1	7	1		
3	B	1	Total	C	N	O	S	0	0
			15	6	1	7	1		
3	B	1	Total	C	N	O	S	0	1
			30	12	2	14	2		
3	B	1	Total	C	N	O	S	0	1
			15	6	1	7	1		

- Molecule 4 is BETA-D-GLUCOPYRANURONIC ACID (three-letter code: BDP) (formula: $C_6H_{10}O_7$).



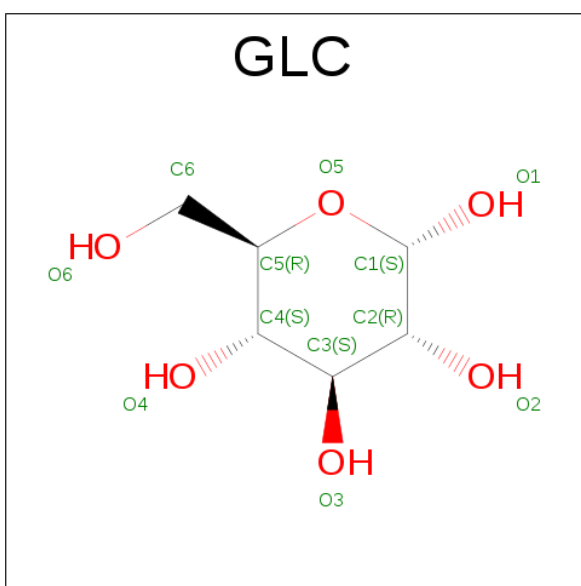
Mol	Chain	Residues	Atoms			ZeroOcc	AltConf
4	A	1	Total	C	O	0	0
			12	6	6		
4	A	1	Total	C	O	0	0
			12	6	6		
4	A	1	Total	C	O	0	0
			12	6	6		
4	B	1	Total	C	O	0	0
			12	6	6		
4	B	1	Total	C	O	0	1
			12	6	6		
4	B	1	Total	C	O	0	1
			12	6	6		

- Molecule 5 is P-NITROPHENOL (three-letter code: NPO) (formula: $C_6H_5NO_3$).



Mol	Chain	Residues	Atoms				ZeroOcc	AltConf
5	A	1	Total	C	N	O	0	0
			10	6	1	3		
5	B	1	Total	C	N	O	0	1
			10	6	1	3		

- Molecule 6 is ALPHA-D-GLUCOSE (three-letter code: GLC) (formula: $C_6H_{12}O_6$).



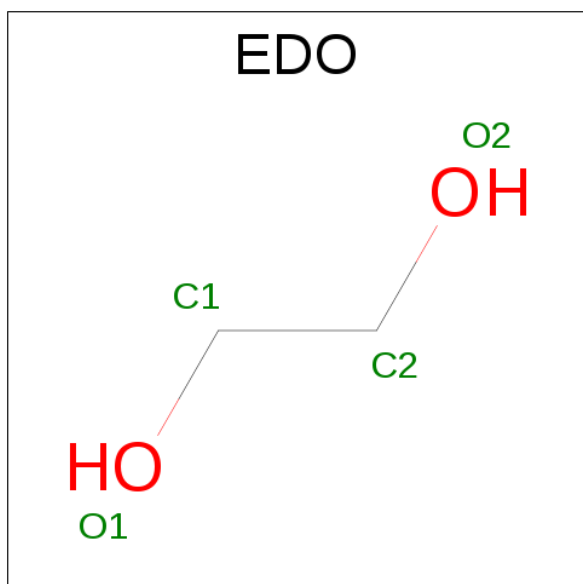
Mol	Chain	Residues	Atoms			ZeroOcc	AltConf
6	A	1	Total	C	O	0	0
			11	6	5		
6	A	1	Total	C	O	0	0
			11	6	5		

Continued on next page...

Continued from previous page...

Mol	Chain	Residues	Atoms			ZeroOcc	AltConf
6	A	1	Total	C	O	0	0
			11	6	5		
6	A	1	Total	C	O	0	0
			12	6	6		
6	B	1	Total	C	O	0	0
			11	6	5		
6	B	1	Total	C	O	0	0
			11	6	5		
6	B	1	Total	C	O	0	0
			11	6	5		
6	B	1	Total	C	O	0	0
			12	6	6		

- Molecule 7 is 1,2-ETHANEDIOL (three-letter code: EDO) (formula: C₂H₆O₂).



Mol	Chain	Residues	Atoms			ZeroOcc	AltConf
7	A	1	Total	C	O	0	0
			4	2	2		
7	A	1	Total	C	O	0	0
			4	2	2		
7	A	1	Total	C	O	0	0
			4	2	2		
7	A	1	Total	C	O	0	0
			4	2	2		
7	A	1	Total	C	O	0	0
			4	2	2		

Continued on next page...

Continued from previous page...

Mol	Chain	Residues	Atoms	ZeroOcc	AltConf
7	A	1	Total C O 4 2 2	0	0
7	A	1	Total C O 4 2 2	0	0
7	A	1	Total C O 4 2 2	0	0
7	A	1	Total C O 4 2 2	0	0
7	A	1	Total C O 4 2 2	0	0
7	A	1	Total C O 4 2 2	0	0
7	B	1	Total C O 4 2 2	0	0
7	B	1	Total C O 4 2 2	0	0
7	B	1	Total C O 4 2 2	0	0
7	B	1	Total C O 4 2 2	0	0
7	B	1	Total C O 4 2 2	0	0

- Molecule 8 is CHLORIDE ION (three-letter code: CL) (formula: Cl).

Mol	Chain	Residues	Atoms	ZeroOcc	AltConf
8	B	2	Total Cl 2 2	0	0
8	A	3	Total Cl 3 3	0	0

- Molecule 9 is SODIUM ION (three-letter code: NA) (formula: Na).

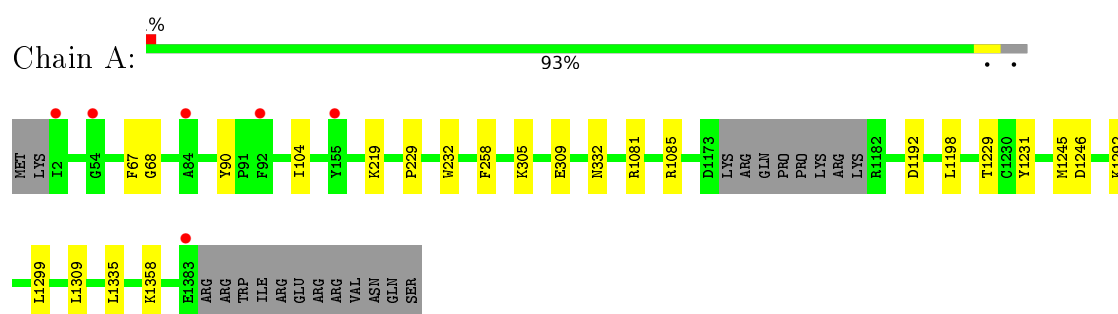
Mol	Chain	Residues	Atoms	ZeroOcc	AltConf
9	B	2	Total Na 2 2	0	1
9	A	4	Total Na 4 4	0	0

- Molecule 10 is L(+)-TARTARIC ACID (three-letter code: TLA) (formula: C₄H₆O₆).

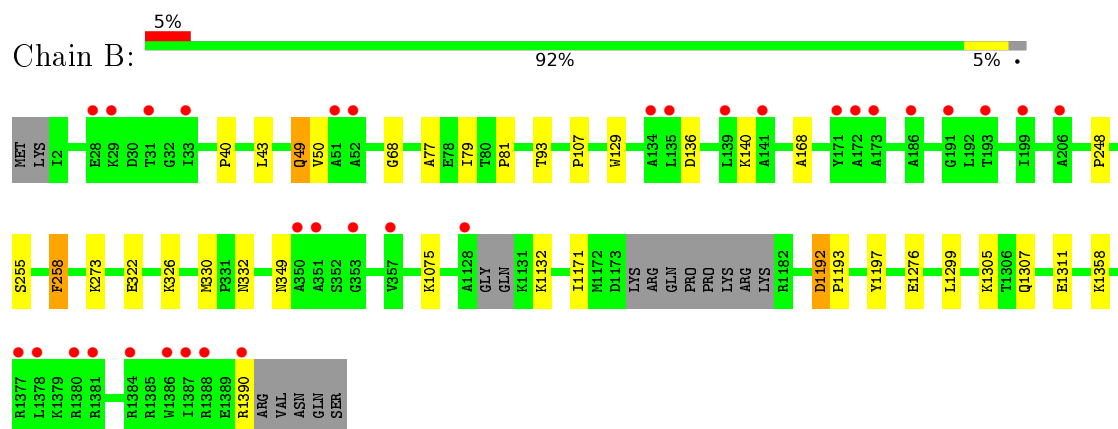
3 Residue-property plots [i](#)

These plots are drawn for all protein, RNA and DNA chains in the entry. The first graphic for a chain summarises the proportions of errors displayed in the second graphic. The second graphic shows the sequence view annotated by issues in geometry and electron density. Residues are color-coded according to the number of geometric quality criteria for which they contain at least one outlier: green = 0, yellow = 1, orange = 2 and red = 3 or more. A red dot above a residue indicates a poor fit to the electron density ($RSRZ > 2$). Stretches of 2 or more consecutive residues without any outlier are shown as a green connector. Residues present in the sample, but not in the model, are shown in grey.

- Molecule 1: maltose binding protein - heparan sulfate 6-O-sulfotransferase isoform 3 fusion protein



- Molecule 1: maltose binding protein - heparan sulfate 6-O-sulfotransferase isoform 3 fusion protein



4 Data and refinement statistics

Property	Value	Source
Space group	P 21 21 21	Depositor
Cell constants a, b, c, α , β , γ	75.78Å 128.40Å 179.72Å 90.00° 90.00° 90.00°	Depositor
Resolution (Å)	38.65 – 2.10 41.63 – 2.10	Depositor EDS
% Data completeness (in resolution range)	99.5 (38.65-2.10) 95.4 (41.63-2.10)	Depositor EDS
R_{merge}	(Not available)	Depositor
R_{sym}	(Not available)	Depositor
$\langle I/\sigma(I) \rangle$ ¹	2.67 (at 2.10Å)	Xtriage
Refinement program	PHENIX (1.10.1 _2155: ???)	Depositor
R, R_{free}	0.173 , 0.212 0.171 , 0.211	Depositor DCC
R_{free} test set	2199 reflections (2.24%)	DCC
Wilson B-factor (Å ²)	29.7	Xtriage
Anisotropy	0.276	Xtriage
Bulk solvent k_{sol} (e/Å ³), B_{sol} (Å ²)	0.35 , 53.7	EDS
L-test for twinning ²	$\langle L \rangle = 0.50$, $\langle L^2 \rangle = 0.33$	Xtriage
Estimated twinning fraction	No twinning to report.	Xtriage
F_o, F_c correlation	0.96	EDS
Total number of atoms	11901	wwPDB-VP
Average B, all atoms (Å ²)	37.0	wwPDB-VP

Xtriage's analysis on translational NCS is as follows: *The largest off-origin peak in the Patterson function is 4.33% of the height of the origin peak. No significant pseudotranslation is detected.*

¹Intensities estimated from amplitudes.

²Theoretical values of $\langle |L| \rangle$, $\langle L^2 \rangle$ for acentric reflections are 0.5, 0.333 respectively for untwinned datasets, and 0.375, 0.2 for perfectly twinned datasets.

5 Model quality

5.1 Standard geometry

Bond lengths and bond angles in the following residue types are not validated in this section: GNS, NPO, A3P, CL, NA, GLC, EDO, TLA, BDP

The Z score for a bond length (or angle) is the number of standard deviations the observed value is removed from the expected value. A bond length (or angle) with $|Z| > 5$ is considered an outlier worth inspection. RMSZ is the root-mean-square of all Z scores of the bond lengths (or angles).

Mol	Chain	Bond lengths		Bond angles	
		RMSZ	$\# Z > 5$	RMSZ	$\# Z > 5$
1	A	0.32	0/5366	0.49	0/7286
1	B	0.33	0/5409	0.49	0/7349
All	All	0.32	0/10775	0.49	0/14635

There are no bond length outliers.

There are no bond angle outliers.

There are no chirality outliers.

There are no planarity outliers.

5.2 Too-close contacts

In the following table, the Non-H and H(model) columns list the number of non-hydrogen atoms and hydrogen atoms in the chain respectively. The H(added) column lists the number of hydrogen atoms added and optimized by MolProbity. The Clashes column lists the number of clashes within the asymmetric unit, whereas Symm-Clashes lists symmetry related clashes.

Mol	Chain	Non-H	H(model)	H(added)	Clashes	Symm-Clashes
1	A	5243	0	5021	14	0
1	B	5285	0	5020	23	0
2	A	27	0	11	0	0
2	B	27	0	11	0	0
3	A	45	0	28	0	0
3	B	60	0	37	2	0
4	A	36	0	18	0	0
4	B	36	0	18	0	0
5	A	10	0	4	0	0
5	B	10	0	4	0	0
6	A	45	0	39	0	0

Continued on next page...

Continued from previous page...

Mol	Chain	Non-H	H(model)	H(added)	Clashes	Symm-Clashes
6	B	45	0	39	0	0
7	A	44	0	66	0	0
7	B	20	0	30	0	0
8	A	3	0	0	0	0
8	B	2	0	0	1	0
9	A	4	0	0	0	0
9	B	2	0	0	0	0
10	A	20	0	8	0	0
10	B	20	0	7	0	0
11	A	491	0	0	2	1
11	B	426	0	0	4	1
All	All	11901	0	10361	36	1

The all-atom clashscore is defined as the number of clashes found per 1000 atoms (including hydrogen atoms). The all-atom clashscore for this structure is 2.

All (36) close contacts within the same asymmetric unit are listed below, sorted by their clash magnitude.

Atom-1	Atom-2	Interatomic distance (Å)	Clash overlap (Å)
1:B:1132:LYS:HB2	3:B:1404[A]:GNS:O3S	2.01	0.61
1:A:219:LYS:NZ	11:A:1510:HOH:O	2.37	0.56
1:B:258:PHE:CD1	1:B:330:MET:HG2	2.41	0.56
1:B:349:ASN:OD1	11:B:1501:HOH:O	2.17	0.55
1:B:49[A]:GLN:HG2	1:B:50:VAL:HG13	1.89	0.54
1:B:68:GLY:HA3	1:B:332:ASN:O	2.08	0.53
1:B:1197:TYR:OH	11:B:1502:HOH:O	2.19	0.53
1:A:1292:LYS:NZ	11:A:1509:HOH:O	2.37	0.51
1:B:248:PRO:O	1:B:255:SER:OG	2.25	0.51
1:B:40:PRO:HG2	1:B:43:LEU:HB3	1.94	0.49
1:A:1299:LEU:HD11	1:A:1358:LYS:HA	1.94	0.49
1:A:1245:MET:HE3	1:A:1245:MET:HB2	1.69	0.48
1:B:49[A]:GLN:HG2	1:B:50:VAL:N	2.28	0.48
1:B:322:GLU:O	1:B:326:LYS:HG2	2.14	0.47
1:B:1132:LYS:HD2	3:B:1404[A]:GNS:O2S	2.14	0.47
1:A:1229:THR:HG22	1:A:1231:TYR:H	1.80	0.46
1:A:68:GLY:HA3	1:A:332:ASN:O	2.16	0.46
1:A:309:GLU:HG2	1:B:1390:ARG:HH22	1.82	0.45
1:A:1198:LEU:HD11	1:A:1335:LEU:HD22	1.97	0.45
1:A:229:PRO:HA	1:A:232:TRP:CE2	2.51	0.44
1:B:1276:GLU:OE2	11:B:1503:HOH:O	2.21	0.44
1:B:129:TRP:NE1	1:B:248:PRO:HG2	2.33	0.44

Continued on next page...

Continued from previous page...

Atom-1	Atom-2	Interatomic distance (Å)	Clash overlap (Å)
1:B:1075:LYS:NZ	11:B:1522:HOH:O	2.43	0.44
1:B:1299:LEU:HD11	1:B:1358:LYS:HA	2.00	0.44
1:B:79:ILE:HG22	1:B:81:PRO:HD3	2.01	0.43
1:A:67:PHE:HB3	1:A:104:ILE:HD13	2.00	0.42
1:B:1305:LYS:HG3	8:B:1419:CL:CL	2.57	0.42
1:A:1081:ARG:O	1:A:1085:ARG:NH1	2.47	0.42
1:B:136:ASP:OD2	1:B:140:LYS:NZ	2.45	0.42
1:B:1307:GLN:O	1:B:1311:GLU:HG3	2.20	0.42
1:B:93:THR:HB	1:B:107:PRO:HB2	2.00	0.41
1:A:90:TYR:CE1	1:A:305:LYS:HG2	2.55	0.41
1:B:1192:ASP:HA	1:B:1193:PRO:HD3	1.91	0.41
1:A:1309:LEU:HA	1:A:1309:LEU:HD23	1.93	0.41
1:A:1335:LEU:HA	1:A:1335:LEU:HD12	1.93	0.40
1:B:77:ALA:HB2	1:B:273:LYS:HE3	2.03	0.40

All (1) symmetry-related close contacts are listed below. The label for Atom-2 includes the symmetry operator and encoded unit-cell translations to be applied.

Atom-1	Atom-2	Interatomic distance (Å)	Clash overlap (Å)
11:A:1823:HOH:O	11:B:1876:HOH:O[2_454]	2.17	0.03

5.3 Torsion angles [i](#)

5.3.1 Protein backbone [i](#)

In the following table, the Percentiles column shows the percent Ramachandran outliers of the chain as a percentile score with respect to all X-ray entries followed by that with respect to entries of similar resolution.

The Analysed column shows the number of residues for which the backbone conformation was analysed, and the total number of residues.

Mol	Chain	Analysed	Favoured	Allowed	Outliers	Percentiles	
1	A	668/692 (96%)	653 (98%)	15 (2%)	0	100	100
1	B	675/692 (98%)	660 (98%)	14 (2%)	1 (0%)	56	58
All	All	1343/1384 (97%)	1313 (98%)	29 (2%)	1 (0%)	56	58

All (1) Ramachandran outliers are listed below:

Mol	Chain	Res	Type
1	B	168	ALA

5.3.2 Protein sidechains [i](#)

In the following table, the Percentiles column shows the percent sidechain outliers of the chain as a percentile score with respect to all X-ray entries followed by that with respect to entries of similar resolution.

The Analysed column shows the number of residues for which the sidechain conformation was analysed, and the total number of residues.

Mol	Chain	Analysed	Rotameric	Outliers	Percentiles	
1	A	535/582 (92%)	532 (99%)	3 (1%)	90	94
1	B	532/582 (91%)	527 (99%)	5 (1%)	84	89
All	All	1067/1164 (92%)	1059 (99%)	8 (1%)	88	92

All (8) residues with a non-rotameric sidechain are listed below:

Mol	Chain	Res	Type
1	A	258	PHE
1	A	1192	ASP
1	A	1246	ASP
1	B	49[A]	GLN
1	B	49[B]	GLN
1	B	258	PHE
1	B	1171	ILE
1	B	1192	ASP

Some sidechains can be flipped to improve hydrogen bonding and reduce clashes. There are no such sidechains identified.

5.3.3 RNA [i](#)

There are no RNA molecules in this entry.

5.4 Non-standard residues in protein, DNA, RNA chains [i](#)

There are no non-standard protein/DNA/RNA residues in this entry.

5.5 Carbohydrates ⓘ

There are no carbohydrates in this entry.

5.6 Ligand geometry ⓘ

Of 56 ligands modelled in this entry, 11 are monoatomic - leaving 45 for Mogul analysis.

In the following table, the Counts columns list the number of bonds (or angles) for which Mogul statistics could be retrieved, the number of bonds (or angles) that are observed in the model and the number of bonds (or angles) that are defined in the chemical component dictionary. The Link column lists molecule types, if any, to which the group is linked. The Z score for a bond length (or angle) is the number of standard deviations the observed value is removed from the expected value. A bond length (or angle) with $|Z| > 2$ is considered an outlier worth inspection. RMSZ is the root-mean-square of all Z scores of the bond lengths (or angles).

Mol	Type	Chain	Res	Link	Bond lengths			Bond angles		
					Counts	RMSZ	# Z > 2	Counts	RMSZ	# Z > 2
2	A3P	A	1401	-	25,29,29	0.67	0	30,45,45	0.56	0
3	GNS	A	1402	4	14,15,16	0.60	0	19,22,24	1.41	2 (10%)
4	BDP	A	1403	9,3	9,12,13	0.91	0	12,17,19	1.02	1 (8%)
3	GNS	A	1404	4	14,15,16	0.51	0	19,22,24	1.23	2 (10%)
4	BDP	A	1405	3	9,12,13	0.91	0	12,17,19	0.68	0
3	GNS	A	1406	4	14,15,16	0.66	0	19,22,24	1.06	1 (5%)
4	BDP	A	1407	3,5	9,12,13	0.99	1 (11%)	12,17,19	1.44	2 (16%)
5	NPO	A	1408	4	8,10,10	0.72	0	11,13,13	1.07	1 (9%)
6	GLC	A	1409	6	11,11,12	0.50	0	15,15,17	1.03	1 (6%)
6	GLC	A	1410	6	11,11,12	0.62	0	15,15,17	1.24	1 (6%)
6	GLC	A	1411	6	11,11,12	0.67	0	15,15,17	1.08	1 (6%)
6	GLC	A	1412	6	12,12,12	0.53	0	17,17,17	0.58	0
7	EDO	A	1413	-	3,3,3	0.38	0	2,2,2	0.87	0
7	EDO	A	1414	-	3,3,3	0.46	0	2,2,2	0.41	0
7	EDO	A	1415	-	3,3,3	0.41	0	2,2,2	0.48	0
7	EDO	A	1416	-	3,3,3	0.51	0	2,2,2	0.46	0
7	EDO	A	1417	-	3,3,3	0.44	0	2,2,2	0.55	0
7	EDO	A	1418	-	3,3,3	0.45	0	2,2,2	0.35	0
7	EDO	A	1419	-	3,3,3	0.48	0	2,2,2	0.44	0
7	EDO	A	1420	-	3,3,3	0.54	0	2,2,2	0.08	0
7	EDO	A	1421	-	3,3,3	0.45	0	2,2,2	0.62	0
7	EDO	A	1422	-	3,3,3	0.47	0	2,2,2	0.51	0
7	EDO	A	1423	-	3,3,3	0.54	0	2,2,2	0.24	0
10	TLA	A	1431	9	3,9,9	0.29	0	6,12,12	1.39	1 (16%)
10	TLA	A	1432	-	3,9,9	0.42	0	6,12,12	1.32	1 (16%)

Mol	Type	Chain	Res	Link	Bond lengths			Bond angles		
					Counts	RMSZ	# Z > 2	Counts	RMSZ	# Z > 2
2	A3P	B	1401	-	25,29,29	0.68	0	30,45,45	0.60	0
3	GNS	B	1402	4	14,15,16	0.59	0	19,22,24	1.46	3 (15%)
4	BDP	B	1403	3	9,12,13	0.95	0	12,17,19	1.29	3 (25%)
3	GNS	B	1404[A]	4	14,15,16	0.54	0	19,22,24	1.72	5 (26%)
3	GNS	B	1404[B]	4	14,15,16	0.59	0	19,22,24	1.15	1 (5%)
4	BDP	B	1405[A]	3	9,12,13	0.92	0	12,17,19	1.03	1 (8%)
3	GNS	B	1406[A]	4	14,15,16	0.42	0	19,22,24	1.73	5 (26%)
4	BDP	B	1407[A]	3,5	9,12,13	0.95	1 (11%)	12,17,19	1.30	1 (8%)
5	NPO	B	1408[A]	4	8,10,10	0.77	0	11,13,13	1.60	2 (18%)
6	GLC	B	1409	6	11,11,12	0.49	0	15,15,17	1.37	2 (13%)
6	GLC	B	1410	6	11,11,12	0.58	0	15,15,17	0.89	0
6	GLC	B	1411	6	11,11,12	0.57	0	15,15,17	0.98	1 (6%)
6	GLC	B	1412	6	12,12,12	0.47	0	17,17,17	0.47	0
7	EDO	B	1413	-	3,3,3	0.58	0	2,2,2	0.38	0
7	EDO	B	1414	-	3,3,3	0.45	0	2,2,2	0.66	0
7	EDO	B	1415	-	3,3,3	0.42	0	2,2,2	0.59	0
7	EDO	B	1416	-	3,3,3	0.50	0	2,2,2	0.51	0
7	EDO	B	1417	-	3,3,3	0.53	0	2,2,2	0.54	0
10	TLA	B	1422	9	3,9,9	0.37	0	6,12,12	1.24	1 (16%)
10	TLA	B	1423	-	3,9,9	0.26	0	6,12,12	1.34	1 (16%)

In the following table, the Chirals column lists the number of chiral outliers, the number of chiral centers analysed, the number of these observed in the model and the number defined in the chemical component dictionary. Similar counts are reported in the Torsion and Rings columns. '-' means no outliers of that kind were identified.

Mol	Type	Chain	Res	Link	Chirals	Torsions	Rings
2	A3P	A	1401	-	-	0/11/31/31	0/3/3/3
3	GNS	A	1402	4	-	0/7/24/27	0/1/1/1
4	BDP	A	1403	9,3	-	0/0/21/24	0/1/1/1
3	GNS	A	1404	4	-	0/7/24/27	0/1/1/1
4	BDP	A	1405	3	-	0/0/21/24	0/1/1/1
3	GNS	A	1406	4	-	0/7/24/27	0/1/1/1
4	BDP	A	1407	3,5	-	0/0/21/24	0/1/1/1
5	NPO	A	1408	4	-	0/4/4/4	0/1/1/1
6	GLC	A	1409	6	-	0/2/19/22	0/1/1/1
6	GLC	A	1410	6	-	0/2/19/22	0/1/1/1
6	GLC	A	1411	6	-	0/2/19/22	0/1/1/1
6	GLC	A	1412	6	-	0/2/22/22	0/1/1/1
7	EDO	A	1413	-	-	0/1/1/1	0/0/0/0

Continued on next page...

Continued from previous page...

Mol	Type	Chain	Res	Link	Chirals	Torsions	Rings
7	EDO	A	1414	-	-	0/1/1/1	0/0/0/0
7	EDO	A	1415	-	-	0/1/1/1	0/0/0/0
7	EDO	A	1416	-	-	0/1/1/1	0/0/0/0
7	EDO	A	1417	-	-	0/1/1/1	0/0/0/0
7	EDO	A	1418	-	-	0/1/1/1	0/0/0/0
7	EDO	A	1419	-	-	0/1/1/1	0/0/0/0
7	EDO	A	1420	-	-	0/1/1/1	0/0/0/0
7	EDO	A	1421	-	-	0/1/1/1	0/0/0/0
7	EDO	A	1422	-	-	0/1/1/1	0/0/0/0
7	EDO	A	1423	-	-	0/1/1/1	0/0/0/0
10	TLA	A	1431	9	-	0/4/12/12	0/0/0/0
10	TLA	A	1432	-	-	0/4/12/12	0/0/0/0
2	A3P	B	1401	-	-	0/11/31/31	0/3/3/3
3	GNS	B	1402	4	-	0/7/24/27	0/1/1/1
4	BDP	B	1403	3	-	0/0/21/24	0/1/1/1
3	GNS	B	1404[A]	4	-	0/7/24/27	0/1/1/1
3	GNS	B	1404[B]	4	-	0/7/24/27	0/1/1/1
4	BDP	B	1405[A]	3	-	0/0/21/24	0/1/1/1
3	GNS	B	1406[A]	4	-	0/7/24/27	0/1/1/1
4	BDP	B	1407[A]	3,5	-	0/0/21/24	0/1/1/1
5	NPO	B	1408[A]	4	-	0/4/4/4	0/1/1/1
6	GLC	B	1409	6	-	0/2/19/22	0/1/1/1
6	GLC	B	1410	6	-	0/2/19/22	0/1/1/1
6	GLC	B	1411	6	-	0/2/19/22	0/1/1/1
6	GLC	B	1412	6	-	0/2/22/22	0/1/1/1
7	EDO	B	1413	-	-	0/1/1/1	0/0/0/0
7	EDO	B	1414	-	-	0/1/1/1	0/0/0/0
7	EDO	B	1415	-	-	0/1/1/1	0/0/0/0
7	EDO	B	1416	-	-	0/1/1/1	0/0/0/0
7	EDO	B	1417	-	-	0/1/1/1	0/0/0/0
10	TLA	B	1422	9	-	0/4/12/12	0/0/0/0
10	TLA	B	1423	-	-	0/4/12/12	0/0/0/0

All (2) bond length outliers are listed below:

Mol	Chain	Res	Type	Atoms	Z	Observed(Å)	Ideal(Å)
4	A	1407	BDP	O5-C5	-2.16	1.41	1.43
4	B	1407[A]	BDP	O5-C5	-2.06	1.41	1.43

All (40) bond angle outliers are listed below:

Mol	Chain	Res	Type	Atoms	Z	Observed(°)	Ideal(°)
3	B	1404[A]	GNS	C3-C2-N	-4.48	104.36	110.36
3	A	1402	GNS	O3S-S1-O2S	-4.24	108.67	120.14
3	B	1404[B]	GNS	O3S-S1-O2S	-4.13	108.97	120.14
3	B	1402	GNS	O3S-S1-O2S	-4.08	109.11	120.14
3	B	1406[A]	GNS	O3S-S1-O2S	-3.97	109.39	120.14
3	A	1406	GNS	O3S-S1-O2S	-3.96	109.42	120.14
6	A	1410	GLC	O5-C1-C2	-3.94	104.59	110.89
5	B	1408[A]	NPO	C6-C1-N1	-3.52	116.98	119.51
3	A	1404	GNS	O3S-S1-O2S	-3.50	110.67	120.14
3	B	1404[A]	GNS	O3S-S1-O2S	-3.22	111.41	120.14
10	A	1431	TLA	C1-C2-C3	-3.15	106.89	113.35
10	B	1423	TLA	C4-C3-C2	-2.96	107.28	113.35
10	A	1432	TLA	C1-C2-C3	-2.71	107.78	113.35
3	B	1404[A]	GNS	C3-C4-C5	-2.47	105.83	110.23
10	B	1422	TLA	C4-C3-C2	-2.30	108.64	113.35
4	B	1403	BDP	O5-C1-C2	-2.29	107.23	110.89
3	B	1404[A]	GNS	O4-C4-C3	-2.28	105.22	110.36
3	B	1406[A]	GNS	O4-C4-C3	-2.11	105.59	110.36
6	A	1411	GLC	C1-C2-C3	-2.09	107.02	109.55
3	B	1406[A]	GNS	C3-C2-N	-2.05	107.61	110.36
4	A	1407	BDP	O4-C4-C3	-2.04	105.76	110.36
5	A	1408	NPO	C2-C1-N1	2.06	120.99	119.51
3	A	1402	GNS	C1-O5-C5	2.11	115.24	112.14
4	B	1403	BDP	O5-C5-C4	2.12	111.96	108.51
6	B	1411	GLC	O5-C5-C6	2.12	111.89	107.34
3	A	1404	GNS	C1-O5-C5	2.13	115.28	112.14
3	B	1404[A]	GNS	O5-C5-C6	2.17	111.99	107.34
3	B	1402	GNS	O2S-S1-N	2.18	111.66	108.63
4	B	1405[A]	BDP	C1-C2-C3	2.22	112.24	109.55
4	A	1403	BDP	O5-C5-C4	2.25	112.18	108.51
4	B	1403	BDP	C1-C2-C3	2.43	112.49	109.55
6	B	1409	GLC	C1-C2-C3	2.47	112.55	109.55
3	B	1406[A]	GNS	O5-C5-C4	2.53	114.32	110.13
6	A	1409	GLC	C1-O5-C5	2.81	116.27	112.14
5	B	1408[A]	NPO	C2-C1-N1	2.88	121.58	119.51
3	B	1402	GNS	C1-O5-C5	2.89	116.39	112.14
4	A	1407	BDP	C1-C2-C3	3.30	113.55	109.55
4	B	1407[A]	BDP	C1-C2-C3	3.54	113.84	109.55
6	B	1409	GLC	C1-O5-C5	3.72	117.60	112.14
3	B	1406[A]	GNS	C1-O5-C5	4.43	118.66	112.14

There are no chirality outliers.

There are no torsion outliers.

There are no ring outliers.

1 monomer is involved in 2 short contacts:

Mol	Chain	Res	Type	Clashes	Symm-Clashes
3	B	1404[A]	GNS	2	0

5.7 Other polymers [i](#)

There are no such residues in this entry.

5.8 Polymer linkage issues [i](#)

There are no chain breaks in this entry.

6 Fit of model and data ⓘ

6.1 Protein, DNA and RNA chains ⓘ

In the following table, the column labelled ‘#RSRZ> 2’ contains the number (and percentage) of RSRZ outliers, followed by percent RSRZ outliers for the chain as percentile scores relative to all X-ray entries and entries of similar resolution. The OWAB column contains the minimum, median, 95th percentile and maximum values of the occupancy-weighted average B-factor per residue. The column labelled ‘Q< 0.9’ lists the number of (and percentage) of residues with an average occupancy less than 0.9.

Mol	Chain	Analysed	<RSRZ>	#RSRZ>2	OWAB(Å ²)	Q<0.9
1	A	670/692 (96%)	-0.33	6 (0%) 85 88	17, 31, 57, 98	0
1	B	675/692 (97%)	0.09	32 (4%) 35 44	16, 38, 71, 108	1 (0%)
All	All	1345/1384 (97%)	-0.12	38 (2%) 56 64	16, 33, 65, 108	1 (0%)

All (38) RSRZ outliers are listed below:

Mol	Chain	Res	Type	RSRZ
1	B	1386	TRP	6.7
1	B	1387	ILE	5.8
1	B	172	ALA	4.5
1	B	173	ALA	4.4
1	B	1378	LEU	4.1
1	B	1388	ARG	4.1
1	A	54	GLY	3.9
1	B	51	ALA	3.6
1	B	52	ALA	3.4
1	B	31	THR	3.2
1	B	351	ALA	3.2
1	B	33	ILE	3.2
1	B	135	LEU	3.1
1	B	134	ALA	3.0
1	B	1128	ALA	3.0
1	B	171	TYR	2.8
1	B	186	ALA	2.7
1	B	1380	ARG	2.7
1	B	1377	ARG	2.7
1	B	191	GLY	2.7
1	B	206	ALA	2.6
1	B	193	THR	2.5
1	A	1383	GLU	2.5
1	A	2	ILE	2.4

Continued on next page...

Continued from previous page...

Mol	Chain	Res	Type	RSRZ
1	B	1390	ARG	2.4
1	A	84	ALA	2.4
1	A	92	PHE	2.3
1	B	350	ALA	2.3
1	B	139	LEU	2.2
1	B	353	GLY	2.2
1	B	141	ALA	2.2
1	B	1384	ARG	2.2
1	B	199	ILE	2.2
1	B	1381	ARG	2.2
1	B	29	LYS	2.1
1	B	28	GLU	2.0
1	A	155	TYR	2.0
1	B	357	VAL	2.0

6.2 Non-standard residues in protein, DNA, RNA chains [i](#)

There are no non-standard protein/DNA/RNA residues in this entry.

6.3 Carbohydrates [i](#)

There are no carbohydrates in this entry.

6.4 Ligands [i](#)

In the following table, the Atoms column lists the number of modelled atoms in the group and the number defined in the chemical component dictionary. LLDF column lists the quality of electron density of the group with respect to its neighbouring residues in protein, DNA or RNA chains. The B-factors column lists the minimum, median, 95th percentile and maximum values of B factors of atoms in the group. The column labelled 'Q< 0.9' lists the number of atoms with occupancy less than 0.9.

Mol	Type	Chain	Res	Atoms	RSCC	RSR	LLDF	B-factors(Å ²)	Q<0.9
6	GLC	B	1409	11/12	0.77	0.26	8.87	59,63,66,69	0
5	NPO	A	1408	10/10	0.95	0.13	6.69	40,42,53,60	0
7	EDO	A	1421	4/4	0.76	0.21	3.23	33,38,43,57	0
10	TLA	A	1432	10/10	0.83	0.35	2.92	52,57,62,70	0
9	NA	B	1420	1/1	0.95	0.15	2.65	43,43,43,43	0
10	TLA	B	1423	10/10	0.86	0.19	2.62	33,47,54,56	0
7	EDO	B	1416	4/4	0.77	0.21	2.51	44,45,46,48	0

Continued on next page...

Continued from previous page...

Mol	Type	Chain	Res	Atoms	RSCC	RSR	LLDF	B-factors(Å ²)	Q<0.9
7	EDO	A	1422	4/4	0.87	0.13	2.50	47,49,57,64	0
5	NPO	B	1408[A]	10/10	0.86	0.19	1.95	60,62,68,72	10
6	GLC	A	1412	12/12	0.98	0.21	1.68	22,26,30,30	0
3	GNS	B	1404[A]	15/16	0.85	0.18	1.59	27,34,44,49	15
7	EDO	A	1419	4/4	0.94	0.13	1.54	33,36,36,37	0
7	EDO	B	1417	4/4	0.87	0.16	1.18	37,41,49,56	0
6	GLC	A	1411	11/12	0.98	0.18	1.16	18,22,24,25	0
7	EDO	A	1418	4/4	0.90	0.14	1.14	36,38,43,46	0
7	EDO	A	1417	4/4	0.98	0.13	1.05	25,26,26,32	0
7	EDO	A	1416	4/4	0.92	0.11	0.70	25,28,29,38	0
6	GLC	A	1409	11/12	0.85	0.14	0.63	34,43,51,53	11
9	NA	A	1427	1/1	0.70	0.13	0.46	54,54,54,54	0
3	GNS	B	1402	15/16	0.99	0.10	0.45	16,20,28,33	0
7	EDO	B	1415	4/4	0.98	0.12	0.41	26,26,31,31	0
7	EDO	B	1413	4/4	0.87	0.14	0.41	22,29,30,30	0
7	EDO	A	1414	4/4	0.94	0.09	0.15	37,38,39,39	0
2	A3P	B	1401	27/27	0.98	0.12	-0.02	15,19,22,25	0
8	CL	B	1419	1/1	1.00	0.10	-0.03	35,35,35,35	0
7	EDO	B	1414	4/4	0.92	0.14	-0.05	38,43,49,50	0
7	EDO	A	1423	4/4	0.91	0.10	-0.14	31,33,42,46	0
2	A3P	A	1401	27/27	0.99	0.09	-0.37	16,20,23,25	0
3	GNS	A	1402	15/16	0.98	0.08	-0.55	18,23,28,28	0
6	GLC	B	1412	12/12	0.92	0.12	-0.70	25,32,36,38	0
7	EDO	A	1415	4/4	0.97	0.07	-0.78	21,33,36,47	0
6	GLC	B	1411	11/12	0.88	0.10	-1.25	35,36,41,44	0
6	GLC	A	1410	11/12	0.97	0.12	-1.41	23,29,35,35	0
6	GLC	B	1410	11/12	0.91	0.09	-1.51	35,38,45,47	0
8	CL	B	1418	1/1	0.99	0.08	-2.39	47,47,47,47	0
8	CL	A	1424	1/1	1.00	0.04	-3.14	28,28,28,28	0
9	NA	A	1429	1/1	0.92	0.09	-	40,40,40,40	0
4	BDP	A	1405	12/13	0.91	0.14	-	38,44,53,59	0
3	GNS	B	1406[A]	15/16	0.82	0.12	-	55,59,66,69	15
8	CL	A	1425	1/1	0.98	0.07	-	45,45,45,45	0
4	BDP	B	1403	12/13	0.97	0.10	-	18,23,25,26	0
4	BDP	B	1407[A]	12/13	0.81	0.17	-	52,61,67,68	12
10	TLA	A	1431	10/10	0.91	0.21	-	33,40,44,50	0
3	GNS	A	1404	15/16	0.96	0.10	-	29,37,44,47	0
10	TLA	B	1422	10/10	0.95	0.11	-	38,43,49,51	0
3	GNS	B	1404[B]	15/16	0.85	0.18	-	25,30,34,36	15
4	BDP	A	1407	12/13	0.92	0.15	-	45,50,55,56	0
4	BDP	B	1405[A]	12/13	0.90	0.10	-	34,42,53,53	12
8	CL	A	1426	1/1	0.98	0.10	-	52,52,52,52	0

Continued on next page...

Continued from previous page...

Mol	Type	Chain	Res	Atoms	RSCC	RSR	LLDF	B-factors(\AA^2)	Q<0.9
9	NA	A	1430	1/1	0.80	0.09	-	69,69,69,69	0
7	EDO	A	1413	4/4	0.92	0.25	-	45,49,55,55	0
4	BDP	A	1403	12/13	0.97	0.08	-	21,25,30,32	0
9	NA	A	1428	1/1	0.91	0.18	-	38,38,38,38	1
7	EDO	A	1420	4/4	0.81	0.26	-	30,32,39,41	0
9	NA	B	1421[A]	1/1	0.85	0.17	-	56,56,56,56	1
3	GNS	A	1406	15/16	0.93	0.16	-	45,55,74,83	0

6.5 Other polymers [i](#)

There are no such residues in this entry.