



# Full wwPDB X-ray Structure Validation Report ⓘ

Feb 1, 2016 – 01:08 PM GMT

PDB ID : 3T2E  
Title : Fructose-1,6-bisphosphate aldolase/phosphatase from *Thermoproteus neutrophilus*, F6P-bound form  
Authors : Du, J.; Say, R.; Lue, W.; Fuchs, G.; Einsle, O.  
Deposited on : 2011-07-22  
Resolution : 1.66 Å(reported)

This is a Full wwPDB X-ray Structure Validation Report for a publicly released PDB entry.  
We welcome your comments at [validation@mail.wwpdb.org](mailto:validation@mail.wwpdb.org)  
A user guide is available at  
<http://wwpdb.org/validation/2016/XrayValidationReportHelp>  
with specific help available everywhere you see the ⓘ symbol.

---

The following versions of software and data (see [references ⓘ](#)) were used in the production of this report:

MolProbity : 4.02b-467  
Mogul : 1.7 (RC4), CSD as536be (2015)  
Xtriage (Phenix) : 1.9-1692  
EDS : rb-20026688  
Percentile statistics : 20151230.v01 (using entries in the PDB archive December 30th 2015)  
Refmac : 5.8.0135  
CCP4 : 6.5.0  
Ideal geometry (proteins) : Engh & Huber (2001)  
Ideal geometry (DNA, RNA) : Parkinson et al. (1996)  
Validation Pipeline (wwPDB-VP) : trunk26865

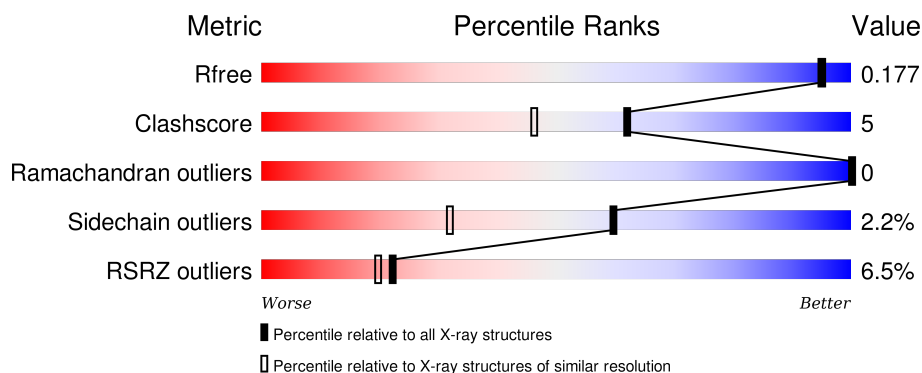
# 1 Overall quality at a glance

The following experimental techniques were used to determine the structure:

## *X-RAY DIFFRACTION*


The reported resolution of this entry is 1.66 Å.

Percentile scores (ranging between 0-100) for global validation metrics of the entry are shown in the following graphic. The table shows the number of entries on which the scores are based.



Metric	Whole archive (#Entries)	Similar resolution (#Entries, resolution range(Å))
$R_{free}$	91344	1226 (1.66-1.66)
Clashscore	102246	1323 (1.66-1.66)
Ramachandran outliers	100387	1295 (1.66-1.66)
Sidechain outliers	100360	1295 (1.66-1.66)
RSRZ outliers	91569	1227 (1.66-1.66)

The table below summarises the geometric issues observed across the polymeric chains and their fit to the electron density. The red, orange, yellow and green segments on the lower bar indicate the fraction of residues that contain outliers for  $\geq 3$ , 2, 1 and 0 types of geometric quality criteria. A grey segment represents the fraction of residues that are not modelled. The numeric value for each fraction is indicated below the corresponding segment, with a dot representing fractions  $\leq 5\%$ . The upper red bar (where present) indicates the fraction of residues that have poor fit to the electron density. The numeric value is given above the bar.

Mol	Chain	Length	Quality of chain
1	A	407	

The following table lists non-polymeric compounds, carbohydrate monomers and non-standard residues in protein, DNA, RNA chains that are outliers for geometric or electron-density-fit criteria:

Mol	Type	Chain	Res	Chirality	Geometry	Clashes	Electron density
2	MG	A	408	-	-	-	X

*Continued on next page...*

*Continued from previous page...*

Mol	Type	Chain	Res	Chirality	Geometry	Clashes	Electron density
2	MG	A	409	-	-	-	X

## 2 Entry composition

There are 4 unique types of molecules in this entry. The entry contains 3351 atoms, of which 0 are hydrogens and 0 are deuteriums.

In the tables below, the ZeroOcc column contains the number of atoms modelled with zero occupancy, the AltConf column contains the number of residues with at least one atom in alternate conformation and the Trace column contains the number of residues modelled with at most 2 atoms.

- Molecule 1 is a protein called Fructose-1,6-bisphosphate aldolase/phosphatase.

Mol	Chain	Residues	Atoms					ZeroOcc	AltConf	Trace
1	A	385	Total	C	N	O	S	0	5	0
			3057	1974	523	547	13			

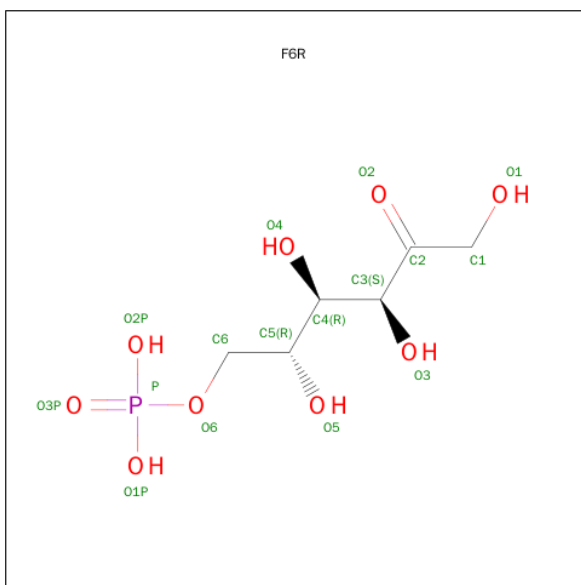
There are 8 discrepancies between the modelled and reference sequences:

Chain	Residue	Modelled	Actual	Comment	Reference
A	400	LEU	-	EXPRESSION TAG	UNP B1YAL1
A	401	GLU	-	EXPRESSION TAG	UNP B1YAL1
A	402	HIS	-	EXPRESSION TAG	UNP B1YAL1
A	403	HIS	-	EXPRESSION TAG	UNP B1YAL1
A	404	HIS	-	EXPRESSION TAG	UNP B1YAL1
A	405	HIS	-	EXPRESSION TAG	UNP B1YAL1
A	406	HIS	-	EXPRESSION TAG	UNP B1YAL1
A	407	HIS	-	EXPRESSION TAG	UNP B1YAL1

- Molecule 2 is MAGNESIUM ION (three-letter code: MG) (formula: Mg).

Mol	Chain	Residues	Atoms		ZeroOcc	AltConf
2	A	2	Total	Mg	0	0
			2	2		

- Molecule 3 is FRUCTOSE -6-PHOSPHATE (three-letter code: F6R) (formula: C<sub>6</sub>H<sub>13</sub>O<sub>9</sub>P).



Mol	Chain	Residues	Atoms				ZeroOcc	AltConf
3	A	1	Total	C	O	P	0	0
			16	6	9	1		

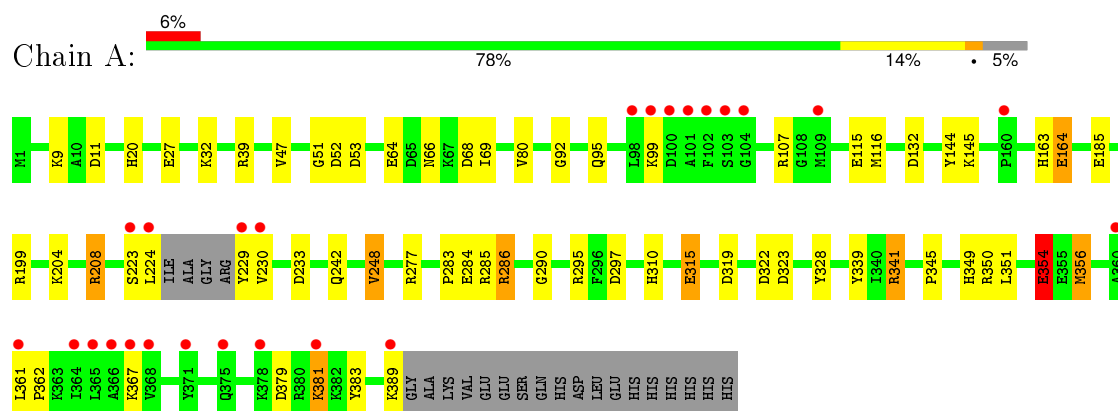
- Molecule 4 is water.

Mol	Chain	Residues	Atoms		ZeroOcc	AltConf
4	A	276	Total	O	0	0
			276	276		

### 3 Residue-property plots [i](#)

These plots are drawn for all protein, RNA and DNA chains in the entry. The first graphic for a chain summarises the proportions of errors displayed in the second graphic. The second graphic shows the sequence view annotated by issues in geometry and electron density. Residues are color-coded according to the number of geometric quality criteria for which they contain at least one outlier: green = 0, yellow = 1, orange = 2 and red = 3 or more. A red dot above a residue indicates a poor fit to the electron density ( $RSRZ > 2$ ). Stretches of 2 or more consecutive residues without any outlier are shown as a green connector. Residues present in the sample, but not in the model, are shown in grey.

- Molecule 1: Fructose-1,6-bisphosphate aldolase/phosphatase



## 4 Data and refinement statistics

Property	Value	Source
Space group	I 4 2 2	Depositor
Cell constants a, b, c, $\alpha$ , $\beta$ , $\gamma$	112.31Å 112.31Å 151.22Å 90.00° 90.00° 90.00°	Depositor
Resolution (Å)	39.71 – 1.66 39.71 – 1.66	Depositor EDS
% Data completeness (in resolution range)	99.8 (39.71-1.66) 99.8 (39.71-1.66)	Depositor EDS
$R_{merge}$	0.09	Depositor
$R_{sym}$	0.09	Depositor
$\langle I/\sigma(I) \rangle$ <sup>1</sup>	4.29 (at 1.66Å)	Xtriage
Refinement program	REFMAC 5.5.0109	Depositor
R, $R_{free}$	0.150 , 0.178 0.148 , 0.177	Depositor DCC
$R_{free}$ test set	2892 reflections (5.34%)	DCC
Wilson B-factor (Å <sup>2</sup> )	11.6	Xtriage
Anisotropy	0.002	Xtriage
Bulk solvent $k_{sol}$ (e/Å <sup>3</sup> ), $B_{sol}$ (Å <sup>2</sup> )	0.35 , 49.5	EDS
Estimated twinning fraction	0.016 for -1/2*h+1/2*k-1/2*l, 1/2*h-1/2*k-1/2*l, -h-k 0.020 for -1/2*h-1/2*k+1/2*l, -1/2*h-1/2*k-1/2*l, h-k	Xtriage
L-test for twinning <sup>2</sup>	$\langle  L  \rangle = 0.48$ , $\langle L^2 \rangle = 0.32$	Xtriage
Outliers	0 of 57043 reflections	Xtriage
$F_o, F_c$ correlation	0.97	EDS
Total number of atoms	3351	wwPDB-VP
Average B, all atoms (Å <sup>2</sup> )	16.0	wwPDB-VP

Xtriage's analysis on translational NCS is as follows: *The largest off-origin peak in the Patterson function is 4.81% of the height of the origin peak. No significant pseudotranslation is detected.*

<sup>1</sup>Intensities estimated from amplitudes.

<sup>2</sup>Theoretical values of  $\langle |L| \rangle$ ,  $\langle L^2 \rangle$  for acentric reflections are 0.5, 0.375 respectively for untwinned datasets, and 0.333, 0.2 for perfectly twinned datasets.

## 5 Model quality [i](#)

### 5.1 Standard geometry [i](#)

Bond lengths and bond angles in the following residue types are not validated in this section: MG, F6R

The Z score for a bond length (or angle) is the number of standard deviations the observed value is removed from the expected value. A bond length (or angle) with  $|Z| > 5$  is considered an outlier worth inspection. RMSZ is the root-mean-square of all Z scores of the bond lengths (or angles).

Mol	Chain	Bond lengths		Bond angles	
		RMSZ	$\# Z  > 5$	RMSZ	$\# Z  > 5$
1	A	1.47	15/3151 (0.5%)	1.36	29/4263 (0.7%)

All (15) bond length outliers are listed below:

Mol	Chain	Res	Type	Atoms	Z	Observed(Å)	Ideal(Å)
1	A	145	LYS	CE-NZ	7.03	1.66	1.49
1	A	164	GLU	CB-CG	6.18	1.63	1.52
1	A	356[A]	MET	CG-SD	-5.80	1.66	1.81
1	A	356[B]	MET	CG-SD	-5.80	1.66	1.81
1	A	115	GLU	CB-CG	-5.71	1.41	1.52
1	A	315	GLU	CB-CG	-5.62	1.41	1.52
1	A	204	LYS	CE-NZ	5.57	1.62	1.49
1	A	354	GLU	CG-CD	5.50	1.60	1.51
1	A	47	VAL	CB-CG2	5.38	1.64	1.52
1	A	185	GLU	CB-CG	-5.30	1.42	1.52
1	A	295	ARG	CG-CD	5.29	1.65	1.51
1	A	80	VAL	CB-CG1	5.28	1.64	1.52
1	A	354	GLU	CD-OE2	-5.13	1.20	1.25
1	A	328	TYR	CE1-CZ	-5.12	1.31	1.38
1	A	248	VAL	CB-CG2	5.08	1.63	1.52

All (29) bond angle outliers are listed below:

Mol	Chain	Res	Type	Atoms	Z	Observed(°)	Ideal(°)
1	A	286	ARG	NE-CZ-NH2	19.97	130.29	120.30
1	A	286	ARG	NE-CZ-NH1	-13.46	113.57	120.30
1	A	11	ASP	CB-CG-OD2	-10.13	109.18	118.30
1	A	295	ARG	NE-CZ-NH1	8.77	124.68	120.30
1	A	323	ASP	CB-CG-OD1	7.72	125.25	118.30
1	A	11	ASP	CB-CG-OD1	7.51	125.06	118.30

*Continued on next page...*



*Continued from previous page...*

Mol	Chain	Res	Type	Atoms	Z	Observed(°)	Ideal(°)
1	A	341	ARG	NE-CZ-NH1	-7.18	116.71	120.30
1	A	323	ASP	CB-CG-OD2	-7.17	111.85	118.30
1	A	341	ARG	NE-CZ-NH2	6.80	123.70	120.30
1	A	319	ASP	CB-CG-OD2	-6.78	112.20	118.30
1	A	356[A]	MET	CB-CG-SD	-6.51	92.88	112.40
1	A	356[B]	MET	CB-CG-SD	-6.51	92.88	112.40
1	A	52	ASP	CB-CG-OD1	6.39	124.05	118.30
1	A	322	ASP	CB-CG-OD2	-6.23	112.69	118.30
1	A	116	MET	CG-SD-CE	-6.19	90.30	100.20
1	A	297	ASP	CB-CG-OD2	-6.18	112.74	118.30
1	A	144	TYR	CZ-CE2-CD2	-6.04	114.36	119.80
1	A	277	ARG	NE-CZ-NH2	-6.04	117.28	120.30
1	A	107	ARG	NE-CZ-NH1	5.98	123.29	120.30
1	A	233	ASP	CB-CG-OD1	-5.96	112.93	118.30
1	A	53	ASP	CB-CG-OD2	-5.94	112.95	118.30
1	A	350	ARG	NE-CZ-NH2	-5.87	117.37	120.30
1	A	339	TYR	CB-CG-CD2	-5.71	117.58	121.00
1	A	199	ARG	NE-CZ-NH1	-5.63	117.48	120.30
1	A	32	LYS	CD-CE-NZ	-5.54	98.96	111.70
1	A	295	ARG	NE-CZ-NH2	-5.27	117.67	120.30
1	A	145	LYS	CD-CE-NZ	-5.27	99.58	111.70
1	A	208[A]	ARG	NE-CZ-NH1	-5.26	117.67	120.30
1	A	208[B]	ARG	NE-CZ-NH1	-5.26	117.67	120.30

There are no chirality outliers.

There are no planarity outliers.

## 5.2 Too-close contacts ⓘ

In the following table, the Non-H and H(model) columns list the number of non-hydrogen atoms and hydrogen atoms in the chain respectively. The H(added) column lists the number of hydrogen atoms added and optimized by MolProbity. The Clashes column lists the number of clashes within the asymmetric unit, whereas Symm-Clashes lists symmetry related clashes.

Mol	Chain	Non-H	H(model)	H(added)	Clashes	Symm-Clashes
1	A	3057	0	3075	33	0
2	A	2	0	0	0	0
3	A	16	0	11	0	0
4	A	276	0	0	14	2
All	All	3351	0	3086	33	2

The all-atom clashscore is defined as the number of clashes found per 1000 atoms (including hydrogen atoms). The all-atom clashscore for this structure is 5.

All (33) close contacts within the same asymmetric unit are listed below, sorted by their clash magnitude.

Atom-1	Atom-2	Interatomic distance (Å)	Clash overlap (Å)
1:A:381:LYS:HG3	4:A:626:HOH:O	1.15	1.28
1:A:310:HIS:HD2	4:A:643:HOH:O	1.44	0.99
1:A:284:GLU:HG2	4:A:625:HOH:O	1.87	0.75
1:A:354:GLU:OE1	4:A:601:HOH:O	2.05	0.74
1:A:341:ARG:HE	1:A:349:HIS:HE1	1.37	0.71
1:A:310:HIS:CD2	4:A:643:HOH:O	2.28	0.71
1:A:20:HIS:HD2	4:A:591:HOH:O	1.74	0.70
1:A:341:ARG:HE	1:A:349:HIS:CE1	2.13	0.67
1:A:68:ASP:OD2	4:A:542:HOH:O	2.12	0.66
1:A:351:LEU:HB2	1:A:356[A]:MET:HG2	1.80	0.64
1:A:163:HIS:CD2	4:A:564:HOH:O	2.51	0.64
1:A:354:GLU:CD	1:A:354:GLU:H	2.02	0.63
1:A:66:ASN:HD22	1:A:69:ILE:H	1.47	0.63
1:A:20:HIS:HE1	1:A:290:GLY:O	1.84	0.60
1:A:163:HIS:HD2	4:A:564:HOH:O	1.85	0.59
1:A:242:GLN:NE2	1:A:248:VAL:H	2.02	0.58
1:A:381:LYS:CG	4:A:626:HOH:O	1.99	0.56
1:A:66:ASN:HD21	1:A:68:ASP:HB2	1.71	0.56
1:A:224:LEU:HA	1:A:229:TYR:HB2	1.88	0.55
1:A:381:LYS:HE2	4:A:626:HOH:O	2.07	0.55
1:A:379:ASP:HB2	1:A:383:TYR:CE2	2.43	0.53
1:A:27:GLU:HG2	1:A:285:ARG:HH22	1.79	0.48
1:A:345:PRO:HB2	4:A:617:HOH:O	2.14	0.46
1:A:361:LEU:N	1:A:362:PRO:CD	2.81	0.44
1:A:51:GLY:HA3	1:A:132:ASP:OD2	2.18	0.43
1:A:64:GLU:OE1	4:A:525:HOH:O	2.22	0.42
1:A:92:GLY:O	1:A:95:GLN:HB2	2.20	0.42
1:A:164:GLU:O	1:A:208[A]:ARG:HD3	2.21	0.41
1:A:223:SER:HB2	1:A:230:VAL:HB	2.01	0.41
1:A:315:GLU:HB2	4:A:643:HOH:O	2.20	0.41
1:A:242:GLN:HE21	1:A:248:VAL:HG23	1.86	0.41
1:A:283:PRO:O	1:A:286:ARG:HD2	2.20	0.40

All (2) symmetry-related close contacts are listed below. The label for Atom-2 includes the symmetry operator and encoded unit-cell translations to be applied.

Atom-1	Atom-2	Interatomic distance (Å)	Clash overlap (Å)
4:A:623:HOH:O	4:A:650:HOH:O[8_555]	2.09	0.11
4:A:579:HOH:O	4:A:673:HOH:O[4_455]	2.13	0.07

## 5.3 Torsion angles [i](#)

### 5.3.1 Protein backbone [i](#)

In the following table, the Percentiles column shows the percent Ramachandran outliers of the chain as a percentile score with respect to all X-ray entries followed by that with respect to entries of similar resolution.

The Analysed column shows the number of residues for which the backbone conformation was analysed, and the total number of residues.

Mol	Chain	Analysed	Favoured	Allowed	Outliers	Percentiles	
1	A	386/407 (95%)	375 (97%)	11 (3%)	0	100	100

There are no Ramachandran outliers to report.

### 5.3.2 Protein sidechains [i](#)

In the following table, the Percentiles column shows the percent sidechain outliers of the chain as a percentile score with respect to all X-ray entries followed by that with respect to entries of similar resolution.

The Analysed column shows the number of residues for which the sidechain conformation was analysed, and the total number of residues.

Mol	Chain	Analysed	Rotameric	Outliers	Percentiles	
1	A	318/331 (96%)	311 (98%)	7 (2%)	60	32

All (7) residues with a non-rotameric sidechain are listed below:

Mol	Chain	Res	Type
1	A	9	LYS
1	A	39	ARG
1	A	99	LYS
1	A	354	GLU
1	A	367	LYS
1	A	381	LYS
1	A	389	LYS

Some sidechains can be flipped to improve hydrogen bonding and reduce clashes. All (7) such sidechains are listed below:

Mol	Chain	Res	Type
1	A	20	HIS
1	A	66	ASN
1	A	163	HIS
1	A	242	GLN
1	A	257	HIS
1	A	310	HIS
1	A	349	HIS

### 5.3.3 RNA ⓘ

There are no RNA molecules in this entry.

## 5.4 Non-standard residues in protein, DNA, RNA chains ⓘ

There are no non-standard protein/DNA/RNA residues in this entry.

## 5.5 Carbohydrates ⓘ

There are no carbohydrates in this entry.

## 5.6 Ligand geometry ⓘ

Of 3 ligands modelled in this entry, 2 are monoatomic - leaving 1 for Mogul analysis.

In the following table, the Counts columns list the number of bonds (or angles) for which Mogul statistics could be retrieved, the number of bonds (or angles) that are observed in the model and the number of bonds (or angles) that are defined in the chemical component dictionary. The Link column lists molecule types, if any, to which the group is linked. The Z score for a bond length (or angle) is the number of standard deviations the observed value is removed from the expected value. A bond length (or angle) with  $|Z| > 2$  is considered an outlier worth inspection. RMSZ is the root-mean-square of all Z scores of the bond lengths (or angles).

Mol	Type	Chain	Res	Link	Bond lengths			Bond angles		
					Counts	RMSZ	$\# Z  > 2$	Counts	RMSZ	$\# Z  > 2$
3	F6R	A	3469	-	15,15,15	2.30	4 (26%)	14,21,21	1.05	0

In the following table, the Chirals column lists the number of chiral outliers, the number of chiral centers analysed, the number of these observed in the model and the number defined in the chemical component dictionary. Similar counts are reported in the Torsion and Rings columns. '-' means

no outliers of that kind were identified.

Mol	Type	Chain	Res	Link	Chirals	Torsions	Rings
3	F6R	A	3469	-	-	0/20/20/20	0/0/0/0

All (4) bond length outliers are listed below:

Mol	Chain	Res	Type	Atoms	Z	Observed(Å)	Ideal(Å)
3	A	3469	F6R	C1-C2	-6.64	1.33	1.50
3	A	3469	F6R	O3-C3	2.56	1.47	1.42
3	A	3469	F6R	C6-C5	2.95	1.56	1.51
3	A	3469	F6R	O2-C2	3.81	1.28	1.21

There are no bond angle outliers.

There are no chirality outliers.

There are no torsion outliers.

There are no ring outliers.

No monomer is involved in short contacts.

## 5.7 Other polymers [i](#)

There are no such residues in this entry.

## 5.8 Polymer linkage issues [i](#)

There are no chain breaks in this entry.

## 6 Fit of model and data

### 6.1 Protein, DNA and RNA chains

In the following table, the column labelled ‘#RSRZ> 2’ contains the number (and percentage) of RSRZ outliers, followed by percent RSRZ outliers for the chain as percentile scores relative to all X-ray entries and entries of similar resolution. The OWAB column contains the minimum, median, 95<sup>th</sup> percentile and maximum values of the occupancy-weighted average B-factor per residue. The column labelled ‘Q< 0.9’ lists the number of (and percentage) of residues with an average occupancy less than 0.9.

Mol	Chain	Analysed	<RSRZ>	#RSRZ>2		OWAB(Å <sup>2</sup> )	Q<0.9
1	A	385/407 (94%)	-0.01	25 (6%)	22 20	4, 11, 37, 69	0

All (25) RSRZ outliers are listed below:

Mol	Chain	Res	Type	RSRZ
1	A	101	ALA	9.6
1	A	229	TYR	8.0
1	A	100	ASP	8.0
1	A	224	LEU	6.7
1	A	99	LYS	6.2
1	A	98	LEU	5.7
1	A	366	ALA	4.7
1	A	375	GLN	3.6
1	A	104	GLY	3.2
1	A	103	SER	3.1
1	A	109	MET	3.0
1	A	102	PHE	3.0
1	A	230	VAL	2.9
1	A	389	LYS	2.9
1	A	378	LYS	2.8
1	A	365	LEU	2.8
1	A	381	LYS	2.8
1	A	368	VAL	2.8
1	A	223	SER	2.7
1	A	360	ALA	2.4
1	A	364	ILE	2.3
1	A	367	LYS	2.2
1	A	160	PRO	2.1
1	A	371	TYR	2.0
1	A	361	LEU	2.0

## 6.2 Non-standard residues in protein, DNA, RNA chains [i](#)

There are no non-standard protein/DNA/RNA residues in this entry.

## 6.3 Carbohydrates [i](#)

There are no carbohydrates in this entry.

## 6.4 Ligands [i](#)

In the following table, the Atoms column lists the number of modelled atoms in the group and the number defined in the chemical component dictionary. LLDF column lists the quality of electron density of the group with respect to its neighbouring residues in protein, DNA or RNA chains. The B-factors column lists the minimum, median, 95<sup>th</sup> percentile and maximum values of B factors of atoms in the group. The column labelled 'Q< 0.9' lists the number of atoms with occupancy less than 0.9.

Mol	Type	Chain	Res	Atoms	RSCC	RSR	LLDF	B-factors( $\text{\AA}^2$ )	Q<0.9
2	MG	A	408	1/1	0.99	0.14	5.08	2,2,2,2	0
2	MG	A	409	1/1	1.00	0.19	3.12	2,2,2,2	0
3	F6R	A	3469	16/16	0.98	0.07	-0.54	5,10,19,29	0

## 6.5 Other polymers [i](#)

There are no such residues in this entry.